

House District(s) 13

Senate District(s) 6

THE TWENTY-NINTH LEGISLATURE
APPLICATION FOR GRANTS
CHAPTER 42F, HAWAII REVISED STATUTES

Log No:

For Legislature's Use Only

Type of Grant Request:

GRANT REQUEST – OPERATING

GRANT REQUEST – CAPITAL

"Grant" means an award of state funds by the legislature, by an appropriation to a specified recipient, to support the activities of the recipient and permit the community to benefit from those activities.

"Recipient" means any organization or person receiving a grant.

STATE DEPARTMENT OR AGENCY RELATED TO THIS REQUEST (LEAVE BLANK IF UNKNOWN): _____

STATE PROGRAM I.D. NO. (LEAVE BLANK IF UNKNOWN): _____

1. APPLICANT INFORMATION:

Legal Name of Requesting Organization or Individual:
HANA HEALTH

Db/a:

Street Address: 4590 HANA HIGHWAY
HANA, HAWAII 96713

Mailing Address: P.O. BOX 807
HANA, HAWAII 96713

2. CONTACT PERSON FOR MATTERS INVOLVING THIS APPLICATION:

NAME CHERYL VASCONCELLOS

Title EXECUTIVE DIRECTOR

Phone # 808-248-7515, EXT. 26

Fax # 808-248-7225

E-mail cvasconcellos@hanahealth.org

3. TYPE OF BUSINESS ENTITY:

- NON PROFIT CORPORATION INCORPORATED IN HAWAII
- FOR PROFIT CORPORATION INCORPORATED IN HAWAII
- LIMITED LIABILITY COMPANY
- SOLE PROPRIETORSHIP/INDIVIDUAL
- OTHER

6. DESCRIPTIVE TITLE OF APPLICANT'S REQUEST:

HANA HEALTH FACILITIES DESIGN AND
CONSTRUCTION

4. FEDERAL TAX ID #: _____

5. STATE TAX ID #: _____

7. AMOUNT OF STATE FUNDS REQUESTED:

FISCAL YEAR 2019: \$ 1,500,000

8. STATUS OF SERVICE DESCRIBED IN THIS REQUEST:

- NEW SERVICE (PRESENTLY DOES NOT EXIST)
- EXISTING SERVICE (PRESENTLY IN OPERATION)

SPECIFY THE AMOUNT BY SOURCES OF FUNDS AVAILABLE
AT THE TIME OF THIS REQUEST:

STATE \$ 500,000

FEDERAL \$ 1,000,000

COUNTY \$ _____

PRIVATE/OTHER \$ _____

TYPE NAME & TITLE OF AUTHORIZED REPRESENTATIVE

CHERYL VASCONCELLOS, EXECUTIVE DIRECTOR
NAME & TITLE

JANUARY 10, 2018
DATE SIGNED

JAN 16 2018 *NO*
3:00pm

Application for Grants

Please check the box when item/section has been completed. If any item is not applicable to the request, the applicant should enter "not applicable".

I. Background and Summary

This section shall clearly and concisely summarize and highlight the contents of the request in such a way as to provide the State Legislature with a broad understanding of the request. Please include the following:

1. A brief description of the applicant's background;

Hana Health is a 501(c)(3) non-profit organization. The purpose of Hana Health is to improve the general health and well-being of the Hana community through the provision of medical care and other social, economic and health related programs. Hana Health is the only health care provider in the Hana district, serving the primary health care and emergent medical needs of residents and visitors alike. Hana has been designated by the federal government as a Medically Under-Served Population, a Primary Care Health Professional Shortage Area, a Dental Health Professional Shortage Area and a Mental Health Professional Shortage Area.

Hana Health currently provides primary medical care, dental health services and behavioral health care to the people of Hana. Unlike most primary care clinics in the State, Hana Health coordinates activities with American Medical Response and Maui Memorial Medical Center in the provision of urgent/emergency medical services. Hana Health provides assistance in stabilizing patients with life threatening illness or traumatic injury prior to transport to the hospital on the other side of the island. This takes place seven days a week, 24 hours a day as **Hana Health is the only health care provider in the district.** In addition, Hana Health operates the Hana Fresh farm, farm stand and nutrition center, the cornerstone of our healthy lifestyle and disease prevention programs.

In fiscal year 2016-2017, Hana Health provided medical care to 1,890 individual patients who made 5,937 visits to the Health Center of which 200 were for behavioral health services, 162 were for vision services, 232 were for after hours urgent care visits and 92 were emergency visits (stabilized and transported to tertiary care: 75 by ground ambulance, 18 by fixed wing or helicopter). Dental care was provided to an additional 667 patients who made 1,197 visits to the health center. Fifty one percent (51%) of the patients served were insured through Medicaid, Medicare, or were uninsured and provided with subsidized care. Forty five percent (45%) of patients served were Native Hawaiian.

2. The goals and objectives related to the request;

Goal I. It is the goal of Hana Health to strengthen the Moku (District) of Hana through the construction of the Rehabilitation and Support Center. This new facility will allow for the expansion and initiation of new health and rehabilitation services for the people of Hana, particularly those who are underserved due to social, economic, cultural and geographic barriers.

Objective A. Complete the site plan, design work and construction documents to include the preparation of detailed working drawings and specifications for health center development. Specifically;

- The Hana Health Rehabilitation and Support Center is new construction located on the same site as the medical center. The 6,300 square foot facility will be designed and constructed to accommodate a multitude of services to meet the community's need for behavioral and mental health services, physical therapy and cardiac rehabilitation, tele-medicine, outreach and enabling services, complimentary medicine, and short term, overnight medical respite for patients transitioning from the hospital back to their homes in Hana (recuperative care). The facility will also include administrative offices which have been housed in trailers for almost twenty years. The Rehabilitation and Support Center is a mixed-use facility which maximizes the productivity of the building site and improves opportunities for service integration and efficiencies.

Objective B. Secure a building permit and construct the facility.

3. The public purpose and need to be served;

Construction of modern health care and support service facilities in the Hana District will improve the health, wellness and safety of the resident population, as well as visitors to the area. Without Hana Health, the only medical center in the District of Hana, the entire resident population of the District, as well as the approximately 600,000 visitors per year would be at greatly increased risk for serious, often fatal medical problems and injury resulting in death.

Geographic Need Indicators: The rural district of Hana (Census Tract 301) is one of the most isolated areas in the state of Hawaii. It is made up of small, isolated settlements scattered over 233 square miles. Many of the villages are located a minimum of 45 minutes from the main town of Hana and more than two hours from the County Seat of Wailuku (along a single lane road with 632 turns and 59 bridges). The majority of Hana residents, 1,020, or 52% are Native Hawaiian/Part Hawaiian (2010 U.S. Census). Both the geographic isolation and the special health care needs of the Native Hawaiian population are factors which impact access to and delivery of health care services in the Hana District.

Hana is federally designated as a Medically Under-Served Population, a Primary Care Health Professional Shortage Area, a Dental Health Professional Shortage Area and a Mental Health Professional Shortage Area.

Income and Poverty Level: According to 2011-2015 U.S. Census information the population of the district is approximately 1,841. According to the Maui County Data Book for 2016 which is based on U.S. Census Bureau, 2010 Census Redistricting Data Summary the population is 2,291. However, given the number of hidden residents, estimates of true population are closer to 2,500.

HUD Income Levels for the Hana District are as follows (Hawaii Housing Planning Study, 2016):

Less than 30% - 54% of households/542 Households x 54% = 293 Households
30-50% - 14.5% of households/542 Households x 14.5% = 79 Households
50-80% - 11.2% of households/542 Households x 11.2% = 61 Households
More than 80% of Median Income – 20.2% of households/542 Households x 20.2% = 109 Households

The economics of the Hana District force many families to live in multigenerational households, 70% among Native Hawaiian Hana residents, compared to 47% of all Hana residents. The mean household size among Native Hawaiians living in Hana, was 4.35 compared to 3.29 for all Hana residents and compared to 3.01 statewide. (Hana Health Needs Assessment 2016)

In 2015, the median household income in the State of Hawaii was \$73,486, \$66,476 in Maui County, and \$42,364 in the Hana District. Hana's median household income is 73% below the State of Hawaii, and 56% below Maui County (U.S. Census 2011-2015 American Community Survey 5-Year Estimates).

Per capita income in the State of Hawaii is \$29,882 and \$29,664 in Maui County. Per capita income in Hana is \$20,039, 49% lower than the state, and 48% lower than the rest of Maui County. (U.S. Census 2011-2015 American Community Survey 5-Year Estimates). This is the third lowest of all communities in the State (State Primary Care Needs Assessment Data Book, 2016).

More than 14.3% of Hana families live below the poverty level, compared to 11% in Maui County and 11.2% statewide (U.S. Census 2011-2015 American Community Survey 5-Year Estimates). According to the State Primary Care Needs Assessment, 16.2% of Hana's population is living at or below poverty, and children live in 21.4% of the households receiving public assistance. Seventy-nine percent (79%) of Hana High and Elementary School students participate in the Free and Reduced Cost Lunch Program based on family size and income (Maui County Data Book 2016, U.S. Census 2011-2015).

The District of Hana is one of the poorest communities in the State, with a cost of living that is higher than the State average. Overall, the standard of living in Hana is far below most other areas in Hawaii. The socioeconomic status of the district is presumed to have a negative impact on the populations health status based on numerous studies in the field. Additionally, the economy of the district has a significant impact on the availability and accessibility of needed services and is a barrier to assuring a seamless system of health care.

Need for the Rehabilitation and Support Center: Hana Health expects to serve approximately 1,021 patients annually through the Rehabilitation and Support Center.

- Physical Therapy and/or Chiropractic Care – 423
- Cardiac Habilitation/Rehabilitation - 80 individuals
- Mental/Behavioral Health services - 478 individuals.
- Medical Respite – 40

Estimates are based on QMark Research conducted for Hana Health in 2016, a review of 2011-2015 U.S. Census data and Hana Health patient data, as well as anecdotal information provided by Hana Health providers.

10% of Hana residents are in need of Physical Therapy Services, or 184 individuals.

(1,841 district population x 10%)

(Data Source: QMark 2016 Study, U.S. Census 2011-2015)

According to Hana Health physicians, approximately 15 referrals are made each month for physical therapy (180).

13% of Hana residents are in need of Chiropractic Care, or 239 individuals.

(1,841 district population x 13%)

(Data Source: QMark 2016 Study, U.S. Census 2011-2015)

Approximately 10.9% (201) of the Hana District population has a physical disability. It is estimated that 112 individuals have an ambulatory difficulty.

(1,841 district population x 10.9%)

(Data Source: U.S. Census 2011-2015)

There are approximately 247 individuals 65 years of age and older living in the Hana district. It is estimated that 16.2%, or 40 of these individuals have an ambulatory difficulty.

247 Residents 65 years of age or older x 16.2% with an ambulatory difficulty = 40.

(Data Source: U.S. Census 2011-2015)

10% of Hana district households have at least one person living with a heart condition, or 54 individuals. Additionally, 35% (189) of households reported at

least one household member having high blood pressure, and 25% (135) reported having high cholesterol.
(542 households x 70% = 379 households – however this is likely a duplicative count as individuals often have more than one condition)
(Data Source: QMark 2016 Study, U.S. Census 2011-2015)
According to Hana Health physicians approximately 50 patients have severe heart conditions and another 30+ have more moderate heart problems. All would benefit from cardiac rehabilitation.

13% of Hana residents are suffering from Depression, or 239 individuals.
(1,841 district population x 13%)
(Data Source: QMark 2016 Study, U.S. Census 2011-2015)

8% of Hana residents are in need of Counseling Services, or 147 individuals.
(1,841 district population x 8%)
(Data Source: QMark 2016 Study, U.S. Census 2011-2015)

5% of Hana residents have substance abuse problems, or 92 individuals.
(1,841 district population x 5%)
(Data Source: QMark 2016 Study, U.S. Census 2011-2015)

Hana Health provided medically focused mental health and substance abuse care to 251 patients in 2016. This may be a duplicative count, as patients often have more than one mental health/substance abuse condition. All of these individuals would benefit from additional services provided by mental health practitioners.
(Data Source: AthenaNet electronic health record/UDS Report)
According to Hana Health physicians, between 50 and 100 patients need help for chronic depression, anxiety and obsessive compulsive disorder.
Approximately 30 patients have schizophrenia, bi-polar or severe depression. All would benefit from mental health therapy.)

Approximately 10 patients a month (120 a year) require hospital care of which half, or five a month would benefit from medical respite care before returning to their homes.

4. Describe the target population to be served; and

The entire District of Hana will benefit from this project. Native Hawaiians, children, the elderly, those with or at risk of chronic health conditions, those with specific medical conditions, and those with behavioral or mental health conditions are primary targets of the programs to be provided through the Rehabilitation and Support Center. In addition, patients transitioning from tertiary care (hospitalization) back home to Hana, will benefit from a medical respite program (“recuperative care”) whereby they are able to be medically supervised by Hana Health providers on a 24-hour basis until they are able to return home.

5. Describe the geographic coverage.

The District of Hana – Census Tract 301

II. Service Summary and Outcomes

The Service Summary shall include a detailed discussion of the applicant's approach to the request. The applicant shall clearly and concisely specify the results, outcomes, and measures of effectiveness from this request. The applicant shall:

1. Describe the scope of work, tasks and responsibilities;

Prepare a site plan, schematic designs and construction documents to include the preparation of detailed working drawings and specifications for health center development. Secure all permits necessary to initiate construction. Initiate and complete construction work.

Tasks and Responsibilities:

- A. Prepare/Publish RFP and select architect - Board of Directors and Executive Director.
- B. Prepare and sign contract – Architect, Executive Director
- C. Revise and update existing site plan to reflect current and future operations and space requirements – Architect, Board of Directors, Executive Director.
- D. Prepare schematic designs and preliminary cost estimates - Architect.
- E. Modify schematic designs as necessary and prepare construction documents – Architect, Board of Directors, Executive Director.
- F. Prepare cost estimate and “value engineer” project as necessary – Architect.
- G. Prepare Final Cost Estimates – Architect
- H. Prepare and submit building permit application to County of Maui – Architect
- I. Modify plans as necessary to secure building permit – Architect
- J. Prepare/Publish RFP and select contractor – Board of Directors and Executive Director.

- K. Prepare and sign contract – Contractor, Executive Director
- L. Initiate and complete construction - Contractor

2. Provide a projected annual timeline for accomplishing the results or outcomes of the service;

See Attached.

3. Describe its quality assurance and evaluation plans for the request. Specify how the applicant plans to monitor, evaluate, and improve their results; and

Hana Health is committed to providing quality services to all beneficiaries in an organization - wide effort to continuously improve our processes and the delivery of care to the community we serve. Hana Health maintains a Quality Assurance/Performance Improvement System to assure excellence in the quality of care provided. The system is designed to increase accountability, support quality improvement, facilitate and support program decisions, monitor the population's health status, empower patients and families to make informed health care decisions and provide evidence to eliminate wasteful practices. Hana Health's quality assurance program measures, monitors, tracks and improves performance in key aspects of all operations.

The Board of Directors maintains oversight for the Quality Assurance/Performance Improvement Program and will be monitoring progress on this project as well.

Architect services will include the management of the construction project. The continuing involvement of the architect during the construction phase will help ensure that the completed buildings support the design intent, conforms to the construction documents and ensures the quality of materials and workmanship. The architect will be available for advice and consultation with the Executive Director and the Board of Directors throughout the construction phase. Additionally, the project will be monitored against both time and cost objectives.

4. List the measure(s) of effectiveness that will be reported to the State agency through which grant funds are appropriated (the expending agency). The measure(s) will provide a standard and objective way for the State to assess the program's achievement or accomplishment. Please note that if the level of appropriation differs from the amount included in this application that the measure(s) of effectiveness will need to be updated and transmitted to the expending agency.

A. Completion of Construction Documents

- B. Obtain Building Permit
- C. Site Preparation
- D. Completion of Construction
- E. Certificate of Occupancy

III. Financial

Budget

1. The applicant shall submit a budget utilizing the enclosed budget forms as applicable, to detail the cost of the request.
 - a. Budget request by source of funds ([Link](#))
 - b. Personnel salaries and wages ([Link](#))
 - c. Equipment and motor vehicles ([Link](#))
 - d. Capital project details ([Link](#))
 - e. Government contracts, grants, and grants in aid ([Link](#))

2. The applicant shall provide its anticipated quarterly funding requests for the fiscal year 2019.

| Quarter 1 | Quarter 2 | Quarter 3 | Quarter 4 | Total Grant |
|-----------|-----------|-----------|-----------|-------------|
| 200,000 | 500,000 | 500,000 | 300,000 | 1,500,000 |

3. The applicant shall provide a listing of all other sources of funding that they are seeking for fiscal year 2019.

| | | |
|------------------------------|-------------|---------------------------------|
| Maui County CDBG | \$ 800,000 | Application Submitted |
| Weinberg Foundation | \$1,800,000 | Final Third of Financing |
| Hana District Private Donors | \$ 25,000 | Fundraising Campaign in Process |
| Corporate/Foundations | \$ 675,000 | Capital Campaign in Process |

4. The applicant shall provide a listing of all state and federal tax credits it has been granted within the prior three years. Additionally, the applicant shall provide a listing of all state and federal tax credits they have applied for or anticipate applying for pertaining to any capital project, if applicable.

NA

5. The applicant shall provide a listing of all federal, state, and county government contracts, grants, and grants in aid it has been granted within the prior three years and will be receiving for fiscal year 2019 for program funding.

| | | | |
|-----------|---------------------------------|-------------|-----------|
| HRSA | Health Center Operations | \$1,325,395 | 2018-2019 |
| HRSA | Health Center Operations | \$1,308,468 | 2017-2018 |
| HRSA | Mental Health Service Expansion | \$ 175,000 | 2017-2018 |
| HRSA | Health Center Operations | \$1,264,750 | 2016-2017 |
| HRSA | Rehab Center Construction | \$1,000,000 | 2016-2017 |
| HRSA | Health Center Operations | \$994,714 | 2015-2016 |
| State POS | Health Center Operations | \$1,130,000 | 2018-2019 |
| State POS | Health Center Operations | \$1,130,000 | 2017-2018 |
| State POS | Health Center Operations | \$1,130,000 | 2016-2017 |
| State POS | Health Center Operations | \$1,130,000 | 2015-2016 |

6. The applicant shall provide the balance of its unrestricted current assets as of December 31, 2017.

There are no unrestricted current assets as of December 31, 2017.

IV. Experience and Capability

1. **Necessary Skills and Experience**

The applicant shall demonstrate that it has the necessary skills, abilities, knowledge of, and experience relating to the request. State your experience and appropriateness for providing the service proposed in this application. The applicant shall also provide a listing of verifiable experience of related projects or contracts for the most recent three years that are pertinent to the request.

Hana Health has been providing medical care to the district of Hana since July 1997 and State POS agreements have been awarded to Hana Health for the same period. Hana Health was granted Federally Qualified Health Center status in 2000 after meeting numerous requirements and has received federal operating support from the Bureau of Primary Health Care since that time.

Hana Health's Executive Director and Board of Directors has a demonstrated track record in securing and managing public and private funds for both operations and capital improvement. In addition, Hana Health manages a twelve-acre project site which currently includes the medical center, an employee residence, administrative offices, Hana Fresh Nutrition Center built in 2012 (a \$2.3 million project), the Hana Fresh organic farm and farm stand. The Executive Director has managed three Environmental Assessments, construction of the \$2.3 million nutrition center, a \$900,000 medical center renovation project, and an \$80,000 employee residence renovation project.

In the past three years, Hana Health has received funds for and managed the closure of four Large Capacity Cesspools and the installation of three septic systems financed with a Bank of Hawaii loan and subsequently a \$200,000 State Legislative appropriation.

2. **Facilities**

The applicant shall provide a description of its facilities and demonstrate its adequacy in relation to the request. If facilities are not presently available, describe plans to secure facilities.

Hana Health operates on a 2.035 acre parcel of property where the current medical center is located, and on an adjoining ten acre parcel where the Hana Fresh farm is located. Both parcels are owned by the State of Hawaii and have been leased to Hana Health for 55 years, at \$1 per year. With the exception of the Hana Fresh Nutrition Center which was completed in May 2012, Hana Health facilities range from more than 50 years old to more than 90 years old and are in need of continual repair and maintenance. Built in 1965, the current 4,000 square foot medical center underwent a major renovation two years ago including the installation of new windows, floors, central air conditioning and a new roof. However, the space is inadequate to meet program and administrative needs. Three modular units have been placed on the property to support operations, with a fourth to be installed in the next two months.

V. Personnel: Project Organization and Staffing

1. **Proposed Staffing, Staff Qualifications, Supervision and Training**

The applicant shall describe the proposed staffing pattern and proposed service capacity appropriate for the viability of the request. The applicant shall provide the qualifications and experience of personnel for the request and shall describe its ability to supervise, train and provide administrative direction relative to the request.

Staffing

Position Requirements

Executive Director

A minimum of 10 years experience in similar capacity.

The Executive Director is responsible for project implementation and oversight. She has worked with several architectural and planning firms to address the completion of state and federal environmental assessments, zoning issues, conceptual designs for the health center campus, schematic designs and construction documents for the Hana Health Nutrition Center and the Maui County building permit process. She managed construction of the recently completed Nutrition Center, as well as the permit process for the Telemedicine,

Business and Training Center. DLNR would not provide approval for this project, so it had to be tabled, resulting in the termination of a \$500,000 EDA grant. Ms. Vasconcellos managed a \$900,000 state CIP grant for the renovation of the medical center which was completed almost three years ago. She also managed the installation of three new septic systems to replace the existing Large Capacity Cesspools located on the property as required by EPA. This \$260,000 project was completed almost three years ago, as well. Ms. Vasconcellos managed a \$350,000 health center renovation project in 1997, and in her prior position as the Executive Director of Planned Parenthood of Hawaii, she managed ten clinic renovation/construction projects.

2. **Organization Chart**

The applicant shall illustrate the position of each staff and line of responsibility/supervision. If the request is part of a large, multi-purpose organization, include an organization chart that illustrates the placement of this request.

See Attached.

3. **Compensation**

The applicant shall provide the annual salaries paid by the applicant to the three highest paid officers, directors, or employees of the organization by position.

| | |
|-----------|-----------|
| Physician | \$185,000 |
| Physician | \$185,000 |
| PA | \$161,000 |

VI. Other

1. **Litigation**

The applicant shall disclose any pending litigation to which they are a party, including the disclosure of any outstanding judgement. If applicable, please explain.

None.

2. **Licensure or Accreditation**

The applicant shall specify any special qualifications, including but not limited to licensure or accreditation that the applicant possesses relevant to this request.

All clinical staff are appropriately licensed and credentialed.

3. **Private Educational Institutions**

The applicant shall specify whether the grant will be used to support or benefit a sectarian or non-sectarian private educational institution. Please see [Article X, Section 1, of the State Constitution](#) for the relevance of this question.

NA

4. **Future Sustainability Plan**

The applicant shall provide a plan for sustaining after fiscal year 2018-19 the activity funded by the grant if the grant of this application is:

- (a) Received by the applicant for fiscal year 2018-19, but
- (b) Not received by the applicant thereafter.

This is a CIP request which will not require on-going funding.

5. **Certificate of Good Standing (If the Applicant is an Organization)**

If the applicant is an organization, the applicant shall submit one (1) copy of a certificate of good standing from the Director of Commerce and Consumer Affairs that is dated no earlier than December 1, 2017.

See Attached.

6. **Declaration Statement**

The applicant shall submit a declaration statement affirming its compliance with Section 42F-103, Hawaii Revised Statutes. ([Link](#))

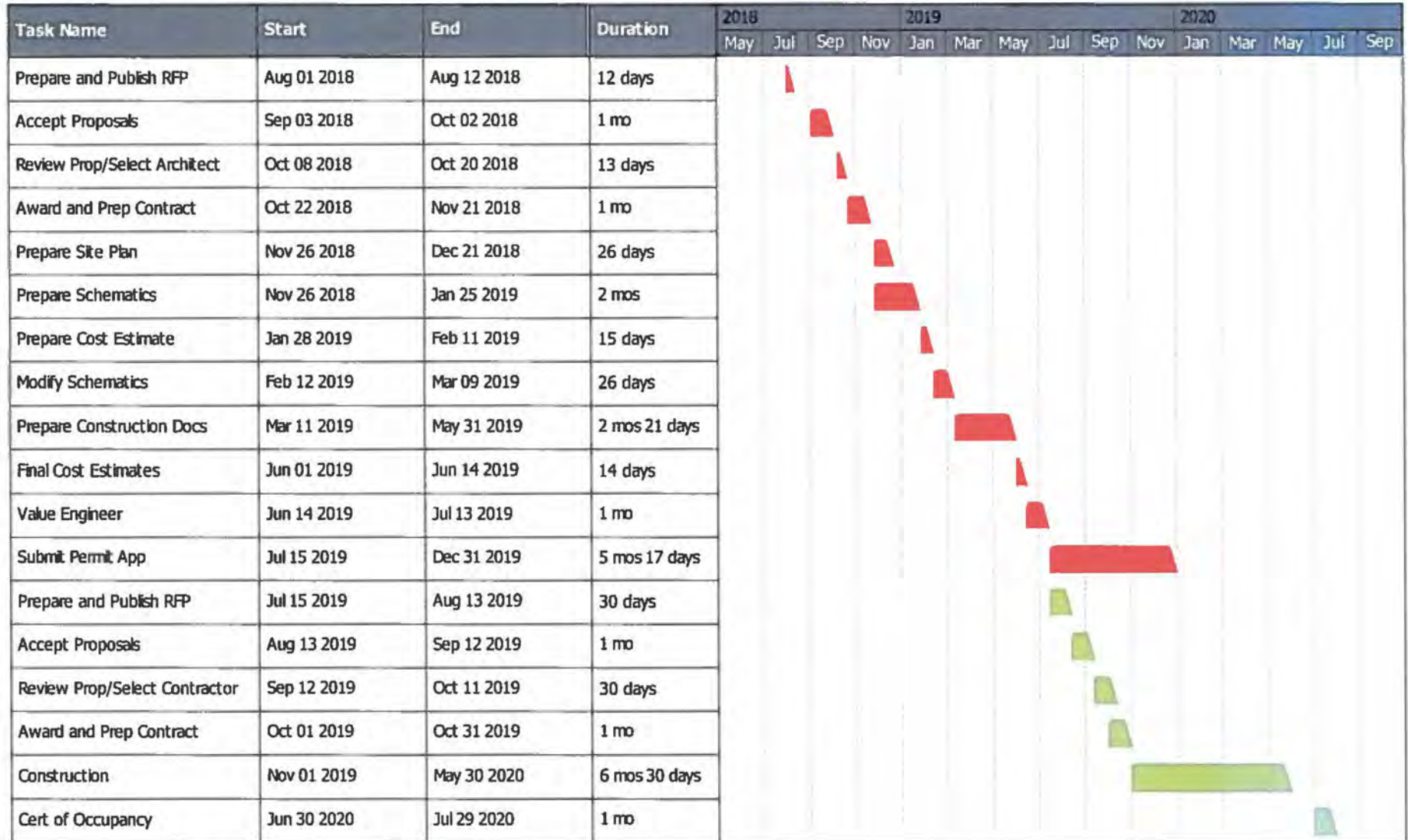
See Attached.

7. **Public Purpose**

The applicant shall specify whether the grant will be used for a public purpose pursuant to Section 42F-102, Hawaii Revised Statutes. ([Link](#))

Pursuant to Section 42F-102, Hawaii Revised Statutes, the grant for the Hana Health Rehabilitation and Support Center will serve the public purpose as stated in this application.

Hana Health Rehabilitation and Support Center



■ Planning
 ■ Construction

BUDGET REQUEST BY SOURCE OF FUNDS

Period: July 1, 2018 to June 30, 2019

Applicant: HANA HEALTH

| BUDGET CATEGORIES | Total State Funds Requested (a) | Total Federal Funds Requested (b) | Total County Funds Requested (c) | Total Private/Other Funds Requested (d) |
|---|---------------------------------------|---|--|---|
| A. PERSONNEL COST | | | | |
| 1. Salaries | | | | |
| 2. Payroll Taxes & Assessments | | | | |
| 3. Fringe Benefits | | | | |
| TOTAL PERSONNEL COST | | | | |
| B. OTHER CURRENT EXPENSES | | | | |
| 1. Airfare, Inter-Island | | | | |
| 2. Insurance | | | | |
| 3. Lease/Rental of Equipment | | | | |
| 4. Lease/Rental of Space | | | | |
| 5. Staff Training | | | | |
| 6. Supplies | | | | |
| 7. Telecommunication | | | | |
| 8. Utilities | | | | |
| 9 | | | | |
| 10 | | | | |
| 11 | | | | |
| 12 | | | | |
| 13 | | | | |
| 14 | | | | |
| 15 | | | | |
| 16 | | | | |
| 17 | | | | |
| 18 | | | | |
| 19 | | | | |
| 20 | | | | |
| TOTAL OTHER CURRENT EXPENSES | | | | |
| C. EQUIPMENT PURCHASES | | | | |
| D. MOTOR VEHICLE PURCHASES | | | | |
| E. CAPITAL | 1,500,000 | 1,000,000 | 800,000 | 3,000,000 |
| TOTAL (A+B+C+D+E) | 1,500,000 | 1,000,000 | 800,000 | 3,000,000 |
| SOURCES OF FUNDING | | Budget Prepared By: | | |
| (a) Total State Funds Requested | 1,500,000 | CHERYL VASCONCELLOS 808-248-7515, EXT 26 | | |
| (b) Total Federal Funds Requested | 1,000,000 | Name (Please type or print) Phone | | |
| (c) Total County Funds Requested | 800,000 | 1-14-18 | | |
| (d) Total Private/Other Funds Requested | 3,000,000 | Signature of Authorized Official Date | | |
| TOTAL BUDGET | 6,300,000 | EXECUTIVE DIRECTOR | | |
| | | Name and Title (Please type or print) | | |

BUDGET JUSTIFICATION - PERSONNEL SALARIES AND WAGES

NA

Period: July 1, 2018 to June 30, 2019

Applicant: HANA HEALTH

| POSITION TITLE | FULL TIME EQUIVALENT | ANNUAL SALARY A | % OF TIME ALLOCATED TO GRANT REQUEST B | TOTAL STATE FUNDS REQUESTED (A x B) |
|--------------------------------|----------------------|--------------------|---|--|
| | | | | \$ - |
| | | | | \$ - |
| | | | | \$ - |
| | | | | \$ - |
| | | | | \$ - |
| | | | | \$ - |
| | | | | \$ - |
| | | | | \$ - |
| | | | | \$ - |
| | | | | \$ - |
| | | | | \$ - |
| | | | | \$ - |
| | | | | \$ - |
| | | | | \$ - |
| | | | | \$ - |
| | | | | \$ - |
| | | | | \$ - |
| | | | | \$ - |
| | | | | \$ - |
| TOTAL: | | | | |
| JUSTIFICATION/COMMENTS: | | | | |

BUDGET JUSTIFICATION - EQUIPMENT AND MOTOR VEHICLES

Period: July 1, 2018 to June 30, 2019

Applicant: HANA HEALTH

| DESCRIPTION EQUIPMENT | NO. OF ITEMS | COST PER ITEM | TOTAL COST | TOTAL BUDGETED |
|--------------------------|-----------------|------------------|---------------|-------------------|
| NA | | | \$ - | |
| | | | \$ - | |
| | | | \$ - | |
| | | | \$ - | |
| | | | \$ - | |
| TOTAL: | | | | |

JUSTIFICATION/COMMENTS:

| DESCRIPTION OF MOTOR VEHICLE | NO. OF VEHICLES | COST PER VEHICLE | TOTAL COST | TOTAL BUDGETED |
|---------------------------------|--------------------|---------------------|---------------|-------------------|
| NA | | | \$ - | |
| | | | \$ - | |
| | | | \$ - | |
| | | | \$ - | |
| | | | \$ - | |
| TOTAL: | | | | |

JUSTIFICATION/COMMENTS:

BUDGET JUSTIFICATION - CAPITAL PROJECT DETAILS

Period: July 1, 2018 to June 30, 2019

Applicant: HANA HEALTH

| FUNDING AMOUNT REQUESTED | | | | | | |
|--|--|---------------|-----------------------|--------------------|--------------------------------------|--------------|
| TOTAL PROJECT COST | ALL SOURCES OF FUNDS RECEIVED IN PRIOR YEARS | | STATE FUNDS REQUESTED | OF FUNDS REQUESTED | FUNDING REQUIRED IN SUCCEEDING YEARS | |
| | FY: 2016-2017 | FY: 2017-2018 | FY:2018-2019 | FY:2018-2019 | FY:2019-2020 | FY:2020-2021 |
| PLANS | | | | | | |
| LAND ACQUISITION | | | | | | |
| DESIGN | | | 500,000 | | | |
| CONSTRUCTION | 1,500,000 | | 1,000,000 | | | |
| EQUIPMENT | | | | | | |
| TOTAL: | 1,500,000 | | 1,500,000 | | | |
| JUSTIFICATION/COMMENTS: | | | | | | |
| Architect provided cost estimates based on the preliminary conceptual design for this project, as well as past experience. | | | | | | |

GOVERNMENT CONTRACTS AND / OR GRANTS

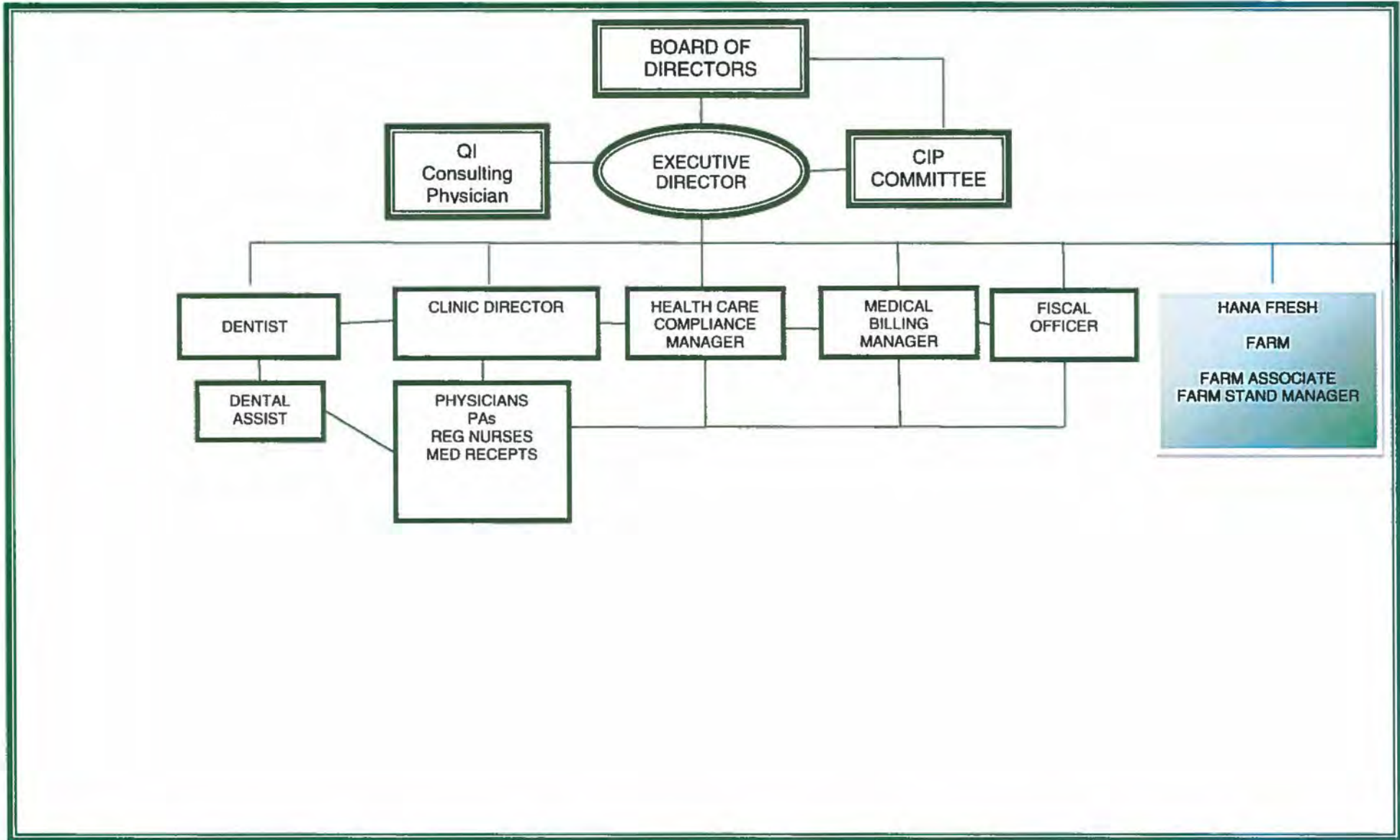
Applicant: HANA HEALTH

Contracts Total: 9,358,000

| | CONTRACT DESCRIPTION | EFFECTIVE DATES | AGENCY | GOVERNMENT ENTITY (U.S. / State / Haw / Hon / Kau / Mau) | CONTRACT VALUE |
|----|--|------------------------------|---------------|---|-----------------------|
| 1 | State Purchase of Service - Health Center Operations | July 1, 2016 - June 30, 2020 | DOH | State | 4,512,000 |
| 2 | 330 FQHC Grant - Health Center Operations | March 1, 2017 - Feb 28, 2020 | HRSA | Federal | 3,846,000 |
| 3 | 330 FQHC Grant - Construction - Rehab Center | May 1, 2016 - April 30, 2019 | HRSA | Federal | 1,000,000 |
| 4 | | | | | |
| 5 | | | | | |
| 6 | | | | | |
| 7 | | | | | |
| 8 | | | | | |
| 9 | | | | | |
| 10 | | | | | |
| 11 | | | | | |
| 12 | | | | | |
| 13 | | | | | |
| 14 | | | | | |
| 15 | | | | | |
| 16 | | | | | |
| 17 | | | | | |
| 18 | | | | | |
| 19 | | | | | |
| 20 | | | | | |
| 21 | | | | | |
| 22 | | | | | |
| 23 | | | | | |
| 24 | | | | | |
| 25 | | | | | |
| 26 | | | | | |
| 27 | | | | | |
| 28 | | | | | |
| 29 | | | | | |
| 30 | | | | | |



ORGANIZATION CHART
2018





Department of Commerce and Consumer Affairs

CERTIFICATE OF GOOD STANDING

I, the undersigned Director of Commerce and Consumer Affairs of the State of Hawaii, do hereby certify that

HANA HEALTH

was incorporated under the laws of Hawaii on 11/06/1995 ; that it is an existing nonprofit corporation; and that, as far as the records of this Department reveal, has complied with all of the provisions of the Hawaii Nonprofit Corporations Act, regulating domestic nonprofit corporations.



IN WITNESS WHEREOF, I have hereunto set my hand and affixed the seal of the Department of Commerce and Consumer Affairs, at Honolulu, Hawaii.

Dated: January 11, 2018

Director of Commerce and Consumer Affairs

**DECLARATION STATEMENT OF
APPLICANTS FOR GRANTS PURSUANT TO
CHAPTER 42F, HAWAII REVISIED STATUTES**

The undersigned authorized representative of the applicant certifies the following:

- 1) The applicant meets and will comply with all of the following standards for the award of grants pursuant to Section 42F-103, Hawaii Revised Statutes:
 - a) Is licensed or accredited, in accordance with federal, state, or county statutes, rules, or ordinances, to conduct the activities or provide the services for which a grant is awarded;
 - b) Complies with all applicable federal and state laws prohibiting discrimination against any person on the basis of race, color, national origin, religion, creed, sex, age, sexual orientation, or disability;
 - c) Agrees not to use state funds for entertainment or lobbying activities; and
 - d) Allows the state agency to which funds for the grant were appropriated for expenditure, legislative committees and their staff, and the auditor full access to their records, reports, files, and other related documents and information for purposes of monitoring, measuring the effectiveness, and ensuring the proper expenditure of the grant.
- 2) If the applicant is an organization, the applicant meets the following requirements pursuant to Section 42F-103, Hawaii Revised Statutes:
 - a) Is incorporated under the laws of the State; and
 - b) Has bylaws or policies that describe the manner in which the activities or services for which a grant is awarded shall be conducted or provided.
- 3) If the applicant is a non-profit organization, it meets the following requirements pursuant to Section 42F-103, Hawaii Revised Statutes:
 - a) Is determined and designated to be a non-profit organization by the Internal Revenue Service; and
 - b) Has a governing board whose members have no material conflict of interest and serve without compensation.

Pursuant to Section 42F-103, Hawaii Revised Statutes, for grants used for the acquisition of land, when the organization discontinues the activities or services on the land acquired for which the grant was awarded and disposes of the land in fee simple or by lease, the organization shall negotiate with the expending agency for a lump sum or installment repayment to the State of the amount of the grant used for the acquisition of the land.

Further, the undersigned authorized representative certifies that this statement is true and correct to the best of the applicant's knowledge.

HANA HEALTH
(Typed Name of Individual or Organization)

[Redacted Signature] 1-13-18
(Signature) (Date)

CHERYL VASCONCELLOS EXECUTIVE DIRECTOR
(Typed Name) (Title)