

House District(s)
14, 15, 16, 21, 22, 40, 41, 43, 44, 49, 50,
51
Senate District(s)
8, 12, 19, 20, 21, 24, 25

THE TWENTY-NINTH LEGISLATURE
APPLICATION FOR GRANTS
CHAPTER 42F, HAWAII REVISED STATUTES

Log No:

For Legislature's Use Only

Type of Grant Request:

GRANT REQUEST – OPERATING

GRANT REQUEST – CAPITAL

"Grant" means an award of state funds by the legislature, by an appropriation to a specified recipient, to support the activities of the recipient and permit the community to benefit from those activities.

"Recipient" means any organization or person receiving a grant.

STATE DEPARTMENT OR AGENCY RELATED TO THIS REQUEST (LEAVE BLANK IF UNKNOWN): _____

STATE PROGRAM I.D. NO. (LEAVE BLANK IF UNKNOWN): _____

1. APPLICANT INFORMATION:

Legal Name of Requesting Organization or Individual:
BOYS & GIRLS CLUB OF HAWAII

Db/a:

Street Address: 345 QUEEN STREET, SUITE 900,
HONOLULU

Mailing Address: 345 QUEEN STREET, SUITE 900,
HONOLULU, HI 96813

2. CONTACT PERSON FOR MATTERS INVOLVING THIS APPLICATION:

Name PADDY KAUHANE

Title EXECUTIVE VP & CFOO

Phone # (808) 949-4203

Fax # (808) 955-4496

E-mail pkauhane@bgch.com

3. TYPE OF BUSINESS ENTITY:

- NON PROFIT CORPORATION INCORPORATED IN HAWAII
 FOR PROFIT CORPORATION INCORPORATED IN HAWAII
 LIMITED LIABILITY COMPANY
 SOLE PROPRIETORSHIP/INDIVIDUAL
 OTHER

6. DESCRIPTIVE TITLE OF APPLICANT'S REQUEST:

2018 SAFETY RELATED FACILITY AND NETWORK IMPROVEMENTS

4. FEDERAL TAX ID #: [REDACTED]

5. STATE TAX ID #: [REDACTED]

7. AMOUNT OF STATE FUNDS REQUESTED:

FISCAL YEAR 2019: \$950,000

8. STATUS OF SERVICE DESCRIBED IN THIS REQUEST:

- NEW SERVICE (PRESENTLY DOES NOT EXIST)
 EXISTING SERVICE (PRESENTLY IN OPERATION)

SPECIFY THE AMOUNT BY SOURCES OF FUNDS AVAILABLE
AT THE TIME OF THIS REQUEST:

STATE \$ _____

FEDERAL \$ _____

COUNTY \$ _____

PRIVATE/OTHER \$ 320,000

AUTHORIZED REPRESENTATIVE:

TIM MOTTS, PRESIDENT & CEO
NAME & TITLE

1/19/2018
DATE SIGNED

JAN 19 2018

JM
208 PM

Application for Grants

If any item is not applicable to the request, the applicant should enter "not applicable".

I. Background and Summary

This section shall clearly and concisely summarize and highlight the contents of the request in such a way as to provide the State Legislature with a broad understanding of the request. Please include the following:

1. A brief description of the applicant's background;

The Boys & Girls Club of Hawaii (BGCH), a non-profit 501 (c) (3) youth guidance organization, opened its doors in 1976 and has evolved from a single room, after-school sports and recreational program to an inter-disciplinary community-based organization located on or near Title I schools in McCully-Moiliili, Waianae, Nanakuli, Ewa Beach and Windward areas on Oahu, and Kapaa, Lihue and Waimea on Kauai. Over the years, BGCH has increased its capacity to serve in excess of 14,000 youth between the ages of 6-18 years old, while keeping fees low; \$25 per year for elementary and middle school members and \$10 per year for high school members.

With over 40 years of experience working with Hawaii's youth, BGCH is uniquely positioned to deliver meaningful youth development services and activities. The mission of BGCH is to inspire all young people, especially those who need us most, to reach their full potential as productive, caring, responsible citizens. To accomplish this, BGCH has adopted Boys & Girls Club of America's "Formula for Impact", a research-based theory of change that describes how individual Clubs and the Movement as a whole can increase our impact – exponentially – on the young people of America.

The Formula for Impact begins with the young people, physically, in our Clubs. It calls for us to consistently provide the most powerful Club Experience possible by implementing the Five Key Elements for Positive Youth Development: (1) Safe, Positive Environment, (2) Fun, (3) Supportive Relationships, (4) Opportunities and Expectations, and (5) Recognition. These along with high-yield learning activities and targeted programs help our members to achieve priority outcomes in the areas of Academic Success, Good Character & Citizenship and Healthy Lifestyles. BGCH creates a physically, emotionally, and intellectually safe place for youth to grow, provides mentoring by supportive staff and caring volunteers who nurture character development and life-enhancing skills, and provide hope and opportunity for all youth.

2. The goals and objectives related to the request;

The number one priority of the Boys & Girls Club of Hawaii is to ensure the safety of our youth members, which is also the first key element necessary for positive youth development. It is a proven fact that Social Emotional Wellness is linked with a youth's ability to learn. Prioritizing a safe climate within our clubhouses will add to our member's feelings of safety which in turns boosts our youths' learning and coping abilities. In contrast, a community which is deemed unsafe or uncared for makes it physically and mentally more difficult for youth to learn and more likely for them to act out or drop out. When we consider the demographic of the youth BGCH serves, many coming from disadvantaged and broken homes, or who are in the foster system, the Club represents a safe haven and provides youth with stability, safety and support.

Facility improvements and repairs throughout the organization are needed which are contributing to safety issues. Roof repairs and replacements are needed to stop water damage causing mold, damage to the interior of the buildings and equipment, and damage to wiring which provides electricity to the security cameras and lighting the Clubhouses, as well as potential fire hazards. Improvements are needed for walkways and grounds to correct uneven fields, sidewalks, athletic courts and building entrances that are posing tripping and injury hazards. Gym pole covers are missing and are currently covered with a cones when not in use, thus creating a safety hazard. Chairs in gyms are cracked, often pinching the skin of the children if they put their fingers in the wrong spot, or scratch the backs of their legs when sitting. Intercom and scanning systems are needed to assist staff to effectively monitor the front desk areas without leaving the post and efficiently locate youth within the Club and as they depart. Lighting outside of our buildings need to be improved to ensure safety of members and families upon exiting in the evening. Restrooms are not well lit and need repairs to commodes, sinks and partitions. Fire safety systems needs upgrading. Windows are inoperable or sealed and are preventing proper ventilation. Rooftops and gutters need to be replaced.

Improvements to existing structures at the Lihue and Waianae sites are needed for their Teen Centers.

BGCH's request for CIP support will help us to repair some of these safety hazards in our clubhouses, creating a safer and positive environment for our members. Funding through the State GIA will allow us to direct operational revenues to build capacity in our clubhouses, to ensure we can keep our fees at \$25 and \$10 per year, even though the cost of serving one youth per year is over \$1,500, and to provide leverage in a capital fundraising campaign that will begin in 2018 to address the remaining safety related issues in our facilities.

3. The public purpose and need to be served;

Youth need guidance and supervision, especially during the hours after school between 3 PM and 6 PM when they are most likely to engage in risky behavior. Yet, a May 2016 Afterschool Alliance study shows that 1 in 5 kids are left on their own during these hours. Afterschool programs are locally driven solutions that help youth, families and employers get ahead. The programs keep kids safe, link them with mentors who discourage negative behaviors such as aggression and drug and alcohol use, inspire them to learn, and help parents keep their jobs. In fact, 8 in 10 parents say afterschool programs help them keep their jobs.

Afterschool programs, such as BGCH, create mutually caring, trustful, and respectful relationships between youth and adults which leads to positive youth development. A June 2017 Afterschool Alliance study shows that youth in afterschool programs attend school more often, do better in school, gain skills for success, and are more likely to graduate.

The Afterschool Alliance report also shows that regular participation in afterschool programs help narrow the achievement gap between high- and low-income youth. Through the partnerships BGCH has with other CBO's, DOE, private and charter schools, and local corporations, we are able to offer programming to youth who would not have access otherwise. Programming like team sports, drug and violence prevention, counseling resources, arts, music and culture, STEM activities, financial and environmental literacy, leadership training, community service, career readiness, internships and apprenticeships and college readiness.

BGCH also includes family engagement as part of our strategies. Through Ohana Nights and other family based activities, parents and guardians become an active part in their child's learning, strengthening what the schools and afterschool programs are already doing.

4. Describe the target population to be served; and

With an average cumulative daily attendance of over 1000 youth, outreach of over 14,000, and nearly 5,000 registered members between the ages of 6 – 18 years, including over 2,000 teens, BGCH is uniquely positioned to make a significant difference in communities throughout Oahu and Kauai. As one of the leading youth service organizations in the state, BGCH has been providing services to youth from disadvantaged circumstances for decades. Our Clubhouses are situated on or next to school campuses where large percentages of students are enrolled in free or reduced lunch programs.

Serving our members safely is BGCH's priority. By increasing our capacity to serve through safer and well maintained facilities, we can increase our outreach

and memberships with increased space and additional unrestricted revenues directed to operations instead of capital improvements.

According to Afterschool Alliance (afterschoolalliance.org), a study conducted by Policy Studies Associates Inc. links outcomes to high-quality afterschool programs. The study of approximately 3,000 low-income, ethnically diverse elementary and middle school students found that those who regularly attended high-quality afterschool programs for more than two years gained up to 20 percentiles in standardized math test scores compared with peers who were routinely unsupervised during after school hours. Students with lower program attendance gained 12 percentiles compared with their non-participating peers.

Afterschool Alliance also states that “for every child in an afterschool program, two are waiting to get in. And in rural communities, three children are waiting for every child enrolled”. BGCH has wait lists at nearly all of our clubhouses.

Please see attached chart showing need in the target populations of our existing clubhouse communities. BGCH’s goal is to increase our ability to serve in the communities we currently have a presence, and to branch out in other areas of O’ahu and Kaua’i with the intent of supporting the large percentage of underserved youth on these islands.

5. Describe the geographic coverage.

BGCH Clubhouses are situated on or next to school campuses on the islands of Oahu and Kauai. Our clubhouse sites are located in the neighborhoods of:

- McCully-Moiliili, Honolulu, beside Washington Middle School and in the vicinity of Kaimuki and McKinley High Schools and Lunalilo Elementary School.
- Nanakuli beside Nanaikapono Elementary and in the vicinity of Nanakuli Elementary and Ma’ili Elementary Schools, and Ka Waihona O Ka Na’auao Public Charter School, as well as our teen center located beside Nanakuli Intermediate & High School
- Waianae beside Waianae Elementary and in the vicinity of Makaha, Leihoku and Maili Elementary Schools, Waianae Intermediate, Waianae High School, Kamaile Academy and Adventist Malama Elementary & Maili Bible private schools.
- Kailua beside Kailua Intermediate School, with nine nearby feeder elementary schools, and two high schools: Kailua and Kalaheo.
- Ewa Beach beside Campbell High School and Ilima Intermediate School and in the vicinity of Pohakea, Ewa Beach, Ewa, Makakilo, Maukalani, Kaimiloa, Keoneula, and Holomua Elementary schools, Ewa Makai and Kapolei Middle schools, Kapolei High School, Lanakila Baptist,

Friendship Bible, Our Lady of Perpetual Help Private School, Island Pacific Academy and Hawaii Tech Academy.

- West Kauai at the Waimea Tech Center in the vicinity of Waimea High School, Waimea Canyon Middle School, Eleele and Kekaha Schools and St. Theresa School in Kekaha.
- Lihue in the vicinity of Elsie H. Wilcox Elementary, Chiefess Kamakahele Middle School and Kauai High School, as well as Island School and Kawaikini Public Charter School.
- Kapa'a beside Kapa'a High, Middle and Elementary schools and St. Catherine's School.

Additionally, BGCH consistently visits multiple gathering places in all the communities we serve to provide outreach services to teens, youth and their families.

II. Service Summary and Outcomes

The Service Summary shall include a detailed discussion of the applicant's approach to the request. The applicant shall clearly and concisely specify the results, outcomes, and measures of effectiveness from this request. The applicant shall:

- 1. Describe the scope of work, tasks and responsibilities;**
Facility and network improvements and upgrades are necessary to ensure the safety of our members, staff and volunteers. Conservative planning measures combined with regular planned maintenance and repairs have allowed us to operate our clubs for many years without major capital repairs, however, we have reached a place where these critical upgrades and improvements cannot be delayed any longer without compromising safety. BGCH will outsource project management, planning, design and construction to companies with expertise in these fields through an RFP process to ensure best value and outcomes. Please see "Schedule A" attached for detailed list of work needed.
- 2. Provide a projected annual timeline for accomplishing the results or outcomes of the service;**
July – September 2018: issue RFP to project management, engineering and architectural firms, contract and design.
October – November 2018: issue RFP to construction and IT firms, contract.
December 2018 – June 2019: construction, inspections, punch lists, completion.
- 3. Describe its quality assurance and evaluation plans for the request. Specify how the applicant plans to monitor, evaluate, and improve their results; and** CIP work will be monitored and managed by BGCH executive management, clubhouse directors and project manager proposed to be contracted for the term of the project. Staff are experienced in planning and managing capital projects to completion with BGCH and other organizations. Quality assurance and evaluation

will be assessed continually through professional drawings/plans, hiring companies expert in the required fields, regular inspections, permits and licensing.

BGCH expects members, volunteers and staff to increase their feelings of safety and security as the facilities we operate within are made safer. We expect clubhouse injuries and accidents to decrease, maintenance fees to decrease, and value of assets to increase with improvements. Member, volunteer and staff safety will be measured through surveys pre and post construction. We believe liability and workers compensation premiums will decrease along with liability issues. Costs will be evaluated annually.

4. **List the measure(s) of effectiveness that will be reported to the State agency through which grant funds are appropriated (the expending agency). The measure(s) will provide a standard and objective way for the State to assess the program's achievement or accomplishment. Please note that if the level of appropriation differs from the amount included in this application that the measure(s) of effectiveness will need to be updated and transmitted to the expending agency.**
 1. Actual tangible and completed capital improvements in network systems, buildings and grounds will be reported with details.
 2. Survey results, pre and post construction, from members, staff and volunteers as to their feelings of safety at the clubhouses will be reported.
 3. Completion of the annual BGCA National Youth Outcomes Survey in March of 2018 and 2019, which surveys club members for feelings of safety, fun, engagement and other key outcomes.
 4. Increase in membership and outreach levels.
 5. Increase average daily attendance.
 6. Increase in assessed property and/or building values.
 7. Decrease in crime related incidents through theft and property damage with increased security systems and upgrades to grounds and landscaping to improve visibility.

III. Financial

Budget

1. The applicant shall submit a budget utilizing the enclosed budget forms as applicable, to detail the cost of the request.
2. The applicant shall provide its anticipated quarterly funding requests for the fiscal year 2018.

Quarter 1	Quarter 2	Quarter 3	Quarter 4	Total Grant
150,000	150,000	500,000	150,000	950,000

- 3. The applicant shall provide a listing of all other sources of funding that they are seeking for fiscal year 2019.**

BGCH will begin a capital fundraising campaign in the first quarter of 2018 with the goal of raising \$830,000 from private foundations and individual contributions in 2018, and a goal of \$5-\$7mil in the next five years.

BGCH has a confirmed grant from CPB Foundation in the amount of \$20,000 to support capital improvements at the Lihue clubhouse for a Teen Center. Additionally, BGCH is in discussions with Unum Foundation for \$35,000, for the same project. Other private foundations and individual funders have expressed interest in supporting BGCH's campaign, including local foundations who are well known for providing support for capital projects and who have funded BGCH in the past.

Other non CIP related requests for funding have been submitted to NOAA, City & County of Honolulu GIA, and Kamehameha Schools.

- 4. The applicant shall provide a listing of all state and federal tax credits it has been granted within the prior three years. Additionally, the applicant shall provide a listing of all state and federal tax credits they have applied for or anticipate applying for pertaining to any capital project, if applicable.**

N/A

- 5. The applicant shall provide a listing of all federal, state, and county government contracts and grants it has been and will be receiving for program funding.**

BGCA OJP grants (7)
DOE Native Hawaiian Education Grant
DOE NHEEI Education Grant
DHS OYS Nanakuli and Waimea
DHS TANF Kauai
State of Hawaii, Dept of Health, ADAD Waianae
State of Hawaii, Dept of Health, ADAD Kauai

BGCH will receive approximately \$250,000 from Pacific Youth Foundation in 2018 to support programming.

BGCH received a \$500,000 grant from Microsoft to provide updated system and application software licenses; approximately \$300,000 is still available to spend. Upgrades to current network system are needed to provide a stable platform for

application software, including our member tracking, accounting, and development applications.

6. The applicant shall provide the balance of its unrestricted current assets as of December 31, 2017.

\$512,755

IV. Experience and Capability

1. Necessary Skills and Experience

The applicant shall demonstrate that it has the necessary skills, abilities, knowledge of, and experience relating to the request. State your experience and appropriateness for providing the service proposed in this application. The applicant shall also provide a listing of verifiable experience of related projects or contracts for the most recent three years that are pertinent to the request.

BGCH executive management and clubhouse directors and staff are well versed in planning and managing multiple capital projects at all sites.

1. In 2015 BGCH officially opened its Windward clubhouse after 8 years of planning, capital fundraising and finally construction. Construction broke ground in 2014 and the project completed on time and on budget in May 2015. The completed 7200 sq foot facility includes a social recreation room, three classrooms, offices, a conference room, reception area, foyer, teaching kitchen, storage, and additionally an outside program area and garden. At the time of constructing the clubhouse, a second project was completed concurrently to renovate Kailua Intermediate's boys' locker room, exercise room and laundry room to create a boys' and girls' locker room, laundry room and exercise room. This second stage was in partnership with Department of Education and a requirement for BGCH as part of the deal in building our new clubhouse on the school site. This second project was also completed on time and on budget. Total value of project: \$7.4mil (\$4.8mil capital costs plus \$2.6mil building maintenance endowment).
2. In the past three years BGCH has managed and completed energy efficiency air conditioning upgrades at four clubhouses, all of which required modifications to the buildings to accommodate the new systems. Projects were completed on time and on budget. Combined value of projects: \$250,000.
3. In 2014 an extension was built on the Lihue clubhouse to increase program space; the final result was a 1600 sq ft learning center. Project was completed on time and on budget. Value \$150,000.

2. Facilities

The applicant shall provide a description of its facilities and demonstrate its adequacy in relation to the request. If facilities are not presently available, describe plans to secure facilities.

BGCH operates eight brick & mortar clubhouses and one separate teen center on the islands of O'ahu and Kaua'i. All clubhouses are multi-space facilities which include learning centers (classrooms), kitchens or concession areas, recreation areas, multi-function spaces, meeting rooms, storage rooms, restrooms, and common areas. Three clubhouses have full gymnasiums, two clubhouses have multi-media rooms, and one clubhouse has an outdoor amphitheater and native Hawaiian garden. Many buildings were built in the 1990's, or earlier, and require much needed facility and IT network upgrades and safety improvements.

1. Charles C. Spalding Clubhouse (est. 1975)
1704 Waiola Street, Honolulu
2. Hale Pono Clubhouse (est 1989; new building 2002)
91-884 Fort Weaver Road, Suite A, Ewa Beach
3. NFL YET Hawaii Clubhouse (est 1997; new building 2009)
989-159 Mano Avenue, Nanakuli
4. Nanakuli Teen Center (est 2008)
89-969 Lahikiola Place, Wai'anae
5. Wai'anae Clubhouse (est 1988)
85-165 Plantation Road, Wai'anae
6. Windward Clubhouse (est 2006; new building 2015)
145 S. Kainalu Drive, Kailua
7. Kapa'a Clubhouse (est 1993)
4695 Malihuna Road, Kapa'a
8. Lihue Clubhouse (est 2004; addition 2013)
4193 Hardy Street, Lihue
9. West Kaua'i Clubhouse (est 2014)
9565 Kaumualii Highway, Suite 105, Waimea

V. Personnel: Project Organization and Staffing

1. Proposed Staffing, Staff Qualifications, Supervision and Training

The applicant shall describe the proposed staffing pattern and proposed service capacity appropriate for the viability of the request. The applicant shall provide the qualifications and experience of personnel for the request and shall describe its ability to supervise, train and provide administrative direction relative to the request.

1. Tim Motts, BGCH President and CEO, has spent the past twenty one years in the non-profit field, culminating in his current role as head one of the largest Boys and Girls Clubs in the country, with the Boys and Girls Club of Hawaii.. Prior to his 2006 appointment as Chief Professional Officer of the Boys and Girls Club of West San Gabriel Valley, he served as the Executive Director of the Beach Cities YMCA within the YMCA of Orange County. He holds his Bachelor's Degree from California Polytechnic Pomona University in Social Sciences and his Master's Degree in Counseling from Loyola Marymount University. His most recent Board Appointments include the National Native Lands Committee for the Boys and Girls Club of America, and locally, the Vice Chair of the Positive Coaching Alliance- Hawaii. He has led capital campaigns and improvement projects totaling well over \$10,000,000.
2. Paddy Kauhane, BGCH Executive Vice President & CFOO, has over 30 years in non-profit sectors in Hawaii and Vancouver, Canada. She is experienced managing multi-million dollar budgets and most recently as Sr. Vice President and CFO of Bishop Museum, managed two State of Hawaii CIP grants: \$1mil Deferred Maintenance and \$2mil Energy Efficiency Upgrades grants. During her time in Canada, she was part of the senior management team responsible for capital development, planning and constructing a multi-media Arts Center and 486 seat main stage theater in partnership with the regional district government.
3. Nadia Assaf, BGCH Senior Vice President and Chief Advancement Officer, has over twenty years of project and people management in senior banking positions. Her recent role before joining Boys and Girls Club as Director of Human Resources, was at American Savings Bank where she was there for seven years as a Vice President in Human Resources and Head of Recruitment and Strategic Projects. Some of those projects include overhauling the recruitment and hiring practices to include standard operating procedures and data and technology efficiencies. She partnered with data scientists to build a data analyst internship program to help solve complex problems throughout the bank and in different departments. Nadia's expertise is in identifying gaps and opportunities in organizations and finding ways to improve processes and systems while bringing the best out of her staff and those that she works with. Nadia holds a Bachelor's Degree in Nutrition and Food Service Management from Northern Illinois University and graduated with an MBA from Hawaii Pacific University. She is currently enrolled in USC's Doctoral Program in Education with an emphasis on Leadership and Organizational Change.
4. Claudia Fernandez, BGCH Director of Programs, Safety and Quality Control, has been with the organization for 12 years, implementing and executing multiple youth programs for ages 6-18 years. Claudia oversees and manages employees, operations, budgets, contracts and is a National BGCA trainer. Claudia is experienced in board development and community capacity building. She had a major part in managing the clubhouse renovation and upgrade projects over the past 11 years.

5. Robert Carr, BGCH I.T. Director, has 20 years of experience in the Information Technology field, including development, programming, networking and project managements. The past 5 years have been spent in a director's role. Bob's recent major projects include implementing a cloud networking initiative and secure networks, email migration from hosted exchange to Office 365, implementing file server cloud backup systems, and developing an iOS application for victims of sexual assault.

2. Organization Chart

The applicant shall illustrate the position of each staff and line of responsibility/supervision. If the request is part of a large, multi-purpose organization, include an organization chart that illustrates the placement of this request.

Please see organization chart attached.

3. Compensation

The applicant shall provide the annual salaries paid by the applicant to the three highest paid officers, directors, or employees of the organization by position.

President and CEO; \$173,304
Executive Vice President & CFOO; \$124,944
Senior Vice President & CAO; \$111,590

VI. Other

1. Litigation

The applicant shall disclose any pending litigation to which they are a party, including the disclosure of any outstanding judgement. If applicable, please explain.

N/A

2. Licensure or Accreditation

The applicant shall specify any special qualifications, including but not limited to licensure or accreditation that the applicant possesses relevant to this request.

N/A

3. Private Educational Institutions

The applicant shall specify whether the grant will be used to support or benefit a sectarian or non-sectarian private educational institution. Please see Article X, Section 1, of the State Constitution for the relevance of this question.

N/A

4. Future Sustainability Plan

The applicant shall provide a plan for sustaining after fiscal year 2018-19 the activity funded by the grant if the grant of this application is:

- (1) Received by the applicant for fiscal year 2018-19, but
- (2) Not received by the applicant thereafter.

Funds are requested for the fiscal year 2018-19 and are for special capital projects that will be one time improvements.

In terms of capacity building, by increasing efficiencies throughout our organizations our staff will work more effectively. This in turn increases our ability to add programs, administer grants, and build revenues. Staff who don't have to worry about safety related matters can concentrate on programmatic work, which increases capacity, which leads to a healthier and more robust organization.

Creating a secure information technology environment reduces cyber liability; again positive effect on insurance and related costs. The same can be said for increasing safety and security through facility improvements and upgrades.

Safe and happy members will encourage others to come to our clubhouses, which increases our membership numbers.

Additionally, BGCH development team are including in the capital campaign a plan to build an endowment which will provide earnings to support a contingency fund equal to annual depreciation. This fund will be used to fund future facility repairs, improvements and upgrades.

5. Certificate of Good Standing (If the Applicant is an Organization)

If the applicant is an organization, the applicant shall submit one (1) copy of a certificate of good standing from the Director of Commerce and Consumer Affairs that is dated no earlier than December 1, 2016.

Please see attached.

6. Declaration Statement

Please see attached.

7. Public Purpose

Boys & Girls Club of Hawaii attests that, if awarded, the grant will be used for a public purpose pursuant to Section 42F-102, Hawaii Revised Statutes.

The (1) name of the requesting organization is Boys & Girls Club of Hawaii, (2) the public purpose for the grant, (3) the services to be supported by the grant, (4) the target group; and (5) the cost of the grant and the budget are all detailed in this application.

SCHEDULE A

Scope of Work

The Scope of Work will include upgrades and improvements throughout the eight clubhouse buildings, grounds and I.T. network systems as follows:

SCHEDULE A

Scope of Work

The Scope of Work will include upgrades and improvements throughout the eight clubhouse buildings, grounds and I.T. network systems as follows:

1. Repair and replace rooftops and gutters.
2. Upgrades to wiring and electrical systems where needed.
3. Improved lighting in exterior and interior spaces to provide better visibility.
4. Walkway and exterior step repairs.
5. Landscape and grounds upgrades and repairs, including drainage issues, tree removal and trimming, improving visibility by removing shrubs and trees near buildings.
6. Restructuring and removing interior walls to improve visibility and increase supervision inside club houses.
7. Replace old and sealed windows with proper ventilated and secured windows.
8. Upgrade and/or create security systems to include interior and exterior cameras and intercoms.
9. Level and stabilize grounds and athletic courts.
10. Replace broken interior doors.
11. Upgrade and improve exterior and interior walls, floors and panels to remove rot, mold and pests.
12. Upgrade fire systems, smoke alarms, and fire extinguishers.
13. Upgrade and/or replace plumbing, commodes, sinks and partitions in restrooms that are in disrepair and not working.
14. Upgrade and/or replace water heaters which are not regulating water temperatures correctly.
15. Upgrade and/or replace air conditioning units.
16. Upgrade network systems to provide stability and security.
17. Install perimeter fencing to increase security.
18. Replace gymnasium seating.
19. Facility improvements to Lihue and Waianae Teen Centers.

Boys & Girls Club of Hawaii
January 2018
State GIA - CIP Grant Application Data

Section 4: Target Population to be Served

Note (*1) - Data derived from State of Hawaii DOE Statistics by Geographic Location ('15-'16 School Status and Improvement Report)

Site	% High School Dropouts Note (*1)	% School Students s/ Free or Reduced Lunch Note (*1)	% Clubhouse Membership Free/Reduced School Lunch Program	# Students Suspended from High School Note (*1)	% High School Students Graduated on Time Note (*1)	Annual Average Household Income by Geographic Location Note (*1)
Hale Pono	11.0%	47.3%	21.1%	315	86.7%	70,223
Kapaa	6.4%	53.2%	45.3%	166	90.8%	57,660
Lihue	6.8%	43.7%	29.3%	178	89.2%	67,033
Nanakuli TC	19.3%	76.0%	15.1%	111	75.0%	68,716
Nanakuli YET	N/A	84.2%	20.9%	95	N/A	64,371
Spalding	22.7%	58.3%	17.3%	120	71.2%	53,998
Waianae	25.4%	68.5%	32.2%	239	72.2%	55,683
West Kauai	6.4%	55.6%	33.9%	195	85.2%	62,894
Windward	16.0%	41.7%	19.1%	89	77.2%	85,807
Total:				1508		
Average:	14.3%	58.7%	26.0%		80.9%	65,154

Youth Population (as indicated by 2010 Census)

Location	Total Population (Census)	Youth Population - Ages 5 - 19 (Census)	BGCH Registered Members	% of Youth Served
Oahu	953,207	174,309	4,248	2.4%
Kauai	67,091	12,380	731	5.9%
Total:	1,020,298	186,689	4,979	2.7%

BUDGET REQUEST BY SOURCE OF FUNDS

Period: July 1, 2018 to June 30, 2019

Applicant: Boys & Girls Club of Hawaii

BUDGET CATEGORIES	Total State Funds Requested (a)	Total Federal Funds Requested (b)	Total County Funds Requested (c)	Total Private/Other Funds Requested (d)
A. PERSONNEL COST				
1. Salaries				
2. Payroll Taxes & Assessments				
3. Fringe Benefits				
TOTAL PERSONNEL COST				
B. OTHER CURRENT EXPENSES				
1. Airfare, Inter-Island				
2. Insurance				
3. Lease/Rental of Equipment				
4. Lease/Rental of Space				
5. Staff Training				
6. Supplies				
7. Telecommunication				
8. Utilities				
9				
10				
11				
12				
13				
14				
15				
16				
17				
18				
19				
20				
TOTAL OTHER CURRENT EXPENSES				
C. EQUIPMENT PURCHASES				
D. MOTOR VEHICLE PURCHASES				
E. CAPITAL	950,000			830,000
TOTAL (A+B+C+D+E)	950,000			830,000
SOURCES OF FUNDING		Budget Prepared By:		
(a) Total State Funds Requested	950,000	Paddy Kaubane (808) 949-4203		
(b) Total Federal Funds Requested		[Redacted] (print) Phone		
(c) Total County Funds Requested		[Redacted] 18-Jan-18		
(d) Total Private/Other Funds Requested	830,000	[Redacted] Official Date		
TOTAL BUDGET	1,780,000	Tim Motts, President & CEO Name and Title (Please type or print)		

BUDGET JUSTIFICATION - PERSONNEL SALARIES AND WAGES

Period: July 1, 2018 to June 30, 2019

Applicant: Boys & Girls Club of Hawaii

POSITION TITLE	FULL TIME EQUIVALENT	ANNUAL SALARY A	% OF TIME ALLOCATED TO GRANT REQUEST B	TOTAL STATE FUNDS REQUESTED (A x B)
				\$ -
				\$ -
				\$ -
				\$ -
				\$ -
				\$ -
				\$ -
				\$ -
				\$ -
				\$ -
				\$ -
				\$ -
				\$ -
				\$ -
				\$ -
				\$ -
				\$ -
				\$ -
TOTAL:				0.00
JUSTIFICATION/COMMENTS:				

BUDGET JUSTIFICATION - EQUIPMENT AND MOTOR VEHICLES

Period: July 1, 2018 to June 30, 2019

Applicant: Boys & Girls Club of Hawaii

DESCRIPTION EQUIPMENT	NO. OF ITEMS	COST PER ITEM	TOTAL COST	TOTAL BUDGETED
			\$ -	
			\$ -	
			\$ -	
			\$ -	
			\$ -	
TOTAL:				0
JUSTIFICATION/COMMENTS:				

DESCRIPTION OF MOTOR VEHICLE	NO. OF VEHICLES	COST PER VEHICLE	TOTAL COST	TOTAL BUDGETED
			\$ -	
			\$ -	
			\$ -	
			\$ -	
			\$ -	
TOTAL:				0
JUSTIFICATION/COMMENTS:				

BUDGET JUSTIFICATION - CAPITAL PROJECT DETAILS

Period: July 1, 2018 to June 30, 2019

Applicant: Boys & Girls Club of Hawaii

FUNDING AMOUNT REQUESTED						
TOTAL PROJECT COST	ALL SOURCES OF FUNDS RECEIVED IN PRIOR YEARS		STATE FUNDS REQUESTED	OF FUNDS REQUESTED	FUNDING REQUIRED IN SUCCEEDING YEARS	
	FY: 2016-2017	FY: 2017-2018	FY:2018-2019	FY:2018-2019	FY:2019-2020	FY:2020-2021
PLANS			100,000			
LAND ACQUISITION						
DESIGN			50,000	50,000		
CONSTRUCTION			600,000	530,000		
EQUIPMENT			200,000	250,000		
TOTAL:			950,000	830,000		
JUSTIFICATION/COMMENTS: Budget is based on scope of work provided in "Schedule A". The bulk of the funding will pay for design, plans and construction costs. Equipment includes lighting, a/c units, security systems, network systems, fire systems, and gymnasium seating. We expect equipment costs will be included as part of construction RFP's with outside companies completing all construction and installation.						

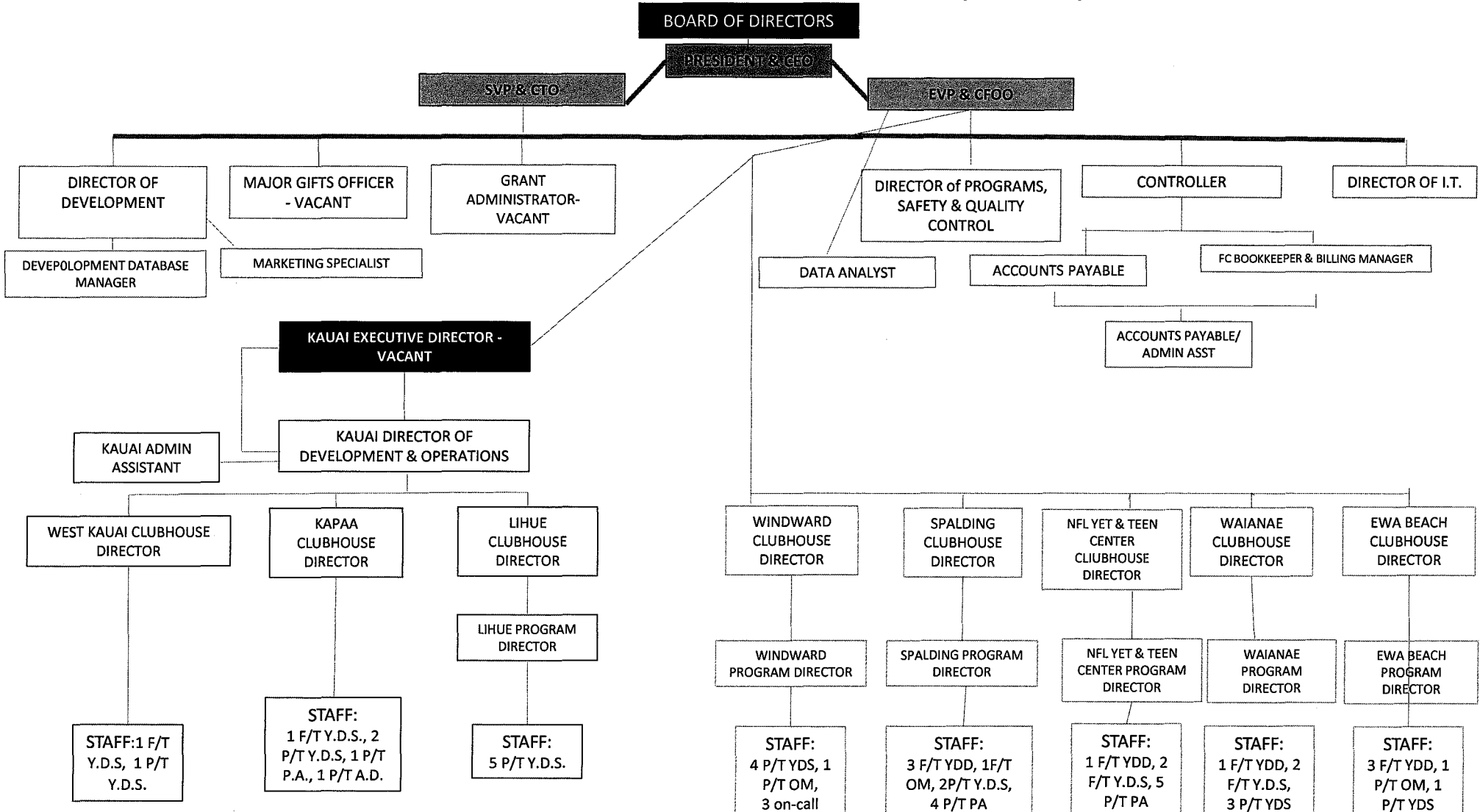
GOVERNMENT CONTRACTS, GRANTS, AND / OR GRANTS IN AID

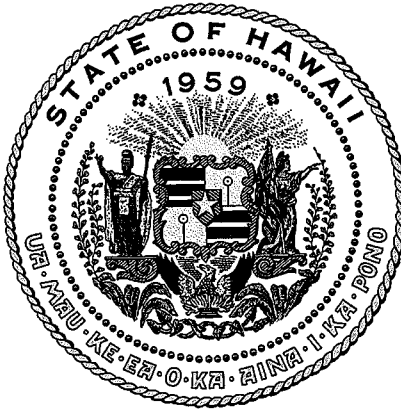
Applicant: Boys & Girls Club of Hawaii

Contracts Total: 6,086,441

	CONTRACT DESCRIPTION	EFFECTIVE DATES	AGENCY	GOVERNMENT ENTITY (U.S. / State / Haw / Hon / Kau / Mau)	CONTRACT VALUE
1	BGCA - OJP grants (7)	1/1/18 - 12/31/18	Passthrough OJP	U.S.	185,000
2	DOE Native Hawaiian Education	9/15/15-9/14/18	DOE	U.S.	2,547,110
3	DHS OYS	7/1/17 - 6/30/18	Dept Health	State	40,000
4	DHS TANF	1/1/18-12/31/18	DHHS	U.S.	250,000
5	ADAD - Waianae	7/1/16-6/30/18	Dept Health	State	250,000
6	ADAD - Kauai	7/1/16-6/30/18	Dept Health	State	230,400
7	DOE NHEEI	10/1/17-09/30/20	DOE	U.S.	2,583,931
8					
9					
10					
11					
12					
13					
14					
15					
16					
17					
18					
19					
20					
21					
22					
23					
24					
25					
26					
27					
28					
29					
30					

BOYS & GIRLS CLUB OF HAWAII ORGANIZATIONAL CHART (EFF. 1.1.18)





Department of Commerce and Consumer Affairs

CERTIFICATE OF GOOD STANDING

I, the undersigned Director of Commerce and Consumer Affairs of the State of Hawaii, do hereby certify that

BOYS AND GIRLS CLUB OF HAWAII

was incorporated under the laws of Hawaii on 06/21/1960 ; that it is an existing nonprofit corporation; and that, as far as the records of this Department reveal, has complied with all of the provisions of the Hawaii Nonprofit Corporations Act, regulating domestic nonprofit corporations.



IN WITNESS WHEREOF, I have hereunto set my hand and affixed the seal of the Department of Commerce and Consumer Affairs, at Honolulu, Hawaii.

Dated: January 18, 2018

Director of Commerce and Consumer Affairs

**DECLARATION STATEMENT OF
APPLICANTS FOR GRANTS PURSUANT TO
CHAPTER 42F, HAWAII REVISIED STATUTES**

The undersigned authorized representative of the applicant certifies the following:

- 1) The applicant meets and will comply with all of the following standards for the award of grants pursuant to Section 42F-103, Hawaii Revised Statutes:
 - a) Is licensed or accredited, in accordance with federal, state, or county statutes, rules, or ordinances, to conduct the activities or provide the services for which a grant is awarded;
 - b) Complies with all applicable federal and state laws prohibiting discrimination against any person on the basis of race, color, national origin, religion, creed, sex, age, sexual orientation, or disability;
 - c) Agrees not to use state funds for entertainment or lobbying activities; and
 - d) Allows the state agency to which funds for the grant were appropriated for expenditure, legislative committees and their staff, and the auditor full access to their records, reports, files, and other related documents and information for purposes of monitoring, measuring the effectiveness, and ensuring the proper expenditure of the grant.

- 2) If the applicant is an organization, the applicant meets the following requirements pursuant to Section 42F-103, Hawaii Revised Statutes:
 - a) Is incorporated under the laws of the State; and
 - b) Has bylaws or policies that describe the manner in which the activities or services for which a grant is awarded shall be conducted or provided.

- 3) If the applicant is a non-profit organization, it meets the following requirements pursuant to Section 42F-103, Hawaii Revised Statutes:
 - a) Is determined and designated to be a non-profit organization by the Internal Revenue Service; and
 - b) Has a governing board whose members have no material conflict of interest and serve without compensation.

Pursuant to Section 42F-103, Hawaii Revised Statutes, for grants used for the acquisition of land, when the organization discontinues the activities or services on the land acquired for which the grant was awarded and disposes of the land in fee simple or by lease, the organization shall negotiate with the expending agency for a lump sum or installment repayment to the State of the amount of the grant used for the acquisition of the land.

Further, the undersigned authorized representative certifies that this statement is true and correct to the best of the applicant's knowledge.

Boys & Girls Club of Hawaii



(or Organization)

January 19, 2018

(Date)

Tim Motts, President & CEO

(Typed Name)

(Title)