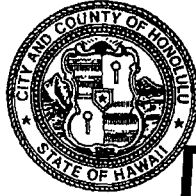


DEPARTMENT OF PARKS & RECREATION
CITY AND COUNTY OF HONOLULU

1000 Uluohia Street, Suite 309, Kapolei, Hawaii 96707
Phone: (808) 768-3003 • Fax: (808) 768-3053
Website: www.honolulu.gov

KIRK CALDWELL
MAYOR



MICHELE K. NEKOTA
DIRECTOR

JEANNE C. ISHIKAWA
DEPUTY DIRECTOR

DEPT. COMM. NO. 301

January 31, 2017

The Honorable Ronald D. Kouchi
President
State Senate
415 South Beretania Street, Room 409
Honolulu, Hawaii 96813

Dear President Kouchi:

Please find attached report entitled "Improve Public Beach Access for Persons with Disabilities in Hawaii" from the Department of Parks and Recreation of the City and County of Honolulu. This report is written in response to House Concurrent Resolution No. 141, H.D.1, S.D.1.

If you have any questions, please contact Christina Strunk of my staff at 768-3025.

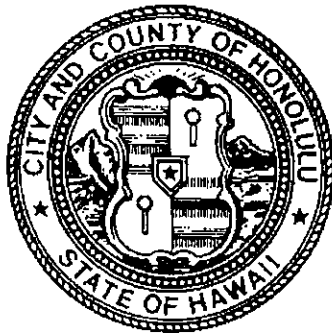
Sincerely,

A handwritten signature in black ink, appearing to read "Michele Nekota". The signature is fluid and cursive, written over a light blue horizontal line.

Michele Nekota
Director

REPORT TO THE TWENTY-NINTH LEGISLATURE
STATE OF HAWAII
2017 REGULAR SESSION

IMPROVE PUBLIC BEACH ACCESS
for Persons with Disabilities in Hawai'i



Prepared by the
DEPARTMENT OF PARKS AND RECREATION
City and County of Honolulu

In response to
House Concurrent Resolution 141, H.D.1, S.D.1

December 2016

TABLE OF CONTENTS

Introduction	1
House Concurrent Resolution No. 141, H.D. 1, S.D. 1	
Definitions	
Department of Parks and Recreation, City and County of Honolulu	2-3
Department of Land and Natural Resources, State of Hawai'i	4-5
Beach Access Assessment	6-7
Future Action	7
Appendix A – Beach Access Matrix	
Beach Access Assessment Guidelines	8-11
Beach Access Assessment Matrix	12-13
Appendix B – Ocean Recreation Management Map (ORMA), O'ahu	
North Shore O'ahu Ocean Recreation Management Area	14
Windward O'ahu Ocean Recreation Management Area	15
South O'ahu Ocean Recreation Management Area	16
Appendix C – Department of Parks and Recreation	
Beach Access Equipment	17-18
Beach Park Campsites	19-32
References	33
Acknowledgement	34

INTRODUCTION

The Department of Parks and Recreation (DPR) has jurisdiction of over 280 parks and other sites covering more than 6,000 acres on the Island of O'ahu. Beach parks are the most popular of all park types, but expansion of the beach park inventory is inherently constrained by a limited supply of shorefront land with desirable characteristics for recreation, such as sandy beaches and offshore reefs. Many shoreline properties are already committed to some other use, are prohibitively expensive, or are too small to support a beach park unless consolidated with adjoining properties.¹

This report is in response to House Concurrent Resolution No. 141, H.D. 1, S.D. 1, as adopted by both the Senate and House of Representatives of the Twenty-Eighth Legislature of the State of Hawai'i, Regular Session of 2015. It recognized the importance for providing access to Hawai'i's beaches for everyone, including persons with disabilities. The following report will provide information and descriptions of the City and County of Honolulu, Department of Parks and Recreation beach parks, including, but not limited to:

- Public restroom facilities;
- Application of Ocean Recreation Management Area (ORMA)

Information in this report was compiled on July 31, 2016, and is also available on the City and County of Honolulu's Geographic Information System (GIS). Information shown on these maps are derived from public records that are constantly undergoing change and does not replace a site survey. This report is not warranted for content or accuracy.

¹ City and County of Honolulu, Department of Parks and Recreation. Index of O'ahu Parks and Facilities. April 1997.

HOUSE CONCURRENT RESOLUTION

REQUESTING THE DEPARTMENT OF LAND AND NATURAL RESOURCES AND THE
COUNTIES TO IMPROVE PUBLIC BEACH ACCESS FOR PERSONS WITH
DISABILITIES IN HAWAII.

1 WHEREAS, Hawaii is known worldwide for its beaches and is
2 committed to public beach access to all residents and visitors;
3 and
4

5 WHEREAS, beach access for persons with disabilities,
6 including veterans, is extremely limited, especially for those
7 with mobility limitations; and
8

9 WHEREAS, access to Hawaii's beaches is meant to be open for
10 all residents and visitors and access to beaches should be
11 improved so as not to discriminate against persons with a
12 disability; now, therefore,
13

14 BE IT RESOLVED by the House of Representatives of the
15 Twenty-eighth Legislature of the State of Hawaii, Regular
16 Session of 2015, the Senate concurring, that the Department of
17 Land and Natural Resources and the counties that maintain beach
18 transit corridors are requested to improve public beach access
19 to the shoreline for persons with disabilities at public beaches
20 that have a public restroom facility or are in an ocean
21 recreation management area; and
22

23 BE IT FURTHER RESOLVED that in providing public access to
24 the shoreline at beaches, the Department of Land and Natural
25 Resources and the responsible counties consider the topography
26 and physical characteristics of the beach transit corridor; and
27

28 BE IT FURTHER RESOLVED that the Department of Land and
29 Natural Resources and the counties report to the Legislature no
30 later than twenty days prior to the convening of the Regular
31 Session of 2017 on the status of public beach access to the



1 shoreline for persons with disabilities at public beaches that
2 have a public restroom facility or are in an ocean recreation
3 management area; and

4

5 BE IT FURTHER RESOLVED that certified copies of this
6 Concurrent Resolution be transmitted to the Chairperson of the
7 Board of Land and Resources and the mayors of Hawaii County,
8 Maui County, Kauai County, and the City and County of Honolulu.

9



DEFINITIONS

Department of Parks and Recreation, City and County of Honolulu

Island-Based Parks²

Parks that serve a wide range of recreational needs for the population of O’ahu. The City and County of Honolulu’s park and recreational facilities’ standard for island-wide parks is eight (8) acres of park space per every 1,000 persons. The classifications and definitions for Island-Based Parks are as follows:

- Beach/Shoreline Parks* : Areas along or near the shoreline that may include facilities and support services for water activities, sunbathing, picnicking, and other passive recreational activities.
- Beach/Shoreline Right-of-Ways (ROWs)* : Access lanes to beaches and to the shoreline where residential or other uses prevent development of a Beach/Shoreline Park. In areas where residential or other uses prevent full public access to the shoreline, beach right-of-ways may be provided at an approximate interval of one-half mile.
- Botanical Gardens* : Areas developed for the recreational and educational appreciation of specific types of plants and plant communities.
- Nature Parks/Preserve* : Generally large areas maintained primarily to preserve or conserve the unique natural features. Includes nature preserves.
- Regional Parks* : Large areas that may serve the entire island or a region of the island and may include a variety of recreation park types and facilities, natural and cultural sites.

² City and County of Honolulu, Department of Parks and Recreation. Index of O’ahu Parks and Facilities. April 1997.

DEFINITIONS

Department of Parks and Recreation, City and County of Honolulu

Community-Based Parks³

Parks that generally serve the appropriate recreational needs of the residential areas of the island. The City's park and recreational facilities standard for community-based parks is two (2) acres of park space per every 1,000 persons. However, this standard is more applicable to developing areas where land shortages are not an acute as some older communities and should be considered flexible to meet the particular and reasonable needs of each community. Community-based parks are classified as follows:

- Community Parks* : Approximately 10 acres in size and serving approximately 10,000 people. Facilities may include playfields, play courts, passive areas, and a recreation building.
- District Parks* : Approximately 20 acres in size and serving approximately 25,000 people. Facilities may include playfields, play courts, passive areas, a gymnasium/recreation complex and a swimming pool.
- Malls* : Long, narrow pedestrian walkways in commercial areas. Facilities may include benches, drinking fountains, arbors, and landscaping.
- Mini Parks* : Small landscaped areas serving high density neighborhoods as well as high density business and industrial areas. Facilities may include benches, picnic tables and a children's play area.
- Miscellaneous* : Includes slide or slope areas, remnant parcels, community gardens, recreation centers, and plant nurseries.
- Neighborhood Parks* : Approximately 6 acres in size and serving approximately 5,000 people. Facilities may include playfields, play courts, passive areas, and a comfort station.
- Urban Parks* : Passive landscaped areas including squares and triangles that are usually located in residential or business areas.

³ City and County of Honolulu, Department of Parks and Recreation. [Index of O'ahu Parks and Facilities](#). April 1997.

DEFINITIONS

Department of Land and Natural Resources, State of Hawai'i

The following definitions are referenced to understand the scope of HCR 141 and ensure conformity when identifying and classifying assessment factors and referencing established definitions in various existing Hawai'i statues and regulations.

- Beach : An area covered with sand or small rocks that is next to an ocean or lake. [Disability and Communication Access Board, Hawaii Outdoor Developed Areas Accessibility Guidelines]
- Beach Access Route : A continuous, unobstructed path that crosses the surface of the beach that allows pedestrians a beach transit corridor. For the purposes of this section, "shoreline" shall have the same meaning as in section 205A-1. [Section 115-5, Hawai'i Revised Statutes (HRS)]
- Commercial Purpose : Those land uses which entail or comprise the exchange or buying and selling of commodities, or the providing of services, or relating to or connected with trade, traffic in goods and services or commerce in general; provided, however, that the use of land for public utility purposes shall not be considered a commercial purpose. [Section 13-5-2, Hawai'i Administrative Rules (HAR)]
- Conservation District : Those lands within the various counties of the State and state marine waters bounded by the conservation district line, as established under provisions of Act 187, Session Laws of Hawaii, 1961, and Act 205, Session Laws of Hawaii 1963, or future amendments thereto. [Section 13-5-2, HAR]
- Historic Property : Any building, structure, object, district, area, or site, including Heiau and underwater site, which is over fifty years old or otherwise defined in Section 6E-1, HRS. [Section 13-5-2, HAR]
- Land : All real property, fast or submerged, and all interests therein, including fauna, flora, minerals and all such natural resources, unless otherwise expressly provided. [Section 13-5-2, HAR]
- Landowner : The record owner of the property or the record owner's agent, including a lessee, tenant, property manager, or trustee. [Section 115-9(e), HRS]
- Natural Area Reserve : Those state lands that have been designated as part of the Hawaii Natural Area Reserve System by DLNR pursuant to section 195-4, HRS. [Section 13-209-1, HAR]
- Natural Resource : Resources such as plants, aquatic life and wildlife, cultural, historic, recreational, geologic, and archeological sites, scenic areas, ecologically significant areas, watersheds, and minerals. [Section 13-5-2, HAR]
- Ocean Recreation Management Area (ORMA) : Rules whose purpose is to reduce conflicts among ocean water users, especially in areas of high activity. [Chapter 13-256, HAR] See Appendix B

DEFINITIONS

Department of Land and Natural Resources, State of Hawai'i

The following definitions are referenced to understand the scope of HCR 141 and ensure conformity when identifying and classifying assessment factors and referencing established definitions in various existing Hawai'i statues and regulations.

Outdoor Recreation Access Route	:	A continuous, unobstructed path that is intended for pedestrian use and that connects accessible camping units, picnic units, accessible viewing areas and trailheads with outdoor constructed features only. [Disability and Communication Access Board, Hawaii Outdoor Developed Areas Accessibility Guidelines]
Shoreline	:	The upper reaches of the wash of the waves, other than storm and seismic waves, at high tide during the season of the year in which the highest wash of the waves occurs, usually evidenced by the edge of vegetation growth or the upper limit of debris left by the wash of the waves. [Section 205A-1, HRS]
Shoreline Certification	:	A signed statement by the Chairperson of the Board of Land and Natural Resources that the shoreline is as located and shown on the map as of a certain date. [Section 13-222-2, HAR]
Shoreline Setback Line	:	A line established by this chapter which runs inland from the parallel to the certified shoreline at the horizontal plane. [Section 23-1.3, Revised Ordinances of Honolulu (ROH)] (Note: may vary slightly within each county's revised ordinances.)
Shoreline Survey	:	A survey performed by a registered land surveyor for the purpose of determining the location of the shoreline, in accordance with Hawaii Administrative Rules, Title 13, Chapter 222, entitled "Shoreline Certification." [Section 23-1.3, ROH] (Note: may vary slightly within each county's revised ordinances.)
Topographical Features	:	Natural and artificial geographical features that appear on a topographical map, such as, but not limited to, mountains, hills, valleys, rivers, gulches, streams, wetlands, shorelines, beaches, submerged lands, roads, unimproved roads, trails, and other such features. [Section 13-5-2, HAR]

BEACH ACCESS ASSESSMENT

Working together. To establish a uniform method of assessing and evaluating accessibility of Hawai'i's beaches, collaboration with representatives between the Department of Land and Natural Resources and the City and County of Honolulu, County of Kaua'i, County of Maui, and the County of Hawai'i was established.

What is ORMA? As the resolution requested to improve access to public beaches in an ocean recreation management area (ORMA), an understanding of what is an ORMA and where do they occur was necessary. Discussion with the Division of Boating and Ocean Recreation concluded that all beaches are either in a non-designated ORMA or a designated ORMA. This required taking an inventory of all the beaches, in each jurisdiction, for consideration. (Appendix B)

Jurisdiction. With all beaches identified, this report assessed only the public beaches within the Department of Parks and Recreation. Beaches on lands with state landowners or private landowners are not identified in this report.

Matrix. To establish a consistent evaluation tool, across the various jurisdictions, a matrix was developed to help quantify facility improvements, rate topographic features, and consider conservation restrictions. These factors, their criteria, and value rating are explained in Appendix A.

Public Input. Public comments were helpful to clarify purpose and improve evaluation criteria, with an interest in increasing beach access for people with disabilities. All public comments were considered and many were incorporated in the matrix. This matrix was provided to all counties for their use in evaluating and ranking their respective beach parks.

RESEARCH METHODS OF PROVIDING BEACH ACCESS

Universal Access Beach Mat. A mat that is usually made of injection molded low density polyethylene membrane that is portable, light weight, flexible, and inexpensive compared to a beach wheelchair. The entire width and length of the pathway surface must be raked and smoothed prior to the roll out of the mat. Inspection of joints for breaks or disconnection must be completed and repaired prior to being used. Mats may need to be anchored in various situations or rolled out when requested and rolled up for storage in a secured facility.

Boardwalk. A constructed pedestrian walkway across sand. Usually a post and beam design supporting planks as the walking surface. As a constructed feature, this method is permanently placed and secured.

All-Terrain Wheelchair. Provides users mobility on beach sand because it has extra-wide tires to increase stability on uneven or unsteady terrain. The wide tires spread the weight of the chair user and the chair across a wider surface, allowing the user to travel

on top of the sand rather than sinking. This wheelchair requires transferring from a personal wheelchair and does not provide independent access because it relies on being pushed by someone.

CONSIDERATIONS

Public Safety

The Hawaiian Lifeguard Association describes Hawai'i's beaches as "some of the most beautiful in the world and their surrounding ocean conditions are as unique as each island that they surround. They are also among the most dangerous because of large waves and strong currents." Alluring white sandy beaches with refreshing ocean waves present safety concerns.

Evaluate Various Methods

All-terrain wheelchairs provide access for wheelchair users who can be transferred and accompanied by a companion. People who are unable to transfer or smaller children may be uncomfortable or unable to use the beach wheelchair.

Universal access beach mats allow greater accessibility to provide a surface for wheelchair users and other beach goers. The limitations are the surface preparation prior to rolling out the mat, maintaining the surface during use, and rolling up the mat when not needed. Requirements for manpower to roll-out, inspect, maintain, roll-up, and store are major factors due to limited staffing. This method also restricts access to areas only on the path of the mat.

A boardwalk has all the benefits and restrictions of the beach mat without the required staff time for set-up and roll-up. Because it is a constructed feature, details regarding certain restrictions that may apply at various locations would have to be identified.

An in-depth evaluation is necessary to select the best method of providing beach access routes that accommodate the broadest spectrum of people, including those with mobility disabilities.

FUTURE ACTION

The City and County of Honolulu, Department of Parks and Recreation continues to improve and maintain our parks for recreation purposes for all individuals, including people with disabilities, as allowed by budget and availability of staff.

APPENDIX A – BEACH ASSESSMENT GUIDELINES FOR O’AHU

Department of Parks and Recreation, City and County of Honolulu

The following information and descriptions are used to assign values to various elements found in City and County of Honolulu - Department of Parks and Recreation beach parks. An assessment table was developed to identify public beach parks, verify current improvements, establish the current level of accessibility, and identify other factors that may affect beach access for persons with disabilities.

Entering values to describe the conditions at each beach park will quantify the facilities and identify improvements at beach parks. Higher point values are assigned to accessible elements and/or features and decreasing to lower point values for unreasonable, infeasible, or prohibitive elements and/or features for persons with a disability.

Instructions for Filling in Beach Access to Shoreline Assessment

CATEGORY: GENERAL INFORMATION

POINTS	This column is a calculated summation of the values entered in the assessment columns. This value can be used to rank the parks that can provide beach access.
BEACH PARK NAME or SHORELINE ACCESS NUMBER	Official name of the beach. The common or nickname of the beach may be identified in parenthesis. Enter any shoreline access identification numbers where applicable.
MANAGEMENT AUTHORITY	Name of the agency with management authority responsible for activities at the beach park.

CATEGORY: DEVELOPED ELEMENTS

PUBLIC ACCESS	Enter one of the following numbers: 2 = YES, public access with public transportation. 1 = YES, public access without public transportation. 0 = NO public access provided, restricted, or prohibited.
ORMA DESIGNATION	Identify whether the beach is in a designated or non-designated Ocean Recreation Management Area (ORMA). See attached maps for designated ORMAs. 1 = Designated ORMA 0 = Non-designated ORMA
NEIGHBORHOOD	Enter the number corresponding to the type of neighborhood surrounding the beach park: 3 = CITY/URBAN, densely populated with commerce. 2 = SUBURBAN, homes/townhomes with yards. 1 = COUNTRY/RURAL, agricultural, sparse population. 0 = REMOTE, away from developed areas.

EMERGENCY ASSISTANCE	Enter the number corresponding to the type of emergency assistance that is provided at the beach park: 2 = YES, manned lifeguard station provided. 1 = YES, emergency call box provided. 0 = NO emergency assistance provided.
PARKING	Enter the number corresponding to the type of parking that is provided at the beach park: 3 = ACCESSIBLE stalls (Americans with Disabilities Act Accessibility Guidelines (ADAAG) and Section 11-219-14, HAR) 2 = IMPROVED parking lot without accessible parking 1 = UNIMPROVED / gravel parking lot available. 0 = NO parking available except in public right-of-way.
TOILET FACILITIES	Enter the number corresponding to the type of toilet facilities that are provided at the beach park: 2 = YES, comfort station provided 1 = YES, portable toilets provided 0 = NO toilet facilities provided
SHOWERS	Enter the number corresponding to type of showers provided at the beach park: 2 = BATHING showers where disrobing is allowed. 1 = RINSING showers where disrobing is not allowed. 0 = NO showers provided
DRINKING FOUNTAIN	Enter the number corresponding to whether drinking fountains are provided at the beach park: 1 = YES, drinking fountains provided 0 = NO drinking fountains provided
PICNIC AREA	Enter the largest number corresponding to the type of picnic elements provided at the beach park: 4 = PAVILION provided for large group functions. 3 = SHELTERS provided for individual units. 2 = PICNIC tables are provided. 1 = OPEN areas for picnicking provided. 0 = NO picnicking provided or allowed.
COMMERCIAL ACTIVITIES	Enter the number corresponding to whether commercial activities are provided at the beach park. This includes any concessions, equipment rentals, classes, weddings, etc.: 1 = YES, commercial activities are provided. 0 = NO commercial activities are provided.
ACCESSIBLE RESOURCES	Enter the number corresponding to type of accessible assistive devices are provided at the beach park. 3 = YES, existing ramp or stairs into ocean available. 2 = YES, independent access provided via mats, etc. 1 = YES, assisted access provided via beach chairs, etc. 0 = NO assistive resources provided.

SECURED STORAGE	Enter the number corresponding to whether secured storage is provided at the beach park. Size should be large enough to store a beach chair or beach mats. 1 = YES, secured storage is provided. 0 = NO secured storage is provided.
HEALTH APPARATUS	Enter the largest number corresponding to whether health apparatus/equipment is provided at the beach park: 2 = PLAY, encourage children and family health and fitness. 1 = EXERCISE, encourage adult health and fitness. 0 = NO health and fitness apparatus provided.
PERMITTED CAMPING	Enter the number corresponding to whether permitted camping is provided at the beach park: 1 = YES, permitted camping is provided. 0 = NO camping allowed.
SPORT FIELD	Enter the largest number corresponding to type of designated sport field provided at the beach park. (Doesn't refer to a net between two coconut trees, throw/catch ball, Frisbees, etc.) 2 = HARDENED surface sport field provided (Ex. Basketball court, tennis court, etc.) 1 = NATURAL surface sport field provided (Ex. Beach volleyball, lawn bowling, etc.) 0 = NO sport fields are provided
COASTAL TRAIL	Enter the number corresponding to whether a coastal trail traverses and compliments access through the beach park. 2 = YES, a maintained improved coastal trail exists. 1 = YES, a natural coastal trail exists. 0 = NO coastal trail exists.

CATEGORY: NATURAL CONDITIONS

TERRAIN	Enter the largest number corresponding to the type of existing terrain at the beach park: 3 – LEVEL (slopes less than 1:12) 2 – MEDIUM (slopes less than 1:8 but greater than 1:12) 1 – ROUGH (slopes less than 1:5 but greater than 1:8) 0 – STEEP (slopes greater than 1:5)
GROUND SURFACE	Enter the largest number corresponding to the type of existing ground surfaces along beach access route: 4 – FIRM/STABLE/SLIP RESISTANT (Boardwalk, etc.) 3 – FIRM/STABLE (Grass, turf, etc.) 2 – FIRM/SEMI-STABLE (Rocks that are loose or uneven) 1 – FIRM (Dirt that is compacted but unstable when wet) 0 – SOFT (surface is not firm or stable)
EXPERIENCE	Enter the largest number corresponding to the type of recreational experience offered at the beach park: 3 – RECREATION, swimming, snorkeling, picnicking, etc. 2 – CULTURAL, Hawai'ian significance, historical, etc. 1 – WILDERNESS, wildlife encounters (seals, etc.) 0 – BACKCOUNTRY, untouched, natural conditions, etc.

BEACH SAFETY	Enter the number corresponding to the rating signs based on ocean conditions and known beach hazards : 3 – CAUTION, vigilant of changing conditions. 2 – HIGH HAZARD strong currents, surges, and shore breaks. 1 – EXTREME conditions may lead to injury. 0 – CLOSED beach is closed but beach park open.
POSTED SIGNS	Enter the number corresponding to whether signs are posted at the beach park: 1 – YES, signs are posted 0 – NO signs are posted

CATEGORY: EXCEPTIONS

Endangered Species Act [16 U.S.C. §§ 1531 et seq.]	Enter the number corresponding to whether the Endangered Species Act (ESA) applies to this beach park: 1 – NO, ESA does not apply 0 – YES, ESA applies
National Environmental Policy Act [42 U.S.C. §§ 4321 et seq.]	Enter the number corresponding to whether the National Environmental Policy Act (NEPA) applies to this beach park: 1 – NO, NEPA does not apply 0 – YES, NEPA applies
National Historic Preservation Act [16 U.S.C. §§ 470 et seq.]	Enter the number corresponding to whether the National Historic Preservation Act (NHPA) applies to this beach park: 1 – NO, NHPA does not apply 0 – YES, NHPA applies
Wilderness Act [16 U.S.C. §§ 470 et seq.]	Enter the number corresponding to whether the Wilderness Act (WA) applies to this beach park: 1 – NO, WA does not apply 0 – YES, WA applies
OTHER §115 Public Access to Coastal and Inland Recreational Areas Chapter 183C, HRS (Conservation District)	Enter the number corresponding to whether other federal, state, or local laws with the purpose to preserve threatened or endangered species, the environment, or archaeological, cultural, historical, or other significant natural features applies to this beach park: 1 – NO, OTHER does not apply 0 – YES, OTHER applies
APPLICABILITY PORTION	Enter the largest number corresponding to the percentage of beach park that the exceptions apply: 3 – NONE, does not apply 2 – less than 50% of the beach park area. 1 – less than 100% but greater than 50% of the beach park 0 – applies to 100% of the beach park

CATEGORY: ADDITIONAL INFORMATION

COMMENTS	Enter additional information for the beach park. Consider using the footnote method where providing multiple information for the same beach park.
----------	---

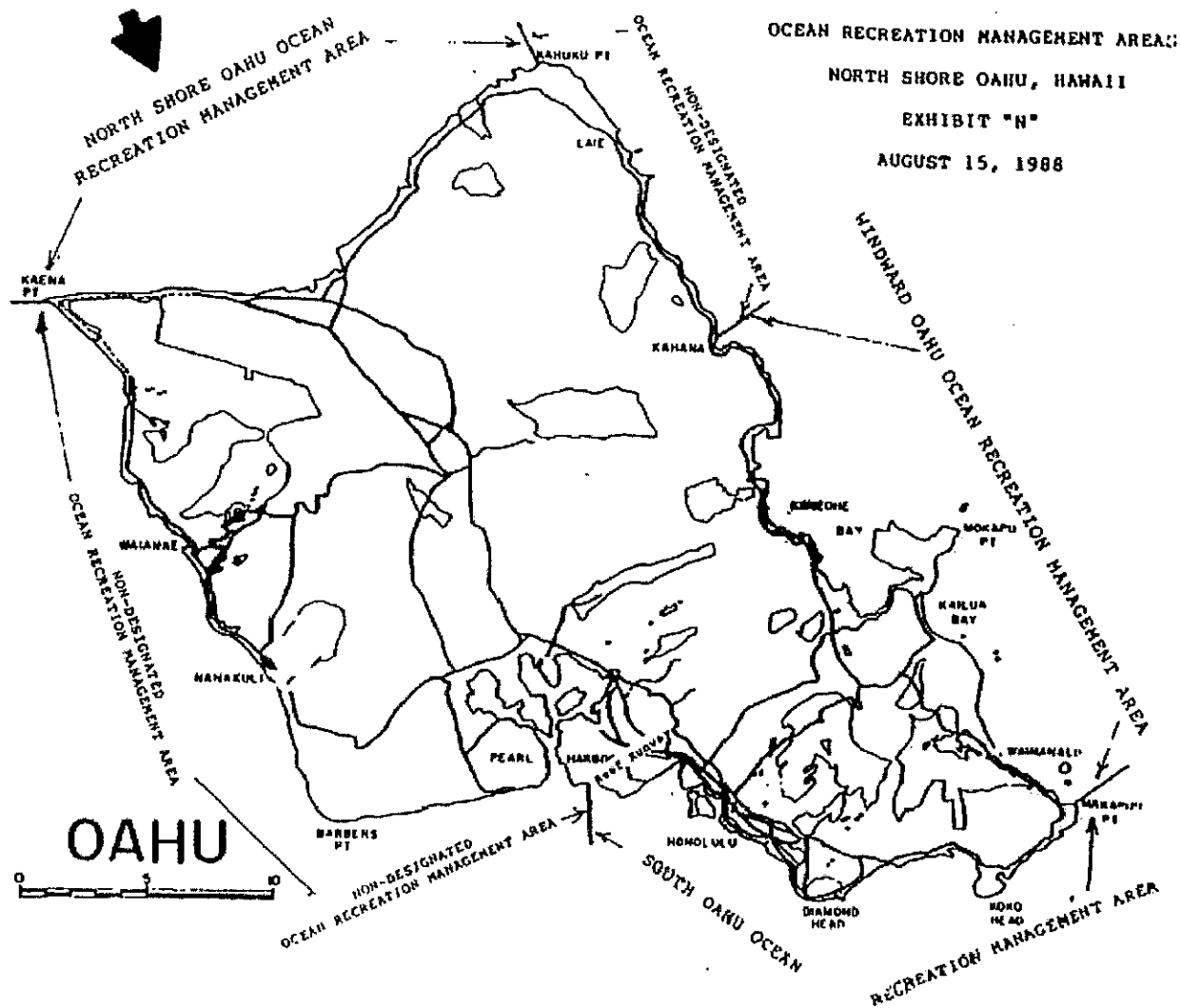
APPENDIX A – BEACH ASSESSMENT MATRIX FOR O’AHU

Department of Parks and Recreation, City and County of Honolulu

ISLAND OF O’AHU – CITY AND COUNTY OF HONOLULU

GENERAL INFORMATION		DEVELOPED ELEMENTS													NATURAL CONDITIONS				EXCEPTIONS									
POINTS	BEACH PARK NAME OR BEACH ACCESS NUMBER	PUBLIC ACCESS	ORMA DESIGNATION	NEIGHBORHOOD	EMERGENCY ASSISTANCE	PARKING	TOILET FACILITIES	SHOWERS	DRINKING FOUNTAIN	PICNIC AREA	COMMERCIAL ACTIVITIES	ACCESSIBLE RESOURCES	SECURED STORAGE	HEALTH APPARATUS	PERMITTED CAMPING	SPORT FIELD	COASTAL TRAIL	TERRAIN	GROUND SURFACE	EXPERIENCE	BEACH SAFETY	POSTED SIGNS	ENDANGERED SPECIES ACT	NATIONAL ENVIRONMENTAL POLICY ACT	NATIONAL HISTORIC PRESERVATION ACT	WILDERNESS ACT	OTHER	APPLICABILITY PORTION
36	Lanikai Neighborhood Park	2	1	2	0	3	2	1	1	2	0	0	0	2	0	2	0	3	3	3	3	0	1	1	1	1	1	1
26	Lanikai Beach Park ("Pounders")	2	1	0	0	3	0	1	0	1	0	0	0	0	0	0	0	3	3	3	3	0	1	1	1	1	1	1
13	Le'ahi Beach Park	2	1	2	0	0	0	0	0	0	0	0	0	0	0	0	1	1	2	1	2	1	0	0	0	0	0	0
36	Lanikai Beach Park	2	0	2	1	3	2	1	1	2	0	0	0	0	1	0	0	3	3	3	3	1	1	1	1	1	1	3
38	Kalihi Beach Park	2	0	2	2	3	2	1	1	2	0	0	0	0	0	0	0	3	3	3	3	1	1	1	1	1	1	3
35	Makaha Beach Park	2	0	2	2	3	2	1	0	2	0	0	0	0	0	0	0	3	3	3	3	1	1	1	1	1	1	3
4	Mokihala Beach Park	0	1	1	0	1	0	0	0	0	0	0	0	0	0	0	0	0	0	0	0	0	0	0	0	0	0	0
15	Makaha Beach Park	1	1	2	0	0	0	1	0	2	0	0	0	0	0	0	1	2	1	2	1	2	1	0	0	0	0	0
32	Makupu'u Beach Park	2	1	0	2	3	2	1	1	2	0	0	1	0	0	0	1	2	1	3	1	1	1	1	1	1	1	3
3	Makaha Beach	1	0	1	0	1	0	0	0	0	0	0	0	0	0	0	0	0	0	0	0	0	0	0	0	0	0	0
31	Mauna Lihohihi Beach Park	2	0	2	1	0	2	1	0	2	0	0	0	0	0	0	0	3	3	3	3	1	1	1	1	1	1	3
25	Maunaloa Bay Beach Park	2	1	1	0	3	2	2	1	2	0	0	0	0	0	0	0	2	2	3	3	1	0	0	0	0	0	0
35	Neal S. Blaisdell Park (Pearl Harbor Park)	2	0	2	0	3	2	0	1	3	0	0	0	2	0	1	2	3	3	2	0	1	1	1	1	1	1	3
27	One'ula Beach Park	1	0	2	0	3	2	1	0	2	0	0	0	1	0	1	0	3	3	3	3	2	1	0	0	0	0	2
36	Palaikoa Beach	2	0	2	0	3	2	1	1	2	0	0	0	0	0	0	0	3	3	3	3	1	1	1	1	1	1	3
28	Punaluu Beach Park	2	0	2	2	0	2	1	1	2	0	0	0	0	0	0	0	3	3	3	3	0	1	1	1	1	1	1
36	Pipikua Beach Park	2	1	2	2	2	1	1	1	2	0	0	0	2	0	2	0	3	3	3	3	0	1	1	1	1	1	1
15	Sandy Beach Park	2	1	1	2	2	1	1	1	2	1	0	0	0	0	0	1	0	0	0	0	0	0	0	0	0	0	0
24	Sunset Beach Neighborhood Park	2	1	2	0	2	2	1	0	0	0	0	0	2	0	2	0	3	3	3	3	0	0	0	0	0	0	0
9	Sunset Beach Park	2	1	2	2	2	0	0	0	0	0	0	0	0	0	0	0	0	0	0	0	0	0	0	0	0	0	0
10	Sunset Beach Support Park	0	0	0	0	0	0	0	0	0	0	0	0	0	0	0	0	0	0	0	0	0	0	0	0	0	0	0
15	Sunset Point Beach Park	1	1	2	0	0	0	0	0	0	0	0	0	0	0	0	0	3	3	3	3	1	0	0	0	0	0	0
35	Swaeney Beach Park	2	1	2	0	3	2	1	1	2	0	0	0	0	1	2	0	3	3	3	3	0	1	1	1	1	1	1
30	Tranekoa Beach Park ("Hawaiian Electric Beach")	2	0	2	2	1	2	1	0	1	0	0	0	0	0	0	0	2	2	3	3	1	1	1	1	1	1	3
32	Uehoua Beach Park	0	0	0	0	0	0	0	0	0	0	0	0	0	0	0	0	0	0	0	0	0	0	0	0	0	0	0
0	Uppers Surfing Support Park	1	1	2	0	0	0	0	0	0	0	0	0	0	0	0	0	3	3	3	3	0	0	0	0	0	0	0
22	Waialae Beach Park	1	1	2	0	0	0	0	0	0	0	0	0	0	0	0	0	0	0	0	0	0	0	0	0	0	0	0
27	Waialae Beach Park	1	1	2	0	3	2	1	1	2	0	0	0	0	0	0	1	3	3	3	3	1	1	1	1	1	1	1
6	Waialeale Beach Park	0	0	0	0	0	0	0	0	0	0	0	0	0	0	0	0	0	0	0	0	0	0	0	0	0	0	0
27	Waialeale Beach Park	2	1	2	0	3	2	1	1	2	0	0	0	0	0	0	0	3	3	3	3	1	0	0	0	0	0	0
13	Waianaloa Bay Beach Park	1	1	0	2	3	2	1	0	2	0	0	0	0	0	0	0	0	0	0	0	0	0	0	0	0	0	0
41	Waianaloa Beach Park	2	1	2	2	3	2	1	1	3	0	0	0	2	1	2	1	3	3	3	3	0	1	1	1	1	1	1
30	Waimea Bay Beach Park	2	1	0	2	3	2	1	1	2	0	0	0	0	0	0	0	3	3	3	3	0	1	1	1	1	1	1
25	West Loch Shoreline Park	1	0	2	0	3	2	0	1	2	0	0	0	0	0	1	2	4	2	2	0	0	0	0	0	0	0	2

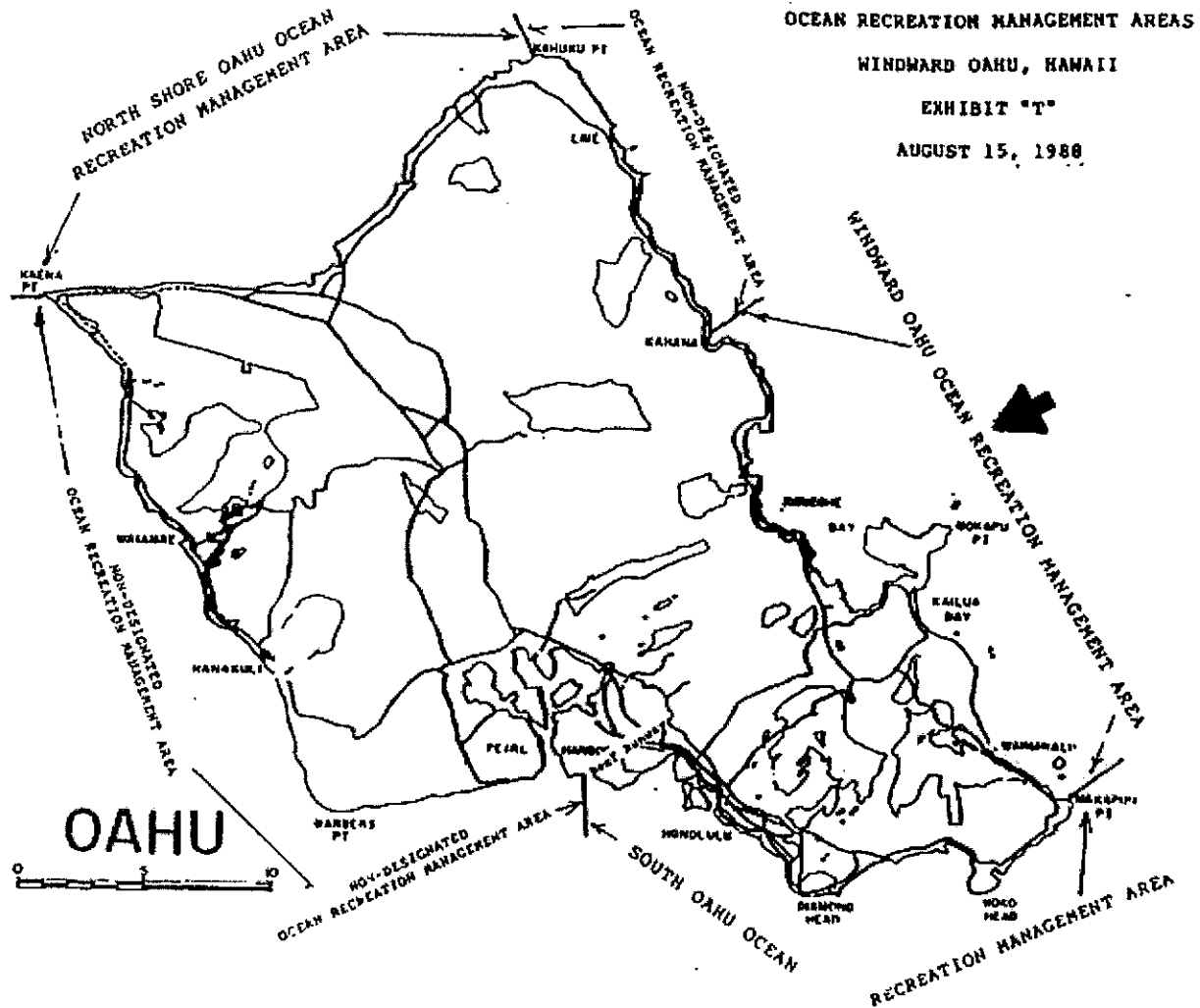
APPENDIX B – OCEAN RECREATION MANAGEMENT AREA (ORMA) FOR O’AHU



North Shore O’ahu
Ocean Recreation
Management Area
(ORMA)

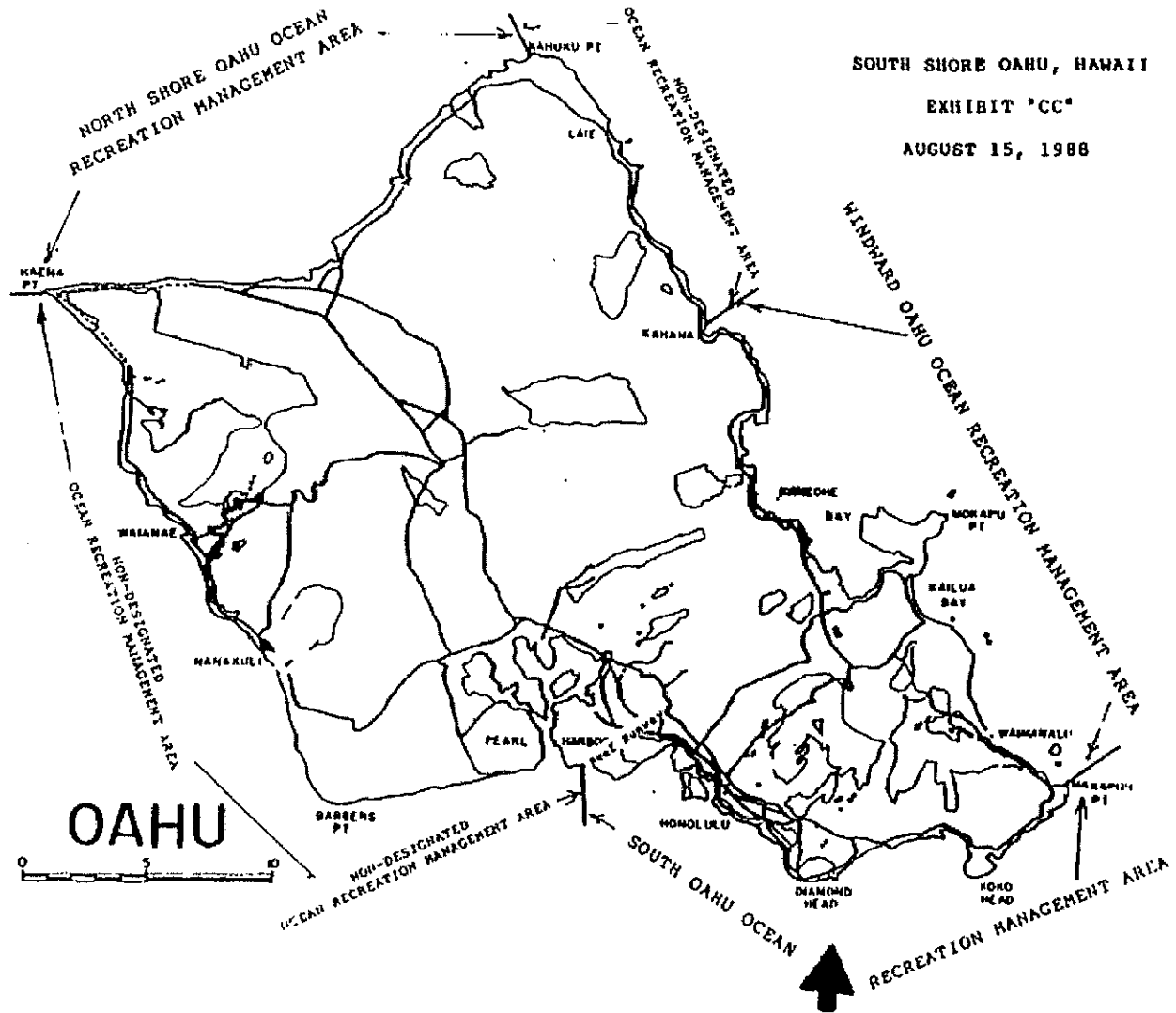
: Section 13-256-60, HAR
All ocean waters and navigable streams from Kaena Point to Kahuku Point, O’ahu, Hawai’i, extending three thousand feet seaward of the territorial sea baseline as shown on Exhibit “N,” dated August 15, 1988.

APPENDIX B – OCEAN RECREATION MANAGEMENT AREA (ORMA) FOR O’AHU



Windward O’ahu Ocean Recreation Management Area (ORMA) : Section 13-256-71, HAR
All ocean waters and navigable streams from northwest boundary of Kahana Bay to Makapuu Point, O’ahu, Hawai’i, extending three thousand feet seaward of the territorial sea baseline as shown on Exhibit "T," dated August 15, 1988.

APPENDIX B – OCEAN RECREATION MANAGEMENT AREA (ORMA) FOR O’AHU



South O’ahu Ocean Recreation Management Area (ORMA)

: Section 13-256-86, HAR
All ocean waters and navigable streams from Makapuu Point to the west boundary of the Honolulu International Airport Reef Runway, O’ahu, Hawai’i, extending three thousand feet seaward of the territorial sea baseline as shown on Exhibit "CC," dated August 15, 1988.

APPENDIX C – BEACH ACCESS EQUIPMENT



All-Terrain Wheelchair and Beach Access Mat locations

The Department of Parks and Recreation, City and County of Honolulu is committed to making all of its programs and leisure services accessible to everyone, including persons with disabilities. If you have need for reasonable modifications please call your local park or contact:

Therapeutic Recreation Unit
 1000 Uluohia St., Suite 309
 Kapolei, Hawaii 96707
 Phone: (808) 768-3027 V/T
 Fax: (808) 768-1917
 E-Mail: parks-tru@honolulu.gov

APPENDIX C – BEACH ACCESS EQUIPMENT

All-Terrain Wheelchair and Beach Access Mat locations

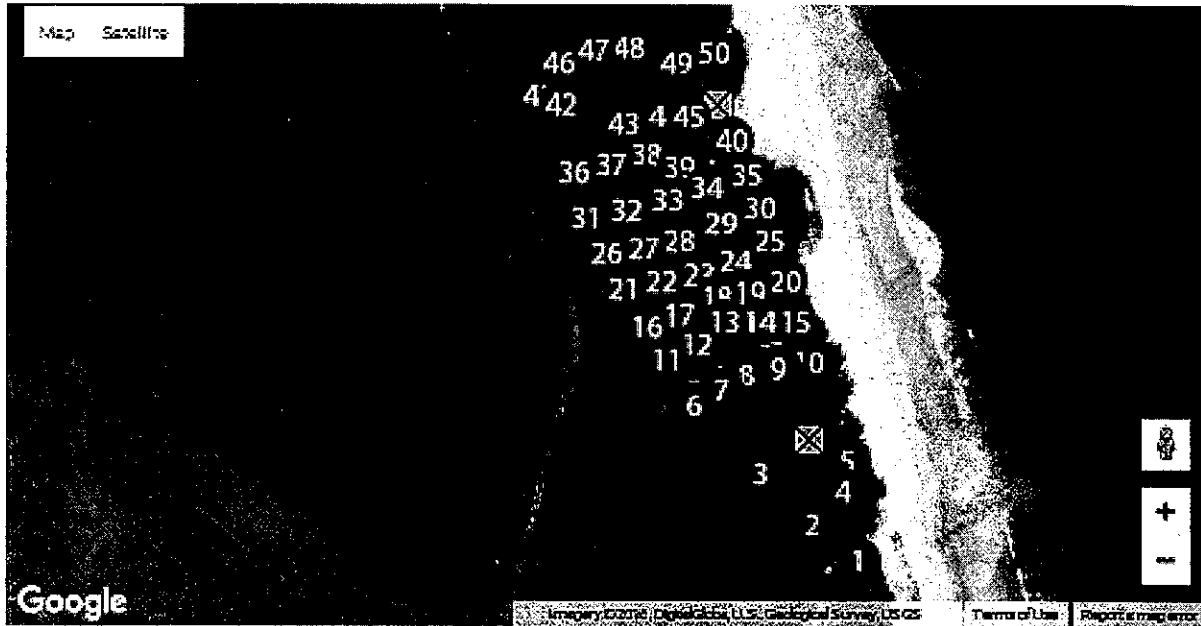
PARK	ADDRESS	ADDITIONAL INFORMATION
Ala Moana Beach Park	1201 Ala Moana Boulevard	<p>Call (808) 941-8882 to make All-Terrain Wheelchair reservations.</p> <p>All-Terrain Wheelchairs are located at the Diamond Head (east) and Ewa Beach (west) food concessionaires. Available for 2 hours on a first come first served basis.</p> <p>Hours open: 8:00 a.m. to 5:00 p.m. Subject to change.</p> <p>Beach access mats at both Diamond Head (east) and Ewa (west) ends of the beach in front of the concession stands.</p>
Fort DeRussy Beach Park	2055 Kalia Road	<p>All-Terrain Wheelchairs are available from the Koa Beach Services Kiosk.</p> <p>Hours open: 8:00 a.m. to 4:00 p.m. year around.</p> <p>Call for more information (808) 944-1962.</p>
Hanauama Bay Nature Preserve	7455 Kalanianaʻole Highway	<p>All-Terrain Wheelchairs are available from the Beach Information Kiosk.</p> <p>Available for 2 hours on a first come first served basis.</p> <p>Hours open: 8:00 a.m. to 4:00 p.m. year around.</p> <p>24-Hour Information Hotline call (808) 396-4229.</p>
Kailua Beach	526 Kawaihoa Road	<p>Call (808) 233-7300 at least one day in advance for All-Terrain Wheelchair reservations Monday to Thursday 9:00 a.m. to 3:00 p.m. and Friday 9:00 a.m. to 12:00 noon.</p> <p>Pick up must be made within 15 minutes of scheduled time.</p> <p>Beach access mats near the concessions stand and one leading to a viewing point from the Canoe Halau.</p>
Kualoa Regional Beach Park	49-479 Kamehameha Highway, Campsite A	<p>Call (808) 237-8525 at least one day in advance for All-Terrain Wheelchair reservations Monday – Thursday 9:00 a.m. – 3:00 p.m. and Friday 9:00 a.m. – 12:00 noon.</p> <p>Pick up must be made within 15 minutes of scheduled time.</p>
Pokai Bay (Pīlīlīlāu Army Recreation Center)	85-010 Army, Waianae	<p>Hours open: 8:00 a.m. to 4:00 p.m.</p> <p>Call (808) 696-4158 to make All-Terrain Wheelchair reservations.</p>
Sans Souci Beach at New Otani Kaimana Beach Hotel	2863 Kalakaua Avenue	<p>Hours open: 9:00 a.m. to 4:00 p.m.</p> <p>Call (808) 923-1555 to make All-Terrain Wheelchair reservations.</p>
Waimea Bay Beach Park	61-031 Kamehameha Highway	Beach Access Mats only available to a viewing point.
Waimanalo Bay Beach Park	41-043 Aloiloi Street	Beach Access Mats are available.
Waimanalo Beach Park	41-741 Kalanianaʻole Highway	Beach Access Mats are available.

Locations and opening hours are subject to change. For more information call (808) 768-3027 V/T Fax (808) 768-1917

APPENDIX C – BEACH PARK CAMPSITES

Department of Parks and Recreation, City and County of Honolulu

Bellows Field Beach Park



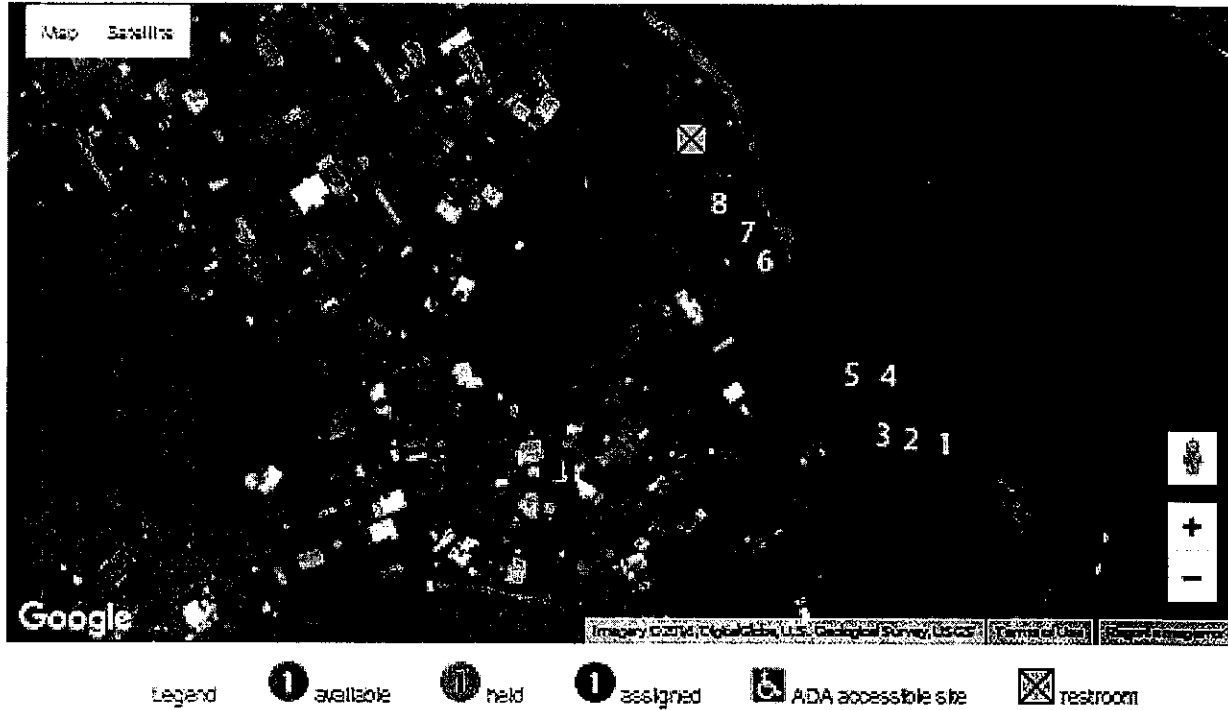
Legend 1 available 1 held 1 assigned ♿ ADA accessible site ☒ restroom

About	Facilities	Address
<p>Bellows Field Beach Park is located on a beautiful stretch of windward beach and holds fifty campsites. It is also a part of an active military training area. Campgrounds are not available before 12 noon on Friday. The park is closed between the hours of 8 p.m and 6 a.m. and no one is allowed to enter. Campers must remain in their designated camping area during those hours. A printed permit is required to camp in this park. All fees are non-refundable.</p>	<p>50 campsites total 2 Comfort Stations Outdoor Showers 2 Lifeguard Towers Limited parking</p>	<p>41-043 Kalaniana'ole Highway Waimanalo, Hawai'i 96795 Bus route 57/ 77/ 89</p>

APPENDIX C – BEACH PARK CAMPSITES

Department of Parks and Recreation, City and County of Honolulu

Hau'ula Beach Park



About	Facilities	Address
Small and rural, Hau'ula Beach Park is close to convenience shopping but far from the night life of Honolulu. A printed permit is required to camp in this park. All fees are non-refundable.	8 campsites total 1 Comfort Station/ Pavilion Outdoor Showers	54- 135 Kamehameha Highway Hau'ula, Hawaii 96717 Bus route 55/ 88a

APPENDIX C – BEACH PARK CAMPSITES

Department of Parks and Recreation, City and County of Honolulu

Kaiaka Beach Park



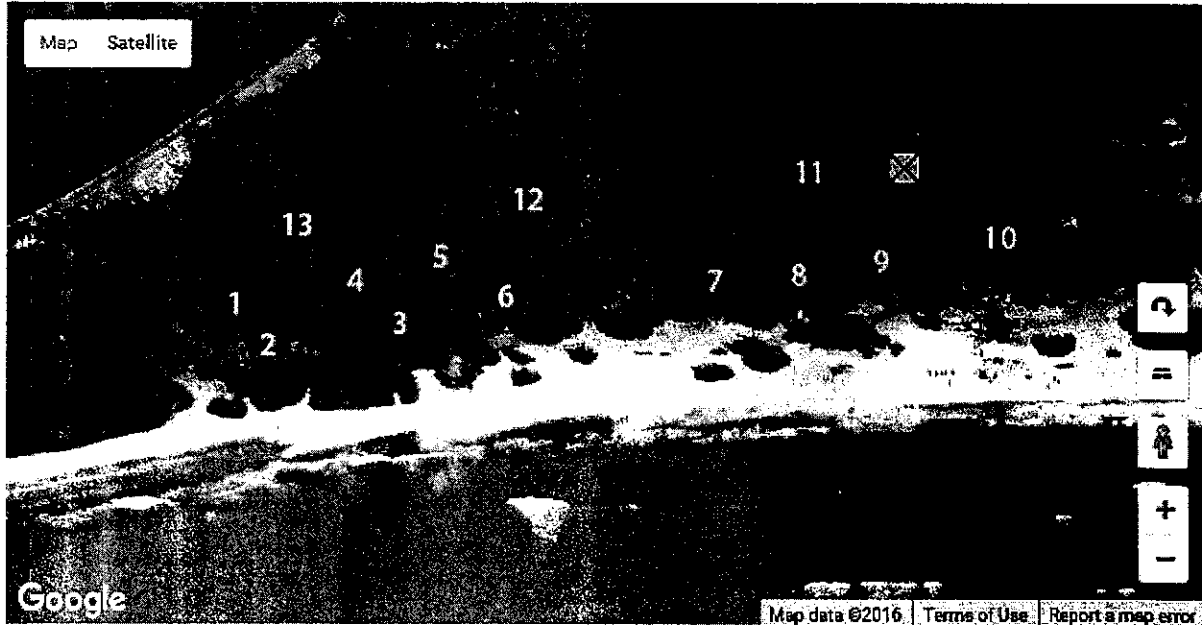
Legend ① available ② held ③ assigned ♿ ADA accessible site ☒ restroom

About	Facilities	Address
<p>Located at the mouth of the Waialua River, Kaiaka Beach Park features good surfing and fishing when in season. A printed permit is required to camp in this park. All fees are non-refundable. Gate closure hrs: 7p.m. to 7a.m.</p>	<p>7 campsites total 1 Comfort Station Outdoor Showers</p>	<p>**CLOSED - All camping at Kaiaka Bay Beach Park has been suspended due to a fire at the comfort station. Camping will resume when repairs are completed.**</p> <p>66-449 Hale'iwa Road Hale'iwa, Hawai'i 96712 Bus Route 76</p>

APPENDIX C – BEACH PARK CAMPSITES

Department of Parks and Recreation, City and County of Honolulu

Kalaeloa Beach Park



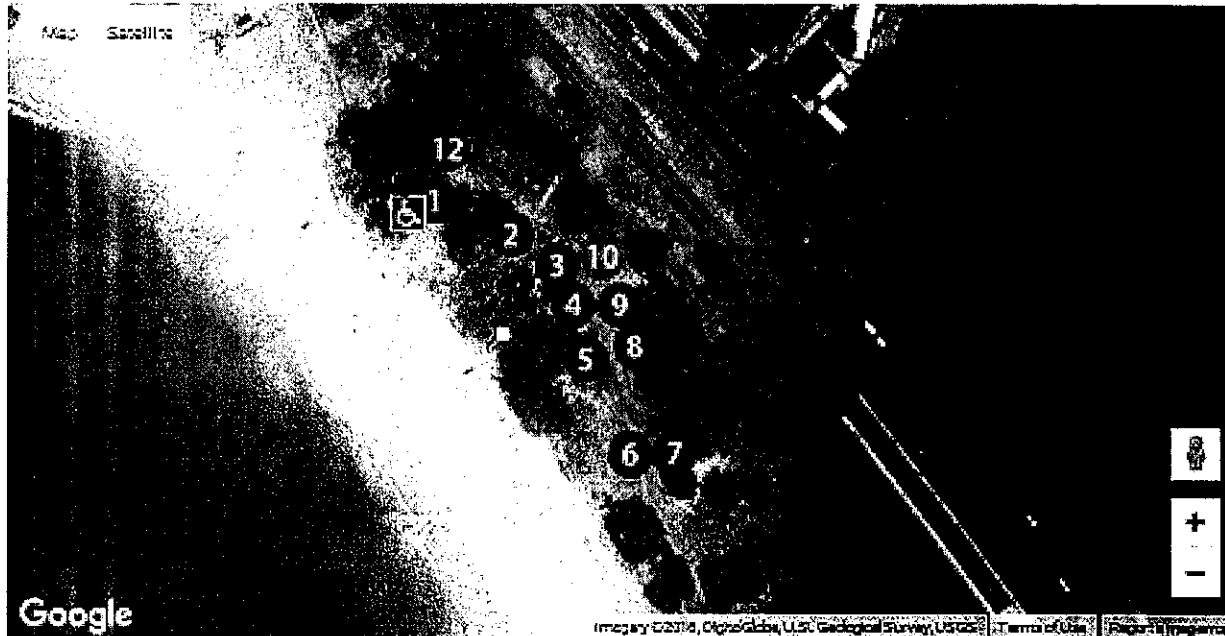
Legend ① available ① held ① assigned ♿ ADA accessible site ☒ restroom

About	Facilities	Address
A beautiful beach that features good surfing and very good fishing, camping at Kalaeloa Beach Park can seem quiet and very remote. A printed permit is required to camp in this park. All fees are non-refundable	13 campsites total 1 Comfort Station Outdoor Showers	***Note: The Comfort Station will remain closed until further notice, portable toilets will be available and the outdoor showers will be operational.**

APPENDIX C – BEACH PARK CAMPSITES

Department of Parks and Recreation, City and County of Honolulu

Kalaniana'ole Beach Park



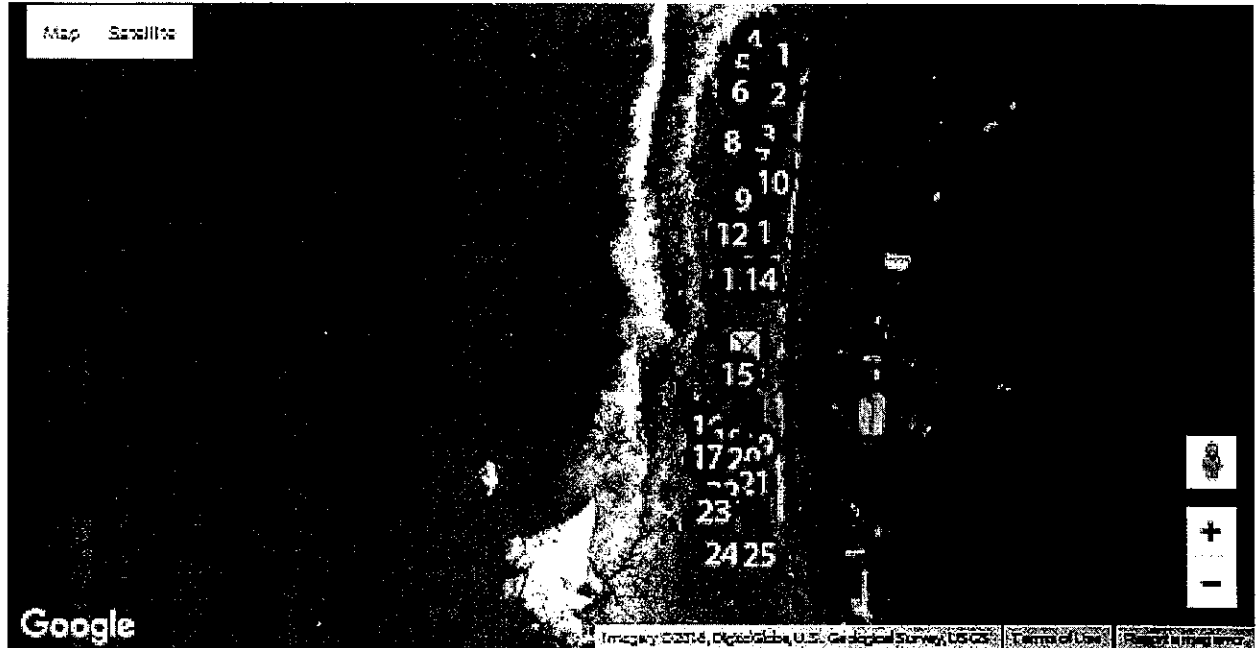
Legend 1 available 11 field 1 assigned ADA accessible site X restroom

About	Facilities	Address
<p>Kalaniana'ole Beach Park sports a spectacular beach that supports excellent fishing and challenging swimming conditions. Canoe clubs often throng the beach for both practice and competition attracting many local faces. A printed permit is required to camp in this park. All fees are non-refundable.</p> <p>NOTICE: Nanakuli Beach Park was officially renamed Kalaniana'ole Beach Park.</p>	<p>11 campsites total 1 ADA accessible campsite(s) 1 Comfort Station Outdoor Showers</p>	<p>89-269 Farrington Highway Wai'anae, Hawai'i 96792 Bus route 40/ 40a/ 93</p>

APPENDIX C – BEACH PARK CAMPSITES

Department of Parks and Recreation, City and County of Honolulu

Kea'au Beach Park



Legend available held assigned ADA accessible site restroom

About	Facilities	Address
Beautiful ocean for the experienced only, please. A printed permit is required to camp in this park. All fees are non-refundable.	25 campsites total 1 ADA accessible campsite(s) 2 Comfort Stations Outdoor Showers	83-431 Farrington Highway Wai'anae, Hawai'i 96792 Bus route 40/ 93 then 1 mile to park.

APPENDIX C – BEACH PARK CAMPSITES

Department of Parks and Recreation, City and County of Honolulu

Kokololio Beach Park



Legend available held assigned ADA accessible site restroom

About	Facilities	Address
Always in high demand, Kokololio Beach Park is a beautiful park with a beautiful beach but surf and currents can demand the swimmers attention. A printed permit is required to camp in this park. All fees are non-refundable. Gate closure hrs: 7p.m. to 7a.m.	5 campsites total 1 Comfort Stations Outdoor Showers	55-017 Kamehameha Highway La'ie, Hawai'i 96762 Bus route 55/ 88a

APPENDIX C – BEACH PARK CAMPSITES

Department of Parks and Recreation, City and County of Honolulu

Kualoa A Regional Park



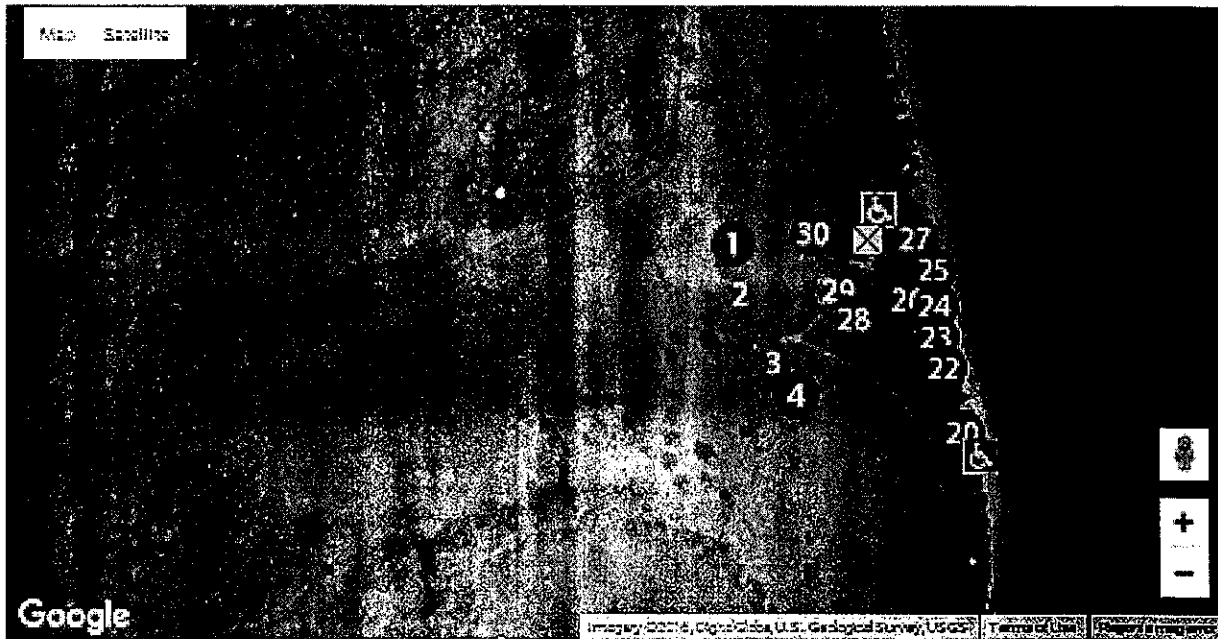
Legend 1 available 1 held 1 assigned ♿ ADA accessible site ☒ restroom

About	Facilities	Address
<p>A hidden gem, Kualoa "A" Beach Park is closed during the summer for dedicated parks programs. A printed permit is required to camp in this park. All fees are non-refundable. Gate closure hrs: 8p.m. to 7a.m. The park closes for the summer after the Memorial Day weekend and reopens for the Labor Day weekend.</p>	<p>7 campsites total 1 ADA accessible campsite(s) 1 Comfort Station Outdoor Showers</p>	<p>49-479 Kamehameha Highway Kane'ohe, Hawai'i 96744 Bus route 55</p>

APPENDIX C – BEACH PARK CAMPSITES

Department of Parks and Recreation, City and County of Honolulu

Kualoa B Regional Park



Legend 1 available 2 field 3 assigned 4 ADA accessible site 5 restroom

About	Facilities	Address
<p>Facing Mokoli'i (Chinaman's Hat) Kualoa "B" Beach Park is adjacent to ancient Hawaiian fishponds. Fishing here can be quite good. A printed permit is required to camp in this park. All fees are non-refundable.</p>	<p>14 campsites total 2 ADA accessible campsite(s) 1 Comfort Station Outdoor Showers</p>	<p>49-479 Kamehameha Highway Kane'ohe, Hawaii 96744 Bus route 55</p>

APPENDIX C – BEACH PARK CAMPSITES

Department of Parks and Recreation, City and County of Honolulu

Lualualei Beach Park



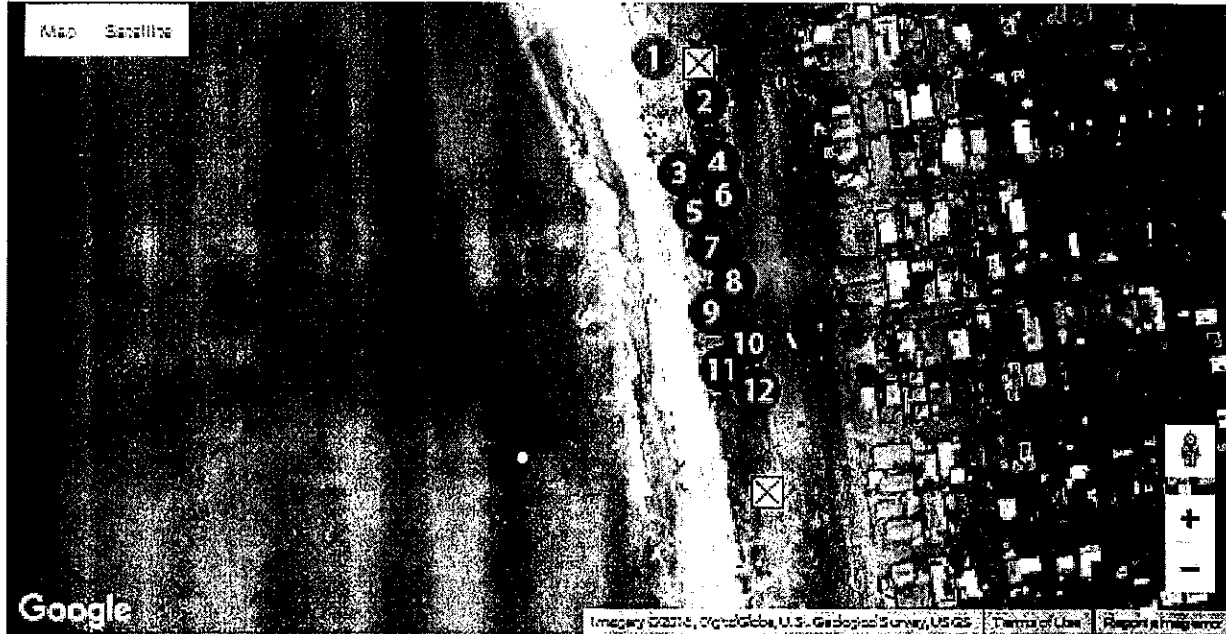
Legend ① available ① held ① assigned ♿ ADA accessible site X restroom

About	Facilities	Address
Lualualei Beach Park is now open year round for camping. A printed permit is required to camp in this park. Only one vehicle permit is issued per permit at this campground. All fees are non-refundable.	6 campsites total 1 Comfort Station Outdoor Showers	86-221 Farrington Highway Wai'anae, Hawai'i 96792 Bus route 40/ 40a/ 93

APPENDIX C – BEACH PARK CAMPSITES

Department of Parks and Recreation, City and County of Honolulu

Mali Beach Park



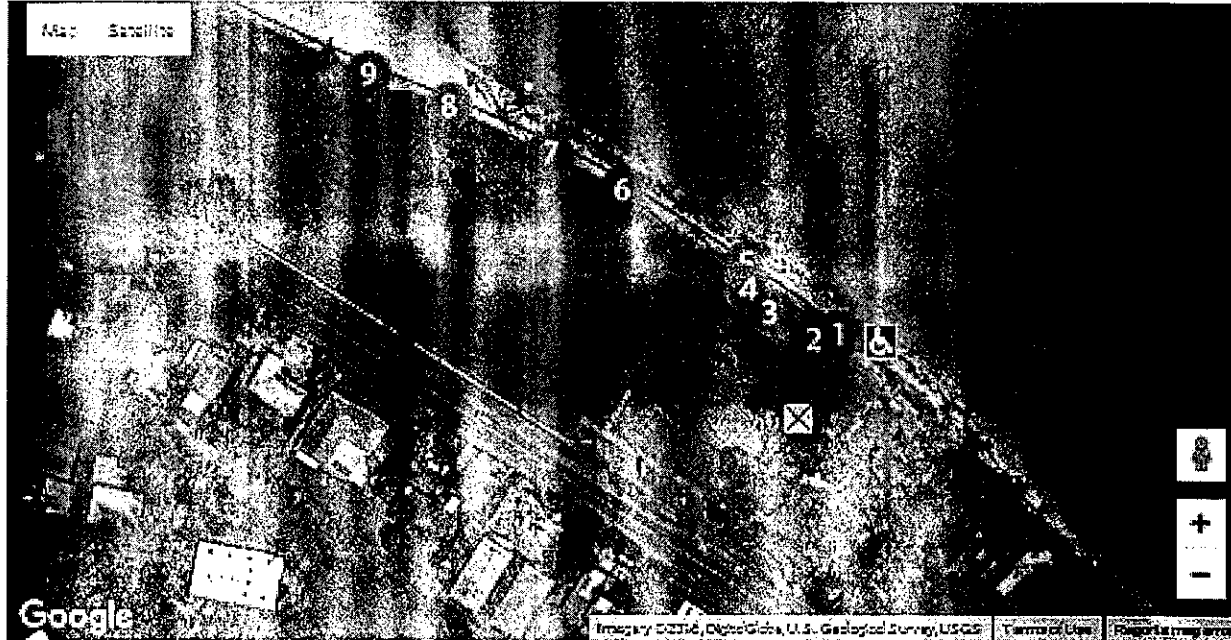
Legend ① available ① held ① assigned ♿ ADA accessible site ☒ restroom

About	Facilities	Address
Comfortably adjacent to an historic community, Ma'ili Beach Park is very popular with local residents particularly during the summer. A printed permit is required to camp in this park. All fees are non-refundable.	12 campsites total 2 Comfort Stations Outdoor Showers	87-021 Farrington Highway Wai'anae, Hawai'i 96792 Bus route 40/ 40a/ 93

APPENDIX C – BEACH PARK CAMPSITES

Department of Parks and Recreation, City and County of Honolulu

Swanzy Beach Park



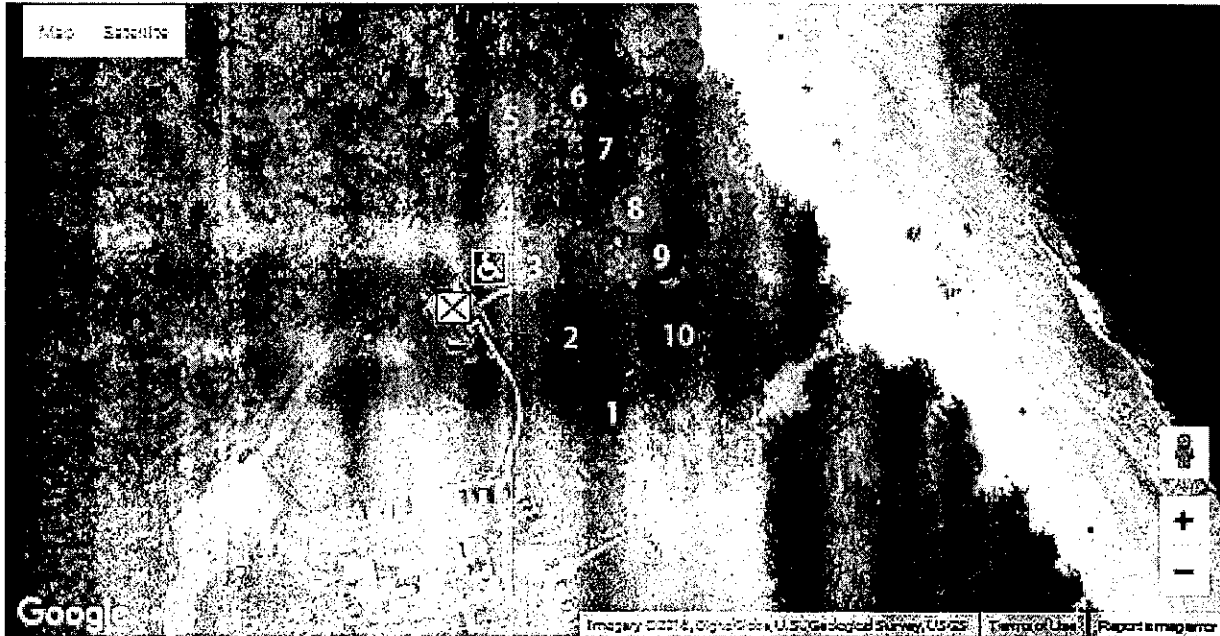
Legend available held assigned ADA accessible site restroom

About	Facilities	Address
Some fishing, a little swimming, and close to convenience shopping, Swanzy Beach Park is only open to camping from Friday to Monday. A printed permit is required to camp in this park. All fees are non-refundable.	9 campsites total 1 ADA accessible campsite(s) 1 Comfort Station Outdoor Showers	51-369 Kamehameha Highway Ka'a'awa, Hawai'i 96730 Bus route 55/ 88a

APPENDIX C – BEACH PARK CAMPSITES

Department of Parks and Recreation, City and County of Honolulu

Waimanalo Bay Beach Park



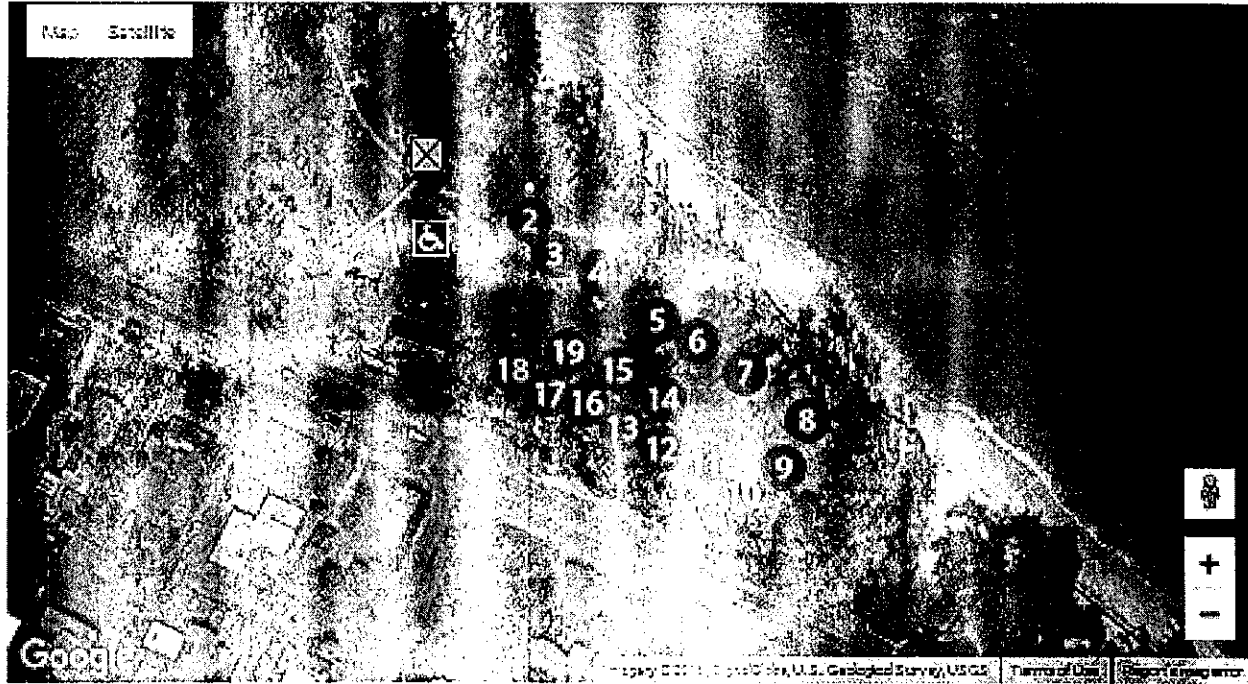
Legend available held assigned ADA accessible site restroom

About	Facilities	Address
Waimanalo Bay Beach Park shares the same beach with Bellows Field Beach Park with gates open from 6:00 a.m. to 7:45 p.m. A printed permit is required to camp in this park. All fees are non-refundable.	10 campsites total 1 ADA accessible campsite(s) 1 Comfort Station Outdoor Showers	41-043 Aloiloi Street Waimanalo, Hawai'i 96795 Bus route 57/ 77/ 89

APPENDIX C – BEACH PARK CAMPSITES

Department of Parks and Recreation, City and County of Honolulu

Waimanalo Beach Park



Legend ① available ① held ① assigned ♿ ADA accessible site 🚻 restroom

About	Facilities	Address
Waimanalo Beach Park plays a wide and varied role in a large and active native community. A printed permit is required to camp in this park. All fees are non-refundable.	19 campsites total 1 ADA accessible campsite(s) 1 Comfort Station Outdoor Showers	41-741 Kalaniana'ole Highway Waimanalo, Hawai'i 96795 Bus route 57/ 77/ 89

REFERENCES

- City and County of Honolulu, Department of Parks and Recreation. Index of O'ahu Parks and Facilities. April 1997.
- City and County of Honolulu, Department of Parks and Recreation. Islandwide Parks Master Plan. (DRAFT). March 2002.
- City and County of Honolulu, Department of Parks and Recreation. Retrieved from:
<http://www.honolulu.gov/parks/default.html> (2016, October 31);
<http://www.honolulu.gov/parks/camping.html> (2016, September 15);
<http://www.honolulu.gov/parks/dprtru.html> (2016, May 2);
<http://www.honolulu.gov/parks/dprbeachaccess.html> (2016, September 15)
- City and County of Honolulu, Department of Planning and Permitting - Honolulu Land Information System (HoLIS), Interactive GIS Web Map and Data Services. **Park Info Report Generator**. Retrieved from: <http://gis.hicentral.com/> (2016, October 31)
- State of Hawai'i, Department of Land and Natural Resources. Hawaii Administrative Rules, Title 12 (Unofficial Compilation). Retrieved from:
<http://files.hawaii.gov/dlnr/dobor/rules/compiled/HAR256-Compiled.pdf>
- State of Hawai'i, Department of Land and Natural Resources. Improve Public Beach Access for Persons with Disabilities in Hawai'i. (DRAFT) October 2016.

ACKNOWLEDGEMENT

The Department would like to thank the following organizations and individuals for their time, comments, and participation:

Department of Health
Disability and Communications Access Board

Department of Land and Natural Resources
Land Division

County of Kaua'i
Department of Parks and Recreation

County of Maui
Department of Parks and Recreation

County of Hawai'i
Department of Parks and Recreation