

DAVID Y. IGE  
GOVERNOR



**DEPT. COMM. NO. 291**

RODERICK K. BECKER  
Comptroller

AUDREY HIDANO  
Deputy Comptroller

**STATE OF HAWAII**  
**DEPARTMENT OF ACCOUNTING AND GENERAL SERVICES**

P.O. BOX 119, HONOLULU, HAWAII 96810-0119

January 25, 2017

The Honorable Ronald D. Kouchi,  
President and Members of the Senate  
Twenty-Ninth State Legislature  
State Capitol, Room 409  
Honolulu, Hawaii 96813

The Honorable Joseph M. Souki, Speaker  
and Members of the House of  
Representatives  
Twenty-Ninth State Legislature  
State Capitol, Room 431  
Honolulu, Hawaii 96813

Dear President Kouchi, Speaker Souki, and Members of the Legislature:

For your information and consideration, I am transmitting a copy of the Hawaii State Foundation on Culture and the Arts Annual Report for Fiscal Year 2015 – 2016 pursuant to Chapter 9-3(8), Hawaii Revised Statutes. In accordance with Section 93-16, Hawaii Revised Statutes, I am also informing you that the report may be viewed electronically at <http://ags.hawaii.gov/reports/legislative-reports/>.

Sincerely,

RODERICK K. BECKER  
Comptroller

Enclosure



HAWAII STATE FOUNDATION ON CULTURE AND THE ARTS



ANNUAL REPORT FY 2015-2016





**HAWAI'I**  
STATE FOUNDATION on  
CULTURE and the ARTS  
CELEBRATING **50** YEARS

## SFCA ANNUAL REPORT FY 2015-2016

2	Executive Summary
3	Art in Public Places Program
7	Hawai'i State Art Museum
9	Biennium Grants Program
13	Designated Programs
22	ARTS FIRST Partners Strategic Plan
27	Financial Summary
	Commissioners and Staff

COVER: Detail of Rocky Point 5 by Pete Shepard Cole, oil on canvas. Photo: Paul T. Hayashi

LEFT: ILLUMINATIO MUNDI NATURALIS (THE BRILLIANCE OF THE NATURAL WORLD) by Karen Lucas, cast concrete and glass mosaic at Ewa Makai Middle School. Photo: Karen Lucas



# EXECUTIVE SUMMARY



Patricia Hamamoto

On July 12, 1965, Governor John A. Burns signed Act 269 establishing the State Foundation on Culture and the Arts (SFCA) as the official state arts agency of Hawai'i. Throughout fiscal year 2015-2016, our agency celebrated the 50th anniversary of that signing with a series of free public events, talks, and exhibition openings.

Along with honoring our past, the SFCA is now charging into the future with enhanced outreach efforts and a new strategic planning effort.

On August 8th, 2015 we commemorated the 50th anniversary year with a full day of pottery, puppetry, kapa and weaving demonstrations, along with an exciting line-up of dancers, drummers, and other musicians. The Hawai'i State Art Museum campus was buzzing all day with visitors of all different ages and interests.

The Hawai'i State Art Museum (HiSAM) has continued to grow into its potential as "The Peoples Museum" through a wide range of programming, exhibitions, and rentals. The venue is constantly engaging new audiences, with a record 52,025 visitors in attendance this fiscal year. We also expanded the Art Bento museum education program to include students from three Turnaround Arts schools, and welcomed a new restaurant called Artizen by MW, which is led by renowned chef-owners Michelle Karr Ueoka and Wade Ueoka.

The SFCA was fortunate this fiscal year to host the Chairman of the National Endowment for the Arts (NEA), Jane Chu. Chairman Chu traveled throughout the state and made various site visits to those who were influenced by the NEA, which was also celebrating its 50th year anniversary.

At the 2016 Annual Art at the Capitol event, which showcases the artworks on display in state legislators' offices, Hawai'i state senators and representatives embraced their own creativity by participating in an afternoon art lesson at HiSAM led by local artist Regina Bode. The impressive results of their efforts were put on display throughout the event. This year, SFCA is excited to engage our legislators with even more opportunities to explore their artistic talents.

During the 2017 Legislative Session, we are requesting that the Governor and the 2017 Legislature approve an additional staff position within the Art in Public Places program so that

more opportunities for public programming can be made possible. At the heart of this request is our goal to increase access for our neighbor island communities.

Through our partnership with the Hawai'i Arts Alliance, the Maui Arts and Cultural Center, and the Hawai'i Department of Education, we continue to provide professional development for teachers to learn how to incorporate the arts into the core curriculum. We also support the Teaching Artist Institute, which offers professional development opportunities for SFCA's Artists in the Schools roster of teaching artists. All this translates into more engaging and meaningful learning for our public school students.

In the coming months, we look forward to launching our next strategic planning effort, through which we are casting our net into the future in order to develop programs and services that meet the needs of our communities, as well as to discover more effective ways to increase public participation in the arts. By thinking and acting strategically, we aim to position our agency to take full advantage of opportunities as they arise. We will be revisiting our core values and setting a vision for our future and the role the arts will play in our state.

As the state arts agency, we continue to invest in our core programs, including public-private partnerships in our the Artists In the Schools program, the revitalization of arts in our rural and underserved communities, and continuing support of arts and culture organizations through our Biennium Grants program. We welcome and encourage you to explore more of Hawaii's amazing communities, organizations, and artists that are featured throughout this report.



Jonathan Johnson

Patricia Hamamoto, Chairperson

Jonathan Johnson, Executive Director

# ART IN PUBLIC PLACES PROGRAM



Ka Makani Lehua (The Wind of the Lehua Blossoms) by Patrick Ching, mosaic sculpture at Lehua Elementary School. Photo: Studio3FX

The Hawai'i State Foundation on Culture and the Arts was established by the Hawai'i State Legislature in 1965 as the official arts agency of the State of Hawai'i. The concept of setting aside one percent of construction appropriations to provide a funding base for the acquisition of works of art set a national standard in 1967 when Hawai'i became the first state in the nation to pass such legislation. The 1989 revision of the law created the Works of Art Special Fund, a non-lapsing account into which all funds set aside for works of art are deposited and from which expenditures for purposes consistent with Section 103-8.5, Hawai'i Revised Statutes, are made.

The objectives of the Art in Public Places Program are to enhance the environmental quality of public buildings and spaces throughout the state for the enjoyment and enrichment of the public; to cultivate the public's awareness of visual arts in all media, styles, and techniques; to contribute to the development and recognition of a professional artistic community; and to acquire, interpret, preserve, and display works of art expressive of the Hawaiian islands, the multi-cultural heritages of its people, and the creative interests of its artists.

The Art in Public Places Program acquires completed, portable works of art, and commissions artists to create works of art for specific locations. Works of art are commissioned on the recommendations of Art Advisory Committees which are appointed by the SFCA Commission to assist with the selection of a location, define the medium and theme of the work or art, recommend an artist, and review design proposals. Typically, the Art Advisory Committee is chaired by a building's chief administrator and includes representatives from the staff, user groups, and community. The Commission

also appoints one of its commissioners, staff representative of appropriate State departments, and technical and artistic consultants as necessary. Management of the project is coordinated by the Art in Public Places Program staff.



'AALI'I KU MAKANI ('Aali'i Standing in the Wind) by Randall Shiroma, terrazzo at Ka'u High School. Photo: State Foundation on Culture and the Arts



## Commissioned Works of Art

Artist	Title	Medium	Site	Price
Ching, Patrick	<i>Ka Makani Lehua (The Wind of the Lehua Blossoms)</i>	ceramic and glass mosaic mural	Lehua Elementary School	\$100,000.00
Kaneko, Jun	<i>Untitled Head (I)</i>	white glazed ceramic sculpture	No. 1 Capitol District Building	\$125,000.00
Lucas, Karen	<i>ILLUMINATIO MUNDI NATURALIS (THE BRILLIANCE OF THE NATURAL WORLD)</i>	cast concrete and glass mosaic	Ewa Makai Middle School	\$100,000.00
Salenger, Matthew	<i>Culmination</i>	stainless steel	Kalama Intermediate School	\$100,000.00
Shiroma, Randall	<i>‘A‘ALI‘I KU MAKANI (‘A‘ali‘i Standing in the Wind)</i>	terrazzo	Ka‘u High School	\$100,000.00
<b>Number of Artworks: 5</b>			<b>Total:</b>	<b>\$525,000.00</b>

The Art in Public Places—Artists in Residence Program (APP-AIR) is collaborative program between the Department of Education and the State Foundation on Culture and the Arts. The program was established in 1996 to implement an integrated visual arts in education program while providing commissioned works of art in public schools. The school APP-AIR project committee is guided by the SFCA through the process of selecting an appropriate site and style of artwork for their school campus. Applicants appropriate to

the project are recommended from an open call for artists. The school work collaboratively with the selected artist on the concept of the artwork for their campus. The APP-AIR program includes an educational component designed to include student and teacher participation in the conceptualization, design, construction, and installation of the commissioned work of art. The final artwork reflects and is appropriate to the school's environment, curriculum, cultural values, and aesthetics.

## Relocatable Works of Art Acquisitions

Artist	Title	Medium	Price
Arkin, Gwen	<i>Kauhale</i>	collagraph print	\$130.21
Arthur, Jody	<i>Ritual Navigation I</i>	polymer plate print	\$416.67
Asato, Evan M.	<i>A Homage to the Universe</i>	digital archival print	\$888.25
Becket, Jan	<i>Wa‘ahila, 2002</i>	photograph	\$125.00
	<i>Wa‘ahila, 2010</i>	photograph	\$125.00
Bencomo, Derek	<i>Come to Me Dancing IV</i>	manzanita burl	\$3,344.00
Beste, Alison	<i>Oil Tanker Sunset #137</i>	archival inkjet print	\$942.41
	<i>Oil Tanker Sunset #4</i>	archival inkjet print	\$942.40
Bisgard, Judy D.	<i>Rockwall II</i>	collage monoprint	\$989.58
	<i>Ulupalakua</i>	oil on canvas	\$1,881.00
Bishop Sr., William R.	<i>Reflections</i>	welded steel	\$5,208.30
Calhoun, Tom	<i>Series Nexus 10</i>	Cook Island pine	\$14,583.34
Clemente, Francisco	<i>A Tale of Pupukeya</i>	loquat wood	\$3,350.78
	<i>untitled</i>	cedar wood	\$628.27
Cole, Pete Shepard	<i>Peter Cole in the Board Room</i>	oil on canvas	\$8,333.36
	<i>Rocky Point 4</i>	oil on canvas	\$3,141.36
	<i>Rocky Point 5</i>	oil on canvas	\$3,141.36
Conbere, Nicholas	<i>Bonneville #2</i>	chine colle	\$650.00
Day, Hannah	<i>I would walk to the end of the earth just to set you free, from the misery you make</i>	etching on paper	\$675.00
Dein, Quincy	<i>Waikamoi Mist</i>	photography	\$3,645.83
Dudley, Tracy	<i>‘Alala</i>	acrylic on wood panel	\$1,145.83
Edwards, Christopher	<i>The Urchin</i>	raku ceramic	\$1,256.54



*Untitled* by Francisco Clemente, cedar wood. Photo: Paul T. Hayashi



*View From Footprints Trail* by Mary Goodrich, black and white photograph. Photo: Paul T. Hayashi

(Relocatable Works of Art Acquisitions continued from page 4)

Artist	Title	Medium	Price
Evans, Brady	<i>The Dragon Tamer's Pick-up Sticks</i>	pen and ink, graphite, color pencil on paper	\$1,300.00
Fitzel, Scott	<i>Evolution- 7'0 Lei O Mano</i>	hand shaped surfboard: foam, fiber glass, resin and fins	\$3,800.00
Fitzhugh, Terese	<i>Kahala</i>	watercolor	\$677.08
Freeland, Betty Hay	<i>Ho‘omalumalu O Waikamoi, Drifting Clouds of Waikamoi</i>	oil on canvas	\$1,927.08
French, Sally	<i>Word Up</i>	oil, alkyd, prismacolor, acrylic, pastel	\$8,332.80
Gardner, Judy	<i>Ghosts and Shadows</i>	monotype, colored pencil	\$600.00
Gonzales, Jose	<i>Today the West, Tomorrow the World</i>	screenprint	\$250.00
Goodrich, Mary	<i>Confluence of Elements</i>	photograph	\$729.16
	<i>View From Footprints Trail</i>	black and white photograph	\$723.95
Ihl, Claudia	<i>Alaka‘i Forest Ferns, Kauai</i>	watercolor	\$837.70
Jacobson, Kate	<i>Conservation Conservation</i>	raku ceramic	\$1,562.49
	<i>Crow's Eye View</i>	raku ceramic	\$833.33
Jeon, Diana Nicholette	<i>They Don't Always Show on the Outside 5</i>	manipulated iPhonography, pigment print	\$800.00
	<i>Yellow</i>	manipulated iPhonography, pigment print	\$800.00
Johnston-Schuster, Ann	<i>Shadow of the Training</i>	subtractive woodcut	\$700.00
Laury, Chenta	<i>Coral #1</i>	wool	\$1,800.00
	<i>Coral #2</i>	wool	\$1,800.00
	<i>Coral #3</i>	wool	\$1,800.00
	<i>Coral #7</i>	wool	\$1,800.00
Lieber, Tom	<i>Small Black Top Hat</i>	oil on canvas	\$5,200.00
Matsuda, Mari	<i>Don Matsuda, Veteran for Peace, Protest at the Japan Consulate, Honolulu, for Henoko</i>	woodcut	\$1,000.00
McCaskill, John	<i>The Mill</i>	woodcut	\$975.00
McDonald, Licia	<i>Generations</i>	porcelain/ glaze	\$3,749.76
McIlroy, Emily	<i>Memory: Compost</i>	charcoal, pastel, and oil on paper	\$3,500.00



(Continued from page 5)



The Urchin by Chris Edwards, raku ceramic. Photo: Paul T. Hayashi



The Mill by John McCaskill, woodcut. Photo: Paul T. Hayashi

(Relocatable Works of Art Acquisitions continued from page 4)

Artist	Title	Medium	Price
Meekhof, Jim	<i>Amber Translucence</i>	turned wood vessel	\$4,687.50
Messier, Wendy Kim	<i>Composition B</i>	fiber, textile inks	\$3,000.00
Meyer, Meleanna Aluli	<i>Hali'a Ke Ala (Fond Remembrance)</i>	monoprint/ collage	\$3,800.00
Miller, Elizabeth	<i>Precious Are the Precious Few</i>	aluminum repousse, india ink, mixed media	\$2,083.32
Miyamoto, Shigeru	<i>China Syndrome</i>	ceramic	\$471.21
Moore, Alexia	<i>I ka wa mua ka wa ma hope</i>	woodblock print with screenprint	\$400.00
Morinoue, Miho	<i>In the Shadows of Young Girls with Flowers</i>	drypoint etching on paper	\$375.00
Mydock, John	<i>Vanessa Tameamea</i>	pyrograph on Norfolk pine platter	\$2,400.00
Nakoa, Elizabeth	<i>Kipuka</i>	relief linoleum print	\$225.00
Nam, Joseph	<i>Hollow Drop (Redux)</i>	woodcut	\$580.00
Nativio, Betty Jean	<i>Sounds From the Conch</i>	oil on canvas	\$3,124.80
Nelson, Judith	<i>Schist</i>	monoprint assemblage	\$2,300.00
Ordorica, Eric	<i>Finding and Accepting</i>	inkjet and pigment on bartya paper	\$250.00
Orme, Harinani	<i>Kane</i>	acrylic on wood panel	\$1,200.00
	<i>Wahine Laka</i>	acrylic on wood panel	\$1,200.00
Orwig, Darrell	<i>It Felt Good To Be Somewhere Safe</i>	oil on canvas	\$3,125.00
	<i>I've Been Down This Road Before, I Hope the Mist Will Clear</i>	oil on canvas	\$6,250.00
Pao, Carl Franklin Ka'aila'au	<i>Ki'i Kupuna: Makawalu</i>	acrylic, paper, and shellac on MDF board	\$3,200.00
Pezzillo, Zach	<i>Kaupo Ridge</i>	photography	\$989.58
Sakae, Yuriko Bobbie	<i>Midnight in Moab</i>	monoprint	\$1,200.00
Sheehan, Annamarie	<i>Ascension</i>	acrylic on clayboard	\$2,916.67
Shields, Margaret	<i>'Alala</i>	woodblock print with watercolor and ink	\$400.00
Simcock, Brennan	<i>N. Shore 15' - 25'. S. Shore Flat - 1'</i>	linocut, chine colle	\$450.00
Smith, Michael Patrick	<i>Yin Yang Fern</i>	Cook Pine wood	\$4,816.75
Solomon, Rebecca	<i>Infrastructure</i>	acrylic, watercolor, graphite, and colored pencil	\$1,041.60
Stillwell, Jefferson	<i>Migration</i>	mixed	\$1,439.48

(Relocatable Works of Art Acquisitions continued from page 6)

Artist	Title	Medium	Price
Tidmarsh, Dominic	<i>Kinolau</i>	acrylic on unstretched canvas	\$5,500.00
Turner, Helen	<i>Sandy Path</i>	pastel on paper	\$1,015.56
Waara, Christine	<i>Hanging Loose in Hawaii</i>	watercolor	\$885.42
Wold, Erik	<i>Assembled Container 1</i>	high fired stoneware	\$364.58
Woollard, George	<i>Power Up</i>	lacquered wood	\$3,640.00
<b>Number of Artworks: 77</b>		<b>Total</b>	<b>\$164,374.31</b>

### GIFTS TO THE ART IN PUBLIC PLACES COLLECTION

Artist	Title	Medium	Appraised Value
Kaneko, Jun	<i>Untitled Head (II)</i>	black and white glazed ceramic	\$205,000.00
<b>Number of Artworks: 1</b>		<b>Total</b>	<b>\$205,000.00</b>

### Hawai'i State Art Museum

The Hawai'i State Art Museum opened in 2002 and provides access to the public to curated exhibitions of artworks from the Art in Public Places Collection.

In FY2016, the following exhibitions were on display: *Image & Imagination*, *He Makana: The Gertrude Mary Joan Damon Haig Collection*, *Hawai'i: Change & Continuity*, the 53rd Annual Regional Scholastic Art Awards Exhibition and *Voyaging: The Art of Wayfinding*.

During the year 52,025 people visited HiSAM: among these were 163 school groups and 14 community groups touring the galleries. Monthly programming included First Fridays, featuring performances at the museum during open evening hours (3,789 visitors); Second Saturdays, featuring hands-on family oriented art activities (2,197 participants); and Art Lunch, HiSAM's noontime lecture series (360 audience count).

The museum's outreach education program, the Art Bento Program @ HiSAM, serviced 16 schools (138 classes; 3,420 students, 138 teachers, 140 chaperones) from Oahu's four school districts. The program theme is "Responding to Art" and uses the Hawai'i State Art Museum as a learning laboratory for



Second Saturday at HiSAM with the Hawai'i Potters' Guild. Photo: Susan Hogan

students in grades 2 through 6, their teachers and chaperones. Works of art from the Art in Public Places Program on view in the galleries serve as a catalyst for inquiry-based learning in literacy, visual and performing arts. Teaching Artists from the Artists-in-the-Schools roster lead each class through a four-part journey including a pre- and post-visits in the classroom and a day at the museum. Professional development for teachers is also included.

HiSAM facilities were rented on 13 occasions by private parties and 13 times for government rentals. The Hawai'i State Foundation on Culture and the Arts hosted HiSAM's annual Volunteer Appreciation dinner, the awards ceremony for the 54th Annual Regional Scholastic Art Awards, and HiSAM was a location for a scene in a major Hollywood motion picture.



Art Lunch at HiSAM: kapa and plant dye samples shared by kapa maker Dalani Tanahy. Photo: State Foundation on Culture and the Arts



## APP FINANCIAL SUMMARY

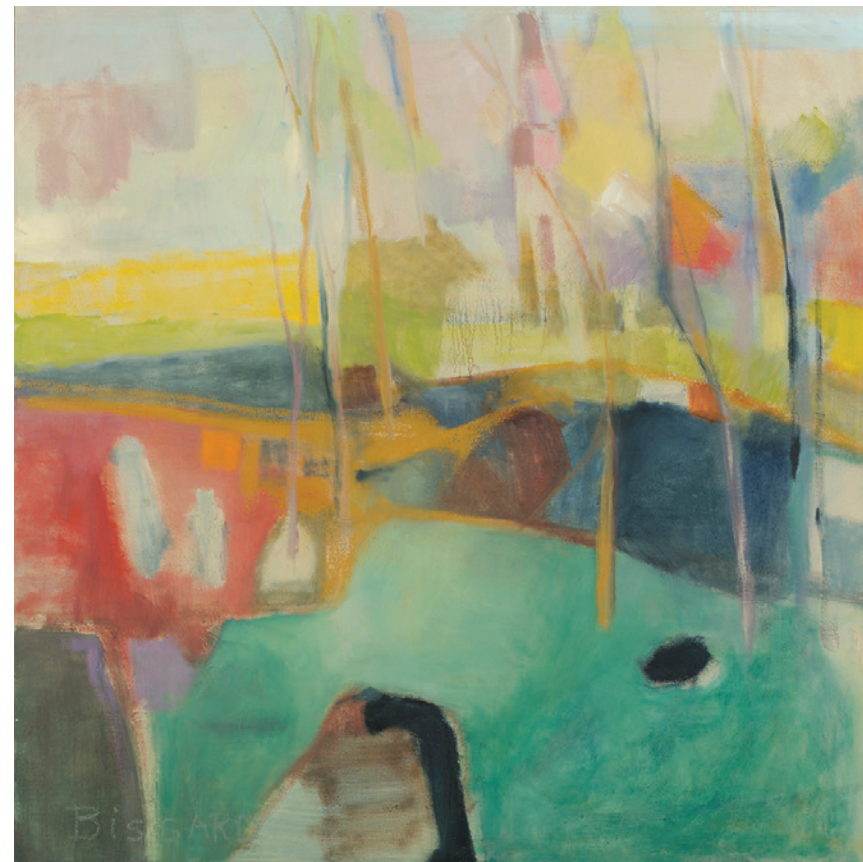
Fiscal Year Ended June 30, 2016

### REVENUES

Works of Art Special Fund Allotment Ceiling.....	\$4,350,527.00
<b>TOTAL.....</b>	<b>\$4,350,423.00</b>

### EXPENDITURES & ENCUMBRANCES

Commissioned Works of Art.....	\$669,475.14
Relocatable Works of Art .....	\$231,946.30
Acquisitions.....	\$164,374.31
Acquisition Award Selection Committees.....	\$15,947.50
Exhibition Services .....	\$51,624.49
Commissions Conservation Services .....	\$297,908.28
Registration.....	\$14,700.02
Relocatable Works of Art Conservation Services.....	\$5,055.00
Art in Public Places Administration .....	\$1,660,107.22
Personnel.....	\$1,144,133.60
Operating.....	\$515,973.62
Gallery Operations .....	\$413,321.75
<b>TOTAL.....</b>	<b>\$3,292,513.71</b>



Ulupalakua by Judy Bisgard, oil on canvas. Photo: Paul T. Hayashi

## BIENNIUM GRANTS PROGRAM

The HSFCFA Biennium Grants Program provides funding for organizations who support programs and projects that advance the arts, culture, and the humanities in the lives of the people of Hawai'i. Support for the program is made possible through appropriations from the Hawaii State

Legislature and the National Endowment for the Arts. Over the years, these organizations have learned to rely less on SFCA as a source of funding and more as an affirmation of their role in local culture. In FY 2016, grants were awarded to 61 organizations statewide in the amount of \$500,000.

### Arts Education Grants

Organization	Project Title	Amount
Alliance for Drama Education	ADE Basic	\$9,897.00
Big Island Dance Council	Big Island Dance Education Project-Basic	\$2,397.00
Center for Hawaiian Music Studies, Inc.	Arts Education for Ka`u	\$6,772.00
Children's Literature Hawai'i	Conf. on Literature and Hawaii's Children	\$3,647.00
Hawaii Opera Theatre	Hawaii Opera Theatre-Arts Education FY 16	\$10,522.00
Hawaii Theatre Center	HTC Educational Programming 2015-16	\$3,772.00
Hawaii Youth Symphony Association	Symphony Program: Music Education	\$7,897.00
Holualoa Foundation for Arts and Culture	Basic Support for Donkey Mill Art Center	\$5,272.00
Honolulu Museum of Art	Art to Go	\$5,022.00
Honolulu Theatre for Youth	Statewide Tour	\$11,206.00
Kahilu Theatre Foundation	Kahilu Theatre Foundation Youth Education Programs	\$5,521.00
Lahaina Arts Association/LAA	Basic Youth Art Outreach	\$6,396.00
Maui Academy of Performing Arts	School Partnership Programs	\$9,021.00
Maui Dance Council	Chance to Dance	\$6,271.00
University of Hawai'i Department of Music	UH-Mānoa Wind Ensemble Workshop/Performance Residencies on Neighbor Islands	\$5,456.00
	<b>Total</b>	<b>\$99,069.00</b>

### Community Arts Grants

Organization	Project Title	Amount
East Hawai'i Cultural Council	Basic Support	\$4,022.00
Garden Island Arts Council	Kaua'i Community Arts Basic Development	\$12,022.00
Hawaii Academy of Performing Arts	The ARTS at Marks Garage Basic	\$7,722.00
Hawaii Craftsmen	Hawaii Craftsmen Basic Programs	\$7,022.00
Hawai'i Forest Institute	Hawaii's Woodshow Na La'au o Hawai'i 2016	\$3,622.00
Hawai'i Potters' Guild	Basic Support for Instructors at the Hawaii Potters' Guild	\$5,922.00
Kalihi-Palama Culture and Arts Society, Inc.	Kalihi-Palama Basic Community Arts Project	\$13,421.00
Portuguese Association of Maui	Basic Portuguese Culture	\$1,421.00
Society for Kona's Education & Arts	The Basic Art of Community Learning	\$16,021.00
Sounding Joy Music Therapy, Inc.	Music for People with Special Needs	\$14,021.00



Organization	Project Title	Amount
Storybook Theatre of Hawaii, The	Basic Programming	\$7,621.00
University of Hawai'i, Outreach College	Pacific New Media	\$2,921.00
Volcano Art Center	Ulu No'eau	\$11,621.00
	<b>Total</b>	<b>\$107,379.00</b>

**Heritage and Preservation Grants**

Organization	Project Title	Amount
Friends of Waipahu Cultural Garden Park	BASIC-Sharing the Plantation Heritage	\$10,422.00
Hawai'i Council for the Humanities	Hawai'i History Day	\$15,290.00
Hawaii United Okinawa Association	"Warabi Ashibi"-Okinawan Cultural Day Camp for Children	\$3,752.00
Hawaiian Mission Houses Historic Site	Hawaiian Mission Houses Historic Tours and And Archives School Programs	\$12,282.00
Hula Preservation Society	BASIC- Sharing the Future	\$15,472.00
Kauai Historical Society	Basic Kauai History's	\$13,393.00
Kona Historical Society	Basic Historic Site Interpretation	\$16,121.00
Moanalua Gardens Foundation	38th Annual Prince Lot Hula Festival	\$14,563.00
Na'alehu Theatre	Basic Masters of Hawaiian Musician Outreach	\$7,891.00
	<b>Total</b>	<b>\$109,186.00</b>

**Presentation Grants**

Organization	Project Title	Amount
Bamboo Ridge Press	Bamboo Ridge Basic	\$5,016 .00
Hawaii Book & Music Festival	HAWAII BOOK & MUSIC FESTIVAL	\$1,105.00
Hawai'i Handweavers' Hui	The Fluid Grid: Tool Modifications for Handweaving	\$2,189.00
Honolulu Printmakers	Visiting Artist/Annual Exhibition	\$3,972.00
Maui Arts and Cultural Center	MACC Presents	\$8,628.00
University of Hawai'i at Mānoa, Department of Art and Art History	UHM Art and Art History Community Outreach Program: Exhibitions and Intersections	\$6,718.00
	<b>Total</b>	<b>\$27,628.00</b>

**Presentation-Performing Arts Grants**

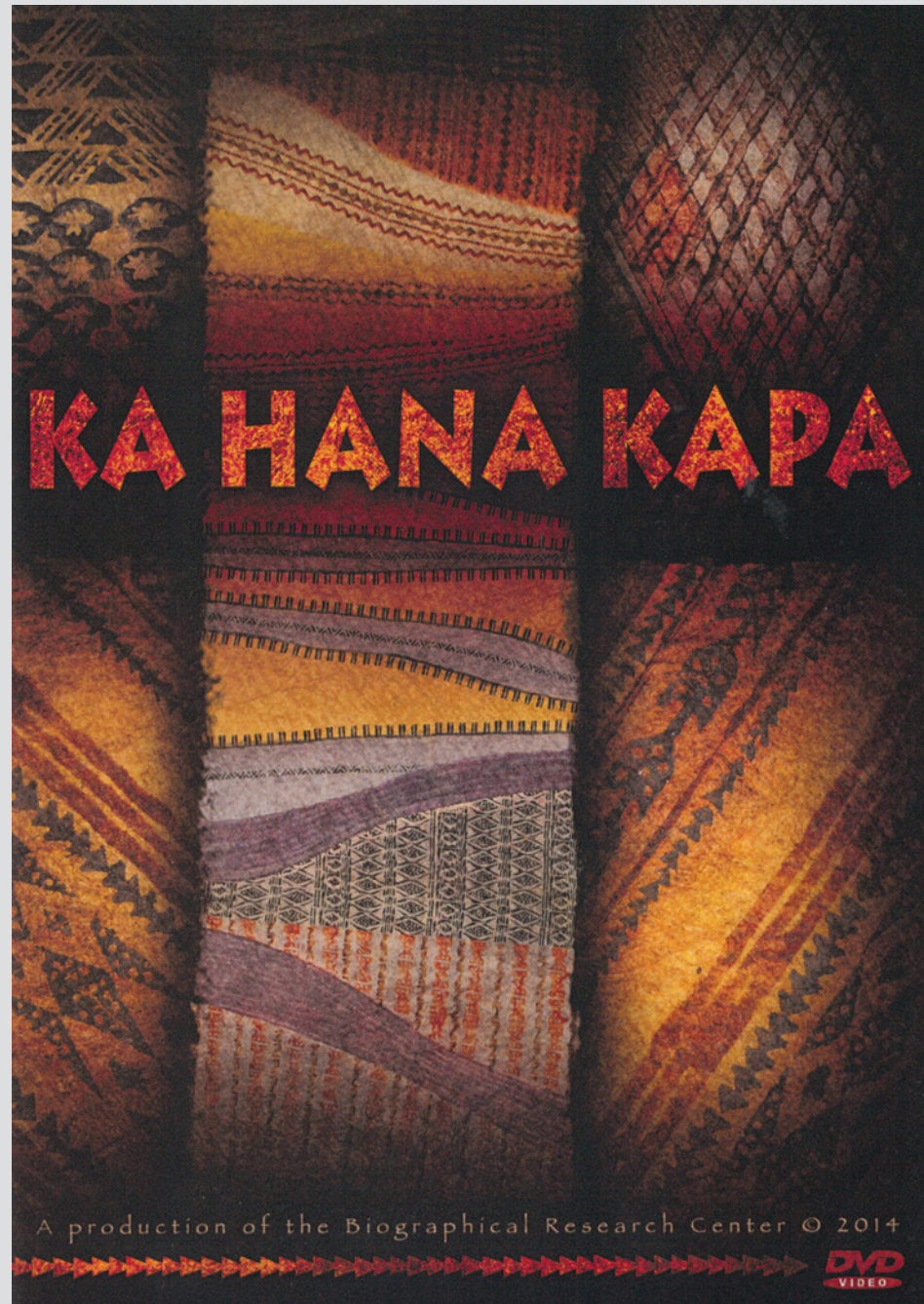
Organization	Project Title	Amount
Aloha Performing Arts Company	APAC Basic Season 2015-2016	\$12,439.00
Chamber Music Hawaii	Basic Statewide Chamber Music	\$12,355.00
Diamond Head Theatre	MAMMA MIA	\$7,439.00
Early Music Hawaii	EMH Concert Series 2015-2016	\$3,889.00
Ebb and Flow Arts, Inc.	North South East West Festival 2015-2016	\$5,855.00
Friends of the Ballet/Ballet Hawaii	Ballet Hawaii Full Length Ballets and Presentations 2015-2016	\$16,939.00
Friends of the Palace Theatre	Celebration of Hawaiian Music	\$7,855.00

Organization	Project Title	Amount
Hawai'i Concert Society	Hawai'i Concert Society Season 2015-2016	\$4,605.00
Hawaii Performing Arts Company dba Mānoa Valley Theatre	Play Productions	\$9,522.00
The Honolulu Chorale	Honolulu Chorale Basic	\$2,605.00
The Kapolei Chorale	Kapolei Chorale Basic Presentation/Performing Arts Project 2016	\$4,521.00
The Kauai Chorale	Basic Kauai Chorale Concert Series	\$3,088.00
Kona Choral Society, Inc.	Basic Support	\$7,771.00
Kumu Kahua Theatre	Kumu Kahua 45th Season-Basic	\$13,354.00
Nova Arts Foundation, Inc.	IONA Contemporary Dance Theatre Basic	\$13,496.00
O'ahu Choral Society	Choral Masterworks on Neighbor Islands	\$9,688.00
University of Hawai'i, Leeward CC Theatre	41st Season-Kikaha Na Manu	\$14,621.00
West Hawaii Dance Theatre	West Hawaii Dance Theatre Basic Program	\$6,696.00
	<b>Total</b>	<b>\$156,738.00</b>
	<b>GRAND TOTAL</b>	<b>\$500,000</b>

**Grants Panelists, FB 2015-2017** (Panels were chaired by Commissioners in bold.)

Arts Education	Community Arts	Heritage and Preservation	Presentation (Visual Arts, Literary Arts)	Presentation-Performing Arts (Dance, Theatre, Music, Opera)
<b>Barbara Saromines-Ganne</b>	<b>Joel Guy</b>	<b>Jane Clement</b>	<b>Eva Washburn-Repollo</b>	<b>Michael Moore</b>
<b>Sherman Warner</b>	<b>Karen Tiller Polivka</b>	<b>Sherman Warner</b>	<b>Rai Saint Chu</b>	<b>Barbara Saromines-Ganne</b>
Val Krohn Ching <i>O'ahu</i>	Melly Wilson <i>O'ahu</i>	Toni Han <i>O'ahu</i>	Cammie Matsumoto <i>Kaua'i</i>	Wayne DeMello <i>O'ahu</i>
Maile Loo <i>O'ahu</i>	Beverly Major <i>O'ahu</i>	Celeste Ohta <i>O'ahu</i>	Louise King Lanzilotti <i>O'ahu</i>	Judy Van Zile <i>O'ahu</i>
John Magnusson <i>O'ahu</i>	Donna Blanchard <i>O'ahu</i>	Deborah Dunn <i>O'ahu</i>	Kazu Kauinana <i>O'ahu</i>	Joy Holland <i>Hawai'i</i>
Inger Tully <i>Maui</i>	Dennis Taniguchi <i>Hawai'i</i>	Damaris Kirchhofer <i>O'ahu</i>	Marcia Morse <i>O'ahu</i>	Jamie Simpson Steele <i>O'ahu</i>
Jason Blake <i>Kaua'i</i>	Alita Charron <i>O'ahu</i>	Dawn Sueoka <i>O'ahu</i>	Erin Palmer <i>O'ahu</i>	Norma Chun <i>O'ahu</i>
	Neida Bangerter <i>Maui</i>	Hokulani Holt <i>Maui</i>	Malia Van Heukelem <i>O'ahu</i>	Sandy McGuinness <i>Maui</i>





Ka Hana Kapa DVD cover

## FOLK AND TRADITIONAL ARTS

Folk & Traditional Arts cultural outreach provides access to cultural arts experiences with workshops, lecture-demonstrations, cultural arts residencies and displays at community festivals. Hawaii's traditional arts practitioners who are skilled not only in their cultural art forms, but in teaching and presenting, are called upon to share what they know in communities with little knowledge about certain traditional arts practices.



E`Ike Hou la Lana`i summer 2016 group. Photo: courtesy Lana`i Culture and Heritage Center

### Living Heritage Series

*E`Ike Hou la Lana`i* is the four-week cultural literacy/place-based Native Hawaiian education initiative by the Lana`i Culture and Heritage Center that takes place in the summer on Lana`i. Designed for Lana`i youth ages 12 through 18, this cultural arts residency was attended by 32 youth with 8 cultural practitioner teachers from June 13 through July 8, 2016. Students researched information, actively learned about their natural environment outdoors, developed artistic and technical murals depicting lessons, learned creative writing in Hawaiian and English, and made presentations to their student peers. The residency concluded with a ho`ike to share what they learned with their parents and community members

**Ka Hana Kapa National Broadcasts**—With assistance from Pacific Islanders in Communication and through the National Educational Telecommunications Association, Ka Hana Kapa, a documentary about Hawaiian kapa and kapa making produced in 2014 by the Biographical Research Center production team, was broadcast nationally on the PBS national network in May 2016.

### Culture Grants

Culture grants allow access to deep and sustained learning about different cultures in the state. Apprenticeship Grants focus on adult life-long learning where there is commitment between teachers and students and advancement of cultural knowledge and skills. Culture Learning Grants support inter-generational learning for children and youth, families, and elders in the cultural community, and allows a broad spectrum of cultural learning.

**Apprenticeship Grants** support intensive advanced training in a cultural art form or practice, taught by Hawaii's most masterful cultural practitioners. One of the objectives is to train more practitioners in particular cultural art forms or lineages and to train the next generation's teachers to carry on the tradition. In 2016, 14 apprenticeship projects were fully funded and implemented. A recommendation for the program is to support cultural sharing on a different island. `Ulana `Ie—Hawaiian Basketry information and examples was shared on Maui (Kapalua and Wailuku) in the spring and Traditional Festival Music of Old Tokyo was shared in Hilo in May.



## Apprenticeship Grants

Teacher	Apprentice	Project Title	Grant Amount
<b>CHINESE</b>			
Lisa Au	Denise Bui	Cantonese Opera Singing	\$4,000
Agnes Chan	Mabel Lau	Cantonese Opera Singing	\$4,000
<b>HAWAIIAN</b>			
Mahi La Pierre	`Iliahi Doo	`Ukeke: The Indigenous Stringed Instrument of Hawai'i	\$5,700
Kumula`au Sing	Haunani Balino-Sing	`Ulana `Ie–Hawaiian Basketry	\$4,000
Doreen Henderson	Pilialoha Johnson	Kumu Lei Hulu O Hilo	\$4,800
Cyril Pahinui	Jeffrey Au Hoy, Sean Robbins	Hawaiian Kiho`alu Pahinui Tunings and Style	\$4,000
Palani Sinenci	Kainoa Holt	Master Hale Builder	\$6,500
Kalena Silva	Keli`i Ruth	Ke Oli Hawai'i Ku`una (Traditional Hawaiian Chant)	\$6,478
Benjamin Chong	Jeff Peterson, Ian O'Sullivan	Ukulele Studies with Ben Chong	\$4,000
<b>JAPANESE</b>			
Gertrude Tsutsumi	Howard Asao	Methodology of Choreographing Japanese Dance	\$4,000
Kenny Endo	Ensemble	Traditional Festival Music of Old Tokyo	\$4,000
<b>OKINAWAN</b>			
Frances Nakachi Kuba	Eric Kobayashi	Yuushuu Sho–Konkuru Certification	\$4,000
Lynne Nakasone	Lisa Nakandakari, Julia Okamura, Keith Oshiro	Classical Female Ryukyuan Dance	\$4,000
Cheryl Nakasone	Charlene Gima, Sumie Uehara	Okinawan Classical Dance and Kumiwudui	\$4,000
<b>Total Apprenticeship Grants</b>			<b>\$63,478</b>

**Culture Learning Grants** help to build cultural learning in local cultural communities, particularly with cultural arts and practices with low participation in HSFCFA programs. Inter-generational inclusion supports children and adult family members learning together. Family elders sharing what

they know is highly encouraged. Culture learning includes language, history, natural environment, stories, visual arts & crafts, and performing arts. In 2016, 2 culture learning projects were fully funded and implemented



Apprentice Grant public presentation at Kahuku Public Library demonstrating `Ukeke. Mahi La Pierre (teacher, left) and `Iliahi Doo (apprentice, right). Photo: courtesy Mahi La Pierre



Learning a sitting dance in the Culture Learning after-school Pacific Islands Dance residency. Photo: Denise Miyahana

## Culture Learning Grants

Organization	Project Title	Grant Amount
<b>BURMESE</b>		
Myanmar Association of Hawaii	Classical Basic Burmese Dance Teaching & Learning Project	\$5,000
<b>PACIFIC ISLANDS</b>		
Kalikolehua–El Sistema Hawaii	Preserving Cultural Traditions in 21st Century Hawaii (Teaching Pacific Islands dances at Towers of Kuhio Park)	\$5,000
<b>Total Culture Learning Grants</b>		<b>\$10,000</b>

## ARTS EDUCATION

The SFCA Strategic Plan cites arts education as one of five priorities for the agency. The goal of the Arts Education Program is to support access to quality arts experiences for Hawaii's K-12 students. We do this through Artists in the Schools grants to public schools for residencies with teaching artists. These artists have gone through a rigorous screening process by SFCA to ensure they are gifted teachers as well as artists. We also offer professional development for classroom teachers and teaching artists to give them the knowledge, skills and confidence to integrate the arts into the school day. The SFCA reached our goal with assistance from the other ARTS FIRST Partners. By collaborating, we achieve more than we could individually. The many accomplishments of all the ARTS FIRST Partners are listed on pages 22-25.

### AITS Grants for Arts Residencies

This is the ninth year that SFCA has administered the Artists in the Schools Program, combining funds from the State Legislature, the National Endowment for the Arts, and private sources to provide schools statewide with fine arts residencies. This is the eighth year that the Hawaii Community Foundation has generously supported AITS through matching private funds.

Public schools, including charter schools, may apply annually to the SFCA for grants of up to \$6000 per school for

residencies in visual arts, dance, drama, music and literary arts. A residency engages students in eight or more sessions with a teaching artist from the SFCA's Artistic Teaching Partners Roster. The purpose is to spark students' awareness of and interest in the arts and also to develop students' knowledge and skills in the arts. Students create art, share or exhibit their art, and respond to art, thereby honing 21st Century skills: critical thinking, communication, collaboration and creativity. Many of the residencies integrate the fine arts with other core subject areas.

In 2015-2016, \$517,548 was granted to 93 schools, reaching over 13,800 students. Schools also contributed \$103,693 to support these arts residencies.

In addition, \$30,000 in SFCA AITS funds was used to support the Collaborative Residency Project, which paired ten advanced teaching artists with classroom teachers to co-plan and co-teach an arts integrated residency at 11 schools. Training/coaching was given by Honolulu Theatre for Youth. There were thirteen collaborative residencies serving a total of 346 students in grades 1 to 5 at schools on O`ahu, Maui, Kaua`i and Hawai`i Island. This project was spearheaded by Honolulu Theatre for Youth, with support from the Hawaii Community Foundation and SFCA.

### AITS Grants for Arts Residencies

School	Project Title	Teaching Artist	Grant
Aiea Elementary School *	The Magic Flute	Hawaii Opera Theatre	\$5,373
Aiea Intermediate School *	In the 'Write' Way	Honolulu Theatre for Youth	\$4,955
`Aikahi Elementary School *	Text Explorations	Honolulu Theatre for Youth	\$4,818
Ala Wai Elementary School	Integrating African Percussion with Social Studies and STEM	Michael Wall	\$6,000
Aliamanu Elementary School *	Dramatic Agents of Change	Honolulu Theatre for Youth	\$5,818
Barbers Point Elementary School *	Cycles Around Us	Honolulu Theatre for Youth	\$5,818
Castle High School	Exploring Culture and Identity Through Poetry–Youth Speaks Hawaii	Pacific Tongues	\$5,518



School	Project Title	Teaching Artist	Grant
Ewa Elementary School *	The Drama of Story	Honolulu Theatre for Youth	\$6,000
Fern Elementary School	Art Discoveries—A Colorful Journey Around the World	Regina Bode	\$6,000
Hahaione Elementary School	Dramatic Learning for grades 1, 3, and 5	The Drama Crew (Michael Cowell)	\$6,000
Haiku Elementary School *	Artful Articulations	Maui Dance Council	\$6,000
Hālau Kū Māna PCS *	A way in: the art and science of field journals	Honolulu Museum of Art	\$4,473
Hana High & Elementary School *	Our Culture makes Us Special	Maui Dance Council	\$6,000
Hawai'i Academy of Arts & Science PCS	"Drawing Upon the NEWS, Then and Now"—Visual Arts Integrates with Knowledge and Ideas	Kathleen Kam	\$4,800
Hilo Intermediate School	Art from the Inside Out: Self-discovery through Collage and Free Verse Poetry	Beth Marcil	\$5,995
Hilo Union Elementary School	Common Core in Motion	Vicky Robbins	\$1,727
Hokulani Elementary School	The Nature of Things: Exploring the cycles of nature and how animals and plants survive	James McCarthy	\$6,000
Honaunau Elementary School *	Dramatic Expression	Honolulu Theatre for Youth	\$6,000
Ilima Intermediate School	Ewa Beach Pride	Jeff Pagay	\$6,000
Innovations PCS *	Drama, Culture and the World We Shape	Honolulu Theatre for Youth	\$6,000
Inouye Elementary School *	Creative Comprehension: Understanding Text through Drama	Honolulu Theatre for Youth	\$3,205
Jarrett Middle School	Pacific Islands Culture through Clay: Melanesia, Micronesia, and Polynesia	Leah York, Rayna Galati	\$6,000
Jefferson Elementary School	Science Soundscapes: Bringing Science to Life with Music	Michael Wall	\$6,000



Pirates at Aiea Elementary School in residency with Hawaii Opera Theatre (HOT). Photo: courtesy of HOT

School	Project Title	Teaching Artist	Grant
Ka'ahumanu Elementary School *	Artistic Inquiry	Honolulu Museum of Art	\$5,205
Ka'ala Elementary School	Dramatic Understanding for Grades 1 & 2: Show Me What You Know!	The Drama Crew (Michael Cowell)	\$6,000
Ka'elepulu Elementary School *	Character Encounters: Dramatic Explorations of Text	Honolulu Theatre for Youth	\$6,000
Kahakai Elementary School *	Celebrating Hawaii With Family and Friends	Holualoa Foundation for Arts and Culture	\$4,282
Kahala Elementary School	Creative Habits: Bringing Habits of Mind to Life in the Classroom Through Drama	James McCarthy	\$6,000
Kahului Elementary School *	Artistic Arithmetic	Maui Dance Council	\$6,000
Kaiulani Elementary School	The African Savanna through Clay	Leah York, Rayna Galati	\$6,000
Kalaniana'ole Elementary and Intermediate School	"More Than a Story" -- Daily News and Front Pages Meet the Visual Arts and Social Studies	Kathleen Kam	\$6,000
Kalihi Kai Elementary School	Self Portraiture: Who Am I? (Turnaround Arts)	Regina Bode	\$6,000
Kamaile Academy PCS	Imagining Text (Turnaround Arts)	Honolulu Theatre for Youth	\$6,000
Kamakau PCS *	Honoring Kupuna: Performing stories of respect	Honolulu Theatre for Youth	\$4,955
Kamali'i Elementary School	Health is Wealth—Moving the Mind & Body	Lasensua Osborne	\$6,000
Kaneohe Elementary School *	History, the Creative Way	Honolulu Theatre for Youth	\$5,591
Kanoelani Elementary School	Sound Stories!	Michael Wall	\$6,000
Kapalama Elementary School *	Roots—Cultural Identity and Celebration	Honolulu Museum of Art	\$5,218
Kapiolani Elementary School	From Construction to Bringing Puppets to Life	Bonnie Kim	\$6,000
Kaunakakai Elementary School *	Artful Articulations	Maui Dance Council	\$6,000
Kawaikini PCS	Moving into Mo'olelo—Exploring Hawaiian Stories in the Hawaiian Language through Creative Dance	Mauli Ola Cook	\$6,000
Kealakehe Elementary School*	Dramatic Expression	Honolulu Theatre for Youth	\$6,000
Kihei Elementary School	Dancing the Diaspora	Lasensua Osborne	\$5,691
Kilauea Elementary School *	Exploring Hand Drumming to World Music & Leaping into Literacy	Lotus Arts Foundation, Maui Ola Cook	\$6,000
Kilohana Elementary School *	Rhythm and Meaning	Maui Dance Council	\$6,000
Kohala Elementary School	Chinese Shadow Puppetry	Bonnie Kim	\$4,300
Konawaena Elementary School	Connecting Art & Math	Ellen Crocker	\$5,477
Konawaena High School	Visual Literacy and Language Arts	Ellen Crocker	\$4,682
Kua O Ka Lā PCS	Health is Wealth—Moving the Body & Mind	Lasensua Osborne	\$4,209
Kula Elementary School	Musical Teamwork	Marguerite Heart	\$6,000
Lana'i High & Elementary School *	Artistic Arithmetic	Maui Dance Council	\$6,000
Lanikai Elementary PCS *	Creative Kuleana	Honolulu Theatre for Youth	\$6,000
Leilehua High School	Symbols of Identity	Leah York	\$4,977
Lihikai Elementary School *	Rhythm and Meaning	Maui Dance Council	\$5,869
Liholiho Elementary School *	Exploring Literacy Through Dramatic Creative Expression	Honolulu Theatre for Youth	\$5,591



School	Project Title	Teaching Artist	Grant
Likelike Elementary School	Lifecycles through Clay/ Ocean Studies through Clay/ Hawaiiana and Micronesian Culture through Clay/ Native American Culture through Clay	Leah York, Rayna Galati	\$6,000
Lunalilo Elementary School	Hawaiiana Through Clay	Leah York, Rayna Galati	\$6,000
Ma`ema`e Elementary School *	Critical Thinking, Creative Expression	Honolulu Theatre for Youth	\$6,000
Makakilo Elementary School *	Explorations! The Drama of Science	Honolulu Theatre for Youth	\$4,682
Makawao Elementary School	Musical Teamwork	Marguerite Heart	\$6,000
Mālama Honua PCS *	Voyaging Mo`olelo Expressed through Visual and Theater Arts	Honolulu Museum of Art	\$5,282
Maui Waena Intermediate School	Paper Engineering: The Art of Science and Pop-up Books	Beth Marcil	\$4,517
Mauka Lani Elementary School *	The Character of Drama, the Drama of Character	Honolulu Theatre for Youth	\$5,818
Maunaloa Elementary School *	Artful Articulations	Maui Dance Council	\$4,600
Maunawili Elementary School	Dramatic Science	The Drama Crew (Michael Cowell)	\$6,000
Mililani Mauka Elementary School	Ho`omau: Pacific Patterns	Alyce Dodge	\$6,000
Moanalua Elementary School *	Every Picture Tells A Story	Honolulu Museum of Art	\$5,255
Moanalua Middle School	Finding Your Bravery Through the Ensemble	The Drama Crew (Michael Cowell)	\$6,000
Mokapu Elementary School *	Story Thinking: Dramatic Exploration of Text	Honolulu Theatre for Youth	\$6,000
Mountain View Elementary School	Characters of Clay-Making Stories Come Alive!	Lisa Louise Adams	\$5,980
Nuuanu Elementary School	Dramatic Learning	The Drama Crew (Michael Cowell)	\$6,000
Pā`ia Elementary School *	Artistic Arithmetic	Maui Dance Council	\$5,650
Palolo Elementary School	(Gr4) Hawaiiana and Micronesian Culture through Clay & (Gr5) Native American Culture through Clay	Leah York, Rayna Galati	\$6,000
Pauoa Elementary School	Sound Stories	Michael Wall	\$6,000
Pearl City Elementary School *	Creative Exploration: Drama and Stories	Honolulu Theatre for Youth	\$5,932
Pōmaika`i Elementary School	Lyrics & Literature: Making the Text Come Alive through Songwriting	Paul Wood	\$6,000
Pukalani Elementary School	Musical Teamwork	Marguerite Heart	\$3,662
Pu`u Kukui Elementary School *	Our Culture Makes Us Special	Maui Dance Council	\$6,000
Red Hill Elementary School	D.R.U.M.–Developing Rhythm and Understanding Movement–A Cultural Experience	Michael Wall	\$6,000
Salt Lake Elementary School *	Story Thinking: Interpreting Text Creatively	Honolulu Theatre for Youth	\$6,000
Volcano School of Arts & Sciences PCS	Making Fonts of You–FUNdamentals of Bookmaking using the Visual and Language Arts	Kathleen Kam	\$5,909
Voyager PCS *	The Drama of Nature	Honolulu Theatre for Youth	\$6,000

School	Project Title	Teaching Artist	Grant	
Waiahole Elementary School	Writing, Rhythm and the Taiko Form	Chizuko Endo	\$6,000	
Waiakea Elementary School	From Construction to Bringing Puppets to Life	Bonnie Kim	\$6,000	
Wai`alae Elementary PCS *	Voyages of Discovery	Honolulu Theatre for Youth	\$4,818	
Wai`anae Elementary School	Literacy Through Movement (Turnaround Arts)	Mimi E Wisnosky	\$6,000	
Waiiau Elementary School *	Dramatic Agents of Change	Honolulu Theatre for Youth	\$4,682	
Waihe`e Elementary School *	Glee Club: Sing It Out!	Maui Academy of Performing Arts	\$6,000	
Waikiki Elementary School	We Got The Beat: Developing musical skills and thinking through ensemble	James McCarthy	\$6,000	
Wailuku Elementary School *	Drama Moves: Making Meaning of Text with Body and Voice	Maui Academy of Performing Arts	\$6,000	
Waimalu Elementary School *	Dramatic History	Honolulu Theatre for Youth	\$5,250	
Waimanalo Elementary and Intermediate School *	Roots–Cultural Identity and Celebration	Honolulu Museum of Art	\$2,964	
Waipahu Elementary School *	At the Core: Exploring Values through Drama	Honolulu Theatre for Youth	\$6,000	
			<b>SFCA General Funds</b>	<b>\$215,284</b>
			<b>NEA Federal Funds &amp; General Fund match</b>	<b>\$50,160</b>
			<b>Hawaii Community Foundation Funds*</b>	<b>\$252,104</b>
			<b>TOTAL AWARD</b>	<b>\$517,548</b>
			<b>TOTAL FUNDED SCHOOLS</b>	<b>93</b>

\* Schools funded by the Hawaii Community Foundation. HCF funds in support of the Artists in the Schools Program are not administered through the State.



Chizuko Endo taught taiko drumming at Waiahole Elementary. Photo: Vivien Lee



## Collaborative Residency Teams

Teaching Artist	Teacher	School	Grade
Vicky Robbins	Kathleen Wines	Connections Public Charter School	5
Vicky Robbins	Kathleen Booth	Connections Public Charter School	1
Ellen Crocker	Juan Espinal	Konawaena Elementary School	5
Mardi Swatek	Muriel Warne	Pukalani Elementary School	2
Maggie Costigan	Eliza Akana Yoshida	Pu`u Kukui Elementary School	5
Maggie Costigan	Talya Bartlett	Pu`u Kukui Elementary School	5
Lisa Louise Adams	Tracie Kuniyuki	Mountain View Elementary School	2
Marcia Pasqua	Mie Wallace	Makakilo Elementary School	1
Marcia Pasqua	Rebecca Hirakami	Kalihi Kai Elementary School	4
Paul Wood	Bo Kim-Bautista	Wailuku Elementary School	3
Michael Wall	Brenda Fong	Pauoa Elementary School	2
Mauli Cook	Lei Wan	Kawaikini Public Charter School	3
Miho Morinoue	Joanna Schiller	Innovations Public Charter School	1 & 2
<b>SFCA Artists in the Schools funds to support Collaborative Residencies</b>			<b>\$30,000</b>

## PRESENTING AND TOURING OUTREACH STATEWIDE CULTURAL EXTENSION PROGRAM (\$50,000)

Serving locations and community venues to provide access to arts and cultural presentations continues to be the primary focus of HSFCA's partnership with the University of Hawai'i Outreach College's Statewide Cultural Extension Program (SCEP). Statewide programming went to schools, public libraries, national parks and senior centers. This program is successful in serving Hawaii's older adults in a network of 50 public libraries on six islands and in Maui County senior centers. Families with young children often attend presentations at public libraries. In FY2016, 52 artists (including 34 groups and 17 cultural practitioners) conducted presentations on six islands that reached over 6,800 individuals across the state including 3,755 pre-K through 12 school aged children and youth. SCEP's presenting and touring offers a wide range of

Hawaii's various arts and cultural traditions including contemporary and traditional performing arts, Hawaiian music, a variety of cultural presentations, masks and storytelling. (<http://www.outreach.hawaii.edu/scep/artist.asp>). New artists on the SCEP roster are Ian O'Sullivan (guitar) and Bobby Ingano (steel guitar). SCEP also assisted us with a pilot outreach to the Towers of Kuhio Park in Kalihi for a storytelling residency from February through May. Coordinated with the Hawaii Literacy non-profit organization, each one-hour storytelling activity took place in the Family Library. Visiting storytellers Jeeva Raghunath and Dr. Margaret Read MacDonald joined SCEP storytellers Dann Seki, Nyla Fujii-Babb, Janice Morimoto and Dave Del Rocco.



Bonnie Kim at Kaimuki Public Library telling Korean folktales with puppets. Photo: Denise Miyahana



Aunty Nyla and children at the Saturday Storytelling in the Family Library at Towers of Kuhio Park, dancing to the story. Photo: Denise Miyahana

## DESIGNATED PROGRAMS PROJECTS

Fiscal Year Ended June 30, 2016

### Expenditures

Program	Project Title	Project Partners	Amount	Total
<b>Arts Education</b>				<b>\$ 401,444</b>
	Artists in the Schools Program Administrative Support (includes Artists in the Schools Grants, \$265,444) (includes Collaborative Residencies Support, \$30,000)	Hawaii Arts Alliance	\$315,944	
	Professional Development for Classroom Teachers Program Support (Workshops)	Honolulu Theatre for Youth	\$22,000	
	Professional Development for Teaching Artists	Hawaii Arts Alliance	\$26,000	
	Professional Development for Classroom Teachers Program Support (Maui Summer Institute)	Maui Arts & Cultural Center	\$10,000	
	Professional Development for Classroom Teachers Program Support (Statewide Summer Institute)	Hawaii Arts Alliance	\$10,000	
	Poetry Out Loud-Hawaii	Honolulu Theatre for Youth	\$17,500	
<b>Folk &amp; Traditional Arts</b>				<b>\$86,600</b>
	Folk & Traditional Arts Program Support (includes Folk & Traditional Arts Grants, \$73,478) (includes Lana'i outreach, \$10,000)	National Organization for Traditional Artists Exchange	\$86,600	
<b>Community Outreach</b>				<b>\$52,840</b>
	SCEP Presenting & Touring Outreach (includes public housing pilot outreach, \$2,840)	UH Outreach College/ Statewide Cultural Extension Program	\$52,840	
<b>Total</b>				<b>\$540,884</b>



# ARTS FIRST PARTNERS STRATEGIC PLAN FY2013-2018

FY2016 Report (for the period July 1, 2015 through June 30, 2016)

The Hawai'i State Legislature enacted ACT 80 in 1999 which called for Hawai'i's major stakeholders in arts education to revise the State's Fine Arts standards and develop a statewide Strategic Plan for Arts Education. In 2001, ACT 306/01 passed into law formally naming the ARTS FIRST Partners and mandating the implementation of the Strategic Plan.

## The Partners

ARTS FIRST is a network of organizations whose mission is "to work collaboratively to create the conditions and culture that promise a comprehensive high-quality arts education—learning in, about, and through the arts—for every student in Hawai'i."

ARTS FIRST Partners (AFP) include: Hawai'i Department of Education (DOE); Hawai'i Association of Independent Schools (HAIS); College of Arts and Humanities—University of Hawai'i Mānoa (CAH); College of Education—University of Hawai'i Mānoa (COE); Hawai'i State Foundation on Culture and the Arts (HSFCA); and Hawai'i Arts Alliance (Alliance). Affiliate partners are the Honolulu Theatre for Youth (HTY) and Maui Arts & Cultural Center (MACC). Representatives from the ARTS FIRST institutions meet quarterly to discuss and plan activities in alignment with the strategic plan. The Hawai'i State Foundation on Culture and the Arts is responsible for convening meetings and annual reporting.



Summer Institute 2016 Maui, held at the Maui Arts & Cultural Center, provided arts education professional development for classroom teachers. Photo: Vivien Lee

## The Strategic Plan

In July 2012 the AFP released its third multi-year strategic plan: ARTS FIRST FY2013-2018 Strategic Action Plan. The plan builds upon four objectives: **A**dvocacy, **R**esearch, **T**eacher Development, and **S**tandards for Student Learning. ARTS FIRST Partners implement the ARTS FIRST Strategic Plan Action Steps within their own institutions and in collaboration with one another for statewide impact. The Partners continue to address, with great success, the four objectives outlined in the Strategic Plan.

The ARTS FIRST Strategic Plan can be downloaded from the Hawai'i State Foundation on Culture and the Arts website at:

[http://sfca.hawaii.gov/wp-content/uploads/2013/08/ARTS\\_FIRST\\_Strategic\\_Plan\\_FY13-18.pdf](http://sfca.hawaii.gov/wp-content/uploads/2013/08/ARTS_FIRST_Strategic_Plan_FY13-18.pdf)

From FY2002 through FY2016, over \$27 million was spent in direct services for arts education in Hawai'i at an average of over \$1,860,000 each year—over \$10 invested per student per year. Partners leverage their funds by seeking grants and donations from government agencies, private foundations, businesses, and individuals. In FY16, state and county funds accounted for about 35% of the total, which was more than matched by federal and private funds.



Teaching Artists on the Artists-in-the-Schools Roster attended a two-day Teaching Artist Institute in March 2016. The second day was held at the Hawai'i State Art Museum. Photo: State Foundation on Culture and the Arts

## 2015-2016 ARTS FIRST PROGRAMS & PROJECTS

<b>KEY to acronyms</b>	Alliance = Hawai'i Arts Alliance	HCF = Hawai'i Community Foundation
	COE = University of Hawai'i at Mānoa College of Education	HMA = Honolulu Museum of Art
	CAH = University of Hawai'i at Mānoa College of Arts and Humanities	HTY = Honolulu Theatre for Youth
	DOE = Hawai'i Department of Education	MACC = Maui Arts & Cultural Center
	HAIS = Hawai'i Association of Independent Schools	PDC = Hanalei Professional Development Center
		SFCA = Hawai'i State Foundation on Culture and the Arts

### ARTS FIRST FY 2013-2018 Strategic Action Plan Goals

Partners that Implemented &/or Funded\*

Goal 1. ARTS FIRST advocacy strengthens public support, awareness, and funding of arts education.	Partners that Implemented &/or Funded*
2016 Annual Teacher Awards Dinner—Maui. 35 teachers received awards for completing 32-650 hours of professional development in arts education. 100 attended.	MACC, DOE-Maui
2015 Alfred Preis Honor awarded to Sarah Richards for her lifetime commitment to and support of arts and education in Hawai'i.	Alliance
2016 DOE Performing Arts Learning Centers Challenge Awards. \$40,000 awarded to 9 high school PALCs. The PALCS raised \$29,261 matching funds.	Alliance, DOE
Digital narratives of the FY16 Collaborative Residencies created by participating teaching artists.	HTY, SFCA
School Residency Program Tracts (brochure style documentations that include descriptions, pictures and standards connections)—produced for schools and parents.	HTY
COE faculty worked with 8 teacher candidates in the B.Ed. Statewide Teacher Education Program in Elementary Education to present arts advocacy talks to faculty in partnership schools on the islands of Kaua'i, O'ahu, Maui and Hawai'i.	COE
2016 Hawai'i Regional Scholastic Art Awards Exhibition at HiSAM for students in 7th to 12th grade. 812 students participated from 13 middle and intermediate schools, and 34 high schools.	DOE, SFCA
2016 Hawai'i Convention Center Student Art Exhibit for students in Kindergarten to 6th grade. 322 students participated from 23 elementary and middle schools.	DOE, SFCA
2016 Poetry Out Loud statewide high school poetry recitation competition. 16 schools participated. NEA Chairwoman Jane Chu spoke at the Hawai'i State Finals on February 21, 2016.	HTY, SFCA
HTY performances attended by 90,000 students statewide.	HTY
MACC performance attended by 2,973 students in the Maui school district.	MACC
Hawai'i Schools Digital Media Grants (\$500-\$2500) to 46 public and private schools for digital media video programs. \$108,500 total awarded.	HAIS, DOE
Kennedy Center presenter Deb Brzoska spoke to 125 DOE Complex Area Resource Teachers and Superintendents about arts integration.	DOE
UH-Mānoa Kennedy Theatre 'Page to Stage' school outreach program: performances, workshops, educational materials. 2,500 students.	CAH-Theater & Dance Dept.
CAH Theatre for Young Audience productions of "Gorilla" and "The Taming of the Shrew" and the Asian Theatre production of "Subali-Sugriwa: Battle of the Monkey Kings" at Kennedy Theatre reached over 5,000 DOE students. Provided educational materials for teachers, outreach activities at school sites, and pre and post show educational activities for students while at Kennedy Theatre.	CAH-Theater & Dance Dept.
CAH Theatre for Young Audience production of "The Journey Home" toured to Hawai'i schools, community centers, libraries and the Waikiki Aquarium. This production reached over 4,000 students.	CAH-Theater & Dance Dept.
CAH Theatre & Dance Dept. annual International Thespian Society Festival: workshops, scene presentations, monologue competitions and community celebration. 200 high school students.	CAH-Theater & Dance Dept.
<b>Goal 2. ARTS FIRST partners conduct and disseminate research on the scope, impact and pertinent topics of arts education in Hawai'i.</b>	
COE faculty presented at American Alliance for Theatre Education (AATE) in Boston, MA. "The Art of Questioning...An Act of Freedom."	COE
COE faculty and graduate student co-presented at American Education Research Association (AERA) in Washington, DC. "The Influence of Co-Teaching on Professional Development in Arts Integration."	COE



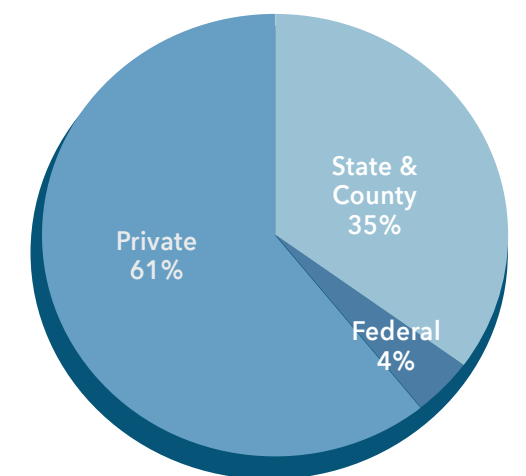
ARTS FIRST FY 2013-2018 Strategic Action Plan Goals	Partners that Implemented &/or Funded*
COE faculty and graduate student co-presented at Hawaii Education Research Association (HERA) in Honolulu, HI. "Collaboration as Professional Development in Arts Integration."	COE
COE faculty published: Simpson Steele, J. El Sistema fundamentals in practice: An examination of one public elementary school partnership in the US. <i>International Journal of Music Education</i> . Published online before print July 25, 2016, doi: 10.1177/0255761416659514.	COE
COE faculty published: Simpson Steele, J. (2016). Becoming creative practitioners: Elementary teachers tackle artful approaches to writing instruction. <i>Teaching Education</i> . 27(1), 72-87.	COE
<b>Goal 3. Pre-service teachers, in-service teachers, and teaching artists have access to ongoing and high-quality professional learning opportunities.</b>	
<b>Pre-Service &amp; In-Service Teacher Education and Degree Programs</b>	
UH Mānoa Music Dept. offered undergraduate and graduate courses in music education. 15 Music majors taught at Anuenue Elementary and Palolo Elementary schools.	CAH-Music Dept.
UH Mānoa Theatre & Dance Dept. offered undergraduate and graduate courses in drama and dance education. UH students delivered drama & dance instruction to 350 K-12 students in 10 schools, and at libraries and other community venues.	CAH-Theatre & Dance Dept.
COE offered coursework and programs in B.Ed. Elementary Education Programs (6 credits in Visual Arts and Performing Arts required), Secondary Teaching Certificate in Art Education, M.Ed. in Teaching, M.Ed. in Curriculum Studies in Art Education, and Doctoral Degree Programs.	COE
<b>Professional Development for Educators</b>	
ARTS FIRST Summer Institute 2016 for classroom teachers statewide: "Artful Thinking: Look, Infer, Wonder-Reading Images as Text" with presenters Abbey Day and Jamie Simpson Steele. 25 teachers and 1 intern attended the 3-day institute.	Alliance, DOE, COE, SFCA
MACC Summer Institutes (2) for Educators: "Integrating Portraits, Poetry, and Printmaking" with presenters Glenis Redmond and Melanie Rick. 20 secondary teachers and 23 elementary teachers attended.	MACC, SFCA, DOE-Maui
2016 Teaching Artist Institute "Finding Balance," 2-day professional development institute attended by 70 teaching artists and arts administrators statewide. Garnett Puett presented the keynote address. In partnership with PDC.	Alliance, HTY, SFCA, MACC, COE
Professional Development for teaching artists on Maui. Two workshops for 18 Teaching Artists.	MACC
2015 Schools of the Future Conference. 2-day conference for public and private school teachers focusing on learning and technology. 1,529 educators attended.	HAIS, DOE
2015 HAIS Teacher Leader Institute-2-day institute designed to help department heads, grade level leaders and team leaders understand the complexity and importance of their roles, and provide them with essential tools for effective leadership. 46 educators attended.	HAIS
Professional Development for Classroom Teachers on O'ahu-two courses: "Up Close and Wonder-Full" with presenter Quala-Lynn Young for gr.PK-12, 12 teachers, 300 students, and "Text in Motion" with presenters Daniel A. Kelin, II and Maggie Costigan for gr.K-12, 25 teachers, 625 students. In partnership with PDC.	HTY, SFCA, DOE
Professional Development for Classroom Teachers on Kaua'i: "Malama ko Aloha" with presenters Maui Ola Cook and Jamie Simpson Steele for gr.PK-2, 18 teachers, 450 students.	HTY, SFCA
Professional Development for Classroom Teachers on Hawai'i Island: "Creative Engagement, Critical Literacy" with presenter Daniel A. Kelin, II for gr.K-6, 18 teachers.	HTY, SFCA, DOE
Professional Development for Classroom Teachers on Maui: "Building the Foundation through the Arts-Year 3," seven workshops for gr.PK-2, 31 teachers. "Arts Integration Across the Curriculum," six workshops for gr.3-8, 42 teachers.	MACC, DOE-Maui
Professional Development for statewide classroom teachers: "Powerful Pathways into Common Core through Visual Arts" with Melanie Rick at Honolulu Museum of Art. 50 teachers attended.	DOE
Professional Development for K-6 classroom teachers: "Questions, Creativity and Comprehension: Drama as a Tool for Inquiry and Interpretation," with Daniel A. Kelin, II and Jamie Simpson Steele. 62 teachers attended.	DOE
UH Mānoa Music Dept. offered two Music Education workshops to the community: Kodaly Levels I & III.	CAH-Music Dept.

ARTS FIRST FY 2013-2018 Strategic Action Plan Goals	Partners that Implemented &/or Funded*
Hawai'i Music Education In-Service Conference in partnership with Hawai'i Music Educators Association.	CAH-Music Dept.
<b>Goal 4. All Hawai'i students have access to high quality formal and informal sequential arts education, which is inclusive of fine arts disciplines and enables proficiency in an art form</b>	
Turnaround Arts is a signature program of the President's Committee on the Arts and the Humanities, empowering high-need, low performing schools with innovative arts programs and arts integration strategies. In its first year, Turnaround Arts Hawai'i supported its three schools-Kalihi Kai Elementary School, Wai'anae Elementary School, and Kamaile Academy PCS-with resources and training to strategically use the arts to meet each school's goals. Our schools are 3 of 68 Turnaround Arts schools nationwide. 140 teachers and 2,036 students were served.	Alliance, DOE, SFCA, HTY, COE
Artists in the Schools Program-\$517,548 for 93 schools statewide for arts residencies. 13,885 students served. Matching funds from HCF.	SFCA, Alliance
Collaborative Residencies Project: 13 Arts-integrated residencies co-taught by classroom teacher and teaching artist teams. Ten teaching artists, 13 teachers, 400 students statewide.	HTY, SFCA
Art Bento Program @ HiSAM-a four-part museum education program for O'ahu schools, 138 classes from 16 schools, gr.2-6; 138 teachers and 3,144 students.	SFCA, Alliance
SFCA Art in Public Places-Artist in Residence Program. Four schools continued progress on their commissioned works of art. A total of 374 students participated in the educational component of the program. Eighty teachers were involved with staff orientation or the educational component of the Artist in Residence Program.	SFCA, DOE
CanDo! Days (art immersion field trip) and ArtWorks @ MACC Schaefer Int'l Gallery (guided educational tour and studio experience)-8,000 students.	MACC
Primary Players, HTY Saturday drama program, Fall/Spring, 65 students.	HTY
HTY Summer Drama Adventure/Tween Scene: Summer Drama Programs, 42 students.	HTY
On-Stage Workshops, HTY show-related workshops, 333 students.	HTY
Respect 2.0 Teen Workshops and one-day theatre and health Rally with HTY, 1,718 students.	HTY
Maui Collaboration Residencies at two Maui Schools with 150 students, 2 teachers, 2 teaching artists.	MACC, DOE-Maui
Arts Integration Collaboration: MACC teaching artists collaborate with public school teachers to integrate the arts into classroom curriculum. 8 teaching artists, 24 days, 1457 students.	MACC, DOE-Maui
"Moving Through Math" sequential lessons for 50 students at two Maui elementary schools with Marcia Daft.	MACC
"Acting Right" sequential lessons for 500 students at two Maui elementary schools with Sean Layne.	MACC

\* Each Partner seeks funding from private sources as well as from city, state and federal government sources. The private sources are too numerous to name, but primary among them is the Hawaii Community Foundation.

### ARTS FIRST PARTNERS REVENUES FY 2016

Funds	Amount	Percent
State & County	\$744,575	35%
Federal	\$90,125	4%
Private	\$1,291,742	61%
<b>TOTAL FUNDS</b>	<b>\$2,126,442</b>	<b>100%</b>





# FINANCIAL SUMMARY

Department of Accounting and General Services, State of Hawai'i

Fiscal Year Ending June 30, 2016

## REVENUES

### STATE

Executive Allotment.....	\$1,230,640.00
Operating (includes Program Grants).....	\$955,640.00
Grants-in-Aid.....	\$275,000.00
Works of Art Special Fund Allotment Ceiling.....	\$4,350,423.00
Works of Art Capital Improvement Project Fund.....	\$33,566.28
<b>Subtotal.....</b>	<b>\$5,614,629.28</b>

### FEDERAL

National Endowment for the Arts.....	\$669,400.00
Other Federal Funds.....	\$6,223.00
<b>Subtotal.....</b>	<b>\$675,623.00</b>

### PRIVATE CONTRIBUTIONS

Carryover from previous year.....	\$269,173.72
Hawai'i State Art Museum Facility Rental.....	\$50,853.37
Investment Pool Earnings/pCard Rebate.....	\$723.43
<b>Subtotal.....</b>	<b>\$320,750.52</b>

<b>TOTAL REVENUES.....</b>	<b>\$6,611,002.80</b>
----------------------------	-----------------------





## EXPENSES

<b>HSFCA ADMINISTRATION</b> .....	<b>\$506,672.84</b>
Personnel .....	\$430,516.62
Operating .....	\$76,156.22
<b>PROGRAM GRANTS</b> .....	<b>\$1,296,678.00</b>
State .....	\$839,138.00
State Legislative Grants-In-Aid .....	\$261,250.00
Federal—National Endowment for the Arts .....	\$196,290.00
Basic State Plan .....	\$42,790.00
Arts in Education Grant .....	\$34,000.00
Arts in Underserved Communities .....	\$72,000.00
Poetry Out Loud .....	\$17,500.00
Folk Arts Partnership .....	\$30,000.00
<b>ART IN PUBLIC PLACES PROGRAM (See page 8)</b> .....	<b>\$3,292,513.71</b>
<b>DESIGNATED PROGRAMS</b> .....	<b>\$11,683.36</b>
Operating .....	\$11,683.36
<b>PRIVATE CONTRIBUTIONS</b> .....	<b>\$91,101.47</b>
Hawai'i State Art Museum Facility Maintenance .....	\$91,101.47
<b>TOTAL EXPENSES</b> .....	<b>\$5,198,649.38</b>

## EXCESS OF REVENUE OVER EXPENSES

### STATE

General Fund Lapsed (includes 5% restriction) .....	\$47,763.57
Grants-in-Aid Lapsed (includes 5% restriction) .....	\$13,750.00
Works of Art Special Fund Reversion .....	\$1,057,909.29
Works of Art Capital Improvement Project Fund .....	\$33,566.28

(carryover from previous year, fund established prior to Works of Art Special Fund)

### FEDERAL

National Endowment for the Arts Reversion (ceiling difference) .....	\$28,220.27
Other Federal Funds .....	\$1,494.96

<b>PRIVATE CONTRIBUTIONS</b> .....	<b>\$229,649.05</b>
------------------------------------	---------------------

Carryover from previous year .....

Investment Pool Earnings/pCard Rebate .....

<b>TOTAL REVENUES OVER EXPENSES</b> .....	<b>\$1,412,353.42</b>
---	-----------------------



Department of Accounting and General Services  
 STATE FOUNDATION ON CULTURE AND THE ARTS (SFCA)  
 250 South Hotel Street • Second Floor • Honolulu, Hawai'i 96813  
 Website: <http://sfca.hawaii.gov> • Phone: (808)586-0300

### COMMISSION AND STAFF July 1, 2015–June 30, 2016

#### Commission

Patricia Hamamoto,  
*Chairperson, At-Large*

Jane Clement, *Hawai'i County*

Joel Guy, *Kaua'i County*

Michael Moore, *Maui County*

Karen Tiller Polivka, *At-Large*

Dean Sakamoto, *At-Large*

Sherman Warner, *At-Large*

Eva Rose Washburn-Repollo, *City & County of Honolulu*

**Department of Accounting and General Services**

Douglas Murdock, *Comptroller*

Audrey Hidano, *Deputy Comptroller*

#### Staff

**EXECUTIVE DIRECTOR**

Jonathan Johnson,  
*Executive Director*

Henny Saraswati, *Secretary*

**SUPPORT SERVICES**

Mamiko K. Carroll, *Office Assistant*

Estelle Enoki, *Administrative Services Assistant (retired December 31, 2015)*

James Gonser, *Information Specialist (through March 2, 2016)*

Steven Mewha, *Administrative Services Assistant (from May 23, 2016)*

Susan Naanos, *Accountant*

Kam Wen Siu, *Account Clerk*

**DESIGNATED PROGRAMS**

Vivien Lee, *Arts Program Specialist*

Charles Medeiros, *Arts Program Specialist*

Denise Miyahana, *Arts Program Specialist*

**ART IN PUBLIC PLACES**

Karen Ewald, *APP Manager*

Wanda Anae-Onishi, *Collections Manager*

Eli Baxter, *Exhibit Specialist/Curator*

Derek Erwin, *Exhibit Specialist*

Gideon Gerlt, *Conservation Coordinator*

Susan M. Hogan, *Museum Educator*

Ozzie Kotani, *Registrar*

James Kuroda, *Senior Exhibit Specialist (through January 11, 2016)*

N. Trisha Lagaso Goldberg, *Project Manager*

Richard Louie, *Exhibit Specialist/Senior Exhibit Specialist*

Kelly Thune, *RWA Curator (through November 17, 2015)*

Scott M. Young, *Visitor Services Manager*

**FY 2015-2016 ANNUAL REPORT**

Mamiko K. Carroll, *editor*

Kathleen Sato, *designer*

Hagadone Inc., *printer*



Kaupo Ridge by Zach Pezzillo, photograph. Photo: Paul T. Hayashi





**HAWAII**  
STATE FOUNDATION on  
CULTURE and the ARTS

No. 1 Capitol District Building • 250 South Hotel Street, Second Floor • Honolulu, Hawai'i 96813  
Ph (808)586-0300 • Fx 808/586-0308 • <http://sfca.hawaii.gov/>