

House District 44
Senate District 21

THE TWENTY-NINTH LEGISLATURE
APPLICATION FOR GRANTS
CHAPTER 42F, HAWAII REVISED STATUTES

Log No: _____
For Legislature's Use Only

Type of Grant Request

GRANT REQUEST - OPERATING GRANT REQUEST - CAPITAL

"Grant" means an award of state funds by the legislature, by an appropriation to a specified recipient, to support the activities of the recipient and permit the community to benefit from those activities

"Recipient" means any organization or person receiving a grant

STATE DEPARTMENT OR AGENCY RELATED TO THIS REQUEST (LEAVE BLANK IF UNKNOWN):

Department of Health
STATE PROGRAM I.D. NO. (LEAVE BLANK IF UNKNOWN): _____

1. APPLICANT INFORMATION:

Legal Name of Requesting Organization or Individual:
Waianae District Comprehensive Health and Hospital Board, Incorporated
Dba
Waianae Coast Comprehensive Health Center
Street Address
86-260 Farrington Highway Waianae HI 96792
Mailing Address:
86-260 Farrington Highway Waianae HI 96792

2. CONTACT PERSON FOR MATTERS INVOLVING THIS APPLICATION:

Name Richard P. Bettini
Title President and Chief Executive Officer
Phone # (808) 697-3457
Fax # (808) 697-3687
E-mail wcchc@wcchc.com

3. TYPE OF BUSINESS ENTITY:

- NON PROFIT CORPORATION INCORPORATED IN HAWAII
- FOR PROFIT CORPORATION INCORPORATED IN HAWAII
- LIMITED LIABILITY COMPANY
- SOLE PROPRIETORSHIP/INDIVIDUAL
- OTHER

6. DESCRIPTIVE TITLE OF APPLICANT'S REQUEST:

24-Hour Emergency Room Services

4. FEDERAL TAX ID #: [REDACTED]

5. STATE TAX ID #: [REDACTED]

7. AMOUNT OF STATE FUNDS REQUESTED:

FISCAL YEAR 2018 \$ 1,900,000

8. STATUS OF SERVICE DESCRIBED IN THIS REQUEST:

- NEW SERVICE (PRESENTLY DOES NOT EXIST)
- EXISTING SERVICE (PRESENTLY IN OPERATION)

SPECIFY THE AMOUNT BY SOURCES OF FUNDS AVAILABLE
AT THE TIME OF THIS REQUEST:

STATE \$ 1,900,000
FEDERAL \$ _____
COUNTY \$ _____
PRIVATE/OTHER \$ _____

NAME AND TITLE OF AUTHORIZED REPRESENTATIVE

[REDACTED]

Richard P. Bettini, President and Chief Executive Officer

NAME & TITLE

1/20/2017

DATE SIGNED



RECEIVED

1/20/17 *ma*

ATTACHMENT A:

APPLICATION

Application for Grants

If any item is not applicable to the request, the applicant should enter "not applicable".

I. Background and Summary

1. Description of Applicant's Background

The Waianae Coast Comprehensive Health Center (Health Center), established in 1972, first opened its doors with one doctor and five staff. This year, the Health Center celebrates its 45th anniversary as the oldest and largest of 14 community health centers in the state and the largest employer on the Waianae coast. The Health Center currently employs 662 staff that work throughout its main center in Waianae, four satellite clinics (located in Kapolei, Nanakuli, Waianae, and Waipahu), a school-based dental clinic and two school-based primary care clinics in Waianae, two adult day care centers (located in Pearl City and Mililani) and various other business and program sites throughout Leeward Oahu.

The Waianae Coast Comprehensive Health Center is proud of its mission: "The Health Center is a healing center that provides accessible and affordable medical and traditional healing services with Aloha. The Health Center is a learning center that offers health career training to ensure a better future for our community. The Health Center is an innovator, using leading edge technology to deliver the highest quality of medical services to our community."

The Health Center achieves its mission by not only serving patients who seek services, but also by incorporating the goal of improving the overall health status of the community it serves. Programs and services are designed around an integrated model of care in which the Health Center serves as a patient-centered medical home (PCMH). Its Native Hawaiian Healing Center promotes Native Hawaiian healing and cultural education, practices and traditions including ho'oponopono (conflict resolution) and la'au lapa'au (herbal medicine).

The Health Center is the only health safety-net provider serving the medically underserved living in Leeward Oahu. In 2015, the Health Center served 34,921 patients, the majority being Native Hawaiian (45%), followed by Asian & other Pacific Islanders (24%), and Caucasians (14%). Data shows 70% of patients are at 100% of the federal poverty level or below, 9% are uninsured, and 59% are receiving coverage under QUEST, the State of Hawaii's Medicaid program. Of the total patients served, 1,324 are identified as being homeless.

The Health Center's services include: primary medical care; 24-hour emergency, laboratory and radiology services; mental health and substance abuse treatment;

dental; specialty services; adult day care; nutrition counseling; health professional training; health career training; case management; transportation, and more. In addition to its wide range of medical care facilities, the Health Center also offers a wide range of programs that increase physical activity, health, and well-being in its community. These programs include a state-of-the-art exercise and fitness gym, scenic walking paths throughout its main campus, multiple farmers' markets stretched throughout Leeward Oahu, a Native Hawaiian Healing Center, an annual 5k run/walk, homeless outreach, and numerous community-related activities.

Although emergency medical services are outside the normal scope of the mission of federally-qualified health centers around the nation, it is evident that providing 24-hour emergency medical services at the Health Center is crucial to the overall health of Oahu's west coast community. The State Legislature/Department of Health has funded the Health Center's emergency department since 1976. The Health Center's emergency services began 24-hour operations in 1986.

2. Goals and Objectives Related to the Request

The Waianae Coast Comprehensive Health Center is requesting \$1.9 million over the fiscal period from 2017 – 2018 to subsidize the operation of its 24-hour emergency room from the hours of midnight to 8:00am. Currently, the Health Center operates the only 24-hour emergency facility on the Waianae Coast. It is one of the most heavily utilized emergency facilities on the island, serving 13,500 patients through a total of 24,000 visits in 2015-2016.

The Health Center's emergency room is at risk of discontinuing its midnight to morning operation due to a cease in funding from the Hawai'i Tobacco Settlement-Community Health Center Special Funds. The lack of emergency services during these hours will severely impact the Waianae community that is already determined to be medically underserved and is characterized by increased homelessness, behavioral and mental health issues, economic hardship, and drug and alcohol abuse issues that have resulted in trauma caused by violence.

Currently, the Health Center's emergency room is the only facility that can provide urgent care to trauma patients in Waianae. The secondary option of Queen's West is located approximately 30-40 minutes away, depending on traffic conditions. The length of the commute to the next nearest emergency care could cause life-threatening circumstances. Isolated by one road leading into and out of Waianae, natural disasters and road closures could also completely block access to outside services.

3. Public Purpose and Need to be Served

The Health Center provides a range of health services that are not duplicated by any other Leeward Coast community health care provider. The majority of

emergency room visits are for conditions related to asthma, upper respiratory infection, complications from insulin-dependent diabetes, and cardiovascular conditions, such as chest pains and heart attacks, threatened labor, and trauma injuries and wounds. The 30-40-minute commute to the next closest emergency room can be a matter of life and death.

The necessity for 24-hour emergency medical services on the Waianae Coast has always existed. Waianae continues to be effected by isolating events such as traffic accidents, fallen telephone poles, or other issues that close off roundtrip access.

During medical emergencies, such as national crisis or disaster, or other occurrences that require immediate and urgent emergency services, the Health Center is the only medical facility within an accessible radius that is available and sufficiently equipped to be responsive. Furthermore, the Health Center's central location in the isolated town of Waianae, identifies its substantial role as part of the statewide Emergency Medical System (EMS).

The Health Center's emergency room is also used by the Honolulu Police Department (HPD) and Child Protective Services (CPS). The HPD brings in individuals who are in custody to the emergency room for medical care. The CPS uses the emergency room for pre-placement physical exams when children have been removed from the care of their parents or guardians. If the Honolulu Police Department had to transport individuals in their custody to Queens Medical Center – West Oahu (the second nearest emergency facility), or another heavily-utilized emergency facility, police protection in the community would decline during their commute.

In recent years, when funding for the emergency room was threatened due to state budget cuts, the community adamantly spoke up, declaring that emergency services on the Waianae Coast was a necessity. Stated concerns included:

- Due to economic and transportation limitations, access to medical care is a major barrier for Waianae Coast residents.
- The next closest emergency room (The Queen's Medical Center – West Oahu) is located 16 miles from Waianae and 20 miles from Makaha (approximately 30-40-minute commute time)
- The emergency room at the Queen's Medical Center – West Oahu serves a large and rapidly growing service area of its own, including, but not limited to, Kapolei, Ewa, Ewa Beach, Waipahu, Makakilo, Ko Olina, and Kunia. The wait time for emergency care can be discouragingly and dangerously long.
- With only two ambulances serving the Waianae community of upwards of 50,000, the likelihood of a wait time of 40 minutes for an ambulance when the units are on call is unacceptable.

The Health Center's 24-hour emergency services, which are centrally located in Waianae, address the issues of isolation that would otherwise severely threaten the health of the community. Factors that impede the flow of traffic, such as natural disasters and infrastructural road closures, limit access to health care, particularly emergent health care. Trauma injuries require immediate attention to avoid further hospitalization. Oftentimes, delayed response can increase the severity of the injury and therefore the cost of medical bills, which is usually at the state's expense.

The Health Center's emergency room is one of the most heavily utilized on Oahu, serving 13,332 patients through a total of 23,589 visits in 2015-2016. Of the total visits, 3,561 (15%) occurred between midnight and 8:00am—Of patients using the emergency room from midnight to 8:00am, 61% were covered under Medicaid/QUEST; 8% were covered under Medicare and 6% were uninsured. The most urgent of pathologies seen during midnight to 8:00am in 2015-2016 include the following: Chest Pain/Congestive Heart Failure (174 patients); Labor (15 patients); Mental Illness/Substance Abuse (87 patients); Respiratory Distress (327 patients); Severe Signs/Symptoms (639 patients); Trauma (202 patients).

There are many factors that contribute to the inability of the emergency room to support itself financially:

- The Health Center's emergency room serves a low-income, uninsured, or underinsured population. The economic base of the community is not able to support such services on a fee-for-service basis. The Health Center must absorb the cost of uninsured and underinsured patients.
- Health plans rarely reimburse the Health Center at the same rate as hospital-based emergency rooms.
- The State's uninsured funding is specifically for uninsured primary care visits and does not cover uninsured emergency room visits.
- The Health Center is prohibited under Federal policy to direct any of its Federal community health center grant funding to support emergency room services since it is not considered a core service of community health centers
- The Federal Centers for Medicare and Medicaid Services reimbursement policy does not recognize a free-standing, non-hospital emergency room, therefore, reimbursement levels are not equivalent to hospital-based emergency rooms. Consequently, reimbursements do not cover the high cost of providing 24-hour emergency services

Without funding, the Health Center will be faced with eliminating overnight emergency, lab and radiology services, from midnight to 8:00am. These hours are integral to a community stricken with violence, drugs, and mental health issues. If these hours are eliminated from the Health Center's emergency services, Waianae residents will be vulnerable to life-threatening, health

circumstances. The Health Center requires on-going support to continue its operations as an emergency and primary care center in the heart of Waianae and to continue to provide services to those who lack health insurance or are underinsured and require emergency medical services.

The Waianae Coast Comprehensive Health Center requires \$1.9 million minimally to operate its emergency services between the hours of midnight and 8:00am for 365 days per year. The legislature has funded the Health Center's ability to remain open 24-hours at various levels between the periods of 1986 – 2007 and from 2008 to current, having set their annual funding levels at \$1,468,000. At current, the Health Center is under contract with the Department of Health for its emergency medical services for the period of July 1, 2016 through June 30, 2020 at the same funding level of \$1,468,000 annually.

The purpose of this grant is to assist the Health Center in continuing 24-hour per day emergency room services 365-days per year to the residents of the Waianae Coast in need of emergency treatment.

It is through annual state subsidy that the Health Center has been able to sustain 24-hour access to emergency services for patients on the Waianae Coast who are in need of immediate care. Without the subsidy, the Health Center, and subsequently the Waianae Coast community, will operate at a substantial loss. When impacted by budget constraints, the Health Center is faced with crucial decisions regarding the closure or limitation of services that are indispensable when factoring in population size, population growth, and current usage of emergency medical services. Furthermore, limiting the Health Center's capacity to provide all-access emergency care 24-hours a day will greatly affect the Health Center's responsiveness in the event of a natural disaster, bio-terrorism, and pandemic or mass casualty episode.

Since 2008, the Health Center's subsidy to support emergency medical services has been provided through the Hawaii Tobacco Settlement-Community Health Center Special Funds. A State Auditors report in December 2015 identified that the Hawai'i Tobacco Settlement-Community Health Center Special Funds: 1) did not provide a clear nexus between benefits sought and user charges or a clear link between program and revenue sources and 2) can operate under the general fund appropriation process.

Subsidy funding allows the Health Center to support the difference between fees collected from services rendered and the actual cost of providing services. Funding supports uninsured visits, staffing of the emergency room, lab, radiology, and security services, as well as other operational costs related to providing emergency medical services between the hours of midnight and 8:00am, 365 days a year.

4. Target Population to be Served

The Health Center serves approximately 35,000 patients annually through its main center in Waianae, satellite clinics in Waianae, Nanakuli, Kapolei and Waipahu, and its two school-based sites in Waianae. The majority of these patients are Native Hawaiian (45%), followed by Asian & Pacific Islanders (24%). Of these patients, 70% are within the income constraints defined by the federal poverty level or below, 9% are uninsured, and 59% are receiving coverage under QUEST, the State of Hawai'i's Medicaid program.

The majority of emergency room visits are made by Waianae residents (90%), while 10% of patients are self-reported as tourists or non-Waianae residents either working in the local community or taking part in recreational activities, such as fishing, hunting, diving, swimming, boating or surfing. The use of the emergency room by Waianae residents increases to 92% during the hours of midnight to 8:00am. Local residents, as well as the greater community and visitors to Waianae, are able to access much-needed services through the emergency room. The majority of the patients currently served by the Health Center's emergency room have multiple chronic conditions and are in need of care required for late stages of various illnesses. Drug use is also a major problem in the community and it is one of the root causes to many of the emergency room visits.

Behavioral health services are also needed in the emergency room to deal with episodes of acute substance abuse toxicity and mental health holding status patients who are awaiting acute psychiatric evaluation and admission to a psychiatric care facility. Abuse and criminal behavior leads to the community's need for a 24-hour emergency room to act as a clearinghouse for CPS and HPD evaluations. Statistics show that at least two out of three primary care or emergency room visits have a behavioral health component that requires immediate attention. Through demonstrative need, psychologists are also employed as part of the emergency medical team at the Health Center's emergency room.

5. Geographic Coverage

As the primary medical provider on the Waianae Coast, the Health Center continues to fill a major role in providing health services to the community. This allows the State to focus its limited resources in other areas. Challenged by today's healthcare market, the Health Center is impacted by a community that continues to experience major erosion to its economic base and overall well-being. Increased homelessness, economic conditions and behavioral health conditions have increased the demand for emergency medical services on the Waianae coast, and the Health Center continues to be the safety net for uninsured and medically underserved patients.

Since the 1970's, there have been ongoing efforts by the community to secure and maintain a 24-hour emergency medical services for residents of the Waianae coast. Every patient-marketing study conducted by the Health Center has listed that the availability of 24-hour emergency medical services is of the highest concern. Without emergency services, particularly during evening to morning hours, the Waianae community is left without access to emergency medical care.

The population of the Waianae coast, per the 2010 census, is 48,519; however, with the rapid development of Hawaiian Homestead lots, low-income housing units and private development, the population is forecasted to continue to grow. By the year 2030, the state estimates growth of the Waianae Coast to swell to a population of 51,000. This will continue to put an even greater strain on Waianae's already existing traffic issues.

II. Service Summary and Outcomes

1/2. Scope of Work, Tasks and Responsibilities and Projected Annual Timeline for Accomplishing Results

Since the request is for continued funding of services that are already in place, the scope of work, tasks and responsibilities, and results would be continuous and effective immediately.

3. Quality Assurance and Evaluation Plans

The Health Center has an active and robust quality improvement program. Quality and performance improvement activities of the Health Center represent an integrated multidisciplinary effort by all of its employees, including:

Medical providers, clinical and non-clinical management, mid-management, and program managers are active in addressing quality management components at the Health Center through the following committees: Peer Review Committee; Quality Improvement Committee; Recruitment Committee; Family Practice, Pediatrics and Women's Health Specialty Committees; Disaster Preparedness Committee; Clinic Office Managers; Health and Safety Committee; Clinical Leadership Team; and the Leadership Team

Improvement of the overall organization is addressed through the Quality Improvement Committee, the Leadership Team, the Clinical Leadership Team and the Board of Directors.

4. Measure(s) of Effectiveness

The effectiveness of this project will be measured by continuity of emergent care provided to Waianae residents.

III. Financial

Budget

1. Budget

See Attachment B: Budget Request by Source of Funds; Personnel Salaries and Wages (also included is a 1) Budget Justification / Personnel: Payroll Taxes, Assessments, and Fringe Benefits form and 2) Budget Justification / Contractual Services – Administration form); *Equipment and Motor Vehicles; *Budget Justification – Capital Project Details; Government Contracts and/or Grants

*These sheets are not applicable to the Health Center’s request for funding.

2. Anticipated Quarterly Funding Requests for the Fiscal Year 2017 - 2018

Quarter 1	Quarter 2	Quarter 3	Quarter 4	Total Grant
\$475,000	\$475,000	\$475,000	\$475,000	\$1,900,000

3. Other Sources of Funding

The Health Center will be utilizing its own financial resources and emergency revenue to cover any remaining costs to keep the emergency room open.

4. State and Federal Tax Credits

The Health Center has not received any previous federal tax credits, but is in the process of looking into federal tax credits that can be applied to future capital projects.

5. Federal, State, and County Government Contracts and Grants

The Health Center has been able to secure various grants and successfully raise capital for improvements and expansion of the center and its programs and services. The legislature has supported \$6,250,000 in capital funding for a new Emergency Medical Services building at the Health Center that will be completed in Fall 2017.

6. Balance of Unrestricted Current Assets as of December 31, 2016

The Health Center has not closed its books for the month of December 2016 as of January 18, 2017. As of November 30, 2016, the Health Center had a total unrestricted net assets balance of \$51.1 million, consisting of \$40.4 million in fixed assets (i.e., physical plants and equipment), \$7.5 million restriction for construction and \$3.2 million cash on hand to fund its daily operations. The

Health Resources and Services Administration (HRSA) -- the federal cognizant agency that has oversight on the community health center program -- expects a health center to have two months' worth of cash on hand for operations. By this standard and based on our annual operating budget of \$65 million for this fiscal year, the Health Center is expected to have \$10.8 million cash on hand for operations. As of November 2016, the Health Center was \$7.6 million shy of the \$10.8 million requirement in terms of net assets available for operations.

IV. Experience and Capability

A. Necessary Skills and Experience

The Health Center is a non-profit community health center that has served the community for 45 years. The growth of both the physical and program aspects of the Health Center over the past 45 years demonstrates the Health Center's experience and ability to plan and manage financial resources and capital development activities. The Health Center has been ranked as one of the top three largest community service providers in the state for many years (Pacific Business News), managing an annual budget of over \$60 million.

The Health Center is the only medical facility within an accessible radius that is available and sufficiently equipped to be responsive in the event of a national crisis, a natural disaster, or other occurrences that require immediate and urgent emergency services. The Health Center's emergency facility has been the sole provider of emergent care on the Waianae coast since 1976. Today, the Health Center is the only free-standing emergency room in the State of Hawai'i and is one of two community health centers in the entire U.S. with the designation for emergency capability. The Health Center's central location in the isolated town of Waianae, identifies its substantial role as part of the statewide Emergency Medical System (EMS).

With recognition by the State of Hawaii as a Trauma Support Facility, the Health Center serves as a safety net for the residents of the Waianae Coast and its participation in the statewide EMS is considered "crucial." Emergency department staff and administrative staff are active members in the Health Care Association of Hawai'i, regularly updating and coordinating with other hospitals and members for disaster preparedness.

The Health Center's emergency room is disaster-ready due to the fact that:

- It is connected to the Emergency Management computer that connects all of Hawaii hospitals within the statewide Emergency Medical System (EMS)
- It has mass casualty/disaster gear issued to us through the Health Care Association

- It has a command structure in place in case of a disaster (i.e. phone roster, hand-held radios, mass casualty triage area)

B. Facilities

The Health Center operates out of a main center in Waianae, four satellite clinics located in Kapolei, Nanakuli, Waianae, and Waipahu, a school-based dental site, two school-based primary care sites, two adult day care centers and various other business and program sites.

The Health Center's 16-plus acre main campus is situated on state and Department of Hawaiian Home Land parcels centrally located on the Waianae Coast. Permanent structures have been constructed or renovated through funding support from the state, city, federal government and private foundations. The main upper campus is located on state land managed by the Department of Land and Natural Resources.

The current 24- hour emergency room is located on the main upper campus along with primary care clinics, a specialty clinic, a dental clinic, radiology and laboratory, a pharmacy, case management and outreach services, a dining facility, the Native Hawaiian Healing Center, and administrative and information technology functions.

V. Personnel: Project Organization and Staffing

A. Proposed Staffing, Staff Qualifications, Supervision and Training

Proposed staffing includes: Emergency Department Technicians; Registered Nurses; Medical Receptionists; Physicians; and Physician's Assistants (refer to Budget, pages 2-4, Budget Justification: Personnel – Salaries and Wages). All clinical staff are credentialed and supervision and training is a part of all management positions at the Health Center.

Job descriptions and credentials can be provided if necessary.

B. Organization Chart

See Attachment C: Organization Chart.

C. Compensation

The three highest-paid employees of the organization, and their annual salary, are as follows:

Position	Salary
President/Chief Executive Officer	\$282,124.00
Emergency Department Director	\$239,200.00
Chief of Behavioral Health Sciences	\$233,729.00

VI. Other

A. Litigation

The Waianae Coast Comprehensive Health Center does not have any pending litigations, nor outstanding judgments against the agency.

B. Licensure or Accreditation

There is no specific licensure or accreditation required to operate the Health Center's emergency services.

C. Private Educational Institutions

The grant request is to support continued 24-hour services for the Health Center's emergency room. The Health Center is a federally qualified community health center. Funding will not support or benefit a sectarian or non-sectarian private education institution.

D. Future Sustainability Plan

The Waianae Coast Comprehensive Health Center (Health Center) is requesting \$1.9 million over the fiscal period from 2017 – 2018 to subsidize the operation of its 24-hour emergency room from the hours of midnight to 8:00am. Currently, the Health Center operates the only 24-hour emergency facility on the Waianae Coast. It is one of the most heavily utilized emergency facilities on the island, serving 13,500 patients through a total of 24,000 visits in 2015-2016. Patient revenue, and federal, state and private funding will continue to sustain the emergency room.

E. Certificate of Good Standing

See Attachment D: Certificate of Good Standing.

OTHER

See Attachment E: Declaration Statement

ATTACHMENT B:

BUDGET

BUDGET REQUEST BY SOURCE OF FUNDS

Period: July 1, 2017 to June 30, 2018

Applicant/Provider: Waianae District Comprehensive Health and Hospital Board, Inc.
 dba Waianae Coast Comprehensive Health Center

BUDGET CATEGORIES	State Funds (a)	Other Funds (b)	Total Program Budget (c)	(d)
A. PERSONNEL COST				
1. Salaries	833,433	3,500,602	4,334,035	
2. Payroll Taxes & Assessments	80,426	345,463	425,889	
3. Fringe Benefits	100,846	389,366	490,212	
TOTAL PERSONNEL COST	1,014,705	4,235,431	5,250,136	
B. OTHER CURRENT EXPENSES				
1. Airfare, Inter-Island	0	0	0	
2. Airfare, Out-of-State	0	0	0	
3. Audit Services	0	0	0	
4. Contractual Services - Administrative	227,702	941,323	1,169,025	
5. Contractual Services - Subcontracts	0	0	0	
6. Insurance	1,914	7,875	9,789	
7. Lease/Rental of Equipment	117	479	596	
8. Lease/Rental of Motor Vehicle	0	0	0	
9. Lease/Rental of Space	0	0	0	
10. Mileage	0	0	0	
11. Postage, Freight & Delivery	8	31	39	
12. Publication & Printing	141	578	719	
13. Repair & Maintenance	5,208	21,429	26,637	
14. Staff Training	1,391	5,724	7,115	
15. Substance/Per Diem	0	0	0	
16. Supplies	105,926	435,895	541,821	
17. Telecommunication	599	2,464	3,063	
18. Transportation	107	441	548	
19. Utilities	12,366	50,886	63,252	
20. Facilities Allocation	89,777	369,438	459,215	
21. Patient Service Support Costs	159,817	657,736	817,553	
22. Finance & Admin Allocation	280,222	1,164,243	1,444,465	
23. Other	0	81,332	81,332	
TOTAL OTHER CURRENT EXPENSES	885,295	3,739,874	4,625,169	
C. EQUIPMENT PURCHASES				
D. MOTOR VEHICLE PURCHASES				
TOTAL (A+B+C+D)	1,900,000	7,975,305	9,875,305	
SOURCES OF FUNDING		Budget Prepared By: Ajan Lee-Levins 697-3129 Name (Please type or print) _____ Phone _____ Signature of Authorized Official _____ Date <u>1/24/17</u> James Z. Chen, CFO Name and Title (Please type or print) _____		
(a) State Funds	1,900,000			
(b) Other Funds	7,975,305			
(c)				
(d)				
TOTAL REVENUE	9,875,305	For State Agency Use Only Signature of Reviewer _____ Date _____		

**BUDGET JUSTIFICATION
PERSONNEL - SALARIES AND WAGES**

Applicant/Provider: Waianae District Comprehensive Health and Hospital Board, Inc. Date Prepared: 1/19/2017
 RFP No.: _____ Period: 07/01/2017 to 06/30/2018
 Contract No.: _____ 0

POSITION NO.	POSITION TITLE	FULL TIME EQUIVALENT TO ORGANIZATION	ANNUAL SALARY INCLUDING BUDGETED SALARY INCREASE A	% OF TIME BUDGETED TO THE CONTRACT B	TOTAL SALARY BUDGETED TO THE CONTRACT A x B
1116	Emergency Dept Tech III	1.00	43,826	19.55%	8,568
1576	Registered Nurse - ED Assistant Manager	1.00	111,550	19.55%	21,808
1700	Emergency Dept Tech III	1.00	45,822	19.55%	8,958
1716	Registered Nurse - ED	0.20	21,062	19.55%	4,118
1717	Registered Nurse - ED	1.00	101,150	19.55%	19,775
1734	Medical Receptionist	1.00	35,173	19.55%	6,876
1789	ED Medical Receptionist Supervisor	1.00	52,499	19.55%	10,264
2221	Registered Nurse - ED	1.00	101,150	19.55%	19,775
2262	Registered Nurse - ED Manager	1.00	115,710	19.55%	22,621
2300	Registered Nurse - ED	1.00	101,150	19.55%	19,775
2368	Registered Nurse - ED	0.20	21,062	19.55%	4,118
2380	Registered Nurse - ED	0.20	21,062	19.55%	4,118
2461	Medical Receptionist	1.00	27,539	19.55%	5,384
2472	Medical Receptionist	1.00	33,946	19.55%	6,636
2481	Registered Nurse - ED	1.00	101,150	19.55%	19,775
2551	Emergency Dept Tech III	1.00	43,971	19.55%	8,596
2578	Registered Nurse - ED	0.90	91,035	19.55%	17,797
2587	Registered Nurse - ED	0.20	21,062	19.55%	4,118
2590	Registered Nurse - ED	0.20	19,198	19.55%	3,753
2615	Registered Nurse - ED	0.20	20,230	19.55%	3,955
2652	Registered Nurse - ED	1.00	101,150	19.55%	19,775
2683	Emergency Dept Tech III	0.90	41,465	19.55%	8,106
2937	Registered Nurse - ED	0.60	60,690	19.55%	11,865
2995	Registered Nurse - ED	1.00	101,150	19.55%	19,775
3001	Medical Receptionist	1.00	34,882	19.55%	6,819
3028	Medical Receptionist	1.00	30,638	19.55%	5,990
3094	Emergency Dept Tech III	0.20	8,320	19.55%	1,627
3103	Emergency Dept Tech III	1.00	44,491	19.55%	8,698
3172	Emergency Dept Tech II	0.20	8,528	19.55%	1,667
3173	Registered Nurse - ED	0.20	19,198	19.55%	3,753
3187	Emergency Dept Tech II	0.90	44,741	19.55%	8,747
3278	Medical Receptionist	1.00	28,142	19.55%	5,502

**BUDGET JUSTIFICATION
PERSONNEL - SALARIES AND WAGES**

3334	Registered Nurse - ED	1.00	101,150	19.55%	19,775
3352	Emergency Dept Tech III	0.20	8,528	19.55%	1,667
3453	Registered Nurse - ED	0.20	21,062	19.55%	4,118
3570	Registered Nurse - ED	0.20	19,198	19.55%	3,753
3616	Registered Nurse - ED	0.20	21,062	19.55%	4,118
3753	Registered Nurse - ED	0.20	21,062	19.55%	4,118
3775	Registered Nurse - ED	0.20	17,534	19.55%	3,428
3776	Registered Nurse - ED	1.00	101,150	19.55%	19,775
3795	Registered Nurse - ED	0.90	91,035	19.55%	17,797
3810	Registered Nurse - ED	0.20	21,062	19.55%	4,118
3824	Registered Nurse - ED	0.20	19,198	19.55%	3,753
3834	Registered Nurse - ED	0.90	81,395	19.55%	15,913
3837	Registered Nurse - ED	1.00	101,150	19.55%	19,775
3845	Emergency Dept Tech I	0.20	7,696	19.55%	1,505
3872	Registered Nurse - ED	1.00	90,438	19.55%	17,681
3873	Emergency Dept Tech I	0.20	8,528	19.55%	1,667
3920	Medical Receptionist	1.00	23,338	19.55%	4,563
3934	Registered Nurse - ED	0.20	21,062	19.55%	4,118
3985	Registered Nurse - ED	0.90	91,035	19.55%	17,797
4003	Registered Nurse - ED	1.00	72,800	19.55%	14,232
4042	Registered Nurse	0.20	19,398	19.55%	3,792
1087	MD ED Physician - ED Assistant Director	1.00	226,512	19.55%	44,283
2515	MD ED Physician	1.00	222,144	19.55%	43,429
2538	MD ED Physician - ED Director	1.00	239,200	19.55%	46,764
3229	MD ED Physician	0.20	56,160	19.55%	10,979
3328	MD ED Physician	0.20	55,536	19.55%	10,857
3508	MD ED Physician	1.00	225,264	19.55%	44,039
3681	MD ED Physician	0.20	55,120	19.55%	10,776
3886	MD ED Physician	0.20	56,784	19.55%	11,101
3912	MD ED Physician	0.20	54,080	19.55%	10,573
3977	MD ED Physician	0.20	54,080	19.55%	10,573
1015	ED Physician Assistant	1.00	124,095	19.55%	24,261
2319	ED Physician Assistant	0.20	27,872	19.55%	5,449
2321	ED Physician Assistant	0.20	27,872	19.55%	5,449
3275	Nurse Practitioner/APRN	0.20	27,872	19.55%	5,449
3385	ED Physician Assistant	0.20	31,200	19.55%	6,100

**BUDGET JUSTIFICATION
PERSONNEL - SALARIES AND WAGES**

3447	ED Physician Assistant	0.20	27,456	19.55%	5,368
3562	Physician Assistant	1.00	112,320	19.55%	21,959
3974	ED Physician Assistant	0.20	27,872	19.55%	5,449
					0
TOTAL:					833,433.00
JUSTIFICATION/COMMENTS:					

**BUDGET JUSTIFICATION
PERSONNEL: PAYROLL TAXES, ASSESSMENTS, AND FRINGE BENEFITS**

Applicant/Provider: Waianae District Comprehensive Health and Hospital Board, Inc.

RFP No.: _____ Period: 7/1/2017 to 6/30/2018

Date Prepared: 1/19/2017

Contract No. 0
(As Applicable)

TYPE	BASIS OF ASSESSMENTS OR FRINGE BENEFITS	% OF SALARY	TOTAL
PAYROLL TAXES & ASSESSMENTS:			
Social Security	833,433.00	7.65%	63,758.00
Unemployment Insurance (Federal)	833,433.00	0.00%	-
Unemployment Insurance (State)	833,433.00	0.00%	-
Worker's Compensation	833,433.00	1.00%	8,334.00
Temporary Disability Insurance	833,433.00	1.00%	8,334.00
			-
SUBTOTAL:			80,426.00
FRINGE BENEFITS:			
Group Life Insurance	833,433.00	0.60%	5,001.00
Health Insurance	833,433.00	8.00%	66,675.00
Retirement	833,433.00	3.50%	29,170.00
SUBTOTAL:			100,846.00
TOTAL:			181,272.00
JUSTIFICATION/COMMENTS:			

BUDGET JUSTIFICATION - EQUIPMENT AND MOTOR VEHICLES

Period: July 1, 2017 to June 30, 2018

Applicant: Waianae Coast Comprehensive Health Center

DESCRIPTION EQUIPMENT	NO. OF ITEMS	COST PER ITEM	TOTAL COST	TOTAL BUDGETED
Not Applicable			\$ -	
			\$ -	
			\$ -	
			\$ -	
			\$ -	
TOTAL:				
JUSTIFICATION/COMMENTS:				

DESCRIPTION OF MOTOR VEHICLE	NO. OF VEHICLES	COST PER VEHICLE	TOTAL COST	TOTAL BUDGETED
			\$ -	
			\$ -	
			\$ -	
			\$ -	
			\$ -	
TOTAL:				
JUSTIFICATION/COMMENTS:				

BUDGET JUSTIFICATION - CAPITAL PROJECT DETAILS

Period: July 1, 2017 to June 30, 2018

Applicant: Waianae Coast Comprehensive Health Center

FUNDING AMOUNT REQUESTED						
TOTAL PROJECT COST	ALL SOURCES OF FUNDS RECEIVED IN PRIOR YEARS		STATE FUNDS REQUESTED	OTHER SOURCES OF FUNDS REQUESTED	FUNDING REQUIRED IN SUCCEEDING YEARS	
	FY: 2015-2016	FY: 2016-2017	FY:2017-2018	FY:2017-2018	FY:2018-2019	FY:2019-2020
PLANS						
LAND ACQUISITION						
DESIGN						
CONSTRUCTION						
EQUIPMENT						
TOTAL:						
JUSTIFICATION/COMMENTS: Not Applicable						

GOVERNMENT CONTRACTS AND / OR GRANTS

Applicant: Waianae Coast Comprehensive Health Center

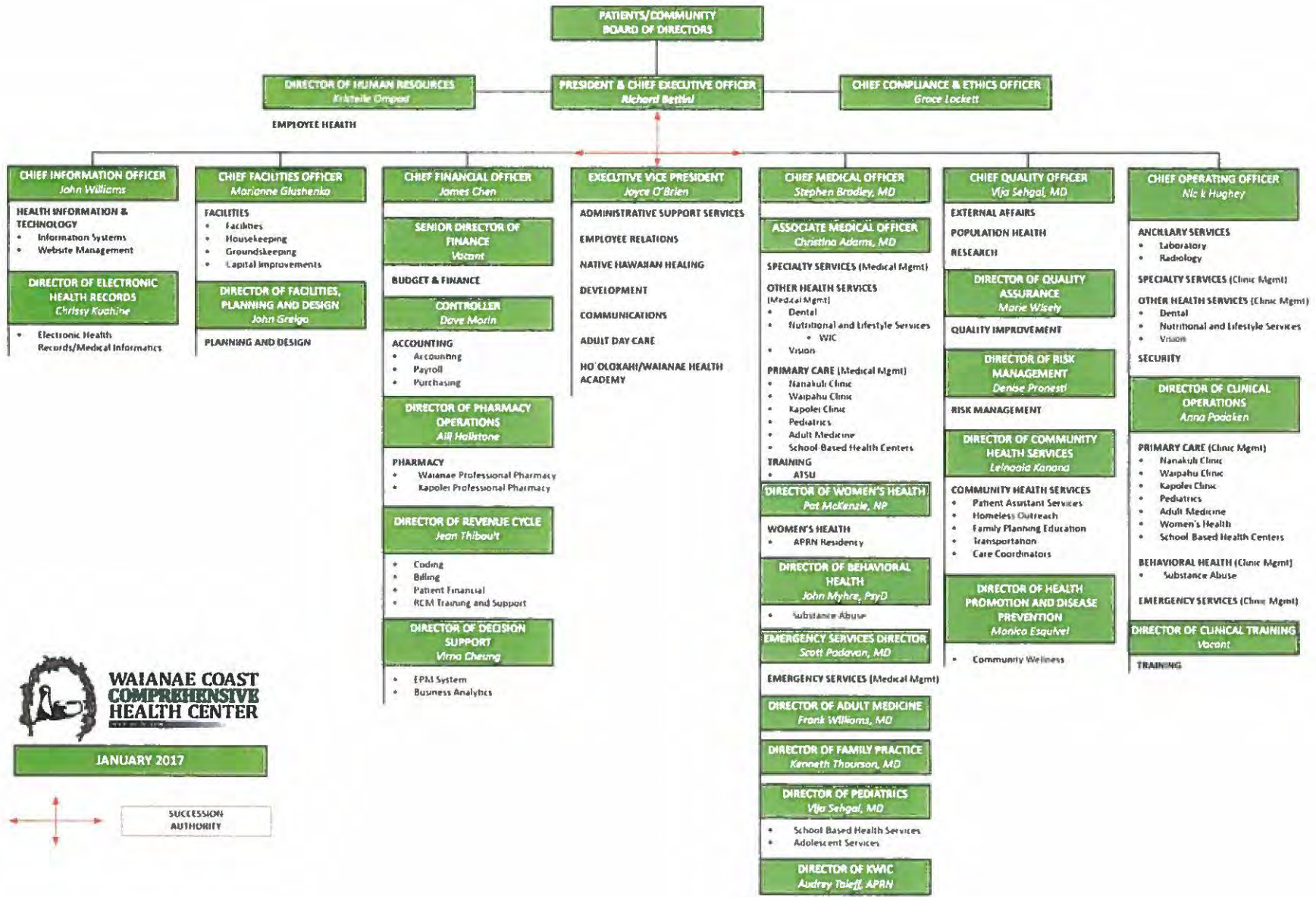
Contracts Total: 0

	CONTRACT DESCRIPTION	EFFECTIVE DATES	AGENCY	GOVERNMENT ENTITY (U.S. / State / Haw / Hon / Kau / Mau)	CONTRACT VALUE
1	Not Applicable (see comment in application)				
2					
3					
4					
5					
6					
7					
8					
9					
10					
11					
12					
13					
14					
15					
16					
17					
18					
19					
20					
21					
22					
23					
24					
25					
26					
27					
28					
29					
30					

ATTACHMENT C:

ORGANIZATION CHART

WAIANAE COAST COMPREHENSIVE HEALTH CENTER ORGANIZATIONAL CHART



JANUARY 2017



ATTACHMENT D:

CERTIFICATE OF GOOD STANDING



Department of Commerce and Consumer Affairs

CERTIFICATE OF GOOD STANDING

I, the undersigned Director of Commerce and Consumer Affairs of the State of Hawaii, do hereby certify that

**WAIANAЕ DISTRICT COMPREHENSIVE HEALTH AND HOSPITAL BOARD,
INCORPORATED**

was incorporated under the laws of Hawaii on 05/06/1969 ;
that it is an existing nonprofit corporation; and that,
as far as the records of this Department reveal, has complied
with all of the provisions of the Hawaii Nonprofit Corporations
Act, regulating domestic nonprofit corporations.



IN WITNESS WHEREOF, I have hereunto set
my hand and affixed the seal of the
Department of Commerce and Consumer
Affairs, at Honolulu, Hawaii.

Dated: January 06, 2017

Director of Commerce and Consumer Affairs

ATTACHMENT E:

DECLARATION STATEMENT

**DECLARATION STATEMENT OF
APPLICANTS FOR GRANTS PURSUANT TO
CHAPTER 42F, HAWAII REVISIED STATUTES**

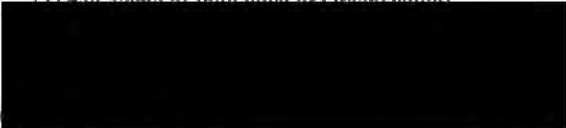
The undersigned authorized representative of the applicant certifies the following:

- 1) The applicant meets and will comply with all of the following standards for the award of grants pursuant to Section 42F-103, Hawaii Revised Statutes:
 - a) Is licensed or accredited, in accordance with federal, state, or county statutes, rules, or ordinances, to conduct the activities or provide the services for which a grant is awarded;
 - b) Complies with all applicable federal and state laws prohibiting discrimination against any person on the basis of race, color, national origin, religion, creed, sex, age, sexual orientation, or disability;
 - c) Agrees not to use state funds for entertainment or lobbying activities; and
 - d) Allows the state agency to which funds for the grant were appropriated for expenditure, legislative committees and their staff, and the auditor full access to their records, reports, files, and other related documents and information for purposes of monitoring, measuring the effectiveness, and ensuring the proper expenditure of the grant.
- 2) If the applicant is an organization, the applicant meets the following requirements pursuant to Section 42F-103, Hawaii Revised Statutes:
 - a) Is incorporated under the laws of the State; and
 - b) Has bylaws or policies that describe the manner in which the activities or services for which a grant is awarded shall be conducted or provided.
- 3) If the applicant is a non-profit organization, it meets the following requirements pursuant to Section 42F-103, Hawaii Revised Statutes:
 - a) Is determined and designated to be a non-profit organization by the Internal Revenue Service; and
 - b) Has a governing board whose members have no material conflict of interest and serve without compensation.

Pursuant to Section 42F-103, Hawaii Revised Statutes, for grants used for the acquisition of land, when the organization discontinues the activities or services on the land acquired for which the grant was awarded and disposes of the land in fee simple or by lease, the organization shall negotiate with the expending agency for a lump sum or installment repayment to the State of the amount of the grant used for the acquisition of the land.

Further, the undersigned authorized representative certifies that this statement is true and correct to the best of the applicant's knowledge.

Waianae Coast Comprehensive Health Center
(Typed Name of Individual or Organization)



1/20/2017
(Date)

Richard P. Bettini President and Chief Executive Officer
(Typed Name) (Title)