

House District 46 _____

Senate District 22 _____

THE TWENTY-NINTH LEGISLATURE
APPLICATION FOR GRANTS
CHAPTER 42F, HAWAII REVISED STATUTES

Log No: _____

For Legislature's Use Only

Type of Grant Request:

GRANT REQUEST – OPERATING

GRANT REQUEST – CAPITAL

"Grant" means an award of state funds by the legislature, by an appropriation to a specified recipient, to support the activities of the recipient and permit the community to benefit from those activities.

"Recipient" means any organization or person receiving a grant.

STATE DEPARTMENT OR AGENCY RELATED TO THIS REQUEST (LEAVE BLANK IF UNKNOWN): _____

STATE PROGRAM I.D. NO. (LEAVE BLANK IF UNKNOWN): _____

1. APPLICANT INFORMATION:

WAHIAWA GENERAL HOSPITAL
Legal Name of Requesting Organization or Individual.

Dbn:

Street Address: 128 LEHUA ST
WAHIAWA, HI 96786

Mailing Address: _____

2. CONTACT PERSON FOR MATTERS INVOLVING THIS APPLICATION:

Name DOUG DEGROAF _____

Title CHIEF EXECUTIVE OFFICER _____

Phone # 808-621-4210 _____

Fax # 808-621-4451 _____

E-mail DOUG.DEGRAAF@WAHIAWAGENERAL.ORG

3. TYPE OF BUSINESS ENTITY:

- NON PROFIT CORPORATION INCORPORATED IN HAWAII
- FOR PROFIT CORPORATION INCORPORATED IN HAWAII
- LIMITED LIABILITY COMPANY
- SOLE PROPRIETORSHIP/INDIVIDUAL
- OTHER

6. DESCRIPTIVE TITLE OF APPLICANT'S REQUEST:

CAPITAL FUND SUPPORT FOR WAHIAWA GENERAL HOSPITAL'S PATIENT CARE FACILITIES AND EQUIPMENT

4. FEDERAL TAX ID #: _____

5. STATE TAX ID #: _____

7. AMOUNT OF STATE FUNDS REQUESTED:

FISCAL YEAR 2018: \$ 3,977,500 _____

8. STATUS OF SERVICE DESCRIBED IN THIS REQUEST:

- NEW SERVICE (PRESENTLY DOES NOT EXIST)
- EXISTING SERVICE (PRESENTLY IN OPERATION)

SPECIFY THE AMOUNT BY SOURCES OF FUNDS AVAILABLE AT THE TIME OF THIS REQUEST:

STATE \$ _____

FEDERAL \$ _____

COUNTY \$ _____

PRIVATE/OTHER \$ _____

TYPE N _____

AUTHORIZED SIGNATURE _____

DOUG DEGROAF - CHIEF EXECUTIVE OFFICER
NAME & TITLE

DATE SIGNED

Rev 12/2/16



RECEIVED

1/20/17

Application for Grants

If any item is not applicable to the request, the applicant should enter "not applicable".

I. Background and Summary

This section shall clearly and concisely summarize and highlight the contents of the request in such a way as to provide the State Legislature with a broad understanding of the request. Please include the following:

1. A brief description of the applicant's background;
Wahiawa General Hospital (WGH) is a community owned, private, nonprofit corporation under section 501-(c)-3 of the Internal Revenue Code. Wahiawa General Hospital is located in the city Wahiawa, Hawaii, on the island of Oahu. The Hospital was established in 1944 by the Department of Defense. A few years later a group of leaders in the Wahiawa Community agreed to assume operation of the Hospital in order to continue to provide healthcare services to the people of Central Oahu and the North Shore.

A voluntary Board of Directors governs WGH. The Directors represent a broad spectrum of professional, business and community leaders. The Board is dedicated to providing quality healthcare services for all people within the Hospital's service area.

WGH is currently licensed for 53 inpatient acute care beds, which includes 10 geriatric psych, and 107 skilled nursing beds. It provides excellent emergency services supported with radiology and laboratory services, inpatient intensive care, inpatient telemetry and medical surgical services. Key services at WGH include Emergency Services, Acute Care Senior Behavioral Health and Long Term Skilled Nursing. Emergency Services are critically important to the community and are averaging 55/60 emergency visits per day and over 95% of all inpatients are admitted via Emergency Services.

WGH is a critical component of Oahu's island-wide emergency medical services (EMS) network. Its Emergency Services, staffed by Board Certified Physicians, offers EMS coverage for the 30-mile contiguous area from Waialua to Kahuku on the North Shore through Wahiawa and Mililani. Most of this area is connected by a two-lane road. It helps get emergency care to people within the crucial Golden Hour of response time.

A Major Area Employer

WGH is a major employer in the Central Oahu area with approximately 520 total full-time and part-time employees.

Approximately 90% of WGH's employees live in Kahuku, Haleiwa, Waialua, Wahiawa, Mililani and West Oahu- approximately 8% are from Honolulu and 2% from Kailua and East Oahu. Physicians providing services at WGH live in many areas of Oahu, including Kailua, Honolulu, Central Oahu, and the North Shore.

A majority of the employees are members of one of three unions: Hawaii Nurses Association, United Public Workers, or International Longshore and Warehouse Union.

WGH is important not only for the community's medical health, but its economic health as well.

Crisis:

Wahiawa General Hospital was faced with extraordinary circumstances which lead to its financial crisis:

- Physician Shortages in Hawaii- WGH experienced a major outflow of specialist physicians to Honolulu hospitals. To stem the tide, the hospital changed its care delivery model to include hospitalists to care for its inpatients. This translated to a budget of over \$1.6 million to support the Hospitalists, on-call surgeons and anesthesiologists.
- Support of Family Medicine Residency Teaching Program- For over 20 years, WGH supported the UH Family Medicine Residency Program. It cost the hospital approximately \$2 million in unfunded costs annually. The hospital stepped to the plate to help grow Hawaii's physician base, but this hurt its operating cash reserves.

In late calendar year 2014, Queen's Medical Center, Hawaii Pacific Health and HMSA agreed to help fund and develop a consortium model to support the Family Medicine Residency Program Faculty Costs. Wahiawa General Hospital agreed to transfer the Physicians Clinic Mililani to University Clinical, Education and Research Associates (UCERA), a subsidiary of John A. Burns School of Medicine (JABSOM). as part of this effort, however funding for the State of Hawaii's and JABSOM's portion of this Program never materialized

- Queen's Medical Center West (QMC-W) Opening - In addition to the above issues, Wahiawa General Hospital experienced nearly a 20% reduction in its patient revenues with the reopening of QMC-W. A 20% drop in revenues was catastrophic in and of itself. Almost no hospital in the United States could have survived such an event.
 - In Fiscal Year 2015, due to QMC-W opening, WGH needed to adjust for a drop in operating revenues of over \$900,000 per month which has created an incipient insolvency problem.
 - For comparison to prior years: Wahiawa's patient revenues have essentially

been flat based on FY 2011 before QMC-W closed versus FY 2015 after QMC-W reopened.

- Hawaii Health Systems Corporation (HHSC) - Hawaii's public hospital provide a healthcare safety net for their communities. All of HHSC's acute care hospitals operate in rural areas. Many of them struggle financially due to the payor mix in their service area. Similarly, WGH is a safety net for its region with a payor mix that makes it challenging to meet budget needs. WGH is the only rural hospital in the state not affiliated with a larger healthcare system.
- Wahiawa Neighborhood Revitalization Strategy Area (NRSA) - Wahiawa is designated by the federal government as a distressed community. Many of Wahiawa's patients are from the Wahiawa Neighborhood Revitalization Strategy Area (NRSA). A large number of them rely on support from both Quest and Subsidized Affordable Care Act (ACA) insurance programs. Serving a distressed community means that Wahiawa General Hospital, more than most, has significant bad debts and charity care. This creates operating losses, and increases the inability to fund capital needs.

Here is a sample of charity care incurred by the hospital – FY15-- \$2.1 million. FY16-- \$1.0 million. FYTD17 (Dec)-- \$1.1 million.

Further, about 85% of patients are from Medicare and Medicaid insurance programs which pay at rates below cost and therefore do not provide sufficient operating margins to create positive operating cash flows. Admissions to Wahiawa's acute hospital services consist of approximately 65% Medicare, 20% Medicaid, 12.5% private insurance and 2.5% uninsured. The financial distribution of the skilled nursing unit also is comprised of approximately 85% Medicare and Medicaid patients.

- Pension Plan Funding and Tax Liabilities - A defined benefit pension plan liability that could not be funded almost caused the hospital to close in FY 2006 but the hospital has worked out a reduced funding plan through the Pension Benefit Guarantee Corporation (PBGC).

The hospital had defined benefit pension plan and excise tax liabilities of over \$27 million that could not be paid. The PBGC notified the Hospital in August 2012 that it had legally taken over the pension plan effective March 2010. A settlement term sheet has been agreed to and the PBGC is drafting the respective Legal Settlement Documents. The impact is estimated to decrease Wahiawa's pension related liabilities by approximately \$18 to \$20 million. The Final Settlement will reduce Wahiawa's pension related liabilities substantially but not provide a cash infusion.

Due to operational losses, the hospital has additional unfunded pension amounts from FY2013-FY2016 that are estimated at \$2 million.

- WGH's Physicians Clinic Mililani - The losses related to running the clinic over the last decade have exceeded \$1 million per year and most recently the Hospital was not able to pay the Faculty costs of the program in a timely manner. Since 2007, WGH has funded \$3.6 million in excess costs over revenues at the clinic.
- Major repair and maintenance - The hospital has basic yet significant infrastructure needs. The roof leaks and the need to continually repair and clean up after water damage requires expending personnel resources as well as financial resources. The roof needs to be replaced. There is a need to renovate bathrooms to be fully compliant with the American with Disabilities Act (ADA), the fire alarm system is at the end of its life and needs to be replaced, the same holds true for our hot water tank. Air handling units are needed for areas including the lab, the admissions area must be renovated to become fully for Health Insurance Portability and Accountability Act (HIPAA) compliant, the exterior of the building has to be painted. The list of basic CIP needs is longer. So much was deferred because the hospital simply did not have funds.

Without funding support from the Legislature, Wahiawa Hospital is not sustainable and creating a new Business Model with a new partner will not likely occur.

2. The goals and objectives related to the request;

Goal: To make desperately needed basic infrastructure repairs and improvements to Wahiawa General Hospital.

Objective: Implement infrastructure projects related to the integrity of the building's structure and ability to function as a hospital building.

Examples include, but are not limited to, need for a new generator and switches, a replacement chiller plant, a replacement hot water tank, air handling units, new roof, cafeteria repairs, painting the exterior of the building, arch flash study and full tracing.

Objective: Implement CIP projects necessary to ensure compliance with regulatory laws such as the ADA, HIPAA, and fire code.

Examples include, but are not limited to, installing a new fire alarm and sprinkler system in several areas of the campus, renovating the admission area HIPAA compliance, renovating public and patient restrooms for ADA compliance, and lighting for the parking lot.

Objective: Implement CIP projects necessary to ensure quality patient care in line with current healthcare practices.

Examples include, but are not limited to, implementing a nurse call system, renovating the operating rooms, renovating the patient rooms, replacing hospital beds in several areas of the hospital, renovating patient rooms to meet modern day practice, implementing an information technology infrastructure and network (this impacts the efficacy of electronic medical records), renovations for the lab, renovations for the pharmacy, equipment for imaging/lab/ nursing departments, landscaping, elevator upgrades to ensure patients can safely be transported within the hospital.

3. The public purpose and need to be served;

The public purpose of this grant request is to assure the financial viability and sustainability of WGH and the continued provision of Emergency and Acute Services to residents of Central Oahu, West Oahu and the North Shore. Plus, permit Wahiawa to develop an affiliation with a stronger partner and transform its business model into a sustainable strategy.

4. Describe the target population to be served;

WGH serves the overall population of approximately 110,000 residents of the Central Oahu and North Shore area, plus over two million tourists annually. The community includes a diverse population of adults, seniors, military personnel and tourists.

Wahiawa General Hospital serves the federally designated distressed community NRSA.

5. Describe the geographic coverage;

WGH's service area includes the communities of Kahuku, Haleiwa, Waialua, Wahiawa and Mililani with some overlap into Waipahu, Kunia and West Oahu. The State of Hawaii Department of Health considers WGH to be a critical link in the emergency services network for Oahu. WGH's emergency room is the nearest full-service emergency service for residents in a 30-mile radius primarily on a two-lane road. WGH is the hospital that receives many of the ambulance visits due to other area hospitals being on divert.

II. Service Summary and Outcomes

The Service Summary shall include a detailed discussion of the applicant's approach to the request. The applicant shall clearly and concisely specify the results, outcomes, and measures of effectiveness from this request. The applicant shall:

1. Describe the scope of work, tasks and responsibilities;

Scope of Work:

- Building structural integrity -- Implement basic CIP projects to ensure the building itself can function as a hospital building.
- Compliance with regulatory laws -- Implement projects so the hospital will be in compliance with the ADA, HIPAA, and fire code.
- Patient Care -- Implement CIP projects necessary to ensure quality patient care in line with current healthcare practices.

Tasks:

- Community Hospital Corporation (CHC), which started at WGH December 1st, has access to best practice models and resources. Prior to sending an interim CEO and CFO to Wahiawa, in November, they generated a preliminary financial analysis. Detailed analysis is now in progress.
 - A part of the analysis was prioritizing basic, long overdue capital improvement projects.
 - All CIP contracts will be awarded via a competitive bidding process to ensure funds are expended efficiently without sacrificing quality.
 - The Hospital's administrative staff will monitor contracts, construction and deliveries of equipment.
2. Provide a projected annual timeline for accomplishing the results or outcomes of the service;

In total, the timeline for accomplishing the above Scope of Services and Tasks will, at minimum, span three years. These are significant CIP projects that under any circumstance takes multiple years to accomplish

Year 1: By the end of year one,

- RFPs will be issued and awarded

Year 2: By the end of year two:

- Projects involving building permits, construction work will commence
- Projects that result in equipment purchases will be in process

Year 3: By the end of year three:

- We hope that construction projects will have done at least 50% of the work necessary.
- Equipment purchases will have been delivered and installed

3. Describe its quality assurance and evaluation plans for the request. Specify how the applicant plans to monitor, evaluate, and improve their results;

The WGH Board has a contract in place with CHC for the three year period. It is a performance based relationship with clear lines of accountability. There will be monthly progress reports to the Board based on specific benchmarks.

In addition, the WGH Board will conduct periodic site visits to check on the progress of the CIP projects. If projects are lagging, the Board and the CEO and CFO will meet with the contractor.

4. List the measure(s) of effectiveness that will be reported to the State agency through which grant funds are appropriated (the expending agency). The measure(s) will provide a standard and objective way for the State to assess the program's achievement or accomplishment. Please note that if the level of appropriation differs from the amount included in this application that the measure(s) of effectiveness will need to be updated and transmitted to the expending agency.

The WGH Board will provide updates three times per State fiscal year. These updates will provide, at a minimum:

- A list of ongoing capital improvement projects, graded on a scale of
 - S = started within the preceding four months
 - IP = In progress
 - C = completed within the preceding four months

III. Financial

Budget

1. The applicant shall submit a budget utilizing the enclosed budget forms as applicable, to detail the cost of the request.
2. The applicant shall provide its anticipated quarterly funding requests for the fiscal year 2018.

Quarter 1	Quarter 2	Quarter 3	Quarter 4	Total Grant
989,250	989,250	989,250	989,250	3,957,000

3. The applicant shall provide a listing of all other sources of funding that they are seeking for fiscal year 2018.

The hospital developed an extensive list of organizations that provide grants to hospitals. We intend to apply for as many as possible in the coming fiscal year.

4. The applicant shall provide a listing of all state and federal tax credits it has been granted within the prior three years. Additionally, the applicant shall provide a listing of all state and federal tax credits they have applied for or anticipate applying for pertaining to any capital project, if applicable.

WGH is a tax exempt organization. No state or federal tax credits have been granted within the prior three years and WGH has not applied for any such credits. WGH does anticipate applying for any such tax credits.

5. The applicant shall provide a listing of all federal, state, and county government contracts and grants it has been and will be receiving for program funding.
 - State of Hawaii Department of Health- Trauma Fund (Log No. 17-049)
 - \$50,000 Annually
 - State of Hawaii Department of Health (Log No. 14-014)
 - \$6,005,090 Total Contract Price
6. The applicant shall provide the balance of its unrestricted current assets as of December 31, 2016.
 - Total Current Assets- \$11,661,760

IV. Experience and Capability

A. Necessary Skills and Experience

The applicant shall demonstrate that it has the necessary skills, abilities, knowledge of, and experience relating to the request. State your experience and appropriateness for providing the service proposed in this application. The applicant shall also provide a listing of verifiable experience of related projects or contracts for the most recent three years that are pertinent to the request.

WGH has maintained its license and operations as an acute care hospital with a skilled nursing facility meeting the quality standards of the State of Hawaii Department of Health licensure, federal Centers for Medicare and Medicaid (CMS) certification, and national The Joint Commission accreditation.

The WGH Board retained Community Hospitals Corporation (CHC) to assist in this three year turnaround. "In 1996, Community Hospital Corporation (CHC) was established by a group of not-for-profit and community-owned healthcare systems with the intention of preserving the not-for-profit status of community-based hospitals. Driven by the passion they shared, this group of organizations formed CHC to protect community hospitals from acquisition by investor-owned hospital systems. Contributing member organizations include:

- All Saints Health System
- Arlington Medical Center
- Baptist Health System, San Antonio

- Baptist Hospitals of Southeast Texas
- Baylor Health Care System
- Covenant Health System
- Hillcrest Health System
- Kings Daughters Hospital
- Memorial Hermann Healthcare System
- Richardson Regional Medical Center
- Trinity Mother Frances Hospitals and Clinics
- United Regional Health Care System
- Valley Baptist Health System, Harlingen

Since its inception, CHC remains a not-for-profit company whose sole mission is to help hospitals remain community-operated and governed. CHC owns, manages and consults with hospitals across the United States.

CHC Consulting was founded in 2006, to assist hospitals needing strategic consulting services, assistance with special projects and opportunities for joint ventures.

Based in Plano, Texas, our organization provides community hospitals with the resources and experience they need to improve the quality of treatment outcomes, patient satisfaction and financial performance.” (source: CHC website)

B. Facilities

The applicant shall provide a description of its facilities and demonstrate its adequacy in relation to the request. If facilities are not presently available, describe plans to secure facilities.

WGH is currently licensed for 53 inpatient acute care beds (including 10 geriatric psych beds) and 107 skilled nursing beds. It provides excellent emergency services supported with state-of-the-art radiology and laboratory services, inpatient intensive care, inpatient telemetry and medical surgical services. Key services at WGH include Emergency Services, Acute Care, Senior Behavioral Health and Long Term Skilled Nursing. Emergency Services are critically important to the community and are averaging 55/60 emergency visits per day and over 95% of all inpatients are admitted via Emergency Services.

WGH is a critical component of Oahu’s island-wide emergency medical services (EMS) network. Its Emergency Services, staffed by Board Certified Physicians, offers EMS coverage for the 30-mile contiguous area from Waialua to Kahuku on the North Shore through Wahiawa and Mililani. Most of this area is connected by a two-lane road. It helps get emergency care to people within the crucial Golden Hour of response time.

Wahiawa General Hospital has been serving the community since 1944. Changes in reimbursement, physician shortages, the reopening of a west Oahu Hospital, unfunded liability, deferred maintenance and more resulted in the hospital’s dire financial situation.

V. Personnel: Project Organization and Staffing

A. Proposed Staffing, Staff Qualifications, Supervision and Training

The applicant shall describe the proposed staffing pattern and proposed service capacity appropriate for the viability of the request. The applicant shall provide the qualifications and experience of personnel for the request and shall describe its ability to supervise, train and provide administrative direction relative to the request.

The applicant shall describe the proposed staffing pattern and proposed service capacity appropriate for the viability of the request. The applicant shall provide the qualifications and experience of personnel for the request and shall describe its ability to supervise, train and provide administrative direction relative to the request.

WGH is led by dedicated community members with a diverse and well balanced array of expertise including active and retired Board Certified community physicians, financial executives, military, a large land management executive, engineer, attorney, and community residents.

The WGH Board retained CHC to assist in management during this turnaround. CHC has a unique "checks and balances" system in place to appropriately report and inform the Board of Directors of the operations of WGH.

Since its inception, CHC remains a not-for-profit company whose sole mission is to help hospitals remain community-operated and governed. CHC owns, manages and consults with hospitals across the United States.

B. Organization Chart

The applicant shall illustrate the position of each staff and line of responsibility/supervision. If the request is part of a large, multi-purpose organization, include an organization chart that illustrates the placement of this request. Attached

C. Compensation

The applicant shall provide the annual salaries paid by the applicant to the three highest paid officers, directors, or employees of the organization by position.

- Chief Executive Office- \$188,236
- Assistant Administrative Quality- \$132,889
- Pharmacy Manager- \$166,453

VI. Other

A. Litigation

The applicant shall disclose any pending litigation to which they are a party, including the disclosure of any outstanding judgement. If applicable, please explain.

Currently a pending civil suit related to discriminatory and retaliatory practice, no estimate available.

B. Licensure or Accreditation

The applicant shall specify any special qualifications, including but not limited to licensure or accreditation that the applicant possesses relevant to this request.

Wahiawa General Hospital is licensed by the State of Hawaii Department of Health, certified by the Centers for Medicare and Medicaid (CMS), and accredited by The Joint Commission

C. Private Educational Institutions

The applicant shall specify whether the grant will be used to support or benefit a sectarian or non-sectarian private educational institution. Please see Article X, Section 1, of the State Constitution for the relevance of this question.

Not applicable

D. Future Sustainability Plan

The applicant shall provide a plan for sustaining after fiscal year 2017-18 the activity funded by the grant if the grant of this application is:

- (1) Received by the applicant for fiscal year 2017-18, but
- (2) Not received by the applicant thereafter.

Turning around a hospital cannot be done within one fiscal year. We have a three year plan in place. The success of that plan is dependent in part on continued state support. The hospital will be seeking out other grant opportunities. The CIP projects contained in this application are basic projects needed to ensure the structural integrity of the hospital building, comply with regulatory requirements, and ensure patient care is in line with current healthcare practices.

E. Certificate of Good Standing (If the Applicant is an Organization)

If the applicant is an organization, the applicant shall submit one (1) copy of a certificate of good standing from the Director of Commerce and Consumer Affairs that is dated no earlier than December 1, 2016. Attached

BUDGET JUSTIFICATION - EQUIPMENT AND MOTOR VEHICLES

Period: July 1, 2017 to June 30, 2018

Applicant: WAHIAWA GENERAL HOSPITAL

DESCRIPTION EQUIPMENT	NO. OF ITEMS	COST PER ITEM	TOTAL COST	TOTAL BUDGETED
Please see attached			\$ -	
			\$ -	
			\$ -	
			\$ -	
			\$ -	
TOTAL:				
JUSTIFICATION/COMMENTS:				

DESCRIPTION OF MOTOR VEHICLE	NO. OF VEHICLES	COST PER VEHICLE	TOTAL COST	TOTAL BUDGETED
			\$ -	
			\$ -	
			\$ -	
			\$ -	
			\$ -	
TOTAL:				
JUSTIFICATION/COMMENTS:				

BUDGET JUSTIFICATION - CAPITAL PROJECT DETAILS

Period: July 1, 2017 to June 30, 2018

Applicant: Wahiawa General Hospital

FUNDING AMOUNT REQUESTED						
TOTAL PROJECT COST	ALL SOURCES OF FUNDS RECEIVED IN PRIOR YEARS		STATE FUNDS REQUESTED	OF FUNDS REQUESTED	FUNDING REQUIRED IN SUCCEEDING YEARS	
	FY: 2015-2016	FY: 2016-2017	FY:2017-2018	FY:2017-2018	FY:2018-2019	FY:2019-2020
PLANS						
LAND ACQUISITION						
DESIGN						
CONSTRUCTION			2435000		2615000	
EQUIPMENT			1522000		1362500	
TOTAL:			3,957,000		3,977,500	
JUSTIFICATION/COMMENTS: Deferred capital needs due to operational deficits Please see attached detail						

Wahiawa General Hospital
Assessment - Capital Needs

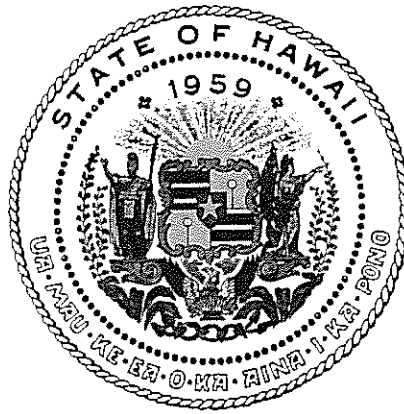
Elevator Upgrades	160,000.00	
New Chiller Plant	600,000.00	
5 New Air Handling Units on Roof (L&D, 2 for WNRC, Old OB, CT)	500,000.00	
3 New Roof Replacement	350,000.00	
Arch Flash Study and Full Tracing	210,000.00	
Parking Lot Lighting (front)	25,000.00	
Patient Room Renovation/upgrade	215,000.00	
SBH Patient Room Renovation/upgrade	50,000.00	
Storeroom/Receiving area renovation/upgrade	200,000.00	
OR upgrades	125,000.00	2,435,000.00 Construction
New Generator and Transfer Switches	90,000.00	
New Fire Alarm System	190,000.00	
New Ceiling Air Handling Unit in Medical Records	100,000.00	
New Air Handling Unit in Lab	100,000.00	
Replace Roof top Chiller for the Operating Room	167,000.00	
IT Infrastructure/network	425,000.00	
Medical Equipment x-ray/lab/nursing	450,000.00	1,522,000.00 Equipment
Year 1	3,957,000.00	
Renovate Admission Area to be HIPPA Compliant	60,000.00	
Up Grade Landscaping	10,000.00	
Upgrade Public and Patient Restrooms to be ADA Compliant	1,200,000.00	
LTC Room Renovation/upgrade	535,000.00	
Lab Renovation/upgrade	75,000.00	
Pharmacy renovations/upgrade	160,000.00	
Hospital common/support area renovation/upgrade	160,000.00	
Paint Building	340,000.00	
Cafeteria renovation/upgrade	75,000.00	2,615,000.00 Construction
New Nurse Call System: WRNC and Acute	200,000.00	
Replacement Hot Water Tank Old Tank Removed No Redundancy	120,000.00	
Replace 3 Kitchen Exhaust Fans	27,000.00	
New Sprinkler Riser and Alarm System (Kilani Ave.)	17,000.00	
Bed Replacement Hospital (Acute 40 beds)	265,000.00	
Bed Replacement Hospital (ICU 5 beds)	100,000.00	
Mattress replacements	53,500.00	
Technology upgrades-(computers)	480,000.00	
New Ceiling Air Handling Unit in Men's Room across for Café	100,000.00	1,362,500.00 Equipment
Year 2	3,977,500.00	
Total	7,934,500.00	

GOVERNMENT CONTRACTS AND / OR GRANTS

Applicant: WAHIAWA GENERAL HOSPITAL

Contracts Total: 6,055,090

	CONTRACT DESCRIPTION	EFFECTIVE DATES	AGENCY	GOVERNMENT ENTITY (U.S. / State / Haw / Hon / Kau / Mau)	CONTRACT VALUE
1	TRAUMA SYSTEM SPECIAL FUND	07/01/16-06/30/17	DOH	STATE	50,000
2	COMP MEDICAL & HEALTH CARE SVC	07/01/14-06/30/17	DOH	STATE	6,005,090
3					
4					
5					
6					
7					
8					
9					
10					
11					
12					
13					
14					
15					
16					
17					
18					
19					
20					
21					
22					
23					
24					
25					
26					
27					
28					
29					
30					



Department of Commerce and Consumer Affairs

CERTIFICATE OF GOOD STANDING

I, the undersigned Director of Commerce and Consumer Affairs of the State of Hawaii, do hereby certify that

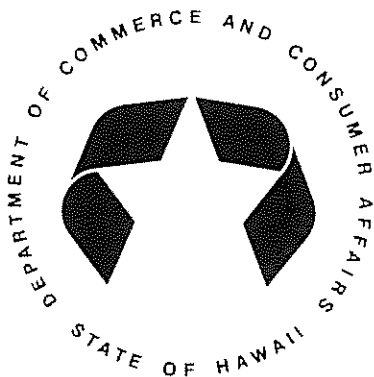
WAHIAWA GENERAL HOSPITAL

was incorporated under the laws of Hawaii on 11/21/1988 ; that it is an existing nonprofit corporation; and that, as far as the records of this Department reveal, has complied with all of the provisions of the Hawaii Nonprofit Corporations Act, regulating domestic nonprofit corporations.

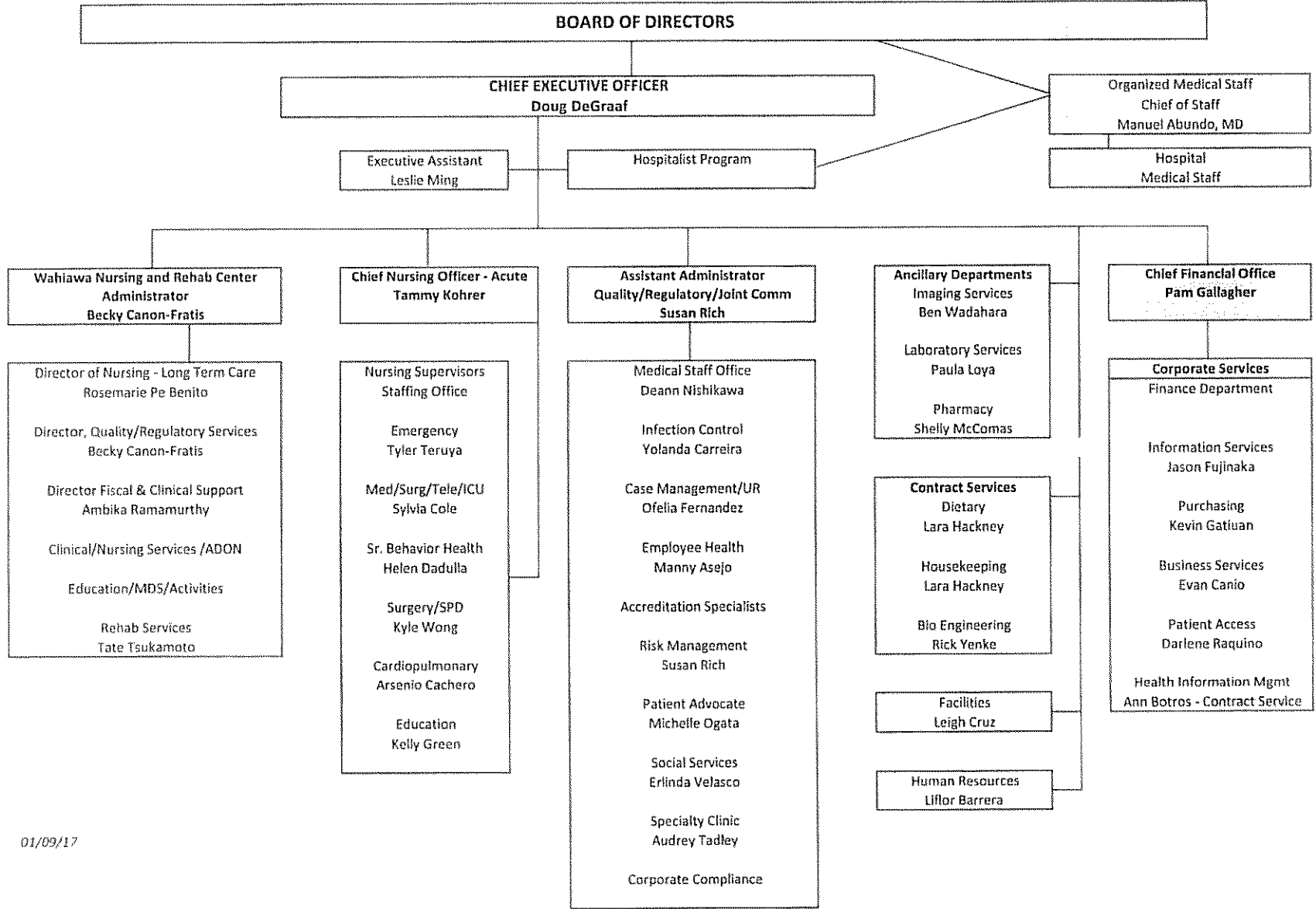
IN WITNESS WHEREOF, I have hereunto set my hand and affixed the seal of the Department of Commerce and Consumer Affairs, at Honolulu, Hawaii.

Dated: January 19, 2017

Director of Commerce and Consumer Affairs



WAHIAWA GENERAL HOSPITAL ORGANIZATION CHART



**DECLARATION STATEMENT OF
APPLICANTS FOR GRANTS PURSUANT TO
CHAPTER 42F, HAWAII REVISED STATUTES**

The undersigned authorized representative of the applicant certifies the following:

- 1) The applicant meets and will comply with all of the following standards for the award of grants pursuant to Section 42F-103, Hawaii Revised Statutes:
 - a) Is licensed or accredited, in accordance with federal, state, or county statutes, rules, or ordinances, to conduct the activities or provide the services for which a grant is awarded;
 - b) Complies with all applicable federal and state laws prohibiting discrimination against any person on the basis of race, color, national origin, religion, creed, sex, age, sexual orientation, or disability;
 - c) Agrees not to use state funds for entertainment or lobbying activities; and
 - d) Allows the state agency to which funds for the grant were appropriated for expenditure, legislative committees and their staff, and the auditor full access to their records, reports, files, and other related documents and information for purposes of monitoring, measuring the effectiveness, and ensuring the proper expenditure of the grant.

- 2) If the applicant is an organization, the applicant meets the following requirements pursuant to Section 42F-103, Hawaii Revised Statutes:
 - a) Is incorporated under the laws of the State; and
 - b) Has bylaws or policies that describe the manner in which the activities or services for which a grant is awarded shall be conducted or provided.

- 3) If the applicant is a non-profit organization, it meets the following requirements pursuant to Section 42F-103, Hawaii Revised Statutes:
 - a) Is determined and designated to be a non-profit organization by the Internal Revenue Service; and
 - b) Has a governing board whose members have no material conflict of interest and serve without compensation.

Pursuant to Section 42F-103, Hawaii Revised Statutes, for grants used for the acquisition of land, when the organization discontinues the activities or services on the land acquired for which the grant was awarded and disposes of the land in fee simple or by lease, the organization shall negotiate with the expending agency for a lump sum or installment repayment to the State of the amount of the grant used for the acquisition of the land.

Further, the undersigned authorized representative certifies that this statement is true and correct to the best of the applicant's knowledge.

WAHIAWA GENERAL HOSPITAL
(Typed Name of Individual or Organization)

(Signature)

1/20/2017
(Date)

DOUG DEGRAAF
(Typed Name) CHIEF EXECUTIVE OFFICER
(Title)