

House District _____

Senate District _____

THE TWENTY-NINTH LEGISLATURE
APPLICATION FOR GRANTS
CHAPTER 42F, HAWAII REVISED STATUTES

Log No:

For Legislature's Use Only

Type of Grant Request:

GRANT REQUEST – OPERATING

GRANT REQUEST – CAPITAL

"Grant" means an award of state funds by the legislature, by an appropriation to a specified recipient, to support the activities of the recipient and permit the community to benefit from those activities.

"Recipient" means any organization or person receiving a grant.

STATE DEPARTMENT OR AGENCY RELATED TO THIS REQUEST (LEAVE BLANK IF UNKNOWN):

DEPARTMENT OF EDUCATION _____

STATE PROGRAM I.D. NO. (LEAVE BLANK IF UNKNOWN): _____

1. APPLICANT INFORMATION:

Searider Productions Foundation
Legal Name of Requesting Organization or Individual:

Db: NA

Street Address: 84-370 Makaha Valley Road Waianae 96792

Mailing Address:

2. CONTACT PERSON FOR MATTERS INVOLVING THIS APPLICATION:

Name L. CANDY SUIISO

Title PRESIDENT

Phone # 808 255-2877

Fax # 808 697-7018

E-mail candysuiso@seariderproductions.com

3. TYPE OF BUSINESS ENTITY:

- NON PROFIT CORPORATION INCORPORATED IN HAWAII
- FOR PROFIT CORPORATION INCORPORATED IN HAWAII
- LIMITED LIABILITY COMPANY
- SOLE PROPRIETORSHIP/INDIVIDUAL
- OTHER

6. DESCRIPTIVE TITLE OF APPLICANT'S REQUEST:

TO SECURE FUNDING FOR PROGRAM STAFFING, INSTRUCTOR COSTS, BUS TRANSPORTATION, TEACHER SUBSTITUTES AND STIPENDS, SUPPLIES AND EQUIPMENT AND INSTRUCTIONAL MATERIALS

4. FEDERAL TAX ID #: _____

5. STATE TAX ID #: _____

7. AMOUNT OF STATE FUNDS REQUESTED:

FISCAL YEAR 2018: \$ 110,000

8. STATUS OF SERVICE DESCRIBED IN THIS REQUEST:

- NEW SERVICE (PRESENTLY DOES NOT EXIST)
- EXISTING SERVICE (PRESENTLY IN OPERATION)

SPECIFY THE AMOUNT BY SOURCES OF FUNDS AVAILABLE AT THE TIME OF THIS REQUEST:

STATE \$ 0

FEDERAL \$ 0

COUNTY \$ 0

PRIVATE/OTHER \$ 0

REPRESENTATIVE:

AUTHORIZED SIGNATURE

L. CANDY SUIISO PRESIDENT

NAME & TITLE

01/20/2017

DATE SIGNED



RECEIVED
1/20/17
ayb



SEARIDER PRODUCTIONS

LETTER OF TRANSMITTAL

HAND-DELIVERY

Date: January 20, 2017

To: The Honorable Jill Tokuda
Chair, Senate Committee on Ways and Means
Twenty-Forth District, State of Hawaii
Hawaii State Capitol, Room 207
Honolulu, HI 96813

From: L. Candy Suiso, President
Searider Productions Foundation

Re: The Twenty-Ninth Legislature Application for Grants
Chapter 42F, Hawaii Revised Statutes

The following document (s) is/are enclosed herewith:

- For Necessary Action
- Hand Deliver

Three (3) originals dated 1/20/17 – Application for Grants – Grant Request – Operating

Searider Productions Foundation

The Twenty-Ninth Legislature

State Grant In Aid Application

The Searider Productions Foundation respectfully requests funding in the amount of \$110,000 to support the Nanakuli-Waianae Complex Area Secondary Schools in the development and implementation of a comprehensive Chinese Cultural and Language program, internships and job opportunities to prepare them for the future development of the hotel industry in the Ko Olina Resort area and the increase of guests from Chinese speaking countries to Hawaii.

I. Background and Summary

A. Applicant's Background

The Searider Productions Foundation (SPF) is a Hawaii non-profit 501(c) (3) corporation whose mission is to provide the Waianae Community on the Leeward Coast, especially it's youth, with the educational support, job training and workforce development opportunities for success as citizens of local and global communities.

We strive to ensure that our leaders of tomorrow will honor and carry the values and traditions of our community, past, present and future forward as college graduates and career-ready citizens.

B. Statement of Need including Target Population and Geographic Coverage

The Waianae Coast Community is made up of nine schools: Nanakuli High and Intermediate School (grades 7 -12), Nanakuli Elementary School and Nanaikapono Elementary School, Waianae High School, Waianae Intermediate School, Waianae Elementary School, Makaha Elementary School, Leihoku Elementary School and Maili Elementary School.

It covers the geographical area from Nanakuli to Makaha and for the purposes of this proposal the target population will be the secondary schools (grades 7 to 12). The current secondary student population of the complex area is approximately 3,700 students with 1,250 in grades 7 -8 and 2,500 in grades 9-12.

The Nanakuli Waianae Complex Area is characterized by high unemployment and low academic achievement. The median household income is \$55,000 and per capita income is \$16,133, compared to the state average of \$67,492 and \$29,227, respectively. There are about 62% of our families who live below the federal poverty guidelines and due to this, we are the only Complex Area in the state where all of our nine schools have qualified for the Federal Community Eligibility Program which provides free transportation, breakfast and lunch to all of our students.

The coast is plagued with homelessness, poverty and startlingly low academic achievement. Leeward Coast families struggle with meager wages and comparatively high living costs, high unemployment, poor health indicators, low-achieving schools, and a host of socio-economic challenges. Thus, a depressed economy and fewer job opportunities in the Leeward area have continued this cycle of poverty which ultimately impacts educational attainment and hope for a successful future and developing a thriving community.

As the development of hotels in the Ko Olina Resort area is projected in 2018, the clientele will be from Chinese speaking countries. For our students and adults in the community, the challenge is not just of finding work, but lacking the skills and experience for these types of jobs in the hospitality industry. Therefore the need exists for the hospitality industry to have skilled workers who understand the cultural protocols of the Chinese as well as the ability to speak the language well enough to provide high quality service for the hotel guests.

We have the potential workforce in our schools and community and this current undertaking aims to prepare them through providing a comprehensive cultural and language curricula from grades 7 to 12 in our secondary schools and for adults through a partnership with UH system colleges, After School All Stars and the Ko Olina Resort hotels.

C. Goals and Objective of the Nanakuli Waianae Complex Area Project

The primary objectives of the project are to:

- 1) Provide an afterschool Chinese Cultural program for Intermediate students in grades 7 and 8 to create global awareness and understanding of China, its people and their society,
- 2) Provide early college dual credit courses in Conversational Chinese for high school students from college instructors,
- 3) Conduct professional development for DOE CTE and World Language Teachers on the business and cultural protocols of China and other Asian countries,
- 4) Secure job shadowing, internships and employment opportunities for our students with Ko Olina Resort hotels through the Career Technical Education Program at each high school,
- 5) Establish a partnership with Leeward Community College and/or DOE Adult Education to conduct Conversational Chinese Language and Culture Courses for the adult community and high school students.

These objectives are in alignment with the Hawaii Department of Education's Strategic Plan Goals for preparing students for success in college, career and

citizenship in order to build a better future for themselves, their families and the Westside Community on the Leeward Coast.

II. Service Summary and Outcomes

A. Scope of Work, Tasks and Responsibilities

The Searider Productions Foundation Nanakuli Waianae Complex Area Project is comprised of the following:

- 1) Development and implementation of a Chinese Cultural program in partnership with After School All Stars (ASAS). This program will integrate into the existing ASAS program and provide students in grades 7-8 opportunities to engage in global and cultural awareness, history, the arts, food, society, language and experience through visits to downtown Chinatown, the East West Center, the Academy of Arts, restaurants and Digital Media Productions. The program will be offered two times a week after school with special events that may be during the school day, weekend or evenings. ASAS will be responsible for the hiring of the staff of this program and work in partnership with Family and Community Engagement Specialist from the Nanakuli Waianae Complex Area (NWCA) Office in the development of the curriculum, program, monitoring and evaluation.
- 2) Offering of Conversational Chinese Dual Enrollment College Courses. Waianae High and Nanakuli High and Intermediate Schools currently offer dual enrollment courses with both UH West Oahu and Leeward Community College. The existing structure will allow for the schools to add a Conversational Chinese Language course and give the students both a high school World Languages credit as well as college credits. The instructor costs will be the same as the agreed upon costs with each higher education institution and the classes will be taught on the high school campuses. The Early College Program courses fall under the oversight of the Principal with program implementation responsibilities held by the College and Career Counselor. The NWCA School Renewal Specialist in charge of the College and Career Program will be responsible for the support, monitoring and evaluation of these courses.
- 3) Provide professional development, training and on the job experiences that will advance and broaden the Career Technical Education (CTE) and World Languages teachers understanding of Chinese cultural and business protocols. Training will be provided in partnership with industry professionals and UH system instructors. The purposes of the job-embedded staff development are to increase global awareness, refine existing instructional materials and strategies and integrate the real world situations into the classroom.
- 4) Secure partnerships with industry for job shadowing and internships for students to understand the opportunities in the hotel and hospitality industry. The Family

and Community Engagement Specialist from the NWCA will work with school principals, CTE Department Chairs, College and Career Counselors to create consistent program procedures, identify potential internship and job shadowing partners, make contact and support implementation of the program. Data collection, monitoring and evaluation will be the responsibility of the NWCA Family and Community Engagement Specialist.

- 5) Provide the adults in the community who may be interested in future job opportunities career skills in the hotel industry in the Ko Olina Resort area. Work with Leeward Community College (LCC) and/or DOE Adult Education to offer a Conversational Chinese Language and Culture Course. This would be an introduction to language as part of entry level job requirements in the hotel industry. The DOE will support communication of these courses as well as any other career related information to parents and families via our websites. The operations of this program will be under the respective educational institutions.

B. Projected Timeline

Action	Target Dates
Development and implementation of a Chinese Cultural program in partnership with After-School All-Stars (ASAS)	
Collaborate with ASAS on developing Chinese Cultural Program Curriculum	March 2017 – June 2017
Implement Chinese Cultural Program	August 2017 – June 2018
Offering of Conversational Chinese Dual Enrollment College Courses	
Contract UH Systems Professors to teach Chinese Language courses	July 2017
Implement Chinese Language course	August 2017 – June 2017
Provide professional development, training and on the job experiences that will advance and broaden the CTE and World Languages teachers understanding of Chinese cultural and business protocols	
Plan professional development, training, and job experiences	August 2017
Connect and coordinate with hotel industry	September 2017
Implement professional development, training and job experiences	October 2017 December 2017 May - June 2017
Secure partnerships with industry for job shadowing and internships for students to understand the employment opportunities in the hotel and hospitality industry	
Connect and coordinate with hotel industry	August – December 2017
Implement job shadowing and internships	January – June 2018
Provide the adults in the community who may be interested in future job opportunities career skills in the hotel industry in the Ko Olina Resort area.	
Contract UH Systems Professors to teach Chinese Language courses	July 2017
Implement Chinese Language course	August 2017 – June 2017

C. Quality Assurance and Evaluation Plans

1. The ASAS program conducts monitoring and evaluation on all of their program activities for grades 7-8 and the Family and Community Engagement Specialist (FCES) will work to identify the indicators of success for the program such as attendance/participation, student survey information and formative data on Chinese Cultural understanding and awareness.
2. The School Renewal Specialist (SRS) will support and monitor the enrollment and performance progress of the students in the Conversational Chinese early college courses. Student survey information will also provide perception data for improvement.
3. The School Renewal Specialist will coordinate with the CTE Department Chairs the submittal of the teacher/staff evaluations of professional development workshops and trainings after each session and reflections will be asked to be submitted by each teacher participating in the career internships.
4. The NW Complex Area FCES and SRS will coordinate the progress monitoring data quarterly and submit the reports to the Complex Area Superintendent, Principals and Searider Productions Foundation President
5. The Searider Productions Foundation will submit written progress reports to the Legislature by June 30, 2018.

D. Measure of Effectiveness

The measureable outcomes are as follows:

1. The final documented curricula and assessments for the intermediate school program
2. Number of workshops and trainings conducted, teacher/staff evaluations, positive survey data from students on the early college courses,
3. Number of college and career events planned, number of internships established and student, business and community partner evaluations.
4. Number of students enrolling in intermediate, high and adult program/courses in Chinese language and cultural awareness.

III. Financial

Searider Productions Foundation seeks a \$110,000 in funding to support the project.

Estimated costs to fund the Early College Courses is:

1. \$48,000 at \$8,000 per course (6 courses – Fall, Spring and Summer terms for each of the 2 high schools)
2. \$ 12,000 for Early College course materials and supplies
3. \$2,400 for Student Transportation for Job Shadowing Days
4. \$7,200 for Student Transportation for Internships
5. \$7,000 for Intermediate School Program Staffing costs
6. \$2,400 for Student Transportation for fieldtrips

7. \$7,000 for Intermediate School Instructional Materials and Supplies
 8. \$8,000 for Teacher substitute costs and stipends for professional development, training and internship days
 9. \$16,000 for Adult Community Language Classes
- Total Project Costs: \$110,000

Expenditure \$27,500 per quarter

SPF does not receive any state or federal tax credits nor has it applied for any tax credits pertaining to any capital projects.

SPF does not have any federal, state or county contracts or grants.

IV. Experience and Capability

A. Necessary Skills and Experience

Searider Productions Foundation obtained its 501 (c) (3) IRS tax exemption in June of 2014. Since then, it has met regularly with the Waianae High School Principals to identify the needs of the students and program needs for the school. The focus has been on fundraising to support scholarships, programs and other activities at the school. As the SPF board of directors are either alumni, teachers, community and business members, there is a continued focus on how to provide support and implement needed programs to better prepare our students and the larger community to be productive and successful members of the global society.

B. Facilities

The early college courses will be held at the high school campus facilities.
The after school program will be held at the intermediate school campus facilities.
The NW CA educational specialists will work out of their offices at Nanakuli Elementary School.
Adult Community Language Classes will be held at the respective sites of the providers.

V. Personnel: Project Organization and Staffing

A. Proposed Staffing, Staff Qualifications, Supervision and Training

1. The NW Family and Community Engagement Specialist's main responsibilities in this project are to coordinate with the After School All Stars program staff to develop, support, implement and monitor progress and create the reports of the Chinese Cultural Awareness program. The FCES will also facilitate quarterly meetings of all partners of this project to provide opportunities to discuss successes, challenges and program improvements. The FCES will be supervised by the Complex Area Superintendent. Qualifications include a bachelor's degree in Education, six years of responsible work experienced in education of which four years shall have been in teaching and two years in curriculum or program planning as appropriate.
2. The NW School Renewal Specialist's main responsibilities in this project are to coordinate and support implementation of the early college courses at the high

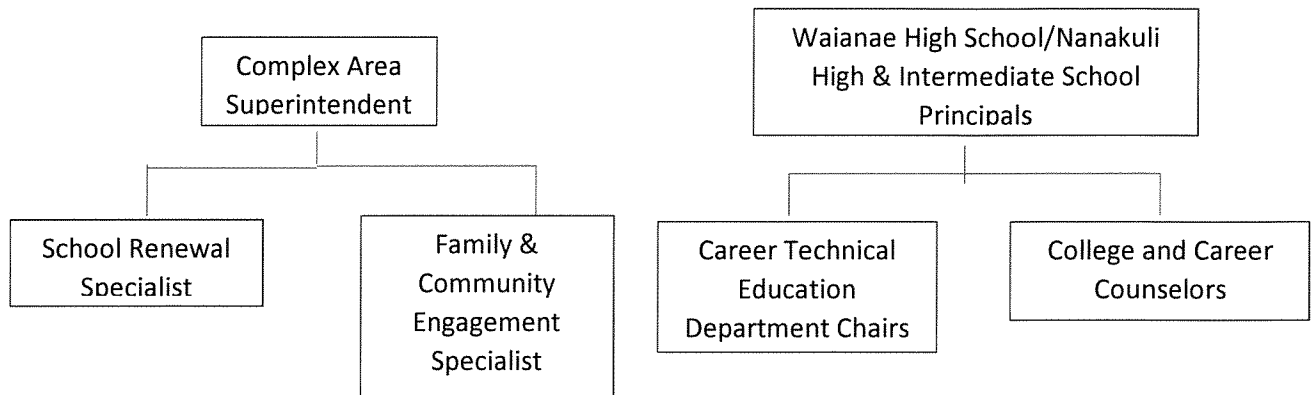
school and with adult community education and to support each high school in the development of the career shadowing and internship programs. The SRS will also organize the teacher professional development program, monitor the progress and write the reports for the early college course and teacher professional development. The SRS will be supervised by the Complex Area Superintendent. Qualifications include a bachelor's degree in Education, six years of responsible work experienced in education of which four years shall have been in teaching and two years in curriculum or program planning as appropriate.

3. The Career Technical Education Department Chairs work at the high school and with students to set up work-related opportunities such as internships, mentorships, training and job placements. The CTE DC will be supervised by the High School Principal. Qualifications include a bachelor's degree, teacher license as required by the Hawaii Teacher Standards Board and Department of Education Office of Human Resources minimum requirements; formal or informal preparation for coordination and supervision of internship programs; experience developing and maintaining relationships with volunteers and partners; comfortable working independently; excellent organizational skills and follow through; excellent written and verbal communication skills; and technical ability.
4. The College and Career Counselors work at the high school and with students to set up class schedules that support transition through high school and to post-secondary education. They coordinate the Early College Program and set up the courses and instructors with each of the respective colleges for each semester. The College and Career Counselors will be supervised by the High School Principal. Qualifications include a bachelor's degree, teacher license as required by the Hawaii Teacher Standards Board and Department of Education Office of Human Resources minimum requirements; formal or informal preparation for coordination and supervision of college and career programs; experience working with colleges and admissions offices, comfortable working independently; excellent organizational skills and follow through; excellent written and verbal communication skills; and technical ability.

B. Organizational Chart

The School Renewal Specialist and Family and Community Engagement Specialist are currently under the supervision of the Complex Area Superintendent. This project will be an additional program for each specialist. Both will be required to prepare and provide regular reports to the Complex Area Superintendent, Principals and Searider Productions Foundation.

The Career Technical Education Department Chairs and the College and Career Counselors are under the supervision of the High School Principal and will be required to prepare and provide regular reports on the progress of the objectives of this project.



C. Compensation

There are no salary positions in this project request

VI. Other

A. Litigation

There is no pending litigation to which SPF is a party or judgement against SPF.

B. Licensure or Accreditation

SPF is a Hawaii non-profit 501 (c) (3) corporation duly organized in the State of Hawaii and registered as a charitable organization with the Department of the Attorney General, State of Hawaii.

C. Federal and County Grants

NA

D. Private Educational Institutions

NA

E. Future Sustainability Plan

The Project is supported by SPF, the Waianae High School and Nanakuli High and Intermediate School Principals, and the NW Complex Area Superintendent. Once the program infrastructure is put in place and the partnerships developed, additional funding would be for the Early College Courses and intermediate school Chinese cultural awareness program. The advantage is that current personnel is being used to implement the project beginning so the sustainability costs after training will be less. SPF will pursue other grant funding opportunities and business/community supports to continue the project.

F. Certificate of Good Standing

Certificate of Good Standing is attached.

BUDGET REQUEST BY SOURCE OF FUNDS

Period: July 1, 2017 to June 30, 2018

App Searider Productions Foundation

BUDGET CATEGORIES	Total State Funds Requested (a)	Total Federal Funds Requested (b)	Total County Funds Requested (c)	Total Private/Other Funds Requested (d)
A. PERSONNEL COST				
1. Salaries				
2. Payroll Taxes & Assessments				
3. Fringe Benefits				
TOTAL PERSONNEL COST				
B. OTHER CURRENT EXPENSES				
1. Airfare, Inter-Island				
2. Insurance				
3. Lease/Rental of Equipment				
4. Lease/Rental of Space				
5. Staff Training				
6. Supplies				
7. Telecommunication				
8. Utilities				
9. UH System Early College Professor	48,000			
10. Instructional Materials - Early College	12,000			
11. Student Transportation - Job Shadow	2,400			
12. Internships	7,200			
13. Intermediate Afterschool Program	7,000			
14. Student Transportation - Field Trips	2,400			
15. Instructional Materials-Afterschool	7,000			
16. Professional Development for Teach	8,000			
17. Community Language Classes	16,000			
18				
19				
20				
TOTAL OTHER CURRENT EXPENSES	110,000			
C. EQUIPMENT PURCHASES				
D. MOTOR VEHICLE PURCHASES				
E. CAPITAL				
TOTAL (A+B+C+D+E)	110,000			
SOURCES OF FUNDING		Budget Prepared By:		
(a) Total State Funds Requested		L. Candy Suiso	(808) 255-2877	
(b) Total Federal Funds Requested		[REDACTED]	Phone	
(c) Total County Funds Requested			1/20/2017	
(d) Total Private/Other Funds Requested		Signature of Authorized Official:	Date	
TOTAL BUDGET		L. Candy Suiso, President-Searider Productions Foundation Name and Title (Please type or print)		

INTERNAL REVENUE SERVICE
P. O. BOX 2508
CINCINNATI, OH 45201

DEPARTMENT OF THE TREASURY

Date: JUN 24 2014

SEARIDER PRODUCTIONS FOUNDATION
84-370 MAKAHA VALLEY RD
WALANAE, HI 96792

Employer Identification Number:

[REDACTED]

DLN:

17053282349003

Contact Person:

CUSTOMER SERVICE

ID# 31954

Contact Telephone Number:

(877) 829-5500

Accounting Period Ending:

December 31

Public Charity Status:

170(b)(1)(A) (vi)

Form 990 Required:

Yes

Effective Date of Exemption:

February 7, 2013

Contribution Deductibility:

Yes

Addendum Applies:

No

Dear Applicant:

We are pleased to inform you that upon review of your application for tax exempt status we have determined that you are exempt from Federal income tax under section 501(c)(3) of the Internal Revenue Code. Contributions to you are deductible under section 170 of the Code. You are also qualified to receive tax deductible bequests, devises, transfers or gifts under section 2055, 2106 or 2522 of the Code. Because this letter could help resolve any questions regarding your exempt status, you should keep it in your permanent records.

Organizations exempt under section 501(c)(3) of the Code are further classified as either public charities or private foundations. We determined that you are a public charity under the Code section(s) listed in the heading of this letter.

Please see enclosed Publication 4221-PC, Compliance Guide for 501(c)(3) Public Charities, for some helpful information about your responsibilities as an exempt organization.

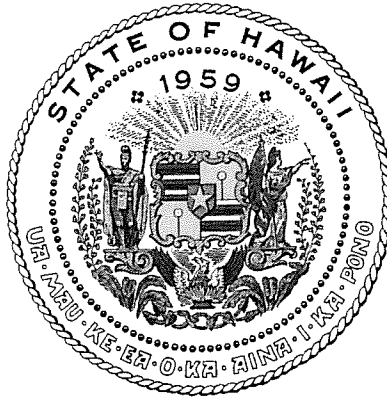
Sincerely,

[REDACTED]

Director, Exempt Organizations

Enclosure: Publication 4221-PC

Letter 947



Department of Commerce and Consumer Affairs

CERTIFICATE OF GOOD STANDING

I, the undersigned Director of Commerce and Consumer Affairs of the State of Hawaii, do hereby certify that

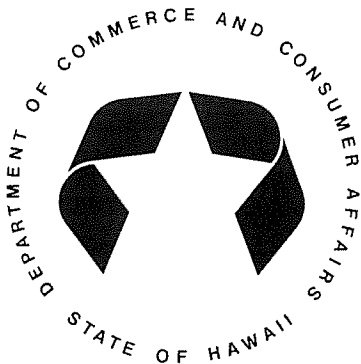
SEARIDER PRODUCTIONS FOUNDATION

was incorporated under the laws of Hawaii on 02/12/2013 ; that it is an existing nonprofit corporation; and that, as far as the records of this Department reveal, has complied with all of the provisions of the Hawaii Nonprofit Corporations Act, regulating domestic nonprofit corporations.

IN WITNESS WHEREOF, I have hereunto set my hand and affixed the seal of the Department of Commerce and Consumer Affairs, at Honolulu, Hawaii.

Dated: January 19, 2017

Director of Commerce and Consumer Affairs



**DECLARATION STATEMENT OF
APPLICANTS FOR GRANTS PURSUANT TO
CHAPTER 42F, HAWAII REVISIED STATUTES**

The undersigned authorized representative of the applicant certifies the following:

- 1) The applicant meets and will comply with all of the following standards for the award of grants pursuant to Section 42F-103, Hawaii Revised Statutes:
 - a) Is licensed or accredited, in accordance with federal, state, or county statutes, rules, or ordinances, to conduct the activities or provide the services for which a grant is awarded;
 - b) Complies with all applicable federal and state laws prohibiting discrimination against any person on the basis of race, color, national origin, religion, creed, sex, age, sexual orientation, or disability;
 - c) Agrees not to use state funds for entertainment or lobbying activities; and
 - d) Allows the state agency to which funds for the grant were appropriated for expenditure, legislative committees and their staff, and the auditor full access to their records, reports, files, and other related documents and information for purposes of monitoring, measuring the effectiveness, and ensuring the proper expenditure of the grant.

- 2) If the applicant is an organization, the applicant meets the following requirements pursuant to Section 42F-103, Hawaii Revised Statutes:
 - a) Is incorporated under the laws of the State; and
 - b) Has bylaws or policies that describe the manner in which the activities or services for which a grant is awarded shall be conducted or provided.

- 3) If the applicant is a non-profit organization, it meets the following requirements pursuant to Section 42F-103, Hawaii Revised Statutes:
 - a) Is determined and designated to be a non-profit organization by the Internal Revenue Service; and
 - b) Has a governing board whose members have no material conflict of interest and serve without compensation.

Pursuant to Section 42F-103, Hawaii Revised Statutes, for grants used for the acquisition of land, when the organization discontinues the activities or services on the land acquired for which the grant was awarded and disposes of the land in fee simple or by lease, the organization shall negotiate with the expending agency for a lump sum or installment repayment to the State of the amount of the grant used for the acquisition of the land.

Further, the undersigned authorized representative certifies that this statement is true and correct to the best of the applicant's knowledge.

Searider Productions Foundation
(Typed Name of Individual or Organization)



1/20/17
(Date)

L. Candy Suiso, Board Chair
(Typed Name) (Title)