



**The Twenty-Ninth Legislature
Application for Grants
Chapter 42F, Hawai'i Revised Statutes
Senate Committee on Ways and Means**

**State Capitol, Rm. 207
Honolulu, HI 96813
Attn: GLA**

House District 40
Senate District 19

THE TWENTY-NINTH LEGISLATURE
APPLICATION FOR GRANTS
CHAPTER 42F, HAWAII REVISED STATUTES

Log No:

For Legislature's Use Only

Type of Grant Request:

GRANT REQUEST - OPERATING

GRANT REQUEST - CAPITAL

"Grant" means an award of state funds by the legislature, by an appropriation to a specified recipient, to support the activities of the recipient and permit the community to benefit from those activities.

"Recipient" means any organization or person receiving a grant.

STATE DEPARTMENT OR AGENCY RELATED TO THIS REQUEST (LEAVE BLANK IF UNKNOWN):

STATE PROGRAM I.D. NO. (LEAVE BLANK IF UNKNOWN):

1. APPLICANT INFORMATION:

Legal Name of Requesting Organization or Individual: Institute for Native Pacific Education & Culture (INPEACE)

Db: INPEACE

Street Address: 1001 Kamokila Blvd. #226, Kapolei, HI 96707

Mailing Address: same as above

2. CONTACT PERSON FOR MATTERS INVOLVING THIS APPLICATION:

Name C. KANOELANI NAONE, PH.D.

Title Chief Executive Officer

Phone # (808) 693-7222

Fax # (808) 693-7221

E-mail kanoen@inpeace.org

3. TYPE OF BUSINESS ENTITY:

- NON PROFIT CORPORATION INCORPORATED IN HAWAII
- FOR PROFIT CORPORATION INCORPORATED IN HAWAII
- LIMITED LIABILITY COMPANY
- SOLE PROPRIETORSHIP/INDIVIDUAL
- OTHER

6. DESCRIPTIVE TITLE OF APPLICANT'S REQUEST:

LAND ACQUISITION IN KAPOLEI FOR THE PURPOSE OF DEVELOPING AN EDUCENTER THAT WILL SERVE THE ENTIRE STATE OF HAWAII

4. FEDERAL TAX ID #: [REDACTED]

5. STATE TAX ID #: [REDACTED]

7. AMOUNT OF STATE FUNDS REQUESTED:

FISCAL YEAR 2018: \$ 4,137,408.00

8. STATUS OF SERVICE DESCRIBED IN THIS REQUEST:

- NEW SERVICE (PRESENTLY DOES NOT EXIST)
- EXISTING SERVICE (PRESENTLY IN OPERATION)

SPECIFY THE AMOUNT BY SOURCES OF FUNDS AVAILABLE AT THE TIME OF THIS REQUEST:

STATE \$ _____
FEDERAL \$ _____
COUNTY \$ _____
PRIVATE/OTHER \$ 400,000.00

[REDACTED SIGNATURE]
AUTHORIZED SIGNATURE

C. KANOELANI NAONE, CHIEF EXECUTIVE OFFICER
NAME & TITLE

11/21/17
DATE SIGNED



RECEIVED

11/20/17 wa

Application for Grants

If any item is not applicable to the request, the applicant should enter "not applicable".

I. Background and Summary

This section shall clearly and concisely summarize and highlight the contents of the request in such a way as to provide the State Legislature with a broad understanding of the request. Please include the following:

1. A brief description of the applicant's background;

INPEACE is a 501(c)(3) for-impact organization with 22 years of experience serving structurally underserved communities in the State of Hawai'i. INPEACE efforts target high need/risk children, families, youth and adults. We were established in 1994 to "improve the quality of life for Native Hawaiians through community partnerships that promote educational opportunities and foster self-sufficiency" (mission statement).

INPEACE is a statewide organization with a heavy concentration of services in Wai'anac, on Hawai'i Island and Moloka'i. We also have additional services across the state, on 5 islands, at these public schools: Hawai'i Island in the Hilo, Puna and Hamakua Areas including Chiefess Kapi'olani Elementary, Keaukaha Elementary, Ke Kula 'O Nāwahīokalani'ōpu'u Iki LPCS, Pa'auilo Intermediate & Elementary, Pāhoa Elementary, Waiākea Elementary and Waiākeawaena Elementary. On Maui we are at at Hāna High & Elementary School; on Moloka'i we are at Kaunakakai Elementary, Kilohana Elementary and Kualapu'u PCCS; on the island of Kaua'i we are at Ele'ele Elementary, Kapa'a Elementary, Kōloa Elementary and Wilcox Elementary; on O'ahu we are at Ho'okele Elementary, Kamaile Academy PCS, Ke Kula 'O Nāwahīokalani'ōpu'u Iki – Māilikūkahi LPCS, Mākaha Elementary, Nānāikapono Elementary, Nānākuli Elementary and Waianae Elementary on the Leeward Coast. We also partner with the following schools on the Windward side: Hau'ula Elementary, Ka'a'awa Elementary, Kahalu'u Elementary, Kahuku Elementary, Kāne'ohe Elementary, Lā'ie Elementary, Pū'ohala Elementary, Pope Elementary, Waiāhole Elementary and Waimanālo Elementary.

Through systematic efforts, we are able to serve more than 6,200 children and parents/caregivers annually with our programs. Programs are open to all ethnicities, economic background, ages and gender. Typically, the families who participate in our programs have financial difficulty, have limited access to resources, are likely to attend the state's public school system and qualify for free and reduced lunch. (See Attachment A for our Annual Report and Attachment B for INPEACE Program Brochure)

INPEACE's eight programs are grouped under three major program areas: early childhood education; workforce development; and Hawaiian language and culture. Each of our program areas have specific goals for the work they are doing. The overarching goal for our early

education program area is: To improve school readiness and long term educational success for children. The overarching goal for our workforce development program area is: To improve the economic wellbeing of community members through degree attainment, business start-ups and financial literacy. The overarching goal of our Hawaiian language and culture program area is: To increase educational attainment and health in community through relationships, identity and land.

As a part of our agency strategic plan and in alignment with our mission, INPEACE is expanding services to the Kapolei area, where the 2nd highest concentration of Native Hawaiians on O‘ahu are located. We are requesting funds to acquire 1.2 acres of land at the Leihano development to expand our services. Programs at this location’s new INPEACE EduCenter would include the following: 1) Keiki Steps parent participation preschool, 2) Hō‘ala door to door community recruitment and canvassing program, 3) Parents as Teachers home visiting program, 4) Kūlia and Ka Lama Education Academy college degree attainment for community members program, 5) Ho‘oulu Waiwai community financial capabilities program, 6) 2 Gen Secure Families community small business program, and 7) Kupu Ola outdoor cultural classrooms focused on food sovereignty, building cultural identity and creating economic opportunities for youth. In addition, our primary administrative offices, a local food establishment that utilizes local products, and other philosophically aligned businesses would also be located at the EduCenter as a way to serve the community and generate income in our effort to move INPEACE towards self-sustainability. The identified parcel of land for our EduCenter is ideally located in close proximity to Hawaiian Homes, Kapolei High School, and the community in general so that potential program participants can easily access services.

INPEACE programs at the EduCenter would serve a target population spanning the P-20 (early childhood to college and beyond) pipeline, within the community surrounding the property in Kapolei but also including Waipahū, ‘Ewa, and Makakilo. INPEACE will be able to increase the total number of people it serves annually by at least 25% through construction of this EduCenter. In addition, the EduCenter would provide a location that INPEACE would use to showcase the excellent community work we and other agencies in Hawai‘i are doing, to national and international visitors and leaders. We anticipate a wide range of visitors from across the state and country at the site(s). In a previous 2-year period, we have had 337 visitors from around the world visit our programs and our new location will provide a single location where all visitors can come and easily see all programs in action.

INPEACE has completed all the background work necessary to launch the acquisition of land, followed by building design and construction, and is ready to use the land immediately. We have already initiated a capital campaign, identified funders, and facilitated multiple discussions to secure the \$10-12 million in construction costs. Our funders believe the INPEACE EduCenter is in alignment with their funding strategies and are waiting for INPEACE to secure the land/location before making their financial commitment to the project.

2. **The goals and objectives related to the request;**

GOAL: To expand INPEACE programs, services and geographic reach through land acquisition and the construction of an EduCenter in Kapolei, HI that will expand services to that specific area and in addition, serve the entire state.

Objective 1) To acquire 1.2 acres of mixed use land in the Kapolei area for educational, training, workforce development and Hawaiian culture and language purposes;

Objective 2) To design the EduCenter in partnership with Group 70 and community stakeholders;

Objective 3) To secure the construction costs through partnership with local foundations, individuals, trade unions and business;

Objective 4) To construct the facilities and implement program services at the site.

Outcomes Expected: 1) 1.2 acres will be secured in Kapolei; 2) A minimum of 2,000 additional participants will be served annually by INPEACE through the development of the EduCenter; 3) A \$11-12 million dollar EduCenter will be designed and constructed.

3. The public purpose and need to be served;

The EduCenter will be a 28,000 square foot facility that will house and expand the geographical reach of INPEACE's programs (details below), our administrative offices, and provide commercial space for philosophically like-minded companies that align with the needs of the area and whose rent can be utilized to help sustain our non-profit.

INPEACE focuses on three main areas: Early Childhood Education; Workforce Development; and Hawaiian Language and Culture. We have extensive research on the need in our state according to geographic location for each of these program areas and utilize that information to garner \$4.5-\$5.3 million dollars in annual program funding through local and national foundations as well as the Federal government. In order to secure that amount of funding on an annual basis, the public purpose, needs and research have to be solid and upon request we can provide an expanded binder with relevant statistics and data.

The quick and short version answer to this question, including our program area impact, is as follows:

1) Early Childhood Education: 85% of the brain is developed before the age of 5 and adverse early childhood experiences can have devastating effects of educational attainment, health and well-being.¹ The single largest indicator of how children will do in the K-12 system in the communities we serve is early education and parent knowledge about child development. While the state preschool attendance rate is 80% in many affluent communities in Hawai'i, in the communities we serve, the attendance rate is as low as 18% and on average 40%.² Additionally,

¹ Shonkoff, J. (2010) The science of early childhood development. Harvard University.

² Trend Report (2012) Accountability Resource Center HI. Retrieved on April 8, 2013 from HI DOE.

for every dollar Hawaii spends on early childhood services there is a \$4.20 savings for the state in social welfare services.³

The EduCenter would allow the INPEACE Keiki Steps program to serve an additional 60 children and 60 adults annually in Kapolei and the surrounding area. Our Keiki Steps parent participation preschool provides early childhood education to children while also increasing parent knowledge of development. The program has shown statistically significant outcomes in participant children. On average, children gain 18 percentile points on the Peabody Picture Vocabulary Test (the only national normed and validated test that is a predictor of 3rd grade reading scores) in one year of attending the program with their parent(s), grandparent or extended family member. We currently serve 650 children and 620 adults with this program annually across the state.

With the opening of the EduCenter, we will also expand the INPEACE Ho'āla program to Kapolei to ensure preschool attendance is maximized by the most vulnerable families. The INPEACE Ho'āla program uses a grassroots approach to connect families living in communities with high poverty and low academic achievement levels, with early childhood education resources that meet the specific needs of keiki and their families, including assisting with preschool and tuition subsidy applications, and referrals to services in the community. Ho'āla was formed in 2011 to increase Wai'anāe keiki preschool going rates through heightened awareness of ECE programs and assistance with ECE applications. Through a 3-year intensive door-to-door campaign, Ho'āla staff mapped out routes, knocked on every accessible door in the region (over 9,000 households), and spoke to over 4,000 adults. These efforts contributed to an increase in ECE program utilization on the Coast from 85% to 103% in 2013, and supported the 2014 opening of 235 new preschool slots through Kamehameha Schools. Over the past 2 school years, we have helped families submit over 500 applications and confirmed successful enrollment for over 260 keiki.

Finally, the EduCenter will also allow INPEACE to expand its early childhood education impact by serving an additional 30 families (specifically young parents 29 years and younger with children prenatal through 3 years old) through its Parents as Teachers (PAT) program. INPEACE PAT is a home visiting program for high-risk families that uses the national PAT Foundational Curriculum to provide key child development and parenting knowledge to families through personal visits, group connections, screenings and connections to resources. INPEACE's PAT services started in June 2009 and has since supported more than 51 staff members in receiving a PAT certification and delivering services, served over 535 families, 602 children, and completed nearly 7,098 home visits. During the 2015-16 program year, PAT served 149 families, of which 62% had 2+ high need characteristics (e.g., teen parents, child or parent with disability and/or mental illness, low educational attainment, low income, incarcerated parent), and 83% were categorized as low-income. A total of 1,831 personal visits were made, with fathers participating in 190. 51% of 97 documented family-set goals were met by end of the program year and family surveys revealed the following notable results (agree or strongly agree): 100% of parents reported

³ Good Beginnings Alliance (2009). The economic benefits of investments in early education for HI.

having a better understanding of how their child grows & learns; 100% of parents reported strengthened relationship with their child; 100% of parents reported satisfaction with PAT.

2) Workforce Development: INPEACE workforce development programs improve the economic wellbeing of community members through degree attainment, business start-ups and financial literacy. The percentage of adults with bachelor degrees or higher in the communities we serve is as low as 9% compared to 44% in more affluent neighborhoods.⁴ Furthermore, within the field of ECE, only 19% of teachers have their BA degree.⁵ College graduation is important for the success of our community. According to American Public Media, about 60% of United States jobs require higher education and higher levels of education and rates of success in college lead to greater economic and occupational returns and increased success in career and leadership. Overall college completion rates in Hawaii are extremely low: 41% of adults have an AA and about 31% attain a 4-year degree or higher, and a Complete College America Report (CCA 2011) indicates that only 3.2% of Hawaii college students attain an AA within 2 years, and only 14.9% graduate with a Bachelor within 4 years. In addition, many in the communities we serve possess skills and aspirations that are focused on the start-up or growth of small businesses to support their families as a prime or supplemental income stream. The success of these businesses can be heightened with specific training and supportive guidance, leading to more economically secure families. Finally, through INPEACE's community-based work, constituents have identified the lack of financial resources as the number one barrier to successful college attendance and degree attainment. We also know that generational poverty and predatory lending practices plague high-poverty community members where structural inequity, low economic opportunities, lack of financial knowledge, and low educational attainment perpetuate the cycle of poverty. The provision of IDAs, financial education, and other related capacity-building services can dramatically impact the well-being and outcomes for these families by filling some immediate financial gaps to support pursuit of their goals while providing them with an overall understanding of financial systems and how to plan for, manage and strengthen their economic wellbeing for themselves.

The INPEACE EduCenter would allow INPEACE to expand our Kūlia and Ka Lama Education Academy (KKLEA) services, increasing the number of community members that have a higher education degree. KKLEA is our teacher workforce development program designed for community members committed to becoming educators in their communities (preschool through secondary). KKLEA provides comprehensive counseling and coaching, professional development, financial aid and other support services to grow culturally competent, highly qualified educators dedicated to actively transforming educational outcomes. In the first 20 years of its existence (1994-2014), the KKLEA K-12 teacher component supported, graduated and placed 8 cohorts of a total of 156 teachers on the Wai'anae Coast. Between 2011-2014, the early childhood component of KKLEA supported community members in Wai'anae and on Hawai'i Island in attaining 116 early childhood educator degrees. Since 2014, KKLEA has undergone significant streamlining to improve supports, building on the strengths of both its K-12 and ECE components, resulting in a total of 114 ECE and K-12 degrees earned. Preliminary findings from our most recent external evaluation indicate that KKLEA graduation rates are 21-32%, higher than the overall college graduation rate in the community. In addition, 95% of participants who

⁴ Center on the Family at UH (2011). School and community profiles in HI.

⁵ PATCH ECE Registry database (2010). Degree attainment of licensed ECE professionals in HI.

received our culture-based training applied that cultural knowledge in their community or work and 92.6% shared the knowledge. Moreover, the demonstrated economic return of a college degree experienced by our participants, as well as the intergenerational change toward degree attainment engendered as our participants become role models for their children, students and community, constitute a powerful value added.

We would also expand our Ho'oulu Waiwai financial capabilities programming by 100 participants through the new site. Ho'oulu Waiwai is a cultural and educational financial literacy empowerment project utilizing financial education trainings to expand economic security and promote self-sufficiency for low-income community members. Program activities include financial education workshops, one-on-one financial coaching sessions, and a financial literacy fair. Services incorporate the Financial Lo'i curriculum, along with a focus on personal & family finances and post-secondary education costs. The objectives for these workshops are to increase participant understanding about finance, determine their financial position, establish positive financial behaviors, have them create a personal budget, identify additional sources of income, reduce or eliminate unnecessary expenses, increase participant understanding of credit, support them in setting personal financial goals to become financially independent, and managing the costs of post-secondary education. Special attention is given to teaching children about money and finances at a young age to equip them with the skills and habits to be successful with their finances later in life. Currently 73 community members are receiving individualized financial coaching and over 300 Wai'anae community members are attending workshops. The program consistently receives requests to expand its services.

Finally, INPEACE would expand its 2-Gen Secure Families program by 100 participants through this project. This program, newly launched in 2017, brings design thinking, financial literacy, asset building, business planning, business development support systems and individual coaching to our early childhood education participating families an effort to create brand new industries, jobs and businesses *within* the community, to increase family economic security and well-being. This innovation hones in on the strengths of the community, builds upon these strengths, involves grassroots community engagement for systems change, and capitalizes on our extensive formal community and business partnerships. In particular, the program provides financial capability, business plan development, asset building, and economic development education and opportunities to the parents/caregivers already receiving INPEACE early childhood services, thereby wrapping them in additional support for family economic stability.

3) Hawaiian Language and Culture: On an island where 85-90% of what we consume is imported, Native Hawaiians, who were once reliant on the land for a healthy sustainable diet, exhibit dire health statistics alongside many other long term immigrant populations in Hawai'i.⁶ The percentage of adults who are obese in Wai'anae (currently our largest service population) are 39.6% while the state average is 20.5% and is 15.5% in East Honolulu; the diabetes rate is 16.4% in Wai'anae compared to the state average of 7.9%.⁷

⁶ State of HI Sustainability Task Force (2008). HI 2050 Sustainability Plan: charting a course for HI's sustainable future.

⁷ HI DOH (2010). Primary care needs assessment data book 2009

This project would allow INPEACE to expand its Kupu Ola program through a new outdoor education space which would be available for INPEACE and community and/or partner program use, as well as additional participants in programming. Kupu Ola collaborates with low-performing public schools, and community partners, to create outdoor classrooms amid native plants, and is an effective strategy to foster school engagement and self-sufficiency for at-risk youth by bringing cultural and academic lessons together. Through its years, Kupu Ola has built a Coast-wide system of 'aina-based child and family educational spaces and activities. Outdoor classroom activities allow children and families that are disengaged with the educational system to re-connect. They improve community health and financial security by advocating for food sustainability and providing an avenue for community-based exchange of home-grown produce. Kupu Ola trains teachers on proven curriculum utilizing outdoor gardens, and techniques to improve teacher effectiveness. Since 2011, 26 classrooms and 567 students have been served, 2,351 individuals increased their self-sufficiency by planting over 1,200 food or utilitarian plants at their homes and 131 teachers increased their knowledge of culture-based practices.

Importantly, this EduCenter will also allow INPEACE, a leading state-wide community agency to reach its goal of 50% self-sustainability by 2024. All non-profits struggle to write grants and get funding year after year, with some having the benefit of endowments that help significantly with that pressure. INPEACE is committed to generating as much non-grant income as possible in order to serve the community with stable and long-term programs that are minimally impacted by funding dips. To that end, we have piloted a number of activities in the last 4 years that have helped us to earn income, including generating over \$100,000 over an 18-month period. With this project, we intend to rent out 10,000 square feet of the facility of which we conservatively estimate will generate \$200,000 in annual revenue, all of which will be used to fund our free programs. We think a restaurant similar to Town in Ka'imukī would be a great fit and could see a great partnership with the University of Hawai'i West 'Oahu students and the restaurant. As a cost savings measure we also intend to move our main administrative offices into the EduCenter and anticipate a \$108,000 annual savings from that move.

Here are links to our INPEACE YouTube channel where you will find short video of each of the programs we intend to house at our Kapolei facility:

Keiki Steps: <https://www.youtube.com/watch?v=p7Mv42ZaSU>

Ho'āla: https://www.youtube.com/watch?v=xDXjFi42_x0&index=8&list=UU8CCrabryS4HZDZ7vD6iIBA

Parents As Teachers: <https://www.youtube.com/watch?v=XwBLZodxEMU>

Kūlia & Ka Lama: <https://www.youtube.com/watch?v=2QJ7h4pu96k&index=6&list=UU8CCrabryS4HZDZ7vD6iIBA>

Ho'oulu Waiwai: <https://www.youtube.com/watch?v=NBrBIgmpAwe&list=UU8CCrabryS4HZDZ7vD6iIBA>

Kupu Ola: <https://www.youtube.com/watch?v=5AaHuw09x6o&list=UU8CCrabryS4HZDZ7vD6iIBA&index=30>

Here is our general YouTube channel with even more video:

<https://www.youtube.com/user/INPEACEhawaii>.

4. Describe the target population to be served; and

The target population we will serve with the EduCenter includes: high need families, children, and non-traditional students on the Leeward coast including Wai'anae, Nānākuli, Makakilo Kapolei, and 'Ewa Beach; along with non-profits and educational and research institutions in

Hawai'i. We also see foundations, educational and research institutions along with non-profits across the country coming to visit and learn at our EduCenter as a part of a national effort to increase impact and quality by sharing best practices.

5. Describe the geographic coverage.

The land we propose to acquire will be in Kapolei however, once the EduCenter is complete, trainings and opportunities will be open to all Hawai'i residents in all geographic areas in the state. Please see Attachments C and D for details on the specific parcel of land, and adjacent facilities that are developed and/or in development and Attachment E for the letter of support from the seller. Please see Attachment F for the comparable sales in the area.

II. Service Summary and Outcomes

The Service Summary shall include a detailed discussion of the applicant's approach to the request. The applicant shall clearly and concisely specify the results, outcomes, and measures of effectiveness from this request. The applicant shall:

1. Describe the scope of work, tasks and responsibilities;
If successful with the CIP process this is the work plan for project implementation:

| Scope/Tasks | Person Responsible | Timeframe | Success Measure |
|---|--|-------------------------|--|
| Work with the Governor's Executive Office and Budget Department for the release of funds. | Principal Investigator (PI) for this grant. Dr. C. Kanoelani Nāone | May- August 2017 | Funds Released by the end of 2017. |
| Finalize the land purchase contract. | PI and Realtor Sandra Wai'ale'ale | May-June 2017 | Contract negotiated and signed pending the release of CIP funds. |
| Execute land sale. | PI, Realtor, BOD for INPEACE | August- December 2014 | Land sale executed. |
| Secure a contract with Group 70 for the design of the EduCenter. | PI | May-August 2017 | Contract signed for design and deposit delivered. |
| Design of EduCenter with input from all key stakeholders. | PI, Group 70 | December 2017- May 2018 | Plans for EduCenter completed and submitted for permitting. |
| Secure funding commitments from private business, foundations and trade unions. | PI | January 2017- May 2018 | All construction costs committed (\$12 million). |
| Permit Process | Project Manager | January- June 2018 | Permit Granted. |
| Secure Contractor | PI, PM | January- March 2018 | Contractor secured. |
| Groundbreaking on EduCenter | PM | June 2018 | Groundbreaking ceremony executed. |

| | | | |
|---------------------------|--------------------|---------------|------------------------------|
| Construction of EduCenter | PI, PM, Contractor | June-Dec 2018 | EduCenter Facility Completed |
|---------------------------|--------------------|---------------|------------------------------|

While our timeline is very aggressive, our community has been waiting for these services for years. We intend to put 100% attention, energy and focus on overcoming the myriad of barriers that happen when working in the construction field. Much of the preparation work necessary for this timeline to work has already been completed.

After all parts of this work plan are completed we will proceed with securing a contractor, groundbreaking and construction.

Before the end of the 2017 legislative session we will have completed our due diligence and entered into contract on lot 16 in the Leihano Development that will be subdivided down to 1.2 acres for us based on Group 70's determination of our square footage needs in the parcel area study (Attachment D).

We have done extensive research on the parcels available in the area and the parcel and have negotiated the best price possible based on our target population access needs along with the need for a space that allows for commercial operations along with education programing. See Attachment for the comparable rates in the area and other lots that have closed or are in the process of closing. We have negotiated a \$64 per square rate with longer terms in anticipation of how long it will take to go through the CIP and then release of funds process. The mixed use lots available in an area where houses and people are located is extremely limited and therefore make our options few.

2. Provide a projected annual timeline for accomplishing the results or outcomes of the service;

The timeline is included in this section in the answer to question 1 above this question.

3. Describe its quality assurance and evaluation plans for the request. Specify how the applicant plans to monitor, evaluate, and improve their results; and

INPEACE has a multi-pronged, strengths-based approach to improving outcomes for high need communities. INPEACE has five key strategies that we use to effectively impact communities. 1) Partnerships and collaboration for collective impact is at the core of what we do. Community residents, school officials, service providers, as well as state and national stakeholders are all critical partners in the work we do. 2) A holistic approach in all programming. Silos are unacceptable. 3) INPEACE builds on the assets of the community. Rather than focusing on the deficiencies of communities, INPEACE hones in on the strengths of the community. We take participants as they are, honor them for the gifts they already possess and work to increase their capacity. 4) INPEACE uses culture as the framework from which we operate, from collaborative external partnerships, to management practices that empower staff, to direct services that honor the whole community. 5) We use a multi-pronged strategy to address root causes. We don't believe in Band-Aids that do not get to the core of what is causing a particular problem. Instead

we dig deep to understand what is at the root. We approach all our work including quality assurance and evaluation with this philosophy and it is a testament to our organization's capacity to execute programs and deliver results.

This is a straight forward request for land acquisition, and design. We are providing the position necessary to fundraise and manage the entire project with secured funds from private sources totaling \$80,000. We have a track record of doing what we say we are going to do, on time and over performing and will use that same standard for this request.

In general, INPEACE has set clear guidelines for quality assurance and evaluation for its programs and makes it a priority to regularly evaluate its effectiveness and document the gains program participants' experience. This project will follow the same evaluation standards to ensure that a quality project is being delivered that effectively meets the needs of all stakeholders. We are committed to the timely and accurate collection and reporting of all data required by the State and will adhere to any and all requests by the legislature, the Department this request will fall under and the State Budget Department.

4. List the measure(s) of effectiveness that will be reported to the State agency through which grant funds are appropriated (the expending agency). The measure(s) will provide a standard and objective way for the State to assess the program's achievement or accomplishment. Please note that if the level of appropriation differs from the amount included in this application that the measure(s) of effectiveness will need to be updated and transmitted to the expending agency.

The success measures are included in this section in the answer to question 1 in the first chart.

III. Financial

Budget

1. The applicant shall submit a budget utilizing the enclosed budget forms as applicable, to detail the cost of the request.

These have been completed and are included in this grant package pages 16-19.

2. The applicant shall provide its anticipated quarterly funding requests for the fiscal year 2018.

| Quarter 1 | Quarter 2 | Quarter 3 | Quarter 4 | Total Grant |
|------------------|------------------|------------------|------------------|--------------------|
| 100,000.00 | 4,037,408.00 | 0.00 | 0.00 | 0.00 |

3. The applicant shall provide a listing of all other sources of funding that they are seeking for fiscal year 2018.

In February we will go back to all the funders with whom we have had preliminary conversations about this project in order to generate a renewed interest and energy around this project. Our goal is to secure the \$16 million total including \$12 million dollar in construction costs in 2017. In previous years, we approached and had positive conversations with the following funders: Weinberg Foundation, Kamehameha Schools, Queen Liliuokalani Trust, along with several smaller organizations, private individuals and champions of this work. Everyone agreed that this was a great project and that once we demonstrate progress through the acquisition of land and a major funder starting the project off, others would be able to come in and support it as well. Please see the last page of Attachments A and G in the funding section for all the funders we are able to engage year after year as a testament to our ability to raise funds.

4. The applicant shall provide a listing of all state and federal tax credits it has been granted within the prior three years. Additionally, the applicant shall provide a listing of all state and federal tax credits they have applied for or anticipate applying for pertaining to any capital project, if applicable.

We have never been granted state or federal tax credits. We will not seek state or federal tax credits for this project because they would make our Weinberg funding (\$3 million) ineligible and therefore this option unfeasible.

5. The applicant shall provide a listing of all federal, state, and county government contracts and grants it has been and will be receiving for program funding.

Please see page 20 of this application for a list as requested here.

6. The applicant shall provide the balance of its unrestricted current assets as of December 31, 2016.

The current INPEACE unrestricted assets as of December 31, 2016 are \$449,241.00 This is an unaudited amount however we used the audit firm's formula to calculate the number. We start our annual audit process in June of each year so 2016's audit will be available in September.

IV. Experience and Capability

A. Necessary Skills and Experience

The applicant shall demonstrate that it has the necessary skills, abilities, knowledge of, and experience relating to the request. State your experience and appropriateness for providing the service proposed in this application. The applicant shall also provide a listing of verifiable experience of related projects or contracts for the most recent three years that are pertinent to the request.

INPEACE has the capacity to run this project as evidenced by 22 years of successful services in high need communities, serving 6,200 children & families and managing 100-130 staff annually with a \$5.1 million dollar budget. INPEACE has managed \$48 million in grants, ensured 15

successful audits, 2 agency reviews, has complied with all of the 990 Federal Tax Reporting standards and is in good standing as a low-risk auditee. INPEACE was a finalist in the Hawai'i Business Magazine Best Places to Work Award in 2010 and was the winner of the mid-size non-profit category in 2012, won the 2013 Bank of Hawai'i Native Hawaiian Non-Profit Award, the Pacific Business News Cades Schutte Award for Best Non-Profit in 2013, the Native Hawaiian Education Council Leadership Award for 2014 and named 2nd place in the Best Places to Work Pacific Business News competition for 2016. The awards demonstrate the successful management of the organization, effective leadership, adequate staffing and established infrastructure necessary to manage and execute this project.

Skills and experience needed that are specifically related to land acquisition, design, construction and fund development required for the successful implementation of our proposed project are as follows: Dr. Kanoe Nāone will be the Principal Investigator for the project and responsible for all aspects. Growing up on Kaua'i as the daughter of a father who is a contractor and mother who was a real estate agent; land transactions, building, buying and selling of real estate was common place. With a husband who was the Statewide Director of Organizing for the Hawai'i Carpenters Union for many years, contracts, building projects and labor laws are all familiar as well. On her own, Kanoe has successfully completed two capitol campaigns and construction projects. Both were for Keiki O Ka 'Āina Family Learning Centers (KOKA) when she was employed there. The first project was a preschool built on the Ānuenue K-12 campus in Pālolo Valley. That was a complicated project because it was executed by a non-profit, the funds were Federal, the land was City and County and the site was operated by the State. Despite significant complications, that project ran on time and was completed from start to finish within 3 years. All funds were expended according to grant objectives and the preschool is a flourishing P-12 example. Erskine Architects and Hawai'i Modular were key partners on that project. The second project involved the land acquisition of 3 acres in Kalihi Valley for KOKA. Kanoe saw that project from start to finish as well and then successfully applied for Extreme Makeover Home Edition. Both the land acquisition and construction were completed successfully on time, exactly according to the work plan. Kanoe was on the Extreme Makeover construction site daily for coordination purposes and interfaced with more than 60 contractors. The KOKA land was acquired through a \$3 million dollar grant from the state legislature and the construction of the facilities in Kalihi Valley were on national television as thousands of Hawai'i people volunteered to make that project exceptional. Shortly after the completion of the construction for KOKA, Kanoe began her work at INPEACE.

Here is a short biography with additional skills and expertise: Dr. Nāone is the current Chief Executive Officer for the Institute for Native Pacific Education and Culture (INPEACE) where she is responsible for the vision and direction of the agency. When Dr. Nāone accepted the CEO position in 2007, she knew that all funding was in its last year and that all programs would be shut down in 2008 unless new funding was secured within the first 6 months of her employment. Seeing it as an opportunity, she utilized her business acumen, strengthening the internal structure of the organization, improving service delivery program, and enhancing INPEACE's profile through community partnerships and by sharing and reaching out to likeminded organizations locally and nationwide. Under her leadership INPEACE has established itself as a reliable source of support for local communities and families. Her work has gained national recognition

for narrowing the achievement gap for vulnerable and underserved children. Additionally, INPEACE has not only reduced employee turnover from 34% in 2007 to 3% in 2013 and 15% in 2015; it has also doubled the number of employees and quadrupled the number of clients receiving services, all while maintaining a consistent annual operating budget of \$4.2-5 million each year with a jump in 2016 to \$5.1 million. Additionally, we have just under \$1 million in volunteer hours annually. Dr. Nāone consistently serves on leadership boards. She is currently on the national CEO Council for the Alliance for Strong Families and Communities, the Hawai'i Appleseed Center for Justice and the Kamehameha Publishing Board. She was one of 3 finalists for PBN's Business Leader of the Year 2015. Prior to her work with INPEACE, she was the Community Relations and Development Director for Keiki O Ka 'Āina Family Learning Centers, the Executive Director of The Pa Lehua Project on the Big Island and before that, she taught for five years in the state Department of Education's Hawaiian Immersion program. Please see Attachment A for our most recent annual report for results and impact.

B. Facilities

The applicant shall provide a description of its facilities and demonstrate its adequacy in relation to the request. If facilities are not presently available, describe plans to secure facilities.

The INPEACE main administrative office is located at 1001 Kamokila Blvd. #226, in Kapolei and houses the core operations including the CEO, who will be the Principal Investigator on this project. This office facility, located in the heart of Kapolei is easily accessible, meets ADA standards, and includes ample bathroom amenities and parking. It has adequate workspace and equipment for staff members to prepare for project activities, write reports, meet together for staff meetings, and meet with the project related stakeholders. This facility has been home to INPEACE since 2009. While this request is for land acquisition, please know all construction that happens after this grant will also be ADA compliant and LEED Certified.

V. Personnel: Project Organization and Staffing

A. Proposed Staffing, Staff Qualifications, Supervision and Training

The applicant shall describe the proposed staffing pattern and proposed service capacity appropriate for the viability of the request. The applicant shall provide the qualifications and experience of personnel for the request and shall describe its ability to supervise, train and provide administrative direction relative to the request.

The only staff on this project will be the Principal Investigator, Dr. Nāone. Her ability to supervise, train and provide administrative direction on this project is demonstrated in her bio found in the section above (4) under Question A. In addition, with an annual staff of 130-160 for the last nine years and as a Best Places to Work winner and finalist, she has demonstrated her ability to lead, mentor, supervise and train others.

B. Organization Chart

The applicant shall illustrate the position of each staff and line of responsibility/supervision. If the request is part of a large, multi-purpose organization, include an organization chart that illustrates the placement of this request.

See Page 22 of this grant application for our INPEACE organizational chart. Please note that this project will be directly under the responsibility of the CEO of INPEACE.

C. Compensation

The applicant shall provide the annual salaries paid by the applicant to the three highest paid officers, directors, or employees of the organization by position.

All salaries in the organization are in compliance with fair compensation laws and regulations for non-profit organizations and are well within the limits of compensation. Salaries are based on experience, college degrees, level of responsibility and performance. This is the same policy applied to all positions within the organization and in addition, we have a salary structure that helps determine pay. We have annual performance reviews for every employee in the organization and all pay increases and termination are determined by performance.

Dr. Kanoe Nāone, Chief Executive Officer - \$125,000
Maile Keliipio-Acoba, Vice President of Programs - \$89,250
Amber Richardson Director of Impact and Development \$75,100

VI. Other

A. Litigation

The applicant shall disclose any pending litigation to which they are a party, including the disclosure of any outstanding judgement. If applicable, please explain.

INPEACE does not have any pending litigation.

B. Licensure or Accreditation

The applicant shall specify any special qualifications, including but not limited to licensure or accreditation that the applicant possesses relevant to this request.

There are no licensures, accreditations or special qualifications required of INPEACE relevant to this request. We will however, work through contract with a State of Hawai'i licensed Realtor (Sandra Wai'ale'ale, RA e-Pro, Century 21) for land acquisition and architect company (Jim Stone and Group 70 International) for design.

C. Private Educational Institutions

The applicant shall specify whether the grant will be used to support or benefit a sectarian or non-sectarian private educational institution. Please see Article X, Section 1, of the State Constitution for the relevance of this question.

The request will not be used to support or benefit a sectarian or non-sectarian private educational institution.

D. Future Sustainability Plan

The applicant shall provide a plan for sustaining after fiscal year 2017-18 the activity funded by the grant if the grant of this application is:

- (1) Received by the applicant for fiscal year 2017-18, but

This is a one-time request. INPEACE has never received GIA or CIP funds from the state. This will be our only request to the legislature for funding. Once received, the project will be completed and therefore sustained.

- (2) Not received by the applicant thereafter.

This is a one-time request. INPEACE has never received GIA or CIP funds from the state. This will be our only request to the legislature for funding. Once received, the project will be completed and therefore sustained.

E. Certificate of Good Standing (If the Applicant is an Organization)

If the applicant is an organization, the applicant shall submit one (1) copy of a certificate of good standing from the Director of Commerce and Consumer Affairs that is dated no earlier than December 1, 2016.

Please see Page 23 of this application for this document.

BUDGET REQUEST BY SOURCE OF FUNDS

Period: July 1, 2017 to June 30, 2018

Applicant: Institute for Native Pacific Education and Culture (INPEACE)

| BUDGET CATEGORIES | Total State Funds Requested (a) | Total Federal Funds Requested (b) | Total County Funds Requested (c) | Total Private/Other Funds Requested (d) |
|---|--|-----------------------------------|----------------------------------|---|
| A. PERSONNEL COST | | | | |
| 1. Salaries | | | | |
| 2. Payroll Taxes & Assessments | | | | |
| 3. Fringe Benefits | | | | |
| TOTAL PERSONNEL COST | | | | |
| B. OTHER CURRENT EXPENSES | | | | |
| 1. Airfare, Inter-Island | | | | |
| 2. Insurance | | | | |
| 3. Lease/Rental of Equipment | | | | |
| 4. Lease/Rental of Space | | | | |
| 5. Staff Training | | | | |
| 6. Supplies | | | | |
| 7. Telecommunication | | | | |
| 8. Utilities | | | | |
| 9 | | | | |
| 10 | | | | |
| 11 | | | | |
| 12 | | | | |
| 13 | | | | |
| 14 | | | | |
| 15 | | | | |
| 16 | | | | |
| 17 | | | | |
| 18 | | | | |
| 19 | | | | |
| 20 | | | | |
| TOTAL OTHER CURRENT EXPENSES | | | | |
| C. EQUIPMENT PURCHASES | | | | |
| D. MOTOR VEHICLE PURCHASES | | | | |
| E. CAPITAL | | | | |
| TOTAL (A+B+C+D+E) | | | | |
| SOURCES OF FUNDING | Budget Prepared By: | | | |
| (a) Total State Funds Requested | C. Kanoelani Nāone | | (808) 693-7222 | |
| (b) Total Federal Funds Requested | [REDACTED] | | Phone | |
| (c) Total County Funds Requested | | | 1/7/17 | |
| (d) Total Private/Other Funds Requested | Signature of Authorized Official | | Date | |
| TOTAL BUDGET | C. Kanoelani Nāone Chief Executive Officer | | | |
| | Name and Title (Please type or print) | | | |

BUDGET JUSTIFICATION - EQUIPMENT AND MOTOR VEHICLES

Period: July 1, 2017 to June 30, 2018

Applicant: Institute for Native Pacific Culture and Education (INPEACE)

| DESCRIPTION EQUIPMENT | NO. OF ITEMS | COST PER ITEM | TOTAL COST | TOTAL BUDGETED |
|--------------------------|-----------------|------------------|---------------|-------------------|
| | | | \$ - | |
| | | | \$ - | |
| | | | \$ - | |
| | | | \$ - | |
| | | | \$ - | |
| TOTAL: | | | | |

JUSTIFICATION/COMMENTS:

| DESCRIPTION OF MOTOR VEHICLE | NO. OF VEHICLES | COST PER VEHICLE | TOTAL COST | TOTAL BUDGETED |
|---------------------------------|--------------------|---------------------|---------------|-------------------|
| | | | \$ - | |
| | | | \$ - | |
| | | | \$ - | |
| | | | \$ - | |
| | | | \$ - | |
| TOTAL: | | | | |

JUSTIFICATION/COMMENTS:

BUDGET JUSTIFICATION - CAPITAL PROJECT DETAILS

Period: July 1, 2017 to June 30, 2018

Applicant: Institute for Native Pacific Education and Culture (INPEACE)

| FUNDING AMOUNT REQUESTED | | | | | | |
|--|--|---------------|-----------------------|--------------------|--------------------------------------|--------------|
| TOTAL PROJECT COST | ALL SOURCES OF FUNDS RECEIVED IN PRIOR YEARS | | STATE FUNDS REQUESTED | OF FUNDS REQUESTED | FUNDING REQUIRED IN SUCCEEDING YEARS | |
| | FY: 2015-2016 | FY: 2016-2017 | FY:2017-2018 | FY:2017-2018 | FY:2018-2019 | FY:2019-2020 |
| PLANS | | | | | | |
| LAND ACQUISITION | | | \$3,537,408.00 | | | |
| DESIGN | | | \$600,000.00 | \$400,000.00 | | |
| CONSTRUCTION | | | | | \$12 mil from private sources | |
| EQUIPMENT | | | | | | |
| TOTAL: | | | 4,137,408 | 400,000 | 12,000,000 | |
| JUSTIFICATION/COMMENTS: As a partner and supporter of the work INPEACE does, Group 70 International architects have agreed to a 40% discount on design costs totaling a \$400,000 in-kind donation. *We are in serious negotiations for raising the \$12 million in capital for the construction. If we are able to raise \$3.5 million for the EduCenter before May 2017 and the CIP decisions, then we will apply the \$3.5 to immediate land purchase to expedite our timeline; and any funds awarded by the legislature to construction. | | | | | | |

GOVERNMENT CONTRACTS AND / OR GRANTS

Applicant: Institute for Native Pacific Education and Culture INPEACE)

Contracts Total: 9,897,043

| | CONTRACT DESCRIPTION | EFFECTIVE DATES | AGENCY | GOVERNMENT ENTITY (U.S. / State / Haw / Hon / Kau / Mau) | CONTRACT VALUE |
|----|--|------------------------|---|---|-----------------------|
| 1 | Kukuluao and Ka Lama Education Academy (KKLEA) Workforce Development | 9/1/14 - 8/31/17 | US DOE NHEP | U.S. | 1,959,283 |
| 2 | Keiki Steps Family Child Interaction Learning | 9/15/15 - 9/14/18 | US DOE NHEP | U.S. | 5,975,049 |
| 3 | Parents As Teachers (PAT) Home Visiting | 7/1/16 - 6/30/17 | Department of Health - HHVN | State | 665,000 |
| 4 | Kupu Ola Language and Culture | 7/1/15 - 6/30/17 | Dept. of Human Services - Office of Youth | State | 75,000 |
| 5 | Financial Literacy Empowerment NABI ANA | 9/30/14 - 9/29/19 | US DHHS ACF - Administration for Native Americans | U.S. | 1,040,961 |
| 6 | Financial Literacy Empowerment NABI AFI | 9/30/14 - 9/29/19 | US DHHS ACF - Office of Community Services | U.S. | 175,000 |
| 7 | Financial Fitness Fair 2017 | 1/1/17 - 6/30/17 | Office of Hawaiian Affairs (OHA) | State | 6,750 |
| 8 | | | | | |
| 9 | | | | | |
| 10 | | | | | |
| 11 | | | | | |
| 12 | | | | | |
| 13 | | | | | |
| 14 | | | | | |
| 15 | | | | | |
| 16 | | | | | |
| 17 | | | | | |
| 18 | | | | | |
| 19 | | | | | |
| 20 | | | | | |
| 21 | | | | | |
| 22 | | | | | |
| 23 | | | | | |

**DECLARATION STATEMENT OF
APPLICANTS FOR GRANTS PURSUANT TO
CHAPTER 42F, HAWAII REVISED STATUTES**

The undersigned authorized representative of the applicant certifies the following:

- 1) The applicant meets and will comply with all of the following standards for the award of grants pursuant to Section 42F-103, Hawaii Revised Statutes:
 - a) Is licensed or accredited, in accordance with federal, state, or county statutes, rules, or ordinances, to conduct the activities or provide the services for which a grant is awarded;
 - b) Complies with all applicable federal and state laws prohibiting discrimination against any person on the basis of race, color, national origin, religion, creed, sex, age, sexual orientation, or disability;
 - c) Agrees not to use state funds for entertainment or lobbying activities; and
 - d) Allows the state agency to which funds for the grant were appropriated for expenditure, legislative committees and their staff, and the auditor full access to their records, reports, files, and other related documents and information for purposes of monitoring, measuring the effectiveness, and ensuring the proper expenditure of the grant.

- 2) If the applicant is an organization, the applicant meets the following requirements pursuant to Section 42F-103, Hawaii Revised Statutes:
 - a) Is incorporated under the laws of the State; and
 - b) Has bylaws or policies that describe the manner in which the activities or services for which a grant is awarded shall be conducted or provided.

- 3) If the applicant is a non-profit organization, it meets the following requirements pursuant to Section 42F-103, Hawaii Revised Statutes:
 - a) Is determined and designated to be a non-profit organization by the Internal Revenue Service; and
 - b) Has a governing board whose members have no material conflict of interest and serve without compensation.

Pursuant to Section 42F-103, Hawaii Revised Statutes, for grants used for the acquisition of land, when the organization discontinues the activities or services on the land acquired for which the grant was awarded and disposes of the land in fee simple or by lease, the organization shall negotiate with the expending agency for a lump sum or installment repayment to the State of the amount of the grant used for the acquisition of the land.

Further, the undersigned authorized representative certifies that this statement is true and correct to the best of the applicant's knowledge.

Institute for Native Pacific Education & Culture (INPEACE)



(Signature)

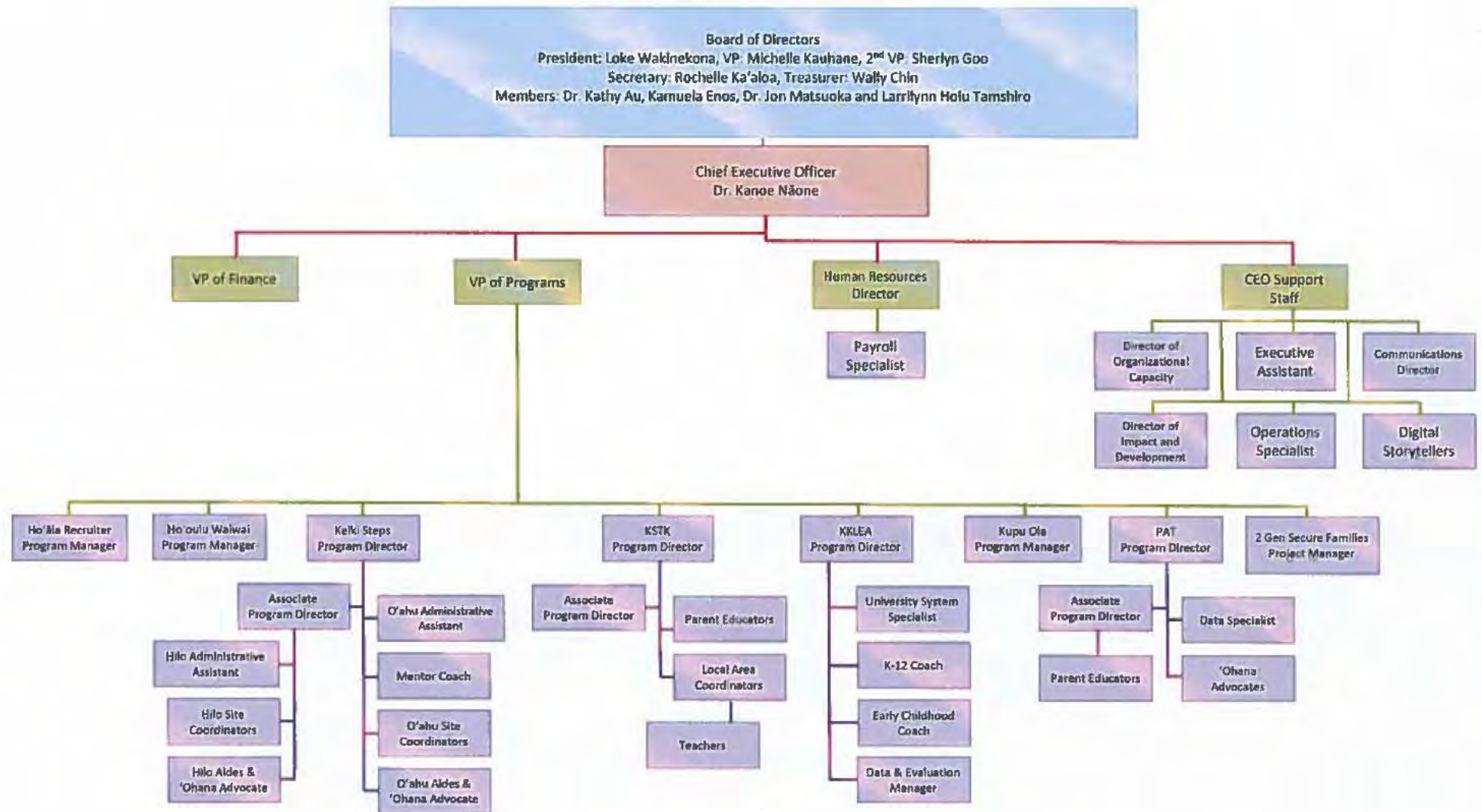
1/17/17

(Date)

Dr. C. Kanoelani Nāone
(Typed Name)

Chief Executive Officer
(Title)

INPEACE Organizational Chart





Department of Commerce and Consumer Affairs

CERTIFICATE OF GOOD STANDING

I, the undersigned Director of Commerce and Consumer Affairs of the State of Hawaii, do hereby certify that

INSTITUTE FOR NATIVE PACIFIC EDUCATION AND CULTURE

was incorporated under the laws of Hawaii on 09/20/1994 ; that it is an existing nonprofit corporation; and that, as far as the records of this Department reveal, has complied with all of the provisions of the Hawaii Nonprofit Corporations Act, regulating domestic nonprofit corporations.

IN WITNESS WHEREOF, I have hereunto set my hand and affixed the seal of the Department of Commerce and Consumer Affairs, at Honolulu, Hawaii.

Dated: January 05, 2017

Director of Commerce and Consumer Affairs



Did you know that in 2015?

- * 95% of staff were once a parent or participant in an INPEACE program.
- * 67 year-round staff members and 51 seasonal employees were employed by INPEACE.
- * 96% of INPEACE staff came from the community they serve.
- * 78% of INPEACE staff were Native Hawaiian and 98% of staff were Native Hawaiian or another ethnic minority.
- * 6,200 children, families, parents and community members were served statewide.
- * 39,928 volunteer hours valued at \$923,934.*



Early Childhood Education

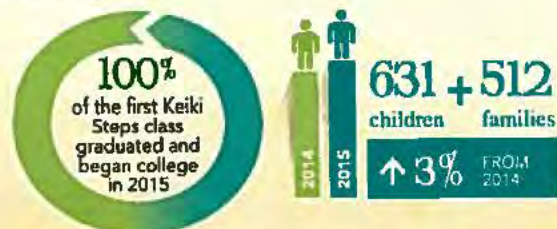


A Two-Generation Parent Participation Preschool Program

In 10 short months, children in the program gained an average of 16 percentile points on the Peabody Picture Vocabulary Test and 90% met the majority of the Hawai'i State School Readiness Assessment benchmarks for school readiness.

INPEACE received a full 10-year Certificate of Accreditation through the World Indigenous Nations Higher Education Consortium (WINHEC) in Canada in August, 2015.

FUNDED BY: Kamehameha Schools; Keiki O Ka 'Aina Family Learning Centers; Harold K.L. Castle Foundation; Harry & Jeanette Weinberg Foundation, Inc.; McInerney Foundation; Omidyar 'Ohana Fund of the Hawai'i Community Foundation; USDOE Native Hawaiian Education Program; and amazing individual donors including Okimoto Corporation.



Preparing Children with Little or No Preschool Experience for Success in School

After launching a pilot parent curriculum in 2014, we redesigned and launched a new parent curriculum that included math and language arts in 2015.

FUNDED BY: Kamehameha Schools; and Kahuku Community Fund, Richard Smart Fund, SunEdison Community Fund all of the Hawai'i Community Foundation; and each of the individual elementary schools funded a minimum of 50% of the program at their school.



5,827 keiki and families have successfully transitioned at 46 different schools across the state, since 2004.

315 students were Native Hawaiian (87%) and 216 students had NO Preschool Experience (46%).

*Because Keiki Steps follows the school calendar, data for this program encompasses the 2014-15 school year.

Culture & Language Development

DIGITAL STORYTELLERS

Capturing Community and Evaluation Through Video

Since 2011, under the direction of the Digital Storytellers, the INPEACE Facebook page has gained 775 "Likes." Its lifetime reach is in the tens of thousands, with one post, in particular, having been viewed by more than 26,000 visitors over the course of three days. This social media activity has increased the visibility of INPEACE and the services we provide.

In 2015, we published 73 videos on the INPEACEhawaii YouTube channel with a combined 6,800+ views. The most watched video, Kulia I Ka Pono (2013), was viewed 891 times.

VIDEO VIEWS ARE **↑ 363%** FROM 2014

15 new videos

were created for INPEACE in 2015.

160

videos were uploaded to the Basic Hawaiian channel in 2015, all of which were produced by INPEACE's digital storytellers.

6,813

total INPEACE video views on YouTube and 775 total followers on Facebook in 2015.

MAHALO NUI LOA to our Board of Directors, for its ongoing support, guidance and oversight.

INPEACE Board of Directors:
 Loke Wakanehona, President
 Michelle Kauhane, Vice President
 Wally Chin, Treasurer
 Rochelle Pi'ilani Ka'aloa, Secretary

Members:
 Georgiana Alvaro, Esq., Member
 Kathryn H. Au, Ph.D., Founding Board Member
 Kamuela Enos, Member
 Sherlyn Franklin Goo, Founding Board Member

Larrilynn Holu Tamashiro, Member
 Jon Matsuoka, Ph.D., Member
 Kanoë Nāone, Ph.D., Ex-Officio Member, Chief Executive Officer

MESSAGE FROM THE CEO

Aloha Kākou,

Thank you for taking the time to check out our annual report. If you are reading this then MAHALO NUI for your relationship with INPEACE! There are many people to honor for all the work that was accomplished in 2015. First, INPEACE is only able to do the powerful work in the community because of our amazing, passionate and dedicated staff and board members who are themselves representatives of the community. Next, we are blessed year after year to have wonderful funding partners who stand shoulder to shoulder with us so that we can together deliver our mission with impact. Saving the best for last, we love and honor those we are blessed to serve every day. The champions in the community who access INPEACE programs in order to improve their own personal wellbeing, the wellbeing of their family and the wellbeing of the community.

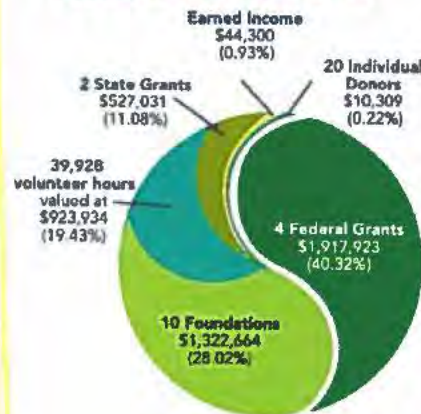
In 2015, our internal messaging and focus was 'A'ohē hana nui ke alu 'ia - *Of Service, Together* and we were reenergized at our annual staff retreat where we were immersed in social justice, systems change and 'āina based activities. Truly the work is long and arduous, if it were easy, it would already be accomplished. We know that social justice work is a marathon, not a sprint, and we are going to double down and data dive in 2016 so that systems change becomes a reality, and we invite everyone who wants to be a part of the work to let us know so we can work together.

In closing, Dr. Valorie Johnson of the W.K. Kellogg Foundation is retiring, and we want to shout out to the world that she has been the most incredible champion for work in the community. She has honored her Seneca ancestors in a way that will compel those yet to come to remember her name. She will be sorely missed in her role but knowing her, she has quietly left a legacy. Auntie Val, may the new chapter in your life be filled with 'ohana, love, blessings and joy. Me ke aloha palena 'ole.

Me ka ha'aha'a,
 -Kanoë

FINANCIAL SHAPSHOT

Total Funds Received in 2015:
\$ 3,832,227



Budgets *As a result of the timeframe, figures are non-audited.

2015 Funding Partners



Atherton Family Foundation
 Harold K.L. Castle Foundation (NEW)
 Harry & Jeanette Weinberg Foundation, Inc. (NEW)
 Kamehameha Schools
 Keiki O Ka 'Aina Family Learning Centers
 The Learning Coalition (NEW)
 McInerney Foundation (NEW)
 The Samuel N. and Mary Castle Foundation
 State of Hawai'i Department of Health - Maternal and Child Health Branch and the Health Resources and Services Administration of the U.S. Department of Health and Human Services Maternal, Infant and Early Childhood Home Visiting Program

State of Hawai'i Department of Human Services - Office of Youth Services
 U.S. Department of Education, Native Hawaiian Education Program
 U.S. Department of Health and Human Services, Administration for Children & Families, Administration for Native Americans
 U.S. Department of Health and Human Services, Assets for Independence, Native Asset Building Initiative
 Individual Donors (50% WERE NEW DONORS)

2015 Partners Who Funded INPEACE Through Hawai'i Community Foundation:

Hawai'i Children's Trust Fund
 Kahuku Community Fund
 Omidyar 'Ohana Fund
 The Rev. Takie Okumura Family Fund (NEW)

Richard Smart Fund (NEW)
 Robert Emens Black Fund (NEW)
 SunEdison Community Fund (NEW)

INPEACE.org

YOUTUBE.COM/inpeacehawaii
 FACEBOOK.COM/inpeacehawaii

@INPEACEHAWAII
 @INPEACEHAWAII



FREE Community Programs

INPEACE is committed to improving the quality of life for Native Hawaiians through community partnerships that provide educational opportunities and promote self-sufficiency.



INPEACE (Main Office)
1001 Kamokila Boulevard, Suite 226
Kapolei, Hawaii 96707

Phone: 808.693.7222
Fax: 808.693.7221

INPEACE.org    

INPEACE is an 501(c)3 for-impact agency serving communities with high concentrations of Native Hawaiians in the areas of early childhood, workforce development and Hawaiian language and culture.



January 18, 2017

RE: Institute for Native Pacific Education and Culture (INPEACE) EduCenter Request for Funding

To Whom It May Concern:

I write in strong support of the funding proposal being submitted by INPEACE for their EduCenter project.

Via an affiliate of Kisco Senior Living, we are the master-developer for the 40-acre Leihano community in the City of Kapolei, which INPEACE is proposing to construct their new EduCenter. Currently the development is anchored by Ilima at Leihano senior community and the Queen Liliokalani Trust children's center at the corner of Manawai Street and Kama'aha Ave., Kapolei. In addition, future plans for Leihano include St. Jude Catholic Church and School, National Kidney Foundation's resource center, and a selection of community oriented retail and other services including affordable hotel and conference options.

We have been conferring with INPEACE regarding their EduCenter plans, and have reviewed the programming that they offer, the proposed building plans and their overall goals for expansion. After thorough consideration, we believe that the INPEACE EduCenter would be an ideal addition to the Leihano community that we are developing, resulting in positive impacts to the Kapolei community and the State of Hawaii as a whole.

Through their acquisition of a parcel of land in the Leihano community, INPEACE would be able to expand the offering of their highly regarded community programming, including early childhood education, workforce development and Hawaiian culture and language, strengthening even more of Hawaii's children and families. Their work is in close alignment with the multi-generational and community-oriented development that we are striving to provide for the West Oahu, Hawaii. As such, we enthusiastically support their application for funding of the proposed land acquisition within Leihano.

Kisco will commit to working hand in hand with INPEACE, to insure development of the EduCenter for a groundbreaking to occur in 2018. Parcels within our development are in high demand and inventory is low. However, we are very impressed with the work of INPEACE and are highly confident in their fundraising abilities. Therefore, we have presented a Letter Of Intent to move this contemplated transaction forward so we can legally subdivide and sell the parcel of land at fair market price and under a slightly longer timeline for completion of a typical purchase and sale transaction. To this end, it should allow for INPEACE to facilitate the multiple stakeholders and processes leading to the proposed land purchase. We look forward to your joining us in this important venture for the benefit of all concerned.

Thank you kindly for your consideration of their proposal.

Sincerely,
Kisco Senior Living

A handwritten signature in dark ink, appearing to read "MJ Ritschel", is written over a horizontal line.

MJ Ritschel
Chief Investment Officer

739 Leihano Street, Kapolei, HI 96707
Direct Dial: (760) 804-7066

Kapolei Sales Comparables – Closed/Pending

Attachment F



| Project/Property | Address | Size | Zoning | Sale Price | Sale PSF | Sale Date |
|--------------------------|--|--------------------------|--------|-------------|----------|------------|
| Queen Liliuokalani Trust | Leihano Land (NWC of Kapolei Pkwy & Fort Barrette Rd) - Lot 16 | 87,120 SF (2.0 Acres) | BMX-3 | \$5,488,560 | \$63 PSF | 12/31/2015 |
| CFT Development | NWC of Farrington Hwy & Kealanani Ave | 101,016 SF (2.32 Acres) | B-2 | \$5,750,000 | \$57 PSF | 1/27/2015 |
| Leihano Land | Leihano Land (NWC of Kapolei Pkwy & Fort Barrette Rd) - Lot 5 | 42,732 SF (0.981 Acres) | BMX-3 | \$2,777,580 | \$65 PSF | Pending |
| Leihano Land | Leihano Land (NWC of Kapolei Pkwy & Fort Barrette Rd) - Lot 4 | 55,408 SF (1.272 Acres) | BMX-3 | \$3,601,520 | \$65 PSF | Pending |
| Leihano Land | Leihano Land (NWC of Kapolei Pkwy & Fort Barrette Rd) - Lots 1-3 | 171,539 SF (3.938 Acres) | BMX-3 | \$9,434,645 | \$55 PSF | Pending |