

House District 13

Senate District 7

THE TWENTY-NINTH LEGISLATURE
APPLICATION FOR GRANTS
CHAPTER 42F, HAWAII REVISED STATUTES

Log No:

For Legislature's Use Only

Type of Grant Request:

GRANT REQUEST – OPERATING

GRANT REQUEST – CAPITAL

"Grant" means an award of state funds by the legislature, by an appropriation to a specified recipient, to support the activities of the recipient and permit the community to benefit from those activities.

"Recipient" means any organization or person receiving a grant.

STATE DEPARTMENT OR AGENCY RELATED TO THIS REQUEST (LEAVE BLANK IF UNKNOWN):

STATE PROGRAM I.D. NO. (LEAVE BLANK IF UNKNOWN):

1. APPLICANT INFORMATION:

Legal Name of Requesting Organization or Individual: HUI NOEAU

Dbas: HUI NO'EAU VISUAL ARTS CENTER

Street Address: 2841 BALDWIN AVE., MAKAWAO, HI 96768

Mailing Address: 2841 BALDWIN AVE., MAKAWAO, HI 96768

2. CONTACT PERSON FOR MATTERS INVOLVING THIS APPLICATION:

Name CAROLINE KILLHOUR OR TOM BLACKBURN-RODRIGUEZ

Title Executive Director OR Associate

Phone # 808-572-6560 x. 30 OR 808-283-4570

Fax # _____

E-mail ckillhour@huinoeau.com OR tominmaui@icloud.com

3. TYPE OF BUSINESS ENTITY:

- NON PROFIT CORPORATION INCORPORATED IN HAWAII
- FOR PROFIT CORPORATION INCORPORATED IN HAWAII
- LIMITED LIABILITY COMPANY
- SOLE PROPRIETORSHIP/INDIVIDUAL
- OTHER

6. DESCRIPTIVE TITLE OF APPLICANT'S REQUEST:

SAFETY, ACCESSIBILITY, AND SUSTAINABILITY AT HUI NO'EAU VISUAL ARTS CENTER

THIS FISCAL YEAR 2018 PROPOSAL ADDRESSES THE HUI'S CRITICAL NEED FOR HANDICAP AND/OR WHEELCHAIR ACCESSIBLE PATHWAYS AND RESTROOMS, IMPROVING LIGHTING IN PUBLIC USE SPACES AND PARKING AREAS, REPAIRING AND PRESERVING HISTORIC BUILDINGS TO PREVENT WATER DAMAGE, AND COMPLETING THE HUI'S ENERGY EFFICIENCY INITIATIVES.

COMPLETION OF THIS IMPORTANT WORK WILL RESULT IN GREATER ACCESSIBILITY AS WELL AS COST SAVINGS FOR THE ORGANIZATION, WHICH FREES UP ADDITIONAL FUNDS TO BE REINVESTED IN ARTS EDUCATION, OUTREACH, AND SCHOLARSHIPS TO STUDENTS IN NEED OF FINANCIAL ASSISTANCE IN MAUI COUNTY.

4. FEDERAL TAX ID #: _____

5. STATE TAX ID #: _____

7. AMOUNT OF STATE FUNDS REQUESTED:

FISCAL YEAR 2018: \$ 707,350

8. STATUS OF SERVICE DESCRIBED IN THIS REQUEST:

- NEW SERVICE (PRESENTLY DOES NOT EXIST)
- EXISTING SERVICE (PRESENTLY IN OPERATION)

SPECIFY THE AMOUNT BY SOURCES OF FUNDS AVAILABLE AT THE TIME OF THIS REQUEST:

STATE \$ 0

FEDERAL \$ 0

COUNTY \$ 0

PRIVATE/OTHER \$ 0

CAROLINE KILLHOUR, EXECUTIVE DIRECTOR

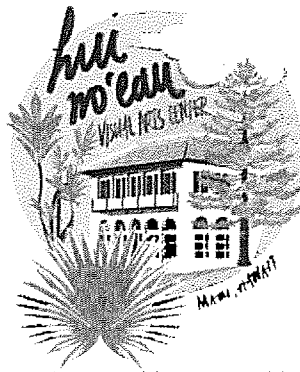
NAME & TITLE

1/19/2017
DATE SIGNED



RECEIVED

1/20/17 *mw*



2841 Baldwin Avenue Makawao, Hawaii 96768
(808) 572-6560 • info@huinoeau.com • huinoeau.com

January 19, 2017

Senate Committee on Ways and Means
State Capitol, Rm. 207
Honolulu, HI 96813
Attn: GLA

RE: FY 2018 GLA CIP Proposal
Safety, accessibility, and sustainability at Hui No'eau Visual Arts Center

Dear Senate Committee on Ways and Means Committee Chair Jill N. Tokuda, Vice Chair Donovan M. Dela Cruz & Committee Members,


Please find Hui No'eau Visual Arts Center's FY 2018 GLA CIP proposal and supporting materials enclosed.

This project addresses the Hui's critical need for handicap and/or wheelchair accessible pathways and restrooms, improving lighting in public use spaces and parking areas, repairing and preserving historic buildings to prevent water damage, and completing the Hui's energy efficiency initiatives.

As the Hui celebrates Kaluanui's centennial year in 2017, the reach of the organization's mission is greater than ever before. Completion of this important work will result in greater accessibility as well as cost savings for the organization, which frees up additional funds to be reinvested in arts education, outreach, and scholarships to students in need of financial assistance in Maui County.

Mahalo nui to the State of Hawai'i for your consideration of Hui No'eau's FY 2018 GLA CIP proposal.

Sincerely,


Caroline Killhour
Executive Director

Celebrating 100 years of Kaluanui in 2017!

Application for Grants

If any item is not applicable to the request, the applicant should enter “not applicable”.

I. Background and Summary

This section shall clearly and concisely summarize and highlight the contents of the request in such a way as to provide the State Legislature with a broad understanding of the request. Please include the following:

1. **A brief description of the applicant's background:** Founded in 1934, the mission of Hui No‘eau Visual Arts Center is to serve the Maui County community by unlocking creativity through exceptional visual arts education and to enhance this endeavor through the preservation of the historic Kaluanui Estate. Hui No‘eau is situated on the grounds of the 25-acre Kaluanui estate, which was designed by famed Hawai‘i architect CW. Dickey and built in 1917 for its original owners Harry & Ethel Baldwin. Now, 100 years later, Kaluanui still stands in its original character as one of Maui’s most iconic legacy estates still open for visiting to the public.

As the Hui celebrates Kaluanui’s centennial year in 2017, the reach of the organization’s mission is greater than ever before. Hui No‘eau’s year-round visual arts education programs, exhibitions, open studios and community outreach efforts impact over 30,000 artists and other individuals including, youth (such as at-risk youth served by Maui Economic Opportunity), students, educators, and community members living in Maui County.

Hui No‘eau is the only art center of its kind in Maui County. The historic grounds and exhibition spaces are open to the public seven days a week with free admission. In addition to Hui No‘eau’s regular programming, the Hui collaborates with community organizations, schools and educators to serve at-risk and special needs youth or those without adequate arts education funding. The Hui also offers a robust scholarship program that enables students in need of financial assistance to participate in Hui classes, camps, field trips, and outreach programs year round. Students range in age from 2.5 years and up. **A total of 998 low-income children received financial assistance to attend classes between July 1, 2015 and December 30, 2016.**

Hui No‘eau thanks the State of Hawai‘i for generously supporting the purchase of the Hui’s historic Kaluanui estate in 2005. With your help, the Hui has ensured that this historic legacy and visual arts education remained accessible to our growing community in perpetuity. The Great Recession did not allow us to proceed with some of the needed repairs and renovation at the time of purchase. In order to continue serving our community and preserving the 100 year old Kaluanui estate for public use, circumstances require that Hui No‘eau return to the State of Hawai‘i and request support of the following capital improvement projects that will result in greater safety, accessibility, and future sustainability of Hui No‘eau Visual Arts Center.

2. **The goals and objectives related to the request:** By enhancing the Hui's existing public spaces and art studios, the organization can continue to provide a safe and accessible space for all Maui residents - especially for our youth and kupuna. The Hui's conscientious stewardship effort also sends a message that Hui No'eau is committed to accountability for the land that the community worked so diligently to preserve. Completion of this important work will continue to spur increases in participation, revenue, and sustainability, all of which help the organization better serve our community by elevating the reach of the Hui's core educational mission.

The goals and objectives of this request are to increase safety, accessibility, and sustainability at Hui No'eau Visual Arts Center so that its facilities may remain available to the people of Maui County for years into the future. This includes addressing the Hui's critical need for handicap and/or wheelchair accessible pathways and restrooms, improving lighting in public use spaces and parking areas, completing the Hui's energy efficiency initiatives, and repairing and preserving historic buildings to prevent water damage. Completion of this important work will result in greater accessibility as well as cost savings for the organization, which frees up additional funds to be reinvested in arts education, outreach, and scholarships to students in need of financial assistance in Maui County.

State GIA – CIP support will assist Hui No'eau to:

- Complete energy efficiency initiatives by making Hui No'eau 100% solar powered and free up funds to be reinvested in community arts education programs;
- Provide increased services and accessibility for handicap and/or wheelchair participants;
- Install lighting for safety and accessibility to public use spaces including the Hui's lower campus, parking lots, classrooms, exhibition spaces, and restrooms;
- Prevent future damage to historic buildings by performing necessary repairs to the Hui's Main House and Matsumoto Cottage; and
- Provide a safe campus for community access to arts education, meeting spaces, art galleries, classroom spaces, and educational gardens.

3. **The public purpose and need to be served:**

The Hui is dedicated to sharing the visual arts with the entire community - ranging from improving academic performance for youth, to strengthening and transforming lives of the many we serve and to building a creative sustainable community.

Hui No'eau's Explore & Discover programs bring Maui's at-risk and in need youth to the Hui to participate in art projects led by professional teaching artists. This program serves over 500 youth annually from Maui's public schools, preschools, and community organizations including Maui Economic Opportunity, Maui Youth & Family Services, and Big Brothers & Big Sisters. These programs are offered free of charge.

Hui No'eau is the only art center of its kind on Maui, which provides our community with much needed access to over 300 visual arts education classes, workshops, youth camps, and family programs instructed by professional teaching artists from around the world each year. Students range in age from 2.5 years and up.

The art studios at Hui No'eau are the only public studios in Maui County that offer year round access to fine art equipment and technical supervision for all who participate. The organization also offers Maui County's only Open Studio Program, giving community artists and students year round access to state of the art equipment in the Hui's Jewelry, Ceramics, Printmaking, and Photography Studios. This unique and vital program supports hundreds of local artists who have established their own small businesses.

The historic grounds and exhibition spaces are open to the public seven days a week with free admission. The gardens serve as an educational centerpiece in the Maui community, offering a fully accessible, vital open space for residents to come, learn and experience the visual arts and Maui history.

- 4. Describe the target population to be served:** Hui No'eau's year-round visual arts education programs, exhibitions, open studios and community outreach efforts impact over 30,000 artists, youth, students, educators, and community members in Maui County each year. Students range in age from 2.5 and up. Hui No'eau offers over 300 classes each year that are designed to meet the needs of ALL ages and artistic abilities. In FY16, Hui No'eau served 1,449 youth in keiki art classes, camps, field trips and outreach programs. The organization served 2,031 adults through its Open Studios, adult art classes, and Visiting Artist programs. The Hui served 25,491 local artists, their families, and the community through its Exhibition Program in FY16 and this number continues to grow each year.

The Hui also offers a robust scholarship program that enables students in need of financial assistance to participate in Hui classes, camps, field trips, and outreach programs year round. A total of 998 Maui youth received financial assistance to attend classes, camps, and family workshops between July 1, 2015 and December 30, 2016. In the same time period, 50 adult students received financial assistance to participate in Family programs alongside their children.

Hui No'eau collaborates with community organizations, schools and educators to target and better serve at-risk and special needs youth or those without adequate arts education funding. This includes partnerships with Baldwin High School, Maui High School, all of Maui's early childhood education preschools and groups, Maui Economic Opportunity, Maui Youth & Family Services, and Big Brothers, Big Sisters. We do not have any formal relationship with state educational programs and we serve as a site for field trips and for artists visiting in classrooms.

- 5. Describe the geographic coverage:** The Hui's accessible location and free admission allows the organization to serve all of Maui County as a public space and visual arts

education resource. Hui No'eau's programs impact students of all ages from the all over Maui County, including regular students from Hana, Lahaina and Kihei.

Hui No'eau has increased outreach programs and collaborations with organizations and schools to better serve at-risk and special needs youth and those without access to the arts in school, after school, and/or at home. The Hui's outreach and field trip programs increase geographic reach by bringing students to the Hui from all over Maui County – preschool through high school - to the Hui for arts education field trips. One student from Maui High School had never left the Kahului/Wailuku area in his whole life until given the opportunity to participate in a free field trip to the Hui in 2016, at which he and his peers learned the process of printmaking with guidance from visiting teaching artists from New York and Honolulu. This exposes Maui's youth to the highest quality visual arts instruction from around the world – an opportunity students will not find anywhere else on Maui.

II. Service Summary and Outcomes

The Service Summary shall include a detailed discussion of the applicant's approach to the request. The applicant shall clearly and concisely specify the results, outcomes, and measures of effectiveness from this request. The applicant shall:

1. Describe the scope of work, tasks and responsibilities;

The scope of work, tasks and responsibilities of this request are to increase safety, accessibility, and sustainability at Hui No'eau Visual Arts Center so that its facilities may remain available to the people of Maui County for years into the future. This includes addressing the Hui's critical need for handicap and/or wheelchair accessible pathways and restrooms, improving lighting in public use spaces and parking areas, completing the Hui's energy efficiency initiatives, and repairing and preserving historic buildings to prevent water damage. Completion of this important work will result in greater accessibility as well as cost savings for the organization, which frees up additional funds to be reinvested in arts education, outreach, and scholarships to students in need of financial assistance in Maui County.

Funding requested for our FY 2018 GIA CIP of \$707,350 would complete the following:

Safety and Accessibility: \$380,000

- a) Grading and paving a new pathway and installing lighting to the lower campus restrooms, Jewelry Studio, Ceramic Studio, Glassblowing Studio, and Children's Studio for increased safety and wheelchair accessibility between the Hui's upper and lower campus for those who are on the Hui campus after dark for art classes, open studios, community art events, artist lectures, exhibitions, and/or private events.

- b) Install ADA parking stalls and a wheelchair ramp for a safe and accessible pathway from the Hui's parking lot to the Main House, where the Hui holds exhibitions, community art events, and private events.
- c) Light existing lower parking lot for safety and accessibility for artists, students, and visitors who are on the Hui campus after dark for art classes, open studios, community art events, artist lectures, exhibitions, and/or private events.
- d) Add ADA compliant restroom to Main House. Installation of an ADA Restroom in the Hui's Main House will increase accessibility to all handicap visitors and students. The restroom will remain in the line with the State Historic Society's requirements for rehabilitating historic spaces. Now, to use an ADA bathroom, a person has to get into their car and drive around to the back of the house.

Energy Efficiency and Reinvestment: \$137,350

- e) Hui No'eau has successfully raised \$200,000 to complete energy efficiency and sustainability improvements to the Hui's 100-year-old Kaluanui estate. The Hui is now requesting the remaining funds needed to complete these projects, which will assist the Hui in its energy efficiency and sustainability efforts. These projects will result in an estimated \$100,000 savings for the organization over 10 years, freeing up these funds to be invested in additional scholarships to students in need of financial assistance.

At this time, the Hui must complete the infrastructure necessary to install underground cable service and convert all three utilities (electric, phone, and cable plus internal network) to accommodate all areas of the Hui campus. Converting the Hui campus to underground cable service will effectively connect each of the Hui's artist studios, classrooms, exhibition spaces, media lab, and administrative offices as well as the Hui's future Woodworking & Innovation Center and new ceramics building. An internal network will enable the Hui to engage off-site participants from locations such as Hana and Molokai by streaming instructional videos, posting blogs, and presenting collaborative lessons by professional Teaching Artists and Visiting Artists. This infrastructure will also greatly increase the functionality and safety of the property and preserve the original aesthetics of the historic, 100-year old Kaluanui estate.

Hui No'eau has completed 80% of its energy efficiency initiative by installing photovoltaic to successfully power the Hui's Jewelry Studio, Ceramic Studio, Children's Studio, Main House, exhibition spaces, and administrative offices. This funding will allow the Hui to connect its remaining buildings (Matsumoto Cottage, Visiting Artist Cottage & Print Studio) and main parking area to existing photovoltaic panels, resulting in a 100% solar powered Hui campus and increased energy independence.

Preservation of Historical Spaces: \$190,000

- f) Replace rotted dry wood in window sashes and repair historic doors. Repairing and replacing dry wood in the Hui’s original window sashes prevents water damage in the original walls of the historic structures. Repairing historic doors provide ease of access for all visitors and students. If these repairs are done now, this will ensure continued and uninterrupted access to the historic building, its classrooms, exhibition spaces, and meeting spaces for many years to come.
- g) Re-roof original Matsumoto Cottage. Hui No’eau’s historic Matsumoto Cottage is over 100 years old and is currently in need of a new roof. This will reinforce safety and accessibility for our larger community. If these repairs are done now, this will ensure continued and uninterrupted access to the historic building, its classrooms, and meeting spaces for many years to come.

2. Provide a projected annual timeline for accomplishing the results or outcomes of the service:

First Quarter:	Second Quarter:	Third Quarter:	Fourth Quarter:
Initiation work with State agency is set and State contract is executed. Complete Energy Efficiency Projects and begin work on Safety & Accessibility. First quarter report is submitted to State agency.	Safety & Accessibility work continues & monthly progress is monitored. Begin Preservation work. Second quarter report is submitted to State agency.	Safety & Accessibility work continues and progress is monitored. Preservation work is completed. Third quarter report is submitted to State agency.	All proposed projects are completed. Final report is submitted to State agency.

3. Describe its quality assurance and evaluation plans for the request. Specify how the applicant plans to monitor, evaluate, and improve their results:

Quality assurance will be monitored by the Hui’s Executive Director through weekly progress checks with contracted vendors for the work to be completed.

The Executive Director reports progress and discusses any questions regarding the work to be completed including plans to improve results, if needed, with the

Hui's architect and Facilities Committee members on a weekly basis, or more frequently as needed.

The Hui's Facilities Committee Chair prepares and presents evaluation reports and, if needed, plans for improvement to the Hui Board of Directors at its regularly scheduled meetings throughout the year, or more frequently as needed.

In addition the extensive Hui monitoring and evaluation process, monitoring by various government agencies responsible for signing off on various elements of the project will provide proof that project completion was finished in a safe and legal manner.

- 4. **List the measure(s) of effectiveness that will be reported to the State agency through which grant funds are appropriated (the expending agency).** The measure(s) will provide a standard and objective way for the State to assess the program's achievement or accomplishment. Please note that if the level of appropriation differs from the amount included in this application that the measure(s) of effectiveness will need to be updated and transmitted to the expending agency.

Regular reports to the state agency that will be managing the grant will be provided to that agency by Hui No'eau and its contractors to assess the successful progress and achievements of the project. These will include the progress achieved within the work plan outlined above by quarter.

III. Financial

Budget

- 1. **The applicant shall submit a budget utilizing the enclosed budget forms as applicable, to detail the cost of the request.**

Please see enclosed budget forms.

- 2. **The applicant shall provide its anticipated quarterly funding requests for the fiscal year 2018.**

Quarter 1	Quarter 2	Quarter 3	Quarter 4	Total Grant
\$175,350	\$190,000	\$190,000	\$152,000	\$707,350

- 3. **The applicant shall provide a listing of all other sources of funding that they are seeking for fiscal year 2018.**

Hui No'eau will not be requesting any additional funds for this capital project in fiscal year 2018.

- 4. The applicant shall provide a listing of all state and federal tax credits it has been granted within the prior three years. Additionally, the applicant shall provide a listing of all state and federal tax credits they have applied for or anticipate applying for pertaining to any capital project, if applicable.**

Federal Tax Credits granted:
Healthcare 6/30/14: \$1,019.87
Healthcare 6/26/15: \$992.82

Hui No'eau has not applied for/does not anticipate applying for any federal or state tax credits pertaining to any capital projects.

- 5. The applicant shall provide a listing of all federal, state, and county government contracts and grants it has been and will be receiving for program funding.**

- Hawai'i State Foundation on Culture & the Arts (2013-2014): \$4,676 for Youth Arts Education
- Hawai'i State Foundation on Culture & the Arts (2014-2015): \$3,825 for Youth Arts Education
- Hawai'i Tourism Authority/County of Maui CPEP (2014): \$12,000 for Hui No'eau's Cultural Arts Program
- Hawai'i Tourism Authority/County of Maui CPEP (2015): \$12,000 for Hui No'eau's Fire & Art at the Hui Program
- Hawai'i Tourism Authority/County of Maui CPEP (2016): \$10,000 for Hui No'eau's Art with Aloha Program
- Hawai'i Tourism Authority/County of Maui CPEP (2016): \$10,000 for Hui No'eau's Exhibitions Program
- County of Maui Office of Economic Development: \$42,000 for Hui No'eau's Leveraging Electronic Efficiency Initiative – pending final approval
- Hawai'i Tourism Authority CEP Program: \$10,000 – pending final approval

- 6. The applicant shall provide the balance of its unrestricted current assets as of December 31, 2016.**

Unrestricted assets as of 12/31/16: \$73,209.60.

IV. Experience and Capability

A. Necessary Skills and Experience

The applicant shall demonstrate that it has the necessary skills, abilities, knowledge of, and experience relating to the request. State your experience and appropriateness for providing the service proposed in this application. The

applicant shall also provide a listing of verifiable experience of related projects or contracts for the most recent three years that are pertinent to the request.

Since purchasing the historic 25-acre Kaluanui estate from Maui Land & Pineapple Co. in 2005, Hui No'eau has successfully strategized, initiated, overseen, and completed numerous preservation and maintenance projects. In the most recent three years:

- 2015: The Hui completed restoration and rehabilitation of the Hui's historic garage and Printmaking Studio which included:
 - Repairing cracks in the exterior walls of historic garage/Print Studio to prevent water from penetrating building. Interior and exterior finish-strip, prime and paint of the historic garage with same color, high quality two coats of paint. All windows (41). Including sanding and prep work.
 - Repair Rolling Doors in Print Shop. Have repairs made to the wood components and have the metal support/track system rebuilt or replaced. Four doors, each 72SF hung by metal track and supported by rail set in the concrete.
 - Termite and pest eradication with environmentally sensitive materials. Eliminate ground to wood contact and keep tunnels knocked down.
 - Rehabilitate working Print Studio (historic garage) for efficiency and effectiveness and refurbish to allow the use of non-hazardous materials.
 - Print studio sink re-face, clean, and prep existing antique sink for application of 2-part porcelain refinish product, apply as per manufacturer, reassemble fixtures.
 - Extend existing basement studio wall to meet sloped ceiling, wood stud and sheet rock composition, joint tape and compound finish.
- In 2015 – 2016, Hui No'eau began work on its Electrical and Energy Efficiency initiatives, which includes:
 - Installation of an 11,400 watt PV system will provide 100% electrical coverage to support these functions (completed).
 - Installation of an 11,400 watt PV system atop the Jewelry & Metalsmithing Studio to supply power to the Children's Studio, Ceramics Studios, and future Woodworking and Innovation Studio (completed).
 - Installation of an additional 5,130 watt PV system to supply 100% of the power needed to make the Hui's Jewelry & Metalsmithing Studio self sustaining (completed).
 - Provide MECO, Hawaiian Telecom and CATV underground conversion from Kaluanui Rd. utility pole location, complete through campus to the Main House.
 - Install hand holes, conduit, and concrete encasement
 - Convert two existing meters at Matsumoto Cottage to underground service meters. Provide MECO, Hawaiian Telecom with hand conduit, concrete jacket to Matsumoto Cottage and Main House

- Upgrade ceramics studio electrical service to meet standard code
- Connect Hui campus with underground cable Internet service
- Bring administrative offices away from DSL 1 Mbps download and upload to cable 100 Mbps download and 10 Mbps upload.
- Utilize cable Internet speed to increase access to the Hui's registration and donor management database.

B. Facilities

The applicant shall provide a description of its facilities and demonstrate its adequacy in relation to the request. If facilities are not presently available, describe plans to secure facilities.

Hui No'eau's 25-acre Kaluanui estate consists of 26,148 Square Feet of various facilities, including original housing structures now 100 years old, a stable, a visitor's cottage, and a garage that have since been transformed into fully functioning working artist studios, exhibition galleries and classrooms. The Hui has also built several new studios, including our Jewelry and Metalsmithing Studio, Ceramics Studio, Glassblowing Studio, Printmaking Studio, Children's Studio (multi – purpose classroom space), Media Lab, Photography Studio, and Garden Studio (multi-purpose classroom space). Each of these world-class artist studios provides an accessible, safe and efficient space for artists, students and community members to explore the visual arts and build skills in their craft. Hui No'eau provides parking and restrooms for all visitors and participants.

V. Personnel: Project Organization and Staffing

A. Proposed Staffing, Staff Qualifications, Supervision and Training

The applicant shall describe the proposed staffing pattern and proposed service capacity appropriate for the viability of the request. The applicant shall provide the qualifications and experience of personnel for the request and shall describe its ability to supervise, train and provide administrative direction relative to the request to ensure successful and timely completion of the proposed project.

There will be staff and volunteer management and reporting requirements for all contracts. The Hui's Executive Director will be the supervisor of all contracts and will monitor day-to-day operations with support and consult from the Hui's contracted architect, volunteer Facilities Committee Chair, and volunteer facilities committee members.

- Caroline Killhour has been the Executive Director of Hui No'eau since 2007. With over 20 years of executive level experience, Caroline brings a firm and extensive background in management, marketing, community engagement, and educational leadership. Caroline holds a BFA from Philadelphia's Tyler School of Art, an Associate Degree in Design from New York City's Fashion Institute of Technology, is a post-graduate student of the Maine College of

Art, and the University of Chicago's Graduate School of Business. Caroline brings past experience from L.L Bean where she was the Director of Technical Design. Her responsibilities included product research, testing, and commercialization and she was responsible for quality assurance for \$1 billion of annual product revenue. Caroline has developed vital relationships with foundations that have provided the financial means to restore and maintain both the Hui's historic main home and print studio. Caroline continually takes creative measures to ensure the Hui's longevity. She has fostered relationships with key supporters who now provide much-needed funds for Hui scholarships and outreach programs. Caroline has been instrumental in bringing the Hui's campus into the 21st century by leading electronic and energy efficiency initiatives that have resulted in the entire campus being nearly 100% solar powered. Caroline's focus on STEAM education and technology have helped the Hui expand its educational offerings to include digital media, stop frame animation for youth, and concepts of architectural design. As Executive Director, Caroline will work closely with the Hui's architect, contractors, and Facilities Committee to secure proposals and estimates and manage and provide administrative direction and coordination of the proposed project.

- John W. Hoxie Jr. – Vice President, Hui Board of Directors: John W. Hoxie, Jr. is the retired VP of HC&S. Recognizing the importance in stewarding the historic estate, John pioneered the establishment of the Kaluanui Preservation & Stewardship Program with the Facilities Master Plan Committee in order to protect the history and natural beauty of Kaluanui as well as promote responsible use of the estate. As current Chair of the Facilities Committee, John takes personal responsibility in safeguarding a successful future for the Hui by overseeing the preservation of the estate and pro-actively exploring opportunities to meet the needs of our community through facility and grounds improvements and expansions.
- Don Bernshouse: Esteemed architect Don Bernshouse will be consulting in the proposed project to ensure that the project is completed in a manner that maintains the beauty and preservation of the Hui's historic Kaluanui estate and also remains in compliance with the State Historic Society's requirements for rehabilitating historic spaces. Born in Waimea, Kauai, Hawaii, Bernshouse graduated from Punahou School, and is a Graduate of the Board of Architecture, University of Oklahoma 1963. He was mentored by Bruce Goff and Herb Greene, licensed in New York State in 1968. He was licensed in Hawai'i in 1970 and has since been in private practice.
- Hunton Conrad: Hui Board of Director Member & owner of Hunton Conrad & Associates Inc. - Architecture & Landscape Design. With Hunton's professional background and experience with County permitting, he will assist the Hui in its planning for the future with a focus on architecture and landscaping for the proposed project.

B. Organization Chart

The applicant shall illustrate the position of each staff and line of responsibility/supervision. If the request is part of a large, multi-purpose organization, include an organization chart that illustrates the placement of this request.

Please find organizational chart enclosed.

C. Compensation

The applicant shall provide the annual salaries paid by the applicant to the three highest paid officers, directors, or employees of the organization by position.

Executive Director: \$96,450

Program Director & Editor in Chief of Create: \$55,175

Development, Membership & Marketing Manager: \$47,570

VI. Other

A. Litigation

The applicant shall disclose any pending litigation to which they are a party, including the disclosure of any outstanding judgments. If applicable, please explain.

Hui No'eau Visual Arts Center has no pending litigation or outstanding judgments.

B. Licensure or Accreditation

The applicant shall specify any special qualifications, including but not limited to licensure or accreditation that the applicant possesses relevant to this request.

Hui No'eau Visual Arts Center received the County of Maui Outstanding Nonprofit Small Business Award in 2016 in recognition of its outstanding achievement and contributions to the community.

Hawai'i Visitors & Convention Bureau recognizes Hui No'eau Visual Arts Center as one of Maui's historic sites of interest. Historic Hawai'i Foundation also recognizes Hui No'eau's Kaluanui estate as one of Maui's significant historic spaces.

C. Private Educational Institutions

The applicant shall specify whether the grant will be used to support or benefit a sectarian or non-sectarian private educational institution. Please see Article X, Section 1, of the State Constitution for the relevance of this question.

No, the grant will not be used to support or benefit any sectarian or non-sectarian private educational institutions.

D. Future Sustainability Plan

The applicant shall provide a plan for sustaining after fiscal year 2017-18 the activity funded by the grant if the grant of this application is:

- (1) Received by the applicant for fiscal year 2017-18, but
- (2) Not received by the applicant thereafter.

As a community needs based non-profit arts center, Hui No'eau recognizes the need to continually attract and retain business as well as revitalize and promote access to our rural, 25-acre grounds. Through diversified revenue streams and development of current and future programs at the Hui, we stabilize our financial operations and develop a more sustainable financial future. Hui No'eau is also starting a capitalization fund for ongoing maintenance to sustain future capital improvement projects. The following efforts are being made to ensure future sustainability:

- Corporate, foundation & individual supporters - 100% of donations go back into the Maui community by helping the Hui provide vital programs that promote lifelong learning in the arts.
- Class and open studio fees – The majority of revenue generated by class and Open Studio fees goes directly to teachers' salaries, studio supplies and general upkeep of the studios.
- Exhibition and gallery shop sales – The Hui's boutique and gallery exhibitions allow art lovers to purchase one-of-a-kind artist-designed works. Sales from the Gallery Shop at Kaluanui are consistently rising.
- Special events – The Hui hosts a variety of special events throughout the year including our highly anticipated annual themed gala, Art Affair, Wailea Food & Wine Celebration and Hui Holidays. 100% of funds raised at these events are used to continue operations and maintenance of the center and grounds of the historic Kaluanui estate.
- Membership – Various membership levels are available, starting at \$45/year and ranging to \$5,000+ and offer a variety of benefits.
- Rentals and miscellaneous sources – The Hui's 25-acre Upcountry estate is a wonderful venue for weddings, cocktail parties, professional development trainings, business meetings, photo shoots and other events.

E. Certificate of Good Standing (If the Applicant is an Organization)

If the applicant is an organization, the applicant shall submit one (1) copy of a certificate of good standing from the Director of Commerce and Consumer Affairs that is dated no earlier than December 1, 2016.

A Certificate of Good Standing from the Department of Commerce and Consumer Affairs dated January 10, 2017 is attached.

BUDGET REQUEST BY SOURCE OF FUNDS

Period: July 1, 2017 to June 30, 2018

Applicant: HUI NO'EAU VISUAL ARTS CENTER

BUDGET CATEGORIES	Total State Funds Requested (a)	Total Federal Funds Requested (b)	Total County Funds Requested (c)	Total Private/Other Funds Requested (d)
A. PERSONNEL COST				
1. Salaries				
2. Payroll Taxes & Assessments				
3. Fringe Benefits				
TOTAL PERSONNEL COST	\$0.00	\$0.00	\$0.00	\$0.00
B. OTHER CURRENT EXPENSES				
1. Airfare, Inter-Island				
2. Insurance				
3. Lease/Rental of Equipment				
4. Lease/Rental of Space				
5. Staff Training				
6. Supplies				
7. Telecommunication				
8. Utilities				
9				
10				
11				
12				
13				
14				
15				
16				
17				
18				
19				
20				
TOTAL OTHER CURRENT EXPENSES	\$0.00			
C. EQUIPMENT PURCHASES	\$0.00			
D. MOTOR VEHICLE PURCHASES	\$0.00			
E. CAPITAL	\$707,350.00			
TOTAL (A+B+C+D+E)	\$707,350.00	\$0.00	\$0.00	\$0.00
SOURCES OF FUNDING		Budget Prepared By:		
(a) Total State Funds Requested	\$707,350.00	CAROLINE KILLHOUR 808-572-6560 x. 30		
(b) Total Federal Funds Requested	\$0.00	Name (Please type or print) Phone		
(c) Total County Funds Requested	\$0.00	[REDACTED] 1.19.2017		
(d) Total Private/Other Funds Requested	\$0.00	[REDACTED] Date		
TOTAL BUDGET	\$707,350.00	CAROLINE KILLHOUR, EXECUTIVE DIRECTOR		
		Name and Title (Please type or print)		

BUDGET JUSTIFICATION - PERSONNEL SALARIES AND WAGES

Period: July 1, 2017 to June 30, 2018

Applicant: HUI NOEAU VISUAL ARTS CENTER

POSITION TITLE	FULL TIME EQUIVALENT	ANNUAL SALARY A	% OF TIME ALLOCATED TO GRANT REQUEST B	TOTAL STATE FUNDS REQUESTED (A x B)
Not applicable. See justification/comments.				\$ -
				\$ -
				\$ -
				\$ -
				\$ -
				\$ -
				\$ -
				\$ -
				\$ -
				\$ -
				\$ -
				\$ -
				\$ -
				\$ -
				\$ -
				\$ -
TOTAL:				\$ -
JUSTIFICATION/COMMENTS: Hui No'eau's FY 2018 GIA CIP will not be used to pay staff salaries.				

BUDGET JUSTIFICATION - EQUIPMENT AND MOTOR VEHICLES

Period: July 1, 2017 to June 30, 2018

Applicant: HUI NO'EAU VISUAL ARTS CENTER

DESCRIPTION EQUIPMENT	NO. OF ITEMS	COST PER ITEM	TOTAL COST	TOTAL BUDGETED
Not applicable. See justification/comments.			\$ -	
			\$ -	
			\$ -	
			\$ -	
			\$ -	
TOTAL:			\$ -	
JUSTIFICATION/COMMENTS: Hui No'eau's FY 2018 GIA CIP will not be used to purchase equipment				

DESCRIPTION OF MOTOR VEHICLE	NO. OF VEHICLES	COST PER VEHICLE	TOTAL COST	TOTAL BUDGETED
Not applicable. See justification/comments.			\$ -	
			\$ -	
			\$ -	
			\$ -	
			\$ -	
TOTAL:			\$ -	
JUSTIFICATION/COMMENTS: Hui No'eau's FY 2018 GIA CIP will not be used to purchase any motor vehicles				

BUDGET JUSTIFICATION - CAPITAL PROJECT DETAILS

Period: July 1, 2017 to June 30, 2018

Applicant: HUI NO'EAU VISUAL ART

FUNDING AMOUNT REQUESTED						
TOTAL PROJECT COST	ALL SOURCES OF FUNDS RECEIVED IN PRIOR YEARS		STATE FUNDS REQUESTED	OTHER SOURCES OF FUNDS REQUESTED	FUNDING REQUIRED IN SUCCEEDING YEARS	
	FY: 2015-2016	FY: 2016-2017	FY:2017-2018	FY:2017-2018	FY:2018-2019	FY:2019-2020
PLANS						
LAND ACQUISITION						
DESIGN						
CONSTRUCTION		\$140,000.00	\$707,350.00			
EQUIPMENT		\$60,000.00				
TOTAL:	\$0.00	\$200,000.00	\$707,350.00	Not applicable. See justification/comments.	Not applicable. See justification/comments.	Not applicable. See justification/comments.
JUSTIFICATION/COMMENTS: Previous years funds for this project were granted through private foundations and individual donors. State GIA CIP support will complete this project, therefore, no additional funds will be requested in FY 2017 - 2018 & no funds will be required in succeeding years.						

GOVERNMENT CONTRACTS AND / OR GRANTS

Applicant: HUI NO'EAU VISUAL ARTS CENTER

Contracts Total: 52,000

	CONTRACT DESCRIPTION	EFFECTIVE DATES	AGENCY	GOVERNMENT ENTITY (U.S. / State / Haw / Hon / Kau / Mau)	CONTRACT VALUE
1	Leveraging Electronic Efficiency Initiative - Electrical Infrastructure	Pending Final Approval	County of Maui Office of Economic Development	MAUI	\$42,000.00
2	Hui No'eau Exhibitions Program	Pending Final Approval	Hawai'i Tourism Authority	STATE	\$10,000.00
3					
4					
5					
6					
7					
8					
9					
10					
11					
12					
13					
14					
15					
16					
17					
18					
19					
20					
21					
22					
23					
24					
25					
26					
27					
28					
29					
30					

**DECLARATION STATEMENT OF
APPLICANTS FOR GRANTS PURSUANT TO
CHAPTER 42F, HAWAII REVISIED STATUTES**

The undersigned authorized representative of the applicant certifies the following:

- 1) The applicant meets and will comply with all of the following standards for the award of grants pursuant to Section 42F-103, Hawaii Revised Statutes:
 - a) Is licensed or accredited, in accordance with federal, state, or county statutes, rules, or ordinances, to conduct the activities or provide the services for which a grant is awarded;
 - b) Complies with all applicable federal and state laws prohibiting discrimination against any person on the basis of race, color, national origin, religion, creed, sex, age, sexual orientation, or disability;
 - c) Agrees not to use state funds for entertainment or lobbying activities; and
 - d) Allows the state agency to which funds for the grant were appropriated for expenditure, legislative committees and their staff, and the auditor full access to their records, reports, files, and other related documents and information for purposes of monitoring, measuring the effectiveness, and ensuring the proper expenditure of the grant.


- 2) If the applicant is an organization, the applicant meets the following requirements pursuant to Section 42F-103, Hawaii Revised Statutes:
 - a) Is incorporated under the laws of the State; and
 - b) Has bylaws or policies that describe the manner in which the activities or services for which a grant is awarded shall be conducted or provided.

- 3) If the applicant is a non-profit organization, it meets the following requirements pursuant to Section 42F-103, Hawaii Revised Statutes:
 - a) Is determined and designated to be a non-profit organization by the Internal Revenue Service; and
 - b) Has a governing board whose members have no material conflict of interest and serve without compensation.

Pursuant to Section 42F-103, Hawaii Revised Statutes, for grants used for the acquisition of land, when the organization discontinues the activities or services on the land acquired for which the grant was awarded and disposes of the land in fee simple or by lease, the organization shall negotiate with the expending agency for a lump sum or installment repayment to the State of the amount of the grant used for the acquisition of the land.

Further, the undersigned authorized representative certifies that this statement is true and correct to the best of the applicant's knowledge.

CAROLINE KILLHOUR
(Typed Name of Individual or Organization)


(Signature)

1/19/2017
(Date)

CAROLINE KILLHOUR
(Typed Name)

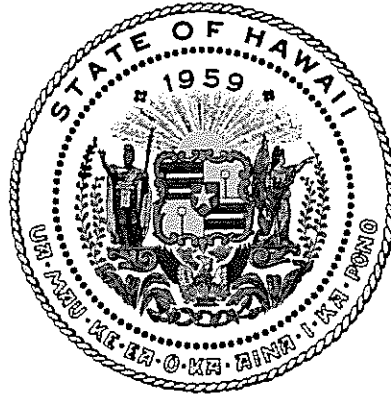
EXECUTIVE DIRECTOR
(Title)



2841 Baldwin Avenue Makawao, Hawaii 96768
(808) 572-6560 • info@huinoeau.com • huinoeau.com

ATTACHMENTS

1. Certificate of Good Standing from the Department of Commerce and Consumer Affairs
2. Hui No'eau Organization Chart
3. Keiki Mahalo Letters to Hui No'eau (2 pages)
4. Testimonials from students in Baldwin High School's Academy of Informational Technology (AIOT) who participated in one of the Hui's outreach programs with Hui Visiting Artist & Yale University School of Art Professor Johannes DeYoung. (2 pages)



Department of Commerce and Consumer Affairs

CERTIFICATE OF GOOD STANDING

I, the undersigned Director of Commerce and Consumer Affairs of the State of Hawaii, do hereby certify that

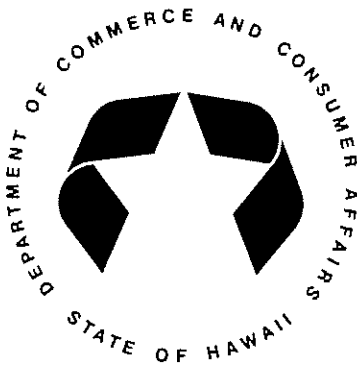
HUI NOEAU

was incorporated under the laws of Hawaii on 10/06/1964 ; that it is an existing nonprofit corporation; and that, as far as the records of this Department reveal, has complied with all of the provisions of the Hawaii Nonprofit Corporations Act, regulating domestic nonprofit corporations.

IN WITNESS WHEREOF, I have hereunto set my hand and affixed the seal of the Department of Commerce and Consumer Affairs, at Honolulu, Hawaii.

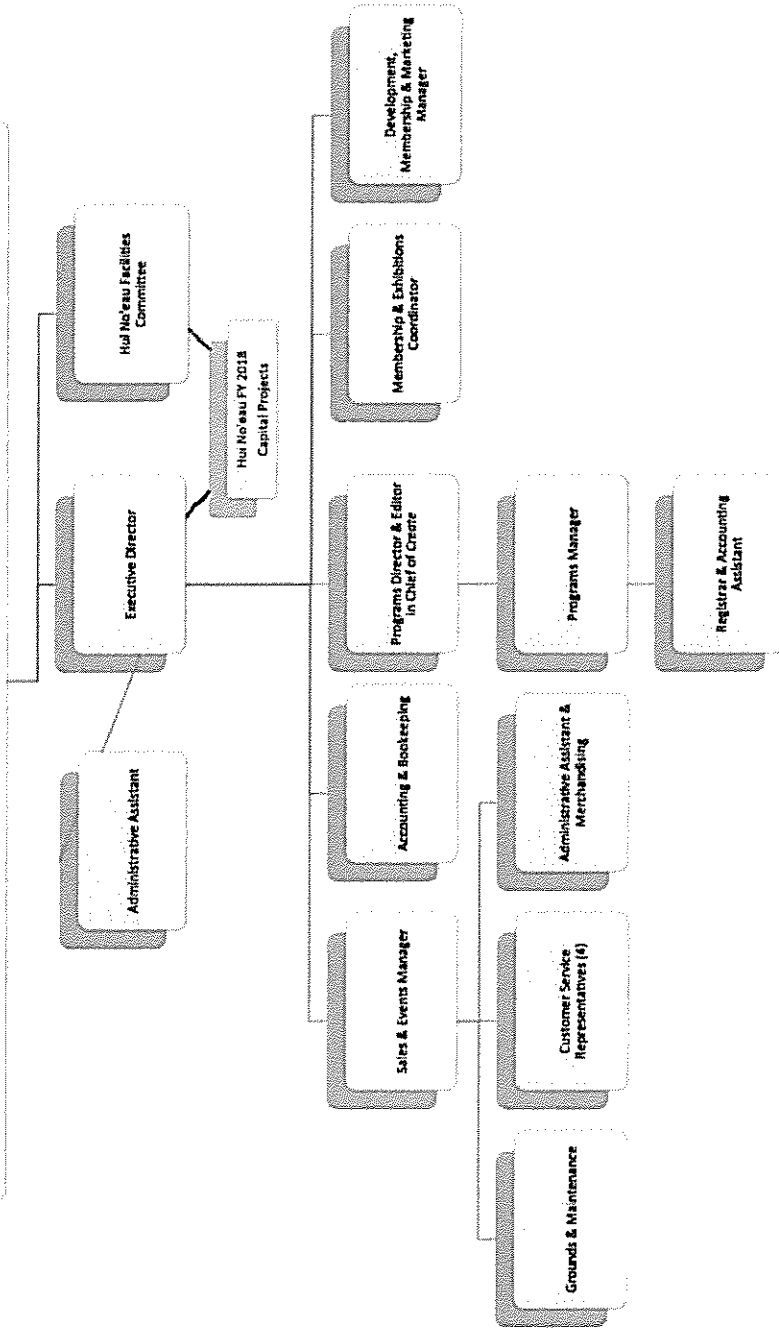
Dated: January 10, 2017

Director of Commerce and Consumer Affairs



BOARD OF DIRECTORS

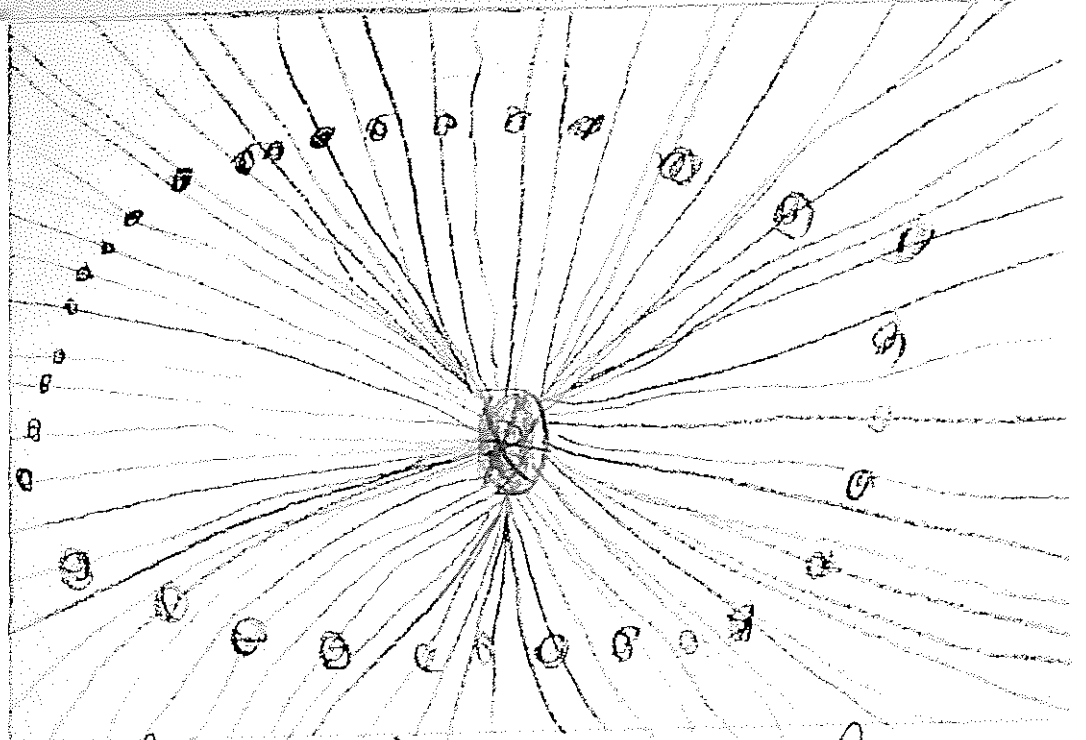
OFFICERS: President Cheryl Tibbon, Vice President John W. Hoste, Jr., Vice President Robert Rowland, Treasurer Joan Martin, Assistant Treasurer Colleen O'Shea Brady, Assistant Treasurer Robert Stoner, Secretary Cathy Pacion-James, Assistant Secretary Carolyn Schaefer Gray, Assistant Secretary Clay Suberland
DIRECTORS: Diane Bevilacqua, Sarah Brethoff, Hunton Conrad, Kasal Friesland, Shannon Hoestra, Jorette Kionaka, Merry Palmer, Josh Stone





Dear Ms. Locke
I love the
lessons you
taught us
Love

Nae



thank you for
the art lesson
about flower.

Benton

The whole experience with Johannes was amazing and fun. He came to our Digital Media Directed Studies class in the first quarter, and taught us how to do stop-motion, and how to use the power of photography to our advantage. Because we only had that class period to work, we really pushed ourselves to not only meet the deadline, but to make the best video that we could possibly make. I learned a lot through his workshop and am grateful for the experience. (Chelsea Kau)

This workshop helped me gain experience about stop motion and more video skills. Being able to work with Johannes one on one helped each student clearly understand the idea of stop motion video. Overall this workshop was educational and fun for our digital media class. (Courtney Holland)

Learning how to use stop motion with Johannes was a great experience. I learned about little things that make big differences like changing the length of the frames. By changing the length of frames changed not only the timing of the video, but also the feeling of it. For example, if I extended a frame, it would make it longer and press it onto the viewer to show the importance of that frame is. These little things make up the entire video and are very important. (Jonathan You)

So while Johannes was here teaching us he showed us a lot about the workings of a stop motion film. Demonstrated what camera settings we should use and how to do efficient editing and importing. The whole stop motion sequence project was pretty interesting and i hope to apply that to future videos. (Alika Agonoy-Lopez)

What I got out of the Johannes visit was how to make a stop motion film. Also what settings to put on your camera for better quality pictures for stop motion films. The overall experience was very good and i have learned many things from him that I could use in the future.(Ezekiel Segovia)

When Johannes came, we learned about stop motion and some techniques on how to do it. It was a cool new idea to do video and it looked was pretty interesting. I hope to use this in future videos because I personally liked it. (Justin Dumlao)

During the Johanness visit we learned how to do stop motion. I have never heard of it before he introduced it to the class, and I found it very interesting. He also gave short classes on how to do animation on photoshop. I found the animation part to be the most fun because it allows you to start from nothing. He taught me a lot of new things and he was very nice. (Rachel Figueiroa)

During Johannes's workshop, we were given the challenge of creating a PSA for art education in a few days using only photos. This forced me to think outside the box to create a video using only still frames. I think that our final product was fun and creative and I had a great time making it. I learned new techniques during this workshop that I will definitely continue to use in the future. Thanks Johannes! (Shanelle Macaraeg)

I learned how to do stop motion in Final Cut with Johannes. We did an Art education video and I learned how to make the frames long and short and also how to make the still frames flow together. It was very useful in other projects and I had a lot of fun. (Warren Feike)

The whole experience with Johannes has taught me many new things and I thought it was a great experience to be able to learn about stop motion. I learned about new terms to use and to make our own music, and not use music that is already made. Learning about stop motion was amusing and I'm glad we got to learn from Johannes. Also I thought everything was interesting and enjoyed every moment of that project. (Vatu Masi)

I could say that I learned a lot when we were tasked with the creation of the art and education PSA's with Johannes. This lesson opened my eyes to the importance of Art in our lives and how the medium of film/photos can show that importance. The exercise was fun yet insightful and I really enjoyed the experience overall. I am very thankful that Johannes took time out of his busy schedule to help us with this lesson. I am also grateful for the lessons he and this experience taught me. (Drew Underwood)