

Application for Grants

If any item is not applicable to the request, the applicant should enter "not applicable".

I. Background and Summary

This section shall clearly and concisely summarize and highlight the contents of the request in such a way as to provide the State Legislature with a broad understanding of the request. Please include the following:

1. A brief description of the applicant's background;

Established in 1981, the Hawai'i Nature Center (HNC) is a 501(c)(3) non-profit organization that has been a leader in environmental education in Hawai'i for more than thirty-five years. More than one million children and adults have participated in our programs since our inception. Our mission is to foster awareness, appreciation and understanding of Hawai'i's environment and to encourage wise stewardship of the Hawaiian Islands by educating children with an interactive and immersive approach.

The Hawai'i Nature Center offers award-winning school programs to more than 15,000 children on Maui and O'ahu each year, helping to encourage environmental stewardship through hands-on investigative field study and experiences. Educational programs are primarily conducted outdoors in the field, exposing children to a range of ecosystems in watershed, forest, marsh and coastal environments.

These featured programs are conducted at a variety of field sites across Maui and O'ahu, including:

- Makiki Valley Watershed (O'ahu)
- Pu'u 'Ualaka'a State Park (O'ahu)
- USFWS Honouliuli National Wildlife Refuge (O'ahu)
- Waimānalo Beach Park (O'ahu)
- Kawainui Marsh (O'ahu)
- 'Īao Valley (Maui)
- USFWS Keālia Pond National Wildlife Refuge (Maui)

The Hawai'i Nature Center continues to shine as Hawai'i's leading environmental education organization because of its strong relationships with several private foundations, organizations and government agencies; dedicated, passionate and highly-qualified educational and administrative staff; an active group of more than 675 volunteers who contributed 5,568 hours in 2016; and, a strong demand for our science-based programs that encompass highly-valued, cutting edge curricula that are aligned with current Next Generation Science Standards. Our goal is to inspire within students, teachers and families alike a deeper appreciation for our planet, and the lessons learned at the Hawai'i Nature Center last far beyond the enrichment received.

2. The goals and objectives related to the request;

This Grant in Aid (GIA) request is for the formal creation of an HNC project that specifically targets accessibility of our programmatic offerings to our community's most vulnerable populations and the expansion of our offerings to include environmental education that has therapeutic elements woven in. "The 'Ohana Project': Connecting Vulnerable & At-Risk Populations to Nature," is a request to support the expansion of existing environmental education programs to include multiple weekly offerings at Hawai'i Nature Center that connect children and families, specifically in vulnerable populations such as, but not limited to, Title One school children, children experiencing homelessness, those diagnosed with a mental health and/or substance abuse and those living at or below the poverty line, to nature in a way that helps them see nature as a coping mechanism for the stress and discomfort they experience in everyday life while providing a firm foundation of environmental education. This grant request will partially or fully subsidize educational programming for at least 2,000 program participants between Maui and O'ahu.

"The 'Ohana Project"'s ultimate goal is to inspire an ethic of environmental stewardship among Hawai'i's underserved citizens that will protect and sustain the finite natural systems upon which we all depend while simultaneously providing a sense of deep connection to something, while utilizing these values to provide at-risk children, families and our community at large with a healthy outlet to their stress and additional coping skills to take on the challenges that they face on a daily basis.

To achieve this goal, we have three objectives:

- 1) Create and foster learning experiences that develop understanding about causal relationships between humans and their environment, and universalize those values of respect, awareness, generosity, problem-solving, patience, and perseverance to their everyday lives and provide a healthy outlet for their stress through nature while developing strong coping skills;
- 2) Engage previously underserved learners in the practice of environmental stewardship and community service, as well as a recognition of the powerful and calming influence of spending time in nature; and,
- 3) Raise participant accessibility to our programs, while increasing their awareness about the uniqueness, finite nature and value of our island's ecosystems that are essential to our environmental and economic wellbeing.

3. The public purpose and need to be served;

Hawai'i Nature Center is seeking to formalize a project that specifically engages our community's most vulnerable populations on both Maui and O'ahu with therapeutic components that highlight coping skills for program participants called ""The 'Ohana Project"". Over the decades, HNC has engaged in working with these populations intermittently as time and resources permitted, but we have never been able to formally establish a program whose primary focus is to engage and serve these populations in ways that align with our mission of connecting children and families to nature. We have previously focused on securing funding for Title One public schools that have a high population of youth who are living at or below the poverty line and receiving free and/or reduced lunch, as well as coordinating with the youth foster programs in the state to provide programs to that population.

Most recently, we successfully executed a University of Hawai'i internal review board (IRB) approved 4-day pilot program called "Mindfulness Based Outdoor Therapy" that focused on engaging children, parents, and families who are homeless or at-risk of being homeless, many of whom have been diagnosed with a mental health and/or substance abuse disorders. We pursued an outdoor mindfulness-based program on research that illustrates how these interventions help increase awareness in present moments, increase tolerance for unpleasant mental states, and enhance regulation of emotions.^{1,2} For example, involvement in a nature hike combines physical exercise, a peaceful landscape, and the opportunity for a positive and cooperative interaction with fellow hiker participants and with nature. This time spent hiking facilitates mindfulness by providing participants a unique and unfamiliar environment that requires increased awareness and attention.

During our pilot program, we observed an increased level of positive interaction between participants and among participants with HNC staff. We also saw decreases in stress and anxiety levels as the program continued through the day. Since the completion of the 4-day pilot program, participants have even returned to the HNC on a weekly basis, busing from as far away as Salt Lake to explore and walk the trails in Makiki Valley instead of engaging in other, less healthy behaviors.

With the success of this pilot program in 2016, we experienced firsthand the conclusions reached by other researchers, that therapeutic interventions can be all the more effective when the client is engaged in a natural setting.^{3,4} Specifically, connecting marginalized populations with the stress-reducing natural environment provided a positive experience of 'nature therapy' for the program participants and a healthy coping alternative for many of them to continue to utilize in their daily routines. "The 'Ohana Project" and would expand upon the success of this pilot and create a comprehensive list of

¹ Russell, K. C. (2001). What is wilderness therapy? *Journal of Experiential Education*, 24, 70-79.

² Beringer, A. (2004). Toward an ecological paradigm in adventure programming. *Journal of Experiential Education*, 27, 51-66.

³ Fredrickson, B. L. & Branigan, C. A. (2005). Positive emotions broaden the scope of attention and thought-action repertoires. *Cognition and Emotion*, 19, 313-332.

⁴ Fredrickson, B. L. & Losada, M. F. (2005). Positive affect and the complex dynamics of human flourishing. *American Psychologist*, 60, 678-686.

programmatic offerings to our community's vulnerable populations with therapeutic components woven in as needed, regardless of ability to pay.

Included in our application are several letters of support from several partner HNC agencies and groups who have previously enjoyed Nature Center programs, as well as those organizations that serve vulnerable populations who are interested in taking part in "The 'Ohana Project". These letters can be found in Appendix A.

4. Describe the target population to be served; and

"The 'Ohana Project" would specifically target vulnerable and at-risk populations in Hawai'i to ensure that our existing programmatic offerings are accessible to all, regardless of ability to pay, as well as allowing us to formally establish programs that specifically support our community's most underserved, including but not limited, to those who live at, or below the poverty line, are experiencing homelessness, indigent children, and individuals suffering from a mental health or substance abuse diagnosis. The GIA would provide a pool of funds to support these program offerings at a free or reduced cost on a sliding scale fee to program participants that have been identified as vulnerable.

5. Describe the geographic coverage.

"The 'Ohana Project" will be available to target populations on both Maui and O'ahu. Based on client needs and organization preferences, we will have curricula for on-site programs in Makiki Valley and 'Īao Valley, as well as activities for off-site programs at partner environmental sites. HNC is also creating a traveling curriculum to host programs directly at client sites, giving them an opportunity to learn about and experience the nature that is already around them.

II. Service Summary and Outcomes

The Service Summary shall include a detailed discussion of the applicant's approach to the request. The applicant shall clearly and concisely specify the results, outcomes, and measures of effectiveness from this request. The applicant shall:

1. Describe the scope of work, tasks and responsibilities;

General Recruitment:

HNC will recruit participants through:

- Media outlets to provide information to the general public via press releases, articles, and the like.
- The web and social media to provide information and disseminate interest, including Facebook, Instagram, and the agency website.
- Direct contact, mail, and email solicitation to relevant organizations, including Partners in Care, Partners in Development, Institute for Human Services, Waikiki Health, Next Step Shelter, Ka Hale A Ke Ola, Kapalama Elementary School, King Kamehameha Elementary School, and other Title One schools on Maui and O'ahu, etc.

Curriculum Enhancement:

- Prioritize value of existing programmatic content for incorporation into "The 'Ohana Project" curriculum.
- Determine age-appropriate activities to teach stress management, stress reduction, mindfulness meditation, etc.
- Synchronize relevant age-appropriate relaxation and environmental education components into a single course for each age group.
- Create script and training documents for teaching environmental educators that review expectations and themes so the educators may prepare to lead the program.
- Generate a curriculum overview to provide to the scheduling organization to prepare them and their students for their visit.
- Make any necessary handouts and information that will be distributed during the program.

Running a Program: (Program Execution)

- Programs will be scheduled by the lead Environmental Educator. The lead Educator will also be responsible for distributing any relevant paperwork (eg. confirmation letters, invoices, introductory program activities, etc.) to the scheduling partner agency, school or organization at this time.
- Generally speaking, programs will consist of an introduction to the program, 2-4 program stations with activities such as mindfulness meditation, stress management techniques, island ecology, a community service activity, and a concluding activity. The number and variety of activities will be dependent on the participant ages, the size of the attendee group, and the program location.

Program Review & Participant Feedback:

- Create pre- and post-activity evaluations to measure individual participant's relationship to nature, mindfulness, and stress levels before and after the program.
- Review evaluations after each program—any serious issues will be addressed immediately, while program recommendations will be discussed as a whole at the end of each month and incorporated into future programs as relevant.

2. Provide a projected annual timeline for accomplishing the results or outcomes of the service;

Activities Timeline: Summer/Fall/Winter/Spring School Periods (depending on if and when funding is awarded/received)

Target Audience: At least 2,000 members of vulnerable populations, focusing primarily on youth between Maui and O'ahu

Preparation Phase (July - September 2017)

- Develop additional programmatic elements and materials, including stress reduction techniques, information regarding nature therapy, creating hand-outs, and relevant discussion questions
- Create evaluative tools to more acutely operationalize and measure the effectiveness of the program and the relationship formed between program participants and nature
- Conduct educator training about incorporating new program information into their activities, as well as teaching educators how to interact with and assist individuals from vulnerable populations
- Market the program to recruit organization and school groups to participate during the 2017 – 2018 school year, as well as provide teachers with a pre-trip orientation and resource packet as well as any needed technical assistance

Action and Reflection Phase (September – June)

- Provide half-day hands-on environmental programs that informs participants about Hawai'i's unique ecosystems and environment, as well as educates attendees about the calming and meditative opportunities available in nature
- Facilitate an environmental stewardship activity for each group that is appropriate for audience ability and setting (e.g., garbage pick-up, removing invasive plants or planting native plants)
- Evaluation sheets will be distributed to each participant to gauge their stress level and positive associations with nature

3. Describe its quality assurance and evaluation plans for the request. Specify how the applicant plans to monitor, evaluate, and improve their results; and

As curriculum enhancements are incorporated and new curriculum is developed to support engaging vulnerable populations, Hawai'i Nature Center will be reviewing and assessing the value and effectiveness of "The 'Ohana Project" program once a month, incorporating feedback from students, teachers, staff, and volunteers. An action plan is then developed to add, strengthen, or modify content, curriculum, exhibits and/or supporting material as necessary.

Evaluation is built into every aspect of our programming. Regular staff performance is monitored and evaluated through procedures that include verbal feedback by the employee's supervisor, annual written evaluations and annual self-evaluations. Equally important is feedback received from teachers whose students have participated in programs. Teachers/parents complete a written evaluation offering feedback about all aspects of our program, including quality of instruction and program content. Each attendee also has the opportunity to complete an age-appropriate evaluation regarding the course material, their experiences in nature, and the positive and therapeutic associations they may have created with nature during their time at HNC. These many evaluations are compiled and reviewed by supervisors and teaching staff, and analyzed at the end of each month to identify training and program development opportunities; comments requiring immediate attention are handled promptly by the Program Coordinators and Executive Director.

Our measure of success is derived from two sources: the participant evaluations and the teacher/parent evaluations that verify the value and effectiveness of our program and our educators in connecting these individuals to nature. Project success is best seen during the program day, as we observe participants getting involved in exciting, hands-on activities, and relaxing into a natural environment away from social triggers and stressful situations.

4. List the measure(s) of effectiveness that will be reported to the State agency through which grant funds are appropriated (the expending agency). The measure(s) will provide a standard and objective way for the State to assess the program's achievement or accomplishment. Please note that if the level of appropriation differs from the amount included in this application that the measure(s) of effectiveness will need to be updated and transmitted to the expending agency.

Effectiveness of "The 'Ohana Project" program will be measured qualitatively and quantitatively through pre- and post-test individual evaluation. These evaluations are used to measure the effectiveness of the programs and educators, as well as student take-aways from the program and their level of connectedness to nature. In addition, anecdotal and formative evidence provided by the teachers/parents and participants during the program will offer information about the observed attitudes, behaviors, and engagement of the participants. HNC will also provide

the State Agency with a list of schools that attended programs, what program they attended, how many students, and the date of the program. This will ensure that the funds were expended appropriately and reflect how vulnerable populations were able to benefit from the GIA request.

We expect that summative evaluations provided by participants and teachers/parents (of their students) will validate:

- 1) The effective use of structured hands-on, experiential activities and play to engage participants in learning and relaxing,
- 2) That participants exhibit positive social interactions with their peers and positive associations with nature in the outdoor learning environment, and
- 3) That the pre-trip orientation provided by Nature Center staff prepare attendees to link the field experience to improved individual behavior and positive associations with nature.

Overall, the written, summative evaluations collected from teachers and participants after the program will gauge how well expectations and learner outcomes were met.

III. Financial

Budget

1. The applicant shall submit a budget utilizing the enclosed budget forms as applicable, to detail the cost of the request.
2. The applicant shall provide its anticipated quarterly funding requests for the fiscal year 2018.

Quarter 1	Quarter 2	Quarter 3	Quarter 4	Total Grant
100,000	50,000	25,000	25,000	200,000

3. The applicant shall provide a listing of all other sources of funding that they are seeking for fiscal year 2018.

Hau'oli Mau Loa Foundation: HNC has been awarded \$75,000 to subsidize the provision of educational environmental programs to Title One school students aligned with this project.

4. The applicant shall provide a listing of all state and federal tax credits it has been granted within the prior three years. Additionally, the applicant shall provide a listing of all state and federal tax credits they have applied for or anticipate applying for pertaining to any capital project, if applicable.

Hawai'i Nature Center has not been granted and does not plan to apply for any state or federal tax credits.

5. The applicant shall provide a listing of all federal, state, and county government contracts and grants it has been and will be receiving for program funding.

Federal Grant from NOAA -- Exploring Kawainui: Waterbirds, Wetlands, and Watersheds (awarded \$44,042 effective October 2016 – September 2018)

6. The applicant shall provide the balance of its unrestricted current assets as of December 31, 2016.

The balance of current unrestricted assets is approximately \$3,283,120.00

IV. Experience and Capability

A. Necessary Skills and Experience

The applicant shall demonstrate that it has the necessary skills, abilities, knowledge of, and experience relating to the request. State your experience and appropriateness for providing the service proposed in this application. The applicant shall also provide a listing of verifiable experience of related projects or contracts for the most recent three years that are pertinent to the request.

Each year, Hawai'i Nature Center provides environmental education programming to over 15,000 student on O'ahu and Maui combined. These experiences come in several forms, including:

- School field trips – half-day offerings hosted both on- and off-site for elementary and middle school age students to engage in nature with environmental programs targeted to each grade level based on its required Next Generation Science Standards curriculum
- Sensational Nature Adventure Program (SNAP) – a week-long intersession day camp for children ages 6-11 to spend time off from school learning about nature.
- Community & weekend programs – single-day and weekend events designed to encourage community members of all ages to get outdoors and explore. Previous programs have included nature crafts for pre-school students to marsh & wetland clean-ups for ages 7 and up.
- Birthday parties – an outdoor celebration that includes environmental education and exploration, as well as a take-home nature craft

HNC's extensive experience promoting environmental education, especially for those public schools recognized as Title One, position the organization well to create and offer a nature and mindfulness program. In addition, the staff's extensive experience working with these underserved populations makes Hawai'i Nature Center uniquely suited to understand and meet the needs of the members of these communities.

Hawai'i Nature Center currently manages a budget of approximately \$1 million. These funds come from a variety of sources, including Hau'oli Mau Loa Foundation, Aloha United Way, Alexander & Baldwin, and many others. Taken together, these diverse funding streams come together to support the organization's primary mission of connecting children and families to nature.

The financial oversight and budget for the Nature Center is guided by detailed policies and procedures, which have been reviewed and approved by the Board of Directors. Accounts payable and receivable are managed by two third-party accountants who were hired specifically to manage revenue billings and fund disbursement. Funds are coded based on the program and/or operation they

support. This separation of duties allows for greater transparency between the accountants and the organization, as well as more accurate and robust reporting thanks to the oversight of experienced financial professionals. The accountants meet once a week to discuss budget and expenditures with the Executive Director. The Executive Director shares these budgets and conversations every other month during Board of Directors Executive Committee meetings, as well as any other time an urgent or time-sensitive financial matter is raised.

The Nature Center completes its required annual audit through C.W. Associates, a Hawai'i certified public accounting corporation who has extensive experience working with non-profits. Upon completion, this independent auditor's report are provided to the entire Board of Directors for review and approval.

B. Facilities

The applicant shall provide a description of its facilities and demonstrate its adequacy in relation to the request. If facilities are not presently available, describe plans to secure facilities.

The Hawai'i Nature Center O'ahu Campus is located at 2131 Makiki Heights Drive, Honolulu, Hawai'i. This property is leased to the Nature Center from State Parks . The Maui Campus is located at 875 'Iao Valley Road, Wailuku, Hawai'i. This land is owned by the Nature Center. As the program operator at both sites, HNC staff oversee and execute all necessary building maintenance and land upkeep. In cases where care is larger-scale or on property not owned by the Nature Center, maintenance is requested & coordinated through the Nature Center with the appropriate agencies, such as Department of Fisheries and Wildlife, City & County Department of Water Supply, and others. In addition to HNC's facilities, the agency has partnerships and maintains positive relationships with several other parks and organizations, including multiple sites owned by USFWS which allow the Nature Center to host programs, giving our organization a broader reach geographically and programmatically.

V. Personnel: Project Organization and Staffing

A. Proposed Staffing, Staff Qualifications, Supervision and Training

The applicant shall describe the proposed staffing pattern and proposed service capacity appropriate for the viability of the request. The applicant shall provide the qualifications and experience of personnel for the request and shall describe its ability to supervise, train and provide administrative direction relative to the request.

Staffing:

The primary proposed staff for “The ‘Ohana Project” will be those educators and manager already employed with the Nature Center. The Executive Director has a Master’s of Social Work degree, as well as 10 years of experience working with homeless youth, homeless adults, and those experiencing mental health and substance abuse disorders. The Curriculum Specialist has 15 years experience at HNC both educating children and young adults from a variety of backgrounds and in curriculum development.

The educators who will implement and oversee programming for “The ‘Ohana Project” have a combined 30ears of experience as environmental educators. The evaluation and measurement tools will be created by our Grant Development Manager, who has extensive experience in both quantitative and qualitative data collection. “The ‘Ohana Project”

The Grant Manager has five years of experience creating reliable and valid survey metrics, designing surveys, and collecting responses into useful action items. This knowledge will help HNC learn as much as possible from its participants to improve “The ‘Ohana Project” program material and participant experiences.

Please refer to Appendix B for complete copies of resumes for these employees.

Supervision & Training:

Curriculum development and training of educators will be the primary focus of the first six months of the grant award. This training will include increasing awareness and expectations of how to engage these underserved populations.

The Nature Center will continue to monitor and evaluate its employee’s performance as it has in the past, with annual performance evaluations. In addition to this formal and written review process, Program Coordinators have bi-weekly meetings with head administrative staff to discuss questions, issues, or to address other programmatic needs.

B. Organization Chart

The applicant shall illustrate the position of each staff and line of responsibility/supervision. If the request is part of a large, multi-purpose organization, include an organization chart that illustrates the placement of this request.

Please refer to the attached organization chart.

C. Compensation

The applicant shall provide the annual salaries paid by the applicant to the three highest paid officers, directors, or employees of the organization by position.

The annual salaries for the three highest-paid organization employees are:

Executive Director – \$90,000.00

Volunteer & Operations Manager – \$53,200.00
Grant Development Manager – \$46,248.00

VI. Other

A. Litigation

The applicant shall disclose any pending litigation to which they are a party, including the disclosure of any outstanding judgement. If applicable, please explain.

Not applicable.

B. Licensure or Accreditation

The applicant shall specify any special qualifications, including but not limited to licensure or accreditation that the applicant possesses relevant to this request.

Not applicable.

C. Private Educational Institutions

The applicant shall specify whether the grant will be used to support or benefit a sectarian or non-sectarian private educational institution. Please see Article X, Section 1, of the State Constitution for the relevance of this question.

Not applicable.

D. Future Sustainability Plan

The applicant shall provide a plan for sustaining after fiscal year 2017-18 the activity funded by the grant if the grant of this application is:

- (1) Received by the applicant for fiscal year 2017-18, but
- (2) Not received by the applicant thereafter.

To continue to support “The ‘Ohana Project”, HNC will apply for additional grants through other organizations. Possible future grants could be funded through Hogan, Weinberg, and several other agencies. We also anticipate being able to receive additional funding from granting organizations who have supported us previously because of this program’s additional focus on vulnerable populations. Because the general curriculum, evaluation metrics, and start-up infrastructure costs will already be in place from this GIA, future grants will only be needed to maintain educator staffing and

nominal supply costs. This decreased operating cost will allow our organization to only require applying for smaller grants with lower award values.

E. Certificate of Good Standing (If the Applicant is an Organization)

If the applicant is an organization, the applicant shall submit one (1) copy of a certificate of good standing from the Director of Commerce and Consumer Affairs that is dated no earlier than December 1, 2016.

Please see HNC's Certificate of Good Standing attached.

ATTACHMENTS

- Budget Forms
- Government Contracts and/or Grants
- Declaration Statement
- Organizational Chart
- DCCA Certificate of Good Standing
- Attachment A: Letters of Support
- Attachment B: Resumes

BUDGET REQUEST BY SOURCE OF FUNDS

Period: July 1, 2017 to June 30, 2018

Applicant: Hawaii Nature Center (for The 'Ohana Project)

BUDGET CATEGORIES	Total State Funds Requested (a)	Total Federal Funds Requested (b)	Total County Funds Requested (c)	Total Private/Other Funds Requested (d)
A. PERSONNEL COST				
1. Salaries	136,438	30,675		56,730
2. Payroll Taxes & Assessments (7.65%)	10,438	2,920		5,401
3. Fringe Benefits (12%)	16,373	4,581		8,472
TOTAL PERSONNEL COST	163,248	38,176	0	70,603
B. OTHER CURRENT EXPENSES				
1. Airfare, Inter-Island	4,650	1,025		2,171
2. Insurance	4,200	925		1,961
3. Lease/Rental of Equipment	3,000	661		1,401
4. Lease/Rental of Space	0	0		0
5. Staff Training	2,170	478		1,013
6. Supplies	5,360	1,181		2,503
7. Telecommunication	1,450	319		677
8. Utilities	3,000	661		1,401
9. Printing, Publication, Advertisement	1,150	253		537
10. Repair & Maintenance (Bldg/Equip)	580	128		571
11. Mileage Reimbursement	540	119		252
12. Postage	652	115		243
13				
14				
15				
16				
17				
18				
19				
20				
TOTAL OTHER CURRENT EXPENSES	26,752	5,866	0	12,730
C. EQUIPMENT PURCHASES				
D. MOTOR VEHICLE PURCHASES	10,000	0		10,000
E. CAPITAL				
TOTAL (A+B+C+D+E)	200,000	44,042	0	93,333
SOURCES OF FUNDING		Budget Prepared By:		
(a) Total State Funds Requested	200,000	Jeeyun Lee (608) 629-9764		
(b) Total Federal Funds Requested	44,042	Name (Please type or print) Phone		
(c) Total County Funds Requested	0	19-Jan-17		
(d) Total Private/Other Funds Requested	93,333	Date		
TOTAL BUDGET	337,375	Jeeyun Lee, Executive Director Name and Title (Please type or print)		

BUDGET JUSTIFICATION - PERSONNEL SALARIES AND WAGES

Period: July 1, 2017 to June 30, 2018

Applicant: __Hawaii Nature Center (for The 'Ohana Project)

POSITION TITLE	FULL TIME EQUIVALENT	ANNUAL SALARY A	% OF TIME ALLOCATED TO GRANT REQUEST B	TOTAL STATE FUNDS REQUESTED (A x B)
Executive Director	1 FTE	\$90,000.00	25.00%	\$ 22,500.00
Grant Development Manager	1 FTE	\$46,350.00	25.00%	\$ 11,587.50
The Ohana Project Program Coordinator	1 FTE	\$40,000.00	100.00%	\$ 40,000.00
Environmental Educator	1 FTE	\$30,000.00	25.00%	\$ 7,500.00
Environmental Educator	1 FTE	\$30,000.00	25.00%	\$ 7,500.00
Environmental Educator	1 FTE	\$30,000.00	25.00%	\$ 7,500.00
Environmental Educator	1 FTE	\$30,000.00	25.00%	\$ 7,500.00
Environmental Educator	1 FTE	\$30,000.00	25.00%	\$ 7,500.00
Curriculum Specialist	.5 FTE	\$23,050.00	50.00%	\$ 11,525.00
Operations and Volunteer Program Manager	1 FTE	\$53,300.00	25.00%	\$ 13,325.00
				\$ -
				\$ -
				\$ -
				\$ -
TOTAL:				136,437.50
JUSTIFICATION/ COMMENTS:	Grant Development Manager has a background in research and evaluation and will create a way to collect data from participants, as well as being responsible for finding sustainable funding streams for this project. Executive Director has a Master's in Social Work and will oversee the therapeutic components of the program as appropriate.			

BUDGET JUSTIFICATION - EQUIPMENT AND MOTOR VEHICLES

Period: July 1, 2017 to June 30, 2018

Applicant: Hawaii Nature Center (for The 'Ohana Project)

DESCRIPTION EQUIPMENT	NO. OF ITEMS	COST PER ITEM	TOTAL COST	TOTAL BUDGETED
			\$ -	
			\$ -	
			\$ -	
			\$ -	
			\$ -	
TOTAL:				

Not Applicable

JUSTIFICATION/COMMENTS:

DESCRIPTION OF MOTOR VEHICLE	NO. OF VEHICLES	COST PER VEHICLE	TOTAL COST	TOTAL BUDGETED
Used Sports Utility Vehicle	1.00	\$10,000.00	\$ 10,000.00	
			\$ -	
			\$ -	
			\$ -	
			\$ -	
TOTAL:	1		\$ 10,000.00	

JUSTIFICATION/
COMMENTS:

Needed to transport vulnerable/at-risk program participants and to transport program supplies when providing off-site programmatic offerings and traveling programs.

BUDGET JUSTIFICATION - CAPITAL PROJECT DETAILS

Period: July 1, 2017 to June 30, 2018

Applicant: __Hawaii Nature Center (for The 'Ohana Project)

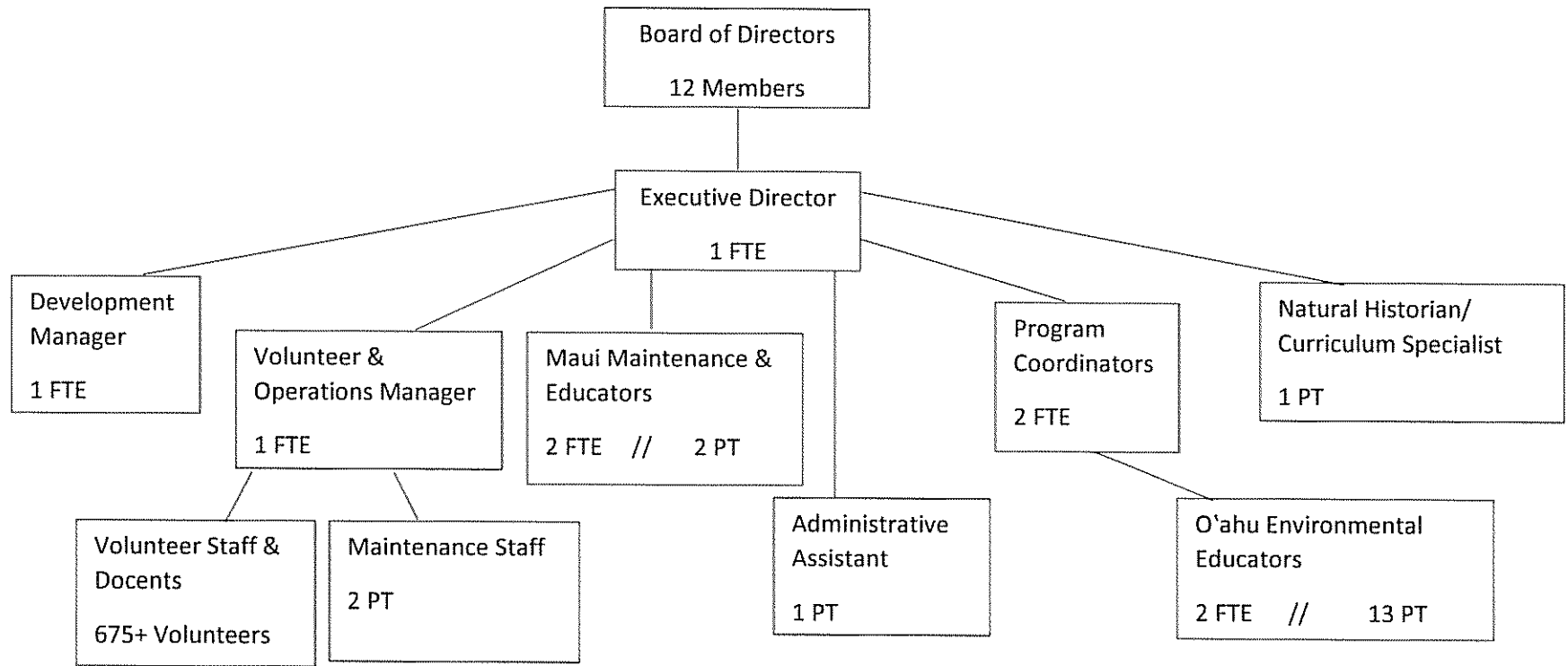
FUNDING AMOUNT REQUESTED						
TOTAL PROJECT COST	ALL SOURCES OF FUNDS RECEIVED IN PRIOR YEARS		STATE FUNDS REQUESTED	OF FUNDS REQUESTED	FUNDING REQUIRED IN SUCCEEDING YEARS	
	FY: 2015-2016	FY: 2016-2017	FY:2017-2018	FY:2017-2018	FY:2018-2019	FY:2019-2020
PLANS						
LAND ACQUISITION	<i>Not Applicable</i>					
DESIGN						
CONSTRUCTION						
EQUIPMENT						
TOTAL:						
JUSTIFICATION/COMMENTS:						

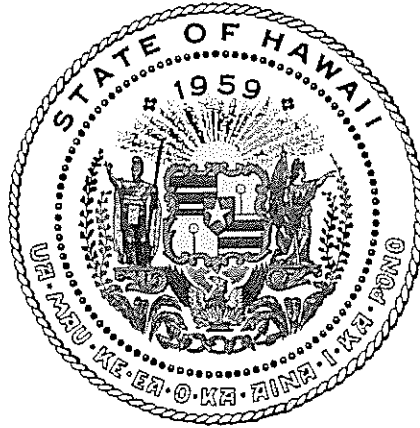
GOVERNMENT CONTRACTS AND / OR GRANTS

Applicant: Hawaii Nature Center for The 'Ohana Project

Contracts Total: 44,042

	CONTRACT DESCRIPTION	EFFECTIVE DATES	AGENCY	GOVERNMENT ENTITY (U.S. / State / Haw / Hon / Kau / Mau)	CONTRACT VALUE
1	Exploring Kawainui: Waterbirds, Wetlands & Watersheds	October 2016-September 2018	National Oceanic & Atmospheric Administration	U.S.	\$ 44,042.00
2					
3					
4					
5					
6					
7					
8					
9					
10					
11					
12					
13					
14					
15					
16					
17					
18					
19					
20					
21					
22					
23					
24					
25					
26					
27					
28					
29					
30					





Department of Commerce and Consumer Affairs

CERTIFICATE OF GOOD STANDING

I, the undersigned Director of Commerce and Consumer Affairs of the State of Hawaii, do hereby certify that

HAWAII NATURE CENTER, INC.

was incorporated under the laws of Hawaii on 06/15/1981 ; that it is an existing nonprofit corporation; and that, as far as the records of this Department reveal, has complied with all of the provisions of the Hawaii Nonprofit Corporations Act, regulating domestic nonprofit corporations.

IN WITNESS WHEREOF, I have hereunto set my hand and affixed the seal of the Department of Commerce and Consumer Affairs, at Honolulu, Hawaii.

Dated: January 12, 2017

Director of Commerce and Consumer Affairs



APPENDIX A:
LETTERS OF SUPPORT



THE QUEEN'S MEDICAL CENTER

1301 Punchbowl Street • Honolulu, Hawaii 96813 • Phone (808) 538-9011 • FAX: (808) 547-4646 • www.queens.org

January 18, 2017

Senate Committee on Ways and Means

Senator Jill N. Tokuda, Chair

Senator Donovan M. Dela Cruz, Vice Chair

Re: Hawai'i Nature Center: The 'Ohana Project: Connecting vulnerable and at-risk youth and families to nature

Dear Chair Tokuda and Vice Chair Dela Cruz,

This letter is in strong support of Hawai'i Nature Center's Grant in Aid request in the 2017 legislative session. This past fall of 2016, Queens Day Treatment Services participated in a 4-day pilot of The 'Ohana Project: Connecting vulnerable and at-risk youth and families to nature". We were pleased to be included as a Partner in the pilot in an important and meaningful effort to actively involve our local community's most vulnerable populations and teach them stress-reduction techniques through engagement in the stewardship and conservation of our islands. This was done through environmental education activities with mindfulness-based therapeutic elements woven in. The basic needs of our community's at-risk populations need to be met, but I truly believe that part of those very basic needs is also learning proper coping skills to address the extreme stressors that this population endures on a daily basis such as homelessness and mental health episodes. For if we don't do that, we as a society are setting them up for failure. The 'Ohana Project did just that in a unique and engaging approach. Some of the program participants now go back and hike at Hawai'i Nature Center and use some of the skills they have learned through the program to become better citizens and engage in a positive community activity.

The Queens Day Treatment Services benefitted greatly from this experience. Due to the positive interactions with the staff, the clients discovered new ways to manage their symptoms in the community and were able to practice those skills in a safe environment. They were also able to put into practice mindfulness skills that they had learned from treatment as well as from The 'Ohana Project staff

As the director, I can say that we would be thrilled to participate in the proposed effort to implement a long-term, place-based, environmental education program for our mutual program participants. The resources developed for The 'Ohana Project for our community's most vulnerable populations will have a significant positive benefit to the clients that we can serve together.



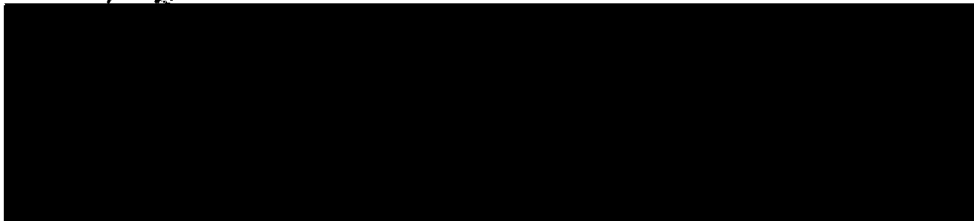


THE QUEEN'S MEDICAL CENTER

1301 Punchbowl Street • Honolulu, Hawaii 96813 • Phone (808) 538-9011 • FAX: (808) 547-4646 • www.queens.org

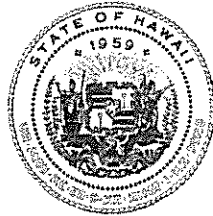
We look forward to this exciting collaboration and learning experience and humbly ask that this unique project be funded in full so that the needs of our community's most displaced populations can be addressed in a more holistic approach.

Sincerely,



Queens Medical Center
Day Treatment Services
808-691-7103

DAVID Y. IGE
GOVERNOR OF HAWAII



STATE OF HAWAII
DEPARTMENT OF LAND AND NATURAL RESOURCES
DIVISION OF FORESTRY AND WILDLIFE
1151 PUNCHBOWL STREET, ROOM 325
HONOLULU, HAWAII 96813

SUZANNE D. CASE
CHAIRPERSON
BOARD OF LAND AND NATURAL RESOURCES
COMMISSION ON WATER RESOURCE MANAGEMENT

KEKO A KALUHIWA
FIRST DEPUTY

JEFFREY T. PEARSON, P.E.
DEPUTY DIRECTOR - WATER

AQUATIC RESOURCES
BOATING AND OCEAN RECREATION
BUREAU OF CONVEYANCES
COMMISSION ON WATER RESOURCE MANAGEMENT
CONSERVATION AND COASTAL LANDS
CONSERVATION AND RESOURCES ENFORCEMENT
ENGINEERING
FORESTRY AND WILDLIFE
HISTORIC PRESERVATION
KAHOOHLAWE ISLAND RESERVE COMMISSION
LAND
STATE PARKS

January 18, 2017

The Honorable Senator Jill N. Tokuda
Chair
Senate Committee on Ways and Means
Senate District 24
Hawaii State Capitol, Room 207
Honolulu, Hawaii 96813

The Honorable Senator Donovan M. Dela Cruz
Vice Chair
Senate Committee on Ways and Means
Senate District 22
Hawaii State Capitol, Room 202
Honolulu, Hawaii 96813

Dear Chair Tokuda and Vice Chair Dela Cruz:

**Re: Hawai'i Nature Center - The 'Ohana Project:
Connecting vulnerable and at-risk youth and families to nature**

I write this letter in full support of Hawai'i Nature Center's Grant in Aid request in the 2017 legislative session. This past fall of 2016, they ran a successful 4-day pilot of The 'Ohana Project: Connecting vulnerable and at-risk youth and families to nature" that has established the need and demand for such a comprehensive program. The 'Ohana Project is a meaningful effort to actively involve and specifically target our local community's most vulnerable populations and teach them stress-reduction techniques and positive values and mores through engagement in the education, stewardship and conservation of our islands. It not only supports Hawai'i Nature Center's (HNC) mission, but also aligns with the State Division of Forestry and Wildlife's mission to responsibly manage and protect watersheds, native ecosystems, and cultural resources, and provide outdoor recreation and sustainable forest products opportunities, while facilitating partnerships, community involvement and education.

As the Administrator, I can say that after over 35 years of the Division of Forestry and Wildlife partnering with HNC in one capacity or another, most recently being through a NOAA grant titled "Exploring Kawainui: Waterbirds, Wetlands and Watersheds", HNC is a capable of executing innovative programs and formally expanding the programmatic offerings to be inclusive of everyone in our community. Living here in Hawai'i with finite resources, this concept truly embodies the idea that everyone needs to participate in *malama 'aina*, and through this participation, everyone, especially our society's most vulnerable, can benefit. I would be in full support of the proposed effort to implement a long-term, place-based, environmental education program for our community's most vulnerable, and firmly believe that the resources developed for The 'Ohana Project for our community's most at-risk populations will have a significant and measureable positive benefit to both the program participants and our island community at-large.

We look forward to the creation and expansion of this exciting program and humbly ask that this unique project be funded so that the needs of our community's most displaced populations can be addressed in a more holistic approach. Thank you for all you do on behalf of our community.




DAVID G. SMITH
Administrator



PARTNERS IN DEVELOPMENT
FOUNDATION

January 19, 2017

The Honorable Senator Jill N. Tokuda
Chair
Senate Committee on Ways and Means
Senate District 24
Hawaii State Capitol, Room 207
Honolulu, HI 96813

The Honorable Senator Donovan M. Dela Cruz
Vice Chair
Senate Committee on Ways and Means
Senate District 22
Hawaii State Capitol, Room 202
Honolulu, HI 96813

Dear Chair Tokuda and Vice Chair Dela Cruz,

Re: Hawai'i Nature Center- The 'Ohana Project:
Connecting vulnerable and at-risk youth and families to nature

I write this letter in strong support of Hawai'i Nature Center's (HNC) Grant in Aid request in the 2017 legislative session. This past fall of 2016, they ran a successful 4-day pilot of The 'Ohana Project: Connecting vulnerable and at-risk youth and families to nature" that has most definitely established the need and demand for such a comprehensive program. The 'Ohana Project is a meaningful effort to actively involve and specifically target our local Maui and O'ahu community's most vulnerable populations and teach them things such as stress-reduction techniques and positive values and mores naturally, through engagement in the education, stewardship and conservation of our islands. It not only supports Hawai'i Nature Center's mission, but also aligns with Partners In Development Foundation's focus to inspire and equip families and communities for success and service, using timeless Hawaiian values and traditions.

As the President, I can say that the ability for children, families and our community's most vulnerable to participate in HNC's award-winning programs would be extremely beneficial. HNC is a strong candidate for executing innovative approaches to programs and formally expanding the programmatic offerings to be inclusive of truly everyone in our community is a direction that I strongly support. Living here in Hawai'i with finite resources, this concept truly embodies the idea that everyone needs to participate in mālama 'āina and through this participation, everyone, especially our society's most vulnerable, can also benefit. We have

Serving Hawai'i's Families, Living Hawaiian Values

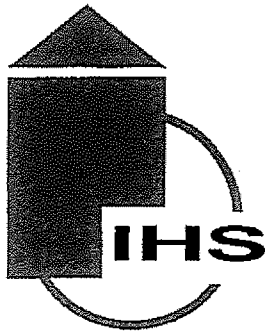
already seen these results through our substantial commitment to supporting a very successful and highly demanded Title-one school subsidy over the years, but if HNC is able to expand further into this realm and offer additional programs and services within this vein, I can only imagine the good that could come of it. I would be in full support of the proposed effort to implement a long-term, place-based, environmental education program that is specific for all of our community's most vulnerable and firmly believe that the resources developed for The 'Ohana Project for our community's most at-risk populations will have a significant and measureable positive benefit to both the program participants and our island community at-large long term.

We look forward to the formal creation and expansion of this exciting program and humbly ask that this unique project be funded in full so that the needs of our community's most displaced populations, many of which we serve at Partners In Development Foundation, can be addressed in a more holistic approach.

Sincerely,

A large black rectangular redaction box covering the signature of the sender.

President



THE INSTITUTE FOR HUMAN SERVICES, INC.

Ending The Cycle Of Homelessness

January 20, 2017

Women & Family Shelter
Business Office
546 Ka'aahi Street
Honolulu, HI 96817
Phone 808.447.2800
Fax 808.845.7190

Men's Shelter
350 Sumner Street
Honolulu, HI 96817
Phone 808.447.2900
Fax 808.537.2697

Housing & Employment
916 Ka'amahu Place A
Honolulu, HI 96817
Phone 808.447.2887
Fax 808.841.7976

www.IHShawaii.org

Board of Directors:

Sharon M. Crofts
President

Curia Salki
Treasurer

Tracy Tonaki
Secretary

Sean G. Tadak
Chair - Internal Affairs

Nani Medelmo
Chair - External Affairs
Chair - Development

Kelli Abo Trifonovitch
Chair - Governance

Ellen Carson
Duke Du Teil

Ian Fitz-Patrick

Kenneth C. Hansen

Jayson Harper

Jeff Hartle, Esq.

Stacey C.G. Hee, Esq.

Ian Hogan

Ed Hope

Kenneth W.K. Kan

Greg Kim, Esq.

Denise Konan

Craig McGinnis

Carri Morgan

David S. Morimoto

Bruce M. Nakaoka

Ku'uuhaku Park

K. James Steiner, Jr., Esq.

Barbara Tom

Lynne Unemori

Joseph Viola

Tammi Yokogawa-King

Emeriti

Roberto "Bert" Du Teil

The Rev. Msgr. Terrence Watanabe

The Honorable Senator Jill N. Tokuda
Chair
Senate Committee on Ways and Means
Senate District 24
Hawaii State Capitol, Room 207
Honolulu, HI 96813

The Honorable Senator Donovan M. Dela Cruz
Vice Chair
Senate Committee on Ways and Means
Senate District 22
Hawaii State Capitol, Room 202
Honolulu, HI 96813

Dear Chair Tokuda and Vice Chair Dela Cruz,

Re: Hawai'i Nature Center- The 'Ohana Project: Connecting vulnerable and at-risk youth and families to nature

I write this letter in strong support of Hawai'i Nature Center's (HNC) Grant in Aid request in the 2017 legislative session. In the Fall 2016, they ran a successful 4-day pilot of The 'Ohana Project: Connecting vulnerable and at-risk youth and families to nature" that has most definitely established the power of such a comprehensive program. The 'Ohana Project is a meaningful effort to actively involve and specifically target some of O'ahu's most socially vulnerable populations and teach them things such as stress-reduction techniques and positive values through experiences in nature, and through education, stewardship that focus on conservation of our islands. It not only supports Hawai'i Nature Center's mission, but also aligns with IHS's mission to create and offer tailored housing solutions for those in crisis, and nurture homeless people toward greater self-direction and responsibility.

For children and families, especially those most vulnerable in our community, to participate in HNC's award-winning programs would be a wonderful blessing. HNC has demonstrated the ability to execute innovative programs. The intentional expansion of their program offerings to truly be inclusive of everyone in our community is a direction that I strongly support. Homeless individuals and children especially, need to learn the benefits of participating in mālama 'āina which include economical ways to experience joy in the beauty of our environment and benefiting from the calming environment of nature. HNC has shown these results through their commitment to supporting a very successful and highly demanded Title-one school subsidy over the years. But, if HNC is able to expand further into this realm and offer additional programs and services within this vein, so much more good will come of it. We have already begun to discuss including HNC in the IHS Summer Fun program for homeless shelter keiki. I would be in full support of the proposed effort to implement a long-term, place-based, environmental education program that is specific for all of our community's most vulnerable and firmly believe that the resources developed for The 'Ohana Project for our community's most at-risk populations will have a significant and measureable positive benefit to both the program participants and our island community at-large long term.

We look forward to the formal creation and expansion of this exciting program and earnestly ask that this unique project be funded in full so that our community's most displaced populations might be enriched by the aina in which they live.

Sincerely,

[Redacted Signature]

Connie Mitchell
Executive Director



STATE OF HAWAII
DEPARTMENT OF EDUCATION
WAIKIKI SCHOOL
"THE MINDFUL SCHOOL"
3710 LEAHI AVENUE
HONOLULU, HI 96815

January 19, 2017

The Honorable Senator Jill N. Tokuda
Chair
Senate Committee on Ways and Means
Senate District 24
Hawaii State Capitol, Room 207
Honolulu, HI 96813

The Honorable Senator Donovan M. Dela Cruz
Vice Chair
Senate Committee on Ways and Means
Senate District 22
Hawaii State Capitol, Room 202
Honolulu, HI 96813

Dear Chair Tokuda and Vice Chair Dela Cruz,

**Re: Hawai'i Nature Center- The 'Ohana Project:
Connecting vulnerable and at-risk youth and families to nature**


This letter is in strong support of Hawai'i Nature Center's Grant in Aid request in the 2017 legislative session. During this past school year, Waikiki School participated in a half-day environmental education program and have done so for many years in the past as well. As a public Title One school—a school where a significant portion of the attending students receive free or reduced lunch, we are always grateful for the financial assistance that allows our students to get outside the classroom and engage directly with nature, but even with the existing support, it is always very difficult to make the field trip happen. With this Grant in Aid request, HNC would be providing additional support to fund our school's children attending these award winning programs and the ability to expand the existing programs even further.

The curriculum of this visit allowed our students to learn about environmental education in a hands-on and interactive approach that meets Next Generation Science Standards for national achievement. In addition, our students learned about environmental stewardship and ecological conservation of our islands. These lessons help teach to specific grade-level science education standards, as well as encouraging a sense of place and a greater responsibility for the 'āina. Taken together, the value of these opportunities would not be possible without the generous funding assistance that Hawai'i Nature Center secures for us, their well-trained staff, and their thoroughly-prepared curriculum.

Our students have continued to benefit greatly from this experience over many years and as an educator who has attended course programs at HNC for 25 years, I can say that we would be glad to support and encourage in the proposed effort to implement a long-term, place-based, environmental education program for vulnerable populations and at-risk youth. The resources developed for The 'Ohana Project for our community's most vulnerable populations will have significantly positive benefits to those underserved populations, just as our students have benefitted from their school programs.

We look forward to this exciting learning opportunity and humbly ask that this unique project be funded in full so that the needs of our community's most displaced populations can be addressed in a more holistic approach. Our keiki would directly benefit from such funding.

Sincerely,


Catherine Caine
Waikiki School
2015 Hawaii State Teacher of the Year

January 19, 2017

The Honorable Senator Jill N. Tokuda
Chair
Senate Committee on Ways and Means
Senate District 24
Hawaii State Capitol, Room 207
Honolulu, HI 96813

The Honorable Senator Donovan M. Dela Cruz
Vice Chair
Senate Committee on Ways and Means
Senate District 22
Hawaii State Capitol, Room 202
Honolulu, HI 96813

Dear Chair Tokuda and Vice Chair Dela Cruz,

**Re: Hawai'i Nature Center- The 'Ohana Project:
Connecting vulnerable and at-risk youth and families to nature**

This letter is in strong support of Hawai'i Nature Center's Grant in Aid request in the 2017 legislative session. During this past school year, Pauoa School participated in a half-day environmental education program and have done so for many years in the past as well. As a public Title One school—a school where a significant portion of the attending students receive free or reduced lunch, we are always grateful for the financial assistance that allows our students to get outside the classroom and engage directly with nature, but even with the existing support, it is always very difficult to make the field trip happen. With this Grant in Aid request, HNC would be providing additional support to fund our school's children attending these award winning programs and the ability to expand the existing programs even further.

The curriculum of this visit allowed our students to learn about environmental education in a hands-on and interactive approach that meets Next Generation Science Standards for national achievement. In addition, our students learned about environmental stewardship and ecological conservation of our islands. These lessons help teach to specific grade-level science education standards, as well as encouraging a sense of place and a greater responsibility for the 'āina. Taken together, the value of these opportunities would not be possible without the generous funding assistance that Hawai'i Nature Center secures for us, their well-trained staff, and their thoroughly-prepared curriculum.

Our students have continued to benefit greatly from this experience over many years and as an educator who has attended course programs at HNC for 3 years, I can say that we would be glad to support and encourage in the proposed effort to implement a long-term, place-based, environmental education program for vulnerable populations and at-risk youth. The resources developed for The 'Ohana Project for our community's most vulnerable populations will have significantly positive benefits to those underserved populations, just as our students have benefitted from their school programs.

We look forward to this exciting learning opportunity and humbly ask that this unique project be funded in full so that the needs of our community's most displaced populations can be addressed in a more holistic approach. Our keiki would directly benefit from such funding.

Sincerely,

A solid black rectangular box used to redact the signature of David Adachi.

David Adachi

January 19, 2017.

The Honorable Senator Jill N. Tokuda
Chair
Senate Committee on Ways and Means
Senate District 24
Hawaii State Capitol, Room 207
Honolulu, HI 96813

The Honorable Senator Donovan M. Dela Cruz
Vice Chair
Senate Committee on Ways and Means
Senate District 22
Hawaii State Capitol, Room 202
Honolulu, HI 96813

Dear Chair Tokuda and Vice Chair Dela Cruz,

**Re: Hawai'i Nature Center- The 'Ohana Project:
Connecting vulnerable and at-risk youth and families to nature**

This letter is in strong support of Hawai'i Nature Center's Grant in Aid request in the 2017 legislative session. During this past school year, Pauoa School participated in a half-day environmental education program and have done so for many years in the past as well. As a public Title One school—a school where a significant portion of the attending students receive free or reduced lunch, we are always grateful for the financial assistance that allows our students to get outside the classroom and engage directly with nature, but even with the existing support, it is always very difficult to make the field trip happen. With this Grant in Aid request, HNC would be providing additional support to fund our school's children attending these award winning programs and the ability to expand the existing programs even further.

The curriculum of this visit allowed our students to learn about environmental education in a hands-on and interactive approach that meets Next Generation Science Standards for national achievement. In addition, our students learned about environmental stewardship and ecological conservation of our islands. These lessons help teach to specific grade-level science education standards, as well as encouraging a sense of place and a greater responsibility for the 'āina. Taken together, the value of these opportunities would not be possible without the generous funding assistance that Hawai'i Nature Center secures for us, their well-trained staff, and their thoroughly-prepared curriculum.

Our students have continued to benefit greatly from this experience over many years and as an educator who has attended course programs at HNC for 3 years, I can say that we would be glad to support and encourage in the proposed effort to implement a long-term, place-based, environmental education program for vulnerable populations and at-risk youth. The resources developed for The 'Ohana Project for our community's most vulnerable populations will have significantly positive benefits to those underserved populations, just as our students have benefitted from their school programs.

We look forward to this exciting learning opportunity and humbly ask that this unique project be funded in full so that the needs of our community's most displaced populations can be addressed in a more holistic approach. Our keiki would directly benefit from such funding.

Sincerely,

A solid black rectangular box redacting the signature of the sender.

Ashley Rickard

January 19, 2017

The Honorable Senator Jill N. Tokuda
Chair
Senate Committee on Ways and Means
Senate District 24
Hawaii State Capitol, Room 207
Honolulu, HI 96813

The Honorable Senator Donovan M. Dela Cruz
Vice Chair
Senate Committee on Ways and Means
Senate District 22
Hawaii State Capitol, Room 202
Honolulu, HI 96813

Dear Chair Tokuda and Vice Chair Dela Cruz,

**Re: Hawai'i Nature Center- The 'Ohana Project:
Connecting vulnerable and at-risk youth and families to nature**

This letter is in strong support of Hawai'i Nature Center's Grant in Aid request in the 2017 legislative session. During this past school year, Pauoa School participated in a half-day environmental education program and have done so for many years in the past as well. As a public Title One school—a school where a significant portion of the attending students receive free or reduced lunch, we are always grateful for the financial assistance that allows our students to get outside the classroom and engage directly with nature, but even with the existing support, it is always very difficult to make the field trip happen. With this Grant in Aid request, HNC would be providing additional support to fund our school's children attending these award winning programs and the ability to expand the existing programs even further.

The curriculum of this visit allowed our students to learn about environmental education in a hands-on and interactive approach that meets Next Generation Science Standards for national achievement. In addition, our students learned about environmental stewardship and ecological conservation of our islands. These lessons help teach to specific grade-level science education standards, as well as encouraging a sense of place and a greater responsibility for the 'āina. Taken together, the value of these opportunities would not be possible without the generous funding assistance that Hawai'i Nature Center secures for us, their well-trained staff, and their thoroughly-prepared curriculum.

Our students have continued to benefit greatly from this experience over many years and as an educator who has attended course programs at HNC for 3 years, I can say that we would be glad to support and encourage in the proposed effort to implement a long-term, place-based, environmental education program for vulnerable populations and at-risk youth. The resources developed for The 'Ohana Project for our community's most vulnerable populations will have significantly positive benefits to those underserved populations, just as our students have benefitted from their school programs.

We look forward to this exciting learning opportunity and humbly ask that this unique project be funded in full so that the needs of our community's most displaced populations can be addressed in a more holistic approach. Our keiki would directly benefit from such funding.

Sincerely,

A solid black rectangular box used to redact the signature of the sender.

An Pham

January 19, 2017

The Honorable Senator Jill N. Tokuda
Chair
Senate Committee on Ways and Means
Senate District 24
Hawaii State Capitol, Room 207
Honolulu, HI 96813

The Honorable Senator Donovan M. Dela Cruz
Vice Chair
Senate Committee on Ways and Means
Senate District 22
Hawaii State Capitol, Room 202
Honolulu, HI 96813

Dear Chair Tokuda and Vice Chair Dela Cruz,

**Re: Hawai'i Nature Center- The 'Ohana Project:
Connecting vulnerable and at-risk youth and families to nature**

This letter is in strong support of Hawai'i Nature Center's Grant in Aid request in the 2017 legislative session. During this past school year, Pauoa School participated in a half-day environmental education program and have done so for many years in the past as well. As a public Title One school—a school where a significant portion of the attending students receive free or reduced lunch, we are always grateful for the financial assistance that allows our students to get outside the classroom and engage directly with nature, but even with the existing support, it is always very difficult to make the field trip happen. With this Grant in Aid request, HNC would be providing additional support to fund our school's children attending these award winning programs and the ability to expand the existing programs even further.

The curriculum of this visit allowed our students to learn about environmental education in a hands-on and interactive approach that meets Next Generation Science Standards for national achievement. In addition, our students learned about environmental stewardship and ecological conservation of our islands. These lessons help teach to specific grade-level science education standards, as well as encouraging a sense of place and a greater responsibility for the 'āina. Taken together, the value of these opportunities would not be possible without the generous funding assistance that Hawai'i Nature Center secures for us, their well-trained staff, and their thoroughly-prepared curriculum.

Our students have continued to benefit greatly from this experience over many years and as an educator who has attended course programs at HNC for 3 years, I can say that we would be glad to support and encourage in the proposed effort to implement a long-term, place-based, environmental education program for vulnerable populations and at-risk youth. The resources developed for The 'Ohana Project for our community's most vulnerable populations will have significantly positive benefits to those underserved populations, just as our students have benefitted from their school programs.

We look forward to this exciting learning opportunity and humbly ask that this unique project be funded in full so that the needs of our community's most displaced populations can be addressed in a more holistic approach. Our keiki would directly benefit from such funding.

Sincerely,


Brenda Fong

January 19, 2017

The Honorable Senator Jill N. Tokuda
Chair
Senate Committee on Ways and Means
Senate District 24
Hawaii State Capitol, Room 207
Honolulu, HI 96813

The Honorable Senator Donovan M. Dela Cruz
Vice Chair
Senate Committee on Ways and Means
Senate District 22
Hawaii State Capitol, Room 202
Honolulu, HI 96813

Dear Chair Tokuda and Vice Chair Dela Cruz,

**Re: Hawai'i Nature Center- The 'Ohana Project:
Connecting vulnerable and at-risk youth and families to nature**

This letter is in strong support of Hawai'i Nature Center's Grant in Aid request in the 2017 legislative session. During this past school year, Pauoa School participated in a half-day environmental education program and have done so for many years in the past as well. As a public Title One school—a school where a significant portion of the attending students receive free or reduced lunch, we are always grateful for the financial assistance that allows our students to get outside the classroom and engage directly with nature, but even with the existing support, it is always very difficult to make the field trip happen. With this Grant in Aid request, HNC would be providing additional support to fund our school's children attending these award winning programs and the ability to expand the existing programs even further.

The curriculum of this visit allowed our students to learn about environmental education in a hands-on and interactive approach that meets Next Generation Science Standards for national achievement. In addition, our students learned about environmental stewardship and ecological conservation of our islands. These lessons help teach to specific grade-level science education standards, as well as encouraging a sense of place and a greater responsibility for the 'āina. Taken together, the value of these opportunities would not be possible without the generous funding assistance that Hawai'i Nature Center secures for us, their well-trained staff, and their thoroughly-prepared curriculum.

Our students have continued to benefit greatly from this experience over many years and as an educator who has attended course programs at HNC for 2 years, I can say that we would be glad to support and encourage in the proposed effort to implement a long-term, place-based, environmental education program for vulnerable populations and at-risk youth. The resources developed for The 'Ohana Project for our community's most vulnerable populations will have significantly positive benefits to those underserved populations, just as our students have benefitted from their school programs.

We look forward to this exciting learning opportunity and humbly ask that this unique project be funded in full so that the needs of our community's most displaced populations can be addressed in a more holistic approach. Our keiki would directly benefit from such funding.

Sincerely,

A solid black rectangular box used to redact the signature of Ceri Aoyama.

Ceri Aoyama



Ka Hale A Ke Ola Homeless Resource Centers, Inc.

Monique R. Yamashita
Chief
Executive Officer

January 19, 2017

Board of Directors

Steve Miller
President

Michael Victorino
Vice President

Dr. John Decker
Secretary

Alec McBarnet
Treasurer

Cathy Bio
Father Gary Colton
Rory Frampton
Kit Hart
Nicole Spalding
Alvin Tagomori
Mynam Tuttle
Jim Worley
Doug Wright
Erin Lowenthal
Sarah Ruppenthal

Central
670 Waiale Road
Wailuku, HI 96793
(808) 242-7600

Westside
15 Ipu Aumakua Lane
Lahaina, HI 96761
(808) 662-0076

www.khako.org



The Honorable Senator Jill N. Tokuda
Chair
Senate Committee on Ways and Means
Senate District 24
Hawaii State Capitol, Room 207
Honolulu, HI 96813

The Honorable Senator Donovan M. Dela Cruz
Vice Chair
Senate Committee on Ways and Means
Senate District 22
Hawaii State Capitol, Room 202
Honolulu, HI 96813

Dear Chair Tokuda and Vice Chair Dela Cruz,

**Re: Hawai'i Nature Center- The 'Ohana Project:
Connecting vulnerable and at-risk youth and families to nature**

I write this letter in strong support of Hawai'i Nature Center's (HNC) Grant in Aid request in the 2017 legislative session. This past fall of 2016, they ran a successful 4-day pilot of The 'Ohana Project: Connecting vulnerable and at-risk youth and families to nature that has most definitely established the need and demand for such a comprehensive program. The 'Ohana Project is a meaningful effort to actively involve and specifically target our local Maui and O'ahu community's most vulnerable populations and teach them things such as stress-reduction techniques and positive values and mores naturally, through engagement in the education, stewardship and conservation of our islands. It not only supports Hawai'i Nature Center's mission, but also aligns with Ka Hale A Ke Ola's mission to serve the needs of the homeless and hungry on Maui by providing emergency food and housing, voicing their concerns, and empowering them to take responsibility for their own lives and to call on the community to assist in these actions.

As the Housing Program Director, I can say that the ability for children, families and our community's most vulnerable to participate in HNC's award-winning programs would be extremely beneficial. HNC is a strong candidate for executing innovative approaches to programs and formally expanding the programmatic offerings to be inclusive of truly everyone in our community is a direction that I strongly support. Living here in Hawai'i with finite resources, this concept truly embodies the idea that everyone needs to participate in mālama 'āina and through this participation, everyone, especially our society's most vulnerable, can also benefit. We have already seen these results through our substantial commitment to supporting a very successful and highly demanded Title-one school subsidy over the years, but if HNC is able to expand further into this realm and offer additional programs and services within this vein, I can only imagine the good that could come of it. I would be in full support of the proposed effort to implement a long-term, place-based, environmental education program that is specific for all of our community's most vulnerable and firmly believe that the resources developed for The 'Ohana Project for our community's most at-risk populations will have a significant and measureable positive benefit to both the program participants and our island community at-large long term.

We look forward to the formal creation and expansion of this exciting program and humbly ask that this unique project be funded in full so that the needs of our community's most displaced populations, many of which we serve at Ka Hale A Ke Ola on Maui, can be addressed in a more holistic approach.

Sincerely,

Joy Rucker
Housing Program Director



Hawai'i Alliance of Nonprofit Organizations unites and strengthens the nonprofit sector as a collective force to improve the quality of life in Hawai'i.

January 20, 2017

The Honorable Senator Jill N. Tokuda
Chair
Senate Committee on Ways and Means
Senate District 24
Hawaii State Capitol, Room 207
Honolulu, HI 96813

The Honorable Senator Donovan M. Dela Cruz
Vice Chair
Senate Committee on Ways and Means
Senate District 22
Hawaii State Capitol, Room 202
Honolulu, HI 96813


Dear Chair Tokuda and Vice Chair Dela Cruz,

Re: Hawai'i Nature Center: In HANO Good Standing & Jeeyun Lee, Weinberg Fellow Graduate

I write this letter confirming Hawai'i Nature Center's (HNC) good standing as a HANO nonprofit member, as they submit a Grant in Aid request in the 2017 legislative session. This past fall of 2016, their Executive Director, Jeeyun Lee also graduated from the Weinberg Fellows Program – a formal management training program for nonprofit executive directors of organizations serving disenfranchised populations. The program was created and funded by The Harry and Jeanette Weinberg Foundation and is currently administered by HANO. Ms. Lee, who also has a Master's in Social Work in International and Community Development, has been working with the poor and needy for almost a decade in our community, and I am confident in her ability to continue working with this population.

Living here in Hawai'i with finite resources, The 'Ohana Project truly embodies the idea that everyone needs to participate in mālama 'āina and through this participation, everyone, especially our society's most vulnerable, can also benefit. HANO is a statewide alliance of nonprofit organizations. Our mission is to strengthen and unite the sector as a collective force to improve the quality of life in Hawaii. In an environment of limited resources, we commend and support our member organizations like the Hawaii Nature Center that leverage resources to reach beyond their traditional constituencies to creatively serve other needy populations.

I look forward to the formal creation and expansion of this exciting program and watching as the needs of our community's most displaced populations can be addressed in a more holistic approach.


Lisa T. Maruyama
President and CEO

APPENDIX B: RESUMES

Jeeyun Lee, MSW

3592 Akaka Place • Honolulu • Hawai'i • 96822 • missjeeyunlee@gmail.com • 808.629.9764

Education

M.S.W. International and Community Development, May 2010 GPA: 3.97/4.0
Monmouth University School of Social Work
2009 Sally Kanehe International Fellowship Recipient

B.A. Social Relations, May 2005

James Madison College of Public Affairs, Michigan State University, East Lansing
2004 James Madison College Alumni Association Chicago Field Experience Scholarship Recipient
Fall 2004 Dean's List
Spring 2005 Dean's List

Experience

Hawaii Nature Center, Honolulu Hawai'i May 2015-Present

Executive Director

- Oversees 26 staff members between Maui and O'ahu, programmatic excellence, program evaluation and consistent quality of finance and administration, fundraising, communications and systems.
- Creates and recommends timelines and resources needed to achieve the strategic goals of the agency.
- Develops, maintains and supports a strong Board of Directors.
- Lead, coach, develop and retain HNC management team.
- Responsible for financial compliance of the agency and overseeing the approximately \$1 million dollar agency budget.
- Maintains a positive, professional image with respect to HNC both internally and with community partners.

Gregory House Programs, Honolulu, Hawai'i October 2012-April 2015

Clinical Operations Director

- Manages a direct service staff including 1 Transitional Housing Manager, 7 Housing Case Managers, 1 Save The Food Basket Operations Manager, 2 full-time night aides and 3 on-call night aides including recruiting, hiring, training, overseeing staff and implementing evaluations.
- Assists with budget management for all direct service and general operations grants for our \$2 million+ company budget.
- Ensures rent subsidy, transitional housing program, emergency grant and temporary shelter programs have proper protocols and procedures in place that are up to date and being followed.
- Ensures data collection integrity for all aspects of all programs implemented by Gregory House Programs.
- Directly implements emergency grant and transitional shelter programs.
- Assists in grant writing and reporting for all grants associated with Gregory House Programs.
- Maintains healthy relationships with key community leaders and groups.
- Assists in preparation for audits.
- Direct service with our highest risk clients, all intakes and discharges providing psychosocial assessments.
- Manages the wait list for all programs.
- Facilitates weekly clinical case management meetings and coordinates staff trainings.

Waikiki Health Center, Honolulu, Hawai'i October 2011- September 2012

Youth and Elder Services Manager

- Manages all youth and elder services for Waikiki Health Center including Waikiki Friendly Neighbors, GED Program, Employment Academy and Youth Outreach along with all case management staff in these areas.
- Finds and writes grants and grant reports to support youth and elder programs.
- Maintains healthy relationships with key community leaders and groups.
- Solicits donations from both individual and major donors
- Implements a new grant that provides job training for youth who are experiencing homelessness and youth who are at risk of experiencing homelessness.
- Manages a \$300,000/year budget.
- Fosters a healthy relationship with Youth Outreach's partner organization, Hale Kipa.

Waikiki Health Center, Honolulu, Hawai'i January 2010- October 2011

HIV/HCV Early Intervention Services Program Coordinator

- Coordinated psycho-educational presentations, testing and case management services in treatment facilities for youth and adults who have substance abuse issues.
- Hired and Managed 5 case managers on Oahu, Kauai, Maui and Big Island.
- Maintained a \$357,000/year grant budget.
- Produced support materials and grant reports for the program.

Kalihi Palama Health Center, Honolulu, Hawai'i June 2009-August 2009

Social Work Intern

- Created, implemented and analyzed a community needs assessment addressing the Micronesian population and their health and social service needs.

Korean American Neurosurgery Society Brick, New Jersey May 2009- March 2011

Executive Director

- Organizing fundraising efforts, conferences and website development.
- Assisting in program development.
- Managing accounting duties.
- Maintaining 501c3 status.
- Reporting to the Board of Directors.

Jersey Shore University Medical Center Neptune, New Jersey August 2008-May 2009

Medical Oncology Social Work Intern

- Assisted in discharge planning for inpatients.
- Researched, created, and administered oncology stress reduction survey.
- Networked with hospital staff and local community organizations.
- Attended Schwartz rounds and Tumor Board Meetings
- Participated in daily interdisciplinary floor rounds.

Anita H. Friede New York, New York December 2007-July 2008

Event Planner and Assistant

- Acted as wedding planner for her daughter's wedding.
- Booked appointments and interviewed vendors.
- Managed a \$70,000.00 budget.
- Assisted in clerical duties for the Mrs. Friede's business.
- Accompanied Mrs. Friede to doctor's appointments and chemotherapy treatments.

American Cancer Society New England Division, Weston, Massachusetts August 2006- July 2006

Community Executive, Cancer Resource Network

- Promoted and implemented American Cancer Society's core support programs, services, and materials within 5 hospitals in the greater Boston area.
- Networked with hospital staff and patients.
- Outreach, working with local community organizations.
- Recruit, train, and manage volunteers to assist in implementation of support programs and services.

American Cancer Society New England Division, Holyoke, Massachusetts November 2005- August 2006

Resource Center Manager

- Market resource centers internally within hospitals and externally with community outreach working with local communications and marketing staff as appropriate.
- Recruit, train, and manage volunteers to work at the resource centers.

Home Instead Senior Care, East Lansing, Michigan May 2005-July 2005

Caregiver

- Provided compassionate, intuitive care for the elderly and terminally ill patients.
- Reacted to new and unexpected situations in a highly professional, accommodating manner.

Council of Graduate Students, Michigan State University, East Lansing, Michigan January 2004-May 2005

Special Projects Coordinator/ Office Staff

- Organized and administered ten monthly council meetings, helping to put together the agenda and setting up all catering needs in a professional manner.
- Delegated work such as phone calls, inquiries, or making copies for events to one special projects support staff member.
- Planned and organized four successful events, including a successful 2004 Graduate Student Bonfire, orchestrating all administrative aspects such as approvals from the fire marshal, the city of East Lansing, Michigan State University, and grounds, arranging for the solicitation of donations and funds, and creating artistic tickets and advertisements for this not-for-profit event.
- Participated in the collaborated effort of planning a speaker series on women in higher education which will be hosting four female university and college presidents. Working within a \$5000.00 budget, in charge of the designing and planning aspect for the location of all decorations and arranging for plant rental, flower

arrangements, and music for the event. Designed a customized banner, tickets and promotions for this non-profit informational event.

- Perform office functions such as data entry, filing, faxing, and basic accounting.
- Assist students in student loan programs, legal aid, funding forms, and thesis and dissertation payments.

Boy Scouts of America, Lansing, Michigan January 2004-December 2004

Urban Coordinator

- Coordinated urban outreach programs for Boy Scouts of America within 3 Lansing elementary schools a semester, instilling within them ideas of cooperation, sharing, community, and acceptance through creating informative activities for the cub scouts to participate in and learn from.
- Designed independently and instigated taking the cub scouts on educational and exciting field trips.
- Improvised to find what methods of communication worked with each group of cub scouts.

Law Offices of Cheng, Cho, & Yee P.C., Chicago, Illinois Summer 2004

Intern

- Drafted a mandamus for a client which senior partner Cho utilized to win the client's case.
- Conducted private informational interviews with clients, performed paralegal duties such as research, and preparing immigration forms for the senior partners.
- Drafted an immigration petition based on spousal abuse which Attorney Cho used to reverse a denial into the United States.
- Acted as a Korean interpreter for a successful adoption hearing.
- Translated Korean documents to English.
- Scheduled Attorney Cho's calendar via Outlook.
- Fielded Attorney Cho's calls while she was on maternity leave.

Activities

- Protecting Hawaii's Ohana Children Underserved Elderly and Disabled (PHOCUSED) Board Treasurer 2015-Present
- Presentation: "After Diagnosis: Examining Social Services for Cancer Patients in America." The 11th Pyongyang Medical Symposium by Korean and Overseas Korean Medical Scientists: Pyongyang, North Korea. May 3-6, 2009.
- Participated in International and Community Development Committee Meetings.
- Tutored two English as a Second Language students 3 times a week. (2004)
- James Madison College Student Senator 2004-2005.
- Co-chaired the 2005 James Madison College Student Senate Charity Ball, coordinating decorations, designing the program, soliciting for funding, creating publicity, and delegating work to 15 people.
- Designed 2004 Student Senate T-Shirt.

Skills

- Fluent in the Korean language
- Exceptional proficiency in Microsoft Office programs and Internet and research skills.
- Typing skills: 72 words per minute
- Grant writing
- Presenting, public speaking, media experience
- Tobacco Treatment Specialist certified by the Mayo Clinic
- 2016 Weinberg Fellow

Excellent References Furnished Upon Request

Savannah Collins

(808) – 955 – 0100 x129

savannah@hawaiinaturecenter.org

WORK EXPERIENCE

Hawai'i Nature Center, Honolulu, HI

November 2016-Present

Grant Development Manager

- Assist with grant proposal development, management, reporting, and administration
- Prepare reports on expenditures and provide them to funding agencies, upon request
- Act as a liaison between the Executive Director and the staff, Board of Directors, and outside parties

Cubic Global Defense, Honolulu, HI

April 2015-November 2016

Program Finance Analyst

- Assist in financial management and analysis of contract task orders, subcontract finances, and revenue forecasting
- Assist in management of contract budgets, burn plans, and contract deliverables, including financial status reports
- Track employee gains/losses and communicate related updates to work assignments to manage task burn rates
- Maintain written and verbal communication with civilians, government employees, and fellow contractors regarding financial expenditures, contract requirements, and purchase requests

Texas Comptroller of Public Accounts, Austin, TX

July 2014-April 2015

Data Analyst

- Design and coordinate research projects using quantitative methods and data analysis in STATA and Excel
- Translate complex data into relevant and understandable reports for public and state government consumption
- Maintain spreadsheets and manage data on the Texas budget, financial accountability, and comparability of Texas taxation, infrastructure, education, and population compared to the other fifty states

Bush School of Government and Public Service, College Station, TX

August 2013-June 2014

Graduate Research Assistant

- Copyedited and formatted articles for publication according to individual journal specifications
- Reviewed and recoded datasets using advanced statistical software
- Performed online searches of academic databases to conduct reviews of relevant literature

Center for Applied Social Research, Norman, OK

May 2011-August 2012

Research Assistant

- Conducted online research and literature review from academic sources on stakeholder engagement
- Managed database of worldwide stakeholders, nuclear facilities, and relevant primary source documents
- Assisted in writing, editing, and formatting a research report for a national nuclear laboratory
- Researched and presented groundbreaking findings on nuclear power plant siting in India using the Narrative Policy Framework and descriptive statistics to academics at an international political science conference

EDUCATION

Texas A&M University

College Station, TX

Bush School of Government and Public Service – Master of Public Administration

Graduation Date: May 2014

Overall GPA: 3.63/4.0

Concentrations: Public Policy Analysis, Quantitative Methods in Policy Analysis

Relevant Courses: Quantitative Methods I, Quantitative Methods II: Policy Emphasis & Econometrics, Quantitative Methods II: Game Theory, Public Policy Formation, Policy Analysis, Economic Analysis, Social Welfare and Health Policy, Analyzing Risk and Hazards in Public Policy, Public Finance

Major Projects/Research:

- Worked with the Conquer Cancer Foundation to manage a database of donor information and preferences, as well as using statistical analysis from an online survey to evaluate donor satisfaction and increase likelihood of repeat giving
- Analyzed the Nuclear Waste Policy Act with special emphasis on Yucca Mountain in two policy briefs

- Conducted a cost-benefit analysis of the effectiveness of the Women's Health Program in Texas
- Completed weekly assignments practicing statistical analyses and advance analytics

Technology exposure:

- Experience with STATA, EndNote, Microsoft SharePoint

University of Oklahoma

Norman, OK

Bachelor of Arts – Political Science

Graduation Date: May 2012

Overall GPA: 3.97/4.0

Minors: International Security Studies, Russian Language

Relevant Courses: Introduction to Political Analysis, Applied Statistical Methods, Methods of Social Research, Social Statistics, Honors Research: Women in Local Politics, Foreign Policy Analysis, Global Security, Russian Foreign Policy, Comparative Russian Politics

Major Projects/Research:

- Designed and distributed an original survey for local elected officials in the state of Oklahoma and completed data analysis of survey responses using t-tests, Chi-square, Pearson's R, and Cramer's V
- Represented China in mock UN Security Council meeting
- Conducted a detailed analysis of Russia's arms security strategy

Technology exposure:

- Experience with SPSS, Qualtrics, Survey Monkey
- Proficient in Microsoft Office

PUBLICATIONS

- Collins, Savannah, Taylor Smith, Molly Walsh, and Michael Castellon. 2015. "U.K. Leads Foreign Investment in Texas." *Texas Comptroller of Public Accounts Fiscal Notes*. August.
- Gupta, Kuhika, Joe T. Ripberger, and Savannah Collins. 2014. "Jaitapur and the Politics of Siting a Nuclear Power Plant in India." *Science of Stories: Applications of the Narrative Policy Framework in Public Policy Analysis*, (ed.) Michael D. Jones, Elizabeth A. Shanahan, and Mark K. McBeth. New York, New York: Palgrave Macmillan.
- Collins, Savannah. 2012. "A Nuclear Waste Repository: The Search for Volunteer Host Communities." *The Public Servant*. November.

AWARDS AND HONORS

- Carl Albert Center Undergraduate Research Fellow (\$1,600)
- Dean's Leadership Certificate
- Honors College Award for Distinguished Undergraduate Research (\$250)
- Texas A&M University Graduate Merit Fellowship (\$32,000; \$20,000)
- Phi Beta Kappa Member and Scholarship Recipient (\$250)
- Political Science Department Scholarships (\$2,000; \$400)
- Undergraduate Research Opportunity Program Funding (\$500)

LEADERSHIP AND ACTIVITIES

- Capitol Research Day (2012)
 - Presented original research on women's political involvement to state legislators
- Girl Scouts of Hawaii Troop Leader (2016)
- Model United Nations (2008-2012)
 - President (2010-2011); Secretary-Treasurer (2009-2010, 2011-2012)
- Oklahoma Political Science Association Conference (2011)
 - Presented original research on women's political involvement to academics and the public
- Student Government Association (2012-2014)
 - Secretary (2013)
- Undergraduate Research Day (2010, 2012)
 - Presented original research on women's political involvement to university students and faculty