

# Overview of LFA in Hawaii



**Cas Vanderwoude**  
**Hawaii Ant Lab**  
**Pacific Cooperative Studies Unit**  
**University of Hawaii**

**[www.littlefireants.com](http://www.littlefireants.com)**

# Who the HAL is HAL?



## The Team:

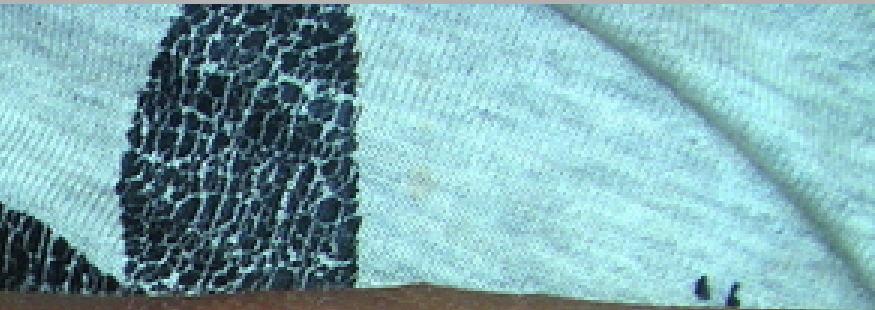
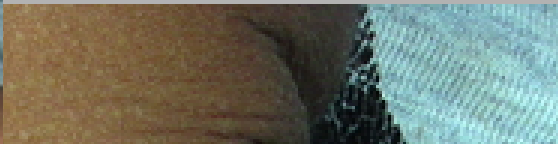
- Cas Vanderwoude
- Matt Kema
- Trent Hanzawa
- Michelle Montgomery
- Ersel Hensley
- Kiyoshi Adachi
- Heather Forester















07.05.2007





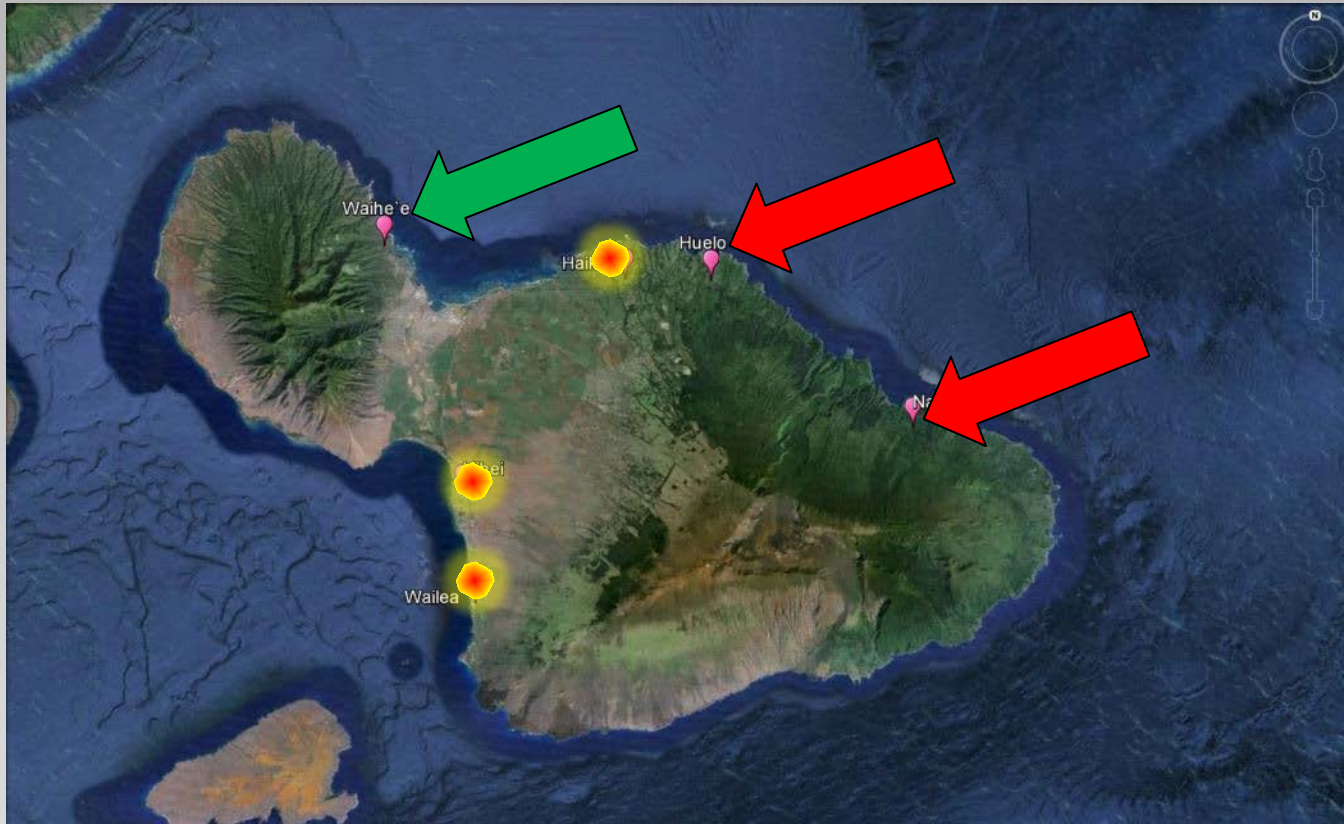


# Kauai

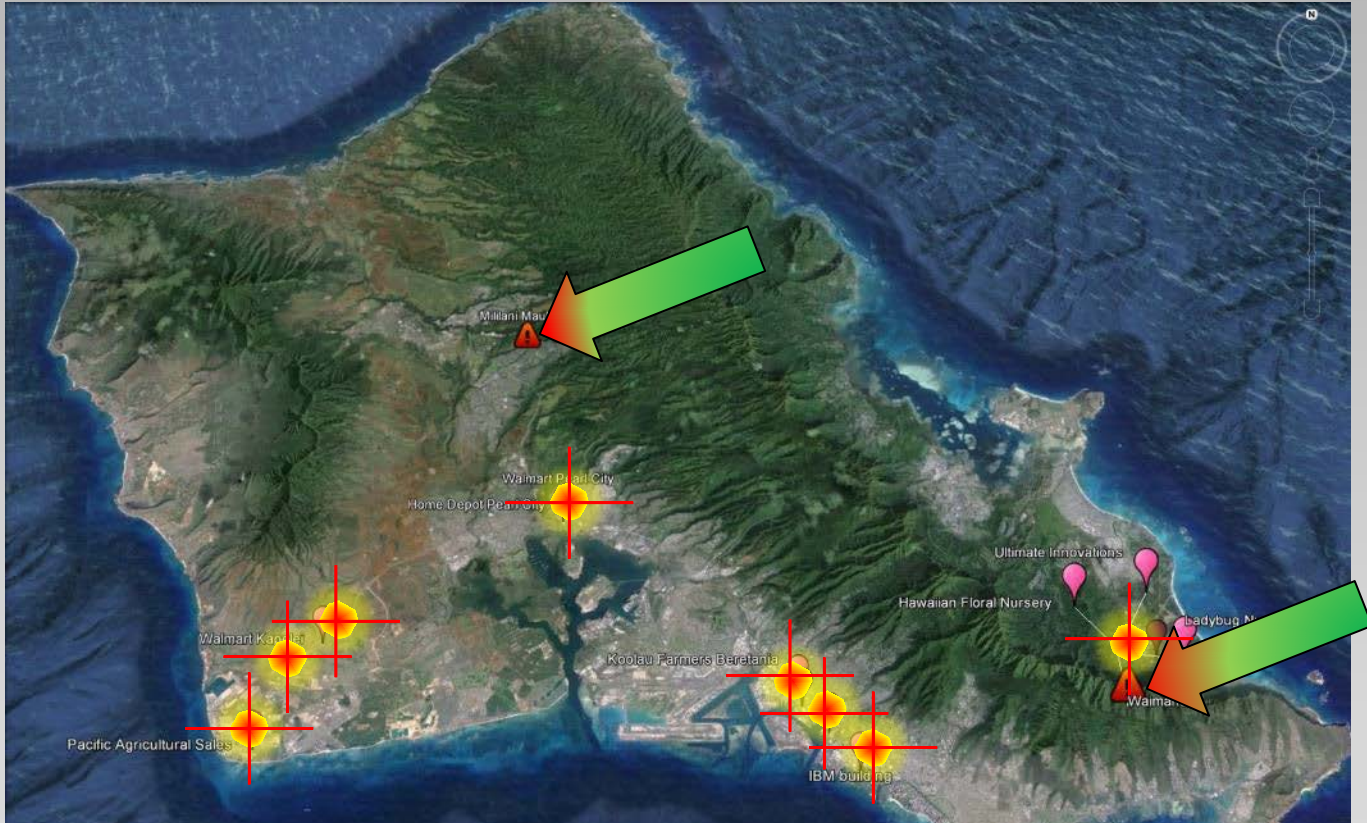




# Maui



# Oahu



[www.littlefireants.com](http://www.littlefireants.com)



# Agricultural issues

- Infested growers face multiple issues
  - Cost of treatment
  - Difficulty in harvesting and husbandry
  - Quarantine issues
    - Inter-island
    - Inter-state
  - Predicted annual cost for an infested nursery \$583\*
  - Predicted annual cost for infested ag property \$9,110\*

\* Motoki, M., D.J. Lee, C. Vanderwoude, S.T. Nakamoto and P.S. Leung. 2013. A bioeconomic model of Little Fire Ant *Wasmannia auropunctata* in Hawaii. Technical Report No. 186. Pacific Cooperative Studies Unit, University of Hawai`i, Honolulu, Hawai`i. 89pp.