

House District _____

Senate District _____

THE TWENTY-EIGHTH LEGISLATURE
APPLICATION FOR GRANTS
CHAPTER 42F, HAWAII REVISED STATUTES

Log No: _____

For Legislature's Use Only

Type of Grant Request:

GRANT REQUEST – OPERATING

GRANT REQUEST – CAPITAL

"Grant" means an award of state funds by the legislature, by an appropriation to a specified recipient, to support the activities of the recipient and permit the community to benefit from those activities.

"Recipient" means any organization or person receiving a grant.

STATE DEPARTMENT OR AGENCY RELATED TO THIS REQUEST (LEAVE BLANK IF UNKNOWN): _____

STATE PROGRAM I.D. NO. (LEAVE BLANK IF UNKNOWN): _____

1. APPLICANT INFORMATION:

Legal Name of Requesting Organization or Individual:
Read To Me International

Dbas: Read To Me International

Street Address:
126 Queen St., Ste. 303
Honolulu, HI 96813

Mailing Address: same as above

2. CONTACT PERSON FOR MATTERS INVOLVING THIS APPLICATION:

Name LYNNE WAIHEE

Title PRESIDENT

Phone # (808) 955-7600

Fax # (808) 955-7601

E-mail Lynne@ReadToMeIntl.org

3. TYPE OF BUSINESS ENTITY:

- NON PROFIT CORPORATION INCORPORATED IN HAWAII
- FOR PROFIT CORPORATION INCORPORATED IN HAWAII
- LIMITED LIABILITY COMPANY
- SOLE PROPRIETORSHIP/INDIVIDUAL
- OTHER

6. DESCRIPTIVE TITLE OF APPLICANT'S REQUEST:

PROMOTING CHILDREN'S LITERACY THROUGH ITS MISSION:
TO SHARE THE LOVE AND JOY OF READING ALOUD

4. FEDERAL TAX ID #: _____

5. STATE TAX ID #: _____

7. AMOUNT OF STATE FUNDS REQUESTED:

FISCAL YEAR 2017: \$ 235,187

8. STATUS OF SERVICE DESCRIBED IN THIS REQUEST:

- NEW SERVICE (PRESENTLY DOES NOT EXIST)
- EXISTING SERVICE (PRESENTLY IN OPERATION)

SPECIFY THE AMOUNT BY SOURCES OF FUNDS AVAILABLE
AT THE TIME OF THIS REQUEST:

STATE \$ 3,990
 FEDERAL \$ 0
 COUNTY \$ 0
 PRIVATE/OTHER \$ 62,000

TYPE NAME & TITLE OF AUTHORIZED REPRESENTATIVE:

AUTHORIZED SIGNATURE

LYNNE WAIHEE, PRESIDENT

NAME & TITLE

1/22/16

DATE SIGNED



RECEIVED
1-22-16



Application for Grants

I. Background and Summary

1. Read to Me International Foundation (RTMI) is a 501 (c) (3) nonprofit organization incorporated in March 1996 which grew out of a partnership between the Governor's Council for Literacy and the Rotary Club of Honolulu Sunrise. Its mission, "To Share the love and joy of reading aloud to children," resonates throughout our community with a goal that every child will be read to every day.

In 1983, in an effort to understand how children learn to read, a National Commission on Reading was created by Congress to do a careful, thorough synthesis of an extensive body of research on reading. The Commission searched through more than ten thousand research projects over the previous quarter of a century to determine what works, what might work, and what doesn't work. They concluded that reading aloud to children was "the single most important activity to build the knowledge required for eventual success in reading."

RTMI plays a critical role in supporting the early childhood community by providing in-service/professional development opportunities for early childhood educators and for grades K-6 in elementary schools; providing presentations to preschool parents and elementary parents; partnering with other agencies, organizations, and entities which support early childhood literacy; and hosting conferences where attendees can engage in hands-on/practical applications to develop their children's literacy skills from those in the field.

Finally, RTMI understands that children learn through visual, auditory and kinesthetic modes, and it incorporates those learning styles in developing materials and curricula to support early literacy. It is essential that those dealing with children use various means to reach their children, and RTMI shares best practices, and research-based information with early childhood and elementary school educators and parents, modeling proven strategies and techniques.

2.

Goal 1. Support children's literacy by offering workshops, trainings, and presentations with research-based, best-practice information that will support reading aloud to children and help children develop literacy skills that prepare them for success in school.

Goal 2. Plan and implement a Read To Me International Conference that promotes reading aloud, featuring national and local authors with 18 to 24 breakout sessions.

Goal 3. Expand adult read-aloud skill-development program--RTM10 (Read to Me 10 minutes a Day)--where parents of children 0-6 from under-resourced communities on the Wai'anae Coast learn and practice reading aloud to their children.

Goal 4. Provide support to inmates by providing literacy programs on the island of O'ahu and Kaua'i and continue the *Haku Mo'olelo* program in which inmates write their own stories for publication and mail it home to their children.

Goal 5. Promote reading aloud using RTMI's website, social media and other communications tools.

3. The mission and goals of RTMI serve a public purpose and meet a great need in our community. To be competitive in today's global economy Hawai'i will require a literate and educated workforce. Ample research on reading aloud to children shows that the promotion of language development and other emergent literacy skills helps children become successful readers as they prepare for school. Through books, a child will learn new words that stimulate vocabulary growth. Therefore, RTMI concurs with the Every Student Succeeds Act (ESSA) 2015 by focusing on literacy for the low performing schools and the students living in under-resourced communities.
4. & 5. In consonance with the December 2015 Every Student Succeeds Act (ESSA) legislation RTMI falls within the family literacy and family engagement priorities of this reauthorized legislation. Other areas of this act include: Emphasis on preschool readiness skills; authorized programs for American Indian, Native Hawaiians and Native Alaskans to improve the academic achievement of the disadvantaged. RTMI addresses preschool and grades K-6 literacy, and RTM10 continues to support families in under-resourced communities to improve their children's language development while enhancing their read-aloud skills. This will contribute to a more literate work force and enriched quality of life. In addition, RTMI supports programs for incarcerated women and men on O'ahu and Kaua'i.

II. Service Summary and Outcomes

1.
 - A. **Support children's literacy development:**
 - a) Conduct ten (10) presentations and workshops for parents, Parent Community Networking Centers (PCNC), teachers and others servicing children and families.
 - b) Conduct ten (10) community-events to share RTMI's mission of reading aloud to children.
 - B. **Organize and host a two (2) day national quality conference.**

C. Provide Prison Literacy Programs:

- a) Provide prison literacy programs at three (3) correctional facility sites (WCCC, Waiawa, Kaua'i).
- b) Continue the Haku Mo'olelo project at WCCC for female inmates to create their own children's stories to be published and recorded for their children ages 2-10 years old.

D. Implement adult read aloud, skill development programs:

- a) Conduct three (3) cycles of Read-Aloud trainings at both the Early Learning Center in Mā'ili and Hale Wai Vista Affordable Housing Complex on the Wai'anae Coast
- b) Continue to collect data and evaluate program effectiveness.

E. Build awareness of the importance of reading aloud to children:

- a) Continue to build webpage as a "go to" site for parents to find resources and age appropriate books.
- b) Augment the existing website to include social media postings to promote interactive sharing of recommended titles and activities to increase community reach.

2.-4. (ATTACHMENT 1: 2016-2017 GIA Scope of Service)

III. Financial

Budget

1. - 4. ATTACHMENT: BUDGET REQUEST BY SOURCE OF FUNDS

Quarter 1	Quarter 2	Quarter 3	Quarter 4	Total Grant
\$58,796	\$58,797	\$58,797	\$58,797	\$235,187

5. Not applicable.

6. Balance of unrestricted current assets as of December 31, 2015- \$79,401

IV. Experience and Capability

A. Necessary Skills and Experience

Read To Me International (RTMI) has been in existence for more than 19 years. As listed in the personnel and staffing qualification section, all program leaders for presentations, prison projects and RTM10 hold degrees and advanced degrees in education. The president and founder of RTMI (Lynne Waihee) presents and holds read-aloud trainings on O'ahu and the Big Island. The program director (Pat Mizuno) has overseen the prison project providing literacy training on Oahu at two sites and in Arizona. RTM10 is a relatively new program that is headed by the development director (Aileen Shin); this program serves parents on the Wai'anae Coast. The executive director (Dr. Judith Saranchock) created a pilot program (Haku Mo'olelo) (2015-16) for inmates at WCCC to create and publish children's books. Finally, all staff working with these programs listed in this grant have extensive educational and leadership experience. (See section V. A. Proposed Staffing, Staff Qualifications, Supervision and Training.)

B. Facilities

RTMI operates out of two small offices for two full time, one part-time staff member and a full time volunteer. The other part-time staff member works as a part-time preschool teacher and comes to the office for meetings and projects only. In January 2015, RTMI opened a satellite office in Mā'ili at the Early Learning Center in Mā'ili that houses nonprofit organizations serving the Wai'anae community. A site assistant oversees this office for 15 hours a week. The agency is fortunate to have favorable rents. Staff members work in compact spaces so that funds can be spent on programs that support preschool to K-6 students, parents and the community.

V. Personnel: Project Organization and Staffing

A. ATTACHMENT:

Proposed Staffing, Staff Qualifications, Supervision and Training

B. ATTACHMENT:

Organization Chart

C. ATTACHMENT:

BUDGET JUSTIFICATION – PERSONNEL SALARIES AND WAGES

VI. Other

A. Litigation
Not Applicable

B. Licensure or Accreditation
Not Applicable

C. Private Educational Institutions
Not Applicable

D. Future Sustainability Plan
Read To Me International operates with a small staff—two full time, two part-time, and an assistant at our satellite office in Mā‘ili. With this minimal workforce, RTMI was able to maximize the 2014-2015 GIA grant. Last fiscal year, RTMI had more than 11,000 contacts. In addition, the grant allowed the agency to support the incarcerated at WCCC, Waiawa and at Eloy, Arizona. Without GIA funding, RTMI will have to reduce staff and services. This will result in fewer presentations in public schools and institutions such as prisons. The impact will be significant as RTMI programs in these venues emphasize the importance of family engagement in the read aloud and literacy process. To continue the RTMI mission without GIA funding will result in the agency seeking private funds from community foundations. Consequently, the agency programs must align with foundation missions. In many cases, this will dramatically reduce any services provided in public schools and institutions. The latest Every Student Succeeds Act (ESSA) signed by President Obama emphasizes family literacy and family engagement as well as improving the academic achievement for the disadvantaged. RTMI programs would be negatively impacted in these areas. Therefore, it is hoped that we may continue our GIA funding for 2017-2018.

E. ATTACHMENT:
Certificate of Good Standing

ATTACHMENT 1

Goal 1: Support children's literacy by offering workshops, trainings, and presentations with research based, best-practice information that will support reading aloud to children and help children develop literacy skills that prepare them for school.

Tasks and Responsibilities	Outcomes	Measurements	By When
<ul style="list-style-type: none"> • Provide ten (10) presentations and workshops for O'ahu for parents, PCNCs, teachers and others serving children and families. 	<ul style="list-style-type: none"> • 75% of participants will rate the presentations/workshops 4.0 out of a 5 point scale on the workshop effectiveness. • 75% of participants will learn something new about the importance of reading aloud. • Participants will commit to reading aloud to their children for 10 minutes a day on a regular basis. 	<ul style="list-style-type: none"> • Participants will fill out an evaluation sheet, which will be collected at the end of the presentation or workshop. Evaluations will be tallied and reviewed. 	Jun-17
<ul style="list-style-type: none"> • On Hawaii Island, provide a minimum of ten (10) read-aloud presentations, including workshops, trainings, and classroom offerings. 	<ul style="list-style-type: none"> • 80% of participants in workshops and presentations on Hawaii Island will rate the workshops and presentations' effectiveness a 4.0 on a 5-point scale. 	<ul style="list-style-type: none"> • Evaluation sheets will be disseminated at the end of the read aloud workshops and presentations to measure a number of desired outcomes. Such measures will be tallied and analyzed to make improvements where necessary. • Logs will be kept on the number of contacts made by RTMI's participation in community events. 	Jun-17

Goal 2: Plan and implement a Read To Me International Conference that promotes reading aloud and features national and local authors with numerous breakout sessions.

Tasks and Responsibilities	Outcomes	Measurements	By When
<ul style="list-style-type: none"> Organize and host a two-day Reading Conference to promote literacy skills by featuring national and local authors who share ideas for writing successfully, and using reading aloud as a strategy. 	<ul style="list-style-type: none"> Between a 180 to 200 educators and other interested parties will participate in the conference and rate it as a meaningful and useful literacy conference. 	<ul style="list-style-type: none"> 75% of participants will rate the conference as a whole 4.0 on a 5.0 scale on the conference evaluation. 	Jun-17
<ul style="list-style-type: none"> Plan and implement a Read To Me International Conference that promotes reading aloud and features national and local authors with 18-24 breakout sessions. 	<ul style="list-style-type: none"> Participants will leave the conference with strategies they can apply in their classrooms and other sites. 	<ul style="list-style-type: none"> 75% of participants will rate this conference component a 4.0 on a 5.0 scale. This feedback will be tallied and analyzed for future improvements. 	Jun-17

Goal 3: Expand adult read-aloud, skill-development program--RTM10 (Read to Me 10 minutes a Day)--for parents of children 0-6 from under- resourced communities.

Tasks and Responsibilities	Outcomes	Measurements	By When
<ul style="list-style-type: none"> Expand participation in RTM10 cycles at the Early Learning Center in Mā'ili. Firmly establish RTM10 Program at Hale Wai Vista affordable housing complex. Develop an RTM10 Reader's Alumni Group. 	<ul style="list-style-type: none"> Increase the average number of participants by 16% at the Early Learning Center in Maili and the Hale Wai Vista. 	<ul style="list-style-type: none"> Participant registrations and attendance monitoring. 	Jun-17
<ul style="list-style-type: none"> Develop an RTM10 Reader's Group. 	<ul style="list-style-type: none"> RTM10 alumni are engaged in continuing the skills and strategies gained from the RTM10 Core Curriculum. 	<ul style="list-style-type: none"> * Attendance at alumni gatherings; feedback from Alumni Newsletter; participation in the planning of alumni events. 	Jun-17

Goal 4: Provide support to inmates by providing literacy programs on the island of O'ahu and Kaua'i. and continue the Haku Mo'olelo read aloud program in which inmates write their own stories for publication and reading aloud.

Tasks and Responsibilities	Outcomes	Measurements	By When
<ul style="list-style-type: none"> Enhance the current literacy program at the Women's Community Correctional Center (WCCC) and at Waiawa Correctional Facility (WCF). 	<ul style="list-style-type: none"> WCCC and WCF inmates will gain an understanding of what makes a good story through read-aloud techniques of children's books. 	<ul style="list-style-type: none"> 50% of WCCC inmates enrolled in the program will mail at least two books a year home. 25% of the participants at Waiawa will mail home a minimum of two books a year. 	Jun-17
<ul style="list-style-type: none"> Continue the Haku Moolelo Program at WCCC for inmates to create their own children's stories for publication. 	<ul style="list-style-type: none"> Publish 10 women inmates original stories per cycle (Fall/spring) to read aloud to their children, and mail the book and recorded CD home. A celebration with inmates and families will take place after each cycle. 	<ul style="list-style-type: none"> Evaluation sheets will be disseminated at the end of each session. Such measures will be tallied to make improvements where needed. There will be 18 to 22 books published. 80% of the participants will complete the class. 	Jun-17
<ul style="list-style-type: none"> Provide Kauai Correctional Center (KCC) with a literacy program. 	<ul style="list-style-type: none"> Kauai inmates will learn how to read aloud to their children and record stories for their children for a total of 10-15 books to be recorded on CD's and mailed home. 	<ul style="list-style-type: none"> A record of the dates and titles of books sent home to the children of inmates will be maintained. 75% of the participating inmates will mail at least two books and CDs home. 	Jun-17

Goal 5: Provide web-based and other media to promote reading aloud using RTMI's website, social media and other communications media.

Tasks and Responsibilities	Outcomes	Measurements	By When
<ul style="list-style-type: none"> Construct and post new resources and targeted content related to reading aloud to RTMI's website and other social media tools. 	<ul style="list-style-type: none"> Promote interactive sharing of recommended titles, activities, using social media to increase community reach. 	<ul style="list-style-type: none"> Update the website throughout the year with newsletters that address research articles, children's books and serve as a "go to" site for parents and community. 	Jun-17

BUDGET REQUEST BY SOURCE OF FUNDS

Period: July 1, 2016 to June 30, 2017

Applicant: Read To Me International Foundation

BUDGET CATEGORIES	Total State Funds Requested (a)	Trust & Foundations (b)	Other Funds (c)	Total
A. PERSONNEL COST				
1. Salaries	153,099		8,705	161,804
2. Payroll Taxes & Assessments	3,000			3,000
3. Fringe Benefits	5,568			5,568
TOTAL PERSONNEL COST	161,667		8,705	170,372
B. OTHER CURRENT EXPENSES				
1. Office Rent, Parking	19,145		10,380	29,525
2. Telecommunication	4,720			4,720
3. Copier	2,465			2,465
4. Other Admin. Costs	7,500		10,500	18,000
5. Contracts	10,300		15,000	25,300
6. Programs	24,730	35,600	38,780	99,110
7. Professional Development/Training	4,660		4,185	8,845
8. Strategic Planning			1,240	1,240
9				0
10				0
11				0
12				0
13				0
14				0
15				0
16				0
17				0
18				0
19				0
20				0
TOTAL OTHER CURRENT EXPENSES	73,520	35,600	80,085	189,205
C. EQUIPMENT PURCHASES	0	0	0	
D. MOTOR VEHICLE PURCHASES	0	0	0	
E. CAPITAL	0	0	0	
TOTAL (A+B+C+D+E)	235,187	35,600	88,790	359,577
SOURCES OF FUNDING		Budget Prepared By:		
(a) Total State Funds Requested	235,187	Lynne Waihee, President (808) 955-7600		
(b) Trusts & Foundations	35,600	Name (Please type or print) Phone		
(c) Other Funds	88,790	Signature of Authorized Official Date		
TOTAL BUDGET	359,577	Judith Saranchock, Executive Director		
		Name and Title (Please type or print)		

V. Personnel: Project Organization and Staffing

A. Proposed Staffing, Staff Qualifications, Supervision and Training



Lynne Waihe'e, President

As a youngster, Lynne Waihee found magic in her otherwise mundane life through the world of princesses and princes, fairy tales and fables. In real life, Read To Me International President Lynne Waihee has led a charmed life as a former First Lady of Hawai'i, during which time she served as the Honorary Chair for the Governor's Council for Literacy. A former high school English teacher, literacy was a perfect fit for her role as First Lady, and Waihee has now championed childhood literacy's cause for over 23 years. She recalls with fondness reading in bed to her own children, John IV and Jennifer, and anxiously awaits the day she has grandchildren to whom she can read. Meanwhile, she finds great joy in reading aloud to anyone's children, and to adults as well . . . including husband John.



Dr. Judith Saranchock, Executive Director

Dr. Judith Saranchock has an extensive professional and educational background through her work as a teacher, principal and Complex Area Superintendent. She has worked with a number of students, teachers, and classified staff as well as with various organizations, including the Department of Health, the University of Hawaii and City, State and Federal offices. Saranchock believes through a school/business partnership and team approach, Read To Me International can increase the number of volunteers and staff to foster its mission and create a learning environment that will attract more children.



Aileen Shin, Director of Development

Aileen Shin has partnered with several local non-profit organizations to advance their missions and goals. By creating a symbiotic relationship between the Board of Directors, supporters, businesses and the broader community, Aileen has successfully integrated resources to further the missions of these non-profits. Along with creating, coordinating and implementing fundraising efforts, Aileen has worked with leadership teams to meet and monitor financial goals, assist various accreditation processes, and provide guidance for strategic planning.



Patrice Mizuno, Program Director

Big Island-born Pat Mizuno serves as Program Director. She received a B.S. in Speech Pathology and Audiology from the University of Hawaii, and then an M.A. in Education. She is also a Certified Trainer for the National Center for Family Literacy, and is one of only a handful of trainer-practitioners. Pat's extensive experience in family literacy includes 17 years at Lanakila Elementary School, Liliuokalani Elementary School, and Likelike Elementary School. She was instrumental in implementing Read To Me International's award-winning prison

project, Fathers Bridging the Miles, which recently concluded.



Shannon Murphy, Executive Administrator

In childhood, Shannon molded her earliest philosophies (and imagination) through the worlds of Dr. Seuss and Maurice Sendak. This led her to consider careers in feline psychology, fox footwear, sailing in the direction of wild things, and other general adventuring. Her quest happily culminated in a career that is a little more exciting - Nonprofit Administration. Having served as Office Manager and Director of Operations with Honolulu nonprofit organizations in the medical research and social service sectors, she comes full circle and turns to her first love - sharing the

wonder of reading with a child. She has passed this on to her son (an adventurer in training) and hopes to spread the word to families everywhere!

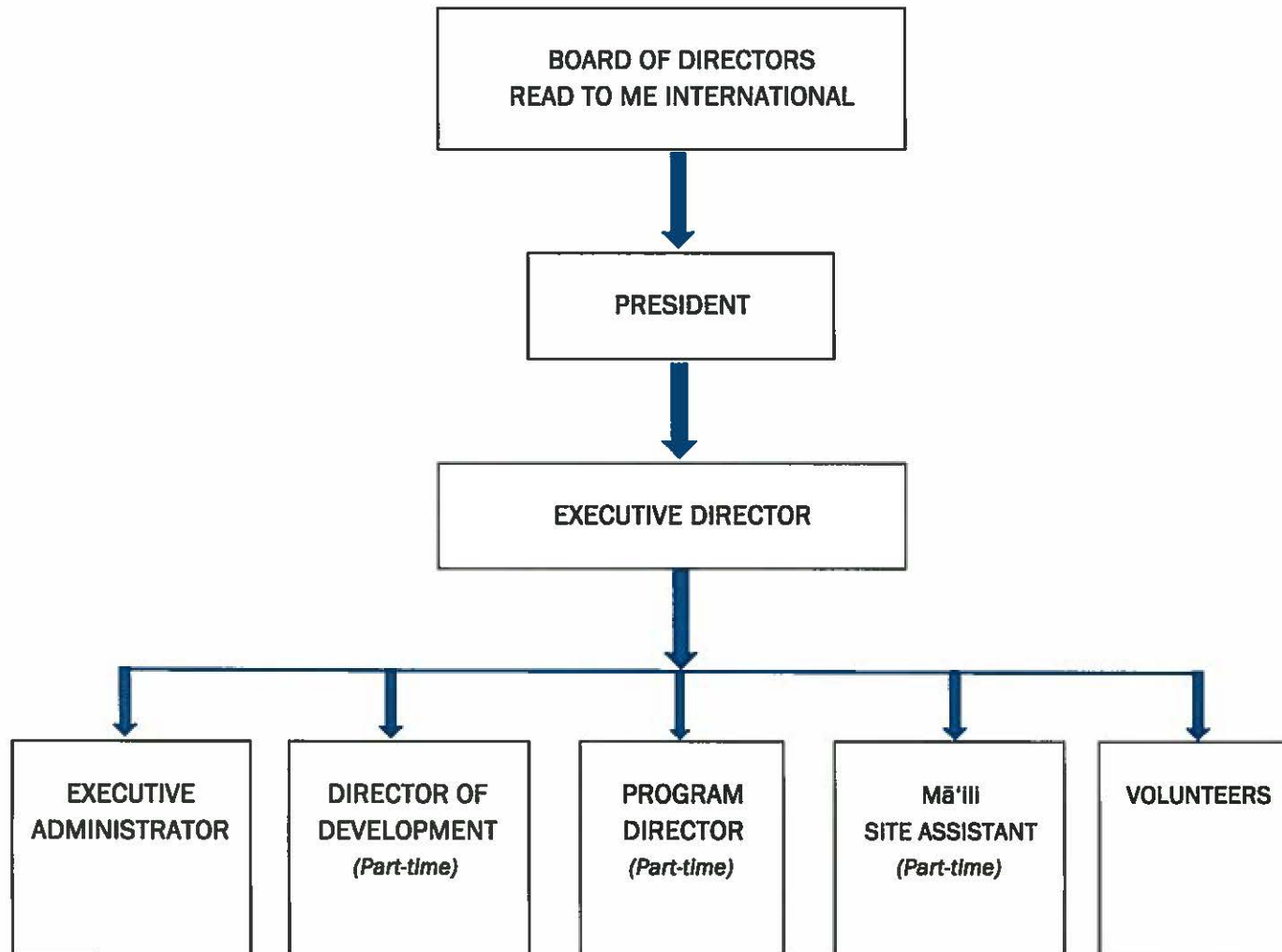


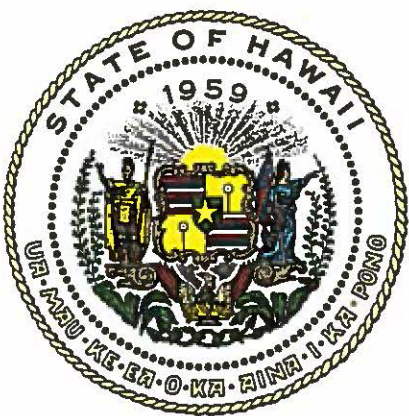
Shondell Palacio, Mā'ili Site Assistant

A true Nānākuli home grown resident, Shondell Palacio has spent all of her life in the Nānākuli neighborhood and is a graduate of Nānākuli High School. She has served her community most of her adult life, working with families and caregivers. Now, she is working part time with Read To Me International as the Mā'ili Site Assistant and continues to serve her community by providing tools, tips and resources to promote reading aloud through the RTM10 Program. In addition, she is going to the university working toward her B.Ed. degree.

B. Organization Chart

Read To Me International Foundation
2015 - ORGANIZATIONAL CHART





Department of Commerce and Consumer Affairs

CERTIFICATE OF GOOD STANDING

I, the undersigned Director of Commerce and Consumer Affairs of the State of Hawaii, do hereby certify that

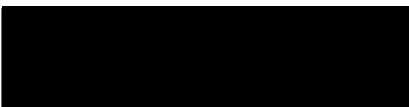
READ TO ME INTERNATIONAL FOUNDATION

was incorporated under the laws of Hawaii on 03/27/1996 ; that it is an existing nonprofit corporation; and that, as far as the records of this Department reveal, has complied with all of the provisions of the Hawaii Nonprofit Corporations Act, regulating domestic nonprofit corporations.



IN WITNESS WHEREOF, I have hereunto set my hand and affixed the seal of the Department of Commerce and Consumer Affairs, at Honolulu, Hawaii.

Dated: January 19, 2016



Director of Commerce and Consumer Affairs



STATE OF HAWAII
STATE PROCUREMENT OFFICE

CERTIFICATE OF VENDOR COMPLIANCE

This document presents the compliance status of the vendor identified below on the issue date with respect to certificates required from the Hawaii Department of Taxation (DOTAX), the Internal Revenue Service, the Hawaii Department of Labor and Industrial Relations (DLIR), and the Hawaii Department of Commerce and Consumer Affairs (DCCA).

Vendor Name: READ TO ME INTERNATIONAL FOUNDATION*

DBA/Trade Name: READ TO ME INTERNATIONAL FOUNDATION*

Issue Date: 01/19/2016

Status: Compliant

Hawaii Tax#: [REDACTED]
FEIN/SSN#: [REDACTED]
UI#: XXXXXX0185
DCCA FILE#: 103741

Status of Compliance for this Vendor on issue date:

Form	Department(s)	Status
A-6	Hawaii Department of Taxation	Compliant
	Internal Revenue Service	Compliant
COGS	Hawaii Department of Commerce & Consumer Affairs	Exempt
LIR27	Hawaii Department of Labor & Industrial Relations	Pending

Status Legend:

Status	Description
Exempt	The entity is exempt from this requirement
Compliant	The entity is compliant with this requirement or the entity is in agreement with agency and actively working towards compliance
Pending	The entity is compliant with DLIR requirement
Submitted	The entity has applied for the certificate but it is awaiting approval
Not Compliant	The entity is not in compliance with the requirement and should contact the issuing agency for more information

**DECLARATION STATEMENT OF
APPLICANTS FOR GRANTS PURSUANT TO
CHAPTER 42F, HAWAII REVISIED STATUTES**

The undersigned authorized representative of the applicant certifies the following:

- 1) The applicant meets and will comply with all of the following standards for the award of grants pursuant to Section 42F-103, Hawaii Revised Statutes:
 - a) Is licensed or accredited, in accordance with federal, state, or county statutes, rules, or ordinances, to conduct the activities or provide the services for which a grant is awarded;
 - b) Complies with all applicable federal and state laws prohibiting discrimination against any person on the basis of race, color, national origin, religion, creed, sex, age, sexual orientation, or disability;
 - c) Agrees not to use state funds for entertainment or lobbying activities; and
 - d) Allows the state agency to which funds for the grant were appropriated for expenditure, legislative committees and their staff, and the auditor full access to their records, reports, files, and other related documents and information for purposes of monitoring, measuring the effectiveness, and ensuring the proper expenditure of the grant.

- 2) If the applicant is an organization, the applicant meets the following requirements pursuant to Section 42F-103, Hawaii Revised Statutes:
 - a) Is incorporated under the laws of the State; and
 - b) Has bylaws or policies that describe the manner in which the activities or services for which a grant is awarded shall be conducted or provided.

- 3) If the applicant is a non-profit organization, it meets the following requirements pursuant to Section 42F-103, Hawaii Revised Statutes:
 - a) Is determined and designated to be a non-profit organization by the Internal Revenue Service; and
 - b) Has a governing board whose members have no material conflict of interest and serve without compensation.

Pursuant to Section 42F-103, Hawaii Revised Statutes, for grants used for the acquisition of land, when the organization discontinues the activities or services on the land acquired for which the grant was awarded and disposes of the land in fee simple or by lease, the organization shall negotiate with the expending agency for a lump sum or installment repayment to the State of the amount of the grant used for the acquisition of the land.

Further, the undersigned authorized representative certifies that this statement is true and correct to the best of the applicant's knowledge.

Read To Me International
(Typed Name of Individual or Organization)


(Signature)

January 22, 2016
(Date)

Judith Saranchock
(Typed Name)

Executive Director
(Title)