

**THE TWENTY-EIGHTH LEGISLATURE  
APPLICATION FOR GRANTS  
CHAPTER 42F, HAWAII REVISED STATUTES**

Type of Grant Request:

GRANT REQUEST – OPERATING

GRANT REQUEST – CAPITAL

"Grant" means an award of state funds by the legislature, by an appropriation to a specified recipient, to support the activities of the recipient and permit the community to benefit from those activities.

"Recipient" means any organization or person receiving a grant.

STATE DEPARTMENT OR AGENCY RELATED TO THIS REQUEST (LEAVE BLANK IF UNKNOWN): \_\_\_\_\_

STATE PROGRAM I.D. NO. (LEAVE BLANK IF UNKNOWN): \_\_\_\_\_

**1. APPLICANT INFORMATION:**

**Legal Name of Requesting Organization or Individual:**  
Ohana Arts

**Db:** Ohana Arts

**Street Address:** 95-729 Makaunulau St., Mililani, HI 96789

**Mailing Address:** P.O. Box 894755, Mililani, HI 96789

**2. CONTACT PERSON FOR MATTERS INVOLVING THIS APPLICATION:**

Name JENNIFER TAIRA

Title Executive & Co-Artistic Director

Phone # (866) 633-0430

Fax # \_\_\_\_\_

E-mail jenny@ohanaarts.org

**3. TYPE OF BUSINESS ENTITY:**

- NON PROFIT CORPORATION INCORPORATED IN HAWAII
- FOR PROFIT CORPORATION INCORPORATED IN HAWAII
- LIMITED LIABILITY COMPANY
- SOLE PROPRIETORSHIP/INDIVIDUAL
- OTHER

\_\_\_\_\_

**6. DESCRIPTIVE TITLE OF APPLICANT'S REQUEST:**

OHANA ARTS "PEACE ON YOUR WINGS" 2016 JAPAN EDUCATIONAL TOUR AND EXCHANGE.

4. FEDERAL TAX ID #: \_\_\_\_\_

5. STATE TAX ID #: \_\_\_\_\_

**7. AMOUNT OF STATE FUNDS REQUESTED:**

FISCAL YEAR 2017: \$ 50,000

**8. STATUS OF SERVICE DESCRIBED IN THIS REQUEST:**

- NEW SERVICE (PRESENTLY DOES NOT EXIST)
- EXISTING SERVICE (PRESENTLY IN OPERATION)

SPECIFY THE AMOUNT BY SOURCES OF FUNDS AVAILABLE AT THE TIME OF THIS REQUEST:

STATE \$ 0

FEDERAL \$ 0

COUNTY \$ 0

PRIVATE/OTHER \$ 80,000



**RECEIVED**  
1/22/16 *WJ*

ATIVE:

JENNIFER TAIRA, EXECUTIVE & CO-ARTISTIC DIRECTOR  
NAME & TITLE

1/21/16  
DATE

Rev 12/15/15

## Application for Grants

*If any item is not applicable to the request, the applicant should enter "not applicable".*

### I. Background and Summary

This section shall clearly and concisely summarize and highlight the contents of the request in such a way as to provide the State Legislature with a broad understanding of the request. Please include the following:

#### 1. Project Description & Background

Ohana Arts, a 501(c)(3) non-profit organization which aims to inspire and engage people through high caliber educational and professional arts programs, and to cultivate an international family (Ohana) in the Pacific by promoting world friendship and peace through the universal language of the arts, is requesting up to \$50,000 from the Hawaii State Legislature to support the educational Japan tour of the original musical, "Peace On Your Wings," a production written by Oahu based composer Jennifer Taira and lyricist Laurie Rubin and a youth cast comprised of 24 Ohana Arts students, ages 8-16, representing 15 schools around the island. "Peace On Your Wings" is a musical theater play which tells the story of Sadako Sasaki, a 12 year old girl who died from Leukemia resulting from the radiation caused by the atomic bomb dropped on Hiroshima. Sadako and the paper cranes she folded in hopes of fulfilling the Japanese legend stating that long life would be granted to the folder of a thousand origami cranes, have become international symbols of world peace, and her death inspired a youth movement to have a Hiroshima memorial built in honor of the child victims. However, "Peace On Your Wings," also explores Sadako in the context of who she was as an individual, a student, a friend, and addresses universal themes present in young people's lives, powerfully told by the voices of youth, touching intergenerational audiences, while sharing the message "Ichigo Ichie," meaning, "Today is the first and last day of your life."

After a successful world premiere on Oahu, a subsequent state-wide tour, and North American premiere in Los Angeles, Ohana Arts is currently in the planning stages of a tour to Japan which will take place from October 7th-October 16th, 2016 and will include outreach/school and public performances in Tokyo, Kyoto, and Hiroshima. Partnerships in each city are being cultivated for the purpose of a cultural exchange opportunity for our Hawaii based students to interact with students at a variety of schools in Japan. Plans are in place for Ohana Arts to partner with the American School in Japan in Tokyo, and for the production to be performed in the school's theater. In Kyoto, Ohana Arts is in talks with Honzan Japan and the Hongwanji Mission School to facilitate home stays with Japanese host families, educational visits to historic sites, and a performance for local schools. This leg of the tour is designed to provide the

opportunity for our students to begin developing friendships with students in Japan, and to gain an understanding of Japanese culture.

The production will then travel to Hiroshima, making it's final performances of the Japan tour. Partnerships are being cultivated with the YMCA chapters of Honolulu and Hiroshima, Rotary Clubs, the Japanese Chamber of Commerce Honolulu and Hiroshima sister cities to provide more cultural exchange opportunities, and to help garner audience awareness and support for the production. The cast and creative team of "Peace On Your Wings" is honored to bring Sadako's message shared through musical theater in the voices of youth back to the place where Sadako lived, and where she, her fellow atomic bomb survivors and victims, and their families continue to remember her story.

### **Peace On Your Wings Background**

Set in post-war, 1950s Japan, "Peace On Your Wings" follows the lives of middle school students in Hiroshima. When one of them falls seriously ill, the children's lives and their tenuous bonds with each other seem to unravel. But one girl's struggle and dreams for a better tomorrow teach the children-and the world-about courage, love and peace. The play's original musical score and book, written by Ohana Arts' Artistic & Executive Director and composer, Jennifer Taira, and co-Artistic Director and lyricist, Laurie Rubin, combines modern pop with Japanese influences to create a unique, uplifting, and inspiring show which successfully premiered on Oahu in November 2014. This original production, produced by Ohana Arts, with direction by Carolyn Lee and choreography by Danielle Bensky, enjoyed a sold out state-wide tour in January and February of 2015. Due to popular demand, "Peace On Your Wings" returned to Oahu for an encore run of performances in a redesigned production to commemorate the 70th anniversaries of the Hiroshima and Nagasaki bombings. On opening night, Mayor Kirk Caldwell, who was in attendance, proclaimed August 6th 2015 "Peace On Your Wings Day." Subsequently, the production gave its North American premiere at the Aratani Theatre in Los Angeles, co-presented by Japanese American Cultural & Community Center in September, with standing ovations at every performance. "Peace On Your Wings" was honored by the City Council, the United Nations Association of Hawaii, and was invited to give the Invocation for the House of Representatives in April of this year.

"Peace On Your Wings" will continue to spread the message of Sadako and her cranes to cities around the United States and beyond. Ohana Arts is in the early planning stages of a tour in the Spring of 2017 to the West Coast and Northwest, including performances in San Francisco, Portland, and Seattle in partnership with the Japanese Culture Centers in their respective regions, as well as local universities, elementary, middle, and high schools..

The Peace On Your Wings project, already having proven successful as a means to educate youth and adults about this important piece of history, aims to widen its reach to diverse audiences in educational and professional settings alike to inspire people to actively spread Sadako's message of peace, and to raise awareness of Sadako's story and those of many like her.

### **History of Ohana Arts**

Ohana Arts, a 501(c)(3) non-profit organization which aims to inspire and engage people through high caliber educational and professional arts programs, and to cultivate an international family (Ohana) in the Pacific by promoting world friendship and peace through the universal language of the arts, was founded in January 2010 by Jennifer Taira, sought after composer, pianist, and clarinetist, Carolyn Lee, director of the Hongwanji Mission School Performing Theater, and Laurie Rubin, opera singer and recitalist who concertizes internationally. Having received degrees in their respective fields on the mainland, Jennifer, Carolyn, and Laurie realized the need for more exposure to the arts in Hawaii which would help cultivate and nurture the local talent, while building upon Hawaii's already rich culture. The first annual Ohana Arts summer program was launched in 2010 with a musical theater workshop, culminating in a fully staged musical production comprised of 23 students island-wide, ages 8-18. Ohana Arts has expanded to offer three additional programs, including morning acting, dance, and voice intensives, a composer-performer workshop for advanced middle and high school musicians, and Ohana Arts Keiki, a program for outgoing 1st and 2nd graders to receive a comprehensive introduction to musical theater techniques. Over 80 students from over 30 schools around the island participated in Ohana Arts programs in the summer of 2015. Currently, Ohana Arts classes and rehearsals are held at the Hongwanji Mission School, and are cross registered through the summer school. main stage productions take place at Mamiya Theatre on the campus of St. Louis Schools.

Ohana Arts has put up a number of fully staged productions with professional caliber sets, costumes, and live orchestras, including "Little Shop of Horrors," "Hairspray," "Footloose," "Oliver," and many more. These productions have been featured in Midweek, the Star Advertiser, and Honolulu Family Magazine. Cast members have been featured on KITV News, KHON2 News, and Hawaii News Now Sunrise, as well as the Perry and Price show on KSSK, and Hawaii Public Radio. Ohana Arts students have gone on to study at universities with prestigious musical theater and songwriting programs with world renowned faculty in Los Angeles, New York, and beyond. Jennifer, Carolyn, and Laurie have been joined by such teaching artists as New York based choreographer Danielle Hannah Bensky, acting teacher Jill Bolstridge who has coached children starring in Broadway productions, Liz Piccoli who has danced at the Metropolitan Opera and Chicago Lyric Opera, composer Gordon Beeferman whose works have been commissioned by American Brass Quintet and Eighth Blackbird, and Scarlet Keys who is a staff songwriter with Warner/Chappell and a professor at Berklee College of Music.

In the summer of 2017, Ohana Arts will open its doors to students from the neighbor islands, the mainland US, and abroad for an international arts camp which will be the first of its kind on Oahu. This will provide a unique cultural exchange opportunity to foster world friendship and camaraderie through the arts in a competitive yet nurturing setting. Ohana Arts has further plans to open the first ever performing arts high school in Hawaii which will provide specialized educational opportunities and training for Hawaii's most talented youth in the performing arts in order to prepare them for the competitive careers that await them. Students in other states including California, New York, Michigan, and many others are fortunate to have an abundance of choices for competitive performing arts high schools, and Ohana Arts Academy will bring equal opportunities for students in Hawaii.

## 2. Goals & Objectives

**Goal #1:** To tell Sadako’s story and to impart this historical event through the genre of musical theater. This production gives voice to those in Hiroshima whose stories had previously not been told through theater, and add a different perspective and set of experiences to convey the necessity to spread the message of peace.

**Goal #2:** To make this production of *Peace On Your Wings* accessible and available to as many schools, and families with children and teens as possible around the world.

**Objective #1:** To offer shows during the school day in addition to public evening shows to provide opportunities for elementary, middle, and high schools in the area to attend as a field trip.

**Objective #2:** To provide Japanese translations which will be projected alongside the live show.

**Goal #3:** To educate youth and the general public about how historical events can inspire people worldwide to campaign for peace.

**Objective #1:** To arrange student exchange and fellowship opportunities with the “Peace On Your Wings” cast and local Japanese students.

**Objective #1:** To facilitate educational discussions regarding the impact of the war and the message of “Ichigo Ichie” during student exchange activities.

**Objective #2:** To continue educating the “Peace On Your Wings” student cast members by having them experience the people and places this historical event has effected. For example, visiting the Hiroshima Peace Memorial Museum, interacting with Hibakusha (atomic bomb survivors), and learning about Japanese culture.

**Goal #4:** To continue to tour “Peace On Your Wings” to school districts and community centers around the world to help spread the message of Sadako Sasaki, *Peace On Your Wings* and the mission of Ohana Arts.

**Objective #1:** To plan a tour to three cities in Japan to help spread Sadako’s message.

**Objective #2:** To plan future tours in the U.S. and beyond to raise awareness of Sadako’s message and this very important piece of history.

## 3. The public purpose and need to be served;

Sadako’s story is not told widely in Japan, nor is it a part of the curriculum in most cities and prefectures. “Peace On Your Wings” shares the importance for Sadako's story to be told so that our future generations will fully understand history in hopes that devastating events created by mankind will never repeat themselves.

Ohana Arts aims to serve audiences of families, school children, and educators in hopes of sparking important discussions of the kinds of actions our future generations can take to

cultivate and promote peace, how to resolve conflicts in a nonviolent manner, and how to apply what has been learned from important events in history to our current events and time.

“Peace On Your Wings” also speaks to the every day goings on at school faced by students who yearn to fit in, and whose greatest fear is to be called out for their differences. Teachers and students alike who have seen the play have expressed how relatable the play’s content is, saying that they could pick out the exact child in his or her class that fits the traits of the characters in the play. The message of the show is to appreciate people for who they are, and to put differences aside to work together for the common good. There are very few pieces of musical theater that speak to the issues faced by children and teens, and “Peace On Your Wings” encourages youth to express themselves through the performing arts, and to reach out to others around them who are facing similar turmoil in trying to fit in.

**4. Describe the target population to be served; and**

The educational tour of “Peace On Your Wings” to Japan will establish a relationship between schools in Tokyo, Kyoto, and Hiroshima through the cultural exchange opportunities between educators and students, thus opening the door for future collaboration and Ohana Arts’ ability to serve students at these respective schools in our international performing arts camp, enabling students from Hawaii and Japan to continue building strong relationships through a common interest and passion for the arts.

**5. Describe the geographic coverage.**

The “Peace On Your Wings” Japan tour will serve schools in Tokyo, Kyoto, and Hiroshima, as well as family audiences from the general public in those cities. Future effects of this tour will mean that hundreds of students around Oahu and the neighbor island will be served as continued cultural exchange will take place at Ohana Arts’ home base for years to come.

**II. Service Summary and Outcomes**

The Service Summary shall include a detailed discussion of the applicant’s approach to the request. The applicant shall clearly and concisely specify the results, outcomes, and measures of effectiveness from this request. The applicant shall:

**1. Describe the scope of work, tasks and responsibilities;**

Ohana Arts is partnering with JTB Travel which will arrange the tour itinerary, transportation, hotel stays, train tickets, and a tour coordinator. We are currently seeking companies to help Ohana Arts secure work visas which will permit us to perform in Japan. We are also in the process of seeking a theater coordinator to liaise with our creative team and theater personnel in Japan who will act as translator and tour manager.

Our traveling party of 50 people consists of 24 cast members, ages 7-15, 8 chaperones, a volunteer physician who can tend to the health needs or concerns of our cast and crew throughout the tour, the production set designer, the production lighting designer, the production sound engineer/designer, the production director, the production music director, the production voice coach, the production choreographer, and experienced volunteer stage hands.

Health forms will be disseminated to the traveling party so that the doctor on tour will be able to address individual allergy and other health issues.

The production's director, choreographer, sound, lighting, and set crew will be in continued conversation with the performance venues in Japan about theater specs, equipment needs, and personnel to assist with the technical aspects of rehearsals in each venue.

Ohana Arts administration is currently working with our partners in each city to promote the performances to a wide audience, and will work to secure radio and TV news appearances, print press, and a social media presence to attract interest and awareness of our tour. Ohana Arts is in contact with the YMCA, the Honpa Hongwanji Mission of Hawaii, Honzan Japan, Rotary Clubs in Honolulu with sister city relationships in Japan, the American School in Japan, the Japanese Chamber of Commerce, and the Hiroshima Kenjin Kai.

Several chaperone meetings will be planned to evaluate safety procedures in place from previous tours of the show, to refine safety measures, to ensure that cast members are monitored at all times while in the hotels, on public transportation, walking between destinations, and in airports.

The cast of "Peace On Your Wings," having toured and performed the show many times, will need minimal rehearsals both prior to and in Japan. Rehearsal time is scheduled at each venue so that cast members can get used to each individual stage, and for the tech crew to be able to alter settings for each venue.

**2. Provide a projected annual timeline for accomplishing the results or outcomes of the service;**

February 2016: Performance venues secured

March 2016: Initial Informational Meeting for Cast, Parents, Crew, and Staff

May 2016: Staff, cast, volunteer, and chaperone traveling list confirmed

June 2016: Travel itinerary, arrangements and logistics confirmed, deposits paid

July 2016: Passports submitted

September 2016: Rehearsals Commence (Saturdays, 9am-12pm)

Travel Itinerary:

October 7th: Depart Honolulu, HI for Tokyo

October 8th: Arrival in Tokyo, Set Move-In

October 9th: Re-block/Tech and Dress Rehearsal

October 10th: School Performance (11am)

Student activity (2pm)

Public performance (7pm)

October 11th: Travel to Kyoto/Homestay



- October 12th: Kyoto Tour and Performance at Kyoto School
- October 13th: Travel to Hiroshima  
Set Move/In, Tech/Dress Rehearsal
- October 14th: School Performance (10am)  
Student activity (12pm)  
Public performance (7pm)
- October 15th: Visit the Hiroshima Museum (Performance)  
Travel back to Tokyo
- October 16th: Depart for Honolulu from Tokyo (Haneda)

**3. Describe its quality assurance and evaluation plans for the request. Specify how the applicant plans to monitor, evaluate, and improve their results; and**

Ohana Arts distributes evaluation forms to its students participating in the summer program to help them assess their own work, and to provide feedback to help us improve our programs. We will include specific questions about the production to gauge what they've learned through the rehearsal and performance process. In addition, Ohana Arts disseminates evaluation forms to parents of cast members at the end of the program. On these forms, parents are encouraged to comment on content, how appropriate they feel the choice of production is for the age and experience of their children, the quality of the work, and the overall experience their children had in Ohana Arts. In addition, Ohana Arts receives significant audience feedback about the quality of productions from the acting, the sets, and costumes to the quality of the chosen work itself.

After each tour, chaperones, volunteer doctor, and members of the creative team are required to turn in reports about the logistics, relationships fostered in the cultural exchange, and any issues that arise previously unforeseen by the planning committees. Reports are presented to the Ohana Arts board, and discussions to continually improve our policies, safety measures, and opportunities to collaborate with our partnering organizations are conducted during board and planning committee meetings.

**4. List the measure(s) of effectiveness that will be reported to the State agency through which grant funds are appropriated (the expending agency). The measure(s) will provide a standard and objective way for the State to assess the program's achievement or accomplishment. Please note that if the level of appropriation differs from the amount included in this application that the measure(s) of effectiveness will need to be updated and transmitted to the expending agency.**

Ohana Arts will submit a qualitative report summarizing the evaluation surveys received from cast, staff, parents, volunteers, and audience members who will provide information on the effectiveness, impact and success of the "Peace On Your Wings" Japan tour.

### III. Financial

#### Budget

- 1. The applicant shall submit a budget utilizing the enclosed budget forms as applicable, to detail the cost of the request.**

*See budget forms attached.*

- 2. The applicant shall provide its anticipated quarterly funding requests for the fiscal year 2017.**

Quarter 1	Quarter 2	Quarter 3	Quarter 4	Total Grant
\$50,000				\$50,000

- 3. The applicant shall provide a listing of all other sources of funding that they are seeking for fiscal year 2017**

**ADDITIONAL APPLICATIONS FOR FUNDING:**

Tomodachi Foundation

US-Japan Foundation

Harry Chapin Foundation

Japan Foundation

Sasakawa Peace Foundation

Tateuchi Foundation

Mayor’s Office of Culture and the Arts, City and County of Honolulu

Requests for Corporate Sponsors:

*Bank of Hawaii*

*First Hawaiian Bank*

*Diamond Enterprises*

*Upper Crust Enterprises*

*JTB Travel*

*Yamaha Corporation*

- 4. The applicant shall provide a listing of all state and federal tax credits it has been granted within the prior three years. Additionally, the applicant shall provide a listing of all state and federal tax credits they have applied for or anticipate applying for pertaining to any capital project, if applicable.**

*Not Applicable*

**5. The applicant shall provide a listing of all federal, state, and county government contracts and grants it has been and will be receiving for program funding.**

Honolulu City and County (Mayor’s Office of Culture and the Arts) Grant:  
Received \$5,000 (2014)  
Received \$5,000 (2015)  
Applied \$10,000 (2016)

**6. The applicant shall provide the balance of its unrestricted current assets as of December 31, 2015:**

Current Balance Unrestricted Assets (as of December 31, 2015): \$82,353.97

**IV. Experience and Capability**

**A. Necessary Skills and Experience**

Ohana Arts has notable experience with touring the cast and crew of “Peace On Your Wings”, beginning with a statewide tour in 2015 to Maui, Kauai, and Hawaii Islands, and then most recently, traveling to Los Angeles, California for its North American premiere. The production staff, as well as volunteer parents and chaperones have established a system of communication, scheduling, and travel that will easily transfer when taking the production to Japan this fall. Ohana Arts also employs professional production staff who are qualified to work in a professional theater. In addition, Ohana Arts plans to employ two additional bi-lingual staff members to help facilitate production set up and travel on the trip. Prior to “Peace On Your Wings”, Ohana Arts has had ample experience producing fully staged musical productions with professional lighting design, sound design, and set design since 2010.

**B. Facilities**

Rehearsals for *Peace On Your Wings* will take place at the Hongwanji Mission School, which is where all Ohana Arts classes and rehearsals take place. Performance facilities in Japan are tentatively scheduled for the American School in Japan’s state-of-the art theater, and Phoenix Hall in Hiroshima Peace Park. Both theaters are well-equipped to host the *Peace On Your Wings* production.

## V. Personnel: Project Organization and Staffing

### A. Proposed Staffing, Staff Qualifications, Supervision and Training

Ohana Arts will employ a highly qualified and experienced production staff to ensure the success of the traveling production. This particular staff has previously worked to produce *Peace On Your Wings* at Hawaii Theatre in downtown Honolulu, as well as at the Aratani Theatre in downtown Los Angeles. The staff includes:

**Jennifer Taira (Executive & Co-Artistic Director, Composer/Music Director/Conductor):** Peace On Your Wings composer and co-book writer Jenny Taira is known in Hawaii and beyond for her work in several genres, including musical theater, pop and choral music. She and singer Laurie Rubin recently formed the pop duo, PureLand, and she is songwriter and producer on their album, Summer Night in Winter. Jennifer is co-founder of Musique à la Mode Chamber Music Ensemble and the Music at the Bowery Series in Manhattan’s East Village. As a clarinetist and pianist, she has performed extensively throughout the United States. Recent performances include concerts at Stanford University; The 92nd Street Y in New York City; Hawaii Vocal Arts Ensemble Masterworks Festival; Carnegie Hall; The Kennedy Center; the Greenwich Music Festival; National Press Club; the State Department and French Embassy in Washington, D.C.; Ruth Eckard Hall in Tampa, Florida; West Chester University and Zipper Hall in Los Angeles, California. Career highlights include receiving top prizes in the Hennings-Fischer Foundation Young Artist Competition and Kingsville International Competition, as well as a solo performance with the Burbank Philharmonic. She has performed with the Moscow Chamber Orchestra, the Cleveland Orchestra, New Britain Symphony and the Royal Hawaiian Band. She has been the recipient of many awards and scholarships, including a full fellowship to study at the Kent/Blossom Music Festival. An advocate for arts education, Ms. Taira is one of the co-founders of Ohana Arts and conductor of the annual culminating productions pit orchestra.

**Laurie Rubin (Co-Artistic Director, Lyricist/Vocal Director):**

Peace On Your Wings lyricist and co-book writer Laurie Rubin is an author, motivational speaker and singer who performs in a variety of genres, including classical, pop, and musical theater. New York Times critic Anthony Tommasini praised her “compelling artistry,” “communicative power,” and the “earthy, rich, and poignant qualities” of her voice. Los Angeles Times critic Mark Swed described her as “a young mezzo-soprano whose voice is darkly complex and mysteriously soulful and who adds intense emphasis to every word of text.” Laurie has performed with the likes of conductor John Williams and opera star Frederica von Stade. She has given concerts at London’s Wigmore Hall, The

Kennedy Center, Lincoln Center and the White House, among others, presenting programs that tell her unique story through music. Her album *Do You Dream In Color?* was released in 2012, the same year as her memoir of the same name, published by Seven Stories Press. The title track of the album, co-written by Laurie and composer Bruce Adolphe, premiered in its orchestral version in a performance she gave at the International Human Rights Conference in Lucerne, Switzerland and in a performance she gave with the LA Chamber Orchestra. Laurie is co-founder and Associate Artistic Director of Ohana Arts. In 2013, she embarked on an extensive North American concert and book tour. She and composer/producer, Jenny Taira form the pop duo PureLand. Their first single and music video, "The Girl I Am," was released in March 2014.

**Carolyn Lee (Co-Artistic Director/Stage Director):** Carolyn Lee is Co-founder and Associate Artistic Director of Ohana Arts. She is also the resident stage director for the Ohana Arts summer musical theatre production workshop. She was born and raised in Mililani, Hawaii, where her passion for theatre began at Kipapa Elementary School with inspirational teacher, Mrs. Yvonne Toma. Carolyn attended Mililani High School and went on to receive a bachelor of arts degree in Drama from the University of Portland. Her principle instructors were acting professors Ed Bowen and Mindy Logan and voice professor Jill Sotero. She has performed in productions of *A Midsummer Night's Dream*, *Sweet Charity*, *The House of Bernarda Alba*, *The Crucible* and *The Wiz*. This is Carolyn's eighth year as the drama teacher and production coordinator at Hongwanji Mission School. She has directed more than a dozen musicals through Hongwanji Mission School and Ohana Arts. Her most recent work includes *Little Shop of Horrors*, *Peter Pan Jr.*, and *Annie, Jr.*

**Danielle Bensky (Choreographer):** Peace On Your Wings choreographer Danielle Hannah Bensky is a Manhattan native, who regularly grande jetés her way across New York City's, Upper East Side, where she currently resides. She has choreographed/staged more than 30 full-scale musicals in addition to various other original works for The New York Musical Theater Festival (NYMF), Stagedoor Manor, York College (CUNY) and the Afterwork Theater Project in conjunction with the 14th street Y. This is Danielle's fourth year working for Disney Theatricals. Starting with the company in 2011 as a performer for Disney Cruise Line, Dani has since moved to the theatrical events department. Most recently, Dani has concluded productions of *Rent*, *Once on This Island* and *All Shook Up*. Her favorite past projects include but are not limited to *Carousel*, *Cabaret*, *Dreamgirls*, *Les Miserables*, *Spring Awakening* and a new work that was created specifically for NYMF with TONY winner Lena Hall. She can be found teaching at The Harbor Conservatory, Just Off Broadway Academy and Elements fitness studio. Dani's training consists of all styles and genres from The Joffrey Ballet School, Alvin Ailey, New Jersey Ballet, Professional Performing

Arts School and the Neighborhood Playhouse. She was a 2010 Princess Grace Award nominee and is staffed as an adjudicator for the OnPoint National Dance Competition.

**William Kirkham (Lighting Designer):** Recent credits include: Moby Dick, The Little Prince (2014 Jeff Award Recipient) (Lookingglass Theatre Co.); Antigone (Sideshow Theatre Company); The Boy Who Loved Monsters and the Girl Who Loved Peas (Childsplay, AZ); Three Sisters, The Tennessee Williams Project (The Hypocrites); The King & I, The Producers, Peter Pan, The Secret Garden (Arizona Broadway Theatre); A Year with Frog and Toad, Bud not Buddy (Chicago Children's Theatre); The Iron Stag King, Pt. 1 (2013 Jeff Awards Nominee) (The House Theatre); Life and Limb (Steppenwolf Theatre Company).  
www.wckirkham.com

**Patrick Lord (Scenic/Projection Designer):** Patrick has designed scenery and projections at numerous theatres in Washington DC, Boston MA, and Austin TX. He is also the founder and creative director for The 5th Wall Project, an arts service for youth communities. He holds an MFA from the University of Texas at Austin and a BFA from Emerson College. More of his work can be seen at www.patrickwlord.com.

**Anthony Sutton (Sound Designer/Engineer):** Anthony is from San Jose, California and has designed sound for many theatre companies in the Bay Area including Theatreworks, Foothill College, Palo Alto Players, Renegade Theatre Experiment. He is the lead sound designer for Children's Musical Theatre of San Jose. Credits include: Tarzan, White Christmas, In The Heights, Mary Poppins and American Idiot, just to name a few. Anthony currently serves as the Master Electrician and Sound Engineer at San Jose State University.

**B. Organization Chart**

The applicant shall illustrate the position of each staff and line of responsibility/supervision. If the request is part of a large, multi-purpose organization, include an organization chart that illustrates the placement of this request.

*Please see attached.*

**C. Compensation**

*Executive Director/Co-Artistic Director: \$9,000*

*Co-Artistic Director: \$6,000*

*Co-Artistic Director: \$6,000*

## **VI. Other**

### **A. Litigation**

The applicant shall disclose any pending litigation to which they are a party, including the disclosure of any outstanding judgement. If applicable, please explain.

*Not Applicable*

### **B. Licensure or Accreditation**

The applicant shall specify any special qualifications, including but not limited to licensure or accreditation that the applicant possesses relevant to this request.

*Not Applicable*

### **C. Private Educational Institutions**

The applicant shall specify whether the grant will be used to support or benefit a sectarian or non-sectarian private educational institution. Please see Article X, Section 1, of the State Constitution for the relevance of this question.

*Not Applicable*

### **D. Future Sustainability Plan**

Following the educational Japan tour, “Peace on Your Wings” will embark on several tours of school and public performances around the United States. In the Spring of 2017, plans are in the early stages to bring the show to schools in San Francisco, Portland, and Seattle, paired with a customized “Peace On Your Wings” curriculum that utilizes the well known book, “Sadako and the Thousand Paper Cranes” and teaches students the history of the atomic bomb and its impact in the international peace movement. Ohana Arts is establishing partnerships with the Japanese Culture Centers in San Francisco and Seattle to secure venues, foster collaborations with universities, as well as elementary, middle, and high schools. Ohana Arts and its partnering organizations in each city will work together to seek funding from corporate sponsors and private donors, as well as to apply to local and national granting organizations for which our project fulfills their respective missions and qualifications.

Due to the success of “Peace On Your Wings” in Hawaii and Los Angeles, Ohana Arts is receiving interest from presenting organizations in New York, such as Asia Society and La Guardia College Performing Arts Center for possible performances, and an East Coast tour is being explored.

In addition, Ohana Arts executive director Jenny Taira and co-artistic director, Laurie Rubin will present “Peace On Your Wings” at a conference for over 800 superintendents of school districts around the country so that the show may be performed by casts of students from school drama programs around the country.

The production will be made available for distribution to schools, performing arts programs, and regional and community theaters around the country.

**E. Certificate of Good Standing (If the Applicant is an Organization)**

If the applicant is an organization, the applicant shall submit one (1) copy of a certificate of good standing from the Director of Commerce and Consumer Affairs that is dated no earlier than December 1, 2015.

*Certificate is attached.*



## BUDGET REQUEST BY SOURCE OF FUNDS

Period: July 1, 2016 to June 30, 2017

Applicant: OHANA ARTS

BUDGET CATEGORIES	Total State Funds Requested (a)	Total Federal Funds Requested (b)	Total County Funds Requested (c)	Total Private/Other Funds Requested (d)
A. PERSONNEL COST				
1. Salaries	27,025			17,475
2. Payroll Taxes & Assessments				
3. Fringe Benefits				
<b>TOTAL PERSONNEL COST</b>	<b>27,025</b>			<b>17,475</b>
B. OTHER CURRENT EXPENSES				
1. Airfare, Inter-Island				
2. Insurance				
3. Lease/Rental of Equipment	17,000			
4. Lease/Rental of Space				10,000
5. Staff Training				
6. Supplies				2,000
7. Telecommunication				
8. Utilities				
9. Cargo/Shipping	5,975			6,025
10. Airfare, International				44,720
11. Ground Transportation/Train				32,000
12. Lodging				28,000
13. Meals				16,000
14.				
15.				
16.				
17.				
18.				
19.				
20.				
<b>TOTAL OTHER CURRENT EXPENSES</b>	<b>22,975</b>	<b>0</b>	<b>0</b>	<b>138,745</b>
C. EQUIPMENT PURCHASES		0	0	
D. MOTOR VEHICLE PURCHASES		0	0	
E. CAPITAL		0	0	
<b>TOTAL (A+B+C+D+E)</b>	<b>50,000</b>	<b>0</b>	<b>0</b>	<b>156,220</b>
<b>SOURCES OF FUNDING</b>		Budget Prepared By:		
(a) Total State Funds Requested	50,000	<i>Jennifer Taira</i> 808-744-5501 Phone		
(b) Total Federal Funds Requested	0			
(c) Total County Funds Requested	0	1/22/16 Date		
(d) Total Private/Other Funds Requested	156,220			
<b>TOTAL BUDGET</b>	<b>206,220</b>	<i>Jennifer Taira, Executive &amp; Co-Artistic Director</i> Name and Title (Please type or print)		

Applicant: OHANAARTS Period: July 1, 2016 to June 30, 2017

POSITION TITLE	FULL TIME EQUIVALENT	ANNUAL SALARY A	% OF TIME ALLOCATED TO GRANT REQUEST B	TOTAL STATE FUNDS REQUESTED (A x B)
Sound Engineer/Designer		\$3,500.00	70.00%	\$ 2,450.00
Lighting Designer/Board Operator		\$3,500.00	70.00%	\$ 2,450.00
Musicians (18 Musicians)		\$10,800.00	70.00%	\$ 7,560.00
Stage Manager		\$3,500.00	70.00%	\$ 2,450.00
Projection/Set Designer		\$3,500.00	70.00%	\$ 2,450.00
Rigger		\$1,200.00	70.00%	\$ 840.00
Spot Operator		\$1,000.00	60.00%	\$ 600.00
Production Translator/Manager		\$1,000.00	45.00%	\$ 450.00
Director		\$1,000.00	45.00%	\$ 450.00
Music Director/Conductor		\$1,000.00	45.00%	\$ 450.00
Choreographer		\$1,000.00	45.00%	\$ 450.00
Vocal Director		\$1,000.00	45.00%	\$ 450.00
Costume Manager		\$1,000.00	45.00%	\$ 450.00
Make Up Supervisor		\$1,000.00	45.00%	\$ 450.00
Japan Theatre Production Staff		\$7,000.00	50.00%	\$ 3,500.00
Supertitles Operator		\$3,500.00	45.00%	\$ 1,575.00
<b>TOTAL:</b>				<b>27,025.00</b>

JUSTIFICATION/COMMENTS:

**GOVERNMENT CONTRACTS AND / OR GRANTS**

Applicant: OHANA ARTS

Contracts Total:

	<b>CONTRACT DESCRIPTION</b>	<b>EFFECTIVE DATES</b>	<b>AGENCY</b>	<b>GOVERNMENT ENTITY</b> (U.S. / State / Haw / Hon / Kau / Mau)
1	Mayor's Office of Culture and the Arts Grant	1/1/2014-12/31/2014		Honolulu City & County
2	Mayor's Office of Culture and the Arts Grant	1/1/2015-12/31/2015		Honolulu City & County
3				
4				
5				
6				
7				
8				
9				
10				
11				
12				
13				
14				
15				
16				
17				
18				
19				
20				
21				

**DECLARATION STATEMENT OF  
APPLICANTS FOR GRANTS PURSUANT TO  
CHAPTER 42F, HAWAI'I REVISED STATUTES**

The undersigned authorized representative of the applicant certifies the following:

- 1) The applicant meets and will comply with all of the following standards for the award of grants pursuant to Section 42F-103, Hawai'i Revised Statutes:
  - a) Is licensed or accredited, in accordance with federal, state, or county statutes, rules, or ordinances, to conduct the activities or provide the services for which a grant is awarded;
  - b) Complies with all applicable federal and state laws prohibiting discrimination against any person on the basis of race, color, national origin, religion, creed, sex, age, sexual orientation, or disability;
  - c) Agrees not to use state funds for entertainment or lobbying activities; and
  - d) Allows the state agency to which funds for the grant were appropriated for expenditure, legislative committees and their staff, and the auditor full access to their records, reports, files, and other related documents and information for purposes of monitoring, measuring the effectiveness, and ensuring the proper expenditure of the grant.
  
- 2) If the applicant is an organization, the applicant meets the following requirements pursuant to Section 42F-103, Hawai'i Revised Statutes:
  - a) Is incorporated under the laws of the State; and
  - b) Has bylaws or policies that describe the manner in which the activities or services for which a grant is awarded shall be conducted or provided.
  
- 3) If the applicant is a non-profit organization, it meets the following requirements pursuant to Section 42F-103, Hawai'i Revised Statutes:
  - a) Is determined and designated to be a non-profit organization by the Internal Revenue Service; and
  - b) Has a governing board whose members have no material conflict of interest and serve without compensation.

Pursuant to Section 42F-103, Hawai'i Revised Statutes, for grants used for the acquisition of land, when the organization discontinues the activities or services on the land acquired for which the grant was awarded and disposes of the land in fee simple or by lease, the organization shall negotiate with the expending agency for a lump sum or installment repayment to the State of the amount of the grant used for the acquisition of the land.

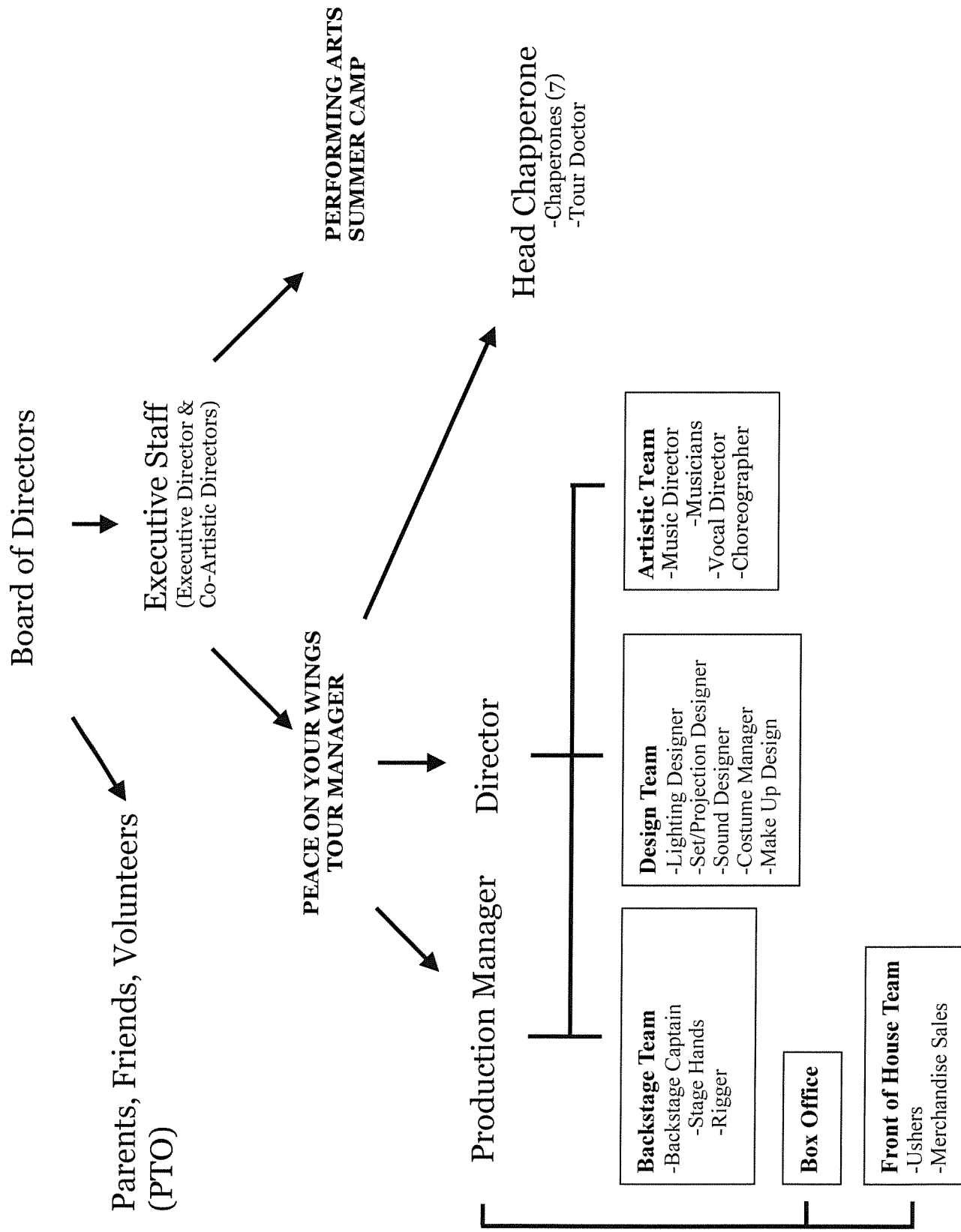
Further, the undersigned authorized representative certifies that this statement is true and correct to the best of the applicant's knowledge.

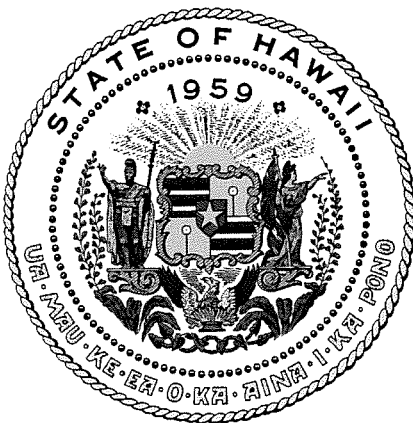
\_\_\_\_\_  
(Type name of organization)

\_\_\_\_\_  
(Date) 1/22/16

Jennifer Taira Executive & Co-Artistic Director  
(Typed Name) (Title)

# OHANA ARTS STAFF FLOW CHART 2016-2017





## Department of Commerce and Consumer Affairs

### CERTIFICATE OF GOOD STANDING

I, the undersigned Director of Commerce and Consumer Affairs of the State of Hawaii, do hereby certify that

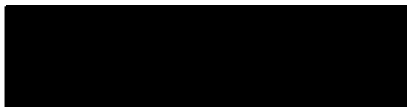
OHANA ARTS

was incorporated under the laws of Hawaii on 05/12/2010 ; that it is an existing nonprofit corporation; and that, as far as the records of this Department reveal, has complied with all of the provisions of the Hawaii Nonprofit Corporations Act, regulating domestic nonprofit corporations.



IN WITNESS WHEREOF, I have hereunto set my hand and affixed the seal of the Department of Commerce and Consumer Affairs, at Honolulu, Hawaii.

Dated: January 21, 2016



Director of Commerce and Consumer Affairs