

House District 29

Senate District 13

THE TWENTY-EIGHTH LEGISLATURE
APPLICATION FOR GRANTS
CHAPTER 42F, HAWAII REVISED STATUTES

Log No:

For Legislature's Use Only

Type of Grant Request:

GRANT REQUEST – OPERATING

GRANT REQUEST – CAPITAL

"Grant" means an award of state funds by the legislature, by an appropriation to a specified recipient, to support the activities of the recipient and permit the community to benefit from those activities.

"Recipient" means any organization or person receiving a grant.

STATE DEPARTMENT OR AGENCY RELATED TO THIS REQUEST (LEAVE BLANK IF UNKNOWN):

STATE PROGRAM I.D. NO. (LEAVE BLANK IF UNKNOWN): _____

1. APPLICANT INFORMATION:

Legal Name of Requesting Organization or Individual:
KIDS HURT TOO HAWAII
Dba: Kids hurt too

Street Address: 245 North Kukui Street, Suite 203, Honolulu, HI 96817

Mailing Address: P.O. Box 11260, Honolulu, HI 96828

2. CONTACT PERSON FOR MATTERS INVOLVING THIS APPLICATION:

Name CYNTHIA WHITE

Title Executive Director

Phone # 808-545-5683

Fax # 808-545-5417

E-mail Cynthia.kidshurttoo@gmail.com

3. TYPE OF BUSINESS ENTITY:

- NON PROFIT CORPORATION INCORPORATED IN HAWAII
- FOR PROFIT CORPORATION INCORPORATED IN HAWAII
- LIMITED LIABILITY COMPANY
- SOLE PROPRIETORSHIP/INDIVIDUAL
- OTHER

6. DESCRIPTIVE TITLE OF APPLICANT'S REQUEST:

PROVIDE FUNDING TO SUPPORT THERAPEUTIC PEER GROUP AND MENTORING PROGRAMS FOR GRIEVING AND TRAUMATIZED CHILDREN AND TEENS WHO HAVE LOST ONE OR BOTH PARENTS TO DEATHS, SEPARATION, OR PLACEMENT IN FOSTER CARE, KINSHIP CARE, OR ADOPTION. THESE ARE CHILDREN WHO HAVE BEEN ABUSED, NEGLECTED, OR EXPOSED TO VIOLENCE. A DROP-IN CENTER FOR TRANSITIONING FOSTER YOUTH WILL PROVIDE LIFE SKILLS TRAINING AND PEER SUPPORT.

4. FEDERAL TAX ID #: _____

5. STATE TAX ID #: _____

7. AMOUNT OF STATE FUNDS REQUESTED:

FISCAL YEAR 2017: \$ 50,000

8. STATUS OF SERVICE DESCRIBED IN THIS REQUEST:

- NEW SERVICE (PRESENTLY DOES NOT EXIST)
- EXISTING SERVICE (PRESENTLY IN OPERATION)

SPECIFY THE AMOUNT BY SOURCES OF FUNDS AVAILABLE AT THE TIME OF THIS REQUEST:

STATE \$15,000

FEDERAL \$ _____

COUNTY \$ _____

PRIVATE/OTHER \$60,000

LORRAINE GERSHUN, PRESIDENT
NAME & TITLE

1/21/16
DATE SIGNED



Grant-In-Aid Application

I. BACKGROUND AND SUMMARY

Application for Grants

If any item is not applicable to the request, the applicant should enter "not applicable".

1. A brief description of the applicant's background.

Kids Hurt Too Hawaii (KHTH), established in 2001, is a unique program on Oahu providing therapeutic services to children and youth traumatized by abuse, neglect, domestic violence, or death. The mission is to improve their lives and build the capacity for successful futures by bringing together grieving and traumatized children, teens, and parents in safe and healing ways that reflect traditional Hawaiian values. The program has several components: peer groups, mentoring programs, education for working with children's grief and trauma, crisis intervention after a violent death, and suicide intervention for children and teens.

The need for the program is great and our numbers are growing. Over 3000 children have received services to date. In 2015 alone, we provided direct services to a total of 849 children teens and young adults, all at no cost. We are a community based program with strong support from one hundred and eighty-eight (188) volunteers. However our capacity is limited. We always have a waiting list, which is unacceptable for children who have suffered the loss of a parent. From our current capacity of 150 children monthly, we would like to serve 500 children and youth per month as that is closer to the real need.

2. The goals and objectives related to the request.

Children and youth in Hawaii have limited therapeutic services that help them cope with and overcome a broad spectrum of problems associated with parent loss and trauma. Moreover, children do best in a group setting. KHTH is the only program that provides this type of program. The goals associated with this grant are to:

1. Expand and be able to accommodate an increasing number of children and families.
2. Provide therapeutic peer groups and mentoring programs for families with grieving and traumatized children, teens, and former foster youth.
3. Return the foster youth project, the Hawaii Foster Youth Coalition, to its former capacity and provide programs for more foster children in the Child Welfare System.

The programs objectives are:

- a) Cultivate a safe, structured, supportive peer group environment. The focus is on increasing empathy and social skills for getting along with others while participating in a group or community setting.

- b) Facilitate the identification, expression, and mastery of feelings related to abuse, neglect, and parent loss from placement in foster, kinship, and adoption care, separation, divorce, domestic violence, incarceration, and death.
- c) Provide information, access to resources, and positive role models for vulnerable families.
- d) Promote youth leadership, participation, and competency.
- e) Build open communication and constructive relationships with community and family.
- f) Provide career counseling and mentoring for older teens and young adults through the "You Are in Charge" mentoring program.
- g) Provide access to information re: scholarships, job training, career, and mental and physical health care.
- h) Provide a "Real World" experience to expose youth to budgeting and money management and challenges such as finding a job, housing, etc.

3. The public purpose and need to be served.

We are both a prevention and intervention program. We intervene to improve children's lives and functioning as well as to prevent a life of crises and failure. For example, one third of transitioned foster youth become homeless within three years of leaving care. A study on the health needs of Hawaii's foster youth found there was a need for mental health care and resources to encourage a sense of well-being. Yet, DHS reports in 2014 that of the more than 2000 children in foster care annually and many more who have aged out of the system, only 16% receive needed treatment.

Traumatized and grieving children tend to be disengaged from social activities, suffer from undiagnosed PTSD, function poorly in school and are disconnected from their communities. Studies show that foster children have three times more post-traumatic stress disorder (PTSD) than war veterans. When children are orphaned, or live in foster care or kinship care, or are separated from a parent, they often experience major and sometimes devastating life changes. Many foster youth age out of the system with no one to support them as they become independent adults. Grief and trauma increases the risk for sexual involvement, violence, substance abuse, and/or criminal activity. This population of youth is overrepresented in the criminal justice system, foster care, and low income single parent families.

In 2013, Hawaii statistics identified 5,892 single parent households and 2,961 domestic abuse protective orders. A survey found over 5000 children had an incarcerated parent. In 2013, there were 4055 reports of child abuse and neglect (Center on the Family, UHM). One out of 15 children will have a parent die by the age of eighteen. One third of children who have a parent die and more than half of children impacted by divorce will develop a mental or behavior health problem within two years after the loss. These children rarely receive services until they develop major problems.

The needs are staggering as shown by the increasing numbers of children and youth requesting to participate in our program. The Kids Hurt Too Hawaii program model was

designed for the specific needs of grieving and traumatized children. We are the only program on Oahu offering this combination of services. It is provided free of charge and has proven to have positive outcomes, reaching more children than traditional approaches and utilizing the youth themselves as an important resource. Young people can help each other because they understand and will listen to each other, especially when they share a similar experience.

4. Describe the target population to be served.

The target population is children in low income, single and widowed parent families, children in foster, kinship, or adoptive families, and young adults who have aged out of the foster care system. They range in age from 3 to 24. Services include parents and caregivers.

5. Describe the geographic coverage.

Kids Hurt Too Hawaii provides services primarily on the island of Oahu. Training in how to work with grief and trauma is available statewide and internationally. We also engage foster youth on the outer islands through social media and provide transportation to Oahu to participate in activities.

II. SERVICE SUMMARY AND OUTCOMES

1. Describe the scope of work, tasks and responsibilities:

We have two main program components. The first is therapeutic peer group meetings for young children, school aged children, teenagers and their care givers. They are held in the evenings and operate concurrently. The children and teens not only choose participation, they also choose how long they want to participate. The average length of participation at this time is 24 months with a range from one month to eight years. Parents or legal guardians are required to stay on the premises and most participate in a facilitated support group offered for them at the same time as the children's in a separate area.

The second component are weekend mentoring activity groups. Children enrolled in a therapeutic peer group may also attend mentoring programs that serve other children as well.

Weekly mentoring program activities include but are not limited to:

- Poi for the Soul, teaching children about taking care of taro as well as taking care of each other;
- Surf for the Soul, teaching children how to surf, water safety, and to never give up when things get tough;
- Seeds of Love, teaching children how to cultivate plants, engage in nature for healing, and how to take care of the aina;
- Community and Cultural Engagement that also includes ukulele lessons, participation in activities provided by other organizations, clubs, and initiatives, and arts and crafts classes. Some of these activities are offered at the request of the children themselves.
- "You Are in Charge" is a unique program that is provided by a community businessman who volunteers his time for an 8-week training and job skills program twice a year. It is available to youth ages 17-23 teaching them how to set and achieve goals related to education and career success. He has opened the doors to significant opportunities for several of the young participants.
- The Real World event is an annual independent living skills training for youth 15-21.

The Hawaii Foster Youth Coalition (HFYC), a project of Kids Hurt Too Hawaii, is staffed by a former foster youth who schedules weekly peer support meetings, quarterly leadership and community service activities, and mentoring programs for setting career and college goals. HFYC is a youth-led project with a mission to provide a youth voice within the community and state to advocate for and support current and former displaced youth ages 14-24. Unlike other efforts which have not succeeded, HFYC successfully provides a youth drop-in center, opened in 2009 at the Harry and Jeanette Weinberg Kukui Center. It is for foster and other at risk youth where they seek crisis intervention, use a computer lab for ongoing college preparation, scholarships, to learn about job training opportunities and other related activities, engage in training workshops, mentoring sessions, and find opportunities to become mentors to children in foster care. HFYC has a youth led advisory board whose plan is captured by the phrase "transforming your story to inspire others."

HFYC staff and youth are supervised by professional staff assisting them in coordinating and leading planning meetings for the annual independent living skills training for at risk youth called The Real World and other youth-led initiatives. HFYC has built significant community partnerships and support. The Real World, the only event of its kind offered to at risk youth, simulates the real world for 50-60 youth and is conducted in collaboration with businesses and other organizations. It is an all-day training at which youth learn skills for budgeting, managing credit and banking, job interviewing, and finding housing. They also engage with career mentors with whom they are matched after they complete a career assessment and choose a career that matches their interests. If funding allows, HFYC has held an After Party for attendees at the Real World Event. The After Party trains youth in leadership and team building skills and offers a fun way for them to strengthen their connection to a positive peer group.

A recent new initiative, HFYC developed a training called “Your Life, YOUth Matter: Healing Trauma to Prevent Self Harm.” They presented it for the first time in October 2015 at the National Foster Youth in Action (FYA) Conference in Washington D.C., reinforcing a national focus on the issue. They will offer the training locally to youth, foster parents, social workers, and others interested in a youth perspective on the trauma care needs of foster children. HFYC youth participate on the council for youth suicide prevention in Hawaii. HFYC is a member of FYA that engages them in ongoing leadership training and advocacy work at the national level. Funding for HFYC will end December of 2016. This grant will be used to help maintain this highly successful mentoring project as well as continue to support the presence of a Foster Youth Drop-In Center.

2. Provide a projected annual timeline for accomplishing the results or outcomes of the service.

These programs are currently operational but require sufficient financial support to continue and expand services. They will continue to operate weekly, the Youth Drop-In Center daily. Groups are held in the evenings to accommodate parents and mentoring activities are held on weekends when children are free to participate.

Program Time Line

| Mon | Project Goal | Related Objective | Activity | TITLE OF RESPONSIBLE STAFF | Expected Completion Date |
|--------------------------|--|--|---|--|---------------------------------|
| 1-12 | Ongoing bi-monthly and monthly therapeutic peer groups meet | Evaluations, feedback by current participants and surveys for all families | *Assign volunteers to each program; *call families to remind them about meeting date *Intake new families | Program Director Interns | Ongoing |
| 1 and 8 | Train new volunteer facilitators and mentors | Continue bi-monthly and monthly groups | *Set training dates *Accept training registrations *Email confirmations *Conduct four day training | Exec. Director Program Director | Month 2 and 9 |
| 2, 3, 4, 6, 7, 9, 10, 11 | Increase volunteer facilitators and mentors participation | Engage volunteers in bi-monthly and monthly therapeutic peer groups and weekly mentoring activity programs | *Weekly contact with volunteers for peer groups and as needed contact with other activities *Meet, screen, and place peer group facilitators/mentors | Exec. Director Program Director | Month 3, 6, 9, and 12 |
| 1, 2, 3, 4, 5 | Hold Real World Event | Invite and expand collaborators and donors. Conduct regular planning meetings start in January then meet monthly until April then meet weekly. | *Announce date and send out fliers *Accept registrations *Confirm participation *Schedule flights and transportation for neighbor Island youth *Print materials | Project Coordinator Interns | Month 5 |
| 1-12 | Engage children and youth in weekly mentoring activities program | Plan and implement weekly therapeutic mentoring activities | *Schedule activities *Create sign-up sheets and fliers *Call to remind families about meetings and activities *Engage community partners | Program Director Interns Project Coordinator | Ongoing |
| 2-3 and 10-11 | Engage youth ages 16-24 in training weekly | You Are in Charge Scholarship Day Financial Literacy Leadership Training | *Schedule meetings *Market to youth *Accept registrations *Conduct sessions | Project Coordinator Interns Volunteers | Ongoing |

3. Describe its quality assurance and evaluation plans for the request. Specify how the applicant plans to monitor, evaluate, and improve their results; and list the measure(s) of effectiveness that will be reported to the State agency through which grant funds are appropriated (the expending agency). The measure(s) will provide a standard and objective way for the State to assess the program's achievement or accomplishment. Please note that if the level of appropriation differs from the amount included in this application that the measure(s) of effectiveness will need to be updated and transmitted to the expending agency.

Kids Hurt Too Hawaii will serve 150 children per month in bi-monthly and monthly peer groups and weekly mentoring programs. The Youth Drop-In Center will engage 40 youth per month in mentoring activities. KHT conducts annual evaluations and surveys on services with parent participants and youth to obtain information on how they are doing in the program and if changes are needed to better meet their needs. Feedback from annual evaluations included comments from parents who said that their children make sure the parents remember group night, look forward to coming, and are disappointed when groups don't meet on holidays. Children also responded by saying they wanted to come more often. This is very unusual because children are notoriously difficult to engage in therapeutic activities.

Evaluations of youth in mentoring programs will measure 1) increases in emotional stability (e.g. less crying and less resistance to attending school as reported by parents), 2) getting along better with others (e.g. less in home conflicts), 3) increases in physical and social activities (e.g. less isolation and less time spent playing electronic games), and 4) decreases in bullying behavior and increases in feeling and behaving safely.

Evaluation Tools include:

- A suggestion box for children, teens, and parents: participants are encouraged at each activity to make suggestions for activities they would like to have in the future.
- Pre and post assessments of protective factors: upon entering the program and no sooner than six months later.
- Self-rating scales: upon entering the program and annually.
- Evaluations of services: annually and upon completion of the program.
- Self-evaluations of learning: after each training or activity.
- Hours of participation: rosters are created for each activity and peer group.
- Level of participation (i.e. how many activities): rosters and reports are created for each activity. Hours of participation are tracked for each child.
- The Youth Drop-In Center will maintain a sign-in log for each day open.

III. FINANCIAL

Budget

1. The applicant shall submit a budget utilizing the enclosed budget forms as applicable, to detail the cost of the request.

BUDGET REQUEST BY SOURCE OF FUNDS

Period: July 1, 2016 to June 30, 2017

Applicant: Kids Hurt Too Hawaii

| BUDGET CATEGORIES | Total State Funds Requested (a) | Total Federal Funds Requested (b) | Total County Funds Requested (c) | Total Private/Other Funds Requested (d) |
|---|---------------------------------|--|----------------------------------|---|
| A. PERSONNEL COST | | | | |
| 1. Salaries | 37,860 | | | 80,400 |
| 2. Payroll Taxes & Assessments | 0 | | | 11,826 |
| 3. Fringe Benefits | 0 | | | 18,632 |
| TOTAL PERSONNEL COST | 37,860 | | | 110,858 |
| B. OTHER CURRENT EXPENSES | | | | |
| 1. Airfare, Inter-Island | | | | 400 |
| 2. Insurance | 1,140 | | | 6,161 |
| 3. Lease/Rental of Equipment | | | | |
| 4. Lease/Rental of Space | 11,000 | | | 38,914 |
| 5. Staff Training | | | | |
| 6. Supplies | | | | 3,050 |
| 7. Telecommunication | | | | 2,000 |
| 8. Postage | | | | 1,050 |
| 9. Printing | | | | 1,000 |
| 10. Mileage, Parking | | | | 870 |
| 11. Food | | | | 2,150 |
| 12. Equip Purchase & Maintenance | | | | 1,000 |
| 13. Contracts: CPA, Bookkeeper, FWS | | | | 5,800 |
| 14. Other | | | | 1,096 |
| 15. Advertising | | | | 1,200 |
| 16. Fundraising Expenses | | | | 5,000 |
| 17 | | | | |
| 18 | | | | |
| 19 | | | | |
| 20 | | | | |
| TOTAL OTHER CURRENT EXPENSES | 12,140 | | | 69,691 |
| C. EQUIPMENT PURCHASES | | | | |
| D. MOTOR VEHICLE PURCHASES | | | | |
| E. CAPITAL | | | | |
| TOTAL (A+B+C+D+E) | 50,000 | | | 180,549 |
| SOURCES OF FUNDING | | Budget Prepared By: | | |
| (a) Total State Funds Requested | 50,000 | Cynthia White 808-256-3176 | | |
| (b) Total Federal Funds Requested | 0 | Phone | | |
| (c) Total County Funds Requested | 0 | 1/21/16 | | |
| (d) Total Private/Other Funds Requested | 180,549 | Date | | |
| TOTAL BUDGET | 230,549 | Signature of Authorized Official Lorraine Gershun, President Name and Title (Please type or print) | | |

BUDGET JUSTIFICATION - PERSONNEL SALARIES AND WAGES

Period: July 1, 2016 to June 30, 2017

Applicant: Kids Hurt Too Hawaii

| POSITION TITLE | FULL TIME EQUIVALENT | ANNUAL SALARY A | % OF TIME ALLOCATED TO GRANT REQUEST B | TOTAL STATE FUNDS REQUESTED (A x B) |
|--------------------------------|----------------------|--------------------|---|--|
| Executive Director | FULL TIME | \$60,000.00 | 30.00% | \$ 18,000.00 |
| Program Director | FULL TIME | \$48,000.00 | 20.00% | \$ 9,600.00 |
| Project Coordinator | PART TIME | \$13,680.00 | 75.00% | \$ 10,260.00 |
| | | | | \$ - |
| | | | | \$ - |
| | | | | \$ - |
| | | | | \$ - |
| | | | | \$ - |
| | | | | \$ - |
| | | | | \$ - |
| | | | | \$ - |
| | | | | \$ - |
| | | | | \$ - |
| | | | | \$ - |
| | | | | \$ - |
| TOTAL: | | | | 37,860.00 |
| JUSTIFICATION/COMMENTS: | | | | |

BUDGET JUSTIFICATION - EQUIPMENT AND MOTOR VEHICLES

Period: July 1, 2016 to June 30, 2017

Applicant: Kids Hurt Too Hawaii

| DESCRIPTION EQUIPMENT | NO. OF ITEMS | COST PER ITEM | TOTAL COST | TOTAL BUDGETED |
|--------------------------------|-----------------|------------------|---------------|-------------------|
| Not applicable | | | \$ - | |
| | | | \$ - | |
| | | | \$ - | |
| | | | \$ - | |
| | | | \$ - | |
| TOTAL: | | | \$ - | |
| JUSTIFICATION/COMMENTS: | | | | |

| DESCRIPTION OF MOTOR VEHICLE | NO. OF VEHICLES | COST PER VEHICLE | TOTAL COST | TOTAL BUDGETED |
|---------------------------------|--------------------|---------------------|---------------|-------------------|
| | | | \$ - | |
| | | | \$ - | |
| | | | \$ - | |
| | | | \$ - | |
| | | | \$ - | |
| TOTAL: | | | \$ - | |
| JUSTIFICATION/COMMENTS: | | | | |

BUDGET JUSTIFICATION - CAPITAL PROJECT DETAILS

Period: July 1, 2016 to June 30, 2017

Applicant: Kids Hurt Too Hawaii

| FUNDING AMOUNT REQUESTED | | | | | | |
|--------------------------------------|---|---------------|--------------------------|-------------------------------------|---|--------------|
| TOTAL PROJECT COST Not Applicable | ALL SOURCES OF FUNDS RECEIVED IN PRIOR YEARS | | STATE FUNDS REQUESTED | OTHER SOURCES OF FUNDS REQUESTED | FUNDING REQUIRED IN SUCCEEDING YEARS | |
| | FY: 2014-2015 | FY: 2015-2016 | FY:2016-2017 | FY:2016-2017 | FY:2017-2018 | FY:2018-2019 |
| PLANS | | | | | | |
| LAND ACQUISITION | | | | | | |
| DESIGN | | | | | | |
| CONSTRUCTION | | | | | | |
| EQUIPMENT | | | | | | |
| TOTAL: | | | | | | |
| JUSTIFICATION/COMMENTS: | | | | | | |

GOVERNMENT CONTRACTS AND / OR GRANTS

Applicant: Kids Hurt Too Hawaii

Contracts Total: 30,000

| | CONTRACT DESCRIPTION | EFFECTIVE DATES | AGENCY | GOVERNMENT ENTITY (U.S. / State / Haw / Hon / Kau / Mau) | CONTRACT VALUE |
|----|-----------------------------|------------------------|--------------------------|--|-----------------------|
| 1 | Peer Support and Mentoring | 7/1/2015-6/30/16 | Office of Youth Services | State | 30,000 |
| 2 | | | | | |
| 3 | | | | | |
| 4 | | | | | |
| 5 | | | | | |
| 6 | | | | | |
| 7 | | | | | |
| 8 | | | | | |
| 9 | | | | | |
| 10 | | | | | |
| 11 | | | | | |
| 12 | | | | | |
| 13 | | | | | |
| 14 | | | | | |
| 15 | | | | | |
| 16 | | | | | |
| 17 | | | | | |
| 18 | | | | | |
| 19 | | | | | |
| 20 | | | | | |
| 21 | | | | | |
| 22 | | | | | |
| 23 | | | | | |
| 24 | | | | | |
| 25 | | | | | |
| 26 | | | | | |

2. The applicant shall provide its anticipated quarterly funding requests for the fiscal year 2017.

| Quarter 1 | Quarter 2 | Quarter 3 | Quarter 4 | Total Grant |
|-----------|-----------|-----------|-----------|-------------|
| \$12,500 | \$12,500 | \$12,500 | \$12,500 | \$50,000 |

3. The applicant shall provide a listing of all other sources of funding that they are seeking for fiscal year 2017.

GIA APPLICATION 2015

| Kids Hurt Too Hawaii Funding Sources for Fiscal Year 7/1/2016-6/30/2017 | | | | | | | |
|---|--------------------------------|------------------|----------------|---------|--------------------------|--------------|-------------|
| Submission Date | Funder/Grant | Amount Requested | Amount Awarded | Status | Program/Project | Award Date | Fiscal Year |
| Ongoing | Individual/Business Donations | \$65,000 | \$25,000 | | All programs | Ongoing | 2017 |
| 12/5/2015 | Na Lei Aloha | \$25,000 | \$25,000 | Awarded | Mentoring Project - HFYC | 1/1/2016 | 2017 |
| 4/20/2016 | Visitors Industry Charity Walk | \$5,000 | | Pending | Peer Support & Mentoring | 8/30/2016 | 2017 |
| 7/15/2015 | New York Life: Grief Reach | \$10,000 | \$10,000 | Awarded | Strategic Planning | 11/30/2015 | 2016 |
| 6/15/2016 | Office of Youth Services | \$30,000 | | Pending | Peer Support & Mentoring | 7/1/2016 | 2017 |
| 6/30/2015 | Office of Youth Services | \$15,000 | \$15,000 | Awarded | Peer Support & Mentoring | Thru 6/30/16 | 2016 |
| Ongoing | Training Fees | \$20,000 | | | Peer Support & Mentoring | Ongoing | 2017 |
| 10/17/2016 | Aloha United Way | \$1,200 | | | Peer Support & Mentoring | Ongoing | 2017 |
| 3/1/2016 | Combined Federal Campaign | unknown | | | Peer Support & Mentoring | Ongoing | 2017 |
| 6/1/2016 | Bill Healy Foundation | \$8,000 | | Pending | Peer Support & Mentoring | 10/1/2016 | 2017 |
| 5/8/2016 | Beauty for Benefit Event | \$5,000 | | | Unrestricted | 5/8/2016 | 2016 |
| 1/30/2016 | Friends of Hawaii Charities | \$5,000 | | Pending | Peer Support & Mentoring | 5/1/2016 | 2017 |
| 10/2/2016 | Hawaii Women's Legal Fnd | \$5,000 | | Pending | Mentoring Project - HFYC | 12/1/2016 | 2017 |
| 9/30/2016 | Gala | \$50,000 | | | Unrestricted | 9/1/2016 | 2017 |
| | Subtotal | \$244,200 | \$75,000 | | | | |

4. The applicant shall provide a listing of all state and federal tax credits it has been granted within the prior three years. Additionally, the applicant shall provide a listing of all state and federal tax credits they have applied for or anticipate applying for pertaining to any capital project, if applicable.

The last credit received was a health care credit of \$255 in 2012. No other credits have been or will be applied for.

5. The applicant shall provide a listing of all federal, state, and county government contracts and grants it has been and will be receiving for program funding.

Kids Hurt Too Hawaii peer support and mentoring services has been and will be receiving funding under a contract with the Office of Youth Services from 10/1/2010 to 6/30/2016 with the potential for continued annual renewal. The contact person is Merton Chinen who can be reached at 587-5700.

It should be noted that historically HFYC received funding from the Department of Human Services, Child Welfare Services, and Independent Living Programs from 2001-2013. Awards started at \$30,000 and increased to \$157,360 per year as we expanded the number of youth served and the services we provided. Very unfortunately, our proposal to DHS for 2014 was not accepted because of a technicality (the hard copy of the grant was mailed by the deadline but the electronic version, which was mailed with the hard copy, was deemed not to have been received on time because it had a different deadline). This excluded the proposal from being considered, resulting in a cut back of services. With full funding of this GIA request, we can begin to build back services that were cut. It has been a struggle without DHS funding. But we were able to raise funds so some services could continue.

6. The applicant shall provide the balance of its unrestricted current assets as of December 31, 2015.

Kids Hurt Too Hawaii
Balance Sheet
As of January 1, 2016

| | <u>Jan 1, 16</u> |
|--|-------------------------|
| ASSETS | |
| Current Assets | |
| Checking/Savings | |
| 10050 · Petty Cash | 500.00 |
| 10100 · First Hawaiian Bank | <u>38,907.67</u> |
| Total Checking/Savings | <u>39,407.67</u> |
| Accounts Receivable | |
| 11000 · Accounts Receivable | <u>2,260.96</u> |
| Total Accounts Receivable | <u>2,260.96</u> |
| Total Current Assets | 41,668.63 |
| Other Assets | |
| 14500 · Refundable Deposit | <u>3,396.69</u> |
| Total Other Assets | <u>3,396.69</u> |
| TOTAL ASSETS | <u><u>45,065.32</u></u> |
| LIABILITIES & EQUITY | |
| Liabilities | |
| Current Liabilities | |
| Accounts Payable | |
| 20000 · Accounts Payable | <u>800.04</u> |
| Total Accounts Payable | 800.04 |
| Other Current Liabilities | |
| 24000 · Payroll Liabilities | |
| 24010 · FICA Payable | 524.78 |
| 24015 · FWT Payable | 285.00 |
| 24050 · SWT Payable | 818.98 |
| 24060 · SUI Payable | <u>398.47</u> |
| Total 24000 · Payroll Liabilities | <u>2,027.23</u> |
| Total Other Current Liabilities | <u>2,027.23</u> |
| Total Current Liabilities | <u>2,827.27</u> |
| Total Liabilities | 2,827.27 |
| Equity | |
| 32000 · Unrestricted Net Assets | <u>42,238.05</u> |
| Total Equity | <u>42,238.05</u> |
| TOTAL LIABILITIES & EQUITY | <u><u>45,065.32</u></u> |

IV. EXPERIENCE AND CAPABILITY

A. Necessary Skills and Experience

KHTH has provided services since 2001. Prior to 2009, it used various borrowed locations after moving into the Kukui Center, Kids Hurt Too Hawaii increased capacity from 60 children a month to 150 per month in 2015.

Kids Hurt Too Hawaii has operated peer group and mentoring services for the past fifteen years. Peer support programs use The Dougy Center: The National Center for Grieving Children and Families model that is replicated by over 1500 programs nationally and internationally. Programs are administered by Cynthia White, M.ED., who has thirty three years of experience in group work with grieving and traumatized children. Cynthia has worked as a trainer for twenty two years, conducting National and International workshops. Our specialized training for mentors plays an important role in the quality of programs. Services have consistently demonstrated the positive impact of connecting families and communities.

Hiro Ito, MSW is the Program Director and has over twenty years of experience working with our target population.

The Hawaii Foster Youth Coalition (HFYC) joined Kids Hurt Too Hawaii as a mentoring project in 2009. HFYC has a successful track record of engaging foster youth as peer mentors for other foster youth, community service projects, collaborations, and leadership. Cynthia White has been the Director of HFYC since 2004, supporting the youth-led initiative through strategic planning, governance and program implementation.

The Real World Event, an annual independent living skills training for youth ages 16-21 has been provided for the past five years with nearly 100 volunteer mentors and numerous collaborators that include but are not limited to, Hale Kipa, Rotary Clubs, Susannah Wesley Community Center, New York Life, Bank of Hawaii, Hawaii USA Federal Credit Union, five Universities that provide interns, and local business people. The level of collaboration grows each year.

B. Facilities

Kids Hurt Too Hawaii is co-located at the Harry & Jeanette Weinberg Kukui Center with nine other social service programs that provide resources to our clients. These include services for housing, education, literacy, legal services and mediation. Kids Hurt Too Hawaii leases space in two areas:

- 1,818 square feet for the Kids Hurt Too program with rooms for program services and staff offices that include:
 - Two rooms for offices for staff
 - Five rooms are for concurrent children's peer groups and mentoring activities including a talking room, two play rooms, a volcano room, and a large arts and crafts room.
 - One room for separate care taker group meetings.

- 1,012 square feet that is a large conference style room that can be divided into three rooms. It is utilized for concurrent teen peer groups, an HFYC office and youth drop-in center, training, and mentoring activities.
- The handicap accessible building has handicapped accessible public restrooms on the first floor and an elevator.
- There is an outdoor sitting area and playground.
- The Kukui Center has ample parking for clients.
- The Kukui Center is open 7 days a week and in the evenings.

V. PERSONNEL: PROJECT
ORGANIZATION AND STAFFING

A. Proposed Staffing, Staff Qualifications, Supervision and Training

Personnel

KHT has a small staff which is supported by a very skilled and active board or directors. They meet regularly to ensure fiscal and legal compliance, plan, and assists with public relations campaigns and fund development. The Executive Director is responsible for hiring, supervising, and evaluating staff, administration, collaboration, and training. The Program Director is responsible for development of, coordination of, and supervision of peer groups and mentoring activities. Because of the extensive use of students and volunteers, there are targeted internship and volunteer policy manuals. The personnel manual contains all of the policies and procedures of the organization and applies equally to staff, volunteers and interns to provide consistent best practices in this area.

Communication is key when dealing with vulnerable children. The staff and interns meet weekly to ensure the positive flow of communication, operational cohesion, and quality delivery of services. All staff are required to be engaged with mentoring children and youth, including administrative staff. All staff receive facilitation and mentor training as well, which aids them in staying connected to the organization's mission and in providing a positive healing environment to all children and youth that utilize services and resources.

1. Proposed Staffing and Qualifications

Kids Hurt Too Hawaii currently has an Executive Director (ED), a Program Director (PD), one part-time Project Coordinator, and one part-time student Program Assistant under Federal Work Study. Volunteer staff members are interns who include two bachelor and one master level social work students, one master level counseling student, and one master level marriage and family therapy student. Interns assist with coordination of services and work directly with clients under the supervision of the Executive and Program Directors.

The Executive Director, Cynthia White has a master's degree in education with an emphasis on counseling education from the University of Western Kentucky and over thirty years of experience doing group work and counseling with grieving and traumatized children, teens, and adults. She is internationally recognized as an expert working with this population and provides training in the program model as well as personnel, volunteer, and internship policies.

The Program Director, Masahiro Ito, has a master's degree in social work from the University of Hawaii at Manoa and over twenty years of experience in this program model and with disabled, traumatized, grieving, and at-risk children and youth. The Program Director is required to have a Master's degree in a human services field and three years' experience to carry out the clinical, supervisory and direct service components of the program. The Program Director (PD) and master level interns conduct intakes for all program participants. They coordinate, supervise, and provide case management for all children's peer support groups and mentoring activities.

The Project Coordinator (PC) facilitates peer mentoring groups by directly engaging youth, ages 16-24, in or from the child welfare system on Oahu. Foster youth alumni throughout the state of Hawaii are actively engaged through social media. The Project Coordinator is required to have a high school diploma and knowledge of the foster care system in Hawaii. The current PC is a foster care alumni, has been a youth leader with HFYC for six years, and is a college student studying at UH in the School of Social Work. She was also selected as the first former foster youth in the country for a congressional internship in the office of Senator Brian Schatz where she testified before congress on the needs of foster children.

The volunteer component is jointly administered by the Executive Director and Program Director. They share responsibility for recruiting, training, screening, placing, and supervising volunteers. Volunteers are used in two ways. The first are trained to work with the therapeutic peer groups. In 2015, 55 volunteers gave their time to work directly with peer groups. An additional 133 volunteered to help with mentoring on a monthly basis. They provided activities such as:

- Music Therapy (Sounding Joy)
- Surfing mentors (Surfrider Spirit Sessions)
- Tutors (various collaborators)
- Financial Literacy Skills (Hawaii USA Federal Credit Union and Epic Ohana)
- Cultural Educators (Queen Lili'uokalani Children's Center and UHM)

B. Project Organization

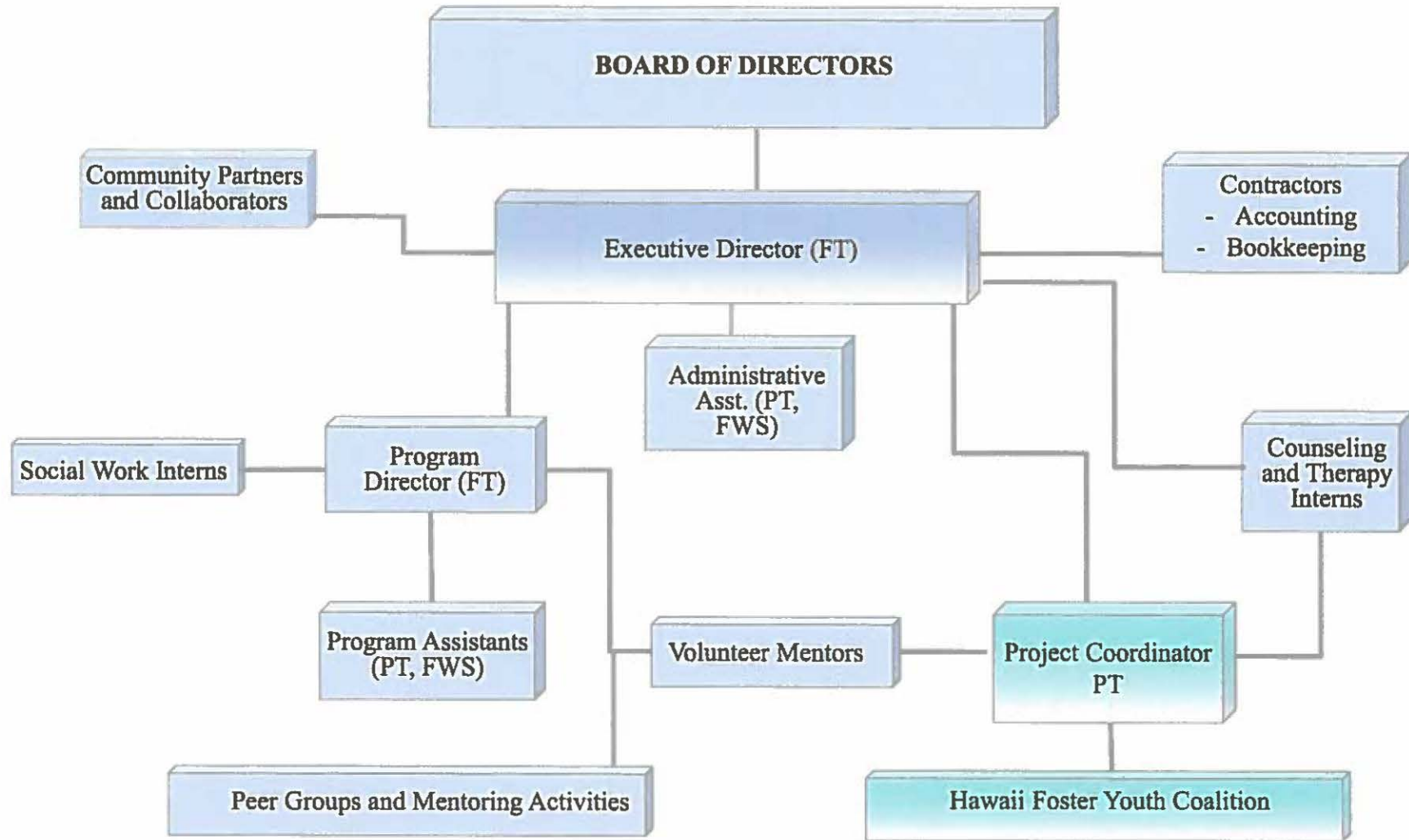
2. Supervision and Training

Executive Director, Cynthia White, M.Ed., has provided training in the peer support program model throughout the United States and in Japan. She has trained over 9500 people in Hawaii on understanding how to help children and teens with trauma, grief, and in doing group work. Ms. White trains volunteer mentors, interns, and professionals in Hawaii and from abroad. The volunteer mentor and intern training is four days, totaling 28 hours. It includes theories on children's trauma and grief, personal development work, theoretical framework of facilitation and group work skills as well as practice exercises. The training includes PowerPoint presentations, videos, and skills practice. Trainees receive handouts and a Grief Education for Children and Ohana booklet that define the theories and skills required for working as a children's grief and trauma facilitator at Kids Hurt Too Hawaii. Ms. White supervises counseling interns and assists with supervising program activities when needed. The Program Director, Masahiro Ito, MSW, supervises all program activities, social work interns, volunteers, and program assistants. He also assists with training and provides translation for Japanese professionals.

B. Organization Chart

The applicant shall illustrate the position of each staff and line of responsibility/supervision. If the request is part of a large, multi-purpose organization, include an organization chart that illustrates the placement of this request.

KIDS HURT TOO HAWAII Organization Chart



C. Compensation

The applicant shall provide the annual salaries paid by the applicant to the three highest paid officers, directors, or employees of the organization by position.

BUDGET JUSTIFICATION - PERSONNEL SALARIES AND WAGES

Period: July 1, 2016 to June 30, 2017

Applicant: Kids Hurt Too Hawaii

| POSITION TITLE | FULL TIME EQUIVALENT | ANNUAL SALARY A | % OF TIME ALLOCATED TO GRANT REQUEST B | TOTAL STATE FUNDS REQUESTED (A x B) |
|--------------------------------|----------------------|--------------------|---|--|
| Executive Director | FULL TIME | \$60,000.00 | 30.00% | \$ 18,000.00 |
| Program Director | FULL TIME | \$48,000.00 | 20.00% | \$ 9,600.00 |
| Project Coordinator | PART TIME | \$13,680.00 | 75.00% | \$ 10,260.00 |
| | | | | \$ - |
| | | | | \$ - |
| | | | | \$ - |
| | | | | \$ - |
| | | | | \$ - |
| | | | | \$ - |
| | | | | \$ - |
| | | | | \$ - |
| | | | | \$ - |
| | | | | \$ - |
| | | | | \$ - |
| | | | | \$ - |
| TOTAL: | | | | 37,860.00 |
| JUSTIFICATION/COMMENTS: | | | | |

VI. OTHER

A. Litigation

The applicant shall disclose any pending litigation to which they are a party, including the disclosure of any outstanding judgement. If applicable, please explain.

Kids Hurt Too Hawaii has neither pending litigation to which we are a party nor any outstanding judgments.

B. Licensure or Accreditation

Kids Hurt Too Hawaii is one of 1500 programs around the world using The Dougy Center: The National Center for Grieving Children and Families group program model. Membership is achieved through being trained by the National Center of which Cynthia White was the Training Director for seven years.

The Hawaii Foster Youth Coalition is a member of Foster Youth in Action, a national coalition of organizations for foster youth leadership and advocacy.

C. Private Educational Institutions

The applicant shall specify whether the grant will be used to support or benefit a sectarian or non-sectarian private educational institution. Please see Article X, Section 1, of the State Constitution for the relevance of this question.

The grant will not be used to support or benefit a sectarian or non-sectarian private educational institution.

D. Future Sustainability Plan

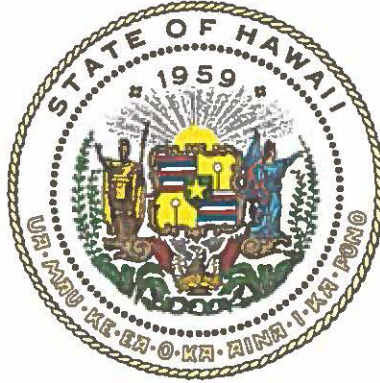
The applicant shall provide a plan for sustaining after fiscal year 2016-17 the activity funded by the grant if the grant of this application is:

- (1) Received by the applicant for fiscal year 2016-17, but
- (2) Not received by the applicant thereafter.

Kids Hurt Too Hawaii has a diverse source of funding. Grants have been the main revenue since 2009. However, initiatives to increase income from training programs have been successful over the past two years. It is expected that training income will continue to be a sustainable source of revenue. Additionally, individual donations have steadily increased. The board is moving forward on building individual and corporate donors through planned giving. Events were a strong revenue source in previous years so the board has elected to plan one major fundraiser per year. All services have been provided free of charge. If needed, a small monthly fee may be initiated.

E. Certificate of Good Standing (If the Applicant is an Organization)

If the applicant is an organization, the applicant shall submit one (1) copy of a certificate of good standing from the Director of Commerce and Consumer Affairs that is dated no earlier than December 1, 2015.



Department of Commerce and Consumer Affairs

CERTIFICATE OF GOOD STANDING

I, the undersigned Director of Commerce and Consumer Affairs of the State of Hawaii, do hereby certify that

KIDS HURT TOO HAWAII

was incorporated under the laws of Hawaii on 02/15/2001 ; that it is an existing nonprofit corporation; and that, as far as the records of this Department reveal, has complied with all of the provisions of the Hawaii Nonprofit Corporations Act, regulating domestic nonprofit corporations.

IN WITNESS WHEREOF, I have hereunto set my hand and affixed the seal of the Department of Commerce and Consumer Affairs, at Honolulu, Hawaii.

Dated: January 21, 2016



Director of Commerce and Consumer Affairs



**DECLARATION STATEMENT OF
APPLICANTS FOR GRANTS PURSUANT TO
CHAPTER 42F, HAWAII REVISIED STATUTES**

The undersigned authorized representative of the applicant certifies the following:

- 1) The applicant meets and will comply with all of the following standards for the award of grants pursuant to Section 42F-103, Hawaii Revised Statutes:
 - a) Is licensed or accredited, in accordance with federal, state, or county statutes, rules, or ordinances, to conduct the activities or provide the services for which a grant is awarded;
 - b) Complies with all applicable federal and state laws prohibiting discrimination against any person on the basis of race, color, national origin, religion, creed, sex, age, sexual orientation, or disability;
 - c) Agrees not to use state funds for entertainment or lobbying activities; and
 - d) Allows the state agency to which funds for the grant were appropriated for expenditure, legislative committees and their staff, and the auditor full access to their records, reports, files, and other related documents and information for purposes of monitoring, measuring the effectiveness, and ensuring the proper expenditure of the grant.
- 2) If the applicant is an organization, the applicant meets the following requirements pursuant to Section 42F-103, Hawaii Revised Statutes:
 - a) Is incorporated under the laws of the State; and
 - b) Has bylaws or policies that describe the manner in which the activities or services for which a grant is awarded shall be conducted or provided.
- 3) If the applicant is a non-profit organization, it meets the following requirements pursuant to Section 42F-103, Hawaii Revised Statutes:
 - a) Is determined and designated to be a non-profit organization by the Internal Revenue Service; and
 - b) Has a governing board whose members have no material conflict of interest and serve without compensation.

Pursuant to Section 42F-103, Hawaii Revised Statutes, for grants used for the acquisition of land, when the organization discontinues the activities or services on the land acquired for which the grant was awarded and disposes of the land in fee simple or by lease, the organization shall negotiate with the expending agency for a lump sum or installment repayment to the State of the amount of the grant used for the acquisition of the land.

Further, the undersigned authorized representative certifies that this statement is true and correct to the best of the applicant's knowledge.

Kids Hurt Too Hawaii

 _____
(Signature) (Date) 1/21/16

Lorraine Gershun _____
(Typed Name) (Title) President