



Hawaii Speed and Quickness is a 501 (c) 3 and provides prevention services in the areas of substance abuse prevention, health and fitness, mentoring and educational support in communities statewide.

Senate Ways and Means  
State Capitol, Rm. 207  
Honolulu, HI 96813  
Attn: GIA

PHONE

808-228-7447

WEB

[Hawaiispeedandquickness.com](http://Hawaiispeedandquickness.com)

House District \_\_\_\_\_

Senate District \_\_\_\_\_

THE TWENTY-EIGHTH LEGISLATURE  
APPLICATION FOR GRANTS  
CHAPTER 42F, HAWAII REVISED STATUTES

Log No: \_\_\_\_\_

For Legislature's Use Only

Type of Grant Request:

GRANT REQUEST – OPERATING

GRANT REQUEST – CAPITAL

"Grant" means an award of state funds by the legislature, by an appropriation to a specified recipient, to support the activities of the recipient and permit the community to benefit from those activities.

"Recipient" means any organization or person receiving a grant.

STATE DEPARTMENT OR AGENCY RELATED TO THIS REQUEST (LEAVE BLANK IF UNKNOWN):

DEPARTMENT OF HEALTH

STATE PROGRAM I.D. NO. (LEAVE BLANK IF UNKNOWN): \_\_\_\_\_

1. APPLICANT INFORMATION:

Legal Name of Requesting Organization or Individual:  
Hawaii Speed and Quickness

Dbas:

Street Address:  
7168 Maka'a Street, Honolulu, HI 96825

Mailing Address:

Same as above

2. CONTACT PERSON FOR MATTERS INVOLVING THIS APPLICATION:

Name LORI MIANO

Title COO

Phone # 808-228-7447

Fax # NA

E-mail lorimiano38@gmail.com

3. TYPE OF BUSINESS ENTITY:

- NON PROFIT CORPORATION INCORPORATED IN HAWAII
- FOR PROFIT CORPORATION INCORPORATED IN HAWAII
- LIMITED LIABILITY COMPANY
- SOLE PROPRIETORSHIP/INDIVIDUAL
- OTHER

6. DESCRIPTIVE TITLE OF APPLICANT'S REQUEST:

HAWAII SPEED AND QUICKNESS REQUEST 130,000 TO IMPLMENT THE SPORTS TRAININGN EDUCATION AND PREVENTION PROGRAM AT KAHUKU HIGH AND INTERMEDIATE SCHOOL.

The Hawaii Speed and Quickness STEP Program (Sports Training Education and Prevention) is a comprehensive school- based program that aims to prevent alcohol, tobacco and other drug use, violence and academic failure by targeting the major social, environmental and psychological factors that promote ATOD use and risky behaviors.

4. FEDERAL TAX ID #: \_\_\_\_\_

5. STATE TAX ID #: \_\_\_\_\_

7. AMOUNT OF STATE FUNDS REQUESTED: \$130,000

FISCAL YEAR 2017: \$ 130,000

8. STATUS OF SERVICE DESCRIBED IN THIS REQUEST:

- NEW SERVICE (PRESENTLY DOES NOT EXIST)
- EXISTING SERVICE (PRESENTLY IN OPERATION)

SPECIFY THE AMOUNT BY SOURCES OF FUNDS AVAILABLE AT THE TIME OF THIS REQUEST:

STATE \$ \_\_\_\_\_  
 FEDERAL \$ \_\_\_\_\_  
 COUNTY \$ \_\_\_\_\_  
 PRIVATE/OTHER \$ \_\_\_\_\_

LORI MIANO, COO  
NAME & TITLE

1/18/2016  
DATE SIGNED



## Application for Grants

***Risk can be transformed into opportunity for our youth by turning their non-school hours into the time of their lives.***

*—A Matter of Time, Carnegie Corporation, December 1992*

### I. Background and Summary

*Hawaii Speed and Quickness envisions healthy communities. Our mission is to provide any child access to exceptional sports training, alcohol and drug prevention curriculum and mentoring to maximize personal success and healthy living in life regardless of geographic, financial, or demographic circumstance.*

#### 1. Applicant's background

Hawaii Speed and Quickness is a 501 (c) 3 organization founded in 2000 by Rich Miano. HSQ is dedicated to building healthy communities and to honor our mission and provide the best services for the communities served, HSQ executes well-informed quality assurance and evaluation procedures. HSQ has served the State of Hawaii continuously for 15 years and strives to work in partnership and operate on a complimentary learning framework and cross cutting theme that connections matter. Relationships among cultural advisors, faith based organizations, social service organizations, professionals, school administration, staff, families, youth and local businesses are crucial to the success of the students and the communities as a whole.

Hawaii Speed and Quickness Intermediate and High School programs are all designed in a complimentary framework that complements the school day and is integrated into the school community with a shared vision and goals. The programs all share common elements that include: Goal setting and strong management, quality staffing that includes certified teachers from the school, professionals and sharing of resources, facilities and equipment, effective partnerships, strong involvement of families, coordinated learning with regular school day, linkages between school day teachers and after school personnel and evaluation of program progress and effectiveness.

#### 2. The goals and objectives related to the request

The Hawaii Speed and Quickness ***STEP Program (Sports Training Education and Prevention)*** is a comprehensive school- based program that aims to prevent alcohol, tobacco and other drug use, violence and academic failure by targeting the major social, environmental and psychological factors that promote ATOD use and risky behaviors. The STEP program employs an effective combination of state of the art sports training, mentoring, tutoring and evidence-based LifeSkills Training (LST) substance abuse prevention curricula. The STEP Program is a culturally competent learning framework program that works with the school community, partner organizations, and community businesses as part of a larger more cohesive

agenda for increasing protective factors and decreasing risk factors by providing support across multiple contexts. The STEP program's unique combination of athletics, mentoring, and LST ATOD curricula, generates meaningful buy in from the students, parents, coaches, teachers, and the community. Participation in LST evidence-based curricula increases knowledge and perceived risk about substance use and provides students with the capacity to identify situations in which drugs and alcohol may be used or offered and consider alternative activities. According to SAMSHA's website, LST addresses multiple risk and protective factors and teaches personal and social skills necessary to understand and resist prodrug influences.

The goals and objectives are to demonstrate through the outcomes an increase in academic success and positive behavioral effects of LifeSkills Training on smoking, alcohol and other drugs with the effects lasting up until the end of high school as can be measured.

3. The public purpose and need to be served

Kahuku High and Intermediate School is struggling to increase test scores and effectively prepare their students for college. An issue they continue to look for supportive and innovative ways to address is preparing youth to go to college. According to VP Walter Santiago, the STEP program will address many factors related to the issues students are having that result in academic problems, college readiness and substance prevention. Other issues are nutrition during long days without resources to access food, tutoring, mentoring and overall educational support.

4. Describe the target population to be served.

Youth served in Hawaii Speed and Quickness (HSQ) prevention programs are characterized by limited informal support systems, fractured family relationships, and exposure to substance abuse, poor academic achievement and negative peer involvement.

The Kahuku High and Intermediate has 1380 students that are in grades 7-12. About 45% are receiving free or reduced lunch. 10% of families are on TANF (double the state average or any other community) and 20% receive food stamps. The ethnic makeup is 37.5% Native Hawaiian or part Hawaiian.

The STEP Program is implemented by a team of committed community stakeholders that includes administration and teachers from the school as well as from law enforcement, the University of Hawaii and the community as a whole. The program successfully integrates both school and non-school supports to better ensure that all children have the skills they need. The STEP Program is a school-based program that is offered on-site in the school gyms, athletic courts, fields and classrooms.

HSQ STEP Programs impact youth and families by providing an enriching supervised and structured environment, impacts schools by complementing in-school instruction, impacts communities by preventing youth participation in crime and other anti-social behaviors and impacts the state by ensuring that students have the knowledge and skills necessary to contribute and succeed as adults.

5. Describe the geographic coverage:

The Kahuku High and Intermediate community area has almost 18,000 residents and includes the neighborhoods of Hau'ula, Ka'a'awa, Kahana, Kahana Valley, Kahuku, Kawela, La'ie, Punalu'u, Pupukea, Sunset Beach and Waimea. According to Center on the Family community profile for Kahuku, the median age 29.7 years is younger than 80% of the communities statewide. The ethnic makeup is unique in that it has one of the lowest proportions of Asian residents and one of the highest of Hawaiian and Part Hawaiians. This community also has the highest concentration of other Pacific Islanders in the State (Center on the Family).

## II. Service Summary and Outcomes

1. Describe the scope of work, tasks and responsibilities

The STEP Program is implemented by a team of committed community stakeholders that includes administration and teachers from the school as well as from law enforcement, the University of Hawaii and the community as a whole. The program successfully integrates both school and non-school supports to better ensure that all children have the skills they need. The STEP Program is a school-based program that is offered on-site in the school gyms, athletic courts, fields and classrooms. HSQ STEP Program will impact youth and families by providing an enriching supervised and structured environment, impacts schools by complementing in-school instruction, impacts communities by preventing youth participation in crime and other anti-social behaviors and impacts the state by ensuring that students have the knowledge and skills necessary to go to college and contribute and succeed as adults.

Kamalani Alo will be the Program Director and is currently a part of the staff at Kahuku High and Intermediate. Tajana Santiago will work with a certified Kahuku High and Intermediate teacher to oversee tutoring and educational supports are in place and well as counseling as needed. The VP will assist in completing the team with recommended teachers to teach the Life Skills Curricula and along with identified mentors; the program staff will be responsible for implementing the STEP program. They will be supported and trained by the admin staff, trainers and evaluation team.

2. Provide annual timeline for accomplishing the results or outcomes of the services  
The timeline for implementing services

The STEP program will use the months of July and August to train the staff and work on detailed collaborations and evaluation procedures with the school and partner

organizations to prepare for the opening of the STEP program to align with the beginning of school. The program will officially begin recruitment during the first week of school. The program will have all components implemented by September 15 with the first travel team mentoring session to begin mid September. It will run until the end of school in May and conclude in June at the end of the contract after all evaluations have been concluded.

3. Describe the quality assurance and evaluation plans for the request. Specify how the applicant plans to monitor, evaluate, and improve their results

Dr. Angel Sy Ph.D., will lead the evaluation and quality assurance team.

STEP evaluation is a collaborative process centered on a close relationship between the on-site Team and the program evaluator at every step of the evaluation process. The program evaluator, Dr. Sy, Ph.D., has extensive experience in research, and program evaluation. She is currently on staff at University of Hawaii Medical School. Evaluation for the STEP program at Kahuku High & Intermediate will employ quantitative and qualitative evaluation technique. The Refuse to Use Refuse to Lose program will ask 1) what is the quantity of our effort? (How many did we serve) 2) what was the quality of our effort? (How well did we implement) and 3) what was the quality of impact? (How much better off are the youth we served). Both qualitative and quantitative methods will be used.

The LifeSkills Training evidence based substance use curricula also has performance measurements built in. This will be culturally adapted and measured by Dr. Sy. A full outcomes report will be made available at the end of the year. Dr. Sy will make recommendation and present findings to the school. Please see her attached resume. It is important to note that she has extensive research experience with Native Hawaiian health and substance issues. Please refer to her resume for a detailed list of research bodies.

4. List the measure(s) of effectiveness that will be reported to the state agency through which grant funds are appropriated (the expending agency). The measure(s) will provide a standard and objective way for the State to assess the program's achievement or accomplishment

The measures of effectiveness to be reported in the evaluation and recommendation by Dr. Sy will address the Kahuku High and Intermediate risk and protective factors associated with drug use initiation, skills related to social resistance, enhancing social and personal confidence, academic success and college readiness as measured by an increase in youth taking the PSAT, ACT and SAT and increase in scores.

### **III. Financial**

#### **Budget**

1. The applicant shall submit a budget utilizing the enclosed budget forms as applicable, to detail the cost of the request.

Please see attached budget forms.

2. The applicant shall provide its anticipated quarterly funding requests for the fiscal year 2017.

Quarter 1	Quarter 2	Quarter 3	Quarter 4	Total Grant
30,000	30,000	30,000	30,000	120,000

3. The applicant shall provide a listing of all other sources of funding that they are seeking for fiscal year 2017.

Hawaii Speed and Quickness will be seeking the following grants this year:

- RFP No. HTH 440-17-16BG-G Substance Abuse Prevention Services: Evidence-Based Interventions.
- Private corporate sponsorship from Pepsi Co., Jamba Juice and Jack in the Box.
- County grants that relate to Health and Fitness for youth and communities to include the elderly.
- Private grants such as Campbell Estate.

4. The applicant shall provide a listing of all state and federal tax credits it has been granted within the prior three years. Additionally, the applicant shall provide a listing of all state and federal tax credits they have applied for or anticipate applying for pertaining to any capital project, if applicable.

Hawaii Speed and Quickness is a tax-exempt 501 (c) 3 organization. We have not applied or do we plan to apply for any tax credits.

5. The applicant shall provide a listing of all federal, state, and county government contracts and grants it has been and will be receiving for program funding. Hawaii Speed and Quickness currently has a grant with the Department of Health, ADAD for Substance Abuse Prevention Services contract No. 13-027. HSQ does regular contracts with the counties for Sports clinics and mentoring programs throughout the year.

5. The applicant shall provide the balance of its unrestricted current assets as of December 31, 2015.

The current unrestricted balance as of Dec. 31, 2015 is \$32,000.00. All accounting, payroll and invoicing services are provided by Premier Business Services, President Kevin Nitta. Hawaii Speed and Quickness does have inventory or employee advances and because fixed assets are a different category only the banking balance applies. A complete financial statement is available.

## IV. Experience and Capability

### A. Necessary Skills and Experience

The applicant shall demonstrate that it has the necessary skills, abilities, knowledge of, and experience relating to the request. State your experience and appropriateness for providing the service proposed in this application. The applicant shall also provide a listing of verifiable experience of related projects or contracts for the most recent three years that are pertinent to the request.

Hawaii Speed and Quickness shares the vision of healthy and empowered communities within the counties we serve. Hawaii Speed and Quickness has consistently executed services that fit within and complement the missions and domains identified by established county, coalition, and school plans. HSQ has collaborated with each County and school community to determine if the STEP Program best fits their needs and to coordinate prevention efforts across settings to communicate consistent messages. The mission of HSQ aligns with prevention plans at the Council level and the County level as demonstrated below:

“The Hawaii Speed and Quickness Program is a valued part of our community in the effort to promote health and fitness and provide youth with healthy alternatives after school and especially to educate youth on the dangers of substance use. The program goals of health and fitness, the University of Hawaii mentoring and substance abuse prevention classes and homework tutorial align with the goals of our Kauai Community Drug Response Plan.”  
-October 27, 2008 Theresa C. Koki, Anti-Drug Coordinator.

“The City and County of Honolulu will reduce under-age use of alcohol through involvement of its employees and community members in implementing multi-level, evidence-based prevention strategies, programs and policies.”  
- Honolulu County Advisory Council (HCAC)

The following programs have established Hawaii Speed and Quickness as an innovative agency whose programming operates on a complimentary learning framework and the crosscutting theme that connections matter. Relationships among school administration, staff, families, youth and communities are crucial to the success of the students. For example, the RTURTL school based program eliminates the transportation issue and school staff helps to identify eligible youth. Studies show that a positive relationship with the principal is directly linked to positive outcomes. Hawaii Speed and Quickness programs are all designed in a complimentary framework that complements the school day and is integrated into the school community with a shared vision and goals. The programs all share common elements that include: Goal setting and strong management, Quality staffing that includes certified teachers from the school, sharing of resources, facilities and equipment, effective partnerships, strong involvement of families, coordinated learning with regular school day, linkages between



school day teachers and after school personnel and evaluation of program progress and effectiveness.

Hawaii Speed and Quickness has served or is currently serving the following schools offering the Refuse to Use and Refuse to Lose Programs;

**Maui County:**

1. Maui High – The Refuse to Use and Refuse to Lose Program. Funded by the Department of Health, ADAD.
2. Lokelani Intermediate School Community – The Refuse to Use and Refuse to Lose Program. Funded by the Department of Health, ADAD
3. Iao Middle School Community – Funded by the Department of Health, ADAD
4. Kalama Intermediate School Community – The Refuse to Use and Refuse to Lose Program. Funded by the Office of Hawaiian Affairs and the HMSA Foundation.
5. King Kekaulike High School Community – The Refuse to Use and Refuse to Lose Program. Funded by the Department of Health, ADAD

**Honolulu County**

6. Waianae Intermediate School Community. Funded by Waianae Intermediate, Office of Hawaiian Affairs and Coffee Partners (Jamba Juice).
7. Farrington High School Community – The Refuse to Use and Refuse to Lose Booster Program. Funded by the City and County of Honolulu
8. Radford High School Community – The Refuse to Use and Refuse to Lose Booster Program. Funded by the City and County of Honolulu.
9. Kaimuki High School Community – The Refuse to Use and Refuse to Lose Program. Funded by the Department of Health, ADAD.
10. McKinley High School Community – Funded by the Department of Health, ADAD

**Kauai County**

11. Chiefess Intermediate School Community – The Refuse to Use and Refuse to Lose Program. Funded by the Department of Education.
12. Kapaa High School Community. Funded by the Department of Health, ADAD.
13. Kauai High School Community. Funded by the Department of Health, ADAD.
14. Waimea High School Community – The Refuse to Use and Refuse to Lose Program. Funded by the Department of Health, ADAD.

**Other HSQ Substance abuse prevention Programs:**

15. Hawaii Speed and Quickness offers Health and Nutrition classes with a strong substance use education component, physical education and mentoring for the Hawaii Technology Academy Charter School. HSQ teaches all grade levels K-10<sup>th</sup> at the HTA School and at the University of

Hawaii Athletic complex. The curricula includes substance use prevention and the overall focus is to increase developmental assets and protective factors as well as physical health thereby reducing risk factors that are associated with substance use.

#### Hawaii Speed and Quickness Substance Use Prevention Sports Clinics

16. Kauai County – Waimea, Central Kauai, East Kauai – Kapaa. Camps held at all three sites for youth. University Coaches and athletes from the University of Hawaii Campus sports teams provided group mentoring/training clinics in the following sports: Football, Soccer, volleyball, cheerleading and baseball. Kauai County Mayors Office, a grant for substance use prevention, funded this project for 3 consecutive years. Contact: Roy Nishida, Theresa Koki.
17. Hawaii County –Hilo, Kona. Camps held at both sides of the island for youth. University coaches and athletes provided group mentoring/training clinics in the following sports: Football, soccer, volleyball, cheerleading and baseball. Funded by Hawaii County Mayors Office, Substance use prevention grant. Contact: Billy Kenoi.
18. Honolulu County - Football Camp. Provided mentoring and physical training at the University of Hawaii. Youth attended 3 day camps where they were provided training, educational classes on college entrance requirements, financial aid and clearinghouse requirements for both youth and parents, Youth also attended physical training and mentoring by current NFL Professional players and current players and coaches. Contact: Greg McMackin.
19. Hawaii Speed and Quickness Clinics. The HSQ speed and quickness clinics are held January thru August at the University of Hawaii Lower campus – Athletics. This program has intentional built in mentoring sessions to continue the message of living healthy, drug and alcohol free and doing well in school. This program serves over 5000 kids annually and is made possible thru grants from private foundations and corporate sponsorship.
20. Free community based Clinics. HSQ holds annual clinics in Kapolei (funded by Campbell Estate/Schuler Homes) Waianae (funded by Coffee partners) and Wailuku, Maui (funded by Chevron and Maui Oil).

## **B. Facilities**

The applicant shall provide a description of its facilities and demonstrate its adequacy in relation to the request. If facilities are not presently available, describe plans to secure facilities.

Programming will be implemented at Kahuku High and Intermediate in designated classrooms, weight room, fields and gymnasium as provided in the MOU with Kahuku School. In addition we are working with local churches to provide additional sites for family meetings that will be community based and easier for families to access in the evening.

## **V. Personnel: Project Organization and Staffing**

### **A. Proposed Staffing, Staff Qualifications, Supervision and Training**

The applicant shall describe the proposed staffing pattern and proposed service capacity appropriate for the viability of the request. The applicant shall provide the qualifications and experience of personnel for the request and shall describe its ability to supervise, train and provide administrative direction relative to the request.

The Program Director, Kamalani Alo will be a fulltime position. He is well trained and qualified to oversee all program components. He is currently a mentor and was the Program Director for the Hawaii Speed and Quickness Winter session held at Mid-Pacific Institute. He was in charge of all program aspects and demonstrated leadership and the ability to effectively provide quality services. He will work with the school and community daily. His training will be provided by Rich Miano (sports training and college readiness) and Lehua Soares (monitoring and monthly reports etc.) and Dr. Sy on evaluation needs. He is a graduate of Kahuku High and the University of Hawaii. He will be responsible to oversee the program and interact with school admin. Kamalani will report weekly progress and meet to collaborate with VP Walter Santiago.

Tajana Santiago is a graduate of Kahuku High and Brigham Young University. She has experience working with youth and has worked for Hawaii Speed and Quickness as a mentor and trainer. She will oversee the education and tutoring component. A certified teacher will work with Tajana and together they will implement the LifeSkills Training prevention curricula. These positions are part time.

Dr. Sy will oversee the outcomes, monitoring and evaluation of all aspects of the program. Her resume is attached. She will provide the team training on all necessary tasks related to evaluation.

### **B. Organization Chart**

The applicant shall illustrate the position of each staff and line of responsibility/supervision. If the request is part of a large, multi-purpose

organization, include an organization chart that illustrates the placement of this request.

Please see attached Organization chart. Rich Miano will be supervising the STEP program as it will be a new innovative approach and he will provide training while working with school administration and community members alongside Kamalani Alo.

**C. Compensation**

The applicant shall provide the annual salaries paid by the applicant to the three highest paid officers, directors, or employees of the organization by position..

The three highest paid employees of the organization and their corresponding positions and salaries are;

Lori Miano, COO \$60,000

Rich Miano, CEO \$40,000

Kamalani Alo, Youth Division Oahu Coordinator and STEP Program Director \$35,000

**VI. Other**

**A. Litigation**

The applicant shall disclose any pending litigation to which they are a party, including the disclosure of any outstanding judgment. If applicable, please explain.

There is no pending litigation and there is no history of any litigation or judgments in regards to Hawaii Speed and Quickness.

**B. Licensure or Accreditation**

The applicant shall specify any special qualifications, including but not limited to licensure or accreditation that the applicant possesses relevant to this request.

NA

**C. Private Educational Institutions**

The applicant shall specify whether the grant will be used to support or benefit a sectarian or non-sectarian private educational institution. Please

see Article X, Section 1, of the State Constitution for the relevance of this question.

The grant will be used to support Kahuku High and Intermediate School community.

**D. Future Sustainability Plan**

The applicant shall provide a plan for sustaining after fiscal year 2016-17 the activity funded by the grant if the grant of this application is:

- (1) Received by the applicant for fiscal year 2016-17, but  
The sustainability of this program will be determined as we proceed with close monitoring and evaluation on the best plan to sustain services.
- (2) Not received by the applicant thereafter.

**E. Certificate of Good Standing (If the Applicant is an Organization)**

If the applicant is an organization, the applicant shall submit one (1) copy of a certificate of good standing from the Director of Commerce and Consumer Affairs that is dated no earlier than December 1, 2015.

- Please see attached HCE Certificate of Good Standing dated 1/18/2016.



STATE OF HAWAII  
STATE PROCUREMENT OFFICE

**CERTIFICATE OF VENDOR COMPLIANCE**

This document presents the compliance status of the vendor identified below on the issue date with respect to certificates required from the Hawaii Department of Taxation (DOTAX), the Internal Revenue Service, the Hawaii Department of Labor and Industrial Relations (DLIR), and the Hawaii Department of Commerce and Consumer Affairs (DCCA).

Vendor Name: **HAWAII SPEED AND QUICKNESS**

DBA/Trade Name: **HAWAII SPEED AND QUICKNESS**

Issue Date: **01/18/2016**

Status: **Compliant**

Hawaii Tax#: [REDACTED]  
FEIN/SSN#: [REDACTED]  
UI#: XXXXXX2224  
DCCA FILE#: 207943

**Status of Compliance for this Vendor on issue date:**

Form	Department(s)	Status
A-6	Hawaii Department of Taxation	Compliant
	Internal Revenue Service	Compliant
COGS	Hawaii Department of Commerce & Consumer Affairs	Exempt
LIR27	Hawaii Department of Labor & Industrial Relations	Compliant

**Status Legend:**

Status	Description
Exempt	The entity is exempt from this requirement
Compliant	The entity is compliant with this requirement or the entity is in agreement with agency and actively working towards compliance
Pending	The entity is compliant with DLIR requirement
Submitted	The entity has applied for the certificate but it is awaiting approval
Not Compliant	The entity is not in compliance with the requirement and should contact the issuing agency for more information

## BUDGET REQUEST BY SOURCE OF FUNDS

Period: July 1, 2016 to June 30, 2017

Applicant: \_\_\_\_\_ Hawaii Speed and Quickness

BUDGET CATEGORIES	Total State Funds Requested (a)	Total Federal Funds Requested (b)	Total County Funds Requested (c)	Total Private/Other Funds Requested (d)
<b>A. PERSONNEL COST</b>				
1. Salaries	75,000			
2. Payroll Taxes & Assessments	9,500			
3. Fringe Benefits	12,000			
<b>TOTAL PERSONNEL COST</b>	<b>96,500</b>			
<b>B. OTHER CURRENT EXPENSES</b>				
1. Airfare, Inter-Island	0			
2. Insurance	750			
3. Lease/Rental of Equipment	0			
4. Lease/Rental of Space	0			
5. Staff Training	1,000			
6. Supplies	10,550			
7. Telecommunication	1,200			
8. Utilities	0			
9 Administrative Sub-Contracts:	20,000			
10				
11				
12				
13				
14				
15				
16				
17				
18				
19				
20				
<b>TOTAL OTHER CURRENT EXPENSES</b>	<b>33,500</b>			
<b>C. EQUIPMENT PURCHASES</b>				
<b>D. MOTOR VEHICLE PURCHASES</b>				
<b>E. CAPITAL</b>				
<b>TOTAL (A+B+C+D+E)</b>	<b>130,000</b>			
<b>SOURCES OF FUNDING</b>		Budget Prepared By:		
(a) Total State Funds Requested		Lori Miano, COO	808-228-7447	
(b) Total Federal Funds Requested		Name (Please type or print)	Phone	
(c) Total County Funds Requested			42.022	
(d) Total Private/Other Funds Requested		Signature of Authorized Official	Date	
<b>TOTAL BUDGET</b>		Lori Miano, COO		
		Name and Title (Please type or print)		





## BUDGET JUSTIFICATION - EQUIPMENT AND MOTOR VEHICLES

Period: July 1, 2015 to June 30, 2016

Applicant: \_\_\_\_\_Hawaii Speed and Quickness\_\_

DESCRIPTION EQUIPMENT	NO. OF ITEMS	COST PER ITEM	TOTAL COST	TOTAL BUDGETED
NA			\$ -	
			\$ -	
			\$ -	
			\$ -	
			\$ -	
<b>TOTAL:</b>				

JUSTIFICATION/COMMENTS:

DESCRIPTION OF MOTOR VEHICLE	NO. OF VEHICLES	COST PER VEHICLE	TOTAL COST	TOTAL BUDGETED
NA			\$ -	
			\$ -	
			\$ -	
			\$ -	
			\$ -	
<b>TOTAL:</b>				

JUSTIFICATION/COMMENTS:

## BUDGET JUSTIFICATION - CAPITAL PROJECT DETAILS

Period: July 1, 2015 to June 30, 2016

Applicant: \_\_\_\_\_Hawaii Speed and Quickness.

FUNDING AMOUNT REQUESTED						
TOTAL PROJECT COST	ALL SOURCES OF FUNDS RECEIVED IN PRIOR YEARS		STATE FUNDS REQUESTED	OTHER SOURCES OF FUNDS REQUESTED	FUNDING REQUIRED IN SUCCEEDING YEARS	
	FY: 2013-2014	FY: 2014-2015	FY:2015-2016	FY:2015-2016	FY:2016-2017	FY:2017-2018
PLANS	NA					
LAND ACQUISITION						
DESIGN						
CONSTRUCTION						
EQUIPMENT						
<b>TOTAL:</b>						
<b>JUSTIFICATION/COMMENTS:</b>						

**DECLARATION STATEMENT OF  
APPLICANTS FOR GRANTS PURSUANT TO  
CHAPTER 42F, HAWAI'I REVISED STATUTES**

The undersigned authorized representative of the applicant certifies the following:

- 1) The applicant meets and will comply with all of the following standards for the award of grants pursuant to Section 42F-103, Hawai'i Revised Statutes:
  - a) Is licensed or accredited, in accordance with federal, state, or county statutes, rules, or ordinances, to conduct the activities or provide the services for which a grant is awarded;
  - b) Complies with all applicable federal and state laws prohibiting discrimination against any person on the basis of race, color, national origin, religion, creed, sex, age, sexual orientation, or disability;
  - c) Agrees not to use state funds for entertainment or lobbying activities; and
  - d) Allows the state agency to which funds for the grant were appropriated for expenditure, legislative committees and their staff, and the auditor full access to their records, reports, files, and other related documents and information for purposes of monitoring, measuring the effectiveness, and ensuring the proper expenditure of the grant.
- 2) If the applicant is an organization, the applicant meets the following requirements pursuant to Section 42F-103, Hawai'i Revised Statutes:
  - a) Is incorporated under the laws of the State; and
  - b) Has bylaws or policies that describe the manner in which the activities or services for which a grant is awarded shall be conducted or provided.
- 3) If the applicant is a non-profit organization, it meets the following requirements pursuant to Section 42F-103, Hawai'i Revised Statutes:
  - a) Is determined and designated to be a non-profit organization by the Internal Revenue Service; and
  - b) Has a governing board whose members have no material conflict of interest and serve without compensation.

Pursuant to Section 42F-103, Hawai'i Revised Statutes, for grants used for the acquisition of land, when the organization discontinues the activities or services on the land acquired for which the grant was awarded and disposes of the land in fee simple or by lease, the organization shall negotiate with the expending agency for a lump sum or installment repayment to the State of the amount of the grant used for the acquisition of the land.

Further, the undersigned authorized representative certifies that this statement is true and correct to the best of the applicant's knowledge.

Hawai'i  
\_\_\_\_\_  
Lori Miano, COO

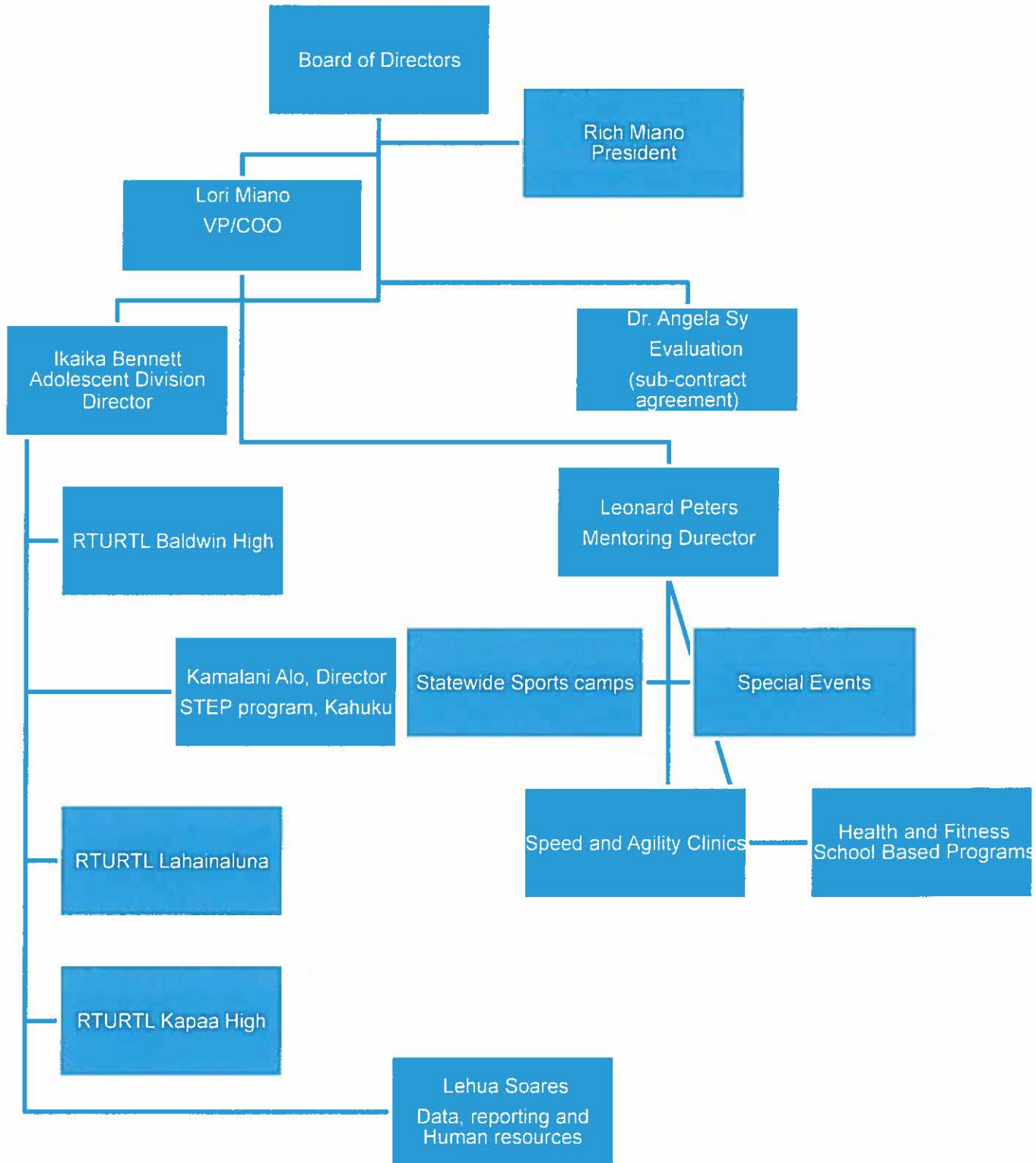
1/18/2016

Lori Miano, COO

# GOVERNMENT CONTRACTS AND/OR GRANTS

Applicant: \_\_\_\_\_Hawaii Speed and Quickness\_\_\_\_\_

	CONTRACT DESCRIPTION	EFFECTIVE DATES	AGENCY	GOVERNMENT ENTITY (U.S. / State / Haw / Hon / Kau / Mau )	CONTRACT VALUE
1.	Substance Abuse Prevention Services HTH 440-2-12-1	7/1/2012 – 6/30/2016	Department of Health ADAD	State	216,000 annually
2.	* Please see list of services for contracts previously awarded.				
3.					
4.					
5.					
6.					
7.					
8.					
9.					
10.					
				TOTAL	216,000





Hawaii Speed and Quickness is a 501 (c) 3 and provides prevention services in the areas of substance abuse prevention, health and fitness, mentoring and educational support in communities statewide.

## Board of Directors 2015

**Kent Untermann**  
Board Chair  
Term 2004-2016  
Pictures Plus, CEO  
808-673-4700

**Joe Balangitao**  
Term 2010-2015  
Maui Inter-scholastic League  
Director

**Marco Johnson**  
Vice Chair  
Term 2004-2016  
Antelope Medical University  
CEO/Founder  
661-726-1911

**Danja Hayashi**  
Term 2011-2016  
BMW, Controller  
808-597-1225

**Greg Meier**  
Term 2004-2016  
Coffee Partners Hawaii, CFO  
808-545-1149

**Michael Tresler**  
Term 2007-2016  
Grove Farms, CPA  
808-651-0593

**Katherine Wallen**  
Term 2015-2017  
Haas Insulation, COO  
808-753-3536

PHONE

808-228-7447

WEB

[Hawaiispeedandquickness.com](http://Hawaiispeedandquickness.com)



Hawaii Speed and Quickness is a 501 (c) 3 and provides prevention services in the areas of substance abuse prevention, health and fitness, mentoring and educational support in communities statewide.

## List of Services

Hawaii Speed and Quickness has served or is currently serving the following schools offering the Refuse to Use and Refuse to Lose Programs;

### Maui County:

1. Maui High – The Refuse to Use and Refuse to Lose Program. Funded by the Department of Health, ADAD.
2. Lokelani Intermediate School Community – The Refuse to Use and Refuse to Lose Program. Funded by the Department of Health, ADAD
3. Iao Middle School Community – Funded by the Department of Health, ADAD
4. Kalama Intermediate School Community – The Refuse to Use and Refuse to Lose Program. Funded by the Office of Hawaiian Affairs and the HMSA Foundation.
5. King Kekaulike High School Community – The Refuse to Use and Refuse to Lose Program. Funded by the Department of Health, ADAD
6. Lahainaluna High and Intermediate School – The Refuse to Use and Refuse to Lose Program, Funded by the Department of Health, ADAD
7. Baldwin High School, – The Refuse to Use and Refuse to Lose Program, Funded by the Department of Health, ADAD
- 8.

### Honolulu County

9. Waianae Intermediate School Community. Funded by Waianae Intermediate, Office of Hawaiian Affairs and Coffee Partners (Jamba Juice).
10. Farrington High School Community – The Refuse to Use and Refuse to Lose Booster Program. Funded by the City and County of Honolulu
11. Radford High School Community – The Refuse to Use and Refuse to Lose Booster Program. Funded by the City and County of Honolulu.
12. Kaimuki High School Community – The Refuse to Use and Refuse to Lose Program. Funded by the Department of Health, ADAD.
13. McKinley High School Community – Funded by the Department of Health, ADAD

### Kauai County

14. Chiefess Intermediate School Community – The Refuse to Use and Refuse to Lose Program. Funded by the Department of Education.
15. Kapaa High School Community. Funded by the Department of Health, ADAD.
16. Kauai High School Community. Funded by the Department of Health, ADAD.
17. Waimea High School Community – The Refuse to Use and Refuse to Lose Program. Funded by the Department of Health, ADAD.

Other HSQ Substance abuse prevention Programs:

PHONE

WEB

808-228-7447

[Hawaiispeedandquickness.com](http://Hawaiispeedandquickness.com)

18. Hawaii Speed and Quickness offers Health and Nutrition classes with a strong substance use education component, physical education and mentoring for the Hawaii Technology Academy Charter School. HSQ teaches all grade levels K-10<sup>th</sup> at the HTA School and at the University of Hawaii Athletic complex. The curricula includes substance use prevention and the overall focus is to increase developmental assets and protective factors as well as physical health thereby reducing risk factors that are associated with substance use.

#### Hawaii Speed and Quickness Substance Use Prevention Sports Clinics

19. Kauai County – Waimea, Central Kauai, East Kauai – Kapaa. Camps held at all three sites for youth. University Coaches and athletes from the University of Hawaii Campus sports teams provided group mentoring/training clinics in the following sports: Football, Soccer, volleyball, cheerleading and baseball. Kauai County Mayors Office, a grant for substance use prevention, funded this project for 3 consecutive years. Contact: Roy Nishida, Theresa Koki.
20. Hawaii County –Hilo, Kona. Camps held at both sides of the island for youth. University coaches and athletes provided group mentoring/training clinics in the following sports: Football, soccer, volleyball, cheerleading and baseball. Funded by Hawaii County Mayors Office, Substance use prevention grant. Contact: Billy Kenoi.
21. Honolulu County - Football Camp. Provided mentoring and physical training at the University of Hawaii. Youth attended 3 day camps where they were provided training, educational classes on college entrance requirements, financial aid and clearinghouse requirements for both youth and parents, Youth also attended physical training and mentoring by current NFL Professional players and current players and coaches. Contact: Greg McMackin.
22. Hawaii Speed and Quickness Clinics. The HSQ speed and quickness clinics are held January thru August at the University of Hawaii Lower campus – Athletics. This program has intentional built in mentoring sessions to continue the message of living healthy, drug and alcohol free and doing well in school. This program serves over 5000 kids annually and is made possible thru grants from private foundations and corporate sponsorship.
23. Free community based Clinics. HSQ holds annual clinics in Kapolei (funded by Campbell Estate/Schuler Homes) Waianae (funded by Coffee partners) and Wailuku, Maui (funded by Chevron and Maui Oil).



**Curriculum Vitae**  
**Angela Sy, DrPH**

**Office**

University of Hawaii at Manoa  
John A. Burns School of Medicine  
651 Ilalo Street  
BSB #320  
Honolulu, HI 96813  
[sya@hawaii.edu](mailto:sya@hawaii.edu)

**Home**

1212Nuuanu Avenue  
Apt. #2002  
Honolulu, HI96817  
808-294-4119  
[asyhawaii@gmail.com](mailto:asyhawaii@gmail.com)

**Education**

**University of North Carolina, Chapel Hill, NC: Doctor of Public Health, School of Public Health, Department of Health Behavior and Health Education, August 2005**

**University of Hawaii at Manoa, Honolulu, HI: Master of Public Health, Health Services Administration and Planning, December 1993**

**Santa Clara University, Santa Clara, CA: Bachelor of Science in Combined Sciences, Sociology minor, June 1989**

**Academic Appointments**

**Research Assistant Professor, Department of Pediatrics, John A. Burns School of Medicine, University of Hawaii at Manoa, Honolulu, HI, August 2015 – present**

**Assistant Professor, Doctor of Nursing Practice Program, School of Nursing and Dental Hygiene, University of Hawaii at Manoa, Honolulu, HI, August 2012 – July 2015.**

**Assistant Professor, Department of Public Health Studies, John A. Burns School of Medicine, University of Hawaii at Manoa, Honolulu, HI, August 2007 – July 2012.**

**Research Evaluator, HuiMalama o ke Kai, Native Hawaiian Center of Excellence, John A. Burns School of Medicine, University of Hawaii at Manoa, Honolulu, HI, September 2006 – July 2007.**

**Research Program Evaluator, Department of Native Hawaiian Health, John A. Burns School of Medicine, University of Hawaii at Manoa, Honolulu, HI, August 2003 – September 2006.**

**Research Associate, Cancer Research Center of Hawaii, University of Hawaii at Manoa, Honolulu, HI, March 2001 – July 2003.**

**Other Professional Experience**

**Program Specialist, Alcohol and Drug Abuse Division, Department of Health, State of Hawaii, Honolulu, HI., April 1994 - July 1997.**

**Provider Relations Coordinator, Island Care, Honolulu, HI, September 1990 - December 1991.**

---

## Peer Reviewed Publications

1. Fagan, P, Antonio, AM, Hamamura, F, Lagua, IJ, Liu, J, Park, DJ, Pokhrel, P, Herzog, T, Pagano, I, Cassel, K, Sy, A, Jorgensen, D, Lynch, T, Kawamoto, C, Boushey, CJ, Franke, A, Clanton, M, Moolchan, ET; Linda Alexander. Menthol Cigarette Smoking and Obesity in Young Adult Daily Smokers in Hawaii. *Preventive Medicine Reports* In press
2. Demment MM, Peters K, Dykens JA, Dozier A, Nawaz H, McIntosh, S, Sy, A, Irwin, T, Fogg, TT, Khaliq, M, Blumenfeld, R, Massoudi, M, Dye, TDV. Developing the Evidence Base to Inform Best Practice: A Scoping Study of Breast and Cervical Cancer Reviews in Low- and Middle-Income Countries. *PLoS ONE* 2015; 10(9): e0134618. doi: 10.1371/journal.pone.013461
3. Fagan, P, Moolchan, ET, Pokhrel, P, Herzog, T, Cassel, KD, Pagano, I, Franke, AA, Kaholokula, JK, Sy, A, Alexander, LA, Trinidad, DR, Sakuma, KL, Johnson, CA, Antonio, A, Jorgensen, D, Lynch, T, Kawamoto, C, Clanton, MS. Biomarkers of Tobacco Smoke Exposure in Racial/Ethnic Groups at High Risk for Lung Cancer. *American Journal of Public Health* 2015; 105(6): 1237-1245.
4. Nitta, M, Tanner, C, Navarte, K, Silverio, A, Luces, P, Zabala, R, Navasca, D, Sy, A, Palafox, NA. Policy, System, and Environment Strategies to Promote Physical Activity and Healthy Food Sources to Address Guam's Disparate Non-Communicable Disease Burden. *Journal of Healthcare for the Poor and Underserved* 2015; 26(2): 96-103
5. Cardazone, G, Sy, AU, Chik, I, Corley, LK. Mapping One Strong 'Ohana: Using network analysis and GIS to enhance the effectiveness of a statewide coalition to prevent child abuse and neglect. *American Journal of Community Psychology* 2014; 53:346–356.
6. Buenconsejo-Lum, LE, Saraiya, M, Sy, AU, Townsend, J. Cervical Cancer Screening in the USAPI In Proceedings of the 2014 ASCCP Biennial Scientific Meeting Oral and Poster Abstract Presentations. *Journal of Lower Genital Tract Disease* 2014; 18(5): S1-S27
7. Sy, A, Heckert, K, Jamison, C, Maskarinec, GG, Lim, A, Buenconsejo-Lum, L. Pacific CEED Legacy Projects and Local Projects: Culturally Tailored Promising Practices to Prevent Breast and Cervical Cancer in the US Affiliated Pacific Island Jurisdictions. *International Public Health Journal* 2013; 5(1).
8. Sy, A, Heckert, K, Jamison, C, Maskarinec, GG, Lim, A, Buenconsejo-Lum, L. Pacific CEED Legacy Projects and Local Projects: Culturally Tailored Promising Practices to Prevent Breast and Cervical Cancer in the US Affiliated Pacific Island Jurisdictions. In Merrick, J (Ed) *Public Health Yearbook 2013*. New York: Nova Science, 2013.
9. Sy, A, Cuaresma, C, Braun, KL, Duquez, E, Young, DM. An Academic-Community Partnership to Explore High Smoking Prevalence in Filipina Girls. *California Journal of Health Promotion* 2013; 11(1): 1-14
10. Sy, A, Heckert, K, Jamison, C, Maskarinec, GG, Lim, A, Buenconsejo-Lum, L. Pacific CEED Legacy Projects and Local Projects: Culturally Tailored Promising Practices to Prevent Breast and Cervical Cancer in the US Affiliated Pacific Island Jurisdictions. In Caron, RM, Merrick, J (Eds) *Building Community Capacity: Skills and Principles*. New York: Nova Science, 2012
11. Nigg, CR, Qureshi, K, Inouye, J, Sy, A, Sullivan, K, Boland, MG, Burns, JA. Evaluation of an emerging research center: Lessons learned. *International Journal of Research in Nursing*, 2012; 3(1), 1-7.
12. Sy, A, Heckert, K, Buenconsejo-Lum, L, Hedson, J, Tamang, S, Palafox, N. An Evaluation of the Pacific Regional Cancer Coalition: Outcomes and Implications of a Coalition to Address Cancer Disparities in the US Affiliated Pacific Islands. *Hawaii Medical Journal* 2011; 70(11): 47-53.
13. Sy, A, Greaney, M, Nigg C, Hirose-Wong, S. Developing a Measure of Hawaiian Cultural Values: HuiMalama o ke Kai Youth Wellness Program. *Asia Pacific Journal of Public Health* 2011; DOI: 10.1177/1010539511427760.
14. Hishinuma, ES, Chang, JY, Sy, A, Greaney, MF, Morris, KA, Scronce, AC, Rehuher, D, Nishimura, ST. HuiMalama o ke Kai: A Positive Prevention Based Youth Development Program Based on Native Hawaiian Values and Activities. *Journal of Community Psychology* 2009; 37(8): 987-1007.
15. Sy, A., Glanz, K. Factors Influencing Teachers' Implementation of an Innovative Tobacco Prevention Curriculum for Multiethnic Youth: Project SPLASH. *Journal of School Health* 2008; 78(5): 264-273

## Publications Other

Crump, C., Sy, A. Local Fitness and Nutrition Council Manual: Guide for Community Action 2000: Physical Activity and Nutrition Unit, Health Promotion Branch, Chronic Disease Prevention and Control Section, Division of Public Health, North Carolina Department of Health and Human Service.

## Peer Reviewed Presentations

1. Dye, T, Peters, K, Comerford, B, Nawaz, H, Demment, M, Cordero, J, Sy, A, Fogg, T, Blumenfeld, R, Sullivan, R, Massoudi, M. Global Lessons, Local Impact: Development of the CDC's Global and Territorial Health Research Network – A Thematic Network of the Prevention Research Centers Program. Oral presentation, American Public Health Association Conference November 2015, Chicago, IL.
2. Liu, M, Ng, T, Chen, M, Jue, L, Tsang, A, Chan, J, Cheng, J, Sy, A, Sun, A. Public Health Youth Leadership Academy Program. Oral presentation, American Public Health Association Conference November 2015, Chicago, IL.
3. Nguyen, TT, Tsoh, J, Gildengorin, G, Stewart, S, Tong, E, Sy, A, Jo, A, Lo, P, Sung, MJ, Cuaresma, C, Lo, M, Kagawa-Singer, M, Social Demographic and Healthcare Factors Associated with Colorectal Cancer Screening Among Filipino, Hmong, and Korean Americans. Poster presentation, American Public Health Association Conference November 2015, Chicago, IL.
4. Sy, A, Cuaresma, C, Kagawa-Singer, M, Stewart, S, Tsoh, JY, Nguyen, TT. Examining Learning Preferences for Nutrition and Physical Education Curricula in a Colorectal Cancer Screening in Three Asian American Communities. Oral presentation, American Public Health Association Conference November 2015, Chicago, IL.
5. Tsoh, JT, Sy, A, Tong, E, Sung, MJ, Jo, A, Cuaresma, C, Lo, P, Chee Lo, M, Gildengorin, G, Lam, H, Wong, C, Stewart, S, Kagawa-Singer, M, Nguyen, TT. Healthcare Communication Barriers and Poor Health among Filipino, Hmong and Korean American Older Adults. Poster presentation, American Public Health Association Conference November 2015, Chicago, IL.
6. Tsoh, JY, Tong, E, Jo, A, Sy, A, Lo, P, Chee Lo, M, Sung, MJ, Cuaresma, C, Gildengorin, G, Lam, H, Wong, C, Stewart, S, Kagawa-Singer, M, Nguyen, TT. Intention to Obtain Colorectal Cancer Screening among Filipino, Hmong and Korean Older Americans. Poster presentation, American Public Health Association Conference November 2015, Chicago, IL.
7. Juarez, DT, Davis, J, Kataoka-Yahiro, M, Sy, A, Sullivan, K, Albright, CL. Change in Health Status Related to Inability to Afford Medications and Asian American Ethnicity. Oral presentation, Mountain West Clinical Translational Infrastructure Network Annual Meeting, June 2015, Las Vegas, NV.
8. Lee-Jayaram, J, Berg, BW, Sy, A. Instructional Design by Novices: Emergent Themes for Effective Scenario Development. Oral presentation, Annual Meeting on Simulation in Healthcare, January 2015, New Orleans, LA.
9. Sy, A, Buenconsejo-Lum, LE, Zhang, G, Fedora, R, Nitta, M, Ma, C, Hernandez, B, Abad, M, Balajadia, R. A Pilot Study of Pacific Islander and Asian-American college students' knowledge and intentions on human papillomavirus (HPV) vaccination: Results and Recommendations. Poster presentation, American Public Health Association Conference November 2014, New Orleans, LA.
10. Buenconsejo-Lum, L, Sy, A, Diaz, T, Taitano, JR, Palafox, NA. Community Driven Assessment of Cervical Cancer Prevention and Screening in the US Affiliated Pacific Islands. Poster presentation, 9<sup>th</sup> Annual He Huliau Health Disparities Conference September 2014, Kapolei, HI
11. Nitta, M, Tanner, C, Navarte, K, Silverio, A, Lucas, P, Zabala, R, Navasca, D, Sy, A, Palafox, N. Community and Academic Partnership Developing Health Food Sources and Promoting Physical Activity in Guam. 9<sup>th</sup> Annual He Huliau Health Disparities Conference September 2014, Kapolei, HI.
12. Sy, A, Diaz, T, Buenconsejo-Lum, LE. Attitudes and Beliefs on the Human Papillomavirus (HPV) and Cervical Cancer Screening in the US Affiliated Pacific Islands: Results of a Collaborative Assessment with Community Stakeholders and Members. Mountain West Clinical Translational Infrastructure Network Annual Meeting, June 2014, Las Vegas, NV.
13. Buenconsejo-Lum, L, Saraiya, M, Sy, A, Townsend, J. Cervical Cancer Screening in the USAPI. Oral presentation. American Society for Colposcopy and Cervical Pathology Biennial Scientific Meeting, April 2014, Scottsdale, AZ.

14. Buenconsejo-Lum, L, Zhang, G, Sy, A, Ma, C, Hernandez, B. Reducing Health Disparities in Female College Students HPV Immunization Rates: Results of a baseline survey on knowledge, HPV vaccination and decision-making. Poster presentation. Biomedical Sciences Symposium, April, 2014, Honolulu, HI  
**Peer Reviewed Presentations (continued)**
15. Sy, A, Cardazone, G, Chik, I. Evaluation Findings From the first Two Years of a State-Wide Coalition Campaign to Raise Awareness of Child Abuse and Neglect in Hawai'i: One Strong 'Ohana. Oral presentation, Hawaii Pacific Evaluation Association Conference, September 2013, Kaneohe, HI.
16. Sy, A, Lim, A, Buenconsejo-Lum, L, Palafox, N. Pacific Center of Excellence in the Elimination of Disparities: Evaluation framework and results of a 5 year project to reduce Cancer Disparities in the US Affiliated Pacific Islands. Poster presentation, American Public Health Association Conference October 2012, San Francisco, CA.
17. Sy, A, Lim, A, Hedson, J, Buenconsejo-Lum, L, Palafox, N. A follow-up assessment of the Pacific Regional Coalition: Results and implications of a regional coalition to integrate cancer and chronic disease prevention in the Pacific. Oral presentation, American Public Health Association Conference October 2012, San Francisco, CA.
18. Sy, A, Lim, A, Buenconsejo-Lum, L, Palafox, N. Implementation and results reporting of an online database to evaluate cancer prevention and control outcomes in the US Affiliated Pacific Islands: The Pacific Center of Excellence in the Elimination of Disparities Performance Management. Poster presentation, American Public Health Association Conference October 2012, San Francisco, CA.
19. Chun, MB, Chun, B, Sy, A. Collaborating on Teams with Diverse Professions: Experiences with "Cultural" Matters in Administrative, Clinical, and Research Settings in Psychology, Medicine, and Public Health. Oral presentation, Hawai'i Psychological Association Annual Convention October 2012, Kaneohe, HI.
20. Cardazone, G, Sy, A, Chik, I, Apo, D. One Strong 'Ohana: An Evaluation of a Partnership Campaign to Raise Awareness of Child Abuse and Neglect Prevention in Hawai'i. Oral presentation, Hawai'i Pacific Evaluation conference, September 2012, Kaneohe, HI.
21. Sy, A, Jamison, Lim, A, Maskarinec, G, Heckert, K, Buenconsejo-Lum, L. Culturally Relevant Promising Practices to Prevent Cancer Pacific. Oral presentation, Office of Disease Prevention and Health Promotion National Health Promotion Summit Conference, April 2012, Washington, DC.
22. Sy, A, Heckert, K, Lim, A, Buenconsejo-Lum, L, Palafox, N. Progress and initial outcomes of an online evaluation framework addressing cancer disparities in the US Affiliated Pacific Islands: The Pacific Cancer Programs Performance Management Plan's online database. Poster presentation, American Public Health Association Conference November 2011, Washington, DC.
23. Wyatt, L, Kwon, S, Wilkonson-Lee, A, Sy, A, Maxwell, AE, Kerr, DL, Tran, J, Guinyard, JJ, Wynn, T, Holdern, C, VanDevanter, N. Measuring coalition functioning in community-based partnerships through core indicators. Oral presentation, American Public Health Association Conference November 2011, Washington, DC.
24. Sy, A, Jamison, C, Kojane, J, Maskarinec, G, Robinette, H, Palafox, N. Pacific CEED Legacy and Local Projects: Culturally Relevant Promising Practices to Prevent Breast and Cervical Cancer in the US Affiliated Pacific Island Jurisdictions. Oral presentation, CDC REACH US Conference, June 2011, Long Beach, CA.
25. Tolenoa, N, Taulung, L, Sy, A, Heckert, K, Tamang, S. Development of a Local Breast and Cervical Cancer Health Communication Campaign to Increase knowledge and Breast and Cervical Cancer Screening Behaviors. Poster presentation. 2011 CDC National Comprehensive Cancer Control Program Meeting, May 2011, Atlanta, GA.
26. Heckert, KA, Sy, A, Buenconsejo-Lum, L, Reiter, M, Palafox, N. Pacific Cancer Programs Performance Management Plan and Online Database: An evaluation framework based on the Socio-Ecological Model. Poster presentation. American Public Health Association Conference, November 2010, Denver, CO.
27. Sy, A, Heckert, KA, Buenconsejo-Lum, L, Tamang, S, Palafox, N. Applying Community Based Participatory Research & Partnership Principles to Reduce Cancer Disparities in the Pacific: Lessons Learned from the Cancer Council of the Pacific Islands and Regional Partnership Evaluation. Oral presentation. American Public Health Association Conference, November 2010, Denver, CO.
28. Sy, A, Heckert, KA, Hedson, J, Buenconsejo-Lum, L, Tamang, S, Palafox, N. Cancer Council for the Pacific Islands: Outcomes & implications of the regional coalition self-assessment. Oral presentation. American Public Health Association Conference, November 2010, Denver, CO.

29. **Sy, A, Cuaresma, C, Braun, K.** An Academic and Community Partnership Approach to Investigate and Reduce Smoking Among Filipina Girls in Hawai'i. Poster presentation. Community-Campus Partnerships for Health Conference, May 2010, Portland, OR.

#### Peer Reviewed Presentations (continued)

30. **Sy, A, Cuaresma, C, Braun, K.** An Academic and Community Partnership Approach to Investigate and Reduce Smoking Among Filipina Girls in Hawai'i. Poster presentation. Community-Campus Partnerships for Health Conference, May 2010, Portland, OR.
31. **Sy, A, Duquez, E, Braun, K.** Community based participatory research to investigate smoking among Filipina girls in Hawaii. Poster presentation. American Public Health Association Conference, November 2009, Philadelphia, PA.
32. **Sy, A, Heckert, K.** The Pacific Center of Excellence in the Elimination of Disparities Performance Management Plan. Oral presentation, American Public Health Association Conference, October 2008, San Diego, CA
33. **Sy, A.** Developing a measure of Hawai'ian cultural values: HuiMalama o ke Kai Youth Wellness Programme. Oral presentation, Aotearoa New Zealand Evaluation Association Conference, July 2008, Rotorua, New Zealand
34. **Sy, A.** Pacific Center of Excellence in the Elimination of Disparities. Poster presentation, Aotearoa New Zealand Evaluation Association Conference, July 2008, Rotorua, New Zealand
35. **Sy, A., Leake, A., Ranases, S., Gomes, H., Kekauoha, P., Palakiko, D.M., Dillard, A., Rose, C., Kaholokula, K., & Mau, M.** Developing an Obesity Control Program for Native Hawaiians and Pacific Peoples Using a Community Based Participatory Approach, Poster presentation, He Huliau Cardiovascular Disease Conference, May 2006, Kapolei, HI.
36. **Sy, A., Glanz, K., Koga, K., Lunde, K., Nako-Piburn, J., & Steffen, A.** Factors Related to Teachers' Implementation of a School Based Tobacco use Prevention Intervention in Hawaii: Project SPLASH, Oral presentation, American Public Health Association Conference, December 2005, Philadelphia, PA
37. **Sy, A., Koga, K., Lunde, K., Nako-Piburn, J., Glanz, K., & Steffen, A.** Implementation of an Innovative Tobacco Prevention Curriculum: Project SPLASH. Poster presentation, American Public Health Association Conference, November 2004, San Francisco, CA

#### Invited Presentations

1. **Technology Needs in Public Health Promotion and Services in the US Affiliated Pacific Islands.** 1<sup>st</sup> Annual Rochester Global Health Symposium. June 2015, Rochester, NY.
2. **What Filipino Girls Think About Smoking.** Hawaii Chapter Oncology Nursing Society Conference. August 2013, Honolulu, HI.
3. **Community Needs Assessment.** Social Justice Leadership Workshop, John A. Burns School of Medicine, University of Hawaii at Manoa. April 2012, Honolulu, HI.
4. **Community Collaborations and Interventions: Models of Community Engagement.** Cross Cultural Health Care Conference. October 2011, Honolulu, HI.
5. **Using Community-Based Research Methods to Explore High Smoking Prevalence in Filipina Girls.** Coalition for Tobacco Free Hawaii Annual Meeting. November 2010, Honolulu, HI.
6. **Community Collaborations and Interventions: Models of Community Engagement.** Cross Cultural Health Care Conference. October 2011, Honolulu, HI.
7. **Using Community-Based Research Methods to Explore High Smoking Prevalence in Filipina Girls.** Coalition for Tobacco Free Hawaii Annual Meeting. November 2010, Honolulu, HI.
8. **Using Community-Based Research Methods to Explore High Smoking Prevalence in Filipina Girls.** Asian American Network of Cancer Awareness, Research, and Training Annual Steering Committee Meeting. June 2010, Honolulu, HI.
9. **Hui Malama o ke Kai Youth Wellness Program.** Service Learning Solutions Workshop, Campus Community Partnerships for Health. Office of Public Health Studies, John A. Burns School of Medicine, University of Hawaii at Manoa, March 2009, Honolulu, HI.

10. **Community Based Participatory Research Addressing Youth Health Disparities in Hawaii.** Koko`kolu Community Pediatrics Fellowship Program, Department of Pediatrics, John A. Burns School of Medicine. October 2008, Honolulu, HI.
11. **Maximizing Community Mobilization and Exchange.** Community Partnership Gathering and Training, Campus Community Partnerships for Health, Office of Public Health Studies, John A. Burns School of Medicine, University of Hawaii at Manoa, October 2008. Honolulu, HI.

#### Invited Presentations (continued)

12. **Community Participatory Approaches to Evaluation: Addressing Health Disparities in Hawaii and the Pacific.** Public Health Colloquium Series, Office of Public Health Studies, John A. Burns School of Medicine, University of Hawaii at Manoa, August 2008, Honolulu, HI.
13. **Rubrics of Native Hawaiian Values.** Native Hawaiian Education Council Indicators Project Meeting, July 2008, Honolulu, HI.
14. **Health Disparities Among Filipinos: Tobacco Use Prevalence,** 7<sup>th</sup> National Filipino American Association Empowerment Conference, September 2006, Honolulu, HI.
15. **An Exploration of Culturally Relevant Community Health Interventions to Reduce Smoking Among Filipino Americans,** Queen's Medical Center Clinical Research Conference, June 2006, Honolulu, HI.

#### Honors and Awards

1. **Nominee, University of Hawaii at Manoa School of Nursing and Dental Hygiene, Excellence in Teaching Award,** November 2014
2. **Clinical Translational Research Infrastructure Network Visiting Scholar Fellows, Institutional Development Award Program, National Institutes of Health, University of Nevada-Las Vegas.** March-June 2014. Competitively selected and awarded funding for training in translational research through a mentor-mentee visiting scholar exchange program at respective institutions.
3. **Diversity and Equity Initiative Award, University of Hawaii,** February 2009. Awarded funding to implement a diversity project to benefit the campus and community
4. **American Legacy Foundation Scholar,** February 2008. Awarded travel scholarship to increase diversity in tobacco research and attend the 2008 Society for Research on Nicotine and Tobacco Conference
5. **Summer Research Career Development Institute in Minority Health and Health Disparities Scholar, EXPORT Center, School of Public Health, University of Pittsburgh,** June 2005. Selected to attend training for new investigators to prepare for a research career and to increase the number of investigators focusing on minority health research
6. **Native American, Alaska Native, and Native Hawaiian Caucus Scholarship,** November 2004. Received funding to attend the 2004 American Public Health Association conference and participate in Caucus activities to encourage public health research in Native communities
7. **University of North Carolina Graduate Student Opportunity Funding,** May 2004. Received funding for travel expenses to North Carolina for work to support completion of dissertation
8. **American Public Health Association Student Award, Exemplary Student Work in Health Education and Promotion,** November 2003. Poster selected to present at 2003 American Public Health Association conference
9. **University of North Carolina School of Public Health Graduating Class of 2000 Professional Development Grant,** Fall 2000: Received funding to support off campus dissertation research
10. **National Cancer Institute Scholars Program, 1998 – 2000:** Received funding to attend national conferences on cancer and minorities through NCI's initiative to encourage graduate students to pursue research in cancer prevention and control among Asian American and Pacific Islander populations

#### Research Grant Participation and Contracts: Ongoing

1. NIH # 1P30GM114737-01, Ric Yanagihara, MD (PI)  
Pacific Center for Emerging Infectious Diseases Research  
Department of Pediatrics, John A. Burns School of Medicine, University of Hawaii at Manoa  
Role: Evaluator, 7/1/15 – 6/30/20

Evaluate Phase III of the Centers of Biomedical Research Excellence for emerging infectious diseases which aims to enhance the conditions that accelerate the pace of scientific discovery, heighten research productivity and increase competitiveness for extramural funding.

**Research Grant Participation and Contracts: Ongoing (continued)**

2. CDC #3U48D005026-01S1, Timothy Dye, MD (PI)  
**Prevention Research Center: Global and Territorial Health Research Network Coordinating Center  
University of Rochester**  
**Role: Project Lead, RCMI Translational Research Network, 9/30/14 – 9/29/19**  
Serve as Pacific research liaison to bring together a large active network of collaborating researchers collaborating and seeking funding to support novel translational and community research.
3. CDC# 1U58DP005810-01, Neal Palafox, MD (PI)  
**USAPI Community Health Interventions Project  
Department of Family Medicine and Community Health, John A. Burns School of Medicine,  
University of Hawaii at Manoa**  
**Role: Program Evaluator, 9/30/14 – 9/29/17**  
Evaluate policy, systems, and environmental change interventions to further develop or enhance practice/evidence based programs to decrease tobacco use and promote good nutrition in the US Affiliated Pacific Islands
4. Queen's Medical Center--University of Hawaii at Manoa School of Nursing and Dental Hygiene Cooperative Research Partnership, Dana Monday (PI), Angela Sy, (PI)  
**Evaluation of an Integrative Wellness Model in a Cardiothoracic Surgical Inpatient Population  
Queen's Medical Center and School of Nursing and Dental Hygiene, University of Hawaii at Manoa,  
July 1, 2014 – June 30, 2017**  
To evaluate the impact of a Holistic Nursing Integrative Care Model on patient reports of pain and anxiety, use of pain medication and report of experience and satisfaction.
5. NIH# U54MD008149, Elizabeth Ofili, MD (PI), Ric Yanagihara, MD (PD)  
**Research Centers in Minority Institutions (RCMI) Translational Research Network, Research  
Coordinating Center**  
**Department of Pediatrics, John A. Burns School of Medicine, University of Hawaii at Manoa**  
**Role: Community Engagement Coordinator, 9/30/12 – 9/29/17**  
Coordinate and oversee community engagement activities with core and other functional leaders across the national RCMI community and beyond.

**Research Grant and Contract Participation: Completed**

1. NIH # 1U54CA153499-01, Moon Chen, PhD (PI) , Tung Nguyen, MD (PI)  
**AANCART: The National Center For Reducing Asian American Cancer Health Disparities  
University of California – Davis**  
**Role: Hawaii Site Research Director, 9/1/10 – 8/31/15**
2. NIH #5G12MD007601-28, Marla Berry, PhD (PI), Lee Buenconsejo-Lum, MD (Project Lead/Co-Investigator), RCMI Bioscience Research Infrastructure Development for Grant Enhancement and Success (BRIDGES) – Administrative Supplement  
**Reducing Health Disparities in Female College Student HPV Immunization Rates  
John A. Burns School of Medicine, University of Hawaii at Manoa**  
**Role: Project Evaluator/Co-Investigator, 11/1/13 – 6/30/14**
3. Coalition for a Tobacco Free Hawaii, State of Hawaii Tobacco Prevention and Control Trust Fund  
**REAL**  
**Role: Principal Investigator, 1/1/13 – 3/31/14**
4. Hawaii Children's Trust Fund, Hawaii Community Foundation

**One Strong `Ohana**

**Role: Program Evaluator, 5/15/11 – 6/30/13**

**Research Grant and Contract Participation: Completed(continued)**

5. CDC Grant #1U58DP000976-01, Neal Palafox, MD (PI)  
**Pacific Center of Excellence in the Elimination of Health Disparities  
Department of Family Medicine, John A. Burns School of Medicine, University of Hawaii at Manoa  
Role: Evaluator  
Role: Evaluator, 10/1/07 – 9/30/12**
6. US DOE Grant # S362A080010, Jan Dill (PI)  
**HuiMalama o ke Kai, HuiMalama I ke Kai Foundation, Partners in Development  
Role: Program Evaluator, 6/30/08 – 8/31/12**
7. SAMHSA, Substance Abuse Treatment and Prevention Block Grant #2B08TI100015-1  
**Epidemiology and Evaluation Services  
Role: Co- Investigator, 3/1/12 – 7/31/12**
8. HRSA # D34HP16044, Winona Lee (PI)  
**Native Hawaiian Center of Excellence, John A. Burns School of Medicine, University of Hawaii at Manoa  
Role: External Evaluator, 3/1/12 – 6/30/12**
9. NIH Grant #3 U01 CA114630-03S3, Clayton Chong, MD (PI)  
**CBPR Approaches to Reduce Smoking Among Filipina Girls in Hawai`i, Community Networks Program PilotProject, `Imi Hale Native Hawaiian Cancer Network  
Role: Project Leader, 10/1/08 – 3/31/10**
10. NIH Grant # 5P20NR010671-03, Jillian Inouye, PhD, (PI)  
**Center for Ohana Management of Chronic Illness, School of Nursing and Dental Hygiene, University of Hawaii at Manoa  
Role: External Evaluator, 10/1/07 – 9/10/12**
11. US DOE Grant #S362A05002: 10/1/05 – 9/30/08, US DOE Grant #Q186C030007: 10/1/03 – 9/30/08  
**Hui Malama o ke Kai  
Role: Principal Investigator**
12. NIH Grant # 7R01CA077108-05, Karen Glanz, PhD (PI)  
**Smoking Prevention Launch Among Students in Hawaii, Cancer Research Center of Hawaii, University of Hawaii at Manoa  
Role: Research Associate, 7/15/99 – 1/31/04**

**Teaching: Classroom Instruction**

**Instructor, Nursing Research Methods, N363: Summer 2014, 22 students; Fall 2014, 25 students, 3 credit hours**  
**Instructor, Program Evaluation, N746: Spring 2014, 12 students, Spring 2015, 4 students, 3 credit hours**  
**Instructor, Health Promotion and Disease Prevention N605: Fall 2012, 9 students; Fall 2013, Fall 2013, 10 students, Spring 2014, 14 students, Spring 2015, 8 students, 3 credit hours**  
**Instructor, Introduction to Epidemiology, N600: Spring 2013, 35 students, 3 credit hours**  
**Instructor, Undergraduate Honors Seminar, HON 291/391: Fall 2012, 7 students, 3 credit hours**  
**Instructor, Qualitative Methods I N742, Fall 2012, 10 students, 3 credit hours**  
**Instructor, Needs Assessment PH649: Spring 2010, 15 students; Spring 2011, 10 students; Spring 2012, 10 students, 3 credit hours**  
**Instructor, Program Evaluation PH765: Summer 2008, 15 students; Fall 2009, 19 students; Fall 2008, 14 students; Fall 2010, 15 students; Fall 2011, 15 students, 3 credit hours**  
**Instructor, Community Based Participatory Research PH740: Spring 2010, 7 students; Spring 2009, 10 students; Spring 2011, 5 students, 3 credit hours**



## **Teaching: Invited**

**Community Based Participatory Research and Global Health, Minority Health International Research Training, John A. Burns School of Medicine, April 2015.**  
**An Overview Nutrition Education: Facilitating Why and How to Take Action, Concepts in Nutrition Introduction to Epidemiology, Community, Public and Global Health: N450, February 2013**  
**Qualitative Research Methods, Cultural Competency for the Healthcare Professions Undergraduate Honors Seminar: HON491, October 2012, 2013.**  
**AANCART: The National Center for Reducing Asian American Cancer Disparities Research Project on Lay Health Workers and Asian Americans. Community Based Participatory Research PH 704, September 2011**  
**Program Evaluation, Public Health Nursing Workshops 6 week course, January – March, 2011**  
**Program Evaluation, Public Health Training Hui. September 2010, January 2011**  
**Public Health Evaluation, Hawaii Department of Health Workshops 6 week course, June – July 2010 and January to March 2011**  
**Development, Assessment, and Evaluation of Cultural Competency Efforts, Cross-Cultural Health Care Conference: Collaborative and Multidisciplinary Interventions. American College of Surgeons - Hawaii Chapter and Society for Community Research and Action - Western Region, February 2010**  
**Health Promotion, Wuhan University, China, June 2009**  
**Community Building, Social Science and Public Health: PH 623, October 2007, 2008**  
**Qualitative Research Methods, Health Promotion Research: PH 702, April 2008, 2009, 2012**  
**Community Based Participatory Research, Current Topics in Social and Behavioral Health Sciences: PH 660 March 2008**  
**Cultural Competency, Integrative Seminar: PH 789 March 2008, April 2009**  
**Physical Activity Opportunities at Kaka`ako, Health and Well Being for Medical Students: MDED 513, Medical Education, John A. Burns School of Medicine, January 2008**  
**School Based Health Education Interventions to Promote Cardiovascular Health: Promises and Challenges, Cardiovascular Epidemiology Seminar, John A. Burns School of Medicine, February 2007**

## **Current Student Advising**

### **Committees**

1. Deborah Harrison, MSN, Doctor of Nursing Practice Project Academic Advisor, Implement an Academic Advanced Practiced Nurse Managed Health Center at Kapiolani Community College
2. Julaine Ching, MSN, Doctor of Philosophy committee member, The Relationship Between Self-Care and Depression of African American, Asian American, Hispanic American, and Native American Adults Living with Diabetics
3. Victoria Mathis, MSN, Doctoral Scholarly Inquiry Project committee member, Preventing Avoidable Hospitalizations from Long Term Care Facilities through a Collaborative Care Model
4. Carol Petith-Zbiciak, MSN, Doctoral Scholarly Inquiry Project committee member, Closing the Gap in Health Care Services for the Homeless

### **Research Mentoring**

Matthew Lim, BS, MPH student (awarded Honorable Mention for Social Sciences Oral Presentation for Lim, MA. Identifying and Validating Family Factors Associated with High Smoking Rates Among Filipina Girls in Hawaii. Oral presentation, University of Hawaii at Manoa Research Proposal Conference of Undergraduate Research and Creative Work, May 2011)

Deion Asuncion, University of Hawaii-Student Excellence, Equity and Diversity Program and Philippine Medical Association of Hawaii mentoring program

**Current Student Advising: Research Mentoring (continued)**

Marjorie Balcobos, BS, University of Hawaii-Student Excellence, Equity and Diversity Program and Philippine Medical Association of Hawaii mentoring program

Roger Sibayan, University of Hawaii-Student Excellence, Equity and Diversity Program and Philippine Medical Association of Hawaii mentoring program

**Service**

**Professional**

**Chair-Elect and Vice President, Asian and Pacific Islander Caucus, American Public Health Association, April 2014-November 2015**

**Caucus Councilor, Asian Pacific Islander Caucus, American Public Health Association, November 2011 – November 2013**

**Steering Committee Member, Asian American Network for Cancer Awareness, Research and Training-Hawaii, September 2010 – present**

**Treasurer, Hawaii Public Health Association, October 2013 – October 2015**

**Vice President, Hawaii Public Health Association, October 2009-October 2011**

**Board Member, Hawaii Public Health Association, June 2007-present**

**Member, Hawaii Health Equity Summit Planning Committee, Office of Health Equity, Department of Health, State of Hawaii, April 2009 – September 2009**

**Advisory Board member, Asian American Network for Cancer Awareness, Research and Training-Hawaii Chapter, January 2006 – present**

**University**

**Advisory Member, Cultural Competency Committee, John A. Burns School of Medicine, October 2008 – present**

**President, University of Hawaii School of Public Health Alumni Association Chapter, February 2008-present**

**Member, School of Nursing and Dental Hygiene Committees – Doctor of Nursing Practice, Doctor of Philosophy, Research, August 2012 – July 2015**

**McNair Student Achievement Program, Student Equity, Excellence and Diversity Program, May 2011 – May 2013**

**Member, Department of Public Health Sciences Committees - Evaluation, Student Recruitment, Doctor of Public Health Committees, August 2007 –July 2012**

**Community**

**Ho`ouluAina, Kokua Kalihi Valley Clinic, Volunteer, Honolulu, HI, July 2011 - present**

**Kokua Market Co-op, Vice President, Board of Directors, Honolulu, HI, February 2010 - present**

**Team Jet, Coach, Running clinics, Honolulu, HI, March 2008– March 2012**

**Mid Pacific Institute, Assistant Coach, Cross country and track: August 2006 – December 2007**

**Professional Affiliations and Service**

American Public Health Association

Hawaii Public Health Association

University of Hawaii School of Public Health Alumni Association

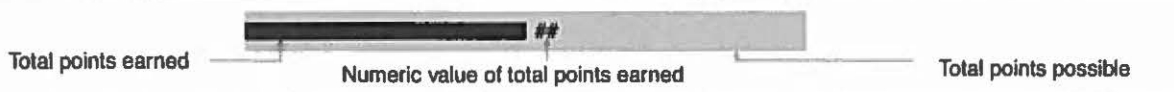
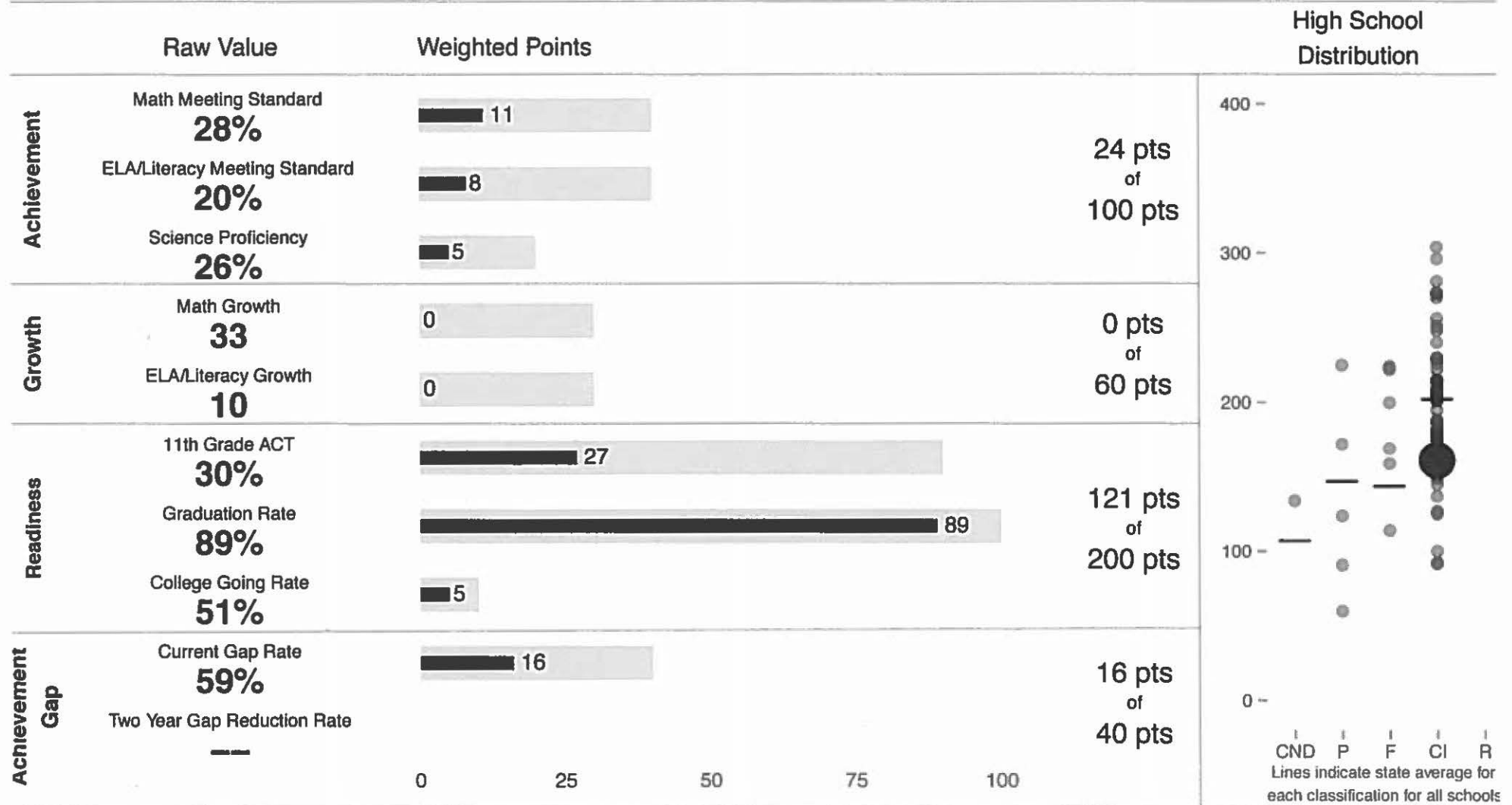
# Kahuku High & Intermediate

**161 points** of 400 points

School Year 2014–2015: Continuous Improvement

Trigger: None

School Year 2013–2014: Continuous Improvement



www.hawaiipublicschools.org

NOTE: Final display numbers are rounded, which may cause subtotals to appear to sum incorrectly. The total points value on the upper right is accurate.

Run Date: Tuesday, September 22, 2015