

House Districts 8, 9, 10, 11

Senate Districts 5, 6

THE TWENTY-EIGHTH LEGISLATURE
APPLICATION FOR GRANTS
CHAPTER 42F, HAWAII REVISED STATUTES

Log No:

For Legislature's Use Only

Type of Grant Request:

GRANT REQUEST - OPERATING

GRANT REQUEST - CAPITAL

"Grant" means an award of state funds by the legislature, by an appropriation to a specified recipient, to support the activities of the recipient and permit the community to benefit from those activities.

"Recipient" means any organization or person receiving a grant.

STATE DEPARTMENT OR AGENCY RELATED TO THIS REQUEST (LEAVE BLANK IF UNKNOWN):

STATE PROGRAM I.D. NO. (LEAVE BLANK IF UNKNOWN):

1. APPLICANT INFORMATION:

Legal Name of Requesting Organization or Individual:

Grow Some Good

Dba:

Street Address: 545 Halalal Pl. Kihei, Hi 96753

Mailing Address: 545 Halalal Pl. Kihei, Hi 96753

2. CONTACT PERSON FOR MATTERS INVOLVING THIS APPLICATION:

Name KATHY BECKLIN

Title Co-Founder, Treasurer, Board of Directors

Phone # 808-344-0469

Fax # 866-286-3631

E-mail Kathy@GrowSomeGood.org

3. TYPE OF BUSINESS ENTITY:

- NON PROFIT CORPORATION INCORPORATED IN HAWAII
- FOR PROFIT CORPORATION INCORPORATED IN HAWAII
- LIMITED LIABILITY COMPANY
- SOLE PROPRIETORSHIP/INDIVIDUAL
- OTHER

Community Program operating under fiscal sponsor
Tri-Isle Resource & Development Council.

Grow Some Good has completed and submitted IRS 501(c)3
request paperwork and is expecting approval by 6/1/16.

6. DESCRIPTIVE TITLE OF APPLICANT'S REQUEST:

The Growing Sustainability Project addresses the need to develop sustainable funding for Grow Some Good's school garden programs by providing schools with tools and support to independently fund a portion of their garden costs for the foreseeable future.

4. FEDERAL TAX ID #:

5. STATE TAX ID #:

7. AMOUNT OF STATE FUNDS REQUESTED:

FISCAL YEAR 2017: \$ 65,814

8. STATUS OF SERVICE DESCRIBED IN THIS REQUEST:

- NEW SERVICE (PRESENTLY DOES NOT EXIST)
- EXISTING SERVICE (PRESENTLY IN OPERATION)

SPECIFY THE AMOUNT BY SOURCES OF FUNDS AVAILABLE
AT THE TIME OF THIS REQUEST:

STATE \$ 0

FEDERAL \$ 0

COUNTY \$ 0

PRIVATE/OTHER \$ 0

AUTHORIZED SIGNATURE

KATHY BECKLIN, TREASURER, BOARD OF DIRECTORS

DATE SIGNED

1-20-16



RECEIVED
1/21/16 *na*

Application for Grants

I. Background and Summary

Applicant Background.

Grow Some Good (GSG) is a nonprofit community program dedicated to creating hands-on, outdoor learning experiences that cultivate curiosity about natural life cycles, connect students to their food sources, and inspire better nutrition choices. We help establish food gardens in local schools while providing resources and curriculum support in the areas of agriculture, science, food education and nutrition. In this way, our programs address health, the environment and youth development. Our mission is to “Cultivate a healthy community by strengthening local agriculture and improving access to nutritious, affordable food.”

Grow Some Good started in 2008, as a program of South Maui Sustainability, installing and supporting gardens at Kihei Elementary, Lokelani Intermediate School and Kamali'i Elementary Schools. In 2012, in response to requests for assistance from other schools across the island and to better focus on its mission, the group evolved into an independent organization and adopted the name “Grow Some Good.” Through partnerships with the County of Maui, Community Work Day, Maui School Garden Network, Kihei-Wailea Rotary Club and other local organizations, Grow Some Good expanded its outreach to more neighborhood schools and their surrounding communities. Today Grow Some Good serves approximately 3,000 students in 12 schools across Maui. It is led by a Board of Directors, which includes three co-founders of the organization, and is actively involved in supporting the business operations of the organization. Its staff includes a Development Director, a Program Manager, and seven Garden Coordinators, who in turn manage a large number of community volunteers who help maintain the gardens.

Our program activities include instructing students in basic gardening tasks, such as preparing the soil, planting, weeding, identifying bugs and pests, harvesting produce, and composting waste. Students learn about the nutritional content and value of the produce, and how proper nutrition helps maintain good health. Several times a year we host Harvest Party events where local chefs instruct youth in preparing and making meals from the produce in their school garden. In this way, students are instructed in “farm to table” processes and can understand how the food they eat is grown, harvested, prepared, and then made into a meal that they can eat. Our lessons are designed to be appropriate for age and education level. At higher grades we incorporate more sophisticated lessons in areas such as design, planning, commercial production and economics.

By aligning required curricula with lessons in the garden, we create an outdoor classroom to teach science, math and nutrition. For example, if students are learning about graphs in the classroom, we explain how the garden can be laid out in a grid format. Teachers do the same, taking the lessons from the garden back into the classroom. Through this symbiotic relationship, we are able to provide schools with quality garden programs, reinforcing important classroom lessons, and the schools are able to assume greater fiscal and maintenance responsibility over time, as teachers, staff, and parents gain understanding of this educational asset.

We chose the school garden program approach to help increase food independence and healthy food choices for local families but also because it provides sustainable, lifelong skills. Most gardeners today say that their interest stemmed from a positive childhood experience with gardening. We also have learned from the last several years that students “eat what they grow.” Evidence-based studies have consistently shown that students are far more likely to retain information and adopt new behaviors with hands-on, active lessons that fully engage them. Involving chefs and other food specialists gives these activities high impact for the students. Through school gardens, we help students gain the skills they need to provide food for themselves and their families, as well as be able to teach their own children those same skills in the future. We conduct regular evaluation of our efforts, and the transformation that the school gardens make for students and teachers has been clearly demonstrated.

The target population served by GSG’s program are the students and their families at the schools where we have gardens, currently: Baldwin High School, Kahului Elementary, Kamali’i Elementary, Kihei Elementary, Kihei Charter Intermediate, Lahaina Intermediate, Lokelani Intermediate, Maui Preparatory Academy, Pomaika’i Elementary, Pu’u Kukui Elementary, Princess Nahi’ena’ena Elementary and Wailuku Elementary. These schools are in the South Maui, Central Maui and West Maui areas of the island. These students and families have diverse economic and ethnic backgrounds, and also include a large Pacific Islander population. GSG also supports summer and after school YMCA programs that are held on school grounds, including those students in our garden activities as well. The gardens also serve educators and interested community members through our “Work and Learn Days.”

At this time, Grow Some Good operates with the assistance of a fiscal sponsor, Tri-Isle RC&D Council. GSG has submitted a 501(c)3 application and expects approval by the IRS for tax-exempt status by June 1, 2016.

Goals and Objectives Related to this Request:

The Grow Some Good program is entering its eighth year of creating and supporting school gardens. What began as one school garden has expanded into gardens at twelve schools and the cost of managing so many schools has increased as we have scaled up. As part of Grow Some Good’s strategic growth plan, we are implementing our *Growing Sustainability Project*, starting in 2016. The goal of this project is to support our current client schools, but now provide them with the tools they need to fund a portion of their own garden program costs, investing them in their gardens and allowing Grow Some Good to meet the demand for expansion into additional schools.

The Public Purpose and Need to be Served.

The *Growing Sustainability Project* addresses the need to fund and maintain school garden programs long term not only at our twelve participating schools, but for any school contemplating a school garden. Grow Some Good has been bearing the brunt of the financial burden for the gardens since their inception. As we work toward developing self-sufficiency for our programs, our intent is to have each school meet the goal of providing 50% of their school

garden costs. Schools are being asked to start with a 25% contribution in the 2016-17 school year; followed by 35% in 2017-18; and finally, maintaining a 50% contribution in 2018-19 and beyond.

School administrators are often already at full capacity in terms of allocable staff time, program development and budget dollars. Through this project we provide them with the tools they need to build and maintain a regular source of income for their school garden. We will assist them in identifying and applying for untapped and underutilized resources within the DOE, and other community partners that can benefit their gardens.

When each school becomes more financially self-sufficient, funds become available in the Grow Some Good budget for expansion into additional schools. In this way we will be able to address the demand for expansion and reach students at more schools, while creating an effective sustainability model for our current schools. This project also builds organizational capacity to expand and better manage the many volunteers who help maintain school gardens—a strategy that contributes to lower costs while increasing self-sufficiency skills and food independence in the community.

As the *Growing Sustainability Project* gets implemented, Grow Some Good will be able to share the results of what we have learned, and best practices for other schools, through workshops with the Maui School Gardens Network, statewide through the Hawaii Farm to School Conference, and on our website.

This funding request assists Grow Some Good in developing and implementing a customized funding sustainability plan for each of its twelve client schools, thus helping those schools become more self-supporting in its programs, and allowing Grow Some Good to assist new schools in getting their school garden programs started.

II. Service Summary and Outcomes

Through the second semester of the 2016 school year, Grow Some Good will work with school administrators to create a sustainability plans for their school gardens. Currently we are gathering data to assess each school as it relates to student participation; supplies, equipment, tools and staff supplied for each garden; the program cost for each school; and current contributions from each school. Meetings will be conducted with the principal and critical administrative staff at every school. During these meetings we will share the *Growing Sustainability Project* plan, discuss the schools' current status, and the goals they will set for the 2017-18 school year.

As part of each school's *Growing Sustainability Project* we will share sources of additional funding and ways to reduce garden costs. These include:

- Assign one or more Part-Time Teachers (PTT) to support the garden
- Have the Parent Teacher Association (PTA) commit to a funding goal
- Secure matching funds from local businesses to support the garden
- Conduct produce and plant sales for fundraisers

- Implement “farm-to-market” fundraisers
- Use more cost-efficient and sustainable gardening techniques
- Expand volunteer support through outreach and program development
- Find supplemental support as needed

Schools will receive the following support from Grow Some Good:

Staffing:

The Program Manager will work with school staff and administrators to design an appropriate program for each school. They will also help to implement the programs and work directly with Garden Coordinators to support their efforts.

The Development Director works with the Program Manager and the school staff and administrators to create fundraising plans for each school.

Garden Coordinators typically work directly with schools in their school gardens. As part of the *Growing Sustainability Project*, they will assist in various aspects of implement their garden’s fundraising plans.

A new centralized position of Volunteer Coordinator also will work with schools in recruiting, training, and retaining local volunteers to assist with each school garden.

Supplemental Support Toward Schools:

Grow Some Good would continue to support schools toward their goal of reaching 25% of school garden costs by providing labor and materials, not to exceed 15% of the total school program cost.

Timeline.

Initial planning and communication with schools will begin in the last semester of the 2015-16 school year. The project takes place during 2016-17, with implementation beginning in August of 2016. In December 2016, a mid-point evaluation will occur to determine each school’s progress. The program will continue through June of 2017. At this time we will see the outcomes of the *Growing Sustainability Project* as schools share their Year One fundraising results.

The schools continue to benefit from the initial planning and implementation of this project in the years to come, eventually meeting their goal of raising 50% of funds by Year Three. (See table.)

GROWING SUSTAINABILITY PROJECT - TIMELINE

Activities	Year One 2016-17	Year Two 2017-18	Year Three 2018-19	Sustainability In Future Years
Review Current Funding Situation	X			
Identify New Funding Sources	X			
Work with schools to prioritize funding activities	X			
Work with schools to implement funding activities	X			
Implement short-term actions with long-term effects; e.g.:	X	X	X	X
Hiring Part Time Teacher				
Allocating Specific Funds from Parents' Association				
Conduct fundraising activities during the year	X	X	X	X
Implement Cost Saving Ideas	X	X	X	X
Use Supplemental Funds as needed; up to 15% of budget	X			
Meet goal of providing 25% of funding	X	X		
Meet goal of providing 35% of funding			X	
Meet goal of providing 50% of funding				X

Quality Assurance and Evaluation Plans.

Project implementation will include scheduled reporting by the schools to Grow Some Good on an annual basis, to assure that schools are on target and on time to meet their funding goals. The additional support for schools (see Budget Narrative) is an incentive to meeting those goals. The Program Manager has primary responsibility for ensuring that schools are on track.

Evaluation will include the initial assessment that Grow Some Good is conducting currently, which will serve as a baseline for future school sustainability. Reports at the end of each year of the project will show progress in both development and implementation of plans and success in achieving plan goals. A survey of school administrators will also be made at the mid-point and conclusion of the project (formative and summative data) to gather input on the programs strengths and weaknesses and identify challenges.

Reporting. Measures of effectiveness will include:

- Deliverable of the Sustainability Plans as designed and implemented at each school.
- Total dollars raised, and percent of costs raised for each school garden, reported annually.
- Dollar goals for 2017-18 Fundraising.
- Dissemination of project through Maui School Garden Network, Hawaii Farm to School Conference, and website.

III. Financial

Budget

1. The applicant shall submit a budget utilizing the enclosed budget forms as applicable, to detail the cost of the request.
 - a. Please also see attached Budget Narrative.
2. The applicant shall provide its anticipated quarterly funding requests for the fiscal year 2017.

Quarter 1	Quarter 2	Quarter 3	Quarter 4	Total Grant
\$19,744	\$13,163	\$13,163	\$19,744	\$65,814

3. The applicant shall provide a listing of all other sources of funding that they are seeking for fiscal year 2017.
 - a. Maui School Garden Network (\$15,000 anticipated, awaiting County of Maui budget)
4. The applicant shall provide a listing of all state and federal tax credits it has been granted within the prior three years.
 - a. None.

Additionally, the applicant shall provide a listing of all state and federal tax credits they have applied for or anticipate applying for pertaining to any capital project, if applicable.

 - b. None.
5. The applicant shall provide a listing of all federal, state, and county government contracts and grants it has been and will be receiving for program funding.
 - a. None.
6. The applicant shall provide the balance of its unrestricted current assets as of December 31, 2015.
 - a. \$12,732.84

IV. Experience and Capability

Necessary Skills and Experience.

Grow Some Good is served by a dedicated and active Board of Directors who manage the organization. Co-founder Kathy Becklin has many years of experience as a project manager in the defense and high tech sector, and is a real estate agent on Maui. Kirk Surry has extensive experience in corporate public relations and social media. Both are graduates of the Master Gardener certificate program with the University of Hawai'i College of Agriculture and Human Resources and recently received the Na Wiliwili Award from Kihei Community Association for their community leadership. The incoming President of the Board, Susan Wyche, directs the Office of Grant Development for UH Maui College, has written over \$25 million in successful grants, and recently administered a \$10 million federal grant for the UH Community College System. In addition to extensive knowledge and experience in school gardens, all board members have demonstrated fundraising experience.

Grow Some Good has an extensive network of community partners with which it shares resources in the areas of agriculture, science, food education, and nutrition. This program draws on a network of Maui's leading chefs, nutritionists, the YMCA, Maui School Garden Network, and individual school administrations and PTA groups. GSG's current fiscal authority is Tri-Isle RC&D Council, Inc., a 501(c)(3) non-profit corporation authorized under the USDA Natural Resources Conservation Service. GSG has applied for 501(c)(3) status, with approval anticipated before June 30, 2016.

Facilities.

Our school garden programs take place on-site at participating schools. The space and facilities available vary by school. For each garden we have a tool shed for secure storage; either a temporary or permanent shade cover area for working on projects, giving instruction, and in some cases, sprouting seedlings; work tables for the students to plant seeds and do other projects; and the garden space itself, which is made up of both raised beds and in-ground planting areas.

Common workstations in the garden include: planting areas, compost bins, container gardens, worm bins, and a nursery area. Typical supplies and equipment include irrigation systems, measurement tools, wheelbarrows, shovels, rakes, rototillers, weed whackers, shredders, produce scales and kitchen prep kits.

At this time, Grow Some Good has no dedicated office space.

V. Personnel: Project Organization and Staffing

Program Manager

Nio Kindla is a founding member of Grow Some Good and is very active in several community groups that support education and farming. Nio contributes strengths in culinary arts as a personal chef, and operations, organizational planning, special event planning, technology,

policies and procedures development with 15 years of experience managing a law office. As Program Manager he acts as the liaison between the school administration and Grow Some Good leadership, provides management and support for school Garden Coordinators, and is responsible to ensure that gardens are a safe environment for participants. As part of the *Growing Sustainability Project*, he will work with school administrations to define the needs, level of support and associated costs incurred for the garden; and work with the Development Director to identify grants and other sources of potential income to support the program at each school.

Development Director

Malia Bohlin holds a Bachelor's degree in Advertising and Communication as well as a Master's degree in Non-Profit Management. She has twenty years of non-profit fundraising experience, including working with individual donors, corporate leaders, and making requests for government and private foundation grants. As part of the *Growing Sustainability Project*, she will be working with the Program Manager to assist schools in identifying fundraising sources, setting goals, and developing fundraising plans.

Garden Coordinators

Garden Coordinators work primarily in the gardens providing direct instruction to students for the Grow Some Good program. They will assist schools with fundraising activities and support the Program Manager and Development Director as needed.

Collin Blake has extensive experience in creating and maintaining organic gardens, landscape design, installation, and maintenance. He holds a BA from Griffith University in Australia, and has completed courses in Permaculture Design, Watershed Management and Tropical Agriculture Design Course Echo Farm. He also has related experience in business ownership and development and providing community demonstrations and training.

Jen Chalupsky has experience with natural gardening methods including basic grafting and compost building. Her educational background includes a BA in communications from the University of San Diego. Her experience includes interactive marketing, branding and relationship development.

Joel Howard has a variety of farm experience, including working with soil erosion control, organic aquaponics fertilizers, irrigation systems, IMO and Biochar. Has an AAS in Sustainable Tropical Crop Production from University of Hawaii Maui College. He is active in the Farm Apprentice Mentorship Program provided by Maui Farmer's Union. He has relatable experience in building team projects, and interpersonal relations training.

Corrina Yu's background includes a B.A. in Adolescent Environmental Education from Evergreen State College. She has extensive gardening and food production knowledge. Her experience in team building and leadership activities will help support this project.

Nadine Rasmussen holds an A.A. with a focus in Sociology & Business from the University of Wisconsin. Besides her work in school gardens, she has an extensive business and customer service background.

Samantha Haskell has worked and volunteered in community and educational gardens in a variety of roles. She holds a B.S. in Marine Science from Eckerd College, a Permaculture Design Certificate, and has helped with grant writing for a local non-profit farm.

Tricia Calhoun has extensive experience in garden and landscaping design and has been teaching in school gardens for five years. She has a BA from the University of Oregon majoring in International Studies and Environmental Studies. Her background working in schools and at Maui County's Community Workday is helpful in identifying school garden needs and collaborating with community partners to meet those needs.

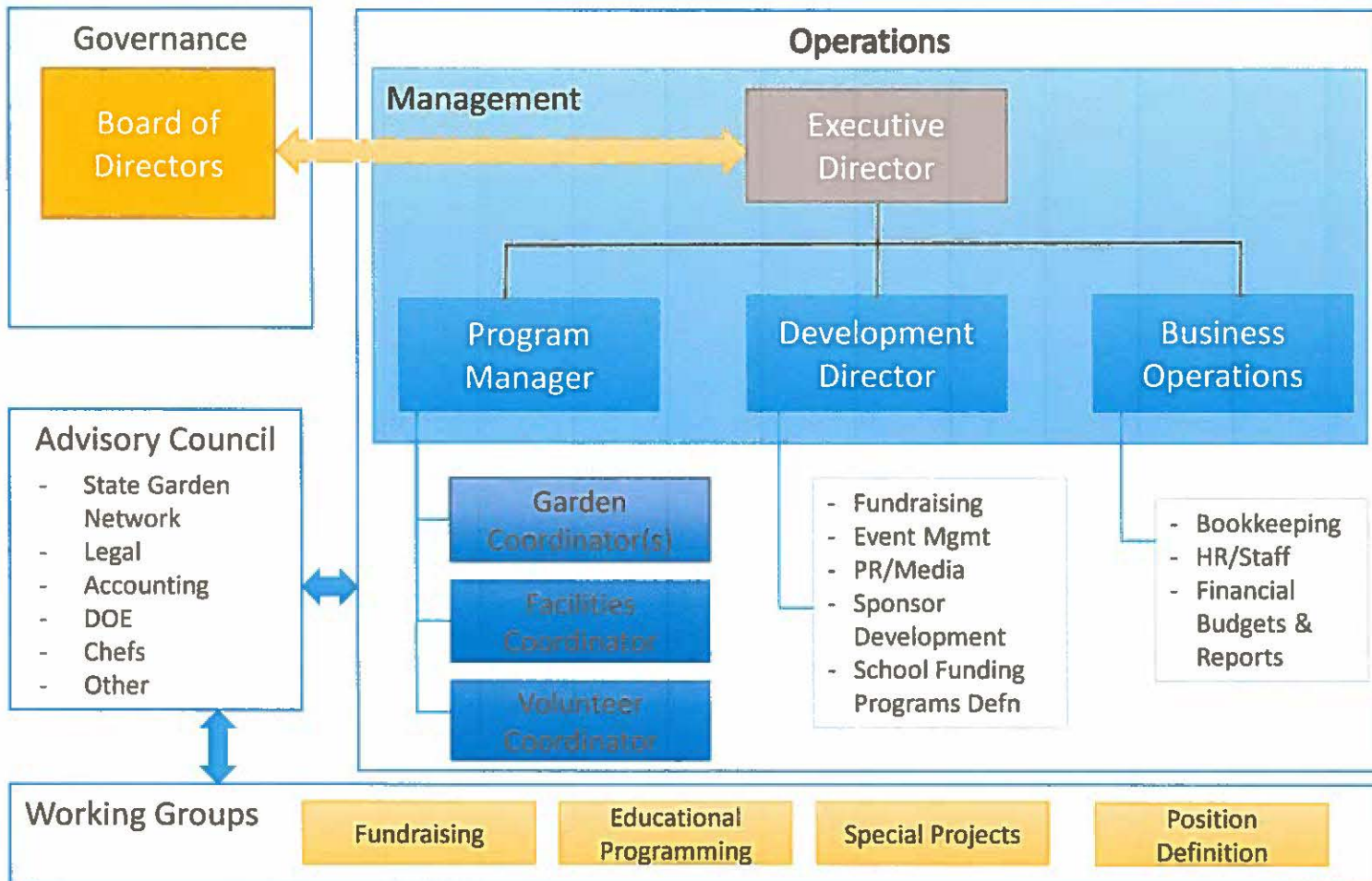
Volunteer Coordinator

The Volunteer Coordinator will be responsible for all aspects of planning, coordinating, and managing the volunteer program for Grow Some Good. They will assist schools in assessing their volunteer needs, and help to identify appropriate volunteers, provide training and orientation, and arrange recognition and other retention activities.

Note: Currently all labor performed on behalf of Grow Some Good is done by independent contractors. A goal of the organization, upon receiving tax-exempt status, is to offer non-contractual employment to current contractors. It is anticipated that this transition could begin during the second half of 2016.

Organization Chart.

Please see next page.



Compensation.

Currently Grow Some Good activities are conducted by contractors, paid on an hourly basis. There are no paid officers, directors or employees. After we attain our organization status, we plan to make most of our core positions employees.

VI. Other

Litigation.

The applicant shall disclose any pending litigation to which they are a party, including the disclosure of any outstanding judgment. If applicable, please explain.

Not applicable.

Licensure or Accreditation.

The applicant shall specify any special qualifications, including but not limited to licensure or accreditation that the applicant possesses relevant to this request.

Not applicable.

Private Educational Institutions.

The applicant shall specify whether the grant will be used to support or benefit a sectarian or non-sectarian private educational institution. Please see Article X, Section 1, of the State Constitution for the relevance of this question.

Not applicable.

Future Sustainability Plan

Once this project has been developed and integrated with Grow Some Good's programs, the majority of these costs can be absorbed within ongoing resources, including unrestricted funds provided by our individual donors, school fundraisers, and proceeds from our annual fundraiser, Taste of School Gardens. If all anticipated funding is not received, the organization will adjust the number of activities developed accordingly.

Certificate of Good Standing (If the Applicant is an Organization)

Certificate is attached.

Budget Narrative

Staff \$46,680

Program Manager

Has overall responsibility for designing and implementing project. Works with school staff and administrators in project design and implementation, and supervises Garden Coordinators' efforts toward this project.

Average 12 hours per week for 50 weeks at \$25/hour = \$15,000

Development Director

Assists Program Manager in designing and developing project activities, and works with school staff to develop fundraising plan and implement project activities at each school site.

Average 4 hours per week for 50 weeks at \$40/hour = \$8,000

Garden Coordinators

Seven Garden Coordinators work directly with schools to implement sustainability activities.

Average of 1.5 hours per week for 38 weeks at \$20/per hour x 7 staff = \$13,680

Volunteer Coordinator

Works with Program Manager and Garden Coordinators to implement volunteer program.

Average 10 hours per week for 50 weeks at \$20/hour = \$10,000

Supplies:

For consumable supplies required for program development, print materials, event and other related misc. expenses. \$3,500

Supplemental Support For Schools

To support school efforts in the transitional phase of the project, contributes to a school's portion of Garden Coordinator costs. \$12,500

Administrative Costs.

Based on 5% administrative rate; \$3,134

Total Program Budget: \$65,814

BUDGET REQUEST BY SOURCE OF FUNDS

Period: July 1, 2016 to June 30, 2017

Applicant: Grow Some Good

BUDGET CATEGORIES	Total State Funds Requested (a)	Total Federal Funds Requested (b)	Total County Funds Requested (c)	Total Private/Other Funds Requested (d)
A. PERSONNEL COST				
1. Salaries				
2. Payroll Taxes & Assessments				
3. Fringe Benefits				
TOTAL PERSONNEL COST				
B. OTHER CURRENT EXPENSES				
1. Airfare, Inter-Island				
2. Insurance				
3. Lease/Rental of Equipment				
4. Lease/Rental of Space				
5. Staff Training				
6. Supplies	3,500			
7. Telecommunication				
8. Utilities				
9. Contract Staff	46,680			
10. Supplemental Support	12,500			
11. Administrative	3,134			
12				
13				
14				
15				
16				
17				
18				
19				
20				
TOTAL OTHER CURRENT EXPENSES	65,814			
C. EQUIPMENT PURCHASES				
D. MOTOR VEHICLE PURCHASES				
E. CAPITAL				
TOTAL (A+B+C+D+E)	65,814			
SOURCES OF FUNDING		Budget Prepared By:		
(a) Total State Funds Requested	65,814	Malia Bohlin	808-268-2431	
(b) Total Federal Funds Requested	0	[REDACTED]	Phone	
(c) Total County Funds Requested	0		1-20-16	
(d) Total Private/Other Funds Requested		Date		
TOTAL BUDGET	65,814	Kathy Becklin, Treasurer, Board of Directors		
		Name and Title (Please type or print)		

BUDGET JUSTIFICATION - PERSONNEL SALARIES AND WAGES

Period: July 1, 2016 to June 30, 2017

Applicant: Grow Some Good

POSITION TITLE	FULL TIME EQUIVALENT	ANNUAL SALARY A	% OF TIME ALLOCATED TO GRANT REQUEST B	TOTAL STATE FUNDS REQUESTED (A x B)
Program Manager	1	\$50,000.00	30.00%	\$ 15,000.00
Garden Coordinators	3.25	\$130,000.00	10.52%	\$ 13,679.90
Development Director	0.75	\$60,000.00	13.33%	\$ 7,999.80
Volunteer Coordinator	1	\$40,000.00	25.00%	\$ 10,000.00
				\$ -
				\$ -
				\$ -
				\$ -
				\$ -
				\$ -
				\$ -
				\$ -
				\$ -
				\$ -
				\$ -
				\$ -
				\$ -
				\$ -
				\$ -
				\$ -
				\$ -
				\$ -
TOTAL:				46,679.70
JUSTIFICATION/COMMENTS:				
All workers are contract employees. Most work less than 40 hours per week. More specific detail is in the Budget Narrative.				

BUDGET JUSTIFICATION - EQUIPMENT AND MOTOR VEHICLES

Period: July 1, 2016 to June 30, 2017

Applicant: Grow Some Good

DESCRIPTION EQUIPMENT	NO. OF ITEMS	COST PER ITEM	TOTAL COST	TOTAL BUDGETED
Not Applicable			\$ -	
			\$ -	
			\$ -	
			\$ -	
			\$ -	
TOTAL:				
JUSTIFICATION/COMMENTS:				

DESCRIPTION OF MOTOR VEHICLE	NO. OF VEHICLES	COST PER VEHICLE	TOTAL COST	TOTAL BUDGETED
			\$ -	
			\$ -	
			\$ -	
			\$ -	
			\$ -	
TOTAL:				
JUSTIFICATION/COMMENTS:				

BUDGET JUSTIFICATION - CAPITAL PROJECT DETAILS

Period: July 1, 2016 to June 30, 2017

Applicant: Grow Some Good

FUNDING AMOUNT REQUESTED						
TOTAL PROJECT COST	ALL SOURCES OF FUNDS RECEIVED IN PRIOR YEARS		STATE FUNDS REQUESTED	OF FUNDS REQUESTED	FUNDING REQUIRED IN SUCCEEDING YEARS	
	FY: 2014-2015	FY: 2015-2016	FY:2016-2017	FY:2016-2017	FY:2017-2018	FY:2018-2019
PLANS						
LAND ACQUISITION						
DESIGN						
CONSTRUCTION						
EQUIPMENT						
TOTAL:						
JUSTIFICATION/COMMENTS: Not Applicable						

GOVERNMENT CONTRACTS AND / OR GRANTS

Applicant: Grow Some Good

Contracts Total: -

	CONTRACT DESCRIPTION	EFFECTIVE DATES	AGENCY	GOVERNMENT ENTITY (U.S. / State / Haw / Hon / Kau / Mau)	CONTRACT VALUE
1	Not Applicable				
2					
3					
4					
5					
6					
7					
8					
9					
10					
11					
12					
13					
14					
15					
16					
17					
18					
19					
20					
21					
22					
23					
24					
25					
26					
27					
28					
29					
30					

**DECLARATION STATEMENT OF
APPLICANTS FOR GRANTS PURSUANT TO
CHAPTER 42F, HAWAI'I REVISED STATUTES**

The undersigned authorized representative of the applicant certifies the following:

- 1) The applicant meets and will comply with all of the following standards for the award of grants pursuant to Section 42F-103, Hawai'i Revised Statutes:
 - a) Is licensed or accredited, in accordance with federal, state, or county statutes, rules, or ordinances, to conduct the activities or provide the services for which a grant is awarded;
 - b) Complies with all applicable federal and state laws prohibiting discrimination against any person on the basis of race, color, national origin, religion, creed, sex, age, sexual orientation, or disability;
 - c) Agrees not to use state funds for entertainment or lobbying activities; and
 - d) Allows the state agency to which funds for the grant were appropriated for expenditure, legislative committees and their staff, and the auditor full access to their records, reports, files, and other related documents and information for purposes of monitoring, measuring the effectiveness, and ensuring the proper expenditure of the grant.

- 2) If the applicant is an organization, the applicant meets the following requirements pursuant to Section 42F-103, Hawai'i Revised Statutes:
 - a) Is incorporated under the laws of the State; and
 - b) Has bylaws or policies that describe the manner in which the activities or services for which a grant is awarded shall be conducted or provided.

- 3) If the applicant is a non-profit organization, it meets the following requirements pursuant to Section 42F-103, Hawai'i Revised Statutes:
 - a) Is determined and designated to be a non-profit organization by the Internal Revenue Service; and
 - b) Has a governing board whose members have no material conflict of interest and serve without compensation.

Pursuant to Section 42F-103, Hawai'i Revised Statutes, for grants used for the acquisition of land, when the organization discontinues the activities or services on the land acquired for which the grant was awarded and disposes of the land in fee simple or by lease, the organization shall negotiate with the expending agency for a lump sum or installment repayment to the State of the amount of the grant used for the acquisition of the land.

Further, the undersigned authorized representative certifies that this statement is true and correct to the best of the applicant's knowledge.

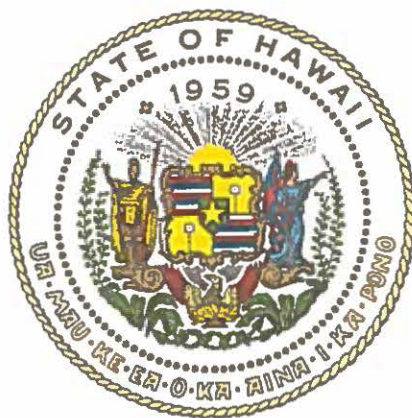
Grow Some Good
(Typed Name of Individual or Organization)


(Signature)

1-18-2016
(Date)

Susan Wyche
(Typed Name)

Chair, Board of Directors
(Title)



Department of Commerce and Consumer Affairs

CERTIFICATE OF GOOD STANDING

I, the undersigned Director of Commerce and Consumer Affairs of the State of Hawaii, do hereby certify that

GROW SOME GOOD

was incorporated under the laws of Hawaii on 11/18/2015 ; that it is an existing nonprofit corporation; and that, as far as the records of this Department reveal, has complied with all of the provisions of the Hawaii Nonprofit Corporations Act, regulating domestic nonprofit corporations.



IN WITNESS WHEREOF, I have hereunto set my hand and affixed the seal of the Department of Commerce and Consumer Affairs, at Honolulu, Hawaii.

Dated: January 08, 2016



Director of Commerce and Consumer Affairs