

House District \_\_\_\_\_

Senate District \_\_\_\_\_

THE TWENTY-EIGHTH LEGISLATURE  
APPLICATION FOR GRANTS  
CHAPTER 42F, HAWAII REVISED STATUTES

Log No: \_\_\_\_\_

For Legislature's Use Only

Type of Grant Request:

GRANT REQUEST - OPERATING

GRANT REQUEST - CAPITAL

"Grant" means an award of state funds by the legislature, by an appropriation to a specified recipient, to support the activities of the recipient and permit the community to benefit from those activities.

"Recipient" means any organization or person receiving a grant.

STATE DEPARTMENT OR AGENCY RELATED TO THIS REQUEST (LEAVE BLANK IF UNKNOWN): \_\_\_\_\_

STATE PROGRAM I.D. NO. (LEAVE BLANK IF UNKNOWN): \_\_\_\_\_

1. APPLICANT INFORMATION:

Legal Name of Requesting Organization or Individual:  
Malama Maunaloa  
Db/a:

Street Address:  
377 Keahole St, Suite E-209, Honolulu HI 96825  
Mailing Address:  
PO Box 240421, Honolulu HI 96824

2. CONTACT PERSON FOR MATTERS INVOLVING THIS APPLICATION:

Name FRAZER MCGILVRAY  
Title Executive Director  
Phone # (808) 395 5050  
Fax # N/A  
E-mail fmcgilvray@malamamaunaloa.org

3. TYPE OF BUSINESS ENTITY:

- NON PROFIT CORPORATION INCORPORATED IN HAWAII
- FOR PROFIT CORPORATION INCORPORATED IN HAWAII
- LIMITED LIABILITY COMPANY
- OTHER
- SOLE PROPRIETORSHIP/INDIVIDUAL

6. DESCRIPTIVE TITLE OF APPLICANT'S REQUEST:

RESTORING AND CONSERVING MAUNALUA BAY THROUGH COMMUNITY KULEANA AND BUILDING THE NEXT GENERATION OF MARINE CONSERVATION PROFESSIONALS.

4. FEDERAL TAX ID #: \_\_\_\_\_

5. STATE TAX ID #: \_\_\_\_\_

7. AMOUNT OF STATE FUNDS REQUESTED:

FISCAL YEAR 2016: \$ 195,835

8. STATUS OF SERVICE DESCRIBED IN THIS REQUEST:

- NEW SERVICE (PRESENTLY DOES NOT EXIST)
- EXISTING SERVICE (PRESENTLY IN OPERATION)

SPECIFY THE AMOUNT BY SOURCES OF FUNDS AVAILABLE AT THE TIME OF THIS REQUEST:

STATE \$ \_\_\_\_\_  
FEDERAL \$ \_\_\_\_\_  
COUNTY \$ \_\_\_\_\_  
PRIVATE/OTHER \$ 264,000

TYPE NAME \_\_\_\_\_ TITLE \_\_\_\_\_

AUTHORIZED SIGNATURE

FRAZER MCGILVRAY - EXECUTIVE DIRECTOR

NAME & TITLE

JANUARY 30, 2015

DATE SIGNED



RECEIVED  
1-30-15

## Application for Grants

### I. Background and Summary

#### 1. A brief description of the applicant's background;

Founded in 2006, Mālama Maunalua (MM) is a community-based non-profit aimed at restoring and conserving Maunalua Bay through community kuleana. To achieve its mission, MM created a unique model that mobilizes large groups of committed volunteers from the Maunalua region, as well as outside community in education and hands-on field restoration in the water; and on land. MM is committed to improving and growing the model in an effort to be more and effective in utilizing community to restore the health of the Bay.

In addition to empowering the community, MM has also built an effective network of partners, advisors and allies in government (e.g. National Oceanographic and Atmospheric Administration (NOAA), Department of Land and Natural Resources, etc.), academia (e.g., University of Hawaii), and conservation (e.g. The Nature Conservancy). In 2014, NOAA designated Maunalua Bay as a special focus area in its proposed National Marine Sanctuary Plans for 2015. Maunalua Bay will benefit from the designation through new oversight and additional scientific research to guide and assess management efforts.

MM's objectives are directed by a partner-expert driven Maunalua Bay Conservation Action Plan (CAP) that was completed in 2008. The CAP prioritized the actions deemed necessary to restore Maunalua Bay: 1) Remove invasive alien algae (IAA), mainly *Avrainvillea amadelpha* or leather mudweed, that outgrows, outcompetes, and smothers native marine plants and coral 2) Reduce urban run-off (sediments and pollutants) that flow into the Bay untreated and fosters the IAA growth and impairs the water quality, and 3) Increase fish populations in the Bay that have declined due to the IAA, impaired water quality, and intense human pressures (commercial and recreational). In turn, MM respectively developed three areas of focus: Huki Program, Pulama Wai Program, and Ho'onui l'a Program.

In 2014, the Board of MM oversaw a formal SWOT (strengths, weaknesses, opportunities and threats) analysis of the organization to ensure that the programs and priorities were still on track to healing the bay. Based on the results from a survey from over 300 invited respondents and two partner and community focus groups, the Board created an updated blue print of action to guide the next 5-10 years. While MM remains committed to reducing the three main threats outlined in the CAP, it was apparent that (1) the Huki Program needs to be scaled-up to increase its effectiveness in reducing the extent of IAA, and (2) a comprehensive marine plan needs to be developed to build a shared vision for healing Maunalua Bay. With strong support from our primary project partners, including NOAA Hawaiian Islands Humpback Whale National Marine Sanctuary, Hawaii Department of Land and Natural Resources (DLNR), The Nature Conservancy, Conservation International and the Harold K.L. Castle Foundation, MM will

oversee and guide the planning process of the marine plan, including the design of the key activities and messaging.

MM is successfully tackling what could be the largest example of marine conservation in an urban area. **The problems are not unique to Maunalua Bay -- the impact of urbanization on our ocean is occurring throughout Oahu and across the State.** MM creates both hope for what can be changed when communities act and a model for how it can be done.

## **2. The goals and objectives related to the request;**

In 2011, MM launched an innovative approach to doing more with less – the Volunteer Leader model, where experienced volunteers are trained and deployed to lead other volunteers on projects. The Volunteer Leader model has enabled MM to hold more Pulama Wai, Huki, and Outreach events, thereby reaching more volunteers, and increasing our effectiveness to restore the health of the Bay. By the end of 2014, MM had grown this model to include over 30 committed Volunteer Leaders, with representation from schools, community groups, businesses, and concerned individuals. Due to the increased capacity, MM has been able to:

- Maintain the regrowth of IAA within select areas of the 28 acres of the near shore area which were cleared in a 2009-2011 through a project funded by NOAA (referred to as the *Great Huki*).
- Annually operate four community restoration events per month, engaging over 3,000 volunteers.
- Launch restoration projects in each of the ten watersheds that flow into the Bay, including routine clean-ups on the three major cemented streams.
- Advance green infrastructure or “best practices” in the region, with the implementation eight rain gardens, three down-spout filters, a storm-drain filter, two large-scale rain-catchment systems, in partnerships with schools, City & County (C&C), private businesses, and residences.
- Receive special recognition or awards from government agencies and Foundations, such as C&C Environmental Services Good Neighbor Award, Scenic Hawaii’s Betty Crocker Award for Landscapes, and Honolulu Museum of Art Green Screen Hawaii Film Festival.
- Support over 20 partner groups in the region, including schools, business, and community groups.
- Annually reach nearly 2,500 students from across Hawaii.

The specific program conservation gains, in 2014, include:

<b>Huki Program</b>	
Total of Huki Community Events	29
Volunteers	1,685
Volunteer Hours	5,139
Students Reached	1,128
Pounds of Algae Removed	80,404

<b>Pulama Wai Program</b>	
Total of Pulama Wai Community Events	33
Volunteers	1,149
Volunteer Hours	2,364
Students Reached	750
Pounds of Dirt and Debris Removed	21,558
Storm Stencils Marked	34

<b>Outreach Events</b>	
Total of Outreach Events	14
Volunteers (recorded as individual who register for MM newsletter)	248
Volunteer Hours	217

Building on this success, Mālama Maunalua is expanding its scope of work to focus on two main goals in 2015. These are:

- Community-led, ecosystem-scale healing for Maunalua Bay through the development and implementation of a comprehensive plan that takes an ecosystem approach in managing all activities and uses of Maunalua Bay; and
- Site model of marine restoration and community engagement through the expansion of the Huki project and the introduction of an inovative Adopt A Huki Plot project.

MM will continue to utilize large groups of committed volunteers, which has enabled MM to have a track record of a consistently high level of accomplishments utilizing a very lean staff. MM will further build the next generation of marine stewards by providing internship and career opportunities.

This grant request will support **one year** of implementing an organizational model that relies heavily on interns, event-based contractors, and volunteers, to supplement MM's small staff. This approach is the only way in which this small non-profit can afford to effectively implement

the number of projects, mauka to makai, that are necessary to restore Maunalua Bay. MM will create critical positions that will help increase community awareness and build significant experience in marine conservation:

- Two positions to be filled by recent college graduates in pursuit of a career in marine conservation in Hawai'i to support: Huki Program and marine resource mapping. The candidate will support MM's programs and be trained on project management, field restoration (e.g., data collection/analysis), community engagement, and marine conservation issues.
- Five short-term Internships to provide programmatic support to be filled by students in high school or college, with preference to individuals in Hawai'i, in pursuit of a career in marine conservation in Hawai'i.
- Fifteen contracted Volunteer Leader positions to be filled by individuals who have a strong interest in marine conservation to run community restoration events on a rotating basis. The Volunteer Leaders will be trained to lead groups of adult and student volunteers in ongoing land-based and large-scale clearing of the invasive alien algae events.

From this team, MM will:

- ❖ Further reach the next generation of marine stewards by engaging 100% of the interested schools in the Maunalua Region in our education and community events.
- ❖ Increase the number of student and community members educated about the threats to the marine environment, the various types of native and invasive marine life in our near shore waters, and possible solutions to the programs (e.g., reducing land-based runoff).
- ❖ Continue the Volunteer Leader model and support of core Huki volunteer leaders.
- ❖ Launch the Adopt a Huki Plot Project to increase our footprint in clearing IAA in the Bay.
- ❖ Facilitate and lead the development of a Bay-wide comprehensive marine plan.
- ❖ Build capacity of marine resource professionals in the State.
- ❖ Share the Volunteer Leader model with other communities across the State.

### 3. The public purpose and need to be served;

Maunalua Bay is situated along the southeastern coast of O'ahu and is one of the five largest bays in the Hawaiian Archipelago (Figure 1). Bounded by two points Kawaihoa and Kupikipikio (also known as Koko Head Point and Black Point, respectively), the bay includes nearly eight miles of shoreline and encompasses 6.5 square miles of ocean waters. Maunalua Bay is characterized by a coral reef system with extensive back reef flat habitat extending from the shoreline out to the reef crest, which historically supported extensive areas of intact coral reef and native marine plants (e.g., algae, sea grass), which was home to a diversity of biologically and culturally important marine species.

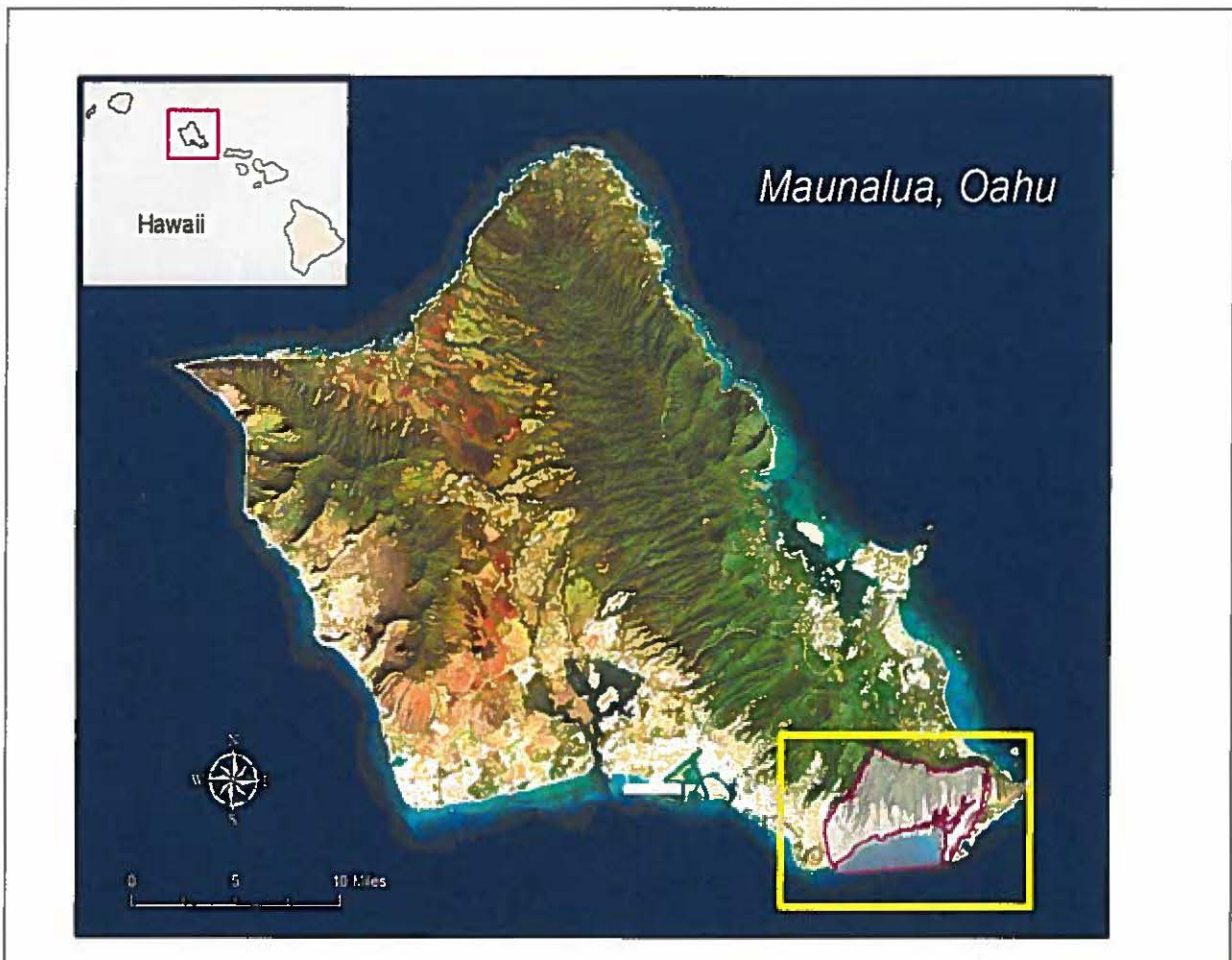


Fig. 1. Map of Oahu

The marine resources in Maunalua Bay, like many areas around Hawai'i, have been steadily declining. Urban development, population increase, and increased fishing pressure during the last 50 years have radically transformed the health and ecology of the Bay. The top three threats to the Bay are polluted runoff and sediment, invasive marine algae, and unsustainable harvesting. Today, the dying Bay is recognized as one of the most heavily impacted and

overfished marine systems in the main Hawaiian Islands. Three areas of the Bay are listed as impaired waters by the State Department of Health pursuant to the Clean Water Act. Maunalua Bay was ranked third by the Hawaii Coral Reef Working Group in its priority site selection process.

Despite its decline, the Bay is an integral part of the local culture and a popular site for recreational and commercial activities including fishing, boating, diving, para-sailing, jet skiing, outrigger canoe paddling and surfing. Both residents and tourists alike engage in these activities. Ninety-four percent of respondents in a recent survey conducted by Mālama Maunalua for its strategic planning purposes stated that the Bay is significant to their quality of life.

**MM's mission to restore and conserve a very fragile and scarce marine environment is essential to the State's economy, our culture and our way of life.** This Grant request will provide MM with the means to restore and conserve Hawaii's precious marine environment which requires sustained, long-term action and that means engaging the community and building the next generation. With the recent studies that have shown MM's restoration work as having a positive impact on reducing sediment input and maintaining IAA regrowth, MM is evermore committed to scaling up our efforts.

The Maunalua community views long-term protection of natural, cultural and historic resources as one of its highest priorities (East Honolulu Sustainable Communities Plan). MM continues to capitalize upon this sentiment, by bringing more volunteers out each year to our restoration events, signing more individuals to our newsletter, and supporting volunteer and internship opportunities. The organization's goal is to provide volunteer opportunities that have meaningful impact on the health of the Bay.

MM admits that undertaking marine conservation in a highly urbanized environment such as Honolulu is a unique and difficult challenge. Yet, there is no other choice than to restore and conserve our near shore areas – including Maunalua Bay - before they are beyond saving.

*As Nainoa Thompson has said, "We only have about a generation to get this right (in Maunalua Bay)."*

**4. Describe the target population to be served; and**

The goal of this project is to restore the health of the marine resources in Maunalua Bay through the creation of a rigorous community based marine resource plan and hands-on community restoration in the Maunalua Region. The target population to be served is the “community” of Hawai‘i. The grant request will focus on “community” in three ways. First, MM will mobilize and educate community (including students) to volunteer at restoration events, and to participate in the new Adopt-A-Huki Plot Project as part of the Huki Program. Second, MM will create internships and jobs that are available to the younger generation of marine conservationists in an effort to provide them opportunities to gain the necessary awareness and skills to further their career. Third, MM will engage community experts, long-time residents, bay users, scientists, private sector representatives and Kapunas in documenting and mapping marine resource knowledge to be incorporated into the Comprehensive Marine Plan.

MM is aware of the value of providing knowledge and opportunities to students to create kuleana to sustain the conservation of marine resources in Hawai‘i. In East Oahu alone there are fourteen public and private elementary, middle, and high schools with more than 6,000 students. In 2014, MM routinely engaged ten of these schools, as well as seven schools from outside the region, thereby involving approximately 2,250 students in conservation activities. In addition, MM facilitated community events for schools and groups visiting from the mainland and worldwide (e.g., Canada, Sweden, Palau, Germany).

While technical and scientific training in the field of marine resource stewardship is available through undergraduate programs in Hawai‘i, such training typically lacks hands-on field work with diverse stakeholders and communities. MM’s internship and career opportunities are designed to fill that gap, training emerging professionals to use a wide-range of marine stewardship skills and work directly with the Maunalua community to manage the Bay’s marine resources, to become more competitive in Hawaii’s conservation job market.

MM continually aims to increase participation of the Maunalua community in the conservation and management of the Bay’s resources. With limited scientific, peer reviewed historical data on the status of aquatic resources in Maunalua Bay, special attention will be paid to document traditional and cultural resource knowledge from kupuna (or Hawaiian elders), long-time Bay users and key scientists. The value of documenting the knowledge will improve MM’s ability to articulate the baseline of the Bay’s health and to create realistic expectations of programmatic success.



**5. Describe the geographic coverage.**

The geographic coverage of the grant activity is the entire Maunalua Region from mauka to makai. MM will work within the 6.5 mi<sup>2</sup> of marine waters, as well as the ten watersheds that feed into the Bay.

MM's community reach, however, extends far beyond the Maunalua Region, including schools and community groups from all over Oahu (e.g., Punahou School, Kamehameha Schools, Farrington High School) and neighbor islands, as well as mainland USA and abroad. For example, in 2014, a group of students from Sweden created a video which featured MM's work in Maunalua Bay. More recently, MM led a group of students from the state of Washington in a community huki at Paiko Lagoon.

## II. Service Summary and Outcomes

### 1. Describe the scope of work, tasks and responsibilities;

**Objective 1. The development of a comprehensive marine plan that takes an ecosystem approach in managing all activities and uses of Maunalua Bay.** The project objectives are: 1) To develop and implement a community-based and partner-supported comprehensive Bay-wide marine management plan using an ecosystem approach in managing activities and uses of Maunalua Bay; 2) To grow and maintain an appropriate level of community participation and meaningful stakeholder engagement throughout the development and implementation of the Bay-wide Management Plan; and, 3) To have a strong, supportive, and actively engaged coalition of relevant government and non-government partners working in support of the development and implementation of the Bay-wide Management Plan. MM and our partners envision this to be a 18-24 month planning and implementation process. MM's goal for the period of this grant award (months 7-18), is to grow and maintain an appropriate level of community participation and meaningful stakeholder engagement within all aspects of the design, planning, and implementation of a Bay-wide Management Plan for Maunalua Bay.

**Outcome:** Substantial work on project design and planning is already underway. From July 2015-June 2016, the anticipated outcomes will be: (1) Creation of a resource library that includes relevant ecological/environmental data, maps, plans, and studies; (2) Creation of a geo-database of ecological data and human uses to be utilized in Geographic Information Systems (GIS); (3) Communications and outreach strategic plan; (4) Communication and outreach materials.

**Objective 2. Site model of marine restoration and community engagement through the expansion of the Huki project and the introduction of an inovative Adopt A Plot project.**

2.1 Conduct 30 large-scale community huki events (invasive algae removals) over the course of the year. MM will ensure that of the 30 events:

- Ten educational hukis, which includes teaching stations to address the three top threats to Maunalua Bay.
- Three hukis that celebrate important national and international honored days, such as International Coastal Cleanup Day, Earth Day, and Invasive Awareness Week.

**Outcome:** An increased number of the community huki that will enable MM to expand the extent of the area that is cleared of algae and/or maintained regrowth. In 2014, an estimated 40 tons of invasive alien algae was removed by volunteers. Over 1,685 community members, including 1,128 students, engaged in restoration and learned kuleana for the ocean. In 2015, MM's objective is to grow the number of community members trained and educated in an effort to share the problems and the solutions for our impaired marine resources.

2.2 Launch the Adopt a Huki Plot Program, whereby volunteers adopt 10x10 m<sup>2</sup> plots to pull IAA and maintain regrowth (following the same monitoring and maintenance protocols used by MM for the community Huki events). This includes:

- The adoption of a minimum of 30 plots by members of the community.
- Ensuring the plots are cleared and maintained in accordance of MM's monitoring and maintenance protocol.
- Regular trainings provided by MM-trained volunteer leaders and staff on maintenance and monitoring protocol (e.g., usage of tools, pull technique, ID invasive versus native algae, data collection).
- Readily available support by MM-trained volunteer leaders and staff, as needed.
- Quarterly and annual assessments will be conducted by MM-trained volunteer leaders and staff to provide updates on the progress of the Project.

**Outcome:** The adoption of a minimum of 30 plots translates into additional acres of bay cleared of IAA in 2015. MM will benefit from the additional data collected to improve the knowledge of IAA regrowth and the level of volunteer commitment required to maintain regrowth.

**Objective 3. Further build the next generation of marine stewards by providing internship and career opportunities.** All individuals will be trained and led by MM staff and senior volunteers with a wide range of managerial, organizational, and marine science experience.

3.1 Hire two coordinator positions to support the Huki Program and the Marine Plan. Program leads will provide training, oversight, and guidance.

**Outcome:** In the first two months of the grant, MM will hire two coordinators who are committed to a career in marine conservation in Hawai'i.

3.2 Hire five short-term internships to provide programmatic support. Program Leads will provide the training, oversight, and guidance. Specifically, they will be trained to: 1) implement specific community projects, 2) monitor the restoration activity, and 3) educate community volunteers in marine conservation, and 4) understand marine conservation issues relevant to Hawai'i.

**Outcome:** Over the duration of this grant, MM will hire five short-term interns who are committed to a career in marine conservation in Hawai'i.

3.3 Identify and train 15 Volunteer Leaders. Program Leads will provide the training in how to engage with and support volunteers, the fundamentals of the *Huki* (invasive algae removal) Program, data collection, and monitoring.

**Outcome:** In the duration of the grant, MM will train 15 individuals from the community who are committed to marine conservation. The training will be on-going over the course of the year.

**Overall the outcomes will directly benefit the fragile marine resource of Maunalua Bay, thereby the greater State of Hawai'i.**

- The removal of IAA and the reduction of sediment will directly benefit the restoration of Maunalua Bay as these outcomes are critical for restoration.
- An established process for community-led maintenance and monitoring of cleared areas supports long-term restoration in the Bay.
- The development of a Comprehensive Marine Plan will guide management priorities and strategic uses for the Bay.
- A proven effective model on how to utilize the community to effectively conserve and restore our near shore waters to share with other organizations, agencies, and communities across the State.
- Increased awareness and skills in a wide population of students in an effort to build the next generation of Hawai'i's residents.
- Creation of marine conservation jobs and training for individuals who might not otherwise have had access to marine environmental education or training.

**2. Provide a projected annual timeline for accomplishing the results or outcomes of the service;**

Table 1 is the projected annual timeline for accomplishing the results described in this grant application.

**Table 1. Project Annual Timeline**

PHASES & TASKS	2015						2016					
	Jul	Aug	Sep	Oct	Nov	Dec	Jan	Feb	Mar	Apr	May	Jun
<b>I Development of a Comprehensive Marine Plan</b>												
<b>1. Create resource library (data, maps, plans, studies)</b>												
- Review existing literature, data, and plans (and integrate new science as it becomes available)	█	█										
- Create and continue to update library	█	█										
<b>2. Create geo-database of ecological data, sources of stress (threats), and human uses</b>												
- Conduct workshops and expert interviews to identify conservation targets, sources of stress (threats), and human uses			█	█	█	█	█	█	█			
- Compile data, maps, and science			█	█	█	█	█	█				
- Peer-review geo-database								█	█			
<b>3. Communication and outreach strategic plan</b>												
- Engage communication team						█	█	█				
- Develop strategic outreach plan								█	█	█		
- Design/create communication, outreach, and education materials								█	█	█		

PHASES & TASKS	2015						2016					
	Jul	Aug	Sep	Oct	Nov	Dec	Jan	Feb	Mar	Apr	May	Jun
- Execute outreach plan												
- Disseminate communication and outreach materials												
4. Share resource library, geo-database, and communication and outreach plan with the community												
- Create new Marine Plan section of website												
- Post/update Marine Plan section of website												
- Create online GIS Map Project												
<b>II. Site Model of Marine Restoration</b>												
1. Community huki events												
- Hold routine monthly community huki events (average 2-3/month)												
2. Adopt a huki Plot Project												
- Provide initial training to cohort (3 x per year, or based on demand)												
- Provide on-going support to adoptees, as needed												
3. Monitoring												
- Pre- and post-each community huki events												
- Pre-adoption of huki plot and semi-annually thereafter												

PHASES & TASKS	2015						2016					
	Jul	Aug	Sep	Oct	Nov	Dec	Jan	Feb	Mar	Apr	May	Jun
<b>III. Further Build the Next Generation of Marine Stewards</b>												
1. Add organizational capacity												
- 2 Assistant coordinators	█	█										
- 5 Short-term interns (on-going)	█	█	█	█	█	█	█	█	█	█	█	█
- 15 Volunteer leaders	█	█					█	█				
2. Review/Evaluations												
- 2 Assistant coordinators							█	█				
- 5 Short-term interns (varied, contingent upon state date)	█	█	█	█	█	█	█	█	█	█	█	█
- 15 Volunteer leaders			█	█	█	█						█

- 3. Describe its quality assurance and evaluation plans for the request. Specify how the applicant plans to monitor, evaluate, and improve their results; and**
- I. **Developing a Comprehensive Marine Plan for Maunalua Bay:** MM will monitor and evaluate this phase of the marine plan in the following ways:
    - The success in completing the aforementioned outcomes: Completion of a resource library; Creation of a geo-database of ecological data and human uses; completion of a communications and outreach strategic plan; and, creation of communication and outreach materials.
    - Evaluation from participating community members and partners regarding the planning process and outcomes.
  
  - II. **Site Model of Marine Restoration:** MM will monitor the huki program and evaluate its effectiveness to restore the near shore reef flat in the follow ways:
    - Community huki events: After each community huki event, MM will provide a survey to the point of contact of the participating volunteer group(s) for feedback on the event, as well as the curriculum and volunteer leaders. Based on feedback, the Huki Program Lead will be able to make any necessary changes to the operation of the community events.
    - Restoration activity: MM has a peer-reviewed maintenance and monitoring protocol, which it will follow to ensure that the restoration activity from a community event and an individual Adopt-A-Huki Plot is effective. After each event, the effectiveness of the event will be evaluated by measuring: (a) extent of identified area cleared of IAA, and (b) coverage of IAA remaining in the area ( $\leq 20\%$ ).
  
  - III. **Further Building the Next Generation of Marine Stewards:** MM will monitor and evaluate the new employees in the following ways:
    - Review periods: Each new hire will be reviewed on a regular basis, with the frequency varying by position (hence length of time with the organization). The reviews process is to provide an opportunity for the Program Leads to evaluate the Coordinators, Interns, and Volunteers, to provide valuable constructive feedback, and to provide a forum where concerns can be addressed. Reviews will take place:
      - Coordinator positions: 2 times: mid-year and final.
      - Short-term interns: 2 times: mid-way through and end of internship.
      - Volunteer Leaders: 5 times: monthly for first 4 months and end of year.



**4. List the measure(s) of effectiveness that will be reported to the State agency through which grant funds are appropriated (the expending agency).**

**I. Site Model of Marine Restoration:**

- **Community Events:**
  - Surveys returned (%)
  - Extent of area cleared (m<sup>2</sup>)
  - Extent of area monitored (m<sup>2</sup>)
  - Number of huki events (#)
  - Number of volunteers attending each huki events (#)
- **Adopt a Plot Project:**
  - Extent of area cleared (m<sup>2</sup>)
  - Extent of area monitored (m<sup>2</sup>)
  - Number of plots adopted (#)
  - Number of volunteers participating in project (#)

**II. Developing a Comprehensive Marine Plan for Maunalua Bay**

- Completion of a resource library
- Creation of a geo-database of ecological data and human uses
- Completion of a communications and outreach strategic plan
- Creation of communication and outreach materials.
- Evaluations from participating community members and partners regarding the planning process and outcomes (# or % returned)

**III. Further Building the Next Generation of Marine Stewards**

- **Number of positions filled:**
  - Two Coordinators (#)
  - Five Short-term Interns (#)
  - 15 Volunteer Leader (#)
- Specified training received (by position)

**III. Financial**

**Budget**

1. The applicant shall submit a budget utilizing the enclosed budget forms as applicable, to detail the cost of the request.

See attached

2. The applicant shall provide its anticipated quarterly funding requests for the fiscal year 2016.

Quarter 1	Quarter 2	Quarter 3	Quarter 4	Total Grant
\$48,958	\$48,958	\$48,958	\$48,959	\$195,835

3. The applicant shall provide a listing of all other sources of funding that they are seeking for fiscal year 2016.

Individual donors and businesses; NOAA; Atherton Foundation; Wallace Alexander Gerbode Foundation; Hawaii Community Foundation; Castle Foundation; Marisla Foundation, The Flora Family Foundation.

4. The applicant shall provide a listing of all state and federal tax credits it has been granted within the prior three years. Additionally, the applicant shall provide a listing of all state and federal tax credits they have applied for or anticipate applying for pertaining to any capital project, if applicable.

None

5. The applicant shall provide a listing of all government contracts and grants it has been and will be receiving for program funding.

2014	City & County Grant In Aid - \$105,656
2012	EPA - \$59,919
2012	Oahu Worklinks - \$9,230
2011	NOAA - \$34,385
2011	Research Corp of University of Hawaii - \$4,200
2009	Dept. Of Health - \$60,000
2009	Hawaii Tourism Authority - \$40,000
2009	Division of Aquatic Resources - \$13,165
2009	NOAA ARRA - \$584,804

6. The applicant shall provide the balance of its unrestricted current assets as of December 31, 2014.

\$264,000

#### IV. Experience and Capability

##### A. Necessary Skills and Experience

- In 2009-2011, The Nature Conservancy and MM were awarded a \$3.4million NOAA grant to implement large-scale removal of invasive alien algae in Maunalua Bay. This was one of approximately 50 awards out of 800 proposals in the country. The project met all of its objectives on time and on budget.
- In 2014 MM was awarded \$105,656.25 from the City and County of Honolulu to help preserve the marine environment of Maunalua Bay. This grant was integral in MM's work in FY15.
- As a result of this project's success, NOAA awarded MM the *Environmental Heroes Award* (copy attached).
- In 2012, MM was awarded the one of only 46 (and the only award in Hawaii) Urban Waters grants by the Environmental Protection Agency to install major demonstrations of best practices run-off reduction methods at Koko Head District Park (in partnership with the City & County of Honolulu Departments of Urban Forestry and Environmental Services) and at Koko Marina Shopping Center. Those projects were recently successfully completed. See attached announcement and map.
- In 2009 - 2010, MM was awarded and implemented a grant from the Hawaii Department of Health to develop a plan for the Wailupe Watershed.
- MM has managed three grants awarded by the Hawaii Community Foundation, six from the Wallace Alexander Gerbode Foundation, three from the Harold K.L. Castle Foundation and three from the Atherton Family Foundation among others.
- MM has more than 5 years of experience in leading community invasive algae removal such as proposed in this Grant Activity.
- The Executive Director was part of a core group to write the Regional Plan of Action for the Coral Triangle Initiative on Coral Reefs, Fisheries and Food Security. The Marine Program Manager wrote the Eco-regional Assessment for the Main Hawaiian Islands.
- As described earlier, MM has developed and is implementing maintenance and monitoring of the 28 acres cleared during the Great Huki ---a unique achievement for a community-based organization.

**B. Facilities**

The applicant shall provide a description of its facilities and demonstrate its adequacy in relation to the request. If facilities are not presently available, describe plans to secure facilities.

MM has had an office in the same location in Hawaii Kai since 2009. It is accessible to field-based volunteers, while providing professional working conditions to office-based staff, interns and volunteers. It is equipped with modern facilities and can accommodate the recruitment of the staff and interns listed previously.

## V. Personnel: Project Organization and Staffing

### A. Proposed Staffing, Staff Qualifications, Supervision and Training

The applicant shall describe the proposed staffing pattern and proposed service capacity appropriate for the viability of the request. The applicant shall provide the qualifications and experience of personnel for the request and shall describe its ability to supervise, train and provide administrative direction relative to the request.

**Frazer McGilvray** is Executive Director of Mālama Maunalua. He will serve as the project's Principal Investigator. Mr. McGilvray has extensive experience and knowledge in conservation and natural resource management across the globe in government and NGO positions. He most recently served as the DLNR Division of Aquatic Resources Administrator. He will be responsible for overseeing the grant and project implementation.

**Dr. Pamela Weiant** is Mālama Maunalua's Marine Program Manager, and will serve as one of the Project Leads for this grant. She has been with Mālama Maunalua since 2012, where she served as the organization's Pulama Wai Program Manager from 2012-2014.

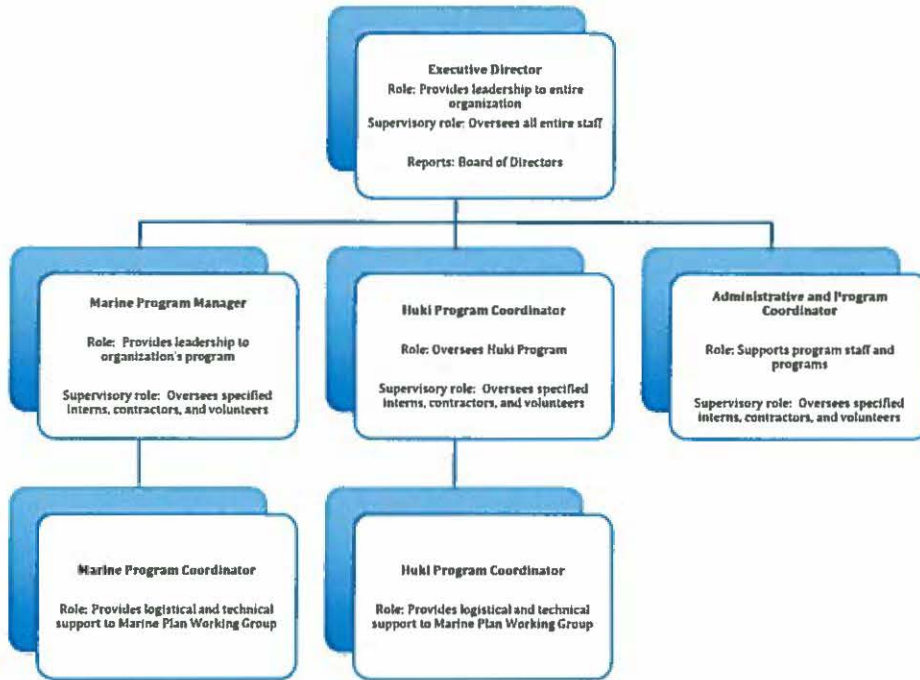
Dr. Weiant has been working in the natural resource conservation field for the past twenty years. Prior to working with Mālama Maunalua, Dr. Weiant worked with The Nature Conservancy of Hawai'i, where she helped to develop the Marine Program, and led the planning effort for the first ecological assessment for the main Hawaiian Islands. She has also worked for University of California - Santa Barbara, The Nature Conservancy of California, Natural Resource Defense Council, and National Biological Service.

Dr. Weiant has worked on community-based marine resource management in many parts of the world, including the Solomon Islands, Mexico, and the mainland USA. Dr. Weiant has a Ph.D. in marine science from University of Santa Barbara, a M.E.S. in Conservation Biology from Yale University, and a B.A. in Geography from Vassar College.

**Colin Neugold** is Mālama Maunalua's Huki Project Lead, and will serve as one of the Project Leaders for this grant. He started with Mālama Maunalua as a Project and Outreach Intern (funded by GIA) in 2014. He is now a full-time employee with the organization and oversees as the Huki Program, including community events and Adopt-A-Plot. Mr. Neugold graduated with a B.S. in Biology and Ecology from Western Connecticut State University.

**B. Organization Chart**

The applicant shall illustrate the position of each staff and line of responsibility/supervision. If the request is part of a large, multi-purpose organization, include an organization chart that illustrates the placement of this request.



**C. Compensation**

The applicant shall provide the annual salaries paid by the applicant to the three highest paid officers, directors, or employees of the organization by position.

Executive Director	\$135,000 p.a.
Marine Project Manager	\$32,000 p.a. (0.6 FTE)
Huki Project Lead	\$29,500 p.a.

**VI. Other**

**A. Litigation**

Not Applicable

**B. Licensure or Accreditation**

MM is a non-profit organization registered under section 501(c)(3) of the Internal Revenue Code.

MM is in possession of a current Special Activity Permit for the removal of Invasive Alien Algae issued by the Board of Land and Natural Resources.

**C. Federal and County Grants**

The applicant shall separately specify the amount of federal and county grants awarded since July 1, 2014.

None.

**D. Private Educational Institutions**

The applicant shall specify whether the grant will be used to support or benefit a sectarian or non-sectarian private educational institution. Please see Article X, Section 1, of the State Constitution for the relevance of this question.

It will not.

**E. Future Sustainability Plan**

The applicant shall provide a plan for sustaining after fiscal year 2015-16 the activity funded by the grant if the grant of this application is:

- (1) Received by the applicant for fiscal year 2015-16, but
- (2) Not received by the applicant thereafter.

We are requesting Grant In Aid to partially fund months 7-18 of a 24 month of implementation of this innovative stewardship and management program. With increased community awareness and proven results of the program, we are confident that we will obtain the funding to continue this critical program. Based on MM's Fund Development Plan we anticipate funding from the



following sources: individual community contributions, community foundations, federal government grants and local businesses.

**F. Certificate of Good Standing (If the Applicant is an Organization)**

If the applicant is an organization, the applicant shall submit one (1) copy of a certificate of good standing from the Director of Commerce and Consumer Affairs that is dated no earlier than December 1, 2014.

Attached

## BUDGET REQUEST BY SOURCE OF FUNDS

Period: July 1, 2015 to June 30, 2016

Applicant: MALAMA MAUNALUA

BUDGET CATEGORIES	Total State Funds Requested (a)	Total Federal Funds Requested (b)	Total County Funds Requested (c)	Total Private/Other Funds Requested (d)
<b>A. PERSONNEL COST</b>				
1. Salaries	109,960	53,400		42,043
2. Payroll Taxes & Assessments	18,044			
3. Fringe Benefits	20,101			26,507
<b>TOTAL PERSONNEL COST</b>	<b>148,105</b>	<b>53,400</b>		<b>68,550</b>
<b>B. OTHER CURRENT EXPENSES</b>				
1. Airfare, Inter-Island				
2. Insurance				
3. Lease/Rental of Truck	9,750			
4. Lease/Rental of Space				
5. Staff Training				
6. Supplies	3,280			4,000
7. Telecommunication				
8. Utilities				
9. Contract - Facilitator	7,200			14,472
10. Contract - Cmnty Huki Ldr (15)	16,500			
11. Contract - Interns (5)	10,000			
12. Contract - Kupuna (2)	1,000			
13				
14				
15				
16				
17				
18				
19				
20				
<b>TOTAL OTHER CURRENT EXPENSES</b>	<b>47,730</b>			<b>18,472</b>
<b>C. EQUIPMENT PURCHASES</b>	<b>0</b>			
<b>D. MOTOR VEHICLE PURCHASES</b>	<b>0</b>			
<b>E. CAPITAL</b>				
<b>TOTAL (A+B+C+D+E)</b>	<b>195,835</b>	<b>53,400</b>	<b>0</b>	<b>87,022</b>
<b>SOURCES OF FUNDING</b>		Budget Prepared By:		
(a) Total State Funds Requested	195,835	Name (Please type or print) _____ Phone _____		
(b) Total Federal Funds Requested	53,400	Signature of Authorized Official _____ Date _____		
(c) Total County Funds Requested	0			
(d) Total Private/Other Funds Requested	87,022			
<b>TOTAL BUDGET</b>	<b>336,257</b>	Name and Title (Please type or print) _____		

**BUDGET JUSTIFICATION - PERSONNEL SALARIES AND WAGES**

Period: July 1, 2015 to June 30, 2016

Applicant: MALAMA MAUNALUA

POSITION TITLE	FULL TIME EQUIVALENT	ANNUAL SALARY A	% OF TIME ALLOCATED TO GRANT REQUEST B	TOTAL STATE FUNDS REQUESTED (A x B)
Executive Director*	1.0	\$135,000.00	10.00%	\$ 13,500.00
Huki Program Lead*	1.0	\$29,500.00	100.00%	\$ 29,500.00
Marine Project Manager*	0.6	\$32,000.00	50.00%	\$ 16,000.00
Administrative and Program Coordinator	0.6	\$18,720.00	50.00%	\$ 9,360.00
Marine Program Coordinator	0.6	\$15,600.00	100.00%	\$ 15,600.00
Huki Program Coordinator	1.0	\$26,000.00	100.00%	\$ 26,000.00
				\$ -
				\$ -
				\$ -
				\$ -
				\$ -
				\$ -
				\$ -
				\$ -
				\$ -
				\$ -
<b>TOTAL:</b>				<b>109,960.00</b>
<b>JUSTIFICATION/COMMENTS:</b>				
* existing positions				

## BUDGET JUSTIFICATION - EQUIPMENT AND MOTOR VEHICLES

Period: July 1, 2015 to June 30, 2016

Applicant: MALAMA MAUNALUA

DESCRIPTION EQUIPMENT	NO. OF ITEMS	COST PER ITEM	TOTAL COST	TOTAL BUDGETED
<b>TOTAL:</b>	<b>0</b>	<b>\$0.00</b>	<b>\$ -</b>	<b>0</b>

JUSTIFICATION/COMMENTS:

DESCRIPTION OF MOTOR VEHICLE	NO. OF VEHICLES	COST PER VEHICLE	TOTAL COST	TOTAL BUDGETED
			\$ -	
			\$ -	
			\$ -	
			\$ -	
			\$ -	
<b>TOTAL:</b>	<b>0</b>	<b>0</b>	<b>\$ -</b>	<b>0</b>

JUSTIFICATION/COMMENTS:

## BUDGET JUSTIFICATION - CAPITAL PROJECT DETAILS

Period: July 1, 2015 to June 30, 2016

Applicant: MALAMA MAUNALUA

FUNDING AMOUNT REQUESTED						
TOTAL PROJECT COST	ALL SOURCES OF FUNDS RECEIVED IN PRIOR YEARS		STATE FUNDS REQUESTED	OF FUNDS REQUESTED	FUNDING REQUIRED IN SUCCEEDING YEARS	
	FY: 2013-2014	FY: 2014-2015	FY:2015-2016	FY:2015-2016	FY:2016-2017	FY:2017-2018
PLANS						
LAND ACQUISITION						
DESIGN						
CONSTRUCTION						
EQUIPMENT						
<b>TOTAL:</b>	<b>0</b>	<b>0</b>	<b>0</b>	<b>0</b>	<b>0</b>	<b>0</b>
<b>JUSTIFICATION/COMMENTS:</b>						

# GOVERNMENT CONTRACTS AND/OR GRANTS

Applicant:  MALAMA MAUNALUA

	CONTRACT DESCRIPTION	EFFECTIVE DATES	AGENCY	GOVERNMENT ENTITY (U.S. / State / Haw / Hon / Kau / Mau )	CONTRACT VALUE
1.	To help preserve the marine environment of Maunalua Bay CT-DCS-1400092	1/29/14 - 5/28/15	Department of Community Services	City & County of Honolulu	\$105,656.25
2.					
3.					
4.					
5.					
6.					
7.					
8.					
9.					
10.					
				TOTAL	\$105,656.25

**DECLARATION STATEMENT OF  
APPLICANTS FOR GRANTS PURSUANT TO  
CHAPTER 42F, HAWAI'I REVISED STATUTES**

The undersigned authorized representative of the applicant certifies the following:

- 1) The applicant meets and will comply with all of the following standards for the award of grants pursuant to Section 42F-103, Hawai'i Revised Statutes:
  - a) Is licensed or accredited, in accordance with federal, state, or county statutes, rules, or ordinances, to conduct the activities or provide the services for which a grant is awarded;
  - b) Complies with all applicable federal and state laws prohibiting discrimination against any person on the basis of race, color, national origin, religion, creed, sex, age, sexual orientation, or disability;
  - c) Agrees not to use state funds for entertainment or lobbying activities; and
  - d) Allows the state agency to which funds for the grant were appropriated for expenditure, legislative committees and their staff, and the auditor full access to their records, reports, files, and other related documents and information for purposes of monitoring, measuring the effectiveness, and ensuring the proper expenditure of the grant.
  
- 2) If the applicant is an organization, the applicant meets the following requirements pursuant to Section 42F-103, Hawai'i Revised Statutes:
  - a) Is incorporated under the laws of the State; and
  - b) Has bylaws or policies that describe the manner in which the activities or services for which a grant is awarded shall be conducted or provided.
  
- 3) If the applicant is a non-profit organization, it meets the following requirements pursuant to Section 42F-103, Hawai'i Revised Statutes:
  - a) Is determined and designated to be a non-profit organization by the Internal Revenue Service; and
  - b) Has a governing board whose members have no material conflict of interest and serve without compensation.

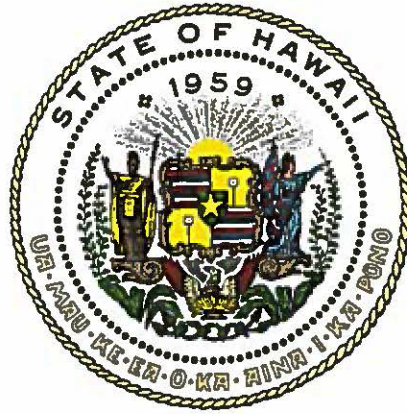
Pursuant to Section 42F-103, Hawai'i Revised Statutes, for grants used for the acquisition of land, when the organization discontinues the activities or services on the land acquired for which the grant was awarded and disposes of the land in fee simple or by lease, the organization shall negotiate with the expending agency for a lump sum or installment repayment to the State of the amount of the grant used for the acquisition of the land.

Further, the undersigned authorized representative certifies that this statement is true and correct to the best of the applicant's knowledge.

Mālama Maunalua  
(Typed Name of Individual or Organization)

 \_\_\_\_\_  
(Signature) January 30, 2015  
(Date)

Frazer McGilvray \_\_\_\_\_  
(Typed Name) Executive Director  
(Title)



## Department of Commerce and Consumer Affairs

### CERTIFICATE OF GOOD STANDING

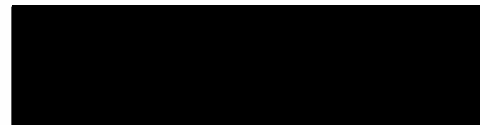
I, the undersigned Director of Commerce and Consumer Affairs of the State of Hawaii, do hereby certify that

**MĀLAMA MAUNALUA**

was incorporated under the laws of Hawaii on 03/31/2010 ; that it is an existing nonprofit corporation; and that, as far as the records of this Department reveal, has complied with all of the provisions of the Hawaii Nonprofit Corporations Act, regulating domestic nonprofit corporations.

IN WITNESS WHEREOF, I have hereunto set my hand and affixed the seal of the Department of Commerce and Consumer Affairs, at Honolulu, Hawaii.

Dated: January 28, 2015



Interim Director of Commerce and Consumer Affairs