

House District Statewide

Senate District Statewide

**THE TWENTY-EIGHTH LEGISLATURE
APPLICATION FOR GRANTS
CHAPTER 42F, HAWAII REVISED STATUTES**

Log No: _____

For Legislature's Use Only

Type of Grant Request:

GRANT REQUEST – OPERATING

GRANT REQUEST – CAPITAL

"Grant" means an award of state funds by the legislature, by an appropriation to a specified recipient, to support the activities of the recipient and permit the community to benefit from those activities.

"Recipient" means any organization or person receiving a grant.

STATE DEPARTMENT OR AGENCY RELATED TO THIS REQUEST (LEAVE BLANK IF UNKNOWN): _____

STATE PROGRAM I.D. NO. (LEAVE BLANK IF UNKNOWN): _____

1. APPLICANT INFORMATION:

Legal Name of Requesting Organization or Individual:
Hawaii International Film Festival

Db/a:

N/A

Street Address: 680 Iwilei Road, Suite 100
Honolulu, Hawaii 96817

Mailing Address: 680 Iwilei Road, Suite 100
Honolulu, Hawaii 96817

2. CONTACT PERSON FOR MATTERS INVOLVING THIS APPLICATION:

Name CHUCK BOLLER

Title Director Emeritus

Phone # (808) 330-7486 _____

Fax # (808) 792-1577 _____

E-mail boller@hiff.org

3. TYPE OF BUSINESS ENTITY:

- NON PROFIT CORPORATION INCORPORATED IN HAWAII
- FOR PROFIT CORPORATION INCORPORATED IN HAWAII
- LIMITED LIABILITY COMPANY
- OTHER
- SOLE PROPRIETORSHIP/INDIVIDUAL

6. DESCRIPTIVE TITLE OF APPLICANT'S REQUEST:

HAWAII FILM STUDENT PROFESSIONAL DEVELOPMENT AND INTERNATIONAL EXCHANGE PROGRAM BETWEEN HAWAII INTERNATIONAL FILM FESTIVAL, UNIVERSITY OF HAWAII ACADEMY FOR CREATIVE MEDIA, SHANGHAI UNIVERSITY (CHINA), SHANGHAI INTERNATIONAL FILM FESTIVAL (CHINA), AND THE CANNES INTERNATIONAL FILM FESTIVAL (FRANCE)

4. FEDERAL TAX ID # _____

5. STATE TAX ID #: _____

7. AMOUNT OF STATE FUNDS REQUESTED:

FISCAL YEAR 2016: \$ 150,000.00

8. STATUS OF SERVICE DESCRIBED IN THIS REQUEST:

- NEW SERVICE (PRESENTLY DOES NOT EXIST)
- EXISTING SERVICE (PRESENTLY IN OPERATION)

SPECIFY THE AMOUNT BY SOURCES OF FUNDS AVAILABLE AT THE TIME OF THIS REQUEST:

STATE \$ 95,000

FEDERAL \$ 0

COUNTY \$ 30,000

PRIVATE/OTHER \$ 582,872

TYPE NAME & TITLE OF AUTHORIZED REPRESENTATIVE


AUTHORIZED SIGNATURE

CHUCK BOLLER, DIRECTOR EMERITUS
NAME & TITLE

JANUARY 30, 2015
DATE SIGNED

 **RECEIVED**
1-30-15 ✓

Application for Grants

If any item is not applicable to the request, the applicant should enter "not applicable".

I. Background and Summary

This section shall clearly and concisely summarize and highlight the contents of the request in such a way as to provide the State Legislature with a broad understanding of the request. Please include the following:

1. A brief description of the applicant's background;

The Hawaii International Film Festival (HIFF) was founded in 1981 to advance understanding and cultural exchange among the peoples of Asia, the Pacific, and North America through the medium of film. Now celebrating its 35th year, HIFF has earned the distinction of being one of the nation's primary sources for the discovery and exhibition of Asian-Pacific feature films and documentaries. The Hawaii International Film Festival's mission is two-fold: to bring the best in international cinema to the people of Hawaii, and to advance understanding and cultural exchange among the peoples of Asia, the Pacific, and North America through the medium of film.

HIFF has solidified its role as both a local cultural institution in Hawaii, and as an international staple in the exhibition and dissemination of Asian and Pacific films. In the last 10 years HIFF has expanded the Festival program dramatically, offering over 200 film programs from approximately 45 countries annually. HIFF also presents comprehensive educational content through its Creative Lab initiative, including panels and workshops in the fields of film and music, mobile technology, and gaming. Since its inception, the Hawaii International Film Festival has benefited more than 1.4 million people with film screenings and its film & media literacy education programs.

In 2005, HIFF inaugurated its SMART (Student Media Art) Exchange between University of Hawaii's then-brand new Academy for Creative Media (ACM) and the Shanghai University School of Film and Television. Celebrating its 10th year, the SMART Exchange brings Shanghai University and ACM students together twice annually—in Honolulu and Shanghai—for joint filmmaking, cultural exchange, professional development workshops, and film screenings.

2. The goals and objectives related to the request;

HIFF is the only American partner of the prestigious Shanghai International Film Festival (SIFF) in China and the only foreign advisor to the annual Beijing International Film Festival. HIFF utilized its partnership and other significant contacts in China, particularly

the Shanghai Media and Entertainment Group (SMEG), to start a student filmmaker exchange between the Academy for Creative Media (ACM) at the University of Hawai'i at Manoa and the Shanghai University School of Film and Television. Completed films are screened at HIFF and at the annual SIFF, resulting in Hawai'i-made student films being screened in China before influential international audiences.

HIFF plans to achieve the following objectives and goals during the *10th Annual SMART Exchange Program*:

- Send between 5-8 Hawaii based filmmakers to participate as official delegates to attend the Shanghai International Film Festival and engage with Shanghai University students in film workshops and film co-productions as part of the SMART Exchange Program.
- Increased professional development and education through international student exchange for Hawaii-based filmmakers.
- Create a network for filmmakers from Hawaii and China to collaborate and support each other's careers.
- Significant international exposure for Hawaii-based films and filmmakers.
- Increased amount of financial support granted to Hawaii's SMART Exchange students.
- Expansion of the SMART Exchange program into additional festivals.
- Significant economic impact through HIFF/SMART Exchange-related visitor spending.

3. The public purpose and need to be served;

Student filmmakers and films from Hawaii are underrepresented in mainstream and international media. In our experience, most filmmaker support programs are either largely financially inaccessible to students, or lack an international scale. As a result, a majority of the independent film work produced in Hawaii lacks a range of distribution and exhibition opportunities.

As a result, HIFF created the SMART Exchange to offer vital international professional development and cross-cultural educational opportunities to Hawaii's filmmakers. Over the past 10 years, filmmakers and producers from China have increased their recruitment of co-productions and purchase of scripts from Hawaii and the larger United States. Furthermore, the SMART program encourages students and the larger delegation from Shanghai to explore the many opportunities available for work, study, and life in Hawaii.

4. Describe the target population to be served; and

The target population for the SMART Exchange program includes the students at ACM and Shanghai University and their peers and families, the larger film industry in Hawaii, as well as the tourism industry. Students and their families have a unique opportunity to showcase their work to the larger professional film industry, while Hawaii's business benefit through hotel accommodations, restaurant services, shopping, and sightseeing activities conducted by the Shanghai delegation to Hawaii.

5. Describe the geographic coverage.

The students in the SMART Exchange produce, write, shoot, and edit their films throughout the state of Hawaii and the city of Shanghai. HIFF presents the SMART Exchange student films in Honolulu as part of the annual Hawaii International Film Festival and in Shanghai as part of the Shanghai International Film Festival. Additionally, press conferences, delegation tours, and receptions take place throughout Shanghai and Honolulu.

II. Service Summary and Outcomes

The Service Summary shall include a detailed discussion of the applicant’s approach to the request. The applicant shall clearly and concisely specify the results, outcomes, and measures of effectiveness from this request. The applicant shall:

1. Describe the scope of work, tasks and responsibilities;

The only films from Hawaii to play in China are through HIFF’s SMART Exchange. SIFF is the largest, most significant film festival in China and many Chinese film industry professionals, press, and officials attend SIFF events, including the SMART Exchange screening. The SIFF officials are among the most significant film industry representatives in all of China, including representatives from the Shanghai Film Studio and the China Film Producers’ Association. The SMART Exchange hosts press conferences, receptions, and delegate tours that provide the opportunity for Hawaii’s student filmmakers to receive critical press and visibility in China.

Activities in Shanghai include the screening of the ACM and Shanghai University films; a press conference and reception, and the co-production of three short films by the students from Hawaii and China. The SMART Exchange students from Hawaii work closely together with their counterparts in Shanghai on three short films, as well as show their own short film. This partnership cultivates intimate professional relationships between peers, and a hands-on educational cross-cultural understanding between students. HIFF additionally provides students and industry delegates from Shanghai the opportunity to meet with film industry professionals and academics in Hawaii, and encourages the Shanghai delegates to explore the range of options for study and work in Hawaii through arranging tour services, receptions, and recreational and dining outings – actively promoting Hawaii as a film production and visitor destination.

ACM students had been paying their individual expenses to participate in the SMART Exchange. As a way of “leveling the field” and supporting Hawaii filmmakers, HIFF has for the last two years contributed \$1,000 to help financially sponsor four of six students from ACM. HIFF does not have the funds to sponsor additional students, so this grant-in-aid would, among other things, allow HIFF to sponsor all the costs for 8 students.

Several leading international film festivals are eager to partner with HIFF to establish SMART Exchange programs between Hawaii’s filmmakers and their local counterparts. HIFF seeks to strategically scale the SMART Exchange program to create additional opportunities for Hawaii-based filmmakers to screen their work and network with industry professionals. Possible festival expansions include the Tokyo International Film Festival, the Beijing International Film Festival (for which HIFF’s Director Emeritus Chuck Boller serves as the only Foreign Advisor), the Munich International Film Festival, and the Cinemalia Philippine Independent Film Festival - the largest and most prestigious film festival in the Philippines. Additionally, in 2015 HIFF will inaugurate an expansion of its international student programs by sending and sponsoring two film students from Hawaii to intern at the American Pavilion at the prestigious Cannes International Film Festival where they will have the opportunity to meet and work with the world’s most renowned filmmakers and industry professionals.

2. Provide a projected annual timeline for accomplishing the results or outcomes of the service;

A call for applications for the SMART Exchange programs is released in winter 2015. SMART exchange filmmakers from Hawaii attend the Shanghai International Film Festival in June 2015, and the Shanghai delegation comes to Hawaii for the Fall Festival in November 2015.

3. Describe its quality assurance and evaluation plans for the request. Specify how the applicant plans to monitor, evaluate, and improve their results; and

HIFF evaluates the SMART Exchange program through assessment surveys and requested testimonials from all participating delegates. The evaluation forms ask participants to rate their experiences on a scale of 1-to-5, with 1 being “poor” and 5 being “excellent.” HIFF’s goal is to achieve average scores of 4.0 or higher. The forms will also ask for suggestions and brief written responses to questions such as “What did you find most valuable about this experience?” This data guides HIFF in improving the program next year. Additionally, at the conclusion of the program HIFF staff meets with SIFF and ACM administration to discuss successes and suggestions for improvement.

4. List the measure(s) of effectiveness that will be reported to the State agency through which grant funds are appropriated (the expending agency). The measure(s) will provide a standard and objective way for the State to assess the program’s achievement or accomplishment. Please note that if the level of appropriation differs from the amount included in this application that the measure(s) of effectiveness will need to be updated and transmitted to the expending agency.

HIFF plans to provide the following metrics to the State Agency that measure the effectiveness of the SMART Exchange program objectives:

- Aggregated SMART Exchange survey data
- SMART Exchange participant written testimonials

- Examples of media and press mentions
- Final HIFF Annual Report
- Written report detailing the 2015 SMART Exchange program

III. Financial

Budget

1. The applicant shall submit a budget utilizing the enclosed budget forms as applicable, to detail the cost of the request.

Please see attached Budget.

2. The applicant shall provide its anticipated quarterly funding requests for the fiscal year 2016.

Quarter 1	Quarter 2	Quarter 3	Quarter 4	Total Grant
\$15,000	\$25,000	\$10,000	\$100,000	\$150,000

3. The applicant shall provide a listing of all other sources of funding that they are seeking for fiscal year 2016.

CORPORATE SPONSORSHIPS

Nippon Golden Network
 Stella Artois
 KBFD
 Bank of Hawaii
 Hawaii National Bank
 Honolulu Cookie Company
 Young's Market Company of Hawaii
 L&L Hawaiian Barbeque
 Hawaiian Airlines, Inc.
 Davis Levin Livingston Grande
 Robbins Meyer Rufo
 Koko Marina
 Halekulani

ORGANIZATION DONATIONS

Academy for Creative Media
 Confucius Institute
 Hawaii Pacific University
 Center for Southeast Asian Studies
 Pacific Islanders in Communications

FOUNDATIONS & GRANTS

Josie & Don Over Memorial Fund
Baciu Cultural Fund
The Vilcek Foundation
Kosasa Foundation
First Hawaiian Bank Foundation
Stupski Family Fund
Hawaii Council for the Humanities
Jhamandas Watumull Fund
Taiwan Academy
Ebert Foundation
McInerney
Roshan Cultural Heritage Institute

GOVERNMENT GRANTS & CONTRACTS

State Gov't Grants & Contracts
HTA
DBEDT
Local Gov't Grants & Contracts
City & County Honolulu

INDIVIDUAL DONATIONS

BOARD DONATIONS

FUNDRAISING EVENTS INCOME

TICKET INCOME

4. The applicant shall provide a listing of all state and federal tax credits it has been granted within the prior three years. Additionally, the applicant shall provide a listing of all state and federal tax credits they have applied for or anticipate applying for pertaining to any capital project, if applicable.

Not applicable

5. The applicant shall provide a listing of all government contracts and grants it has been and will be receiving for program funding.

Not applicable

6. The applicant shall provide the balance of its unrestricted current assets as of December 31, 2014.

HIFF Unrestricted Current Assets as of 12/31/2014: \$140,821.64 (net of which after liabilities is \$41,265.58)

IV. Experience and Capability

A. Necessary Skills and Experience

The applicant shall demonstrate that it has the necessary skills, abilities, knowledge of, and experience relating to the request. State your experience and appropriateness for providing the service proposed in this application. The applicant shall also provide a listing of verifiable experience of related projects or contracts for the most recent three years that are pertinent to the request.

HIFF began in 1981 as a project of the East-West Center at the University of Hawaii at Manoa. Since that time, the Festival has solidified its role as a local cultural institution in Hawaii. In the last 10 years HIFF has expanded the Festival program dramatically, offering over 200 film programs from approximately 45 countries annually, in addition to workshops, seminars, and free education programs. In 2005 HIFF launched the SMART Exchange student program in conjunction with the Academy for Creative Media at the University of Hawaii and Shanghai University/Shanghai International Film Festival, and the program has been a success each year. HIFF welcomes contingents of international guests each year. In 2012, HIFF further expanded to launch the Creative Lab Education Programs, serving nearly 9,000 people in 2014 alone.

B. Facilities

The applicant shall provide a description of its facilities and demonstrate its adequacy in relation to the request. If facilities are not presently available, describe plans to secure facilities.

HIFF's offices are located at the Dole Cannery in downtown Honolulu. The HIFF Fall Festival and the screenings of the SMART Exchange student films take place at the Regal Dole Cannery Stadium 18 Theaters. Additional HIFF screenings, receptions, and program meetings are hosted at various locations on Oahu including the Academy for Creative Media at the University of Hawaii Manoa, the landmark Ward Village IBM courtyard in Kaka'ako, the Modern Honolulu Hotel in Waikiki, Consolidated Theatres Ward Stadium, and Regal Dole Cannery Stadium 18 Theaters. HIFF also has a presence on the islands of Kaua'i and Big Island.

V. Personnel: Project Organization and Staffing

A. Proposed Staffing, Staff Qualifications, Supervision and Training

The applicant shall describe the proposed staffing pattern and proposed service capacity appropriate for the viability of the request. The applicant shall provide the qualifications and experience of personnel for the request and shall describe its ability to supervise, train and provide administrative direction relative to the request.

HIFF's SMART Exchange Program is conducted under the direction of HIFF's Director Emeritus Chuck Boller. Chuck is the founder of the SMART Exchange Program and has accompanied the delegates to Shanghai since 2005. He will be the overall Project Coordinator and will oversee the SMART Exchange Program and student internship at the Cannes Film Festival. Executive Director Robert Lambeth oversees the Hawaii International Film Festivals, both Spring and Fall, as well as the larger HIFF educational initiatives and the Creative Lab at HIFF. HIFF's principal staff supporting the SMART Exchange Program consists of Associate Director of Programming, Anna Page, who coordinates HIFF's educational initiatives; Assistant Programmer Minette Ferrer who coordinates the Student Showcases; Director of Sponsorships and Events Grace Jo who will coordinate press and receptions for the program; Programming Director Anderson Le who supervises in the production of the participant projects; and Director of Development Beckie Stocchetti will manage all program evaluations and reporting. Additional support for the program includes ACM and SU teacher-advisors who travel with the student delegations, translators/interpreters who are experts in Chinese and English, Project Assistants who work with travel groups, and Marketing, Press and PR seasonal staff.

B. Organization Chart

The applicant shall illustrate the position of each staff and line of responsibility/supervision. If the request is part of a large, multi-purpose organization, include an organization chart that illustrates the placement of this request.

Please see attached Organization Chart.

C. Compensation

The applicant shall provide the annual salaries paid by the applicant to the three highest paid officers, directors, or employees of the organization by position.

HIFF Executive Director - \$70,000

HIFF Director of Programming - \$52,000
HIFF Director Emeritus and Project Coordinator- \$45,000

VI. Other

A. Litigation

The applicant shall disclose any pending litigation to which they are a party, including the disclosure of any outstanding judgement. If applicable, please explain.

Not Applicable

B. Licensure or Accreditation

The applicant shall specify any special qualifications, including but not limited to licensure or accreditation that the applicant possesses relevant to this request.

In 2005 HIFF launched the SMART Exchange student program in conjunction with the Academy for Creative Media at the University of Hawaii and Shanghai University/Shanghai International Film Festival, and the program has been a success each year. HIFF has worked directly with the American Pavilion at Cannes for the last several years and has the contacts and experience to make the HIFF has the experience and proven expertise to administer this grant.

C. Federal and County Grants

The applicant shall separately specify the amount of federal and county grants awarded since July 1, 2014.

City and County of Honolulu - \$20,000

County of Kauai - \$5,000

D. Private Educational Institutions

The applicant shall specify whether the grant will be used to support or benefit a sectarian or non-sectarian private educational institution. Please see Article X, Section 1, of the State Constitution for the relevance of this question.

Not Applicable

E. Future Sustainability Plan

The applicant shall provide a plan for sustaining after fiscal year 2015-16 the activity funded by the grant if the grant of this application is:

- (1) Received by the applicant for fiscal year 2015-16, but
- (2) Not received by the applicant thereafter.

The receipt of the grant of this application will allow HIFF to strengthen and expand its SMART Exchange Program in the significant 10th Anniversary year of the Program. This is an important aspect of the Program and will strongly indicate the importance and success of the program both in China and throughout the world. The expansion of HIFF's international student exchange and enrichment programs adds to the indicators of the strength and longevity of both programs. These symbols of success expand the publicity and outreach for the programs and attract both financial and in-kind supporters to them.

The press conference/reception in Shanghai and the HIFF staff activities in both Shanghai and Cannes will be geared toward attracting future support for both programs. Corporate, individual, and government sponsorships will be continually sought in both Hawaii, China, and at Cannes.

Should the ultimate survival of the programs ever be challenged, they will be, if necessary, dramatically cut back but hopefully never eliminated.

F. Certificate of Good Standing (If the Applicant is an Organization)

If the applicant is an organization, the applicant shall submit one (1) copy of a certificate of good standing from the Director of Commerce and Consumer Affairs that is dated no earlier than December 1, 2014.

Please see attached Certificate.

ATTACHMENTS

BUDGET

BUDGET JUSTIFICATION – PERSONNEL SALARIES AND WAGES

ORGANIZATION CHART

CERTIFICATE OF GOOD STANDING

DECLARATION STATEMENT OF APPLICANTS FOR GRANTS

BUDGET REQUEST BY SOURCE OF FUNDS

Period: July 1, 2015 to June 30, 2016

Applicant: Hawaii International Film Festival

BUDGET CATEGORIES	Total State Funds Requested (a)	Total Federal Funds Requested (b)	Total County Funds Requested (c)	Total Private/Other Funds Requested (d)
A. PERSONNEL COST				
1. Salaries	35,800			
2. Payroll Taxes & Assessments	4,200			
3. Fringe Benefits				
TOTAL PERSONNEL COST	40,000			
B. OTHER CURRENT EXPENSES				
1. R/T Airfare HI - China for 8 student delegates + 4 staff	20,000			
2. Student housing in Shanghai	17,900			
3. 8 ACM student stipends in Shanghai	8,000			
4. Staff housing in Shanghai	4,000			
5. Shangai Transportation/Hospitality/Meals	5,500			
6. Press Conference/Reception in Shanghai	10,500			
7. R/T Airfare HI - Cannes for 2 students + 2 staff	7,600			
8. Cannes Pavilion student fees	6,000			
9. 2 student stipends in Cannes	2,000			
10. Staff housing in Cannes	4,000			
11. Cannes Transportation/Meals/Hospitality	2,500			
12. Expenses for Shanghai delegates in Hawaii	4,500			
13. Transportation for Shanghai delegates in HI	750			
14. Insurance	1,500			
15. Lease/Rental of Equipment	3,250			
16. Lease/Rental of Space	3,500			
17. Staff Training	1,000			
18. Supplies	2,000			
19. Marketing/outreach	3,500			
20. Materials design, printing, photocopying	2,000			
TOTAL OTHER CURRENT EXPENSES	110,000			
C. EQUIPMENT PURCHASES	N/A			
D. MOTOR VEHICLE PURCHASES	N/A			
E. CAPITAL	N/A			
TOTAL (A+B+C+D+E)	150,000			
SOURCES OF FUNDING		Budget Prepared By:		
(a) Total State Funds Requested	150,000	Chuck Boller (808) 330-7488		
(b) Total Federal Funds Requested		Name (Please type or print) <u>[Signature]</u> Phone		
(c) Total County Funds Requested		[Redacted] 1/30/15 Date		
(d) Total Private/Other Funds Requested		Signature of Authorized Official		
TOTAL BUDGET	150,000	Chuck Boller - Director Emeritus		
		Name and Title (Please type or print)		

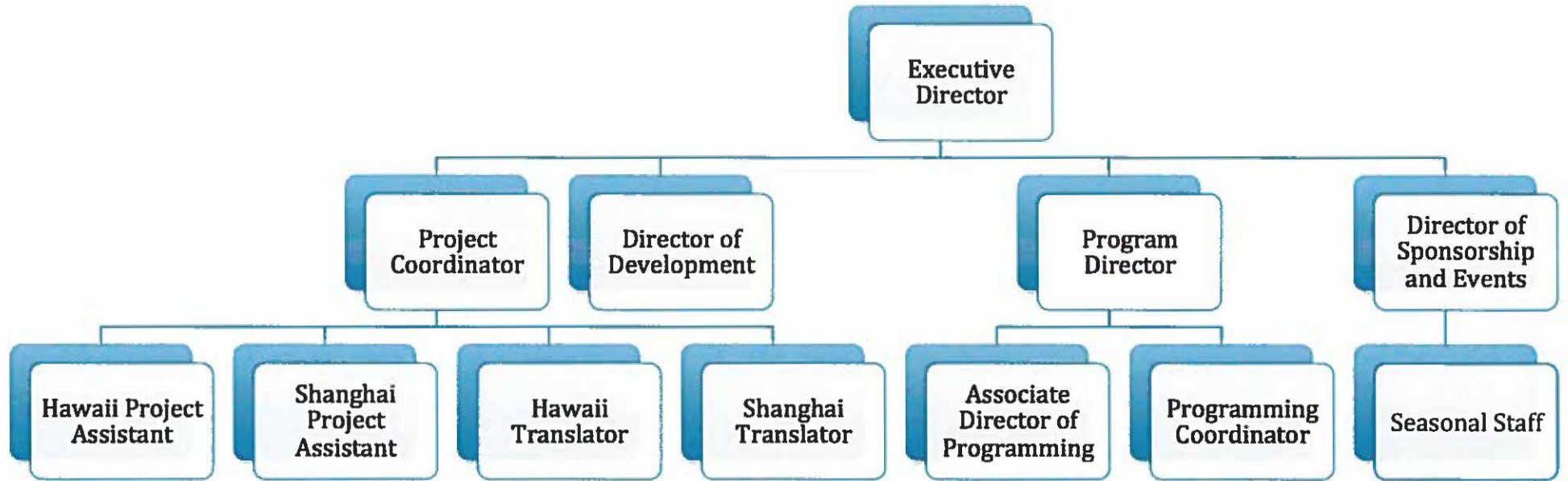
BUDGET JUSTIFICATION - PERSONNEL SALARIES AND WAGES

Period: July 1, 2015 to June 30, 2016

Applicant: Hawaii International Film Festival

POSITION TITLE	FULL TIME EQUIVALENT	ANNUAL SALARY A	% OF TIME ALLOCATED TO GRANT REQUEST B	TOTAL STATE FUNDS REQUESTED (A x B)
Director Emeritus/Project Coordinator		\$45,000.00	17.70%	\$ 8,000.00
Executive Director		\$70,000.00	7.00%	\$ 5,000.00
Director of Development		\$16,000.00	20.00%	\$ 3,200.00
Programming Director		\$52,000.00	5.70%	\$ 3,000.00
Associate Director of Programming		\$42,000.00	5.00%	\$ 2,100.00
Program Coordinator		\$32,000.00	3.00%	\$ 1,000.00
Director of Sponsorships and Events		\$30,000.00	5.00%	\$ 1,500.00
Translator (Mandarin/English) - Hawaii		Contract	100.00%	\$ 1,000.00
Translator (Mandarin/English) - Shanghai		Contract	100.00%	\$ 1,000.00
Project Assistant - Hawaii		Contract	100.00%	\$ 5,000.00
Project Assistant - Shanghai		Contract	100.00%	\$ 3,000.00
Seasonal + Event Staff (Marketing, Press/Pr, etc)		Contract	100.00%	\$ 2,000.00
				\$ -
				\$ -
TOTAL:				35,800.00
JUSTIFICATION/COMMENTS:				

Organizational Chart





Department of Commerce and Consumer Affairs

CERTIFICATE OF GOOD STANDING

I, the undersigned Director of Commerce and Consumer Affairs of the State of Hawaii, do hereby certify that

HAWAII INTERNATIONAL FILM FESTIVAL, INC.

was incorporated under the laws of the State of Hawaii on 02/22/1990 ; that it is an existing nonprofit corporation; and that, as far as the records of this Department reveal, has complied with all of the provisions of the Hawaii Nonprofit Corporations Act, regulating domestic nonprofit corporations.

IN WITNESS WHEREOF, I have hereunto set my hand and affixed the seal of the Department of Commerce and Consumer Affairs, at Honolulu, Hawaii.

Dated: January 30, 2015

Catherine P. Awa-Cole

Director of Commerce and Consumer Affairs



**DECLARATION STATEMENT OF
APPLICANTS FOR GRANTS PURSUANT TO
CHAPTER 42F, HAWAII REVISIED STATUTES**

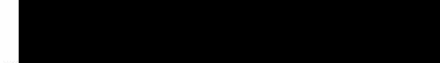
The undersigned authorized representative of the applicant certifies the following:

- 1) The applicant meets and will comply with all of the following standards for the award of grants pursuant to Section 42F-103, Hawaii Revised Statutes:
 - a) Is licensed or accredited, in accordance with federal, state, or county statutes, rules, or ordinances, to conduct the activities or provide the services for which a grant is awarded;
 - b) Complies with all applicable federal and state laws prohibiting discrimination against any person on the basis of race, color, national origin, religion, creed, sex, age, sexual orientation, or disability;
 - c) Agrees not to use state funds for entertainment or lobbying activities; and
 - d) Allows the state agency to which funds for the grant were appropriated for expenditure, legislative committees and their staff, and the auditor full access to their records, reports, files, and other related documents and information for purposes of monitoring, measuring the effectiveness, and ensuring the proper expenditure of the grant.
- 2) If the applicant is an organization, the applicant meets the following requirements pursuant to Section 42F-103, Hawaii Revised Statutes:
 - a) Is incorporated under the laws of the State; and
 - b) Has bylaws or policies that describe the manner in which the activities or services for which a grant is awarded shall be conducted or provided.
- 3) If the applicant is a non-profit organization, it meets the following requirements pursuant to Section 42F-103, Hawaii Revised Statutes:
 - a) Is determined and designated to be a non-profit organization by the Internal Revenue Service; and
 - b) Has a governing board whose members have no material conflict of interest and serve without compensation.

Pursuant to Section 42F-103, Hawaii Revised Statutes, for grants used for the acquisition of land, when the organization discontinues the activities or services on the land acquired for which the grant was awarded and disposes of the land in fee simple or by lease, the organization shall negotiate with the expending agency for a lump sum or installment repayment to the State of the amount of the grant used for the acquisition of the land.

Further, the undersigned authorized representative certifies that this statement is true and correct to the best of the applicant's knowledge.

Hawaii International Film Festival
(Typed Name of Individual or Organization)



(Signature)

January 30, 2015

(Date)

Chuck Boller
(Typed Name)

Director Emeritus

(Title)