

House District \_\_\_\_\_  
Senate District \_\_\_\_\_

THE TWENTY-EIGHTH LEGISLATURE  
APPLICATION FOR GRANTS  
CHAPTER 42F, HAWAII REVISED STATUTES

Log No:

For Legislature's Use Only

Type of Grant Request:

GRANT REQUEST - OPERATING

GRANT REQUEST - CAPITAL

"Grant" means an award of state funds by the legislature, by an appropriation to a specified recipient, to support the activities of the recipient and permit the community to benefit from those activities.

"Recipient" means any organization or person receiving a grant.

STATE DEPARTMENT OR AGENCY RELATED TO THIS REQUEST (LEAVE BLANK IF UNKNOWN):

STATE PROGRAM I.D. NO. (LEAVE BLANK IF UNKNOWN): \_\_\_\_\_

1. APPLICANT INFORMATION:

Legal Name of Requesting Organization or Individual: Hawai'i Alliance for Arts Education

Dba: Hawai'i Arts Alliance

Street Address: 1040 Richards Street, Honolulu, Hawai'i 96813

Mailing Address: P.O. Box 3948, Honolulu Hawai'i 96812

2. CONTACT PERSON FOR MATTERS INVOLVING THIS APPLICATION:

Name AARON KIBOTA

Title Associate Director

Phone # (808) 533-2787

Fax # (808) 526-9040

E-mail aaron@hawaiiartsalliance.org

3. TYPE OF BUSINESS ENTITY:

- NON PROFIT CORPORATION INCORPORATED IN HAWAII  
 FOR PROFIT CORPORATION INCORPORATED IN HAWAII  
 LIMITED LIABILITY COMPANY  
 OTHER  
 SOLE PROPRIETORSHIP/INDIVIDUAL

6. DESCRIPTIVE TITLE OF APPLICANT'S REQUEST:

During the first year (2013), Hawai'i Arts Alliance began building a STEAM model that could benefit students in all districts. The best way to lay the foundation for a program that can evolve and become part of the established educational system is to increase professional development. The programs in 2015 and 2016 will continue to focus on working with the teachers to increase understanding and knowledge of the STEAM model.

4. FEDERAL TAX ID # \_\_\_\_\_

5. STATE TAX ID # \_\_\_\_\_

7. AMOUNT OF STATE FUNDS REQUESTED:

FISCAL YEAR 2016: \$ 460,028

8. STATUS OF SERVICE DESCRIBED IN THIS REQUEST:

- NEW SERVICE (PRESENTLY DOES NOT EXIST)  
 EXISTING SERVICE (PRESENTLY IN OPERATION)

SPECIFY THE AMOUNT BY SOURCES OF FUNDS AVAILABLE AT THE TIME OF THIS REQUEST:

STATE \$ \_\_\_\_\_  
FEDERAL \$ 75,000  
COUNTY \$ \_\_\_\_\_  
PRIVATE/OTHER \$ 25,800

TYPE NAME & TITLE OF AUTHORIZED REPRESENTATIVE:

AUTHORIZED SIGNATURE

MARILYN CRISTOFORI, CHIEF EXECUTIVE OFFICER  
NAME & TITLE

DATE SIGNED

JAN. 30, 2015



RECEIVED  
1-30-15

Hawai'i Alliance for Arts Education  
dba Hawai'i Arts Alliance

The Twenty-Sixth Legislature  
Hawai'i State Legislature  
Application for Grants and Subsidies  
Chapter 42F, Hawai'i Revised Statutes

## I. BACKGROUND and SUMMARY

### 1. Brief Description of Applicant's Background

The mission of the Hawai'i Arts Alliance is to build creativity through advocacy, community and education for all the arts. Founded in 1980, the Alliance is the statewide non-profit and member of the national education network of the John F. Kennedy Center for Performing Arts, and State Captain for Americans for the Arts (AFTA), the national arts advocacy organization. We support all the arts, while our members (721 individuals and 145 organizations) represent the diverse, distinct disciplines. Over the past 35 years, the Alliance has led statewide conferences, held professional development for artists and teachers, model arts programs in schools and communities, annual awards to Arts Excellence schools, and was the founder of The ARTS at Marks Garage to revitalize community in downtown Honolulu. Marks became independent in 2012.

As part of our **advocacy** work in the role of State Captain for AFTA, we target 13,000+ people through our Arts Alliance Action Network with current updates on national and local arts legislation and policies. In 2010 we produced the Hawai'i section of the national AFTA Arts and Economic Prosperity Report with support from DBEDT.

Our **community** programs impact 75,000+ people. Community support includes; founding and oversight of The ARTS at Marks Garage (2001-2012); fiscal sponsorship of emerging groups (Youth Speaks Hawai'i, POW! WOW! Hawai'i, Playbuilders, Laughtrack Theatre); wor with the Girl Scouts of Hawai'i, Wonder of Water program, and the successful grant challenge program for the nine Performing Arts Learning Centers across the state.

As part of ARTS FIRST, our **education** programs annually benefit 550 teachers, 100 artists and 20,000+ students through the annual Teacher Institute, Artists-in-the-Schools, ArtBento@HiSAM, Teaching Artists Workshops, Arts Excellence School Awards, and Performing Arts Learning Centers throughout the State.

The Alliance is one of the six ARTS FIRST Partners<sup>1</sup> and works closely with the other Partners to attract outside funding and provide services that the other entities would otherwise be unable to offer. Over the past ten years, state funds were just over \$4.2 million, and the Alliance has been key to helping leverage those funds to attract more than \$13 million in federal and private funds.

Among the ARTS FIRST (AF) accomplishments has been the creation of a standards-based, arts-integrated curriculum available to our public schools. Other substantial progress has been made in professional development for teachers, principals and artists, the development of qualified teaching artists, and technological access to the best practices in standards-based, arts-integrated curriculum linking the arts with other core academic subjects.

## **2. Goals and Objectives**

Support from the State of Hawai'i Legislature is vital to the continued impact of the arts as part of education reform and improvement for our state. The ARTS FIRST Strategic Plan FY 2013–2018, signed by all the Partners, is available upon request. The mission is to *work collaboratively to create conditions and culture that promise a comprehensive high-quality arts education – learning in, about and through the arts – for every student in Hawai'i*. There are four goals in the plan, and the following two are the focus of this request.

- The Partners will conduct and disseminate research on the scope, impact and pertinent topics of arts education in Hawai'i.
- Pre-service teachers, in-service teachers, and teaching artists have access to ongoing and high-quality professional learning opportunities.

Objectives for the next year are:

- Approximately 80 teachers will learn how to facilitate and integrate arts strategies with science curriculum at the ARTS FIRST Institute in June 2015, with 100% of teacher participants implementing STEAM curriculum in the classroom during fall 2015.
- Institute teachers will create and implement a total of 80 unit plans or 240 integrated arts/science lessons in the classroom, which will be shared, collected, and evaluated at the December portfolio sharing session.
- 4,000 students will have opportunities to explore and make connections to learning through creativity and inquiry in classrooms taught by participating teachers. This impact is cumulative as it is expected that the participating teachers will continue to

---

<sup>1</sup> ACT 306/01 mandated the ARTS FIRST Partners to include: State Department of Education, Hawai'i Association of Independent Schools, University of Hawai'i at Manoa, College of Education, UHM College of Arts and Humanities, State Foundation on Culture and the Arts, and Hawai'i Arts Alliance. Two Affiliates are Maui Arts & Cultural Center and Honolulu Theatre for Youth.

modify, hone, and implement this integrated curriculum with each new class they teach.

### **3. Public Purpose and Need to be Served**

Significant national research<sup>2</sup> shows compelling evidence that arts education strongly impacts ALL learning, academic and social, irrespective of socio-economic status. Students in arts-rich schools earn better grades and scores, are less likely to leave school, watch less television, have a more positive self-concept and are more involved in community service. This research clearly demonstrates that arts education is evolving from an enhancement that can be eliminated without really hurting academic success to understanding how the arts can form an integral conceptual underpinning for traditional academic learning and help students acquire long-term cognitive skills. Arts link cognitive growth to social, emotional and academic development and prepare students for work in an economy that will demand high-order skills. Eric Jensen, world-renowned educator/brain researcher maintains that arts are essential to the core curriculum of every school. Other researchers found that "those who study arts outperform 'arts-poor' students by virtually every measure: grades, test scores, attitudes and behavior irrespective of socioeconomic status." The following remark summarizes both public purpose and essential need.

*Arts are central to a civil society. Kids who create don't destroy. Arts education needs to be in the elementary and secondary schools through the core curriculum: in the home to foster lifelong learning; at the university level to develop excellence among future teachers and the future job force. We will all benefit from making the arts a core part of the educational system. Our future depends on it. We are moving very, very fast, and the future will be here before we know it.*<sup>3</sup>

The United States is no longer the most innovative economy in the world. The U.S. has slipped to 4<sup>th</sup> according to the most recent World Economic Forum rankings and to 6<sup>th</sup> as ranked by the Information Technology & Innovation Foundation. Nationally, Hawai'i ranks between 13<sup>th</sup> and 15<sup>th</sup> so all the issues about innovation clearly apply to our state. Science and technology are primary drivers in the global economy, but many advocates are convinced that the emphasis on STEM education is missing a key ingredient – the Arts.

A study by IBM of 1,500 CEOs worldwide (Capitalizing on Complexity) identified creativity as the most valuable quality needed for success in the future global economy. The 2012

---

<sup>2</sup> Champions for Change: The Impact of the Arts on Learning, Arts Education Partnership (AEP), 1999  
Critical Links: Learning in the Arts - Student Academic and Social Development, AEP, 2001  
Critical Evidence: How the ARTS Benefit Student Achievement, Sandra Ruppert, 2006  
The Arts and School Reform, Annenberg Institute, 2003  
Arts Education Partnerships, Rand Report, 2004  
Putting the Arts in the Picture, Reframing Education 21<sup>st</sup> century, ed. Nick Rabkin, Robin Redmond, 2006  
The Artistic Edge, Lisa Phillips, 2012

<sup>3</sup> Concluding remarks: Nancy Hanks Lecture on Arts and Public Policy at the Kennedy Center by Terry Semel, immediate past Chair and Co-CEO Warner Bros. and Warner Music Group. March 20, 2000

Ready to Innovate report from the Conference Board concludes that employers seek creativity when they hire, and they believe that only the arts can fully develop creativity.

Research shows that, with collaboration, teachers are able to integrate creative, innovative practices into learning linking arts and other academics such as science, technology, engineering, and math. The value of art and design to innovation is clear: artists and designers humanize technology, making it understandable and capable of bringing about societal change. Economic progress and breakthrough innovation comes from adding art and design to Science, Technology, Engineering and Math education:

STEM + Arts = STEAM. The tools and methods of a studio-based education offer new models for creative problem solving, flexible thinking and risk-taking that are needed in today's complex and dynamic world. Innovation: STEM enables it. But Art drives it.

#### **4. Target Population to be Served**

The target populations are educators and artists all of whom influence and reach our students who will be the beneficiaries. The project will reach 80 generalist elementary level teachers. Participation of these teachers will affect approximately 4,000 students during SY2015. This impact is cumulative as it is expected that these teachers will apply the arts knowledge and skills with each new class they teach. Due to decreased funding, arts specialists are not at the elementary level on a regular, full-time basis in Hawaii public schools. Data from a 2010 ARTS FIRST survey to 204 public and public charter school principals (38% response rate) confirms this. 50-70% of the time, it is the classroom teacher who provides arts instruction. 50-90% of teachers sometimes or never integrate the arts with other core subjects. It is critical that elementary teachers receive training in arts integration to provide effective creative learning opportunities for students.

#### **5. Geographic Coverage**

ARTS FIRST Partners reach statewide. Hawai'i Arts Alliance is an umbrella, statewide organization with over 100 organizational members. When considering the membership of these organizations, the estimated combined membership is over 40,000. The geographic coverage reaches all islands and serves communities from downtown Honolulu to Hana, to Hanalei, to Volcano and connects with every school in the state.

## **II. SERVICE SUMMARY and OUTCOMES**

### **1. Scope of Work, Tasks and Responsibilities**

The STEAM model of teaching and learning is a problem-solving approach that incorporates science, technology, engineering, arts, and mathematics. As observed by noted researcher and professor at Stanford University, Shirley Brice Heath, "Art is science at work . . . arts and science exist within the arc that runs from initial planning and preparation through practice and development to completions and meaningful sense." For the past two years, Hawai'i Arts Alliance has developed a STEAM model with an emphasis

in science. These two disciplines share commonalities: creating/experimenting, performing/communicating, responding/observing and inferring. The Next Generation Science Standards provide opportunities to create deeper and richer intersections with the arts so that teachers and students can have strategies and tools to engage in understanding core ideas as well as making connections across disciplinary content.

The ARTS FIRST STEAM Institute 2015 will take place June 9-12, 2015 at Aiea Elementary School on the island of Oahu. The four-day Institute will offer models for standards-based arts+science integrated curriculum. Eighty elementary teachers statewide (Oahu, Kauai, Maui, Molokai, Lanai, Hawai'i Island) will attend. In morning plenary sessions, participants will explore commonalities between the artistic and scientific processes. Through experiential arts and science activities, participants will understand how integrating the two curricula allow students to make connections through creativity and imagination. Science notebooks will be introduced and used throughout the week by participants to record their observations, questions, and reflections. These sessions will be co-presented by arts and science educators, Dr. Jamie Simpson Steele and Dr. Lori Fulton, respectively. In the afternoon, teachers will attend studio sessions in one art form – dance, drama, or visual arts - led by Master teaching artists. Teachers will be immersed in learning the elements, skills, and strategies of this specific art form. Arts integration with scientific concepts will be explored, reflected upon and debriefed. Teachers also practice facilitation of these arts processes using their colleagues as their students. Teachers start to develop an arts integrated unit based on their science curriculum and participate in a lesson plan tuning protocol with colleagues.

To further support teacher learning, demonstration sessions with a teaching artist in the classroom will be scheduled in the fall so that Institute teachers can observe the facilitation of the arts strategies with students as well as its effect on learning. Teachers meet on December 5, 2015 to share their portfolios of the arts integrated units that they will have taught in their classrooms during the fall.

Hawai'i Arts Alliance will administer and coordinate the annual Institutes, ongoing residencies, contracting qualified teaching artists and consultants, development and documentation of integrated curriculum. The Alliance will work closely with other ARTS FIRST Partners, Hawai'i Association of Independent Schools, UHM College of Education, UHM College of Arts & Humanities, and other experts and faculty at UHM such as the College of Engineering, Department of Education and State Foundation on Culture and the Arts. Responsibilities for establishing the longer-term evaluation tools will be led by professors in the College of Education working closely with faculty in the College of Arts and Humanities. Teachers and students in DOE public schools and those from Independent Schools will benefit. The Hawai'i State Foundation on Culture and the Arts and the Department of Education contribute to the support of the annual Institutes and related Artists-in-the-Schools programs. The two Affiliates, Honolulu Theatre for Youth and Maui Arts & Culture Center are key to the delivery and documentation of educational services in collaboration with the DOE across the state.

## **2. Timeline for Services**

Collaborative Residencies will be scheduled through the school year. The teaching artists will have 25-30 contact sessions with the students of each of their partner teachers over the School Year. In these residencies, the teaching artists will support the classroom teachers through modeling, observation, co-teaching, feedback, and reflection. Teachers will continue to build their confidence and knowledge in the use and teaching of the STEAM lessons. Teaching artists will strengthen their skills in working collaboratively and integrating science content. At the end of each semester, all teams will gather to share their learning experiences as well as to evaluate the team and student learning that has taken place.

The annual timeline for 2015 is listed below:

### January-March 2015

- Planning meetings with presenters about Institute content
- Recruit teaching artists and science educators for collaborative residency
- Submission of paperwork to PDE3 site for DOE PD credit
- Course recruitment and registration
- Travel coordination for Neighbor Island participants

### April – June 2015

- Preparation of Institute materials and packets
- June 9-12, 2015 – Four-day Institute

### August – Dec 2015

- Demonstration classes take place in August-October
- Arts+Science curriculum implemented
- Dec. 5, 2015 - Participants return to share their learning portfolios
- Review of teachers' learning portfolios

Evaluation and reports will be compiled in early 2016.

## **3. Quality Assurance and Evaluation**

The Governing Board of Directors for Hawai'i Arts Alliance monitors the quality of programs, staff and working relationships with partners. The Chief Executive Officer reports on a monthly basis to these 15 Directors. In addition, the Kennedy Center requires an annual profile to report on the year's accomplishments and annual updates. An Independent Audit, in accordance with generally accepted auditing principles and procedures is reported every year to the Board and available upon request. The

management letter from the Independent Auditor is consistently excellent, with no recommendations for changes in accounting principles, procedures or presentation.

#### 4. Measures of Effectiveness

A GIA award from the Hawai'i State Legislature will greatly assist our quest to improve education by supporting Phase 2 of the development of the STEAM model that can provide up-to-date, meaningful learning to help our students be ready to meet the expectations and demands of our 21<sup>st</sup> century economy. Investment in teacher knowledge increases students' achievement. In addition, continuing demonstration of state public funds for support of quality professional development is key to attracting significant national and private resources to our state. The effectiveness of the Grant in Aid funding support can be measured by progress in the following:

- Number of integrated arts/science lessons created and prepared for implementation in the classroom. We are expecting 70 portfolios and 210 lessons implemented in 2016. Each lesson will be accompanied by 3 samples of student learning and the teacher's evaluation and feedback.
- The number of classrooms/schools where STEAM curriculum is implemented, and the success as demonstrated by students' understanding of the concepts in each discipline. This data will be collected from the teachers' portfolios, exit surveys at the conclusion of the portfolio sharing sessions and through the focus group interviews.
- Survey to assess teachers' continued use and implementation of the STEAM strategies.

The outcomes are directly aligned with the purposes and priorities of the Grant in Aid fund since the goal is to have arts integrated into as many STEM programs across the state as possible. The idea of integrating the arts with learning in other fields, including the STEM disciplines, is not new. In fact, some observers have noted an increase of late in activity more broadly to promote arts integration across the curriculum, at a time when the arts struggle to keep a foothold in classrooms amid school budget cuts and the pressure for academic gains in core subjects like reading and math.

### III. FINANCIAL

1. Please see included "Budget Request by Sources of Funds" worksheet.
2. Anticipated quarterly funding requirements for FY 2015-2016 are below.

Quarter 1	Quarter 2	Quarter 3	Quarter 4	Total Grant
\$200,000	\$110,000	\$100,000	\$50,028	\$460,028



3. Other sources of funding that are being sought for the STEAM program in FY 2016 are:

- National Endowment for the Arts - \$164,500
- City and County of Honolulu - \$100,768
- Johnson Ohana Foundation - \$10,000

4. No state or federal tax credits have been granted in previous years.

5. Government Contracts and /or Grants

Please see the included "Government Contracts and/or Grants" worksheet.

6. The balance of unrestricted current assets as of December 31, 2014 was \$74,572.02

#### **IV. EXPERIENCE and CAPABILITY**

##### **A. Necessary Skills and Experience**

Since 1980 Hawai'i Arts Alliance has promoted and served ALL the arts as essential to a complete education. Over the past 35 years, the Alliance led statewide conferences; professional development for teachers, and artists, model arts programs in schools and communities and annually recognizes Arts Excellence schools from across the state. The Alliance led the advocacy and support for the legislation (ACT 306/01) mandating revision of the state Fine Arts standards and codifying the ARTS FIRST Partners (aka "Hawaii Arts Education Partners"). The Alliance's statewide programs serve all ethnic groups and ages, pre-school through seniors and include all Neighbor Islands and all ethnic groups.

The work of Hawai'i Arts Alliance is nationally recognized by the John F. Kennedy Center for the Performing Arts in Washington D.C. with annual awards of support for programs and operations up to the eligible maximum. The review panels consistently commend us for excellence, and our Alliance is considered one of the outstanding national models. Other evidence of experience for the Alliance are two U.S. Department of Education research grants, several National Endowment for the Arts grants, awards from the Americans for the Arts and the Ford Foundation, support from the Hawai'i Community Foundation, management of Hawai'i State Foundation on Culture and the Arts programs, Art Bento @ HiSAM (outreach for Hawai'i State Art Museum) and the statewide Artists-in-the-School (AITS) program.

##### **B. Facilities**

The majority of the professional development and proposed programs and services are offered on-site at DOE school campuses or the University of Hawai'i locations at Manoa, Leeward, Windward, Hilo and Kauai. Additional facilities that have been made available for Institutes and the AITS include the Mid-Pacific Institute campus, the Maui Arts &

Cultural Center and the YWCA of Oahu in Honolulu. All these facilities are ADA accessible and in compliance with ADA requirements.

## **V. PERSONNEL: PROJECT ORGANIZATION and STAFFING**

### **A. Proposed Staffing, Staff Qualifications, Supervision and Training**

The expertise of Hawai'i Arts Alliance staff is widely considered to be exemplary. The Chief Executive Officer, Education Director and Associate Education Director all serve on committees and boards nationally and locally. The CEO has been invited to make presentations at the annual Kennedy Center Leadership Conference and has served on the National Leadership Committee. The Education Director oversees the successful grant challenge program for the nine Performing Arts Learning Centers throughout the state. Both she and the Associate Director of Education work closely with the state arts agency, the Department of Education, Honolulu Theater for Youth and Maui Arts & Cultural Center to develop and implement professional development for teachers, artists and communities. Hawai'i Arts Alliance also depends on a large pool of highly qualified, dedicated teachers, partners and volunteers to successfully administer its programs and events. From a financial standpoint, Hawai'i Arts Alliance has been in existence for over 34 years and has endured the turns in the economy, fluctuating levels of donor support and changes in government administrations. Hawai'i Arts Alliance has remained a solid financial organization throughout, incurring no debt and while continuing to expand programs.

### **HAWAI'I ARTS ALLIANCE STAFF INCLUDES:**

**MARILYN CRISTOFORI**, Chief Executive Officer, has served the Alliance since 1994 and was a key leader in the formation of the ARTS FIRST Partners. Her academic degrees include: B.A. in Education from Stanford University; Masters in Dance/Theatre from California State University; and an Executive MBA (honors) from University of Hawai'i at Manoa. Her professional credentials include Director of national Summer Arts Festivals; management of Dance Pioneers; Director of Dance Education for the Rhode Island State Council on the Arts; Executive Producer of two award-winning PBS documentaries; and performer in professional ballet and modern dance companies. She was a dance/movement specialist for the National Endowment for the Arts, Artists-in-Schools. She served on The Kennedy Center National Leadership Committee. In Hawai'i, she is on the Affiliate Graduate Faculty for Dance and Theatre at the University of Hawai'i. She is past director of the Hawai'i Association for the Education of Young Children and Professor Emerita of California State University, Chico.

**LEI AHSING**, Education Director, oversees all Alliance education programs including annual Institutes and professional development workshops. She earned her M.F.A in Theatre and Dance and a B.A. in Psychology from the University of Hawai'i at Manoa and has 25 years teaching experience in arts education. She has served the Alliance since 1996. Previously, she coordinated Hawai'i State Dance Council's Creative Movement program. Ms. Ahsing coordinated the Arts & Literacy for All Research Project a U.S. DOE

funded program that studied the impact of a standards based arts education program on student scores in reading, writing and teacher pedagogy, attitudes, and practices. She coordinated the previous U.S. DOE funded ARTS FIRST Windward Research Project, She assisted the Department of Education in developing the revised Hawai'i Content Standards for the Arts, and she was a key member of the Curriculum Framework Team that developed the *Essential Arts Toolkit for the K-5 Classroom Teacher: Hawai'i Fine Arts Grade Level Guide*. She works closely with the Hawai'i Department of Education, Hawai'i State Foundation on Culture and the Arts, UHM College of Education and College of Arts and Humanities, Honolulu Theater for Youth and Maui Arts & Cultural Center.

**MARCIA PASQUA**, Associate Education Director, is also a well-recognized visual artist specializing in printmaking, sculpture and painting. She has exhibited locally and internationally in group and juried shows. She teaches children and adults as a teaching artist and worked as an Artist Mentor in Alliance programs. She has served in residencies for Artists-in-the-Schools and as an Ambassador for "Museum in a Box" for Honolulu Museum of Art. She has taught Creative Arts Education (Art for Elementary School Teachers at Chaminade University and Figure Sculpture through the UHM Outreach College. Currently she works with Lei Ahsing in coordination of the Professional Development Workshops for Teachers.

#### **ARTS FIRST TEACHING PARTNERS INCLUDES:**

**JAMIE SIMPSON STEELE**, Assistant Professor of Performing Arts for the College of Education, UHM holds a Ph.D. in Education in the area of Curriculum and Instruction. As a researcher, she has done evaluation studies for Honolulu Theatre for Youth's (HTY) ELL drama program and professional development program. Dr. Simpson Steele has published and presented scholarly works nationally and internationally. As a professional development facilitator, she actively works with teacher candidates, in-service teachers and teaching artists. She is currently a professional development and research consultant with the Alliance, HSFC, HTY, and Maui Arts & Cultural Center.

**LORI FULTON**, PhD, Assistant Professor in Science Education, University of Hawaii at Manoa, College of Education, teaches the elementary science methods courses for the Institute of Teacher Education and conducts research within the Curriculum, Research, & Development Group. With 19 years elementary classroom experience, she worked as a facilitator on a math & science enhancement project for 8 years, in which she developed and facilitated science professional development for K-5 teachers.

**DANIEL A. KELIN II** is the Director of Education for Honolulu Theatre for Youth. A nationally recognized Master Teaching Artist in Drama/Theatre, he is on the National Teaching Artist roster of the John F. Kennedy Center for the Performing Arts. He has served as a Consultant and Trainer for many arts and social service organizations nationally and internationally. He was a Fulbright Scholar in 2009 and has authored four books on drama education and storytelling.

**MAULIOLA COOK**, MFA, has been teaching creative dance and Hawaiian studies to students and teachers in Hawai'i for over twenty years. Ms. Cook is on the John F. Kennedy Center's National Teaching Artist roster and is one of Hawaii's master teaching artists. Maui has been a presenter for the ARTS FIRST Institute for the past eight years.

**MICHAEL WALL** is an advanced teaching artist on HSFCA's ATP roster with many years experience working in the Artists in the Schools Program with Hawaii children and youth. He has taught and performed traditional African drumming for over a decade. He has studied with master drummers from West Africa, Cuba, Brazil and the USA.

**HAWAI'I STATE AGENCY PARTNERS INCLUDES:**

**VIVIEN LEE** (Arts Program Specialist) Hawai'i State Foundation on Culture and the Arts (HSFCA), oversees the Artistic Teaching Partners Roster and the Artists in the Schools Program. Ms. Lee holds a Master of Fine Arts degree in Dance from the University of Hawai'i at Manoa. She has over 20 years experience as a teaching artist. HSFCA oversees implementation of the Arts Education Strategic Plan, reporting directly to the state legislators, and closely monitors ARTS FIRST projects.

**GINA NAKAHARA** (Education Specialist) Hawai'i Department of Education, oversees the Fine Arts and World Language Programs, and works to improve and support existing programs. Ms. Nakahara will oversee the professional development credit for the course and assist with planning and logistics.

**B. Organization Chart**

Please see the included "Organization Chart".

**C. Compensation**

Please see the included "Budget Justification – Personnel and Wages" worksheet.

**VI. OTHER**

**A. Litigation**

There is no past nor pending litigation in which Hawai'i Alliance for Arts Education dba Hawai'i Arts Alliance is a party.

**B. Licensure or Accreditation**

Not applicable.

**C. Federal and County Grants**

National Endowment for the Arts - \$75,000

**D. Private Educational Institutions**

The grant will not be used to support or benefit a sectarian or non-sectarian private educational institution as per the Hawai'i State Constitution, Article X, Section 1.

**E. Future Sustainability**

The intent of this request is to support the development of a STEAM model that can provide timely, meaningful education to prepare students to meet the expectations and demands of the 21st century. Hawai'i Arts Alliance plans to pursue funding from other sources during the upcoming year, including the U.S. Department of Education's Arts in Education Model Development and Dissemination (AEMDD) grant program and grants from the National Endowment for the Arts. The Alliance was the successful recipient of two AEMDD multi year grants that focused on arts integration in 2003-2006 and 2006-2010. The Alliance also receives repeated support from the NEA for its arts integration and STEAM programs.

This is an evolving program that will be adopted and incorporated into schools and communities as understanding of the tools and integration are refined. The requested funding will help stabilize the platform for growth over the next 3-5 years, after which time we envision adapting the future of STEAM rather than sustaining these specific approaches. We have experienced growth from our integrated ToolKit for which usage by university professors has greatly increased over the past few years.

**A. Certification of Good Standing**

Please see the included "Certification of Good Standing" from the Department of Commerce and Consumer Affairs.

## BUDGET REQUEST BY SOURCE OF FUNDS

Period: July 1, 2015 to June 30, 2016

Applicant: Hawai'i Alliance for Arts Education, dba Hawai'i Arts Alliance

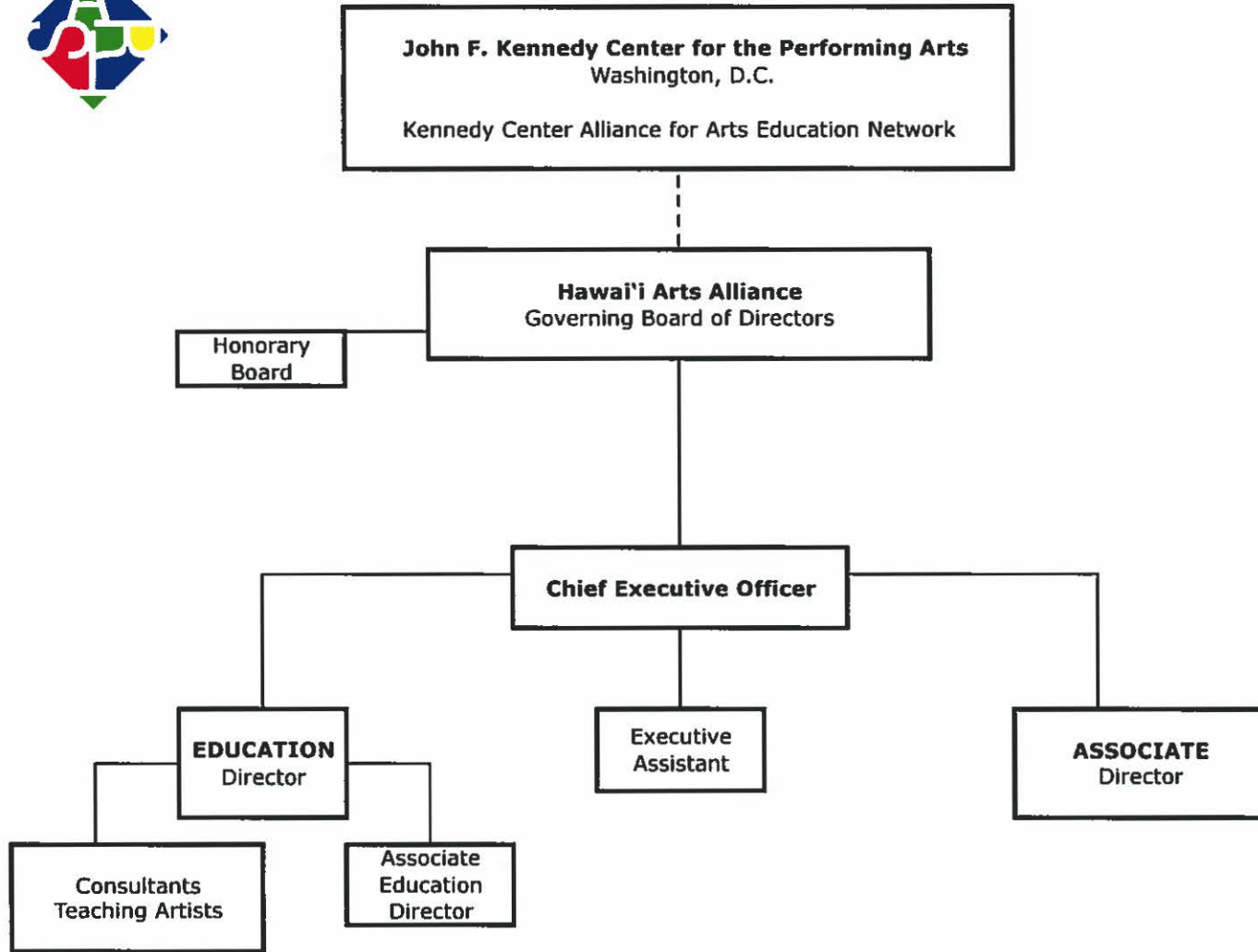
BUDGET CATEGORIES	Total State Funds Requested (a)	Total Federal Funds Requested (b)	Total County Funds Requested (c)	Total Private/Other Funds Requested (d)
<b>A. PERSONNEL COST</b>				
1. Salaries	76,690	47,180	22,730	4,000
2. Payroll Taxes & Assessments	15,338		1,739	
3. Fringe Benefits				
<b>TOTAL PERSONNEL COST</b>	<b>92,028</b>	<b>47,180</b>	<b>24,468</b>	<b>4,000</b>
<b>B. OTHER CURRENT EXPENSES</b>				
1. Airfare, Inter-Island	10,000	15,000	35,000	4,000
2. Insurance				
3. Lease/Rental of Equipment			1,000	
4. Lease/Rental of Space	8,500	5,000	3,000	
5. Staff Training	1,000			
6. Supplies	17,500	2,920	4,000	1,000
7. Telecommunication				
8. Utilities		800	1,500	
9. Teaching Artists Fees	100,000	46,000	25,000	1,000
10. Classroom Teachers Stipends	50,000			
11. Science Mentor Honorariums	50,000			
12. Ground Transportation/Lodging	5,000	16,800		
13. Education Consultants	79,000			
14. Evaluators	40,000	7,000		
15. Marketing and Public Relations	3,000		1,800	
16. Printing, Copying Costs	4,000	2,800		
17. Intern		2,000		
18. Videographer		5,000		
19. Hospitality		9,000		
20. General and Administrative		5,000	5,000	
<b>TOTAL OTHER CURRENT EXPENSES</b>	<b>368,000</b>	<b>117,320</b>	<b>76,300</b>	<b>6,000</b>
<b>C. EQUIPMENT PURCHASES</b>				
<b>D. MOTOR VEHICLE PURCHASES</b>				
<b>E. CAPITAL</b>				
<b>TOTAL (A+B+C+D+E)</b>	<b>460,028</b>	<b>164,500</b>	<b>100,768</b>	<b>10,000</b>
<b>SOURCES OF FUNDING</b>		Budget Prepared By:		
(a) Total State Funds Requested	460,028	Aaron Kibota 533-2787		
(b) Total Federal Funds Requested	164,500	Name (Please type or print) _____ Phone _____		
(c) Total County Funds Requested	100,768	Signature of Authorized Official _____ Date <u>JAN 30, 2015</u>		
(d) Total Private/Other Funds Requested	10,000	Marilyn Cristofori, Chief Executive Officer		
<b>TOTAL BUDGET</b>	<b>735,296</b>	Name and Title (Please type or print)		

# GOVERNMENT CONTRACTS AND/OR GRANTS

Applicant: Hawai'i Alliance for Arts Education dba, Hawai'i Arts Alliance

	CONTRACT DESCRIPTION	EFFECTIVE DATES	AGENCY	GOVERNMENT ENTITY (U.S. / State / Haw / Hon / Kau / Mau )	CONTRACT VALUE
1.	STEAM	FY2014	National Endowment for the Arts	Federal	\$75,000
2.	STEAM	FY2013-2014	Hawai'i State Legislature	State	\$100,000
3.					
4.					
5.					
6.					
7.					
8.					
9.					
10.					
				TOTAL	\$175,000

**ORGANIZATIONAL CHART**  
**Hawai'i Arts Alliance**



**Programs:**

Artists in the Schools  
 Professional Development for Teaching Artists  
 Art Bento Program @ HiSAM  
 Arts Excellence Awards  
 ARTS FIRST Institute

Performing Arts Learning Centers (PALC)  
 POW! WOW! Hawai'i (fiscal sponsor)

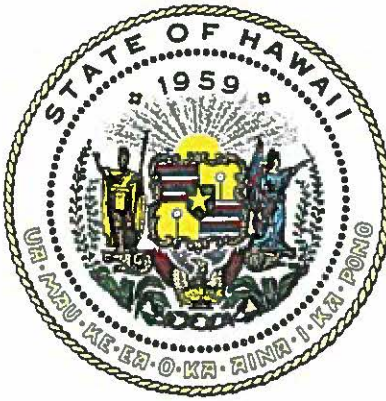


**BUDGET JUSTIFICATION - PERSONNEL SALARIES AND WAGES**

Period: July 1, 2015 to June 30, 2016

Applicant: Hawai'i Alliance for Arts Education, dba Hawai'i Arts Alliance

POSITION TITLE	FULL TIME EQUIVALENT	ANNUAL SALARY A	% OF TIME ALLOCATED TO GRANT REQUEST B	TOTAL STATE FUNDS REQUESTED (A x B)
Chief Executive Officer	1	\$83,000.00	15.00%	\$ 12,450.00
Director of Education	1	\$68,500.00	46.00%	\$ 31,510.00
Associate Director	1	\$60,000.00	16.00%	\$ 9,600.00
Associate Director of Education	1	\$35,000.00	46.00%	\$ 16,100.00
Executive Assistant	1	\$37,000.00	19.00%	\$ 7,030.00
				\$ -
Payroll Taxes & Assessments 20% of Total				\$ 15,338.00
				\$ -
				\$ -
				\$ -
				\$ -
				\$ -
				\$ -
				\$ -
<b>TOTAL:</b>				<b>92,028.00</b>
<b>JUSTIFICATION/COMMENTS:</b>				



## Department of Commerce and Consumer Affairs

### CERTIFICATE OF GOOD STANDING

I, the undersigned Director of Commerce and Consumer Affairs of the State of Hawaii, do hereby certify that

#### HAWAI'I ALLIANCE FOR ARTS EDUCATION

was incorporated under the laws of Hawaii on 12/30/1980 ;  
that it is an existing nonprofit corporation; and that,  
as far as the records of this Department reveal, has complied  
with all of the provisions of the Hawaii Nonprofit Corporations  
Act, regulating domestic nonprofit corporations.

IN WITNESS WHEREOF, I have hereunto set  
my hand and affixed the seal of the  
Department of Commerce and Consumer  
Affairs, at Honolulu, Hawaii.

Dated: November 10, 2014

Director of Commerce and Consumer Affairs



**DECLARATION STATEMENT OF  
APPLICANTS FOR GRANTS PURSUANT TO  
CHAPTER 42F, HAWAI'I REVISED STATUTES**

The undersigned authorized representative of the applicant certifies the following:

- 1) The applicant meets and will comply with all of the following standards for the award of grants pursuant to Section 42F-103, Hawai'i Revised Statutes:
  - a) Is licensed or accredited, in accordance with federal, state, or county statutes, rules, or ordinances, to conduct the activities or provide the services for which a grant is awarded;
  - b) Complies with all applicable federal and state laws prohibiting discrimination against any person on the basis of race, color, national origin, religion, creed, sex, age, sexual orientation, or disability;
  - c) Agrees not to use state funds for entertainment or lobbying activities; and
  - d) Allows the state agency to which funds for the grant were appropriated for expenditure, legislative committees and their staff, and the auditor full access to their records, reports, files, and other related documents and information for purposes of monitoring, measuring the effectiveness, and ensuring the proper expenditure of the grant.
- 2) If the applicant is an organization, the applicant meets the following requirements pursuant to Section 42F-103, Hawai'i Revised Statutes:
  - a) Is incorporated under the laws of the State; and
  - b) Has bylaws or policies that describe the manner in which the activities or services for which a grant is awarded shall be conducted or provided.
- 3) If the applicant is a non-profit organization, it meets the following requirements pursuant to Section 42F-103, Hawai'i Revised Statutes:
  - a) Is determined and designated to be a non-profit organization by the Internal Revenue Service; and
  - b) Has a governing board whose members have no material conflict of interest and serve without compensation.

Pursuant to Section 42F-103, Hawai'i Revised Statutes, for grants used for the acquisition of land, when the organization discontinues the activities or services on the land acquired for which the grant was awarded and disposes of the land in fee simple or by lease, the organization shall negotiate with the expending agency for a lump sum or installment repayment to the State of the amount of the grant used for the acquisition of the land.

Further, the undersigned authorized representative certifies that this statement is true and correct to the best of the applicant's knowledge.

HAWAI'I ARTS ALLIANCE

[Redacted Name]

MARILYN CRISTOFORI, CEO

[Redacted Signature]

Jan. 30, 2015

MARILYN CRISTOFORI

CHIEF EXECUTIVE OFFICER

(Typed Name)

(Title)