

House District 3

Senate District 2

THE TWENTY-EIGHTH LEGISLATURE  
APPLICATION FOR GRANTS  
CHAPTER 42F, HAWAII REVISED STATUTES

Log No:

For Legislature's Use Only

Type of Grant Request:

GRANT REQUEST - OPERATING

GRANT REQUEST - CAPITAL

"Grant" means an award of state funds by the legislature, by an appropriation to a specified recipient, to support the activities of the recipient and permit the community to benefit from those activities.

"Recipient" means any organization or person receiving a grant.

STATE DEPARTMENT OR AGENCY RELATED TO THIS REQUEST (LEAVE BLANK IF UNKNOWN):

STATE PROGRAM I.D. NO. (LEAVE BLANK IF UNKNOWN):

1. APPLICANT INFORMATION:

Legal Name of Requesting Organization or Individual: Friends of the Volcano School of Arts & Sciences

Dbn:

Street Address: 99-128 Old Volcano Road, Volcano, HI 96785

Mailing Address: P.O. Box 845, Volcano, HI 96785

2. CONTACT PERSON FOR MATTERS INVOLVING THIS APPLICATION:

Name DARYL L. SMITH

Title Chair

Phone # 808-938-5565

Fax # 808-985-9898

E-mail aiss1@hawaiiantel.net

3. TYPE OF BUSINESS ENTITY:

- NON PROFIT CORPORATION INCORPORATED IN HAWAII
- FOR PROFIT CORPORATION INCORPORATED IN HAWAII
- LIMITED LIABILITY COMPANY
- OTHER
- SOLE PROPRIETORSHIP/INDIVIDUAL

6. DESCRIPTIVE TITLE OF APPLICANT'S REQUEST:

THE FRIENDS OF VOLCANO SCHOOL OF ARTS & SCIENCES SEEKS A \$500,000 GRANT IN AID TO ASSIST IN THE DEVELOPMENT OF A COMMUNITY KITCHEN ON THE SITE OF THE HISTORIC KEAKEALANI SCHOOL PROPERTY IN VOLCANO VILLAGE ON THE ISLAND OF HAWAII. THE PURPOSE OF THIS REQUEST IS TO PROVIDE THE VOLCANO AND SURROUNDING COMMUNITIES WITH A COMMUNITY KITCHEN THAT WOULD BE AVAILABLE FOR COMMUNITY USE, EDUCATIONAL PURPOSES, COMMUNITY SUSTAINABILITY, AND FOR PREPARING MEALS FOR THE COMMUNITY.

4. FEDERAL TAX ID #:

5. STATE TAX ID #:

7. AMOUNT OF STATE FUNDS REQUESTED:

FISCAL YEAR 2016: \$ 500,000

8. STATUS OF SERVICE DESCRIBED IN THIS REQUEST:

- NEW SERVICE (PRESENTLY DOES NOT EXIST)
- EXISTING SERVICE (PRESENTLY IN OPERATION)

SPECIFY THE AMOUNT BY SOURCES OF FUNDS AVAILABLE AT THE TIME OF THIS REQUEST:

STATE \$ \_\_\_\_\_  
 FEDERAL \$ \_\_\_\_\_  
 COUNTY \$ \_\_\_\_\_  
 PRIVATE/OTHER \$ \_\_\_\_\_



RECEIVED

1/16/15  
*[Signature]*

TYPE NAME & TITLE OF AUTHORIZED REPRESENTATIVE

[Redacted Signature]

DARYL L. SMITH, CHAIR

NAME & TITLE

1/14/15

DATE SIGNED

## Application for Grants

*If any item is not applicable to the request, the applicant should enter "not applicable".*

### I. Background and Summary

This section shall clearly and concisely summarize and highlight the contents of the request in such a way as to provide the State Legislature with a broad understanding of the request. Please include the following:

1. A brief description of the applicant's background;

The Friends of the Volcano School of Arts & Sciences (FVSAS) is a 501(c)3 nonprofit organization whose mission is to support the Volcano School of Arts & Sciences (VSAS), a public charter school. Typical support activities include grant-writing, fundraising and holding assets for the school's use.

2. The goals and objectives related to the request;

The goals and objectives of this application is to execute the construction of a hot-preparation Community Certified Kitchen on the site of the historic Keakealani School property in Volcano Village, Island of Hawaii.

The general planning and design phases of the school's expansion has been completed thanks to community involvement, volunteerism, donations, with the school and its non-profit organization--the Friends of the Volcano School of Arts & Sciences--covering the remaining costs. The Community Certified Kitchen is included in the future plans of the school as the original budget did not support the expenses related to a full-service Community Certified Kitchen.

FVSAS and VSAS would like to develop a Community Certified Kitchen to educate community members of all ages through culinary programs, prepare meals for individuals in the community through the National School Lunch Program, Summer Meal Programs, and other programs similar to Meals on Wheels for those with transportation or mobility challenges. In conjunction with the Puna and Volcano Community Development Plans, FVSAS and VSAS would like to support local farmers and decrease our community's dependency on oil by encouraging the use of and using produce available locally.

3. The public purpose and need to be served;

“As a rural area with a rudimentary transportation system and dispersed population” it is difficult for residents to gain access to needed services (Puna Community Development Plan Steering Committee, 2008, p. 3-11). In Volcano, specifically, there is a “disproportionately higher percentage of older adults and retirees than other communities in Puna, and a lower percentage of school age children” (Volcano Community Association, 2014, p. 13), many of whom also have transportation or access challenges. Therefore, schools become an important resource “serving not only as educational institutions, but also as de facto community centers and recreation areas in rural areas where few other venues are available for meetings, events and organized or informal sports” (Puna Community Development Plan Steering Committee, 2008, p. 3-11).

The community-identified needs include:

1. Transportation challenges (due to geographic distance and dispersement)
2. Mobility challenges (due to age, disability or health)
3. Community Centers for meetings, events, and other recreation
4. Income-generating opportunities and employment that promote education, sustainability and “green” living. hi

While FVSAS and VSAS is not committed to solving the larger transportation or commuting challenges of Puna residents, through our Community Kitchen, we can facilitate options for feeding our neighbors through programs similar to Meals-on-Wheels, taking the food to people where they live and providing some social connection for those individuals on a regular basis.

After our initial school development plans are completed, the Community Kitchen will be located next to our Meeting Facilities, which is a large multipurpose building thereby enabling community members to have access to facilities for meeting, events, and other social activities.

Additionally, in alignment with the Puna Community Development Plan, using the resources available within the larger Puna Community, such as its agricultural industry, FVSAS and VSAS is committed to serve the community by encouraging economic growth for businesses in the Puna and surrounding areas. By integrating local produce grown by neighboring farmers, FVSAS and VSAS will help to expand local markets for consumption.

Educational and economic support services such as developing a business incubator by sharing usable spaces could also be possible, “where small businesses can, for a start-up period of two to three years, occupy spaces at subsidized rent, share receptionist and other common support services and facilities, and have access to business mentoring, marketing skills training, and product promotion programs” (Puna Community Development Plan Steering Committee, 2008, p. 3-10).

As an educational institution, VSAS has been exploring a partnership with the Hawaii Community College (HCC) as a way to offer educational opportunities closer to residents. Such offerings could include technology training, “community-based organic farming operation and training,” job readiness skills, and through the Community Kitchen, culinary arts (Puna Community Development Steering Committee, 2008, p. 3-11).

Our development of a Community Certified Kitchen meets several of the needs of both the Puna Community Development Plan and the Volcano Long-Range Plan and provides the school with a hot-preparation kitchen for school breakfast and lunch service for our students. Partnering with the Hawaii Child and Nutrition Program, we will be able to offer meals to members of the community at no cost or minimal cost during the summer as well.

4. Describe the target population to be served; and

Volcano School of Arts & Sciences

The Friends of the Volcano School of Arts & Sciences primarily serves the target population in many ways through our support role to VSAS. VSAS’s current school enrollment for School Year 2014-2015 in grades K-8 is 176 with an expected projection of 188 at the official count date in October 2014. In School Year 2013-2014, the official enrollment was 188. VSAS had a total of over 100 students on the waiting list for all grades.

About half of the students reside in the Volcano area, and many students come from Mountain View, Na’alehu, and Ocean View. Other students travel from as far away as Hilo and Pahoa. 47% of the students enrolled at VSAS live within the Volcano area, 28% travel between 13-27 miles one way to attend school on a daily basis, and 25% of the students travel 30-50 miles one way to attend VSAS. The distance that students travel, the number of prospective students on the waiting list, and the average daily attendance (91.3% over the past four years), indicates not only satisfaction with the services that VSAS offers its students, but also the willingness of families to put forth the effort to ensure that their children are afforded a quality education.

Our students are of a diverse ethnic and socio-economic mix. In 2013-2014, the primary ethnicities reported by our students were: Caucasian (45%), Hawaiian or Part-Hawaiian (30%), Japanese (7%), Filipino (6%), Hispanic (3%), Black (3%), Portuguese (3%), American Indian (2%), and Chinese (2%). We estimate approximately half of the students are of mixed race. Most Hawaiian, Asian, Polynesian, Portuguese, and American Indian students are of mixed race while a few Caucasian, African-American, and Hispanic students are also of mixed race.

While the target population for this project will first and foremost be the students enrolled at Volcano School, the wider Volcano community, volunteers, and parents will benefit from the Community Kitchen through educational programs, meals and access to the facilities.

### Hawaii County

Hawaii is ethnically diverse. The ethnic distribution differs from Puna, Hilo, and the Hawai'i Island with Volcano's higher percentage of individuals of Caucasian descent.

Hawaii County has experienced a steady growth in population as reflected in the percentage change in population over time, and in the last two years experienced a growth rate of 2.5% increase compared to 2.4% for the state (U.S. Census Bureau, 2013).

According to the most recent Census, and average of 17% of the population in Hawaii County were living in poverty between the years of 2008-2012 compared to the state average of 10.8% (U.S. Census Bureau, 2013).

### Puna Region

The population of Puna and Ka'u by race basically mirrors that of the island as a whole, with about 25% Asian, 10% Native Hawaiian and Other Pacific Islander, about 30% white, and about 30% mixed races, with smaller numbers of Black or African American alone, American Indian and Alaska Native. Puna and Ka'u have slightly higher numbers of white and individuals with two or more races than the island average.

The district of Puna has the highest population growth in the state with about 51% percent change in population between 1990 and 2000. Population in both the Puna and Ka'u districts are projected to continue to grow at about the same pace in future years.

Unemployment in Hawai'i County is currently 8.7%. Looking at 2002 census update, Volcano had a significantly lower rate of unemployment. Other nearby communities in Puna had rates of unemployment higher than the island average, and in Ka'u unemployment rates for Naalehu and Pahala were nearly three times the island average.

As a rural area with transportation challenges and inadequate employment opportunities, Puna has a "high percentage of low-income residents" (Puna Community Development Plan Steering Committee, 2008, p. 3-11). Hawai'i County projects that occupations of growth in the next five years will be mostly in service-related sectors (food preparation and serving, personal care and service), retail (sales), office and administration support, and construction and related trades of building/ground maintenance.

### Volcano

Volcano is home to an economically and culturally diverse group of several thousand residents. Many Park biologists, geologists and field technician, as well as maintenance and office personnel live within the greater Volcano community. In addition, there are many Volcano residents who drive to Hilo to work each day. Other residents stay home but connect to their central offices via computer. Many work at their own small businesses such as bed-and-breakfasts, restaurants, farms, or home studios and workshops (Interim Board of Directors, 2000, p. 2).

Volcano has a higher percentage of people with a Bachelor's degree or higher than most of the island (34% compared to average of 22%). However, other areas of Puna and Ka'u tend to have much lower rates of people with Bachelor's degrees than the county average. Some communities (Mountain View with 77%, Naalehu with 70%, Pahala with 62%) also have significantly lower rates of high school graduates than the island average (85%).

The 2010 U.S. Census shows that 2,575 people are living in Volcano, 17.5% who are 65 or older, with the median age of the Volcano population being 51.2 years. (Volcano Long Range Plan, p. 13).

5. Describe the geographic coverage.

The Friends of the VSAS is co-located with VSAS and serves the Puna and Ka'u districts in the southern region of the Island. The Keaau-Mt. View division is the region in Puna that is nearest the school, and Volcano and Fern Forest are the communities in the Keaau-Mt. View division that are most served by school. Volcano also serves the Ka'u division, representing about one-third of our students. Hawaiian Ocean View, Naalehu, and Pahala are the principle communities in Ka'u that are served by the school. These communities are spread over the countryside of the upper Puna and Ka'u districts, along about 65 miles of Highway 11.

### Hawaii County

The state of Hawaii has a land area of 6,400 square miles, and the Island of Hawaii is about 4,000 square miles, making it the largest island in the chain. The 2012 census for Hawaii County was 189,191; while the 2012 population estimate for the state was 1,392,313. With 63% of the state land area and only 14% of its population, the Hawaii Island is sparsely populated at an average of about 46 persons per square mile, as of the 2010 census (U.S. Census Bureau, 2010).

### Puna Region

According to the mostly recent available census data (Census 2010), the Keaau-Mountain View region has a land area of 232.04 square miles and a population of 34,266, with about 147.7 persons per square mile, significantly higher than the county average. The Ka'u region is very sparsely populated, averaging only about 9 persons per square mile with a large land area of 1,196.58 square miles and a population of 8,451.

Both Ka'u and Puna have the highest agricultural land usage in the County. Ka'u has by far the highest conservation usage at over 427,000 acres, nearly double the next largest amount of conservation land of 236,315 acres in the district of Hamakua.

Puna has had the fastest growing rate of residential construction on the island, based on permits issued. Commercial construction has also occurred, but not at as high a rate. This rapid increase of new residents has outpaced infrastructure, and has resulted in long-distance travel for many basic necessities. Ka'u has also experienced a recent boom in construction, though this seems to have slowed. Puna and Ka'u also have had the highest rate of vacant land sales, accounting for almost 4/5 of all land sales on the island in 2006. Median dollar values of both single-family homes and vacant land in Puna and Ka'u are the lowest on the island.

### Volcano Community

The community of Volcano lies thirty miles from Hilo amid tree ferns and lava flows at 4,000 feet elevation on the east flank of Mauna Loa. The Volcano area is geographically and biologically unique, even in a state remarkable for its diversity. Native trees and bird occur naturally in our backyards. There are active steam vents along the roadsides and lava flows that have not yet begun to support life.

The Volcano area, which includes Volcano Village and neighboring communities, encompasses a land area of about 57 square miles with a population of 2,231 as of the Census 2000, about 39 persons per square mile and representative of the county average.

## **II. Service Summary and Outcomes**

The Service Summary shall include a detailed discussion of the applicant's approach to the request. The applicant shall clearly and concisely specify the results, outcomes, and measures of effectiveness from this request. The applicant shall:

1. Describe the scope of work, tasks and responsibilities;

Planning and Design activity will involve the development of a design program. This document will be an all-inclusive, exhaustive directive to the various consultants to guide them in the meeting of the desired goals and outcomes. It will include, but not be limited to:

**Planning:**

This activity will include:

- a. Grading requirements, fencing storm water control
- b. Required and necessary community involvement
- c. On-site wastewater disposal (IWS)
- d. On-site water catchment and storage; storage for potable water
- e. A multipurpose building that will include a community kitchen and auxiliary spaces as may be required
- f. Space for custodial requirements and storage (hot, cold, and dry)
- g. Engineering Activity:
  - For the cooking exhaust hood
  - Renewable electric energy
  - Solar hot water generation and
  - On-site water generation.

2. Provide a projected annual timeline for accomplishing the results or outcomes of the service;

The general planning and design phases of the school’s expansion has been completed thanks to community involvement, volunteerism, donations, with the school and its non-profit organization--the Friends of the Volcano School of Arts & Sciences--covering the remaining costs. The Community Certified Kitchen is included in the future plans of the school as the original budget did not support the expenses related to a full-service Community Certified Kitchen.

Description of Task	Start Date	End Date
Architect Plans	June 2014	September 2015
Building Permits	November 2015	April 2016
Actual Construction	May 2016	July 2016
Commencement of Services	September 2016	Ongoing

3. Describe its quality assurance and evaluation plans for the request. Specify how the applicant plans to monitor, evaluate, and improve their results; and

The Civil Engineer will assure adequate ventilation within the Community Certified Kitchen.

The Project Manager and the Kitchen Manager will assure that the installation is done in an acceptable workmanship-like manner.

All appropriate County and State agencies will certify completed work.



4. List the measure(s) of effectiveness that will be reported to the State agency through which grant funds are appropriated (the expending agency). The measure(s) will provide a standard and objective way for the State to assess the program's achievement or accomplishment. Please note that if the level of appropriation differs from the amount included in this application that the measure(s) of effectiveness will need to be updated and transmitted to the expending agency.

The measurable effectiveness of this program can be measured in two ways:

1. The construction of the Kitchen Building
  - a. The construction of the Kitchen Building will be completed by July 2015.
2. The development of community services revolving around food education, food service, and sustainability.
  - a. Food service for the community, through the use of the newly built, hot-preparation kitchen, will commence on or before September 2015.
  - b. Education for the community related to food preparation using the newly built hot-preparation kitchen, will commence on or before December 2015.
  - c. Sustainability will be developed through the use of local area produce in the meal preparations as an ongoing and expanding goal starting in September 2015.

### III. Financial

#### Budget

1. The applicant shall submit a budget utilizing the enclosed budget forms as applicable, to detail the cost of the request.

Please see the attached budget forms that detail the cost of the request.

2. The applicant shall provide its anticipated quarterly funding requests for the fiscal year 2016.

Quarter 1	Quarter 2	Quarter 3	Quarter 4	Total Grant
250,000	250,000	0	0	500,000

3. The applicant shall provide a listing of all other sources of funding that they are seeking for fiscal year 2016.

The Friends of the Volcano School of Arts & Sciences is not seeking any additional funding from the State for Fiscal year 2015. We are seeking a loan from the USDA Rural Development Program for funding for this project and its ongoing Keakealani Development Project, for a total loan amount of \$700,000 for the entire expansion project.

4. The applicant shall provide a listing of all state and federal tax credits it has been granted within the prior three years. Additionally, the applicant shall provide a listing of all state and federal tax credits they have applied for or anticipate applying for pertaining to any capital project, if applicable.

The FVSAS received a Grant-in-Aid allocated April 2, 2104 for the Keakealani Campus Development Project.

The FVSAS has also applied for a USDA loan for the same Keakealani Campus Development Project, but it is still in process and remains unallocated.

5. The applicant shall provide a listing of all government contracts and grants it has been and will be receiving for program funding.

Other than what has been previously stated, no other government contracts or grants will be requested for this project.

6. The applicant shall provide the balance of its unrestricted current assets as of December 31, 2014.

As of December 31, 2014, the Friends balance of unrestricted current assets was \$768,654.

#### **IV. Experience and Capability**

##### **A. Necessary Skills and Experience**

The applicant shall demonstrate that it has the necessary skills, abilities, knowledge of, and experience relating to the request. State your experience and appropriateness for providing the service proposed in this application. The applicant shall also provide a listing of verifiable experience of related projects or contracts for the most recent three years that are pertinent to the request.

*Daryl Smith, Chair of Friends of the Volcano School of Arts & Sciences*

Daryl Smith  
P.O. Box 180271  
Volcano, HI 96718-0271  
808-938-5565

Aissl@hawaiiantel.net

As a Licensed General Contractor, Mr. Smith has worked on a number of projects that have included commercial kitchens, most of them through projects with Hope Services Hawaii. He helped build 190 Transitional Condominiums with a commercial kitchen and classrooms for Hope Services' West Hawaii Na K Na Kahua Hale O Ulu Wini Housing Program, and was instrumental in the conversion of the Glad Tidings Church in Hilo, now used as a Men's Homeless Shelter with a commercial kitchen. Mr. Smith is currently working on a project to convert abandoned, existing structures into a low-income Senior Apartment complex consisting of 17 apartments and a commercial kitchen in Pahoa, also with Hope Services Hawaii.

In the restaurant industry, Mr. Smith has worked on the renovation of a retail space in Hilo Shopping Center which now houses Maona Restaurant. He is currently working to complete Cupcakes, Boom!—a new store in the Manono Street Marketplace in Hilo. Mr. Smith has also served as the Manager of Lava Rock Café for the past two decades and has owned his own sandwich shop.

Mr. Smith is now involved with the Volcano School of Arts & Sciences as its Project Manager for the Keakealani Campus Development Project which also includes the construction of 15 new classroom buildings, a Meeting Facility, and a Certified Kitchen.

*Amalie Dorn, Kitchen Manager of Volcano School of Arts & Sciences*

Amalie Dorn  
PO Box 1217  
Kurtistown, HI 96760  
808-966-6846 / 808-896-1912 (cell)  
e-mail: vsas.dorn@gmail.com

Ms. Dorn is the Kitchen Manager of the Volcano School of Arts & Sciences where she plans and executes monthly menus according to USDA Guidelines, creates the menus, orders food items, manages employees, manages the kitchen budget by tracking food costs and inventory, tracks portions and nutritional information, and provides learning opportunities for students on healthy food and nutrition. She was recently awarded the "Action for Health Kids Breakfast Pilot, Kokua Hawaii 'Aina in the Schools" grant to start a breakfast program for the school.

Believing in working with local farmers to keep costs low, she is also the Founding Member of the Big Island Food Service Charter Initiative partnering with Hawaii Child Nutrition, USDA, Hawaii Charter Schools, Kohala Foundation, Hawaii Island School Garden Network, Senator Russell Ruderman and our Big

Island Charter Schools. The goal of which is to share best practices in school food service & procurement specifically of locally grown fruits & vegetables.

Ms. Dorn is also a Certified Nutritionist with a Certificate in Specialized Low Fat Cooking. She has been involved in Grant Writing, Event Planning & Catering and has experience in Small Business Management, Publishing & Advertising, and Project Planning & Employee Management.

*Ardith Renteria, Education Director of Volcano School of Arts & Sciences*

Ardith Renteria, PhD  
P.O. Box 188  
Pepeekeo, HI 96783  
808-985-9800  
Vsas.director560@gmail.com

Dr. Renteria has served as the Education Director at the Volcano School of Arts & Sciences for the past three years. Prior to this role, she served in other administrative positions for other charter schools, including Connections PCS, the Charter School Review Panel and DOE schools across the State (Waiakea High School, East Hawaii Regional District Office, Waiakea Intermediate School, Kaumana Elementary, Waimanalo Elementary & Intermediate School). Much of her professional work has centered around students with disabilities.

She believes in schools serving as the hub of communities and schools being places where people come together to learn from each other and about each other. To this end, Dr. Renteria assisted in the authorship of the Friends of the Volcano School of Arts & Sciences Grant-in-Aid for \$618,000 for the Keakealani Campus awarded in 2014 which will unite the school and provide adequate learning facilities for students. She has received a number of other grants for the Volcano School of Arts & Sciences to assist with improvement of academic goals, professional development for teachers, and engaging projects for students.

Not only does she envision the school being able to serve primary and middle school students, but as an educational facility, culinary arts classes could be offered to the community in the evenings, for example. In addition, the school could serve as the provider for seamless summer programs that feed the community during non-school sessions so that students are able to access healthy meals. The ideas of how this kitchen could help the community expands exponentially with creative, hard-working people and resources.

**B. Facilities**

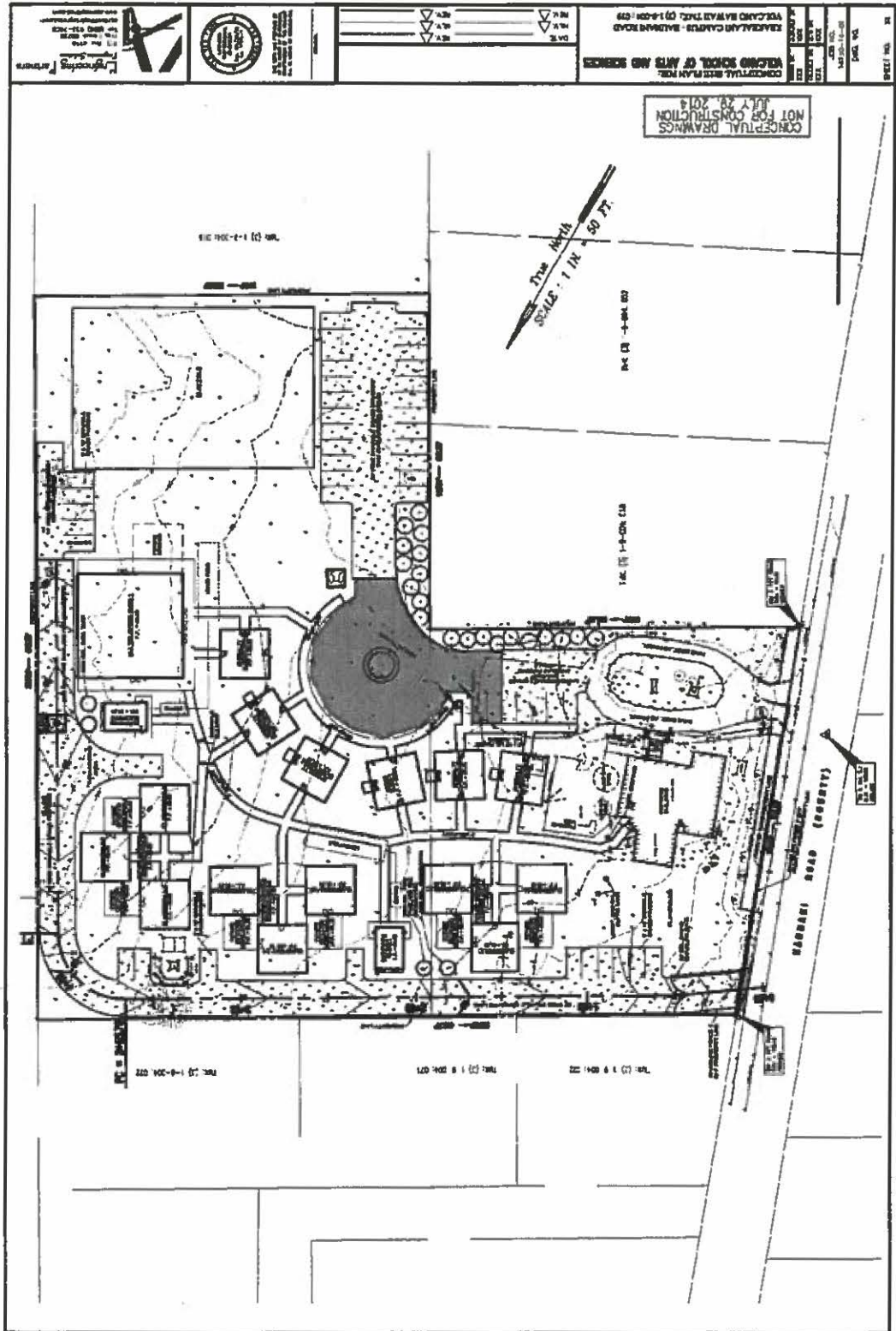
The applicant shall provide a description of its facilities and demonstrate its adequacy in relation to the request. If facilities are not presently available, describe plans to secure facilities.

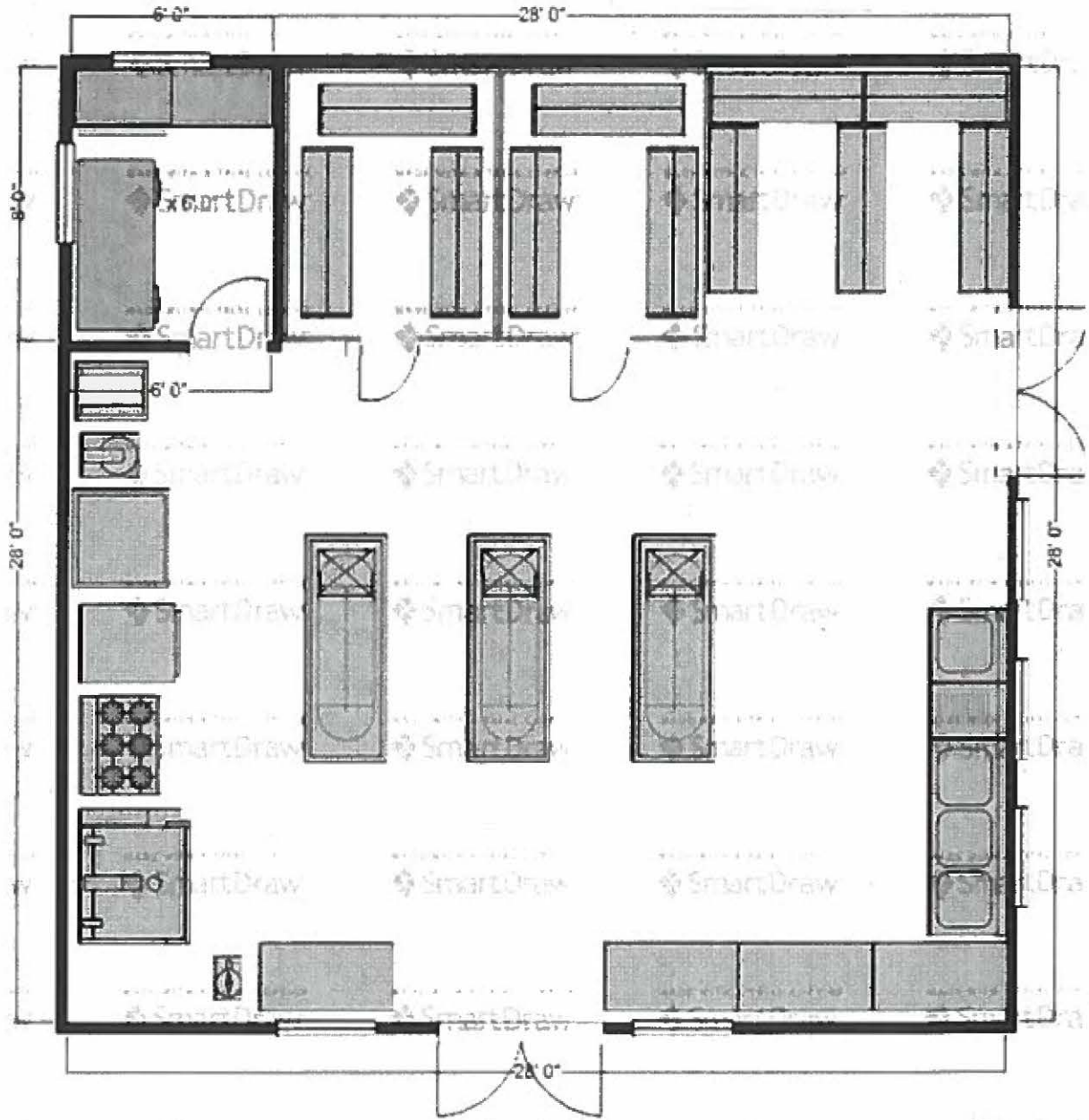
The Community Certified Kitchen will be a wooden 28 foot by 28 foot square building built on slab next to the planned Meeting Facility Building on the soon-to-be-built expanded Keakealani campus of the Volcano School of Arts & Sciences. The kitchen will have its own water supply as washing capabilities are a necessity for sanitization.

ADA Rules state that each facility or part of a facility constructed by, on behalf of or for the use of a public entity shall be designed and constructed in such a manner that the facility or part of the facility is readily accessible to and useable by individuals with disabilities. The Community Kitchen and Meeting Facility Building, being a primary use building must conform to the 2010 ADA Building Codes for accessibility. Ramps and wide double doors will be built into the facility allowing easy access by wheelchair. Convenient handicapped parking stalls are provided as per ADA compliance.

Applicant

Friends of The Volcano School of Arts  
& Sciences







## **V. Personnel: Project Organization and Staffing**

### **A. Proposed Staffing, Staff Qualifications, Supervision and Training**

The applicant shall describe the proposed staffing pattern and proposed service capacity appropriate for the viability of the request. The applicant shall provide the qualifications and experience of personnel for the request and shall describe its ability to supervise, train and provide administrative direction relative to the request.

The proposed staffing pattern for the planning, design, and construction of the project includes a licensed architect already under contract by the Friends of the Volcano School of Arts & Sciences. The construction of the project will be executed by volunteer licensed contractors and other construction workers working under the direction of the licensed contractors.

The Volunteer Project Manager is Daryl L. Smith.

The actual Community Kitchen Program will be developed by the school's Kitchen Manager, Amalie Dorn.

The Community Kitchen Program will be included under the auspices of the school with access to facilities through the Volcano School of Arts & Sciences Administration. The Education Director of VSAS is Ardith Renteria.

### **B. Organization Chart**

The applicant shall illustrate the position of each staff and line of responsibility/supervision. If the request is part of a large, multi-purpose organization, include an organization chart that illustrates the placement of this request.

This request is not part of a large, multi-purpose organization. The Friends of the Volcano School of Arts & Sciences is comprised of a Board of Directors with a total of four officers and seven Directors.

### **C. Compensation**

The applicant shall provide the annual salaries paid by the applicant to the three highest paid officers, directors, or employees of the organization by position.

The Friends of the Volcano School of Arts & Sciences Board are all volunteers. There are no paid employees of the organization.

## **VI. Other**

**A. Litigation**

The applicant shall disclose any pending litigation to which they are a party, including the disclosure of any outstanding judgement. If applicable, please explain.

There are no pending litigation or any outstanding judgments involving the Friends of the Volcano School of Arts & Sciences.

**B. Licensure or Accreditation**

The applicant shall specify any special qualifications, including but not limited to licensure or accreditation that the applicant possesses relevant to this request.

Daryl L. Smith  
Contractor License BC-11905  
B – General Building  
C – Specialties in Construction with B License (C-5, 6, 12, 24, 25, 42A, 42B)

**C. Federal and County Grants**

The applicant shall separately specify the amount of federal and county grants awarded since July 1, 2014.

None.

**D. Private Educational Institutions**

The applicant shall specify whether the grant will be used to support or benefit a sectarian or non-sectarian private educational institution. Please see Article X, Section 1, of the State Constitution for the relevance of this question.

The grant will not be used to support or benefit a sectarian or non-sectarian private educational institution.

**E. Future Sustainability Plan**

The applicant shall provide a plan for sustaining after fiscal year 2015-16 the activity funded by the grant if the grant of this application is:

- (1) Received by the applicant for fiscal year 2015-16, but
- (2) Not received by the applicant thereafter.

The sustainability plan as a result of this project is to use the Community Certified Kitchen as a source of revenue for the Friends of VSAS. Friends of VSAS intends to rent space within the Community Certified Kitchen for community members to use (for community use or for small businesses as an incubation kitchen, for example) and provide needed services to community members or organizations either for fee or by donation (catering, Meals-on-Wheels type of program to feed the elderly, culinary classes, etc.).

**F. Certificate of Good Standing (If the Applicant is an Organization)**

If the applicant is an organization, the applicant shall submit one (1) copy of a certificate of good standing from the Director of Commerce and Consumer Affairs that is dated no earlier than December 1, 2014.

## BUDGET REQUEST BY SOURCE OF FUNDS

Period: July 1, 2015 to June 30, 2016

Applicant: Friends of the Volcano School of Arts & Sciences

BUDGET CATEGORIES	Total State Funds Requested (a)	Total Federal Funds Requested (b)	Total County Funds Requested (c)	Total Private/Other Funds Requested (d)
<b>A. PERSONNEL COST</b>				
1. Salaries				
2. Payroll Taxes & Assessments				
3. Fringe Benefits				
<b>TOTAL PERSONNEL COST</b>				
<b>B. OTHER CURRENT EXPENSES</b>				
1. Airfare, Inter-Island				
2. Insurance				
3. Lease/Rental of Equipment				
4. Lease/Rental of Space				
5. Staff Training				
6. Supplies				
7. Telecommunication				
8. Utilities				
9. Plans	25,000			
10 Design	10,000			
11 Constructon	250,000			
12				
13				
14				
15				
16				
17				
18				
19				
20				
<b>TOTAL OTHER CURRENT EXPENSES</b>	<b>285,000</b>			
<b>C. EQUIPMENT PURCHASES</b>	<b>215,000</b>			
<b>D. MOTOR VEHICLE PURCHASES</b>				
<b>E. CAPITAL</b>				
<b>TOTAL (A+B+C+D+E)</b>	<b>500,000</b>			
<b>SOURCES OF FUNDING</b>		Budget Prepared By:		
(a) Total State Funds Requested	500,000	Ardith H. Renteria 808-985-9800		
(b) Total Federal Funds Requested		Name (Please type or print)  Phone		
(c) Total County Funds Requested		Signature of Authorized Official  Date 1/14/15		
(d) Total Private/Other Funds Requested				
<b>TOTAL BUDGET</b>	<b>500,000</b>	Daryl L. Smith, Chair of FVSAS Name and Title (Please type or print)		

## BUDGET JUSTIFICATION - PERSONNEL SALARIES AND WAGES

Period: July 1, 2015 to June 30, 2016

Applicant: Friends of the Volcano School of Arts & Sciences

POSITION TITLE	FULL TIME EQUIVALENT	ANNUAL SALARY A	% OF TIME ALLOCATED TO GRANT REQUEST B	TOTAL STATE FUNDS REQUESTED (A x B)
Not applicable				\$ -
				\$ -
				\$ -
				\$ -
				\$ -
				\$ -
				\$ -
				\$ -
				\$ -
				\$ -
				\$ -
				\$ -
				\$ -
				\$ -
				\$ -
				\$ -
<b>TOTAL:</b>				
<b>JUSTIFICATION/COMMENTS:</b> This project will not require personnel for its execution or completion. Therefore, no personnel costs are associated with this project.				

## BUDGET JUSTIFICATION - EQUIPMENT AND MOTOR VEHICLES

Period: July 1, 2015 to June 30, 2016

Applicant: Friends of the Volcano School of Arts &

DESCRIPTION EQUIPMENT	NO. OF ITEMS	COST PER ITEM	TOTAL COST	TOTAL BUDGETED
6 Burner Gas Stove	1	\$1,932.70	\$ 1,932.70	
Convection Oven and Proofer (Stacking wall units)	2	\$3,340.50	\$ 6,681.00	
Countertop Griddle (gas)	1	\$1,344.00	\$ 1,344.00	
Tilt Skillet 30 gallon electric	1	\$14,400.00	\$ 14,400.00	
Countertop Griddle (electric) 21"x12"	2	\$308.00	\$ 616.00	
Hobart 20 Gallon Mixer	1	\$6,665.00	\$ 6,665.00	
Kitchenaid 8 quart Mixer	1	\$939.50	\$ 939.50	
Robot Coupe Food Processor	1	\$2,411.70	\$ 2,411.70	
Rice Cooker 60 Cup	2	\$359.00	\$ 718.00	
Bag Sealer	1	\$191.15	\$ 191.15	
3 Compartment Sink	1	\$1,346.00	\$ 1,346.00	
Dishwasher	1	\$7,318.10	\$ 7,318.10	
PreRinse Sprayer Wall	1	\$568.60	\$ 568.60	
Shelving Units (storage)	5	\$874.66	\$ 4,373.30	
Prep Tables 8'	4	\$758.11	\$ 3,032.44	
Can Opener	2	\$374.98	\$ 749.96	
Drawers for Prep Tables	8	\$259.20	\$ 2,073.60	
Folding Tables for Cafeteria	30	\$1,230.00	\$ 36,900.00	
14kw 200A Backup Generator	1	\$4,440.00	\$ 4,440.00	
Walk in Fridge & Freezer 8'x12' ea.	1	\$18,000.00	\$ 18,000.00	
Other Building Needs (require speculations from plans) below:			\$ 100,298.95	
Electrical outlets available in middle of kitchen and throughout				

## BUDGET JUSTIFICATION - EQUIPMENT AND MOTOR VEHICLES

Period: July 1, 2015 to June 30, 2016

Spetic Tank				
Hood for Venting				
Ceiling Ventilation System				
Ramps				
Disposal & Grease Trap				
Office Space 8'x6'				
Double Doors				
Floor System - Rubbert Tile				
Wall System - stainless steel or plastic				
			\$	-
<b>TOTAL:</b>	<b>67</b>		<b>\$</b>	<b>215,000.00</b>

JUSTIFICATION/COMMENTS:

DESCRIPTION OF MOTOR VEHICLE	NO. OF VEHICLES	COST PER VEHICLE	TOTAL COST	TOTAL BUDGETED
			\$	-
			\$	-
			\$	-
			\$	-
<b>TOTAL:</b>				

# BUDGET JUSTIFICATION - EQUIPMENT AND MOTOR VEHICLES

Period: July 1, 2015 to June 30, 2016

JUSTIFICATION/COMMENTS:



## BUDGET JUSTIFICATION - CAPITAL PROJECT DETAILS

Period: July 1, 2015 to June 30, 2016

Applicant: Friends of the Volcano School of Arts

FUNDING AMOUNT REQUESTED						
TOTAL PROJECT COST	ALL SOURCES OF FUNDS RECEIVED IN PRIOR YEARS		STATE FUNDS REQUESTED	OF FUNDS REQUESTED	FUNDING REQUIRED IN SUCCEEDING YEARS	
	FY: 2013-2014	FY: 2014-2015	FY:2015-2016	FY:2015-2016	FY:2016-2017	FY:2017-2018
PLANS			25000			
LAND ACQUISITION			0			
DESIGN			10000			
CONSTRUCTION			250000			
EQUIPMENT			215000			
<b>TOTAL:</b>			<b>500,000</b>			
<b>JUSTIFICATION/COMMENTS:</b>						

# GOVERNMENT CONTRACTS AND/OR GRANTS

Applicant: Friends of the Volcano School of Arts & Sciences

	CONTRACT DESCRIPTION	EFFECTIVE DATES	AGENCY	GOVERNMENT ENTITY (U.S. / State / Haw / Hon / Kau / Mau )	CONTRACT VALUE
1.	None for this project.				
2.					
3.					
4.					
5.					
6.					
7.					
8.					
9.					
10.					
				TOTAL	

**DECLARATION STATEMENT OF  
APPLICANTS FOR GRANTS PURSUANT TO  
CHAPTER 42F, HAWAII REVISIED STATUTES**

The undersigned authorized representative of the applicant certifies the following:

- 1) The applicant meets and will comply with all of the following standards for the award of grants pursuant to Section 42F-103, Hawaii Revised Statutes:
  - a) Is licensed or accredited, in accordance with federal, state, or county statutes, rules, or ordinances, to conduct the activities or provide the services for which a grant is awarded;
  - b) Complies with all applicable federal and state laws prohibiting discrimination against any person on the basis of race, color, national origin, religion, creed, sex, age, sexual orientation, or disability;
  - c) Agrees not to use state funds for entertainment or lobbying activities; and
  - d) Allows the state agency to which funds for the grant were appropriated for expenditure, legislative committees and their staff, and the auditor full access to their records, reports, files, and other related documents and information for purposes of monitoring, measuring the effectiveness, and ensuring the proper expenditure of the grant.
- 2) If the applicant is an organization, the applicant meets the following requirements pursuant to Section 42F-103, Hawaii Revised Statutes:
  - a) Is incorporated under the laws of the State; and
  - b) Has bylaws or policies that describe the manner in which the activities or services for which a grant is awarded shall be conducted or provided.
- 3) If the applicant is a non-profit organization, it meets the following requirements pursuant to Section 42F-103, Hawaii Revised Statutes:
  - a) Is determined and designated to be a non-profit organization by the Internal Revenue Service; and
  - b) Has a governing board whose members have no material conflict of interest and serve without compensation.

Pursuant to Section 42F-103, Hawaii Revised Statutes, for grants used for the acquisition of land, when the organization discontinues the activities or services on the land acquired for which the grant was awarded and disposes of the land in fee simple or by lease, the organization shall negotiate with the expending agency for a lump sum or installment repayment to the State of the amount of the grant used for the acquisition of the land.

Further, the undersigned authorized representative certifies that this statement is true and correct to the best of the applicant's knowledge.

Friends of the Volcano School of Arts &  
Sciences

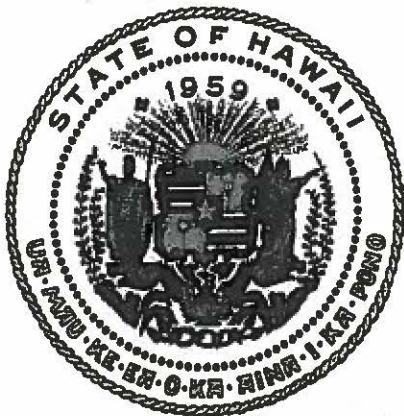
\_\_\_\_\_  
(Typed Name of Individual or Organization)

\_\_\_\_\_  
(Signature)

Daryl L. Smith  
(Typed Name)

1/14/15  
\_\_\_\_\_  
(Date)

Chair  
(Title)



## Department of Commerce and Consumer Affairs

### CERTIFICATE OF GOOD STANDING

I, the undersigned Director of Commerce and Consumer Affairs of the State of Hawaii, do hereby certify that

**FRIENDS OF THE VOLCANO SCHOOL OF ARTS & SCIENCES**

was incorporated under the laws of Hawaii on 03/01/2000 ;  
that it is an existing nonprofit corporation; and that,  
as far as the records of this Department reveal, has complied  
with all of the provisions of the Hawaii Nonprofit Corporations  
Act, regulating domestic nonprofit corporations.

IN WITNESS WHEREOF, I have hereunto set  
my hand and affixed the seal of the  
Department of Commerce and Consumer  
Affairs, at Honolulu, Hawaii.

Dated: January 15, 2015

Interim Director of Commerce and Consumer Affairs

