

House District 5

Senate District 3

THE TWENTY-EIGHTH LEGISLATURE  
APPLICATION FOR GRANTS  
CHAPTER 42F, HAWAII REVISED STATUTES

Log No: \_\_\_\_\_

For Legislature's Use Only

Type of Grant Request:

GRANT REQUEST - OPERATING

GRANT REQUEST - CAPITAL

"Grant" means an award of state funds by the legislature, by an appropriation to a specified recipient, to support the activities of the recipient and permit the community to benefit from those activities.

"Recipient" means any organization or person receiving a grant.

STATE DEPARTMENT OR AGENCY RELATED TO THIS REQUEST (LEAVE BLANK IF UNKNOWN): \_\_\_\_\_

STATE PROGRAM I.D. NO. (LEAVE BLANK IF UNKNOWN): \_\_\_\_\_

1. APPLICANT INFORMATION:

Legal Name of Requesting Organization or Individual:  
Friends of Kona Pacific Public Charter School

Dba: \_\_\_\_\_

Street Address:  
79-7595 D Mamalahoa Hwy, Kealahou, HI 96750-7909

Mailing Address:  
PO Box 115, Kealahou, HI 96750-0115

2. CONTACT PERSON FOR MATTERS INVOLVING THIS APPLICATION:

Name CHRIS HECHT

Title Board Secretary

Phone # 808-895-3030

Fax # 808-322-4906

E-mail chris@kpccs.org

3. TYPE OF BUSINESS ENTITY:

- NON PROFIT CORPORATION INCORPORATED IN HAWAII
- FOR PROFIT CORPORATION INCORPORATED IN HAWAII
- LIMITED LIABILITY COMPANY
- OTHER
- SOLE PROPRIETORSHIP/INDIVIDUAL

6. DESCRIPTIVE TITLE OF APPLICANT'S REQUEST:

WEST HAWAII COMMUNITY KITCHEN

4. FEDERAL TAX ID # \_\_\_\_\_

5. STATE TAX ID #: \_\_\_\_\_

7. AMOUNT OF STATE FUNDS REQUESTED:

FISCAL YEAR 2016: \$ 1,200,000

8. STATUS OF SERVICE DESCRIBED IN THIS REQUEST:

- NEW SERVICE (PRESENTLY DOES NOT EXIST)
- EXISTING SERVICE (PRESENTLY IN OPERATION)

SPECIFY THE AMOUNT BY SOURCES OF FUNDS AVAILABLE AT THE TIME OF THIS REQUEST:

STATE \$ 1,200,000  
 FEDERAL \$ 0  
 COUNTY \$ 0  
 PRIVATE/OTHER \$ 0

TYPE NAME & TITLE OF AUTHORIZED REPRESENTATIVE:

\_\_\_\_\_  
AUTHORIZED SIGNATURE

CHRIS HECHT, BOARD SECRETARY  
NAME & TITLE

1/29/15  
DATE SIGNED





---

## APPLICATION FOR GRANT IN AID 2015

### I. Background and Summary

#### 1. Applicant Background

On behalf of the West Hawai'i community, Friends of Kona Pacific Public Charter School (Friends) respectfully requests a \$1.2 million capital grant from the State of Hawai'i for planning and construction of West Hawaii's first community kitchen. The kitchen will house our community food service, which serves the students of Kona Pacific Public Charter School, and also provides critical nutritional support to hundreds of at-risk children and elders. The community kitchen will also be used by local farmers for value-added processing.

Friends is a 501c3 nonprofit corporation, founded in 2006 as an affiliated support organization for Kona Pacific Public Charter School (Kona Pacific).

Kona Pacific offers a comprehensive Waldorf education with a focus on Hawaiian cultural and agricultural education. The school is located on 40 acres of rich agricultural lands just above the Kona Community Hospital in Kealahou on Hawai'i Island. Since opening in Fall 2008, Kona Pacific and Friends of Kona Pacific have successfully:

- Grown from a small school serving 96 students into a thriving school and community center serving 230 students;
- Become the only public Waldorf school in Hawai'i;
- Become the first Title I Waldorf school in the United States;
- Been awarded \$3 million in USDA Rural Development funding to purchase the 40-acre site on which the campus is located, and built 6 new classrooms and a ball field;
- Founded the W.H.O.L.E. Food Service, West Hawaii's only federally approved food service vendor, providing Universal Breakfast and lunch to Kona Pacific students, 68% of whom qualify for free or reduced price.
- With community partners Head Start, Early Head Start, Meals on Wheels, Hawai'i County Parks and Recreation, and Punana Leo o Kona preschool, we feed an additional 250 other at-risk West Hawai'i residents from age 9 months to 90 years;
- Become a model school for the state's Fresh Fruits and Vegetable program, serving a locally grown, organic fresh fruit or vegetable each morning to all students;
- Become the first school in Hawai'i to serve universal breakfast in the classroom – all students eat a nutritious breakfast for free at the start of the school day;

- Implemented a highly successful AmeriCorps program, with seven AmeriCorps volunteers providing labor for farm development while receiving valuable training;
- Partnered with the Natural Resources Conservation Service (NRCS) in the development of the first commercial “food forest park” in West Hawai‘i;
- Strengthened charter schools locally and nationally through service on the Hawai‘i Public Charter Schools Network board, Hawai‘i State Charter School Commission, and Alliance for Public Waldorf Education.
- Created critically needed economic development for our community: 40 full time and 25 part time jobs and an operational budget that adds more than \$2 million annually to our local economy.

By the end of this proposed 12-month project, we will begin operating West Hawaii’s only nonprofit community kitchen, which will be the first project nationally to combine school food production with value-added processing in one shared facility. The economy of combining these two activities in one facility is compelling, and we are optimistic that the synergy between these two vital community activities will produce benefits beyond what we can now imagine.

About Friends. Friends’ operations are based on our 40-acre property, the Kanaeue Learning Center, located near the town of Kealahou, district of South Kona, on Hawai‘i Island. The 40-acre site hosts Kona Pacific Public Charter School, a production farm, and several other educational and social service initiatives.

Friends’ mission is to support the continuing development and operations of Kona Pacific, and to develop sustainable natural resource management systems and community-based food production and educational opportunities on the Kanaeue Learning Center.

Securing a permanent campus for Kona Pacific was the initial focus of Friends, and over the past 3 years we have successfully purchased our 40-acre property and expanded the campus, tripling the classroom space in response to enrollment demand. Additional projects currently in development include increasing the production of the 13-acre farm, restoring a 5-acre section of the ancient Kona Field System for cultivation of traditional Hawaiian foods, and planting a demonstration forest of native trees, with trails and interpretive signage.

Friends’ strategic plan leverages the Kanaeue Learning Center property to develop community-based educational initiatives that provide numerous educational benefits to the children of Kona Pacific and other schools, and a diverse range of economic and social benefits to our rural, underserved community.

Currently, community events are regularly hosted on site, including educational presentations, concerts and other performing arts, and children’s recreation programs.

The property is also used daily by the employees of Kona Community Hospital and the Kona Courthouse, which are located immediately makai (downhill) from the project site. These neighbor staff members utilize the existing rock roads and trails on the property for health

benefits and quiet time during their work breaks. Our Kona community is significantly under-served in terms of public parks and natural resource use areas. The Kanaeue Learning Center provides open space and recreational benefits for our community at no cost to the state or county.

Friends has demonstrated the ability to successfully identify, assess, and respond to community needs by leveraging our resources on behalf of the community we serve. This proposal for the construction of a non-profit community kitchen is an essential component of our greater vision of service to our rural, under-served community.

It is important to note that Friends has already successfully secured the most costly part of this facilities development project, the real property on which the community kitchen will be built. The requested GIA funds will leverage that success, capitalizing on the momentum already developed.

About Kona Pacific Public Charter School. Kona Pacific Public Charter School was established by an act of the Charter School Review Panel in July 2008 and opened its doors to students that Fall. Kona Pacific serves a student body that is representative of the diversity of our community.

In economically depressed South Kona, there is a particular need for *public* education opportunities. As of the 2010 U.S. Census, the percentage of school-age children living in South Kona in households that were considered not to be self-sufficient was 44%. These families are unable to explore private schooling options. In this context, the need for non-traditional public school options in South Kona is apparent. Kona Pacific is well suited to meet this need for a non-traditional school that can serve residents with a diverse range of socio-economic backgrounds.

Kona Pacific offers a developmentally appropriate education that integrates Hawaiian cultural and agricultural studies into a Waldorf academic curriculum. The school's socially inclusive learning environment enables students to achieve high standards, while nurturing a strong sense of compassion and community responsibility – inspiring the students not only to successfully meet the future, but also to help shape it.

Each year, Kona Pacific provides educational services to 230 students, as well as important supplemental social services to more than 100 school families.

Kona Pacific's 100% enrollment the last two years and 98% historical enrollment clearly demonstrate the school's success at providing academic and learning support services to the community. These enrollment figures would be considered outstanding for any school, but are extraordinary for a period that includes the founding year, with subsequent annual growth of at least 25%. Throughout that time, student retention averaged 88%, also an extremely high figure in a state with a very transient population and resultant student attrition. This is also an indicator of the high level of parent satisfaction with the school.

In addition, Kona Pacific has become a pioneer in the field of school and community nutrition. Kona Pacific was the first school in Hawai'i to offer universal breakfast in the classroom. Universal breakfast in the classroom, where all children eat a nutritious breakfast for free in their classroom at the start of the school day, is an important development in public education that is quickly gaining momentum in many communities across the country. It has been shown to support academic achievement, improve children's health and well-being, help struggling families and those who must commute a long distance to school save time and money, and eliminates the stigma of school meals served "only to poor children."

## **2. Goals and Objectives Related to the Request**

The proposed West Hawai'i Community Kitchen is one integral component of a larger framework of leveraging our existing resources in order to provide the highest level of service possible to our community.

***The Project Goal is to increase our capacity to feed community members who are at risk for hunger by constructing a community food service kitchen, and to provide a value-added processing kitchen for our local farmers, who currently do not have access to such a facility.***

The project objective, expressed in S.M.A.R.T. (Specific, Measurable, Achievable, Realistic and Time-bound) terminology, is:

***Objective:*** By the end of the 12-month project, a community food service kitchen will be constructed on Friends' 40-acre Kanaeue Learning Center.

## **3. Public Purpose and Need to be Served**

The public purposes that will be served by this project fall into two categories: 1) Social Service needs and 2) Educational purposes.

***Social Service.*** We strive towards a greater vision of service, reaching beyond our core educational mission to meet essential needs of our rural, underserved community. The most critical social service program provided to our community is our food service. Our W.H.O.L.E. (West Hawai'i Ono Local Eats) Food Service, currently operating out of costly leased kitchen facilities, provides meals for 630+ vulnerable community members at risk for hunger and food insecurity.

The W.H.O.L.E. Food Service program launched in Fall 2012, when the previous nutrition program vendor ceased operations with just 30 days notice. At the time, they were the only federally approved food service vendor for nutrition programs in West Hawai'i, and their closure endangered the health and well-being of hundreds of impoverished citizens, mostly young children and elders. We immediately responded to this emergency need by developing a new food service in time to ensure that none of these at-risk residents went hungry.

The need for the food service itself is well documented. Food insecurity in our small rural community has become a public health crisis, and strong proactive approaches are required to

ensure that the most vulnerable members of our community, particularly children and the elderly, do not continue to go hungry.

Throughout all of Hawaii's islands, a shared set of complex conditions, including high rates of poverty and homelessness, and low rates of educational success, have contributed to the development of a serious public health crisis. A 2012 study by the North Hawai'i Outcomes Project, "Community Health Profile Hawai'i County," highlights many of the realities of Hawai'i Island's diet and hunger related indices.

Hawai'i Island has higher death rates than other islands in the state across all categories, including heart disease and stroke. The rates of adult and child poverty are much higher than the state average, and the per capita income is lower than average. Currently, Hawai'i Island, a very rural island with a population density of only 45 persons per square mile, has a shocking poverty rate of almost 20% – nearly one in five of our residents living below the poverty level.

The ongoing economic struggles of families in Hawai'i are well known, and these challenges have led to a 40% increase in the need for emergency food assistance since 2006. The Hawai'i Food Bank estimates that statewide, 15% of our population receives emergency food assistance through their agency. While faith-based and other organizations have stepped up to help with the enormous task of feeding the homeless, the working poor and elderly continue to be under-served.

The W.H.O.L.E. Food Service is an essential social service that we are able to operate with efficiencies of cost and manpower while achieving quality outcomes. In the absence of this program, the burden of ensuring that our children and elders do not go hungry would fall largely on the network of state-operated social and human service agencies. Our project represents a cost-effective, local and sustainable approach to providing these services.

The W.H.O.L.E. Food Service feeds Kona Pacific students daily, 68% of them for free or reduced price. Many of these children consume a significant portion of their daily nutrition at school; we provide them a healthy morning snack, lunch, and after school snack.

In partnership with community social service organizations, the food service feeds an additional 400 other at-risk West Hawai'i residents, from nine months to 90 years old. The menu provides optimally healthy meals, made with fresh, locally-grown ingredients wherever possible, all scratch cooking, and no added refined flours or sugars.

Our partner organizations purchase complete meals, which are reimbursed by state and federal programs such as the National School Lunch Program. The price for a school lunch with milk, for example, delivered to the client's site, is \$5.00. The price represents the actual cost of the meal; we operate the program to meet urgent community need and aim for break-even while doing so.

For the school lunch example above, partner organizations are reimbursed \$3.68. The partner organization subsidizes the difference between what they receive for reimbursement and the

price of the meal, and that subsidy can be challenging for some schools and community service agencies. Recognizing this challenge to our partner organizations, we actively control costs to keep prices as low as possible, while offering very high quality, nutritious meals. The closer that our price approaches the reimbursement rate offered, the more meals our partner organizations can purchase and provide to citizens in need.

**The requested Grant in Aid funding for construction of the kitchen will directly and immediately remediate the high cost of facilities, allowing us to lower prices, and feed additional at-risk citizens.**

Our W.H.O.L.E. Food Service program is the only approved vendor of federally reimbursed meals in West Hawai'i. Having launched a successful program, we are uniquely positioned and eager to increase services and feed more citizens at risk for food insecurity. Expansion will be facilitated by reducing the price charged to our partner organizations. We have identified two areas with the potential for significant cost savings: 1) lowering the facilities cost for food production, and 2) creating an integrated regional supply chain that will reduce food costs for the high-quality ingredients used in our menus.

We are also leveraging the tremendous agricultural resource of our 40-acre property, developing a comprehensive farm to school food service initiative to radically increase production on the 13-acre farm. The farm will provide a large proportion of the ingredients used each day by the food service, at a substantially lower cost than market price, and the savings will enable a reduction in meal pricing. Fresh farm products will also be sold directly to low-income residents.

Currently, we are operating a highly successful AmeriCorps program on the learning center property, with seven AmeriCorps volunteers providing labor for farm development while receiving valuable education and training in the skills necessary to develop a viable organic production farm. The Natural Resources Conservation Service (NRCS) is also partnering with us in the development of the first commercial "food forest park" in West Hawai'i.

**The value-added production facility will allow local family farms to increase the value of their agricultural production, strengthening and supporting the regional agricultural economy, and will contribute to the success of our food service as well.**

Several USDA studies emphasize the importance of nonprofit community kitchens in supporting local agriculture, family farms and small businesses. On Hawai'i Island, there are only three of these kitchens: one in Hilo, and two in Hamakua, all on the East Side of the island, nearly three hours' drive time from Kona.

Value-added products that can be incorporated into the food service menus will be purchased at significant savings, further reducing food costs. In addition, the revenue generated from renting the kitchen facilities to local farmers and other small food businesses will positively affect the program's bottom line and further enable us to keep the meal price as low as possible.

Educational purposes. The public benefit of charter schools, particularly in regard to educational innovation, is well recognized on a national level. U.S. Education Secretary Arne Duncan has stated that, "charter schools are laboratories of innovation in education, quality, accountability, cost efficiency and transparency." The administration urges charter schools to scale their successful innovations throughout the education system in order to facilitate overall improvement in the country's academic environment.

Of Hawaii's 34 charter schools, 14 are located on Hawai'i Island, providing important school choice for families while acting as incubators for innovation and best practices in education. Kona Pacific embraces the philosophy of a rising tide lifting all boats, and is firmly committed to improving the overall educational landscape of our island communities. With this desired result in mind, we actively develop and disseminate best practices on an ongoing basis. The school administration collaborates closely with and provides assistance to other Hawai'i public charter schools, and has developed both a state and national reputation as a source of innovative strategies for successful operation.

The school's sustainable agriculture educational program will benefit greatly from the presence of a community kitchen. A school survey conducted in December of 2013 asked faculty, students and the parent community for their feedback about the school programs, and among all sectors of the school community, the existing *Hana Mala* (farming and gardening) curriculum had the overwhelmingly highest approval rating: 100% of faculty, 92% of parents, and 90% of students.

The school's gardening program itself has multiple benefits for the local economy, as identified in the Rocky Mountain Institute's 2007 "Island of Hawai'i Whole System Project Phase I Report":

- Hawai'i school gardens make fresh local food fun, building life-long customers for food like taro and fresh greens. This is similar to the way McDonald's builds like-long customers by making their meals fun for children with toys and play parks;
- School gardens expose children to foods, such as salads, and ways of preparing foods that they may not be exposed to at home;
- School gardens teach children to appreciate the complexity of the food chain and to consider where their food originates, beyond the supermarket and
- School gardens give children a taste of the profession of farming, teaching the next generation of farmers sustainable methods.

The incorporation of the proposed kitchen facilities into the school's farming and gardening curriculum will leverage these existing benefits to include developing food preparation skills and a deeper appreciation for all the layers of our local farm-to-table food chain.

Friends and Kona Pacific are the only educational organizations in the State of Hawai'i that operate a community food service, and recently garnered a "New Best Practices" award for the



program. As the anchor client for the proposed kitchen facilities, the food service will provide an essential economic engine powering the sustainability of facility operations.

#### **4. Target Population to be Served**

The community to be served by this project includes the districts of North and South Kona, and the southern parts of Ka'u. The area's population, according to the 2010 U.S. Census, is 52,635, with a diverse ethnic and racial mix, of which White (44%), Asian (20%) and Native Hawaiian (18%) are the dominant representatives.

West Hawai'i, and South Kona in particular, are rapidly growing. Between 2000 and 2010, South Kona experienced the highest rate of growth (19%) of all districts in Hawai'i County. This growth brings with it an increased need for educational resources. Demographic data from the Department of Education shows that within Kona Pacific's service area, K-5 student population growth is projected to be slightly greater than 4% annually. This growth, resulting in a student population increase of 50 elementary students per year in our service area, represents a burgeoning need.

The community demographics regarding food insecurity, as described above, indicate that up to 32% of our community members, or more than 11,700 individuals, suffer from food insecurity, and approximately 40% of these – mostly children and elders – are potential beneficiaries of our food service program.

The community kitchen facilities will also serve the 275+ small family farms in our rural community. It can be very challenging for a family to make a living from commodity crops. Most farmers sell their produce in the wholesale market, which limits the farmer's share of income, or at local farmers' markets, which can bring more income but have another set of limitations.

For many small farmers, the ability to control their product all the way from seed to final processed product makes the difference between financial viability, or failure.

This can be seen on Hawai'i Island in the Kona coffee industry, where an ever-increasing number of small farmers take their coffee beans all the way to a roasted, packaged and labeled product. They may conduct all the stages of processing themselves, or they may have one or two stages custom-processed on their behalf. This level of control enables the farmer to maximize their profit, and in this example it has created a vibrant industry of more than 300 estate coffees, each of them beautifully labeled and expressive of that coffee farmer's commitment to producing the finest quality of coffee possible.

In much the same way, community kitchens that have value-added processing capabilities tailored to the needs of local farmers strongly support the local agricultural economy. They have been shown to boost local job creation, diversify the local economy, and transfer ideas and technology from universities or larger companies. However, currently there are no community kitchens in West Hawai'i.

## **5. Geographic Coverage**

Friends and Kona Pacific serve a geographic area that stretches roughly 50 miles along the western side of Hawai'i Island, from Kailua-Kona in the north to Ocean View in the south, and includes the towns of Keauhou, Honalo, Kainaliu, Kealahou, Captain Cook, and Honaunau – approximately a 100-mile radius.

Beyond the families and individuals served by Kona Pacific's educational and social service programs and the WHOLE Food Service, a significant part of Friends' mission is to develop and disseminate best practices and share how-to methodologies with collegial groups of educators and program leaders wanting to implement new strategies. Kona Pacific is actively involved in the Hawai'i Public Charter Schools Network and the Alliance for Public Waldorf Education, both of which provide dynamic platforms for the sharing of resources, strategies and best practices, thus extending the geographic coverage of our project and its outcomes throughout Hawai'i and the U.S.A.

## **II. Service Summary and Outcomes**

### **1. Scope of Work, Tasks and Responsibilities**

In order to accomplish the project goal of constructing a community food service kitchen, Friends will engage a project team with proven qualifications and expertise to complete all project activities. These individuals are described in detail in Section V. The core team of Project Manager, Project Architect, and Site Manager will oversee the general contractors selected via open bidding to carry out the construction activities.

The project scope of work includes four distinct stages, each of which entails a number of activities:

- 1) Design, Permits and Bids
- 2) Site Preparation
- 3) Infrastructure construction
- 4) Building construction

Details of these project elements may be found in the table on the following page.

Component	Purpose	Approx. Size	Estimated Cost
Community Food Service Kitchen	Food service breakfast, lunch and snack production; processing of produce from school farm; available to local farmers for value-added processing	3,000 sq. ft	\$700,000
Community Kitchen Equipment	Equipment to support food service and value-added kitchen uses	n/a	\$300,000
Infrastructure	Utilities, access road, parking lot	n/a	\$200,000

The Community Food Service Kitchen was included in the Master Plan & Schematic Design process for the 40-acre Kanaeue Learning Center, and is ready for development.

Environmental studies, archeological studies, traffic studies, and related processes have already been completed as part of the Special Use Permit process, allowing for an expedited timeline for this project. The project team has a successful track record of rapidly completing complex projects ahead of schedule and under budget. The Project Work Plan's aggressive schedule reflects our confidence in our experienced team. The plan is described in detail in the following tables, one for each phase of the overall scope of work:

**Design, Permits and Bids**

Activities	Lead Position(s) Responsible	Begin	End
Master Plan & Schematic Design	Project Manager		Complete
Architectural Plans	Architect	6-1-15	8-1-15
Building Permits	Project Manager	8-1-15	10-1-15
Bids Out	Project Manager	8-15-15	9-15-15
Bid Review and Selection	Project Manager/Architect	9-15-15	9-30-15
Contract Finalization/Execution	Project Manager	10-1-15	10-15-15

**Site Preparation**

Activities	Lead Position Responsible	Begin	End
Grading	Site Manager, Contractor	7-1-15	8-11-15
Drainage	Site Manager, Contractor	8-12-15	9-22-15

**Infrastructure construction**

Activities	Lead Position(s) Responsible	Begin	End
Water	Site Manager, Contractor	10-1-15	11-15-15
Electric	Site Manager, Contractor	11-15-15	12-15-15
Septic	Site Manager, Contractor	12-15-15	1-25-16
Propane tank & gas line	Site Manager, Contractor	1-25-16	2-25-16
Road, Parking	Site Manager, Contractor	10-1-15	2-1-16

**Building Construction**

Activities	Lead Position(s) Responsible	Begin	End
Kitchen construction	Project Manager, Contractor	1-10-15	4-30-16
Kitchen equipment fitting	Project Manager	4-1-16	4-30-16

**2. Projected Annual Timeline**

As detailed in the table above, the project is scheduled to commence on June 1, 2015 and be completed by May 30, 2016. This timeline is based on the outcome of our most recent campus expansion project, which was completed in four and a half months and included site preparation, infrastructure development, and construction of two buildings with a total of 6,000 sq. ft. of classroom space, as well as doubling restroom facilities.

**3. Quality Assurance and Evaluation Plans**

Friends is committed to the highest level of excellence, and has a set of comprehensive policies in place to ensure that all compliance, reporting, monitoring, and evaluation activities are carried out for grant projects. These rigorous policies have been in continuous use for almost a decade, supporting our excellent track record of successful projects.

The Friends board will oversee all stages of the project and ensure that the project moves forward on schedule and in compliance with all grant requirements. The Project Manager and Architect will review all bid proposals and make recommendations to the board according to Friends’ construction management policy. The Project Manager will make weekly progress reports to the board and ensure that any unanticipated project challenges are resolved optimally.

The Project Manager and Site Manager will work together with the Architect to 1) review the progress of construction; 2) review the quality of construction; 3) process clarification requests and product submittals; 4) approve contractor payment requests; 5) provide ongoing and final inspections of all construction.

The Project Manager will deliver monthly written project reports to the entire project team and the Friends board, and will include documentation of project progress and financial updates. These monthly reports will enable the project team to continually monitor the strengths and any weaknesses in project implementation, and will support these critical project elements:

- The team’s capacity to understand and interpret the design and program requirements of the project;
- The ability to remain within the established budget through all project phases;
- The capacity for management and review of contractor’s work, and that of all consultants and subcontractors, and
- Effective communication across all project roles and activities.

**4. Measures of Effectiveness**

The primary performance indicators used for measuring the success of this project will be the standard construction evaluation tools involving analyses of timeline compliance, cost predictability, and construction quality.

Adherence to the stated project timeline and estimated costs will be evaluated quarterly, with adjustment in project activities made as necessary. Quality control will also be an ongoing measure; the Project Manager, Site Manager, and Architect will inspect contractor progress closely to ascertain that quality of materials and construction are maintained throughout the life of the project.

**III. Financial**

**1. Budget**

Friends has submitted a budget utilizing the GIA budget forms, which are included with this application.

**2. Anticipated Quarterly Funding Requests**

Quarter 1	Quarter 2	Quarter 3	Quarter 4	Total Grant
\$400,000	\$300,000	\$250,000	\$250,000	\$1,200,000

**3. Fiscal Year 2016 Funding Sources**

Ongoing revenue sources include lease rent from the school campus and five houses (reserved for school and farm staff) that are located on the property, as well as development activities.

Friends has a successful history of fund development, originally for school startup operations, subsequently for capital projects. Long-term relationships with repeat funders provides a stable inflow of financial resources to support our facilities-building program.

We plan to leverage this Grant in Aid to attain further funding from regional private philanthropic funders such as the Weinberg, Atherton, and Omidyar Foundations for support in finishing the Kona Pacific campus, including landscaping, playground expansion and additional administrative office space.

**4. State and Federal Tax Credits**

Not applicable.

**5. Balance of Unrestricted Current Assets**

As of December 30, 2014, the balance of unrestricted current assets was \$24,955. Total assets were \$3,115,923.

## **IV. Experience and Capabilities**

### **A. Necessary Skills and Expertise**

Friends has an extensive and reliable base of experience and relevant skills in the management of federal funds and major capital projects, and will retain experienced, expert consultants for specific stages of the project.

Organizational Capacities. Friends is governed by a six-member Board of Directors who are representative of the community to be served by this project and bring a wide range of relevant skills and experience in project development and management. The board includes professional educators with facilities development experience, financial advisors and managers, Native Hawaiian cultural practitioners, and an agriculture expert. The Friends board manages an annual operational budget averaging roughly \$240,000, which is substantially augmented by grants and contributions for specific projects.

Friends has a high level of fiduciary capacity, with comprehensive financial policies and procedures that reflect best practices for nonprofit organizations, and a perfect record of successfully managing government funds.

### Recent Projects

In October 2006, the state of Hawai'i awarded Friends \$150,000 for initial research and feasibility studies of the development of Kona Pacific Public Charter School. Friends' proposal was one of three funded out of thirteen applicants statewide. This preliminary work was so successful that Friends was encouraged by the leadership of the state Department of Education to apply directly to the federal government for further funding. The project audit confirmed that all state funds were expended appropriately, and the audit was closed with no findings.

In October 2007, the USDE awarded Friends \$300,000 for startup research and development of Kona Pacific Public Charter School. Final reports showed that all federal funds were expended in service of the project objectives, with substantial community benefit. An example of the value returned on investment is that the school's charter was scored at 96%, the highest score for a charter submission in Hawai'i to date.

In April 2011, Friends was awarded a \$3M direct loan by the USDA Rural Development Community Facilities program. Friends purchased the previously leased 40-acre parcel on which the 2.5-acre school campus is located, and constructed two new school buildings containing six classrooms, which were completed in late 2012. The OMB A-133 audit confirmed that all federal funds were expended appropriately, and the audit was closed with no findings.

Recent grant-funded projects related to this request include the following:

Year	Funder	Project	Award
2013, 2014, 2015	Bill Healy Foundation	School Garden Program	\$6,000/year
2014	AmeriCorps (CNCS)	Farm to Food Service	\$46,500
2014	Hawai'i Appleseed Center	Universal Breakfast in the Classroom	\$25,000

Friends has, in the past three years, also received and successfully managed many grants that are not directly related to this request; a total of \$247,350 for diverse projects including playgrounds, family literacy programs, operational support and Title I programs.

Financial activities are conducted in accordance with generally accepted accounting principles, using QuickBooks to maintain accurate and secure financial records. Monthly reports are reviewed by the Financial Officer, and quarterly reports are presented to the full board for oversight.

Project Capacities. Friends has selected an experienced project team to carry out and oversee all project activities. Details of the team's capabilities and experience may be found in Section V.

## **B. Facilities**

The purchase of the 40-acre Kanaeue Learning Center in 2011, and the subsequent transfer from private ownership to public stewardship, was a significant benefit for the community and a milestone for Friends. The opportunity presented by community ownership of this valuable resource contains within it a challenge – to utilize the resource in a manner that provides the greatest benefit to the community. We are mindful of the *kuleana* (responsibility) to be led by our community in determining the best and highest uses of the land.

The previous owner obtained a Special Use Permit (SUP) in 2001 for construction of school facilities and related improvements on the property. The SUP also affirmed the plan to further develop agricultural facilities on the property. In 2012, the Hawai'i County Planning Department granted a Special Permit Extension, allowing construction activities through August of 2021.

Existing campus facilities, which Friends leases to the school, include a 2.5-acre campus with 6 buildings that house 10 classrooms, 4 bathrooms, and administrative offices, for a total of 9,300 sq. ft. The campus has passed multiple ADA compliance reviews, exceeding federal accessibility requirements. The school site also has more than 15,000 sq. ft of developed playground space, featuring two nature-based playgrounds and a ball field. Semi-permanent structures house extended-day programs, reading and study areas, a Hawaiian studies hale, a special education classroom, and a school garden.

The proposed project is consistent with local land use planning. The Kanaeue Learning Center property falls within an area designated as Orchards on the General Plan Land use Pattern Allocation Guide (LUPAG) Map. The zoning for the property is Agricultural-5 acres (A-5a) with a State Land use Designation of Agricultural. "Agricultural products processing, major and minor" is a permitted use in Hawai'i County's Agricultural districts.

## **V. Personnel: Project Organization and Staffing**

### **A. Proposed Staffing, Staff Qualifications, Supervision and Training**

Friends has a solid track record of successful financing and management of construction projects of this scale. We have successfully completed two construction phases of the campus, both of them ahead of schedule and under budget, and the same reliable, experienced staff will manage this project.

Ultimate responsibility and accountability for project success rests with the Friends Board of Directors. The board will delegate day-to-day responsibility to the Project Manager, who will supervise all project staff.

#### **Project Staff**

*Project Manager.* Friends has selected as its project manager Mr. Chris Hecht. Mr. Hecht has successfully led the financing, design, and construction of all campus development to date. His experience in construction management and fiscal oversight of high value projects ensures productive use of project resources, efficient construction processes, and high quality finished product. The Project Manager provides oversight of all phases and aspects of the project, representing Friends in design meetings, developing the project budget, working with the Architect to review and select competitive construction proposals, overseeing construction, and supervising construction finances.

#### Contracted Staff

*Project Architect.* Mr. Rohn Marvick, AIA, will serve as architect for the project and will be responsible for all project design, engineering, and drafting of detailed construction documents. In addition he will guide selection of competitive construction proposals, and oversee construction. He has more than 25 years of architectural design experience and founded the Weingang Marvick & Associates architectural design firm in 2000. The partnership of architect Mr. Marvick and architectural designer Mr. Bill Weingang provides a high level of complete architectural services for projects ranging from up-scale custom residential to mid-size commercial ventures. Mr. Marvick has served as the architect for all previous Kona Pacific construction projects.

*Site Manager.* Friends' property manager Tom Howard will serve as the owner's day-to-day site representative, overseeing the daily activities of all project contractors. Mr. Howard has been responsible for oversight of all Kanaeue Learning Center improvement projects and property maintenance for more than 14 years. His current responsibilities include supervision,

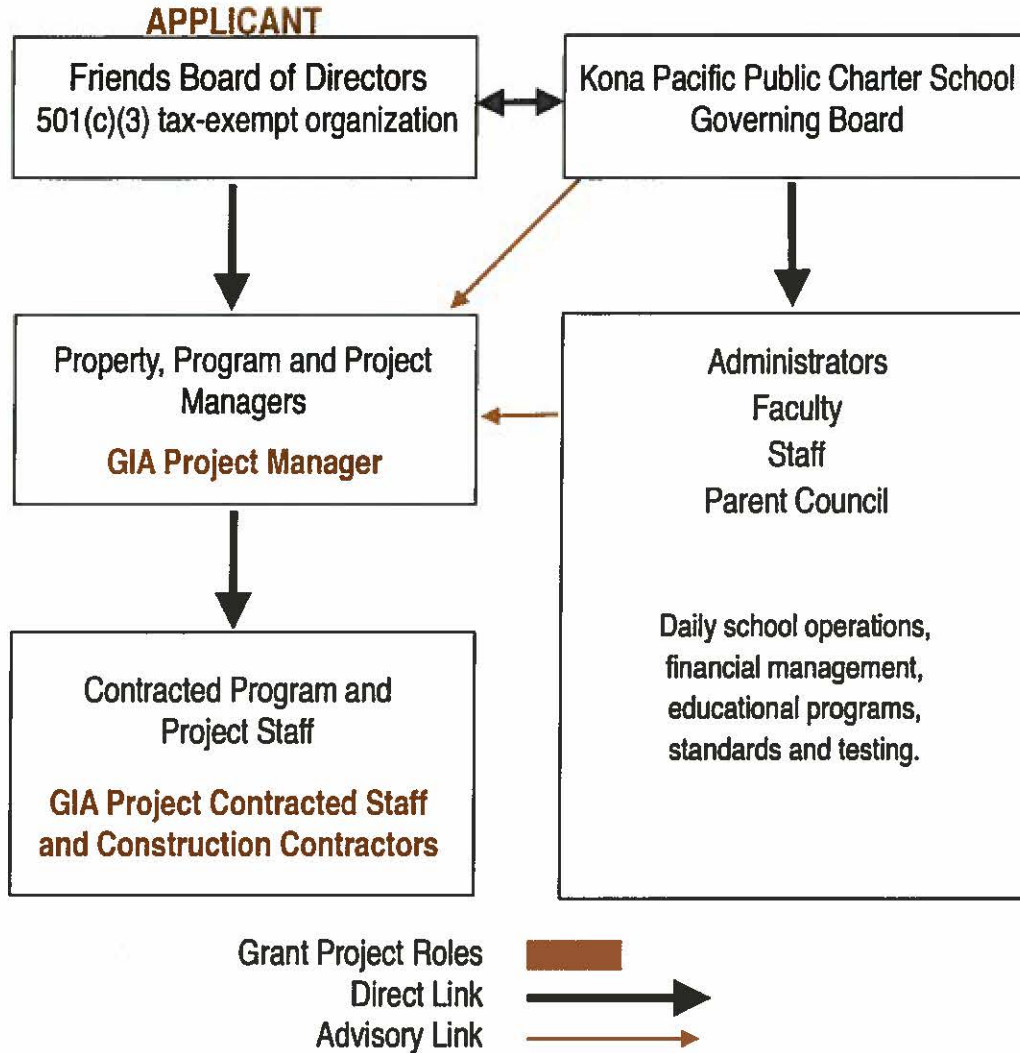


oversight and control of all on-site development and maintenance, hiring and supervising contractors, managing procurement and budget, maintenance and monitoring of the water system, farm operations, tree care and grounds keeping, and tractor operation and maintenance. He has served as Site Manager of the two previous construction phases on the property and has detailed knowledge of all site improvements to the property, including the placement of underground utilities and other infrastructure.

*Construction Contractors.* All procurement, including construction contractors, will comply with applicable state and federal procurement codes. Contractors will be selected through a competitive bidding process requesting, via public advertising, bids from at least three qualified bidders on the basis of identical sets of bidding documents. Friends' procurement policies include equal opportunity principles. The bidder selection process includes an analysis of each bidder's demonstrated management competency, financial condition, labor compliance, relevant experience, and safety record.

### **B. Organization Chart**

The chart on the following page illustrates the position of project staff and the lines of responsibility and supervision of project activities.



### C. Compensation

Friends does not compensate any officers, directors or employees. It is staffed by members of the Kona Pacific Public Charter School community who provide expert service pro bono.

## VI. Other

### A. Litigation

Not applicable.

### B. Licensure or Accreditation

Kona Pacific was duly chartered by the State Board of Education in 2008; Friends was founded in 2006 and awarded federal 501c3 tax exempt status in 2012.

**C. Federal and County Grants**

Friends has had one federal grant awarded since July 1, 2014, a \$46,500 AmeriCorps project award.

**D. Private Educational Institutions**

The requested funds will not be used to benefit a sectarian or non-sectarian private educational institution.

**E. Future Sustainability Plan**

The requested grant funds, if received by the applicant in fiscal year 2015-16, will enable the completion of a capital project, the West Hawai'i Community Kitchen. No further funds will be required for this project in subsequent years.

The grant-funded community kitchen will, in fact, have a strong positive impact on the long-term sustainability of the existing W.H.O.L.E. Food Service by lowering the operations cost.

**F. Certificate of Good Standing**

A Certificate of Good Standing from the DCCA dated June 30, 2014 is included in this application's EXHIBITS section.

# BUDGET REQUEST BY SOURCE OF FUNDS

Period: July 1, 2015 to June 30, 2016

Applicant: Friends of Kona Pacific PCS

BUDGET CATEGORIES	Total State Funds Requested (a)	Total Federal Funds Requested (b)	Total County Funds Requested (c)	Total Private/Other Funds Requested (d)
<b>A. PERSONNEL COST</b>				
1. Salaries	0			
2. Payroll Taxes & Assessments	0			
3. Fringe Benefits	0			
<b>TOTAL PERSONNEL COST</b>	<b>0</b>			
<b>B. OTHER CURRENT EXPENSES</b>				
1. Airfare, Inter-Island	0			
2. Insurance	0			
3. Lease/Rental of Equipment	0			
4. Lease/Rental of Space	0			
5. Staff Training	0			
6. Supplies	0			
7. Telecommunication	0			
8. Utilities	0			
9				
10				
11				
12				
13				
14				
15				
16				
17				
18				
19				
20				
<b>TOTAL OTHER CURRENT EXPENSES</b>	<b>0</b>			
<b>C. EQUIPMENT PURCHASES</b>	<b>300,000</b>			
<b>D. MOTOR VEHICLE PURCHASES</b>	<b>0</b>			
<b>E. CAPITAL</b>	<b>900,000</b>			
<b>TOTAL (A+B+C+D+E)</b>	<b>1,200,000</b>			
<b>SOURCES OF FUNDING</b>		Budget Prepared By:		
(a) Total State Funds Requested	1,200,000	Chris Hecht	808-895-3030	
(b) Total Federal Funds Requested		Name (Please type or print) <span style="float: right;">Phone</span>		
(c) Total County Funds Requested		[Redacted Signature]		
(d) Total Private/Other Funds Requested		1/29/15 Date		
<b>TOTAL BUDGET</b>	<b>1,200,000</b>	Chris Hecht, Board Secretary Name and Title (Please type or print)		



## BUDGET JUSTIFICATION - EQUIPMENT AND MOTOR VEHICLES

Period: July 1, 2015 to June 30, 2016

Applicant: Friends of Kona Pacific PCS

DESCRIPTION EQUIPMENT	NO. OF ITEMS	COST PER ITEM	TOTAL COST	TOTAL BUDGETED
Kitchen equipment	1.00	\$300,000.00	\$ 300,000.00	\$300,000
			\$ -	
			\$ -	
			\$ -	
			\$ -	
<b>TOTAL</b>	1		\$ 300,000.00	\$300,000

**JUSTIFICATION/COMMENTS:** A detailed list of proposed kitchen equipment can be found in the application's EXHIBITS section.

DESCRIPTION OF MOTOR VEHICLE	NO. OF VEHICLES	COST PER VEHICLE	TOTAL COST	TOTAL BUDGETED
			\$ -	
			\$ -	
			\$ -	
			\$ -	
			\$ -	
<b>TOTAL</b>				

**JUSTIFICATION/COMMENTS:**

## BUDGET JUSTIFICATION - CAPITAL PROJECT DETAILS

Period: July 1, 2015 to June 30, 2016

Applicant: Friends of Kona Pacific PCS

FUNDING AMOUNT REQUESTED						
TOTAL PROJECT COST	ALL SOURCES OF FUNDS RECEIVED IN PRIOR YEARS		STATE FUNDS REQUESTED	OTHER SOURCES OF FUNDS REQUESTED	FUNDING REQUIRED IN SUCCEEDING YEARS	
	FY: 2013-2014	FY: 2014-2015	FY:2015-2016	FY:2015-2016	FY:2016-2017	FY:2017-2018
PLANS			\$4,000			
LAND ACQUISITION			\$0			
DESIGN			\$60,000			
CONSTRUCTION			\$836,000			
EQUIPMENT			\$300,000			
<b>TOTAL:</b>			<b>\$1,200,000</b>			
<b>JUSTIFICATION/COMMENTS:</b> Land was acquired by applicant in 2011 using \$2M of federal direct loan funds.						

# GOVERNMENT CONTRACTS AND/OR GRANTS

Applicant: Friends of Kona Pacific Public Charter School: current government grant funded projects

	CONTRACT DESCRIPTION	EFFECTIVE DATES	AGENCY	GOVERNMENT ENTITY (U.S. / State / Haw / Hon / Kau / Mau )	CONTRACT VALUE
1.	Farm to Food Service Project	9-1-14 to 8-31-15	AmeriCorps (CNCS)	U.S. Federal	\$46,500
2.					
3.					
4.					
5.					
6.					
7.					
8.					
9.					
10.					
				TOTAL	\$46,500



**DECLARATION STATEMENT OF  
APPLICANTS FOR GRANTS PURSUANT TO  
CHAPTER 42F, HAWAI'I REVISED STATUTES**

The undersigned authorized representative of the applicant certifies the following:


- 1) The applicant meets and will comply with all of the following standards for the award of grants pursuant to Section 42F-103, Hawai'i Revised Statutes:
  - a) Is licensed or accredited, in accordance with federal, state, or county statutes, rules, or ordinances, to conduct the activities or provide the services for which a grant is awarded;
  - b) Complies with all applicable federal and state laws prohibiting discrimination against any person on the basis of race, color, national origin, religion, creed, sex, age, sexual orientation, or disability;
  - c) Agrees not to use state funds for entertainment or lobbying activities; and
  - d) Allows the state agency to which funds for the grant were appropriated for expenditure, legislative committees and their staff, and the auditor full access to their records, reports, files, and other related documents and information for purposes of monitoring, measuring the effectiveness, and ensuring the proper expenditure of the grant.
  
- 2) If the applicant is an organization, the applicant meets the following requirements pursuant to Section 42F-103, Hawai'i Revised Statutes:
  - a) Is incorporated under the laws of the State; and
  - b) Has bylaws or policies that describe the manner in which the activities or services for which a grant is awarded shall be conducted or provided.
  
- 3) If the applicant is a non-profit organization, it meets the following requirements pursuant to Section 42F-103, Hawai'i Revised Statutes:
  - a) Is determined and designated to be a non-profit organization by the Internal Revenue Service; and
  - b) Has a governing board whose members have no material conflict of interest and serve without compensation.

Pursuant to Section 42F-103, Hawai'i Revised Statutes, for grants used for the acquisition of land, when the organization discontinues the activities or services on the land acquired for which the grant was awarded and disposes of the land in fee simple or by lease, the organization shall negotiate with the expending agency for a lump sum or installment repayment to the State of the amount of the grant used for the acquisition of the land.

Further, the undersigned authorized representative certifies that this statement is true and correct to the best of the applicant's knowledge.

Friends of Kona Pacific Public Charter School

(Typed Name of Individual or Organization)



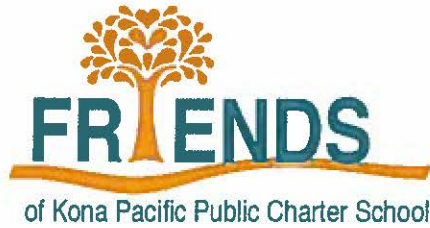
(Signature)  
Chris Hecht

1/29/15

(Date)  
Board Secretary

(Typed Name)

(Title)



---

## APPLICATION FOR GRANT IN AID 2015

### EXHIBITS

Project Information Overview (2 pages)

Maps of Project Location (2)

Site Plan

Kitchen Equipment List

Governor's Certificate of Special Recognition  
*Breakfast In the Classroom Program*

Hawai'i Public Charter Schools Network, "Creating New Best Practices" Award  
*W.H.O.L.E Food Service*

Friends of Kona Pacific Public Charter School Board Members

Letters of Support  
*Hawai'i Office of Child Nutrition Programs*  
*Hawai'i Farmers Union, Kona Chapter*

Certificate of Good Standing

**Mission Statement:** *To support the continuing development and operations of Kona Pacific Public Charter School, and to develop sustainable natural resource management systems and community-based food production and educational opportunities on the Kanaeue Learning Center property.*

## Grant In Aid 2015 Capital Request – Applicant Information Project Title: West Hawai'i Community Kitchen

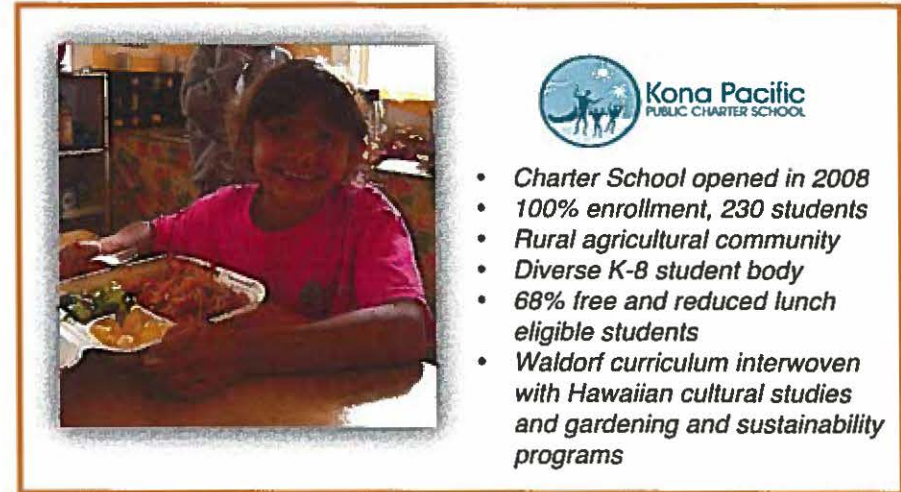
### APPLICANT

Friends of Kona Pacific Public Charter School  
P.O. Box 115, Kealahou, HI 96750-0115  
Contacts: Usha Kotner, *Director*  
808-322-4900, director@kppcs.org  
Chris Hecht, *Executive Director*  
808-895-3030, chris@kppcs.org

### ACCOMPLISHMENTS

Together, Friends and Kona Pacific PCS have successfully:

- Been awarded \$3 million in USDA Rural Development funding to purchase the 40-acre Kanaeue Learning Center, and built 6 new classrooms and a ball field;
- Founded the W.H.O.L.E. Food Service, West Hawaii's only federally approved food service vendor, providing Universal Breakfast and lunch to Kona Pacific students, 68% of whom qualify for free or reduced priced lunch;
- With community partners Head Start, Early Head Start, Meals on Wheels, Hawai'i County Parks and Recreation, and Punana Leo o Kona preschool, we feed an additional 250 at-risk West Hawai'i residents from age 9 months to 90 years;
- Become a model school for the state's Fresh Fruits and Vegetable program;
- Become the first school in Hawai'i to serve universal breakfast in the classroom – all students eat a nutritious breakfast for free at the start of the school day;
- Implemented a highly successful AmeriCorps program, with seven AmeriCorps volunteers providing labor for farm development while receiving valuable training and
- Partnered with the Natural Resources Conservation Service (NRCS) in the development of the first commercial "food forest park" in West Hawai'i.
- Created critically needed economic development for our community: to date, 40 full time and 25 part time jobs and an operating budget that adds more than \$2 million annually to our local economy.



*On behalf of the West Hawai'i community, Friends of Kona Pacific Public Charter School respectfully requests a \$1.2 million capital grant from the State of Hawai'i for planning and construction of West Hawai'i's first community kitchen.*

## Grant In Aid 2015 Capital Request – Project Information

### Project Title: West Hawai'i Community Kitchen



#### GOALS

Increase capacity to feed community members who are at risk for hunger, thus supporting community health through improved nutrition.

Provide a value-added community processing kitchen for our local farmers, who do not currently have access to a community kitchen.

Strengthen the regional agricultural economy by providing new revenue streams for local farmers.

#### BENEFITS

A grant-funded on-site kitchen will lower the cost of food service operations, resulting in project sustainability and long-term feasibility.

We will reduce hunger in our community. Lower food service costs mean lower prices, so that more hungry community members can be fed.

Local farmers will have access to a community kitchen for value-added processing – **the only such facility in West Hawai'i.**

#### DETAILS

3,000 sq. ft. community kitchen will be built on land owned by the applicant, Friends of Kona Pacific Public Charter School.

The facility will include a food service kitchen and a value-added production line, including filling and packaging equipment and technical support.

Centrally located in the heart of Kona's farming district, the new kitchen facility will be convenient and accessible for local farmers.

#### OPPORTUNITIES

Increased efficiency of operations will enable expansion of food service to feed up to 1,000 more hungry community members.

Creation of an integrated supply chain utilizing Friends' on-site farm will reduce food costs for the highly quality ingredients used in our food service menus.

This new model to address community hunger issues and improve the local agricultural economy can be replicated by other communities.

# Project Map #1: TMK Map Showing Location of Property



Applicant: Friends of Kona Pacific Public Charter School

## Project Map #2: Google Maps



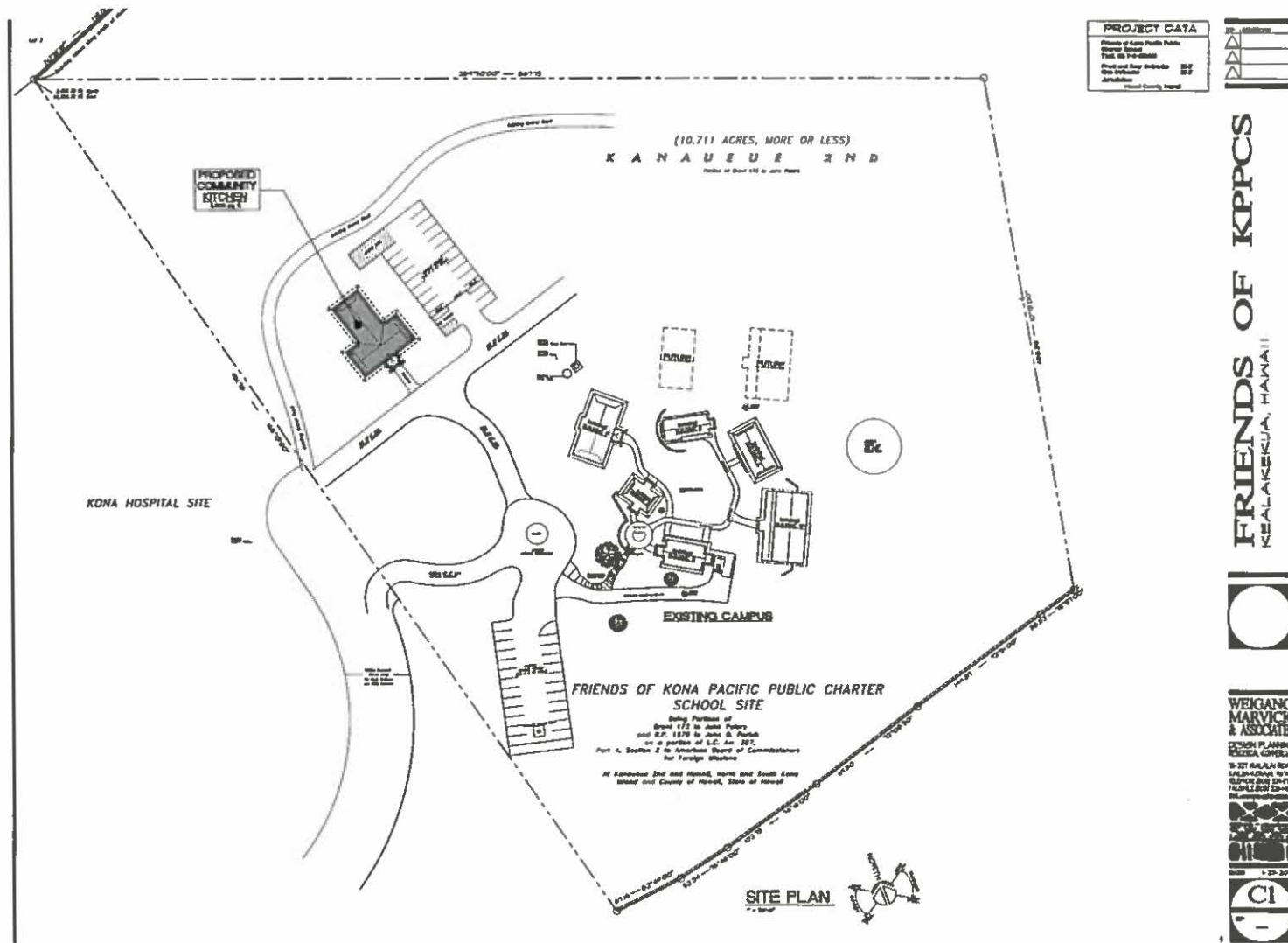
The image above shows the outline of Friends' Kanaeue Learning Center and its location in relation to Kona Community Hospital and the commercial area of Kealakekua. The existing school buildings can be seen in the lower left (southwest) corner of the property.

The image at right shows the location of the new community kitchen in relation to the existing school buildings.



area of Kealakekua. The e

# Project Site Plan



Applicant: Friends of Kona Pacific Public Charter School

## Community Kitchen Equipment List

---

The market research for our community kitchen conceptual plan yielded important strategic information regarding the kitchen equipment necessary to optimize the effectiveness of the kitchen for the use of the WHOLE Food Service, and for our local farmers and the produce they grow.

Our budget of \$300,000 for kitchen equipment includes the following items.

Kitchen Equipment	Additional Value-Added Production Equipment
2 hand wash sinks Vegetable wash and prep areas 3 stainless steel prep tables 1 stainless steel prep sink (2 bowls) Walk-In Freezer 8-burner range w/flat top and two conventional ovens Charbroiler Stock Pot Range Double-stacked convection ovens 40 gallon tilting braising/skillet pan 40 gallon tilting steam kettle Commercial mixer with 20 and 40 quart attachments 4 quart commercial food processor 40 quart immersion blender Ice machines & Accessories Three compartment sink with double dry racks Sanitizing dishwasher Fire suppression system	Secondary vegetable wash and prep areas 2 stainless steel prep tables 1 stainless steel prep sink (2 bowls) 6-burner range w/flat top and two conventional ovens Avocado press Cooked vegetable grinder Assorted Bakeware Assorted Prep Bowls Assorted Standard Pots and Pans Assorted Standard Kitchen Utensils Bun Pan/Cooling Racks Misc. Kitchen Appliances 2 reach-in freezers 2 reach-in refrigerators Automated filling machines for packaging and labeling





# Certificate of Special Recognition

- Presented to -

*Kona Pacific Public Charter School*

---

Universal Breakfast in the Classroom

For implementing a campus-wide breakfast program and providing a nutritious morning meal for all students, thus improving their health and academic achievement.

August 18, 2014

**DATE**

  
**NEIL ABERCROMBIE**  
Governor, State of Hawai'i



**Hawaii**  
Public Charter Schools  
Network

*Creating New Best Practices for  
Public Education in Hawai'i*



2013 – 2014 Hawaii Charter Schools Awards

**CREATING NEW BEST PRACTICES AWARD**

**Kona Pacific Public  
Charter School**

*Kealahou, Hawai'i Island*



---

## BOARD OF DIRECTORS

### **Megan Dehning, *President***

- Masters Degree in Education
- Lead Middle School Teacher, Innovations Public Charter School
- Certified Teaching Science as Inquiry (TSI) educator
- Former youth outreach coordinator for TREE Center Hawai'i
- Lifelong learner specializing in Hawaii's unique ecological and cultural heritage

### **Michael Kramer, *Treasurer***

- Masters Degree in Education, Harvard University
- Accredited Investment Fiduciary®
- The only investment advisor in the State of Hawai'i who exclusively manages socially responsible investment (SRI) portfolios.
- Managing Partner and Director of Social Research of Natural Investments LLC, a Registered Investment Adviser, a Green America-certified green business, and a founding B Corporation, with offices in five states.
- In 2005 founded the Kuleana Green Business Program of the Kona-Kohala Chamber of Commerce, the first all-sector social and environmental performance recognition program in the state.
- Serves on the board of the Sustainability Association of Hawai'i and is on the steering committee for the Hawai'i chapter of the Business Alliance for Local Living Economies.
- Appointed by Governor Lingle as a Founding Commissioner to the Hawai'i State Commission on Fatherhood, upon which he served as Vice-Chair.

### **Chris Hecht, *Secretary***

- Masters Degree in Education, pending 2015
- Managing partner of Swinger Partners, a private equity development firm, from 1998-2006.
- Co-founded Friends of Kona Pacific Public Charter School, a community-based nonprofit development corporation.
- Led the creation of Kona Pacific Public Charter School.
- \$4M in fund development income, 2006 – 2014.
- Board member and development lead, Alliance for Public Waldorf Education.
- Former trustee, Rudolf Steiner College.
- Operates a national practice consulting with community groups on charter school development.

### **Kumu Keala Ching, *Alaka'i***

- Serves as the board's Alaka'i (leader and guide) for all Hawaiian culture-based projects on Friends' 40-acre educational campus, and serves as a curriculum advisor to the school.

- A Native Hawaiian cultural educator, composer, song writer, and spiritual advisor to many Hawaiian organizations.
- Kumu Hula for Ka Pa Hula Na Wai Iwi Ola. As a composer of chants and mele, he travels the world to share hula.
- Co-founder and Executive Director of Na Wai Iwi Ola (NWIO) Foundation.
- Kumu Hula and cultural advisor to Halau Na Wai Ola in Sunnyvale, California; Kumu Hula Ka'ai Isa-Kahaku, Halau Na Wai Pana o Keala and Halau Na Wai Ola o Keala, (Japan); and Halau Na Wai 'Ohi'a in Zurich, Switzerland.

**Nancy Redfeather**

- Teacher and professional organic farmer for more than 40 years, working with public, private and Hawaiian language immersion schools to create school learning gardens, connecting core curriculum with garden-based learning.
- Founder of Hawai'i SEED, the Hawai'i Island Seed Exchange, and the Know Your Farmer Alliance, and was one of the founders of Kohala Center's Ku 'Aina Pa Program.
- Coordinator of the Hawai'i Island Food Summit in October 2007 and currently is coordinating the Kohala Center's newest food self-reliance project, the Hawai'i Island School Garden Network, which includes all island schools with garden projects, public, private, charter, or after-school programs.
- Coordinator of the "Hua Ka Hua – Restore Our Seed" Public Seed Symposium held in April 2010 in Kona that has led to the new Hawai'i Public Seed Initiative.
- Member of the Ad-Hoc Committee responsible for revising the County of Hawai'i Agricultural Plan.
- Board Member of the Green Education Foundation and the Organic Seed Growers and Trade Association.

**Ben Publico**

- Graduate of Kailua High School on Oahu; earned a B.A. in Hawaiian Language at the University of Hawai'i at Manoa.
- Grew up in a farming family with an agricultural heritage on the Hamakua coast of Hawai'i Island and developed a kalo (taro) business there.
- Completed Kohala Center's *Ku 'Aina Pa* program.
- Operates Kona Pacific Public Charter School's garden and develops the gardening curriculum, with a special focus on traditional Hawaiian agricultural practices.

DAVID Y. IGE  
GOVERNOR



KATHRYN S. MATAYOSHI  
SUPERINTENDENT

STATE OF HAWAII  
DEPARTMENT OF EDUCATION  
650 IWILEI ROAD, SUITE 270  
HONOLULU, HAWAII 96817

HAWAII CHILD NUTRITION PROGRAMS

January 28, 2015

RE: Letter of Support for GIA Capital Grant Request  
Applicant: Friends of Kona Pacific Public Charter School

Dear Legislators,

We are writing to express our strong support for the Friends of Kona Pacific Public Charter School's 2014 GIA request for \$1.2 million in capital funding for an on-site community kitchen. We support Kona Pacific in their effort to improve the nutritional integrity of their campus and community. We believe this capital funding project will provide many important benefits to the West Hawai'i community as it addresses the health, nutrition, agricultural and economic development needs of the region in addition to strengthening Kona Pacific's own educational program.

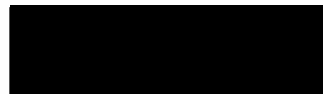
The mission of the Hawai'i Child Nutrition Programs (HCNP) office is to promote the importance of nutrition through federal compliance, education and partnerships. Our vision is that all participants in the Hawai'i Child Nutrition Programs will be healthy and hunger-free. We administer and have federal overview of many programs in support of these goals, including National School Lunch Program, School Breakfast Program, and Special Milk programs, Afterschool Snack, Child and Adult Care Food Program, Fresh Fruit and Vegetable Program, Seamless Summer feeding and Summer Food Service Program; supporting not only our Charter Schools, both Public and Private, but all DOE schools as well.

We have collaborated with Kona Pacific on many worthy programs in the past and see them as a standalone leader with their innovative nutrition programs. They have pioneered Universal Breakfast in the Classroom, lunches made with all scratch cooking, and unique and vital food programs that feed hungry community members.

HCNP wholly supports this project because of its significant and inter-related community benefits: 1) the food service kitchen will lower the costs of meals for vulnerable community members, enabling the service to reach more students and hungry families; 2) the kitchen will meet the significant need for a low-cost value-added production facility for family farmers in this rural community thus creating additional economic opportunities for local farmers.

HCNP looks forward to supporting our partnership with Friends in the implementation of this very worthy project and are fully committed to assist them in all ways possible so they will be successful in their worthy endeavors.

HCNP asks that you support this very worthwhile project on behalf of the West Hawai'i community.



Sue Uyehara, RD MPH  
Director  
Hawaii Child Nutrition Programs  
650 Iwilei Road, Suite 270  
Honolulu, HI 96817



Timothy Mertz, MPH  
Assistant Director  
Hawaii Child Nutrition Programs  
650 Iwilei Road, Suite 270  
Honolulu, HI 96817

TM:jo



January 12, 2015

RE: Letter of Support for GIA Capital Grant Request  
Applicant: Friends of Kona Pacific Public Charter School

To Whom It May Concern,

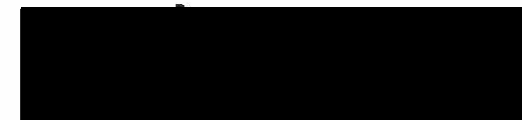
I am writing to express my strong support for the Friends of Kona Pacific Public Charter School's 2015 GIA request for \$1.2 million in capital funding for an on-site food service and value-added kitchen and related infrastructure. This project will provide many significant benefits to our West Hawai'i community, addressing health, nutrition, agricultural and economic development needs.

Hawai'i Farmers Union is a chartered chapter of the National Farmers Union. NFU is the second largest general farm organization in the country and was founded in 1902. Today, the organization continues its original mission: to protect and enhance the economic well-being and quality of life for family farmers and ranchers and their rural communities. It does this by promoting legislation and education beneficial to farmers, and by developing cooperative buying and selling methods and businesses. In Hawaii we currently have about 400 members.

We support this project because of its inter-related community benefits: 1) the food service kitchen will lower the costs of meals for our vulnerable community members, enabling the service to reach more hungry families; 2) the kitchen will also meet the critical need for a low-cost value-added production facility for the family farmers in our rural community, creating economic opportunities for local farmers. Currently, there is no nonprofit community kitchen in West Hawai'i.

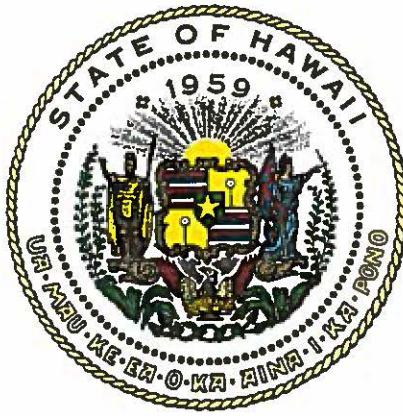
This project will have major positive impacts that will benefit our West Hawaii community, and I strongly urge the approval of this 2015 GIA request.

Respectfully Submitted,  
HAWAII FARMERS UNION UNITED-  
KONA CHAPTER



Steve Sakala  
Kona Chapter, President

*The Kona Chapter is a subdivision of the Hawaii Farmers Union United. The Hawaii Farmers Union United is a nonprofit corporation organized under the laws of Hawaii. The Hawaii Farmers Union United and its Chapters advocate for the sovereign right of farmers to create and sustain vibrant and prosperous agricultural communities for the benefit of all Hawaii through cooperation, education and legislation.*  
Kona Farmers Union United, Kona Chapter • P.O. Box 5436 • Kailua-Kona HI 96745-5436



## Department of Commerce and Consumer Affairs

### CERTIFICATE OF GOOD STANDING

I, the undersigned Director of Commerce and Consumer Affairs of the State of Hawaii, do hereby certify that

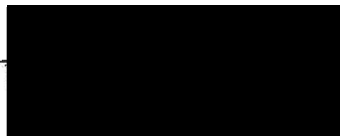
**FRIENDS OF KONA PACIFIC PUBLIC CHARTER SCHOOL, INC.**

was incorporated under the laws of Hawaii on 11/07/2006 ; that it is an existing nonprofit corporation; and that, as far as the records of this Department reveal, has complied with all of the provisions of the Hawaii Nonprofit Corporations Act, regulating domestic nonprofit corporations.



IN WITNESS WHEREOF, I have hereunto set my hand and affixed the seal of the Department of Commerce and Consumer Affairs, at Honolulu, Hawaii.

Dated: June 30, 2014



Director of Commerce and Consumer Affairs