



State of Hawaii
DEPARTMENT OF AGRICULTURE
1428 South King Street
Honolulu, Hawaii 96814-2512
Phone: (808) 973-9600 FAX: (808) 973-9613

**TESTIMONY OF SCOTT E. ENRIGHT
CHAIRPERSON, BOARD OF AGRICULTURE**

**BEFORE THE SENATE COMMITTEE ON WAYS AND MEANS
WEDNESDAY, FEBRUARY 19, 2014
9:10 A.M.
Room 211
SENATE BILL NO. 2397 SD1
RELATING TO ECONOMIC DEVELOPMENT**

Chairperson Ige and Members of the Committee:

Thank you for the opportunity to testify on Senate Bill No. 2397 SD1. This bill requires the High Technology Development Corporation (HTDC) to develop an agricultural technology park on three properties in central Oahu. In developing the agricultural technology park, HTDC will consult with the Housing Finance and Development Corporation, departments of Agriculture and Education, Agribusiness Development Corporation, and the University of Hawaii College of Tropical Agriculture and Human Resources. The purpose of the Park is to bridge the agricultural and technology gap, secure investment for agricultural state facilities, provide jobs for rural communities, and be used to support agricultural tourism. The Department of Agriculture supports the measure and defers to the High Technology Development Corporation and the Agribusiness Development Corporation who is in control of the 1,200 acres of agricultural land in central Oahu acquired from the Galbraith Estate.

Thank you for the opportunity to present our testimony.



Written Statement of
ROBBIE MELTON
Executive Director & CEO
High Technology Development Corporation
before the
SENATE COMMITTEE ON
WAYS AND MEANS

Wednesday, February 19, 2014
9:10 a.m.
State Capitol, Conference Room 211
In consideration of

SB 2397 SD1 RELATING TO ECONOMIC DEVELOPMENT.

Chair Ige, Vice Chair Kidani, and Members of the Committees on Ways and Means.

The High Technology Development Corporation (HTDC) **supports the intent of SB 2397 SD1** relating to Economic Development. HTDC supports the intent to nurture and grow agricultural innovation and supporting startups and businesses in this arena.

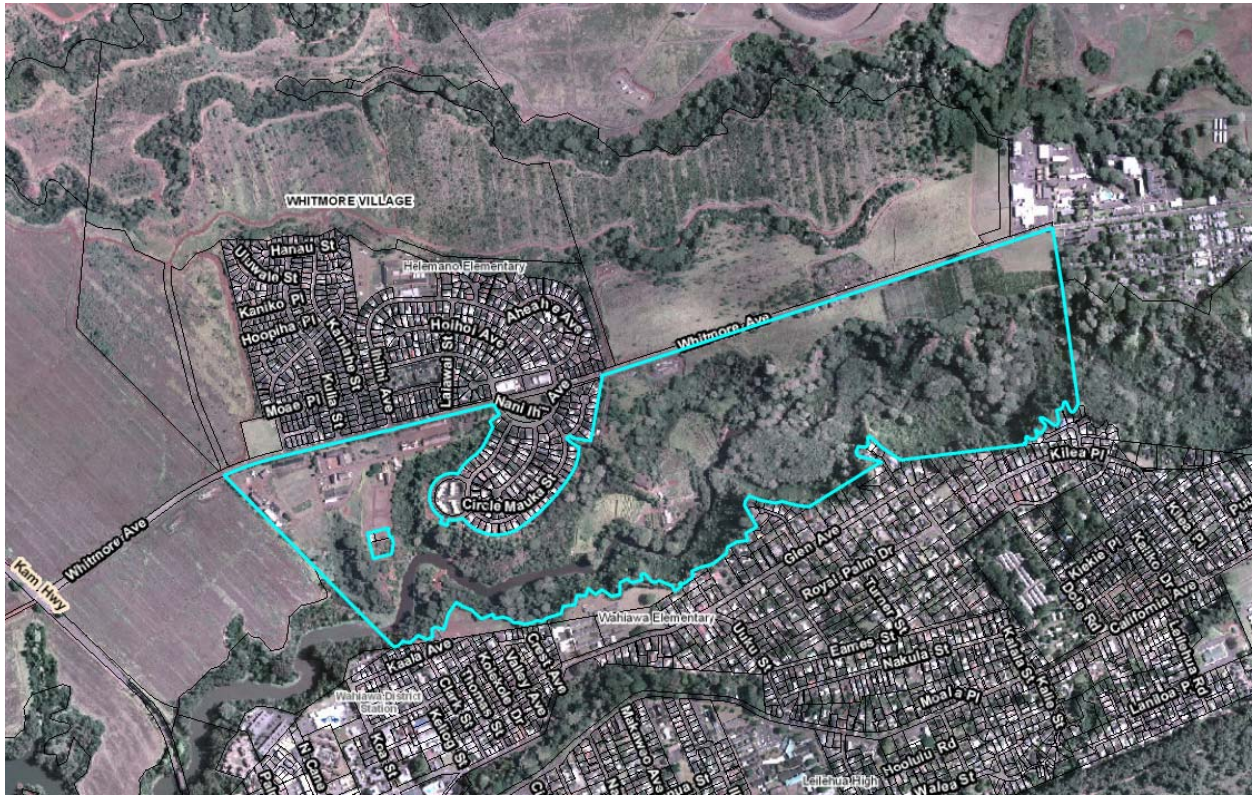
HTDC's Innovate Hawaii program offers business support to manufacturers that would have synergies with an agricultural tech park. HTDC has a core competency in technology and manufacturing and already has statute to develop technology parks, but does not have resources to explore private sector partnerships in this area.

Though we support the intent of this measure, HTDC will need \$500,000 to research and build expertise in this focus area, dedicate resources to explore partnership opportunities, and solicit proposals to ensure the best use of State resources. This would be a project specific appropriation and should not replace or adversely impact the Administration's budget request. Without appropriation HTDC suggests that our agency would be best suited in a support role for this initiative, as part of a planning committee providing expertise in establishing technology parks and in entrepreneurship, rather than revising the HRS 206M.

Furthermore, HTDC will lose its current source of revenue for programs in April 2015 which will further diminish our ability to provide support for new projects. In the Administration's budget, HTDC has requested CIP funds to build a new innovation hub which will: restore our source of operational funding, provide a resource for the primary sector we are mandated to support, and house a base innovation and entrepreneurial program that we can leverage into other industries.

HTDC does not offer comment on the location selected as identified by the TMK (71002004, 71002023, and 71002099 in Whitmore Village).

<http://gis.hicentral.com/FastMaps/ParcelZoning/>



Thank you for the opportunity to offer these comments.



SB 2397sd1, Relating to Economic Development
Senate Ways and Means Committee
Wednesday, February 19, 2014
9:10 am
Conference Room 211

Testimony by: Larry Jefts
Position: Support

Chair Ige and Members of the Senate Ways and Means Committee:

I am Larry Jefts, co-owner of Sugarland Growers, Inc., a family run farm with more than 35 years experience of Hawaii farm experience on Molokai and Oahu.

We support SB2397sd1, which seeks to establish an agricultural technology park that can bridge the agricultural and technology gap and be used to provide agritourism benefits. A coordinated plan for such an agricultural technology park will enable farmers to access technology to keep farm practices in step with contemporary market and regulatory demands.

Your support of this measure is appreciated. Thank you for the opportunity to present testimony. I can be reached at (808) 688-2892 if there are any questions.

From: mailinglist@capitol.hawaii.gov
To: [WAM Testimony](#)
Cc: roslynn61@yahoo.com
Subject: *Submitted testimony for SB2397 on Feb 19, 2014 09:10AM*
Date: Friday, February 14, 2014 7:18:00 PM

SB2397

Submitted on: 2/14/2014

Testimony for WAM on Feb 19, 2014 09:10AM in Conference Room 211

Submitted By	Organization	Testifier Position	Present at Hearing
Roslynn Pascua	Individual	Support	No

Comments:

Please note that testimony submitted less than 24 hours prior to the hearing, improperly identified, or directed to the incorrect office, may not be posted online or distributed to the committee prior to the convening of the public hearing.

Do not reply to this email. This inbox is not monitored. For assistance please email webmaster@capitol.hawaii.gov