

NEIL ABERCROMBIE  
GOVERNOR



TERRI FUJII  
CHAIRPERSON

STATE OF HAWAII  
**STATE PUBLIC CHARTER SCHOOL COMMISSION**  
**('AHA KULA HO'ĀMANA)**  
<http://CharterCommission.Hawaii.Gov>  
1111 Bishop Street, Suite 516, Honolulu, Hawaii 96813  
Tel: 586-3775 Fax: 586-3776

---

DATE: January 2, 2014

TO: Senator David Ige, Chair  
Senate Committee on Ways and Means

Representative Sylvia Luke  
House Committee on Finance

FROM: Tom Hutton, Executive Director  
State Public Charter School Commission

SUBJECT: Budget Briefing Testimony

---

Chair Ige, Chair Luke, and members of the Committees:

The State Public Charter School Commission ("Commission") appreciates this opportunity to submit this testimony.

#### MISSION STATEMENT

The statutory mission of the Commission is "to authorize high-quality public charter schools throughout the State." (HRS 302D-3(b)).

#### ECONOMIC AND FISCAL CONDITIONS

During the 2012 session, the Legislature passed Act 130, Session Laws of Hawaii 2012 ("Act"), establishing a new charter school law that created a new governance structure for Hawaii's charter school system with clear lines of authority and accountability to foster improved student outcomes, to support new approaches to education, and to ensure accountability of public funds. Act 130 created the Commission and gave it statewide chartering jurisdiction and authority.

The Commission staff officially began operations July 1, 2013, as the Charter School Administrative Office ("CSAO") sunsetted on June 30, 2013. The purpose of the Commission and its staff is principally to authorize and oversee high-quality charter schools, while the CSAO's purpose was also to provide

advocacy for, and relatively more assistance and support, for the development, growth, progress and success of charter schools. These roles are very different, and both the Commission and the charter schools themselves continue to adjust to the changes.

To help implement the Act and the transition from the Charter School Review Panel (“CSRP”) to the Commission and from the CSAO to Commission staff, the National Association of Charter School Authorizers (“NACSA”), was contracted by the Board of Education as a transition coordinator. NACSA developed a staffing plan and Commission operating budget for the 2013-2015 biennium, developed the charter performance contract template and the associated financial and organizational performance frameworks, drafted administrative rules, and assisted the Commission in implementing a rigorous process to evaluate new charter school applications. The Commission’s first Executive Director was hired in February.

One of the first things Commission staff completed was the finalization of the charter contracts for the fiscal year 2013-2014, which all 32 charter schools then established executed in June of 2012. As part of their unique status, self-governed charter schools must effectively manage their academic, financial, and operational affairs. The charter contract includes performance provisions that clearly set forth the academic, financial, and organizational performance indicators that will guide the Commission’s evaluation of each public charter school. The performance framework will include assessment measures to evaluate student academic proficiency, student academic growth, financial performance, and sustainability and organizational viability. The Commission’s annual report submitted to the Board of Education and Legislature included evaluations of each school resulting from the application of the performance framework at the time.

The heightened expectations and reporting requirements embodied in the Commission’s performance framework, while necessary and in some cases overdue, do pose some administrative and related fiscal challenges to the charter schools, which typically are lightly-staffed. State per-pupil funding for the charter schools is based on an enrollment-based percentage of appropriations to the Department of Education (“DOE”). As a result of basically flat per-pupil funding in recent years, the Commission’s analysis of financial data submitted by the schools suggests that the schools recently have been depleting operating reserves to a degree that raises sustainability concerns.

In addition, enrollment at charter schools continues to increase year over year. This school year, SEEQS: The School for Examining Essential Questions of Sustainability (“SEEQS”) opened its doors to 64 middle school students, bringing the total number of charter schools in Hawaii to 33. Enrollment for the school year 2013-2014 is 10,400, which represents an increase of 580 students, or 6%, from school year 2012-2013. By comparison, the enrollment increase from school year 2011-12 to school year 2012-13 was 5.15%. Most of the charter schools’ state funding is provided on a per-pupil basis based on the schools’ pro rata enrollment compared to the total public education enrollment. The per-pupil funding does not include any funding for facilities. Despite the increased per pupil funding associated with enrollment growth, the increased enrollment further strains the charter schools’ ability to provide facilities for their students.

## FEDERAL FUNDS

Charter schools are included with the DOE’s Federal programs since the DOE is the prime recipient. The Federal Budget Contract Act sequester resulted in an approximately 5% cut for non- defense

discretionary funding, including most education programs such as Title I, Part A; Title II, Part A; Title III; IDEA, Part B; and Impact Aid.

Currently, the DOE is planning to reduce Title II funding to the charter schools, as approximately 75% of Title II funding will be realigned and directed to the Complex Areas in the priority areas of Common Core training and Educator Effectiveness System (“EES”) support. Although DOE already redirected Title II funding for their schools in this school year, the reduction to charter schools is expected for school year 2014-2015.

Although a reduction in federal Impact Aid funding for this school year had been expected, the amount actually received was significantly higher than in prior years due to a one-time, anomalous adjustment. The Commission will be devoting a portion of the temporary increase in funds for a pilot program to fund proposed school facilities projects on the basis of need, school performance, and project viability.

## BUDGET REQUEST

The original budget request for the charter schools as submitted to the Department of Budget and Finance in October included funding for the following elements:

1. School Operations; and
2. Commission Operational Expense

However, at that time an interagency working group on charter school funding convened by Senator Jill Tokuda, Chair of the Senate Committee on Education, was still working on possible proposals for the 2014 Session, particularly related to the Commission’s operating budget and the longstanding problem of charter school facilities. These proposals, detailed below, may require not just appropriations but enabling legislation.

### **School Operations**

The charter schools continue to manage their operations with funding they receive. Unfortunately, the level of public funding continues to challenge schools as they strive to provide services and programs that speak to their unique school missions as well as meet their day-to-day operational requirements. For start-up charter schools (as distinct from charter schools that converted to charter status from DOE schools and so were established with full facilities), operating funds must be stretched to cover facilities costs. Under the per-pupil funding formula based on DOE appropriations, approximately \$3.1 million in per pupil funding is included in the Governor’s supplemental budget package for charter schools’ per pupil operating fund enrollment adjustment.

Estimated grants and donations to charter schools were self-reported by 23 of the 32 charter schools for fiscal year ended June 30, 2013, for a total of approximately \$7,408,000. Grants were provided during the year by other institutions, notably including Kamehameha Schools. For some charter schools, the donations and grants received represent more than 40% of their total receipts. While this support is helpful and been an element of support for these charter schools for many years, it also comes with many conditions.

Despite the challenges of opening and operating a successful charter school, the Commission has received notices of intent to apply for a charter from thirteen eligible applicants in its current application cycle. Commission staff will be reviewing and evaluating the applicants to identify high quality applications for charter award. Any charters awarded to applicants this year will result in charter schools opening in school year 2015-2016.

### **Commission Operational Expense**

The Commission has made supplemental budget requests totaling \$289,506, which are included in the Governor's budget package. These requests include funding for 1) filling a shortfall in budgeted salary for federal programs positions; 2) compliance monitoring software annual subscription, 3) filling a collective bargaining appropriation shortfall, and 4) funding for the costs of charter school labor arbitration.

1. Funding for the Commission's 2013-15 budget was by line-item, versus the previous method of allocating 2% of total charter school per-pupil funding to CSAO. The Commission's budget submitted for this fiscal year was developed by NACSA, as part of its responsibilities as transition coordinator. The operating budget included fifteen staff positions. Three federal programs support staff members were not included in the budget. It is not known why they were excluded, but it could be that the positions were assumed to be fully funded by the federal programs they support. Unfortunately, \$47,426 (or approximately 27%) of federal programs staff salaries are not funded by the federal programs they support, resulting in a salary expense \$20,751 higher than budgeted for FY 2013. For the coming fiscal year, \$67,000, included in the supplemental budget request, will be necessary to cover this salary shortfall. The Commission has filled fourteen of the fifteen budgeted positions and deferred the filling of the final position pending resolution of this shortfall in federal programs staff funding, having devoted funds budgeted for the vacant position to cover the shortfall this past fiscal year.

2. The compliance monitoring software is expected to save both Commission and charter school staff time by significantly reducing the need to send reminders or other follow-up communication regarding charter school reporting requirements, which have increased significantly under heightened accountability. In addition, this software will enable electronic document storage, reducing the need for physical storage of records for both the Commission and schools. This system is also expected to provide benefits to the schools by providing them with a document management system and helping to streamline their processes to create administrative efficiency and improve compliance.

3. The Collective Bargaining allotment was understated due to the calculation methodology, which compared new salary rate to current salary of an employee and then accumulated the difference for all charter school employees. In some instances, since charter schools are able to negotiate supplemental agreements outside of the union master agreements which can include higher salary rates, this difference was a negative number (current salary higher than new salary rate). The calculation methodology netted negative and positive numbers, which resulted in an overall allocation insufficient to provide benefits to all employees.

4. Arbitration funding will enable schools to proceed to arbitration when in the past the schools may have simply conceded due to lack of funds available to pay for the cost of arbitration, which can include travel, the costs of the arbitrator, and deputy Attorney General expenses. The Department of the Attorney General has indicated that charter schools sometimes simply concede disputes in which they

would have a good likelihood of prevailing, simply because they lack the funds to avail themselves of the process.

### **Commission's Operating Budget Funding**

The Commission is seeking a statutory clarification of the funding formula for its operating budget to specify that the Commission's operating budget be appropriated separately from, and in addition to, the charter schools' per pupil funding. This was the funding model contemplated, and reflected in the Governor's budget last year, when Act 130 departed from the previous funding model, under which the CSAO had been funded with two percent of the total per pupil funding. When the budget was passed last year, however, it was revealed that the Commission's budget unexpectedly had been deducted from the schools' per pupil funding. Speculation was that this was done on the assumption that the inclusion in the calculation of per pupil funding of an enrollment-based percentage of Department of Education budget code EDN 300 – School Support, already in effect provided the funding for the Commission's operations.

The function of the Commission office is very different from that of the CSAO. As stated in the Department of Education's budget, EDN 300 – School Support is to support the operations of the public school system by providing leadership, management, planning, fiscal, logistical, technological, personnel, compliance with federal and state laws, and other supporting services. These functions are handled primarily at the school level by the school director and/or the school's governing board.

As provided in §302D-3, the mission of the Commission shall be to authorize high-quality public charter schools throughout the State, with responsibilities including:

- soliciting and evaluating charter applications;
- approving quality charter applications that meet identified educational needs and promote a diversity of educational choices;
- negotiating and executing sound charter contracts;
- monitoring, in accordance with charter contract terms, the performance and legal compliance of public charter schools; and
- determining whether each charter contract merits renewal, nonrenewal, or revocation.

With the different scope, role, and responsibilities of the Commission, deeming both the Commission's and the schools' administrative funding to be adequately provided from EDN 300 is not consistent with the scope, role and responsibilities as described in that budget code. Instead, the EDN 300 funds should be provided to the charter schools as part of their per pupil funding and the Commission budget appropriately separately.

### **Facility Costs**

Currently, start-up charter schools must pay for the costs of their facilities from operational funds. Hawaii Revised Statutes Chapter §302D-E provides:

Beginning with fiscal year 2014-2015 and each fiscal year thereafter, the Commission may request facilities funding for charter schools as part of its annual budget request to the Director of Finance.

The Commission is implementing a Facilities Pilot Program for the allocation of funds to charter schools for relatively small-scale facilities projects based in part on the need and performance of charter schools as well as project viability, and has allocated approximately \$680,000 of federal Impact Aid funds to this program.

The Commission urges the Legislature to consider making an appropriation to continue this program after the Impact Aid funds are awarded in the pilot. Before the first dollar of any such newly appropriated funds were expended, the Commission will have run and evaluated the pilot, identifying and addressing any issues.

We note that, as in past years, the Commission also submitted proposed CIP projects from charter schools, eligibility for which is limited to start-up charter schools located on state land. We believe that these projects are meritorious but so far, as in past years, they have been categorically rejected rather than considered on their merits. The Commission is attempting to identify the specific concerns about CIP funding of charter schools in an attempt to learn how other jurisdictions have successfully addressed similar concerns. If, however, these CIP projects are not to be considered now, in our view it is all the more important that another means of providing at least some support for the charter schools' facilities needs be implemented in the meantime. We respectfully suggest that supporting a Commission program that prioritizes on the basis of need and performance is an option worthy of the Legislature's consideration.

## CONCLUSION

The State Public Charter School Commission appreciates the opportunity to discuss these issues with the Committees and thanks the Chairs and Members of the Committees for your continuing support of Hawaii's 33 public charter schools and their 10,400 students. The Commission remains prepared to work with the Legislature and others to find additional innovative ways to improve learning options and opportunities for Hawaii's students.

Department of Education - Charter Schools  
Functions Prioritized

Table 1

<u>Priority</u>	<u>Description of Function</u>	<u>Activities</u>	<u>Prog ID(s)</u>	<u>Statutory Reference</u>
1	Authorize high-quality public charter schools throughout the State.	Soliciting and evaluating charter applications	EDN 600	Act 159, Chapter 302D
		Approving quality charter applications that meet identified educational needs and promote diversity of educational choices		
		Negotiating and executing sound charter contracts with each approved public charter school		
		Monitoring, in accordance with charter contract terms, the performance and legal compliance of public charter schools		
		Determining whether each charter contract merits renewal, nonrenewal, or revocation		
2	Be responsible for the receipt and the distribution of funds to the public charter school it authorizes	Receive, distribute and monitor federal funds to the charter schools as subrecipient under DOE	EDN 600	Act 159, Chapter 302D
		Receive per-pupil funding from the department of budget and finance and distribute funding to the charter schools it authorizes		

Department of Education - Charter Schools  
Department Totals

Table 2

Fiscal Year 2014									
Act 134/13 Appropriation	Restriction	Emergency Appropriations	Total FY14	MOF					
\$ 64,425,165.00			\$ 64,425,165.00	A					
			\$ -						
			\$ -						
			\$ -						
			\$ -						
			\$ -						
\$ 64,425,165.00	\$ -	\$ -	\$ 64,425,165.00	Total					
Fiscal Year 2015									
Act 134/13 Appropriation	Reductions	Additions	Total FY15	MOF					
\$ 68,050,379.00			\$ 68,050,379.00	A					
		\$ 62,000.00	\$ 62,000.00	A					
		\$ 1,888,850.00	\$ 1,888,850.00	N					
		\$ 62,700.00	\$ 62,700.00	A					
		\$ 100,000.00	\$ 100,000.00	A					
		\$ 64,806.00	\$ 64,806.00	A					
		\$ 3,107,733.00	\$ 3,107,733.00	A					
			\$ -						
\$ 68,050,379.00	\$ -	\$ 5,286,089.00	\$ 73,336,468.00	Total					



Department of Education - Charter Schools  
 Program ID Totals

Table 3

Prog ID	Program Title	MOF	As appropriated by Act 134/13 (FY14)			Governor's Submittal (FY15)			Percent Change of \$\$\$\$
			Pos (P)	Pos (T)	\$\$\$	Pos (P)	Pos (T)	\$\$\$	
EDN 600	Charter Schools	A	15.00	0.00	\$ 1,005,665.00	16.12	0.00	\$ 1,067,665.00	6%
		N	0.00	0.00	\$ -	1.88	0.00	\$ 1,888,850.00	100%
		A			\$ 63,419,500.00			\$ 70,379,953.00	11%

Department of Education - Charter Schools  
Decisions

Table 4

Prog ID	Description of Request	MOF	Initial Department Request			Initial Budget & Finance Recommendation			Governor's Final Decision		
			Pos (P)	Pos (T)	\$\$\$	Pos (P)	Pos (T)	\$\$\$	Pos (P)	Pos (T)	\$\$\$
EDN 600	Funding for Federal Positions	A	1.12	0.00	\$ 62,000.00	1.12	0.00	\$ 62,000.00	1.12	0.00	\$ 62,000.00
	Funding for Federal Positions	N	1.88	0.00	\$ 1,888,850.00	1.88	0.00	\$ 1,888,850.00	1.88	0.00	\$ 1,888,850.00
	Subscription fee for Authorizer monitoring s/w	A	0.00	0.00	\$ 102,700.00	0.00	0.00	\$ 62,700.00	0.00	0.00	\$ 62,700.00
	Funding for arbitration of labor disputes	A	0.00	0.00	\$ 72,000.00	0.00	0.00	\$ 100,000.00	0.00	0.00	\$ 100,000.00
	Collective bargaining allotment shortfall	A	0.00	0.00	\$ 64,806.00	0.00	0.00	\$ -	0.00	0.00	\$ 64,806.00
	Per pupil operating fund enrollment adjustment	A	0.00	0.00	\$ -	0.00	0.00	\$ 3,105,349.00	0.00	0.00	\$ 3,107,735.00

Department of Education - Charter Schools  
 Reductions

Table 5

<u>Prog ID</u>	<u>Description of Reduction</u>	<u>Impact of Reduction</u>	<u>MOE</u>	<u>Pos (P)</u>	<u>Pos (T)</u>	<u>\$\$\$</u>	<u>Carry-over?</u> <u>(Y/N)</u>
	None						

Department of Education - Charter Schools  
Additions

Table 6

<u>Prog ID</u>	<u>Request Category</u>	<u>Prog ID Priority</u>	<u>Dept-Wide Priority</u>	<u>Description of Addition</u>	<u>Justification</u>	<u>MOF</u>	<u>Pos (P)</u>	<u>Pos (T)</u>	<u>\$\$\$</u>
EDN600	FC	1	1	Per pupil operating fund enrollment adjustment	Based on the formula for charter school per pupil funding (operating funding) using the statutory language of HRS 302B-12.	A	0.00	0.00	\$ 3,107,735.00
EDN600	O	2	2	Funding for Federal Positions	The Federal programs support staff costs were not included in the line item budget for the State Public Charter School Commission (SPCSC) as developed by the transition consultant, National Association of Charter School Authorizers (NACSA).	A	1.12	0.00	\$ 62,000.00
EDN600	O	3	3	Funding for Federal Positions	The Federal programs support staff costs were not included in the line item budget for the State Public Charter School Commission as developed by the transition consultant, National Association of Charter School Authorizers (NACSA). Federal funding for these positions were also excluded from the SPCSC budget.	N	1.80	0.00	\$ 188,850.00
EDN600	O	4	4	Subscription fee for Authorizer monitoring s/w	The software is expected to increase administrative productivity of staff at SPCSC and schools, improve charter school compliance through electronic records management including reminders and follow-up communication, and organize and store reports in a central electronic repository.	A	0.00	0.00	\$ 62,700.00
EDN600	O	5	5	Collective bargaining allotment shortfall	The collective bargaining allotment was understated due to the calculation methodology, which compared new salary rate to current salary of an employee and then accumulated the difference for all charter school employees. In some instances, since charter schools are able to negotiate supplemental agreements outside of the union master agreements which can include higher salary rates, this difference was a negative number (current salary higher than new salary rate.) The calculation methodology netted negative and positive numbers which resulted in an overall allocation insufficient to provide benefits to all employees.	A	0.00	0.00	\$ 64,806.00

Department of Education - Charter Schools  
Additions

Table 6

<u>Prog ID</u>	<u>Request Category</u>	<u>Prog ID Priority</u>	<u>Dept-Wide Priority</u>	<u>Description of Addition</u>	<u>Justification</u>	<u>MOF</u>	<u>Pos (P)</u>	<u>Pos (T)</u>	<u>\$\$\$</u>
EDN600	O	6	6	Funding for arbitration of labor disputes	This funding will enable schools to proceed to arbitration on those cases where the Department of the Attorney General deems the school has a likelihood of prevailing. This may result in lower costs in the long term as complainants will realize the schools will no longer be forced to capitulate so readily to challenges by offering financial settlements. Complainants' representatives are well aware that charter schools currently cannot afford the arbitration proces.	A	0.00	0.00	\$ 100,000.00

Department of Education - Charter Schools  
Restrictions

Table 7

<u>Prog ID</u>	<u>MOF</u>	<u>Restriction \$\$\$</u>	<u>Percent of Act 134/13 Prog ID Appropriation</u>	<u>Impact</u>
				None

Department of Education - Charter Schools  
 Emergency Appropriations

Table 8

<u>Prog ID</u>	<u>Description of Request</u>	<u>Explanation of Request</u>	<u>MOF</u>	<u>Pos (P)</u>	<u>Pos (T)</u>	<u>\$\$\$</u>
	None					

Department of Education - Charter Schools  
Exceed Appropriations

Table 9

Prog ID	MOF	Date	Appropriation	Amount Exceeding Appropriation	Percent Exceeded	Reason for Exceeding Ceiling	Legal Authority	Recurring (Y/N)	GF Impact (Y/N)
EDN600	N	2/1/2013	\$ -	\$ 2,678,196.00	100.0%	Impact Aid		Y	N
	N	7/1/2012	\$ -	\$ 13,732.00	100.0%	Education Jobs Fund		Y	N
	N	7/1/2012	\$ -	\$ 468,909.00	100.0%	National School Breakfast		Y	N
	N	7/1/2012	\$ -	\$ 1,911,340.00	100.0%	National School Lunch		Y	N
	N	7/1/2012	\$ -	\$ 184,418.00	100.0%	Fresh Fruit & Vegetable Program		Y	N
	N	7/1/2012	\$ -	\$ 15,971.00	100.0%	English Language Acquisition		Y	N
	N	7/1/2012	\$ -	\$ 276,429.00	100.0%	Improve Teacher Quality State Grant		Y	N
	N	7/1/2012	\$ -	\$ 10,701.00	100.0%	Title II HQT Incentive Awards		Y	N
	N	7/1/2012	\$ -	\$ 1,590,405.00	100.0%	Title I Grants To LEA		Y	N
	N	7/1/2012	\$ -	\$ 38,895.00	100.0%	Federal Title II a		Y	N
	N	7/1/2012	\$ -	\$ 58,206.00	100.0%	ARRA Title I Grants to LEA		Y	N
	N	7/1/2012	\$ -	\$ 39,407.00	100.0%	Summer Food Service Program for Children		Y	N
	N	7/1/2012	\$ -	\$ 234,177.00	100.0%	Native Hawaiian Education		Y	N
	N	7/1/2012	\$ -	\$ 1,026,431.00	100.0%	School Improvement Grants		Y	N
	N	7/1/2012	\$ -	\$ 15,396.00	100.0%	Federal NCLB Migrant Education		Y	N
	N	7/1/2012	\$ -	\$ 7,553.00	100.0%	National After School Snack		Y	N
	N	10/15/2013	\$ -	\$ 3,500,000.00	100.0%	Impact Aid		Y	N
	N	7/1/2013	\$ -	\$ 6,500.00	100.0%	Education Jobs Fund - est		Y	N
	N	7/1/2013	\$ -	\$ 200,000.00	100.0%	National School Breakfast - est		Y	N
	N	7/1/2013	\$ -	\$ 765,000.00	100.0%	National School Lunch - est		Y	N
	N	7/1/2013	\$ -	\$ 76,760.00	100.0%	Fresh Fruit & Vegetable Program - est		Y	N
	N	7/1/2013	\$ -	\$ 6,400.00	100.0%	English Language Acquisition - est		Y	N
	N	7/1/2013	\$ -	\$ 110,500.00	100.0%	Improve Teacher Quality State Grant - est		Y	N
	N	7/1/2013	\$ -	\$ 4,300.00	100.0%	Title II HQT Incentive Awards - est		Y	N
	N	7/1/2013	\$ -	\$ 200,000.00	100.0%	Title I Grants To LEA - est		Y	N
	N	7/1/2013	\$ -	\$ 3,000.00	100.0%	Federal Title II - est		Y	N
	N	7/1/2013	\$ -	\$ 780,000.00	100.0%	ARRA Title I Grants to LEA - est		Y	N
	N	7/1/2013	\$ -	\$ 15,700.00	100.0%	Summer Food Service Program for Children - est		Y	N
	N	7/1/2013	\$ -	\$ 93,700.00	100.0%	Native Hawaiian Education - est		Y	N
	N	7/1/2013	\$ -	\$ 410,500.00	100.0%	School Improvement Grants - est		Y	N
	N	7/1/2013	\$ -	\$ 6,150.00	100.0%	Federal NCLB Migrant Education - est		Y	N
	N	7/1/2013	\$ -	\$ 3,020.00	100.0%	National After School Snack - est		Y	N
Historically, Federal program appropriations were not made to Charter Schools even though they participate in Federal programs via Department of Education.									
Consequently, this information has not been submitted in Budget Briefing Testimony in prior years. For this reason, all federal funding amounts appear in the									
"exceeding appropriation" column this year.									



Department of Education - Charter Schools  
Interdepartment Transfers

Table 10

<u>Actual or Anticipated Date of Transfer</u>	<u>MOF</u>	<u>Pos (P)</u>	<u>Pos (T)</u>	<u>\$\$\$</u>	<u>From Prog ID</u>	<u>Percent of Program ID Appropriation Transferred From</u>	<u>To Prog ID</u>	<u>Percent of Receiving Program ID Appropriation</u>	<u>Reason for Transfer</u>	<u>Recurring (Y/N)</u>
11/5/2013	A			\$ 698,018.00	EDN600	1.1%	EDN100	0.1%	To balance the per pupil allocation based on total enrollment as of October 15, 2013	N
11/16/2012	A			\$ 1,648,200.00	EDN600	3.0%	EDN100	0.2%	To balance the per pupil allocation based on total enrollment as of October 15, 2012	N

Department of Education - Charter Schools  
Federal Awards

Table 11

<u>State Expending Agency</u>	<u>Program ID</u>	<u>Award Number</u>	<u>CFDA Number</u>	<u>Award Description</u>	<u>Awarding Federal Agency</u>	<u>Award Amount</u>	<u>Award Amount Allocated to the Pgm ID in Column B</u>	<u>State Appropriation Symbol</u>	<u>Contact Name</u>	<u>Contact Phone</u>	<u>Contact Email</u>
E	EDN600	18927	84.010	NCLB Title I School Improvement	Dept of Education	\$20,394	\$20,394	Pass through to SPCSC from DOE	Kalima Cayir	586-3775	<a href="mailto:Kalima.Cayir@spcsc.hawaii.gov">Kalima.Cayir@spcsc.hawaii.gov</a>
E	EDN600	17790	84.011	NCLB Migrant Education	Dept of Education	\$18,620	\$18,620	Pass through to SPCSC from DOE	Kalima Cayir	586-3775	<a href="mailto:Kalima.Cayir@spcsc.hawaii.gov">Kalima.Cayir@spcsc.hawaii.gov</a>
E	EDN600	18935	84.010	NCLB Title I Parent Involvement	Dept of Education	\$4,414	\$4,414	Pass through to SPCSC from DOE	Kalima Cayir	586-3775	<a href="mailto:Kalima.Cayir@spcsc.hawaii.gov">Kalima.Cayir@spcsc.hawaii.gov</a>
E	EDN600	19998/19026	84.041	Federal Impact Aid	Dept of Education	\$4,209,282	\$4,209,282	Pass through to SPCSC from DOE	Kalima Cayir	586-3775	<a href="mailto:Kalima.Cayir@spcsc.hawaii.gov">Kalima.Cayir@spcsc.hawaii.gov</a>
E	EDN600	38616	84.010	ARRA - Title I SIG Grant	Dept of Education	\$1,308,875	\$1,308,875	Pass through to SPCSC from DOE	Kalima Cayir	586-3775	<a href="mailto:Kalima.Cayir@spcsc.hawaii.gov">Kalima.Cayir@spcsc.hawaii.gov</a>
E	EDN600	25497	84.196	Ed for Homeless Children and Youth	Dept of Education	\$18,875	\$18,875	Pass through to SPCSC from DOE	Kalima Cayir	586-3775	<a href="mailto:Kalima.Cayir@spcsc.hawaii.gov">Kalima.Cayir@spcsc.hawaii.gov</a>
E	EDN600	19802	84.010	NCLB Title I LEA Grant - Schools	Dept of Education	\$322,830	\$322,830	Pass through to SPCSC from DOE	Kalima Cayir	586-3775	<a href="mailto:Kalima.Cayir@spcsc.hawaii.gov">Kalima.Cayir@spcsc.hawaii.gov</a>
E	EDN600		10.555	National School Lunch Program	US Department of Agriculture	\$260,800 (est.)	\$260,800		Leila Shar	586-3780	<a href="mailto:Leila.Shar@spcsc.hawaii.gov">Leila.Shar@spcsc.hawaii.gov</a>
E	EDN600		10.582	Fresh Fruit and Vegetable Program	US Department of Agriculture	\$97,000 (est.)	\$97,000		Leila Shar	586-3780	<a href="mailto:Leila.Shar@spcsc.hawaii.gov">Leila.Shar@spcsc.hawaii.gov</a>
E	EDN600		10.553	Special Breakfast Program	US Department of Agriculture	\$132,300 (est.)	\$132,300		Leila Shar	586-3780	<a href="mailto:Leila.Shar@spcsc.hawaii.gov">Leila.Shar@spcsc.hawaii.gov</a>

Department of Education - Charter Schools  
Federal Awards

Table 11

<u>State Expending Agency</u>	<u>Program ID</u>	<u>Award Number</u>	<u>CFDA Number</u>	<u>Award Description</u>	<u>Awarding Federal Agency</u>	<u>Award Amount</u>	<u>Award Amount Allocated to the Pgm ID in Column B</u>	<u>State Appropriation Symbol</u>	<u>Contact Name</u>	<u>Contact Phone</u>	<u>Contact Email</u>
E	EDN600		10.555	After School Snack Program	US Department of Agriculture	\$10,200 (est.)	\$10,200		Leila Shar	586-3780	<a href="mailto:Leila.Shar@spcsc.hawaii.gov">Leila.Shar@spcsc.hawaii.gov</a>
E	EDN600		84.367	Title II Assist NHQT to HQT	Dept of Education	\$22,300 (est.)	\$22,300	Pass through to SPCSC from DOE	Kalima Cayir	586-3775	<a href="mailto:Kalima.Cayir@spcsc.hawaii.gov">Kalima.Cayir@spcsc.hawaii.gov</a>
E	EDN600		84.367	Title II High Quality PD	Dept of Education	\$156,800 (est.)	\$156,800	Pass through to SPCSC from DOE	Kalima Cayir	586-3775	<a href="mailto:Kalima.Cayir@spcsc.hawaii.gov">Kalima.Cayir@spcsc.hawaii.gov</a>

Department of Education - Charter Schools  
Definitions

Table 11

COLUMN	DATA ELEMENT	DEFINITION
A	State Expending Agency	State entity authorized to expend the funds as authorized by the appropriation or as delegated by the Governor. Select from drop-down menu. See legend below.
B	Program I.D.	The unique identifier for the specific program responsible for carrying out the program consisting of the abbreviation for the State entity followed by the organization number for the program. <b>Format: XXX###</b>
C	Award Number	The identifying number assigned by the awarding Federal Agency, such as the federal grant number, federal contract number or the federal loan number that appears in the federal award document.
D	CFDA No.	The number associated with the published description of Federal assistance program in the Catalog of Federal Domestic Assistance. Only applies to grants and loans. A list of CFDA codes can be searched at: <a href="https://www.cfda.gov/index?s=program&amp;tab=list&amp;mode=list">https://www.cfda.gov/index?s=program&amp;tab=list&amp;mode=list</a> <b>Format: ##.###.</b>
E	Award Description	Award title and description with purpose of funding action.
F	Awarding Federal Agency	Name of the federal agency that awarded and administers the award on behalf of the funding agency. Select from drow-down menu. See agency list below.
G	Award Amount	For Grants: The total amount of the award. For Loans: The total amount of the loan obligated by the Federal Agency; the face value of the loan. For Contracts: The total amount obligated by the Federal Agency.
H	Award Amount Allocated to the Program ID in Column B	Enter the portion of the total award amount allocated to this Program ID. For example, if a federal award in the amount of \$500 is allocated to only AGR100, the "Award Amount" and the "Award Amount Allocated to the Pgm ID in Column B" would both be \$500. However, if the \$500 will be allocated to AGR100, AGR200 and AGR300, in the amounts of \$100, \$250 and \$150, respectively, the "Award Amount" would be the \$500 for all three program IDs but the "Award Amount Allocated to the Pgm ID in Column B" would be \$100 for AGR100, \$250 for AGR200 and \$150 for AGR300
I	State Appropriation Symbol	The account number established in FAMIS. The appropriation account is a combination of 4 fields: Fund Type, Fiscal Year, Appropriation Account Number, and Dept. Code. If an award has appropriation symbols for multiple fiscal years, enter the symbol for the first fiscal year. <b>Format: X-YY-###-X</b>
J	Contact Name	Name of the individual at the program level responsible for performance of the award.
K	Contact Phone No.	Phone no. of the individual at the program level responsible for performance of the award.
L	Contact Email	Email of the individual at the program level responsible for performance of the award.
	<b>LEGEND:</b>	
	<b><u>State Expending Agency</u></b>	
A (AGR)	Department of Agriculture	
B (BED)	Department of Business, Economic Dev & Tourism	
C (LNR)	Department of Land and Natural Resources	
D (TRN)	Department of Transportation	
E (EDN)	Department of Education	
F (UOH)	University of Hawaii	
G (DEF)	Department of Defense	
H (HTH)	Department of Health	

Department of Education - Charter Schools  
Definitions

Table 11

I (HHL)	Department of Hawaiian Home Lands	
J (JUD)	Judiciary	
K (HMS)	Department of Human Services	
L (LBR)	Department of Labor and Industrial Relations	
M (AGS)	Department of Accounting and General Services	
N (ATG)	Department of Attorney General	
O (BUF)	Department of Budget and Finance	
P (HRD)	Department of Human Resources Development	
Q (GOV)	Office of the Governor	
R (CCA)	Department of Commerce and Consumer Affairs	
S (LTG)	Office of the Lieutenant Governor	
T (TAX)	Department of Taxation	
V1 (PSD)	Department of Public Safety	
Z1 (OHA)	Office of Hawaiian Affairs	
	<b>Federal Agency</b>	
	Dept. of Agriculture	
	Dept. of Commerce	
	Dept. of Defense	
	Dept. of Education	
	Dept. of Energy	
	Dept. of Health and Human Services	
	Dept. of Homeland Security	
	Dept. of Housing and Urban Development	
	Dept. of Justice	
	Dept. of Labor	
	Dept. of State	
	Dept. of the Interior	
	Dept. of the Treasury	
	Dept. of Transportation	
	Dept. of Veterans Affairs	
	Corporation for National & Community Svc	
	Environmental Protection Agency	
	General Services Administration	
	NASA	
	National Science Foundation	
	Nuclear Regulatory Commission	
	Office of Personnel Management	
	Small Business Administration	
	Social Security Administration	
	U.S. Agency for International Development	

Department of Education - Charter Schools  
Non General Funds

Table 12

Name of Fund	Purpose	Statutory Reference	MOF	Beginning FY14	Estimated FY14	Estimated FY14	Estimated FY14	Estimated FY14	Balance in Excess of Program Needs	
				Unencumbered Cash Balance	Revenues	Expenditures and Encumbrances	Net Transfers	Ending Unencumbered Cash Balance		
Kamehameha Schools	Operating		DON	\$ -	\$ 422,000.00	\$ 422,000.00	\$ -	\$ -	\$ -	Kanu
Office of Hawaiian Affairs	Operating		DON	\$ -	\$ 85,000.00	\$ 85,000.00	\$ -	\$ -	\$ -	Kanu
School Store	Student Activities		W	\$ 111,426.00	\$ 15,000.00	\$ 16,500.00	\$ 109,926.00	\$ -	\$ -	Kanu
Lunch Collection	Lunch cost		W	\$ -	\$ 70,000.00	\$ 70,000.00	\$ -	\$ -	\$ -	Kanu
Kamehameha Schools	To develop, enhance and maintain the Hawaiian language through education in the home and school		DON	\$ -	\$ 456,000.00	\$ 456,000.00	\$ -	\$ -	\$ -	Nawahi
Student and Staff lunch collections	Student and teacher meal fees		W	\$ -	\$ 23,000.00	\$ 23,000.00	\$ -	\$ -	\$ -	HAAS
Van Shuttle collections	Student transportation		W	\$ -	\$ 20,000.00	\$ 20,000.00	\$ -	\$ -	\$ -	HAAS
Friends of Waialae	Teacher/Admin support		DON	\$ 3,704.69	\$ 18,300.00	\$ 22,004.69	\$ -	\$ -	\$ -	Waialae
Donations	School support		DON	\$ -	\$ 52,000.00	\$ 52,000.00	\$ -	\$ -	\$ -	Waialae
Students/Parents	Field trip, Meal service, shirts, books, W+, grade level fundraising, yearbook		W	\$ 9,429.34	\$ 437,000.00	\$ 443,379.68	\$ -	\$ 3,049.66	\$ -	Waialae
Student General Fees	supports student activities, student supplies		W	\$ -	\$ 9,970.00	\$ 9,970.00	\$ -	\$ -	\$ -	Hakipu'u
Special Events	supports student activities - camp		B	\$ -	\$ 2,000.00	\$ 2,000.00	\$ -	\$ -	\$ -	Hakipu'u
Interest	Supports servoces fees amd aloha/public relations		B	\$ -	\$ 420.00	\$ 420.00	\$ -	\$ -	\$ -	Hakipu'u
Ka Huli O Haloa - Kamehameha Schools Ho'olako Like Grant	partial funding for program and management staff, some supplies, partial funding of e2020		DON	\$ -	\$ 147,931.00	\$ 147,931.00	\$ -	\$ -	\$ -	Hakipu'u
Ka Huli O Haloa - Kamehameha Schools Accreditation Grant	partial funding for expenses attributed to school accreditation - professional development training, staff stipends, partial funding for accreditation manager and admin support staff		DON	\$ -	\$ 73,250.00	\$ 73,250.00	\$ -	\$ -	\$ -	Hakipu'u
Ka Huli O Haloa - Kamehameha Schools Continuous School Improvement (CSI) Grant	Professional development training to strengthen/expand skills to use data to identify instructional strategies to support student growth		DON	\$ -	\$ 20,000.00	\$ 20,000.00	\$ -	\$ -	\$ -	Hakipu'u
Ka Huli O Haloa - Kamehameha Schools Aina Ulu Grant	Partial funding of Mo'omona Mauka and Makai lab community resource specialists, supplies		DON	\$ -	\$ 41,000.00	\$ 41,000.00	\$ -	\$ -	\$ -	Hakipu'u
Ka Huli O Haloa - Office of Hawaiian Affairs Grant	Funding for reading and math tutors and partial funding for program and management staff		DON	\$ -	\$ 54,652.00	\$ 54,652.00	\$ -	\$ -	\$ -	Hakipu'u
A PennMutual Company	Student Projects		DON	\$ 1,000.00	\$ -	\$ 1,000.00	\$ -	\$ -	\$ -	WHEA
American Institute for Research	Student Projects		DON	\$ 100.00	\$ -	\$ 100.00	\$ -	\$ -	\$ -	WHEA
First Hawaiian Bank	Student Projects		DON	\$ 250.00	\$ -	\$ 250.00	\$ -	\$ -	\$ -	WHEA
Hauula Elementary School	Aloha Kai/Fish Food		DON	\$ 145.00	\$ -	\$ 145.00	\$ -	\$ -	\$ -	WHEA
Hawaii Montessori School	Aloha Kai/Fish Food		DON	\$ 66.00	\$ -	\$ 66.00	\$ -	\$ -	\$ -	WHEA
Holualoa Elementary School	Aloha Kai/Fish Food		DON	\$ 222.00	\$ -	\$ 222.00	\$ -	\$ -	\$ -	WHEA
Honaunau School	Aloha Kai/Fish Food		DON	\$ 129.00	\$ -	\$ 129.00	\$ -	\$ -	\$ -	WHEA
Jack Tours	Aloha Kai/Fish Food		DON	\$ 378.00	\$ -	\$ 378.00	\$ -	\$ -	\$ -	WHEA
John Wilson School	Aloha Kai/Fish Food		DON	\$ 570.00	\$ -	\$ 570.00	\$ -	\$ -	\$ -	WHEA
Kahakai Elementary School	Aloha Kai/Fish Food		DON	\$ 80.00	\$ -	\$ 80.00	\$ -	\$ -	\$ -	WHEA
Kailua Elementary School	Aloha Kai/Fish Food		DON	\$ 163.00	\$ -	\$ 163.00	\$ -	\$ -	\$ -	WHEA
Kamehameha Schools	Aloha Kai/Fish Food		DON	\$ 336.00	\$ -	\$ 336.00	\$ -	\$ -	\$ -	WHEA
Kona Locksmith	Student Projects		DON	\$ 250.00	\$ -	\$ 250.00	\$ -	\$ -	\$ -	WHEA
Laie Elementary School	Aloha Kai/Fish Food		DON	\$ 264.00	\$ -	\$ 264.00	\$ -	\$ -	\$ -	WHEA
Nui Pohaku, LLC	Aloha Kai/Fish Food		DON	\$ 93.00	\$ -	\$ 93.00	\$ -	\$ -	\$ -	WHEA

Department of Education - Charter Schools  
Non General Funds

Table 12

Name of Fund	Purpose	Statutory Reference	MOF	Beginning FY14	Estimated FY14	Estimated FY14	Estimated FY14	Estimated FY14	Balance in Excess of Program Needs	
				Unencumbered Cash Balance	Revenues	Expenditures and Encumbrances	Net Transfers	Ending Unencumbered Cash Balance		
Small World School	Aloha Kai/Fish Food		DON	\$ 150.00	\$ -	\$ 150.00	\$ -	\$ -	\$ -	WHEA
The Ironman Foundation, Inc.	Student Projects		DON	\$ 500.00	\$ -	\$ 500.00	\$ -	\$ -	\$ -	WHEA
Waikoloa Elementary School	Aloha Kai/Fish Food		DON	\$ 260.00	\$ -	\$ 260.00	\$ -	\$ -	\$ -	WHEA
Ho'okako'o/Ho'olako Like	Provide support for charter school innovations		DON	\$ 752,661.00	\$ -	\$ 752,661.00	\$ -	\$ -	\$ -	Waimea
Local School Fundraising/Private donations	Support school activities (i.e. student government, Leadership, etc.)		DON	\$ -	\$ 20,000.00	\$ 20,000.00	\$ -	\$ -	\$ -	Waimea
Student ID's	Fees collected for replacement of student ID's		W	\$ -	\$ 455.00	\$ 455.00	\$ -	\$ -	\$ -	Waimea
Student Meal Collections	Fees for student meals		W	\$ -	\$ 14,500.00	\$ 14,500.00	\$ -	\$ -	\$ -	Waimea
Hawaii Community Foundation	Provide for student/family support		DON	\$ -	\$ 135,118.00	\$ 135,118.00	\$ -	\$ -	\$ -	Waimea
Neilan Foundation	Support for WMS innovations		DON	\$ -	\$ 260,000.00	\$ 260,000.00	\$ -	\$ -	\$ -	Waimea
Office of Hawaiian Affairs	Support for WMS operations		DON	\$ -	\$ 27,500.00	\$ 27,500.00	\$ -	\$ -	\$ -	Waimea
Kamehameha Schools	Support for charter school innovations		DON	\$ -	\$ 483,000.00	\$ 483,000.00	\$ -	\$ -	\$ -	Kamaile
Local School Fundraising/Private donations	Support school activities (i.e. yearbook, robotics, field trips, etc.)		DON	\$ 45,175.90	\$ 15,000.00	\$ 35,000.00	\$ -	\$ -	\$ 25,175.90	Kamaile
Campbell Foundation	Refurbish medical trailer, prepare for use		DON	\$ -	\$ 25,000.00	\$ 25,000.00	\$ -	\$ -	\$ -	Kamaile
Hawaii Community Foundation	Refurbish medical trailer, prepare for use		DON	\$ 10,000.00	\$ -	\$ 10,000.00	\$ -	\$ -	\$ -	Kamaile
Office of Hawaiian Affairs	Support for Kamaile operating expenses		DON	\$ -	\$ 82,000.00	\$ 82,000.00	\$ -	\$ -	\$ -	Kamaile
Kamehameha Schools	Support educational strategic plan		DON	\$ -	\$ 202,500.00	\$ 202,500.00	\$ -	\$ -	\$ -	Kamakau
Misc. Revenue	Misc service fees for meals, uniforms, etc		W	\$ -	\$ 17,712.00	\$ 17,712.00	\$ -	\$ -	\$ -	Kamakau
Student Supply fees	classroom supplies and materials		W	\$ -	\$ 27,000.00	\$ 27,000.00	\$ -	\$ -	\$ -	Voyager
Uniform sales	School uniforms		W	\$ -	\$ 8,000.00	\$ 8,000.00	\$ -	\$ -	\$ -	Voyager
Lunch/Breakfast Fees	School meals		W	\$ -	\$ 35,000.00	\$ 35,000.00	\$ -	\$ -	\$ -	Voyager
Fieldtrips	Field Trip costs		W	\$ -	\$ 15,000.00	\$ 1,500.00	\$ -	\$ -	\$ -	Voyager
NSF/Late pick up fees	bank service fees		W	\$ -	\$ 250.00	\$ 250.00	\$ -	\$ -	\$ -	Voyager
Interest	bank service fees			\$ -	\$ 300.00	\$ 300.00	\$ -	\$ -	\$ -	Voyager
Miscellaneous Donations	Facilities costs		DON	\$ -	\$ 1,000.00	\$ 1,000.00	\$ -	\$ -	\$ -	Voyager
School fundraising	Facilities costs		DON	\$ -	\$ 10,000.00	\$ 10,000.00	\$ -	\$ -	\$ -	Voyager
Parents donations	Facilities costs		DON	\$ -	\$ 10,000.00	\$ 10,000.00	\$ -	\$ -	\$ -	Voyager
Extended Day Fees	A+		W	\$ -	\$ 4,000.00	\$ 4,000.00	\$ -	\$ -	\$ -	Kona Pacific
Fundraising	Various events		DON	\$ -	\$ 25,000.00	\$ 25,000.00	\$ -	\$ -	\$ -	Kona Pacific
Grants	Food Service extended day, gardening program		DON	\$ -	\$ 40,000.00	\$ 40,000.00	\$ -	\$ -	\$ -	Kona Pacific
Logo items	Backpacks/lunchbags, etc.		W	\$ -	\$ 1,500.00	\$ 1,500.00	\$ -	\$ -	\$ -	Kona Pacific
Lunch	Lunch programs		W	\$ -	\$ 7,000.00	\$ 7,000.00	\$ -	\$ -	\$ -	Kona Pacific
Supply Fee	Per pupil annual supply fee		W	\$ -	\$ 10,440.00	\$ 10,440.00	\$ -	\$ -	\$ -	Kona Pacific
Uniforms	Pupil uniform t-shirts		W	\$ -	\$ 11,473.00	\$ 11,473.00	\$ -	\$ -	\$ -	Kona Pacific
Fundraisers	To supplement operational funds		DON	\$ -	\$ 18,300.00	\$ 18,300.00	\$ -	\$ -	\$ -	Volcano
Building Fund	Set aside for capital improvement		DON	\$ 8,952.00	\$ 4,805.00	\$ -	\$ -	\$ -	\$ 13,757.00	Volcano
Bus	collected for bus fees		W	\$ -	\$ 33,000.00	\$ 33,000.00	\$ -	\$ -	\$ -	Volcano
Lunch	collected for lunch fees		W	\$ -	\$ 15,000.00	\$ 15,000.00	\$ -	\$ -	\$ -	Volcano
Kamehameha Schools	Funding for charter school innovations		DON	\$ -	\$ 600,000.00	\$ 600,000.00	\$ -	\$ -	\$ -	Kualapuu
Reverse Analysis Credit	Support Student activities			\$ 3,563.00	\$ 400.00	\$ 3,963.00	\$ -	\$ -	\$ -	Kualapuu
Local School Funds	Support Student activities		W	\$ -	\$ 30,000.00	\$ 30,000.00	\$ -	\$ -	\$ -	Kualapuu
Food Service Cash Sales	Support school food service dept.		W	\$ -	\$ 52,300.00	\$ 52,300.00	\$ -	\$ -	\$ -	Kualapuu

Department of Education - Charter Schools  
Non General Funds

Table 12

<u>Name of Fund</u>	<u>Purpose</u>	<u>Statutory Reference</u>	<u>MOF</u>	<u>Beginning FY14 Unencumbered Cash Balance</u>	<u>Estimated FY14 Revenues</u>	<u>Estimated FY14 Expenditures and Encumbrances</u>	<u>Estimated FY14 Net Transfers</u>	<u>Estimated FY14 Ending Unencumbered Cash Balance</u>	<u>Balance in Excess of Program Needs</u>	
Hawaii Tourism Authority	Support Hawaiian Language Immersion Program Project		DON	\$ -	\$ 40,000.00	\$ 40,000.00	\$ -	\$ -	\$ -	Kualapuu
Office of Hawaiian Affairs	Support Kualapu'u operations		DON	\$ -	\$ 40,500.00	\$ 40,500.00	\$ -	\$ -	\$ -	Kualapuu



Department of Education - Charter Schools  
Vacancy Summary

Table 13

<u>Prog ID/Org</u>	<u>MOF</u>	<u>All Established Positions</u>					<u>Salaries and Wages</u>		
		<u>Total Permanent FTE</u>	<u>Total Vacant Permanent FTE</u>	<u>Total Temporary FTE</u>	<u>Total Vacant Temporary FTE</u>	<u>% Vacant</u>	<u>Budgeted Amount for All Positions</u>	<u>Budgeted Amount for All Filled Positions</u>	<u>Approximate Vacancy Savings Rate</u>
EDN 600	A	18.00	1.00	0.00	0.00	5.6%	\$ 1,005,665	\$ 978,990	2.7%
						-			-
						-			-
						-			-
						-			-
						-			-
Historically, vacancy summaries for charter schools were not provided by Charter Schools and were not submitted in Budget Briefing Testimony.									
Consequently, this information is not available at this time.									

Department of Education - Charter Schools  
Vacancies

Table 14

Prog ID	Date of Vacancy	Expected Fill Date	Position Number	Position Title	Exempt (Y/N)	SR Level	BU Code	Perm Temp (P/T)	FTE	MOF	Budgeted Amount	Actual Salary Last Paid	Authority to Hire (Y/N)	Occupied by 89 Day Hire (Y/N)	# of 89 Hire Appts	Describe if Filled by other Means	Priority # to Retain
EDN 600	7/1/2013	3/31/2013	91914	Clerical Assistant	Y		13	P	1.00	A	\$ 26,675	\$ -	Y	N	0		SPCSC
EDN 600	10/1/2011		59926	Account Clerk II	N	SR08/A	3	P	1.00	A	\$ 27,828	\$ 27,828	Y	N	0		Waialae
EDN 600	7/27/2013			Community Resource Spec.	N	SRNA	3	P	1.00	DON	\$ 37,180	\$ -	Y	N	0		Hakipuu
EDN 600	7/27/2013			Educational Assisstant	N	SR08	3	P	1.00	A	\$ 26,790	\$ -	N	N	0		Hakipuu
EDN 600	7/21/2013		70001	Associate Principal	Y	E04	6	T	1.00	A	\$ -	\$ 100,732	Y	N	0	Coverage provided by SPED associated principal and school principal	Kamaile
EDN 600	7/24/2013	1/6/2014	30006	Special Education Teacher	Y	P03	5	T	1.00	A	\$ 6,440	\$ 7,175	Y	N	0		Kamaile
EDN 600	11/30/2013	12/30/2013	50001	Custodian II	N	BC02	1	T	1.00	A	\$ 36,252	\$ 36,252	Y	N	0		Kamaile
EDN 600	7/24/2013		21000	Teaching Assistant	N	SR14A	3	T	1.00	A	\$ 27,786	\$ 27,786	Y	N	0		Kamaile
EDN 600	11/1/2013	2/1/2014	547802	PCS Administrator	Y		13	P	1.00	A	\$ 51,312	\$ 55,488	Y	N	0		Kamakau
	Historically, vacancies at charter schools were not provided by Charter Schools and were not submitted in Budget Briefing Testimony.																
	Consequently, this information is not complete at this time.																

Department of Education - Charter Schools  
Separations

Table 15

<u>Prog ID/Org</u>	<u>Separation Date</u>	<u>Position Number</u>	<u>Position Title</u>	<u>Exempt (Y/N)</u>	<u>SR Level</u>	<u>BU Code</u>	<u>T/P</u>	<u>MOF</u>	<u>Budgeted FTE</u>	<u>Budgeted Salary</u>	<u>Actual FTE</u>	<u>Actual Salary</u>
EDN600	6/30/2013	94901	Executive Director	Y			P	A	1.00	\$ 120,000.00	1.00	\$ 120,000.00
EDN600	6/30/2013	94920	Chief Financial Officer	Y			P	A	1.00	\$ 91,000.00	1.00	\$ 91,000.00
EDN600	6/30/2013	94921	ARRA Data Coordinator	Y			P	A	1.00	\$ 49,350.00	1.00	\$ 49,350.00
EDN600	6/30/2013	94922	Information Specialist	Y			P	A	1.00	\$ 46,000.00	1.00	\$ 46,000.00
EDN600	6/30/2013	94923	Academic & Applications Spec	Y			P	A	1.00	\$ 72,000.00	1.00	\$ 72,000.00
EDN600	6/30/2013	94924	Clerical Assistant	N			P	A	0.50	\$ 18,938.00	0.50	\$ 18,938.00
EDN600	6/30/2013		Deputy Director	Y			P	A	1.00	\$ 77,918.00	1.00	\$ 77,918.00
Historically, separations at charter schools were not provided by Charter Schools and were not submitted in Budget Briefing Testimony.												
Consequently, this information is not complete at this time.												

Department of Education - Charter Schools  
New Hires

Table 16

<u>Prog ID/Org</u>	<u>New Hire Effective Date</u>	<u>Position Number</u>	<u>Position Title</u>	<u>Exempt (Y/N)</u>	<u>SR Level</u>	<u>BU Code</u>	<u>T/P</u>	<u>MOF</u>	<u>Budgeted FTE</u>	<u>Budgeted Salary</u>	<u>Actual FTE</u>	<u>Actual Salary</u>	
EDN 600	2/12/2013	94901	Executive Director	Y		13	P	A	1.00	\$ 105,866	1.00	\$ 120,000	SPCSC
EDN 600	3/28/2013	94902	Chief Operations Officer	Y		13	P	A	1.00	\$ 88,163	1.00	\$ 81,108	SPCSC
EDN 600	5/8/2013	94906	Information Systems Manager	Y		13	P	A	1.00	\$ 83,395	1.00	\$ 83,395	SPCSC
EDN 600	6/18/2013	94905	Financial Performance Manager	Y		13	P	A	1.00	\$ 85,746	1.00	\$ 85,746	SPCSC
EDN 600	7/1/2013	94903	Academic Performance Manager	Y		13	P	A	1.00	\$ 81,108	1.00	\$ 81,108	SPCSC
EDN 600	7/16/2013	94912	Clerical Supervisor/Office Mgr	Y		13	P	A	1.00	\$ 48,230	1.00	\$ 48,230	SPCSC
EDN 600	7/16/2013	94909	Administrative Support Officer	Y		13	P	A	1.00	\$ 48,230	1.00	\$ 48,230	SPCSC
EDN 600	8/5/2013	94907	Organizational Performance Mgr	Y		13	P	A	1.00	\$ 81,108	1.00	\$ 81,108	SPCSC
EDN 600	8/26/2013	94904	Academic Specialist	Y		13	P	A	1.00	\$ 51,540	1.00	\$ 51,540	SPCSC
EDN 600	10/1/2013	94908	Organizational Performance Spec	Y		13	P	A	1.00	\$ 51,540	1.00	\$ 51,540	SPCSC
	Historically, new hires at charter schools were not provided by Charter Schools and were not submitted in Budget Briefing Testimony.												
	Consequently, this information is not complete at this time.												

Department of Education - Charter Schools  
 Unauthorized Positions

Table 17

<u>Prog ID/Org</u>	<u>Date Established</u>	<u>Legal Authority</u>	<u>Position Number</u>	<u>Position Title</u>	<u>Exempt (Y/N)</u>	<u>SR Level</u>	<u>BU Code</u>	<u>T/P</u>	<u>MOF</u>	<u>FTE</u>	<u>Annual Salary</u>	<u>Filled (Y/N)</u>	<u>Occupied by 89 Day Hire (Y/N)</u>
				None									

Department of Education - Charter Schools  
Overtime

Table 18

Prog ID	Program Title	MOF	FY12 (actual)			FY13 (actual)			FY14 (estimated)			FY15 (budgeted)		
			<u>Base Salary</u> \$\$\$\$	<u>Overtime</u> \$\$\$\$	<u>Overtime</u> Percent	<u>Base Salary</u> \$\$\$\$	<u>Overtime</u> \$\$\$\$	<u>Overtime</u> Percent	<u>Base Salary</u> \$\$\$\$	<u>Overtime</u> \$\$\$\$	<u>Overtime</u> Percent	<u>Base Salary</u> \$\$\$\$	<u>Overtime</u> \$\$\$\$	<u>Overtime</u> Percent
EDN600	State Public Charter School													
	Commission	A	N/A			N/A			\$ 1,005,664	\$ -	0.0%	\$ 1,005,664	\$ -	0.0%
	Charter School													
	Administration Office	A	\$ -	\$ -	0.0%	\$ -	\$ -	0.0%	N/A			N/A		
	[sunsetting 6/30/13]													

Department of Education - Charter Schools  
Overpayments

Table 19

<u>Employee Name</u>	<u>Date of Over-payment</u>	<u>Gross Amount Overpaid</u>	<u>Amount Recovered</u>	<u>Balance</u>	<u>Category</u>				<u>Reason for Overpayment</u>	<u>Referred to Attorney General</u>
					<u>Employed</u>		<u>Not Employed</u>			
					<u>Occurred &gt; 2 Years</u>	<u>Occurred &lt; 2 Years</u>	<u>Occurred &gt; 2 Years</u>	<u>Occurred &lt; 2 Years</u>		
None										

Department of Education - Charter Schools  
Contracts Costs

Table 20

Prog ID	MOF	Frequency		Max Value	Outstanding Balance	Term of Contract			Organization	Category E/L/P/C/ G/S	Description	Method and Frequency of Monitoring	POS Y/N	
		Amount	(M/A/O)			Date Executed	From	To						
EDN 600	A	\$ 7,286	M	\$ 173,943	\$ 49,339	12/1/2009	12/1/2009	11/30/2014	1103, LLC	L	Office Lease	monthly invoices	N	SPCSC
EDN 600	A	\$ 439	M						Xerox Corporation	E	Copier machine, service	monthly invoices	N	SPCSC
EDN 600	A	\$ 327	M	\$ 4,000	\$ 3,268	10/30/2013	10/30/2013	10/30/2014	Xerox Corporation	E	Copier lease	monthly invoices	N	Kanu
EDN 600	A	\$ 18,999	M	\$ 683,964	\$ 113,994	7/1/2011	8/1/2012	7/31/2014	Go Financial Corp	L	Oahu learning center	Fin Mgr/Prop Mgr/ Audit & Financ Committee	N	HTA
EDN 600	A	\$ 524	M	\$ 12,565	\$ 2,620	7/1/2012	7/1/2012	6/30/2014	G. Takayesu & Son, Ltd	L	Oahu learning center	Fin Mgr/Prop Mgr/ Audit & Financ Committee	N	HTA
EDN 600	A	\$ 4,498	M	\$ 161,928	\$ 26,988	7/1/2011	7/1/2012	7/31/2014	TEQlease	E	Apple Computer Lease	Fin Mgr/Prop Mgr/ Audit & Financ Committee	N	HTA
EDN 600	A	\$ 384,848	M	\$ 4,505,757	\$ 2,309,089	7/1/2008	7/1/2008	6/30/2014	K12 Inc.	S	Curriculum OLS, Teaching materials	Fin Mgr/Prop Mgr/ Audit & Financ Committee	Y	HTA
EDN 600	A	\$ 214	M	\$ 7,686	\$ 3,852	7/1/2012	7/1/2012	6/30/2015	GE Capital	E	Copier lease	Fin Mgr/Prop Mgr/ Audit & Financ Committee	N	HTA
EDN 600	A	\$ 45	M	\$ 1,620	\$ 810	7/1/2012	7/1/2012	6/30/2015	Advanced Protection Network	E	Alarm system	Fin Mgr/Prop Mgr/ Audit & Financ Committee	N	HTA
EDN 600	A	\$ 8,280	O/2x	\$ 16,560	\$ 8,280	6/15/2013	7/21/2013	6/30/2014	Pacific American Foundation	S	Science training and consulting	By CEO	Y	Waialae
EDN 600	A	\$ 1,780	M	\$ 101,588	\$ 14,238	9/24/2009	9/24/2009	9/24/2013	Ricoh America	L	3 copiers, 1 fax machine	Equipment efficiency by staff	N	Waialae
EDN 600	A	\$ 510	M	\$ 30,590	\$ 9,714	7/20/2011	8/1/2011	7/31/2016	Xerox Corporation	E	copier lease	billed monthly, checked against meter reading	N	Hakipu'u
EDN 600	A	\$ 201	M	\$ 201	\$ -	12/15/2008	month	month	Central Self Storage	L	storage space for archived documents	monthly invoices	N	Hakipu'u
EDN 600	A/DON	\$ 24,125	A	\$ 24,125	\$ -	8/24/2013	8/31/2013	8/30/2014	Edgenuity (aka e2020)	S	1 year user license - Edgenuity online curriculum	Monitored by educational and technical staff	Y	Hakipu'u
EDN 600	A	\$ 840	M	\$ 10,080	\$ 5,040	7/1/2013	7/1/2013	6/30/2014	K&M Janitorial Svc	S	Cleaning of 3 cottages and 1 office once a week	Monitored by office staff	Y	Hakipu'u



Department of Education - Charter Schools  
Contracts Costs

Table 20

Prog ID	MOF	Amount	(M/A/O)	Max Value	Outstanding Balance	Date Executed	From	To	Organization	E/L/P/C/G/S	Description	Frequency of Monitoring	POS Y/N	
EDN 600	A	Per payroll fees	O - Semi monthly charges	\$ 2,500	\$ -	10/1/2003	year	year	Ceridian	S	Process payroll and taxes and semi monthly	Monitored by Fiscal Manager	Y	Hakipu'u
EDN 600	A	\$ 30,000	M	\$ 360,000	\$ -			open	DayLum Management	L	Rental space for K-8	By the school Business Mgr	N	Connections
EDN 600	A	\$ 10,000	M	\$ 120,000	\$ -	5/18/2012	5/18/2012	6/30/2015	Glory Nani Mau	L	Rental space for 9-12	By the school Business Mgr	N	Connections
EDN 600	A	\$ 500	M	NA	\$ -				L&K Services	S	Cleaning	By the school Business Mgr	Y	Connections
EDN 600	A	\$ 4,800	O - 4 pymts	\$ 19,200	\$ 9,600	7/31/2013	7/31/2013	5/29/2014	Cyril Pahinui	S	Music Lessons, Instructional	By the school Business Mgr	Y	Connections
EDN 600	A	\$ 177	O - bi monthly	NA		12/28/2011	12/28/2011	open	Hilo Air Conditioning	S	AC Maintenance	By the school Business Mgr	Y	Connections
EDN 600	A	\$ 233	O - bi monthly					open	Rainbow Isle Refrigeration	S	AC Maintenance	By the school Business Mgr	Y	Connections
EDN 600	A	\$ 650	M	NA	\$ -	10/10/2003	10/10/2003	open	Countryside Express	S	Trash Removal	By the school Business Mgr	Y	Connections
EDN 600	A	\$ 58	M	NA	\$ -	7/1/2001	7/1/2001	open	Alert Alarm	S	Alarm system	By the school Business Mgr	N	Connections
EDN 600	A	\$ 78	M	NA	\$ -	12/17/2008	12/17/2008	open	Bowman	S	Pest control	By the school Business Mgr	Y	Connections
EDN 600	A	\$ 234	O - Semi monthly charges	NA	\$ -	6/2/2005	6/2/2008	open	Ceridian	S	Process payroll and taxes and semi monthly	By the school Business Mgr	Y	Connections
EDN 600	A, N, W	\$ 4,400	O - weekly	NA	\$ -	7/1/2013	7/1/2013	6/30/2014	Boyd Enterprises	G	Meal vendor	By the school Business Mgr	Y	Connections
EDN 600	A	\$ 5,000	O - 2 pymts	\$ 5,000	\$ 2,500	7/31/2013	7/31/2013	6/5/2014	Elsie Miyazono	S	Math Resource teacher	By the school Business Mgr	Y	Connections
EDN 600	A	\$ 10,000	O - 10 pymts	\$ 10,000	\$ 6,000	10/22/2013	10/22/2013	1/31/2015	Teach for America	S	Service Agreement	By the school Business Mgr	Y	Connections
EDN 600	A	\$ 362	M	\$ 4,344	\$ -	12/17/2010	12/17/2010	12/16/2015	Ricoh America	E	Copier lease	monthly invoices	N	Innovations
EDN 600	A	\$ 30,000	M	\$ 360,000	\$ -	6/1/2012	6/1/2012	5/31/2052	Innovations PCS Foundation	L	Program Occupancy Assessment Agreement	monthly invoices	N	Innovations
EDN 600	A	\$ 786	M	\$ 9,432	\$ -	3/14/2013	3/14/2013	3/13/2017	Ricoh America	E	Copier lease	monthly invoices	N	Innovations
EDN 600	A	\$ 632	M	\$ 36,901	\$ 26,242	6/7/2012	9/1/2012	8/31/2017	Ricoh America	E	Copier lease	Yearly review	N	WHEA
EDN 600	A	\$ 1,347	M	\$ -	\$ -		month	month	State of HI - NELHA	L	Lease rent	Yearly review	N	WHEA
EDN 600	N	\$ 25,000	M	\$ 25,000	\$ 17,826	8/19/2013	7/29/2013	5/31/2014	Andella Keala Kahuanui	C	Provide Ike Hawai'i Instruction and professional development for faculty and students.	Internal procedure for contract mgt	Y	Waimea
EDN 600	N	\$ 814	A	\$ 814	\$ -	11/1/2013	11/1/2003	10/31/2014	Alert Alarm	S	Alarm system	Internal procedure for contract mgt	Y	Waimea
EDN 600	N	\$ 17,000	M	\$ 17,000	\$ 7,912	10/1/2011	7/1/2013	6/30/2014	Xerox Corporation	E	Copiers and service	Internal procedure for contract mgt	N	Waimea

Department of Education - Charter Schools  
Contracts Costs

Table 20

Prog ID	MOF	Amount	(M/A/O)	Max Value	Outstanding Balance	Date Executed	From	To	Organization	E/L/P/C/ G/S	Description	Frequency of Monitoring	POS Y/N	
EDN 600	N	\$ 63,806	A	\$ 63,806	\$ 31,903	6/30/2012	7/15/2013	7/14/2016	Achieve 3000	G	Literacy Program	Internal procedure for contract mgt	N	Waimea
EDN 600	N	\$ 1,500	M	\$ 1,500	\$ 490	6/27/2010	7/1/2013	6/30/2014	Orkin Pest Control	S	Termite/bug specialist'	Internal procedure for contract mgt	Y	Waimea
EDN 600	A	\$ 945	M	\$ 11,340	\$ 5,670	5/9/2013	5/31/2013	5/31/2018	Xerox Corporation	E	Copier machine, service	Internal procedure for contract mgt	N	Kamaile
EDN 600	A	varies	O	\$ 850,000	\$ 465,879	6/24/2013	7/1/2013	6/30/2014	Sodexo	S	Food Service	Internal procedure for contract mgt	Y	Kamaile
EDN 600	A	\$ 15,000	A	\$ 15,000	\$ -	5/28/2013	8/1/2013	6/30/2014	Teach for America	S	Teacher recruitment and training	Annual	Y	Kamaile
EDN 600	A	\$ 6,833	M	\$ 82,000	\$ 41,000	6/1/2013	7/1/2013	6/30/2014	Cyberwest	S	IT Services	Internal procedure for contract mgt	Y	Kamaile
EDN 600	A	varies	O	\$ 19,720	\$ 15,300	7/1/2013	7/1/2013		Russ Woolsey	S	Registration Consultant	Internal procedure for contract mgt	Y	Kamaile
EDN 600	A	\$ 231	M	\$ 2,771	\$ 462	9/1/2013	9/1/2013	8/30/2014	Sonitrol Alarm Systems	E	Alarm system	Internal procedure for contract mgt	N	Kamaile
EDN 600	A	\$ 226	M	\$ 2,709	\$ 1,580	7/1/2013	7/1/2013	6/30/2014	Copesan	S	Pest control	Internal procedure for contract mgt	Y	Kamaile
EDN 600	A	\$ 6,115	O	\$ 24,460	\$ 12,230	10/8/2013	10/1/2013	6/30/2014	Education Northwest	S	Professional Development	Internal procedure for contract mgt	Y	Kamaile
EDN 600	A	varies	O	\$ 30,412	\$ 22,969	10/4/2013	9/21/2013	6/30/2014	Canyon State	S	RTI and SPED consultant	Internal procedure for contract mgt	Y	Kamaile
EDN 600	A	varies	O	\$ 15,000	\$ 10,000	12/12/2013	10/1/2013	6/30/2014	Mr. D Math, LLC	S	Math Consultant	Internal procedure for contract mgt	Y	Kamaile
EDN 600	A	varies	O	\$ 93,400	\$ 71,885	6/1/2013	6/1/2013	5/31/2014	Envision Schools	S	High School Design	Internal procedure for contract mgt	Y	Kamaile
EDN 600	A	varies	O	\$ 93,000	\$ 13,133	6/10/2013	6/1/2013	6/30/2014	Brett Staib	S	Data Analyst Consultant	Internal procedure for contract mgt	Y	Kamaile
EDN 600	N	\$ 8,500	O	\$ 17,000	\$ 8,500	12/12/2013	12/12/2013	completion	Haleakala Solar	S	Install solar panels for new medical trailer	Internal procedure for contract mgt	Y	Kamaile
EDN 600	N	\$ 3,948	O	\$ 7,896	\$ 7,896	1/2/2014	1/2/2014	completion	H&H Development	S	Install new windows on new medical trailer	Internal procedure for contract mgt	Y	Kamaile

Department of Education - Charter Schools  
Contracts Costs

Table 20

Prog ID	MOF	Amount	(M/A/O)	Max Value	Outstanding Balance	Date Executed	From	To	Organization	E/L/P/C/ G/S	Description	Frequency of Monitoring	POS Y/N	
EDN 600	A	\$ 903	O	\$ 3,612	\$ 1,806	8/6/2013	8/6/2013	8/5/2014	Pitney Bowes	E	Mail machine lease	Internal procedure for contract mgt	N	Kamaile
EDN 600	A	varies	M	\$ 40,000	\$ 22,072	7/30/2013	8/1/2013	6/30/2014	Calveena Pua Gomes	S	Ike Hawaii Contractor	Internal procedure for contract mgt	Y	Kamaile
EDN 600	A	\$ 2,393	A	\$ 2,393	\$ -	8/23/2013	10/1/2013	9/30/2014	Starcomm Wireless	E	2-way radios	Internal procedure for contract mgt	N	Kamaile
EDN 600	A	\$ 844	A	\$ 844	\$ -	6/24/2013	7/1/2013	6/30/2014	Lamination House	S	Laminator Maintenance	Internal procedure for contract mgt	Y	Kamaile
EDN 600	N	\$ 1,950	A	\$ 1,950	\$ -	10/29/2013	10/29/2013	6/30/2014	Cyberwest	S	Install CAT 5 E Wire in new portables	Internal procedure for contract mgt	Y	Kamaile
EDN 600	A	\$ 3,480	A	\$ 3,480	\$ -	10/29/2013	10/29/2013	6/30/2014	Cyberwest	S	Install 6 full smart boards	Internal procedure for contract mgt	Y	Kamaile
EDN 600	A	\$ 39,247	A	\$ 39,247	\$ 21,247	7/11/2013	7/11/2013	6/30/2014	SchoolRise Hawaii	C	Educational Consultants	8/13, 2/14, 5/14	Y	Kamakau
EDN 600	A	\$ 16,300	A	\$ 16,300	\$ -	4/8/2013	4/8/2013	5/31/2014	Test Prep Hawaii	C	Educational Consultants-in class svce	4/13, 8/13	Y	Kamakau
EDN 600	A	\$ 12,009	M	\$ 144,096	\$ -	2/1/2010	2/1/2010	8/31/2060		L	Rental Agreement for Facilities	annual	N	Kamakau
EDN 600	A	\$ 513	Q	\$ 9,234	\$ -	4/10/2013	4/10/2013	4/10/2014	Pitney Bowes	E	Postal Machine	monthly invoices	N	Kamakau
EDN 600	A	\$ 4,083	M	\$ 49,000	\$ -	7/16/2013	7/16/2013	6/30/2014	CSMC	C	Back Office Fiscal Mgmt	monthly invoices	Y	Kamakau
EDN 600	A	\$ 585	M	\$ 35,100	\$ -	5/25/2011	5/25/2011	4/30/2016	Marlin Business Bank	E	Copier leases	monthly invoices	N	Kamakau
EDN 600	A	\$ 865	M	\$ 865	\$ -	7/18/2013	8/16/2013	8/15/2018	IKON	E	Equipment rental, service	Annual audit	Y	Voyager
EDN 600	A		M		\$ -	7/9/2013	8/12/2013	5/30/2014	The Lunch Bunch	S	Food Service	Annual audit	Y	Voyager
EDN 600	A	\$ 19,895	M	\$ 19,895	\$ -	5/26/2013	8/1/2013	7/31/2023	Our Redeemer Evangelical Lutheran	L	Rent/Lease	Annual audit	N	Voyager
EDN 600	A		M		\$ -	7/1/2010			Howe Stidger	S	Counseling	CEO	Y	Voyager
EDN 600	A	\$ 500	M	\$ 7,000	\$ -	7/9/2012	7/9/2012	6/9/2017	Ricoh America	E	Copier lease	monthly invoices	N	Kona Pacific
EDN 600	A	\$ 13,750	M	\$ 171,000	\$ -	10/28/2011	10/28/2011	10/28/1951	Friends of KPPCS	L	campus lease	monthly invoices	N	Kona Pacific
	A	\$ 3,600	M	\$ 129,600	\$ 86,400	7/1/2011	7/1/2012	6/30/2015	St. Theresa Parish	L	Facilities rental	monthly invoices	N	WOL
	A	\$ 21,730	M	\$ 1,123,900	\$ 725,155	5/15/2012	5/1/2012	6/30/2016	YWCA	L	Facilities rental	contract policy	N	MBTA
	A	\$ 354	M	\$ 21,251	\$ 19,126	6/13/2013	7/1/2013	7/31/2018	Xerox Corporation	E	Copier, printer equipment	contract policy	N	MBTA
	A	\$ 193	M	\$ 11,580	\$ 9,264	12/7/2012	7/19/2012	7/19/2017	Xerox Corporation	E	Copier, printer equipment	contract policy	N	MBTA
	A	\$ 12,500	A	\$ 18,750	\$ -	1/9/2012	7/1/2013	6/30/2014	State DOE	S	Web conferencing services for staff	contract policy	N	MBTA
	A	\$ 3,000	A	\$ 3,000	\$ -	6/28/2013	9/14/2013	9/15/2014	Monterey Institute for Tech & Educ	S	Online Curriculum	contract policy	N	MBTA
	A	\$ 888	M	\$ 21,311	\$ 10,655	11/9/2011	12/15/2012	12/14/2014	Systemetrics	S	Server Facility	contract policy	N	MBTA

Department of Education - Charter Schools  
Contracts Costs

Table 20

<u>Prog ID</u>	<u>MOF</u>	<u>Amount</u>	<u>(M/A/O)</u>	<u>Max Value</u>	<u>Outstanding Balance</u>	<u>Date Executed</u>	<u>From</u>	<u>To</u>	<u>Organization</u>	<u>E/L/P/C/ G/S</u>	<u>Description</u>	<u>Frequency of Monitoring</u>	<u>POS Y/N</u>	
	A	\$ 4,669	M	\$ 168,088	\$ 130,736	5/11/2012	5/11/2012	5/10/2015	Systemetrics	S	Internet, VOIP phone, service, backup	contract policy	N	MBTA
	A	\$ 3,000	M	\$ 30,000		8/1/2012	8/1/2012	5/30/2014	Na Papa Naue Loa	L	Facilities rental	monthly invoices	N	Ke Ana La'ahana

Department of Education - Charter Schools  
CIP Summary

Table 21

<u>Prog ID</u>	<u>Prog ID</u> <u>Priority</u>	<u>Dept- Wide</u> <u>Priority</u>	<u>Project Title</u>	<u>MOF</u>	<u>FY14 \$\$\$</u>	<u>FY15 \$\$\$</u>
			None			

Department of Education - Charter Schools  
CIP Lapses

Table 22

<u>Prog ID</u>	<u>Act/Year of Appropriation</u>	<u>Project Title</u>	<u>MOF</u>	<u>Amount \$\$\$\$</u>	<u>Reason</u>
		None			

Department of Education - Charter Schools  
Division Resources

Table 23

<u>Division</u>	<u>Associated Program IDs</u>						
Charter Schools	EDN 600						

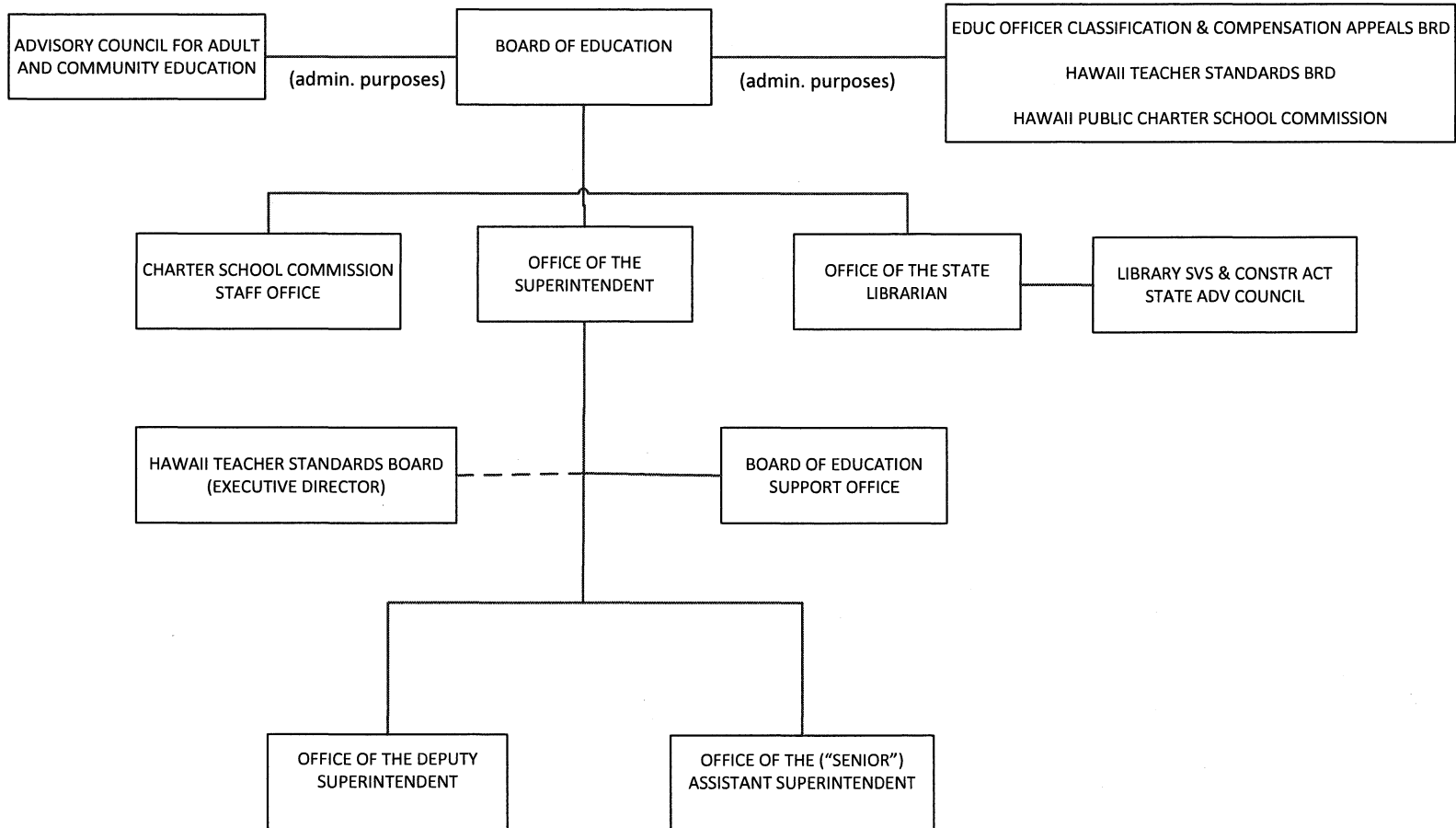
Department of Education - Charter Schools  
Organizational Charts

Table 24

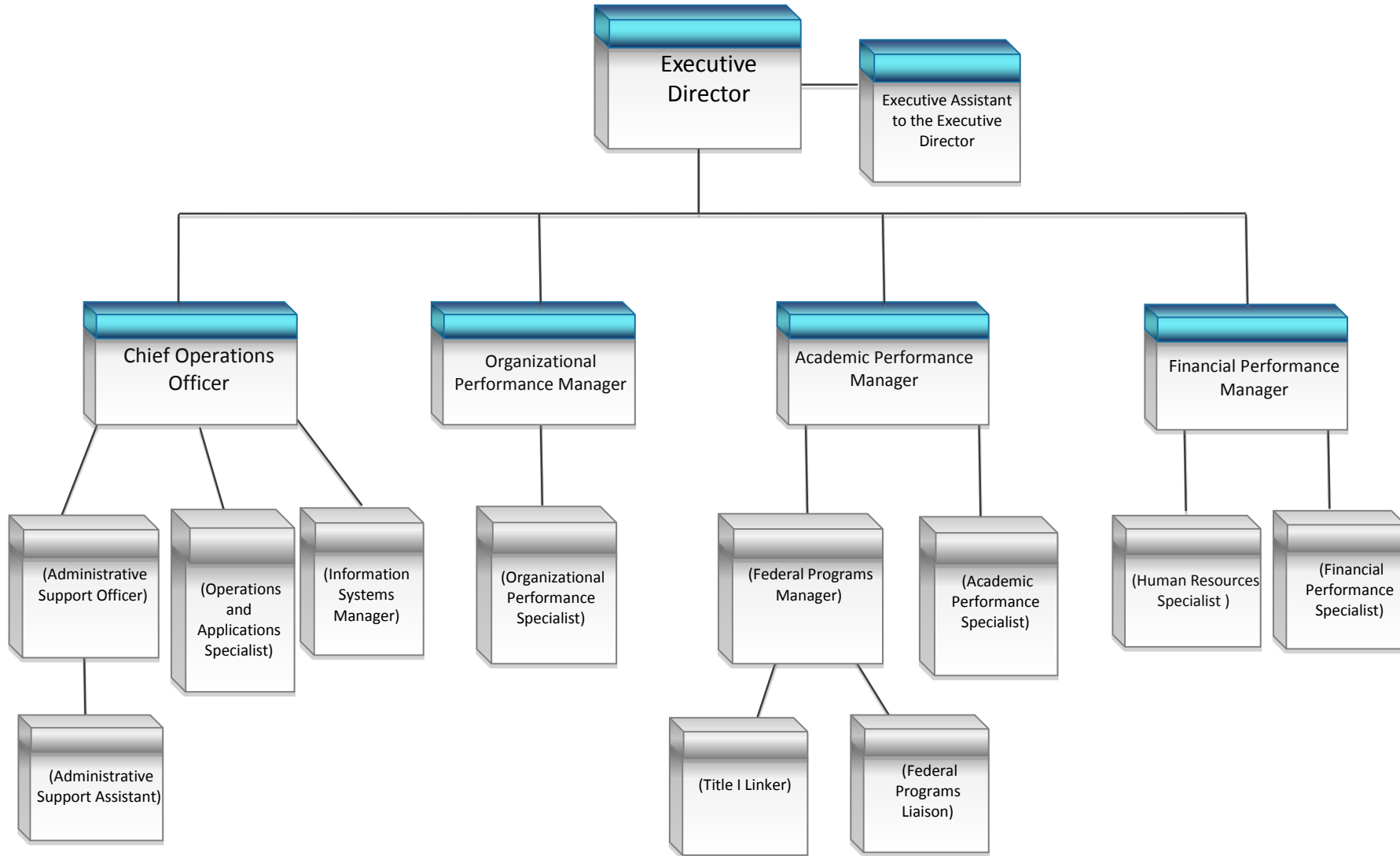
<u>Year of Change</u> <u>FY14/FY15</u>	<u>Page</u> <u>Number</u>	<u>Description of Change</u>
		See attachments



STATE OF HAWAII  
DEPARTMENT OF EDUCATION  
ORGANIZATION CHART



# State Public Charter School Commission Staff Organizational Chart



\* Does not include one (1) vacancy currently unfilled because of shortfall in Federal Program staff salaries.