

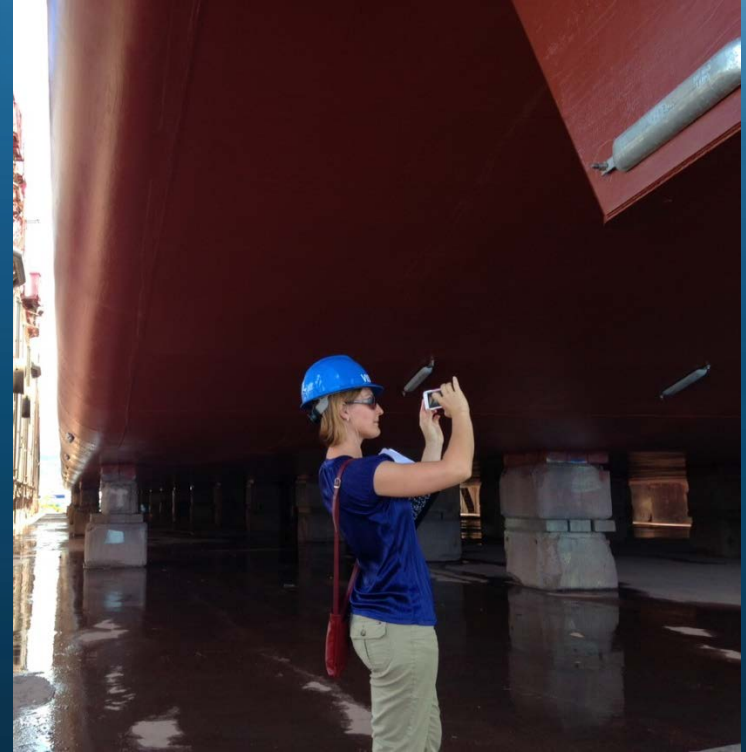
Aquatic Invasive Species

Jono Blodgett

Dept. of Land and Natural Resources

Division of Aquatic Resources

Ballast Water/Hull Fouling



Super Sucker Barges



Urchin Outplanting



Collector Urchin, *Tripneustes gratilla*

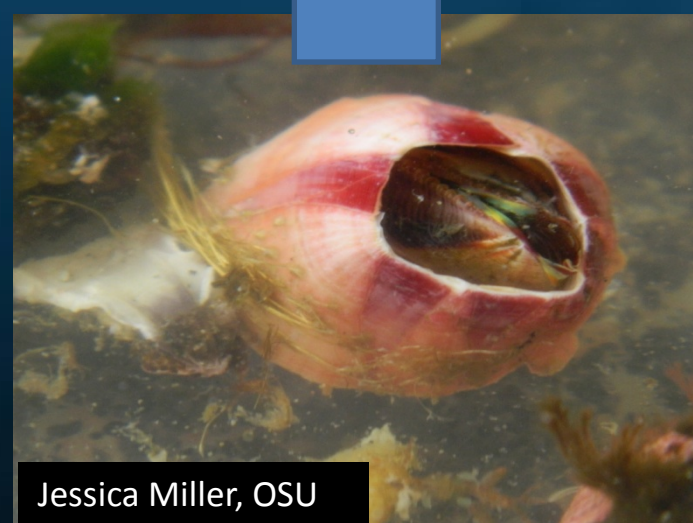
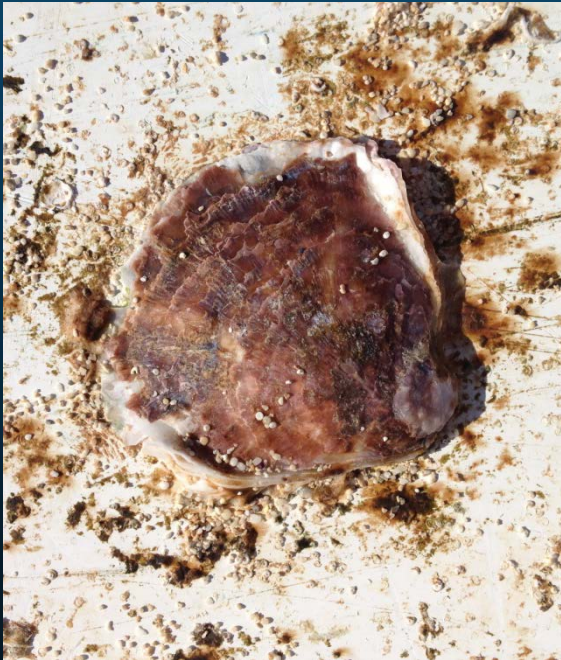
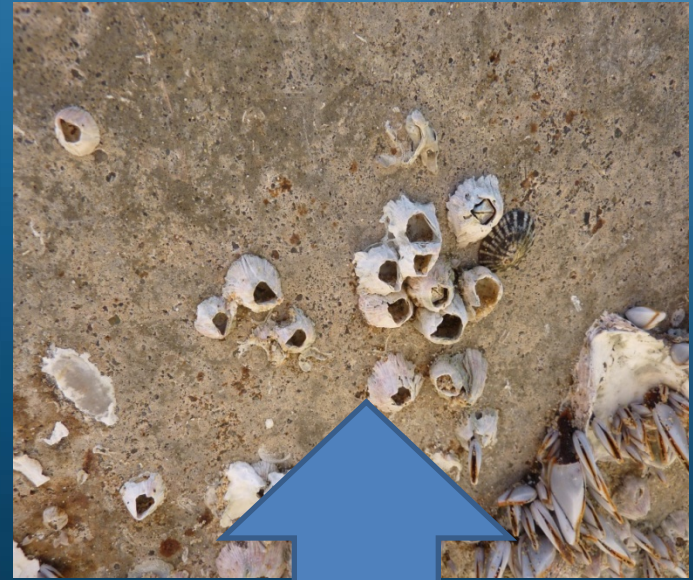
Marine Debris & Alien Species



Photo: Peter Grillo

DLNR - Non-native Species

*In coordination with NOAA and Williams College



Jessica Miller, OSU

Needs & Challenges

- Limited funding/capacity for work on outer islands
 - Invasive algae control on Maui, Molokai, Big Island
 - Post marine debris monitoring
 - Freshwater stream surveys
 - Port inspectors for hull fouling
 - Snowflake coral on Kauai
 - Jellyfish on Molokai and Big Island



Before



Kaunakakai Harbor, Molokai

After



Upside Down Jellyfish