

House District 44/45

Senate District 21

**THE TWENTY-SEVENTH LEGISLATURE  
APPLICATION FOR GRANTS & SUBSIDIES  
CHAPTER 42F, HAWAII REVISED STATUTES**

Log No:

For Legislature's Use Only

Type of Grant or Subsidy Request:

GRANT REQUEST – OPERATING

GRANT REQUEST – CAPITAL

SUBSIDY REQUEST

"Grant" means an award of state funds by the legislature, by an appropriation to a specified recipient, to support the activities of the recipient and permit the community to benefit from those activities.

"Subsidy" means an award of state funds by the legislature, by an appropriation to a recipient specified in the appropriation, to reduce the costs incurred by the organization or individual in providing a service available to some or all members of the public.

"Recipient" means any organization or person receiving a grant or subsidy.

STATE DEPARTMENT OR AGENCY RELATED TO THIS REQUEST (LEAVE BLANK IF UNKNOWN):

DEPARTMENT OF HEALTH

STATE PROGRAM I.D. NO. (LEAVE BLANK IF UNKNOWN): \_\_\_\_\_

**1. APPLICANT INFORMATION:**

Legal Name of Requesting Organization or Individual: Waianae District Comprehensive Health and Hospital Board, Incorporated  
Db: Waianae Coast Comprehensive Health Center

Street Address: 86-260 Farrington Highway

Mailing Address: 86-260 Farrington Highway  
Waianae, Hawaii 96792

**2. CONTACT PERSON FOR MATTERS INVOLVING THIS APPLICATION:**

Name RICHARD P. BETTINI, MPH, MS

Title President and Chief Executive Officer

Phone # 808-697-3457

Fax # 808-697-3687

e-mail wcchc@wcchc.com

**3. TYPE OF BUSINESS ENTITY:**

- NON PROFIT CORPORATION
- FOR PROFIT CORPORATION
- LIMITED LIABILITY COMPANY
- SOLE PROPRIETORSHIP/INDIVIDUAL

**6. DESCRIPTIVE TITLE OF APPLICANT'S REQUEST:**

EMERGENCY MEDICAL SERVICES BUILDING

4. FEDERAL TAX ID #: [REDACTED]

5. STATE TAX ID #: [REDACTED]

**7. AMOUNT OF STATE FUNDS REQUESTED:**

FISCAL YEAR 2015: \$ 2,500,000

**8. STATUS OF SERVICE DESCRIBED IN THIS REQUEST:**

- NEW SERVICE (PRESENTLY DOES NOT EXIST)
- EXISTING SERVICE (PRESENTLY IN OPERATION)

SPECIFY THE AMOUNT BY SOURCES OF FUNDS AVAILABLE AT THE TIME OF THIS REQUEST:

STATE \$ 6,250,000

FEDERAL \$ \_\_\_\_\_

COUNTY \$ \_\_\_\_\_

PRIVATE/OTHER \$ 860,000

[REDACTED]  
RICHARD P. BETTINI, PRESIDENT & CHIEF EXECUTIVE OFFICER  
NAME & TITLE

1/30/2014  
DATE SIGNED

**APPLICATION FOR GRANTS AND SUBSIDIES  
GRANT REQUEST - CAPITAL**

**EMERGENCY MEDICAL SERVICES BUILDING**

**Summary of Request**

The Waianae Coast Comprehensive Health Center (Health Center) is requesting **\$2,500,000** in State capital improvement project (CIP) funding for construction costs related to rebuilding the Health Center's new emergency medical services building to ensure its capability to serve the emergency medical and disaster-related needs, including capacity to address crisis behavioral health intervention and medical needs, for the Waianae Coast and other communities in Leeward Oahu.

The Health Center's 24-hour emergency and radiology department has reached its capacity and its design is no longer adequate for the specialized needs of the more than 19,979 annual emergency room patient visits.

The **total cost of the capital project is \$12,187,696**, of which the Health Center is requesting \$2,500,000 from the Legislature for FY 2014/2015.

The request is in addition to the \$3,750,000 the Legislature approved for the capital project in FY 2006/2007; the \$2,000,000 approved in FY 2012/2013; and the \$500,000 approved in FY 2013/2014.

The Health Center has secured \$7,110,000 for the project. With a \$2,500,000 legislative approval for FY 2014/2015, that would bring a balance to be raised of \$2,577,696 from private sources. The Health Center is actively pursuing local and mainland sources, many who have supported our capital projects in the past.

The construction will focus on rebuilding and creating expanded and more efficient space for emergency services, radiology services, crisis behavioral health intervention services and services related to disaster preparedness since the Health Center is the only medical health establishment between Kaena Point and Ewa. Queen's West Oahu will be opening their emergency room this year, but as has been our experience when the emergency room at St. Francis Medical Center West was open, our Health Center's emergency room was fully utilized by residents of the Waianae Coast.

Since the initial request to the Legislature in 2006, when legislative CIP funding was first approved, the Health Center re-evaluated its needs based on patient growth and access, in response to a request from the past Director of Health, Loretta Fuddy, to address emergency crisis intervention medical services for behavioral health patients, and the rise in construction costs. Consequently, the initial one story building planned in 2006 was determined to be inadequate to meet the expanded and future needs of residents so it was prudent and necessary to increase the size of the building by adding a second story.



There have been multiple hurdles to the start-up of the emergency medical services building project. We were not able to move the emergency services staff and equipment into its temporary location until the Health Center's new Adult Medicine and Pharmacy Building opened. That building experienced several delays but was finally opened in June 2013. Emergency services are temporarily housed in this building until the new emergency medical services building is completed in June 2016. Before further construction activity could take place, we were also required to complete rock fall mitigation work on the hill area fronting the construction sites and to demolish a building that was too close to the new adult medical building.

## **I. BACKGROUND AND SUMMARY**

### **Applicant's Background**

The Waianae Coast Comprehensive Health Center serves the medically underserved community on the Waianae Coast, its primary service area, and the surrounding communities of Kapolei, Ewa and Waipahu.

Serving the community since 1972, the Health Center celebrated its 40th anniversary in 2012. From its start as a one doctor office, the Health Center is the largest, and oldest, of the fourteen community health centers in the State of Hawaii. The strength of the Health Center lies in the strong foundation set by its founders, the vision and expertise of its Board of Directors, the sense of ownership by its staff, patients and community, the years of service and commitment of its management team, and the relationships forged at the community, state and national level.

In 2012, the Health Center served 31,152 patients, the majority being Native Hawaiian (52%), followed by Asian & other Pacific Islanders (26%), and Caucasians (15%). Data shows 67% of patients are at 100% of the federal poverty level or below, 11% are uninsured, and 58% are receiving coverage under QUEST, the State of Hawaii's Medicaid program.

The Waianae Coast is an economically distressed community, with a population of 48,519, ranking lowest in the State for per capita income, highest in the State for number of households receiving public assistance, number of obese adults, adults with diabetes, cancer mortality and diseases of the heart. The Waianae Coast ranks second highest in the State for infant mortality. Compared to the rest of Oahu, the Waianae Coast ranks highest in unemployment and uninsured adults, and second highest for individuals being admitted to the hospital with a schizophrenia diagnosis.

The Health Center's mission just begins to tell our story: "The Waianae Coast Comprehensive Health Center is a healing center that provides accessible and affordable medical and traditional healing services with aloha. The Health Center is a learning center that offers health career training to ensure a better future for our community. The Health Center is also an innovator, using leading edge technology to deliver the highest quality of health care services."

The Health Center achieves its mission by not only serving patients who seek services, but also by incorporating the goal of improving the overall health status of the community it serves.

Programs/services have been designed around an integrated model of care in which the Health Center serves as a patient's health care home.

The vision of the founders of the Health Center, to offer comprehensive health services, has guided the development of services and activities provided today, which include:

Primary care provided through five clinic sites in Waianae, Nanakuli, Kapolei and Waipahu (family practice, pediatrics, women's health, adult medicine and internal medicine); Emergency care (24 hrs); Laboratory (24 hrs); Radiology (24 hrs); Specialty care (General Surgery, Ophthalmology, Obstetrics/Gynecology, Orthopedics, Psychiatry, Psychology, Dermatology, and Chronic Pain Management); Dental services in Waianae and Kapolei; a Pharmacy in Waianae and Kapolei; Preventive health/health education; Medical Nutrition Therapy; WIC; Case management; Homeless Outreach; Chronic disease management; Native Hawaiian Traditional Healing; Integrative/Alternative medicine; Lifestyle enhancement; Adult day care at 4 sites; Behavioral health (mental health and substance abuse treatment); Transportation; Health career training; Health professional training; and Healthy Dining Restaurant services.

The Health Center has operated an emergency room at its main site since 1976, and with additional funding, has been able to provide 24-hour emergency services since 1986.

Along with 24-hour emergency medical services, laboratory, radiology and security services are also provided around the clock, 365 days a year. Physicians, physician assistants, registered nurses, licensed practical nurses, emergency room technicians, and laboratory and radiology technicians provide services for patients, while medical receptionists provide not only intake but support uninsured patients in securing medical coverage under QUEST/Medicaid.

With the expansion to address crisis intervention for behavioral health patients accessing the emergency room, staffing will now include behavioral health specialists.

The emergency room is one of the most heavily utilized on Oahu. For the period July 1, 2012 – June 30, 2013, 12,303 patients were seen in the emergency room through a total of 19,979 visits. This includes 2,778 patients who made a total of 3,285 visits during the hours of midnight to 8:00 a.m.

Of the total number of emergency room visits, 61% were visits by patients covered under QUEST/Medicaid and 7% of visits were by uninsured patients. Trauma, chest pain, congestive heart failure, respiratory distress, labor, mental illness, substance



abuse, physical abuse and other severe signs/symptoms make up one-third of the visits to the emergency room.

### **Goals and Objectives Related to the Request**

The intent of the Capital Improvement Project is to rebuild the emergency services department to ensure its capability to serve the emergency, disaster-related, and crisis behavioral health intervention and medical needs of the Waianae Coast.

### **Public Purpose and Needs to be Served**

The Waianae Coast is an economically distressed community with a population of 48,519. Based on the 2012 State of Hawaii Primary Care Needs Assessment Data Book, which compares primary care service areas throughout the state, the Waianae Coast ranks lowest in the State for per capita income, highest in the State for number of households receiving public assistance, number of obese adults, adults with diabetes, cancer mortality, and diseases of the heart. The Waianae Coast ranks second highest in the State for infant mortality. Compared to the rest of Oahu, the Waianae Coast ranks highest in unemployment, uninsured adults and second highest for individuals being admitted to the hospital with a schizophrenia diagnosis.

The Waianae region is very much removed from the urban core of Honolulu. Commute by car to services outside of the Waianae Coast can take more than an hour. Public transportation takes considerably longer. There is a single road that leads into and out of the Waianae Coast, making the area vulnerable in the event of a disaster. This characteristic of the Waianae region underscores the importance of a well-equipped emergency facility and access to immediate medical care in the event of an emergency or disaster.

Aside from the 19,979 annual emergency room visits, tragic and crisis episodes, in particular those that close off access into and out of the Waianae Coast, there are the potential threats from natural disasters, breeches of homeland security, bioterrorism, and pandemics, that demonstrate how crucial a role the Health Center plays by having 24-hour emergency medical services available on the Waianae Coast.

There is increasing need for mental health services in emergency departments throughout the United States. This situation is the same in Hawaii, as expressed by Loretta Fuddy, past Hawaii State Department of Health Director, in a meeting with our administration requesting that we build our services within the emergency room setting to address behavioral health crisis intervention.

The situation is that physicians in emergency departments are spending increasing amounts of time caring for people with mental illnesses. The reason for the increased utilization of emergency room visits by people with mental health and/or substance use issues is due to several reasons. There have been significant cuts to funding that supports primary, secondary, and tertiary prevention and intervention services. The

consequences and impact of decreased funding to community-based psychiatric and social service programs are far-reaching, including increased crime rates, homelessness, substance abuse and dependence, and emergency room utilization. Individuals with psychiatric illnesses have higher rates of emergency room utilization than the general population. Medicaid beneficiaries account for a large proportion of this population. The result is overcrowded emergency rooms and delays in patients receiving appropriate treatment. Legislation and reinvestment is greatly needed to fund alternative crisis, case management, active community treatment, and prevention services. This is a timely and involved process. In the interim, mental health services in the emergency department is becoming a necessity for ongoing assessment of mental health and/or substance use issues in patients.

The Health Center has a strong and well developed mental health and substance abuse treatment program that is prepared to staff and support crisis intervention services within the emergency room.

The Health Center's participation and role in the statewide Emergency Medical System is substantial. We are connected to the Emergency Management computer, which connects all the hospitals and the EMS system, we have mass casualty/disaster gear issued to us through the Health Care Association, and we have a command structure in place to activate when needed.

The Honolulu Police Department and Child Protective Services also use the Emergency Medical Services at the Health Center. The Honolulu Police Department brings individuals in custody to the emergency room for a medical assessment. Child Protective Services uses the emergency room for pre-placement physical exams when children are removed from the care of their parents/guardians.

### **Target Population**

Health Center patients, as well as the general community and visitors to the community, are able to access services through the emergency room. The emergency room is one of the most heavily utilized on Oahu. For the period July 1, 2012 – June 30, 2013, 12,303 patients were seen in the emergency room through a total of 19,979 visits. This includes 2,778 patients who made a total of 3,285 visits during the hours of midnight to 8:00 a.m.

### **Geographic Coverage**

The majority of emergency room visits are made by Waianae Coast residents (91%) with 9% being patients who reside in Kapolei to Honolulu or who are tourists visiting the area.



## II. SERVICE SUMMARY AND OUTCOMES

### Scope of Work, Tasks and Responsibilities

The Health Center's 24-hour emergency room and radiology room has reached its capacity and its design is no longer adequate for the specialized needs of the more than 19,979 annual emergency room patient visits.

The **total cost of the capital project is \$12,187,696**, of which the Health Center is requesting \$2,500,000 from the Legislature for FY 2014/2015.

The request is in addition to the \$3,750,000 the Legislature approved for the capital project in FY 2006/2007; the \$2,000,000 approved in FY 2012/2013; and the \$500,000 approved in FY 2013/2014.

The Health Center has secured \$7,110,000 for the project. With a \$2,500,000 legislative approval for FY 2014/2015, that would bring a balance to be raised of \$2,577,696 from private sources. The Health Center is actively pursuing local and mainland sources, many who have supported our capital projects in the past.

The construction will focus on rebuilding and creating expanded and more efficient space for emergency services, radiology services, crisis behavioral health intervention services and services related to disaster preparedness since the Health Center is the only medical establishment between Kaena Point and Ewa. Queen's West Oahu will be opening their emergency room this year, but as has been our experience when the emergency room at Hawaii Medical Center West was open, our Health Center's emergency room was fully utilized by residents of the Waianae Coast.

Since the initial request to the Legislature in 2006, when legislative CIP funding was first approved, the Health Center re-evaluated its needs based on patient growth and access, in response to a request from the past Director of Health, Loretta Fuddy, to address emergency crisis intervention medical services for behavioral health patients, and the rise in construction costs. Consequently, the initial one story building planned in 2006 was determined to be inadequate to meet the expanded and future needs of residents so it was prudent and necessary to increase the size of the building by adding a second story.

There have been multiple barriers to the start-up of the emergency medical services building project. We were not able to move the emergency services staff and equipment into its temporary location until the Health Center's new Adult Medicine and Pharmacy Building opened. That building experienced several delays but was finally opened in June 2013. Emergency services are temporarily housed in this building until the new emergency medical services building is completed in June 2016. Before further construction activity could take place, we were also required to complete rock fall mitigation work on the hill area fronting the construction and to demolish a building that was too close to the new adult medical building.

## Projected Annual Timeline

PROJECT TIMELINE	STATUS	COMPLETION DATE
Approved SMA	DPP Review	February 2012
Secure Architectural Firm	Completed	June 1, 2011
Planning and Design	On-going	March 31, 2014
Plan Drawings and Specifications	On-going	June 30, 2014
Bid Project	On-going	September 30, 2014
Award Bid/Contract Execution	On-going	November 30, 2014
Start Construction	On-going	January 31, 2015
Complete Project	NA	June 30, 2016

## Quality Assurance and Evaluation Plans

The Health Center has not only taken part in statewide and national homeland security planning but has also conducted a thorough risk assessment on its own equipment and facilities to gauge its ability to respond to emergency and disaster events on the Waianae Coast. Several mechanisms to determine facility and equipment needs were used, such as internal facility and equipment inspections, and securing external expertise such as mechanical engineering surveys, architectural reviews, electrical energy audits, fire marshal site inspections, and civil engineering site inspections.

The Health Center's assistant director in charge of facilities will work closely with the construction and engineering/architectural firms to ensure that capital building project meet city building code requirements, including federal ADA compliance. The assistant director, medical director and emergency room staff will oversee the implementation and operation of all emergency equipment and will work closely with other City and State emergency departments to coordinate/plan for a systematic approach to responding to emergencies/disasters.

The Health Center has an active and robust quality improvement program. Quality and performance improvement activities of the Health Center represent an integrated multidisciplinary effort by all of its employees.

Medical providers, clinical and non-clinical management, mid-management, and program managers, are active in addressing quality management components at the Health Center through the following committees:

- Peer Review Committee
- Quality Improvement Committee
- Recruitment Committee
- Data Integrity Committee
- Family Practice Specialty Committee



- Pediatrician Specialty Committee
- Women’s Health Committee
- Disaster Preparedness Committee
- Team Office Managers
- Health and Safety Committee
- Clinical Leadership Team
- Leadership Team

Improvement of the overall organization is addressed through the Quality Improvement Committee, the Board of Directors, the Leadership Team and the Clinical Leadership Team.

### Measures of Effectiveness

The measure of effectiveness will be the completion of construction of the emergency services building by June 2016.

## III. FINANCIAL

### Budget

See **Attachment A**, Budget Request By Source of Funds and Capital Project Details.

The Personnel Salaries and Wages and Budget Justification – Equipment and Motor Vehicles forms are not applicable to this request.

### Anticipated Quarterly Funding Requests

For the period 2014 -2015, the Health Center anticipates funding requests as follows:

Quarter 1	Quarter 2	Quarter 3	Quarter 4	Total Grant
\$750,000	\$750,000	\$750,000	\$250,000	\$2,500,000

### Other Sources of Funding Being Sought for FY 2014-2015

The **total cost of the capital project is \$12,187,696**, of which the Health Center is requesting \$2,500,000 from the Legislature for FY 2014/2015.

The request is in addition to the \$3,750,000 the Legislature approved for the capital project in FY 2006/2007; the \$2,000,000 approved in FY 2012/2013; and the \$500,000 approved in FY 2013/2014.

The Health Center has secured \$7,110,000 for the project. With a \$2,500,000 legislative approval for FY 2014/2015, that would bring a balance to be raised of \$2,577,696 from private sources. The Health Center is actively pursuing local and mainland sources, many who have supported our capital projects in the past. These sources include the

Alexander & Baldwin Foundation, Harry and Jeanette Weinberg Foundation, Bank of Hawaii Foundation, William G. Irwin Foundation, and others.

### **State and Federal Tax Credits**

The Health Center has not been granted any state or federal tax credits within the past three years. An application for New Market Tax Credits is being researched for the current project and/or future capital projects.

### **Balance of Unrestricted Current Assets as of December 31, 2013**

As of 11/30/2013, the Health Center had a total unrestricted net assets balance of negative \$17,000, after accounting for investments in fixed assets of \$39 million. This entire amount has been restricted by the Health Center's Board of Directors for operating and building system replacement reserves. The Health Resources and Services Administration (HRSA) requires all Community Health Centers to keep an operating reserve at an equivalent of two months' worth of their respective annual operating expenses. For the Health Center, this translates to a reserve amount of \$7.75 million based on our annual operating budget of \$46.5 million this fiscal year. As is, the Health Center is not meeting the HRSA reserve requirement even before accounting for the need for its building system replacement reserve fund.

## **IV. EXPERIENCE AND CAPABILITY**

### **A. Necessary Skills and Experience**

The Health Center is a non-profit community health center that has served the community for 40 years. The growth of both the physical and program aspects of the Health Center over the past 40 years demonstrates the Health Center's experience and ability to plan and manage financial resources and capital development activities.

The Health Center has managed a number of large capital development projects over the years, including the building of a new lab and dental facility, a dining/restaurant facility and wellness center, a new 3-story medical building for women's health, pediatrics and training, a new substance abuse treatment services building, and numerous renovations and expansions of its facilities at its main center and satellite clinics. A two-story integrated adult medicine and pharmacy building is currently being built and will open in April.

Emergency services have been provided since 1976 and since 1986 have operated 24 hours, 365 days a year along with laboratory and radiology services.

The Health Center has been ranked as one of the top three largest non-profit service provider in the state for many years (Pacific Business News), managing an annual budget of over \$50 million.



## **B. Facilities**

The Health Center's 16-plus acre campus is situated on state and Hawaiian Home Land parcels centrally located on the Waianae Coast. Permanent structures have been constructed or renovated through funding support from the state and federal government, and private foundations. The Health Center's main upper campus is located on state land managed by the Department of Land and Natural Resources.

The upper campus houses primary care clinics, a specialty clinic, a 24-hour emergency room, a 24-hour radiology, a 24-hour laboratory, pharmacy, as well as a dental clinic, case management, outreach, a dining facility, Native Hawaiian healing, and administrative and information technology functions. Located at the lower campus of the main center are behavioral health and substance abuse treatment services, the Women, Infant and Children (WIC) program, nutrition and health education services, and health professional education. Satellite primary care clinics are located in the Nanakuli Shopping Center, the Waianae Mall, the FilCom Center in Waipahu, and in Kapolei. ADA guidelines are followed on all construction activities.

The emergency department is currently set-up with four exam rooms, a two-bed critical care room, and a minor surgery room that doubles as an emergency labor and delivery area. Severe trauma patients are stabilized through the Health Center's emergency room and transported to a hospital when a bed becomes available.

The emergency room is equipped with a neonatal warmer and neonatal heart monitor, as well as a child/adult heart monitor, defibrillator, pacer, IV infusers, and ventilator. The emergency room can provide, for example, much of the latest airway management supplies, neonatal resuscitation supplies, and the latest thrombolytics (clot busters) for use in patients having a heart attack. A new ultrasound is also available reducing the need for referrals to hospitals for such screening.

The rebuilding and consequent reconfiguration of the emergency department will be able to increase treatment and counseling rooms, increase triage rooms, add trauma rooms for immediately life threatening illnesses and injuries, add and expand imaging/x-ray rooms and add rooms to support patients and/or family members experiencing a crisis situation.

Additional rooms are needed for short term stays to accommodate patients who, for example, are awaiting psychiatric or drug treatment beds at other facilities or who need to be monitored, such as for those having insulin-related or asthma-related problems. An isolation room is needed for individuals who present with a contagious condition. A birthing room is needed to accommodate emergency deliveries, many of which are teens and/or women who have not sought prenatal care. Many patients can be stabilized through the emergency room and sent home or stabilized enough that trauma care would not be needed if admitted to the hospital.

**V. PERSONNEL: PROJECT ORGANIZATION AND STAFFING**

**A. Proposed Staffing, Staff Qualifications, Supervision and Training**

Staffing is not applicable in this request.

**B. Organization Chart**

See **Attachment B** for organization-wide chart.

**C. Compensation**

The following are the salaries of the three highest paid positions at the Health Center in 2013:

<b>Position</b>	<b>Salary</b>
President/Chief Executive Officer	\$245,608
Director of Behavioral Services/Psychiatrist	\$229,279
Chief Medical Officer	\$225,846

**VI. OTHER**

**A. Litigation**

None.

**B. Licensure or Accreditation**

Not applicable.



# ATTACHMENT A

**BUDGET REQUEST BY SOURCE OF FUNDS**  
(Period: July 1, 2014 to June 30, 2015)

Appanae Coast Comprehensive Health Center

<b>BUDGET CATEGORIES</b>	<b>Total State Funds Requested (a)</b>	<b>(b)</b>	<b>(c)</b>	<b>(d)</b>
A. PERSONNEL COST				
1. Salaries				
2. Payroll Taxes & Assessments				
3. Fringe Benefits				
TOTAL PERSONNEL COST				
B. OTHER CURRENT EXPENSES				
1. Airfare, Inter-Island				
2. Insurance				
3. Lease/Rental of Equipment				
4. Lease/Rental of Space				
5. Staff Training				
6. Supplies				
7. Telecommunication				
8. Utilities				
9				
10				
11				
12				
13				
14				
15				
16				
17				
18				
19				
20				
TOTAL OTHER CURRENT EXPENSES				
C. EQUIPMENT PURCHASES				
D. MOTOR VEHICLE PURCHASES				
E. CAPITAL	2,500,00			
<b>TOTAL (A+B+C+D+E)</b>	<b>2,500,000</b>	<b>0</b>		
<b>SOURCES OF FUNDING</b>		Budget Prepared By:		
(a) Total State Funds Requested		<div style="background-color: black; width: 100%; height: 40px; display: flex; justify-content: space-between; align-items: center;"> <span>[REDACTED]</span> <span>Phone</span> </div> <div style="background-color: black; width: 100%; height: 40px; display: flex; justify-content: space-between; align-items: center;"> <span>[REDACTED]</span> <span>Date</span> </div>		
(b)				
(c)				
(d)				
<b>TOTAL BUDGET</b>		Richard P. Bettini, MPH, MS, President & Chief Executive Officer Name and Title (Please type or print)		



## BUDGET JUSTIFICATION PERSONNEL - SALARIES AND WAGES

Applicant: Waianae Coast Comprehensive Health Center

Period: July 1, 2014 to June 30, 2015

POSITION TITLE	FULL TIME EQUIVALENT	ANNUAL SALARY A	% OF TIME ALLOCATED TO GRANT REQUEST B	TOTAL STATE FUNDS REQUESTED (A x B)
Not Applicable				\$ -
				\$ -
				\$ -
				\$ -
				\$ -
				\$ -
				\$ -
				\$ -
				\$ -
				\$ -
				\$ -
				\$ -
				\$ -
				\$ -
				\$ -
				\$ -
<b>TOTAL:</b>				
<b>JUSTIFICATION/COMMENTS:</b>				

## BUDGET JUSTIFICATION - EQUIPMENT AND MOTOR VEHICLES

Applicant: Waianae Coast Comprehensive Health      Period: July 1, 2014 to June 30, 2015

DESCRIPTION EQUIPMENT	NO. OF ITEMS	COST PER ITEM	TOTAL COST	TOTAL BUDGETED
Not Applicable			\$ -	
			\$ -	
			\$ -	
			\$ -	
			\$ -	
<b>TOTAL:</b>			\$ -	
JUSTIFICATION/COMMENTS:				

DESCRIPTION OF MOTOR VEHICLE	NO. OF VEHICLES	COST PER VEHICLE	TOTAL COST	TOTAL BUDGETED
Not Applicable			\$ -	
			\$ -	
			\$ -	
			\$ -	
			\$ -	
<b>TOTAL:</b>			\$ -	
JUSTIFICATION/COMMENTS:				



## BUDGET JUSTIFICATION CAPITAL PROJECT DETAILS

Applicant: Waianae Coast Comprehensive Hea

Period: July 1, 2014 to June 30, 2015

FUNDING AMOUNT REQUESTED							
TOTAL PROJECT COST	ALL SOURCES OF FUNDS RECEIVED IN PRIOR YEARS		STATE FUNDS REQUESTED	OTHER SOURCES OF FUNDS REQUESTED	FUNDING REQUIRED IN SUCCEEDING YEARS		
	2006-2007	FY: 2012-2013	FY: 2013-2014	FY:2014-2015	FY:2013-2014	FY:2014-2015	FY:2015-2016
PLANS						N/A	N/A
LAND ACQUISITION	300000						
DESIGN (A&E; soft and hard costs)							
CONSTRUCTION	3450000	2000000	500000	2500000	2577696		
EQUIPMENT							
<b>TOTAL</b>	<b>3750000</b>	<b>2000000</b>	<b>500000</b>	<b>2,500,000</b>	<b>2,577,696</b>		
<b>JUSTIFICATION/COMMENT</b> Total CIP Budget: \$12,187,696. Total State Funds Received to date: \$6,250,000; Total Private Funds Received to date: \$860,000. Balance Needed (State: \$2,500,000) (Private: \$2,577,696)							

**DECLARATION STATEMENT OF  
APPLICANTS FOR GRANTS AND SUBSIDIES PURSUANT TO  
CHAPTER 42F, HAWAII REVISIED STATUTES**

The undersigned authorized representative of the applicant certifies the following:

- 1) The applicant meets and will comply with all of the following standards for the award of grants and subsidies pursuant to Section 42F-103, Hawaii'i Revised Statutes:
  - a) Is licensed or accredited, in accordance with federal, state, or county statutes, rules, or ordinances, to conduct the activities or provide the services for which a grant or subsidy is awarded;
  - b) Complies with all applicable federal and state laws prohibiting discrimination against any person on the basis of race, color, national origin, religion, creed, sex, age, sexual orientation, or disability;
  - c) Agrees not to use state funds for entertainment or lobbying activities; and
  - d) Allows the state agency to which funds for the grant or subsidy were appropriated for expenditure, legislative committees and their staff, and the auditor full access to their records, reports, files, and other related documents and information for purposes of monitoring, measuring the effectiveness, and ensuring the proper expenditure of the grant or subsidy.
- 2) The applicant meets the following requirements pursuant to Section 42F-103, Hawaii'i Revised Statutes:
  - a) Is incorporated under the laws of the State; and
  - b) Has bylaws or policies that describe the manner in which the activities or services for which a grant or subsidy is awarded shall be conducted or provided.
- 3) If the applicant is a non-profit organization, it meets the following requirements pursuant to Section 42F-103, Hawaii'i Revised Statutes:
  - a) Is determined and designated to be a non-profit organization by the Internal Revenue Service; and
  - b) Has a governing board whose members have no material conflict of interest and serve without compensation.

Pursuant to Section 42F-103, Hawaii'i Revised Statutes, for grants or subsidies used for the acquisition of land, when the organization discontinues the activities or services on the land acquired for which the grant or subsidy was awarded and disposes of the land in fee simple or by lease, the organization shall negotiate with the expending agency for a lump sum or installment repayment to the State of the amount of the grant or subsidy used for the acquisition of the land.

Further, the undersigned authorized representative certifies that this statement is true and correct to the best of the applicant's knowledge.

Waianae Coast Comprehensive Health Center  
(Typed Name of Individual or Organization)

January 30, 2014  
(Date)

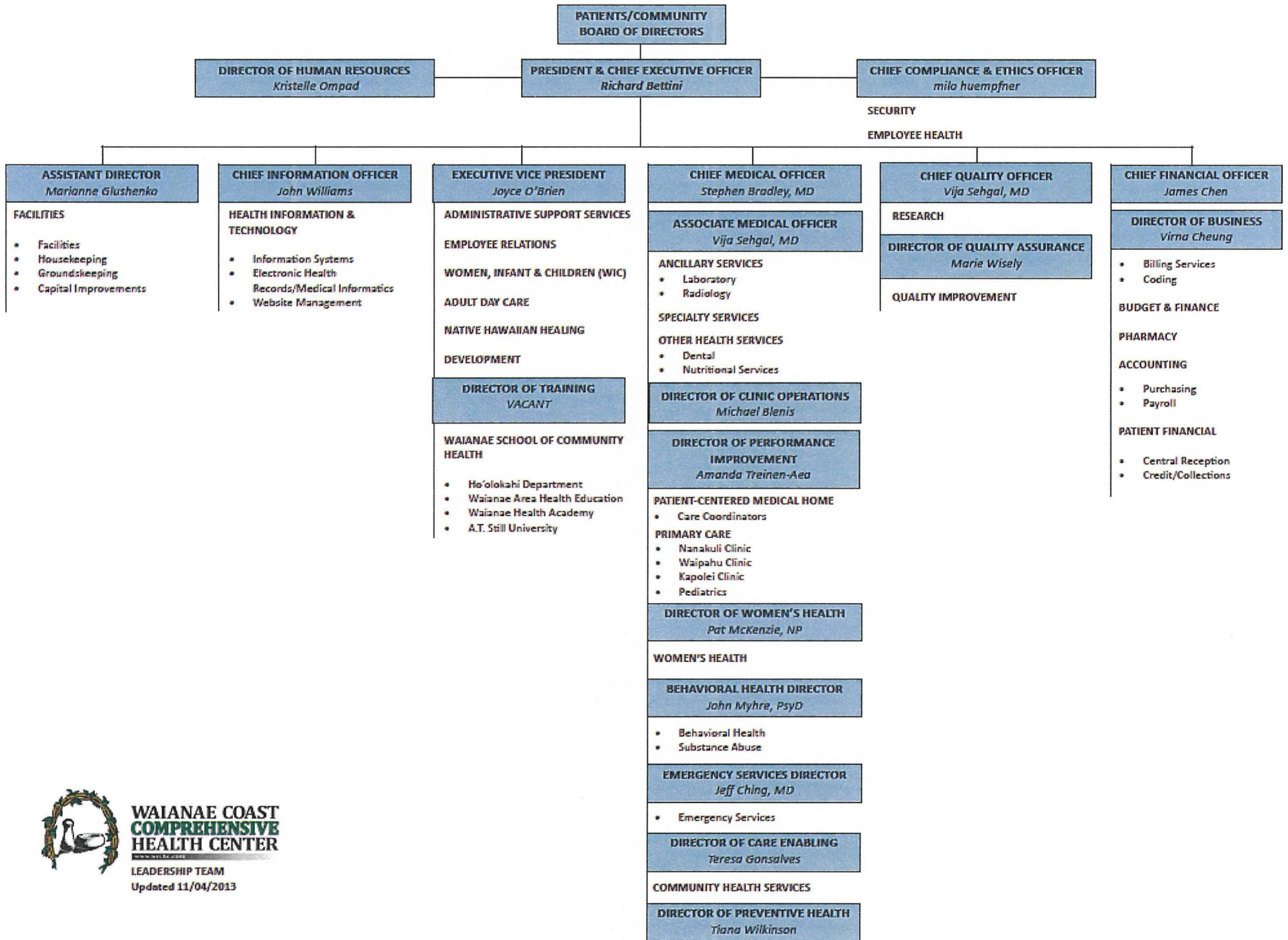
Richard P. Bettini, MPH, MS  
(Typed Name)

President and Chief Executive Officer  
(Title)



# ATTACHMENT B

**WAIANAE COAST COMPREHENSIVE HEALTH CENTER  
ORGANIZATIONAL CHART**



**WAIANAE COAST  
COMPREHENSIVE  
HEALTH CENTER**

LEADERSHIP TEAM  
Updated 11/04/2013