

House District 25

Senate District 13

**THE TWENTY-SEVENTH LEGISLATURE
APPLICATION FOR GRANTS AND SUBSIDIES
CHAPTER 42F, HAWAII REVISED STATUTES**

Log No:

For Legislature's Use Only

Type of Grant or Subsidy Request:

GRANT REQUEST – OPERATING

GRANT REQUEST – CAPITAL

SUBSIDY REQUEST

"Grant" means an award of state funds by the legislature, by an appropriation to a specified recipient, to support the activities of the recipient and permit the community to benefit from those activities.

"Subsidy" means an award of state funds by the legislature, by an appropriation to a recipient specified in the appropriation, to reduce the costs incurred by the organization or individual in providing a service available to some or all members of the public.

"Recipient" means any organization or person receiving a grant or subsidy.

STATE DEPARTMENT OR AGENCY RELATED TO THIS REQUEST (LEAVE BLANK IF UNKNOWN):

HEALTH

STATE PROGRAM I.D. NO. (LEAVE BLANK IF UNKNOWN): _____

1. APPLICANT INFORMATION:

Legal Name of Requesting Organization or Individual:

Hawaii Institute of Integrative Health

Dbas: Hawaii Health Foundation

Street Address: 50 S. Beretania St. Suite C-119B

Mailing Address:

Hawaii Health Foundation

50 S. Beretania St. Suite C-119B

Honolulu, HI 96813

2. CONTACT PERSON FOR MATTERS INVOLVING THIS APPLICATION:

Name TERRY SHINTANI, MD, JD, MPH

Title President

Phone # 808 628-8784

Fax # 808 538-9050

e-mail drshintani@gmail.com

3. TYPE OF BUSINESS ENTITY:

NON PROFIT CORPORATION

FOR PROFIT CORPORATION

LIMITED LIABILITY COMPANY

SOLE PROPRIETORSHIP/INDIVIDUAL

6. DESCRIPTIVE TITLE OF APPLICANT'S REQUEST:

HAWAII HEALTH FOUNDATION

INTEGRATIVE MEDICNE PROJECT

4. FEDERAL TAX ID #: [REDACTED]

5. STATE TAX ID #: [REDACTED]

7. AMOUNT OF STATE FUNDS REQUESTED:

FISCAL YEAR 2015: \$ 498,832

8. STATUS OF SERVICE DESCRIBED IN THIS REQUEST:

NEW SERVICE (PRESENTLY DOES NOT EXIST)

EXISTING SERVICE (PRESENTLY IN OPERATION)

SPECIFY THE AMOUNT BY SOURCES OF FUNDS AVAILABLE AT THE TIME OF THIS REQUEST:

STATE \$ _____

FEDERAL \$ 50,000

COUNTY \$ _____

PRIVATE/OTHER \$ 90,000

TERRY SHINTANI, MD, JD, MPH, PRESIDENT
NAME & TITLE

1-30-2014
DATE SIGNED

HAWAII HEALTH FOUNDATION INTEGRATIVE MEDICINE PROJECT

I. BACKGROUND AND SUMMARY

1. Brief description of applicant's background

Background of the Hawaii Health Foundation

Vision: Reduction in Health Care Costs

In 2006, the Hawaii Health Foundation used state funding wisely and submitted a report of the successful demonstration project to the State Legislature showing a 24% reduction in need for reduction in cost medication through the use of Hawaii Health Foundation and the Hawaii Diet Program. This current grant request seeks funds to operationalize this "Integrative Medicine" approach to help control health cost while truly improving health rather than just increasing funding for medication which ultimately never produces real health.

This is a crucial dream for Hawaii whose health care costs continue to rise out of control, the average person cannot afford health insurance, doctors are leaving, and Hospitals are going broke. This is also of vital importance to Native Hawaiians who suffer the highest rates of death from chronic disease in the nation.

Vision: Hawaii as a World Center of Health

Now, Imagine a Hawaii that is a world leader in improving health through integrative and lifestyle medicine where people look to Hawaii as a source of healing expertise, information, and as a gathering place to share this information.

With this dream in mind, the Hawaii Health Foundation (dba for Hawaii Institute of Integrative Health) was founded in 1995 by Kenneth Brown, the Board Chair of the largest Hospital in Hawaii, (the Queen's Medical Center); Kamaki Kanahale, Founder of the Statewide Council of Hawaiian Homestead Associations (SCHHA); Hooipo DeCambra, the Board Chair of the largest community health center in Hawaii, (the Waianae Coast Comprehensive Health Center); Ronald Sakamoto, a prominent health-care attorney, and Terry Shintani, MD, JD, MPH, award-winning physician widely recognized in Hawaii for promoting health and nutrition, especially among high-risk communities. Joining these founding members of the board of directors are Jim Jacoby, CEO of Jacoby Development, the nation's leading environmentally conscious land development company and Dr. Earl Bakken, inventor of the transistor pacemaker and founder of Medtronic, the largest producer of implantable medical devices.

Mission: To Promote Health (not just "medicine")

The Foundation was started in response to the most serious health problem faced by Hawaii and the U.S. – which kills over 67% of all Americans - nutrition-related diseases (heart disease, cancer, diabetes, etc.) and obesity. The founders recognized that the cause of this problem – nutrition - was being neglected by the health-care system in favor of the use of drugs and surgery. In 1989, Dr. Shintani started a nutrition and traditional values based health program in

Hawaii in a community with one of the highest risk populations with among the highest rates of obesity and poverty in the nation.

Award-Winning Programs

This program was so effective and innovative that it won the highest national award from the U.S. Secretary of Health and Human Services in 1992. This created great interest across the nation. Because this interest, the founders created the Hawaii Health Foundation as a vehicle to promote health using this innovative community-based strategy with a focus on nutrition, an integrative medicine approach and traditional values. The Hawaii Health Foundation has used this approach to work to positively influence the health of people in Hawaii.

The Foundation has conducted numerous programs in Hawaii and elsewhere and over 1000 community health presentations to almost every imaginable group such as University of Hawaii School of Medicine, public and private schools at every level, physicians, nurses, dietitians, low-income housing, homesteads, senior groups, lawyers, substance abuse treatment houses, prisons, government agencies and workplaces to name a few. It has also conducted three - week diet programs in conjunction with community health centers, community groups and schools. One of its most successful programs was the Hawaii Diet program in which it worked with Hawaii's governor and the Hawaiian Homestead community of Papakolea to create a program that was so successful that it was featured on Dateline NBC.

From that program the Hawaii Diet book was published with its royalties supporting these programs. Currently it is overseeing an innovative program to provide healthy food in the community through the largest local restaurant chain in Hawaii, Zippy's, Inc. Through this program, it is estimated that over 900,000 no cholesterol, low fat meals have been provided to the community. Royalties from this program also are used to support the programs and health promotion advocacy conducted by the Foundation.

Integrative Medicine Center

In an effort to promote Hawaii as a World Center of Health, the Hawaii Health Foundation is initiating a number of integrated initiatives.

The first is the Integrative Medicine Health Cost Reduction Project designed around Dr. Shintani's Hawaii Diet program to operationalize the integrative approach to health in reducing the need for medication and cost of health care for high risk individuals. A preliminary study on the effectiveness of this was completed and reported to the State Legislature in 2006.

The Second is to assist in the development of a sustainable integrative medicine practice to be tied to the John A Burns School of Medicine to enhance its role in this fast growing field.

The Third is the design and construction of a world class integrative medicine center for which a companion CIP grant request has been submitted.

This grant application asks the legislature to support these initiatives

2. Goals and objectives

1. To help improve the health of Hawaii by implementing a demonstration project that demonstrates a reduction in obesity and related diseases through an emphasis on diet and lifestyle; and by creating an electronic means by which to market and distribute this information to the general public.
2. To help reverse spiraling health care costs by creating a model program to show a reduction in cost of medication by improving health through diet and lifestyle.
 - i. To operationalize the cost effectiveness of a diet and lifestyle management program in the reduction of prescription drug cost of patients who have reversible chronic nutrition-related diseases.
 - ii. To obtain Medicare approval for reimbursement for the Hawaii Diet and lifestyle management program in the reduction of obesity, cholesterol, blood pressure, blood sugar and other nutrition related diseases
3. To enhance Hawaii's position as a world center for health through the support of HHF's initiatives in the fields of Lifestyle Medicine, Integrative Medicine, and Native Hawaiian Health, and the development of an integrative medicine/wellness/Hawaiian health complex.
 - i. To continue to develop a model Lifestyle Medicine program that provides and intervention to reverse obesity and obesity related diseases.
 - ii. To Seek Medicare Approval for the Hawaii Diet as reimbursable for metabolic conditions such as diabetes, heart disease and hypertension
 - iii. To work with the John A. Burns School of Medicine's Integrative Medicine program to become a world class program.
 - iv. To support efforts to preserve Native Hawaiian Healing arts
 - v. To complete plans for an integrative medicine/wellness/ and Hawaiian healing center and office complex.

1. PUBLIC PURPOSE AND NEED SERVED

- i. **REDUCE HEALTH CARE COSTS:** Health care costs are soaring in Hawaii and there is no end in sight. The burden of health care costs are falling on the general public, Hospitals, and physicians.

- a. The public is finding that the benefits of a good economy are being swallowed up by increased health care premiums.
- b. Hospitals are finding that they may require up to \$100,000,000 in state funding to keep them afloat.
- c. Physicians are simply leaving Hawaii because of low reimbursement and high costs.

Across the nation, health care costs have soared out of control virtually everywhere and insurance premiums rise each year at nearly triple the rate of inflation. The uninsured population is so large because of the cost of health care, and while Hawaii is a leader in covering uninsured patients, it still costs someone, especially the state an ever-increasing amount of money.

Recently, there have been disturbing reports that health care costs are playing a role in bankrupting companies and laying off workers and health care costs were cited as an important factor in this decision. Currently, GM pays more for health care than they do for steel. Starbucks Coffee recently reported that it pays more for health care than for coffee.

Hawaii is in a position to be a leader in reversing this trend. While we all look for ways to improve the funding of our health care system, what we really need is and improvement in our health. With the example of the Hawaii Diet program and our integrative medicine department at the John A. Burns School of Medicine, we are in a position to create a program that can demonstrate the reversal of illness and a reduction in health care costs.

For example, one patient was on more than 12 medications for problems related to obesity. After being placed on the lifestyle program, his requirement for medication was reduced to 3 medications at a savings of approximately \$1,000 per month in medications. Considering that this is a recurring savings, month after month, year after year, it highlights the problem we have with our health care system's reliance on medication and how much the potential savings can be. Another patient was about to be placed on dialysis. As a result of our approach, he improved so much that dialysis was unnecessary for five years when he died of other causes. This is a savings of \$70,000 per year or \$350,000 over five years on this one patient.

- ii. **IMPROVE HEALTH REACH THROUGH INTERNET PRESENCE:** More important than reducing the cost of health care is improving the health of the people. Obesity related disease and nutrition related diseases are the leading causes of death in the U.S. In Hawaii, this problem is magnified in the Native Hawaiian population. This program would serve the people of Hawaii and

be a model program that could be implemented around the islands and throughout the world.

- iii. POSITION HAWAII AS A WORLD CENTER FOR HEALTH: Of strategic importance to Hawaii is establishing its position as a world center for health. Health is not only an important factor in tourism, it is also an industry in its own right which makes the most of Hawaii's unique location and cultural healing practices.
- iv. CREATE A WORLD-CLASS INTEGRATIVE MEDICINE CENTER THAT INCLUDES A NATIVE HAWAIIAN HEALING CENTER: National research has indicated that people now visit integrative health practitioners more frequently than they do to conventional health practitioners. Creating a world class integrative medicine center in collaboration with the medical school will enhance the position of Hawaii as a leader in this fast-growing field.

2. TARGET POPULATION SERVED

- i. The primary target population will be high risk adults with an emphasis on obesity and nutrition related diseases.
- ii. The secondary target population will be all patients covered by insurance who may benefit by a reduction in premiums.

3. GEOGRAPHIC COVERAGE

- i. The primary geographic target population to be served will be Honolulu, and Leeward Oahu
- ii. A secondary geographic target population is the whole state, especially any community where a health program may be conducted, and through electronic means including the internet and e-teleconferences.

II. SERVICE SUMMARY AND OUTCOME

1. Scope of work, tasks and responsibilities

- i. For the health cost reduction program the scope of work will include conducting health cost reduction integrative health programs and tracking them over time. Tasks will include
 - a. Setting up programs and lectures
 - b. Promoting and recruiting
 - c. Conducting programs and public lectures
 - d. Compiling data
- ii. For the integrative medicine program, the scope of work includes setting up lecture series for the public and professionals. Obtaining CME approval if necessary. Advertising and promoting

lectures. Conducting lectures, obtaining recordings, and posting them where they may be accessed for fee or free.

- a. Set up lecture series
 - b. Advertise program and wellness center
 - c. Record lecture series
 - d. Post on web
 - e. Promote and advertise
- iii. For the integrative medicine center, the scope of work includes acquiring the site, planning and developing the land and buildings for the integrative medicine center.
- a. Planning
 - b. Site investigation
 - c. Negotiation of Lease for the nonprofit entity(s)
 - d. Formation of development team
 - e. Initial construction drawings
 - f. Planning for funding sources

2. Timeline (see attached)

3. Quality Assurance and Evaluation

- i. For the demonstration project, data is collected in a manner that may be published and reviewed by peers and the general public.
 - a. Anthropometric data will be collected including
 - i. Weight
 - ii. Blood Pressure
 - b. Blood results will be collected including
 - i. Cholesterol
 - ii. Triglycerides
 - iii. Blood Sugar
 - iv. Hgb a1c (in some cases)
 - v. LDL
 - c. Requirement for medication and dialysis will be monitored for
 - i. Dosage
 - ii. Cost
 - d. Health Cost
- ii. For the Promotion of the Integrative Program, the measure of success will be
 - a. Promotion of the practice
 - i. Planning and implementation of promotional strategy
 - ii. Conduct of the teleseminar series
 - iii. Website development
 - iv. Recordings of practitioners including Native Hawaiian healers
 - v. Revenue
 - b. Promotion of Integrative Medicine Education Program
- iii. For the Design and Construction of the Integrative Center, the measure of success will be reaching milestones that will satisfy the ultimate financiers of the project.
 - a. Planning
 - b. Site investigation
 - c. Negotiation of Lease for the nonprofit entity(s)

- d. Formation of development team
 - e. Initial construction drawings
 - f. Planning for funding sources
4. Measures of Effectiveness
- ii. For the demonstration project, measures of effectiveness would include
 - a. Anthropometric data
 - i. Weight: Sustained reduction of weight of 5% or 1 unit of BMI
 - ii. Blood Pressure: number of individuals in normal range at or below 140.90
 - b. Blood results will be collected including
 - i. Cholesterol: 5% reduction
 - ii. Triglycerides: number of individuals below 150 mg/dl
 - iii. Blood Sugar: number in normal range
 - iv. Hgb a1c:, where applicable, number at 7% or below
 - v. LDL: 5% reduction
 - c. Requirement for medication and dialysis will be monitored for
 - i. Dosage: Any sustained reduction
 - ii. Cost: 10% reduction in cost of medication
 - ii. For the Promotion of the Integrative Program, the measure of success will be
 - a. Promotion of the practice
 - i. Planning and implementation of promotional strategy: number of ads and exposures
 - ii. Conduct of the teleseminar series: number of recorded teleseminars and lectures
 - iii. Website development: website content ie number of recordings posted
 - iv. Recordings of practitioners including Native Hawaiian healers: Number of lectures and attendees
 - v. Revenue
 - b. Promotion of Integrative Medicine Education Program
 - iii. For the Design and Construction of the Integrative Center, the measure of success will be reaching milestones that will satisfy the ultimate financiers of the project.
 - a. Planning
 - b. Site investigation and purchase
 - c. Negotiation of Lease for the nonprofit entity(s)
 - d. Formation of development team
 - e. Initial construction drawings: completion and approval of drawings
 - f. Planning for funding sources: securing of add'l funds

III. Financial

Budget

- 1. (see budget sheets)
- 2. Quarterly funding requirements

Quarter 1	Quarter 2	Quarter 3	Quarter 4	Total Costs
99,766	124708	137178	137178	498,832

IV. Experience and Capability

A. Necessary Skills and Experience

1. The Hawaii Health Foundation has been conducting health programs since 1996. Some of the programs conducted include the Hawaii Diet Program with the community of Papakolea, Kamehameha Schools, and Halawa Housing.
2. Results of the Hawaii Diet Program has been published in the Hawaii Medical Journal, and featured on Dateline NBC.
3. Dr. Shintani is Associate Chair of Complementary and Alternative Medicine at the John A Burns School of Medicine.
4. Dr. Shintani recently convinced World reknown professors, Dr. Jerry Jampolsky and Dr. Diane Cirincione, the founders of the Centers of Attitudinal Healing to join our faculty and make their academic base the University of Hawaii. They are now an integral part of this project.
5. Kathy Kuniyoshi, RN, recipient of a Hawaii Senate Commendation last year for her work in reversing health problems will be part of the staff if funded.
6. We are currently conducting follow up on a program in Waimea, Hawaii with Five Mountains Hawaii to demonstrate a reversal of obesity and obesity related conditions, and planning to conduct programs on Maui and in Waimanalo.
7. We currently have a site for an integrative Medicine center affiliated with the Medical School.
8. Three of our Board members and the president of the Hawaii Health Foundation were formally designated as "Living Treasures of Hawaii". The president won the "Integrative Medicine Award" from the Hawaii Wellness Institute and is now on the National Advisory Board of the American College of Lifestyle Medicine - demonstrating his capabilities in the leadership of this effort.

B. Facilities

Currently, a 1390 sf office is leased in Honolulu for is base of operations. Most of the interventions are off site and in collaboration with other organizations so for current activities this is adequate. For clinical services, a Kakaako site in conjunction with the MOA Wellness Center is being leased by University Integrative Medicine, the practice arm of the Complementary and Alternative Medicine Dept of the John A. Burns School of Medicine. The Clinical site is ADA compliant. A companion CIP grant describes our plans to obtain permanent facilities.

V. Personnel: Project Organization and Staffing

A. Proposed Staffing, Staff Qualifications, Supervision and Training

President, Terry Shintani, MD, JD, MPH
20 years of experience in community health, health promotion, and currently
associate Chair of the Dept of Complementary and Alternative Medicine at
JABSOM.

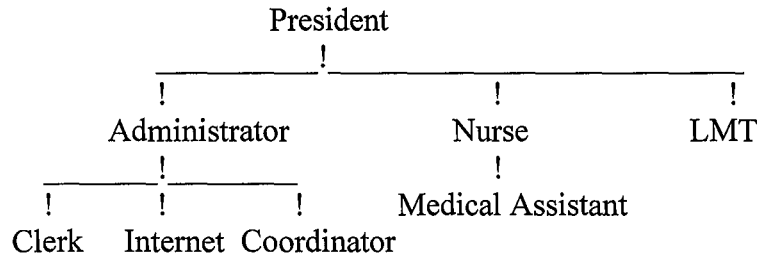
Administrator, Diane Nomura DPM
17 years experience running the Hawaii Health Foundation and organizing
hundreds of health seminars and programs.

Program Coordinator, Craig Tam, Multi-industry experience in promoting health
and wellness programs.

Clerical Staff

Medical Assistant

B. Organization Chart



VI. Other

A. Litigation

The applicant shall disclose any pending litigation to which they are a party,
including the disclosure of any outstanding judgement. If applicable, please
explain.

None

B. Licensure or Accreditation

Specify any special qualifications, including but not limited to licensure or accreditation that applicant possesses relevant to this request.

Dr. Shintani is a licensed physician in Hawaii, a Professor of Medicine and Associate Chair of the Dept of Complementary and Alternative Medicine at the John A. Burns School of Medicine and a Member of the National Advisory Board of the American College of Lifestyle Medicine. He is formally designated a "Living Treasure of Hawaii."

Dr. Diane Nomura is a licensed Podiatrist in the State of Hawaii. 17 years as Administrator of the Hawaii Health Foundation

Dr. Rosanne Harrigan is a licensed Nurse Practitioner (APRN Rx) and Education specialist and former Dean of the School of Nursing

**DECLARATION STATEMENT OF
APPLICANTS FOR GRANTS AND SUBSIDIES PURSUANT TO
CHAPTER 42F, HAWAII REVISED STATUTES**

The undersigned authorized representative of the applicant certifies the following:

- 1) The applicant meets and will comply with all of the following standards for the award of grants and subsidies pursuant to Section 42F-103, Hawaii Revised Statutes:
 - a) Is licensed or accredited, in accordance with federal, state, or county statutes, rules, or ordinances, to conduct the activities or provide the services for which a grant or subsidy is awarded;
 - b) Complies with all applicable federal and state laws prohibiting discrimination against any person on the basis of race, color, national origin, religion, creed, sex, age, sexual orientation, or disability;
 - c) Agrees not to use state funds for entertainment or lobbying activities; and
 - d) Allows the state agency to which funds for the grant or subsidy were appropriated for expenditure, legislative committees and their staff, and the auditor full access to their records, reports, files, and other related documents and information for purposes of monitoring, measuring the effectiveness, and ensuring the proper expenditure of the grant or subsidy.
- 2) The applicant meets the following requirements pursuant to Section 42F-103, Hawaii Revised Statutes:
 - a) Is incorporated under the laws of the State; and
 - b) Has bylaws or policies that describe the manner in which the activities or services for which a grant or subsidy is awarded shall be conducted or provided.
- 3) If the applicant is a non-profit organization, it meets the following requirements pursuant to Section 42F-103, Hawaii Revised Statutes:
 - a) Is determined and designated to be a non-profit organization by the Internal Revenue Service; and
 - b) Has a governing board whose members have no material conflict of interest and serve without compensation.

Pursuant to Section 42F-103, Hawaii Revised Statutes, for grants or subsidies used for the acquisition of land, when the organization discontinues the activities or services on the land acquired for which the grant or subsidy was awarded and disposes of the land in fee simple or by lease, the organization shall negotiate with the expending agency for a lump sum or installment repayment to the State of the amount of the grant or subsidy used for the acquisition of the land.

Further, the undersigned authorized representative certifies that this statement is true and correct to the best of the applicant's knowledge.

Hawaii Health Foundation, dba for Hawaii Institute of Integrative Health

(Typed Name of Individual or Organization)

Jan 30, 2014

(Date)

President

(Typed Name)

(Title)

BUDGET REQUEST BY SOURCE OF FUNDS

(Period July 1, 2014 June 30, 2015)

Applicant HAWAII HEALTH FOUNDATION

BUDGET CATEGORIES	Total State Funds Requested (a)	Revenue Contributions (b)	Contracts (c)	(d)
A. Personnel Costs				
1. Salaries	\$284,000	\$295,000	\$42,000	
2. Payroll Taxes and Assessments	\$35,642	\$38,968	\$5,460	
3. Fringe Benefits	\$17,040	\$18,630	\$2,520	
TOTAL PERSONNEL COSTS	\$336,682	\$257,668	\$49,980	
B. OTHER CURRENT EXPENSES				
1. Airfare, Inter Island	\$1,750	\$1,225		
2. Insurance	\$250	\$175		
3. Lease Rental of Equipment	\$500	\$350		
4. Lease/Rental of Space	\$12,000	\$19,250		
5. Staff Training	\$500	\$350		
6. Supplies	\$750	\$525		
7. Telecommunications	\$1,200	\$840		
8. Utilities	\$700	\$490		
9. Maintenance/Cleaning	\$1,250	\$875		
10. postage	\$250	\$175		
11. Professional Services	\$2,000	\$1,400		
12. Internet web design & maint	\$35,000	\$35,000		
13. Public Relations/Marketing	\$50,000	\$15,000		
14. Health Services	\$5,000	\$1,000		
15. Medical Supplies	\$1,500	\$300		
16. Lab Tests	\$12,500	\$2,500		
17. Consultants/Teachers/Medical	\$10,000	\$2,000		
18. Research Materials/Provisions	\$12,500	\$2,500		
19. Travel	\$3,500	\$700		
20. Space Rental	\$6,000	\$1,200		
Total Other Current Expenses				
C. EQUIPMENT PURCHASES	\$5,000	\$15,000		
D. MOTOR VEHICLE PURCHASES				
E. CAPITAL				
TOTAL (A+B+C+D+E)	\$498,832	\$358,523	\$49,980	
SOURCES OF FUNDING		Budget Prepared by		
(a) Total State Funds Requested	\$498,832	Terry Shintani, MD 628-8784		
(b)	\$358,523	Name: [REDACTED]		
(c)	\$49,980	Signature of Authorized Official: [REDACTED]		
(d)		Date: 1/30/2014		
TOTAL REVENUE	\$907,335	Name and Title Terry Shintani, MD, President		

BUDGET JUSTIFICATION - EQUIPMENT AND MOTOR VEHICLES

Applicant: Hawaii Health Foundation _____

Period: July 1, 2014 to June 30, 2015

DESCRIPTION EQUIPMENT	NO. OF ITEMS	COST PER ITEM	TOTAL COST	TOTAL BUDGETED
Computer	2.00	\$1,250.00	\$ 2,500.00	
Printer	2	\$250.00	\$ 500.00	
software	2	\$1,000.00	\$ 2,000.00	
			\$ -	
			\$ -	
TOTAL:	6		\$ 5,000.00	5,000

JUSTIFICATION/COMMENTS:

DESCRIPTION OF MOTOR VEHICLE	NO. OF VEHICLES	COST PER VEHICLE	TOTAL COST	TOTAL BUDGETED
			\$ -	
			\$ -	
			\$ -	
			\$ -	
			\$ -	
TOTAL:				

JUSTIFICATION/COMMENTS:

BUDGET REQUEST BY SOURCE OF FUNDS

(Period July 1, 2014 to June 30, 2015)

Applicant_ Hawaii Health Foundation

POSITION TITLE	FULL TIME EQUIVALENT	ANNUAL SALARY	% OF TIME BUDGETED TO REQUEST	TOTAL SALARY BUDGETED IN REQUEST
		A	B	AxB
President/Medical Director	0.6	\$225,000	0.4	\$90,000
Administrator	1	\$90,000	0.5	\$45,000
Assistant	1	\$50,000	1	\$50,000
Education/Nurse Practitioner Dr. Harrigan	0.1	\$150,000	0.1	\$15,000
Internet/Data Specialist	0.1	\$80,000	0.1	\$8,000
Registered Nurse	0.1	\$70,000	0.6	\$42,000
Medical Assistant	0.5	\$40,000	0.5	\$20,000
Massage Therapist/ Coordinator	0.1	\$50,000	0.1	\$5,000
Recep/Clerical	0.25	\$36,000	0.25	\$9,000
TOTAL:	3.75	\$791,000	1.9	\$284,000

JUSTIFICATIONS/COMMENTS: Dr. Shintani, MD, JD, MPH is the Award- Winning Med Director, and Assoc Chair CAM dept UH Med Schl
 Dr. Harrigan (EdD, and APRN is the former Dean of the School of Nursing and Chair of the Dept of CAM at JABSOM (UH Med School)

BUDGET JUSTIFICATION CAPITAL PROJECT DETAILS

Applicant: _____

Period: July 1, 2014 to June 30, 2015

FUNDING AMOUNT REQUESTED						
TOTAL PROJECT COST	ALL SOURCES OF FUNDS RECEIVED IN PRIOR YEARS		STATE FUNDS REQUESTED	OF FUNDS	FUNDING REQUIRED IN SUCCEEDING YEARS	
	FY: 2012-2013	FY: 2013-2014	FY:2014-2015	FY:2014-2015	FY:2015-2016	FY:2016-2017
PLANS						
LAND ACQUISITION						
DESIGN						
CONSTRUCTION						
EQUIPMENT						
TOTAL:						
JUSTIFICATION/COMMENTS:						

		GIA Timeline 2014																										
		THE HAWAII HEALTH FOUNDATION INTEGRATIVE MEDICINE PROJECT																										
		2014					2015					2016				2017				2018								
		Aug	Sep	Oct	Nov	Dec	Jan	Feb	Mar	Apr	May	Jun	Jul	Aug	Sep	Oct	Nov	Dec	Jan	Feb	Mar	Apr	May	Jun	Jul			
HAWAII HEALTH PROJECT Administration																												
Setup																												
Grant Award		x																										
Negotiate Contract			x																									
Organization			x	x																								
Staffing				x	x																							
Planning			x	x	x	x	x																					
Coordinating, Supporting, Implementation			x	x	x	x	x	x	x	x	x	x	x	x	x	x	x	x	x	x	x	x	x	x				
I. INTEGRATIVE MEDICINE COMMUNITY HEALTH PROJECT																												
Cost Reduction Project																												
Prepare Protocols																												
IRB																												
Organizational Meeting																												
Prepare Materials for Solicitation																												
Public Solicitation of Participants																												
Screen Participants																												
Intake Participants																												
Conduct Program																												
Compile date for community and Medicare																												
Pursue Medicare Approval					x	x	x	x	x	x	x	x	x	x	x	x	x	x	x	x	x	x	x					
II. HAWAII LIFESTYLE PROGRAM																												
Community model																												
Community Presentations																												
Seminars/Programs					x	x	x	x	x	x	x	x	*	x	*	*	x	x	*	*	*	*	*					
III. HEALTH PROMOTION/MARKETING																												
Develop Marketing Plans & Seek Funds																												
Develop and support electronic media and Teleseminar Resor																												
IV. INTEGRATIVE MEDICINE PRACTICE																												
Promote JABSOM Practice																												
Lecture Series	*																											
CME setup		*	*	*	*																							
Marketing				*	*	*	*	*	*	*	*	*	*	*	*	*	*	*	*	*	*	*	*					
Practice		*	*	*	*	*	*	*	*	*	*	*	*	*	*	*	*	*	*	*	*	*	*					
VI INTEGRATIVE MEDICINE FACILITY																												
Planning		x	x																									
Site Investigation			x	x	x																							
Team Building			x	x	x																							
Preliminary design				x	x	x	x	x																				
Seek add'l Funding				x	x	x	x	x																				
Drawings						x	x	x	x																			
Bid									x	x	x																	

**DECLARATION STATEMENT OF
APPLICANTS FOR GRANTS AND SUBSIDIES PURSUANT TO
CHAPTER 42F, HAWAI'I REVISED STATUTES**

The undersigned authorized representative of the applicant certifies the following:

- 1) The applicant meets and will comply with all of the following standards for the award of grants and subsidies pursuant to Section 42F-103, Hawai'i Revised Statutes:
 - a) Is licensed or accredited, in accordance with federal, state, or county statutes, rules, or ordinances, to conduct the activities or provide the services for which a grant or subsidy is awarded;
 - b) Complies with all applicable federal and state laws prohibiting discrimination against any person on the basis of race, color, national origin, religion, creed, sex, age, sexual orientation, or disability;
 - c) Agrees not to use state funds for entertainment or lobbying activities; and
 - d) Allows the state agency to which funds for the grant or subsidy were appropriated for expenditure, legislative committees and their staff, and the auditor full access to their records, reports, files, and other related documents and information for purposes of monitoring, measuring the effectiveness, and ensuring the proper expenditure of the grant or subsidy.
- 2) The applicant meets the following requirements pursuant to Section 42F-103, Hawai'i Revised Statutes:
 - a) Is incorporated under the laws of the State; and
 - b) Has bylaws or policies that describe the manner in which the activities or services for which a grant or subsidy is awarded shall be conducted or provided.
- 3) If the applicant is a non-profit organization, it meets the following requirements pursuant to Section 42F-103, Hawai'i Revised Statutes:
 - a) Is determined and designated to be a non-profit organization by the Internal Revenue Service; and
 - b) Has a governing board whose members have no material conflict of interest and serve without compensation.

Pursuant to Section 42F-103, Hawai'i Revised Statutes, for grants or subsidies used for the acquisition of land, when the organization discontinues the activities or services on the land acquired for which the grant or subsidy was awarded and disposes of the land in fee simple or by lease, the organization shall negotiate with the expending agency for a lump sum or installment repayment to the State of the amount of the grant or subsidy used for the acquisition of the land.

Further, the undersigned authorized representative certifies that this statement is true and correct to the best of the applicant's knowledge.

Hawaii Health Foundation, dba for Hawaii Institute of Integrative Health

	Jan 30, 2014
(Signature) Terry Shintani, MD, JD, MPH,	(Date) President
(Typed Name)	(Title)