

House District All  
Senate District All

THE TWENTY-SEVENTH LEGISLATURE  
HAWAII STATE LEGISLATURE  
APPLICATION FOR GRANTS & SUBSIDIES  
CHAPTER 42F, HAWAII REVISED STATUTES

Log No:

For Legislature's Use Only

Type of Grant or Subsidy Request:

GRANT REQUEST – OPERATING

GRANT REQUEST – CAPITAL

SUBSIDY REQUEST

"Grant" means an award of state funds by the legislature, by an appropriation to a specified recipient, to support the activities of the recipient and permit the community to benefit from those activities.

"Subsidy" means an award of state funds by the legislature, by an appropriation to a recipient specified in the appropriation, to reduce the costs incurred by the organization or individual in providing a service available to some or all members of the public.

"Recipient" means any organization or person receiving a grant or subsidy.

STATE DEPARTMENT OR AGENCY RELATED TO THIS REQUEST (LEAVE BLANK IF UNKNOWN):

STATE OF HAWAII, DEPARTMENT OF AGRICULTURE

STATE PROGRAM I.D. NO. (LEAVE BLANK IF UNKNOWN): \_\_\_\_\_

1. APPLICANT INFORMATION:

Legal Name of Requesting Organization or Individual:  
Hawaii Agricultural Foundation  
Dbas:

Street Address: 667 Paikau Street, Honolulu, HI 96816

Mailing Address: P.O. Box 236010, Honolulu, HI 96823

2. CONTACT PERSON FOR MATTERS INVOLVING THIS APPLICATION:

Name DENISE HAYASHI YAMAGUCHI

Title: Executive Director

Phone # 808-386-2538

Fax # 808-595-6788

e-mail denisehayashi@hawaii.rr.com

3. TYPE OF BUSINESS ENTITY:

- NON PROFIT CORPORATION  
 FOR PROFIT CORPORATION  
 LIMITED LIABILITY COMPANY  
 SOLE PROPRIETORSHIP/INDIVIDUAL

6. DESCRIPTIVE TITLE OF APPLICANT'S REQUEST:

HAWAII AGRICULTURAL FOUNDATION (HAF) AG EDUCATIONAL PROGRAMS:  
BUILDING A CONTINUUM FROM K-12

4. FEDERAL TAX ID #: \_\_\_\_\_

5. STATE TAX ID #: \_\_\_\_\_

7. AMOUNT OF STATE FUNDS REQUESTED:

FY 2013-2014: \$ 446,339

8. STATUS OF SERVICE DESCRIBED IN THIS REQUEST:

- NEW SERVICE (PRESENTLY DOES NOT EXIST)  
 EXISTING SERVICE (PRESENTLY IN OPERATION)

SPECIFY THE AMOUNT BY SOURCES OF FUNDS AVAILABLE AT THE TIME OF THIS REQUEST:

STATE \$ \_\_\_\_\_

FEDERAL \$ \_\_\_\_\_

COUNTY \$ \_\_\_\_\_

PRIVATE/OTHER \$ \_\_\_\_\_

TYPE NAME & TITLE OF AUTHORIZED REPRESENTATIVE:

DENISE HAYASHI YAMAGUCHI  
NAME & TITLE

1/31/2014  
DATE SIGNED

## Application for Grants and Subsidies

*If any item is not applicable to the request, the applicant should enter "not applicable".*

### I. Background and Summary

This section shall clearly and concisely summarize and highlight the contents of the request in such a way as to provide the State Legislature with a broad understanding of the request. Include the following:

1. A BRIEF description of the applicant's background;

The Hawaii Agricultural Foundation (HAF) is a non-profit charitable organization created to promote agriculture and farming. Created in 2007 (initially as *The Hawaii Farm Bureau Foundation for Agriculture*, and renamed *The Hawaii Agricultural Foundation* in 2010), the mission of HAF is to support and sustain Hawaii's agricultural industry by addressing critical needs and services of farmers and the agricultural industry in Hawaii, and by better connecting the farmers with the community and vice-versa. This involves educational and outreach programs in the community, as well as direct marketing, technical, educational and in-the-field support for farmers.

2. The goals and objectives related to the request;

The goal of the HAF's Ag Education Program: Building a Continuum from K-12 is support local agricultural as a strategic public investment to build community resilience and strengthen the productive economic base. The program aims to ensure that we foster and maintain a strong workforce needed to grow and sustain Hawaii's agricultural industry.

The Ag Education Program: Building a Continuum from K-12 will: (1) create greater student awareness and interest in agriculture and improve the perception of Hawaii's third largest industry and its impact on the island economy; (2) build a continuum from elementary to secondary schools for students to be exposed to agricultural careers; (3) build capacity and leadership in natural resource teachers and students through Future Farmers of America (FFA) activities at the state and national levels; (4) develop more effective partnerships between industry and academia through supervised agricultural experiences (SAE) to recruit more students and better prepare them with the skills they need for college and career-readiness in agricultural education; (5) better align the needs of education and agriculture and create programs that help facilitate the transition for students from school to work.

3. State the public purpose and need to be served;

The HAF supports the Administration's Guiding Principles: Food and Agriculture

- Food security as the primary goal
- Entrepreneurial farming and jobs
- Preserving and advancing rural communities
- Sustaining natural resources
- Agricultural innovation
- Dialogue, planning and shared commitment

\*Note: From 2010 Abercrombie for Governor "Food and Agriculture – An Agricultural Renaissance in Hawaii."

As the State's third largest industry, agriculture continues to be an important part of Hawaii's history and economy, generating \$2.9 billion to the state's annual economy and directly and indirectly providing 42,000 jobs.

While production from plantation crops has declined, diversified agriculture production has had tremendous growth over the last 10 years. Small farms growing diversified agricultural products such as specialty exotic fruits, coffee, macadamia nuts, flowers, vegetables, are not only being cultivated for Hawaii's markets, but also for major exports to destinations around the world. In addition, new value-added consumer product industries have also emerged, fueled by the culinary arts, biotechnology, plant science, aquaculture, forestry, ornamental horticulture, and other agriculture-related fields.

With the growth in diversified agriculture, the diversity and demand for jobs in farming, forestry, ranching and fishing has also risen. Today, Hawaii can account for 7,500 farms and ranches and in order to prosper, agricultural producers must have qualified graduates with varying degrees of education to succeed.

It is apparent that Hawaii needs a larger and more skilled workforce for its agricultural industry, but meeting this need is complicated by the diversity of skills needed and jobs available. Currently, agriculture and agricultural science courses are offered in some of Hawaii's schools and there have been activities that have been successful in creating greater interest. However, the "journey" from elementary to post-secondary school to work is often weak and disjointed. The goal of HAF program is to build upon the schools' existing programs and to bridge the gaps between academia and industry.

4. Describe the target population to be served;

The target populations to be served are K-12 public school students.

5. Describe the geographic coverage.

State of Hawaii

6. Describe how the request will, in the case of a grant, permit the community to benefit from those activities; or for a subsidy, reduce the costs incurred by the organization or individual in providing a service available to some or all members of the public.

The grant will provide the needed funds to create the HAF Educational Programs for public school students to ensure that we have strong workforce pipeline to support the growth and sustainability of Hawaii's agricultural and farming industry.

In a 2007 Strategic Plan for Transforming Agriculture and Natural Resources Education in Hawaii document created by an advisory board consisting of representatives from the private sector, the UH- Manoa, UH-Hilo, UH community Colleges, the Hawaii Department of Agriculture, Labor and Education, the following four key areas were cited as needs for ensuring a strong workforce in agriculture:

- Create greater awareness and interest in agriculture career fields and improve public perception and support
- Develop more effective partnerships between industry and academia – utilize partnerships to recruit more students into these careers and better prepare them for these careers
- Improve the preparedness of students in agriculture
- Develop articulated academic programs for students interested in agriculture careers

To address those stated needs, HAF is proposing to develop the following programs:

**Ag in the Classroom –Veggie U**

For the last six years, the Maui County Farm Bureau has implemented a program for second graders which has reached more than 2,000 second grade students. The 10-month series of in-class farmer presentations and on-the-farm field activities, titled Where Would We Be Without Seeds, was centered around the life cycle of plants.

Building on this program, HAF has developed a partnership with Veggie U. Developed in Ohio, Veggie U is a comprehensive 25-lesson curriculum that combines science, health, language arts and math into an engaging educational experience for students. Using a garden kit (provided to each class) complete with seeds, soil, flats, root view boxes, grow lights and a worm farm, students will engage in hands-on studies emphasizing the process from seed-to-harvest, while incorporating multiple subject area disciplines. Students will make connections between agriculture, science, math, health and technology thus fostering a lifelong

understanding and appreciation of locally-grown produce. The goal is to excite and interest students in pursuing an agriculture-related career – preserving Hawaii's future agricultural industry. The program introduces students to the vital role of agriculture plays in our daily lives.

The HAF is currently field-testing the Veggie U kits with seven teachers in four public elementary schools. The seven teachers will implement Veggie U in the classroom and provide feedback to the Department of Education (DOE) over the semester. In the Fall 2014, HAF, in partnership with DOE will launch the first round of Veggie U kits in 50 classrooms statewide. State funding will be used to pay for kits, transportation, substitutes, training and materials.

### **Leadership Training for Natural Resource Teachers and Students**

Working with the DOE, HAF will work to build leadership and capacity in natural resource teachers and students throughout the state through Future Farmers of America (FFA) activities and training. This will include subsidies for professional development training of 32 teachers and funding for the FFA State convention, as well as travel to the FFA national convention.

### **In the Field - Ag Industry Partnership and Internships**

The HAF will create two initiatives to provide middle and high school students with supervised agricultural experiences (SAE) - first-hand knowledge of the world of work "in the field." HAF will work with industry to develop a partnership program that will introduce students interested in the agriculture to different industries and businesses. Through this initiative students will be paired with a workplace where they will experience first-hand the inner workings of an agricultural related business. This will include conventional farms, bio-tech facilities, aquaponics and aquaculture farms, ranches, fish auction facility, etc. Through a guided trip, students will have the opportunity to be in the real world environment.

The HAF will also create an Ag Internship Program for high school and college level students to intern at one of many Hawaii agricultural related businesses. Many organizations see the importance in having an established internship program, but do not know have the capacity to get the program started. The internship programs can be a significant way to attract new talent and gain valuable assistance from the intern while intern gains from real-life work experience that could help find a job and jump start their careers.

### **Emerging Innovative Agricultural Production: Aquaponics**

The HAF will support teachers and students through school-based training to become certified as Aquaponic Technicians using industry-based practices in start-up, monitoring and maintenance of Aquaponic systems and their products. This project will enable schools to connect industry expectations and standards in agricultural education to science, math, technology and engineering (problem-solving and critical thinking) and help build a trained entry-level workforce.

Students will also be able to project professional and post secondary educational learning goals to advance and prepare for higher level occupations and careers in Ag. Hawaii's Department of Agriculture is promoting Aquaponic commercial products such as organic produce and tilapia to Hawaii markets (Honolulu Star Advertiser, *Aquaponics Promoted as a Fertile Enterprise*. January 27, 2014). Although still a fledgling enterprise, Aquaponics holds promise as a large-scale production industry with export potential, adding to the states economy. Inherent aspects of Aquaponic production also supports sustainability and food security objectives of Ag.

Related Aquaponic skills and knowledge, including workplace standards of employability, and the use of technologies and industry-grade methods are transferable to other emerging and innovative technologies in agricultural production such as hydroponics, aeroponics, and controlled environment agriculture.

## II. Service Summary and Outcomes

The Service Summary shall include a detailed discussion of the applicant’s approach to the request. The applicant shall clearly and concisely specify the results, outcomes, and measures of effectiveness from this request.

1. Describe the scope of work, tasks and responsibilities;

In cooperation with the DOE, HAF will develop Ag in the Classroom, Leadership Training of Natural Resource Teachers and Students and In the Field programs:

### Ag in the Classroom – Veggie U

<b>Tasks</b>	<b>Responsibilities</b>
Veggie U kit and prep	HAF
School/Classroom interest (4 <sup>th</sup> grade)	DOE
Training (3)	HAF/DOE
Implementation	DOE Teachers
Follow-up with Teachers	HAF
Evaluation	HAF/DOE
Standards alignment of kits for 2 <sup>nd</sup> and 3 <sup>rd</sup> grade	HAF

### Leadership Training for Natural Resource Teachers and Students

<b>Tasks</b>	<b>Responsibilities</b>
Compendium / inventory of all FFA Charters	HAF/DOE
Compendium of all teachers with CTE natural resource courses, inclusive of subject area certification/license	HAF/DOE
Update of school charters and charter policies	HAF
Assist with collection, analysis of CTE natural resource	HAF/DOE

- program data and evaluation reports
- Assist with State CTE Student Organization Convention HAF/DOE  
Coordination for FFA
- Support professional development of classroom HAF/DOE  
activities that prepare students for State CTSO  
Convention and Career Development Events (CDEs)  
for FFA
- Provide travel subsidies and/or scholarships for students to HAF  
attend FFA state convention
- Provide travel subsidies and/or scholarships for students to HAF  
Attend FFA national convention

**In the Field - Ag Industry Partnership and Internships**

<b>Tasks</b>	<b>Responsibilities</b>
Identify businesses interested in providing first-hand career experiences for students	HAF
Identify schools interested that have students interested in Ag-related careers	DOE
Provide transportation to work site	HAF
Provide funds to cover substitutes for teachers (teachers Will assess ag business and align tasks and duties to natural resource education and business / industry standards)	HAF
Provide stipends to students	HAF

<b>Tasks</b>	<b>Responsibilities</b>
Training and certification alignment, development	HAF, DOE, Industry
Aquaponic Mini Systems purchase	HAF
Provide stipends for industry tech support	HAF

2. The applicant shall provide a projected annual timeline for accomplishing the results or outcomes of the service;

The projected timeline for accomplishing the results and outcome is two years.

3. The applicant shall describe its quality assurance and evaluation plans for the request. Specify how the applicant plans to monitor, evaluate, and improve their results; and

1. Increase awareness about agricultural careers by introducing K-12 students to the vital role of agriculture plays in our daily lives.

a. Monitor and Evaluate--We will track the number of schools/classrooms and students and provide evaluation surveys to teachers.

- b. Improve Results--We will constantly look for new opportunities to improve the program through student and teacher feedback. We will also update our presentation as new data and information becomes available.
  2. Build leadership and capacity in natural resource teachers and students through FFA state and national activities
    - a. Monitor and Evaluate--We will track the number of teachers participate in professional development. We will provide an evaluation survey to teachers to determine if they gained knowledge to better prepare their students for FFA activities
    - b. Monitor and Evaluate—We will track the number of travel subsidies provided to both state and national convention. We will collect evaluation surveys from students on their experiences
  3. Develop more effective partnerships between industry and academia – utilize partnerships to recruit more students into these careers and better prepare them for these careers
    - a. Monitor and Evaluate--We will track the number of partnerships created and will track the number of long-term relationships developed.
    - b. Improve Results--We constantly look for feedback from industry partners to help schools improve their knowledge base and curriculum.
- Increase the preparedness of students for the agricultural workforce through the development of an agricultural industry internship program.
- a. Monitor and Evaluate--We track the number of internships created between industry and high school and community colleges.
    - b. Improve Results--We will work increase the number of internship programs and improve the preparedness of students entering the workforce.
  4. Increase the capacity of teachers to become certified Aquaponic Technicians so they may better prepare students for careers in aquaponics.
    - a. Monitor and Evaluate – We will track the number of teachers and students that become certified aquaponic technicians.
    - b. Improve Results—We will evaluate teacher progress and improve the program with input from industry.
4. The applicant shall list the measure(s) of effectiveness that will be reported to the State agency through which grant funds are appropriated (the expending agency). The measure(s) will provide a standard and objective way for the State to assess the program’s achievement or accomplishment. Please note that if the level of appropriation differs from the amount included in this application that the



measure(s) of effectiveness will need to be updated and transmitted to the expending agency.

1. Increase awareness about agricultural careers by introducing elementary students to the vital role of agriculture plays in our daily lives by reaching a minimum of 50 classrooms and 1,000 students statewide in FY2015 and FY 2016. We will work in partnership with the Hawaii Island Farm Bureau and Kauai County Farm Bureau to develop their programs.
2. Build leadership and capacity in natural resource teachers and students. We will reach a minimum of 32 teachers and 32 schools.
3. Increase the number of industry partnership programs with schools. We plan to coordinate a minimum of 15 formal partnerships in place by FY2015 and increase that number to 20 formal partnerships by FY2016. This will include partnerships through both "In the Field" Industry Partnership Program and Internship programs.
4. The Aquaponics program will be developed in coordination with the Department of Education (HiDOE) and an Aquaponics industry partner. Collaboration between the industry partner, HiDOE and a certifying agency to design competency-based requirements for the Aquaponics Technician certification will be facilitated. There are currently 12 to 15 secondary schools with Ag education programs and teachers able to implement and support an Aquaponic Technician certification program.

In the first year, HAF will also support assistance to schools needing tech support from industry professionals, with a minimum of two on-site visits per school.

It should be noted that HAF will sustain these program in future years through funding from private grants, corporate sponsors and through individual contributions.

### **III. Financial**

#### **Budget**

1. The applicant shall submit a budget utilizing the enclosed budget forms as applicable, to detail the cost of the request.
2. The applicant shall provide its anticipated quarterly funding requests for the fiscal year 2014-2015.

Quarter 1	Quarter 2	Quarter 3	Quarter 4	Total Grant
\$111,585	\$111,585	\$111,585	\$111,584	\$446,339

- The applicant shall provide a listing of all other sources of funding that they are trying to obtain for fiscal year 2014-2015.

Hawaii Agricultural Foundation Localicious - \$50,000  
 Harold KL Castle Foundation - \$25,000  
 HCIA (Dow Chemical, Syngenta, Monsanto) - \$25,000  
 Atherton Foundation - \$25,000  
 Campbell Foundation - \$25,000  
 McInerny Foundation - \$25,000

- The applicant shall provide a listing of all state and federal tax credits that have been granted within the prior three years. Additionally, the applicant shall provide a listing of all state and federal tax credits they have applied for or anticipate applying for pertaining to any capital project, if applicable.  
 N/A

#### **IV. Experience and Capability**

##### **A. Necessary Skills and Experience**

The applicant shall demonstrate that it has the necessary skills, abilities, knowledge of, and experience relating to the request. State your experience and appropriateness for providing the service proposed in this application. The applicant shall also provide a listing of verifiable experience of related projects or contracts for the most recent three years that are pertinent to the request.

The Hawaii Agricultural Foundation has been in existence for the last five years. It has been successful in developing a number of initiatives including the Hawaii Food & Wine Festival, Kunia Ag Park and Lei Fresh. The HAF recently launched a field test of Veggie U with seven teachers and four schools on Oahu, Maui and Kauai.

The HAF has a five-year strategic plan with priorities to develop its Educational Programs.

##### **B. Facilities**

The applicant shall provide a description of its facilities and demonstrate its adequacy in relation to the request. If facilities are not presently available, describe plans to secure facilities. Also describe how the facilities meet ADA requirements, as applicable.

The HAF currently operates a 184-acre ag park in Kunia for 19 farmers. It does not currently have office facilities.

## V. Personnel: Project Organization and Staffing

### A. Proposed Staffing, Staff Qualifications, Supervision and Training

The applicant shall describe the proposed staffing pattern and proposed service capacity appropriate for the viability of the request. The applicant shall provide the qualifications and experience of personnel for the request and shall describe its ability to supervise, train and provide administrative direction relative to the request.

The HAF is managed by an Executive Director (ED) who reports to a 12-member Board of Directors. The Education Program is overseen by an Education Manager who reports to the ED. See qualifications below:

#### **Denise Hayashi, Executive Director**

Prior to working for the HAF, Hayashi was a consultant to the Hawaii Farm Bureau Federation where she helped craft the language, vision and mission of the Foundation. She has more than eighteen years working as a consultant and executive with non-profit organizations specializing in strategic planning, fund development, marketing, government affairs, public relations and community relations. Her past employers and clients include NCL America, Bishop Museum, Japanese Cultural Center, Hawaii Foodbank, U.S. Senator Daniel K. Inouye, 3Rs, Artisans' Farmers Alliance, Durrant Media Five, Hawaii Institute for Public Affairs, Hawaii Farm Bureau Federation, Coast Guard Foundation, Hawaii Forest Industry Association, Hawaii Forest Institute, Hawaii High School Athletic Association, U.S.S. Battleship Missouri Association and the State of Hawaii Procurement Office. Highlights of her career include:

- Development of a long-term strategic planning for Hawaii Forest Institute
- Development of community relations strategies, key messaging and educational programs for NCL America
- Fund development, governmental relations and public relations strategies to secure funding support for Bishop Museum including the Mamiya Science Adventure Center, ADA facility compliance, Amy Greenwell Ethnobotanical Garden (Hawaii Island), a new Magnet School from the State, and Hawaiian Hall.

#### **Malia Crowell – Education Program Manager**

Malia Crowell currently manages the education programs of HAF, Ag in the Classroom and In the Fields. She also teaches for Kamehameha Scholars, a program for students in grades 9-12 that provides college guidance. She has taught in a variety of educational settings, which include Kamehameha and

Punahou Schools. Crowell holds a Bachelor in Business Administration of Finance and a Master in Teaching from the University of Hawaii at Manoa. She holds a State of Hawaii teaching license in grades K-6. Malia has over ten years of experience working with students ranging from five to 18 years in age in a variety of settings including teaching and coaching. She believes children should be provided with a diverse range of learning opportunities. Her mission is to educate the “whole child,” giving students a healthy, safe, engaging, supportive, creative and challenging learning environment.

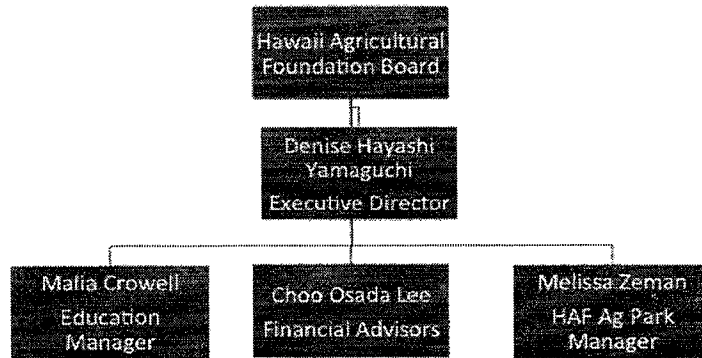
**Melissa Zeman – HAF Ag Park at Kunia Property Manager**

Melissa Zeman currently manages the Hawaii Agriculture Foundation (HAF) Ag Park at Kunia. Combining her experience in farming and agronomy with her knowledge of marketing and distributing produce, she is able to assist both new farmers and more experienced local producers. Forging a successful partnership between small farmers and large landowner is her goal as property manager, as well as assisting the Park's farmers in managing their day-to-day needs on the farm. Zeman serves on the board of the South O`ahu Soil and Water Conservation District and provides grant writing assistance to Sustain Pro Management, concentrating on agriculture and energy related projects. Zeman also began working with GreenWheel Food Hub in early 2013 as the market liaison at the Honolulu Farmers Market. GreenWheel Food Hub is working to implement EBT (food stamps) acceptance at farmers' markets on O`ahu and to use off grade and surplus produce in value-added processing to reduce waste. Zeman has an MSc in Environmental Science & Policy from Johns Hopkins University. She has also held various positions with O`ahu Resource Conservation & Development Council and Pioneer Hi Bred. She is also owner and founder of O`ahu Fresh, a local produce delivery company which brings affordable local fresh produce and specialty items to consumers who want to support local farmers.

**B. Organization Chart**

The applicant shall illustrate the position of each staff and line of responsibility/supervision. If the request is part of a large, multi-purpose organization, include an organizational chart that illustrates the placement of this request.

## Hawaii Agricultural Foundation



### VI. Other

#### A. Litigation

The applicant shall disclose any pending litigation to which they are a party, including the disclosure of any outstanding judgement. If applicable, please explain.

None.


#### B. Licensure or Accreditation

Specify any special qualifications, including but not limited to licensure or accreditation that applicant possesses relevant to this request.

None.

**BUDGET REQUEST BY SOURCE OF FUNDS**  
(Period: July 1, 2014 to June 30, 2015)

Applicant: Hawaii Agricultural Foundation

<b>BUDGET CATEGORIES</b>	<b>Total State Funds Requested (a)</b>	<b>(b)</b>	<b>(c)</b>	<b>(d)</b>	<b>(e)</b>
<b>A. PERSONNEL COST</b>					
1. Salaries	74,587				
2. Payroll Taxes & Assessments	10,275				
3. Fringe Benefits	5,138				
<b>TOTAL PERSONNEL COST</b>	<b>90,000</b>				
<b>B. OTHER CURRENT EXPENSES</b>					
1. Airfare, Inter-Island	57,340				
2. Insurance	0				
3. Lease/Rental of Equipment	0				
4. Lease/Rental of Space	0				
5. Staff Training	24,500				
6. Supplies	46,139				
7. Telecommunication	0				
8. Utilities	0				
9 School Bus Transportation	0				
10 Milage	0				
11 Refreshments for Students	0				
12 Printing	0				
13 Publicity	0				
14 Website Development	0				
15 Ground Transportation	11,800				
16 Student Leadership Training	6,000				
17 FFA Chapter Subsidy	72,000				
18 Substitute Teacher Cost	54,960				
19 Stipends	83,600				
20					
<b>TOTAL OTHER CURRENT EXPENSES</b>	<b>356,339</b>				
<b>C. EQUIPMENT PURCHASES</b>					
<b>D. MOTOR VEHICLE PURCHASES</b>					
<b>E. CAPITAL</b>					
<b>TOTAL (A+B+C+D+E)</b>	<b>446,339</b>				
<b>SOURCES OF FUNDING</b>		Budget Prepared By:			
(a) Total State Funds Requested	446,339	Denise Hayashi Yamaguchi		808-386-2538	
(b) Other		Name (Please type or print)		Phone	
(c)				January 31, 2014	
(d)		Signature of Authorized Official		Date	
<b>TOTAL BUDGET</b>	<b>446,339</b>	Denise Hayashi Yamaguchi, Executive Director			
		Name and Title (Please type or print)			

## BUDGET JUSTIFICATION PERSONNEL - SALARIES AND WAGES

Applicant: Hawaii Agricultural Foundation \_\_\_\_\_

Period: July 1, 2014 to June 30, 2015

POSITION TITLE	FULL TIME EQUIVALENT	ANNUAL SALARY A	% OF TIME ALLOCATED TO GRANT REQUEST B	TOTAL STATE FUNDS REQUESTED (A x B)
Education Program Manager (Elementary)	1	\$37,293.50	100.00%	\$ 37,293.50
Education Program Manager (Secondary)	1	\$37,293.50	100.00%	\$ 37,293.50
				\$ -
				\$ -
				\$ -
				\$ -
				\$ -
				\$ -
				\$ -
				\$ -
				\$ -
				\$ -
				\$ -
<b>TOTAL:</b>				<b>74,587.00</b>
<b>JUSTIFICATION/COMMENTS:</b>				

## BUDGET JUSTIFICATION - EQUIPMENT AND MOTOR VEHICLES

Applicant: Hawaii Agricultural Foundation\_\_\_\_ Period: July 1, 2014 to June 30, 2015

DESCRIPTION EQUIPMENT	NO. OF ITEMS	COST PER ITEM	TOTAL COST	TOTAL BUDGETED
N/A				
			\$ -	
			\$ -	
			\$ -	
<b>TOTAL:</b>				
<b>JUSTIFICATION/COMMENTS:</b>				

DESCRIPTION OF MOTOR VEHICLE	NO. OF VEHICLES	COST PER VEHICLE	TOTAL COST	TOTAL BUDGETED
N/A			\$ -	
			\$ -	
			\$ -	
			\$ -	
			\$ -	
<b>TOTAL:</b>				
<b>JUSTIFICATION/COMMENTS:</b>				



## BUDGET JUSTIFICATION CAPITAL PROJECT DETAILS

Applicant: Hawaii Agricultural Foundation

Period: July 1, 2014 to June 30, 2015

FUNDING AMOUNT REQUESTED						
TOTAL PROJECT COST	ALL SOURCES OF FUNDS RECEIVED IN PRIOR YEARS		STATE FUNDS REQUESTED	OTHER SOURCES OF FUNDS REQUESTED	FUNDING REQUIRED IN SUCCEEDING YEARS	
	FY: 2012-2013	FY: 2013-2014	FY:2014-2015	FY:2014-2015	FY:2015-2016	FY:2016-2017
PLANS						
LAND ACQUISITION						
DESIGN						
CONSTRUCTION						
EQUIPMENT						
<b>TOTAL:</b>						
JUSTIFICATION/COMMENTS: N/A						

**DECLARATION STATEMENT  
APPLICANTS FOR GRANTS AND SUBSIDIES  
CHAPTER 42F, HAWAII REVISED STATUTES**

The undersigned authorized representative of the applicant acknowledges that said applicant meets and will comply with all of the following standards for the award of grants and subsidies pursuant to section 42F-103, Hawaii Revised Statutes:

- (1) Is licensed or accredited, in accordance with federal, state, or county statutes, rules, or ordinances, to conduct the activities or provide the services for which a grant or subsidy is awarded;
- (2) Comply with all applicable federal and state laws prohibiting discrimination against any person on the basis of race, color, national origin, religion, creed, sex, age, sexual orientation, or disability;
- (3) Agree not to use state funds for entertainment or lobbying activities; and
- (4) Allow the state agency to which funds for the grant or subsidy were appropriated for expenditure, legislative committees and their staff, and the auditor full access to their records, reports, files, and other related documents and information for purposes of monitoring, measuring the effectiveness, and ensuring the proper expenditure of the grant or subsidy.

In addition, a grant or subsidy may be made to an organization only if the organization:

- (1) Is incorporated under the laws of the State; and
- (2) Has bylaws or policies that describe the manner in which the activities or services for which a grant or subsidy is awarded shall be conducted or provided.

Further, a grant or subsidy may be awarded to a non-profit organization only if the organization:

- (1) Has been determined and designated to be a non-profit organization by the Internal Revenue Service; and
- (2) Has a governing board whose members have no material conflict of interest and serve without compensation.

For a grant or subsidy used for the acquisition of land, when the organization discontinues the activities or services on the land acquired for which the grant or subsidy was awarded and disposes of the land in fee simple or by lease, the organization shall negotiate with the expending agency for a lump sum or installment repayment to the State of the amount of the grant or subsidy used for the acquisition of the land.

Further, the undersigned authorized representative certifies that this statement is true and correct to the best of the applicant's knowledge.

Hawaii Agricultural Foundation

(Typed Name of Individual or Organization)



(Signature)

January 30, 2014

(Date)

Denise Hayashi

(Typed Name)

Executive Director

(Title)