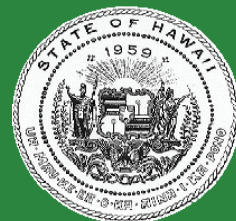




Ko'olau Konnections



From the Office of State Senator Jill N. Tokuda

VOLUME 6, ISSUE 2

MARCH 2012

LEGISLATIVE UPDATES

Senate District 24 (Kaneohe and Kailua)

Chair of Senate Education Committee
Member of the Agriculture;
Water, Land and Housing;
and Ways and Means Committees
Majority Whip

ON THE MOVE...

On February 4th, Senator Tokuda attended and helped paint over graffiti at the 96744 Community Clean Up and Graffiti Paint Out.

...

Senator Tokuda also attended the Ramsar World Wetland Day on February 4th.

...

On February 6th, Senator Tokuda hosted a District 24 Town Hall Meeting at Windward Community College.

...

Senator Tokuda attended the Windward District Science Fair on February 11th. Windward District had 90% of schools participating!

...

On February 16th, Senator Tokuda attended Coffee Hour at Castle High School to discuss with parents & administration concerns about the transition to smaller learning communities.

...

Senator Tokuda attended an assembly at Castle High School to celebrate 25 years of sister school relationship with Musashino Seijo in Japan on February 21st.

...

On February 28th, Senator Tokuda attended a meeting with Castle Hills residents about Access Road and Drainage Improvements.

SB2545 - Relating to Early Education

Establishes the executive office on early learning and the early learning advisory board to replace the early learning council. Repeals junior kindergarten programs at the end of the 2013-2014 school year, but lays the framework for a statewide preschool program. Clarifies that beginning with the 2014-2015 school year, requires students to be at least five years of age on July 31 of the school year in order to attend kindergarten. *(Passed out of WAM on February 23)*

SB2115/SB2116 - Charter School Omnibus and Transition Plan

Establishes a new chapter governing charter schools & completely re-codifies HRS302B, based on the recommendations of the charter school governance, accountability, and authority task force established by Act 130, Session Laws of Hawaii 2011 & inline with the National Charter School Model Law. Provides resources & time for implementation & transition to the new system. *(Passed out of WAM on February 29)*

SB2540/SB2541/SB2542/SB2543/SB2528 Hawaii Revised Statutes; Clean up Bills

Amends or repeals various provisions of chapter 302A, Hawaii Revised Statutes, as part of statutory clean up & streamlining effort. *(Passed out of WAM on February 23)*

SB 2536 Relating to Clean and Sober Homes and Halfway Houses (HB2413)

Establishes a temporary clean and sober home and halfway house task force. Requires the task force to submit a report to the legislature containing findings and recommendations and any proposed legislation that may be necessary to effectuate those requirements. *(Passed out of WAM on February 24)*

SB 2681 Relating to Defendants Committed to the Custody of the Director of Health

Allows for the transfer of persons committed to the custody of the director of health to be transferred to correctional facilities under certain conditions. *(Passed out of WAM on February 28)*

SB 2147 Relating to the Regulation of Clean and Sober Homes and Halfway Houses (HB1993)

Requires the licensing of all clean and sober homes and halfway houses. Requires the Department of Human Services to adopt rules that regulate these dwellings. (This bill is scheduled to be heard on Tuesday, February 7, 2012.) DEAD

SB 2682 Relating to Clean and Sober and Halfway Home Regulation (HB2414)

Establishes a licensing requirement for all clean and sober homes and halfway houses and requires that department of health to establish rules and oversee them. DEAD

SB 3060 Relating to Sex Offenders

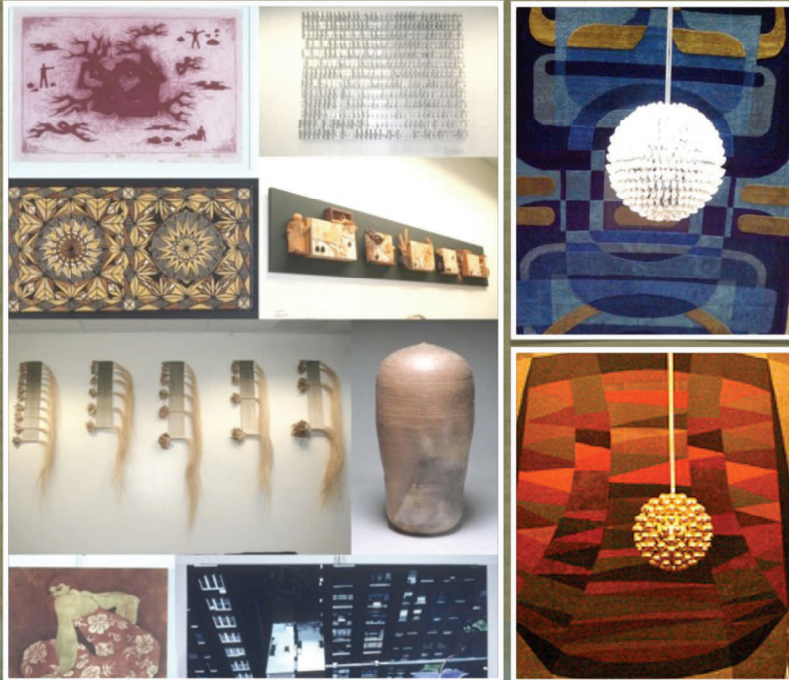
Makes it a class C felony for persons convicted of certain sexual offenses committed against a child twelve years of age or younger to reside within seven hundred fifty feet of any school building or any real property comprising a school. DEAD

SB 2524 Relating to Haiku Valley (HB2246—Passed out of FIN)

Establishes the Haiku Valley cultural preserve commission to provide policy and management oversight of the Haiku Valley cultural preserve. Initiates process of conveying Haiku Valley in fee simple to the Department of Land and Natural Resources. DEAD

DISTRICT EVENTS

- 96744 5Rs Fair - Saturday, March 3, 2012 10AM-4PM @ King Intermediate
- Maunawili Elementary 2012 Curriculum Fair - Monday, March 5, 2012 8AM-6PM @ Maunawili Elementary School
- Ho'olaulima Ia Kawainui Meeting - Tuesday, March 6, 2012 7PM-9PM @ Aikahi Elementary School
- Pu'ohala Elementary 2012 Curriculum Night - Thursday, March 8, 2012 5:30PM-7:30PM @ Pu'ohala Elementary
- Project C.L.E.A.N. - Saturday, March 10, 2012 8AM-11AM @ Kailua District Park
- Olomana Community Association Garage Sale - Saturday, March 17, 2012 8AM-1PM
- Kainalu Little League Opening Day - Saturday, March 24, 2012 8AM @ Norman Aweau Field (Aikahi Elementary)
- 2012 Friends of Kailua High School Fun Run - Sunday, March 25, 2012 7:00AM @ Kailua High School
- Keolu Elementary 2012 Curriculum Fair - Wednesday, April 4, 2012 5PM-7:30PM and April 5, 2012 8AM-1PM @ Keolu Elementary School
- Aloha Aina Earth Day - Saturday, April 7, 2012 8AM-2PM @ Kalaheo High School



ART @ THE CAPITOL

First Friday March, 2, 2012 from 5:00 p.m.-7:00 p.m.

Please join us at the **Hawaii State Capitol** on **Friday March 2, 2012**, from 5:00 p.m. to 7:00 p.m., for the 4th Annual **Art at the Capitol**. This is an opportunity for the public to view more than 460 works of art that are part of the State's **Art in Public Places Programs**.

This year's event will feature a debut of a documentary on Ruthadel Anderson, artist of the Senate and House tapestries, and Keiko Sato, who speaks of her brother Tadashi Sato, artist of the Aquarius mosaic. Guests will also be able to enjoy live music, tour the capitol, and mingle with artists and lawmakers.



<http://www.facebook.com/artatthecapitolhawaii>



<http://www.youtube.com/artatthecapitolhi>



#HICapitolArt

Senator Tokuda's Art Review (STAR) Program

Heeia Elementary School has student artwork on display at the Hawaii State Capitol as a part of the STAR Program for the month of March.

The public is welcome to view the artwork at the State Capitol, Chamber Level, Monday through Friday from 6:00 a.m. to 6:30 p.m. (excluding holidays) and Saturday from 8:00 a.m. to 2:00 p.m.

CONTACT SENATOR JILL N. TOKUDA

Hawaii State Capitol, Room 218 • Honolulu, Hawaii 96813

Phone: 587-7215 • Fax: 587-7220 • Email: sentokuda@capitol.hawaii.gov

Website: <http://tinyurl.com/sentokuda>

Let us know if you'd like to receive our *Ko'olau Konnections* newsletter!

OFFICE STAFF:

Darlene Tsukazaki, Office Manager

Erin Conner, Community Liaison

Allen Awaya, Committee Clerk

Vaughn Tokashiki, Legislative Aide

Zach Dilonno, UH Law School Extern

Carol Pang, Joanne Swearingen

Volunteers