

Groundbreaking for New Performing Arts Center

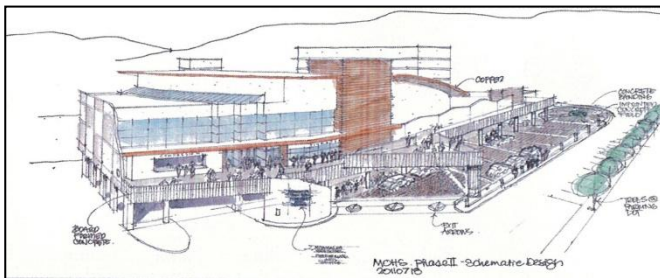
By the Office of Rep. Ichiyama

December 5, 2011



Dec 2, 2011- Ground Breaking Ceremony at Moanalua High School.

On December 2, 2011, a groundbreaking ceremony was held for Phase One of construction of the new Moanalua Performing Arts Center. Phase One is located near the Student Center and will include the new band room and practice facilities. The facility is being built with funds your area legislators worked to obtain for our community during the past legislative session, construction is expected to commence in mid December and will take approximately two years to complete. Please bear in mind that there may be some disruptions during the construction work, however every effort will be made to expedite the work with the least amount of inconvenience to our community.



Phase Two Schematic Design

Phase Two of the Performing Arts Center will be the new stage for the school's music programs. The design includes a 1000-seat auditorium, box office and music library. Your area legislators will continue to work to allocate funds to build Phase Two. It will be the centerpiece for a community that is proud of its keiki.

Nearly 600 students at Moanalua high School are involved in the largest music program of the state - a program that continues to grow and bring international recognition to Hawaii.

If you have questions or concerns, please do not hesitate to contact our office.