



# REPRESENTATIVE CORINNE W.L. CHING

## Kalihi/Palama Neighborhood Board Newsletter

LILIHA · NUUANU · PUUNUI · ALEWA HEIGHTS · PALAMA

FEBRUARY 2011

### INSIDE THIS ISSUE

- 2011 Staff Introductions
- Important Legislation
- Liliha Vitality Project
- Community Events
- Constituent Survey (Please send us back your response!)
- Cacao events



Dear Family and Friends,

Happy Chinese New Year! It continues to be my honor to continue to serve as your State Representative. As we have already begun this 26th Legislative Session we face more challenges than ever before. If you have any questions or concerns, please feel free to contact my office at 586-9415. We value your input. We have enclosed a survey in this issue to provide us with your feedback.

As we begin this Year of the Rabbit, we hope to hit the ground running with many of our initiatives. We are happy to report that our annual events this past year, I Love Liliha Town Festival and the Liliha Gingerbread Festival were very successful. We thank all of the participants and volunteers for their support and commitment. We will continue our ever popular 5th Annual Liliha-Nu`uanu Candlelight Tour which will be held on Friday, February 18, 2011. Additionally, we will be launching the first ever Vitality Project for Liliha to address the health and well being of our community. We are also very interested in APEC and what it can mean for our district. Please note on page 4, **the First Hawaii Chocolate Festival will be at Dole Cannery on Saturday, February 26, from 12-5 pm.**

I appreciate your trust in me, it's a privilege to be your Representative.

Mahalo nui loa,

Representative Corinne W. L. Ching

### Representative Ching's 2011 Committees

- Higher Education (HED)
- Tourism (TOU)
- Health (HLT)
- Human Services (HUS)
- Consumer Protection and Commerce (CPC)

## Your 2011 Legislative Session Staff: Working for You



### Jessica Grant Office Manager

Jessica has worked for the Hawaii State Senate for Minority Leader Senator Fred Hemmings since 2007. She graduated from Whittier College with a BA in Political Science.

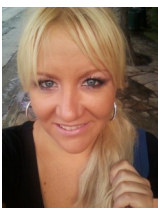


### Jocelyn Ho Community Liaison

Jocelyn "Jenn" is a third generation Liliha-Palama resident. She returns to our office to continue to serve the community.

### Nic Maselli Legislative Aide

Nic has an broad background in both business and architecture with a degree from Texas A&M University.



### Natalia Ivanitskaya Legislative Aide

Natalia has an extensive managerial background. She is currently working on a graduate degree in Homeland Security Leadership Development.



### Tristan Royce-Carter Legislative Aide

Tristan has a lot of skill and knowledge in his field of study, information technology.

### Yekaterina Sukhova Intern

Yekaterina "Katya" is our high school intern. She visited us for a job shadow program here at the Capitol and loved the experience so much that she wanted to stay on as our intern to learn more about politics in Hawaii.

# IMPORTANT BILLS THIS 2011 LEGISLATIVE SESSION

## ECONOMY

**HB 781** (Relating to Stand-Alone Casino Gaming; Waikiki) Grants 10-year license for 1 stand-alone casino in Waikiki not in a hotel. Establishes Hawaii gaming control commission. Imposes 6.75% wagering tax on gross receipts. Creates state gaming fund and compulsive gambler program. (\$)

**HB 394 HD1** (Gambling; Slot Machine; Video Poker Gambling; Constitutional Amendment) Proposes a constitutional amendment to legalize slot machine and video poker gambling that are not visible from the street in designated resort areas on the island of Oahu as provided by law.

**HB 1225** (Relating to Bingo) Allows bingo to be conducted by 1 licensee at 1 location on lands designated by the Hawaiian homes commission. Creates Hawaii bingo commission within department of commerce and consumer affairs to regulate bingo. Allocates 20% of general excise tax on gross receipts to the state general fund; 1% for a compulsive gambler program; up to 4% for administrative expenses; and the balance for deposit into the Hawaiian home lands trust fund.

**HB 1536** (Relating to Gaming) Establishes Hawaii Gaming Control Commission and framework for casino gaming on Oahu. Levies ten per cent tax, of which five per cent is to be remitted to the City and County of Honolulu to fund the fixed guideway transportation system on Oahu. Repeals general excise tax surcharge to fund transit on Oahu.

**HB 1301** (Relating to Gambling) Exempts from gambling offenses, any game where the outcome is predominantly determined by the skill of the players, including chess, bridge, backgammon, poker, rummy, golf, and bowling, but excluding games that are determined in part by a computer program.

**HD 835 HD1** (Proposing an amendment to Article VII, Section 6, of the Hawaii Constitution, relating to the Disposition of Excess Revenues) Proposes a constitutional amendment to article VII, section 6 of the state constitution to authorize the legislature to deposit excess general fund revenues into a fund to fund pension benefits and other post-employment benefits for State employees.

**HB 1092** (Relating to Taxation) Makes various amendments to the tax laws including indexing income tax amounts for inflation; excluding pension income from income tax only for certain persons; eliminating the deduction for state income taxes paid; eliminating the income tax exclusion for certain persons involved in copyrights; and modifying the tax rate on timeshare occupants and modifying the tax base upon which these persons are taxed.

## ENVIRONMENT/HEALTH

**HB 1601** (Relating to Recycling) creates a ban on plastic bags effective July 1, 2012.

**HB 1165** (Relating to Compassion in Passing) Allows a terminally ill, competent adult to get lethal dose of medication to end life. Prohibits mercy killings, lethal injections, and active euthanasia. Requires informed consent. Allows alternate doctor to replace attending doctor if latter declines to prescribe. Requires monitor at time of taking dose.

**HB 1383** (Relating to Death with Dignity) Allows a terminally ill, competent adult to get lethal dose of medication to end life. Prohibits mercy killings, lethal injections, and active euthanasia. Requires informed consent. Allows alternate doctor to replace attending doctor if latter declines to prescribe. Requires monitor at time of taking dose.

**HB 1453** (Relating to Legal Relationships) Establishes civil unions and provides to civil union partners the benefits and obligations conferred upon a couple by marriage. Provides for termination of civil unions through the judicial system.

**HB 1623** (Relating to Civil Unions) Extends the same rights, benefits, protections, and responsibilities of spouses in a marriage to partners in a civil union.

## EDUCATION

**HB 11** (Relating to Education) Amends law to require that children who are at least 5 years of age on or before August 1 of the school year attend a public school kindergarten.

**HB 447** (Relating to Education) Increases the amount of education funds that are expended by principals.

**HB 479** (Relating to the Department of Education) Mandates a periodic comprehensive review of the Department of Education, consisting of, at a minimum, a full management and financial audit of the Department of Education.

**HB 480** (Relating to Education Governance) Requires the members of the Board of Education to be nominated and, with the advice and consent of the Senate, appointed by the Governor.



*Members of the House Minority Caucus (From L-R) Rep. Cynthia Thielen, Rep. Aaron Johanson, Rep. Corinne Ching, Rep. George Fontaine, Rep. Kym Pine, Rep. Gil Riviere, Rep. Barbara Marumoto, Rep. Gene Ward.*

**HB520** (Relating to Education) Provides a tuition incentive for public school students who complete their high school education before grade 12, and attend a college within the University of Hawaii system.

## ETHICS

**HB 637** (Relating to Ethics) Requires lobbyists and their clients to make monthly disclosures during any month the legislature is in session, and a report for June 1 through December 31. Adds required disclosures regarding lobbying events, contractual relationships with legislators, and campaign contributions. Requires the governor, lieutenant governor, and legislators to file their financial disclosures by January 31 after the beginning of the regular legislative session. Requires certain state employees to disclose contractual relationships with lobbyists and their clients.

## Save Our Doctors



On Wednesday February, 9th, 2011 Representative Ching addressed the Save our Doctors group who were advocating for medical tort reform.

Save our Doctors is a non-profit coalition of patients and concerned citizens who have experienced reduced access to health care by the lost of trusted physicians or the unavailability of specialist doctors in times of need.



**8th Annual  
I Love Liliha Festival  
August 28, 2011**



**LILIHA**<sup>TM</sup>

## Representative Ching Launches the LILIHA VITALITY PROJECT

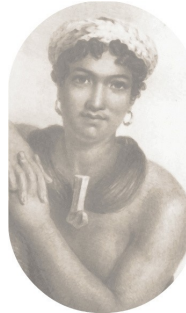
*What does the "Vitality" project mean for Liliha?* There is nothing more important than future growth and prosperity of our community and its members. The Vitality Project's goal is to add years to the lives of those in the community by encouraging them to make small changes in their daily lives. Areas shown to be home to healthiest, longest living humans were classified as "Blue Zones". These areas shared many similarities in climate and geography to Oahu and we feel by implementing certain lifestyle and community based measures that we can achieve this outcome.

The I LOVE LILIHA Town Festival shows how as a community we can come together and demonstrate our sense of place and close family ties. Vitality project initiatives include easier access to healthier foods, encouraging parents to walk their children to school, community gardens for citizens to plant their own produce and workshops. The "Vitality Compass" asks participants questions about their eating habits, sleeping habits, levels of stress and amount of daily activity. The average life expectancy for those who took the Vitality Compass at the beginning and at the end of the program increased by three years. Going forward we want to ensure we spread the word of "Vitality" in Liliha and give our keiki the healthy, active future they deserve.

### REPRESENTATIVE CHING RECEIVES SCHOLARSHIP FOR WOMEN IN GOVERNMENT 2ND ANNUAL DIABETES TASK FORCE

Representative Ching recently received a scholarship to attend the Women in Government's 2nd Annual Diabetes Task Force in Naples, Florida on March 4-6, 2011. Women in Government is a national, non-profit, bi-partisan organization of women state legislators whose mission is to "provide leadership opportunities, networking, expert forums, and educational resources to address and resolve complex policy issues."

## 5<sup>th</sup> Annual Liliha-Nu`uanu District Candlelight Tour February 18, 2011 6:00-9:00 pm



Chiefess Kuini Liliha namesake of Liliha

Our 5th Annual Liliha-Nu`uanu District Candlelight Tour is once again be a popular opportunity for residents to take a vested interest in organizations that are operating within their own backyards, and for participants to reconnect with their heritage, as many Liliha-Nu`uanu residents are of Japanese ancestry.

With the gracious support of **Community Church of Honolulu**, attendees will be able to park and hop onboard one of two trolleys chartered for the evening. The trolleys will stop along the beautiful grounds of each participating organization, and attendees can take advantage of the rare opportunity to visit and learn valuable information about the mission, histories and values of the respective organizations in addition to enjoying light refreshments and entertainment at each stop. Attendees also will receive a commemorative Chiefess Liliha tote bag filled with information on the evening, the district, and more. This unique event will allow residents of Liliha and Nu`uanu to connect with the beautiful sites that add to the charm and historical value of this special community.

## Representative Corinne W.L. Ching

## Constituent Survey 2011

### TELL US WHAT YOU THINK???

Would you like to see the proposed tax increase on alcohol and soda passed?

- In Favor  
 Opposed

Comments:

---

Do you feel the proposal to treat pension income the same as regular income for tax purposes will be beneficial for our senior citizens?

- In Favor  
 Opposed  
 Unsure

Comments:

---

Would you like to see gambling legalized in Hawaii?

- In Favor  
 Opposed  
 Unsure

Comments:

---

Are you in favor of civil unions being held in your community?

- In Favor  
 Opposed  
 Unsure

Comments:

---

Relating to the "Vitality" initiative, if you could participate in events aimed at boosting your community's health, well being and economic status. Would you?

- Yes  
 No

Comments:

---

### CONTACT INFORMATION

Name: \_\_\_\_\_

Address: \_\_\_\_\_

City: \_\_\_\_\_

Zip Code: \_\_\_\_\_

E-mail: \_\_\_\_\_

Please send me e-mail updates from Rep. Corinne Ching.

# February Celebrates Hawaii Grown Cacao Month



(Above from L-R) Glynnis Rissmiller from Sweet Paradise Chocolatier, Rep. Ching, and Amy Hammond from Special Events Hawaii celebrate Cacao Month at the Capitol; (below) Rep. Ching addressed the members of the Agriculture committee on behalf of her cacao bill.



February kicks off Hawaii Grown Cacao Month. Cacao holds a special place in history. *Theobroma cacao*, otherwise known as chocolate and translated into English as the "Food of the Gods", was introduced to the Hawaiian Islands in 1850. Cacao was used for centuries as a medicine and cacao has high concentrations of theobromine, a purine alkaloid that has both a calming effect on the brain and an energizing effect on the nervous system. It has also been found to stimulate the appetite and to reduce fatigue.

Each year, the chocolate industry produces \$75 billion worldwide. Hawaii's environment and climate position it as the only state in the United States that can commercially grow cacao. Hawaii is ideally in close proximity to both Asia and mainland US, located to capture and prosper from the opportunities from a growing cacao market. Asia has already developed into a major chocolate market and Japan has experienced a significant increase in chocolate consumption during the past decade.

Today, the cacao industry is poised to heighten the state's economy with a broad range of job opportunities and increased revenue from diversified agriculture, production and processing, in addition to research and development with the potential to attract federal funds. Cacao possesses a propitious opportunity to develop a new industry in the growing, cultivating, processing, and shipping of Hawaii-grown cacao to the mainland United States and the rest of the world.

**The First Hawaii Chocolate Festival will be at Dole Cannery from Noon-5 pm. Visit [www.HawaiiChocolateFestival.com](http://www.HawaiiChocolateFestival.com) for more details.**



Representative Ching with participants at the Cacao Fest



Representative Ching judges the Second Annual Cacao Fest in Hale'iwa.

## TOP 10 REASONS WHY WE SHOULD SUPPORT CACAO IN HAWAII

- Cacao can provide a great employment and economic opportunity for our citizens in research, marketing, agriculture, ecotourism, retail and more.
- Cacao grows only in Hawaii out of all 50 states, due to climate requirements.
- Cacao enjoys high demand in Asia; taking advantage of Hawaii's proximity to Asian markets.
- Cacao represents quality over quantity, a niche market in which Hawaii can excel.
- Cacao, the plant, is environmentally sustainable.
- Cacao grows quickly compared to many other agricultural crops.
- Cacao can be combined successfully with many other locally-grown products thereby enhancing other crops' profits simultaneously (papaya, mango, lilikoi, pineapple, Ka'u orange, apple banana, etc.).
- Cacao is a revenue-producing crop which helps to preserve green and open space.
- Cacao has multiple uses: solid, liquid, cocoa butter (cosmetics) and more.
- Cacao thrives in Hawaii's soil thereby, like Kona Coffee, has great taste.

**HAWAII'S Sweetest Celebration**  
**Chocolate Festival**  
 A celebration of all things chocolate  
**SPOTLIGHTING HAWAIIAN GROWN CACAO!**  
**Saturday, February 26, 2011**  
**Shops at Dole Cannery from noon to 5 p.m.**

**HAWAII'S SWEETEST CELEBRATION**

- Support Hawaii's Emerging Cacao Industry
- Live Entertainment
- Guest speakers
- Learn how to pair wine with Chocolate
- Visit the Chocolate Spa, Chocolate Garden and Coco Café & Tea House
- Shop for everything Chocolate: from Chocolate Orchids to Chocolate Pearls and more...

TICKETS:  
 \$20 IN ADVANCE ONLINE  
 \$25 AT THE DOOR (LIMITED TICKETS AVAILABLE)  
*A benefit for Halau O Nio Pua Kahu*

PRESENTED BY SPECIAL EVENTS HAWAII  
 SPONSORED IN PART BY: