

SB 564

Testimony

NEIL ABERCROMBIE
Governor



RUSSELL S. KOKUBUN
Chairperson, Board of Agriculture

SCOTT E. ENRIGHT
Deputy to the Chairperson

State of Hawaii
DEPARTMENT OF AGRICULTURE
1428 South King Street
Honolulu, Hawaii 96814-2512
Phone: (808) 973-9600 FAX: (808) 973-9613

TESTIMONY OF RUSSELL KOKUBUN
CHAIRPERSON, BOARD OF AGRICULTURE

BEFORE THE SENATE COMMITTEES ON AGRICULTURE AND EDUCATION
Thursday, January 6, 2013
Room 414
1:35 P.M.

SENATE BILL NO. 564
RELATING TO AGRICULTURE

Chairpersons Nishihara and Tokuda and Members of the Committees:

Thank you for the opportunity to provide testimony on Senate Bill No. 564. The purpose of this measure is to establish a farm-to-school program and establish a task force to examine the feasibility of establishing school gardens and creating a Hawaii-grown fresh fruit and vegetable program. While the Department of Agriculture supports the intent of this measure, it should be clear that the Department of Education and the State Procurement Office would be the lead agencies involved and that the Department of Agriculture would be a supportive agency to provide data and findings regarding agricultural production.

The Department believes in the potential of the school food network to greatly increase the amount of locally-grown fruits and vegetables that are procured within the state and has participated in a number of task forces and working groups surrounding this topic that reported to the legislature including: a report to the 2012 Legislature resulting from House Concurrent Resolution 167 (2011) and a report to the 2010 Legislature per Senate Concurrent Resolution 121 (2009). Both of these reports highlighted the difficulties that a farm-to-school program would encounter. As a result of these discussions, the development of Senate Bill 991 was introduced to exempt the



purchase of fresh meats and produce from the Hawaii Public Procurement Code. This appears to be the best way forward.

We thank you for the opportunity to provide our testimony on this measure.

From: mailinglist@capitol.hawaii.gov
To: [AGL Testimony](#)
Cc: steve_hirakami@notes.k12.hi.us
Subject: Submitted testimony for SB564 on Feb 6, 2013 13:35PM
Date: Friday, February 01, 2013 4:47:04 PM

SB564

Submitted on: 2/1/2013

Testimony for AGL/EDU on Feb 6, 2013 13:35PM in Conference Room 414

| Submitted By | Organization | Testifier Position | Present at Hearing |
|---------------------|---------------------|---------------------------|---------------------------|
| Steve Hirakami | HAASPCS | Support | No |

Comments: The best way to increase the amount of food produced here in Hawaii is to introduce the practice to our young students. Hawaii Academy of Arts & Science is committed to the often overused term: "sustainability". Students here are engaged in a lot of agricultural activities including: aquaculture, organic Kalo, organic vegetables, hydroponics, orchard management, poultry and beef, composting, and land and ocean awareness. A year ago, a House bill was introduced to start a program for pilot high schools on each island to be connected to the university and community colleges to promote and educate students on agricultural practices. That bill never made it through the session. Hopefully, this bill will be more comprehensive and look at the various offerings each island and community has to offer. Let's design a program that will fit into the geography, climate, and hydrology of the area that the school is located in. From the start, we should not create a one-size-fits-all type program that doesn't reflect the best use of each of our unique ecosystems around the State. Whatever the case, this is an important step in the right direction.

Please note that testimony submitted less than 24 hours prior to the hearing, improperly identified, or directed to the incorrect office, may not be posted online or distributed to the committee prior to the convening of the public hearing.

Do not reply to this email. This inbox is not monitored. For assistance please email webmaster@capitol.hawaii.gov



Testimony SB 564

Establish a Farm to School Program and Task Force

Hearing: February 6, 2013

Nancy Redfeather

Dear Chairs, Vice-Chairs, and Members of the Committees,

I am the Director of The Kohala Center's Hawai'i Island School Garden Network, working with 65 schools and school garden programs on Hawai'i Island public/private/charter K-12, a member of the Hawai'i Farm to School and School Garden Hui, a statewide coalition of School Garden Networks and supporting government, institution, and organizations, and a member of the Policy and Advocacy Working Group of the DOH School Garden Task Force.

According to our new DOE Statewide Survey of School Gardens in 2012, there is a growing movement across the state to create school gardens and integrate the nutritional and educational potential of place-based experiential education into the core curriculum of our schools. There are now 168 (43%) school gardens in Hawai'i.

A statewide agricultural strategic plan for Farm to School/School Gardens will promote expansion of farming opportunities (markets and production), create new incentives for farmers, infrastructure support, and facilitate agricultural sustainability, food safety and security. Farm-To-School Programs have been shown to result in increased market opportunities for local farmers and food processors and support economic development.

Farm-To-School and School Garden Programs K-12 improve children's knowledge about agriculture, food, nutrition, and environmental stewardship. Today in Hawai'i, one in 3 children entering school is overweight or obese and are suffering from related illnesses never before seen in children. A nutritionally healthy keiki is ready to learn.

Hawai'i does not have a viable farming workforce for future expansion and development of agricultural lands. Promotion of Farm-To-School and School Gardens K-12 can serve as a foundation for future opportunities in an agriculture related career path.

The USDA recognizes in its new Farm to School and School Garden Grants Program that these 2 programs are inseparable and complement each other. They weave together a fabric of increased prosperity and health for our youth, our communities, and our farmers.

Creating an official Farm to School Program in the state of Hawai'i and a Strategic Plan for that program are important first steps to embedding the commitment into the future of the our State Agencies.

Glenna Owens, Director of the School Food Authority is a leader in this area and I defer to her comments on the subject as well as comments by the Department of Health's Healthy Hawai'i Initiative.



Sincerely,
Nancy Redfeather
The Kohala Center – Hawai'i Island School Garden Network
Hawai'i Farm to School and School Garden Hui
Hawai'i School Garden Task Force



February 6, 2013
1:35 p.m.
Conference Room 414

TESTIMONY TO
THE JOINT SENATE COMMITTEES ON
AGRICULTURE AND EDUCATION

RE: SB 564 – Relating to Hawaii-Grown Produce

Chairs Nishihara and Tokuda, Vice Chairs Kouchi and Kidani and the members of the committees,

My name is Robert Witt and I am executive director of the Hawaii Association of Independent Schools (HAIS), which represents 99 private and independent schools in Hawaii and educates over 33,000 students statewide.

HAIS supports SB 564 which establishes the farm-to-school program in the department of agriculture to increase the procurement of locally-grown fruits and vegetables. Establishes a task force within the department of agriculture to examine the feasibility of establishing school gardens and creating a Hawaii-grown fresh fruit and vegetable program and to advise the department of agriculture in the creation and implementation of the farm-to-school program.

In 2010, at the request of the Department of Agriculture (DOA), HAIS launched GROW HAWAII, a three-year effort to build capacity for the use of Hawaii-grown agricultural products in schools, and cultivate healthy food attitudes and behaviors through school garden programs.

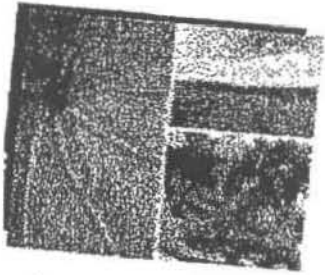
Grow Hawaii works to connect schools with Hawaii growers, and increase the capacity of school food services to use fresh produce. We observe that further work must be done to build upon our efforts and those of our partners in the Department of Education (DOE) Office of Child Nutrition to inform food growers of opportunities and procedures to sell to schools and to encourage the development of the Hawaii agriculture industry to meet the needs of institutional buyers. Furthermore, our experience corroborates the well-established notion that in order to increase student interest in healthy, local, food, we must encourage students' personal connection to the sources of their sustenance, as through garden-based education.

HAIS values the efforts on the part of the Department of Health to convene the School Garden Task Force, and wishes to see these efforts continue with collaboration from the DOE, the DOA and community stakeholders to plan, implement and evaluate a lasting farm to school program.

Thank you for the opportunity to testify.



Mālama Kauaʻi
MALAMAKAUAI.ORG



Malama Kauai

MAILING
Po Box 1414 Kilauea, HI 96754

PHONE
808-828-0585

FAX
808-828-0463

EMAIL
news@malamakauai.org

WEB
www.malamakauai.org

Testimony: SB 564
Establish a Farm to School Program and Taskforce
Hearing: February 6, 2013
Colleen Carroll

I commend the Department of Agriculture for putting a Farm to School Program for our Hawaii schools as a priority. There are many interrelated elements to the program in need of coordination, as mentioned, procurement, access to local Hawaii grown food, distribution and availability of produce to name just a few.

The success of a Farm to School Program is dependent upon the coordinated efforts of at minimum, three state departments mentioned in SB 564—the Department of Education, and the Department of Health, in tandem with the Department of Agriculture. I am a member of the Hawaii School Garden Task Force, The Hawaii School Garden and Farm to School Hui, and Director of the Kauai School Garden Network. I support the intent of this Bill and the goal of establishing a Farm to School Program at the state level in 2013.

Aloha,

Colleen Carroll, Ed.D.
Director, Kauai School Garden Network

Simon Russell
Hui 'O Mālama 'Āina
910-A E. Kuiaha Rd
Haiku, HI 96078

Aloha Honorable Senators,

I am writing to support SB. 564. The sad thing about the school gardens is that the school kitchens are unable to feed the children from them. I feel this bill begins to address this tragedy, as the kids can be fed cheetos and spam, but not lettuce from the garden. Mahalo.

Respectfully Submitted,
Simon Russell
Owner and Farmer
Hui 'O Mālama 'Āina

From: mailinglist@capitol.hawaii.gov
To: [AGL Testimony](#)
Cc: mendezj@hawaii.edu
Subject: *Submitted testimony for SB564 on Feb 6, 2013 13:35PM*
Date: Saturday, February 02, 2013 12:15:28 PM

SB564

Submitted on: 2/2/2013

Testimony for AGL/EDU on Feb 6, 2013 13:35PM in Conference Room 414

| Submitted By | Organization | Testifier Position | Present at Hearing |
|-----------------------|---------------------|---------------------------|---------------------------|
| Javier Mendez-Alvarez | Individual | Support | No |

Comments:

Please note that testimony submitted less than 24 hours prior to the hearing, improperly identified, or directed to the incorrect office, may not be posted online or distributed to the committee prior to the convening of the public hearing.

Do not reply to this email. This inbox is not monitored. For assistance please email webmaster@capitol.hawaii.gov