



STATE OF HAWAII
BOARD OF EDUCATION
P.O. BOX 2360
HONOLULU, HAWAII 96804

Senate Committee on Ways and Means
Senator Michael Y. Ige, Chairperson
Senator Michelle N. Kidani, Vice Chairperson

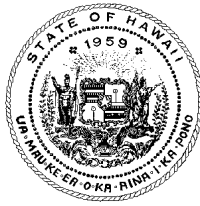
Thursday, February 21, 2013
9:00 a.m.
Hawai'i State Capitol, Room 211

Testimony of Don G. Horner, Chairperson

Testimony in SUPPORT of the INTENT of SB 1095 SD 1, Relating to Early Childhood Education.

Thank you for the opportunity to submit testimony. The Board of Education supports early childhood education as we recognize the importance of establishing a quality early learning system which supports the future success of Hawaii's children.

Thank you for the opportunity to provide testimony in support of SB 1095 SD 1.



STATE OF HAWAII
DEPARTMENT OF PUBLIC SAFETY
919 Ala Moana Boulevard, 4th Floor
Honolulu, Hawaii 96814

COMMENTS ON SENATE BILL (SB) 1095, SENATE DRAFT (SD)1
RELATING TO
EARLY CHILDHOOD EDUCATION

by
Ted Sakai, Director
Department of Public Safety

Senate Committee on Ways and Means
Senator David Y. Ige, Chair
Senator Michelle N. Kidani, Vice Chair

Thursday, February 21, 2013; 9:00 a.m.
State Capitol, Room 211

Chair Ige, Vice Chair Kidani, and Members of the Committee:

The Department of Public Safety (PSD) is in **support** of SB1095, SD1, establishing the Early Childhood Education Program within the Early Learning System.

Every year PSD submits a report to the U.S. National Reporting System regarding the Educational Functioning Level of incarcerated offenders voluntarily receiving educational services testing. In FY 2012, the report reflected 568 offenders (21%) functioning at an educational level of third grade or less (Adult Basic Education I), 858 (32 %) at fourth to fifth grade level (Adult Basic Education II), 508 (19%) at six to eighth grade level (Adult Basic Education III), 391 (15%) at eight to tenth grade level (Adult Basic Education IV), and 322 (12%) at tenth grade or higher functioning level.

PSD acknowledges that by providing opportunities for quality early childhood education, children are more likely to achieve higher levels of educational attainment and grow into successful contributing members of the community as adults. On the other hand, the lack of this foundation is associated with negative indicators, such as criminality and incarceration.

Thank you for the opportunity to present this testimony.



February 21, 2013

The Senate
The Twenty-Seventh Legislature, 2013
State of Hawai'i

Senator David Ige, Chair
Senator Michelle Kidani, Vice Chair

TIME: 9:00 AM
PLACE: Room 211
Hawai'i State Capitol

FROM: The Early Learning Advisory Board

RE: SENATE BILL 1095, HD1, RELATING TO EARLY CHILDHOOD EDUCATION

Thank you for this opportunity to testify on Senate Bill 1095, House Draft 1. The Early Learning Advisory Board would like to offer testimony in support of SB 1095, HD1, and the Legislature's efforts to enhance early education opportunities across the state.

Established under Act 178 (2012), the Early Learning Advisory Board replaced the Early Learning Council and is responsible for advising the Executive Office on Early Learning, providing recommendations to the Executive Office on Early Learning, promoting collaboration across agencies, and being an independent voice for the overall well-being of Hawai'i's children.

SB 1095, HD1, establishes the Early Childhood Education Program within the Early Learning System. The Program is effective upon the ratification of the proposed constitutional amendment permitting public funds for private early childhood education programs (SB 853).

The Early Childhood Education Program is a full-scale program that will both expand service to Hawai'i's children and incorporate higher standards for curriculum, assessment, and teacher quality. The Program will further be able to hold education providers accountable for maintaining these standards and achieving educational outcomes. By focusing on the social-emotional development as well as the intellectual development of our children, the Early Childhood Education Program provides an incredible foundation for children to build upon.

We strongly support advancing this bill and look forward to working collaboratively and proactively with the legislature and the broader community. Thank you for the opportunity to testify.

Respectfully Submitted,

Dr. Robert Peters
Early Learning Advisory Board



LATE

COMMUNITY CHILDREN'S COUNCIL OF HAWAII
1177 Alakea Street • B-100 • Honolulu • HI • 96813
TEL: (808) 586-5363 • TOLL FREE: 1-800-437-8641 • FAX: (808) 586-5366

February 20, 2013

RE: SB 1095, SD 1 – Relating to Early Childhood Education

Dear Senator David Y. Ige and Senator Kidani Vice-Chair Kidani and Members of the Committee,

The Community Children's Councils (CCC's) **strongly supports** the comments of The Autism Society of Hawaii and the Special Education Advisory Council in regards to SB 1095, SD 1 that establishes the Early Childhood Education Program.

The CCC's **strongly suggests:**

The 17 CCCs believes that all children, with and without disabilities, benefit from quality, early learning programs that address their unique needs and help prepare these keiki for academic and socially success. SB 1095, SD 1 will be crucial in expanding quality programs by requiring contracted practices and to align their curriculum with the Hawaii Early Learning and Developmental Standards and the Common Core State Standards for Kindergarten through twelfth grade. The bill will also address the need to enhance the skills of early learning providers by requiring training in early childhood education or child development.

These new educational resources for young children will expand the options for young children with disabilities to be educated with their non-disabled peers. They may also reduce the need for some special education services in succeeding years by intervening early with effective interventions when children struggle with academic and socio-emotional goals.

The 17 CCCs are community-based bodies comprised of parents, professionals in both public and private agencies and other interested persons who are concerned with specialized services provided to Hawaii's students. Membership is diverse, voluntary and advisory in nature. The CCCs are in rural and urban communities organized around the Complexes in the Department of Education.

Should you have any questions or need additional information, please contact the Community Children's Council Office (CCCO) at 586-5363.

Thank you for considering our testimony,
Tom Smith, Co-Chair

Jessica Wong-Sumida, Co-Chair

(Original signatures are on file with the CCCO)



February 21, 2013
9:00 a.m.
Conference Room 211

TESTIMONY TO
THE SENATE COMMITTEE ON WAYS AND MEANS

RE: SB 1095 SD1 – Relating to Early Childhood Education

Chair Ige, Vice Chair Kidani and members of the committee,

My name is Robert Witt and I am executive director of the Hawaii Association of Independent Schools (HAIS), which represents 99 private and independent schools in Hawaii and educates over 33,000 students statewide.

HAIS supports SB1095 SD1 which establishes an early childhood education program, administered by the Executive Office on Early Learning, to prepare children for school and provide access to high quality early childhood education. This program will serve children ages three to four years of age with a priority for four year old children.

Research shows that children who participate in early childhood education programs are more likely to succeed in kindergarten and beyond. Studies demonstrate that such programs are especially effective for at-risk children. These programs have the potential to alter at-risk children's lifetime trajectories for success. High quality early childhood education programs have immediate and long term benefits not only for the children, but also for the societies in which they live. Thus, it is important to have a statewide early childhood education program and we strongly urge you to pass SB1095 SD1.

Thank you for the opportunity to testify.



841 Bishop St., Suite 301
Honolulu, Hawaii 96813

Telephone: 808 926-1530
Contact@HEECoalition.org



Senate Committee on Ways and Means
Senator David Ige, Chair
Senator Michelle Kidani, Vice Chair

February 21, 2013

Dear Chair Ige, Vice Chair Kidani, and Committee Members:

This testimony is submitted in support for SB1095 SD1, establishing a statewide early childhood education program.

The Hui for Excellence in Education (HE'E) is a diverse coalition of over 40 parent and community organizations dedicated to improving student achievement by increasing family and community engagement and partnerships in our schools. Our member list is attached.

The Coalition supports the establishment of a statewide early childhood education program and the financial appropriation to support the program. As we support the school readiness program, proposed in SB1093, which gives priority to the late born four-year-olds that will not be able to attend Junior Kindergarten from the 2014-2015 school year, we also support the early childhood education program, expanding the program to three- and four-year-old children, and targeting the underserved and at-risk children. We also applaud the effort to align content and performance standards of the early childhood education program with those of the K-12 system to allow for a consistent and high-quality educational experience for children.

We also continue to recommend the development and implementation of an outreach program to preschools and families to assure a seamless transition to the new system being proposed in this bill.

Thank you for the opportunity to testify and for your consideration.

Our support of this bill represents a 75% consensus or more of our membership.

Sincerely,

Cheri Nakamura
HE'E Coalition Director

HE'E Member List

Academy 21
After-School All-Stars Hawaii
Alliance for Place Based Learning
*Castle Complex Community Council
Center for Civic Education
Coalition for Children with Special Needs
*DOE Windward District
*Faith Action for Community Equity
Fresh Leadership LLC
Girl Scouts Hawaii
*Good Beginnings Alliance
Harold K.L. Castle Foundation
*Hawaii Appleseed Center for Law and Economic Justice
Hawai'i Athletic League of Scholars
*Hawai'i Charter School Network
*Hawai'i Education Matters
*Hawai'i Nutrition and Physical Activity Coalition
*Hawaii State PTSA
Hawai'i State Student Council
Hawai'i State Teachers Association
Hawai'i P-20
Hawai'i 3Rs
Head Start Collaboration Office
It's All About Kids
*INPEACE
Joint Venture Education Forum
Kamehameha Schools
*Kanu Hawai'i
Kupu A'e
*Leaders for the Next Generation
McREL's Pacific Center for Changing the Odds
*Our Public School
*Pacific Resources for Education and Learning
*Parents and Children Together
*Parents for Public Schools Hawai'i
Punahou School PUEO Program
Teach for America
The Learning Coalition

US PACOM

University of Hawai'i College of Education
YMCA of Honolulu
Voting Members (*)

LATE



February 21, 2013

To: Senator David Ige, Chair
Senator, Michelle Kidani, Vice-Chair
Senate Committee on Ways and Means

From: Deborah Zysman, Executive Director
Good Beginnings Alliance

RE: Comments in support of SB 1095 SD1: Relating to Early Childhood Education; SB 1084: Proposing an Amendment to Article X, Section 1, of the Hawaii State Constitution to Permit the Appropriation of Public Funds for Private Early Childhood Education Programs.

The Good Beginnings Alliance is in support of SB 1095 SD1: Relating to Early Childhood Education and SB 1084: Proposing an Amendment to Article X, Section 1, of the Hawaii State Constitution to Permit the Appropriation of Public Funds for Private Early Childhood Education Programs. The Good Beginnings Alliance (GBA) is a policy and advocacy organization focused on ensuring that Hawaii's young children are healthy, safe, and ready for school. We strive to support our stakeholder community to this end, as well as provide relevant information to our families and fellow advocate community. The GBA has over a decade of experience in advocacy and service to our youngest and their families.

Last year the Legislature passed, and the Governor signed into law, legislation creating the Executive Office on Early Learning (EOEL)(Act 178; 2012). That measure also called for the termination of the existing Department of Education's Junior Kindergarten program starting in the 2014-2015 school year; a pre-Kindergarten program available to late-born four-year-olds that currently serves over 5,000 children statewide.

SB 1095 SD1, would provide crucial direction in the creation of Hawaii's early childhood education program by:

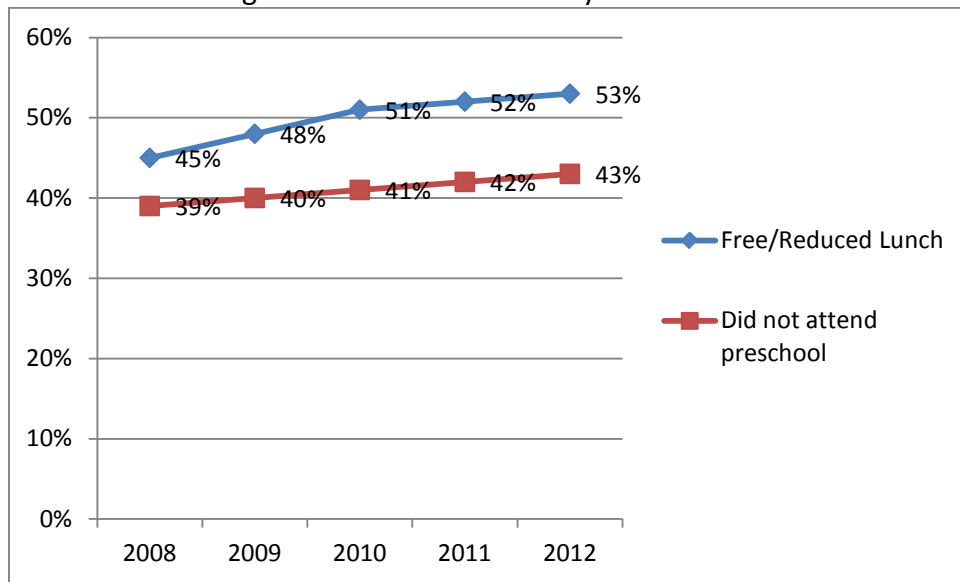
- Ensuring parent choice in selecting a school readiness program that best serves the child.
- Investing in our existing, and future, early learning/school readiness providers.
- Prioritizing both underserved and at-risk children.
- Providing assistance for middle-income, 'gap group', families of four year olds.

- Tasking the EOEL with developing and adopting standards for participating programs that will ensure qualified instruction and data collection.

By providing the EOEL authority to direct the State’s Early Childhood Education Program, we hope that they will take great effort to ensure that a range of providers are allowed to participate in the program, including center-based, school-based, family-child interaction learning programs, and family child care homes. By ensuring this breadth of service we can guarantee service to a greater number of families across our state. Including different types of providers can also address the need to increase the capacity that can be expected with the implementation of the new school readiness program.

Hawaii is one of only eleven states providing no significant state funding for early childhood education programs. This coupled with nearly 43% of our students not having received preschool upon entering Kindergarten means that our Department of Education (DOE) system must devote time and resources to bringing these children up to speed with their counterparts who have received some form of school readiness programing.

It should be noted that over the past four years our state has seen a decrease in the number of children entering Kindergarten having had preschool, and at the same time we see an increase in the number of students receiving free/reduced lunch. Providing the extra support to families in order to send their four-year-olds to a school readiness program will hopefully help address this trend and allow families greater economic flexibility.



1. 43% of students did not attend preschool prior to entering the HDOE system in the 2012-2013 school year. This percentage has steadily declined annually by 1% from 2008 to 2012 (HSSRA 2012-2013).
2. 53% of students received Free/Reduced Lunch (FRL) in the 2012-2013 school year. This is an increase of 1% when comparing to the previous school year.

Investing in a quality early childhood education program positions Hawaii to gain from federal matching funds that may become available as a result of the Obama Administration's new initiative to provide high-quality preschool for low- and middle-class families. The Administration is seeking to develop a new federal-state partnership that will provide incentives for states to broaden participation in their public preschool program.

We also see the critical mass of public and private support focused on this effort like never before. A June 2012 Ward Research Poll commissioned by the Good Beginnings Alliance and the Be My Voice Hawaii campaign showed that 75% of registered voters surveyed supported some form of state supported preschool program for all four-year-olds, and nearly 50% supported some form of new revenue specifically dedicated for this purpose.

Members of the business, philanthropic, labor, and education community have also demonstrated a commitment to working together to build an early learning system that provides our keiki with the educational edge to compete with their counterparts in other states on the mainland. As the recent 'Power of Preschool' publication in the January 2013 issue of *Hawaii Business Magazine* indicated, employers see a strong state supported preschool system as a key mechanism for creating the future workforce that the state depends on, as well as a way to attract new businesses to our island economy.

GBA supports SB 1095 SD1, and SB 1084, as the first steps toward bringing about the ultimate goal of a high quality early childhood education program that will serve all of Hawaii's four-year-old children.



For over 100 years,
preparing children for success

2707 South King Street
Honolulu, Hawaii 96826

Phone: (808) 941-9414
Fax: (808) 946-1468

www.kcaapreschools.org



February 20, 2013

To: Senator David Y. Ige, Chair, Chair
Senator Michelle N. Kidani, Vice Chair
Senate Committee on Ways and Means

From: Christina Cox, President
KCAA Preschools of Hawaii

Subject: SB1095 SD1 Relating to Early Childhood Education

KCAA Preschools of Hawaii was established in 1895 by the Woman's Board of Missions to serve the children of immigrant workers. We serve over 900 children per year in 7 NAEYC accredited preschools on Oahu. More than 50% of our students are low-income and over 80% go on to attend DOE elementary schools. We manage tuition subsidies from 7 different sources, each with its own set of requirements. We have a \$7 million annual operating budget with 130 employees. KCAA has just completed the construction of a \$3.2 million professional development center for early educators, Hawaii's first! It is located on our Mother Rice property in Moiliili. The Harry & Jeanette Weinberg Center for Early Education and Development is funded exclusively by private businesses and Hawaii's dedicated philanthropic community. KCAA's Board was instrumental in this effort and is committed to working with the early childhood community to increase the number of qualified teachers, to improve their practice and to improve outcomes for Hawaii's *keiki*.

Please note that while I presently serve as the center-based program provider representative on the Early Learning Advisory Board and also serve as the Liaison for the Childcare Business Coalition of Hawaii which represents more than 60 centers throughout the State I am testifying in support of the intent of this measure today as the President of KCAA Preschools of Hawaii, a position that I have held for the past 12 years.

So much has changed during my 30 years working in the field of early education in Hawaii. It used to be that having teachers who genuinely enjoyed working with young children and who possessed a joy of learning, a natural curiosity about the world and were willing to share that with the children in their care, was enough. We now need to be sure that our teachers possess not only those important characteristics, but also the knowledge and skills required to help our children compete in the 21st Century.

We now know that 85% of a child's brain develops in the first few years of life and that there are critical experiences we should provide a young child with in order to optimize growth and development.

ATHERTON - KAILUA

KUAPA - HAWAII KAI

LAURA MORGAN - KAPALAMA HEIGHTS

MOTHER RICE - MOILIILI

MURIEL - KAKAOKO

NA LEI - KALIHI

WAI-KAHALA - KAHALA



- Early experiences have a decisive impact on the actual architecture of the brain and on the nature and extent of adult capacities.
- By the time children from middle-income families are in 3rd grade they know about 12,000 words compared to low income children who know just 4,000 words, one third as many as their peers. This gap begins in the early years and research has repeatedly confirmed that early education makes all the difference in school success.

We applaud the state for designing a plan that is based on public/private partnerships and one that maximizes existing resources, including facilities and expertise, which presently exist within the private sector. We look forward to working in partnership with the Executive Office of Early Learning to that end.

We will need to pay special attention to the nuts and bolts of this program design if it is to achieve its goal. Research has repeatedly shown that the best ROI occurs when specific quality components are incorporated into the design and when adequate resources, both human and financial, are provided to programs to enable them to offer a high quality program to help our *keiki* get a great start in school and in life.

Currently, few public or private early education programs in Hawaii have the capacity to deliver the level of quality defined in the draft program standards. It is going to require an unwavering commitment from all parties involved, to help ensure that we have a program that delivers on the promise we are making to our children and our families.

When all is said and done we need to join together, to find some common ground and to see our children as an investment rather an expense.

Thank you for the opportunity to testify on this measure.



From: [Angeline Geldhof](#)
To: [WAM Testimony](#)
Subject: *****SPAM***** In Support of SB 1084, 1093 and 1095
Date: Wednesday, February 20, 2013 10:57:47 AM

Angeline Geldhof from Waikoloa, HI writes:

To: Senator David Ige, Chair; Senator Michelle N. Kidani, Vice-Chair; Senate Committee on Ways and Means Re: SBs 1084, 1093, and 1095, RELATING TO EARLY CHILDHOOD EDUCATION and SCHOOL READINESS. Honorable Chair Ige & Committee Members: Thank you for allowing me to submit testimony in support of Senate Bills 1084, 1093, and 1095. All three of these measures are critical to ensuring that Hawaii's four-year-olds will have the quality early learning experience they deserve. These measures are important to me because a statewide early childhood education program would not only prepare children for school, but it would also foster exceptional physical and emotional development. These factors, altogether, are key components in producing healthy, capable, and contributing adults. Many studies have proven that high-quality early childhood education programs have both short- and long-term benefits for children, individuals, and society as a whole. SB1093 and SB 1095 would provide parents with more access to these essential programs and also have the potential to alleviate financial burdens associated with early childhood education costs; currently families in Hawaii pay on average \$720/month per child for preschool. It is important to secure a solid foundation for our children in order to ensure a more successful, healthy, and promising future for us all. Thank you for the opportunity to submit testimony in support of SBs 1084, 1093, and 1095.

Form Data:

Email 1 (Primary): angeline@hawaiiimontessori.org

First Name: Angeline

Last Name: Geldhof

City: Waikoloa
State: HI
ZIP Code: 96738



From: [Annie Okazaki](#)
To: [WAM Testimony](#)
Subject: *****SPAM***** In Support of SB 1084, 1093 and 1095
Date: Wednesday, February 20, 2013 1:13:22 PM

Annie Okazaki from Aiea, HI writes:

To: Senator David Ige, Chair; Senator Michelle N. Kidani, Vice-Chair; Senate Committee on Ways and Means Re: SBs 1084, 1093, and 1095, RELATING TO EARLY CHILDHOOD EDUCATION and SCHOOL READINESS. Honorable Chair Ige & Committee Members: Thank you for allowing me to submit testimony in support of Senate Bills 1084, 1093, and 1095. All three of these measures are critical to ensuring that Hawaii's four-year-olds will have the quality early learning experience they deserve. These measures are important to me because a statewide early childhood education program would not only prepare children for school, but it would also foster exceptional physical and emotional development. These factors, altogether, are key components in producing healthy, capable, and contributing adults. Many studies have proven that high-quality early childhood education programs have both short- and long-term benefits for children, individuals, and society as a whole. SB1093 and SB 1095 would provide parents with more access to these essential programs and also have the potential to alleviate financial burdens associated with early childhood education costs; currently families in Hawaii pay on average \$720/month per child for preschool. It is important to secure a solid foundation for our children in order to ensure a more successful, healthy, and promising future for us all. Thank you for the opportunity to submit testimony in support of SBs 1084, 1093, and 1095.

Form Data:

Email 1 (Primary): kinguhma@gmail.com

First Name: Annie

Last Name: Okazaki

City: Aiea
State: HI
ZIP Code: 96701



From: [Aurelia Sanchez](#)
To: [WAM Testimony](#)
Subject: *****SPAM***** In Support of SB 1084, 1093 and 1095
Date: Wednesday, February 20, 2013 11:03:45 AM

Aurelia Sanchez from Waipahu, HI writes:

To: Senator David Ige, Chair; Senator Michelle N. Kidani, Vice-Chair; Senate Committee on Ways and Means Re: SBs 1084, 1093, and 1095, RELATING TO EARLY CHILDHOOD EDUCATION and SCHOOL READINESS. Honorable Chair Ige & Committee Members: Thank you for allowing me to submit testimony in support of Senate Bills 1084, 1093, and 1095. All three of these measures are critical to ensuring that Hawaii's four-year-olds will have the quality early learning experience they deserve. These measures are important to me because a statewide early childhood education program would not only prepare children for school, but it would also foster exceptional physical and emotional development. These factors, altogether, are key components in producing healthy, capable, and contributing adults. Many studies have proven that high-quality early childhood education programs have both short- and long-term benefits for children, individuals, and society as a whole. SB1093 and SB 1095 would provide parents with more access to these essential programs and also have the potential to alleviate financial burdens associated with early childhood education costs; currently families in Hawaii pay on average \$720/month per child for preschool. It is important to secure a solid foundation for our children in order to ensure a more successful, healthy, and promising future for us all. Thank you for the opportunity to submit testimony in support of SBs 1084, 1093, and 1095.

Form Data:

Email 1 (Primary): srmaureliaop@yahoo.com

First Name: Aurelia

Last Name: Sanchez

City: Waipahu
State: HI
ZIP Code: 96769



From: [Catherine Awong](#)
To: [WAM Testimony](#)
Subject: In Support of SB 1084, 1093 and 1095
Date: Wednesday, February 20, 2013 9:32:37 AM

Catherine Awong from Mililani, HI writes:

To: Senator David Ige, Chair; Senator Michelle N. Kidani, Vice-Chair; Senate Committee on Ways and Means Re: SBs 1084, 1093, and 1095, RELATING TO EARLY CHILDHOOD EDUCATION and SCHOOL READINESS. Honorable Chair Ige & Committee Members: Thank you for allowing me to submit testimony in support of Senate Bills 1084, 1093, and 1095. All three of these measures are critical to ensuring that Hawaii's four-year-olds will have the quality early learning experience they deserve. These measures are important to me because a statewide early childhood education program would not only prepare children for school, but it would also foster exceptional physical and emotional development. These factors, altogether, are key components in producing healthy, capable, and contributing adults. Many studies have proven that high-quality early childhood education programs have both short- and long-term benefits for children, individuals, and society as a whole. SB1093 and SB 1095 would provide parents with more access to these essential programs and also have the potential to alleviate financial burdens associated with early childhood education costs; currently families in Hawaii pay on average \$720/month per child for preschool. It is important to secure a solid foundation for our children in order to ensure a more successful, healthy, and promising future for us all. Thank you for the opportunity to submit testimony in support of SBs 1084, 1093, and 1095.

Form Data:

Email 1 (Primary): mscat@sjcpmililani.org

First Name: Catherine

Last Name: Awong

City: Mililani
State: HI
ZIP Code: 96789



February 20, 2013
Hearing on Thursday, February 21, 2013 at 9 a.m.
Senate Education Ways and Means Committee
Conference Room 211
In support of SB 1095

To Whom It May Concern:

My name is Celia Chang Takahashi and I am an Early Childhood Professional and the mother of two young children.

I am writing this testimony to ask for your support of SB 1095, a bill for an act that will, upon its ratification, the amendment to Article X, Section 1, of the Hawaii State Constitution, by establishing a statewide early childhood education program consisting of providers of high-quality early childhood education to assist families in establishing a solid foundation for success in school so that children graduate from high school prepared for college and a career.

I am fortunate enough to have had the opportunity to have my daughters enrolled in quality early learning programs. My oldest was fortunate enough to attend a Kamehameha Preschool in Waianae and my youngest daughter is currently enrolled at Seagull Schools Kapolei. Both programs are NAEYC Accredited programs.

One of the cornerstones of a high quality program is having practitioners that are highly trained in all aspects of early learning (i.e., developmentally appropriate practice, social and emotional growth and development, importance of early screening, etc.).

However, Hawaii currently does not have the capacity to provide a plethora of professional development opportunities to meet the needs and learning styles of its early care and education workforce (i.e., campus based, online, conferences, workshops, trainings, etc.). And what is available is not consistently offered so that practitioners can continue their professional development in a timely, consistent manner (i.e., courses are

not offered every year, courses are only offered at one community college campus, web courses are not available, etc.) .

Another barrier is affordability. As a former college career counselor I know that many of the financial assistance opportunities are designed for full time students. Since many of our early care and education professional work full time this makes them ineligible for a variety of educational grants and scholarships.

If we are ever going to have an early learning system that is of the highest quality we need to make it so that our practitioners dreams of continuing their own education is not a dream but a reality.

The time to invest in our keiki is now and one of the best ways to do that is by investing in the continuing education and training of the professionals that care for them.

Thank you for the opportunity to submit testimony in support of SB 1095.



From: [Cheryl Tabaco](#)
To: [WAM Testimony](#)
Subject: In Support of SB 1084, 1093 and 1095
Date: Wednesday, February 20, 2013 5:06:41 PM

Cheryl Tabaco from Haiku, HI writes:

To: Senator David Ige, Chair; Senator Michelle N. Kidani, Vice-Chair; Senate Committee on Ways and Means Re: SBs 1084, 1093, and 1095, RELATING TO EARLY CHILDHOOD EDUCATION and SCHOOL READINESS. Honorable Chair Ige & Committee Members: Thank you for allowing me to submit testimony in support of Senate Bills 1084, 1093, and 1095. All three of these measures are critical to ensuring that Hawaii's four-year-olds will have the quality early learning experience they deserve. These measures are important to me because a statewide early childhood education program would not only prepare children for school, but it would also foster exceptional physical and emotional development. These factors, altogether, are key components in producing healthy, capable, and contributing adults. Many studies have proven that high-quality early childhood education programs have both short- and long-term benefits for children, individuals, and society as a whole. SB1093 and SB 1095 would provide parents with more access to these essential programs and also have the potential to alleviate financial burdens associated with early childhood education costs; currently families in Hawaii pay on average \$720/month per child for preschool. It is important to secure a solid foundation for our children in order to ensure a more successful, healthy, and promising future for us all. Thank you for the opportunity to submit testimony in support of SBs 1084, 1093, and 1095.

Form Data:

Email 1 (Primary): ctabaco001@hawaii.rr.com

First Name: Cheryl

Last Name: Tabaco

City: Haiku
State: HI
ZIP Code: 96708



From: [Christine House](#)
To: [WAM Testimony](#)
Subject: In Support of SB 1084, 1093 and 1095
Date: Wednesday, February 20, 2013 10:26:58 PM

Christine House from Kailua-Kona, HI writes:

To: Senator David Ige, Chair; Senator Michelle N. Kidani, Vice-Chair; Senate Committee on Ways and Means Re: SBs 1084, 1093, and 1095, RELATING TO EARLY CHILDHOOD EDUCATION and SCHOOL READINESS. Honorable Chair Ige & Committee Members: Thank you for allowing me to submit testimony in support of Senate Bills 1084, 1093, and 1095. All three of these measures are critical to ensuring that Hawaii's four-year-olds will have the quality early learning experience they deserve. These measures are important to me because a statewide early childhood education program would not only prepare children for school, but it would also foster exceptional physical and emotional development. These factors, altogether, are key components in producing healthy, capable, and contributing adults. Many studies have proven that high-quality early childhood education programs have both short- and long-term benefits for children, individuals, and society as a whole. SB1093 and SB 1095 would provide parents with more access to these essential programs and also have the potential to alleviate financial burdens associated with early childhood education costs; currently families in Hawaii pay on average \$720/month per child for preschool. It is important to secure a solid foundation for our children in order to ensure a more successful, healthy, and promising future for us all. Thank you for the opportunity to submit testimony in support of SBs 1084, 1093, and 1095.

Form Data:

Email 1 (Primary): curdlesthine@gmail.com

First Name: Christine

Last Name: House

City: Kailua-Kona
State: HI
ZIP Code: 96745



From: [Christy Ryan](#)
To: [WAM Testimony](#)
Subject: In Support of SB 1084, 1093 and 1095
Date: Wednesday, February 20, 2013 11:02:34 AM

Christy Ryan from Wahiawa, HI writes:

To: Senator David Ige, Chair; Senator Michelle N. Kidani, Vice-Chair; Senate Committee on Ways and Means Re: SBs 1084, 1093, and 1095, RELATING TO EARLY CHILDHOOD EDUCATION and SCHOOL READINESS. Honorable Chair Ige & Committee Members: Thank you for allowing me to submit testimony in support of Senate Bills 1084, 1093, and 1095. All three of these measures are critical to ensuring that Hawaii's four-year-olds will have the quality early learning experience they deserve. These measures are important to me because a statewide early childhood education program would not only prepare children like my daughter for school, but it would also foster exceptional physical and emotional development. These factors, altogether, are key components in producing healthy, capable, and contributing adults. Many studies have proven that high-quality early childhood education programs have both short- and long-term benefits for children, individuals, and society as a whole. SB1093 and SB 1095 would provide parents like me with more access to these essential programs and also have the potential to alleviate financial burdens associated with early childhood education costs; currently families in Hawaii pay on average \$720/month per child for preschool. It is important to secure a solid foundation for our children in order to ensure a more successful, healthy, and promising future for us all. Thank you for the opportunity to submit testimony in support of SBs 1084, 1093, and 1095.

Form Data:

Email 1 (Primary): christy.ryan@ricoh-usa.com

First Name: Christy

Last Name: Ryan

City: Wahiawa
State: HI
ZIP Code: 96786

From: [Chuck Larson](#)
To: [WAM Testimony](#)
Subject: *****SPAM***** In Support of SB 1084, 1093 and 1095
Date: Wednesday, February 20, 2013 11:44:15 AM



Chuck Larson from Kailua, HI writes:

To: Senator David Ige, Chair; Senator Michelle N. Kidani, Vice-Chair; Senate Committee on Ways and Means Re: SBs 1084, 1093, and 1095, RELATING TO EARLY CHILDHOOD EDUCATION and SCHOOL READINESS. Honorable Chair Ige & Committee Members: Thank you for allowing me to submit testimony in support of Senate Bills 1084, 1093, and 1095. All three of these measures are critical to ensuring that Hawaii's four-year-olds will have the quality early learning experience they deserve. These measures are important to me because a statewide early childhood education program would not only prepare children for school, but it would also foster exceptional physical and emotional development. These factors, altogether, are key components in producing healthy, capable, and contributing adults. Many studies have proven that high-quality early childhood education programs have both short- and long-term benefits for children, individuals, and society as a whole. SB1093 and SB 1095 would provide parents with more access to these essential programs and also have the potential to alleviate financial burdens associated with early childhood education costs; currently families in Hawaii pay on average \$720/month per child for preschool. It is important to secure a solid foundation for our children in order to ensure a more successful, healthy, and promising future for us all. Thank you for the opportunity to submit testimony in support of SBs 1084, 1093, and 1095.

Form Data:

Email 1 (Primary): seagull@aloha.com

First Name: Chuck

Last Name: Larson

City: Kailua
State: HI
ZIP Code: 96734



From: [Colin Hosking](#)
To: [WAM Testimony](#)
Subject: In Support of SB 1084, 1093 and 1095
Date: Wednesday, February 20, 2013 9:07:49 PM

Colin Hosking from Honolulu, HI writes:

To: Senator David Ige, Chair; Senator Michelle N. Kidani, Vice-Chair; Senate Committee on Ways and Means Re: SBs 1084, 1093, and 1095, RELATING TO EARLY CHILDHOOD EDUCATION and SCHOOL READINESS. Honorable Chair Ige & Committee Members: Thank you for allowing me to submit testimony in support of Senate Bills 1084, 1093, and 1095. All three of these measures are critical to ensuring that Hawaii's four-year-olds will have the quality early learning experience they deserve. These measures are important to me because a statewide early childhood education program would not only prepare children for school, but it would also foster exceptional physical and emotional development. These factors, altogether, are key components in producing healthy, capable, and contributing adults. Many studies have proven that high-quality early childhood education programs have both short- and long-term benefits for children, individuals, and society as a whole. SB1093 and SB 1095 would provide parents with more access to these essential programs and also have the potential to alleviate financial burdens associated with early childhood education costs; currently families in Hawaii pay on average \$720/month per child for preschool. It is important to secure a solid foundation for our children in order to ensure a more successful, healthy, and promising future for us all. Thank you for the opportunity to submit testimony in support of SBs 1084, 1093, and 1095.

Form Data:

Email 1 (Primary): colinhosking.ch@gmail.com

First Name: Colin

Last Name: Hosking

City: Honolulu
State: HI
ZIP Code: 96826

From: [Dana Constable](#)
To: [WAM Testimony](#)
Subject: In Support of SB 1084, 1093 and 1095
Date: Wednesday, February 20, 2013 8:26:06 PM



Dana Constable from Honolulu, HI writes:

To: Senator David Ige, Chair; Senator Michelle N. Kidani, Vice-Chair; Senate Committee on Ways and Means Re: SBs 1084, 1093, and 1095, RELATING TO EARLY CHILDHOOD EDUCATION and SCHOOL READINESS. Honorable Chair Ige & Committee Members: Thank you for allowing me to submit testimony in support of Senate Bills 1084, 1093, and 1095. All three of these measures are critical to ensuring that Hawaii's four-year-olds will have the quality early learning experience they deserve. These measures are important to me because a statewide early childhood education program would not only prepare children for school, but it would also foster exceptional physical and emotional development. These factors, altogether, are key components in producing healthy, capable, and contributing adults. Many studies have proven that high-quality early childhood education programs have both short- and long-term benefits for children, individuals, and society as a whole. SB1093 and SB 1095 would provide parents with more access to these essential programs and also have the potential to alleviate financial burdens associated with early childhood education costs; currently families in Hawaii pay on average \$720/month per child for preschool. It is important to secure a solid foundation for our children in order to ensure a more successful, healthy, and promising future for us all. Thank you for the opportunity to submit testimony in support of SBs 1084, 1093, and 1095.

Form Data:

Email 1 (Primary): dcons001@gmail.com

First Name: Dana

Last Name: Constable

City: Honolulu
State: HI
ZIP Code: 96813

From: [Dara Sullivan](#)
To: [WAM Testimony](#)
Subject: In Support of SB 1084, 1093 and 1095
Date: Wednesday, February 20, 2013 9:08:18 PM



Dara Sullivan from Haleiwa, HI writes:

To: Senator David Ige, Chair; Senator Michelle N. Kidani, Vice-Chair; Senate Committee on Ways and Means Re: SBs 1084, 1093, and 1095, RELATING TO EARLY CHILDHOOD EDUCATION and SCHOOL READINESS. Honorable Chair Ige & Committee Members: Thank you for allowing me to submit testimony in support of Senate Bills 1084, 1093, and 1095. All three of these measures are critical to ensuring that Hawaii's four-year-olds will have the quality early learning experience they deserve. These measures are important to me because a statewide early childhood education program would not only prepare children for school, but it would also foster exceptional physical and emotional development. These factors, altogether, are key components in producing healthy, capable, and contributing adults. Many studies have proven that high-quality early childhood education programs have both short- and long-term benefits for children, individuals, and society as a whole. SB1093 and SB 1095 would provide parents with more access to these essential programs and also have the potential to alleviate financial burdens associated with early childhood education costs; currently families in Hawaii pay on average \$720/month per child for preschool. It is important to secure a solid foundation for our children in order to ensure a more successful, healthy, and promising future for us all. Thank you for the opportunity to submit testimony in support of SBs 1084, 1093, and 1095.

Form Data:

Email 1 (Primary): shopchinadoll@gmail.com

First Name: Dara

Last Name: Sullivan

City: Haleiwa
State: HI
ZIP Code: 96712



From: [Jana Brown](#)
To: [WAM Testimony](#)
Subject: In Support of SB 1084, 1093 and 1095
Date: Wednesday, February 20, 2013 9:18:49 AM

Jana Brown from Kahului, HI writes:

To: Senator David Ige, Chair; Senator Michelle N. Kidani, Vice-Chair; Senate Committee on Ways and Means Re: SBs 1084, 1093, and 1095, RELATING TO EARLY CHILDHOOD EDUCATION and SCHOOL READINESS. Honorable Chair Ige & Committee Members: Thank you for allowing me to submit testimony in support of Senate Bills 1084, 1093, and 1095. All three of these measures are critical to ensuring that Hawaii's four-year-olds will have the quality early learning experience they deserve. These measures are important to me because a statewide early childhood education program would not only prepare children for school, but it would also foster exceptional physical and emotional development. These factors, altogether, are key components in producing healthy, capable, and contributing adults. Many studies have proven that high-quality early childhood education programs have both short- and long-term benefits for children, individuals, and society as a whole. SB1093 and SB 1095 would provide parents with more access to these essential programs and also have the potential to alleviate financial burdens associated with early childhood education costs; currently families in Hawaii pay on average \$720/month per child for preschool. It is important to secure a solid foundation for our children in order to ensure a more successful, healthy, and promising future for us all. Thank you for the opportunity to submit testimony in support of SBs 1084, 1093, and 1095.

Form Data:

Email 1 (Primary): jana@mfss.org

First Name: Jana

Last Name: Brown

City: Kahului
State: HI
ZIP Code: 96793



From: [Jesse Rabot](#)
To: [WAM Testimony](#)
Subject: *****SPAM***** In Support of SB 1084, 1093 and 1095
Date: Wednesday, February 20, 2013 2:06:01 PM

Jesse Rabot from Kapaa, HI writes:

To: Senator David Ige, Chair; Senator Michelle N. Kidani, Vice-Chair; Senate Committee on Ways and Means Re: SBs 1084, 1093, and 1095, RELATING TO EARLY CHILDHOOD EDUCATION and SCHOOL READINESS. Honorable Chair Ige & Committee Members: Thank you for allowing me to submit testimony in support of Senate Bills 1084, 1093, and 1095. All three of these measures are critical to ensuring that Hawaii's four-year-olds will have the quality early learning experience they deserve. These measures are important to me because a statewide early childhood education program would not only prepare children for school, but it would also foster exceptional physical and emotional development. These factors, altogether, are key components in producing healthy, capable, and contributing adults. Many studies have proven that high-quality early childhood education programs have both short- and long-term benefits for children, individuals, and society as a whole. SB1093 and SB 1095 would provide parents with more access to these essential programs and also have the potential to alleviate financial burdens associated with early childhood education costs; currently families in Hawaii pay on average \$720/month per child for preschool. It is important to secure a solid foundation for our children in order to ensure a more successful, healthy, and promising future for us all. Thank you for the opportunity to submit testimony in support of SBs 1084, 1093, and 1095.

Form Data:

Email 1 (Primary): jmrabot@hawaii.rr.com

First Name: Jesse

Last Name: Rabot

City: Kapaa
State: HI
ZIP Code: 96746



From: [Karyn Clay](#)
To: [WAM Testimony](#)
Subject: *****SPAM***** In Support of SB 1084, 1093 and 1095
Date: Wednesday, February 20, 2013 11:20:15 AM

Karyn Clay from Kamuela, HI writes:

To: Senator David Ige, Chair; Senator Michelle N. Kidani, Vice-Chair; Senate Committee on Ways and Means Re: SBs 1084, 1093, and 1095, RELATING TO EARLY CHILDHOOD EDUCATION and SCHOOL READINESS. Honorable Chair Ige & Committee Members: Thank you for allowing me to submit testimony in support of Senate Bills 1084, 1093, and 1095. All three of these measures are critical to ensuring that Hawaii's four-year-olds will have the quality early learning experience they deserve. These measures are important to me because a statewide early childhood education program would not only prepare children for school, but it would also foster exceptional physical and emotional development. These factors, altogether, are key components in producing healthy, capable, and contributing adults. Many studies have proven that high-quality early childhood education programs have both short- and long-term benefits for children, individuals, and society as a whole. SB1093 and SB 1095 would provide parents with more access to these essential programs and also have the potential to alleviate financial burdens associated with early childhood education costs; currently families in Hawaii pay on average \$720/month per child for preschool. It is important to secure a solid foundation for our children in order to ensure a more successful, healthy, and promising future for us all. Thank you for the opportunity to submit testimony in support of SBs 1084, 1093, and 1095.

Form Data:

Email 1 (Primary): karynbclay@aol.com

First Name: Karyn

Last Name: Clay

City: Kamuela
State: HI
ZIP Code: 96743



LATE

From: [Kathleen Reinhardt](#)
To: [WAM Testimony](#)
Subject: In Support of SB 1084, 1093 and 1095
Date: Wednesday, February 20, 2013 7:55:39 PM

Kathleen Reinhardt from Honolulu, HI writes:

To: Senator David Ige, Chair; Senator Michelle N. Kidani, Vice-Chair; Senate Committee on Ways and Means Re: SBs 1084, 1093, and 1095, RELATING TO EARLY CHILDHOOD EDUCATION and SCHOOL READINESS. Honorable Chair Ige & Committee Members: Thank you for allowing me to submit testimony in support of Senate Bills 1084, 1093, and 1095. All three of these measures are critical to ensuring that Hawaii's four-year-olds will have the quality early learning experience they deserve. These measures are important to me because a statewide early childhood education program would not only prepare children for school, but it would also foster exceptional physical and emotional development. These factors, altogether, are key components in producing healthy, capable, and contributing adults. Many studies have proven that high-quality early childhood education programs have both short- and long-term benefits for children, individuals, and society as a whole. SB1093 and SB 1095 would provide parents with more access to these essential programs and also have the potential to alleviate financial burdens associated with early childhood education costs; currently families in Hawaii pay on average \$720/month per child for preschool. It is important to secure a solid foundation for our children in order to ensure a more successful, healthy, and promising future for us all. Thank you for the opportunity to submit testimony in support of SBs 1084, 1093, and 1095.

Form Data:

Email 1 (Primary): kathier808@aol.com

First Name: Kathleen

Last Name: Reinhardt

City: Honolulu
State: HI
ZIP Code: 96821



From: [Larry Corpuz](#)
To: [WAM Testimony](#)
Subject: In Support of SB 1084, 1093 and 1095
Date: Wednesday, February 20, 2013 8:26:09 PM

Larry Corpuz from Waipahu, HI writes:

To: Senator David Ige, Chair; Senator Michelle N. Kidani, Vice-Chair; Senate Committee on Ways and Means Re: SBs 1084, 1093, and 1095, RELATING TO EARLY CHILDHOOD EDUCATION and SCHOOL READINESS. Honorable Chair Ige & Committee Members: Thank you for allowing me to submit testimony in support of Senate Bills 1084, 1093, and 1095. All three of these measures are critical to ensuring that Hawaii's four-year-olds will have the quality early learning experience they deserve. These measures are important to me because a statewide early childhood education program would not only prepare children for school, but it would also foster exceptional physical and emotional development. These factors, altogether, are key components in producing healthy, capable, and contributing adults. Many studies have proven that high-quality early childhood education programs have both short- and long-term benefits for children, individuals, and society as a whole. SB1093 and SB 1095 would provide parents with more access to these essential programs and also have the potential to alleviate financial burdens associated with early childhood education costs; currently families in Hawaii pay on average \$720/month per child for preschool. It is important to secure a solid foundation for our children in order to ensure a more successful, healthy, and promising future for us all. Thank you for the opportunity to submit testimony in support of SBs 1084, 1093, and 1095.

Form Data:

Email 1 (Primary): lec81949@hawaiiantel.net

First Name: Larry

Last Name: Corpuz

City: Waipahu
State: HI
ZIP Code: 96797



From: [Mark Ebert](#)
To: [WAM Testimony](#)
Subject: In Support of SB 1084, 1093 and 1095
Date: Wednesday, February 20, 2013 8:12:39 PM

Mark Ebert from Honolulu, HI writes:

To: Senator David Ige, Chair; Senator Michelle N. Kidani, Vice-Chair; Senate Committee on Ways and Means Re: SBs 1084, 1093, and 1095, RELATING TO EARLY CHILDHOOD EDUCATION and SCHOOL READINESS. Honorable Chair Ige & Committee Members: Thank you for allowing me to submit testimony in support of Senate Bills 1084, 1093, and 1095. All three of these measures are critical to ensuring that Hawaii's four-year-olds will have the quality early learning experience they deserve. These measures are important to me because a statewide early childhood education program would not only prepare children for school, but it would also foster exceptional physical and emotional development. These factors, altogether, are key components in producing healthy, capable, and contributing adults. Many studies have proven that high-quality early childhood education programs have both short- and long-term benefits for children, individuals, and society as a whole. SB1093 and SB 1095 would provide parents with more access to these essential programs and also have the potential to alleviate financial burdens associated with early childhood education costs; currently families in Hawaii pay on average \$720/month per child for preschool. It is important to secure a solid foundation for our children in order to ensure a more successful, healthy, and promising future for us all. Thank you for the opportunity to submit testimony in support of SBs 1084, 1093, and 1095.

Form Data:

Email 1 (Primary): mark.ebert@colorado.edu

First Name: Mark

Last Name: Ebert

City: Honolulu
State: HI
ZIP Code: 96817



From: [msity carver](#)
To: [WAM Testimony](#)
Subject: In Support of SB 1084, 1093 and 1095
Date: Wednesday, February 20, 2013 8:01:25 PM

msity carver from kailua kona, HI writes:

To: Senator David Ige, Chair; Senator Michelle N. Kidani, Vice-Chair; Senate Committee on Ways and Means Re: SBs 1084, 1093, and 1095, RELATING TO EARLY CHILDHOOD EDUCATION and SCHOOL READINESS. Honorable Chair Ige & Committee Members: Thank you for allowing me to submit testimony in support of Senate Bills 1084, 1093, and 1095. All three of these measures are critical to ensuring that Hawaii's four-year-olds will have the quality early learning experience they deserve. These measures are important to me because a statewide early childhood education program would not only prepare children for school, but it would also foster exceptional physical and emotional development. These factors, altogether, are key components in producing healthy, capable, and contributing adults. Many studies have proven that high-quality early childhood education programs have both short- and long-term benefits for children, individuals, and society as a whole. SB1093 and SB 1095 would provide parents with more access to these essential programs and also have the potential to alleviate financial burdens associated with early childhood education costs; currently families in Hawaii pay on average \$720/month per child for preschool. It is important to secure a solid foundation for our children in ordered to ensure a more successful, healthy, and promising future for us all. Thank you for the opportunity to submit testimony in support of SBs 1084, 1093, and 1095.

Form Data:

Email 1 (Primary): mnoelanileong@aol.com

First Name: msity

Last Name: carver

City: kailua kona
State: HI
ZIP Code: 96740



From: [Nohea Lelewi](#)
To: [WAM Testimony](#)
Subject: *****SPAM***** In Support of SB 1084, 1093 and 1095
Date: Wednesday, February 20, 2013 10:10:28 AM

Nohea Lelewi from Kailua-Kona, HI writes:

To: Senator David Ige, Chair; Senator Michelle N. Kidani, Vice-Chair; Senate Committee on Ways and Means Re: SBs 1084, 1093, and 1095, RELATING TO EARLY CHILDHOOD EDUCATION and SCHOOL READINESS. Honorable Chair Ige & Committee Members: Thank you for allowing me to submit testimony in support of Senate Bills 1084, 1093, and 1095. All three of these measures are critical to ensuring that Hawaii's four-year-olds will have the quality early learning experience they deserve. These measures are important to me because a statewide early childhood education program would not only prepare children for school, but it would also foster exceptional physical and emotional development. These factors, altogether, are key components in producing healthy, capable, and contributing adults. Many studies have proven that high-quality early childhood education programs have both short- and long-term benefits for children, individuals, and society as a whole. SB1093 and SB 1095 would provide parents with more access to these essential programs and also have the potential to alleviate financial burdens associated with early childhood education costs; currently families in Hawaii pay on average \$720/month per child for preschool. It is important to secure a solid foundation for our children in order to ensure a more successful, healthy, and promising future for us all. Thank you for the opportunity to submit testimony in support of SBs 1084, 1093, and 1095.

Form Data:

Email 1 (Primary): nlelewi@fsswh.org

First Name: Nohea

Last Name: Lelewi

City: Kailua-Kona
State: HI
ZIP Code: 96740



February 20, 2013
Hearing on Thursday, February 21, 2013 at 9 a.m.
Senate Education Ways and Means Committee
Conference Room 211
In support of SB 1095

To Whom It May Concern:

My name is Phyllis Ida and I am a retired DOE Special Educator, and the former 619 Coordinator for the Windward District. I also over see the grant administration for the Windward District P-3 Demonstration Project that focuses on keiki reading on grade level by third grade, providing model program of seamless early learning experiences from early childhood programs through elementary school for young children in the Windward District.

I am writing this testimony to ask for your support of SB 1095, a bill for an act that will, upon its ratification, the amendment to Article X, Section 1, of the Hawaii State Constitution, by establishing a statewide early childhood education program consisting of providers of high-quality early childhood education to assist families in establishing a solid foundation for success in school so that children graduate from high school prepared for college and a career.

I would like to encourage the Legislature to recognize that high quality programs include practitioners that are highly trained in all aspects of early learning (i.e., developmentally appropriate practice, social and emotional growth and development, importance of early screening, etc.).

To have a staff comprised of highly trained early childhood professionals, there needs to be a variety of learning opportunities (i.e., campus based, online, conferences, workshops, trainings, etc.) made available to them, as well as access to financial assistance to non-traditional students. Currently a majority of scholarships and grants are for fulltime students, which excludes many of our early childhood professionals because they work full time. The inability to qualify for financial assistance means that

their desire to earn a higher degree is nothing more than a dream. If we are ever going to have an early learning system that is of the highest quality we need to make it so that our practitioners dreams of continuing their own education is not a dream but a reality.

Because accessible and affordable professional development is a vital component to high quality learning environments, **we would like to request that the parties involved continue to investigate providing a multitude of continuing education opportunities and financial aid opportunities for non-traditional students be investigated.** Only when this barrier is minimized or eliminated will we be able to move forward with quality education for our youngest residents.

The time to invest in our keiki, and the professionals that care for them is now.

Mahalo nui loa for the opportunity to submit testimony in support of SB 1095.



From: [Pilialoa Kalele](#)
To: [WAM Testimony](#)
Subject: In Support of SB 1084, 1093 and 1095
Date: Wednesday, February 20, 2013 2:44:06 PM

Pilialoa Kalele from Kailua-Kona, HI writes:

To: Senator David Ige, Chair; Senator Michelle N. Kidani, Vice-Chair; Senate Committee on Ways and Means Re: SBs 1084, 1093, and 1095, RELATING TO EARLY CHILDHOOD EDUCATION and SCHOOL READINESS. Honorable Chair Ige & Committee Members: Thank you for allowing me to submit testimony in support of Senate Bills 1084, 1093, and 1095. All three of these measures are critical to ensuring that Hawaii's four-year-olds will have the quality early learning experience they deserve. These measures are important to me because a statewide early childhood education program would not only prepare children for school, but it would also foster exceptional physical and emotional development. These factors, altogether, are key components in producing healthy, capable, and contributing adults. Many studies have proven that high-quality early childhood education programs have both short- and long-term benefits for children, individuals, and society as a whole. SB1093 and SB 1095 would provide parents with more access to these essential programs and also have the potential to alleviate financial burdens associated with early childhood education costs; currently families in Hawaii pay on average \$720/month per child for preschool. It is important to secure a solid foundation for our children in order to ensure a more successful, healthy, and promising future for us all. Thank you for the opportunity to submit testimony in support of SBs 1084, 1093, and 1095.

Form Data:

Email 1 (Primary): pilikalele@gmail.com

First Name: Pilialoa

Last Name: Kalele

City: Kailua-Kona
State: HI
ZIP Code: 96740



From: [Rachel Donahue](#)
To: [WAM Testimony](#)
Subject: In Support of SB 1084, 1093 and 1095
Date: Wednesday, February 20, 2013 7:49:20 PM

Rachel Donahue from Honolulu, HI writes:

To: Senator David Ige, Chair; Senator Michelle N. Kidani, Vice-Chair; Senate Committee on Ways and Means Re: SBs 1084, 1093, and 1095, RELATING TO EARLY CHILDHOOD EDUCATION and SCHOOL READINESS. Honorable Chair Ige & Committee Members: Thank you for allowing me to submit testimony in support of Senate Bills 1084, 1093, and 1095. All three of these measures are critical to ensuring that Hawaii's four-year-olds will have the quality early learning experience they deserve. These measures are important to me because a statewide early childhood education program would not only prepare children for school, but it would also foster exceptional physical and emotional development. These factors, altogether, are key components in producing healthy, capable, and contributing adults. Many studies have proven that high-quality early childhood education programs have both short- and long-term benefits for children, individuals, and society as a whole. SB1093 and SB 1095 would provide parents with more access to these essential programs and also have the potential to alleviate financial burdens associated with early childhood education costs; currently families in Hawaii pay on average \$720/month per child for preschool. It is important to secure a solid foundation for our children in order to ensure a more successful, healthy, and promising future for us all. Thank you for the opportunity to submit testimony in support of SBs 1084, 1093, and 1095.

Form Data:

Email 1 (Primary): racheld.msw@gmail.com

First Name: Rachel

Last Name: Donahue

City: Honolulu
State: HI
ZIP Code: 96817