



**From:** [Angeline Geldhof](#)  
**To:** [WAM Testimony](#)  
**Subject:** \*\*\*\*\*SPAM\*\*\*\*\* In Support of SB 1084, 1093 and 1095  
**Date:** Wednesday, February 20, 2013 10:57:47 AM

---

Angeline Geldhof from Waikoloa, HI writes:

To: Senator David Ige, Chair; Senator Michelle N. Kidani, Vice-Chair; Senate Committee on Ways and Means Re: SBs 1084, 1093, and 1095, RELATING TO EARLY CHILDHOOD EDUCATION and SCHOOL READINESS. Honorable Chair Ige & Committee Members: Thank you for allowing me to submit testimony in support of Senate Bills 1084, 1093, and 1095. All three of these measures are critical to ensuring that Hawaii's four-year-olds will have the quality early learning experience they deserve. These measures are important to me because a statewide early childhood education program would not only prepare children for school, but it would also foster exceptional physical and emotional development. These factors, altogether, are key components in producing healthy, capable, and contributing adults. Many studies have proven that high-quality early childhood education programs have both short- and long-term benefits for children, individuals, and society as a whole. SB1093 and SB 1095 would provide parents with more access to these essential programs and also have the potential to alleviate financial burdens associated with early childhood education costs; currently families in Hawaii pay on average \$720/month per child for preschool. It is important to secure a solid foundation for our children in order to ensure a more successful, healthy, and promising future for us all. Thank you for the opportunity to submit testimony in support of SBs 1084, 1093, and 1095.

-----  
Form Data:

Email 1 (Primary): [angeline@hawaiiimontessori.org](mailto:angeline@hawaiiimontessori.org)

First Name: Angeline

Last Name: Geldhof

City: Waikoloa  
State: HI  
ZIP Code: 96738



**From:** [Annie Okazaki](#)  
**To:** [WAM Testimony](#)  
**Subject:** \*\*\*\*\*SPAM\*\*\*\*\* In Support of SB 1084, 1093 and 1095  
**Date:** Wednesday, February 20, 2013 1:13:22 PM

---

Annie Okazaki from Aiea, HI writes:

To: Senator David Ige, Chair; Senator Michelle N. Kidani, Vice-Chair; Senate Committee on Ways and Means Re: SBs 1084, 1093, and 1095, RELATING TO EARLY CHILDHOOD EDUCATION and SCHOOL READINESS. Honorable Chair Ige & Committee Members: Thank you for allowing me to submit testimony in support of Senate Bills 1084, 1093, and 1095. All three of these measures are critical to ensuring that Hawaii's four-year-olds will have the quality early learning experience they deserve. These measures are important to me because a statewide early childhood education program would not only prepare children for school, but it would also foster exceptional physical and emotional development. These factors, altogether, are key components in producing healthy, capable, and contributing adults. Many studies have proven that high-quality early childhood education programs have both short- and long-term benefits for children, individuals, and society as a whole. SB1093 and SB 1095 would provide parents with more access to these essential programs and also have the potential to alleviate financial burdens associated with early childhood education costs; currently families in Hawaii pay on average \$720/month per child for preschool. It is important to secure a solid foundation for our children in order to ensure a more successful, healthy, and promising future for us all. Thank you for the opportunity to submit testimony in support of SBs 1084, 1093, and 1095.

-----  
Form Data:

Email 1 (Primary): kinguhma@gmail.com

First Name: Annie

Last Name: Okazaki

City: Aiea  
State: HI  
ZIP Code: 96701



**From:** [Aurelia Sanchez](#)  
**To:** [WAM Testimony](#)  
**Subject:** \*\*\*\*\*SPAM\*\*\*\*\* In Support of SB 1084, 1093 and 1095  
**Date:** Wednesday, February 20, 2013 11:03:45 AM

---

Aurelia Sanchez from Waipahu, HI writes:

To: Senator David Ige, Chair; Senator Michelle N. Kidani, Vice-Chair; Senate Committee on Ways and Means Re: SBs 1084, 1093, and 1095, RELATING TO EARLY CHILDHOOD EDUCATION and SCHOOL READINESS. Honorable Chair Ige & Committee Members: Thank you for allowing me to submit testimony in support of Senate Bills 1084, 1093, and 1095. All three of these measures are critical to ensuring that Hawaii's four-year-olds will have the quality early learning experience they deserve. These measures are important to me because a statewide early childhood education program would not only prepare children for school, but it would also foster exceptional physical and emotional development. These factors, altogether, are key components in producing healthy, capable, and contributing adults. Many studies have proven that high-quality early childhood education programs have both short- and long-term benefits for children, individuals, and society as a whole. SB1093 and SB 1095 would provide parents with more access to these essential programs and also have the potential to alleviate financial burdens associated with early childhood education costs; currently families in Hawaii pay on average \$720/month per child for preschool. It is important to secure a solid foundation for our children in order to ensure a more successful, healthy, and promising future for us all. Thank you for the opportunity to submit testimony in support of SBs 1084, 1093, and 1095.

-----  
Form Data:

Email 1 (Primary): srmaureliaop@yahoo.com

First Name: Aurelia

Last Name: Sanchez

City: Waipahu  
State: HI  
ZIP Code: 96769



STATE OF HAWAII  
BOARD OF EDUCATION  
P.O. BOX 2360  
HONOLULU, HAWAII 96804

**Senate Committee on Ways and Means**  
Senator Michael Y. Ige, Chairperson  
Senator Michelle N. Kidani, Vice Chairperson

Thursday, February 21, 2013  
9:00 a.m.  
Hawai'i State Capitol, Room 211

**Testimony of Don G. Horner, Chairperson**

**Testimony in SUPPORT of the INTENT of SB 1093 SD 1, Relating to School Readiness.**

Thank you for the opportunity to submit testimony. The Board of Education supports early childhood education as we recognize the importance of establishing a quality early learning system which supports the future success of Hawaii's children.

Thank you for the opportunity to provide testimony in support of SB 1093 SD 1.



February 21, 2013

The Senate  
The Twenty-Seventh Legislature, 2013  
State of Hawai'i

Senator David Ige, Chair  
Senator Michelle Kidani, Vice Chair

TIME: 9:00 AM  
PLACE: Room 211  
Hawai'i State Capitol

FROM: The Early Learning Advisory Board

RE: SENATE BILL 1093, SD1, RELATING TO SCHOOL READINESS

Thank you for this opportunity to testify on Senate Bill 1093, SD1. The Early Learning Advisory Board would like to offer testimony in support of SB 1093, SD1, and the Legislature's efforts to enhance early education opportunities across the state.

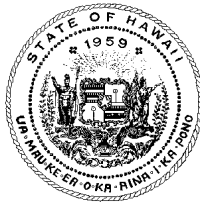
Established under Act 178 (2012), the Early Learning Advisory Board replaced the Early Learning Council and is responsible for advising the Executive Office on Early Learning, providing recommendations to the Executive Office on Early Learning, promoting collaboration across agencies, and being an independent voice for the overall well-being of Hawai'i's children.

SB 1093, SD1, establishes the School Readiness Program within the Early Learning System. School readiness is an important prerequisite for effective learning. The School Readiness Program will provide services to the estimated 5,100 children in the gap group that will result from the 2014 change in kindergarten entry age. This bill represents a significant and necessary step in establishing a comprehensive set of services that will foster a brighter future for Hawai'i's children.

We strongly support advancing this bill and look forward to working collaboratively and proactively with the legislature and the broader community. Thank you for the opportunity to testify.

Respectfully Submitted,

Dr. Robert Peters  
Early Learning Advisory Board



STATE OF HAWAII  
**DEPARTMENT OF PUBLIC SAFETY**  
919 Ala Moana Boulevard, 4th Floor  
Honolulu, Hawaii 96814

COMMENTS ON SENATE BILL (SB) 1093, SENATE DRAFT (SD) 1  
RELATING TO  
SCHOOL READINESS

by  
Ted Sakai, Director  
Department of Public Safety

Senate Committee on Ways and Means  
Senator David Y. Ige, Chair  
Senator Michelle N. Kidani, Vice Chair

Thursday, February 21, 2013; 9:00 a.m.  
State Capitol, Room 211

Chair Ige, Vice Chair Kidani, and Members of the Committee:

The Department of Public Safety (PSD) is in **support** of SB1093, SD1, the Governor's Initiative which establishes the school readiness program within the early learning system.

The link between school readiness and success in school is indisputable. The State must expend efforts to promote school readiness, especially in light of its expectation that kindergarten students master the grade-level common core state standards to develop the academic competencies and habits of mind necessary for college and career success.

Research shows that a child who is not ready for kindergarten is more likely to end up in the criminal justice system as an adult.

Every year PSD submits a report to the U.S. National Reporting System regarding the Educational Functioning Level of incarcerated offenders voluntarily receiving educational services testing. In FY 2012, the report reflected 568 offenders (21% ) functioning at an educational level of third grade or less (Adult Basic Education I), 858 (32 %) at fourth to fifth grade level (Adult Basic Education II), 508 (19%) at six to eighth

grade level (Adult Basic Education III), 391 (15%) at eight to tenth grade level (Adult Basic Education IV), and 322 (12%) at tenth grade or higher functioning level.

We strongly recommend that the State establish a readiness program consisting of providers of school readiness services to assist families in preparing their children for success in school, as a means of preventing future incarceration of individuals.

Thank you for the opportunity to present this testimony.

**LATE**

**Lā Ho'olohe Pila** (Hearing Date/Time): Thursday, February 21, 2013 9:00am  
**Lumi hālāwai** (Meeting Room) Conference Room 211  
**Kōmike** (Committee) Senate Ways and Means

**Pila** (Bill) SB1903: RELATING TO SCHOOL READINESS.  
**Kumu** (Purpose): Establishes the school readiness program within the early learning system.

**Mana'o** (Position): **KĀKO'O Me NĀ LOLI (SUPPORT WITH AMENDMENTS)**

Aloha e ka Lunaho'omalua 'o David Ige a me ka Hope Lunaho'omalua 'o Michelle Kidani a me nā lālā o ke Kōmike Kenekoa 'o Ways and Means

Aloha Chair David Ige and Vice-Chair Michelle Kidani and members of the Senate Committee on Ways and Means

'O au 'o 'Ekekela Aiona, ka Luna Ho'okele o ka 'Aha Pūnana Leo.  
My name is 'Ekekela Aiona, Executive Director, 'Aha Pūnana Leo.

Mahalo for giving me the opportunity to testify in support with amendments critical to programs conducted in the medium of the Hawaiian language. I provide (attached) the specific amendments needed to support Hawaiian medium early learning.

The 'Aha Pūnana Leo is the only statewide provider of early education care through the medium of Hawaiian. We are connected to a statewide P-20 Hawaiian Medium Education system. Our keiki are prepared to enter kindergarten and first grades taught through Hawaiian.

These amendments are necessary in establishing distinct school readiness needs of keiki in Hawaiian Medium Education to ensure that the unique linguistic advantages of an education through the medium of Hawaiian are realized.

Thank you for the opportunity to submit testimony.

Mahalo nui



'Aha Pūnana Leo seeks amendments to state initiatives on (1) School Readiness and (2) Early Childhood Education Program in the design and implementation of an integrated system of early learning and development program and services.

In this document, we seek to address Hawaiian language medium in the School Readiness Program bills; SB1093SD1 and companion bill HB862HD1.

SB1093S.D.1 & HB862H.D.1_School Readiness Program	'Aha Pūnana Leo Amendments	Rationale
<p>15 SECTION 2.  <u>"§302L- School readiness program. (a) There is established within the early learning system a school readiness program to be administered by the executive office on early learning. The school readiness program shall:</u>            (1) <u>Prepare children for school;</u></p>	<p>(1) Prepare children for school <b>through the medium of either of the two official languages of the state</b></p>	<ul style="list-style-type: none"> <li>•Hawai'i Constitution Official Languages Article XV Section 4.</li> <li>•'Aha Pūnana Leo established in 1983 E Ola Ka 'Ōlelo Hawai'i_the Hawaiian language shall live.</li> <li>•Hawaiian language is medium of instruction.</li> <li>• 'Aha Pūnana Leo is the only Hawaiian medium statewide provider serving 250 keiki, 11 months, full day at 11 centers on Hawai'i, Maui, Moloka'i, O'ahu and Kaua'i.</li> <li>•Hawai'i is a national and international leader, and has the most successful model of endangered, indigenous language revitalization.</li> <li>•These amendments are relevant to the State of Hawai'i's Context for Early Learning</li> </ul>
<p><u>(SB1093HD1(c) &amp; HB862HD1(d) The office may contract with eligible providers of school readiness services to increase the capacity of the program to provide school readiness services to children across the state. Eligible providers shall:</u>            (1) <u>Be either the department of education or an entity licensed by the department of human services to provide child care under part VIII of chapter 346; and</u>            (2) <u>Meet the standards established under the program pursuant to rules adopted by the office, which include qualifications for staff</u></p>	<p><u>Eligible providers using the English language shall:</u></p>	<p><b>Language Matters.</b> The National Academy of Sciences research on the Role of Language reveals that characteristics of a speaker's language influence the quantitative skills of the child. Languages also differ in important ways in the clarity and consistency reflected in actual number names. The study found that speakers of languages whose number names are patterned after Chinese are better able than speakers of English to represent numbers using base ten blocks and to perform other place value tasks. In addition to the advantage in the way Hawaiian represents mathematical concepts, the role of language also influences the rate of early reading acquisition. Hawaiian language has its advantages in its syllabic system of early reading. These are advantages of learning through Hawaiian language and for which distinct standards be adopted in the School Readiness program.  <i>Mathematics Learning in Early Childhood: Paths Towards Excellence and Equity; National Academy of Sciences.</i></p>

<p><u>who work with children and data collection regarding participating children. The office may provide support to providers to meet these standards.</u></p>	<p>Add new number (3) <u>Eligible providers using the Hawaiian language shall be required to meet the same health and safety requirements as providers using the English language, but shall be exempt from any other requirement for which they are receiving services as a laboratory school of the state Hawaiian language college.</u></p>	
---	--	--



**LATE**

COMMUNITY CHILDREN'S COUNCIL OF HAWAII  
1177 Alakea Street • B-100 • Honolulu • HI • 96813  
TEL: (808) 586-5363 • TOLL FREE: 1-800-437-8641 • FAX: (808) 586-5366

February 20, 2013

RE: SB 1093, SD 1 – Relating to School Readiness

Dear Senator David Y. Ige and Senator Kidani Vice-Chair Kidani and Members of the Committee,

The Community Children's Councils (CCC's) **strongly supports** the comments of The Autism Society of Hawaii and the Special Education Advisory Council in regards to SB 1093 SD 1 that establishes the School Readiness Program within the early learning system.

The CCC's **strongly suggests**:

The 17 CCCs realize that The School Readiness Program meets a critical need to provide quality early learning programs, especially in light of the thousands of young preschoolers who will be displaced when the Junior Kindergarten Program is discontinued after school year 2013-2014.

The 17 CCCs believes that increasing the availability of early learning programs that meet standards set by the Office of Early Learning will create more opportunities for young children with disabilities to have their school readiness needs met in inclusive settings.

The 17 CCCs are community-based bodies comprised of parents, professionals in both public and private agencies and other interested persons who are concerned with specialized services provided to Hawaii's students. Membership is diverse, voluntary and advisory in nature. The CCCs are in rural and urban communities organized around the Complexes in the Department of Education.

Should you have any questions or need additional information, please contact the Community Children's Council Office (CCCO) at 586-5363.

Thank you for considering our testimony,  
Tom Smith, Co-Chair

Jessica Wong-Sumida, Co-Chair

(Original signatures are on file with the CCCO)

**LATE**



February 21, 2013

To: Senator David Ige, Chair  
Senator, Michelle Kidani, Vice-Chair  
Senate Committee on Ways and Means

From: Deborah Zysman, Executive Director  
Good Beginnings Alliance

RE: Comments in **support** of SB 1093 SD1: Relating to School Readiness.

The Good Beginnings Alliance is in support of SB 1093 SD1, Relating to School Readiness. The Good Beginnings Alliance (GBA) is a policy and advocacy organization focused on ensuring that Hawaii's young children are healthy, safe, and ready for school. We strive to support our stakeholder community to this end, as well as provide relevant information to our families and fellow advocate community. The GBA has over a decade of experience in advocacy and service to our youngest and their families.

Last year the Legislature passed, and the Governor signed into law, legislation creating the Executive Office on Early Learning (EOEL)(Act 178; 2012). This measure also called for the termination of the existing Junior Kindergarten program starting in the 2014-2015 school year; a pre-Kindergarten program for late-born children administered by the Department of Education. The elimination of this program could affect over 5,200 four-year olds statewide. SB 1093 provides a framework for the high quality school readiness program that will begin to take the place of Junior Kindergarten, and will eventually expand to provide statewide assistance to all families w/ four year-olds who choose to send their children to a school readiness program.

SB 1093 SD1 seeks to establish a high quality school readiness in several ways that we see as critical, including:

- Ensuring parent choice in selecting a school readiness program that best serves the child.
- Investing in our existing, and future, early learning/school readiness providers.
- Prioritizing both underserved and at-risk children.
- Providing assistance for middle-income, 'gap group', families of four year olds.
- Tasking the EOEL with developing and adopting standards for participating programs that will ensure qualified instruction and data collection.

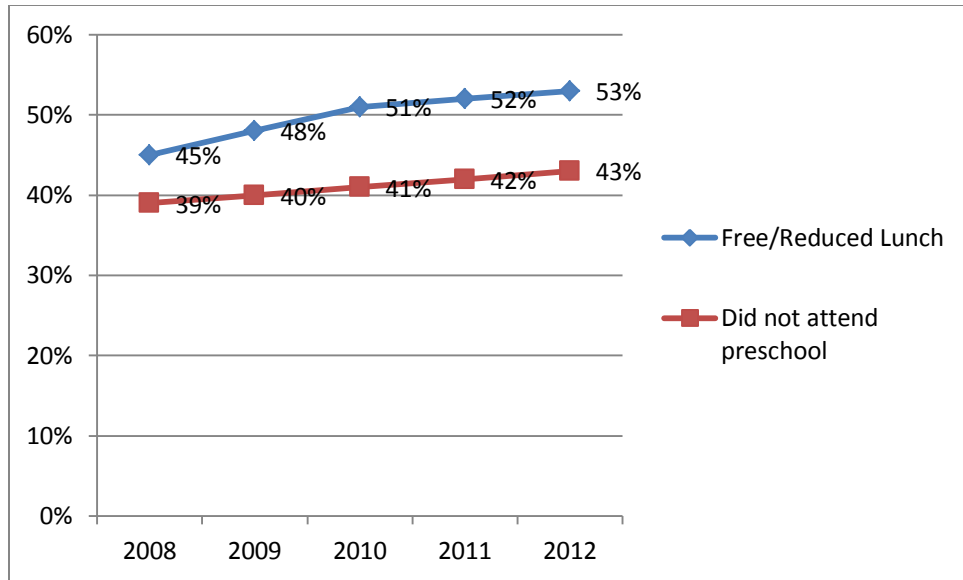
This measure begins to lay the framework for the EOEL to move forward with their mission to prepare our youngest keiki to succeed when they enter Kindergarten. We know firsthand that the physical, cognitive, social, and emotional growth that comes with high quality school readiness programming serves to prepare children for school.

By providing the EOEL authority to execute the School Readiness Program, we hope that they will take great effort to ensure that a range of providers are allowed to participate in the program, including center-based, school-based, family-child interaction learning programs, and family child care homes. By ensuring this breadth of service we can guarantee service to a greater number of families across our state. Including different types of providers can also address the need to increase the capacity that can be expected with the implementation of the new school readiness program.

Hawaii remains one of only eleven states providing no significant state funding for early learning program. This coupled with nearly 43% of our students not having received preschool upon entering Kindergarten means that our Department of Education (DOE) system must devote time and resources to bringing these children up to speed with their counterparts who have had some form of school readiness programming. By investing in our four year olds early we help save our DOE system, and teachers, time and money.

Hawaii also stands to gain from federal matching funds that may become available to support the Obama Administration's initiative to provide high-quality preschool for low- and middle-class families. The Administration is seeking to develop a new federal-state partnership that will provide incentives for states to broaden participation in their public preschool program. Hawaii must be prepared to capitalize on these new sources of revenue.

It should also be noted that over the past four years our state has seen a decrease in the number of children entering Kindergarten having had preschool, and at the same time we see an increase in the number of students receiving free/reduced lunch. Providing the extra support to families in order to send their four year olds to a school readiness program will hopefully help address this trend and allow families greater economic flexibility.



1. 43% of students did not attend preschool prior to entering the HDOE system in the 2012-2013 school year. This percentage has steadily declined annually by 1% from 2008 to 2012 (HSSRA 2012-2013).
2. 53% of students received Free/Reduced Lunch (FRL) in the 2012-2013 school year. This is an increase of 1% when comparing to the previous school year.

We also see the critical mass of public and private support focused on this program like never before. Members of the business, philanthropic, labor, and education community have demonstrated a commitment to working together to build an early learning system that will place our keiki at the same level (or above) as their colleagues on the mainland.

GBA supports SB 1093 SD1 as a first step toward bringing about the ultimate goal of a high quality school readiness program that will serve all of Hawaii's four year old children.



February 21, 2013  
9:00 a.m.  
Conference Room 211

TESTIMONY TO  
THE SENATE COMMITTEE ON WAYS AND MEANS

**RE: SB 1093 SD1- Relating to School Readiness**

Chair Ige, Vice Chair Kidani and members of the committee,

My name is Robert Witt and I am executive director of the Hawaii Association of Independent Schools (HAIS), which represents 99 private and independent schools in Hawaii and educates over 33,000 students statewide.

**HAIS supports SB1093 SD1** which establishes a statewide school readiness program, administered by the Executive Office on Early Learning consisting of providers of school readiness services to assist families in preparing their children for success in school. This program will serve four-year-old children with priority for those who are not eligible to attend public school kindergarten in the calendar year they turn five years of age.

Definitive research demonstrates that high quality preschool helps children with the skills and attitudes needed to be successful in school and life. Without proper foundation, a child's development can be 18-24 months behind, making kindergarten difficult. In three-quarters of DOE kindergarten classes in 2012-2013, the majority of students did not start school with the skills necessary for success.

Moreover, due to the change in age requirements, approximately 5,100 children will be left unserved without a program in place by 2014. In the 2014 school year, a child must be five years old before August 1, 2014 to enter kindergarten. This School Readiness Program will give priority to these children born later in the year.

HAIS has always been a strong proponent of early learning programs for all young learners in the state and we urge you to pass SB1093 SD1.

Thank you for the opportunity to testify.



841 Bishop St., Suite 301  
Honolulu, Hawaii 96813

Telephone: 808 926-1530  
Contact@HEECoalition.org



Senate Committee on Ways and Means  
Senator David Ige, Chair  
Senator Michelle Kidani, Vice Chair

February 21, 2013

Dear Chair Ige, Vice Chair Kidani, and Committee Members:

This testimony is submitted in support for SB1093 SD1, establishing a statewide school readiness program.

The Hui for Excellence in Education (HE'E) is a diverse coalition of over 40 parent and community organizations dedicated to improving student achievement by increasing family and community engagement and partnerships in our schools. Our member list is attached.

The Coalition supports the establishment of a statewide school readiness program and the financial appropriation to support the program. In particular, we support the priority of the late-born four year olds, who will not be able to attend public Kindergarten from the 2014-2015 year, that the program will focus on age-appropriate development for these keiki, and that it helping provide access to high-quality school readiness opportunities for low and moderate income families.

Last session, the Coalition testified that we preferred that Junior Kindergarten (JK) not be terminated without a guarantee in law that all "late-born" impacted students will have a state-funded early learning program as a replacement to meet their educational needs. Therefore, we look forward to a statewide school readiness program established in the law.

We also continue to recommend the development and implementation of an outreach program to preschools, families of late-born to explain the seamless transition to a statewide school readiness program and help parents prepare for the proposed ending of JK.

Thank you for the opportunity to testify and for your consideration.



Our support of this bill represents a 75% consensus or more of our membership.

Sincerely,

Cheri Nakamura  
HE'E Coalition Director

HE'E Member List

Academy 21  
After-School All-Stars Hawaii  
Alliance for Place Based Learning  
\*Castle Complex Community Council  
Center for Civic Education  
Coalition for Children with Special Needs  
\*DOE Windward District  
\*Faith Action for Community Equity  
Fresh Leadership LLC  
Girl Scouts Hawaii  
\*Good Beginnings Alliance  
Harold K.L. Castle Foundation  
\*Hawaii Appleseed Center for Law and Economic Justice  
Hawai'i Athletic League of Scholars  
\*Hawai'i Charter School Network  
\*Hawai'i Education Matters  
\*Hawai'i Nutrition and Physical Activity Coalition  
\*Hawaii State PTSA  
Hawai'i State Student Council  
Hawai'i State Teachers Association  
Hawai'i P-20  
Hawai'i 3Rs  
Head Start Collaboration Office  
It's All About Kids  
\*INPEACE  
Joint Venture Education Forum  
Kamehameha Schools  
\*Kanu Hawai'i  
Kupu A'e  
\*Leaders for the Next Generation  
McREL's Pacific Center for Changing the Odds  
\*Our Public School  
\*Pacific Resources for Education and Learning  
\*Parents and Children Together  
\*Parents for Public Schools Hawai'i  
Punahou School PUEO Program  
Teach for America  
The Learning Coalition

US PACOM

University of Hawai'i College of Education  
YMCA of Honolulu  
Voting Members (\*)



For over 100 years,  
preparing children for success

2707 South King Street  
Honolulu, Hawaii 96826

Phone: (808) 941-9414  
Fax: (808) 946-1468

[www.kcaapreschools.org](http://www.kcaapreschools.org)

**LATE**

February 20, 2013

To: Senator David Y. Ige, Chair, Chair  
Senator Michelle N. Kidani, Vice Chair  
Senate Committee on Ways and Means

From: Christina Cox, President  
KCAA Preschools of Hawaii

Subject: SB1093 SD1 Relating to School Readiness

KCAA Preschools of Hawaii was established in 1895 by the Woman's Board of Missions to serve the children of immigrant workers. We serve over 900 children per year in 7 NAEYC accredited preschools on Oahu. More than 50% of our students are low-income and over 80% go on to attend DOE elementary schools. We manage tuition subsidies from 7 different sources, each with its own set of requirements. We have a \$7 million annual operating budget with 130 employees. KCAA has just completed the construction of a \$3.2 million professional development center for early educators, Hawaii's first! It is located on our Mother Rice property in Moiliili. The Harry & Jeanette Weinberg Center for Early Education and Development is funded exclusively by private businesses and Hawaii's dedicated philanthropic community. KCAA's Board was instrumental in this effort and is committed to working with the early childhood community to increase the number of qualified teachers, to improve their practice and to improve outcomes for Hawaii's *keiki*.

**Please note that while I presently serve as the center-based program provider representative on the Early Learning Advisory Board and also serve as the Liaison for the Childcare Business Coalition of Hawaii which represents more than 60 centers throughout the State I am testifying in full support of this measure today as the President of KCAA Preschools of Hawaii, a position that I have held for the past 12 years.**

So much has changed during my 30 years working in the field of early education in Hawaii. It used to be that having teachers who genuinely enjoyed working with young children and who possessed a joy of learning, a natural curiosity about the world and were willing to share that with the children in their care, was enough. We now need to be sure that our teachers possess not only those important characteristics, but also the knowledge and skills required to help our children compete in the 21<sup>st</sup> Century.

We now know that 85% of a child's brain develops in the first few years of life and that there are critical experiences we should provide a young child with in order to optimize growth and development.

ATHERTON - KAILUA  
KUAPA - HAWAII KAI  
LAURA MORGAN - KAPALAMA HEIGHTS  
MOTHER RICE - MOILILI  
MURIEL - KAKAOKO  
NA LEI - KALIHI  
WAI-KAHALA - KAHALA



- Early experiences have a decisive impact on the actual architecture of the brain and on the nature and extent of adult capacities.
- By the time children from middle-income families are in 3<sup>rd</sup> grade they know about 12,000 words compared to low income children who know just 4,000 words, one third as many as their peers. This gap begins in the early years and research has repeatedly confirmed that early education makes all the difference in school success.

The time to act is now. We have a Governor who has made early childhood development and education a top priority, we have the support of both the philanthropic and business communities and we have seasoned legislators who possess a deep understanding of the issue and who are committed to working together with the broader community to create a better future for our youngest citizens.

I support the passage of SB1093 SD1 to pave the way for the establishment of a statewide school readiness program that will ultimately provide a variety of high quality early education choices for families.

**We will need to pay special attention to the nuts and bolts of this program design if it is to achieve its goal. Research has repeatedly shown that the best ROI occurs when specific quality components are incorporated into the design and when adequate resources, both human and financial, are provided to programs to enable them to offer a high quality program to help our *keiki* get a great start in school and in life.**

**We applaud the state for designing a plan that is based on public/private partnerships and one that maximizes existing resources, including facilities and expertise, which presently exist within the private sector. We look forward to working in partnership with the Executive Office of Early Learning to that end.**

When all is said and done we need to join together, to find some common ground and to see our children as an investment rather an expense.

Thank you for the opportunity to testify on this measure.

**LATE**

I am greatly concerned about the proposal for conditions placed on faith based preschool programs in Talking Points Volume 4. It seems filled with contradictions and will undermine the faith based programs they say they value.

As the pastor of a church which has operated one of these small faith-based programs for over 60 years on the Windward side of Oahu, I seriously question whether there is adequate understanding of the nature of these small faith-based programs. There has not even been an effective job done at reaching out to or seeking input from these smaller schools.

I do agree with some of the examples of stated guidelines such as: “the program must be open to all children,” “the program cannot be used to proselytize or attempt to persuade or convert children or their families” (though I question how this would be applied since some would say simply bringing up or inviting to the church would be proselytizing), and “the program may not require children or their families to participate in faith-based or church sponsored activities or services which Are not part of the school readiness program.”

Some of the contradictions and concerns I have are as follows:

1. They state “faith based programs are a critical part of Hawaii’s preschool landscape.” Yet the proposal seeks to fundamentally change the nature of these programs by removing all faith based content, which is the basis for which they were started in the first place.
2. They state the EOEL would like to “work with faith-based providers” but “must work within legal parameters to do this.” Yet they also admit that there are “existing practices in place that include faith-based organizations in government programs such as DHS Open Doors.” This indicates it is possible to frame a similar legal arrangement and wouldn’t it make sense to bring this into conformity with what is already in practice?
3. They state that “the program may not contain religious observances such as prayer, grace, confession, church attendance, religious instruction, etc.” To remove all of these would remove any semblance of being faith-based which means they are not willing to work with and include faith based programs unless they are secularized.
4. They state that the program may not discriminate in hiring based on religious affiliation or lack of religious affiliation thus going against an exemption for hiring in churches and religious institutions which the United States Supreme Court has ruled is allowable as a part of their stated mission. They cannot require churches to hire employees whose beliefs directly contradict those of the church. This in itself would seem to be cause for a legal challenge.

5. They state that “unless it is not practical, classes should be conducted in rooms that are free of religious symbols and other religious items.” Who is to determine what is practical? That something could be easily removed or painted over? These are churches, what would they expect if not for religious symbols. To say churches would have to remove them again shows the EOEL is not interested in working with faith-based programs but secularizing them and distancing them from their roots and mission.

I do not believe enough thought has been given to the realities of what the long term impact would be on the faith based programs, which are critical in Hawaii. Many would likely close down rather than compromise their reason for existence or allow the state to unduly interfere with how they conduct ministry to the communities they serve. This could leave a shortage of preschool care or require more for-profit schools which in turn would increase costs to our families since churches tend to subsidize the cost of tuition and keep prices down either directly or indirectly through the use of their facilities. It would also be likely to increase the cost to the state to make up for this loss.



**From:** [mailinglist@capitol.hawaii.gov](mailto:mailinglist@capitol.hawaii.gov)  
**To:** [WAM Testimony](#)  
**Cc:** [jedill@pidfoundation.org](mailto:jedill@pidfoundation.org)  
**Subject:** \*Submitted testimony for SB1093 on Feb 21, 2013 09:00AM\*  
**Date:** Wednesday, February 20, 2013 9:28:40 AM

---

SB1093

Submitted on: 2/20/2013

Testimony for WAM on Feb 21, 2013 09:00AM in Conference Room 211

Submitted By	Organization	Testifier Position	Present at Hearing
Jan E. Hanohano Dill - President	Partners In Development Foundation	Support	No

Comments:

Please note that testimony submitted less than 24 hours prior to the hearing, improperly identified, or directed to the incorrect office, may not be posted online or distributed to the committee prior to the convening of the public hearing.

Do not reply to this email. This inbox is not monitored. For assistance please email [webmaster@capitol.hawaii.gov](mailto:webmaster@capitol.hawaii.gov)



**THE QUEEN'S HEALTH SYSTEMS**

**LATE**

1301 Punchbowl Street • Honolulu, Hawaii 96813 • Phone (808) 691-5900

**S.B. 1093, S.D.1, RELATING TO SCHOOL READINESS**  
**Senate Committee on Ways and Means**  
**February 21, 2013**  
**Room 209**

Thank you for the opportunity to provide testimony in **strong support** for S.B. 1093, SD1, Relating to School Readiness . My name is Paula Yoshioka, Senior Vice President for The Queen's Health Systems (QHS).

Intensive early education programs for children have been shown to yield numerous educational benefits. However, in 2011, Columbia University's Mailman School of Public Health looked at the issue to early childhood education and the impact on health and health behaviors. Expanding on an existing 1970s randomized control study of 111 infants that followed these infants through age 21, the Columbia University study expanded on the impact on three health measures and 11 measures of behavioral risk factors. The health measures were the number of self-reported health problems since 15 years of age, a depression index score, and the number of hospitalizations in the past year. The behavioral risk factors were related to drug use, access to primary care, and traffic safety. Researchers found that individuals who had received the intensive education starting in infancy had significantly better health and better health behaviors as young adults, and that these findings were independent of IQ, educational attainment, or health insurance status. This study provides evidence in support that early education may improve income, reduce crime, and provide a cost-effective means to improve population health.

We urge Hawaii's lawmakers to support S.B. 1093 to establish early childhood school readiness in Hawaii for the benefit of our Keiki's future positive health outcomes.





**From:** [Catherine Awong](#)  
**To:** [WAM Testimony](#)  
**Subject:** In Support of SB 1084, 1093 and 1095  
**Date:** Wednesday, February 20, 2013 9:32:37 AM

---

Catherine Awong from Mililani, HI writes:

To: Senator David Ige, Chair; Senator Michelle N. Kidani, Vice-Chair; Senate Committee on Ways and Means Re: SBs 1084, 1093, and 1095, RELATING TO EARLY CHILDHOOD EDUCATION and SCHOOL READINESS. Honorable Chair Ige & Committee Members: Thank you for allowing me to submit testimony in support of Senate Bills 1084, 1093, and 1095. All three of these measures are critical to ensuring that Hawaii's four-year-olds will have the quality early learning experience they deserve. These measures are important to me because a statewide early childhood education program would not only prepare children for school, but it would also foster exceptional physical and emotional development. These factors, altogether, are key components in producing healthy, capable, and contributing adults. Many studies have proven that high-quality early childhood education programs have both short- and long-term benefits for children, individuals, and society as a whole. SB1093 and SB 1095 would provide parents with more access to these essential programs and also have the potential to alleviate financial burdens associated with early childhood education costs; currently families in Hawaii pay on average \$720/month per child for preschool. It is important to secure a solid foundation for our children in order to ensure a more successful, healthy, and promising future for us all. Thank you for the opportunity to submit testimony in support of SBs 1084, 1093, and 1095.

-----  
Form Data:

Email 1 (Primary): [mscat@sjcpmililani.org](mailto:mscat@sjcpmililani.org)

First Name: Catherine

Last Name: Awong

City: Mililani  
State: HI  
ZIP Code: 96789



February 20, 2013  
Hearing on Thursday, February 21, 2013 at 9 a.m.  
Senate Education Ways and Means Committee  
Conference Room 211  
In support of SB 1093

To Whom It May Concern:

My name is Celia Chang Takahashi and I am an Early Childhood Professional and the mother of two young children.

I am writing this testimony to ask for your support of SB 1093 to establish a statewide school readiness program because this bill will enable all children access to early learning opportunities the year prior to entering public school Kindergarten.

We have a plethora of research that demonstrates the benefit quality early learning experiences have on young children, including:

- How quality early learning experiences provide children with the social, emotional, physical and academic skills they need for kindergarten, as well as life long learning.
- A high financial return on early learning investment. According to the Good Beginnings Alliance, for every \$1 invested in quality early learning programs, Hawaii receives an approximate \$4 investment. This return on investment includes, but is not limited to, higher retention rates; lower teen pregnancy/parent rates; higher college entrance numbers; and less money spent on incarceration. In today's economy no bank, savings and loan or high interest bearing CD will provide that kind of return on investment. Investing in young children up front is a sound investment in Hawaii's future.
- Family involvement is at its highest when children are young, that is, during the formative "preschool" years. Research documents that there is a direct correlation between family involvement and educational success. By making

quality early learning experiences more readily available and affordable, we increase familial involvement and increase the educational success of the children in these families.

If we want Hawaii to be the Aloha State, we need to show Aloha to our youngest residents by investing in their education upfront. By doing so, we invest in Hawai'i's future. The time to invest in our keiki is now. Hawaii cannot wait any longer. The Aloha State deserves better. Our keiki deserve better.

Mahalo nui loa for the opportunity to submit testimony in support of SB 1093.



**From:** [Cheryl Tabaco](#)  
**To:** [WAM Testimony](#)  
**Subject:** In Support of SB 1084, 1093 and 1095  
**Date:** Wednesday, February 20, 2013 5:06:41 PM

---

Cheryl Tabaco from Haiku, HI writes:

To: Senator David Ige, Chair; Senator Michelle N. Kidani, Vice-Chair; Senate Committee on Ways and Means Re: SBs 1084, 1093, and 1095, RELATING TO EARLY CHILDHOOD EDUCATION and SCHOOL READINESS. Honorable Chair Ige & Committee Members: Thank you for allowing me to submit testimony in support of Senate Bills 1084, 1093, and 1095. All three of these measures are critical to ensuring that Hawaii's four-year-olds will have the quality early learning experience they deserve. These measures are important to me because a statewide early childhood education program would not only prepare children for school, but it would also foster exceptional physical and emotional development. These factors, altogether, are key components in producing healthy, capable, and contributing adults. Many studies have proven that high-quality early childhood education programs have both short- and long-term benefits for children, individuals, and society as a whole. SB1093 and SB 1095 would provide parents with more access to these essential programs and also have the potential to alleviate financial burdens associated with early childhood education costs; currently families in Hawaii pay on average \$720/month per child for preschool. It is important to secure a solid foundation for our children in order to ensure a more successful, healthy, and promising future for us all. Thank you for the opportunity to submit testimony in support of SBs 1084, 1093, and 1095.

-----  
Form Data:

Email 1 (Primary): [ctabaco001@hawaii.rr.com](mailto:ctabaco001@hawaii.rr.com)

First Name: Cheryl

Last Name: Tabaco

City: Haiku  
State: HI  
ZIP Code: 96708



**From:** [Christine House](#)  
**To:** [WAM Testimony](#)  
**Subject:** In Support of SB 1084, 1093 and 1095  
**Date:** Wednesday, February 20, 2013 10:26:58 PM

---

Christine House from Kailua-Kona, HI writes:

To: Senator David Ige, Chair; Senator Michelle N. Kidani, Vice-Chair; Senate Committee on Ways and Means Re: SBs 1084, 1093, and 1095, RELATING TO EARLY CHILDHOOD EDUCATION and SCHOOL READINESS. Honorable Chair Ige & Committee Members: Thank you for allowing me to submit testimony in support of Senate Bills 1084, 1093, and 1095. All three of these measures are critical to ensuring that Hawaii's four-year-olds will have the quality early learning experience they deserve. These measures are important to me because a statewide early childhood education program would not only prepare children for school, but it would also foster exceptional physical and emotional development. These factors, altogether, are key components in producing healthy, capable, and contributing adults. Many studies have proven that high-quality early childhood education programs have both short- and long-term benefits for children, individuals, and society as a whole. SB1093 and SB 1095 would provide parents with more access to these essential programs and also have the potential to alleviate financial burdens associated with early childhood education costs; currently families in Hawaii pay on average \$720/month per child for preschool. It is important to secure a solid foundation for our children in order to ensure a more successful, healthy, and promising future for us all. Thank you for the opportunity to submit testimony in support of SBs 1084, 1093, and 1095.

-----  
Form Data:

Email 1 (Primary): [curdleistine@gmail.com](mailto:curdleistine@gmail.com)

First Name: Christine

Last Name: House

City: Kailua-Kona  
State: HI  
ZIP Code: 96745



**From:** [Christy Ryan](#)  
**To:** [WAM Testimony](#)  
**Subject:** In Support of SB 1084, 1093 and 1095  
**Date:** Wednesday, February 20, 2013 11:02:34 AM

---

Christy Ryan from Wahiawa, HI writes:

To: Senator David Ige, Chair; Senator Michelle N. Kidani, Vice-Chair; Senate Committee on Ways and Means Re: SBs 1084, 1093, and 1095, RELATING TO EARLY CHILDHOOD EDUCATION and SCHOOL READINESS. Honorable Chair Ige & Committee Members: Thank you for allowing me to submit testimony in support of Senate Bills 1084, 1093, and 1095. All three of these measures are critical to ensuring that Hawaii's four-year-olds will have the quality early learning experience they deserve. These measures are important to me because a statewide early childhood education program would not only prepare children like my daughter for school, but it would also foster exceptional physical and emotional development. These factors, altogether, are key components in producing healthy, capable, and contributing adults. Many studies have proven that high-quality early childhood education programs have both short- and long-term benefits for children, individuals, and society as a whole. SB1093 and SB 1095 would provide parents like me with more access to these essential programs and also have the potential to alleviate financial burdens associated with early childhood education costs; currently families in Hawaii pay on average \$720/month per child for preschool. It is important to secure a solid foundation for our children in order to ensure a more successful, healthy, and promising future for us all. Thank you for the opportunity to submit testimony in support of SBs 1084, 1093, and 1095.

-----  
Form Data:

Email 1 (Primary): christy.ryan@ricoh-usa.com

First Name: Christy

Last Name: Ryan

City: Wahiawa  
State: HI  
ZIP Code: 96786



**From:** [Jana Brown](#)  
**To:** [WAM Testimony](#)  
**Subject:** In Support of SB 1084, 1093 and 1095  
**Date:** Wednesday, February 20, 2013 9:18:49 AM

---

Jana Brown from Kahului, HI writes:

To: Senator David Ige, Chair; Senator Michelle N. Kidani, Vice-Chair; Senate Committee on Ways and Means Re: SBs 1084, 1093, and 1095, RELATING TO EARLY CHILDHOOD EDUCATION and SCHOOL READINESS. Honorable Chair Ige & Committee Members: Thank you for allowing me to submit testimony in support of Senate Bills 1084, 1093, and 1095. All three of these measures are critical to ensuring that Hawaii's four-year-olds will have the quality early learning experience they deserve. These measures are important to me because a statewide early childhood education program would not only prepare children for school, but it would also foster exceptional physical and emotional development. These factors, altogether, are key components in producing healthy, capable, and contributing adults. Many studies have proven that high-quality early childhood education programs have both short- and long-term benefits for children, individuals, and society as a whole. SB1093 and SB 1095 would provide parents with more access to these essential programs and also have the potential to alleviate financial burdens associated with early childhood education costs; currently families in Hawaii pay on average \$720/month per child for preschool. It is important to secure a solid foundation for our children in order to ensure a more successful, healthy, and promising future for us all. Thank you for the opportunity to submit testimony in support of SBs 1084, 1093, and 1095.

-----  
Form Data:

Email 1 (Primary): [jana@mfss.org](mailto:jana@mfss.org)

First Name: Jana

Last Name: Brown

City: Kahului  
State: HI  
ZIP Code: 96793



**From:** [Chuck Larson](#)  
**To:** [WAM Testimony](#)  
**Subject:** \*\*\*\*\*SPAM\*\*\*\*\* In Support of SB 1084, 1093 and 1095  
**Date:** Wednesday, February 20, 2013 11:44:15 AM

---

Chuck Larson from Kailua, HI writes:

To: Senator David Ige, Chair; Senator Michelle N. Kidani, Vice-Chair; Senate Committee on Ways and Means Re: SBs 1084, 1093, and 1095, RELATING TO EARLY CHILDHOOD EDUCATION and SCHOOL READINESS. Honorable Chair Ige & Committee Members: Thank you for allowing me to submit testimony in support of Senate Bills 1084, 1093, and 1095. All three of these measures are critical to ensuring that Hawaii's four-year-olds will have the quality early learning experience they deserve. These measures are important to me because a statewide early childhood education program would not only prepare children for school, but it would also foster exceptional physical and emotional development. These factors, altogether, are key components in producing healthy, capable, and contributing adults. Many studies have proven that high-quality early childhood education programs have both short- and long-term benefits for children, individuals, and society as a whole. SB1093 and SB 1095 would provide parents with more access to these essential programs and also have the potential to alleviate financial burdens associated with early childhood education costs; currently families in Hawaii pay on average \$720/month per child for preschool. It is important to secure a solid foundation for our children in order to ensure a more successful, healthy, and promising future for us all. Thank you for the opportunity to submit testimony in support of SBs 1084, 1093, and 1095.

-----  
Form Data:

Email 1 (Primary): seagull@aloha.com

First Name: Chuck

Last Name: Larson

City: Kailua  
State: HI  
ZIP Code: 96734





**From:** [Colin Hosking](#)  
**To:** [WAM Testimony](#)  
**Subject:** In Support of SB 1084, 1093 and 1095  
**Date:** Wednesday, February 20, 2013 9:07:49 PM

---

Colin Hosking from Honolulu, HI writes:

To: Senator David Ige, Chair; Senator Michelle N. Kidani, Vice-Chair; Senate Committee on Ways and Means Re: SBs 1084, 1093, and 1095, RELATING TO EARLY CHILDHOOD EDUCATION and SCHOOL READINESS. Honorable Chair Ige & Committee Members: Thank you for allowing me to submit testimony in support of Senate Bills 1084, 1093, and 1095. All three of these measures are critical to ensuring that Hawaii's four-year-olds will have the quality early learning experience they deserve. These measures are important to me because a statewide early childhood education program would not only prepare children for school, but it would also foster exceptional physical and emotional development. These factors, altogether, are key components in producing healthy, capable, and contributing adults. Many studies have proven that high-quality early childhood education programs have both short- and long-term benefits for children, individuals, and society as a whole. SB1093 and SB 1095 would provide parents with more access to these essential programs and also have the potential to alleviate financial burdens associated with early childhood education costs; currently families in Hawaii pay on average \$720/month per child for preschool. It is important to secure a solid foundation for our children in order to ensure a more successful, healthy, and promising future for us all. Thank you for the opportunity to submit testimony in support of SBs 1084, 1093, and 1095.

-----  
Form Data:

Email 1 (Primary): colinhosking.ch@gmail.com

First Name: Colin

Last Name: Hosking

City: Honolulu  
State: HI  
ZIP Code: 96826



**From:** [Jesse Rabot](#)  
**To:** [WAM Testimony](#)  
**Subject:** \*\*\*\*\*SPAM\*\*\*\*\* In Support of SB 1084, 1093 and 1095  
**Date:** Wednesday, February 20, 2013 2:06:01 PM

---

Jesse Rabot from Kapaa, HI writes:

To: Senator David Ige, Chair; Senator Michelle N. Kidani, Vice-Chair; Senate Committee on Ways and Means Re: SBs 1084, 1093, and 1095, RELATING TO EARLY CHILDHOOD EDUCATION and SCHOOL READINESS. Honorable Chair Ige & Committee Members: Thank you for allowing me to submit testimony in support of Senate Bills 1084, 1093, and 1095. All three of these measures are critical to ensuring that Hawaii's four-year-olds will have the quality early learning experience they deserve. These measures are important to me because a statewide early childhood education program would not only prepare children for school, but it would also foster exceptional physical and emotional development. These factors, altogether, are key components in producing healthy, capable, and contributing adults. Many studies have proven that high-quality early childhood education programs have both short- and long-term benefits for children, individuals, and society as a whole. SB1093 and SB 1095 would provide parents with more access to these essential programs and also have the potential to alleviate financial burdens associated with early childhood education costs; currently families in Hawaii pay on average \$720/month per child for preschool. It is important to secure a solid foundation for our children in order to ensure a more successful, healthy, and promising future for us all. Thank you for the opportunity to submit testimony in support of SBs 1084, 1093, and 1095.

-----  
Form Data:

Email 1 (Primary): [jmrabot@hawaii.rr.com](mailto:jmrabot@hawaii.rr.com)

First Name: Jesse

Last Name: Rabot

City: Kapaa  
State: HI  
ZIP Code: 96746

**From:** [Dana Constable](#)  
**To:** [WAM Testimony](#)  
**Subject:** In Support of SB 1084, 1093 and 1095  
**Date:** Wednesday, February 20, 2013 8:26:06 PM

---



Dana Constable from Honolulu, HI writes:

To: Senator David Ige, Chair; Senator Michelle N. Kidani, Vice-Chair; Senate Committee on Ways and Means Re: SBs 1084, 1093, and 1095, RELATING TO EARLY CHILDHOOD EDUCATION and SCHOOL READINESS. Honorable Chair Ige & Committee Members: Thank you for allowing me to submit testimony in support of Senate Bills 1084, 1093, and 1095. All three of these measures are critical to ensuring that Hawaii's four-year-olds will have the quality early learning experience they deserve. These measures are important to me because a statewide early childhood education program would not only prepare children for school, but it would also foster exceptional physical and emotional development. These factors, altogether, are key components in producing healthy, capable, and contributing adults. Many studies have proven that high-quality early childhood education programs have both short- and long-term benefits for children, individuals, and society as a whole. SB1093 and SB 1095 would provide parents with more access to these essential programs and also have the potential to alleviate financial burdens associated with early childhood education costs; currently families in Hawaii pay on average \$720/month per child for preschool. It is important to secure a solid foundation for our children in order to ensure a more successful, healthy, and promising future for us all. Thank you for the opportunity to submit testimony in support of SBs 1084, 1093, and 1095.

-----  
Form Data:

Email 1 (Primary): dcons001@gmail.com

First Name: Dana

Last Name: Constable

City: Honolulu  
State: HI  
ZIP Code: 96813



**From:** [Dara Sullivan](#)  
**To:** [WAM Testimony](#)  
**Subject:** In Support of SB 1084, 1093 and 1095  
**Date:** Wednesday, February 20, 2013 9:08:18 PM

---

Dara Sullivan from Haleiwa, HI writes:

To: Senator David Ige, Chair; Senator Michelle N. Kidani, Vice-Chair; Senate Committee on Ways and Means Re: SBs 1084, 1093, and 1095, RELATING TO EARLY CHILDHOOD EDUCATION and SCHOOL READINESS. Honorable Chair Ige & Committee Members: Thank you for allowing me to submit testimony in support of Senate Bills 1084, 1093, and 1095. All three of these measures are critical to ensuring that Hawaii's four-year-olds will have the quality early learning experience they deserve. These measures are important to me because a statewide early childhood education program would not only prepare children for school, but it would also foster exceptional physical and emotional development. These factors, altogether, are key components in producing healthy, capable, and contributing adults. Many studies have proven that high-quality early childhood education programs have both short- and long-term benefits for children, individuals, and society as a whole. SB1093 and SB 1095 would provide parents with more access to these essential programs and also have the potential to alleviate financial burdens associated with early childhood education costs; currently families in Hawaii pay on average \$720/month per child for preschool. It is important to secure a solid foundation for our children in order to ensure a more successful, healthy, and promising future for us all. Thank you for the opportunity to submit testimony in support of SBs 1084, 1093, and 1095.

-----  
Form Data:

Email 1 (Primary): shopchinadoll@gmail.com

First Name: Dara

Last Name: Sullivan

City: Haleiwa  
State: HI  
ZIP Code: 96712



**From:** [Karyn Clay](#)  
**To:** [WAM Testimony](#)  
**Subject:** \*\*\*\*\*SPAM\*\*\*\*\* In Support of SB 1084, 1093 and 1095  
**Date:** Wednesday, February 20, 2013 11:20:15 AM

---

Karyn Clay from Kamuela, HI writes:

To: Senator David Ige, Chair; Senator Michelle N. Kidani, Vice-Chair; Senate Committee on Ways and Means Re: SBs 1084, 1093, and 1095, RELATING TO EARLY CHILDHOOD EDUCATION and SCHOOL READINESS. Honorable Chair Ige & Committee Members: Thank you for allowing me to submit testimony in support of Senate Bills 1084, 1093, and 1095. All three of these measures are critical to ensuring that Hawaii's four-year-olds will have the quality early learning experience they deserve. These measures are important to me because a statewide early childhood education program would not only prepare children for school, but it would also foster exceptional physical and emotional development. These factors, altogether, are key components in producing healthy, capable, and contributing adults. Many studies have proven that high-quality early childhood education programs have both short- and long-term benefits for children, individuals, and society as a whole. SB1093 and SB 1095 would provide parents with more access to these essential programs and also have the potential to alleviate financial burdens associated with early childhood education costs; currently families in Hawaii pay on average \$720/month per child for preschool. It is important to secure a solid foundation for our children in order to ensure a more successful, healthy, and promising future for us all. Thank you for the opportunity to submit testimony in support of SBs 1084, 1093, and 1095.

-----  
Form Data:

Email 1 (Primary): karynbclay@aol.com

First Name: Karyn

Last Name: Clay

City: Kamuela  
State: HI  
ZIP Code: 96743



**From:** [Kathleen Reinhardt](#)  
**To:** [WAM Testimony](#)  
**Subject:** In Support of SB 1084, 1093 and 1095  
**Date:** Wednesday, February 20, 2013 7:55:39 PM

---

Kathleen Reinhardt from Honolulu, HI writes:

To: Senator David Ige, Chair; Senator Michelle N. Kidani, Vice-Chair; Senate Committee on Ways and Means Re: SBs 1084, 1093, and 1095, RELATING TO EARLY CHILDHOOD EDUCATION and SCHOOL READINESS. Honorable Chair Ige & Committee Members: Thank you for allowing me to submit testimony in support of Senate Bills 1084, 1093, and 1095. All three of these measures are critical to ensuring that Hawaii's four-year-olds will have the quality early learning experience they deserve. These measures are important to me because a statewide early childhood education program would not only prepare children for school, but it would also foster exceptional physical and emotional development. These factors, altogether, are key components in producing healthy, capable, and contributing adults. Many studies have proven that high-quality early childhood education programs have both short- and long-term benefits for children, individuals, and society as a whole. SB1093 and SB 1095 would provide parents with more access to these essential programs and also have the potential to alleviate financial burdens associated with early childhood education costs; currently families in Hawaii pay on average \$720/month per child for preschool. It is important to secure a solid foundation for our children in order to ensure a more successful, healthy, and promising future for us all. Thank you for the opportunity to submit testimony in support of SBs 1084, 1093, and 1095.

-----  
Form Data:

Email 1 (Primary): [kathier808@aol.com](mailto:kathier808@aol.com)

First Name: Kathleen

Last Name: Reinhardt

City: Honolulu  
State: HI  
ZIP Code: 96821

**From:** [Larry Corpuz](#)  
**To:** [WAM Testimony](#)  
**Subject:** In Support of SB 1084, 1093 and 1095  
**Date:** Wednesday, February 20, 2013 8:26:09 PM

---

Larry Corpuz from Waipahu, HI writes:

To: Senator David Ige, Chair; Senator Michelle N. Kidani, Vice-Chair; Senate Committee on Ways and Means Re: SBs 1084, 1093, and 1095, RELATING TO EARLY CHILDHOOD EDUCATION and SCHOOL READINESS. Honorable Chair Ige & Committee Members: Thank you for allowing me to submit testimony in support of Senate Bills 1084, 1093, and 1095. All three of these measures are critical to ensuring that Hawaii's four-year-olds will have the quality early learning experience they deserve. These measures are important to me because a statewide early childhood education program would not only prepare children for school, but it would also foster exceptional physical and emotional development. These factors, altogether, are key components in producing healthy, capable, and contributing adults. Many studies have proven that high-quality early childhood education programs have both short- and long-term benefits for children, individuals, and society as a whole. SB1093 and SB 1095 would provide parents with more access to these essential programs and also have the potential to alleviate financial burdens associated with early childhood education costs; currently families in Hawaii pay on average \$720/month per child for preschool. It is important to secure a solid foundation for our children in order to ensure a more successful, healthy, and promising future for us all. Thank you for the opportunity to submit testimony in support of SBs 1084, 1093, and 1095.

-----  
Form Data:

Email 1 (Primary): lec81949@hawaiiantel.net

First Name: Larry

Last Name: Corpuz

City: Waipahu  
State: HI  
ZIP Code: 96797



**From:** [Mark Ebert](#)  
**To:** [WAM Testimony](#)  
**Subject:** In Support of SB 1084, 1093 and 1095  
**Date:** Wednesday, February 20, 2013 8:12:39 PM

---

Mark Ebert from Honolulu, HI writes:

To: Senator David Ige, Chair; Senator Michelle N. Kidani, Vice-Chair; Senate Committee on Ways and Means Re: SBs 1084, 1093, and 1095, RELATING TO EARLY CHILDHOOD EDUCATION and SCHOOL READINESS. Honorable Chair Ige & Committee Members: Thank you for allowing me to submit testimony in support of Senate Bills 1084, 1093, and 1095. All three of these measures are critical to ensuring that Hawaii's four-year-olds will have the quality early learning experience they deserve. These measures are important to me because a statewide early childhood education program would not only prepare children for school, but it would also foster exceptional physical and emotional development. These factors, altogether, are key components in producing healthy, capable, and contributing adults. Many studies have proven that high-quality early childhood education programs have both short- and long-term benefits for children, individuals, and society as a whole. SB1093 and SB 1095 would provide parents with more access to these essential programs and also have the potential to alleviate financial burdens associated with early childhood education costs; currently families in Hawaii pay on average \$720/month per child for preschool. It is important to secure a solid foundation for our children in order to ensure a more successful, healthy, and promising future for us all. Thank you for the opportunity to submit testimony in support of SBs 1084, 1093, and 1095.

-----  
Form Data:

Email 1 (Primary): mark.ebert@colorado.edu

First Name: Mark

Last Name: Ebert

City: Honolulu  
State: HI  
ZIP Code: 96817





**From:** [Nohea Lelewi](#)  
**To:** [WAM Testimony](#)  
**Subject:** \*\*\*\*\*SPAM\*\*\*\*\* In Support of SB 1084, 1093 and 1095  
**Date:** Wednesday, February 20, 2013 10:10:28 AM

---

Nohea Lelewi from Kailua-Kona, HI writes:

To: Senator David Ige, Chair; Senator Michelle N. Kidani, Vice-Chair; Senate Committee on Ways and Means Re: SBs 1084, 1093, and 1095, RELATING TO EARLY CHILDHOOD EDUCATION and SCHOOL READINESS. Honorable Chair Ige & Committee Members: Thank you for allowing me to submit testimony in support of Senate Bills 1084, 1093, and 1095. All three of these measures are critical to ensuring that Hawaii's four-year-olds will have the quality early learning experience they deserve. These measures are important to me because a statewide early childhood education program would not only prepare children for school, but it would also foster exceptional physical and emotional development. These factors, altogether, are key components in producing healthy, capable, and contributing adults. Many studies have proven that high-quality early childhood education programs have both short- and long-term benefits for children, individuals, and society as a whole. SB1093 and SB 1095 would provide parents with more access to these essential programs and also have the potential to alleviate financial burdens associated with early childhood education costs; currently families in Hawaii pay on average \$720/month per child for preschool. It is important to secure a solid foundation for our children in order to ensure a more successful, healthy, and promising future for us all. Thank you for the opportunity to submit testimony in support of SBs 1084, 1093, and 1095.

-----  
Form Data:

Email 1 (Primary): [nlelewi@fsswh.org](mailto:nlelewi@fsswh.org)

First Name: Nohea

Last Name: Lelewi

City: Kailua-Kona  
State: HI  
ZIP Code: 96740



**From:** [msity carver](#)  
**To:** [WAM Testimony](#)  
**Subject:** In Support of SB 1084, 1093 and 1095  
**Date:** Wednesday, February 20, 2013 8:01:25 PM

---

msity carver from kailua kona, HI writes:

To: Senator David Ige, Chair; Senator Michelle N. Kidani, Vice-Chair; Senate Committee on Ways and Means Re: SBs 1084, 1093, and 1095, RELATING TO EARLY CHILDHOOD EDUCATION and SCHOOL READINESS. Honorable Chair Ige & Committee Members: Thank you for allowing me to submit testimony in support of Senate Bills 1084, 1093, and 1095. All three of these measures are critical to ensuring that Hawaii's four-year-olds will have the quality early learning experience they deserve. These measures are important to me because a statewide early childhood education program would not only prepare children for school, but it would also foster exceptional physical and emotional development. These factors, altogether, are key components in producing healthy, capable, and contributing adults. Many studies have proven that high-quality early childhood education programs have both short- and long-term benefits for children, individuals, and society as a whole. SB1093 and SB 1095 would provide parents with more access to these essential programs and also have the potential to alleviate financial burdens associated with early childhood education costs; currently families in Hawaii pay on average \$720/month per child for preschool. It is important to secure a solid foundation for our children in order to ensure a more successful, healthy, and promising future for us all. Thank you for the opportunity to submit testimony in support of SBs 1084, 1093, and 1095.

-----  
Form Data:

Email 1 (Primary): [mnoelanileong@aol.com](mailto:mnoelanileong@aol.com)

First Name: msity

Last Name: carver

City: kailua kona  
State: HI  
ZIP Code: 96740



February 20, 2013  
Hearing on Thursday, February 21, 2013 at 9 a.m.  
Senate Education Ways and Means Committee  
Conference Room 211  
In support of SB 1093

To Whom It May Concern:

My name is Phyllis Ida and I am a retired DOE Special Educator, and the former 619 Coordinator for the Windward District. I also over see the grant administration for the Windward District P-3 Demonstration Project that focuses on keiki reading on grade level by third grade, providing model program of seamless early learning experiences from early childhood programs through elementary school for young children in the Windward District.

I am writing this testimony to ask for your support of SB 1093 to establish a statewide school readiness program because this bill will enable all children access to early learning opportunities the year prior to entering public school Kindergarten.

We have a plethora of research that demonstrates the benefit quality early learning experiences have on young children, including:

- Assisting children with the skills and attitudes needed to be successful in school and in life. Quality early learning provides children with the social, emotional, physical and academic skills they need for kindergarten, as well as life long learning.
- Research that documents that there is a correlation between family involvement and educational success. Family involvement is at its highest when children are young, that is, during the formative “preschool” years. By making quality early learning experiences more readily available and affordable, we increase familial involvement and increase the educational success of the children in these families.

- A high financial return on early learning investment. According to the Good Beginnings Alliance, for every \$1 invested in quality early learning programs, Hawaii receives an approximate \$4 investment. This return on investment includes, but is not limited to, higher retention rates; lower teen pregnancy/parent rates; higher college entrance numbers; and less money spent on incarceration.

Because screening is a vital component to child development and school readiness, in addition to all of the items outlined in SB 1093, **we would like to request that the school readiness services made available to assist families include, but not be limited to, developmental, vision, and hearing screening.** When children are properly diagnosed through early screenings we increase their chances to succeed in kindergarten because their developmental needs have been identified early, giving their family and practitioners appropriate time to provide them with the tools they need to succeed in life long learning.

If we want to invest in Hawai'i's future, we need to invest in the future of our keiki. That investment needs to take place now with the school readiness program as detailed in SB 1093. The time to invest in our keiki is now. Hawaii cannot wait any longer. The Aloha State deserves better. Our keiki deserve better.

Mahalo nui loa for the opportunity to submit testimony in support of SB 1093.



**From:** [Pilialoa Kalele](#)  
**To:** [WAM Testimony](#)  
**Subject:** In Support of SB 1084, 1093 and 1095  
**Date:** Wednesday, February 20, 2013 2:44:06 PM

---

Pilialoa Kalele from Kailua-Kona, HI writes:

To: Senator David Ige, Chair; Senator Michelle N. Kidani, Vice-Chair; Senate Committee on Ways and Means Re: SBs 1084, 1093, and 1095, RELATING TO EARLY CHILDHOOD EDUCATION and SCHOOL READINESS. Honorable Chair Ige & Committee Members: Thank you for allowing me to submit testimony in support of Senate Bills 1084, 1093, and 1095. All three of these measures are critical to ensuring that Hawaii's four-year-olds will have the quality early learning experience they deserve. These measures are important to me because a statewide early childhood education program would not only prepare children for school, but it would also foster exceptional physical and emotional development. These factors, altogether, are key components in producing healthy, capable, and contributing adults. Many studies have proven that high-quality early childhood education programs have both short- and long-term benefits for children, individuals, and society as a whole. SB1093 and SB 1095 would provide parents with more access to these essential programs and also have the potential to alleviate financial burdens associated with early childhood education costs; currently families in Hawaii pay on average \$720/month per child for preschool. It is important to secure a solid foundation for our children in order to ensure a more successful, healthy, and promising future for us all. Thank you for the opportunity to submit testimony in support of SBs 1084, 1093, and 1095.

-----  
Form Data:

Email 1 (Primary): pilikalele@gmail.com

First Name: Pilialoa

Last Name: Kalele

City: Kailua-Kona  
State: HI  
ZIP Code: 96740



**From:** [Rachel Donahue](#)  
**To:** [WAM Testimony](#)  
**Subject:** In Support of SB 1084, 1093 and 1095  
**Date:** Wednesday, February 20, 2013 7:49:20 PM

---

Rachel Donahue from Honolulu, HI writes:

To: Senator David Ige, Chair; Senator Michelle N. Kidani, Vice-Chair; Senate Committee on Ways and Means Re: SBs 1084, 1093, and 1095, RELATING TO EARLY CHILDHOOD EDUCATION and SCHOOL READINESS. Honorable Chair Ige & Committee Members: Thank you for allowing me to submit testimony in support of Senate Bills 1084, 1093, and 1095. All three of these measures are critical to ensuring that Hawaii's four-year-olds will have the quality early learning experience they deserve. These measures are important to me because a statewide early childhood education program would not only prepare children for school, but it would also foster exceptional physical and emotional development. These factors, altogether, are key components in producing healthy, capable, and contributing adults. Many studies have proven that high-quality early childhood education programs have both short- and long-term benefits for children, individuals, and society as a whole. SB1093 and SB 1095 would provide parents with more access to these essential programs and also have the potential to alleviate financial burdens associated with early childhood education costs; currently families in Hawaii pay on average \$720/month per child for preschool. It is important to secure a solid foundation for our children in order to ensure a more successful, healthy, and promising future for us all. Thank you for the opportunity to submit testimony in support of SBs 1084, 1093, and 1095.

-----  
Form Data:

Email 1 (Primary): [racheld.msw@gmail.com](mailto:racheld.msw@gmail.com)

First Name: Rachel

Last Name: Donahue

City: Honolulu  
State: HI  
ZIP Code: 96817