

...Algae Dominated



Erik Conklin

Super Sucker Barges

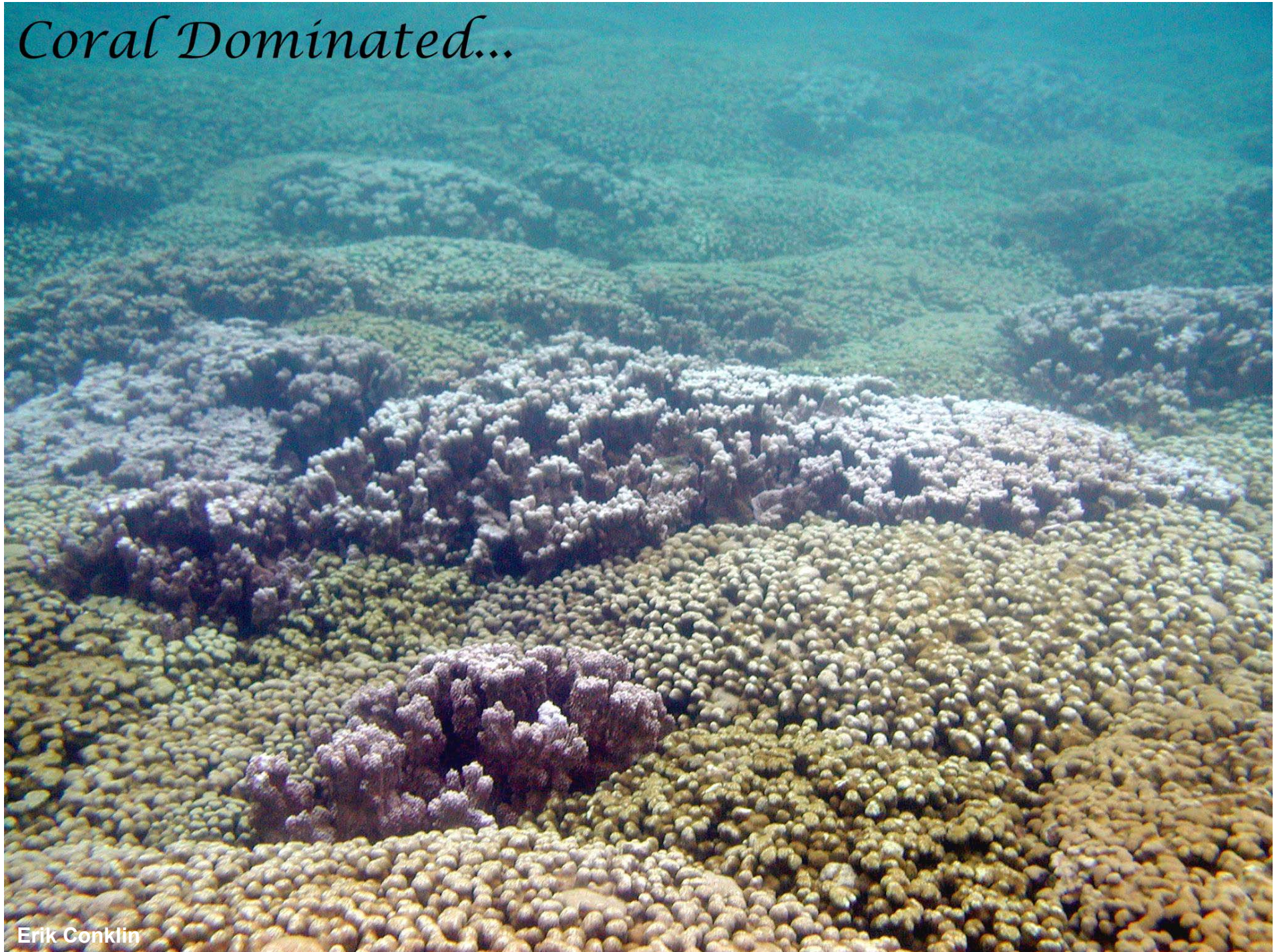


Urchin Outplanting



Collector Urchin, *Tripneustes gratilla*

Coral Dominated...



Erik Conklin

Ballast Water/Hull Fouling



Marine Debris & Invasive Species



Photo: Steve Rumrill, Oregon DFW



Photo: Peter Grillo



Needs & Challenges

- Limited funding/capacity for work on outer islands
 - Hookweed on Maui
 - Snowflake coral on Kauai
 - Gorilla Ogo on Molokai
 - Upside down jellyfish on Molokai and Big Island
 - Port inspectors for hull fouling



Before



Kaunakakai Harbor, Molokai

After





OISC

O'AHU INVASIVE SPECIES COMMITTEE

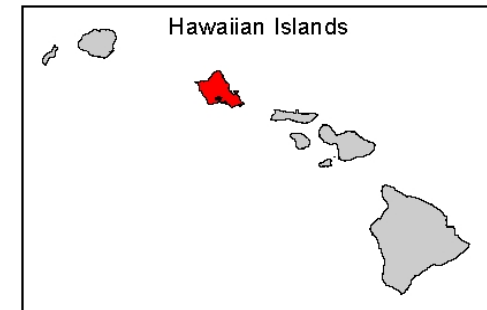
Julia Parish
Operations Manager

Photo: Daniel Clark/USFWS



O'ahu Invasive Species Committee Target Species Actions

July 1, 2011 - June 30, 2012



Plants

- ◆ Bushy beardgrass
- Cane ti
- Cape ivy
- Cissus
- False awa
- Feathertop fountain grass
- Fountain grass
- ◆ Himalayan blackberry
- ◆ Lasiandra
- Miconia
- Pampas grass
- Siam weed
- Spiked pepper

Animal

- ★ Coqui frog

■ Conservation Lands

0 2.5 5 10 Miles



12/31/2012 JYF



OISC Target Plant Species

Priority Target Species

- Miconia
- Cane ti
- Cape ivy
- Fountain grass
- Himalayan blackberry
- Jerusalem thorn
- Lasiandra
- Pampas grass
- Siam weed
- Spike pepper



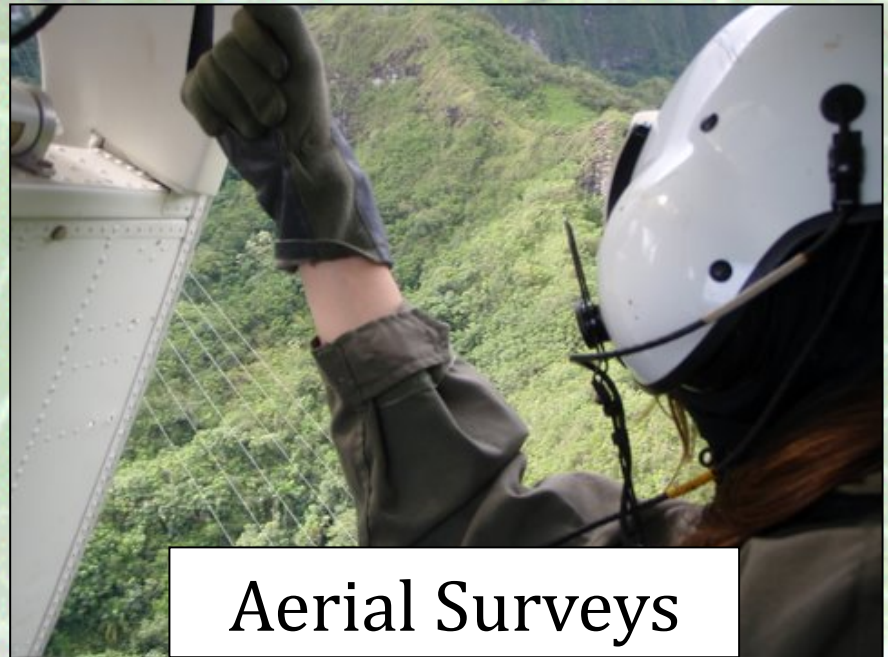
Rapid Response or Public Education Species

- Bay cedar
- Bushy beardgrass
- Cissus
- False 'awa
- Feather top fountain grass
- Feathery senna
- Mexican feather grass





Ground Surveys



Aerial Surveys



Control



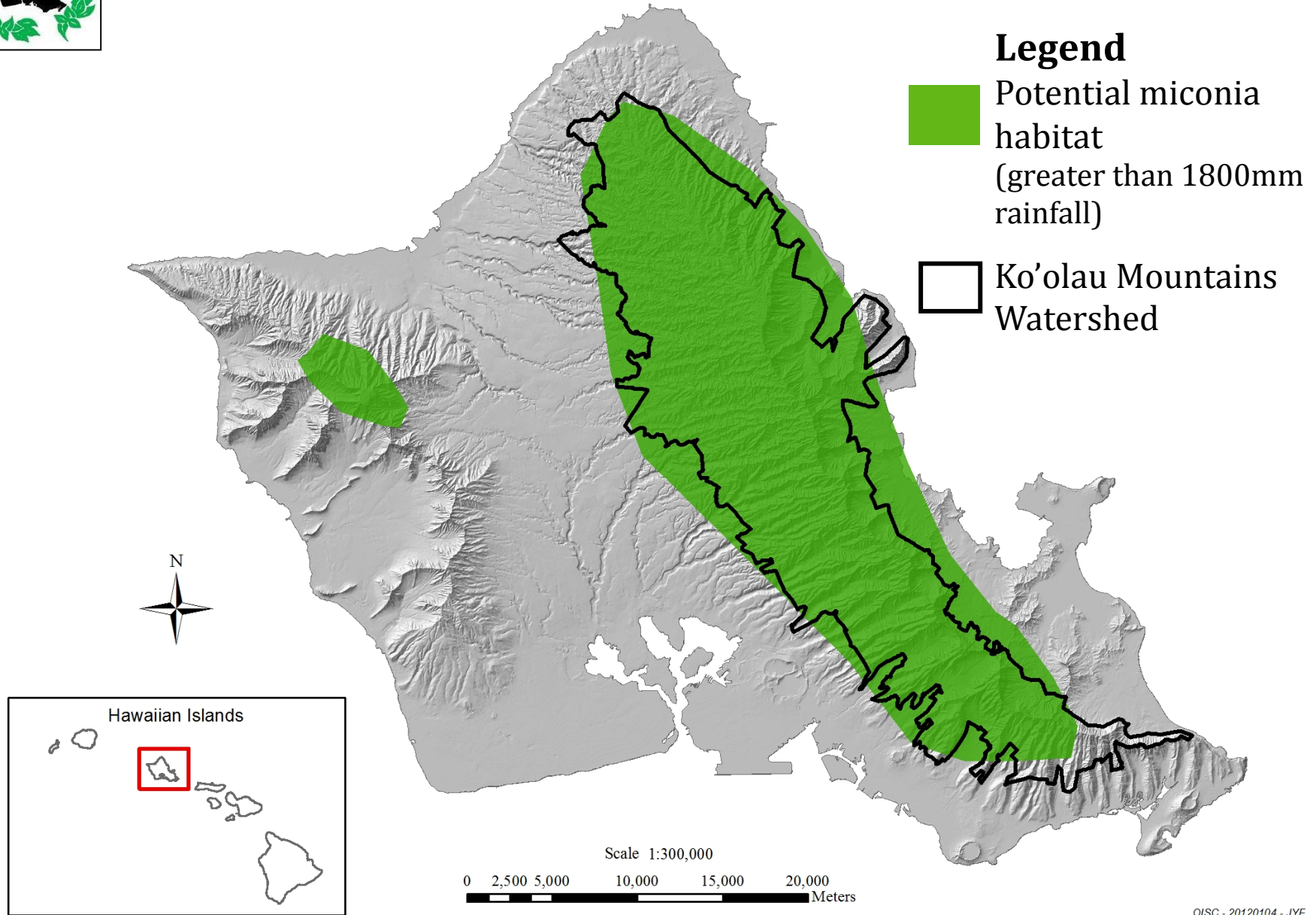
Target:

Miconia calvescens



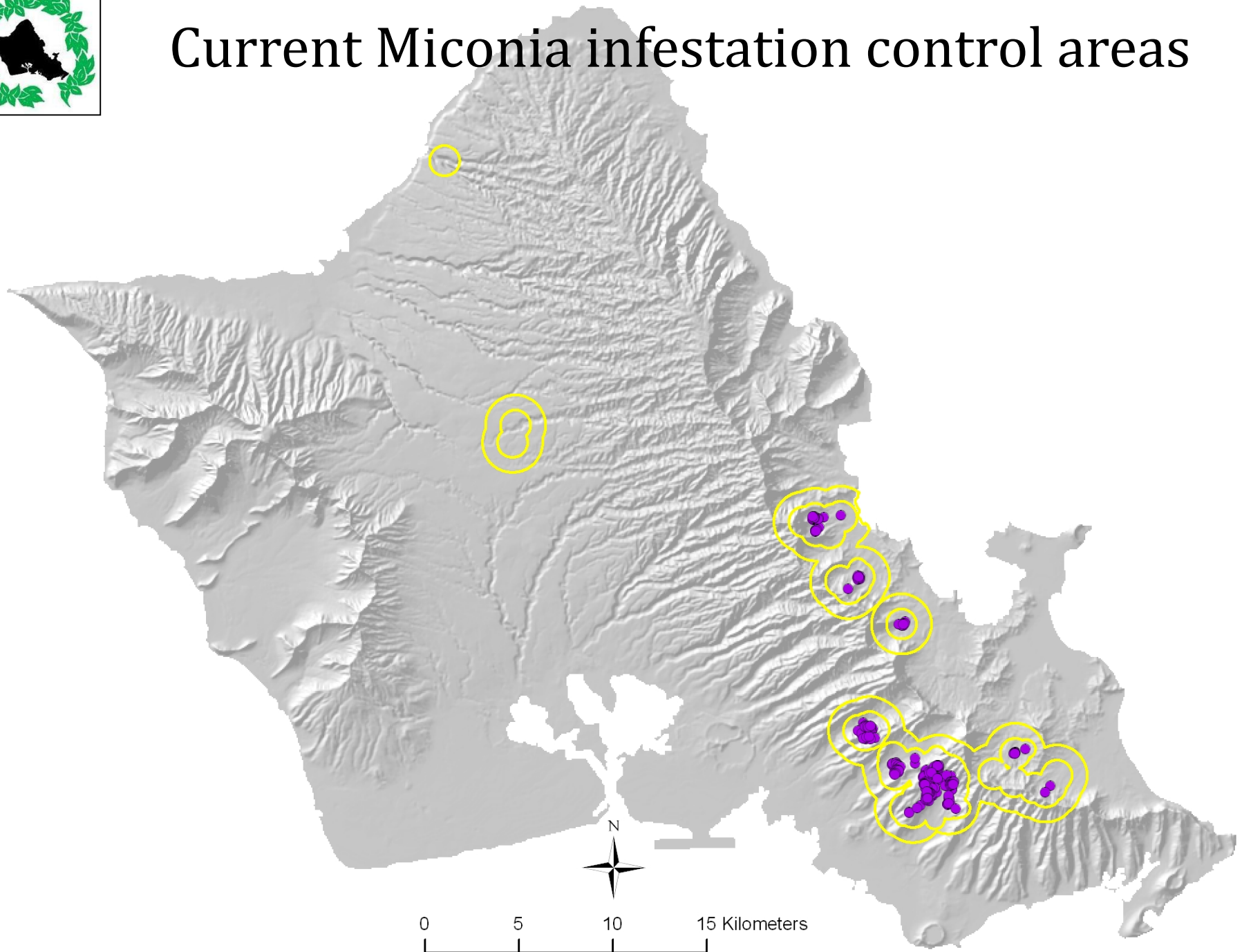


Potential Miconia habitat on Oahu



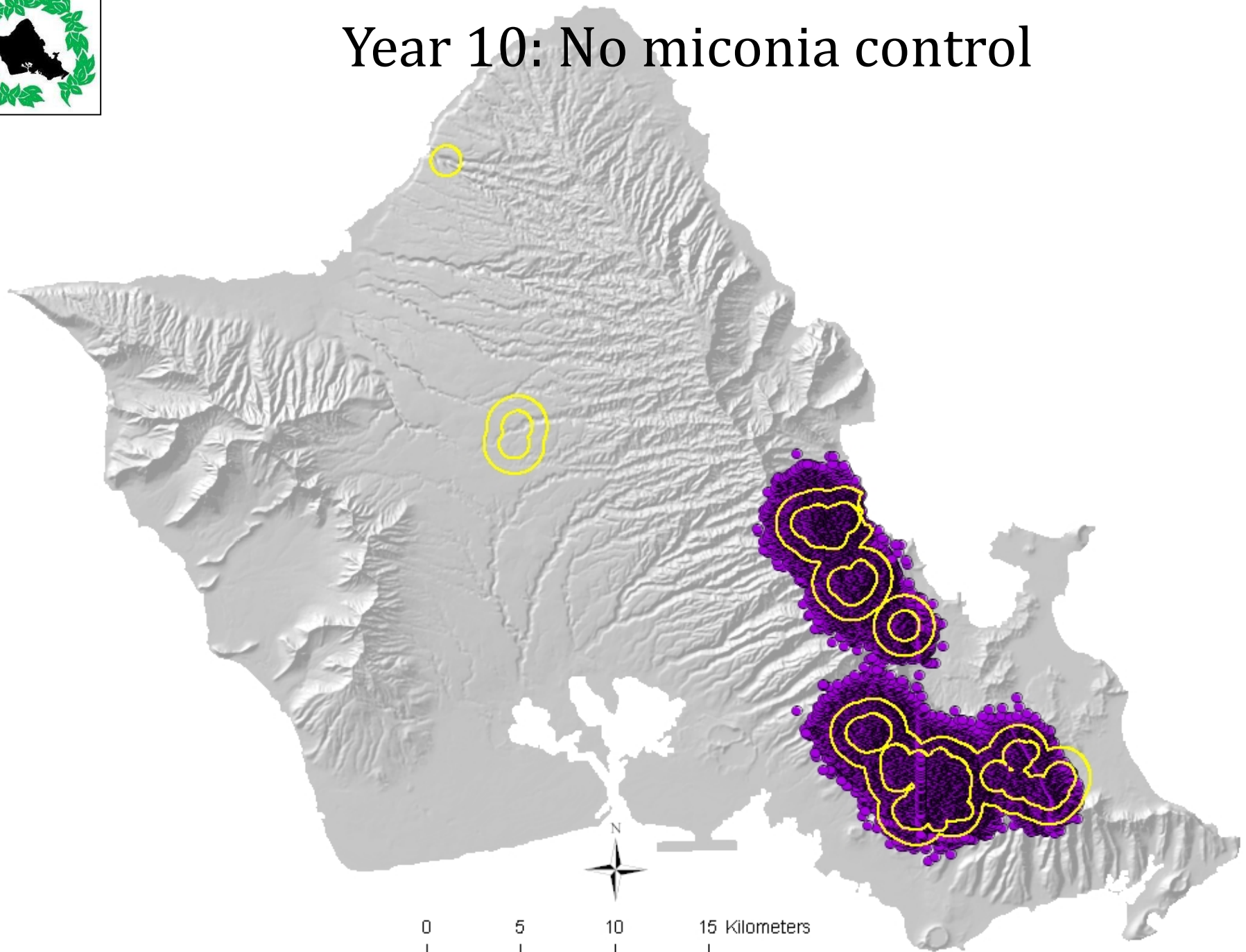


Current *Miconia* infestation control areas





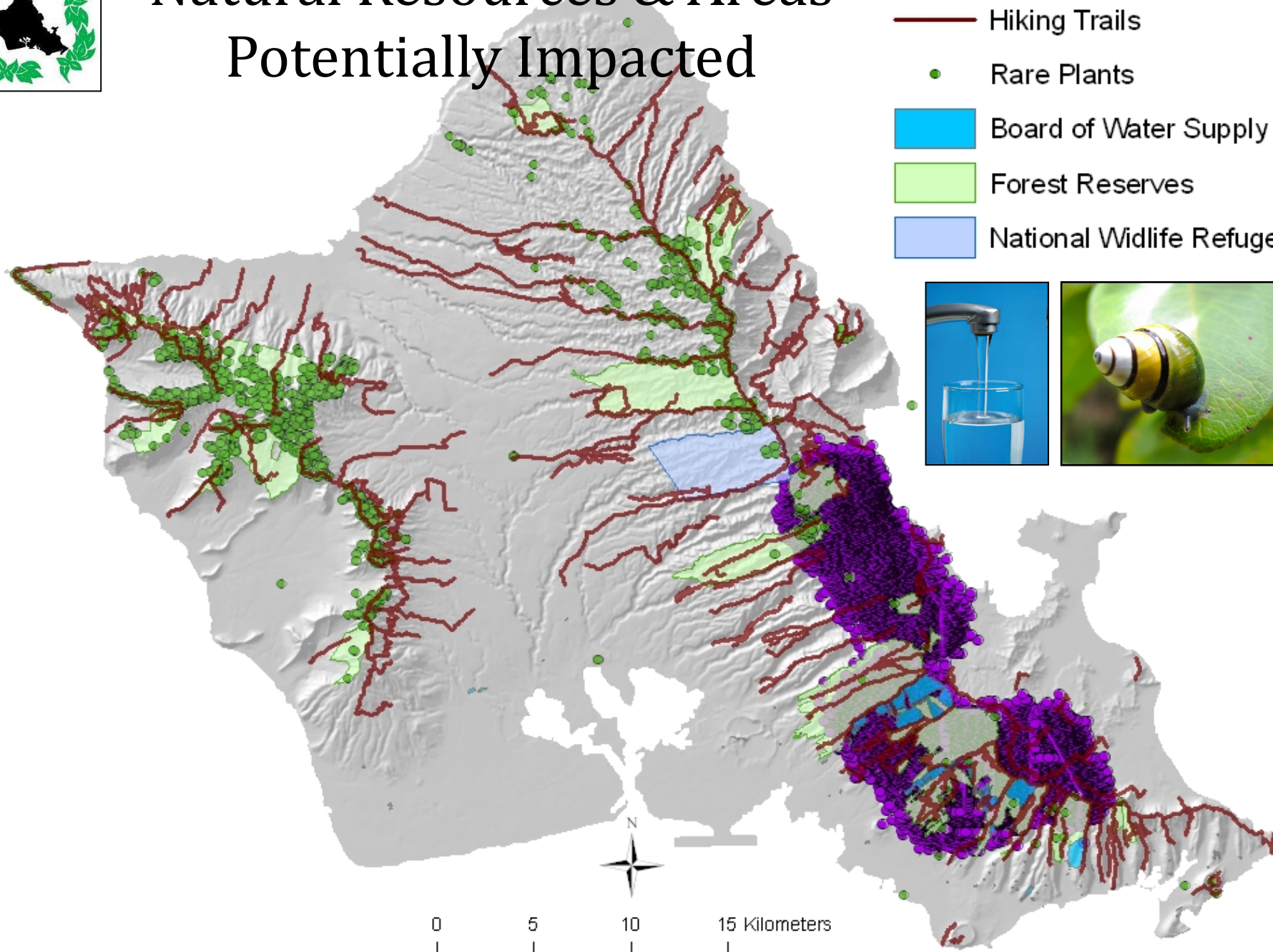
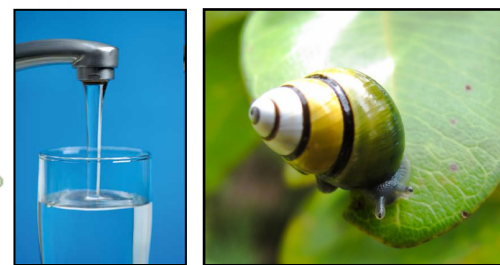
Year 10: No miconia control





Natural Resources & Areas Potentially Impacted

-  Hiking Trails
-  Rare Plants
-  Board of Water Supply
-  Forest Reserves
-  National Wildlife Refuge





Other OISC targets:
Pampas grass

Strategy: Remove
from cultivation
before it spreads into
the forest





Partnerships: Hawaii Department of Agriculture & DLNR DoFAW



Coqui frog
Eleutherodactylus
coqui

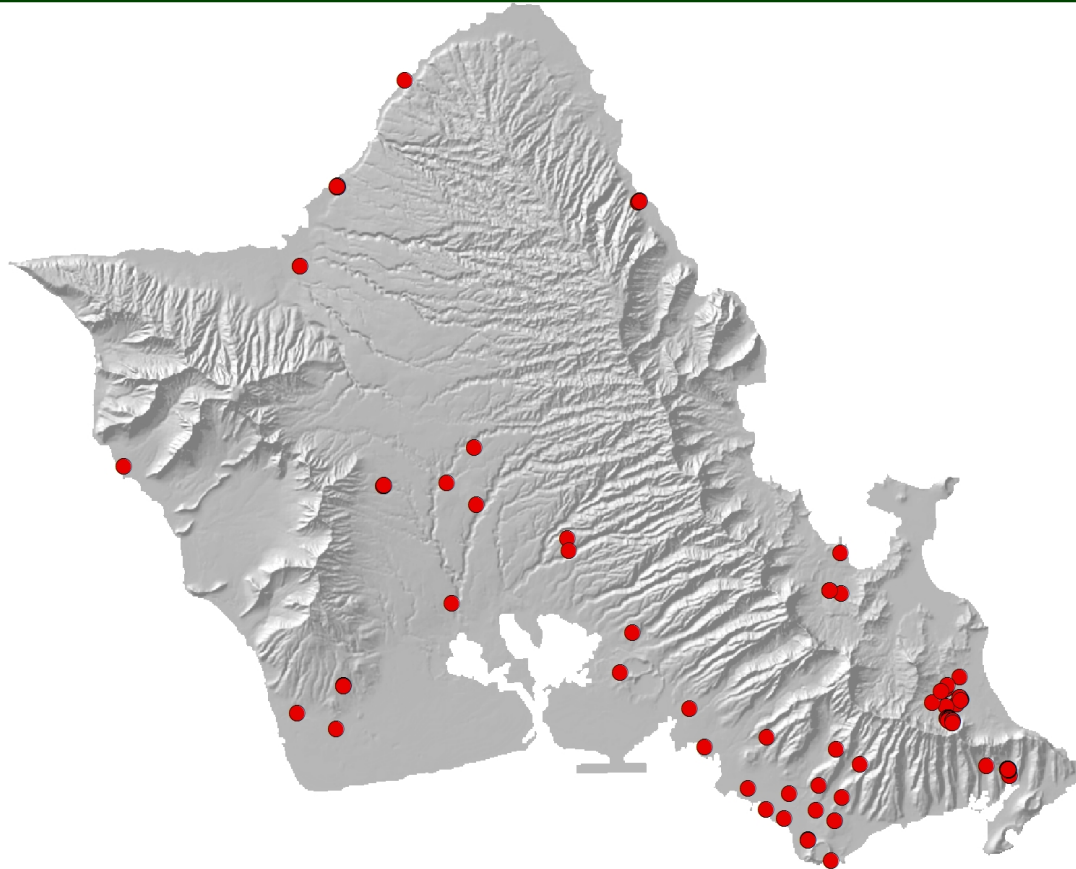


Little fire ant
Wasmannia auropunctata



Coqui frog *Eleutherodactylus coqui*

Coqui Frogs collected by OISC January 2008—December 2012



OISC 20121228 JYF

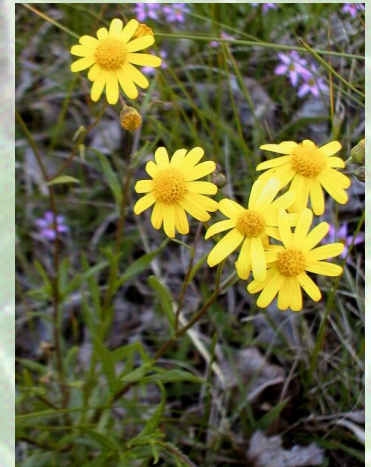
Frogs continue to arrive on O'ahu because:

- Established on Hawai'i Island.
- Plants required to be treated with citric acid, but some frogs survive treatment.
- Frogs arrive on non-plant items that are not treated.



Target Species Eradication Successes

- Fire tree (*Morella faya*) in the Ko'olau mountains
- Fire weed (*Senecio madagascariensis*)
- Cogon grass (*Imperata cylindrica*)
- Smoke bush (*Buddleja madagascariensis*)





OISC Staff & Funding





OISC

O'AHU INVASIVE SPECIES COMMITTEE

Mahalo for
your
support
and
kokua

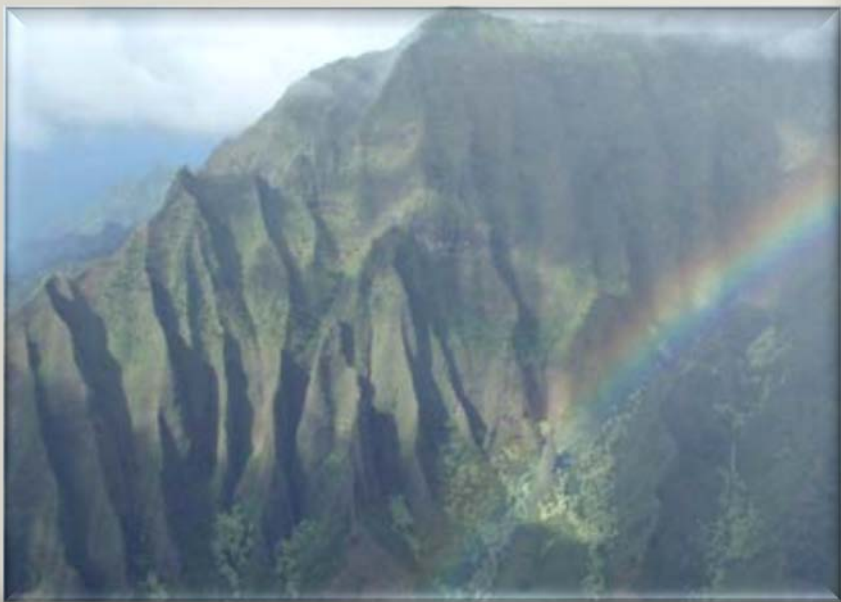
Julia Parish
Operations Manager
808.292.6691
jparish@hawaii.edu
www.oahuiscc.org



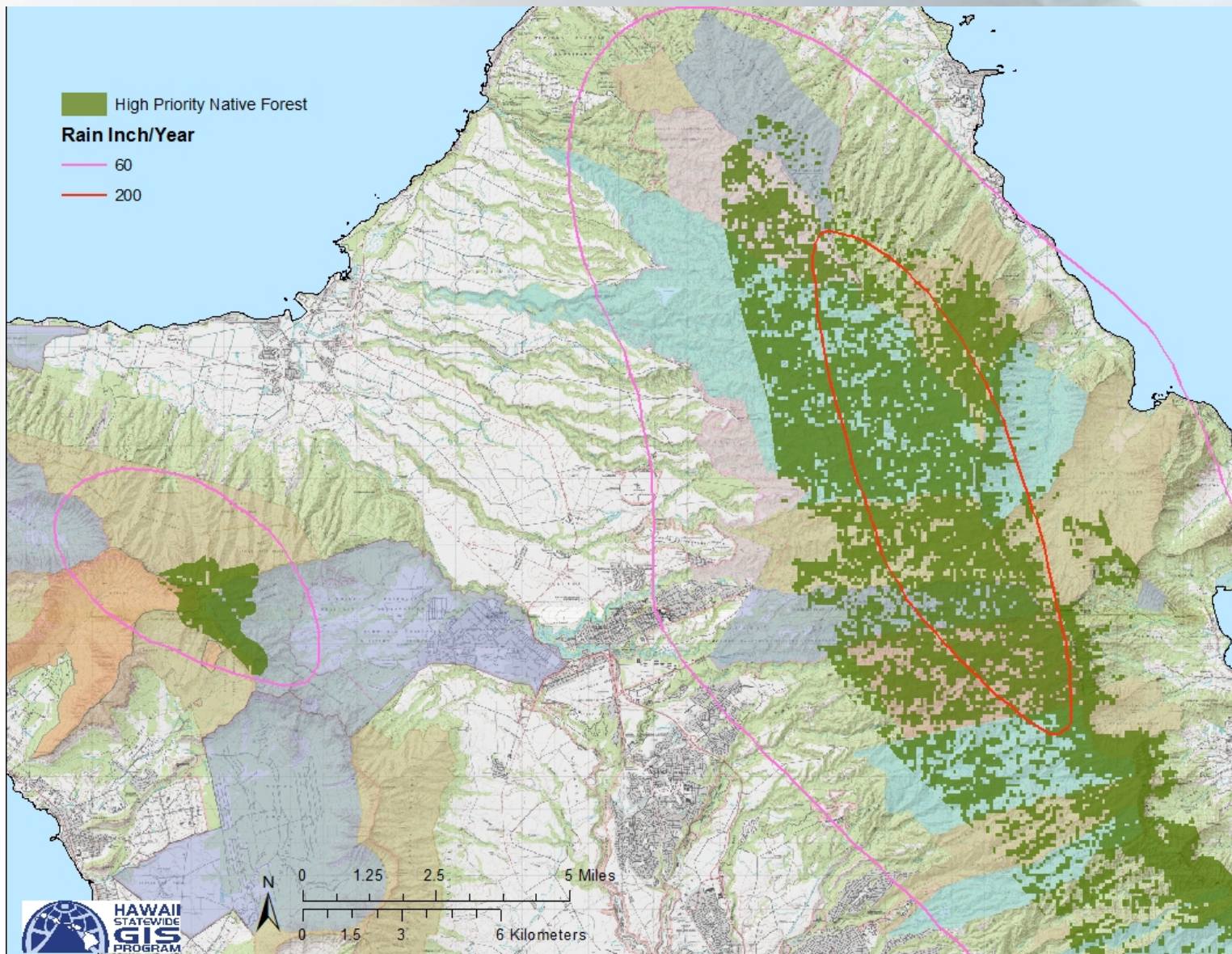
Photo: Daniel Clark

O'ahu Watershed Protection

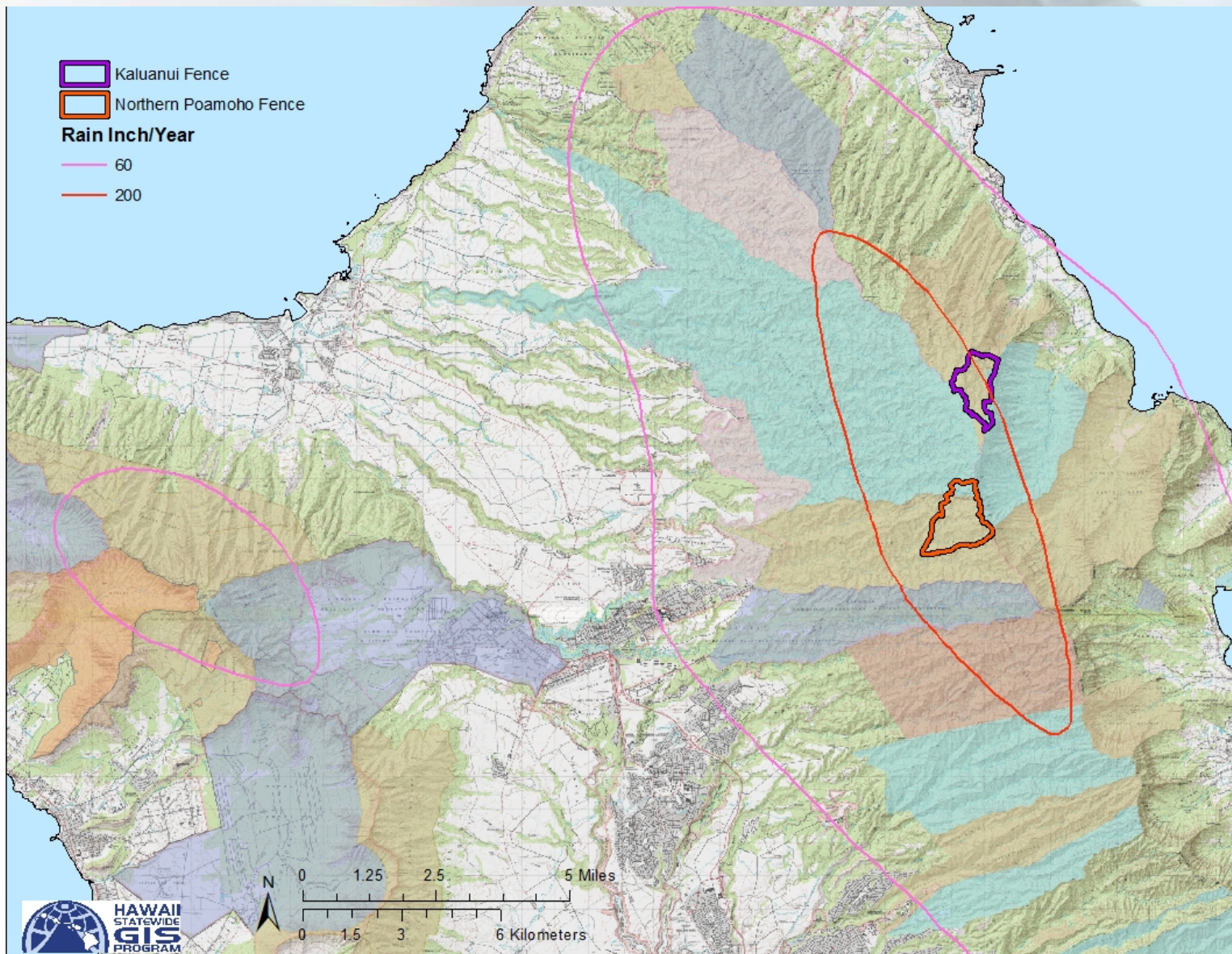




Native Forest and Rainfall



Watershed Initiative Fences – Phase 1



Poamoho Phase 1

- Protects 650 acres of critical watershed on Forest Reserve and Private lands
- \$500,000 State CIP
- \$300,000 US Forest Service Grant
- \$200,000 DOD In-Kind Services
- Home to 38 rare plants and animals.
- Proposed Natural Area Reserve.
- Public Hunting Area and Na Ala Hele Trail.

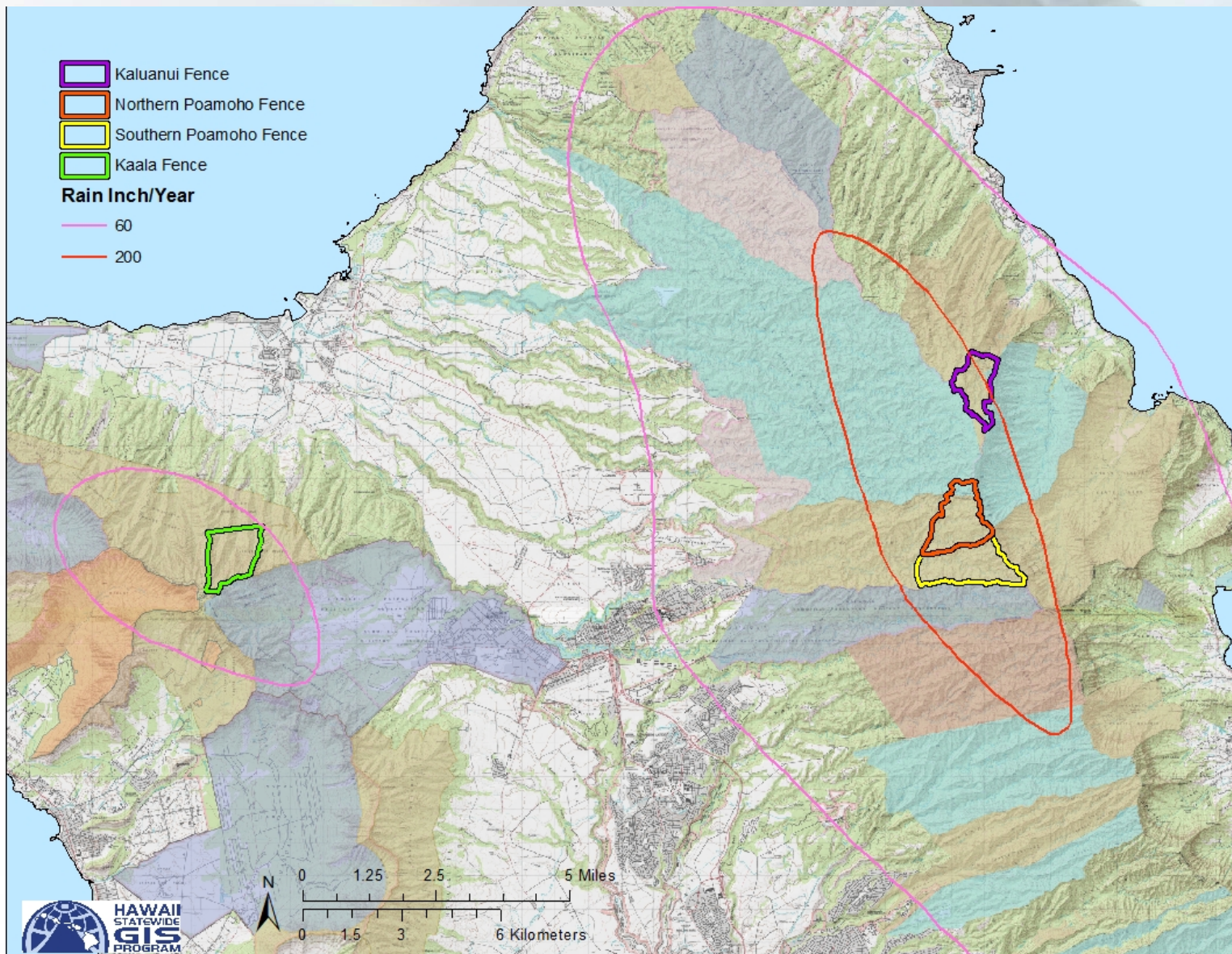


Kaluanui Phase 1

- Protects 450 acres of critical watershed.
- \$200,000 State Watershed Partnership Grant
- \$200,000 US Fish and Wildlife Service Grant
- Home to Oahu's last undisturbed stream.
- Proposed Natural Area Reserve
- Not a designated public hunting area.



Watershed Initiative Fences – Phase 2



Poamoho Phase 2

- 750 acres of critical watershed on Forest Reserve.
- Total Protected Watershed Area at Poamoho :
1,400 acres
- *\$500,000* needed funding

Kaluanui Phase 2

- *\$100,000* needed funding to finish 450 acre unit



Ka'ala Phase 1

- Protects 600 acres of critical watershed.
- *\$500,000* funding needed
- Natural Area Reserve



In Summary

Total funds secured for O'ahu Phase 1 fences:

\$1,400,000 (\$700K State, \$700K Federal)

Total funds needed for O'ahu Phase 2 fences:

\$1,100,000



A lush green valley with a waterfall, framed by a branch with large green leaves and a small striped snail shell.

MAHALO!

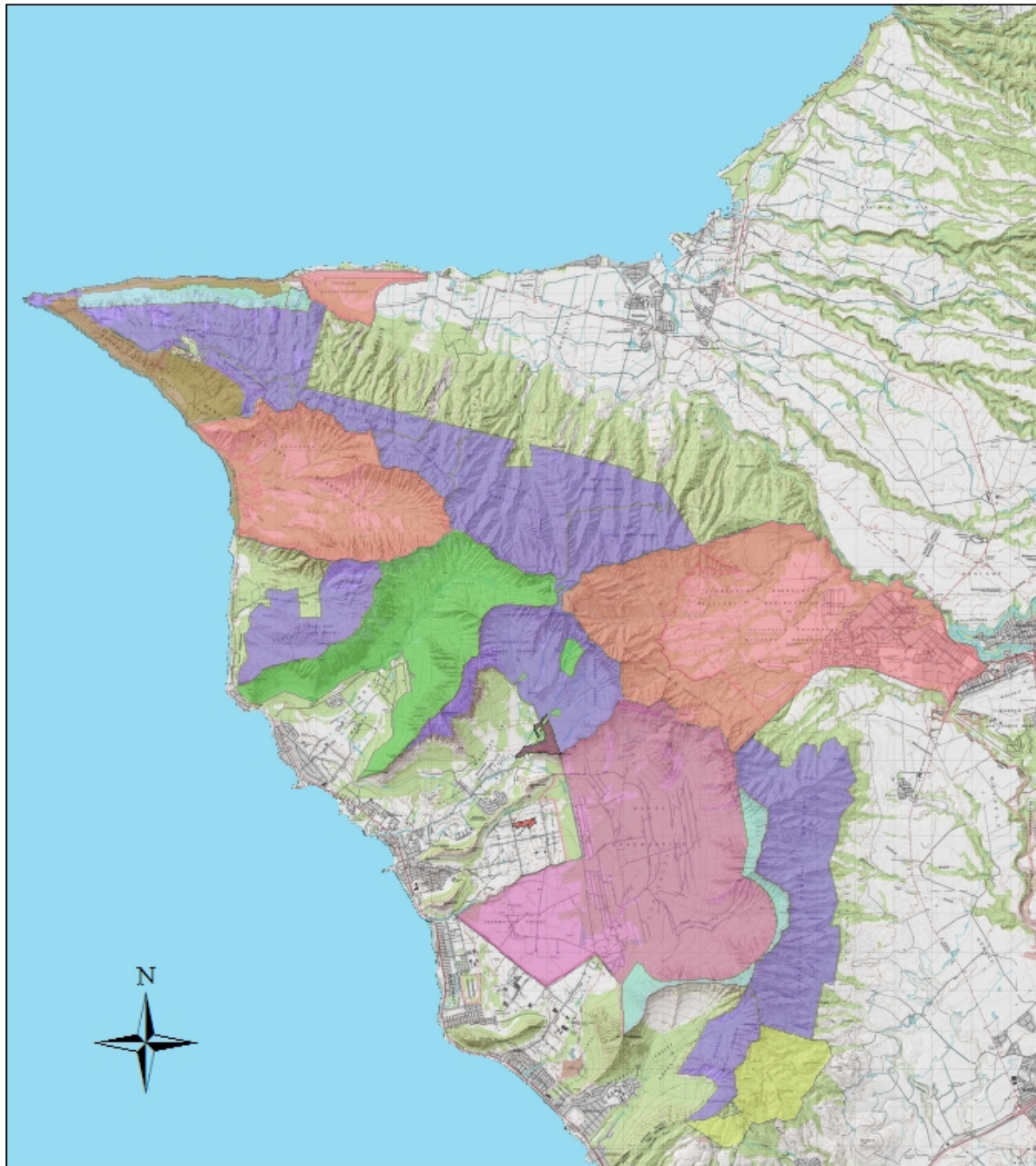
No Kakou Ke Kuleana
The Responsibility is OURS.



WAI'ANAĒ
MOUNTAINS
WATERSHED
PARTNERSHIP

Yumi Miyata
WMWP Coordinator

WMWP Landowners



Legend

WMWP Landowners

- DLNR F&W
- DLNR Land Division
- DLNR State Parks
- Gill Olson
- HBWS
- Kaala Farms
- NAVY
- USAG-HI
- WCRC (Ma'o Farms)

0 1 2 3 4 Miles

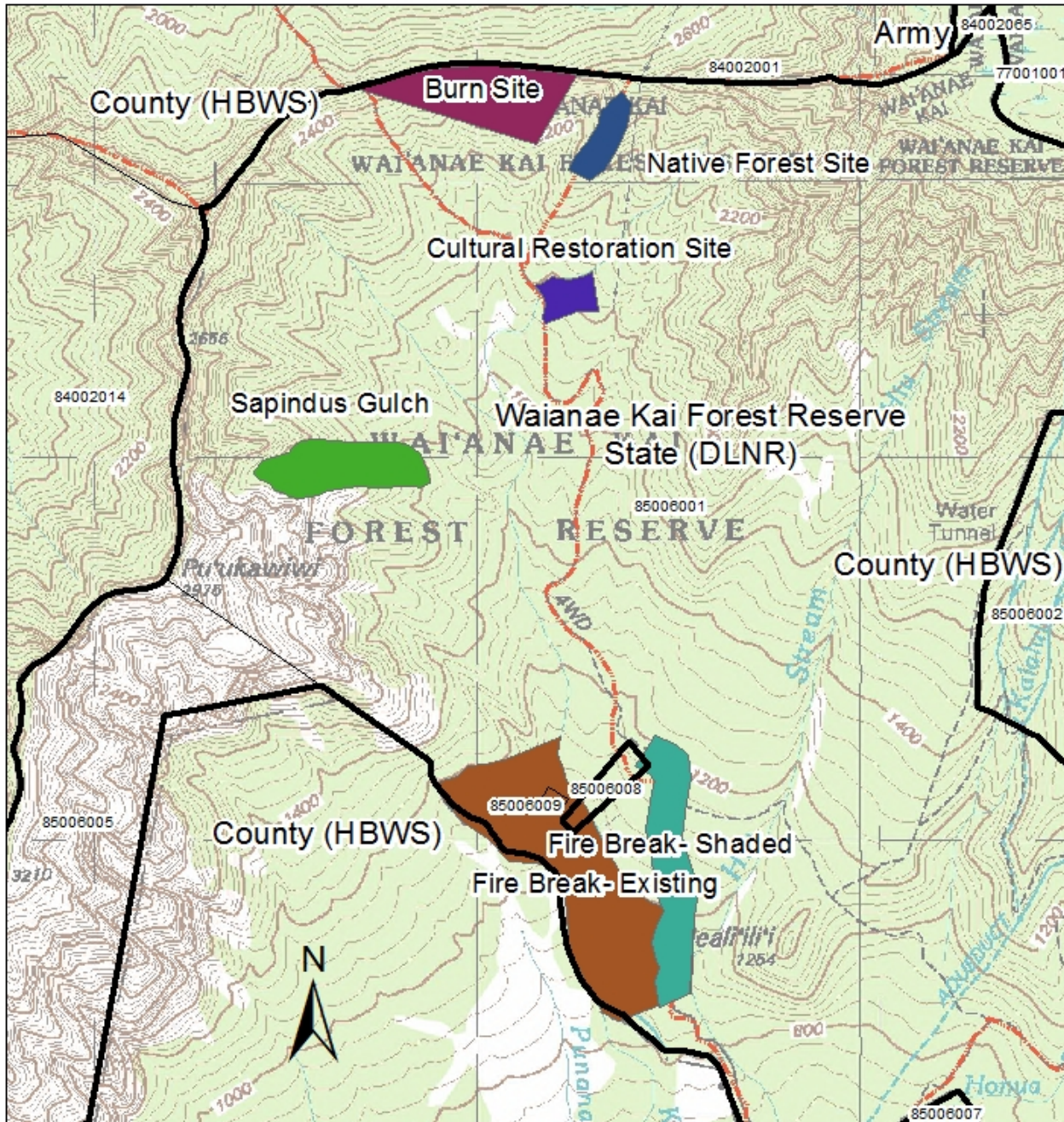


Our Kuleana

- Aerial Imagery analysis on 8,400 acres in WMWP priority areas (invasive species)
- Feral Goat Aerial Survey and Report
- Removal of over 6,000 invasive weeds
- Reforestation Program
- Construction and management of schoolyard nurseries
- Seed collection
- Volunteer programs with middle and high schools on Oahu
- Draft Management Plan
- WMWP Priority Areas

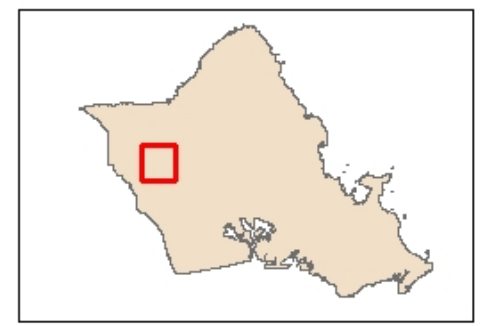
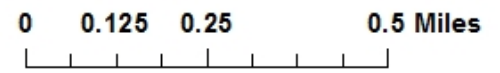


WMWP Project Areas



Legend

- Proposed Outplanting Areas**
- Burn Site
 - Cultural Restoration Site
 - Fire Break- Existing
 - Fire Break- Shaded
 - Native Forest Site
 - Sapindus Gulch
 - WMWP Landowners
 - Oahu Trails

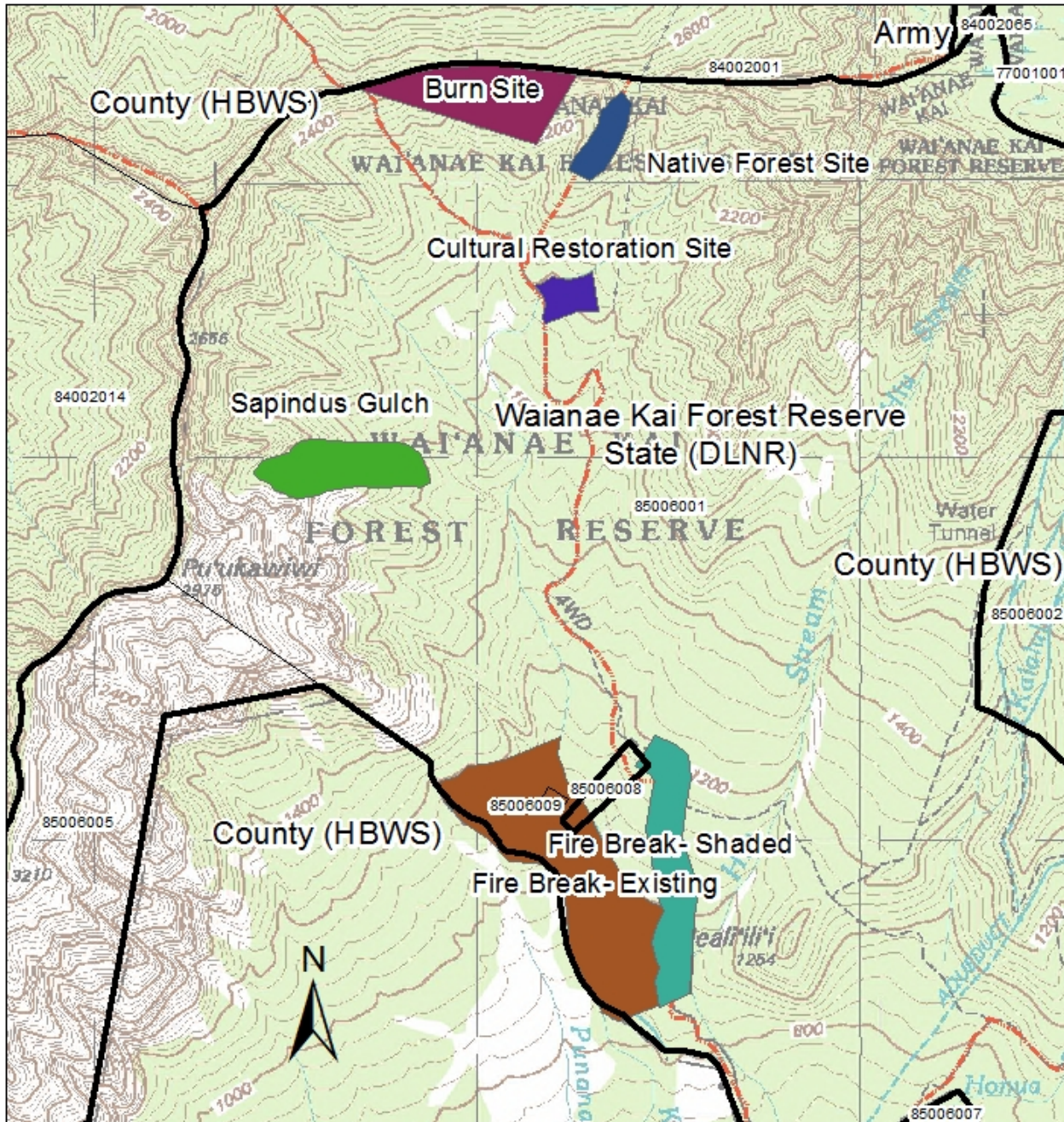


Community Involvement and Voluntary Stewardship

- Schoolyard Nurseries and Service Learning
 - Mililani Middle School
 - Kapolei High School
 - Nanakuli High School
 - Pearl City High School
 - Waianae High School

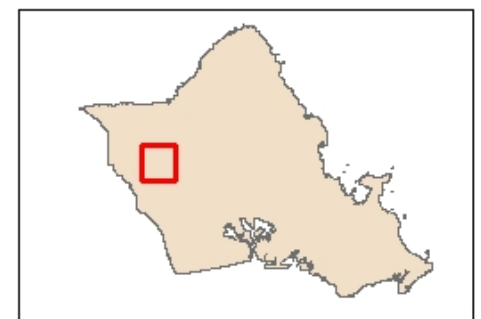
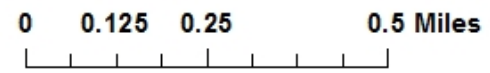


WMWP Project Areas



Legend

- Proposed Outplanting Areas**
- Burn Site
 - Cultural Restoration Site
 - Fire Break- Existing
 - Fire Break- Shaded
 - Native Forest Site
 - Sapindus Gulch
 - WMWP Landowners
 - Oahu Trails

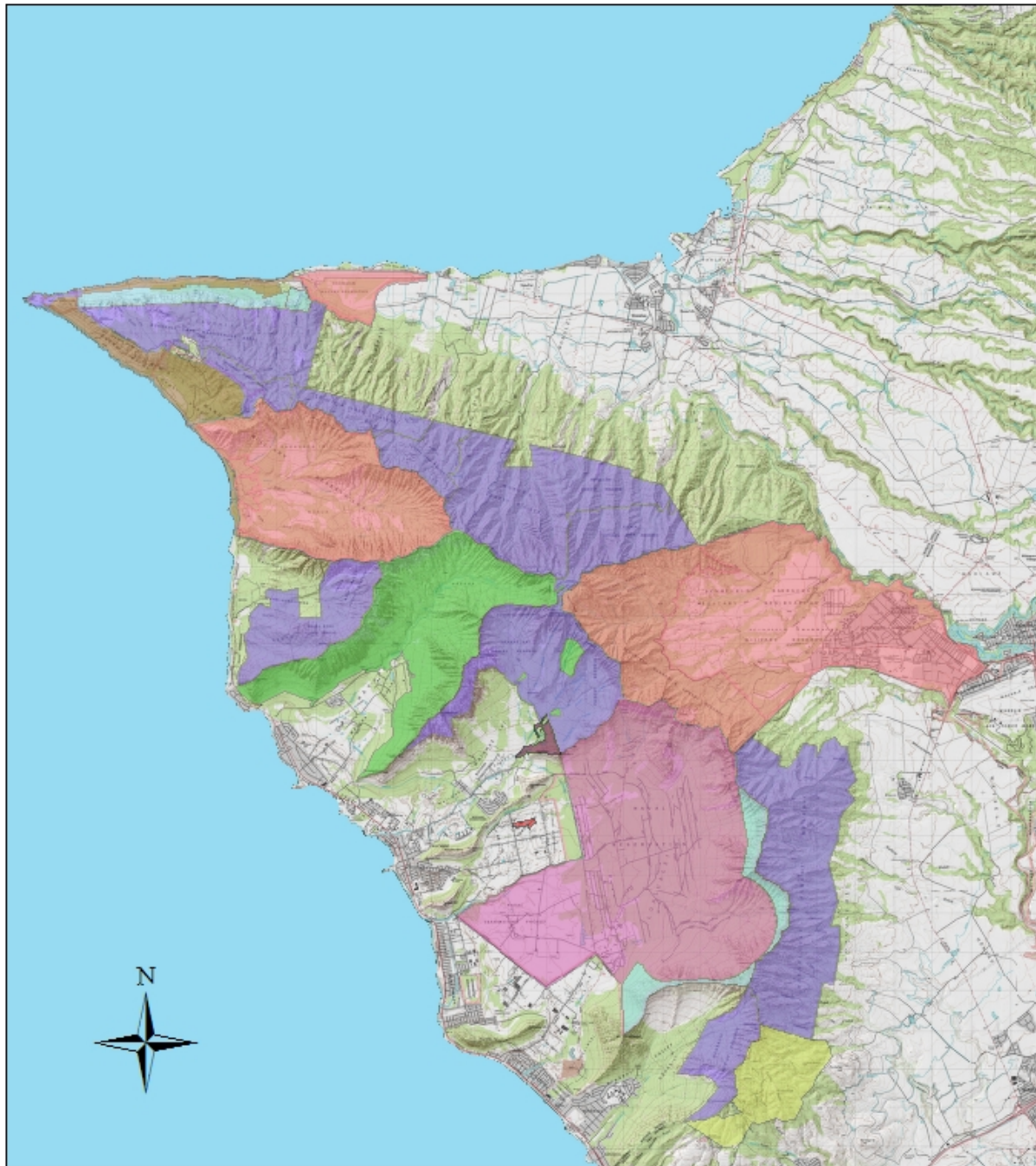


Community Involvement and Voluntary Stewardship

- Ho'omau Ke Ola- "Heal the land, heal the people"
 - Invasive species removal
 - Seed collection
 - Native plant restoration
- Connecting the Navy with the community
 - Invasive species management and native plant restoration
 - Community education and involvement
 - Cultural practitioner access
 - Threatened and Endangered Species Management



WMWP Landowners



Legend

WMWP Landowners

- DLNR F&W
- DLNR Land Division
- DLNR State Parks
- Gill Olson
- HBWS
- Kaala Farms
- NAVY
- USAG-HI
- WCRC (Ma'o Farms)

0 1 2 3 4 Miles

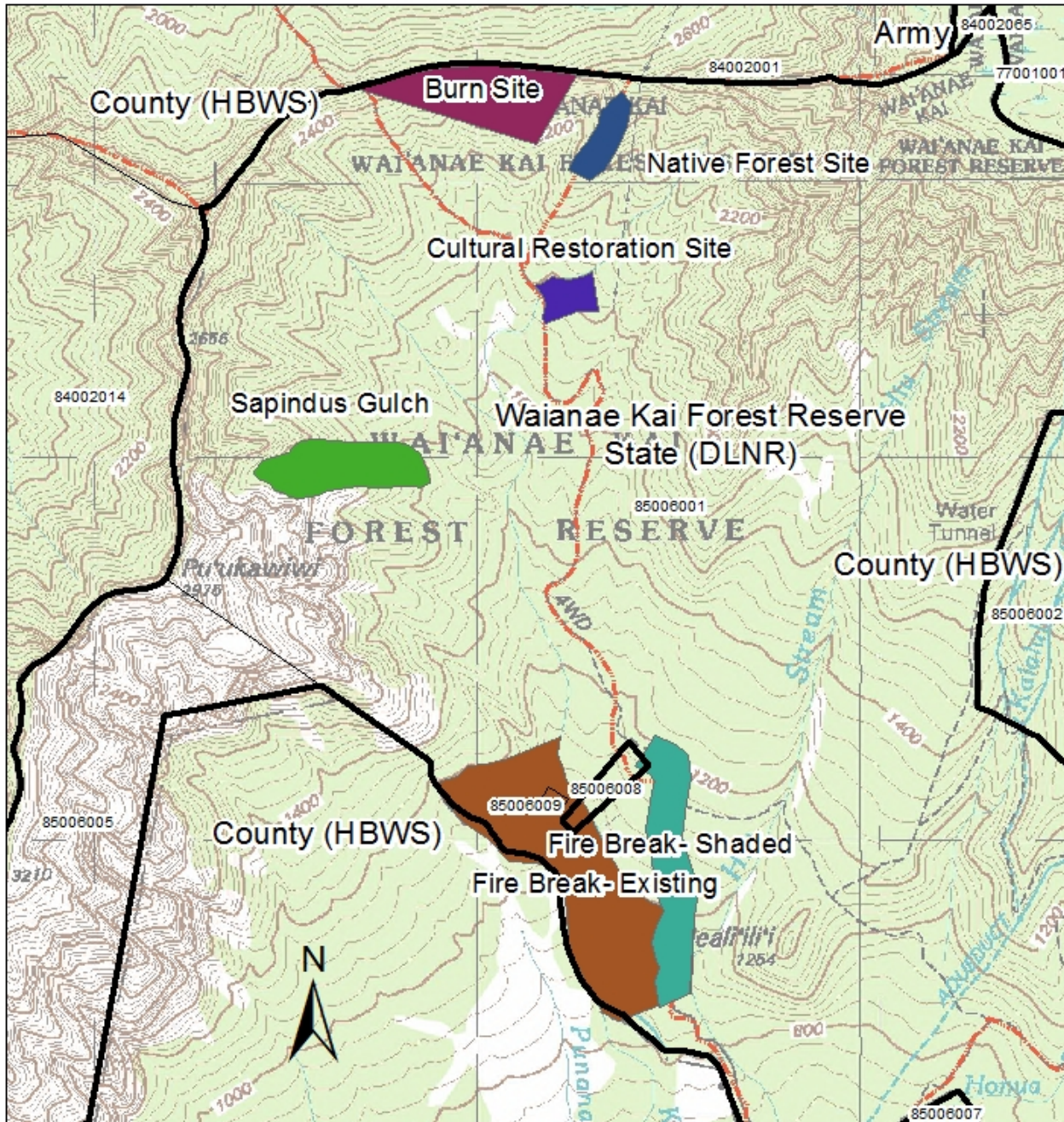


Community Involvement and Voluntary Stewardship

- Cultural Restoration Site
 - Invasive species removal
 - Cultural plant restoration
- Lo'i and Auwai Restoration
 - Invasive species removal
 - Fire mitigation and forest restoration



WMWP Project Areas



Legend

Proposed Outplanting Areas

-  Burn Site
-  Cultural Restoration Site
-  Fire Break- Existing
-  Fire Break- Shaded
-  Native Forest Site
-  Sapindus Gulch
-  WMWP Landowners
-  Oahu Trails

