

NEIL ABERCROMBIE
GOVERNOR



KAREN STREET
CHAIRPERSON

STATE OF HAWAII
STATE PUBLIC CHARTER SCHOOL COMMISSION
1111 Bishop Street, Suite 516, Honolulu, Hawaii 96813
Tel: 586-3775 Fax: 586-3776

FOR: Briefing on the Charter Schools Biennium Budget
DATE: Tuesday, January 15, 2013
TIME: 1:30 p.m.
COMMITTEE(S): Senate Committee on Ways and Means
ROOM: Conference Room 211
FROM: Peter Tomozawa, Commissioner
State Public Charter School Commission

Chair Ige and Members of the Committee:

A. Mission Statement:

The mission of the State Public Charter School Commission ("Commission") is to authorize and monitor the progress of high-quality public charter schools throughout the State.

B. Economic and Fiscal Conditions

The economic downturn continues to impact the charter schools. School enrollment increases each year, but the per pupil funding to the charter schools has declined significantly. Since 2007-08 total charter school enrollment has increased by 3,689 students or 52% and per pupil funding for these students has declined from \$9,063.89 to \$5,950.33, a decrease of \$3,113.56 or 34.4% (see tables below).

Enrollment growth continues to strain the charter schools' ability to provide facilities for both existing and new students. Years of declining per pupil amounts has resulted in charter schools reducing or eliminating programs, relying on fundraising and other sources of revenues to supplement their operating resources and draining funds that were established by the charter schools for specific purposes, often for facilities or program expansion.

Charter Schools Enrollment Trends

Year	Total CS Enrollment	Real Growth Over Prior Year	% Growth Over Prior Year
2004-05	4,964		
2005-06	5,744	780	15.71%
2006-07	5,812	68	1.18%
2007-08	6,131	319	5.49%
2008-09	7,603	1472	24.01%
2009-10	8,098	495	6.51%
2010-11	9,018	920	11.36%
2011-12	9,339	321	3.56%
2012-13	9,820	481	5.15%

Increase since 2008 52%

Charter Schools Per Pupil Funding

Year	Sources					Total	% change
	State General Funds - Operations	State General Funds - Facilities	ARRA A	ARRA B			
2004-05	5,736.00					5,736.00	
2005-06	5,570.44					5,570.44	-3%
2006-07	7,907.41	552.58				8,459.99	52%
2007-08	9,063.89					9,063.89	7%
2008-09	7,837.36					7,837.36	-14%
2009-10	6,037.30		504.84	124.54		6,666.68	-15%
2010-11	5,363.00	197.00	343.79	1,356.28		7,260.07	9%
2011-12	5,725.64	222.50				5,948.14	-18%
2012-13	5,950.18					5,950.18	0.0%
						% PP change since 2008	-34.4%

Performance Measures, Expected Outcomes and Recent Results:

Last session, the Legislature passed Act 130, SLH 2012, establishing a new charter school law that creates a new governance structure for Hawaii's charter school system with clear lines of authority and accountability to foster improved student outcomes, to support new approaches to education and to ensure accountability of public funds. This Act created the Commission with statewide chartering jurisdiction and authority.

Charter schools are now required to enter into a performance-based charter contract with the Commission that clearly sets forth academic, operational and fiscal performance measures.

The Commission is responsible to monitor and report on compliance and outcomes, intervene when appropriate, determine contract renewals and revocations, and apply a rigorous process for new applications to ensure high quality charter schools. The Commission is targeting execution of new charter school contracts for a July 1, 2013 start date.

As part of their unique, independent status, charter schools must effectively manage their financial, academic and operational affairs. The Commission will be using the following three key performance frameworks to accurately and adequately measure school effectiveness:

- Academic performance
- Financial performance and sustainability; and
- Organizational viability

Academic Performance Measures:

The Academic Performance Framework includes measures that allow the Commission to evaluate the school's academic performance or outcomes and was developed in accordance with Act 130. Indicators and metrics for academic performance include student proficiency; student academic growth; achievement gaps in proficiency; growth between major student subgroups; post-secondary readiness; and optional, school specific or mission specific measures.

Financial Capacity Measures:

The financial health and viability of the charter schools will be assessed by the Commission staff by analyzing metrics obtained primarily from information provided in the charter schools audited financial statements. The establishment of the Financial Performance Framework should be finished within the next few months. Compliance with fiscal reporting deadlines has continued to improve in the Charter School system. All 31 schools have undergone an independent financial audit for fiscal year 2011-12 and 30 of the 31 have submitted these reports to the Commission. The remaining audit report is anticipated to be received by mid-January. Charter schools are also required to submit periodic budget, financial and enrollment reports to the Commission.

Organizational Viability Measures:

The Organizational Performance Framework will include measures related to whether the charter school is meeting legal and compliance-related standards pertaining to the school's education program, financial management, governance, reporting, student rights, personnel, health and safety, and facilities.

Public Charter School Commission:

To implement the Act and transition to the new charter school system, the following have been accomplished since July 2012:

- Board of Education (BOE) appointed the Commission's inaugural members;

- Pursuant to Act 131, SLH 2012, the BOE contracted with a transition coordinator (National Association of Charter School Authorizers or NACSA) to assist with the implementation of Act 130, SLH 2012;
- NACSA conducted review of functions and developed Commission staffing plan and proposed Commission operating budget for FB 2013-2015;
- NACSA drafted the charter contract template and developed Hawaii performance frameworks (academic, financial and organizational) with drafts now circulating with the charter schools to obtain feedback before Commission approval;
- NACSA drafted administrative rules which are now being reviewed;
- NACSA assisted the Commission in implementing a rigorous process to evaluate new charter school applications;
- Commission has required the School Boards to reconstitute and amend their bylaws in accordance with the Act; and
- Commission is now recruiting for its first Executive Director.

C. Federal Funds

The Federal Budget Contract Act sequester would result in an estimated 8.2% cut for non-defense discretionary funding including most education programs such as Title I, Part A; Title II, Part A; Title III; IDEA, Part B; and Impact Aid.

Title I, Part A

Title I, Part A funds directly to schools would be reduced by approximately \$110,000, which will offset slightly by a recalculation in the way Title I funds will be distributed to all schools beginning in 2013-14. Title I, Part A SEA/LEA set-asides will be affected as well with cuts of approximately \$8,700 for Professional Development (PD), \$7,500 for School Improvement (SI), \$7,000 for Resource Teachers (Linker), \$1,770 for State Administration, and \$87 for Parent Involvement (PI). Cuts to PD, SI, and PI set-asides will result in reduced services and support for schools. Funds for State Administration and Resources Teacher would need to be replaced by general funds as current funding is already insufficient to cover these costs.

Title II, Part A

Reduced Title IIA funds in the amount of approximately \$30,750 will mean fewer opportunities for teacher professional development, and reduced incentive for non-highly-qualified teachers to become highly qualified under No Child Left Behind.

Title III

Reduced Title III funds in the amount of \$3,280 will impact two programs: after-school classes for ELL students, and professional development for staff working with these students.

IDEA, Part B

Cuts to IDEA, Part B could result in loss of special education personnel. Although not administered by this department, cuts to IDEA, Part B would have a significant impact on

schools budgets as schools would need to hire additional personnel to serve students with disabilities.

Impact Aid

Impact Aid estimated reductions of approximately \$185,000 (based on assumed 7.6% cut) will directly affect all charter schools. The funds come with no programmatic restrictions and so are used to supplement a school's general funds. Any reduction in these funds will need to be offset with general funds, or force further school-level cuts at a time when many schools are struggling.

Other Federal Funds

Currently CSAO receives only state general funds for a half-time McKinney-Vento coordinator; therefore a reduction in federal funds won't affect this, despite it being a federal program. Additionally, cuts to other education programs not administered by this department including Migrant Education, Career and Technical Education, and Race to the Top would result in loss of supports and services for charter schools and students.

D. Budget Request

The original budget and capital improvement projects request for the charter schools was composed of funding for the following five elements:

1. Schools Operations;
2. School facilities costs;
3. Commission's operational expenses;
4. Charter school audits; and
5. Workers' Compensation Administration.

School Operations

With respect to the charter school operational funding, and based on the Governor's budget decisions, the outlook for charter schools operational funding is improving. Based on the Governor's decision, projected future enrollment increases are funded and per pupil funding will increase over the biennium budget years (BY2013-15). These projections are provided by the schools to the commission staff for review. The total amount of added funding for these purposes is equal to \$7,025,148 in fiscal year 2013-14 and \$13,367,479 in fiscal year 2014-15. Most of this increase in funding will go to fund higher charter school enrollments and new charter schools. Overall, charter school enrollments are projected to increase to 11,431 in FY14 and 12,222 in FY15. Per pupil amounts are also projected to increase (based on the statutory formula to \$6,131 in FY14, a 3% increase; and to \$6,253 in FY15, a 2% increase.

Recently, the Commission approved the applications for two new charter schools, effective with the 2013-14 school year. The combined projected enrollments of these two schools are

191 students in FY14 and 267 students in FY15. In addition one more charter school application decision is still pending. The Governor's Budget Decision includes these enrollment projections.

Facility Costs

Currently, charter schools must pay for the costs of their facilities from operational funds. The request that was submitted applied a "needs based" approach to facilities funding. Charter schools submitted estimates of their future facilities related costs. These costs were analyzed and adjusted by the Commission staff to include only costs that were directly related to securing facilities necessary for the operation of the school (i.e. rent or lease of buildings and grounds, leasehold improvements, major maintenance or improvement of facilities needed for the safety and security of students and staff). Based upon this analysis the Commission approved a facilities funding request of \$7,556,758 in FY 14 and \$7,868,889 in FY 15. Further analysis by Commission staff led to the discovery that these amounts should be revised to \$7,183,180 and \$7,495,311, respectively. The facilities request was not included in the Governor's decision for funding.

Commission Operational Expenses

In the past, the Charter School Review Panel/CSAO's operations were funded as a percentage of the overall charter schools' per-pupil appropriation (up to 2% of the total). The Commission is now requesting a separate line item in the Executive Budget to provide for the operations and staffing of the Commission. The proposed budget request reflects the positions and other expenses needed to implement Act 130, SLH 2012. Most notably, the staffing plan and budget reflect the additional work of the Commission's authorizing/accountability functions as shown in the following new positions: Deputy Director of Performance, Academic Performance Manager, Academic Performance Specialist, Organizational Performance Manager, Organizational Performance Specialist, Financial Performance Manager and Financial Analyst. These accountability positions are based on model organizational structures from authorizers in other jurisdictions.

The remaining operational positions will carry out Commission office functions, similar to all other government agencies, and act as the point of contact and central coordinating entity between the charter schools and the DOE and other government agencies, as required by Act 130, SLH 2012.

Charter School Audits

Each charter school undergoes an annual independent financial audit. The users of these audit reports are generally external to the charter school (Commission, DOE, DAGS, etc.). Although the DOE does undergo an annual financial audit, because of economies of scale the cost to the DOE is considerably less (on a per pupil basis) than is the cost to charter schools (not every DOE school is subject to audit every year, the auditors test a sample of public schools). The original request for this item estimated the cost of the audits to be \$17,000 per school for a total request of \$629,000 (assumed 37 charter schools). Since that time the Commission staff

has refined this amount, based on actual costs submitted by the charter schools to average \$15,500 per charter school and the total number of charter schools to be 34 for a revised request of \$527,000. This request was not included in the Governor's decision for funding.

Worker's Compensation Administration

The original budget request included a request to fund the cost of Workers' Compensation Administration as provided for in statute. Per the statute the Department of Human Resource Development (DHRD) is required to provide Workers' Compensation Administration services to the charter schools. For this service the charter schools pay .07% of the annual charter school appropriation to DHRD. In the past, the CSAO has paid this amount from the CSAO's operational funds as part of its 2% administrative costs taken from the per-pupil funding. This request was not included in the Governor's budget decision.

On behalf of the Public Charter Schools, mahalo for the opportunity to discuss these issues with you and mahalo for your continuing support of the public charter schools of Hawaii. We remain ready, willing and able to work with you to find innovative ways to provide the funding and opportunities for the education of Hawaii's students at public charter schools.

Department of Education - Charter Schools
Prioritized List of Functions

Table 1

<u>Priority</u>	<u>Description of Function</u>	<u>Activities</u>	<u>Prog ID(s)</u>	<u>Statutory Reference</u>
1	Instructional Services including Kindergarten through Grade 12 classroom instruction for regular students and special education services for students with disabilities.	Primarily direct classroom instruction including instructional technology services, textbooks and instructional materials and professional development for instructional staff.	EDN600	302B
2	Pupil Services	Primarily the following activities - home-to-school transportation, food services, counseling, health services and student athletics.	EDN600	302B
3	Operation & Maintenance of Facilities	Utilities, repair and maintenance, custodial services, rent/lease of facilities.	EDN600	302B
4	Administration	Local school board activities, school leadership, business/accounting services, personnel services, information management and technology services (non-instructional).	EDN600	302B
5	Community Services	Dissemination activities, community outreach activities.	EDN600	302B
6	Accountability and Applicant Services	Development and improvement of performance contracts and accountability standards for charter schools. Monitoring the compliance of charter schools to the terms and conditions of the contracts and standards. Implementation of appropriate interventions for charter schools not meeting standards. Creation of an application process for potential new charter schools including an evaluation framework for applications. Evaluating applicants vis-a-vis the evaluation framework.	EDN60X	Act 130

Department of Education - Charter Schools
Department-Wide Budget Summary

Table 2

Fiscal Year 2013				
Act 106/12 Appropriation	Restriction	Emergency Appropriation	Total FY13	MOF
\$ 61,757,919.00			\$ 61,757,919.00	A
			\$ -	
			\$ -	
\$ 61,757,919.00	\$ -	\$ -	\$ 61,757,919.00	Total
Fiscal Year 2014				
Act 106/12 Appropriation	Reductions	Additions	Total FY14	MOF
\$ 63,062,494.00		\$ 8,260,262.00	\$ 71,322,756.00	A
			\$ -	
			\$ -	
\$ 63,062,494.00	\$ -	\$ 8,260,262.00	\$ 71,322,756.00	Total
Fiscal Year 2015				
Act 106/12 Appropriation	Reductions	Additions	Total FY15	MOF
\$ 63,062,494.00		\$ 14,602,593.00	\$ 77,665,087.00	A
			\$ -	
			\$ -	
\$ 63,062,494.00	\$ -	\$ 14,602,593.00	\$ 77,665,087.00	Total

Department of Education - Charter Schools
Funding by Program ID

Table 3

Prog ID	Program Title	MOF	As budgeted in Act 106/12 (FY13)			Governor's Submittal (FY14)				Governor's Submittal (FY15)			
			Pos (P)	Pos (T)	\$\$\$	Pos (P)	Pos (T)	\$\$\$	Percent Change of \$\$\$\$	Pos (P)	Pos (T)	\$\$\$	Percent Change of \$\$\$\$
EDN600	Charter Schools	A	-	-	\$ 61,757,919	-	-	\$ 70,087,642	13.5%			\$ 76,429,973	23.8%
EDN600	Commission Operating Bu	A			\$ -	15.00		\$ 1,235,114	n/a	15.00		\$ 1,235,114	n/a

Department of Education - Charter Schools
Budget Decisions

Table 4

Prog ID	Description	MOF	Initial Department Requests						Budget and Finance Recommendations						Governor's Decisions					
			FY14			FY15			FY14			FY15			FY14			FY15		
			Pos (P)	Pos (T)	\$\$\$	Pos (P)	Pos (T)	\$\$\$	Pos (P)	Pos (T)	\$\$\$	Pos (P)	Pos (T)	\$\$\$	Pos (P)	Pos (T)	\$\$\$	Pos (P)	Pos (T)	\$\$\$
EDN600/JA	Per Pupil Operating Funding Enrollment Adjustment	A			\$ 6,045,674			\$ 10,827,807			\$ 6,960,150			\$ 13,296,624			\$ 7,025,148			\$ 13,367,479
EDN600/JA	Needs-based facilities request	A			\$ 7,556,758			\$ 7,868,889			\$ -			\$ -			\$ -			\$ -
EDN600/JA	Charter Schools Audit Costs	A			\$ 629,000			\$ 629,000			\$ -			\$ -			\$ -			\$ -
EDN600/JA	Commission Operating Budget	A	15.00		\$ 1,235,114	15.00		\$ 1,235,114	15.00		\$ 1,235,114	15.00		\$ 1,235,114	15.00		\$ 1,235,114	15.00		\$ 1,235,114
EDN600/JA	Workers' Comp. DHRD Admin Fee	A			\$ 48,376			\$ 51,723			\$ -			\$ -			\$ -			\$ -

Department of Education - Charter Schools
Proposed FY14 and FY15 Reductions

Table 5

<u>Prog ID</u>	<u>Description of Reduction</u>	<u>Impact of Reduction</u>	<u>MOF</u>	<u>FY14</u>			<u>FY15</u>			<u>Carry-over?</u> <u>(Y/N)</u>
				<u>Pos (P)</u>	<u>Pos (T)</u>	<u>\$\$\$\$</u>	<u>Pos (P)</u>	<u>Pos (T)</u>	<u>\$\$\$\$</u>	
	None									

Department of Education - Charter Schools
Proposed FY14 and FY15 Additions

Table 6

Prog ID	Request Category	Prog ID Priority	Dept-Wide Priority	Description of Addition	Explanation	MOF	FY14			FY15		
							Pos (P)	Pos (T)	\$\$\$	Pos (P)	Pos (T)	\$\$\$
DN600/J	FE	1	1	Per pupil operating funding enrollment adjustment	Adjustment to provide funding for increasing enrollment in the charter schools and the changes based on the funding formula in statute	A			\$ 7,025,148			\$ 13,367,479
DN600/J	AR	2	2	Needs based facilities request	This request will provide funding to the charter schools for their direct facilities costs (rent, capital improvements, major maintenance). This request is based on charter schools projected costs over the biennium.	A			\$ 7,556,758			\$ 7,868,889
DN600/J	ND	3	3	Commission Operating Budget	Funds to pay for the operating costs of the Public Charter Schools Commission	A	15.00		\$ 1,235,114	15.00		\$ 1,235,114
DN600/J	AR	4	4	Charter Schools Audit Costs	Hawaii Revised Statute requires that every charter school undergo an annual independent financial audit. This is a cost that regular public schools do not experience. Because the purpose of the audits is to provide assurance to outside users of the financial reports (Legislature, Commission, etc.) charter schools contend that these costs should not come from within their operating funds.	A			\$ 629,000			\$ 629,000

Department of Education - Charter Schools
Proposed FY14 and FY15 Additions

Table 6

<u>Prog ID</u>	<u>Request Category</u>	<u>Prog ID Priority</u>	<u>Dept-Wide Priority</u>	<u>Description of Addition</u>	<u>Explanation</u>	<u>MOF</u>	<u>FY14</u>			<u>FY15</u>		
							<u>Pos (P)</u>	<u>Pos (T)</u>	<u>\$\$\$</u>	<u>Pos (P)</u>	<u>Pos (T)</u>	<u>\$\$\$</u>
DN600/J	HS	5	5	Workers' Comp DHRD Amin Fee	Hawaii statute requires that charter schools reimburse DHRD for their costs of administering workers' comp claims for their employees. The amount of reimbursement is set at .07% of the amount appropriated for charter schools. Regular public schools are not subject to this cost because all of the costs of the employee benefits programs are paid centrally. This cost is not part of the charter school funding formula.	A			\$ 48,376			\$ 51,723

Department of Education - Charter Schools
 Current Year (FY13) Restrictions

Table 7

<u>Prog ID</u>	<u>MOF</u>	<u>Restriction \$\$\$</u>	<u>Percent of Act 106/12 Appropriation</u>	<u>Impact</u>
None				

Department of Education - Charter Schools
 Emergency Appropriation Requests

Table 8

<u>Prog ID</u>	<u>Description of Request</u>	<u>Explanation of Request</u>	<u>MOF</u>	<u>Pos (P)</u> <u>FY13</u>	<u>Pos (T)</u> <u>FY13</u>	<u>\$\$\$ FY13</u>
None						

Department of Education - Charter Schools
Expenditures Exceeding Appropriation Ceilings

Table 9

<u>Prog ID</u>	<u>MOF</u>	<u>Date</u>	<u>Appropriation Ceiling</u>	<u>Amount Exceeding Appropriation</u>	<u>Increase Percent</u>	<u>Reason for Exceeding Ceiling</u>	<u>Recurring (Y/N)</u>	<u>GF Impact (Y/N)</u>
None								

Department of Education - Charter Schools
 Intradepartmental Transfer of Funds

Table 10

<u>Anticipated or Actual Date of Transfer</u>	<u>MOF</u>	<u>Amount of Transfer</u>	<u>From Prog ID</u>	<u>Percent of Imparting Program ID Appropriation</u>	<u>To Prog ID</u>	<u>Percent of Receiving Program ID Appropriation</u>	<u>Reason for Transfer</u>	<u>Recurring (Y/N)</u>
11/1/2012	A	\$ 2,976,120	EDN600	4.8%	EDN100	Unknown	Reconciliation of per pupil funding between DOE and Charter Schools pursuant to Act 130.	Process is recurring, amount is determined each year

Department of Education - Charter Schools
Active Federal Awards

Table 11

<u>State Expending Agency</u>	<u>Program ID</u>	<u>Award Number</u>	<u>CFDA Number</u>	<u>Award Description</u>	<u>Awarding Federal Agency</u>	<u>Award Amount</u>	<u>Award Amount Allocated to the Pgm ID in Column B</u>	<u>State Appropriation Symbol</u>	<u>At Risk for Federal Sequestration (Y/N)</u>	<u>Contact Name</u>	<u>Contact Phone</u>	<u>Contact Email</u>	
E			10.582	Fresh Fruit and Vegetable Program	Dept. Of Agriculture	\$15,150			N	Kaleihoku Kalai-Aguiar	(808) 982-4260	kalei3@hawaii.edu	Nawahi
E			10.555	National School Lunch Program	Dept. Of Agriculture	\$80,000 (est)			N	Kaleihoku Kalai-Aguiar	(808) 982-4260	kalei3@hawaii.edu	Nawahi
E			10.553	Special Breakfast Program	Dept. Of Agriculture	\$20,000 (est)			N	Kaleihoku Kalai-Aguiar	(808) 982-4260	kalei3@hawaii.edu	Nawahi
E			10.555	After School Snack Program	Dept. Of Agriculture	\$4,000 (est)			N	Kaleihoku Kalai-Aguiar	(808) 982-4260	kalei3@hawaii.edu	Nawahi
E	17929		84.027	For Web based notebook computers for inclusion classes		9878				Sandy Kelley	(808) 935-6015	cpcs@hawaii.rr.com	Connections
E			10.553 & 10.555	Breakfast & Lunch Reimbursement	Dept of Education	\$100,000	\$100,000		N	Mary Breckenridge	587-3600	mary_breckenridge@notes.k12.hi.us	Waialae
E		U282C110014	84.282C	Improving achievement	USDOE	\$102,181			N	Allyson Tamura	808-887-8144	allyson@kalo.org	Kanu
E			10.555	National School Lunch Program	US Department of Agriculture	\$60,831				Matt Horne	808-887-6090	matt_horne@notes.k12.hi.us	Waimea
E			10.553	School Breakfast Program	US Department of Agriculture	\$12,306				Matt Horne	808-887-6090	matt_horne@notes.k12.hi.us	Waimea

Department of Education - Charter Schools
Active Federal Awards

Table 11

<u>State Expending Agency</u>	<u>Program ID</u>	<u>Award Number</u>	<u>CFDA Number</u>	<u>Award Description</u>	<u>Awarding Federal Agency</u>	<u>Award Amount</u>	<u>Award Amount Allocated to the Pgm ID in Column B</u>	<u>State Appropriation Symbol</u>	<u>At Risk for Federal Sequestration (Y/N)</u>	<u>Contact Name</u>	<u>Contact Phone</u>	<u>Contact Email</u>	
E			10.555	National School Lunch Program	US Department of Agriculture	\$360,000				Emma Weiss	808-697-7110	eweiss@kamaile.org	Kamaile
E			10.553	School Breakfast Program	US Department of Agriculture	\$100,000				Emma Weiss	808-697-7110	eweiss@kamaile.org	Kamaile
E			10.582	Fresh Fruit & Vegetable	US Department of Agriculture	\$70,000				Emma Weiss	808-697-7110	eweiss@kamaile.org	Kamaile
E			CFDA10.555 & CFDA10.553	National School Lunch & breakfast Program	A	\$114,712			y	Lihau Wengler-loane	808-961-0470 ext 222		Ka Umeke
E			CFDA10.582	Fresh Fruit and Vegetable Program	A	\$11,851			y	Lihau Wengler-loane	808-961-0470 ext 222		Ka Umeke
E			CFDA	After Scool Snack Program	A	\$6,193			y	Lihau Wengler-loane	808-961-0470 ext 222		Ka Umeke

Department of Education - Charter Schools
Active Federal Awards

Table 11

<u>State Expending Agency</u>	<u>Program ID</u>	<u>Award Number</u>	<u>CFDA Number</u>	<u>Award Description</u>	<u>Awarding Federal Agency</u>	<u>Award Amount</u>	<u>Award Amount Allocated to the Pgm ID in Column B</u>	<u>State Appropriation Symbol</u>	<u>At Risk for Federal Sequestration (Y/N)</u>	<u>Contact Name</u>	<u>Contact Phone</u>	<u>Contact Email</u>	
N/A	??	S362A011005 3	84.362A	Native Hawaiian Education Act Program - Na Pualei (3-year grant): Goal is to improve school-readiness and success for native Hawaiian children entering kindergarten by providing free, high quality Hawaiian language immersion Junior-Kindergarten program. Grant awarded directly to supporting non-profit. Award amount represents total allotted to school for FY2013	Dept. of Education	\$145,800	??	??	??	Ivy Kelling	808-235-9175	meahilahila@kamakau.com	Kamakau
E	EDN600	17790	84.011	NCLB Migrant Education	Dept. of Education	\$22,712	\$22,712		Y	Ted Pirsig	586-3775	ted@hcsao.org	pass through to CSAO from DOE
E	EDN600	18010	84.41	Education Jobs Act	Dept. of Education	\$29,159	\$29,159		Y	Ted Pirsig	586-3775	ted@hcsao.org	pass through to CSAO from DOE
E	EDN600	18055	84.010	NCLB Assessment	Dept. of Education	\$2,634	\$2,634		Y	Ted Pirsig	586-3775	ted@hcsao.org	pass through to CSAO from DOE
E	EDN600	18084	84.010	NCLB Administration	Dept. of Education	\$2,660	\$2,660		Y	Ted Pirsig	586-3775	ted@hcsao.org	pass through to CSAO from DOE
E	EDN600	18902	84.010	Title I Grants to Schools	Dept. of Education	\$3,395	\$3,395		Y	Ted Pirsig	586-3775	ted@hcsao.org	pass through to CSAO from DOE

Department of Education - Charter Schools
Active Federal Awards

Table 11

<u>State Expending Agency</u>	<u>Program ID</u>	<u>Award Number</u>	<u>CFDA Number</u>	<u>Award Description</u>	<u>Awarding Federal Agency</u>	<u>Award Amount</u>	<u>Award Amount Allocated to the Pgm ID in Column B</u>	<u>State Appropriation Symbol</u>	<u>At Risk for Federal Sequestration (Y/N)</u>	<u>Contact Name</u>	<u>Contact Phone</u>	<u>Contact Email</u>	
E	EDN600	18927	84.010	NCLB Title I School Improvement	Dept. of Education	\$11,375	\$11,375		Y	Ted Pirsig	586-3775	ted@hcsao.org	pass through to CSAO from DOE
E	EDN600	18935	84.010	NCLB Title I Parent Involvement	Dept. of Education	\$132	\$132		Y	Ted Pirsig	586-3775	ted@hcsao.org	pass through to CSAO from DOE
E	EDN600	19998/19026	84.041	Federal Impact Aid	Dept. of Education	\$2,762,510	\$2,762,510		Y	Ted Pirsig	586-3775	ted@hcsao.org	pass through to CSAO from DOE
E	EDN600	206xx	84.367	Federal Title Iia	Dept. of Education	\$114,336	\$114,336		Y	Ted Pirsig	586-3775	ted@hcsao.org	pass through to CSAO from DOE
E	EDN600	38616	84.010	ARRA Title I SIG Grants	Dept. of Education	\$700,000	\$700,000		Y	Ted Pirsig	586-3775	ted@hcsao.org	pass through to CSAO from DOE
E	EDN600	25497	84.196	Ed for Homeless Children & Youth	Dept. of Education	\$18,875	\$18,875			Ted Pirsig	586-3776	ted@hcsao.org	pass through to CSAO from DOE
E	EDN600	52003	84.010	Title I Professional Development	Dept. of Education	\$13,192	\$13,192		Y	Ted Pirsig	586-3775	ted@hcsao.org	pass through to CSAO from DOE

COLUMN	DATA ELEMENT	DEFINITION
A	State Expending Agency	State entity authorized to expend the funds as authorized by the appropriation or as delegated by the Governor. Select from drop-down menu. See legend below.
B	Program I.D.	The unique identifier for the specific program responsible for carrying out the program consisting of the abbreviation for the State entity followed by the organization number for the program. Format: XXX###
C	Award Number	The identifying number assigned by the awarding Federal Agency, such as the federal grant number, federal contract number or the federal loan number that appears in the federal award document.
D	CFDA No.	The number associated with the published description of Federal assistance program in the Catalog of Federal Domestic Assistance. Only applies to grants and loans. A list of CFDA codes can be searched at: https://www.cfda.gov/index?s=program&tab=list&mode=list Format: ##.###.
E	Award Description	Award title and description with purpose of funding action.
F	Awarding Federal Agency	Name of the federal agency that awarded and administers the award on behalf of the funding agency. Select from drop-down menu. See agency list below.
G	Award Amount	For Grants: The total amount of the award. For Loans: The total amount of the loan obligated by the Federal Agency; the face value of the loan. For Contracts: The total amount obligated by the Federal Agency.
H	Award Amount Allocated to the Program ID in Column B	Enter the portion of the total award amount allocated to this Program ID. For example, if a federal award in the amount of \$500 is allocated to only AGR100, the "Award Amount" and the "Award Amount Allocated to the Pgm ID in Column B" would both be \$500. However, if the \$500 will be allocated to AGR100, AGR200 and AGR300, in the amounts of \$100, \$250 and \$150, respectively, the "Award Amount" would be the \$500 for all three program IDs but the "Award Amount Allocated to the Pgm ID in Column B" would be \$100 for AGR100, \$250 for AGR200 and \$150 for AGR300.
I	State Appropriation Symbol	The account number established in FAMIS. The appropriation account is a combination of 4 fields: Fund Type, Fiscal Year, Appropriation Account Number, and Dept. Code. If an award has appropriation symbols for multiple fiscal years, enter the symbol for the first fiscal year. Format: X-YY-###-X
J	Contact Name	Name of the individual at the program level responsible for performance of the award.
K	Contact Phone No.	Phone no. of the individual at the program level responsible for performance of the award.
L	Contact Email	Email of the individual at the program level responsible for performance of the award.
	LEGEND:	
	State Expending Agency	
A (AGR)	Department of Agriculture	
B (BED)	Department of Business, Economic Dev & Tourism	
C (LNR)	Department of Land and Natural Resources	
D (TRN)	Department of Transportation	
E (EDN)	Department of Education	
F (UOH)	University of Hawaii	
G (DEF)	Department of Defense	
H (HTH)	Department of Health	
I (HHL)	Department of Hawaiian Home Lands	
J (JUD)	Judiciary	
K (HMS)	Department of Human Services	
L (LBR)	Department of Labor and Industrial Relations	
M (AGS)	Department of Accounting and General Services	
N (ATG)	Department of Attorney General	
O (BUF)	Department of Budget and Finance	
P (HRD)	Department of Human Resources Development	
Q (GOV)	Office of the Governor	
R (CCA)	Department of Commerce and Consumer Affairs	
S (LTG)	Office of the Lieutenant Governor	
T (TAX)	Department of Taxation	
V1 (PSD)	Department of Public Safety	
Z1 (OHA)	Office of Hawaiian Affairs	
	Federal Agency	
	Dept. of Agriculture	
	Dept. of Commerce	
	Dept. of Defense	
	Dept. of Education	
	Dept. of Energy	
	Dept. of Health and Human Services	
	Dept. of Homeland Security	
	Dept. of Housing and Urban Development	
	Dept. of Justice	
	Dept. of Labor	
	Dept. of State	
	Dept. of the Interior	
	Dept. of the Treasury	
	Dept. of Transportation	
	Dept. of Veterans Affairs	
	Corporation for National & Community Svc	
	Environmental Protection Agency	
	General Services Administration	
	NASA	
	National Science Foundation	
	Nuclear Regulatory Commission	
	Office of Personnel Management	
	Small Business Administration	
	Social Security Administration	
	U.S. Agency for International Development	

Department of Education - Charter Schools
Non-General Fund Balances

Table 12

<u>Name of Fund</u>	<u>Purpose</u>	<u>Statutory Reference</u>	<u>MOF</u>	<u>Beginning FY13 Unencumbered Cash Balance</u>	<u>Estimated FY13 Revenues</u>	<u>Estimated FY13 Expenditures and Encumbrances</u>	<u>Estimated FY13 Net Transfers</u>	<u>Estimated FY13 Ending Unencumbered Cash Balance</u>	<u>Balance in Excess of Program Needs</u>	
Kamehameha Schools Ho'olako Like Department	To develop, enhance and maintain the Hawaiian language through education in the home and school.		DON	\$ -	\$ 457,500.00	\$ 457,500.00	\$ -	\$ -	\$ -	Nawahi
Student/Staff Lunch Collections	Student/ Teacher Meals fees		W	\$ -	\$ 23,000.00	\$ 23,000.00	\$ -	\$ -	\$ -	HAAS
Van Shuttle Collections	Student Transportation		W	\$ -	\$ 22,400.00	\$ 20,000.00	\$ -	\$ -	\$ -	HAAS
Other Misc Income	Materials, Fees, Interest, Rebate...		W	\$ -	\$ 30,000.00	\$ 30,000.00	\$ -	\$ -	\$ -	HAAS
Individual Donations	Supports aloha/public relations		DON	\$ -						HLC
Student Lunch Fees	Purchase of school breakfast/lunch		W	\$ -	\$ 7,733.00	\$ 7,733.00		\$ -	\$ -	HLC
Student General Fees	Supports student activities, student supplies		W	\$ -	\$ 11,320.00	\$ 11,320.00		\$ -	\$ -	HLC
Special Events	Supports student activities - camp		B	\$ -	\$ 2,400.00	\$ 2,400.00		\$ -	\$ -	HLC
Interest	Supports service fees and aloha/public relations		B	\$ -	\$ 420.00	\$ 420.00		\$ -	\$ -	HLC
Ka Huli O Halao - Kamehameha School Ho'olako Like Grant	Partial funding for program and management staff, some supplies, partial funding of e2020		DON	\$ -	\$ 149,500.00	\$ 149,500.00		\$ -	\$ -	HLC
Ka Huli O Halao - Kamehameha School Accreditation Grant	Partial funding for expenses attriuted to school accreditation - professional development training, staff stipends, partial funding for accreditaion manger and admin support staff		DON	\$ -	\$ 93,250.00	\$ 93,250.00		\$ -	\$ -	HLC
Ka Huli O Halao - Kamehameha School Aina Ulu Grant	Partial funding of Mo`omona Mauka and Makai lab community resource specialists, supplies		DON	\$ -	\$ 60,000.00	\$ 60,000.00		\$ -	\$ -	HLC
Extended Day Fees	A+ Fees		W		\$ 2,000.00	\$ 2,000.00		\$ -	\$ -	Kona Pacific
Fundraising	Various Events		DON		\$ 8,609.00	\$ 8,609.00			\$ -	Kona Pacific
Grants	Food service, extended day, gardening program		DON		\$ 20,000.00	\$ 20,000.00			\$ -	Kona Pacific
Logo Items	Backpacks/lunchbags etc.		W		\$ 1,530.00	\$ 1,530.00			\$ -	Kona Pacific
Lunch	Lunch payments		W		\$ 6,374.00	\$ 6,374.00			\$ -	Kona Pacific
Supply Fee	Per pupil annual supply fee		W		\$ 10,440.00	\$ 10,440.00			\$ -	Kona Pacific
Uniforms	Pupil uniform T-shirts		W		\$ 11,473.00	\$ 11,473.00			\$ -	Kona Pacific
CPCS A+ Funds	For After School Program		W	\$ -	\$ 5,600.00	\$ 5,600.00		\$ -		Connections
Transportation Fees	For Bus Maintenance		W	\$ -	\$ 4,800.00	\$ 4,800.00		\$ -		Connections

Department of Education - Charter Schools
Non-General Fund Balances

Table 12

Name of Fund	Purpose	Statutory Reference	MOF	Beginning FY13 Unencumbered Cash Balance	Estimated FY13 Revenues	Estimated FY13 Expenditures and Encumbrances	Estimated FY13 Net Transfers	Estimated FY13 Ending Unencumbered Cash Balance	Balance in Excess of Program Needs	
donations	Class excursions		DON	\$ -	\$ 200.00	\$ 200.00		\$ -		Connections
Nutrition funding Fees	Vending services		W	\$ -	\$ 20,200.00	\$ 20,200.00		\$ -		Connections
Interest/Investment Income	Help pay for lease space		B	\$ -	\$ 2,472.00	\$ 2,472.00		\$ -		Connections
Sublease	Help pay for lease space		B	\$ -	\$ 3,000.00	\$ 3,000.00		\$ -		Connections
Fundraising	Class excursions		W	\$ -	\$ 15,532.00	\$ 15,532.00		\$ -		Connections
Pizza Hut Grant	Authors for Reading Nights		B	\$ -	\$ -	\$ -		\$ -		Connections
CRDG Design Grant	Google Docs Implementation Training		B	\$ -	\$ -	\$ -		\$ -		Connections
Student Supply Fees	Classroom supplies and materials		W	\$ -	\$ 27,000.00	\$ 27,000.00	\$ -	\$ -	\$ -	Voyager
Uniform Sales	School uniform		W	\$ -	\$ 8,000.00	\$ 8,000.00	\$ -	\$ -	\$ -	Voyager
Lunch/Breadfast Fees	School meals		W	\$ -	\$ 40,000.00	\$ 40,000.00	\$ -	\$ -	\$ -	Voyager
Snack sales	Classroom supplies and fieldtrip costs		W	\$ -	\$ 2,000.00	\$ 2,000.00	\$ -	\$ -	\$ -	Voyager
Fieldtrips	Fieldtrip costs		W	\$ -	\$ 15,000.00	\$ 15,000.00	\$ -	\$ -	\$ -	Voyager
NSF/Late pickup Fees	Bank service fee		W	\$ -	\$ 250.00	\$ 250.00	\$ -	\$ -	\$ -	Voyager
interest	Bank service fee			\$ -	\$ 300.00	\$ 300.00	\$ -	\$ -	\$ -	Voyager
Miscellaneous Donation	Facilities costs		DON	\$ -	\$ 1,000.00	\$ 1,000.00	\$ -	\$ -	\$ -	Voyager
School Fundraising	Facilities costs		W	\$ -	\$ 15,000.00	\$ 15,000.00	\$ -	\$ -	\$ -	Voyager
Parents donation	Facilities costs		w	\$ -	\$ 25,000.00	\$ 25,000.00	\$ -	\$ -	\$ -	Voyager
Friends of Waialae School	Teacher/Admin Support		DON	\$ 1,236.68	\$ 18,500.00	\$ 19,736.68	\$ -	\$ -	\$ -	Waialae
Donations	School Support		DON	\$ 2,630.05	\$ 50,000.00	\$ 52,630.05	\$ -	\$ -	\$ -	Waialae
Students/Parents	Field Trip, Meal Service, Shirts, Books, W+, Grade Level Fundraising, Yearbook		W	\$ 9,890.00	\$ 350,000.00	\$ 349,890.00	\$ -	\$ 10,000.00	\$ -	Waialae
Fundraising			W	\$ 1,454.00	\$ 1,454.00					WOL
National school lunch program			W	\$ 1,432.00	\$ 1,432.00					WOL
School Fees and uniforms			W	\$ 1,207.00	\$ 1,207.00					WOL
Kamehameha Schools	Operating		Don	\$ -	\$ 375,000.00	\$ 375,000.00		\$ -		Kanu
OHA	Operating		Don	\$ 76,220.00	\$ 72,230.00	\$ 148,450.00		\$ -		Kanu
School Store	Student Activities and supplies		W	\$ 175,637.25	\$ 15,000.00	\$ 25,000.00		\$ 165,637.25		Kanu
Lunch Collection	Lunch costs		W	\$ -	\$ 36,000.00	\$ 36,000.00		\$ -		Kanu
Fundraisers	To supplement operational funds		DON	\$ 32,525.00		\$ 8,025.00		\$ 24,500.00		Volcano
Building Fund	Set aside for Capital Improvement		DON	\$ 8,952.59		\$ -		\$ 8,953.00		Volcano
Health Collaborative	For Health & First Aid supplies		DON	\$ 487.54		\$ 488.00		\$ 200.00		Volcano
Bus	Collected from parents for bus fare		W	\$ -	\$ 33,000.00	\$ 57,056.89		\$ -		Volcano
Lunch	Collected from parents for lunch fees		W	\$ 650.35	\$ 13,936.00	\$ 118,220.00		\$ -		Volcano

Department of Education - Charter Schools
Non-General Fund Balances

Table 12

Name of Fund	Purpose	Statutory Reference	MOF	Beginning FY13 Unencumbered Cash Balance	Estimated FY13 Revenues	Estimated FY13 Expenditures and Encumbrances	Estimated FY13 Net Transfers	Estimated FY13 Ending Unencumbered Cash Balance	Balance in Excess of Program Needs	
Supply Fees	Collected from parents to supplement classroom supply budget		W	\$ -	\$ 533.00	\$ 533.00		\$ -		Volcano
Summer School	Summer School Payroll		W	\$ 5.00	\$ 31,270.00	\$ 31,270.00		\$ 5.00		MBTA
General: Driver's Ed, Computer Fee			W	\$ -	\$ 5,215.00	\$ 5,215.00		\$ -		MBTA
Book Sale			W	\$ -	\$ 450.00	\$ 450.00		\$ -		MBTA
After School Programs	Art and Language		W	\$ 223.00		\$ 223.00		\$ -	\$ -	WHEA
Community Fair	Student Projects		DON	\$ 1,514.00		\$ 1,514.00		\$ -	\$ -	WHEA
HI Preparatory Academy	Aloha Kai/Fish Food		DON	\$ 32.00		\$ 32.00		\$ -	\$ -	WHEA
Holualoa Elementary School	Aloha Kai/Fish Food		DON	\$ 198.00		\$ 198.00		\$ -	\$ -	WHEA
Jack Tours	Aloha Kai/Fish Food		DON	\$ 172.00		\$ 172.00		\$ -	\$ -	WHEA
Kahakai Elementary School	Aloha Kai/Fish Food		DON	\$ 129.00		\$ 129.00		\$ -	\$ -	WHEA
Kamehameha School	Aloha Kai/Fish Food		DON	\$ 80.00		\$ 80.00		\$ -	\$ -	WHEA
Kipapa Elementary School	Aloha Kai/Fish Food		DON	\$ 204.00		\$ 204.00		\$ -	\$ -	WHEA
Kona Elks Club	Student Projects		DON	\$ 2,119.00		\$ 2,119.00		\$ -	\$ -	WHEA
KTA Superstores	Student Projects		DON	\$ 377.00		\$ 377.00		\$ -	\$ -	WHEA
Laie Elementary School	Aloha Kai/Fish Food		DON	\$ 206.00		\$ 206.00		\$ -	\$ -	WHEA
Nautilus Project	Student Projects		DON	\$ 4,000.00		\$ 4,000.00		\$ -	\$ -	WHEA
Small World School	Aloha Kai/Fish Food		DON	\$ 150.00		\$ 150.00		\$ -	\$ -	WHEA
Student Lab Fees	Student Supplies		W	\$ 6,006.00		\$ 6,006.00		\$ -	\$ -	WHEA
Waikoloa Elementary School	Aloha Kai/Fish Food		DON	\$ 166.00		\$ 166.00		\$ -	\$ -	WHEA
Ho'okāko'o/Ho'olako Like	Provide support for charter school innovations		DON	\$ 495,612	\$ 433,500	\$ 460,652		\$ 468,460	\$ -	Waimea
Local School Fundraising/ Private Donations	Support school activities (i.e. Student Government, Eola Program,etc.)		DON	\$ -	\$ 30,000	\$ 30,000		\$ -	\$ -	Waimea
Student ID's	Fees collected for the replacement of Student ID's		W	\$ -	\$ 455	\$ 455		\$ -	\$ -	Waimea
Student Meal Collections	Fees for student meals		W	\$ -	\$ 14,500	\$ 14,500		\$ -	\$ -	Waimea
Ho'okāko'o/Ho'olako Like	Provide support for charter school innovations		DON	\$ 901,637	\$ 1,300,000	\$ 1,700,000		\$ 501,637	\$ -	Kamaile
Local School Fundraising/ Private Donations	Support school activities (i.e. Student Government, Eola Program,etc.)		DON		\$ 50,000	\$ 50,000		\$ -	\$ -	Kamaile
Student ID's	Fees collected for the replacement of Student ID's		W	\$ -	\$ 1,500	\$ 1,500		\$ -	\$ -	Kamaile
Year Book Collections	Fees collected for yearbook		W	\$ -	\$ 6,000	\$ 6,000		\$ -	\$ -	Kamaile

Department of Education - Charter Schools
Non-General Fund Balances

Table 12

<u>Name of Fund</u>	<u>Purpose</u>	<u>Statutory Reference</u>	<u>MOF</u>	<u>Beginning FY13 Unencumbered Cash Balance</u>	<u>Estimated FY13 Revenues</u>	<u>Estimated FY13 Expenditures and Encumbrances</u>	<u>Estimated FY13 Net Transfers</u>	<u>Estimated FY13 Ending Unencumbered Cash Balance</u>	<u>Balance in Excess of Program Needs</u>	
Ho'olako Like - KS	Academic Achievement, cultural knowledge & practice, 'ohana, community give-back, PD		DON	\$ -	\$ 150,000	\$ 150,000				Ke Ana La`ahana
OHA - Na Lei Na'auao	Math improvement, HSA, cultural teachings & practices, Na Papa Naue Loa, PD		DON	\$ -	\$ 65,000	\$ 65,000				Ke Ana La`ahana
Fundraising	General		W	\$ -	\$ 1,000	\$ 1,000				Ke Ana La`ahana
Payroll			\$481	\$ 480,000	\$ 480,000			\$ -		Ka Umeke
Kamehameha Schools Ho'olako Like funds	To support educational strategic plan		Don	\$ -	\$ 202,500	\$ 202,500	\$ -	\$ -	\$ -	Kamakau
Kamehameha Schools Accreditation funds	To support accreditation activities		Don	\$ -	\$ 70,000	\$ 70,000	\$ -	\$ -	\$ -	Kamakau
Misc. revenue (e.g. Student fees, special events, uniforms, meals, bank interest)	Misc. service fees charged by the school		W	\$ -	\$ 39,735	\$ 39,735	\$ -	\$ -	\$ -	Kamakau
Kamehameha Schools Ho'olako Like funds	To support educational strategic plan		Don	\$ -	\$ 355,500	\$ 355,500	\$ -	\$ -	\$ -	Halau Lokahi
OHA funds	To support educational strategic plan		Don	\$ -	\$ 94,800	\$ 94,800	\$ -	\$ -	\$ -	Halau Lokahi
Misc. revenue (e.g. Student fees, special events, uniforms, meals, bank interest)	Misc. service fees charged by the school		W	\$ -	\$ 39,520	\$ 39,520	\$ -	\$ -	\$ -	Halau Lokahi
Office of Hawaiian Affairs	student bus service to and from school			\$ -	\$ 113,700	\$ 181,495	\$ 113,700			Kawaihona
KSBE	to provide add'l Resource and Support Personnel in the classroom			\$ -	\$ 855,000	\$ 1,044,618	\$ 855,000			Kawaihona
Field Trips	Bus transportation		W	\$ -	\$ 5,000	\$ 9,500	\$ 5,000			Kawaihona
Fundraising	Events & Activities		W	\$ -	\$ 5,000	\$ 52,000	\$ 5,000			Kawaihona
Uniforms	Uniforms		W	\$ -	\$ 17,500	\$ 30,000	\$ 17,500			Kawaihona
Other Merchandise	Recorders, ID's,		W	\$ -	\$ 5,000	\$ 5,000	\$ 5,000			Kawaihona
					\$ 1,000	\$ 1,000				Kawaihona

Department of Education - Charter Schools
Positions Vacant as of November 30

Table 13

<u>Prog ID</u>	<u>Date of Vacancy</u>	<u>Position Number</u>	<u>Position Title</u>	<u>SR Level</u>	<u>BU Code</u>	<u>Perm Temp (P/T)</u>	<u>FTE</u>	<u>MOF</u>	<u>Budgeted Amount</u>	<u>Actual Salary Last Paid</u>	<u>Exempt (Y/N)</u>	<u>Authority to Hire (Y/N)</u>	<u>Occupied by 89 Day Hire (Y/N)</u>	<u># of 89 Hire Appointments</u>	
EDN600/551	10/31/2012	N/A	Counselor - High School	T03-05	5	P	1.00	A	\$ 46,609	\$ 46,609	N	Y	N		HTA
15137/546	7/27/2012	N/A	Secondary Teacher/Advisor	T0306	5	P	1.00	A	\$ 45,608	\$ -		Y	N		HLC
15137/149	7/25/2011	C1037	Technology Facilitator	W0403	5	P	1.00	G	\$ 54,305	\$ 54,305	N	Y	N	0	Waialae
15137/149	10/1/2011	59926	Account Clerk II	SR08/A	3	P	1.00	G	\$ 27,828	\$ 27,828	N	Y	N	0	Waialae
EDN600/548	6/30/2012	801389	PCS Educ Asst III	SR10/A	3	T	0.50	G	\$ 11,565	\$ 11,565	Y	N/A	N		Innovations
EDN600/548	6/30/2012	802790	SPED EA	SR10/A	3	T	1.00	G	\$ 24,148	\$ 24,148	Y		N		Innovations
EDN600/548	6/30/2012	802300	PCS Office Services Coordinator	SRNA	13	T	1.00	G	\$ 39,996	\$ 39,996	Y		N		Innovations
EDN600/548	8/8/2011	116649	SASA III	SR16	3	T	1.00	G	\$ 35,064	\$ 35,064	Y		N		Innovations
EDN600/548	7/23/2009	C5256	Elem-Sec. Teacher	T03-01	5	T	0.50	G	\$ 17,665	\$ 17,665	Y		N		Innovations
EDN600/548	8/7/2012	C5066	Elem-Sec. Teacher	T03-06	5	T	1.00	G	\$ 32,222	\$ 32,222	Y		N		Innovations
EDN600/548	7/25/2008	C5255	Elem-Sec. Teacher (meg)	T02-01	5	T	0.50	G	\$ 15,728	\$ 15,728	Y		N		Innovations
EDN600/548	6/30/2012	C5259	Counselor	T02-01	5	T	1.00	G	\$ 48,008	\$ 48,008	Y		N		Innovations
15137/399	7/23/2012	c5275	Secondary Teacher	P02-01	5	P	1.00	A	\$ 32,713	\$ -	Y	Y	N	N/A	WHEA
EDN600/394	N/A	TBD	Vice Principal 2	EO4	6	T	1.00		\$ 80,000	n/a	Y	Y	N		Waimea
EDN600/275	N/A	TBD	Secondary Teacher (Math)		5	P	1.00		\$ -	n/a	Y	Y	N		Kamaile
17131/562		58918	EA-1							\$ 987			y	1	Ka Umeke
EDN600/547	10/2/2012	547901	PCS Custodian I	BC02	1	P	0.85	A	\$ 28,244	\$ 9,670	N	Y	Y	1	Kamakau
EDN600	8/15/2012	116963	PCS Clerk Typist		3	T	1.00	A	\$ 21,096	\$ 2,637	N	N	N		Kawaihona

Department of Education - Charter Schools
Overtime Expenditures

Table 14

Prog ID	Program Title	MOF	FY12 (actual)			FY13 (estimated)			FY14 (budgeted)				
			<u>Base Salary</u> \$\$\$\$	<u>Overtime</u> \$\$\$\$	<u>Overtime</u> Percent	<u>Base Salary</u> \$\$\$\$	<u>Overtime</u> \$\$\$\$	<u>Overtime</u> Percent	<u>Base Salary</u> \$\$\$\$	<u>Overtime</u> \$\$\$\$	<u>Overtime</u> Percent		
EDN600			\$ 1,841,698	\$ -	0.0%	\$ 1,748,347	\$ -	0.0%	\$ 1,748,347	\$ -	0.0%	Waimea	
EDN600	Charter Schools State Per Pupil		\$ 5,370,081	\$ 94,084	1.8%	\$ 6,057,669	\$ 30,000	0.5%	\$ 6,057,669	\$ -	0.0%	Kamaile	
EDN600	Charter Schools State Per	A	\$ 333,065	\$ 24,833	7.5%	\$ 685,569	\$ 51,418	7.5%	\$ 661,994	\$ 25,000	3.8%	Kamakau	
n/a	Donations	DON	\$ 502,833	\$ -	0.0%	\$ 251,640	\$ -	0.0%	\$ 250,215	\$ -	0.0%	Kamakau	
n/a	Federal Native Hawaiian E	N	\$ 142,439	\$ 26,960	18.9%	\$ 116,070	\$ 5,804	5.0%	\$ 116,070	\$ 5,804	5.0%	Kamakau	
EDN600	Charter Schools State Per	A	\$ 355,309	\$ 32,696	9.2%	\$ 599,414	\$ 55,159	9.2%	\$ 949,214	\$ 87,348	9.2%	Halau Lokahi	
n/a	Donations	DON	\$ 395,035	\$ 477	0.1%	\$ 450,300	\$ -	0.0%	\$ 400,500	\$ -	0.0%	Halau Lokahi	

Department of Education - Charter Schools
Overpayments as of November 30

Table 15

<u>Name</u>	<u>Date of Over-payment</u>	<u>Gross Amount Overpaid</u>	<u>Amount Recovered</u>	<u>Balance</u>	<u>Category</u>				<u>Reason for Overpayment</u>	<u>Referred to Attorney General</u>		
					<u>Employed Occurred > 2 Years</u>	<u>Employed Occurred < 2 Years</u>	<u>Not Employed Occurred > 2 Years</u>	<u>Not Employed Occurred < 2 Years</u>				
	09/20/12	\$ 1,721.50	\$ 320.00	\$ 1,401.50		X			Paid at wrong rate		Kona Pacific	

Department of Education - Charter Schools
Active Contracts

Prog ID	MOF	Frequency		Max Value	Outstanding Balance	Term of Contract			Organization	Category E/L/P/C/ G/S	Description	Explanation of How Contract is Monitored	POS Y/N			
		Amount	(M/A/O)			Date Executed	From	To								
EDN600/551	A	\$ 18,999	M	\$ 683,964.00	\$ 180,981.00	07/01/11	08/01/11	07/31/14	GO Financial Corporation	L	Oahu Learning Center lease	Bus. Mgr./Prop. Mgr./ LSB Audit & Finance Committee	Y	HTA		
EDN600/551	A	\$ 524	M	\$ 12,565.44	\$ 9,424.08	07/01/12	07/01/12	06/30/14	G.Takayesu & Son Ltd.	L	Oahu Admin. Office lease	Bus. Mgr./Prop. Mgr./ LSB Audit & Finance Committee	Y	HTA		
EDN600/551	A	\$ 2,700	M	\$ 64,800.00	\$ 16,200.00	08/01/11	07/01/11	06/30/13	Princeville SC LLC	L	Kauai Learning Center lease	Bus. Mgr./Prop. Mgr./ LSB Audit & Finance Committee	Y	HTA		
EDN600/551	A	\$ 23,504	M	\$ 846,144.00	\$ 117,520.00	07/01/10	07/01/10	06/30/13	TEQlease	E	Apple Computer lease #1; 850 computers	Bus. Mgr./Leasing Mgr./ Computer Tech./ LSB Audit & Finance Committee	Y	HTA		
EDN600/551	A	\$ 4,498	M	\$ 161,928.00	\$ 76,466.00	07/01/11	07/01/11	06/30/14	Somerset Leasing Corp.	E	Apple Computer lease #2; 150 computers	Bus. Mgr./Leasing Mgr./ Computer Tech./ LSB Audit & Finance Committee	Y	HTA		
EDN600/551	A	\$ 336,000	M	\$ 4,032,000.00	\$ 2,016,000.00	07/01/08	07/01/08	06/30/14	K12, Inc.	S	Curriculum OLS, Teaching Materials, Mgmt. and Tech.	Bus. Mgr./K12 Inc. corporate/LSB Audit & Finance Committee	Y	HTA		
EDN600/551	A	\$ 214	M	\$ 7,686.72	\$ 6,405.60	07/01/12	07/01/12	06/30/15	GE Capital	E	Copier lease	Office Mgr./Leasing Mgr.	Y	HTA		
EDN600/551	A	\$ 45	M	\$ 1,620.00	\$ 1,215.00	07/01/12	07/12/12	06/30/15	Advanced Protection Network	S	Alarm system; Oahu Admin. Office	Bus. Mgr./Leasing Mgr.	Y	HTA		

Department of Education - Charter Schools
Active Contracts

Prog ID	MOF	Amount	(M/A/O)	Max Value	Outstanding Balance	Date Executed	From	To	Organization	E/L/P/C/ G/S	Description	How Contract is Monitored	POS Y/N		
EDN600/546	AWN	Per lunch 4.35-5.40 per breakfast 3.55	M - For meals ordered			09/01/12	09/01/12	05/31/13	Lanakila Kitchen	S	Packagaed Breakfast and Lunch Meals	Meal charges are crossed checked with meals records of meals ordered/ received	Y	HLC	
EDN600/546	A	\$ 510	M	\$ 30,590.00	\$ 15,834.00	07/20/11	08/01/11	07/13/16	Xerox	E	Lease Xerox Copier sCQ9301	Billed monthly - check against meter reading	N	HLC	
EDN600/546	A	\$ 157	M	\$ 156.75	\$ -	12/15/08	month	month	Central Self Storage	L	Storage Space for archived documtents	Billed and paid monthly	N	HLC	
EDN600/546	A/don	\$ 15,340	A	\$ 15,340.31	\$ -	09/04/12	09/04/12	09/03/13	e2020 (education 2020)	S	1 year user license - Education 2020 online curriculm	Monitored by educational and technical staff	Y	HLC	
EDN600/546	A	\$ 840	M	\$ 10,080.00	\$ 5,040.00	07/01/12	07/01/12	06/30/13	k & M Janitorial Service	S	Cleaning of 3 cottages and 1 office once a week	Monitored by office staff	Y	HLC	
EDN600/546	A	Per payroll fees	O - semi montly charges	\$ 2,500.00	\$ -	10/01/03	year	year	Ceridian Payroll Service	S	Process payroll and taxes semi montly	Monitored monthly by Fiscal Manager	Y	HLC	
EDN600/566		\$ 500	M	\$ 5,998.32	\$ -	07/09/12	07/09/12	06/09/17	Ricoh	E	Copier Lease		N	Kona Pacific	
EDN600/566		\$ 13,750	M	\$ 164,998.80	\$ -	10/28/11	10/28/11	10/28/51	Friends of KPPCS	L	Campus Lease		N	Kona Pacific	
15137/396	A	\$30,000	M	\$ 360,000.00	\$ -			open	DayLum Management	L	Rental Space for K-8	By the school		Connections	
15137/396	A	\$10,000	M	\$ 120,000.00	\$ -	07/01/12	07/01/12	06/30/14	Glory Nani Mau	L	Rental Space for 9-12	Business		Connections	
15137/396	A	\$500	M	NA	\$ -			open	L&K Services	S	Cleaning	Manager		Connections	
15137/396	A	\$5,100	O- 2 pmts	\$ 10,200.00	\$ -	07/31/12	07/31/12	05/29/13	Cyрил Pahinui	S	Music Lessons/Instructional			Connections	
15137/396	A	\$177	bi monthly	NA	\$ -	12/28/11	12/28/11	open	Hilo Air Conditioning	S	AC Maintenance			Connections	
15137/396	A	\$233	bi monthly	NA	\$ -			open	Rainbow Isle Refrigerera	S	AC Maintenance			Connections	
15137/396	A	\$492	M	NA	\$ -	10/10/03	10/10/03	open	Countryside Express	S	Trash Removal			Connections	
15137/396	A	\$55	M	NA	\$ -	07/01/01	07/01/01	open	Alert Alarm	S	Alarm Services			Connections	
15137/396	A	\$78	M	NA	\$ -	12/17/08	12/17/08	open	Bowman	S	Pest Control			Connections	
15137/396	A	\$234	emi monthly	NA	\$ -			open	Ceridian	S	Payroll Services			Connections	
15137/396	A,N,W	\$3,500	O- Weekly	NA	\$ -	07/01/12	07/01/12	06/30/13	Boyd Enterprises	G	Meal Vendor			Connections	
15137/396	A	\$500	M	\$ 6,000.00	\$ 3,000.00	07/01/12	07/01/12	06/30/13	Cheryl Gravela	S	Book Keeping			Connections	

Department of Education - Charter Schools
Active Contracts

Table 16

Prog ID	MOF	Amount	(M/A/O)	Max Value	Outstanding Balance	Date Executed	From	To	Organization	E/L/P/C/ G/S	Description	How Contract is Monitored	POS Y/N		
15137/541	A	\$ 865.00	Monthly		\$ -	09/28/10	11/08/10	11/07/15	IKON	E	Equipment rental and service	"	Y	Voyager	
15137/541	A		Monthly		\$ -	07/15/11	07/31/11	07/30/12	Anago	S	Cleaning	"	Y	Voyager	
15137/541	A		Annual		\$ -	08/25/10	07/01/11	06/30/12	MOU with DOE	S	Courier Service with DOE	"	Y	Voyager	
15137/541	A		Monthly		\$ -	06/02/12	06/02/12	07/31/13	Food Service	S	Aliiolani School Break/Lunch meals	"	Y	Voyager	
15137/541	A		Monthly		\$ -	09/03/10	06/01/10	07/31/13	Voyager School Fnd	L	Rent/Lease	"	No	Voyager	
15137/541	A		Monthly		\$ -	07/01/10			Howe Stidger	S	Counseling	"	Y	Voyager	
15137/541	A		Monthly		\$ -	none			Oahu Computer	S	Networking	"	Y	Voyager	
15137/541	A		Monthly		\$ -	none			Hawaiian Telcom	S	Phones	"	Y	Voyager	
15137/541	A		Monthly		\$ -	06/27/11	07/01/11	06/30/13	Oceanic Cable	S	Internet	"	Y	Voyager	
EDN600/149	G	\$ 8,280	O/2X	\$ 16,560.00	\$ 8,280.00	06/15/12	07/21/12	06/30/13	Pacific American Foundation	S	Science Training & Consultation	By CEO	Y	Waialae	
EDN600/149	G	\$ 8,901	O/3X	\$ 26,701.56	\$ 8,701.56	08/15/12	08/15/12	12/31/12	Jeffrey W. Piontek	S	Technology Infrastructure & Instructional Technology	By CEO	Y	Waialae	
EDN600/149	G	\$ 1,693	M	\$ 101,587.80	\$ 16,931.30	09/24/09	09/24/09	09/24/13	Ricoh America	L	3 Copiers & 1 Fax Machine	Equipment Efficiency by Staff	N	Waialae	
398	A	\$14,700.00	A	\$ 14,700.00	\$ 84,000.00	05/22/12	05/22/12	05/31/13	HIDOE-School Food Sv	G/S	Student Meals-Delivery Services	Checklists/Invoices	Y	WOL	
398	A	\$360/mo	M	\$ 8,640.00	\$ 4,320.00	12/11/11	12/11/11	12/11/13	Xerox	G	Copy machines	Monthly bill	Y	WOL	
398	A	\$3,600/mo	M	\$ 129,600.00	\$ 111,600.00	07/01/11	07/01/12	06/30/15	St. Theresa Parish	E	Facilities Rental	Monthly inv/review	N	WOL	
398	A	\$3200/mo	M	\$ 25,600.00	\$ 19,200.00	09/19/12	09/16/12	05/17/13	M Kealamakia	S	Testing Coordinator	Timesheet/Sign-in	Y	WOL	
398	A	\$850/mo	M	\$ 8,500.00	\$ 5,950.00	08/10/12	08/10/12	06/30/13	Carbonaro CPA & Ass	S	Accounting Services	Monthly Bill	Y	WOL	
EDN600/548		\$ 733	M	\$ 8,796.00	\$ -	08/07/09	08/07/09	08/06/14	Ricoh	E	Copier Lease	Annual Audit	N	Innovations	
EDN600/548		\$ 362	M	\$ 4,344.00	\$ -	12/17/10	12/17/10	12/16/15	Ricoh	E	Copier Lease	Annual Audit	N	Innovations	
EDN600/548		\$ 30,000	M	\$ 360,000.00	\$ -	06/01/12	06/01/12	05/31/52	Innovations PCS Foundation	L	Program Occupancy Assessment Agreement	Annual Audit	N	Innovations	
EDN600/544	A	\$ 21,730	M	\$ 1,123,900.00	\$ 1,015,255.00	05/15/12	05/01/12	06/30/16	YWCA	L	Facility Lease - Honolulu	Contract Policy	N	MBTA	
EDN600/544	A	\$ 919	M	\$ 73,136.00	\$ 919.00	12/21/07	01/30/08	01/30/13	Xerox	E	Copier/Printer Equipment	Contract Policy	N	MBTA	
EDN600/544	A	\$ 193	M	\$ 11,580.00	\$ 11,193.52	12/07/12	07/19/12	07/19/17	Xerox	E	Copier/Printer Equipment	Contract Policy	N	MBTA	
EDN600/544	A	\$ 12,500	A	\$ 18,750.00	\$ -	01/09/12	01/09/12	06/30/13	Hawaii State Department of Education	S	Web conferencing services for faculty and students	Contract Policy	N	MBTA	

Department of Education - Charter Schools
Active Contracts

Table 16

Prog ID	MOF	Amount	(M/A/O)	Max Value	Outstanding Balance	Date Executed	From	To	Organization	E/L/P/C/ G/S	Description	How Contract is Monitored	POS Y/N		
EDN600/544	A	\$ 12,500	A	\$ 25,000.00	\$ -	09/02/11	09/15/11	09/14/13	Monterey Inst. For Tech & Educ	S	Online Curriculum	Contract Policy	N	MBTA	
EDN600/544	A	\$ 888	M	\$ 21,311.00	\$ 19,979.00	11/09/11	12/15/12	12/14/14	SystemMetrics	S	Server Facility	Contract Policy	N	MBTA	
EDN600/544	A	\$ 4,669	M	\$ 168,088.00	\$ 130,736.00	05/11/12	05/11/12	05/10/15	SystemMetrics	S	Internet, VOIP Phone, Service, Backup	Contract Policy	N	MBTA	
15137/399	A	\$ 615	M	\$ 36,901.00	\$ 33,826.00	06/07/12	09/01/12	08/31/17	Ricoh	L	Copier	Yearly Review	N	WHEA	
15137/399	A	\$ 1,407	M			Month to Month			State of HI- NELHA	L	Lease Rent	Yearly Review	N	WHEA	
15137/394	N	\$ 20,000	M	\$ 20,000.00	\$ 11,679.65	10/03/12	08/01/12	05/31/13	Andelle Keala Kahuanui	C	Provide Ike Hawai'i instruction and professional development for faculty and students	Waimea has established internal procedures to monitor contracts	Y	Waimea	
15137/394	N	\$ 25,000	O - Upon completion of work and invoice	\$ 25,000.00	\$ 25,000.00	07/01/11	07/01/12	06/30/13	N&K CPA's	C	Perform annual financial audit, including Single Audit	Waimea has established internal procedures to monitor contracts	Y	Waimea	
15137/394	N	\$ 814	A	\$ 814.32	\$ -	07/01/12	07/01/12	06/30/13	Alert Alarm Hawaii	S	Security Alarm	WMS has established internal controls to monitor contracts	Y	Waimea	
15137/394	N	\$ 17,000	M	\$ 17,000.00	\$ 8,291.26	10/01/11	07/01/12	06/30/13	Xerox Corporation	E	Xerox Machines and Services	WMS has established internal controls to monitor contracts	N	Waimea	
15137/394	N	\$ 12,647	A	\$ 12,647.00	\$ 11,647.00	06/30/12	07/01/12	06/30/13	Achieve 3000	G	Literacy Program	WMS has established internal controls to monitor contracts	N	Waimea	

Department of Education - Charter Schools
Active Contracts

Table 16

<u>Prog ID</u>	<u>MOF</u>	<u>Amount</u>	<u>(M/A/O)</u>	<u>Max Value</u>	<u>Outstanding Balance</u>	<u>Date Executed</u>	<u>From</u>	<u>To</u>	<u>Organization</u>	<u>E/L/P/C/ G/S</u>	<u>Description</u>	<u>How Contract is Monitored</u>	<u>POS Y/N</u>		
15137/394	N	\$ 1,500	M	\$ 1,500.00	\$ 750.00	06/27/10	07/01/12	06/30/12	Orkin Pest Control	S	Termite/Bug Specialist	WMS has established internal controls to monitor contracts	Y	Waimea	
15137/275		\$ 8,208	M	\$ 8,208.20	\$ 5,863.00	10/03/12	10/03/12	02/28/13	Russ Woosley	C	Provide technical support to eSIS team to review and update student information/registration files	Kamaile has established internal procedures to monitor contracts	Y	Kamaile	
SIG/275		\$ 3,875	O - upon completion of work	\$ 3,875.00	\$ -	09/13/12	09/13/12	10/31/12	Mr. D Math, LLC	C	Provide math/test prep professional development to teachers K-12	Kamaile has established internal procedures to monitor contracts	Y	Kamaile	
SIG/275		\$ 80,000	O - upon completion of work	\$ 80,000.00	\$ 47,800.00	07/30/12	07/01/12	06/30/13	Envision	C	Provide technical support and curriculum design for Grades 7-12	Kamaile has established internal procedures to monitor contracts	Y	Kamaile	
275		\$ 40,000	M	\$ 40,000.00	\$ 22,307.38	07/30/12	07/01/12	06/30/13	Pua Gomes	C	Provide Ike Hawai'i instruction; develop Project Based Learning Ike units	Kamaile has established internal procedures to monitor contracts	Y	Kamaile	
15137/275		\$ 82,000	M	\$ 82,000.00	\$ 49,757.38	07/12/12	07/01/12	06/30/13	Cyberwest Consulting Services	C	Provide IT support and technology training to all staff	Kamaile has established internal procedures to monitor contracts	Y	Kamaile	

Department of Education - Charter Schools
Active Contracts

Table 16

Prog ID	MOF	Amount	(M/A/O)	Max Value	Outstanding Balance	Date Executed	From	To	Organization	E/L/P/C/ G/S	Description	How Contract is Monitored	POS Y/N		
SIG/275		\$ 23,500	M	\$ 23,500.00	\$ 14,500.00	12/07/12	09/15/12	06/30/13	Brett Staib	C	Develop an eBook database system for pay for performance model	Kamaile has established internal procedures to monitor contracts	Y	Kamaile	
15137/275		\$ 28,000	O - Upon completion of work and invoice	\$ 28,000.00	\$ 28,000.00	07/01/11	07/01/12	06/30/13	N&K CPA's	C	Perform annual financial audit, including Single Audit	Kamaile has established internal procedures to monitor contracts	Y	Kamaile	
15137/275	A	ed: \$1,000,000	O - Per Plate Charge			01/25/11	07/01/12	06/30/13	Sodexo	S	Food Service for breakfast, lunch and snacks	Kamaile has established internal controls to monitor contracts	Y	Kamaile	
275	A	\$ 6,000	A	\$ 3,000.00	\$ -	07/01/12	07/01/12	06/30/13	Teach For America	S	Educational Professional Services	Kamaile has established internal controls to monitor contracts	Y	Kamaile	
15137/275	A	\$ 6,000	A / M	\$ 6,000.00	\$ 1,287.00	07/01/12	07/01/12	06/30/13	Sonitrol of Hawaii	S	Alarm System	Kamaile has established internal controls to monitor contracts	Y	Kamaile	
15137/275	A	\$ 2,750	M	\$ 2,750.00	\$ 1,611.00	07/01/12	07/01/12	06/30/13	Copesan	S	Pest Control Services	Kamaile has established internal controls to monitor contracts	Y	Kamaile	
EDN600/549	PPA	\$ 1,200	monthly	\$14,400.00		07/01/12	July	06/01/13			IT	monthly		Ke Ana La`ahana	
549	OHA	\$ 3,000	monthly	\$30,000.00		08/01/12	August	05/30/14			Na Papa Naue Loa	monthly		Ke Ana La`ahana	

Department of Education - Charter Schools
Active Contracts

<u>Prog ID</u>	<u>MOF</u>	<u>Amount</u>	<u>(M/A/O)</u>	<u>Max Value</u>	<u>Outstanding Balance</u>	<u>Date Executed</u>	<u>From</u>	<u>To</u>	<u>Organization</u>	<u>E/L/P/C/ G/S</u>	<u>Description</u>	<u>How Contract is Monitored</u>	<u>POS Y/N</u>		
EDN600/549	PPA	\$ 100	monthly	\$1,200.00		03/01/12	April	03/30/13			license fee	monthly		Ke Ana La`ahana	
EDN600/549	PPA	\$ 556	monthly	\$6,672.00		06/30/12	June	05/31/13			storage fee	monthly		Ke Ana La`ahana	
EDN600/547	A	\$ 39,247	A	\$39,247	\$9,137	10/21/12	10/21/12	06/30/13	SchoolRise	S	Contract for Educational Service	Invoices and services performed are verified with deliverables stated on contract	Y	Kamakau	
EDN600/547	A	\$ 585	M	\$35,100	\$0	05/25/11	05/25/11	04/30/16	Marlin Business Bank	E	Lease agreement for 3 copy machines	Invoices and services performed are verified with deliverables stated on contract	N	Kamakau	
EDN600/547	A	\$ 513	Quarterly	\$9,234	\$0	04/10/11	04/10/11	09/30/15	Pitney Bowes	E	Lease agreement for postal machine	Invoices and services performed are verified with deliverables stated on contract	N	Kamakau	
EDN600/547	A	\$ 12,009	M	\$7,277,303	\$0	02/01/10	02/01/10	08/31/60	Kai Loa	L	Rental agreement for facilities	Annual Review	N	Kamakau	
EDN600/547	A	\$ 13,500	O-One time payment based on invoice	\$27,000	\$0	10/11/12	10/11/12	N/A	Choo, Osada & Lee CPA's	S	Audit fees	Invoices and services performed are verified with deliverables stated on contract	Y	Kamakau	

Department of Education - Charter Schools
Active Contracts

Table 16

<u>Prog ID</u>	<u>MOF</u>	<u>Amount</u>	<u>(M/A/O)</u>	<u>Max Value</u>	<u>Outstanding Balance</u>	<u>Date Executed</u>	<u>From</u>	<u>To</u>	<u>Organization</u>	<u>E/L/P/C/ G/S</u>	<u>Description</u>	<u>How Contract is Monitored</u>	<u>POS Y/N</u>		
EDN600/542	A	\$ 4,350	M	\$37,800	\$0	10/01/12	10/01/12	06/30/13	Charter School Management Corp	S	Business back office support	Invoices and services performed are verified with deliverables stated on contract	Y	Halau Lokahi	
EDN600/542	A	\$ 24,000	M	\$288,000	\$0	07/01/12	07/01/12	06/30/13	Waiakamilo Properties	L	Rental for facilities	Annual Review	N	Halau Lokahi	
EDN600/542	A	\$ 1,083	M	\$13,000	\$0	08/04/12	08/04/12	07/31/13	Genius	S	Online curriculum services	Invoices and services performed are verified with deliverables stated on contract	Y	Halau Lokahi	
EDN600/542	A	\$ 1,511	M	\$16,623	\$0	08/01/12	08/01/12	06/30/13	Connections	S	Online curriculum services	Invoices and services performed are verified with deliverables stated on contract	Y	Halau Lokahi	
EDN600/734	A	\$ 439	M						Xerox Corporation		Xerox Machines and Services	Base rent		CSAO	
EDN600/734	A	\$ 7,286	M					08/2011	1103, LLC		Office Lease	Base rent plus CAM		CSAO	
EDN600/734	A	\$ 510	M				Month to Month		Natural Energy Laboratory of Hawaii Authority		Office Lease	Base rent		CSAO	

Department of Education - Charter Schools
CIP Requests

Table 17

<u>Prog ID</u>	<u>Prog ID Priority</u>	<u>Dept- Wide Priority</u>	<u>Project Title</u>	<u>MOF</u>	<u>FY14 \$\$\$</u>	<u>FY15 \$\$\$</u>
EDN600	1	1	KAWAIKINI PCS PHOTOVOLTAIC PANEL ARRAY, KAUAI	C		\$ 216,000
EDN600	2	2	VOLCANO PCS PHOTOVOLTAIC PANEL ARRAY, HAWAII	C		\$ 85,000
EDN600	3	3	WEST HAWAII EXPLORATIONS ACADEMY PCS CAMPUS RELOCATION, HAWAII	C	\$ 5,000,000	\$ 5,000,000
EDN600	4	4	THE EDUCATION LABORATORY PCS REPLACEMENT BUILDING, OAHU	C	\$ 2,000,000	\$ 15,000,000
EDN600	5	5	KAWAIKINI PCS SAFETY LIGHTING AND ACCESSIBILITY, KAUAI	C		\$ 204,000
EDN600	6	6	KAWAIKINI PCS LIBRARY AND COMPUTER LAB, KAUAI	C		\$ 500,000
EDN600	7	7	KANU O KA AINA NCPCS CAFETERIA, HAWAII	C	\$ 3,746,000	

Department of Education - Charter Schools
CIP Lapses

Table 18

<u>Prog ID</u>	<u>Act/Year of Appropriation</u>	<u>Project Title</u>	<u>MOF</u>	<u>Amount \$\$\$\$</u>	<u>Reason</u>
None					

Department of Education - Charter Schools
Division Resources - Listing of Charter Schools And Their ORGIDs

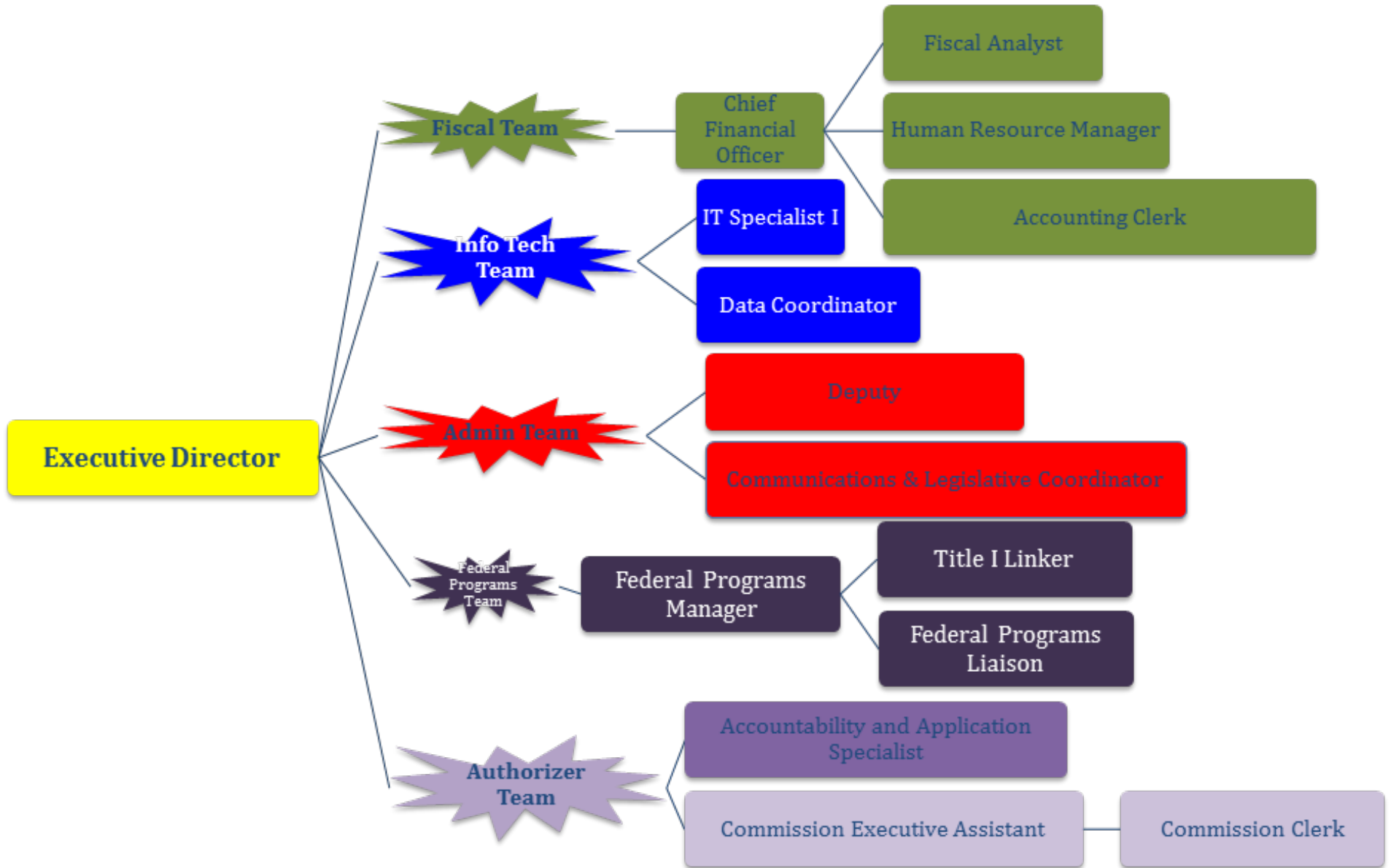
Table 19

<u>Division</u>	<u>Associated Program IDs</u>						
WAIALAE-PCS	149						
KAMAILE	275						
LANIKAI-PCS	320						
WAIMEA MID-PCCS	394						
LAUPAHOEHOE	377						
CONNECTIONS-PCS	396						
KANU O KA'AINA-PCS	397						
WATERS OF LIFE-PCS	398						
WEST HI EXPLOR ACAD-PCS	399						
KUALAPUU	411						
KANAKA-PCS	466						
HALAU KU MANA-PCS	540						
VOYAGER-PCS	541						
HALAU LOKAHI NC-PCS	542						
EDUC LAB: A HAWAII NC-PCS	543						
MYRON THOMPSON ACAD-PCS	544						
KA WAIHONA O KA NAAUAO-PCS	545						
HAKIPU'U LEARNING CTR-PCS	546						
KE KULA O KAMAKAU LAB-PCS	547						
INNOVATIONS-PCS	548						
KE ANA LA'AHANA-PCS	549						
HAWAII TECHNOLOGY ACADEMY	551						
KIHEI PC SCHOOL-PCS	554						
KE KULA NIIHAU KEKAHA-PCS	556						
KUA O KA LA-PCS	557						
VOLCANO SCH OF A&S-PCS	560						
HI ACADEMY OF A&S-PCS	561						
KA 'UMEKE KA'EO-PCS	562						
NAWAHI IKI LAB-PCS	563						
KANUIKAPONO-PCS	564						

Department of Education - Charter Schools
 Division Resources - Listing of Charter Schools And Their ORGIDs

Table 19

<u>Division</u>	<u>Associated Program IDs</u>						
KAWAIKINI	565						
KONA PACIFIC	566						



Department of Education - Charter Schools
Organization Changes

Table 20

<u>Year of Change</u> FY13/FY14	<u>Page</u> <u>Number</u>	<u>Description of Change</u>
------------------------------------	------------------------------	------------------------------