

COPY

House District: 13, 19, 18, 17

Senate District: 38, 41, 39, 40, 28

THE TWENTY-SEVENTH LEGISLATURE  
APPLICATION FOR GRANTS & SUBSIDIES  
CHAPTER 42F, HAWAII REVISED STATUTES

Log No:

For Legislature's Use Only

Type of Grant or Subsidy Request:

GRANT REQUEST – OPERATING

GRANT REQUEST – CAPITAL

SUBSIDY REQUEST

"Grant" means an award of state funds by the legislature, by an appropriation to a specified recipient, to support the activities of the recipient and permit the community to benefit from those activities.

"Subsidy" means an award of state funds by the legislature, by an appropriation to a recipient specified in the appropriation, to reduce the costs incurred by the organization or individual in providing a service available to some or all members of the public.

"Recipient" means any organization or person receiving a grant or subsidy.

STATE DEPARTMENT OR AGENCY RELATED TO THIS REQUEST (LEAVE BLANK IF UNKNOWN):

STATE PROGRAM I.D. NO. (LEAVE BLANK IF UNKNOWN):

1. APPLICANT INFORMATION:

Legal Name of Requesting Organization or Individual:  
Young Men's Christian Association of Honolulu

Dbas: YMCA of Honolulu

Street Address: 1441 Pali Highway, Honolulu, HI 96813

Mailing Address: 1441 Pali Highway, Honolulu, HI 96813

2. CONTACT PERSON FOR MATTERS INVOLVING THIS APPLICATION:

Name MAILE KANEMARU

Title Executive Director – Weed & Seed

Phone # (808) 225-3158

Fax # (808) 533-1286

e-mail mkanemaru@ymcahonolulu.org

3. TYPE OF BUSINESS ENTITY:

- NON PROFIT CORPORATION
- FOR PROFIT CORPORATION
- LIMITED LIABILITY COMPANY
- SOLE PROPRIETORSHIP/INDIVIDUAL

6. DESCRIPTIVE TITLE OF APPLICANT'S REQUEST:

WEED AND SEED STRATEGY – OPERATING FUNDS REQUESTED FOR ONE (1) YEAR. YMCA OF HONOLULU TO SERVE AS FISCAL AGENT.

4. FEDERAL TAX ID #: [REDACTED]

5. STATE TAX ID #: [REDACTED]

7. AMOUNT OF STATE FUNDS REQUESTED:

FISCAL YEAR 2014: \$ 413,445

8. STATUS OF SERVICE DESCRIBED IN THIS REQUEST:

- NEW SERVICE (PRESENTLY DOES NOT EXIST)
- EXISTING SERVICE (PRESENTLY IN OPERATION)

SPECIFY THE AMOUNT BY SOURCES OF FUNDS AVAILABLE AT THE TIME OF THIS REQUEST:

STATE \$ 336,000

FEDERAL \$

COUNTY \$150,000

PRIVATE/OTHER \$80,310

TYPE NAME & TITLE OF AUTHORIZED REPRESENTATIVE:

[REDACTED]

MICHAEL DOSS, EXECUTIVE VP & COO  
NAME & TITLE

Jan. 31, 2013  
DATE SIGNED

**APPLICATION FOR GRANTS AND SUBSIDIES  
2013**

**I. BACKGROUND AND SUMMARY**

**1. A brief description of the applicant's background**

Weed and Seed (W&S) is a program sponsored by the United States Attorney's Office in partnership with the YMCA of Honolulu. A comprehensive multi-agency approach to law enforcement, crime prevention and community revitalization, W&S currently operates in three areas on Oahu: Kalihi-Palama-Chinatown-Ala Moana-Sheridan-McCully ("Kalihi-Honolulu"); Waipahu; and Ewa-Ewa Beach. Today, "Weed and Seed" is a recognized "brand name" in Hawaii, having been in existence since 1998. It is a robust program, doing substantial good in our communities by bringing people and resources together to prevent and control crime and to improve the overall quality of life for those living or working in these communities.

W&S is a collaborative effort among law enforcement agencies at the federal, state, and county levels, social service agencies, private businesses, faith-based organizations, the public sector including city, state and federal departments, schools, nonprofit organizations, and residents to reclaim, restore, and rebuild communities. The four key elements of the W&S program are:

- (1) Law enforcement;
- (2) Community policing;
- (3) Prevention, intervention, and treatment programs; and
- (4) Neighborhood restoration.

See Appendix A for a description of these 4 key elements.

W&S works with local law enforcement to prevent, control, and reduce violent crime, drug abuse, and gang activity in targeted neighborhoods by "weeding" out the criminal element in the community. Community policing involves having police officers work closely with community residents to develop solutions to violent and drug-related crimes. "Seeding" the community involves collaboration among various human services and other organizations to implement prevention, intervention treatment, and neighborhood revitalization projects, programs, and activities.

**2. The goals and objectives related to the request**

This request proposes to establish a W&S program within the Department of Labor and Industrial Relations to carry out the following goal and objectives of W&S, and to perhaps expand its scope to include other communities throughout the island of Oahu and possibly the State of Hawaii.

The overall **goal** of W&S is to reduce violent and drug-related crime in designated high-crime communities in Hawaii through a comprehensive approach intended to reduce and prevent crime and improve residents' overall quality of life. As a result,

law-abiding citizens are able to live, work and raise their families in a safer and more prosperous environment.

The **primary objectives** of each W&S site are as follows:

- Development of a comprehensive community-based strategy to control and prevent violent crime, gang activity, drug trafficking, and drug-related crimes.
- Coordination of existing and new government and private-sector initiatives, criminal justice efforts, and human services, and concentration of those resources in designated neighborhoods to maximize their impact.
- Mobilization of community residents to: (1) assist law enforcement in identifying and removing violent offenders and drug traffickers from their neighborhoods; (2) assist human service agencies in identifying and responding to social service needs; and (3) elicit greater participation in community planning and decision making processes.

Since the implementation of the W&S program, not only has crime decreased significantly in the W&S areas, the communities themselves are far more cohesive and less distressed than in days prior to the implementation of W&S. The W&S officers work closely with the communities in which they are assigned, with the W&S Program Directors often working as a liaison between the respective communities and HPD. In addition, while W&S officers continue to carry out their responsibilities with respect to public safety, their approach for W&S is proactive (versus reactive). They are thus involved with many seeding activities with youth and other residents, building bonds of trust over the years.

There has also been a greater collaboration amongst residents, businesses, HPD, organizations, schools, churches, and other agencies because W&S serves to bring all parties together. Leveraging of human and financial resources has led to greater community participation and vast improvements in the W&S neighborhoods.

**3 State the public purpose and need to be served.**

The State has benefited greatly from the W&S program which is based on a two-pronged approach whereby: (1) law enforcement agencies and criminal justice officials cooperate with local residents to “**weed out**” criminal activity in the designated area; and (2) social service providers and economic revitalization efforts are introduced to “**seed**” the area, ensuring long-term positive changes and a higher quality of life for residents. The program's success warrants the continued operation of W&S in those communities, and envisions expanding it to other communities in the future.

**4. Describe the target population to be served.**

The target population would include those who currently live, and/or work in the three designated W&S sites on Oahu (Kalihi-Honolulu; Waipahu; and Ewa-Ewa Beach), as well as those who live in other areas if the program is expanded to include other areas.

The Kalihi-Honolulu and Waipahu sites have over 51% of the population that are low-moderate income and 49% of Ewa's population are of low-moderate income. The Kalihi-Honolulu and Waipahu sites also have public housing projects within their areas, and all three sites have subsidized housing developments.

Using Department of Justice criteria, these sites were designated as having high crime, drug related crime, truancy, gang related crime, high unemployment, high number of persons under correctional supervision, public housing developments, limited economic activity and a lack of organized groups.

**5. Describe the geographic coverage.**

The strategy will continue its work in the three designated W&S sites: Kalihi-Honolulu, Waipahu and Ewa-Ewa Beach. Indirectly, however, neighboring communities will benefit from the model strategies and systems of the W&S program.

**II. SERVICE SUMMARY AND OUTCOMES**

**1. Describe the scope of work, tasks and responsibilities.**

**Scope of work for Executive Director**

- Participate in Strategic Planning with the Resource Committee, chaired by US Attorney.
- Facilitate monthly meetings with all W&S officers and staff.
- Facilitate participation by City and County Prosecutors.
- Serve as the communication link between US Attorney and W&S staff.
- Serve as advocate for W&S Strategy.
- Foster community involvement in targeted areas.
- Coordinate projects with various agencies that involve all three sites.
- Serve as the spokesperson on behalf of W&S when necessary.
- Connect the three W&S sites for activities when appropriate.
- Pursue additional resources of funding for the W&S.

**Scope of work for Program Directors**

- Work with residents in the community to help identify their needs.
- Once needs are identified, work with service providers in the community and link them with residents to maximize coordination of existing resources and initiatives.
- Facilitate collaboration among agencies so they will be more responsive to the needs of the residents. Engage all members of the community. Attend community events and meetings to be informed on what is happening in the community. Support economic initiatives. Inventory the resources and programs in the designated neighborhood and continually update the inventory.
- Maintain contact with the community by meeting with residents and attending meetings and events organized by community groups to be informed of the needs of the residents; facilitate and mediate between community members, as necessary.
- Interact and build relationships with those of different cultures, as well as with elected

and governmental officials. Build and maintain partnerships with these offices, as necessary.

- Speak in front of groups of varying sizes.
- Delegate and follow-up when working with the residents and community organizations.
- Maintain a positive relationship with community agencies and businesses to facilitate communication among agencies in the community. This will avoid duplication of services, support programs initiated by community groups, and support good working relationships between the agencies and residents.
- Provide support to enhance successful established programs and coordinate with W&S police officers to develop intervention and prevention programs.
- Prepare monthly reports on site activities for the W&S Steering Committee, as required under the W&S Grant.
- Provide staff support to the W&S Committees in the Site.
- Build capacity of the community and assist in developing a long-range sustainability plan Utilize organizational skills for record keeping, monitor W&S partners, follow-up, and keep track of various timelines and deadlines.
- Develop resources and a sustainability infrastructure for "seeding" efforts.
- Evaluate existing systems; fundraise if necessary; and perform other duties as assigned.

#### **Scope of Work for the Program Aides**

The Program aides will assist the Program Directors by:

- Providing clerical support.
- Maintaining contact with community members.
- Attending meetings as assigned.
- Working with the community in implementing community events/activities.
- Assisting with program statistics and reports.
- Performing other duties as assigned.

#### **2. Projected annual timeline for accomplishing the results or outcomes of the service.**

See Appendix B.

#### **3. Description of quality assurance and evaluation plans for the request; how the applicant plans to monitor, evaluate and improve their results.**

Day-to-day progress of each site will be measured and evaluated through Project Management tools exercised by the W&S Executive Director.

The program, in its entirety, will be accountable and responsible to the "W&S Site-Wide Steering Committee", made up of volunteer community members.

#### **4. Measures of effectiveness that will be reported to the State agency through which grant funds are appropriated (the expending agency).**

The following are measures of effectiveness to be reported to the expending agency. Figures shown are for the three sites combined.

Law Enforcement

- 3 businesses that conduct gambling activity identified
- 5 businesses that conduct prostitution identified
- 2 business that conduct drug trafficking identified
- 2 meetings between ICE, RICO, and other governmental agencies
- 3 walk-through inspections/sweeps (e.g., massage parlors)
- 10 truancy sweeps
- 6 warrant sweeps

Community Policing

- Increase visibility of Citizen's Patrol Groups by using easily identifiable standard Citizen's Patrol T-Shirts.
- Connect Citizen's Patrol groups and NSW's to property managers and legal agents of properties to alleviate graffiti and illegal activity issues
- Participate in National Night Out Celebration
- Currently 899 are involved in Community Policing - increase by 10%
- Currently 12 Neighborhood Security Watch Groups - increase by 10%
- 500 people will be in attendance at the National Night Out Celebration held in the summer of 2013.

Prevention, Intervention, and Treatment

- 6 community events
- 6 anti-drug presentations
- 12 sessions of mentoring programs with teens and police officers
- 1 culinary arts class with teens and police officers
- 10 sessions of life skills topics with Federal Bureau of Investigation (FBI)
- 6 sessions with teens on "Don't Drink & Drive / Drive Safe" campaign

Neighborhood Restoration

- 500 volunteer participants in Neighborhood Restoration projects and activities
- 6 schools or youth groups participate in clean-ups
- 5 businesses will be approached to support or donate supplies for Neighborhood Restoration efforts in the sites.
- 8 Neighborhood Restoration Projects

**III. FINANCIAL****Budget****1. Budget that details the cost of the request.**

(See Appendix C.)

**2. Anticipated quarterly funding requests for FY 2014.**

Quarter 1	Quarter 2	Quarter 3	Quarter 4	Total Grant
\$103,361	\$103,361	\$103,361	\$103,362	<b>413,445</b>

**3. Listing of all other sources of funding that we are seeking for FY 2014.**

The following are sources of funding that W&S obtained during CY 2012 and will again be seeking for FY 2014.

• Cedar Assembly of God	\$ 500
• City Mill	\$ 100
• EKI Cyclery	\$ 200
• Kalihi Ahupua'a Ulu Pono Ahaniu	\$ 60
• Hawaii USA Federal Credit Union (Kupuna Conference)	\$ 1,000
• Waipahu CBDO -	\$ 2,500
• HEI -	\$ 1,000
• Waipahu LLC, dba Meridian Pacific -	\$ 1,200
• JT's Mobile Mini Golf Rentals LLC -	\$ 250
• Gentry Homes	\$ 1,000
• Haseko	\$ 1,000
• D.R. Horton-Schuler Division	\$ 2,500
• McDonalds (Ewa Beach)	\$ 2,500
• HECO (Culinary Program)	\$ 1,000
• The Gas Company (Culinary Program)	\$ 1,000
• Hawaii Community Foundation (Grant)	\$ 5,000
• James & Abigail Campbell Family Foundation	\$50,000
• Safeway (Ewa Beach)	\$ 2,500
• Grace Pacific	\$ 1,000
• Ewa Beach Lions Club	\$ 500
• Ewa Beach CBDO (CHSS Grant)	\$ 5,000
• Individual and miscellaneous donors	<u>\$ 500</u>
	<b>\$80,310</b>

4. **Listing of all State and Federal tax credits granted within the prior three years. Listing of all State and Federal tax credits for which we have applied and or anticipate applying for pertaining to any capital project, if applicable.**

Not applicable.

#### **IV. EXPERIENCE AND CAPABILITY**

##### **A. Necessary Skills and Experience**

Two full-time Program Directors, a part-time Executive Director and four part-time Program Aides would be funded through this request. Currently, a part time Executive Director and two Program Directors run the program, with Site I's responsibilities being split between the two Program Directors. This structure would continue under the proposal, with the addition of four part-time Program Aides to assist the Program Directors with their heavy workload. The Executive Director and Program Directors all have the necessary skills, abilities, knowledge of, and experience relating to the request, and have worked with the community to plan, organize, implement, and leverage resources to carry out the following projects/programs, each of which has been in existence for at least three years.

- National Night Out – More than 500 people attend this annual celebration of "Taking Back Our Community" and keeping our neighborhood safe.
- Real and Powerful (RAP) and Teen RAP – Under these programs, police officers mentor teens.
- Youth Patrol - Police officers teach teens to keep their community safe.
- Culinary Arts - Police officers work with a guest chef or chefs to teach teens life skills through a summer cooking program.
- Drive Safe 4 Ewa – This community outreach program involves the community working with police officers in a "Don't Drink and Drive" campaign.
- Urban 808 – Police officers are involved with youth and graphic artist(s) in doing street art instead of negative graffiti.

Resumes of the Executive Director and Program Directors are included as Appendix D. As a preface, please note that all have been involved with W&S for several years.

##### **B. Facilities**

**Description of applicant's facilities and adequacy in relation to the request. Also describe how the facilities meet ADA requirements, as applicable.**

The following are the addresses of the applicant's office and meeting locations for the W&S sites. All of the facilities are ADA compliant. Floor plans of each of these places can be made available upon request.



### **Kalihi-Honolulu Site**

The Program Director's office is located at Kaahumanu Homes, a public housing project of the State of Hawaii. Meeting places vary within Site I, but for the most part, Steering Committee meetings are held at Palama Settlement and Kamehameha Homes. The addresses are as follows:

1. The Program Director's Office is located at Kaahumanu Homes, 830 Waiakamilo Rd., Honolulu, Hawaii 96817-4326.
2. The Steering Committee meets at various places within Site I, but mainly at Palama Settlement, 810 North Vineyard Blvd., Honolulu, Hawaii, 96817 and at Kamehameha Homes, 1595 Haka Drive, Honolulu, HI 96817.

### **Waipahu Site**

The Program Director's office is located at the Leeward YMCA in Waipahu. The Steering Committee also meets at the Leeward YMCA in its Teen Center meeting room.

1. Office Address where the Weed & Seed Program Director is located is 94-440 Mokuola Street, Waipahu, Hawaii 96797
2. Meeting Place for the Steering Committee is at the Leeward YMCA Teen Center 2 – 94-440 Mokuola Street, Waipahu, Hawaii 96797. The Steering Committee meets every third Wednesday of the month.

### **Ewa -Ewa Beach Site**

The Program Director's office is located in the Hale Pono Boys and Girls Club in Ewa Beach, which also serves as the Safe Haven for the Ewa W&S site. The Steering Committee meets monthly at the Kapolei Police Station.

1. Office address of where Program Director is located: 91-884 Fort Weaver Road, Suite A, Ewa Beach, Hawaii 96706 (Hale Pono Boys and Girls Club in Ewa Beach)
2. Meeting Place for the Steering Committee is at the Kapolei Police Station - 1100 Kamokila Blvd, Kapolei, Hawaii 96707. The Steering Committee meets every third Tuesday of the month.

## **VI. PERSONNEL: PROJECT ORGANIZATION AND STAFFING**

### **A. Proposed Staffing, Staff Qualifications, Supervision and Training**

*The grant request would provide funding for one part-time Executive Director, 2 Program Directors, and 4 Program Aides, all of whom would be employees of the YMCA of Honolulu*

**1. Position: W&S Executive Director**

Status: Part time

Reports to: Chief Operating Officer of the YMCA of Honolulu

Basic Function: To oversee the W&S strategy on the Island of Oahu. This position will be responsible for coordinating the resources among the three W&S sites.

Job Duties:

- Communication link between US Attorney and W&S staff.
- Foster community involvement in targeted areas.
- Coordinate projects with various agencies that involve all three sites.
- Connect three sites for activities when appropriate.
- Pursue additional resources of funding for the W&S.
- Ensure that key components of W&S are implemented in all three sites.

**2. Position: W&S Program Director (2)**

Status: Full time

Reports to: W&S Executive Director

Duties and Responsibilities: Each Program Director is assigned to a designated Site and is supervised by the W&S Executive Director. The Program Directors provide program coordination for each respective W&S site.

The Program Director must be a "self-starter" and able to work independently, as well as in groups. An attitude of compassion for low-income and impoverished residents is needed balanced with an ability to teach them to help themselves versus having others do things for them. The Program Directors help to ensure that the scope of the strategy is carried out. This includes:

- Working with residents in the community to help identify their needs.
- Once needs are identified, working with service providers in the community and linking with residents to maximize coordination of existing resources and initiatives.
- Facilitating collaboration among agencies so they will be more responsive to the needs of the residents. Engaging all members of the community.
- Attending community events and meetings to be informed on what is happening in the community.
- Supporting economic initiatives.

Major duties and responsibilities of the Program Director include:

1. Inventorying the resources and programs in the designated neighborhood and

- continually update the inventory.
2. Maintaining contact with the community by meeting with residents and attending meetings and events organized by community groups to be informed of the needs of the residents.
    - Participation in these meetings may require the Program Director to facilitate and mediate between community members.
    - Community meetings will require interacting and building relationships with those of different cultures.
    - Community meetings will also require interacting with political offices. Building and maintaining partnerships with these offices will be necessary.
    - The Program Director may be required to speak in front of groups of varying sizes.
    - Delegation skills and follow-up skills will be necessary when working with the residents and community organizations.
  3. Maintaining a positive relationship with community agencies and businesses to facilitate communication among agencies in the community to avoid duplication of services, to support programs initiated by community groups, and to support good working relationships between the agencies and residents.
  4. Providing support to enhance successful established programs and coordinate with W&S police officers to develop intervention and prevention programs.
  5. Preparing monthly reports on site activities for the W&S Steering Committee, which is required under the W&S Grant.
  6. Providing staff support to the W&S Committees in the Site.
  7. Building the capacity of the community and assisting in developing a long-range sustainability plan.
  8. Utilizing organizational skills for record keeping, monitoring W&S partners, and following up.
  9. Keeping track of various timelines and deadlines.
  10. Developing resources and a sustainability infra-structure for "seeding" efforts.
  11. Evaluation systems will be required. Fundraising skills may be utilized.

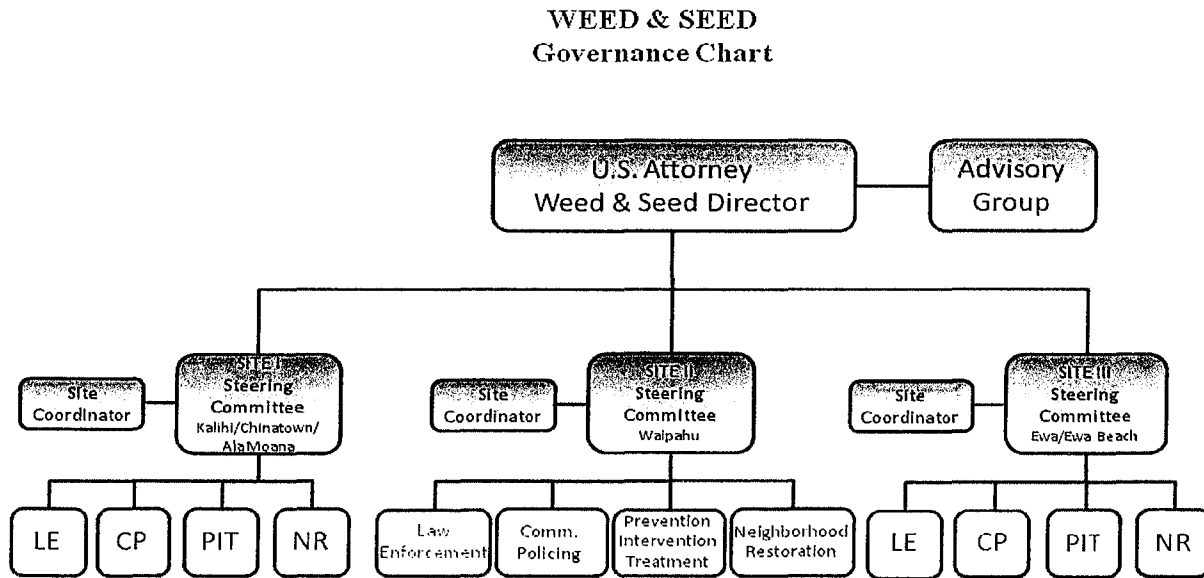
**3. Position: W&S Program Aide (4)**

Status: Part-time

Reports to: Program Director

Basic Function: To provide clerical and other support services to the Program Director.

**B. Organization Chart**



**VI. OTHER**

**A. Pending litigation to which W&S is a party.**

Not applicable.

**B. Licensure or Accreditation**

Not applicable.

## **APPENDIX A**

### **COMPONENTS OF THE WEED AND SEED PROGRAM**

### FOUR COMPONENTS OF THE WEED AND SEED PROGRAM

The Weed and Seed strategy is a multilevel strategic plan that includes four basic components.

#### 1. LAW ENFORCEMENT

The law enforcement component is a designated to weed out crime and violence, particularly violent crime, gang activity, drug trafficking, and drug-related crime. Efforts are directed mainly at most serious and visible criminals in the designated area. Reducing both crime and citizen fear returns hope to residents living in distressed neighborhoods and sets the stage for community revitalization.

In most Weed and Seed sites, crime suppression activities are undertaken by joint task forces that represent a collaboration of law enforcement agencies from all levels of government and benefit from the various resources each agency brings to the effort. Suppression activities include repeat-offender programs, gun abatement, targeted patrols, intensified drug investigations, and targeted prosecutions. Other law enforcement tactics involve various aspects of the criminal justice system, such as a community courts, victim-witness protection and services, and offender reentry programs.

#### 2. COMMUNITY POLICING

Community policing supports intensive law enforcement operations and serves as a bridge to the seeding components of Weed and Seed. Community policing embraces two key concepts: community engagement and problem solving. Under this model of policing, officers establish an ongoing dialog with community residents to solve crime problems through a systematic process that addresses the underlying causes of crime. Community policing strategies foster a sense of responsibility within the community for solving crime problems, focus on increasing police visibility, and develop cooperative relationships between police officers and residents. Examples of community policing activities include foot and bicycle patrols, police mini-stations, victim referrals to support services, nuisance abatement programs, and police athletic leagues.

Community mobilization is also important in community policing activities. Programs that encourage community participation and help prevent crime include neighborhood watches, citizen marches, and rallies, prayer services, drug-free zones, and graffiti removal.

#### 3. PREVENTION, INTERVENTION, AND TREATMENT

The prevention, intervention, and treatment component of the Weed and Seed strategy focuses on neighborhood efforts to enhance protective factors while reducing risks, thus promoting wholesome behavior that can lead to good health, well-being, and personal success.

- Risk factors such as economic deprivation, family management problems, and early academic failure increase the likelihood that a child will develop health and behavior problems in adolescence.
- Protective factors such as positive individual characteristics, bonding, healthy beliefs, and clear standards set by parents and society reduce the impact of risk factors on children.

The prevention, intervention, and treatment component concentrates an array of human services on the designated community to create an environment in which crime and violence cannot thrive. Links among law enforcement and social service agencies, the private sector, and the community must be strengthened to improve the overall quality of services to residents.

*Safe Havens* are important elements of the prevention, intervention, and treatment component. They provide a mechanism for organizing and delivering an array of youth-and-adult-oriented services in a multi-service setting such as a school or community center. All Weed and Seed programs include community-based services such as childcare, substance abuse treatment, mental health services, family counseling, and medical care.

#### 4. NEIGHBORHOOD RESTORATION

The fourth component of Weed and Seed focuses on improving and revitalizing the economic and social conditions of the designated communities through neighborhood restoration strategies. Expanding the economic vitality of a community helps to keep crime and disorder from thriving. As with the other Weed and Seed components, neighborhood restoration can be achieved only by coordinating federal, state, county, and private-sector resources. Strategies focus on economic development, employment opportunities for residents, and improvements to the housing stock and physical environment of the neighborhood.

**APPENDIX B**

**PROJECTED ANNUAL TIMELINE**

PROJECTED ANNUAL TIMELINE FOR ACCOMPLISHING THE RESULTS OR OUTCOMES OF THE WEED AND SEED PROGRAM

Objectives and Major Tasks	(Position)	Month											
		1	2	3	4	5	6	7	8	9	10	11	12
<b>Kalihi-Palama-Chinatown-Downtown-Kaheka-Sheridan-Waipahu-Ewa-Ewa Beach</b>													
Address community concerns for violence, crime and fear of crime.	HPD and Site Coordinator	X	X	X	X	X	X	X	X	X	X	X	X
Carry out and increase participation in Community Policing programs (outreach, recruit, etc.)	HPD and Site Coordinator	X	X	X	X	X	X	X	X	X	X	X	X
Conduct investigations for drug trafficking	HPD	X	X	X	X	X	X	X	X	X	X	X	X
Address underage drinking (sweeps, etc.)	HPD	X	X	X	X	X	X	X	X	X	X	X	X
Address truancy issues and conduct sweeps	HPD	X	X	X	X	X	X	X	X	X	X	X	X
Carry out Traffic Awareness Campaign with schools, businesses and residents	HPD and Site Coordinator	X			X	X	X		X	X	X		X
Maintain safe haven and other physical focal points for service delivery	Site Coordinator	X	X	X	X	X	X	X	X	X	X	X	X
Support and participate in various Community Events that provide social services, resources, education, health awareness, life-skills, and alternative activities for youth and families.	Site Coordinator	X	X	X	X	X	X	X	X	X	X	X	X
Sponsor Community Beautification projects (Graffiti Paint-Out and Neighborhood Clean-Up)	Site Coordinator	X	X	X	X	X	X	X	X	X	X	X	X
Develop communication venues-newsletter, print media (emails, facebook page etc.)	Site Coordinator	X	X	X	X	X	X	X	X	X	X	X	X
Provide afterschool and seasonal programs for youth (Culinary Arts, Jr. Golf, Jr. Bowling, Oceansport, Teen Rap, Basketball,	HPD and Site Coordinator	X	X	X	X	X	X	X	X	X	X	X	X
Support and participate in adopted school activities	HPD and Site Coordinator	X	X	X	X	X	X	X	X	X	X	X	X
Support Community Based Development Organization (meetings/events) Waipahu & Ewa site	Site Coordinator	X	X	X	X	X	X	X	X	X	X	X	X
Maintain and support existing programs, promote interagency referrals/partnerships	HPD and Site Coordinator	X	X	X	X	X	X	X	X	X	X	X	X
Steering Committee Meetings, Community Coalition, Collaborative Partner, Sub-Committee Meetings	Site Coordinator	X	X	X	X	X	X	X	X	X	X	X	X




**APPENDIX C**

**BUDGET WORKSHEETS**

**BUDGET REQUEST BY SOURCE OF FUNDS**  
(Period: July 1, 2013 to June 30, 2014)

Applicant:       YMCA of Honolulu      

<b>BUDGET CATEGORIES</b>	<b>Total State Funds Requested (a)</b>	<b>(b)</b>	<b>(c)</b>	<b>(d)</b>
<b>A. PERSONNEL COST</b>				
1. Salaries	176,922			
2. Payroll Taxes & Assessments	19,461			
3. Fringe Benefits	28,767			
<b>TOTAL PERSONNEL COST</b>	<b>225,150</b>			
<b>B. OTHER CURRENT EXPENSES</b>				
1. Airfare, Inter-Island				
2. Airfare, out of State				
3. Audit Services	1,960			
4. Contractual Services - Subcontracts	84,000			
5. Insurance	3,135			
6. Lease/rental space	10,000			
7. Equipment	2,000			
8. Mileage	6,000			
9. Training	6,000			
10. supplies	14,200			
11. Telecommunication	2,500			
12. Transpotation	2,200			
13. Publication and Printing	9,000			
14 Postage, freight, delivery	5,000			
15. Indirect costs	41,300			
16. Admission Fees	1,000			
17				
18				
19				
20				
<b>TOTAL OTHER CURRENT EXPENSES</b>	<b>188,295</b>			
<b>C. EQUIPMENT PURCHASES</b>				
<b>D. MOTOR VEHICLE PURCHASES</b>				
<b>E. CAPITAL</b>				
<b>TOTAL (A+B+C+D+E)</b>	<b>413,445</b>			
<b>SOURCES OF FUNDING</b>		Budget Prepared By:		
(a) Total State Funds Requested	413,445	Maile Kanemaru	808-225-3158	
(b)		Name (Please type or print)	Phone	
(c)			1-31-13	
(d)		Signature of Authorized Official	Date	
<b>TOTAL BUDGET</b>	<b>413,445</b>	Michael Doss, Executive VP & COO		
		Name and Title (Please type or print)		

## BUDGET JUSTIFICATION PERSONNEL - SALARIES AND WAGES

Applicant: YMCA of Honolulu

Period: July 1, 2013 to June 30, 2014

POSITION TITLE	FULL TIME EQUIVALENT	ANNUAL SALARY A	% OF TIME ALLOCATED TO GRANT REQUEST B	TOTAL STATE FUNDS REQUESTED (A x B)
Executive Director	0.5	\$60,000.00	50.00%	\$ 30,000.00
Program Director	1	\$54,044.00	100.00%	\$ 54,044.00
Program Director	1	\$52,942.00	100.00%	\$ 52,942.00
				\$ -
Program Aide	0.48	\$20,800.00	48.00%	\$ 9,984.00
Program Aide	0.48	\$20,800.00	48.00%	\$ 9,984.00
Program Aide	0.48	\$20,800.00	48.00%	\$ 9,984.00
Program Aide	0.48	\$20,800.00	48.00%	\$ 9,984.00
				\$ -
				\$ -
				\$ -
				\$ -
				\$ -
				\$ -
				\$ -
<b>TOTAL:</b>				<b>176,922.00</b>
<b>JUSTIFICATION/COMMENTS:</b>				

## BUDGET JUSTIFICATION - EQUIPMENT AND MOTOR VEHICLES

Applicant: YMCA of Honolulu

Period: July 1, 2013 to June 30, 2014

DESCRIPTION EQUIPMENT	NO. OF ITEMS	COST PER ITEM	TOTAL COST	TOTAL BUDGETED
lap top computers			\$ 2,000.00	
			\$ -	
			\$ -	
			\$ -	
			\$ -	
<b>TOTAL:</b>			\$ 2,000.00	
<b>JUSTIFICATION/COMMENTS:</b> lap tops for Program Directors to do their work in the community				

DESCRIPTION OF MOTOR VEHICLE	NO. OF VEHICLES	COST PER VEHICLE	TOTAL COST	TOTAL BUDGETED
			\$ -	
			\$ -	
			\$ -	
			\$ -	
			\$ -	
<b>TOTAL:</b>				
<b>JUSTIFICATION/COMMENTS:</b>				

**BUDGET JUSTIFICATION  
CAPITAL PROJECT DETAILS**

Applicant: YMCA of Honolulu

Period: July 1, 2013 to June 30, 2014

FUNDING AMOUNT REQUESTED						
TOTAL PROJECT COST	ALL SOURCES OF FUNDS RECEIVED IN PRIOR YEARS		STATE FUNDS REQUESTED	OF FUNDS REQUESTED	FUNDING REQUIRED IN SUCCEEDING YEARS	
	FY: 2011-2012	FY: 2012-2013	FY:2013-2014	FY:2013-2014	FY:2014-2015	FY:2015-2016
PLANS						
LAND ACQUISITION						
DESIGN						
CONSTRUCTION						
EQUIPMENT					0	0
<b>TOTAL:</b>						
JUSTIFICATION/COMMENTS: Not Applicable						

**APPENDIX D**

**RESUMES OF WEED AND SEED DIRECTOR  
AND  
SITE COORDINATORS**

**MAILE KANEMARU**  
**94-277 Hokulewa Loop**  
**Mililani, Hawaii 96789**  
**Home: 808-623-8295 Mobile: (808)225-3158**

**Business: Leeward YMCA**  
**94-440 Mokuola Street**  
**Waipahu, Hawaii 96797**  
**(808) 440-9235**  
**mailek@hawaii.rr.com**

**EDUCATION:** University of Hawaii, Honolulu, Hawaii  
Bachelor of Arts in Sociology

**PROFESSIONAL EXPERIENCE:**

**Weed and Seed**

**Honolulu, Hawaii**

Executive Director

January 2002- present

Major Responsibilities: Oversight of Weed and Seed on the Island of Oahu (Waipahu, Ewa and Kalihi/Chinatown/Ala Moana).

\* Participate in Strategic Planning with the Resource Committee, chaired by the US Attorney.

\*Facilitate meetings with Weed and Seed police officers and staff

\*Foster community involvement in targeted areas

\*Pursue and secure resources for Weed and Seed sites

\*Develop capacity of residents and agencies in the sites

\*Develop operational procedures for the sites.

\*Implement principles of Weed and Seed: Cooperation, Coordination, Community participation and Leveraging

\*Assist stakeholders in identifying needs, and developing their capacity to implement their own solutions.

\*Ensures Sites are implementing the four components of Weed and Seed

**Central YMCA**

**Honolulu, Hawaii**

Branch Executive Director

June 2004 – December 2007

Major Responsibilities: Management of full-facility branch. Included 2,200 members in Health and Fitness, 1,000 youth and Resident rooms for 114 males. Responsible for supervision of Department Directors in Aquatics, Facilities, Resident Services, Health and Fitness, and General Administration. Total budget: 2 million

**Weed and Seed**

**Honolulu, Hawaii**

Site Coordinator

June 1998 – Dec 2001

Major Responsibilities: Coordinating the activities of organizations and agencies that committed services, volunteers, and contributions to the implementation of the Weed and Seed Strategy.

Implement principles of Weed and Seed: Cooperation, Coordination, Community participation, and Leveraging of resources.

Assist stakeholders in identifying needs, developing capacity and implementing their own solutions.

**Windward YMCA**

**Kailua, Hawaii**

Branch Executive Director

January 1996 – May 1998

Major Responsibilities: Management of Community Branch that included members in Health and Fitness, Aquatics, Teen and Child Care in A+ and Summer Day Camp Programs.

**Mililani YMCA**

**Mililani, Hawaii**

Branch Executive Director

January 1983-December 1995

Major Responsibilities: Capital Campaign to build new Mililani Branch. Oversight of construction of the new facility. Management of Branch that included members in Health & Fitness, Aquatics, Teen and Child Care in A+ and Summer Day Camp Programs and Y-Indian Guides (Parent/Child).

**West Oahu YMCA**

**Wahiawa, Hawaii**

Program Director

September 1980 – December 1982

Major Responsibilities: Management of Community Branch that included Child Care, Teens, Y Indian Guides (parent-child), and motor-cross bike program.

**Nuuanu YMCA**

**Pali Highway, Honolulu**

Department Head/Youth Program

1973 – August 1980

Major Responsibilities: Directed Tri-Hi-Y, Hi-Y (teen club program), Y-Winners Sports, School-age Child Care (after school, summer, holiday recreation), Learn-to-Swim and Junior Leader Program.

**Kalihi YMCA**

**Kalihi, Honolulu**

Associate Youth Director

August 1969 – 1973

Major Responsibilities: Directed Tri-Hi-Y and Hi-Y (teen club program), School age child care and assisted in Learn-to-Swim Program.

**Community Activities**

Soroptimist International of Central Oahu (Charter member, past President)

HMSA Foundation – Board member

West Oahu Y's Men and Women Club - member

Honolulu Japanese Chamber of Commerce - member



**GALE TSUYO BRACEROS**  
**1726 Komo Mai Drive**  
**Pearl City, Hawaii 96782**  
**Home: 808-744-7610 Mobile: 808-232-6437**

**Experience:** YMCA of Honolulu  
Kalihi Branch  
Weed and Seed  
December 14, 2009 – November 2012  
Present Position: Program Supervisor

**Duties:** Oversee the Weed and Seed Strategy for all three sites on Oahu, including the coordination of resources among the three Weed and Seed sites and serving as the official liaison between site coordinators and administrative branches of Weed and Seed.

Job duties are to:

- Provide resources and assistance to site coordinators.
- Coordinate projects with various agencies that involve all three sites.
- Connect three sites for activities when appropriate.
- Serve as advocate for Weed and Seed strategy.
- Serve as communication link between U.S. Attorney and Weed and Seed staff.
- Oversee site coordinators' daily operations.
- Oversee budgets and grants for all three sites.

YMCA of Honolulu  
Weed & Seed  
May 2, 2005 – Present  
Present Position: Site Coordinator

**Duties:** To coordinate opportunities for residents and businesses to work cooperatively in taking control of their neighborhoods for a cleaner, safer community that nurtures healthy family living and work environments. This effort includes developing collaborative, synergistic working relationships between social agencies, businesses, faith-based counsels, residents, and other community organizations. The focus is to facilitate positive community action, coordinate community communications, and serve as a liaison between the community, as a whole, and the Honolulu Police Department.

- Work with residents, businesses and service providers in the community to help identify problems and needs.
- Conduct community surveys in focus areas; collect data to identify the focus areas; establish a plan of action with sub-committees.
- Attend monthly Neighborhood Board Meetings, reporting upcoming events and answering any community concerns.
- Receive complaints and concerns, reporting illegal activities from the community to HPD for timely follow up.

- Attend Association meetings for 'Ewa/Ewa Beach area, conducting Weed & Seed presentations and providing basic training.
- Facilitate Weed & Seed Committee meetings (Neighborhood Restoration Committee, Economic Development Committee, Legislature Committee and Steering Committee).
- Participate in community events, providing resources and promoting active ties relating to Weed & Seed's strategies
- Facilitate and organize community events and projects with residents, businesses and service providers (Neighborhood Restoration Projects, Community Policing events and activities, Prevention, Intervention and Treatment events)
- Build active partnerships, in and out of the community, in support of community initiatives.
- Attend quarterly meetings at the US Attorney Office, providing site review reports to the U.S. Attorney and serving as a liaison between site coordinators and U.S. Attorney.
- Collect crime stats and monthly weeding activities from Weed & Seed Detail to include in monthly reports to U.S. Attorney Office.
- Keep accurate stats and data, as per Federal Government requirements.
- Complete federal reports: U.S. DOJ progress report, Government Performance and Result Act (GPRA) Report.
- Research stats and data required on all federal reports.
- Monitor all federal, state and city grants for assigned site.

**Accomplishments:** Nov. 2005 YMCA Group Work Training- Certificate of Completion

April 2007 Community Capacity Development Offices (DOJ):  
Weed & Seed Honolulu chosen one of 8 Best Practice Weed & Seed site nationally

May 2007 Kapolei Outstanding Achievement Award (KOA) for  
Community Service-Organization

Oct. 2007 McGruff's National Crime Prevention Award of  
Excellence-Crime Prevention Program of the Year

**Other Experience:** Honolulu Community Action Program, Inc.  
O'ahu Head Start June 1, 1987 to April 30, 2005  
Position Held: Family Advocate

**Duties:** As Family Advocate, my job was to assist families with resources, linking them with community opportunities, as well as with other agencies relevant to the individual needs. The work with each individual included assisting them in establishing their short-term and long-term goals; helping them to realize their strengths as well as their needs; developing and facilitating parent workshops and training on a monthly basis.

**Other Responsibilities:**



FAMR 133  
Working with People, FAMR 296  
Family Dynamics/Interviewing Difficult Families  
SOSER 21

Kapiolani Community College                    1975  
Certified Nursing Assistant  
Licensed Practical Nurse                        1977

Waianae High School                            1971-1975  
High School Diploma

**Training:**

Child Abuse/Neglect  
Second Step Program  
(Selected to attend training to develop parenting classes with parents).  
Drug Awareness/Recognizing the Problem  
Working with Micronesians/Learning their culture  
Federal Grant Application Training - 2007  
Community Leadership Training- 2006  
Helping Build Safer Communities- 2007  
Community Capacity Builders Forum – 2009  
Grassroots Leadership Development – 2009  
Strategic Thinking and Planning – 2009

**Conferences/**

**Training:**

Community Capacity Development Office (U.S. Department of Justice): August 22-25, 2005 – Community building and sustainability  
CCDO – March 27 – 30, 2006 – Strategy Development Training  
NeighborWorks America – October 12 – 15, 2006 – Plant a Seed of Change and Grow a Better Neighborhood  
NeighborWorks America- May 6-8, 2009  
    - Building Powerful Community Partnership  
    - Grassroots Leadership Development  
    - Strategic Thinking and Planning  
CCDO Implementation and Strategy Training – 2010  
Community Leadership Institute- Neighbor Works Training-2011  
National Crime Prevention Council- Gang Violence Awareness Prevention Training- October 2011  
NeighborhoodWorks of America- Community Leadership Institute Training- February 2012

References can be provided upon request.

**LORRIE W. KANNO**

**P. O. Box 971477**

**Waipahu HI 96797**

**Home: 808-626-2879 Cell: 808-497-8263**

**EDUCATION**

Bachelor of Arts – Social Work and Bachelor of Arts – Liberal Arts: Behavioral Science, 1989

CONCORDIA UNIVERSITY, Portland, Oregon

**WORK  
EXPERIENCE**

*Weed & Seed Coordinator, Site II – July 2009 to present*

*KALIHI YMCA, Honolulu, Hawai'i*

Responsible for maintaining an inventory of resources and programs in the designated neighborhoods, maintaining contact with the community by meeting with the residents and attending meetings and events organized by community groups to be informed of the needs of the residents, maintaining positive relationships with community agencies and businesses to facilitate communication among agencies in the community to avoid duplication of services, to support programs initiated by community groups, and to support good working relationships between agencies and residents, providing support to enhance successful established programs and coordinate with Weed & Seed police officers to develop intervention and prevention programs, preparing monthly reports on site activities for the Weed & Seed Steering Committee, providing staff support to the Weed & Seed Committees in the Site, building capacity of Community and assist in developing a long-range sustainability plan, utilizing organizational skills for record keeping, monitoring Weed & Seed partners, follow-up, and keeping track of various timelines and deadlines and developing resources and a sustainability infra-structure for "seeding" efforts.

*Rural Youth Program Director/Outreach Services Supervisor – October 2004 to June 2009*

*KALIHI YMCA, Honolulu, Hawai'i*

Responsible for the management of daily operations of sites from Waipahu to Waianae. Serves as a liaison between schools, service providers, churches, and families. Responsible for recordkeeping and site reports. Provides direct supervision to staff and monitors progress of program participants. Works Facilitates staff meetings/trainings and participates in Association personnel trainings/meetings and community activities/projects.

*Senior Program Director – June 1994 to September 2004*

*YMCA COMMUNITIES IN SCHOOLS OF HAWAI'I PROJECT, Waipahu, Hawai'i*

Responsible for the management of daily operations of site. Serves as a liaison between schools, service providers, churches, and families. Responsible for overall records and reports of various programs to funding sources; monitoring and reporting of select clientele. Responsible for the coordination of services for students and families, developing collaborations between service providers, bridging the community with resources, facilitation of all programs, production of quarterly newsletters, training in the 'Ohana Management System and supervision of all staff and volunteers. Works closely with Executive Director and other Program staff in

writing grants; facilitating staff meetings/trainings, participating in Association personnel trainings/meetings and community activities/projects.

**COMMUNITY SERVICE**

Scholarship Committee Member – July 2011 to present

*LEAHI SOCCER CLUB, Honolulu, Hawai'i*

Responsible for selection of scholarship recipients twice a year

Team Fundraising Coordinator – October 2012 to present

*LEAHI '01 PREMIER, Honolulu, Hawai'i*

Responsible for planning all fundraising events for the team and managing individual player accounts.

Parent Volunteer – August 2004 to present

*KAMEHAMEHA SCHOOLS CLASS OF 2017, 2019 & 2021, Honolulu, Hawai'i*

Assist with planning events for the families and students of KS Class of 2017, 2019 and 2021.

Volunteer Soccer Coach – January 2006 to March 2009

*AYSO WEST OAHU REGION 769, Waipahu, Hawai'i*

Responsible for coaching boys and girls basic soccer skills in the U5, U6, and U8 age division.

**CERTIFICATES** Enforcing Underage Drinking Laws – Oahu Island Training, Waipahu, Hawai'i, November 2012  
Introduction to Design Thinking, Design Thinking Hawai'i, Honolulu, Hawai'i, 2011  
Engage! Lead! Training, Neighbor Works America, Waipahu, Hawai'i, 2011  
Gangs 101 Workshop, Missouri Western State University Regional Community Policing Institute, Waipahu, Hawai'i, 2010  
First Aid/CPR for Adults, Medic First Aid, Honolulu, Hawai'i, August 2010  
Listen First, YMCA of Honolulu, Kalihi, Hawai'i, 2009  
Motivational Interviewing Basic and Advanced Skills, State of Hawai'i Department of Health Alcohol and Drug Abuse Division, Kapolei, Hawai'i, 2009  
Senior Director, YMCA of the USA, Honolulu, Hawai'i, November 2008  
Current Support Director Institute, YMCA of the USA, Honolulu, Hawai'i, May 2001  
Introduction to Not-For-Profit Marketing, YMCA of the USA, Honolulu, Hawai'i, November 1999  
Pricing, YMCA of the USA, Honolulu, Hawai'i, November 1999  
YMCA Program Management and Development, YMCA of the USA, Honolulu, Hawai'i, November 1999  
Grant Proposal Writing Workshop, The Grantsmanship Center, Honolulu, Hawai'i, May 1997  
Principles and Practices, YMCA of the USA, Berkeley, California, April 1997  
Group Work, YMCA of the USA, Honolulu, Hawai'i, March 1996  
Volunteerism and the YMCA, YMCA of the USA, Honolulu, Hawai'i, September 1995  
LTP Delivery Module, YMCA of the USA, Honolulu, Hawai'i, April 1995

Problem Solving and Decision Making and Substance Abuse Prevention, YMCA of the USA, Honolulu, Hawai'i, November 1993

Basics in Community Development, Working with 10-14 Year Olds and Working with 15-17 Year Olds, YMCA of the USA, Honolulu, Hawai'i, November 1992

Program Trainer Orientation, YMCA of the USA, Honolulu, Hawai'i, October 1992

**OTHER  
EXPERIENCE**

Gang Violence Prevention Training, National Crime Prevention Council, Waipahu, Hawai'i, 2011

CCDO National Conference, Department of Justice, Tampa, Florida, 2009

Healthy Honolulu Together Curriculum Writer, Kalihi YMCA, Honolulu, Hawai'i, 2009

Ka Ulu Pono Curriculum Writer, Kalihi YMCA, Honolulu, Hawai'i, 2009

Alaka'i Malama Academy Planning Team Advisor, Communities In Schools of Hawai'i, Waipahu, Hawai'i, 1995 to 2003

Living Aloha Through Volunteerism Regional Conference Facilitator, Communities in Schools of Hawai'i, Waipahu, Hawai'i, 1999

Orientation to Social Services Division, Philosophy & Resources (Family Centered Strengths & Needs Based Practice), Overview of CPS Statutes, HRS 350 & 587 and Behavioral & Physical Indicators of Child Abuse and Neglect Trainings, Department of Human Services, Honolulu, Hawai'i, 1999

Alaka'i Malama Academy Teen Group Advisor, Leeward YMCA, Waipahu, Hawai'i, 1992 to 1994

Hawaiian Leadership Development Conference, University of Hawai'i at Hilo, Hilo, Hawai'i, 1993 and 1994

Journey Workshop, Leeward YMCA, Waipahu, Hawai'i, 1994

YMCA Pacific Regional Conference GFT 1, Leeward YMCA, San Francisco, California, 1994

YMCA Youth Legislature State Advisor's Director, Leeward YMCA, Honolulu, Hawai'i, 1994

Assistant Boys Volleyball Coach, Pearl City High School, Pearl City, Hawai'i, 1989 to 1993

**AWARDS**

Environmental Hero Award of Recognition, Honolulu, Hawai'i, December 2012

Weed & Seed Honolulu chosen as 8 Best Practice Weed & Seed Site Nationally by Community Capacity Development Office (DOJ), April 2007

References available upon request.

**DECLARATION STATEMENT OF  
APPLICANTS FOR GRANTS AND SUBSIDIES PURSUANT TO  
CHAPTER 42F, HAWAII REVISIED STATUTES**

The undersigned authorized representative of the applicant certifies the following:

- 1) The applicant meets and will comply with all of the following standards for the award of grants and subsidies pursuant to Section 42F-103, Hawaii Revised Statutes:
  - a) Is licensed or accredited, in accordance with federal, state, or county statutes, rules, or ordinances, to conduct the activities or provide the services for which a grant or subsidy is awarded;
  - b) Complies with all applicable federal and state laws prohibiting discrimination against any person on the basis of race, color, national origin, religion, creed, sex, age, sexual orientation, or disability;
  - c) Agrees not to use state funds for entertainment or lobbying activities; and
  - d) Allows the state agency to which funds for the grant or subsidy were appropriated for expenditure, legislative committees and their staff, and the auditor full access to their records, reports, files, and other related documents and information for purposes of monitoring, measuring the effectiveness, and ensuring the proper expenditure of the grant or subsidy.
- 2) The applicant meets the following requirements pursuant to Section 42F-103, Hawaii Revised Statutes:
  - a) Is incorporated under the laws of the State; and
  - b) Has bylaws or policies that describe the manner in which the activities or services for which a grant or subsidy is awarded shall be conducted or provided.
- 3) If the applicant is a non-profit organization, it meets the following requirements pursuant to Section 42F-103, Hawaii Revised Statutes:
  - a) Is determined and designated to be a non-profit organization by the Internal Revenue Service; and
  - b) Has a governing board whose members have no material conflict of interest and serve without compensation.

Pursuant to Section 42F-103, Hawaii Revised Statutes, for grants or subsidies used for the acquisition of land, when the organization discontinues the activities or services on the land acquired for which the grant or subsidy was awarded and disposes of the land in fee simple or by lease, the organization shall negotiate with the expending agency for a lump sum or installment repayment to the State of the amount of the grant or subsidy used for the acquisition of the land.

Further, the undersigned authorized representative certifies that this statement is true and correct to the best of the applicant's knowledge.

YMCA of Honolulu

(Typed Name of Individual or Organization)

01/31/2013

(Date)

Michael J. Doss, Executive Vice President & COO

(Typed Name)

(Title)