

House District 44/45
Senate District 21

**THE TWENTY-SEVENTH LEGISLATURE
APPLICATION FOR GRANTS & SUBSIDIES
CHAPTER 42F, HAWAII REVISED STATUTES**

Log No:

For Legislature's Use Only

Type of Grant or Subsidy Request:

- GRANT REQUEST – OPERATING GRANT REQUEST – CAPITAL SUBSIDY REQUEST

"Grant" means an award of state funds by the legislature, by an appropriation to a specified recipient, to support the activities of the recipient and permit the community to benefit from those activities.

"Subsidy" means an award of state funds by the legislature, by an appropriation to a recipient specified in the appropriation, to reduce the costs incurred by the organization or individual in providing a service available to some or all members of the public.

"Recipient" means any organization or person receiving a grant or subsidy.

STATE DEPARTMENT OR AGENCY RELATED TO THIS REQUEST (LEAVE BLANK IF UNKNOWN):

STATE PROGRAM I.D. NO. (LEAVE BLANK IF UNKNOWN):

1. APPLICANT INFORMATION:

Legal Name of Requesting Organization or Individual:
Db: Waianae Coast Comprehensive Health Center
Street Address: 86-260 Farrington Highway
Mailing Address: 86-260 Farrington Highway
Waianae, Hawaii 96792

2. CONTACT PERSON FOR MATTERS INVOLVING THIS APPLICATION:

Name RICHARD P. BETTINI, MPH, MS
Title President and Chief Executive Officer
Phone # 808-697-3457
Fax # 808-697-3687
e-mail wcchc@wcchc.com

3. TYPE OF BUSINESS ENTITY:

- NON PROFIT CORPORATION
 FOR PROFIT CORPORATION
 LIMITED LIABILITY COMPANY
 SOLE PROPRIETORSHIP/INDIVIDUAL

6. DESCRIPTIVE TITLE OF APPLICANT'S REQUEST:

EMERGENCY MEDICAL SERVICES BUILDING

4. FEDERAL TAX ID #: [REDACTED]
5. STATE TAX ID #: [REDACTED]

7. AMOUNT OF STATE FUNDS REQUESTED:

FISCAL YEAR 2014: \$ 3,000,000

8. STATUS OF SERVICE DESCRIBED IN THIS REQUEST:

- NEW SERVICE (PRESENTLY DOES NOT EXIST)
 EXISTING SERVICE (PRESENTLY IN OPERATION)

SPECIFY THE AMOUNT BY SOURCES OF FUNDS AVAILABLE AT THE TIME OF THIS REQUEST:

STATE \$ 5,750,000
FEDERAL \$ _____
COUNTY \$ _____
PRIVATE/OTHER \$ 600,000

[REDACTED]

RICHARD P. BETTINI, PRESIDENT & CHIEF EXECUTIVE OFFICER
NAME & TITLE

1/30/2013
DATE SIGNED

**APPLICATION FOR GRANTS AND SUBSIDIES
GRANT REQUEST - CAPITAL**

EMERGENCY MEDICAL SERVICES BUILDING

Summary of Request

The Waianae Coast Comprehensive Health Center is requesting \$3,000,000 in State capital improvement project (CIP) funding for construction costs related to building the Health Center's new emergency medical services building to ensure its capability to serve the emergency medical and disaster preparedness needs, including capacity to address crisis behavioral health needs, for the Waianae Coast and surrounding communities in Leeward Oahu.

The Health Center's 24-hour emergency and radiology department has reached its capacity and its design is no longer adequate for the specialized needs of the more than 18,600 annual emergency room patient visits.

The **total cost of the project is \$12,187,696**, of which the Health Center is **requesting \$3,000,000** from the Legislature for FY 2013/2014. The request for \$3,000,000 is in addition to the \$3,750,000 that the Legislature approved in FY 2006/2007 and the \$2,000,000 approved in FY 2012-2013 for the emergency department capital project. An additional \$600,000 has been secured from private sources and the balance of \$2,837,696 is being sought from other private sources.

The construction will focus on rebuilding and creating expanded and more efficient space for the emergency department, radiology department and Imi Koke (urgent care) Clinic with capacity to address crisis situations for behavioral health patients accessing emergency services.

Since the initial request to the Legislature in 2006 when CIP funding was first approved, the Health Center has re-evaluated its needs based on patient growth and access, in response to a request from the Director of Health to address emergency crisis intervention medical services for behavioral health patients, and the rise in construction costs. Consequently, the initial one story building planned in 2006 is not adequate to meet the expanded and future needs of residents and it is prudent and necessary to increase the size of the building by adding a second story.

I. Background and Summary

Applicant's Background

The Waianae Coast Comprehensive Health Center serves the medically underserved community on the Waianae Coast, its primary service area, and the surrounding communities of Kapolei, Ewa and Waipahu.

Serving the community since 1972, the Health Center celebrated its 40th anniversary in 2012. From its start as a one doctor office, the Health Center is the largest, and oldest, of the fourteen community health centers in the State of Hawaii. The strength of the Health Center lies in the strong foundation set by its founders, the vision and expertise of its Board of Directors, the sense of ownership by its staff, patients and community, the years of service and commitment of its management team, and the relationships forged at the community, state and national level.

In 2011, the Health Center served 29,724 patients, the majority being Native Hawaiian (52%), followed by Asian & other Pacific Islanders (26%), and Caucasians (15%). Data shows 68% of patients are at 100% of the federal poverty level or below, 12% are uninsured, and 57% are receiving coverage under QUEST, the State Medicaid program.

The Waianae Coast is an economically distressed community with a population of 48,519 ranking lowest in the State for per capita income, and highest in the State for number of households receiving public assistance, number of obese adults, adults with diabetes, cancer mortality and diseases of the heart. The Waianae Coast ranks second highest in the State for infant mortality. Compared to the rest of Oahu, the Waianae Coast ranks highest in unemployment, and uninsured adults, and second highest for individuals being admitted to the hospital with a schizophrenia diagnosis.

The Health Center's mission just begins to tell our story: "The Waianae Coast Comprehensive Health Center is a healing center that provides accessible and affordable medical and traditional healing services with aloha. The Health Center is a learning center that offers health career training to ensure a better future for our community. The Health Center is also an innovator, using leading edge technology to deliver the highest quality of health care services."

The Health Center achieves its mission by not only serving patients who seek services, but also by incorporating the goal of improving the overall health status of the community it serves.

Programs/services have been designed around an integrated model of care in which the Health Center serves as a patient's health care home.

The vision of the founders of the Health Center, to offer comprehensive health services, has guided the development of services and activities provided today, which include:

Primary care provided through five clinic sites in Waianae, Nanakuli, Kapolei and Waipahu (family practice, pediatrics, women's health, adult medicine and internal medicine); Emergency care (24 hrs); Laboratory (24 hrs); Radiology (24 hrs); Specialty care (General Surgery, Ophthalmology, Obstetrics/Gynecology, Orthopedics, Perinatology, Podiatry, Psychiatry, Psychology, Dermatology, and Chronic Pain Management); Dental in Waianae and Kapolei; Pharmacy in Waianae and Kapolei; Preventive health/health education; Medical Nutrition Therapy; WIC; Case management; Homeless Outreach; Chronic disease management; Native Hawaiian

Traditional Healing; Integrative/Alternative medicine; Lifestyle enhancement; Adult day care at 4 sites; Behavioral health (mental health and substance abuse treatment); Transportation; Health career training; Health professional training; and Healthy Dining Restaurant services.

The Health Center has operated an emergency room at its main site since 1976 and has provided 24-hour emergency services since 1986.

Along with 24-hour emergency medical services, laboratory, radiology, security and housekeeping services are also provided around the clock, 365 days a year. Physicians, physician assistants, registered nurses, licensed practical nurses, emergency room technicians, and laboratory and radiology technicians provide services for patients, while medical receptionists provide not only intake but support uninsured patients in securing medical coverage under QUEST/Medicaid. Imi Koke, a walk-in urgent care clinic is staffed by nurse practitioners/physician assistants and operates Monday – Saturday from 8:00 am – 8:00 pm. With the expansion to address crisis intervention for behavioral health patients accessing the emergency room, staffing will now include behavioral health specialists.

The emergency room is one of the most heavily utilized on Oahu. For the period July 1, 2011 – June 30, 2012, 11,550 patients were seen in the emergency room through a total of 18,602 visits. This includes 2,530 patients who made a total of 2,989 visits during the hours of midnight to 8:00 a.m.

Of the total number of visits, 62% were visits by patients covered under QUEST/Medicaid and 8% of visits were by uninsured patients. Trauma, chest pain, congestive heart failure, respiratory distress, labor, mental illness and substance abuse, physical abuse and other severe signs/symptoms make up one-third of the visits to the emergency room.

Goals and Objectives Related to the Request

The intent of the Capital Improvement Project is to rebuild the emergency services department to ensure its capability to serve the emergency, urgent care, disaster-related, and crisis behavioral health intervention and medical needs of the Waianae Coast.

Public Purpose and Needs to be Served

The Waianae Coast is an economically distressed community with a population of 48,519. Based on the 2012 State of Hawaii Primary Care Needs Assessment Data Book, which compares primary care service areas throughout the state, the Waianae Coast ranks lowest in the State for per capita income, and highest in the State for number of households receiving public assistance, number of obese adults, adults with diabetes, cancer mortality, and diseases of the heart. The Waianae Coast ranks second highest in the State for infant mortality. Compared to the rest of Oahu, the

Waianae Coast ranks highest in unemployment, and uninsured adults, and second highest for individuals being admitted to the hospital with a schizophrenia diagnosis.

The Waianae region is very much removed from the urban core of Honolulu. Commute by car to services outside of the Waianae Coast can take more than an hour. Public transportation takes considerably longer. There is a single road that leads into and out of the Waianae Coast, making the area vulnerable in the event of a disaster. This characteristic of the Waianae region underscores the importance of a well-equipped emergency facility and access to immediate medical care in the event of a national emergency or disaster.

The need for an organization to provide 24-hour emergency medical services for the Leeward area has become even more essential with the recent closing of the emergency room at Hawaii Medical Center West and closing of hospital services at both Hawaii Medical Center East and West. The impact is not only the lack of any another emergency medical provider between the Waianae Coast and Pali Momi in Pearlridge or Kaiser in Moanalua, but also the longer wait, and island-wide impact, for a hospital bed for those in the emergency room who need to be admitted for hospital level care.

Aside from the 18,600 annual emergency room visits, tragic and crisis episodes, in particular those that close off access into and out of the Waianae Coast, there are the potential threats from natural disasters, breeches of homeland security, bioterrorism, and pandemics, that demonstrate how crucial a role the Health Center plays by having 24-hour emergency medical services available on the Waianae Coast.

There is increasing need for mental health services in emergency departments throughout the United States. This situation is the same in Hawaii, as expressed by Loretta Fuddy, Hawaii State Department of Health Director, in a meeting with our administration requesting that we build our services within the emergency room setting to address behavioral health crisis intervention.

The situation is that physicians in emergency departments are spending increasing amounts of time caring for people with mental illnesses. The reason for the increased utilization of emergency room visits by people with mental health and/or substance use issues is due to several reasons. There have been significant cuts to funding that supports primary, secondary, and tertiary prevention and intervention services. The consequences and impact of decreased funding to community-based psychiatric and social service programs are far-reaching, including increased crime rates, homelessness, substance abuse and dependence, and emergency room utilization. Individuals with psychiatric illnesses have higher rates of emergency room utilization than the general population. Medicaid beneficiaries account for a large proportion of this population. The result is overcrowded emergency rooms and delays in patients receiving appropriate treatment. Legislation and reinvestment is greatly needed to fund alternative crisis, case management, active community treatment, and prevention services. This is a timely and involved process. In the interim, mental health services in

the emergency department is becoming a necessity for ongoing assessment of mental health and/or substance use issues in patients.

The Health Center has a well developed mental health and substance abuse treatment program that will be able to support crisis intervention services within the emergency room.

The Health Center's participation and role in the statewide Emergency Medical System is substantial. We are connected to the Emergency Management computer, which connects all the hospitals and the EMS system, we have mass casualty/disaster gear issued to us through the Health Care Association, and we have a command structure in place to activate when needed.

The Honolulu Police Department and Child Protective Services also use the Emergency Room. The Honolulu Police Department brings individuals in custody to the emergency room for a medical assessment. Child Protective Services uses the emergency room for pre-placement physical exams when children are removed from their parents/guardians.

Target Population

Health Center patients, as well as the general community and visitors to the community, are able to access services through the emergency room. The emergency room is one of the most heavily utilized on Oahu. For the period July 1, 2011 – June 30, 2012, 11,550 patients were seen in the emergency room through a total of 18,602 visits. This includes 2,530 patients who made a total of 2,989 visits during the hours of midnight to 8:00 a.m.

Geographic Coverage

The majority of emergency room visits are made by Waianae Coast residents (88%) with 12% being patients who reside in Kapolei to Honolulu or who are tourists visiting the area.

II. Service Summary and Outcomes

Scope of Work, Tasks and Responsibilities

The Health Center's 24-hour emergency room and radiology room has reached its capacity and its design is no longer adequate for the specialized needs of the more than 18,000 annual emergency room patient visits.

The **total cost of the project is \$12,187,696**, of which the Health Center is **requesting \$3,000,000** from the Legislature for FY 2013/2014. The request for \$3,000,000 is in addition to the \$3,750,000 that the Legislature approved in FY 2006/2007 and the

\$2,000,000 approved in FY 2012-2013 for the emergency department capital project. An additional \$600,000 has been secured from private sources and the balance of \$2,837,696 is being sought from other private sources.

The construction will focus on rebuilding and creating expanded and more efficient space for the emergency department, radiology department and Imi Koke (urgent care) Clinic with capacity to address crisis situations for behavioral health patients accessing emergency services.

Since the initial request to the Legislature in 2006 when CIP funding was first approved, the Health Center has re-evaluated its needs based on patient growth and access, in response to a request from the Director of Health to address emergency crisis intervention medical services for behavioral health patients, and the rise in construction costs. Consequently, the initial one story building planned in 2006 is not adequate to meet the expanded and future needs of residents and it is prudent and necessary to increase the size of the building by adding a second story.

Projected Annual Timeline

PROJECT TIMELINE	STATUS	COMPLETION DATE
Approved SMA	DPP Review	February 2012
Secure Architectural Firm	Completed	June, 1, 2011
Planning and Design	On-going	March 31, 2013
Plan Drawings and Specifications	On-going	June 30, 2013
Bid Project	On-going	July 1, 2013
Award Bid/Contract Execution	On-going	August 31, 2013
Start Construction	On-going	September 2013
Complete Project	NA	September 2014

Quality Assurance and Evaluation Plans

The Health Center has not only taken part in statewide and national homeland security planning but has also conducted a thorough risk assessment on its own equipment and facilities to gauge its ability to respond to emergency and disaster events on the Waianae Coast. Several mechanisms to determine facility and equipment needs were used, such as internal facility and equipment inspections, and securing external expertise such as mechanical engineering surveys, architectural reviews, electrical energy audits, fire marshal site inspections, and civil engineering site inspections.

The Health Center’s assistant director in charge of facilities will work closely with the construction and engineering/architectural firms to ensure that capital building project meet city building code requirements, including federal ADA compliance. The assistant director, medical director and emergency room staff will oversee the implementation and operation of all emergency equipment and will work closely with other City and

State emergency departments to coordinate/plan for a systematic approach to responding to emergencies/disasters.

The Health Center has an active and robust quality improvement program. Quality and performance improvement activities of the Health Center represent an integrated multidisciplinary effort by all of its employees.

Medical providers, clinical and non-clinical management, mid-management, and program managers, are active in addressing quality management components at the Health Center through the following committees:

- Peer Review Committee
- Quality Improvement Committee
- Recruitment Committee
- Data Integrity Committee
- Family Practice Specialty Committee
- Pediatrician Specialty Committee
- Women's Health Committee
- HIPAA Committee
- Disaster Preparedness Committee
- Team Office Managers
- Health and Safety Committee
- Systems Committee
- Clinical Leadership Team
- Leadership Team

Improvement of the overall organization is addressed through the Quality Improvement Committee, the Data Integrity Committee, the Board of Directors, the Leadership Team and the Clinical Leadership Team.

Measures of Effectiveness

The measure of effectiveness will be the completion of construction of the emergency services building by September 2014.

III. Financial

Budget

See **Attachment A**, Budget Request By Source of Funds and Capital Project Details.

The Personnel Salaries and Wages and Budget Justification – Equipment and Motor Vehicles forms are not applicable to this request.

Anticipated Quarterly Funding Requests

For the period 2013 -2014, the Health Center anticipates funding requests as follows:

Quarter 1	Quarter 2	Quarter 3	Quarter 4
\$1,000,000	\$1,000,000	\$500,000	\$500,000

Other Sources of Funding Being Sought for FY 2013-14

The total cost of the project is \$12,187,696, of which the Health Center is requesting \$3,000,000 from the Legislature for FY 2013/2014. The request for \$3,000,000 is in addition to the \$3,750,000 that the Legislature approved in FY 2006/2007 and the \$2,000,000 approved in FY 2012-2013 for the emergency department capital project. An additional \$600,000 has been secured from private sources and the balance of \$2,837,696 is being sought from other private sources.

State and Federal Tax Credits

The Health Center has other several capital projects planned for the future to expand primary care services on the Waianae Coast and in Kapolei and Ewa. An application for New Market Tax Credits was recently submitted to help with those construction projects.

IV. Experience and Capability

A. Necessary Skills and Experience

The Health Center is a non-profit community health center that has served the community for 40 years. The growth of both the physical and program aspects of the Health Center over the past 40 years demonstrates the Health Center's experience and ability to plan and manage financial resources and capital development activities.

The Health Center has managed a number of large capital development projects over the years, including the building of a new lab and dental facility, a dining/restaurant facility and wellness center, a new 3-story medical building for women's health, pediatrics and training, a new substance abuse treatment services building, and numerous renovations and expansions of its facilities at its main center and satellite clinics. A two-story integrated adult medicine and pharmacy building is currently being built and will open in April.

Emergency services have been provided since 1976 and since 1986 have operated 24 hours, 365 days a year along with laboratory and radiology services.

The Health Center is the largest non-profit service provider in the state (Pacific Business News, January 2012), managing an annual budget of over \$40 million.

B. Facilities

The Health Center's 16-plus acre campus is situated on state and Hawaiian Home Land parcels centrally located on the Waianae Coast. Permanent structures have been constructed or renovated through funding support from the state and federal government, and private foundations. The Health Center's main upper campus is located on state land managed by the Department of Land and Natural Resources.

The upper campus houses primary care clinics, a specialty clinic, a 24-hour emergency room, a 24-hour radiology, a 24-hour laboratory, pharmacy, as well as a dental clinic, case management, outreach, a dining facility, Native Hawaiian healing, and administrative and information technology functions. Located at the lower campus of the main center are behavioral health and substance abuse treatment services, the Women, Infant and Children (WIC) program, nutrition and health education services, and health professional education. Satellite primary care clinics are located in the Nanakuli Shopping Center, the Waianae Mall, the FilCom Center in Waipahu, and in Kapolei. ADA guidelines are followed on all construction activities.

The emergency department is currently set-up with four exam rooms, a two-bed critical care room, and a minor surgery room that doubles as an emergency labor and delivery area. Severe trauma patients are stabilized through the Health Center's emergency room and transported to a hospital when a bed becomes available.

The emergency room is equipped with a neonatal warmer and neonatal heart monitor, as well as a child/adult heart monitor, defibrillator, pacer, IV infusers, and ventilator. The emergency room can provide, for example, much of the latest airway management supplies, neonatal resuscitation supplies, and the latest thrombolytics (clot busters) for use in patients having a heart attack. A new ultrasound is also available reducing the need for referrals to hospitals for such screening.

The rebuilding and consequent reconfiguration of the emergency department will be able to increase treatment and counseling rooms, increase triage and urgent care rooms, add trauma rooms for immediately life threatening illnesses and injuries, add and expand imaging/x-ray rooms and add rooms to support patients and/or family members experiencing a crisis situation.

Additional rooms are needed for short term stays to accommodate patients who, for example, are awaiting psychiatric or drug treatment beds at other facilities or who need to be monitored, such as for those having insulin-related or asthma-related problems. An isolation room is needed for individuals who present with a contagious condition. A birthing room is needed to accommodate emergency deliveries, many of which are teens and/or women who have not sought prenatal care. Many patients can be stabilized through the emergency room and sent home or stabilized enough that trauma care would not be needed if admitted to the hospital.

With the closing of Hawaii Medical Center East and West, many more patients are on “hold” at the Health Center’s ER while awaiting admission disposition. This includes patients awaiting hospital beds for Drug Treatment, Psychiatric Conditions, Cardiac (troponin) Observation, Acute Asthma and patients requiring Definitive Diagnostic Imaging (CT and MRI). Queen’s Medical Center is slated to re-open/operate the previous Hawaii Medical Center West in 2014.

V. Personnel: Project Organization and Staffing

A. Proposed Staffing, Staff Qualifications, Supervision and Training

Staffing is not applicable in this request.

B. Organization Chart

See **Attachment B** for organization-wide chart.

VI. Other

A. Litigation

None.

B. Licensure or Accreditation

Not applicable.

BUDGET REQUEST BY SOURCE OF FUNDS

(Period: July 1, 2013 to June 30, 2014)

Applicant: Waianae Coast Comprehensive Health Center

BUDGET CATEGORIES	Total State Funds Requested (a)	(b)	(c)	(d)
A. PERSONNEL COST				
1. Salaries				
2. Payroll Taxes & Assessments				
3. Fringe Benefits				
TOTAL PERSONNEL COST				
B. OTHER CURRENT EXPENSES				
1. Airfare, Inter-Island				
2. Insurance				
3. Lease/Rental of Equipment				
4. Lease/Rental of Space				
5. Staff Training				
6. Supplies				
7. Telecommunication				
8. Utilities				
9				
10				
11				
12				
13				
14				
15				
16				
17				
18				
19				
20				
TOTAL OTHER CURRENT EXPENSES				
C. EQUIPMENT PURCHASES				
D. MOTOR VEHICLE PURCHASES				
E. CAPITAL	3,000,000			
TOTAL (A+B+C+D+E)	3,000,000	0		
SOURCES OF FUNDING		Budget Prepared By:		
(a) Total State Funds Requested		James Chen	697-3461	
(b)		[REDACTED]		
(c)		Signature of Authorized Official		
(d)		Date		
TOTAL BUDGET		Richard P. Bettini, MPH, MS, President & Chief Executive Officer		
		Name and Title (Please type or print)		

BUDGET JUSTIFICATION PERSONNEL - SALARIES AND WAGES

Applicant: Waianae Coas Comprehensive Health Center

Period: July 1, 2013 to June 30, 2014

POSITION TITLE	FULL TIME EQUIVALENT	ANNUAL SALARY A	% OF TIME ALLOCATED TO GRANT REQUEST B	TOTAL STATE FUNDS REQUESTED (A x B)
Not Applicable				\$ -
				\$ -
				\$ -
				\$ -
				\$ -
				\$ -
				\$ -
				\$ -
				\$ -
				\$ -
				\$ -
				\$ -
				\$ -
				\$ -
				\$ -
				\$ -
TOTAL:				
JUSTIFICATION/COMMENTS:				

BUDGET JUSTIFICATION - EQUIPMENT AND MOTOR VEHICLES

Applicant: Waianae Coast Comprehensive Health Period: July 1, 2013 to June 30, 2014

DESCRIPTION EQUIPMENT	NO. OF ITEMS	COST PER ITEM	TOTAL COST	TOTAL BUDGETED
Not Applicable			\$ -	
			\$ -	
			\$ -	
			\$ -	
			\$ -	
TOTAL:				
JUSTIFICATION/COMMENTS:				

DESCRIPTION OF MOTOR VEHICLE	NO. OF VEHICLES	COST PER VEHICLE	TOTAL COST	TOTAL BUDGETED
Not Applicable			\$ -	
			\$ -	
			\$ -	
			\$ -	
			\$ -	
TOTAL:				
JUSTIFICATION/COMMENTS:				

BUDGET JUSTIFICATION CAPITAL PROJECT DETAILS

Applicant: Waianae Coast Comprehensive Hea

Period: July 1, 2013 to June 30, 2014

FUNDING AMOUNT REQUESTED						
TOTAL PROJECT COST	ALL SOURCES OF FUNDS RECEIVED IN PRIOR YEARS		STATE FUNDS REQUESTED	OTHER SOURCES OF FUNDS REQUESTED	FUNDING REQUIRED IN SUCCEEDING YEARS	
	FY: 2006-2007	FY: 2012-2013	FY:2013-2014	FY:2013-2014	FY:2014-2015	FY:2015-2016
PLANS					N/A	N/A
LAND ACQUISITION						
DESIGN (A&E; soft and hard costs)				787696		
CONSTRUCTION	3750000	2000000	3000000	1150000		
EQUIPMENT				1500000		
TOTAL:	3750000	2000000	3,000,000	3,437,696		
JUSTIFICATION/COMMENTS:						

**DECLARATION STATEMENT OF
APPLICANTS FOR GRANTS AND SUBSIDIES PURSUANT TO
CHAPTER 42F, HAWAII REVISIED STATUTES**

The undersigned authorized representative of the applicant certifies the following:

- 1) The applicant meets and will comply with all of the following standards for the award of grants and subsidies pursuant to Section 42F-103, Hawaii Revised Statutes:
 - a) Is licensed or accredited, in accordance with federal, state, or county statutes, rules, or ordinances, to conduct the activities or provide the services for which a grant or subsidy is awarded;
 - b) Complies with all applicable federal and state laws prohibiting discrimination against any person on the basis of race, color, national origin, religion, creed, sex, age, sexual orientation, or disability;
 - c) Agrees not to use state funds for entertainment or lobbying activities; and
 - d) Allows the state agency to which funds for the grant or subsidy were appropriated for expenditure, legislative committees and their staff, and the auditor full access to their records, reports, files, and other related documents and information for purposes of monitoring, measuring the effectiveness, and ensuring the proper expenditure of the grant or subsidy.
- 2) The applicant meets the following requirements pursuant to Section 42F-103, Hawaii Revised Statutes:
 - a) Is incorporated under the laws of the State; and
 - b) Has bylaws or policies that describe the manner in which the activities or services for which a grant or subsidy is awarded shall be conducted or provided.
- 3) If the applicant is a non-profit organization, it meets the following requirements pursuant to Section 42F-103, Hawaii Revised Statutes:
 - a) Is determined and designated to be a non-profit organization by the Internal Revenue Service; and
 - b) Has a governing board whose members have no material conflict of interest and serve without compensation.

Pursuant to Section 42F-103, Hawaii Revised Statutes, for grants or subsidies used for the acquisition of land, when the organization discontinues the activities or services on the land acquired for which the grant or subsidy was awarded and disposes of the land in fee simple or by lease, the organization shall negotiate with the expending agency for a lump sum or installment repayment to the State of the amount of the grant or subsidy used for the acquisition of the land.

Further, the undersigned authorized representative certifies that this statement is true and correct to the best of the applicant's knowledge.

Waianae Coast Comprehensive Health Center

(Typed Name of Individual or Organization)



(Signature)

January 30, 2013

(Date)

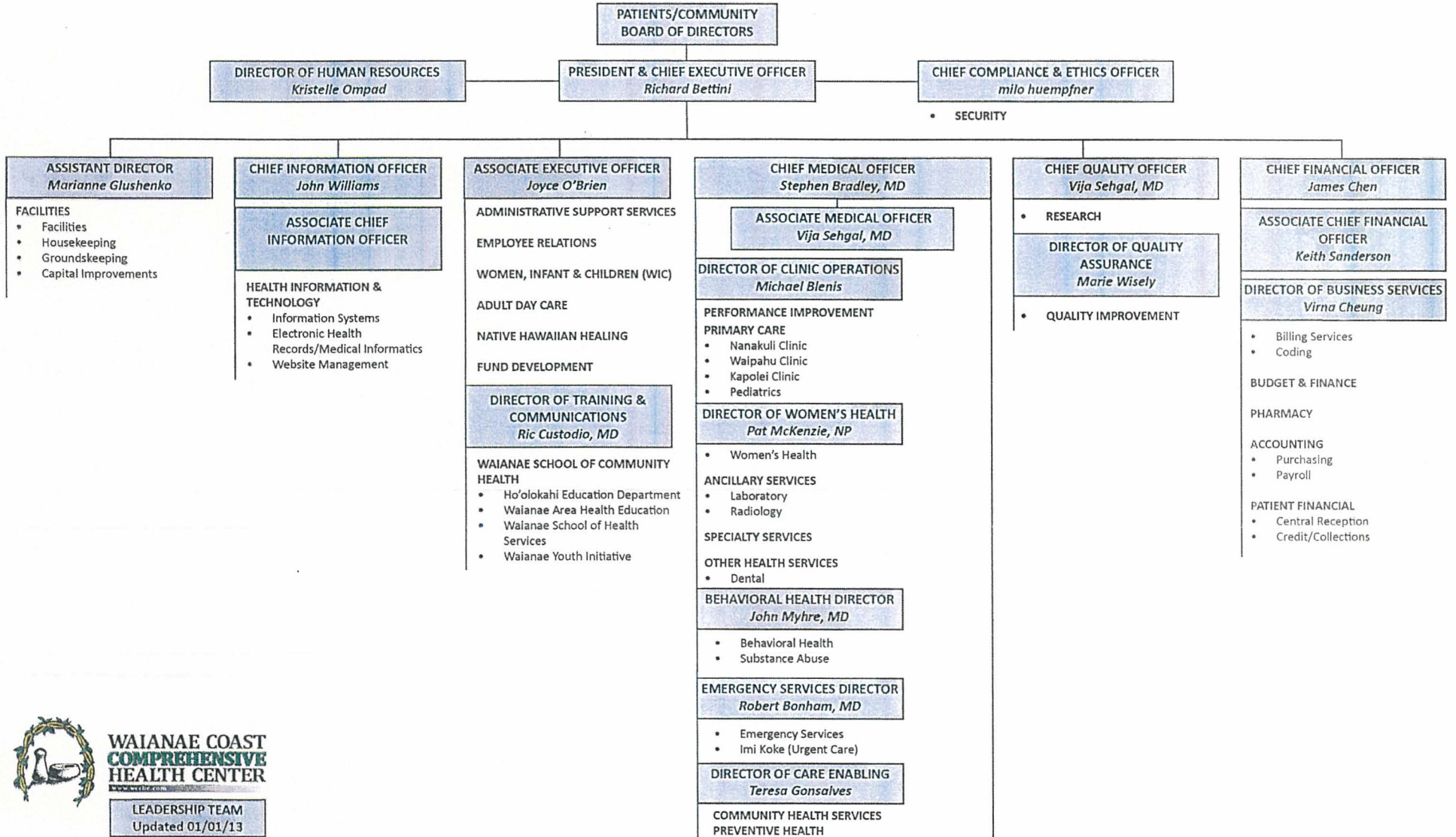
Richard P. Bettini, MPH, MS

(Typed Name)

President and Chief Executive Officer

(Title)

**WAIANAЕ COAST COMPREHENSIVE HEALTH CENTER
ORGANIZATIONAL CHART**



**WAIANAЕ COAST
COMPREHENSIVE
HEALTH CENTER**

LEADERSHIP TEAM
Updated 01/01/13