

House District _____

Senate District _____

THE TWENTY-SEVENTH LEGISLATURE
HAWAII STATE LEGISLATURE
APPLICATION FOR GRANTS & SUBSIDIES
CHAPTER 42F, HAWAII REVISED STATUTES

Log No: _____

For Legislature's Use Only

Type of Grant or Subsidy Request:

GRANT REQUEST – OPERATING

GRANT REQUEST – CAPITAL

SUBSIDY REQUEST

"Grant" means an award of state funds by the legislature, by an appropriation to a specified recipient, to support the activities of the recipient and permit the community to benefit from those activities.

"Subsidy" means an award of state funds by the legislature, by an appropriation to a recipient specified in the appropriation, to reduce the costs incurred by the organization or individual in providing a service available to some or all members of the public.

"Recipient" means any organization or person receiving a grant or subsidy.

STATE DEPARTMENT OR AGENCY RELATED TO THIS REQUEST (LEAVE BLANK IF UNKNOWN):

DEPARTMENT OF HUMAN SERVICES

STATE PROGRAM I.D. NO. (LEAVE BLANK IF UNKNOWN): _____

1. APPLICANT INFORMATION:

Legal Name of Requesting Organization or Individual:
Project Vision Hawaii

Db/a: Project Vision Hawaii

Street Address: 525 Wyllie Street, Honolulu, Hawaii 96817

Mailing Address: 525 Wyllie Street, Honolulu, HI 96817

2. CONTACT PERSON FOR MATTERS INVOLVING THIS APPLICATION:

Name DR. MARYELLEN MARKLEY

Title Director, Fund Development

Phone # 808-561-8096

Fax # 808-595-8182

e-mail memarkley1@me.com

3. TYPE OF BUSINESS ENTITY:

- NON PROFIT CORPORATION
- FOR PROFIT CORPORATION
- LIMITED LIABILITY COMPANY
- SOLE PROPRIETORSHIP/INDIVIDUAL

6. DESCRIPTIVE TITLE OF APPLICANT'S REQUEST:

PROJECT VISION HAWAII – BETTER VISION FOR HAWAII

4. FEDERAL TAX ID #: _____

5. STATE TAX ID #: _____

7. AMOUNT OF STATE FUNDS REQUESTED:

FY 2012-2013: \$ 68,000

8. STATUS OF SERVICE DESCRIBED IN THIS REQUEST:

- NEW SERVICE (PRESENTLY DOES NOT EXIST)
- EXISTING SERVICE (PRESENTLY IN OPERATION)

SPECIFY THE AMOUNT BY SOURCES OF FUNDS AVAILABLE AT THE TIME OF THIS REQUEST:

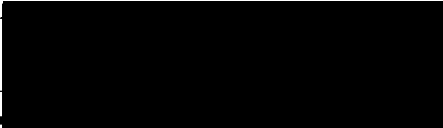
STATE \$ 0

FEDERAL \$ 0

COUNTY \$ 0

PRIVATE/OTHER \$ 200,450

TYPE NAME &



Elizabeth "Anne" Miller
EXECUTIVE DIRECTOR
NAME & TITLE

1/21/13
DATE SIGNED

Application for Grants and Subsidies

I. Background and Summary

1. A brief description of the applicant's background:

PROJECT VISION HAWAII is a non-profit 501(c)(3) public charity with a mission to enhance the quality of life by improving vision, preventing blindness, and advancing medical knowledge through community-based research.

In the last 5 years in our mobile screening unit, we have conducted vision and retinal screening in over 8000 people across the state of Hawaii triaging for disease, educating about proper follow up, and guiding people to care. ***We have found pathology as severe as a retinal tear and as benign as a cataract in one or both eyes of 40% of our participants.***

Collaborating with the Native Hawaiian Health Systems, Local Community Health Centers, Countless Providers, Homeless Resources Centers, Farmer's markets, the Lions Clubs and many other partners we have provided FREE vision services on Oahu, the Big Island, Maui, Lanai, Molokai and Kauai.

Services are provided free of charge, and we do not turn people away, but ***our focus is on those with a lack of access to care.*** We define this population by geographic access (those with transportation issues or in rural areas), informational access (language and cultural barriers), and financial access (lack insurance or means for care).

The standard services provided by PROJECT VISION HAWAII includes provision of educational material (much of which is culturally tailored), concerning systemic as well as eye disease, collection of demographic information and a brief HPI, a vision test, then a non-dilated fundus photo of the retinas. The information is then consolidated and evaluated by an eye doctor via store-and-report teleophthalmology and a letter is sent with findings and a recommendation for follow up.

For more serious conditions the participant is contacted directly to discuss the next steps in their care. It should also be noted that populations are approached on a case-by-case basis. For example, when we deal with a homeless population or a harder to track population it is necessary that we arrange for a physician provider to be onsite to ensure that screening results are addressed while the participant is within reach.

2. The goals and objectives related to the request;

In FY 2014, Project Vision Hawaii will be providing services at more than 60 locations statewide, through three major programs:

- (1) Better Vision for a Better Life Program which specifically serves homeless populations on Oahu, and will provide examinations, prescription and reading glasses, and protective sun glasses. Working with the Waikiki Health Center and the Institute for Human Services, we will conduct 12 events at these homeless shelters and resource centers. In these events, we will provide 300+ people in need with prescription eyeglasses.
- (2) We ... a hui for Health – a wellness screening program will continue to bring together thousands of people at more than 35 events working with more than 30 like-minded medical non-profits to provide free health screening and education services to communities across the state, particularly low-income or remote communities with access to care issues.
- (3) Keiki Screening Program – this program in Waianae includes a collaboration with the Learning Disabilities Association of Hawaii, Lions Club, and Read Aloud America, and provides vision, hearing and learning disability screenings for children ages 3-5 in low-income community pre-schools. We will conduct both a screening event for the children, and an 'ohana wellness events at 13 different preschools on the west coast of Oahu.

3. The public purpose and need to be served;

Hawaii has a large population of people who regularly experience access-to-care issues in getting adequate screening and medical care. These people are often elderly, children, disabled, living in remote rural areas, homeless, or very low-income. In some cases, their ability to access adequate health care is related to language barriers, immigration issues or cultural taboos. All too often, these patients do not get the medical care they require until they are profoundly or seriously ill, at which time, their health challenges are often much harder or impossible to solve. The cost of health care at this point in the game is almost always much, much higher than if those same patients had been screened and interventions performed earlier. For this reason, Project Vision Hawaii has developed a state-wide health screening program.

According to the Health Behavioral Risk Factor Surveillance System 15.5% of Hawaii's population is in poor health. In more rural areas like Waipahu on Oahu and Ka'u on the Big Island, this statistics rise to as high as 17.6 and 19.4% respectively. The irony of this lies in the fact that the areas with lower health statues are often the areas with Access to Care Issues. The Hawaii Health Data

Warehouse divides the issue of access into three categories: Availability, Affordability and Appropriateness.

Project Vision literally and figuratively provides a vehicle for health screening and promotion. We work to build community capacity in addressing these three issues of access to care with preventative health screenings, performed with our medical service providers in a collaboration called "WE ... a hui for Health". Some of the primary problem areas we address are listed below:

Mental Health: State statistics showed that only 58.3% of Hawaii's Population is of "good" mental health and 8.7% with mental distress. In collaboration with the MITSIG, "WE... a hui for health" provides one on one discussion of this issue, disseminating validated material for guidance to care for mental health issues.

Caregiving: State statistics report that only 13.5% rarely or never have adequate social and emotional support. Seniors and disabled adults in particular often do not have access to needed services either because existing programs are not provided in regionally accessible areas or because their financial circumstances make even modest charges prohibitive. The our partner the Caregiver Foundation engages our Wellness Event participants to change this fostering discussion, guiding people to resources, and working one on one with clients to ensure that family needs for the sandwich generation are met. We also work with SAGE Plus, and organization that provides materials on understanding Medicare.

Cardiovascular Health: 30.1% of Hawaii's population is reported as having high blood pressure, 17.6% are reported as having asthma, 2.8% as have Chronis Obstructive Pulmonary Disease and these numbers could be on the rise as 14.5% of Hawaii's population are reported as smokers. The COPD works with nurses, respiratory therapists and EMT to conduct lung function tests, blood pressure and counseling for smoking cessation for the many participants across the state who come to our wellness events. The American Lung Association also joins us for many of our events and educates participants about lung disease.

Liver: The Hepatitis Support Network of Hawaii focuses providing hepatitis screening, patient education and related medical case management testing and services to the at-risk populations.

Kidney: In Collaboration with the Kidney Foundation, Project Vision and "WE...a hui for health" disseminates Kidney Kits to our participants as well as educating them on the symptoms of kidney disease.

Cancer: According to the Hawaii Cancer Facts and Figures, there are 808 newly diagnosed cases of breast cancer per year in the state, with 7.9 % of people with cancer without any form of health insurance. Working with the Queen's Women's Network, we schedule mammograms for low-income women at

screening events. Project Vision has also graciously remodeled their bathroom, to retrofit an exam room. We are developing a program to work with volunteer providers to conduct onsite breast screenings and are seeking funding for this from the Susan G. Komen Foundation.

Diabetes: Over 100,000 people are thought to have diabetes, with an estimated 25% remaining undiagnosed. The impact of diabetes on vision is well known. Working with volunteer, pharmacists, medical, nursing and technical students, and other health care providers we provide glucose testing at our wellness events. Part of this grant in acquisition of an A1C hemoglobin meter so that the readings we take are more substantiated.

Vision: The 2004 Hawaii Diabetes Report estimated that there are between 12,000 to 24,000 new cases of blindness from diabetes each year, 90% of which would be preventable with annual follow up and treatment. Yet, only 62.4 % receive the recommended annual retina exam. PROJECT VISION HAWAII provides vision and retinal screening for our participants of the WE events finding not just diabetes but a number of other medical eye disease including glaucoma, macular degeneration, and more.

4. Describe the target population to be served;

Our target population includes Hawaii people who regularly experience access-to-care issues in getting adequate screening and medical care. These people are often elderly, children, disabled, living in remote rural areas, homeless, or very low-income. In some cases, their ability to access adequate health care is related to language barriers, immigration issues or cultural taboos.

5. Describe the geographic coverage

Project Vision Hawaii programs are provided statewide and on all islands (including Lanai), with priority given to low-income and rural communities with access-to-medical-care challenges.

II. Service Summary and Outcomes

1. Describe the scope of work, tasks and responsibilities;

In FY 2014, Project Vision Hawaii will continue the services it has provided since 2007, including vision screening, health and wellness community event coordination, and provision of services and eye corrective and protective glasses to those without means to purchase them when needed.

The three major programs we provide include:

- 1) Better Vision for a Better Life Program which specifically serves homeless populations on Oahu, providing examinations, prescription and reading glasses, sun glasses. This includes a collaboration with Waikiki Health Center and the Institute for Human Services. Last year 4500 people lost their Quest medical insurance, and access to quality health care was further limited. Project Vision Hawaii aims to serve this gap group as much as possible.
- 2) We ... a hui for Health – a wellness screening program that brings together more than 30 like-minded medical non-profits to provide free health screening and education services to communities across the state, particularly low-income or remote communities with access to care issues.
- 3) Keiki Screen Program – this program in Waianae includes a collaboration with the Learning Disabilities Association of Hawaii, Lions Club, and Read Aloud America, and provides vision, hearing and learning disability screenings for children ages 3-5 in low income community pre-schools.

Coordination and successful production of these programs involves significant volunteer coordination, logistical details such as shipping and maintaining the PV Bus, and hiring qualified bus drivers for each of the 60+ events we do every year.

All of this is accomplished with the support of a strong Board of Directors, caring physicians who donate services, and dedicated volunteers, including the Lions Clubs of Hawaii and many other health professionals who provide services at our events.

2. Provide a projected annual timeline for accomplishing the results or outcomes of the service;

See Attached

3. Describe the quality assurance and evaluation plans for the request. Specify how the application plans to monitor, evaluate and improve their results;

Since the majority of our funding comes through grants and other community donations, we must track funding, services provided, and demographic information very carefully, and are subject to service audit scrutiny.

All screening participants are interviewed for quality assurance during and/or after care is provided. Project Vision services are monitored and oversight is provided by a physician-populated advisory board.

Project Vision Hawaii has extensive policies in place and enforced to protect patient confidentiality, ensure adequate screening follow up for patients who need it, and guarantee that service providers are adequately trained, licensed and insured.

4. List the measure(s) of effectiveness that will be reported to the State agency through which grant funds are appropriated (the expending agency). The measure(s) will provide a standard and objective way for the State to assess the program's achievement or accomplishment. Please note that if the level of appropriation differs from the amount included in this application that the measure(s) of effectiveness will need to be updated and transmitted to the expending agency.

- At least 2,500 patients screened for vision abnormalities in FY2014
- 35 large-scale Wellness Screening events held state-wide with the support of our partners in the collaboration “WE ...a hui for Health”
- 12 Better Vision for a Better Life (a/k/a Homeless Glasses) events help in collaboration with IHS and the Waikiki Health Center
- 13 Keiki Screening events held at pre-schools throughout low income communities on West Oahu.

4) Financial

Budget

1. The applicant shall submit a budget utilizing the enclosed budget forms as applicable, to detail the cost of the request.

See attached

2. The applicant shall provide its anticipated quarterly funding requests for the fiscal year 2014.

Quarter 1	Quarter 2	Quarter 3	Quarter 4	Total Grant
\$20,000	\$16,000	\$16,000	\$16,000	\$68,000

3. The applicant shall provide a listing of all other sources of funding that they are seeking for fiscal year 2014:

Office of Hawaiian Affairs	\$24,000
Individual Donors	\$ 24,000
Freeman Foundation – HCF	\$ 20,000
Atherton Foundation	\$ 10,000
Allergan Pharmaceutical	\$10,000
Ohana Health Plan	\$30,000
First Hawaiian Bank Foundation	\$ 5,000
Friends of Hawaii Charities	\$ 7,000
WalMart	\$25,000
Disney	\$15,000
Kaiser Permanente Foundation	\$25,000
HMSA Foundation	<u>\$30,000</u>
Total	\$225,000

4. The applicant shall provide a listing of all state and federal tax credits it has been granted within the prior three years. Additionally, the applicant shall provide a listing of all state and federal tax credits they have applied for or anticipate applying for pertaining to any capital project, if applicable.

The applicant has received NO state or federal tax credits in the past three years, and does not anticipate receiving any such credits in the future.

5) Experience and Capability

A. Necessary Skills and Experience

We are the only mobile health screening unit in the State of Hawaii specifically providing services in communities state-wide which have significant access-to-care issues related to income, lack of insurance, geographical challenges, and cultural concerns. Since 2007, we have provided free and often advanced medical screening services to over 8,000 patients across the state, including a high population of seniors, children from low-income families, immigrants, and both children and adults with disabilities.

B. Facilities

The Project Vision Bus is a comprehensive mobile testing facility that travels around the state to all the event locations. Due to the structure of the bus, it is not completely ADA accessible. However, we have a written policy for and collaboration with physician service providers who do have ADA- compliant offices, and have agreed to provide duplicate services when needed for our disabled community at no charge.

6) Personnel: Project Organization and Staffing

A. Proposed Staffing, Staff Qualifications, Supervision and Training

Executive Director -

- Plan all Project Vision Events including logistical detail such as transportation of PV Bus to outer island locations
- Coordinate participation with all community partners in each screening location, IHS, Waikiki Health Center, or other partners within our “WE ...a hui for Health” group.
- Fund development activities including grant writing, public presentations, and personal interactions with private donors
- Recruitment and coordination of activities for over 500 community volunteers who support Project Vision Hawaii throughout the year.

Administrative Assistant / Community Coordinator -

- The Community Coordinator (CC) works one on one with the WE staff, partners and the public.
- The CC is responsible for being a good communicator with the ability to work with WE partners and staff, community leaders, and culturally diverse groups, and for positive communication and support between WE partners and participants.
- The community coordinator utilizes his/her writing skills to aid in preparation and submission of grants, press releases, and informative newsletters.
- The CC is responsible for emailing members, press release tasks, and event coordination to include actual event set-up and breakdown on all islands in the state of Hawaii.
- The CC is responsible for taking meeting minutes and disseminating minutes to partners and ensuring that WE staff and partners complete all meetings’ specific action items.

- The CC is responsible for updating members' list, mailing contact lists, and all calendars.

B. Organizational Chart

See attached

7) Other

A. Litigation

We have no outstanding litigation involvement, nor know of any threats of litigation.

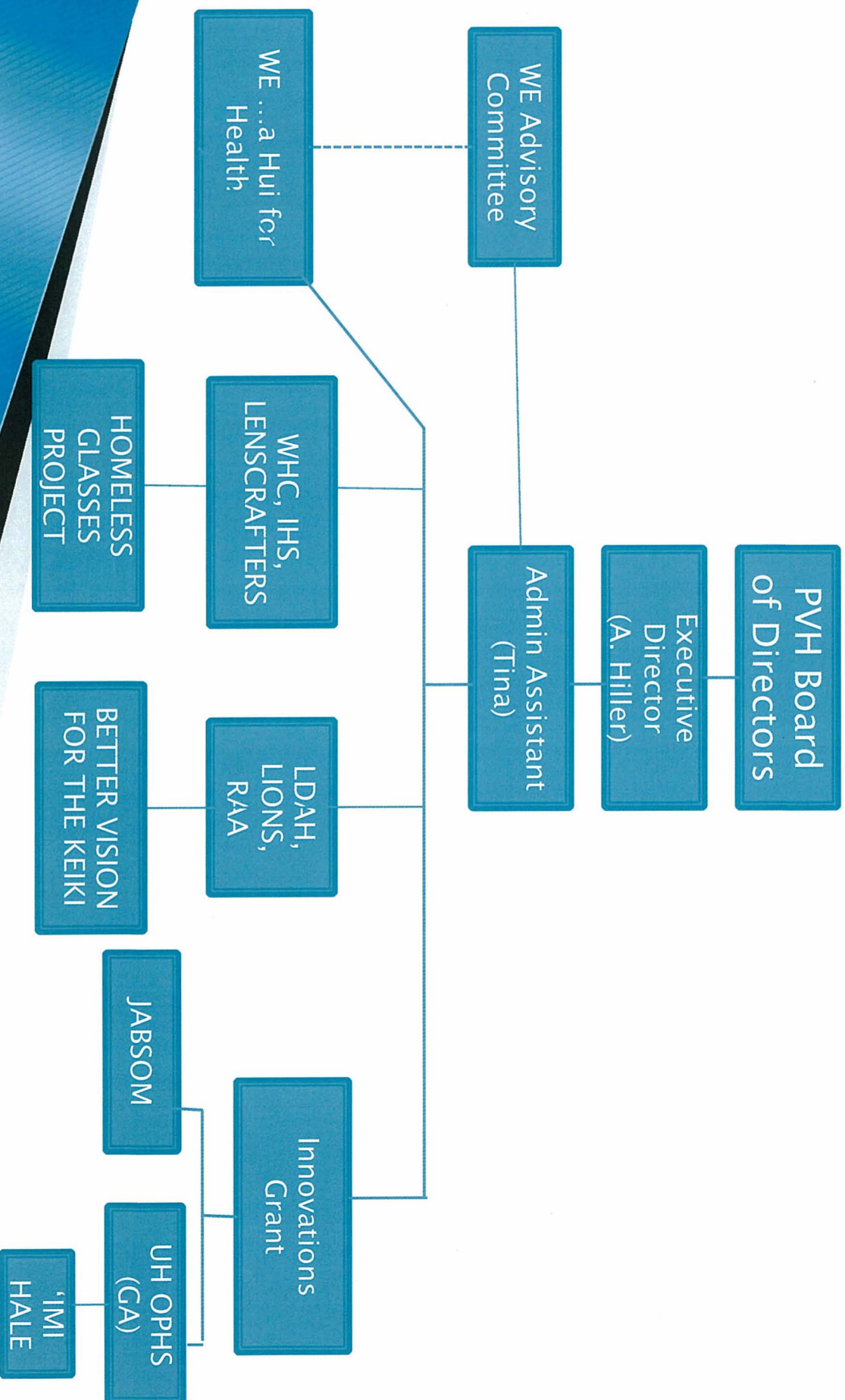
B. Licensure or Accreditation

Not applicable

PROJECTED TIMELINE FOR 2013

	July	August	September	October	November	December
WE...a hui for health. PROJECT VISION HAWAII as vehicle for coalition of screenings at 35+ events statewide.	2 Events to target Homeless populations in Kapolei and Mapunapuna	2 Community Built Events on the Island of Lanai, 1 community built event in Waimanalo.	10+ Community Events in the most rural and underserve areas on the Big Island	3 Community Events including Children and Youth Day at the Capital, Opening of the Wahiawa FQHC, and a Community Built Event in Wahiawa.	2 Oahu Events, on at KKV, one in Makaha	
Wai'anae Keiki Screening Project	1 Wai'anae Preschool Screening, 1 Wellness Event, 1 teacher/parent	1 Wai'anae Preschool Screening, 1 Wellness Event, 1 teacher/parent training	1 Wai'anae Preschool Screening, 1 Wellness Event	1 Wai'anae Preschool Screening, 1 Wellness Event	1 Wai'anae Preschool Screening, 1 Wellness Event	1 Wai'anae Preschool Screening, 1 Wellness Event.
Homeless Glasses Project	Event with Waikiki Care-A-Van	Event with IHS	Event with the Next Step Shelter	Event with Waikiki Care-A-Van	Event with Waikiki Care-A-Van	Event with Waikiki Care-A-Van
Island Innovation Grant	Pilot Test of Technology to improve access	Reporting on Research for Pilot Testing	Pilot Test of Innovations Technology Complete	Continued use of technology and development of tool for other WE agencies	Continued use of technology and development of tool for other WE agencies	Continued use of technology and development of tool for other WE agencies

PVH Org Chart



BUDGET REQUEST BY SOURCE OF FUNDS

(Period: July 1, 2013 to June 30, 2014)

App **Project Vision Hawaii**

BUDGET CATEGORIES	Total State Funds Requested (a)	Fee For Service Income (b)	Grants, Private & Corporate Donations (c)	(d)
A. PERSONNEL COST				
1. Salaries	38,000		92,000	
2. Payroll Taxes & Assessments	3,420		6,980	
3. Fringe Benefits	400		800	
TOTAL PERSONNEL COST	41,820		99,780	
B. OTHER CURRENT EXPENSES				
1. Travel Inter-Island	12,145	0	15,400	
2. Insurance	1,400	0	8,600	
3. Lease Motor Vehicles	0	0	750	
4. Lease/Rental of Space & Storage	0	0	3,000	
5. Staff Training	500	0	1,200	
6. Supplies - Office	1,500	0	1,340	
7. Telecommunication	960	0	1,450	
8. Audit	0	0	4,000	
9. Postage, Freight, Delivery	675	0	1,700	
10. Publication/Printing	1,500	1,500	890	
11. Repair/Maintenance	0	0	9,800	
12. Contractual Services (Administrative)	1,500	1,000	1,590	
13. Transportation (fuel)	0	0	4,000	
14. Program Supplies/Expenses	6,000	2,500	6,000	
15. Warfage Costs for Transporting Bus			7,500	
16				
17				
18				
19				
20				
TOTAL OTHER CURRENT EXPENSES	26,180		67,220	
C. EQUIPMENT PURCHASES				
D. MOTOR VEHICLE PURCHASES				
E. CAPITAL				
TOTAL (A+B+C+D+E)	68,000	5,000	167,000	
SOURCES OF FUNDING		Budget Prepared By:		
(a) Total State Funds Requested	68,000	Maryellen Markley, Ph.D. (808) 561-8096		
(b) Fee for Services	5,000	Phone		
(c) Grants, Private & Corp. Donations	167,000	Date		
(d)		1/31/13		
TOTAL BUDGET	240,000	<i>Elizabeth "Annie" Hiller</i> Name and Title (Please type or print)		

BUDGET JUSTIFICATION CAPITAL PROJECT DETAILS

Applicant: Project Vision Hawaii

Period: July 1, 2013 to June 30, 2014

FUNDING AMOUNT REQUESTED						
TOTAL PROJECT COST	ALL SOURCES OF FUNDS RECEIVED IN PRIOR YEARS		STATE FUNDS REQUESTED	OTHER SOURCES OF FUNDS REQUESTED	FUNDING REQUIRED IN SUCCEEDING YEARS	
	FY: 2011-2012	FY: 2012-2013	FY:2013-2014	FY:2013-2014	FY:2014-2015	FY:2015-2016
PLANS			N/A			
LAND ACQUISITION			N/A			
DESIGN			N/A			
CONSTRUCTION			N/A			
EQUIPMENT			N/A			
TOTAL:			N/A			
JUSTIFICATION/COMMENTS:						

**DECLARATION STATEMENT OF
APPLICANTS FOR GRANTS AND SUBSIDIES PURSUANT TO
CHAPTER 42F, HAWAII REVISIED STATUTES**

The undersigned authorized representative of the applicant certifies the following:

- 1) The applicant meets and will comply with all of the following standards for the award of grants and subsidies pursuant to Section 42F-103, Hawaii Revised Statutes:
 - a) Is licensed or accredited, in accordance with federal, state, or county statutes, rules, or ordinances, to conduct the activities or provide the services for which a grant or subsidy is awarded;
 - b) Complies with all applicable federal and state laws prohibiting discrimination against any person on the basis of race, color, national origin, religion, creed, sex, age, sexual orientation, or disability;
 - c) Agrees not to use state funds for entertainment or lobbying activities; and
 - d) Allows the state agency to which funds for the grant or subsidy were appropriated for expenditure, legislative committees and their staff, and the auditor full access to their records, reports, files, and other related documents and information for purposes of monitoring, measuring the effectiveness, and ensuring the proper expenditure of the grant or subsidy.
- 2) The applicant meets the following requirements pursuant to Section 42F-103, Hawaii Revised Statutes:
 - a) Is incorporated under the laws of the State; and
 - b) Has bylaws or policies that describe the manner in which the activities or services for which a grant or subsidy is awarded shall be conducted or provided.
- 3) If the applicant is a non-profit organization, it meets the following requirements pursuant to Section 42F-103, Hawaii Revised Statutes:
 - a) Is determined and designated to be a non-profit organization by the Internal Revenue Service; and
 - b) Has a governing board whose members have no material conflict of interest and serve without compensation.

Pursuant to Section 42F-103, Hawaii Revised Statutes, for grants or subsidies used for the acquisition of land, when the organization discontinues the activities or services on the land acquired for which the grant or subsidy was awarded and disposes of the land in fee simple or by lease, the organization shall negotiate with the expending agency for a lump sum or installment repayment to the State of the amount of the grant or subsidy used for the acquisition of the land.

Further, the undersigned authorized representative certifies that this statement is true and correct to the best of the applicant's knowledge.

Elizabeth (Annie) Hiller



Executive Director

(Date)

1/31/13