

House District 26

Senate District 13

THE TWENTY-SEVENTH LEGISLATURE
APPLICATION FOR GRANTS & SUBSIDIES
CHAPTER 42F, HAWAII REVISED STATUTES

Log No:

For Legislature's Use Only

Type of Grant or Subsidy Request:

GRANT REQUEST – OPERATING

GRANT REQUEST – CAPITAL

SUBSIDY REQUEST

"Grant" means an award of state funds by the legislature, by an appropriation to a specified recipient, to support the activities of the recipient and permit the community to benefit from those activities.

"Subsidy" means an award of state funds by the legislature, by an appropriation to a recipient specified in the appropriation, to reduce the costs incurred by the organization or individual in providing a service available to some or all members of the public.

"Recipient" means any organization or person receiving a grant or subsidy.

STATE DEPARTMENT OR AGENCY RELATED TO THIS REQUEST (LEAVE BLANK IF UNKNOWN):

STATE PROGRAM I.D. NO. (LEAVE BLANK IF UNKNOWN):

1. APPLICANT INFORMATION:

Legal Name of Requesting Organization or Individual:
Hawai'i Health Information Exchange

Dbas: Hawai'i HIE

Street Address: 900 Fort Street Mall 1305; Honolulu, HI 96813

Mailing Address: same

2. CONTACT PERSON FOR MATTERS INVOLVING THIS APPLICATION:

Name CHRISTINE SAKUDA

Title Executive Director

Phone # 808-441-1313

Fax # 808-441-1472

e-mail csakuda@hawaiihie.org

3. TYPE OF BUSINESS ENTITY:

- NON PROFIT CORPORATION
- FOR PROFIT CORPORATION
- LIMITED LIABILITY COMPANY
- SOLE PROPRIETORSHIP/INDIVIDUAL

6. DESCRIPTIVE TITLE OF APPLICANT'S REQUEST:

HAWAI'I STATE HEALTH INFORMATION EXCHANGE: SHARING MEANINGFUL INFORMATION BETWEEN PRIVATE AND PUBLIC HEALTH CARE PROVIDERS

4. FEDERAL TAX ID #: [REDACTED]

5. STATE TAX ID #: [REDACTED]

7. AMOUNT OF STATE FUNDS REQUESTED:

FISCAL YEAR 2014: \$ 1,000,000.00

8. STATUS OF SERVICE DESCRIBED IN THIS REQUEST:

- NEW SERVICE (PRESENTLY DOES NOT EXIST)
- EXISTING SERVICE (PRESENTLY IN OPERATION)

SPECIFY THE AMOUNT BY SOURCES OF FUNDS AVAILABLE AT THE TIME OF THIS REQUEST:

STATE \$1,000,000.00
 FEDERAL \$2,844,496.00
 COUNTY \$0
 PRIVATE/OTHER \$436,503.00

NAME & TITLE OF AUTHORIZED REPRESENTATIVE:

CHRISTINE SAKUDA, EXECUTIVE DIRECTOR

NAME & TITLE

1/30/2013

DATE SIGNED

Application for Grants and Subsidies

If any item is not applicable to the request, the applicant should enter "not applicable".

I. Background and Summary

This section shall clearly and concisely summarize and highlight the contents of the request in such a way as to provide the State Legislature with a broad understanding of the request. Include the following:

1. A brief description of the applicant's background;

Since 2006, the Hawai'i Health Information Exchange (Hawai'i HIE) has been committed to becoming the backbone for health information exchange among Hawai'i's health care providers through a safe and secure health information technology network.

When the Health Information Technology for Economic and Clinical Health (HITECH) Act was enacted in 2009, the Governor of the State of Hawai'i designated the Hawai'i HIE, a 501(c)(3) non-profit organization, as the State Designated Entity (SDE) to improve American health care delivery and patient care by implementing a statewide health information exchange in Hawai'i. The Hawai'i HIE has since received federal funding through the U.S. Department of Health & Human Services, Office of the National Coordinator for Health Information Technology (ONC) to develop and implement a statewide health information exchange network.

In February 2012, Governor Abercrombie reaffirmed the Administration's support of Hawai'i HIE as the SDE through a jointly signed Memorandum of Agreement.

The State HIE implementation activities support a private-public partnership between the Hawai'i HIE and the Hawai'i Health Information Technology Council (HHITC), formally the State Coordinating Committee for Health Information Technology, as chaired by the State Health IT Coordinator, Beth Giesting. The State Health IT Coordinator monitors and assists in the development and adoption of the State HIE Plan and also reviews ongoing plans before they are submitted to ONC.

The Hawai'i HIE's mission is to facilitate the exchange of health information and to enable quality health care statewide by providing reliable health information when and where it is needed.

In pursuit of this mission and all of its activities, Hawai'i HIE adheres to a set of guiding principles that include:

1. Be Inclusive
2. Commit to Quality
3. Create User Value
4. Be Transparent
5. Assure Privacy and Security
6. Be Sustainable
7. Assure Manageability
8. Adopt Relevant Rules and Standards
9. Use the Present to Achieve the Future

2. The goals and objectives related to the request;

In accordance with the above principles, Hawai'i HIE pursues the following goals:

1. Achieve the objectives established by ONC for each of its five specified domains of activity: governance, finance, technical infrastructure, business and technical operations, and legal/policy;
2. Ensure full statewide participation in all aspects of Hawai'i HIE plan with special attention given to ensuring participation by neighbor island communities;
3. Promote health information exchange through the creation and implementation of a stakeholder-centered governance process that organizes stakeholders in an effective manner, takes inventory of resources and needs of individual stakeholders, and provides effective coordination of programs;
4. Develop plans to build shared infrastructure (near term) that is sustainable (long term);
5. Assist eligible providers so they have connectivity and knowledge in order to become "meaningful users" of health information exchanges and receive financial payment incentives from Medicare and Medicaid;
6. Develop cooperative, synergistic relationships with relevant state agencies to enable maximum use of health care data at all levels, e.g. use of immunization and cancer registries;
7. Establish effective coordination leading to beneficial information exchange with all interested stakeholders;
8. Engage independent physicians on all levels of information exchange, providing technical education and assistance, especially through the cooperative efforts of the Hawai'i Pacific Regional Extension Center (HPREC);

9. Develop stakeholder agreements on data standards to be utilized at the state level. Ensure that standards and technical architecture are compatible with national standards as they are created;
10. Establish a privacy framework to guide the development of health information exchange such that consumers will have both knowledge of and confidence in the processes by which such information is exchanged; and
11. Emphasize the role of Hawai'i HIE in bringing improved health care to all the people of Hawai'i, especially in promoting the public interest as the SDE for health information exchange.

3. State the public purpose and need to be served;

Today, Hawai'i health care providers support over 30 different electronic health record systems, with a significant number of providers still remaining on a paper record system. This fragmentation in the market place fosters administrative and clinical inefficiencies that result in significant costs to the health care system.

The major goal of the Hawai'i HIE is to connect these disparate health care providers together to share clinical and administrative information meaningfully that will end up increasing efficiencies and decreasing costs to the state's health care delivery system.

In the most ideal case, requesting providers will be able to share Protected Health Information (PHI) with other providers outside of their business environments in order to coordinate care of the patient. Epic Electronic Medical Record (EMR) is currently utilized in six large hospital facilities: The Queen's Medical Center, Hawai'i Pacific Health's (HPH) Corporations (Straub Clinic and Hospital, Kapi'olani Medical Center, Wilcox Memorial Hospital, Pali Momi Medical Center), and Kaiser Permanente Hawai'i. Although each affiliated organization implemented their respective Electronic Health Record (EHR) systems independently, their individual networks demonstrate an example of how a coordinated care benefit can be realized.

Although a type of data exchange has already begun, the gap still exists for 70% of Hawai'i's health care organizations who are not able to share the Continuity of Care Document (CCD) outside of their walls. Each unaffiliated organization has privacy policies and business practices that restrict the sharing of electronic patient records which may result in services that can improve the patient's diagnosis. Hawai'i HIE is respectful of a business's bottom-line and proprietary data; however, in the spirit of maintaining the patient's health and decreasing duplicate services, it is imperative that collaboration with legal and financial departments occur. Although this is not a technical problem, the issue is identified as a gap that will need to be addressed as PHI is under the responsibility of each organization. Prudent policies that legally

bind CCDs to each organization will need to be considered in developing corresponding HIE internal policies that revolve around sharing of health information. Hawai'i HIE has joined the Western States Consortium (CA, OR, AK, NV, and AZ) to build interstate policies around sharing information outside of state lines. Hawai'i HIE is also establishing a strategy to meet gaps in HIE capabilities for the Center for Medicare and Medicaid Services (CMS) Meaningful Use requirements in order to gain a better understanding of how unaffiliated organizations can exchange patient information data. An ongoing collaboration with the Hawai'i Health Care Project, HHITC, HPREC and the Hawai'i Island Beacon Community will build on existing infrastructure and initiatives.

4. Describe the target population to be served; and

As mentioned, Hawai'i HIE also administers the Hawai'i Pacific Regional Extension Center's Cooperative Agreement, which assists Primary Care Physicians in reaching Meaningful Use (MU) measurements that demonstrate utilization of their EHR systems. As these physicians join the Hawai'i HIE, they will be able to send PHI electronically to improve coordinated health care. This has the potential of reaching out to every patient within the State of Hawai'i.

Coordination between Hawai'i Med-QUEST (Medicaid program) with the Hawai'i Department of Human Services (DHS) and Hawai'i HIE has already begun. Coordination will continue to take place in several areas, including governance, finance, and expansion of network services. An important element of this coordination will be the DHS access to Medicaid's claim and encounter information over the State HIE network to support Meaningful Use of Medicaid providers as early as 2013.

Hawai'i HIE is also communicating with payer organizations with Medicare plans to implement Patient Centered Medical Home programs that assist providers in receiving evolving financial incentives. The benefit is that by facilitating these payments, the physicians will continue to provide services to the elderly, disabled and those with targeted conditions, such as End-Stage Renal Disease. As this particular patient population utilizes multiple facilities, the electronic transfer of current health information is vital for their overall health through care coordination.

5. Describe the geographic coverage.

The Hawai'i HIE's goal is to create a meaningful and secure information technology network infrastructure for all health care providers with supporting governance and data sharing policies that support the entire patient population of the State of Hawai'i.

II. Service Summary and Outcomes

The Service Summary shall include a detailed discussion of the applicant's approach to the request. The applicant shall clearly and concisely specify the results, outcomes, and measures of effectiveness from this request.

1. Describe the scope of work, tasks and responsibilities;

Utilizing the existing operational infrastructure funded by the ONC, the Hawai'i HIE will continue to build on the established Cooperative Agreement and complete priority network connections to the State HIE grid by December 2013. This infrastructure will establish the connection to the current Department of Health (DOH) segregated program branches into a network of communication conduits that will allow the public health PHI to traverse to the appropriate DOH programs from priority private sector health care providers.

With trust already established by the community health care stakeholders, Hawai'i HIE already has data sharing agreements with several health care providers and the tasking will be to identify specific diagnosis codes to be flagged and directed to the appropriate DOH department. This process is highly complex and it is imperative that the technical mapping is accurate as batches of thousands of records are retrieved from numerous sources. Deconstructed identification must be processed so that accurate information is delivered to the appropriate destination. This delivery mechanism will allow specific departments to conduct their business process for public health reporting.

The Hawai'i HIE will be responsible for working with the State DOH in obtaining the provider agreements and data mapping fields to allow this process to work. Hawai'i HIE is already coordinating efforts with the Office of Information Management Technology (OIMT) in solidifying the blueprint for this effort and supports future data repository for on-going Public Health activities.

2. Provide a projected annual timeline for accomplishing the results or outcomes of the service;

As mentioned, Hawai'i HIE is already collaborating with OIMT to plan for DOH coordinated activities this fiscal year. The timeline, within the review of this GIA request, and one of the major Hawai'i HIE goals, is to establish an interface to the DOH Immunization Branch from two hospital facilities and a pharmacy chain. When current ONC grant funds are expended at the period of performance (Feb 2014), it is expected that additional hospital facilities (4) will have interfaces to the Hawai'i HIE with an added interface to the Syndromic Surveillance Program. By the end of FY 2014, we will also have completed an Emergency Medical Service (EMS) connection that will be able to track performance and high areas of utilization.

It is also expected during this GIA period that the Hawai'i HIE will develop an agreement to connect to another state HIE entity. Hawai'i HIE has been working with the Western States Consortium that is building policies and procedures for interstate connection. The Western States Consortium is recognized by the ONC as an organization to move interstate PHI in a safe, secure, and essential manner.

3. Describe its quality assurance and evaluation plans for the request. Specify how the applicant plans to monitor, evaluate, and improve their results; and

Since 2010, Hawai'i HIE has been managing two ONC stateside Cooperative Agreements and will continue to successfully adhere to all stringent federal financial and programmatic reporting requirements. A133 federal financial audits and ONC programmatic audits are conducted on a routine basis, and no major incidents have been reported. All audit reports are presented to the Hawai'i HIE Board of Directors, incorporated into the Board meeting minutes, and posted to our website, available for review.

As a part of the programmatic audit and included in our budget is a program evaluation. Currently, monitoring occurs with an annual budget audit that evaluates and suggests improvement on budget categories that are lined out within the following spreadsheets. Currently there are spending thresholds with varying layers of approvals required. Our Policies and Procedures are also on an annual review cycle that will examine processes that need to be updated as well as keeping a pulse on any upcoming legislation (federal and/or state) that may be on the horizon. Finally, there will be periodic auditing on access to the Hawai'i HIE. The Hawai'i HIE has hired a vendor that monitors for cyber-attacks, multiple log in attempts, audits for proper use and physical security protection. We will continue utilizing these safeguards through the duration of the GIA and have that available when requested.

4. List the measure(s) of effectiveness that will be reported to the State agency through which grant funds are appropriated (the expending agency). The measure(s) will provide a standard and objective way for the State to assess the program's achievement or accomplishment. Please note that if the level of appropriation differs from the amount included in this application that the measure(s) of effectiveness will need to be updated and transmitted to the expending agency.

The Hawai'i HIE will improve the quality of health care by having patient information available to the proper health care provider at the appropriate time of care. Our measurement of effectiveness can be based on operational connections with the agencies/organizations below and will be published on the www.hawaiihie.org website and reported to the appropriate agency:

1. Data on the connection feeds to the Hawai'i Immunization Registry;

2. Data on the connection feeds to the Hawai'i Syndromic Surveillance Branch;
3. Data on the connection feeds to the Hawai'i Tumor Registry;
4. Data on the connection feeds from the Hawai'i Laboratories to Epidemiology Branch, and;
5. Data on the connections from four Federally Qualified Health Centers and Hawai'i Health Systems Corporation.

III. Financial

Budget

1. The applicant shall submit a budget utilizing the enclosed budget forms as applicable, to detail the cost of the request.

See attached pages for budget forms.

2. The applicant shall provide its anticipated quarterly funding requests for the fiscal year 2014.

Quarter 1	Quarter 2	Quarter 3	Quarter 4	Total Grant
250,000	250,000	250,000	250,000	1,000,00

3. The applicant shall provide a listing of all other sources of funding that they are trying to obtain for fiscal year 2014.

Hawai'i HIE is obtaining additional funding from health care providers within the State of Hawai'i. This funding in the form of subscriptions is based on the number of beds at each hospital, the number of subscribing members within the Health Plans, and various levels of interoperability within smaller organizations.

Hawai'i HIE is also involved in other projects to subsidize operational costs that will provide fees for additional services such as the Med-QUEST SMHP currently under review by CMS.

4. The applicant shall provide a listing of all state and federal tax credits that have been granted within the prior three years. Additionally, the applicant shall provide a listing of all state and federal tax credits they have applied for or anticipate applying for pertaining to any capital project, if applicable.

Hawai'i HIE has not applied for state or federal tax credit.

IV. Experience and Capability

A. Necessary Skills and Experience

The applicant shall demonstrate that it has the necessary skills, abilities, knowledge of, and experience relating to the request. State your experience and appropriateness for providing the service proposed in this application. The applicant shall also provide a listing of verifiable experience of related projects or contracts for the most recent three years that are pertinent to the request.

Hawai'i health care providers recognized a need for health information exchange as early 2004 and supported an HIE pilot project called the Holomua Project, a Health IT Demonstration Grant funded from 2004-2007 through the U.S. Department of Health and Human Services, Agency for Health Care Research and Quality. With a vision of sharing meaningful health care data across the provider network in a safe and secure way, the Hawai'i HIE was incorporated in 2006 as a non-profit and received its 501(c)(3) status in 2010.

Many of the original stakeholders that helped found the Hawai'i HIE are represented on the Board today and set the strategic direction of the organization. Christine Sakuda, the current Executive Director of the Hawai'i HIE was one of the founding members of the Board of Directors and served as its President before becoming its first Executive Director. Deep experience in health care and technology extend beyond the Executive Director to all members of the Hawai'i HIE management team.

The Hawai'i HIE was awarded the ONC Cooperative Agreement from February 8, 2010 to February 7, 2014 in the amount of \$5,602,318. During this program Hawai'i HIE has been identified by the Grantee Recognition Program for reaching Milestone #1 in ePrescribing and Directed Exchange. The Grantee Recognition Program acknowledges grantee accomplishments in achieving State HIE programmatic goals that improve patient care and enable providers to achieve Meaningful Use.

In addition to this recognition, the HPREC has surpassed their Milestone 1 goal (525 providers) of registering 655 providers, and exceeded their Milestone 2 goals by 54 providers who have actively met the CMS Meaningful Use Stage One measures. The HPREC program was awarded \$6,620,000 by ONC.

Through its deep experience in health information technology, Hawai'i HIE has judiciously utilized on-going expenses of \$5,602,318 federal dollars and implemented key HIT services in accordance to its ONC Cooperative Agreement. Hawai'i HIE's field staff have effectively trained and enrolled over 500 users statewide on its HIT applications. Hawai'i HIE has also

developed privacy and operational policies governing the exchange of PHI by soliciting stakeholder input through in-kind time and contribution without receiving any state financial commitment as of this date.

Hawai'i HIE is ready to activate the data element exchange stage of the program where disparate data will be identified and directed to the proper recipient (under special and specific requirements) that will allow for public health reporting and health care analysis.

B. Facilities

The applicant shall provide a description of its facilities and demonstrate its adequacy in relation to the request. If facilities are not presently available, describe plans to secure facilities. The applicant shall also describe how the facilities meet ADA requirements, as applicable.

Hawai'i HIE is currently located at Pioneer Plaza, 900 Fort Street Mall, Suite 1305, Honolulu Hawai'i, 96813. ADA access is available at this facility.

The data center and computing facilities are hosted by the contracted HIE software vendor in Salt Lake City, UT and Boulder, CO. The data center and computing facilities are SAS-70 certified.

V. Personnel: Project Organization and Staffing

A. Proposed Staffing, Staff Qualifications, Supervision and Training

The applicant shall describe the proposed staffing pattern and proposed service capacity appropriate for the viability of the request. The applicant shall provide the qualifications and experience of personnel for the request and shall describe its ability to supervise, train and provide administrative direction relative to the request.

The following is a description of the State HIE budget and budget narrative, submitted to the Office of the National Coordinator for Health Information Technology as part of the Cooperative Agreement application process. The budget and budget narrative describe significant cost items, what is included in each cost item, and other factors which may influence the cost estimates used. A detailed proportional budget is included below in the following worksheet.

Staff

Executive Director: Oversees the entire program. Assumes at least a master's degree in public administration, business administration, information management or an equivalent degree or comparable work experience; with at least five years of experience in management associated with information technology, grants or

federal contracts, or related businesses. Coordinates communications with ONC, Hawai'i HIE Executive Committee, Board of Directors, and public and private stakeholders.

State HIE Project Director: Assumes at least a Master's degree in public administration, business administration, information management or an equivalent degree or comparable work experience; with at least 3 years of experience in management associated with information technology, grants or federal contracts, or related businesses. Manages the day-to-day ongoing operations and progress of the project to include workforce development, support with community colleges and universities, and implementation of the sustainability plan.

Executive Office Manager: Assumes a Bachelor's degree in business or an equivalent degree of comparable work experience; with at least 3 years of project coordination experience. Performs day-to-day administrative assistance and meeting coordination.

Communications and Outreach Specialist: Assumes a Bachelor's degree in business or communications or an equivalent degree of comparable work experience; with at least 3 years of communications related experience. Oversees the marketing plan, develops technical content for marketing material and fact sheets, presentations, testimony, website, etc., and provides input into the communication methodologies to interface with public and private providers.

IT Manager: Assumes bachelor's degree in information technology, information systems, computer engineering or an equivalent degree of comparable work experience; with at least 3 years of IT project development experience. Leads the coordination of the HIE technical infrastructure development, coordinates and develops plans for staying on time and on budget. Responsible for development of technical specifications, user requirements, technical design, network infrastructure, security protocols, equipment requirements, application capacities, and lifecycle timelines. IT director will also oversee privacy, security, data access and audit.

IT Interface Analyst: Assumes bachelor's degree in information technology or an equivalent degree of comparable work experience with at least 3 years of project IT architecture development experience. Responsible for basic HIE programming and maintenance of the HIE. Provides lead support to help providers develop system interfaces and is the primary lead to coordinate with vendors and develop standardized specifications.

Clinical Champion (3): Physician Champion with high level background in clinical informatics. Must be able to communicate with physicians, pharmacists, and other ancillary professions in the data transmission of clinical information to define and execute workflow methodologies.

Clinical Analyst (2): Assumes a Bachelor's degree in business, nursing or an equivalent degree of comparable work experience; with at least 3 years of implementation

and training and education experience. Responsible for coordinating user (physician-based) training, training and user guide documentation, clinic workflow schematic and business processes. Experienced in medical workflow design and implementing/using an EMR.

Meaningful Use Advocate: Assumes a Bachelor's degree in public administration, business, or an equivalent degree or comparable work experience; with at least 3 years of experience in Meaningful Use, CMS policy, grants or federal contracts, or related businesses. Responsible for ensuring that needed Meaningful Use information is gathered and disseminated to appropriate stakeholders and helps develop and execute strategies to accomplish this.

HPREC Project Director: Assumes at least a Master's degree in public administration, business administration, information management or an equivalent degree or comparable work experience; with at least 3 years of experience in management associated with information technology, grants or federal contracts, or related businesses. Manages the day-to-day ongoing operations of the HPREC program and progress of the project to include workforce development, support with community colleges and universities, and implementation of the sustainability plan.

HPREC Provider Consultants (3): Assumes a Bachelor's degree in public administration, business, or an equivalent degree or comparable work experience; with at least 3 years of experience in health care IT and with EHR applications within a clinical setting. Responsible for providing assistance to Primary Care Physicians (PCPs) and any other medical professional subscribing to the Hawai'i HIE to attest to Meaningful Use guidelines from CMS.

Finance Manager: Assumes a Bachelor's degree in finance, accounting, or an equivalent degree and comparable work experience; with at least 3 years of experience in financial management, accounting, and grants or federal contracts, or related businesses. Responsible for all fiscal operations and activities of the Hawai'i HIE; ensuring agency compliance with Generally Accepted Accounting Principles; development and monitoring of agency budgets: financial and management reporting, taxes, audit, internal controls, finance policy and procedures.

Pertinent Contracts

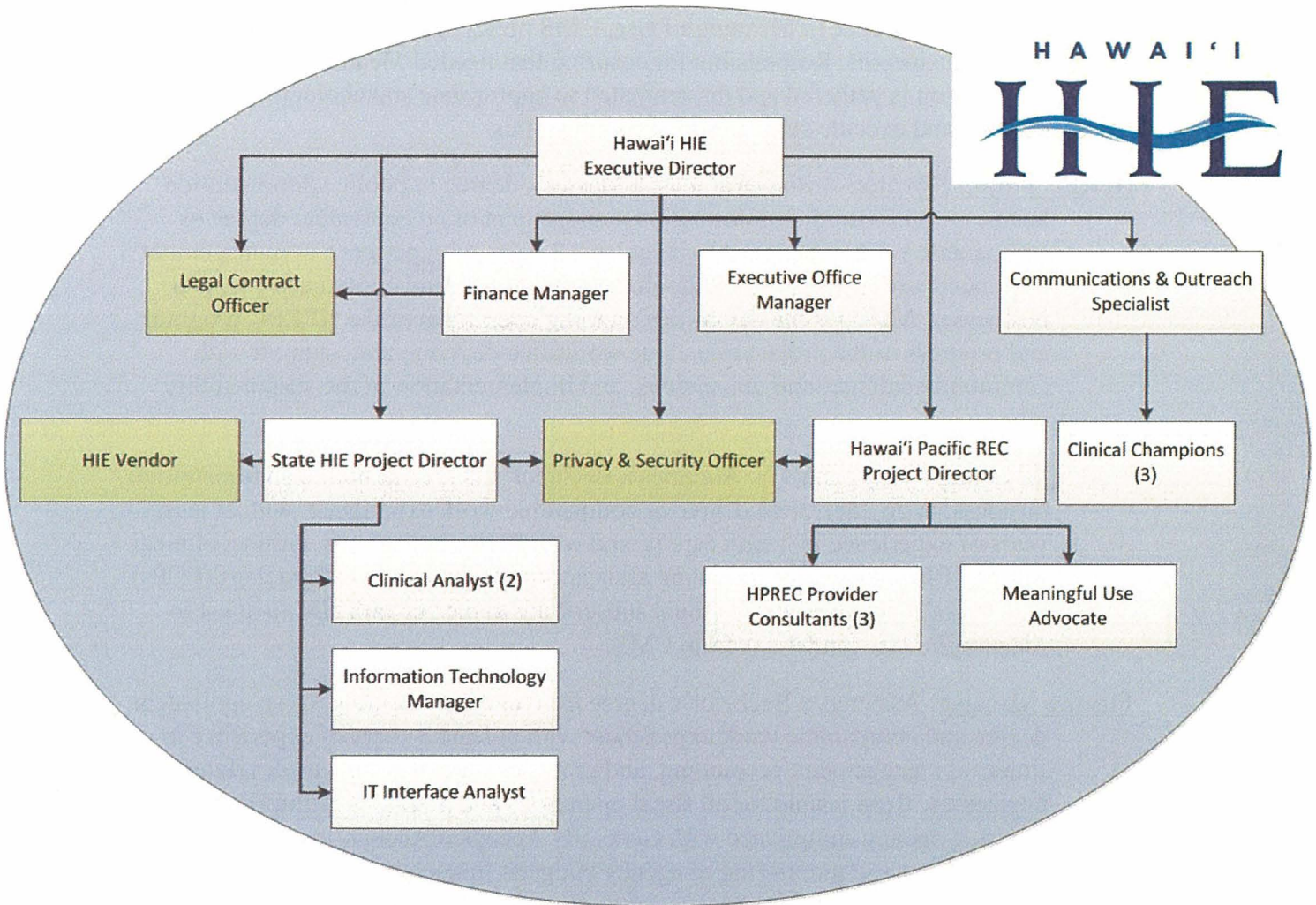
Privacy Security Officer: Contract services to provide oversight and mitigation in the event of any negative impacts revolved around security management and patient privacy rights.

Legal Contracts Officer: To provide legal advice on matters of legislative actions, HIPAA guidance, policies and procedures, and contract agreements.

HIE Vendor: IT Vendor that will be providing hosting services, data management, security protection, audit reporting and integration planning, implementation and maintenance.

B. Organization Chart

The applicant shall illustrate the position of each staff and line of responsibility/supervision. If the request is part of a large, multi-purpose organization, include an organizational chart that illustrates the placement of this request.



VI. Other

A. Litigation

The applicant shall disclose any pending litigation to which they are a party, including the disclosure of any outstanding judgment. If applicable, please explain.

The applicant has no pending litigation at this time.

B. Licensure or Accreditation

The applicant shall specify any special qualifications, including but not limited to licensure or accreditation that applicant possesses relevant to this request.

The Hawai'i HIE signed a Memorandum of Agreement with the Governor on February 14, 2012 affirming its role as the State Designated Entity (SDE) for Hawai'i. When the national ruling occurs, the Hawai'i HIE is best positioned to be licensed as a certified health information exchange service provider to exchange personal health information within the state, across state lines, and into the Pacific Territories.

BUDGET REQUEST BY SOURCE OF FUNDS
(Period: July 1, 2013 to June 30, 2014)

Applicant: Hawai'i Health Information Exchange

BUDGET CATEGORIES	Total State Funds	Total Federal Funds	Total Private Funds	(d)
	(a)	(b)	(c)	
A. PERSONNEL COST				
1. Salaries	326,307	1,142,076	163,154	
2. Payroll Taxes & Assessments	65,261	228,415	32,631	
3. Fringe Benefits	48,946	171,311	24,473	
TOTAL PERSONNEL COST	440,515	1,541,803	220,258	
B. OTHER CURRENT EXPENSES				
1. Airfare, Inter-Island	8,488	14,204	2,358	
2. Insurance	41,077	68,736	11,410	
3. Lease/Rental of Equipment	16,950	28,364	4,708	
4. Lease/Rental of Space	0	0	0	
5. Staff Training	4,108	6,874	1,141	
6. Supplies	4,495	7,522	1,249	
7. Telecommunication	0	0	0	
8. Utilities	0	0	0	
9. Audit & Accounting Fees	6,846	11,456	1,902	
10. Legal	82,153	137,472	22,820	
11. Direct Technical Assistance to Hawaii Providers	27,384	45,824	7,607	
12. Direct Technical Assistance to Critical Access Hospitals	41,077	68,736	11,410	
13. Project Consultant - REC	12,699	21,251	3,528	
14. Clinical Champion	9,582	16,035	2,662	
15. Advertising/Marketing/Outreach	14,511	24,282	4,031	
16. Website Development & Hosting	3,026	5,064	841	
17. Software Hosting	61,615	103,104	17,115	
18. Contract Services	225,473	568,725	94,408	
19. Other General & Administrative Expenses	0	175,044	29,057	
TOTAL OTHER CURRENT EXPENSES	559,485	1,302,694	216,246	
C. EQUIPMENT PURCHASES				
D. MOTOR VEHICLE PURCHASES				
E. CAPITAL				
TOTAL (A+B+C+D+E)	1,000,000	2,844,496	436,503	
SOURCES OF FUNDING		Budget Prepared By:		
(a) Total State Funds Requested	1,000,000	TORRES W. GUTIERREZ		
(b) Total Federal Funds	2,844,496	[REDACTED]		
(c) Total Private Funds	436,503	[REDACTED]		
(d)		Signature of Authorized Official Date		
TOTAL BUDGET	4,281,000	FIN. MANAGER Name and Title (Please type or print)		

BUDGET JUSTIFICATION
PERSONNEL - SALARIES AND WAGES

Applicant: Hawai'i Health Information Exchange				
Period: July 1, 2013 to June 30, 2014				
POSITION TITLE	FULL TIME EQUIVALENT	ANNUAL SALARY A	% OF TIME ALLOCATED TO GRANT REQUEST	TOTAL STATE FUNDS REQUESTED (A x B)
			B	
Executive Director	1	144,285	25%	\$ 36,071.25
Exec. Office Manager	1	47,133	25%	\$ 11,783.25
Communication & Marketing Manager	1	50,838	25%	\$ 12,709.50
HIE Project Director	1	97,886	25%	\$ 24,471.58
Finance Manager	1	66,019	25%	\$ 16,504.78
IT Interface Analyst	1	77,863	25%	\$ 19,465.83
IT Director	1	93,176	25%	\$ 23,293.91
Clinical Analyst - I	1	78,507	25%	\$ 19,626.83
Clinical Analyst - II	1	63,000	25%	\$ 15,750.00
Privacy & Security Officer	1	66,019	25%	\$ 16,504.70
Contracts Officer	1	63,870	25%	\$ 15,967.45
Meaningful Use Advocate	1	61,385	25%	\$ 15,346.14
REC Project Director	1	60,854	25%	\$ 15,213.55
REC Provider Consultant - Maui	1	68,000	25%	\$ 17,000.00
REC Provider Consultant - Oahu	1	68,000	25%	\$ 17,000.00
REC Provider Consultant - Oahu	1	68,000	25%	\$ 17,000.00
Clinical Champions	1	60,000	25%	\$ 15,000.00
Legal Council	1	70,395	25%	\$ 17,598.68
TOTAL:				326,307
JUSTIFICATION/COMMENTS: Staff				

BUDGET JUSTIFICATION - EQUIPMENT AND MOTOR VEHICLES

Applicant: Hawai'i Health Information Exchange

Period: July 1, 2013 to June 30, 2014

DESCRIPTION EQUIPMENT	NO. OF ITEMS	COST PER ITEM	TOTAL COST	TOTAL BUDGETED
Not Applicable			\$ -	
			\$ -	
			\$ -	
			\$ -	
			\$ -	
TOTAL:			\$ -	0
JUSTIFICATION/COMMENTS:				

DESCRIPTION OF MOTOR VEHICLE	NO. OF VEHICLES	COST PER VEHICLE	TOTAL COST	TOTAL BUDGETED
Not Applicable			\$ -	
			\$ -	
			\$ -	
			\$ -	
			\$ -	
TOTAL:			\$ -	0
JUSTIFICATION/COMMENTS:				

BUDGET JUSTIFICATION CAPITAL PROJECT DETAILS

Applicant: Hawai'i Health Information Exchange

Period: July 1, 2013 to June 30, 2014

FUNDING AMOUNT REQUESTED						
TOTAL PROJECT COST	ALL SOURCES OF FUNDS RECEIVED IN PRIOR YEARS		STATE FUNDS REQUESTED	OF FUNDS REQUESTED	FUNDING REQUIRED IN SUCCEEDING YEARS	
	FY: 2011-2012	FY: 2012-2013	FY:2013-2014	FY:2013-2014	FY:2014-2015	FY:2015-2016
PLANS						
LAND ACQUISITION						
DESIGN						
CONSTRUCTION						
EQUIPMENT						
TOTAL:	0		0		0	
JUSTIFICATION/COMMENTS: Not Applicable						

**DECLARATION STATEMENT OF
APPLICANTS FOR GRANTS AND SUBSIDIES PURSUANT TO
CHAPTER 42F, HAWAI'I REVISED STATUTES**

The undersigned authorized representative of the applicant certifies the following:

- 1) The applicant meets and will comply with all of the following standards for the award of grants and subsidies pursuant to Section 42F-103, Hawai'i Revised Statutes:
 - a) Is licensed or accredited, in accordance with federal, state, or county statutes, rules, or ordinances, to conduct the activities or provide the services for which a grant or subsidy is awarded;
 - b) Complies with all applicable federal and state laws prohibiting discrimination against any person on the basis of race, color, national origin, religion, creed, sex, age, sexual orientation, or disability;
 - c) Agrees not to use state funds for entertainment or lobbying activities; and
 - d) Allows the state agency to which funds for the grant or subsidy were appropriated for expenditure, legislative committees and their staff, and the auditor full access to their records, reports, files, and other related documents and information for purposes of monitoring, measuring the effectiveness, and ensuring the proper expenditure of the grant or subsidy.
- 2) The applicant meets the following requirements pursuant to Section 42F-103, Hawai'i Revised Statutes:
 - a) Is incorporated under the laws of the State; and
 - b) Has bylaws or policies that describe the manner in which the activities or services for which a grant or subsidy is awarded shall be conducted or provided.
- 3) If the applicant is a non-profit organization, it meets the following requirements pursuant to Section 42F-103, Hawai'i Revised Statutes:
 - a) Is determined and designated to be a non-profit organization by the Internal Revenue Service; and
 - b) Has a governing board whose members have no material conflict of interest and serve without compensation.

Pursuant to Section 42F-103, Hawai'i Revised Statutes, for grants or subsidies used for the acquisition of land, when the organization discontinues the activities or services on the land acquired for which the grant or subsidy was awarded and disposes of the land in fee simple or by lease, the organization shall negotiate with the expending agency for a lump sum or installment repayment to the State of the amount of the grant or subsidy used for the acquisition of the land.

Further, the undersigned authorized representative certifies that this statement is true and correct to the best of the applicant's knowledge.

Hawai'i Health Information Exchange
(Typed Name of Individual or Organization)



(Signature)

1/30/2013

(Date)

Christine Sakuda
(Typed Name)

Executive Director
(Title)