

House District _____

Senate District _____

THE TWENTY-SIXTH LEGISLATURE
HAWAII STATE LEGISLATURE
APPLICATION FOR GRANTS & SUBSIDIES
CHAPTER 42F, HAWAII REVISED STATUTES

Log No:

For Legislature's Use Only

Type of Grant or Subsidy Request:

GRANT REQUEST – OPERATING

GRANT REQUEST – CAPITAL

SUBSIDY REQUEST

"Grant" means an award of state funds by the legislature, by an appropriation to a specified recipient, to support the activities of the recipient and permit the community to benefit from those activities.

"Subsidy" means an award of state funds by the legislature, by an appropriation to a recipient specified in the appropriation, to reduce the costs incurred by the organization or individual in providing a service available to some or all members of the public.

"Recipient" means any organization or person receiving a grant or subsidy.

STATE DEPARTMENT OR AGENCY RELATED TO THIS REQUEST (LEAVE BLANK IF UNKNOWN):

STATE PROGRAM I.D. NO. (LEAVE BLANK IF UNKNOWN): _____

1. APPLICANT INFORMATION:

Legal Name of Requesting Organization or Individual:

Hawai'i Alliance for Arts Education

Dbas: **Hawai'i Arts Alliance**

Street Address:

Mailing Address:

2. CONTACT PERSON FOR MATTERS INVOLVING THIS APPLICATION:

Name **MARILYN CRISTOFORI**

Title **Chief Executive Officer**

Phone # **533-2787**

Fax # **526-9040**

e-mail **arts@hawaiiartsalliance.org**

3. TYPE OF BUSINESS ENTITY:

- NON PROFIT CORPORATION
- FOR PROFIT CORPORATION
- LIMITED LIABILITY COMPANY
- SOLE PROPRIETORSHIP/INDIVIDUAL

6. DESCRIPTIVE TITLE OF APPLICANT'S REQUEST:

Leaders of the Arts First Partners (Act 306/01) initiate pilots for collaborative teaching of STEAM programs (Science, Technology, Engineering, Arts, Math). This will combine rigor and creativity in our education environment that can produce innovative thinkers for our future.

4. FEDERAL TAX ID #: _____

5. STATE TAX ID #: _____

7. AMOUNT OF STATE FUNDS REQUESTED:

FY 2013-2014: **\$ 460,000**

8. STATUS OF SERVICE DESCRIBED IN THIS REQUEST:

NEW SERVICE (PRESENTLY DOES NOT EXIST)

EXISTING SERVICE (PRESENTLY IN OPERATION)

SPECIFY THE AMOUNT BY SOURCES OF FUNDS AVAILABLE AT THE TIME OF THIS REQUEST:

STATE \$ _____

FEDERAL \$ PENDING

COUNTY \$ _____

PRIVATE/OTHER \$ PENDING

Marilyn Cristofori, Chief Executive Officer

NAME & TITLE

January 30, 2013

DATE SIGNED

Hawai'i Alliance for Arts Education
DBA Hawai'i Arts Alliance

Hawai'i State Legislature
Application for Grants and Subsidies
Chapter 42F, Hawai'i Revised Statutes

I. BACKGROUND and SUMMARY

1. Brief History of Applicant

Hawai'i Alliance for Arts Education DBA Hawai'i Arts Alliance respectfully requests a grant of \$500,000 for Fiscal Year 2013-2014 to support STEAM (Science, Technology, Engineering, Arts, and Math) learning for our children. Founded in 1980, the Arts Alliance is the statewide private, non-profit that represents all the arts while its members include the diverse, distinct arts and arts education disciplines. The mission of Hawai'i Arts Alliance embraces education, community and advocacy.

The Alliance is one of the six ARTS FIRST Partners¹ and works closely with the other Partners to attract outside funding and provide services that the other entities would otherwise be unable to offer. Over the past ten years, state funds were just over \$4.2 million, and the Alliance has been key to helping leverage those funds to attract more than \$13 million in federal and private funds. Among the ARTS FIRST (AF) accomplishments has been the creation of a standards-based, arts-integrated curriculum available to our public schools. Other substantial progress has been made in professional development for teachers, principals and artists, the development of qualified teaching artists, and technological access to the best practices in standards-based, arts-integrated curriculum linking the arts with other core academic subjects.

2. Goals and Objectives

State of Hawai'i support is vital to the continued impact of the arts as part of education reform and improvement for our state. The ARTS FIRST Strategic Plan FY 2013–2018, signed by all the Partners, is available upon request. The mission is to *work collaboratively to create conditions and culture that promise a comprehensive high-quality arts education – learning in, about and through the arts – for every student in Hawai'i*. There are four Goals in this Plan, and the following two are the focus of this request.

AF Goal 2. The Partners will conduct and disseminate research on the scope, impact and pertinent topics of arts education in Hawai'i.

AF Goal 3. Pre-service teachers, in-service teachers, and teaching artists have access to ongoing and high-quality professional learning opportunities.

¹ ACT 306/01 mandated the ARTS FIRST Partners to include: State Department of Education, Hawai'i Association of Independent Schools, University of Hawai'i at Manoa, College of Education, UHM College of Arts and Humanities, State Foundation on Culture and the Arts, and Hawai'i Arts Alliance. Two Affiliates are Maui Arts & Cultural Center and Honolulu Theatre for Youth.

Objectives for the next year July 1, 2013 to June 30, 2014 are:

- a. To recognize that curriculum in science, technology, engineering and math will be most effective when creativity is part of the learning. While it is currently a serious national discussion, Hawai'i needs to integrate creative learning into its education of STEM.
- b. To build on previous successes with integrated curricula, we will design and plan a pilot collaborative teaching/learning to include creative learning in a STEAM model for our schools, grades K – 8.
- c. To include evaluation in the model since it has been shown that evaluations are key to the success of attracting both public and private national support.

3. Public Purpose and Need

Significant national research² shows compelling evidence that arts education strongly impacts ALL learning, academic and social, irrespective of socio-economic status. Students in arts-rich schools earn better grades and scores, are less likely to leave school, watch less television, have a more positive self-concept and are more involved in community service. This research clearly demonstrates that arts education is evolving FROM an enhancement that can be eliminated without really hurting academic success TO understanding how the arts can form an integral conceptual underpinning for traditional academic learning and help students acquire long-term cognitive skills. Arts link cognitive growth to social, emotional and academic development and prepare students for work in an economy that will demand high-order skills. Eric Jensen, world-renowned educator/brain researcher maintains that arts are essential to the core curriculum of every school. Other researchers found that "those who study arts outperform 'arts-poor' students by virtually every measure: grades, test scores, attitudes and behavior irrespective of socioeconomic status." The following remark summarizes both public purpose and essential need.

*Arts are central to a civil society. Kids who create don't destroy. Arts education needs to be in the elementary and secondary schools through the core curriculum: in the home to foster lifelong learning; at the university level to develop excellence among future teachers and the future job force. We will all benefit from making the arts a core part of the educational system. Our future depends on it. We are moving very, very fast, and the future will be here before we know it.*³

² Champions for Change: The Impact of the Arts on Learning, Arts Education Partnership (AEP), 1999
Critical Links: Learning in the Arts - Student Academic and Social Development, AEP, 2001
Critical Evidence: How the ARTS Benefit Student Achievement, Sandra Ruppert, 2006
The Arts and School Reform, Annenberg Institute, 2003
Arts Education Partnerships, Rand Report, 2004
Putting the Arts in the Picture, Reframing Education 21st century, ed. Nick Rabkin, Robin Redmond, 2006
The Artistic Edge, Lisa Phillips, 2012

³ Concluding remarks: Nancy Hanks Lecture on Arts and Public Policy at the Kennedy Center by Terry Semel, immediate past Chair and Co-CEO Warner Bros. and Warner Music Group. March 20, 2000

The United States is no longer the most innovative economy in the world. The U.S. has slipped to 4th according to the most recent World Economic Forum rankings and to 6th as ranked by the Information Technology & Innovation Foundation. Nationally, Hawai'i ranks between 13th and 15th so all the issues about innovation clearly apply to our state. Science and technology are primary drivers in the global economy, but many advocates are convinced that the emphasis on STEM education is missing a key ingredient – the Arts.

A study by IBM of 1,500 CEOs worldwide (*Capitalizing on Complexity*) identified creativity as the most valuable quality needed for success in the future global economy. The 2012 Ready to Innovate report from the Conference Board concludes that employers seek creativity when they hire, and they believe that only the arts can fully develop creativity.

Research shows that, with collaboration, teachers are able to integrate creative, innovative practices into learning linking arts and other academics such as science, technology, engineering, math. The value of art and design to innovation is clear: artists and designers humanize technology, making it understandable and capable of bringing about societal change. Economic progress and breakthrough innovation comes from adding art and design to Science, Technology, Engineering and Math education: STEM + Arts = STEAM. The tools and methods of a studio-based education offer new models for creative problem solving, flexible thinking and risk-taking that are needed in today's complex and dynamic world. Innovation: STEM enables it. But Art drives it.

4. Target Population

The constituencies of the ARTS FIRST Partners include all of the people in Hawai'i. Target audiences are educators and artists all of whom influence and reach our students who will be the beneficiaries. There are more than 181,000 students and 13,000 teachers in public schools on seven islands including the Districts of Honolulu, Central, Leeward, Windward on Oahu plus Maui, Kauai and Hawai'i Districts. Another 10,000 students are enrolled in Charter Schools, and Independent Schools have approximately 50,000 students. The teachers in pre-service education programs at the University of Hawai'i are on Oahu, Maui and Hawai'i, and teaching artists can be found in many of the Alliance's 100 member organizations, along with 200 listed on the state roster.

5. Geographic Coverage

ARTS FIRST Partners reach statewide. Hawai'i Arts Alliance is an umbrella, statewide organization with over 100 organizational members. When considering the membership of these organizations, the estimated combined membership is over 40,000. The geographic coverage reaches all islands and serves communities from downtown Honolulu to Hana, to Hanalei, to Volcano and connects with every school in the state.

II. SERVICE SUMMARY and OUTCOMES

1. Scope of Work, Tasks and Responsibilities

The work during this first year is to begin building a STEAM model that can benefit our children statewide. The STEAM model of teaching and learning is a problem-solving approach that incorporates science, technology, engineering, arts, and mathematics. The most effective way to deliver integrated curriculum is by collaborative teaching. To lay the foundation for a STEAM model that can evolve and become part of education systems, we need to begin with professional development. Over the past ten years of developing and delivering integrated curriculum, the Alliance has found that ongoing professional development is needed to increase and maintain qualified teaching artists. Equally important is professional development for teachers so they can implement integrated curriculum and work collaboratively.

The work will begin with an intensive 4-day Institute in June 2013 (supported by other funding sources). Although this occurs just prior to the time period covered by this GIA, it is imperative to launch the foundation so it can be developed throughout the year. When we received the 4-year national grant from the U.S. Department of Education, we were expected to use Year 1 for thorough planning and design. This was critical to the success of that education project. Therefore, following the 2013 Institute, we will focus on planning during the FY 2014 year of this GIA request.

The 2013 Institute will offer integrated curriculum of arts and science. Key elements of the requested GIA include: a) the gathering of participants in December 2013 to evaluate their progress, discover best practices, impact on student learning; b) the June 2014 annual Institute; c) year-long follow-up professional development; d) monthly observations and assessments of CR teams; e) regular planning/design sessions.

All elements of STEM will be included, but science will be the emphasis for the 2013 Institute. As observed by noted researcher and professor at Stanford University, Shirley Brice Heath, "Art is science at work. . . arts and science exist within the arc that runs from initial planning and preparation through practice and development to completions and meaningful sense."⁴ These two disciplines share commonalities: patterning, relationships, sequencing. Integrating curricula of arts and science allows teachers and students to make connections through imagination and creativity.

The 2013 Institute will serve approximately 80 - 90 teachers statewide who attend with a partner teaching artist. Teacher-artist teams will prepare for collaborative residencies that are scheduled throughout the school year. Sessions will cover creative experiential learning, critical response to exemplars, performance/presentation and evaluation. Topics also covered will be the definition of curriculum integration, lesson design, processes of creating, performing/exhibiting, responding, and assessment criteria.

⁴ Keynote address September 2012, *Worlds Together*, Tate Modern, British Museum, National Theatre and the Royal Shakespeare Co.

Creativity and scientific inquiry will overlap so teachers can discover similar patterns and develop knowledge and confidence in building the integrated lessons for implementation. All participants gather at the end of each semester to evaluate their progress and the student learning that has occurred. Building on the knowledge gained throughout the year following the 2013 Institute, the 2014 Institute will give preference to teams of three comprised of a classroom teacher, a teaching artist and a science teacher/mentor.

Hawai'i Arts Alliance will administer and coordinate the annual Institutes, ongoing residencies, contracting qualified teaching artists and consultants, development and documentation of integrated curriculum. The Alliance will work closely with other ARTS FIRST Partners, Hawai'i Association of Independent Schools, UHM College of Education, UHM College of Arts & Humanities, and other experts and faculty at UHM such as the College of Engineering, Department of Education and State Foundation on Culture and the Arts. Responsibilities for establishing the longer-term evaluation tools will be led by professors in the College of Education working closely with faculty in the College of Arts and Humanities. Teachers and students in DOE public schools and those from Independent Schools will benefit. The Hawai'i State Foundation on Culture and the Arts and the Department of Education contribute to the support of the annual Institutes and related Artists-in-the-Schools programs. The two Affiliates, Honolulu Theatre for Youth and Maui Arts & Culture Center are key to the delivery and documentation of educational services in collaboration with the DOE across the state.

2. Timeline for Services

The timeline for services under the one-year GIA will be July 1, 2013 to June 30, 2014 and will be continuous throughout the year. Collaborative Residencies will be scheduled through the school year. The teaching artists will have 25-30 contact sessions with the students of each of their partner teachers over the School Year. In these residencies, the teaching artists will support the classroom teachers through modeling, observation, co-teaching, feedback, and reflection. Teachers will continue to build their confidence and knowledge in the use and teaching of the STEAM lessons. Teaching artists will strengthen their skills in working collaboratively and integrating science content. At the end of each semester, all teams will gather to share their learning experiences as well as to evaluate the team and student learning that has taken place.

3. Quality Assurance and Evaluation

The Governing Board of Directors for Hawai'i Arts Alliance monitors the quality of programs, staff and working relationships with partners. The Chief Executive Officer reports on a monthly basis to these 15 Directors. In addition, the Kennedy Center requires an annual profile to report on the year's accomplishments and annual updates. An Independent Audit, in accordance with generally accepted auditing principles and procedures is report every year to the Board and available upon request. The management letter from the Independent Auditor is consistently excellent, with no recommendations for changes in accounting principles, procedures or presentation.

4. Measures of Effectiveness

A GIA will greatly assist our quest to improve education by supporting the development of a STEAM model that can provide up-to-date, meaningful learning to help our students be ready to meet the expectations and demands of our 21st century economy. Investment in teacher knowledge increases students' achievement. In addition, continuing demonstration of state public funds for support of quality professional development is key to attracting significant national and private resources to our state. Effectiveness of the one year of support can be measured by progress in the following.

- a. The number of integrated arts/science lessons created and prepared for implementation in the classroom. This will be a baseline for STEAM pilots.
- b. The number of classrooms/schools where STEAM curriculum was implemented, and the success as demonstrated by students understanding of the concepts in each discipline. This information can be collected from the teachers at the re-gatherings at the end of each semester.
- c. Preparation of an evaluation/assessment instrument for use as the STEAM pilots move forward into the next phase.

III. FINANCIAL

- 1. Please see the attached Budget on the forms provided.
- 2. Anticipated quarterly funding requirements for FY 2013-2014 are below.

Quarter 1	Quarter 2	Quarter 3	Quarter 4	Total Grant
\$200,000	\$110,000	\$100,000	\$50,028	\$460,028

- 3. Other sources of funding that are being sought for the STEAM pilot in FY 2014
 - National Endowment for the Arts
 - State Department of Education
 - Hawai'i Community Foundation
 - The John F. Kennedy Center for the Performing Arts
 - Designated funds under the Hawai'i Community Foundation
 - Private foundation and individual donors

- 4. No state or federal tax credits have been granted in previous years.

IV. EXPERIENCE and CAPABILITY

A. Necessary Skills and Experience

Since 1980 Hawai'i Arts Alliance has promoted and served ALL the arts as essential to a complete education. Over the past 32 years, the Alliance led statewide conferences, professional development for teachers, and artists, model arts programs in schools and communities and annually recognizes Arts Excellence schools from across the state. The Alliance led the advocacy and support for the legislation (ACT 306/01) mandating revision of the state Fine Arts standards and codifying the ARTS FIRST Partners (aka "Hawaii Arts

Education Partners"). The Alliance's statewide programs serve all ethnic groups and ages, pre-school through seniors and include all Neighbor Islands and all ethnic groups. The work of Hawai'i Arts Alliance is nationally recognized by the John F. Kennedy Center for the Performing Arts in Washington D.C. with annual awards of support for programs and operations up to the eligible maximum. The review panels consistently commend us for excellence, and our Alliance is considered one of the outstanding national models. Other evidence of experience for the Alliance are two U.S. Department of Education research grants, several National Endowment for the Arts grants, awards from the Americans for the Arts and the Ford Foundation, support from the Hawai'i Community Foundation, management of Hawai'i State Foundation on Culture and the Arts programs, Art Bento @ HiSAM (outreach for Hawai'i State Art Museum) and the statewide Artists-in-the-School (AITS) program.

The expertise of the Alliance staff is widely considered to be exemplary. Biographies on the key staff are included in section V. The Chief Executive Officer, the Education Director, the Associate Education Director, and Development Director all serve on committees and Boards within the state and nationally. The Chief Executive Officer has been invited to make presentations at the annual Kennedy Center Leadership conference and served on the National Leadership Committee. The Education Director and Associate Education Director work closely with the state arts agency, the DOE, Honolulu Theatre for Youth and Maui Arts & Cultural Center to develop and implement professional development for teachers and artists. The Development Director oversees our entrepreneurial program for the DOE Performing Arts Learning Centers.

B. Facilities

The majority of the professional development and proposed programs and services are offered on-site at DOE school campuses or the University of Hawai'i locations at Manoa, Leeward, Windward, Hilo and Kauai. Additional facilities that have been made available for Institutes and the AITS include the Mid-Pacific Institute campus, the Maui Arts & Cultural Center and the YWCA of Oahu in Honolulu. All these facilities are ADA accessible and in compliance with ADA requirements.

V. PERSONNEL: PROJECT ORGANIZATION and STAFFING

A. Proposed Staffing, Staff Qualifications, Supervision and Training

MARILYN CRISTOFORI, Chief Executive Officer, has served the Alliance since 1994 and was a key leader in the formation of the ARTS FIRST Partners. Her academic degrees include: B.A. in Education from Stanford University; Masters in Dance/Theatre from California State University; and an Executive MBA (honors) from University of Hawai'i at Manoa. Her professional credentials include Director of national Summer Arts Festivals; management of Dance Pioneers; Director of Dance Education for the Rhode Island State Council on the Arts; Executive Producer of two award-winning PBS documentaries; and performer in professional ballet and modern dance companies. She was a dance/movement specialist for the National Endowment for the Arts, Artists-in-Schools. She served on The Kennedy Center National Leadership Committee. In Hawai'i, she is on

the Affiliate Graduate Faculty for Dance and Theatre at the University of Hawai'i. She is past director of the Hawai'i Association for the Education of Young Children and Professor Emerita of California State University, Chico.

LEI AHSING, Education Director, oversees all Alliance education programs including annual Institutes and professional development workshops. She earned her M.F.A in Theatre and Dance and a B.A. in Psychology from the University of Hawai'i at Manoa and has 25 years teaching experience in arts education. She has served the Alliance since 1996. Previously, she coordinated Hawai'i State Dance Council's Creative Movement program. Ms. Ahsing coordinated the Arts & Literacy for All Research Project a U.S. DOE funded program that studied the impact of a standards based arts education program on student scores in reading, writing and teacher pedagogy, attitudes, and practices. She coordinated the previous U.S. DOE funded ARTS FIRST Windward Research Project, She assisted the Department of Education in developing the revised Hawai'i Content Standards for the Arts, and she was a key member of the Curriculum Framework Team that developed the *Essential Arts Toolkit for the K-5 Classroom Teacher: Hawai'i Fine Arts Grade Level Guide*. She works closely with the Hawai'i Department of Education, Hawai'i State Foundation on Culture and the Arts, UHM College of Education and College of Arts and Humanities, Honolulu Theater for Youth and Maui Arts & Cultural Center.

MARCIA PASQUA, Associate Education Director, is also a well-recognized visual artist specializing in printmaking, sculpture and painting. She has exhibited locally and internationally in group and juried shows. She teaches children and adults as a teaching artist and worked as an Artist Mentor in Alliance programs. She has served in residencies for Artists-in-the-Schools and as an Ambassador for "Museum in a Box" for Honolulu Museum of Art. She has taught Creative Arts Education (Art for Elementary School Teachers at Chaminade University and Figure Sculpture through the UHM Outreach College. Currently she works with Lei Ahsing in coordination of the Professional Development Workshops for Teachers.

KEVIN TAKAMORI, Development Director, brings 20 years experience to the management of grants and fundraising. At the Arts Alliance he is responsible for major gift cultivation, annual giving, grants writing and management, corporate and foundation relations, donor relations and gift planning. He also oversees the entrepreneurial program that benefits the nine Performing Arts Learning Centers in public schools statewide. Born and raised in Honolulu, he is a graduate of 'Iolani School, the University of Hawai'i, and Harvard University. His career began at Harvard, where he managed the alumni travel program during Harvard's historic \$2.6 billion capital campaign. After 15 years in New England, he returned to Honolulu to lead the University of Hawai'i's Alumni Association, increasing its paid membership and annual revenue by more than 300%. In 2008 he accepted the position of vice president of advancement at Saint Louis School in Honolulu, where he helped to raise \$6.3 million in capital campaign gifts and over \$700,000 in annual giving. He also led Dominican University of California in its County, fundraising effort for the new School of Business and Leadership. Kevin will be key to the seeking of additional and future funding for the STEAM project.

DEBORAH BRZOSKA, National Arts Educator co-facilitated the first Arts in Education National Leadership Institute in Washington D.C. and served as leader for the National Assessment of Educational Progress in the Arts. She is a presenter and consultant for the Kennedy Center for Performing Arts, the Getty Center, N.Y. Alliance for Arts Education. Ms. Brzoska was our national consultant for the U.S. Department of Education research grants and is currently leading national efforts in integrated curricula.

JAMIE SIMPSON STEELE, Assistant Professor of Performing Arts for the College of Education, UHM holds a Ph.D. in Education in the area of Curriculum and Instruction. As a researcher, she has done evaluation studies for Honolulu Theatre for Youth's (HTY) ELL drama program and professional development program. Dr. Simpson Steele has published and presented scholarly works nationally and internationally. As a professional development facilitator, she actively works with teacher candidates, in-service teachers and teaching artists. She is currently a professional development and research consultant with the Alliance, HSFC, HTY, and Maui Arts & Cultural Center.

AMY LYNN SCHIFFNER, Assistant Professor of Dance and Theatre for the College of Arts and Humanities, conducts primary research and coursework on teacher training, curriculum development and arts assessment. Amy is the University site director for ArtBridge America, a program that develops and implements interdisciplinary arts education programs for local K-12 schools. In 2012, Amy wrote and co-directed an educational theatrical production for schools, *Ocean's Motion*. She received a Hawai'i State Theatre Council *Po'okela* award for outstanding choreography in this production. Amy serves on numerous committees to support critical processes that impact student learning, educational programs and policy, and the perpetuation of quality education.

DANIEL A. KELIN II is the Director of Education for Honolulu Theatre for Youth. A nationally recognized Master Teaching Artist in Drama/Theatre, he is on the National Teaching Artist roster of the John F. Kennedy Center for the Performing Arts. He has served as a Consultant and Trainer for many arts and social service organizations nationally and internationally. He was a Fulbright Scholar in 2009 and has authored four books on drama education and storytelling.

MEIJA JACOBS, Strategy and Research for IDEO, has presented at the 2012 Schools of the Future Conference in Hawai'i. She has 15 years experience in strategic planning and research and will be available with other colleagues at IDEO to advise on future planning for the development of STEAM in Hawai'i. IDEO is an award-winning global design firm that takes a human-centered, design-based approach to helping organizations in the public and private sectors innovate and grow. It helps organizations build creative culture and the internal systems required to sustain innovation and launch new ventures. IDEO has pioneered design-thinking for educators aimed at developing meaningful solutions for school and classroom practices.

B. Organization Chart

Please see the attached Organization Chart on the following page.

VI. OTHER

A. Litigation

There is no past nor pending litigation in which Hawai'i Alliance for Arts Education DBA Hawai'i Arts Alliance is a party.

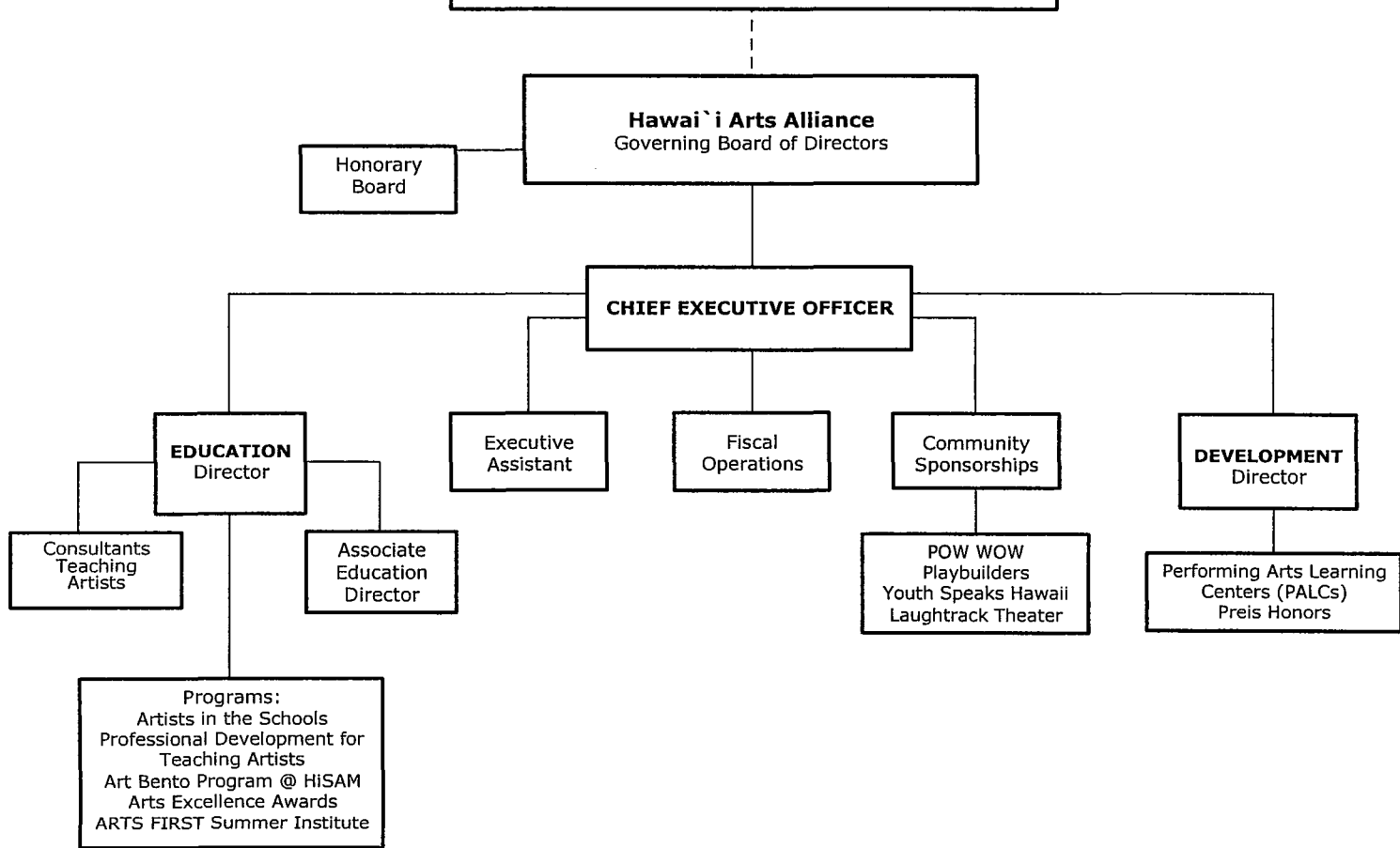
B. Licensure or Accreditation

Not applicable.



**HAWAI`I ARTS ALLIANCE
ORGANIZATIONAL CHART**

John F. Kennedy Center for the Performing Arts
Washington, D.C.
Kennedy Center Alliance for Arts Education Network



BUDGET REQUEST BY SOURCE OF FUNDS
(Period: July 1, 2013 to June 30, 2014)

Applicant: **Hawai'i Alliance for Arts Education DBA Hawai'i Arts Alliance**

July 1, 2013 - June 30, 2014

BUDGET CATEGORIES	Total State Funds Requested (a)	Private Contributions (b)	National Sources (c)	Earned Income & Local Grants (d)	TOTAL
A. PERSONNEL COST					
1. Salaries	76,690	53,000	51,000	106,810	287,500
2. Payroll Taxes & Assessments	15,338	10,600	10,200	21,362	57,500
3. Fringe Benefits (included)	0	0	0	0	0
TOTAL PERSONNEL COST	92,028	63,600	61,200	128,172	345,000
B. OTHER CURRENT EXPENSES					
1. Airfare & Inter-Island travel	10,000	0	6,000	5,000	21,000
2. Insurance	0	0	0	10,000	10,000
3. Lease/Rental of Equipment	0	0	0	0	0
4. Lease/Rental of Space	8,500	2,000	15,000	15,000	40,500
5. Staff Training	1,000	0	0	10,000	11,000
6. Supplies: Arts & Education	17,500	2,000	15,000	5,000	39,500
7. Hospitality, Lodging	0	2,000	3,000	5,000	10,000
8. Utilities	0	0	7,500	7,500	15,000
9. Teaching Artist Fees	100,000	25,000	20,000	5,000	150,000
10. Classroom Teachers Stipends	50,000	0	10,000	10,000	70,000
11. Science Mentor Honorariums	50,000	0	10,000	10,000	70,000
12. Ground Transportation	5,000	0	0	2,000	7,000
13. Education Consultants	79,000	15,000	20,000	0	114,000
14. Evaluator	40,000	0	15,000	10,000	65,000
15. Marketing and Public Relations	3,000	0	3,000	4,000	10,000
16. Printing, Copying	4,000	0	5,000	5,000	14,000
17. General, Administrative	0	5,000	0	15,000	20,000
TOTAL OTHER CURRENT EXPENSES	368,000	51,000	129,500	118,500	667,000
C. EQUIPMENT PURCHASES	0	0	0	0	0
D. MOTOR VEHICLE PURCHASES	0	0	0	0	0
E. CAPITAL	0	0	0	0	0
TOTAL (A+B+C+D+E)	460,028	114,600	190,700	246,672	1,012,000
SOURCES OF FUNDING		Budget Prepared By:			
(a) Total State Funds Requested	460,028	Marilyn Cristofori		533-2787	
(b) Private Contributions	114,600	Name		Phone	
(c) National Sources	190,700	Signature of Authorized Official		Date	
(d) Earned Income & Grants	246,672	Marilyn Cristofori, Chief Executive Officer		01/30/2013	
TOTAL BUDGET	1,012,000	Name and Title			

Applicant **Hawai'i Alliance for Arts Education DBA Hawai'i Arts Alliance**

BUDGET JUSTIFICATION		PERSONNEL - SALARIES AND WAGES		July 1, 2013 - June 30, 2014	
POSITION TITLE	FULL TIME EQUIVALENT	ANNUAL SALARY A	% OF TIME ALLOCATED TO GRANT REQUEST B	TOTAL STATE FUNDS REQUESTED (A x B)	
Chief Executive Officer	1	83,000	15%	\$12,450	
Education Director	1	68,500	46%	\$31,510	
Associate Education Director	1	35,000	46%	\$16,100	
Development Director	1	64,000	15%	\$9,600	
Executive Assistant/ Database	1	37,000	19%	\$7,030	
		287,500		\$76,690	
Payroll Taxes & Assessments =20% of Total		57,500		\$15,338	
Fringe Benefits - included		0		\$0	
TOTAL		345,000		\$92,028	
JUSTIFICATION/COMMENTS:					
All personnel at Hawai'i Arts Alliance work intensively toward Education mission.					
The CEO provides oversight and national representation for the programs and					
seeks national and private funds. The CEO is connected to the national Arts Education Partnership,					
the Americans for the Arts and The John F. Kennedy Center for the Performing Arts.					
The Education Director and the Associate Education Director devote all their time to the education					
mission and are both deeply involved in statewide relationships with teachers and partners for STEAM.					
The Development Director oversees education programs that emphasize methods and					
opportunities for schools and member organizations to seek private and community funds.					
Future plans are to seek national support from agencies such as National Science Foundation,					
and he brings particular expertise in that area.					
The Executive Assistant is needed for support of all activities associated with the scheduling					
and coordination of Institutes, workshops, residencies, and continual update and maintenance					
of the database, an essential component of this project.					

BUDGET JUSTIFICATION - EQUIPMENT AND MOTOR VEHICLES

Applicant: Hawai'i Alliance for Arts Education DBA Hawai'i Arts Alliance

Period: July 1, 2013 to June 30, 2014

DESCRIPTION EQUIPMENT	NO. OF ITEMS	COST PER ITEM	TOTAL COST	TOTAL BUDGETED
NOT APPLICABLE for this request			\$ -	
			\$ -	
			\$ -	
			\$ -	
			\$ -	
TOTAL:				0
JUSTIFICATION/COMMENTS:				

DESCRIPTION OF MOTOR VEHICLE	NO. OF VEHICLES	COST PER VEHICLE	TOTAL COST	TOTAL BUDGETED
NOT APPLICABLE for this request			\$ -	
			\$ -	
			\$ -	
			\$ -	
			\$ -	
TOTAL:				0
JUSTIFICATION/COMMENTS:				

**BUDGET JUSTIFICATION
CAPITAL PROJECT DETAILS**

Applicant: Hawai'i Alliance for Arts Education DBA Hawai'i Arts Alliance
 Period: July 1, 2013 to June 30, 2014

FUNDING AMOUNT REQUESTED						
TOTAL PROJECT COST	ALL SOURCES OF FUNDS RECEIVED IN PRIOR YEARS		STATE FUNDS REQUESTED	OTHER SOURCES OF FUNDS REQUESTED	FUNDING REQUIRED IN SUCCEEDING YEARS	
	FY: 2011-2012	FY: 2012-2013	FY:2013-2014	FY:2013-2014	FY:2014-2015	FY:2015-2016
PLANS	Not Applicable					
LAND ACQUISITION	Not Applicable					
DESIGN	Not Applicable					
CONSTRUCTION	Not Applicable					
EQUIPMENT	Not Applicable					
TOTAL:	0	0	0	0	0	0
JUSTIFICATION/COMMENTS:						

**DECLARATION STATEMENT OF
APPLICANTS FOR GRANTS AND SUBSIDIES PURSUANT TO
CHAPTER 42F, HAWAI'I REVISED STATUTES**

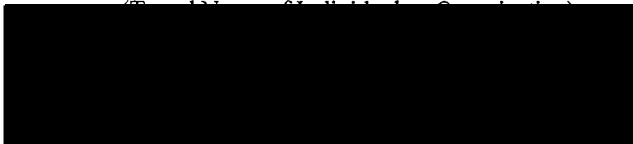
The undersigned authorized representative of the applicant certifies the following:

- 1) The applicant meets and will comply with all of the following standards for the award of grants and subsidies pursuant to Section 42F-103, Hawai'i Revised Statutes:
 - a) Is licensed or accredited, in accordance with federal, state, or county statutes, rules, or ordinances, to conduct the activities or provide the services for which a grant or subsidy is awarded;
 - b) Complies with all applicable federal and state laws prohibiting discrimination against any person on the basis of race, color, national origin, religion, creed, sex, age, sexual orientation, or disability;
 - c) Agrees not to use state funds for entertainment or lobbying activities; and
 - d) Allows the state agency to which funds for the grant or subsidy were appropriated for expenditure, legislative committees and their staff, and the auditor full access to their records, reports, files, and other related documents and information for purposes of monitoring, measuring the effectiveness, and ensuring the proper expenditure of the grant or subsidy.
- 2) The applicant meets the following requirements pursuant to Section 42F-103, Hawai'i Revised Statutes:
 - a) Is incorporated under the laws of the State; and
 - b) Has bylaws or policies that describe the manner in which the activities or services for which a grant or subsidy is awarded shall be conducted or provided.
- 3) If the applicant is a non-profit organization, it meets the following requirements pursuant to Section 42F-103, Hawai'i Revised Statutes:
 - a) Is determined and designated to be a non-profit organization by the Internal Revenue Service; and
 - b) Has a governing board whose members have no material conflict of interest and serve without compensation.

Pursuant to Section 42F-103, Hawai'i Revised Statutes, for grants or subsidies used for the acquisition of land, when the organization discontinues the activities or services on the land acquired for which the grant or subsidy was awarded and disposes of the land in fee simple or by lease, the organization shall negotiate with the expending agency for a lump sum or installment repayment to the State of the amount of the grant or subsidy used for the acquisition of the land.

Further, the undersigned authorized representative certifies that this statement is true and correct to the best of the applicant's knowledge.

Hawai'i Alliance for Arts Education DBA Hawai'i Arts Alliance



January 30, 2013
(Date)

Marilyn Cristofori

Chief Executive Officer