

House District All
Senate District All

THE TWENTY-SEVENTH LEGISLATURE
HAWAII STATE LEGISLATURE
APPLICATION FOR GRANTS & SUBSIDIES
CHAPTER 42F, HAWAII REVISED STATUTES

Log No:

For Legislature's Use Only

Type of Grant or Subsidy Request:

GRANT REQUEST – OPERATING

GRANT REQUEST – CAPITAL

SUBSIDY REQUEST

"Grant" means an award of state funds by the legislature, by an appropriation to a specified recipient, to support the activities of the recipient and permit the community to benefit from those activities.

"Subsidy" means an award of state funds by the legislature, by an appropriation to a recipient specified in the appropriation, to reduce the costs incurred by the organization or individual in providing a service available to some or all members of the public.

"Recipient" means any organization or person receiving a grant or subsidy.

STATE DEPARTMENT OR AGENCY RELATED TO THIS REQUEST (LEAVE BLANK IF UNKNOWN):

STATE OF HAWAII, DEPARTMENT OF AGRICULTURE

STATE PROGRAM I.D. NO. (LEAVE BLANK IF UNKNOWN):

1. APPLICANT INFORMATION:

Legal Name of Requesting Organization or Individual:
Hawaii Agricultural Foundation
Dba:

Street Address: 667 Paikau Street, Honolulu, HI 96816

Mailing Address: P.O. Box 236010, Honolulu, HI 96823

2. CONTACT PERSON FOR MATTERS INVOLVING THIS APPLICATION:

Name DENISE HAYASHI YAMAGUCHI

Title: Executive Director

Phone # 808-386-2538

Fax # 808-595-6788

e-mail denisehayashi@hawaii.rr.com

3. TYPE OF BUSINESS ENTITY:

- NON PROFIT CORPORATION
 FOR PROFIT CORPORATION
 LIMITED LIABILITY COMPANY
 SOLE PROPRIETORSHIP/INDIVIDUAL

6. DESCRIPTIVE TITLE OF APPLICANT'S REQUEST:

HAWAII AGRICULTURAL FOUNDATION'S AG EDUCATION PROGRAMS

4. FEDERAL TAX ID #: [REDACTED]

5. STATE TAX ID #: [REDACTED]

7. AMOUNT OF STATE FUNDS REQUESTED:

FY 2013-2014: \$ 250,000

8. STATUS OF SERVICE DESCRIBED IN THIS REQUEST:

- NEW SERVICE (PRESENTLY DOES NOT EXIST)
 EXISTING SERVICE (PRESENTLY IN OPERATION)

SPECIFY THE AMOUNT BY SOURCES OF FUNDS AVAILABLE AT THE TIME OF THIS REQUEST:

STATE \$ _____

FEDERAL \$ _____

COUNTY \$ _____

PRIVATE/OTHER \$ 120,000

TYPE: [REDACTED] TITLE: _____

DENISE HAYASHI YAMAGUCHI
NAME & TITLE

1/31/2012
DATE SIGNED

Application for Grants and Subsidies

If any item is not applicable to the request, the applicant should enter "not applicable".

I. Background and Summary

This section shall clearly and concisely summarize and highlight the contents of the request in such a way as to provide the State Legislature with a broad understanding of the request. Include the following:

1. A BRIEF description of the applicant's background;

The mission of the Hawaii Agriculture Foundation (HAF) is to promote the long-term viability and to increase awareness and appreciation of agriculture and farming in Hawaii. This will be achieved through research, education, training, partnerships and public outreach

2. The goals and objectives related to the request;

The goal of the HAF's Ag Education Partnership Program is to introduce elementary, intermediate and high school students to the agricultural industry and the diversity of careers available in agriculture. The program aims to ensure that we foster and maintain a strong workforce needed to grow and sustain Hawaii's agricultural industry.

The Ag Education Partnership Program objectives are to: (1) create greater student awareness and interest in agriculture and improve the perception of Hawaii's third largest industry and its impact on the island economy; (2) develop more effective partnerships between industry and academia to recruit more students and better prepare them with the skills they need for the job; (3) better align the needs of education and agriculture and create programs that help facilitate the transition for students from school to work.

3. State the public purpose and need to be served;

The HAF supports the Administration's Guiding Principles: Food and Agriculture

- Food security as the primary goal
- Entrepreneurial farming and jobs
- Preserving and advancing rural communities
- Sustaining natural resources
- Agricultural innovation

- Dialogue, planning and shared commitment

*Note: From 2010 Abercrombie for Governor “Food and Agriculture – An Agricultural Renaissance in Hawaii.”

As the State’s third largest industry, agriculture continues to be an important part of Hawaii’s history and economy, generating \$2.9 billion to the state’s annual economy and directly and indirectly providing 42,000 jobs.

While production from plantation crops has declined, diversified agriculture production has had tremendous growth over the last 10 years. Small farms growing diversified agricultural products such as specialty exotic fruits, coffee, macadamia nuts, flowers, vegetables, are not only being cultivated for Hawaii’s markets, but also for major exports to destinations around the world. In addition, new value-added consumer product industries have also emerged, fueled by the culinary arts, biotechnology, plant science, aquaculture, forestry, ornamental horticulture, and other agriculture-related fields.

With the growth in diversified agriculture, the diversity and demand for jobs in farming, forestry, ranching and fishing has also risen. Today, Hawaii can account for 7,500 farms and ranches and in order to prosper, agricultural producers must have qualified graduates with varying degrees of education to succeed.

It is apparent that Hawaii needs a larger and more skilled workforce for its agricultural industry, but meeting this need is complicated by the diversity of skills needed and jobs available. Currently, agriculture and agricultural science courses are offered in some of Hawaii’s schools and there have been activities that have been successful in creating greater interest. However, the “journey” from elementary to post-secondary school to work is often weak and disjointed. The goal of HAF program is to build upon the schools’ existing programs and to bridge the gaps between academia and industry.

4. Describe the target population to be served;

The target populations to be served are K-12 public and private school students with preference to public school students.

5. Describe the geographic coverage.

State of Hawaii

6. Describe how the request will, in the case of a grant, permit the community to benefit from those activities; or for a subsidy, reduce the costs incurred by the organization or individual in providing a service available to some or all members of the public.

The grant will provide the needed funds to create the HAF Educational Programs for public and private school students to ensure that we strong workforce pipeline to support the growth and sustainability of Hawaii's agricultural and farming industry.

In a 2007 Strategic Plan for Transforming Agriculture and Natural Resources Education in Hawaii document created by an advisory board consisting of representatives from the private sector, the UH- Manoa, UH-Hilo, UH community Colleges, the Hawaii Department of Agriculture, Labor and Education, the following four key areas were cited as needs for ensuring a strong workforce in agriculture:

- Create greater awareness and interest in agriculture career fields and improve public perception and support
- Develop more effective partnerships between industry and academia – utilize partnerships to recruit more students into these careers and better prepare them for these careers
- Improve the preparedness of students in agriculture
- Develop articulated academic programs for students interested in agriculture careers

To address those stated needs, HAF is proposing to develop the following programs:

Ag in the Classroom

For the elementary school students, an introductory program, Ag in the Classroom will be created. It will be based on the successful program created by the Maui County Farm Bureau for second graders which has reached more than 2,000 students over the last six years.

The 10-month series of in-class farmer presentations and on-the-farm field activities, titled Where Would We Be Without Seeds, is centered around the life cycle of plants. Ag in the Classroom was developed from the a curriculum designed by the Michigan Farm Bureau for second-graders and will be offered to any public, private, or charter school willing to participate.

The program introduces students to the vital role of agriculture plays in our daily lives. To be taught by farmers and community volunteers, Ag in the Classroom introduces young students to careers in agriculture and plants a seed that a career in agriculture is a positive choice, with possibilities ranging from in-the-field management and engineering to environmental and food sciences, biochemistry, agricultural economy, technology, research and public policy.

The program will combine in-class visits by the farmers with a field trip to a farm where the students will have the opportunity to meet and talk with the farmer. They will participate in hands-on activities, including planting a seed they can take home, and enjoy local farm fresh products. The field trip allows students, as

well as the educator to see first-hand what farmers do and how they contribute to Hawaii's community.

In the Field - Ag Industry Partnership

The HAF will create two initiatives to provide middle and high school students with the opportunity to experience first hand the world of work "in the field." HAF will work with industry to develop a partnership program that will introduce students interested in the agriculture to different industries and businesses. The program will take students to a minimum of three agricultural-related business during the school year. Through this initiative students will be paired with a workplace mentor who they will "shadow" for the day. The job shadow program will also allow businesses to interact with educators to ensure that what students are learning aligns with the skills needed by industry.

Through a guided trip, students will have the opportunity to be in the real world environment.

In the Field – Ag Internships

The HAF will also create an Ag Internship Program for high school and college level students to intern at one of many Hawaii agricultural related businesses. Many organizations see the importance in having an established internship program, but do not know have the capacity to get the program started. The internship programs can be a significant way to attract new talent and gain valuable assistance from the intern while intern gains from real-life work experience that could help find a job and jump start their careers.

The programs will promote the sustainability and revival of agriculture messaging that benefit the community.

II. Service Summary and Outcomes

The Service Summary shall include a detailed discussion of the applicant's approach to the request. The applicant shall clearly and concisely specify the results, outcomes, and measures of effectiveness from this request.

1. Describe the scope of work, tasks and responsibilities;

The HAF will develop both the Ag in the Classroom and In the Field programs simultaneously. With the support of the Maui County Farm Bureau, the HAF will design an Ag in the Classroom program for Oahu elementary students modeled after the Maui Ag in the Classroom Program. In addition, it will work with the Hawaii Island and Kauai County Farm Bureau's to design a program to support elementary schools on Kauai and the Big Island. Oahu currently has approximately 231 public and private elementary schools. Of that total, the HAF intends to secure 30 schools to participate in the second grade Ag in the Classroom on O'ahu. The program will require a farmer to visit each school for

about 2 – 6 hours depending on the number of classes per each elementary school to deliver the program. The program will commence on a different day with the students visiting a farm or agricultural facility in Honolulu. It is estimated that the program will reach 200+ second graders in the first year.

The In the Field Ag Industry Partnership program, designed for students in middle and high school students, will be developed in coordination with the Department of Education. There are currently six Oahu high schools providing exemplary agricultural related programs, Leilehua, Mililani, Waipahu, Campbell, Kapolei and Mililani. The HAF will work with these six schools to develop “In the Field” program that will allow students to visit a minimum of three agricultural-related business during the school year. Through this initiative students will be paired with a workplace mentor who they will “shadow” for the day. The job shadow program will also allow businesses to interact with educators to ensure that what students are learning aligns with the skills needed by industry.

The In the Field Ag Industry Internship program will provide high school and college level students with the opportunity to intern at one of many Hawaii agricultural related businesses. In the first year, the HAF work with a minimum of at least 15 agricultural-related businesses to create intern programs.

2. The applicant shall provide a projected annual timeline for accomplishing the results or outcomes of the service;

The projected timeline for accomplishing the results and outcome cited in #1 is two years.

3. The applicant shall describe its quality assurance and evaluation plans for the request. Specify how the applicant plans to monitor, evaluate, and improve their results; and

1. Increase awareness about agricultural careers by introducing elementary students to the vital role of agriculture plays in our daily lives. To be taught by farmers and community volunteers, Ag in the Classroom introduces young students to careers in agriculture and plants a seed that a career in agriculture is a positive choice, with possibilities ranging from in-the-field management and engineering to environmental and food sciences, biochemistry, agricultural economy, technology, research and public policy.

- a. Monitor and Evaluate--We will track the number of schools and students and provide evaluation surveys to teachers.
- b. Improve Results--We will constantly look for new opportunities to improve the program through student and teacher feedback. We will also update our presentation as new data and information becomes available.

2. Develop more effective partnerships between industry and academia – utilize partnerships to recruit more students into these careers and better prepare them for these careers
 - a. Monitor and Evaluate--We will track the number of partnerships created and will track the number of long-term relationships developed.
 - b. Improve Results--We constantly look for feedback from industry partners to help schools improve their knowledge base and curriculum.

3. Increase the preparedness of students for the agricultural workforce through the development of an agricultural industry internship program.
 - a. Monitor and Evaluate--We track the number of internships created between industry and high school and community colleges.
 - b. Improve Results--We will work increase the number of internship programs and improve the preparedness of students entering the workforce.

4. The applicant shall list the measure(s) of effectiveness that will be reported to the State agency through which grant funds are appropriated (the expending agency). The measure(s) will provide a standard and objective way for the State to assess the program's achievement or accomplishment. Please note that if the level of appropriation differs from the amount included in this application that the measure(s) of effectiveness will need to be updated and transmitted to the expending agency.
 1. Increase awareness about agricultural careers by introducing elementary students to the vital role of agriculture plays in our daily lives by reaching a minimum of 30 schools and 200 students on Oahu in FY2014 and FY 2015. We will work in partnership with the Hawaii Island Farm Bureau and Kauai County Farm Bureau to develop their programs.

 2. Increase the number of industry partnership programs with schools. We plan to coordinate a minimum of 15 formal partnerships in place by FY2014 and increase that number to 20 formal partnerships by FY2015. This will include partnerships through both "In the Field" Industry Partnership Program and Internship programs.

It should be noted that the HAF will sustain these program in future years through funding from private grants, corporate sponsors and through individual contributions.

III. Financial

Budget

1. The applicant shall submit a budget utilizing the enclosed budget forms as applicable, to detail the cost of the request.
2. The applicant shall provide its anticipated quarterly funding requests for the fiscal year 2012-2013.

Quarter 1	Quarter 2	Quarter 3	Quarter 4	Total Grant
\$62,500	\$62,500	\$62,500	\$62,500	\$250,000

3. The applicant shall provide a listing of all other sources of funding that they are trying to obtain for fiscal year 2012-2013.

Hawaii Community Foundation - \$25,000
 Ulupono Initiative - \$25,000
 Harold KL Castle Foundaiton - \$25,000
 Cooke Foundation - \$5,000
 HCIA (Dow Chemical, Syngenta, Monsanto) - \$30,000
 Atherton Foundation - \$25,000
 Campbell Foundation - \$25,000
 McInerny Foundation - \$25,000

4. The applicant shall provide a listing of all state and federal tax credits that have been granted within the prior three years. Additionally, the applicant shall provide a listing of all state and federal tax credits they have applied for or anticipate applying for pertaining to any capital project, if applicable.
 N/A

IV. Experience and Capability

A. Necessary Skills and Experience

The applicant shall demonstrate that it has the necessary skills, abilities, knowledge of, and experience relating to the request. State your experience and appropriateness for providing the service proposed in this application. The applicant shall also provide a listing of verifiable experience of related projects or contracts for the most recent three years that are pertinent to the request.

The Hawaii Agricultural Foundation has been in existence for the last five years. It has been successful in developing a number of initiatives including the Hawaii Food & Wine Festival, Kunia Ag Park and Lei Fresh. The Hawaii Food & Wine Festival is now a four day event showcasing 60+ chefs from around the world

using Hawaii's local produce. The Kunia Ag Park is a 184 acre public-private partnership with Island Palm Communities and Monsanto which provides 18 small farmers with land to farm. Lei Fresh was developed with a grant from the Hawaii Community Foundation to connect farmers to the community through a mobile application.

The HAF has a five year strategic plan with priorities to develop its Educational Programming, specifically, "Ag in the Classroom" and "In the Field."

B. Facilities

The applicant shall provide a description of its facilities and demonstrate its adequacy in relation to the request. If facilities are not presently available, describe plans to secure facilities. Also describe how the facilities meet ADA requirements, as applicable.

The HAF does not currently have facilities and does not have plans to secure facilities.

V. Personnel: Project Organization and Staffing

A. Proposed Staffing, Staff Qualifications, Supervision and Training

The applicant shall describe the proposed staffing pattern and proposed service capacity appropriate for the viability of the request. The applicant shall provide the qualifications and experience of personnel for the request and shall describe its ability to supervise, train and provide administrative direction relative to the request.

The HAF is managed by the Executive Director (ED) who reports to a 12 member Board of Directors. See qualifications below:

Denise Hayashi, Executive Director, Hawaii Agricultural Foundation

Prior to working for the HAF, Hayashi was a consultant to the Hawaii Farm Bureau Federation where she helped craft the language, vision and mission of the Foundation. She has more than eighteen years working as a consultant and executive with non-profit organizations specializing in strategic planning, fund development, marketing, government affairs, public relations and community relations. Her past employers and clients include NCL America, Bishop Museum, Japanese Cultural Center, Hawaii Foodbank, U.S. Senator Daniel K. Inouye, 3Rs, Artisans' Farmers Alliance, Durrant Media Five, Hawaii Institute for Public Affairs, Hawaii Farm Bureau Federation, Coast Guard Foundation, Hawaii Forest Industry Association, Hawaii Forest Institute, Hawaii High School Athletic Association, U.S.S. Battleship Missouri Association and the State of Hawaii Procurement Office. Highlights of her career include:

- Development of a long-term strategic planning for Hawaii Forest Institute
- Development of community relations strategies, key messaging and educational programs for NCL America
- Fund development, governmental relations and public relations strategies to secure funding support for Bishop Museum including the Mamiya Science Adventure Center, ADA facility compliance, Amy Greenwell Ethnobotanical Garden (Hawaii Island), a new Magnet School from the State, and Hawaiian Hall.

Ryan Tanaka, Financial Advisor, Hawaii Agricultural Foundation

Ryan Tanaka has an extensive career background corporate finance and entrepreneurship. He has worked in the CFO office of Tokyo Star Bank and supported the firm on its over \$2.4 billion initial public offering. After the bank went public, Tanaka joined the Tokyo CEO office of Deutsche Bank, a top 10 global investment bank. At Deutsche Bank, Tanaka assisted top management in analyzing potential acquisitions for five separate industries, with business valuation assessments exceeding \$13 billion.

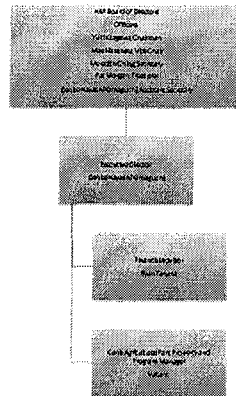
Tanaka returned to Hawaii in July 2007, and opened Investment Quorum International Advisory ("IQ International"). Since its opening, IQ International has assisted a number of companies in Hawaii, Washington, and Dubai to experience significant development, growth, and improved managerial decision making. In August 2010, Tanaka was appointed Chief Operating & Financial Officer at Saint Louis School. He joined the Hawaii Agricultural Foundation in July 2011.

The bios for the Hawaii Ag Foundation Board of Directors can be found at: www.hawaiiagriculturalfoundation.org

B. Organization Chart

The applicant shall illustrate the position of each staff and line of responsibility/supervision. If the request is part of a large, multi-purpose organization, include an organizational chart that illustrates the placement of this request.

Hawaii Agricultural Foundation
Organization Chart
January 31, 2013



VI. Other

A. Litigation

The applicant shall disclose any pending litigation to which they are a party, including the disclosure of any outstanding judgement. If applicable, please explain.

None.


B. Licensure or Accreditation

Specify any special qualifications, including but not limited to licensure or accreditation that applicant possesses relevant to this request.

None.

BUDGET REQUEST BY SOURCE OF FUNDS
(Period: July 1, 2013 to June 30, 2014)

Applicant: Hawaii Agricultural Foundation

BUDGET CATEGORIES	Total State Funds Requested (a)	(b)	(c)	(d)
A. PERSONNEL COST				
1. Salaries	175,000			
2. Payroll Taxes & Assessments	24,000			
3. Fringe Benefits	12,000			
TOTAL PERSONNEL COST	211,000			
B. OTHER CURRENT EXPENSES				
1. Airfare, Inter-Island	3,000			
2. Insurance				
3. Lease/Rental of Equipment				
4. Lease/Rental of Space				
5. Staff Training	1,000			
6. Supplies	7,500			
7. Telecommunication	1,000			
8. Utilities				
9. School Bus Transportation	1,500			
10. Milage	3,000			
11. Refreshments for Students	2,500			
12. Printing	5,000			
13. Publicity	7,500			
14. Website Deveopment	5,000			
15.				
16.				
17.				
18.				
19.				
20.				
TOTAL OTHER CURRENT EXPENSES	37,000			
C. EQUIPMENT PURCHASES	2,000			
D. MOTOR VEHICLE PURCHASES				
E. CAPITAL				
TOTAL (A+B+C+D+E)	250,000			
SOURCES OF FUNDING		Budget Prepared By:		
(a) Total State Funds Requested	250,000	Denise Hayashi Yamaguchi	808-386-2538	
(b) Other	120,000		Phone	
(c)			January 31, 2013	
(d)			Date	
TOTAL BUDGET	370,000	Denise Hayashi Yamaguchi, Executive Director Name and Title (Please type or print)		

BUDGET JUSTIFICATION PERSONNEL - SALARIES AND WAGES

Applicant: Hawaii Agricultural Foundation

Period: July 1, 2013 to June 30, 2014

POSITION TITLE	FULL TIME EQUIVALENT	ANNUAL SALARY A	% OF TIME ALLOCATED TO GRANT REQUEST B	TOTAL STATE FUNDS REQUESTED (A x B)
Ag in the Classroom Program Manager	1	\$60,000.00	100.00%	\$ 60,000.00
Ag Industry Partnership Program Manager	1	\$65,000.00	100.00%	\$ 65,000.00
Executive Director	1	\$72,000.00	50.00%	\$ 36,000.00
Financial Advisor	1	\$30,000.00	47.00%	\$ 14,000.00
				\$ -
				\$ -
				\$ -
				\$ -
				\$ -
				\$ -
				\$ -
				\$ -
				\$ -
				\$ -
				\$ -
				\$ -
TOTAL:				175,000.00

JUSTIFICATION/COMMENTS:
The Executive Director and Financial Advisor will not be allocated benefits.

BUDGET JUSTIFICATION - EQUIPMENT AND MOTOR VEHICLES

Applicant: Hawaii Agricultural Foundation Period: July 1, 2013 to June 30, 2014

DESCRIPTION EQUIPMENT	NO. OF ITEMS	COST PER ITEM	TOTAL COST	TOTAL BUDGETED
Laptop Computer	2	\$700.00	\$ 1,400.00	\$1,400.00
Printers	2	\$300.00	\$ 600.00	600
			\$ -	
			\$ -	
			\$ -	
TOTAL:				\$2,000.00

JUSTIFICATION/COMMENTS:

DESCRIPTION OF MOTOR VEHICLE	NO. OF VEHICLES	COST PER VEHICLE	TOTAL COST	TOTAL BUDGETED
			\$ -	
			\$ -	
			\$ -	
			\$ -	
			\$ -	
TOTAL:				

JUSTIFICATION/COMMENTS:

The Ag in the Classroom Program Manager and the Industry Partnership Program Manager will require computer equipment to w

BUDGET JUSTIFICATION CAPITAL PROJECT DETAILS

Applicant: Hawaii Agricultural Foundation

Period: July 1, 2013 to June 30, 2014

FUNDING AMOUNT REQUESTED						
TOTAL PROJECT COST	ALL SOURCES OF FUNDS RECEIVED IN PRIOR YEARS		STATE FUNDS REQUESTED	OTHER SOURCES OF FUNDS REQUESTED	FUNDING REQUIRED IN SUCCEEDING YEARS	
	FY: 2011-2012	FY: 2012-2013	FY:2013-2014	FY:2013-2014	FY:2014-2015	FY:2015-2016
PLANS						
LAND ACQUISITION						
DESIGN						
CONSTRUCTION						
EQUIPMENT			2000			
TOTAL:			2,000			
JUSTIFICATION/COMMENTS: For two laptops and printers						

**DECLARATION STATEMENT
APPLICANTS FOR GRANTS AND SUBSIDIES
CHAPTER 42F, HAWAI'I REVISED STATUTES**

The undersigned authorized representative of the applicant acknowledges that said applicant meets and will comply with all of the following standards for the award of grants and subsidies pursuant to section 42F-103, Hawai'i Revised Statutes:

- (1) Is licensed or accredited, in accordance with federal, state, or county statutes, rules, or ordinances, to conduct the activities or provide the services for which a grant or subsidy is awarded;
- (2) Comply with all applicable federal and state laws prohibiting discrimination against any person on the basis of race, color, national origin, religion, creed, sex, age, sexual orientation, or disability;
- (3) Agree not to use state funds for entertainment or lobbying activities; and
- (4) Allow the state agency to which funds for the grant or subsidy were appropriated for expenditure, legislative committees and their staff, and the auditor full access to their records, reports, files, and other related documents and information for purposes of monitoring, measuring the effectiveness, and ensuring the proper expenditure of the grant or subsidy.

In addition, a grant or subsidy may be made to an organization only if the organization:

- (1) Is incorporated under the laws of the State; and
- (2) Has bylaws or policies that describe the manner in which the activities or services for which a grant or subsidy is awarded shall be conducted or provided.

Further, a grant or subsidy may be awarded to a non-profit organization only if the organization:

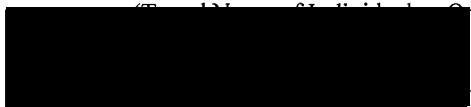
- (1) Has been determined and designated to be a non-profit organization by the Internal Revenue Service; and
- (2) Has a governing board whose members have no material conflict of interest and serve without compensation.

For a grant or subsidy used for the acquisition of land, when the organization discontinues the activities or services on the land acquired for which the grant or subsidy was awarded and disposes of the land in fee simple or by lease, the organization shall negotiate with the expending agency for a lump sum or installment repayment to the State of the amount of the grant or subsidy used for the acquisition of the land.

Further, the undersigned authorized representative certifies that this statement is true and correct to the best of the applicant's knowledge.

Hawaii Agricultural Foundation

(Typed Name of Individual or Organization)



(Signature)

January 30, 2013

(Date)

Denise Hayashi

(Typed Name)

Executive Director

(Title)