

Community Based Education Support Services (CBESS)

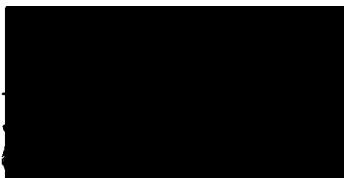
174 Kamehameha Ave Hilo Hawaii 96720 (808) 961-3664

Senate Committee on Ways and Means
Hawaii State Legislature
State Capitol, Room 208
Honolulu, HI 96813

Attention: Rod Becker

Dear Mr Becker:

As duly noted by the time and date affixed to this document, the Committee on Ways and Means of the Hawaii State Senate hereby certifies that CBESS has officially submitted, and the Committee on Finance has officially received prior to its stated deadline of 4:30 p.m. on Friday, January 31, 2013, one (1) copy of CBESS's Application for Grants and Subsidies (per Chapter 42F, Hawaii Revised Statutes) for due consideration by the 27th Legislature of the State of Hawaii for Fiscal Year 2013-2014. Please affix stamp: Received with Date.

 _____
er School

House District 2

Senate District 1

THE TWENTY-SEVENTH LEGISLATURE
APPLICATION FOR GRANTS & SUBSIDIES
CHAPTER 42F, HAWAII REVISED STATUTES

Log No: _____

For Legislature's Use Only

Type of Grant or Subsidy Request:

GRANT REQUEST – OPERATING

GRANT REQUEST – CAPITAL

SUBSIDY REQUEST

"Grant" means an award of state funds by the legislature, by an appropriation to a specified recipient, to support the activities of the recipient and permit the community to benefit from those activities.

"Subsidy" means an award of state funds by the legislature, by an appropriation to a recipient specified in the appropriation, to reduce the costs incurred by the organization or individual in providing a service available to some or all members of the public.

"Recipient" means any organization or person receiving a grant or subsidy.

STATE DEPARTMENT OR AGENCY RELATED TO THIS REQUEST (LEAVE BLANK IF UNKNOWN):

STATE PROGRAM I.D. NO. (LEAVE BLANK IF UNKNOWN): _____

I. APPLICANT INFORMATION:

Legal Name of Requesting Organization or Individual:

DbA: Community Based Education Support Services

Street Address: 174 Kamehameha Ave.

Mailing Address:

CBESS
174 Kamehameha Ave.
Hilo, HI 96720

2. CONTACT PERSON FOR MATTERS INVOLVING THIS APPLICATION:

Name JOHN THATCHER

Title Director

Phone # 808-895-6856

Fax # 808-961-2665

e-mail john_thatcher@hawaii.rr.com

3. TYPE OF BUSINESS ENTITY:

- NON PROFIT CORPORATION
- FOR PROFIT CORPORATION
- LIMITED LIABILITY COMPANY
- SOLE PROPRIETORSHIP/INDIVIDUAL

6. DESCRIPTIVE TITLE OF APPLICANT'S REQUEST:

COMMUNITY BASED EDUCATION SERVICES (AFFILIATED WITH CONNECTIONS PUBLIC CHARTER SCHOOL, IS SEEKING A \$2.5 MILLION GRANT IN AID TO ASSIST IN THE CONSTRUCTION OF A NEW CAMPUS ON LAND LEASED FROM DLNR. CURRENTLY CONNECTIONS PCS LEASES TWO PROPERTIES FOR ITS ELEMENTARY/MIDDLE SCHOOL (KRESS BUILDING) AND THE HIGH SCHOOL (NANI MAU GARDENS). NEW CAMPUS WILL CONSOLIDATE THE SCHOOL, BE LEED CERTIFIED, AND OFFER A VARIETY OF COMMUNITY BASED SERVICES IN CONJUNCTION WITH THE SCHOOL

4. FEDERAL TAX ID #: [REDACTED]

5. STATE TAX ID #: [REDACTED]

7. AMOUNT OF STATE FUNDS REQUESTED:

FISCAL YEAR 2014: \$ 2,500,000

8. STATUS OF SERVICE DESCRIBED IN THIS REQUEST:

- NEW SERVICE (PRESENTLY DOES NOT EXIST)
- EXISTING SERVICE (PRESENTLY IN OPERATION)

SPECIFY THE AMOUNT BY SOURCES OF FUNDS AVAILABLE

AT THE TIME OF THIS REQUEST:

STATE \$ _____

FEDERAL \$ _____

COUNTY \$ _____

PRIVATE/OTHER \$169,000

TYPE NAME & TITLE OF AUTHORIZED REPRESENTATIVE:

[REDACTED]

JOHN THATCHER, DIRECTOR
NAME & TITLE

1/29/13
DATE SIGNED

Application for Grants and Subsidies

If any item is not applicable to the request, the applicant should enter "not applicable".

I. Background and Summary

This section shall clearly and concisely summarize and highlight the contents of the request in such a way as to provide the State Legislature with a broad understanding of the request. Include the following:

1. A brief description of the applicant's background; Community Based Education Support Services – CBESS (CBESS), a 501c3 nonprofit organization, was established as an affiliated support organization for Connections Public Charter School (CPCS). Connections received its charter in 2000 and opened with 184 students in grades K-6. By August 2001 the charter school had expanded to a K-12 program. It's current enrollment is 350 students, with 24 FTE teachers.

Connections, which evolved from a school within a DOE school at Mountain View Elementary School, was created from a vision shared by educators, parents, students and members of the community to provide an innovative, community-based learning experience for families of Hilo and the surrounding areas.

As a public charter school Connections provides a free education sustained by public funding and cannot charge tuition. Its faculty and staff are public employees receiving the same benefits as other state employees. Students are bound by the same standards as Hawai'i's DOE schools, and take the same tests. The mission of Hawai'i's charter schools includes cutting red tape, innovating, serving as a resource for other schools, and offering a choice for parents, students and staff. Charter schools enjoy more flexibility in governing the school, creating its curriculum, managing the size of the school and its classes, setting its school schedule and calendar, integrating hands-on learning, hiring staff, and negotiating with public unions.

Connections is currently located on two sites: the elementary and middle schools are located in the Kress Building on Kamehameha Ave in Hilo. The Kress building is owned by CBESS. The high school is presently located in leased facilities at the Nani Mau Gardens just outside Hilo Town.

Connections is known for its hands-on, real world applied learning curriculum, including robotics, sustainable agriculture, and ocean studies. In 2010 Connections joined with three other leading charter schools to form The Charter School S.T.E.M.(Science, Technology, Engineering, Math) Consortium. The Consortium was formed to assist Hawai'i's charter schools in developing their STEM programs for students, to increase student performance, develop authentic accountability and performance measurements, and to build a collective capacity among K-12 schools. The Mission Statement for the Consortium is as follows:

To analyze, assess, facilitate, coordinate, service and promote hands-on, integrative "S.T.E.M. – for – ALL STUDENTS"; improve student performance; provide professional

development and S.T.E.M. leadership for teachers; develop authentic performance measures and greater accountability; and develop partnerships and regional resource centers with S.T.E.M. providers and other schools.

As a member of the Consortium, Connections has undergone an innovative S.T.E.M. AUDIT, the purpose of which is to assess the degree to which S.T.E.M. has been a feature of the school's curriculum, collect baseline and comparable data to assess the status of S.T.E.M. knowledge, attitudes, and education throughout the system, and suggest ways in which the various asset and strengths of individual schools can be partnered and leveraged to improve S.T.E.M. education in Hawai'i, and to understand and improve the S.T.E.M. capacity of the school and its faculty.

Connections' secondary curricula includes THE MAKERY project. THE MAKERY is a sophisticated multi-dimensional computer controlled fabrication mill that, using computer aided designs by students, can fabricate products made of wood, plastic, metal, etc. Among its capabilities is to produce high quality Hawai'ian steel guitars, environmental sensors, and, THE MAKERY can make...A MAKERY.

Connections serves a diverse student population. It is a Title I School, with a high percentage of Special Education Students. The high school has well over 20% SPED enrollment. Ethnically the 2012-2013 student population is as follows in descending order: 44% Native Hawai'ian (or Other Pacific Islander), 38% White (including Portuguese), 11% Asian, 3% American Indian, 2% African American, and 2% Hispanic. The city of Hilo's population is 34% Asian, 16% White, 14% Native Hawai'ian or Other Pacific Islander, 10% Hispanic, 0.5% African American, and 0.3% Native American.

CBESS seeks to provide Connections with the ability to consolidate their Elementary, Middle and High Schools on a single campus that is LEED certified and offers opportunities to fulfill the mission of the school as well as serve as a major resource for the community.

The school has secured a long term lease from the State of Hawai'i on a vacant, undeveloped 72 acre parcel on Mauna Loa's lower slopes above Hilo south of Kaumana Drive. Plans for the new site include an elementary, middle and high school.

CBESS would like to enhance the innovative elements planned for the new school to include a senior day care center, a residential student visitor dorm, a S.T.E.M. applied learning center, agricultural sustainability learning facilities, and an arts center. These additional facilities will also provide unique opportunities for the greater community to benefit and partner with the school.

2. The goals and objectives related to the request;

CBESS is requesting a \$2,500,000 capital grant from the State of Hawai'i to assist in the immediate implementation of planning, design, site preparation and initial construction of the new Kaumana campus. An Environmental Assessment, prepared by Wil Chee – Planning and Environmental, has been finalized and approved. The project has received a Finding of No Significant Impact.

Total estimated cost for Phase I of the new campus is approximately \$12 million. The plan CBESS uses on the construction of essential inside and outside learning areas is consistent with Connections' mission and vision for project based learning, S.T.E.M., and the role of the campus as a K-12 learning center for schools, teachers, students and the overall community on the Big Island.

The campus will seek at least a Silver LEED (Leadership in Energy and Environmental Design) Green

Building Rating System. Alternative and sustainable energy sources, as well as sustainable strategies and technology for energy and water use, would be integrated wherever feasible. Preliminary conceptual plans include temperature control through building orientation to regulate temperatures; air movement by constructing buildings to maximize natural air movement for cross-ventilation; lighting using clerestory windows; energy production through use of high-efficiency, unobtrusive, photovoltaic laminates; rainwater collection; and waterless urinals and low/dual flush toilets.

Connections has entered into a 65 year lease with the Department of Land and Natural Resources to construct and operate its K-12 programs and related facilities. The school will be working with CBESS to acquire funding to build the new facilities. Specifically, The Foundation's project will involve obtaining grading and building permits, coordinating final bid pricing and securing a construction contract, site preparation work and construction.

CBESS has already developed a detailed strategic fundraising and marketing plan, and is in the process of soliciting funds for completion of the entire project.

3. The public purpose and need to be served;

Hawai'i's 32 Public Charter Schools, 14 of which are on the Big Island, serve as an important alternative and choice for Hawai'i's parents and students. Charter schools are public schools, with public funding, public employees covered by Hawai'i collective bargaining law (HRS Chapter 89), and cannot charge tuition. Charter schools are bound by the same Statewide academic standards, and take the same state-developed tests as public Department of Education Schools. With greater flexibility in governance and curriculum, schools such as Connections Public Charter School have had the freedom to innovate and create applied learning models that contribute to the movement for meaningful reform and innovations throughout Hawai'i's public school system.

The choice of an alternative, hands-on, S.T.E.M. related education on the Hilo side of the Big Island is clearly in the public interest to preserve and expand this alternative for the parents, students and community.

4. Describe the target population to be served; and

Connections' current K-12 enrollment is 350. CPCS serves an ethnically and economically diverse population. Ethnically the 2012-2013 student population is as follows in descending order: 44% Native Hawai'ian (or Other Pacific Islander), 38% White (including Portuguese), 11% Asian, 3% American Indian, 2% African American, and 2% Hispanic.

Connections currently has about 55 students receiving special education services under the Individuals with Disabilities in Education Act (IDEA), in grades kindergarten through grade 12, and six students receiving 504 accommodations. Under an inclusion model the school has adopted, all IDEA students are expected to participate fully with their regular education peers with modifications and accommodations as outlined in their Individualized Education Plan (IEP). The school also has a growing English Language Learner (ELL) population. While they currently represent a small portion of the population, accommodations are being made to support these students in full inclusion classrooms. The 12 identified ELL students are in grades K-9. Their classroom teachers and a literacy coordinator provide direct assistance or classroom support as needed.

The new Kaumana Campus will not only serve the current student population, but also provide valuable

resources to the entire community. The campus will incorporate an Intergenerational Learning Center, including a senior day care center with a capacity of 45 senior participants each day. Planning is under way to also consider a co-located preschool, similar to the model developed by Seagull Schools at Kapolei on Oahu.

Additional community resources may include a dormitory for summer programs, visiting students from other Hawai'i schools, the U.S. mainland, and other interested visitors from around the world. This dormitory will connect Hawai'i students and educators with the outside world through meaningful interactions and collaborations.

The new campus is also exploring the possibility of a Community Arts Center and an Agricultural Sustainability Center to promote the arts and sustainability on the Big Island.

5. Describe the geographic coverage.

The 2010 U.S. census indicated there were 43,263 people, 16,926 households, in Hilo. In these households 30.8% had children under the age of 18 living with them, 45.4% were married couples living together, 14.7% had a female householder with no husband present, and 33.6% were non-families. The average household size was 2.69 and the average family size was 3.2. Affordable housing prices have led to an enormous increase in development in the Puna district, and have made this the fastest growing area on the Big Island. The 2010 census results showed the population in Puna to be 45,326, an increase of 66% since the 2000 census. By 2030, the population of Puna is projected to grow to approximately 75,000. The U.S. Census Bureau's 2010 survey also found 18.3% of all Hawai'i County residents living in poverty and nearly one-quarter (24.5%) of Hawai'i County's children living in poverty. It is estimated that 22.1% of school-aged children, from 5 to 18 years old, lived in poverty in Hawai'i County compared to 13% statewide. Affordable housing prices have led to an enormous increase in developments in Puna, and have made this district the fastest growing area on the Big Island. In the last 20 years the population has grown by nearly 20,000 people and it is estimated that Puna will have a higher population than Hilo by 2020.

Connections attracts students from a 100 mile radius. As a school of choice, the majority of students attending Connections are from the East Hawai'i region composed primarily of families residing in Hilo and Puna.

An analysis of the most current census data on incomes indicate that the project will qualify for New Market Tax Credits.

II. Service Summary and Outcomes

The Service Summary shall include a detailed discussion of the applicant's approach to the request. The applicant shall clearly and concisely specify the results, outcomes, and measures of effectiveness from this request.

1. Describe the scope of work, tasks and responsibilities;

CBESS's campus will be managed by a Building Committee and a Capital Fundraising Cabinet. The project involves hiring a Project Manager, selecting an Architect, selection of a method of construction (Design-Bid, Design-Build, or Design-Assist), selection of a general contractors, coordination, obtaining grading

and building permits, coordinating final bid pricing and securing a construction contract. Site preparation work will include: a - Grub and Clearing; b - Site grading; c - Site infrastructure; d - Parking & Driveways; e - Landscape & Irrigation; and f – beginning construction. Because of the tight timeframe for relocation of the school, the CBESS will move as quickly as possible into the construction phase. CBESS intends to phase in the relocation of the Elementary and Middle School in subsequent PHASES.

PHASE I of the new Campus, for which Grant in Aid Capital funds are requested, will include the following.

- Planning, Design, Permitting, Pricing
- Construction site preparation
- High School for 200 students
- Administration Building, Offices
- S.T.E.M. Applied Learning Center
- A Multigenerational Learning Center (include senior day care)
- A Student Visitor Dormitory
- Maintenance and Equipment Building
- Shower and Toilets.

Objectives and tasks involved in the entire project are as follows:

Objective 1: Planning & Design

- 1a. Campus Planning
- 1b. Community outreach
- 1c. Campus Design Development
- 1d. Prepare Construction Bid Documents
- 1e. Begin Permit Process: Infrastructure/Utilities, Grading, Roadways, Preliminary Building code review, State Health Department Review

Objective 2: Permitting & Final Pricing

- 2a. Conduct Pre-Bid Meeting for Contractors
- 2b. Finalize bid Documents
- 2c. Bidding Phase: Review/Reply-Requests for Information, Review/Reply for material substitution Requests
- 2d. Bid Opening, Evaluation of Bids, Negotiate Final Pricing (if needed)
- 2e. Award and execution of Construction Contract

Objective 3: Construction Phase

- 3.1. Site work
 - 3.1a - Extension of Existing Road and Waterline
 - 3.2b - Grub and Clearing
 - 3.3c - Site grading
 - 3.4d - Site infrastructure
 - 3.5e- Parking & Driveways
 - 3.6f - Landscape & Irrigation
- 3.2. Building Construction
 - 3.2a – High School Classroom Buildings
 - 3.2b – S.T.E.M. Learning Center
 - 3.2c – Multigenerational Learning Center

3.2d – Student Visitor Dorm
3.2e – Administration Building & Faculty Offices

Specifically, CBESS' Chapter 42 Capital project will involve obtaining grading and building permits, coordinating final bid pricing and securing a construction contract. Site preparation work will include: a - Grub and Clearing; b - Site grading; c - Site infrastructure; d - Parking & Driveways; e - Landscape & Irrigation; f – initial construction.

Contractor:

The interim Project Manager, Michael Gangloff, is a licensed general contractor and will be overseeing the project.

The CBESS Board, Consultants, Project Manager and Capital Campaign Cabinet has therefore proposed the following scope of work for the Campus project:

- Form a collaborative team of professionals to develop a preliminary budget and comprehensive master schedule.
- Prepare project requests for proposal for public dissemination and bid.
- Provide assistance in reviewing and analyzing all recipient bids from prospective sub-contractors.
- Ensure that design is both aesthetically successful and duly responsive to project goals.
- Coordinate a technology implementation strategy with construction plan optimum current and future performance.
- Assure that all sub-contractors and other participants understand fully the project's design and purpose.
- Monitor all progress to anticipate difficulties, resolve issues and ensure that project adheres to schedule.
- Assure that work site meets all requisite OSHA and DLIR standards for a safe work environment.
- Coordinate final stages of construction, including punch lists and certificate of occupancy.

2. Provide a projected annual timeline for accomplishing the results or outcomes of the service;

General Timeline:

Board Decision to Commit to Campaign: Completed

Initial Design and Environmental Studies: Completed

Marketing and Feasibility Study: Completed

Property search and location: Completed

Approval of Long Term Lease with BLNR: Completed

Selection of Building Manager: Completed

Selection of Architect: Completed

Fundraising and Financing: November 2012 – November 2013

Final Design and Planning: May 2013 – May 2014

Permitting: August 2013 – December 2013

3. Describe its quality assurance and evaluation plans for the request. Specify how the applicant plans to monitor, evaluate, and improve their results; and

CBESS' Board, as well as Connections' Local School Board have established a Capital Campaign Cabinet, CBESS has adopted its own procurement code, based on key features of the State Procurement Code. A CBESS Building and Construction Committee will review the proposals and make final recommendations to the board regarding the selection of the general and subcontractors and to provide oversight of all phases and aspects of the project. Connections' executive staff will meet regularly with general contractor to keep abreast of progress, and ensure that any difficulties, both anticipated and unanticipated, will be resolved optimally to assure that project continues on schedule.

The design team by contract will act as the owner's agent to 1) review the progress of construction, 2) review the quality of construction, 3) process clarification requests and product submittals, 4) approve contractor payment requests, 5) provide final inspection.

- 4. List the measure(s) of effectiveness that will be reported to the State agency through which grant funds are appropriated (the expending agency). The measure(s) will provide a standard and objective way for the State to assess the program's achievement or accomplishment. Please note that if the level of appropriation differs from the amount included in this application that the measure(s) of effectiveness will need to be updated and transmitted to the expending agency.

Success and achievement will be measured substantively by CBESS's ability to adhere to the prospective timeline regarding the fundraising, site preparation, and construction of PHASE I. The Marketing and Feasibility Study, prepared by Myerberg Shain and Associates (MSA) has laid out a detailed timeline for fundraising and project implementation.

III. Financial

Budget

- 1. The applicant shall submit a budget utilizing the enclosed budget forms as applicable, to detail the cost of the request.

Please see information provided on all attached pages, pursuant to legislative directive.

- 2. The applicant shall provide its anticipated quarterly funding requests for the fiscal year 2013-2014.

Quarter 1	Quarter 2	Quarter 3	Quarter 4	Total Grant
\$2,500,000				\$2,500,000

- 3. The applicant shall provide a listing of all other sources of funding that they are seeking for fiscal year 2014.

CBESS has commenced an ambitious but achievable capital campaign to raise funds for the new school campus. A Marketing and Feasibility Study has been prepared which includes a detailed strategic fundraising plan which includes use of the innovative New Market Tax Credits. The Project qualifies for these credits. CBESS and Connections Public Charter School have already invested substantial sums for preliminary environmental studies, preliminary design, and successful efforts to secure a long term lease from the Hawai'i Board of Natural Resources.

Requests for capital grant funding will be made to:

- The State of Hawai'i
- Federal Agencies
- Private Organizations and Foundations
- Individual Gifts
- New Market Tax Credits

IV. Experience and Capability

A. Necessary Skills and Experience

The applicant shall demonstrate that it has the necessary skills, abilities, knowledge of, and experience relating to the request. State your experience and appropriateness for providing the service proposed in this application. The applicant shall also provide a listing of verifiable experience of related projects or contracts for the most recent three years that are pertinent to the request.

CBESS has retained the services of an experienced fundraising firm, The Shain Group, which has long and successful record raising capital funds for nonprofit organizations in Hawai'i and on the U.S. Mainland.

CBESS has also selected an experienced Project Manager and Chair of the Capital Fundraising Campaign Cabinet.

Mr. John Thatcher and his administrative team continue to provide experienced support for the effort, building on their involvement in the securing of innovative financing to purchase the Kress Building in Hilo. Charter school administrators are routinely required to provide fiscal and administrative oversight of all aspects of school governance, including facilities leases, loans, and maintenance.

CAPITAL CAMPAIGN EXPERIENCE:

CBESS will select a permanent Project Manager who will review the proposals and make final recommendations to the board regarding the selection of the contractors and to provide oversight of all phases and aspects of the project. The Project Manager will need to be familiar with labor

negotiations in Hawai'i and managing projects of millions of dollars on a routine basis.

CBESS has utilized the professional planning services of Wil Chee, which has been responsible for preparation of the environmental studies leading up to final approval by the Board of Land and Natural Resources. Urban Works Architecture has also provided services as needed in the conceptual development.

In addition, CBESS has retained the services of The Shain Group for marketing, branding, training and fundraising for this project.

B. Facilities

The applicant shall provide a description of its facilities and demonstrate its adequacy in relation to the request. If facilities are not presently available, describe plans to secure facilities. Also describe how the facilities meet ADA requirements, as applicable.

CBESS is requesting a \$2,500,000 capital grant (21% of the total PHASE I cost) from the State of Hawai'i to assist in the immediate implementation of planning, design, site preparation and initial construction of the new campus located on 72 acres in the Kaumana area above Hilo. Total estimated cost for all phases of the campus project is approximately \$30 million. An important element for the total financing package will be the use of innovative New Market Tax Credits. The CBESS plan is for construction of essential inside and outside learning areas consistent with Connections' mission and vision for project based learning, Science, Technology, Engineering and Math (S.T.E.M.), and the role of the campus as a K-12 learning center for schools, teachers, students and the community.

CBESS will build a state of the art model sustainable green school, utilizing all the natural resources available to create a healthy environment conducive to learning while saving energy, resources and money. LEED certification; zero waste; electricity production using solar, water use reduction, and a model operations and maintenance program demonstrating Best Practices for controlling the carbon footprint and integration of sustainability into the curricula.

The school has entered into a 65 year lease with DLNR and has asked CBESS to fund and construct a campus for the Connections Public Charter School K-12 programs. Specifically, PHASE I of the project will involve obtaining grading and building permits, coordinating final bid pricing and securing a construction contract, site preparation work and construction.

The estimated total cost for PHASE I is approximately \$12 million. CBESS has already developed a detailed strategic fundraising and marketing plan, and is in the process of soliciting funds for completion of the entire project.

V. Personnel: Project Organization and Staffing

A. Proposed Staffing, Staff Qualifications, Supervision and Training

The applicant shall describe the proposed staffing pattern and proposed service

capacity appropriate for the viability of the request. The applicant shall provide the qualifications and experience of personnel for the request and shall describe its ability to supervise, train and provide administrative direction relative to the request.

Connections is governed by a Governing Board, in partnership with the CBESS Board of Directors. The powers and duties of the Governing Board are provided by law, specifically:

"Governing board" means the independent board of a public charter school that is party to the charter contract with the authorizer that:

- (1) Is responsible for the financial, organizational, and academic viability of the charter school and implementation of the charter;**
- (2) Possesses the independent authority to determine the organization and management of the school, the curriculum, and virtual education;**
- (3) Has the power to negotiate supplemental collective bargaining agreements with exclusive representatives of their employees and is considered the employer of charter school employees for purposes of chapters 76, 78, and 89; and**
- (4) Ensures compliance with applicable state and federal laws.**

The Governing board's membership includes representation from the school's staff, parents, and members of the community. This membership ensures that a wide range of perspectives and expertise is brought to bear on the governance and management of the school. The Governing board has authority to select the principal.

It is relevant to note that charter schools in Hawai'i receive their funds in lump sum increments, based on an annual per pupil legislative allocation that is multiplied by the number of students enrolled. The school administration is responsible for annual audits, meeting State academic standards, securing facilities, and a wide variety of sophisticated accounting and accountability rules. Thus, the leadership for the proposed Capital project is prepared to exercise appropriate fiscal and administrative oversight of the project.

These two governing bodies have routinely managed their financial resources to secure and maintain a school facility. The responsibilities for management of the per pupil allocation to a charter school is much more akin to the management of a nonprofit organization than a traditional public school.

In 2006 CBESS secured a low interest loan from the Raza Development Fund to purchase the iconic Kress Building in Hilo. This is currently the location of the Middle and Elementary schools. Connections has moved forward in its plans by retaining the services of planning and architectural firms to prepare the Environmental Assessment and an experienced consultant to prepare a marketing and feasibility study and raise funds for the project.

To enhance the professionalism of the current leadership team, a Building Committee has been selected to govern and manage the project. The Committee includes:

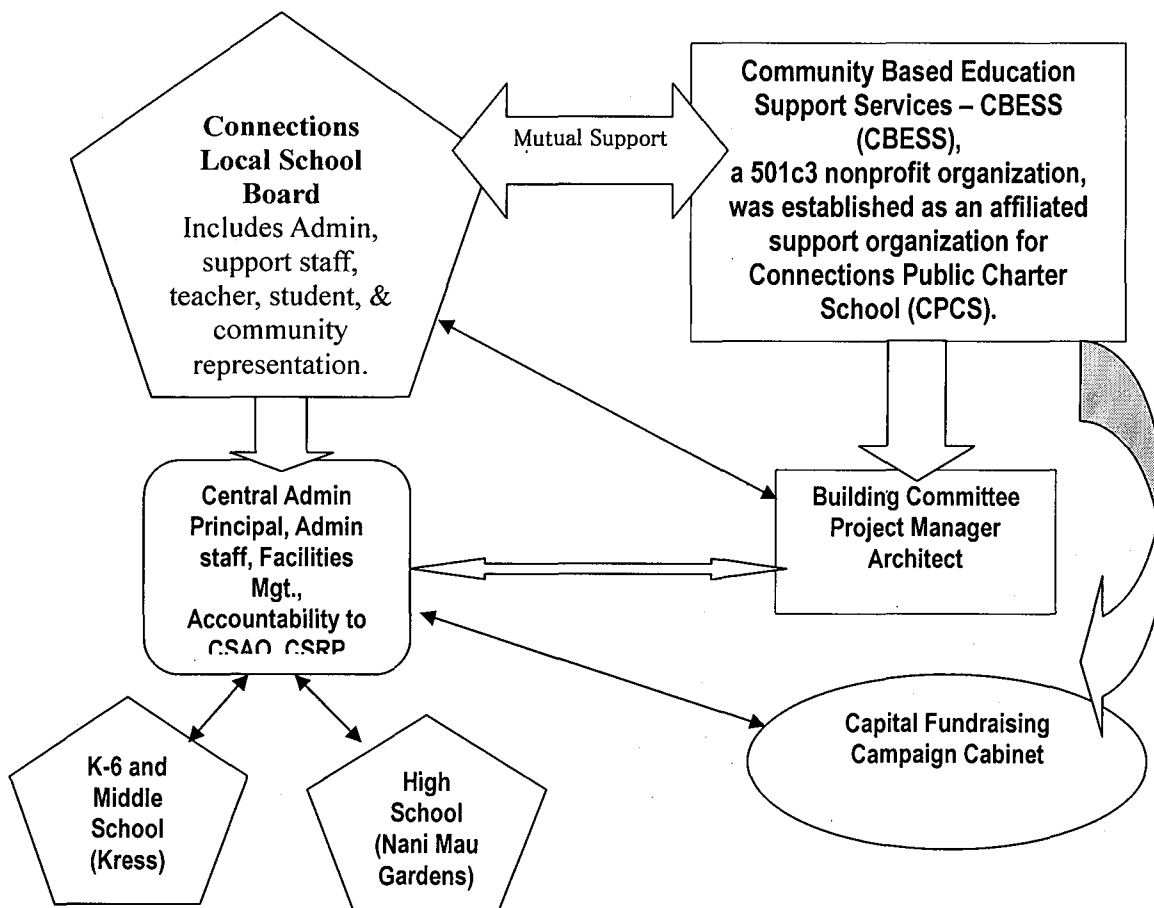
- Ms. Joan Derbyshire – Chair of the Fundraising Cabinet
- Mr. John Thatcher – Principal of Connection
- Mr. Michael R. Gangloff, interim Project Manager - President of MIRA Image Construction Contractors

A Capital Fundraising Cabinet has also been recruited, chaired by Ms. Joan Derbyshire, and supported by The Shain Group, who also prepared the Marketing and Feasibility Study. The Cabinet includes

professionals with general expertise as well as strong ties with both Hilo and Honolulu.

B. Organization Chart

The applicant shall illustrate the position of each staff and line of responsibility/supervision. If the request is part of a large, multi-purpose organization, include an organizational chart that illustrates the placement of this request.



VI. Other

A. Litigation

The applicant shall disclose any pending litigation to which they are a party, including the disclosure of any outstanding judgment. If applicable, please explain.

There is no litigation pending.

B. Licensure or Accreditation

Specify any special qualifications, including but not limited to licensure or accreditation that applicant possesses relevant to this request.

Connections has a charter received from the State Board of Education.

BUDGET REQUEST BY SOURCE OF FUNDS
(Period: July 1, 2013 to June 30, 2014)

Applicant: Community Based Education Support Services

BUDGET CATEGORIES	Total State Funds Requested (a)	Federal Funds (b)	Prospective Fundraising (c)	New Market Tax Credits (d)
A. PERSONNEL COST				
1. Salaries				
2. Payroll Taxes & Assessments				
3. Fringe Benefits				
TOTAL PERSONNEL COST				
B. OTHER CURRENT EXPENSES				
1. Airfare, Inter-Island				
2. Insurance				
3. Lease/Rental of Equipment				
4. Lease/Rental of Space				
5. Staff Training				
6. Supplies				
7. Telecommunication				
8. Utilities				
9. Planning & Design		43,556	250,000	
10. Construction - Site Prep & Grading	2,500,000	1,748,638	751,362	
11. Construction - Administrative Bldgs.			258,000	795,000
12. Construction - Dormitories				1,239,000
13. Construction - Classroom Bldgs.				1,137,500
14. Construction - Pre-School & Daycare				414,750
15. Specifications & Engineering		207,806		
16. Utilities Infrastructure			1,000,000	
17. Furnishings & Equipment			654,388	
18. Ancillary Development Costs			1,000,000	
19				
20				
TOTAL OTHER CURRENT EXPENSES	2,500,000	2,000,000	3,913,750	3,586,250
C. EQUIPMENT PURCHASES				
D. MOTOR VEHICLE PURCHASES				
E. CAPITAL				
TOTAL (A+B+C+D+E)	#VALUE!	#VALUE!	#VALUE!	#VALUE!
SOURCES OF FUNDING		Budget Prepared By:		
(a) Total State Funds Requested	2,500,000	John Thatcher	(808) 895-6856	
(b) Federal Funds	2,000,000	Name (Please type or print)	Phone	
(c) Prospective Fundraising	3,913,750		1-30-2013	
(d) New Market Tax Credits	3,586,250		Date	
TOTAL BUDGET	12,000,000	Name and Title (Please type or print)		

BUDGET JUSTIFICATION PERSONNEL - SALARIES AND WAGES

Applicant: Community Based Education Support Services

Period: July 1, 2013 to June 30, 2014

N.A.

POSITION TITLE	FULL TIME EQUIVALENT	ANNUAL SALARY A	% OF TIME ALLOCATED TO GRANT REQUEST B	TOTAL STATE FUNDS REQUESTED (A x B)
				\$ -
				\$ -
				\$ -
				\$ -
				\$ -
				\$ -
				\$ -
				\$ -
				\$ -
				\$ -
				\$ -
				\$ -
				\$ -
				\$ -
				\$ -
TOTAL:				
JUSTIFICATION/COMMENTS:				

BUDGET JUSTIFICATION - EQUIPMENT AND MOTOR VEHICLES

Applicant: Community Based Education Support Services

Period: July 1, 2013 to June 30, 2014

DESCRIPTION EQUIPMENT	NO. OF ITEMS	COST PER ITEM	TOTAL COST	TOTAL BUDGETED
Not Applicable			\$ -	
			\$ -	
			\$ -	
			\$ -	
			\$ -	
TOTAL:				

JUSTIFICATION/COMMENTS:

DESCRIPTION OF MOTOR VEHICLE	NO. OF VEHICLES	COST PER VEHICLE	TOTAL COST	TOTAL BUDGETED
Not Applicable			\$ -	
			\$ -	
			\$ -	
			\$ -	
			\$ -	
TOTAL:				

JUSTIFICATION/COMMENTS:

**BUDGET JUSTIFICATION
CAPITAL PROJECT DETAILS**

Applicant: Community Based Education Support Services

Period: July 1, 2013 to June 30, 2014

FUNDING AMOUNT REQUESTED					
TOTAL PROJECT COST	ALL SOURCES OF FUNDS RECEIVED IN PRIOR YEARS		STATE FUNDS REQUESTED	OTHER SOURCES OF FUNDS REQUESTED	FUNDING RECEIVED OR ANTICIPATED TO BE RECEIVED
	FY: 2011-2012	FY: 2012-2013	FY:2013-2014	FY:2013-2014	FY:2014-2015
PLANS					
LAND ACQUISITION					
DESIGN					
CONSTRUCTION			2500000		
EQUIPMENT					
TOTAL:			2,500,000		
JUSTIFICATION/COMMENTS:					
CBESS new campus construction.					

**BUDGET JUSTIFICATION
CAPITAL PROJECT DETAILS**

EQUIRED IN NG YEARS
FY:2015-2016

**DECLARATION STATEMENT OF
APPLICANTS FOR GRANTS AND SUBSIDIES PURSUANT TO
CHAPTER 42F, HAWAII REVISIED STATUTES**

The undersigned authorized representative of the applicant certifies the following:

- 1) The applicant meets and will comply with all of the following standards for the award of grants and subsidies pursuant to Section 42F-103, Hawaii Revised Statutes:
 - a) Is licensed or accredited, in accordance with federal, state, or county statutes, rules, or ordinances, to conduct the activities or provide the services for which a grant or subsidy is awarded;
 - b) Complies with all applicable federal and state laws prohibiting discrimination against any person on the basis of race, color, national origin, religion, creed, sex, age, sexual orientation, or disability;
 - c) Agrees not to use state funds for entertainment or lobbying activities; and
 - d) Allows the state agency to which funds for the grant or subsidy were appropriated for expenditure, legislative committees and their staff, and the auditor full access to their records, reports, files, and other related documents and information for purposes of monitoring, measuring the effectiveness, and ensuring the proper expenditure of the grant or subsidy.

- 2) The applicant meets the following requirements pursuant to Section 42F-103, Hawaii Revised Statutes:
 - a) Is incorporated under the laws of the State; and
 - b) Has bylaws or policies that describe the manner in which the activities or services for which a grant or subsidy is awarded shall be conducted or provided.

- 3) If the applicant is a non-profit organization, it meets the following requirements pursuant to Section 42F-103, Hawaii Revised Statutes:
 - a) Is determined and designated to be a non-profit organization by the Internal Revenue Service; and
 - b) Has a governing board whose members have no material conflict of interest and serve without compensation.

Pursuant to Section 42F-103, Hawaii Revised Statutes, for grants or subsidies used for the acquisition of land, when the organization discontinues the activities or services on the land acquired for which the grant or subsidy was awarded and disposes of the land in fee simple or by lease, the organization shall negotiate with the expending agency for a lump sum or installment repayment to the State of the amount of the grant or subsidy used for the acquisition of the land.

Further, the undersigned authorized representative certifies that this statement is true and correct to the best of the applicant's knowledge.

Community Based Education Support Services

(Typed Name of Individual or Organization)



(Typed Name)

1-30-2013
(Date)

Director
(Title)