

Date: 02/23/2012

Committee: Senate Ways and Means

Department: Education

Person Testifying: Kathryn S. Matayoshi, Superintendent of Education

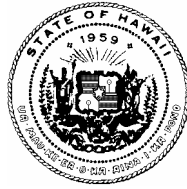
Title of Bill: SB 2545,SD1 (sscr2004) Relating to Education

Purpose of Bill: Establishes the executive office on early learning. Establishes the early learning advisory board to replace the early learning council. Repeals junior kindergarten programs at the end of the 2013-2014 school year. Beginning with the 2014-2015 school year, requires students to be at least five years of age on July 31 of the school year in order to attend kindergarten. Makes an appropriation to establish the executive office on early learning.

Department's Position:

The Department of Education (Department) supports SB 2545, SD1 (sscr2004). This bill's purpose will advance quality early childhood initiatives in the State of Hawaii. Establishing the Office on Early Learning, along with the Early Learning Advisory Board, will assist and sustain planning efforts for all children in Hawaii beginning school in a safe, culturally appropriate, educationally sound, healthy, and safe condition. By revising the date for determining the eligibility of a child to attend kindergarten from December 31 to July 31, SB 2545, SD1 (sscr2004) will bring Hawaii in line with other public school systems nationally and some private schools in Hawaii.

The Department expresses its support and continuing belief that quality early education is important and welcomes the opportunity to continue working with Hawaii's early childhood partners, in both public and private settings. The Department also commits to collaboratively build the foundation for Hawaii's comprehensive early childhood system which focuses on healthy, safe, ready to learn, and engaged children and families.



STATE OF HAWAII
DEPARTMENT OF HUMAN SERVICES
P. O. Box 339
Honolulu, Hawaii 96809-0339

February 23, 2012

MEMORANDUM

TO: Honorable David Y. Ige, Chair
Senate Committee on Ways and Means

FROM: Patricia McManaman, Director

SUBJECT: **S.B. 2545, S.D.1 - RELATING TO EDUCATION**

Hearing: Thursday, February 23, 2012, 9:00 a.m.
Conference Room 211, State Capitol

PURPOSE: The purpose of S.B. 2545, S.D.1 is to establish the office of early learning, to establish the early learning advisory board to replace the early learning council, to repeal junior kindergarten program at the end of the 2013-2014 school year, to require students to be at least five years of age on July 31 beginning with the 2014-2015 school year, and to make an appropriation of \$500,000 to establish the executive office on early learning.

DEPARTMENT'S POSITION: The Department of Human Services (DHS) supports this bill and offers the following comments.

As a member of the Early Learning Council and an active participant in all issues related to improving outcomes for young children, the DHS is in support of creating an Office of Early Learning that would be dedicated to coordinating the early care and education system. Reassigning the Early Learning Council as an advisory board to the

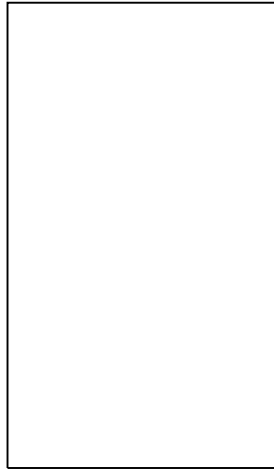
Office of Early Learning provides a clearer jurisdiction, role, and responsibility for that group.

Another aspect of the bill refers to the establishment of the Pre-plus program under the Office of Early Learning. As the DHS currently has an established Pre-plus coordinator position, we anticipate that the position would transfer over to the Office of Early Learning.

The bill also proposes the repeal of the junior kindergarten program. This is a concern to the DHS as the proposal will delay public school entry for children who are late-born five year olds. Services and programs need to be made available for these late-born children. While eligible families may be able to utilize the child care subsidies issued by the DHS to assist with the cost of tuition, the DHS will be without resources to meet the anticipated need.

In analyzing the potential cost to the DHS, we estimate that there would be about 3,068 children who would be income eligible for child care subsidies (calculation based on 5,900 late-born five-year olds of which approximately 52% on free/reduced lunch program). If there is funding for a portion of the school day appropriated to this group, then the families could apply for wrap-around funding. Oahu Head Start charges \$450 for the wrap-around time frame of 7:00 a.m. to 8:00 a.m. and noon to 5:00 p.m. Using this figure, the potential cost to DHS may be \$1.3 million per month. If there is no funding appropriated for this group, the families could apply for child care subsidies for their preschool tuition, with the maximum child care subsidy rate for an accredited preschool being \$710, and the potential cost to the DHS may be \$2.1 million per month.

Thank you for the opportunity to provide comments on this bill.



To: Senator David Ige, Chair
Senator Michelle Kidani, Vice Chair

From: Leadership Council
BeMyVoice! Hawai'i Public-will Building Campaign

Date: Thursday, February 23, 9:00 a.m.
Conference Room 211

Subject: **Senate Bill 2545 SD1 Education; Early Learning; Appropriation**

The Leadership Council of the *BeMyVoice! Hawai'i* includes individuals who have come together to support Hawaii's youngest keiki. For your information, the list with names of the Leadership Council members supporting this testimony is attached. Our Council's collective goal is that all of Hawai'i's children enter kindergarten ready to succeed and that this process begins with the availability of a four year old program for all children.

We **conditionally support** SB2545 SD1 only if a fully funded quality early learning program is in place, using the money currently appropriated for Junior Kindergarten (JK), to serve every child impacted by the proposed the termination of JK beginning with the 2014-2015 school year. Currently, there are almost 5,900 JK-eligible students in our public school. We have also seen a steady increase in the number of students not attending preschool (PS), and for many of these children, JK is their only early learning option available.

Eliminating JK without a fully-funded quality early learning program in place for these 5,900 children would be disastrous for our state, our communities, our families, and most of all our keiki. To illustrate the negative impact this bill would have on our children, the following data is provided for the DOE's Race-to-the-Top Zones of Innovation:

- Keaau-Kau-Pahoa Complex Area: there are 188 JK and 311 kindergarten (K) students.
 - 57.5% did not attend PS—equating to approximately 108 JK students
- In the Nanakuli-Waianae Complex Area, there are 283 JK and 402 K students
 - 57% did not attend PS--equating to approximately 161 JK students

It is crucial that action be taken now. Hawai'i is in a state of crisis: a child is born into poverty every five hours; a child is abused or neglected every five hours; more than 2 out of 5

BeMyVoice!Hawaii testimony: SB2545 SD1, Thursday, February 23, 9:00 a.m. Senate Ways and Means Committee
children enter kindergarten without PS experience; and, 1 out of 3 children are not reading at grade level by 3rd grade.

The architecture of the brain that provides a strong or weak foundation for future learning, behavior and health takes place by age five. We need to begin investing early in a child's life, when the brain is in this state of tremendous growth potential. By the time children enter kindergarten, elementary school and high school we are only *addressing* problems and no longer *preventing* them.

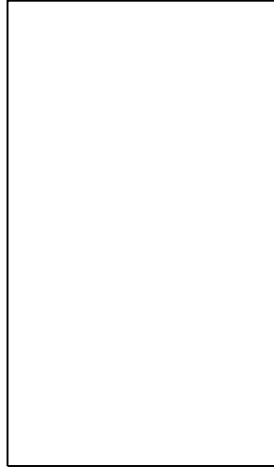
The high return on investing in children under the age of five has been well documented nationally and locally. In 2008, the Hawai'i Economic Benefits Study of early education for Hawai'i showed that for every \$1 Hawai'i invests in a quality four-year early learning program, the state will receive a return of \$4.20. This return is calculated from less spending on special education, grade retention, and future social services – such as incarceration - plus a more productive, higher paid workforce contributing positively to the state economy.

Funds currently allocated to Junior Kindergarten now must be rededicated to preschool education so that every impacted child is served. The commitment to keep those funds going to early childhood education is critical. Our children deserve an opportunity to succeed in school and in life—they cannot wait.

Mahalo for your attention.

For more information about BeMyVoice! Hawai'i, go to www.bemyvoicehawaii.org.

Encl: BeMyVoice! Hawai'i Leadership Council Members



Be My Voice Hawaii Leadership Council

Chair: Dee Jay Mailer, CEO of Kamehameha Schools

- **Al Castle – Executive Director of the Samuel N. and Mary Castle Foundation**
- **Elisabeth Chun – Executive Director, Good Beginnings Alliance**
- **Jennifer Goto Sabas – Chief of Staff, Office of Senator Daniel K. Inouye**
- **Robert Hiam - CEO, Hawai'i Medical Services Association**
- **Gary Kai – Executive Director, Hawai'i Business Roundtable**
- **Colbert Matsumoto – Chairman & CEO, Island Insurance Companies**
- **Robin Midkiff – Vice President, Atherton Family Foundation**
- **Gail Mukaihata Hannemann – CEO, Girl Scout Council of Hawai'i**
- **Kanoe Naone – CEO, INPEACE; President, Good Beginnings Alliance Board**
- **Dean Okimoto – Chairman and President, Nalo Farms**
- **Nonie Toledo – President, Nonie Toledo & Associates**
- **Jim Tollefson – Chairman & CEO – Chamber of Commerce of Hawaii**
- **Arthur Ushijima – CEO, Queen's Hospital**
- **Allen Uyeda – President & CEO, First Insurance Company of Hawaii**
- **Keith Vieira – Senior Vice President and Director of Operations, Starwood Hotels & Resorts in Hawai'i and French Polynesia**
- **Robert Wo, Jr. – President, C.S. Wo & Sons, Ltd.**



1806 So. King Street □ Suite 30 □ Honolulu, HI 96826 □ (808)942-4708 □ FAX (808)955-2739
□ haeyc@hawaiiayc.org

Senator David Y. Ige, Chair
Senator Michelle N. Kidani, Vice Chair
COMMITTEE ON WAYS AND MEANS

From: Katherine Murphy, Executive Director
Hawaii Association for the Education of Young Children (HAEYC)

Date: **Thursday, February 23, 2012**

Subject: **SB 2545, SD1, Relating to Education**

HAEYC supports the intent of SB 2545, SD1 - to build upon the work of the Early Learning Council by appropriating resources and institutionalizing a system of early learning that provides the opportunity for all children and their families to chose and participate in quality early learning services and programs that foster optimal development and contribute to future success.

HAEYC will continue to be a positive contributor to the state's transition to a true, comprehensive public/private early learning system. Our volunteers and staff would be happy to provide you more information to facilitate your decision-making. Please contact us at 942-4708 or haeyc@hawaiiayc.org.

HAEYC represents nearly 1,000 members who are early childhood development and educational professionals across the state.

HAEYC's mission is to promote, support, and expand quality and professionalism in early childhood programs and services for Hawaii's children (0-8) and their families.

Katherine E. Murphy
Executive Director
HAEYC

841 Bishop St., Suite 301
Honolulu, Hawaii 96813



Telephone: 808 926-1530
Contact@HEECoalition.org

Senate Committee on Ways and Means
Senator David Ige, Chair
Senator Michelle Kidani, Vice Chair

February 21, 2012

Dear Chair Ige, Vice Chair Kidani and Committee Members:

This testimony is submitted in strong opposition of **the sections in SB254 that would terminate Junior Kindergarten (JK).**

The Hui for Excellence in Education (HE'E) is a diverse coalition of over 30 parent and community organizations dedicated to improving student achievement by increasing family and community engagement and partnerships in our schools. Our member list is attached.

Since 1943, all children who turn 5 years of age during a calendar year have been eligible to attend kindergarten. These above mentioned bills would end this entitlement for a public education for our late-born children (turn 5 years of age between August 1 and December 31) that has been in existence for the last 69 years.

Junior Kindergarten cannot be ended unless there is a guaranteed-in-law, state-funded, quality early learning program that will be a replacement educational program for all late-born children.

Also of serious concern is that the lack of focused communication with parents of young children on the impact of the proposed termination. Parents will most likely find out that the program has ended when they go to enroll their child in 2014. This situation will also create much confusion and hardship for families and students.

Finally, parents of late-born children who will turn 3 years of age between August 1 - December 31, 2012 will have to make one of the following decisions if JK is terminated in SY2014-2015:

- Pay for an extra year of preschool (PS), family child care, or other option for SY2014-2015
- Make the hard decision to not enroll their 2 year old in PS in the 2012-13 school year because they cannot afford three years of PS
- Forego PS and wait until the child is nearly 6 to enter Kindergarten

Please rethink the proposal to terminate Junior Kindergarten for our late-born children without any guaranteed public option in place that has been communicated to and accepted by the community.

We would be glad to work with the legislature, department and unions to make this effort successful.

Thank you for the opportunity to testify and for your consideration.

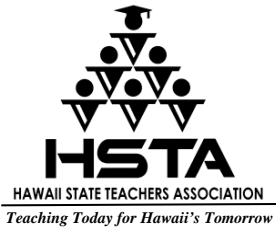
Our support of this bill represents a 75% consensus or more of our membership.

Sincerely,

Cheri Nakamura
HE'E Coalition Director



*Academy 21
After-School All-Stars Hawaii
*Castle Complex Community Council
Center for Civic Education
*DOE Windward District
*Faith Action for Community Equity
Fresh Leadership LLC
Girl Scouts Hawaii
*Good Beginnings Alliance
Harold K.L. Castle Foundation
Hawai'i Athletic League of Scholars
*Hawai'i Charter School Network
*Hawai'i Education Matters
*Hawai'i Nutrition and Physical Activity Coalition
Hawai'i State Student Council
Hawai'i State Teachers Association
Hawai'i P-20
Hawai'i 3Rs
It's All About Kids
*INPEACE
Joint Venture Education Forum
Kamehameha Schools
*Kanu Hawai'i
Kupu A'e
*Leaders for the Next Generation
McREL's Pacific Center for Changing the Odds
*Our Public School
*Pacific Resources for Education and Learning
*Parents and Children Together
*Parents for Public Schools Hawai'i
Punahou School PUEO Program
The Learning Coalition
US PACOM
University of Hawai'i College of Education
Voting Members (*)



1200 Ala Kapuna Street λ Honolulu, Hawaii 96819
Tel: (808) 833-2711 λ Fax: (808) 839-7106 λ Web: www.hsta.org

Wil Okabe
President

Karolyn Mossman
Vice President

Joan Kamila Lewis
Secretary-Treasurer

Alvin Nagasako
Executive Director

SENATE COMMITTEE ON WAYS AND MEANS

RE: SB 2545, SD1 -- RELATING TO EDUCATION.

THURSDAY; FEBRUARY 23, 2012

WIL OKABE, PRESIDENT
HAWAII STATE TEACHERS ASSOCIATION

Chair Ige and Members of the Committee:

The Hawaii State Teachers Association is offering comments on the current form of SB 2545, SD1, relating to education, which establishes an executive office on early learning and replaces the early learning council with an early learning advisory board, among other items.

Specifically, HSTA opposes the constitution of the early learning advisory board currently outlined in this bill. We respectfully request that the following amendment be made: **§302L-B Early learning advisory board, subsection (b) 16. A licensed public school kindergarten teacher currently employed by the Department of Education.** Additionally, we request that subsection (c) be amended to include the following: (10) The public school kindergarten teacher shall serve a two-year term.

We firmly believe that the advisory board would benefit from a teacher's perspective on what children need to achieve classroom success. A teacher's vision encompasses operational perspectives on the day-to-day experience young students can expect as they matriculate into our state's schools, including relational and inter-personal experiences with other students. An experienced teacher may also provide often overlooked insight into the importance of parent-teacher relationships and home involvement in a child's early learning development. Additionally, a teacher can provide information on age-appropriate expectations for kindergarteners, including psycho-social development, which will assist the board in crafting policies that comport with the demands of a twenty-first century classroom. Without this voice, the advisory board is likely to miss crucial details about the complex interaction between stakeholders that determines whether or not a child will succeed once they enter the public school system.

In our view, early education programs should be provided through public schools. We will continue to support any federal and state proposals to fund, develop, and organize the implementation of such programs, as we believe that, whenever possible, early childhood programs should be staffed by personnel trained and licensed in early childhood education and subject to standards set by the Hawaii Teacher Standards Board.

Again, we urge you to add a classroom teacher to the Early Learning Advisory Board.

Thank you for the opportunity to testify.

To: Senator David Ige, Chair
Senator Michelle Kidani, Vice Chair

From: Elisabeth Chun, Executive Director
Good Beginnings Alliance

Date: Friday, February 3, 2012, 2:00 pm
Conference Room 309

Subject: **SB2545 SD1: Education; Early Learning; Appropriation**

The Good Beginnings Alliance is a policy and advocacy organization focused on Hawaii's youngest children and their families. We strive to ensure a nurturing, safe and healthy development for all children from pre-birth to age eight. The following information is provided to help you in your decision-making process:

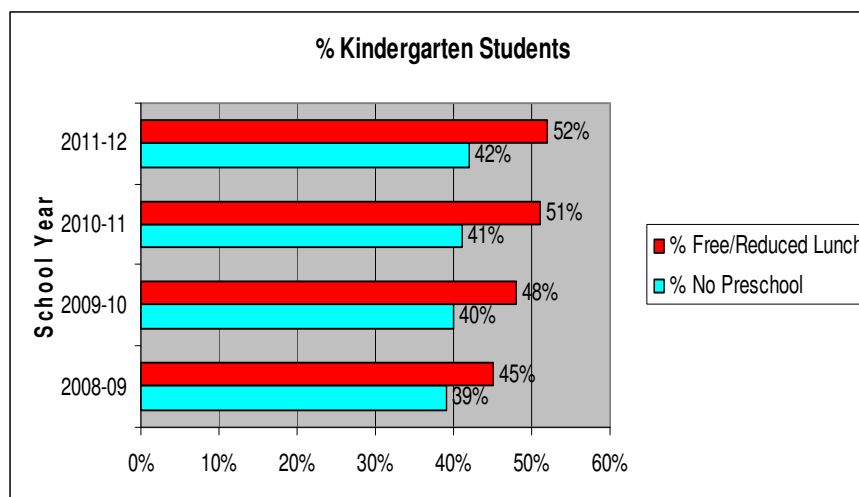
- There are almost **5,900 late-born 5-year-olds** in Junior Kindergarten (JK) or Kindergarten (K) in our public schools this year
- The attached spreadsheet, sorted by school complexes and containing separate tabs for each committee member, shows the JK numbers, preschool (PS) attendance, free or reduced lunch participation, and third grade reading scores for every elementary school.
 - It also includes separate tabs for school complexes in your individual districts
 - Terminating JK in 2014 would leave many of the **5,900 late-born children without any early learning option.**
 - In the **Pearl City and Aiea Complexes**, there are **371 late-born students**; if this bill is passed into law without a quality replacement program, 300+ late-born children may not have an early learning option in 2014-2015 school year
- **A replacement 4-year-old program commencing at the start of the 2014-2015 school year will be very important to replace JK.**
- Many states achieved great success in developing a quality early childhood system after establishing an **Executive Office on Early Learning.**
 - This office provides the authority/accountability to convene different stakeholders of an early childhood system and bring a state early childhood plan to fruition.
 - This office needs the funding and mandate to **create an implementation plan with phased-in timeline and projected funding needs for a 4-year-old early learning** program.
 - Other states have also established an **early learning advisory board/council** that advises the Executive Office of Early Learning.

- **Pre-Plus** programs serve as prime locations for inclusion settings where children with special needs learn side-by-side other children.
 - The opportunity to increase the coordination between these settings and the expansion of these learning opportunities for all 4-year old children is great.

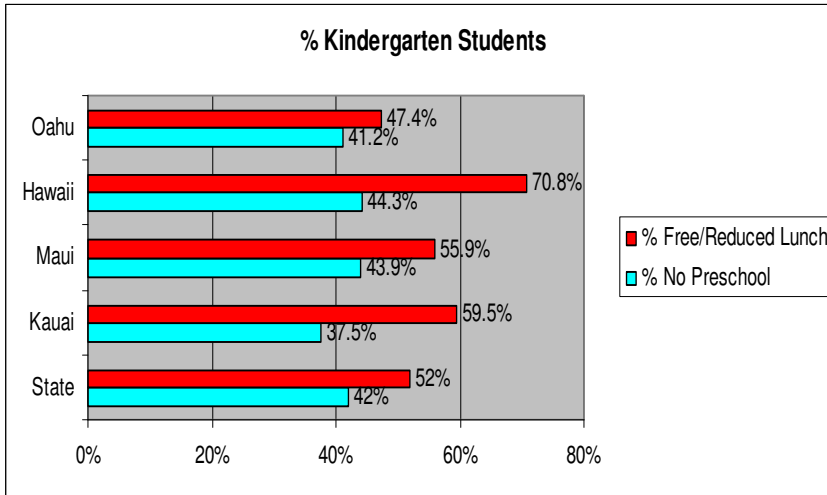
Hawai‘i’s State School Readiness Assessment continues to show us the need for a 4-year old program in Hawai‘i. The 2011 data once again shows the increasing number of children entering kindergarten without first attending preschool as well as the growing number of children who qualify for free and reduced lunch. Specifically, more than **4 out of 10 (42 percent)** of the current kindergarten students in our public schools **did not attend preschool**, an increase from 39 percent in 2008. Additionally, more than 1 out of 2 kindergarten students are from low income families and receiving free or reduced lunch—an increase **from 48% in 2009 to 52% in 2011**. We clearly believe these two figures correlate to our state’s economic challenges, and this awareness heightens the urgency to obtain public and private investments in quality ECE.



HSSRA - State

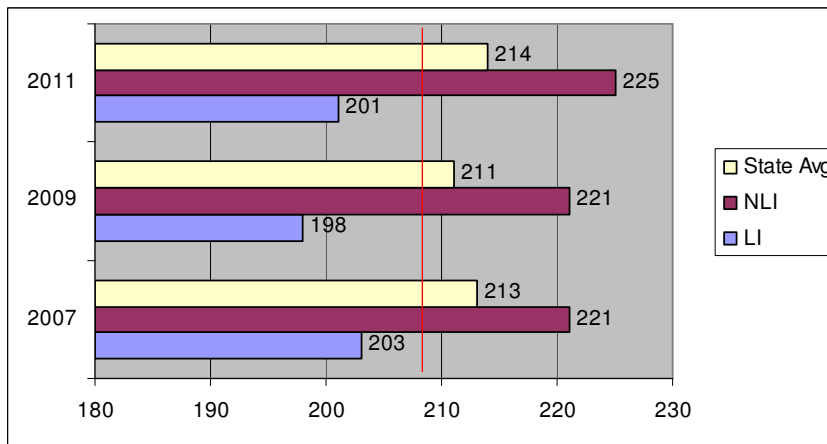


Counties – No PS & Lunch %



We have also charted the National Assessment of Educational Progress (NAEP) reading scores for Hawaii's fourth grade students for the last 3 NAEPs. Nicknamed the "Nation's Report Card," it assesses a random sampling of Hawaii's public school students. In 2011, this equated to about 6,500 students statewide. For the last three NAEPs, Hawaii's overall reading score for fourth grade reading, our low-income students are still scoring well below the Basic Level.

HI NAEP 4th Grd Rdg – Low Income Vs. Non Low Income



Basic Level Score - 208

We urge you to strongly consider the information we have provided as well as the demographic data in the attached spreadsheet. Our young children are entering kindergarten with less

attendance in PS and with increasingly less ability of families to afford PS. Reading scores show that in low income areas - where there is less PS attendance - children are not increasing their ability to read at grade level.

We must recognize that early learning experiences do affect later success of our children now and in the future. Expanding -- not decreasing -- the opportunities for quality early learning is imperative for Hawaii.

Mahalo for your consideration and your support. For more information contact: Good Beginnings Alliance; phone: 531-5502; lchun@goodbeginnings.org

Hawaii State School Readiness Assessment - 2011-12 School Year (SY)								DOE SY 2011-12 Kindergarten		Hawaii State Assessment SY2010-11	
School	Complex	Year	Title 1	% Lunch	% SPED	% ESL	% PS	Date of Birth (Jan 1- Jul 31, 2006)	Date of Birth (Aug 1- Dec 31, 2006)	School	3rd Grade Reading
Pearl Ridge Elementary	Aiea	2011	FALSE	27.5%	2.2%	6.7%	79.8%	58	30	Pearl Ridge Elementary	82%
Alvah A. Scott Elementary	Aiea	2011	TRUE	48.8%	1.3%	11.3%	51.3%	51	29	Scott Elementary	76%
Waimalu Elementary	Aiea	2011	TRUE	53.1%	8.8%	20.0%	55.0%	42	37	Waimalu Elementary	70%
Aiea Elementary	Aiea	2011	TRUE	75.6%	8.7%	19.6%	28.3%	30	15	Aiea Elementary	53%
Gustave H. Webling Elementary	Aiea	2011	FALSE	31.8%	1.2%	1.2%	84.7%	47	38	Webling Elementary	76%
Wailuku Elementary	Baldwin	2011	TRUE	59.1%	4.5%	20.5%	49.4%	103	71	Wailuku Elementary	53%
Waihee Elementary	Baldwin	2011	TRUE	57.8%	3.6%	12.7%	63.0%	106	61	Waihee Elementary	69%
Holomua Elementary	Campbell	2011	FALSE	31.5%	4.1%	5.1%	53.8%	119	79	Holomua Elementary	68%
Iroquois Point Elementary	Campbell	2011	TRUE	36.8%	4.1%	5.7%	58.5%	78	51	Iroquois Point Elementary	75%
Ewa Beach Elementary	Campbell	2011	TRUE	40.0%	7.3%	8.3%	59.6%	62	47	Ewa Beach Elementary	56%
Kaimiloa Elementary	Campbell	2011	TRUE	60.7%	6.8%	13.6%	46.6%	59	30	Kaimiloa Elementary	62%
Pohakea Elementary	Campbell	2011	TRUE	61.3%	6.5%	9.1%	31.2%	44	36	Pohakea Elementary	70%
Ewa Elementary	Campbell	2011	TRUE	62.9%	3.2%	8.4%	47.1%	98	60	Ewa Elementary	55%
Keoneula Elementary	Campbell	2011	FALSE	21.6%	2.7%	8.0%	65.2%	68	48	Keoneula Elementary	66%
Kaneohe Elementary	Castle	2011	FALSE	36.8%	2.4%	2.4%	78.3%	55	27	Kaneohe Elementary	85%
Kapunahala Elementary	Castle	2011	TRUE	44.8%	2.4%	2.4%	69.4%	52	34	Kapunahala Elementary	80%
Heeia Elementary	Castle	2011	TRUE	59.7%	2.8%	2.8%	77.8%	43	31	Heeia Elementary	78%
Puohala Elementary	Castle	2011	TRUE	68.8%	9.7%	0.0%	77.4%	21	13	Puohala Elementary	57%
Benjamin Parker Elementary	Castle	2011	TRUE	79.6%	6.1%	4.1%	36.7%	35	17	Parker Elementary	74%
Kahaluu Elementary	Castle	2011	TRUE	87.2%	10.6%	2.1%	78.7%	36	14	Kahaluu Elementary	68%
Waiahole Elementary	Castle	2011	TRUE	87.5%	20.0%	0.0%	73.3%	13	3	Waiahole Elementary	0%

Ahuimanu Elementary	Castle	2011	TRUE	44.1%	6.2%	1.5%	89.2%	54	14	Ahuimanu Elementary	54%
Kapalama Elementary	Farrington	2011	TRUE	65.6%	1.5%	7.6%	62.1%	87	45	Kapalama Elementary	57%
Kalihi-waena Elementary	Farrington	2011	TRUE	71.8%	3.7%	29.6%	29.6%	53	25	Kalihi-waena Elementary	39%
Kalihi-kai Elementary	Farrington	2011	TRUE	72.2%	3.5%	47.8%	30.4%	67	44	Kalihi-kai Elementary	48%
Kalihi Elementary	Farrington	2011	TRUE	72.4%	0.0%	53.6%	35.7%	17	11	Kalihi Elementary	49%
Kalihi-uka Elementary	Farrington	2011	TRUE	75.6%	8.7%	10.9%	32.6%	25	21	Kalihi-uka Elementary	73%
Puuhale Elementary	Farrington	2011	TRUE	77.6%	2.1%	18.8%	27.1%	28	21	Puuhale Elementary	58%
Joseph J. Fern Elementary	Farrington	2011	TRUE	79.4%	0.0%	36.4%	37.9%	39	26	Fern Elementary	42%
Kaewai Elementary	Farrington	2011	TRUE	83.3%	0.0%	39.7%	39.7%	36	24	Kaewai Elementary	54%
Linapuni Elementary	Farrington	2011	TRUE	87.3%	3.7%	56.8%	66.7%	50	27	See Fern and Kalihi Waena Schools	
Hana High & Elementary	Hana	2011	TRUE	90.6%	0.0%	9.1%	78.8%	19	14	Hana High & Elementary	59%
Ernest Bowen de Silva Elementary	Hilo	2011	FALSE	36.1%	6.6%	1.6%	91.8%	38	22	de Silva Elementary	88%
Haaheo Elementary	Hilo	2011	TRUE	64.5%	3.2%	6.5%	74.2%	23	8	Haaheo Elementary	77%
Kaumana Elementary	Hilo	2011	TRUE	65.3%	6.1%	6.1%	65.3%	31	19	Kaumana Elementary	68%
Kalaniana'ole Elementary & Intermediate	Hilo	2011	TRUE	73.7%	5.3%	26.3%	26.3%	22	15	Kalaniana'ole Elementary & Intermediate	62%
Hilo Union Elementary	Hilo	2011	TRUE	85.1%	17.3%	10.7%	60.0%	45	28	Hilo Union Elementary	45%
Chiefess Kapiolani Elementary	Hilo	2011	TRUE	87.7%	8.6%	22.4%	53.4%	36	25	Kapiolani Elementary	64%
Keaukaha Elementary	Hilo	2011	TRUE	88.2%	6.0%	2.0%	56.0%	30	20	Keaukaha Elementary	57%
Honokaa Elementary	Honokaa	2011	TRUE	61.5%	1.9%	5.7%	50.9%	30	22	Honokaa Elementary	49%
Paauilo Elementary & Intermediate	Honokaa	2011	TRUE	71.4%	0.0%	14.3%	42.9%	11	3	Paauilo Elementary & Intermediate	55%
Waimea Elementary	Honokaa	2011	TRUE	77.0%	4.0%	19.0%	43.7%	88	39	Waimea Elementary	51%
Kaaawa Elementary	Kahuku	2011	TRUE	28.6%	0.0%	0.0%	76.2%	16	3	Kaaawa Elementary	71%

Sunset Beach Elementary	Kahuku	2011	FALSE	28.7%	6.5%	4.3%	72.0%	64	26	Sunset Beach Elementary	78%
Laie Elementary	Kahuku	2011	TRUE	50.5%	4.5%	6.3%	73.0%	72	39	Laie Elementary	76%
Kahuku Elementary	Kahuku	2011	TRUE	66.7%	10.0%	13.3%	63.3%	57	35	Kahuku Elementary	75%
Hauula Elementary	Kahuku	2011	TRUE	67.3%	5.8%	30.8%	71.2%	30	13	Hauula Elementary	63%
Kaelepulu Elementary	Kailua	2011	FALSE	12.5%	9.4%	3.1%	81.3%	27	3	Kaelepulu Elementary	56%
Maunawili Elementary	Kailua	2011	TRUE	50.0%	7.1%	0.0%	50.0%	34	22	Maunawili Elementary	68%
Keolu Elementary	Kailua	2011	TRUE	62.5%	20.8%	8.3%	45.8%	15	8	Keolu Elementary	69%
Waimanalo Elementary & Intermediate	Kailua	2011	TRUE	78.9%	8.6%	20.7%	62.1%	37	19	Waimanalo Elementary & Intermediate	72%
Blanche Pope Elementary	Kailua	2011	TRUE	80.4%	17.9%	2.6%	74.4%	32	13	Pope Elementary	64%
Enchanted Lake Elementary	Kailua	2011	FALSE	36.8%	10.2%	3.4%	84.1%	54	35	Enchanted Lake Elementary	96%
Aliiolani Elementary	Kaimuki	2011	TRUE	44.1%	9.4%	28.1%	75.0%	23	9	Aliiolani Elementary	86%
King William Lunalilo Elementary	Kaimuki	2011	TRUE	54.2%	1.4%	47.2%	63.9%	43	33	Lunalilo Elementary	66%
Ala Wai Elementary	Kaimuki	2011	TRUE	60.7%	2.4%	48.8%	52.4%	43	40	Ala Wai Elementary	71%
Thomas Jefferson Elementary	Kaimuki	2011	TRUE	64.0%	8.8%	33.8%	38.2%	48	25	Jefferson Elementary	67%
Prince Jonah Kuhio Elementary	Kaimuki	2011	TRUE	75.9%	6.1%	51.2%	41.5%	57	27	Kuhio Elementary	81%
Palolo Elementary	Kaimuki	2011	TRUE	88.6%	6.7%	46.7%	48.9%	27	18	Palolo Elementary	67%
Hokulani Elementary	Kaimuki	2011	FALSE	15.6%	0.0%	26.2%	96.9%	37	28	Hokulani Elementary	94%
Hahaione Elementary	Kaiser	2011	FALSE	5.6%	2.2%	3.4%	93.3%	53	37	Hahaione Elementary	82%
Aina Haina Elementary	Kaiser	2011	FALSE	15.3%	0.9%	7.1%	96.4%	75	42	Aina Haina Elementary	84%
Koko Head Elementary	Kaiser	2011	FALSE	19.0%	1.7%	10.3%	91.4%	35	22	Koko Head Elementary	84%
Kamiloiki Elementary	Kaiser	2011	FALSE	25.3%	6.5%	5.2%	76.6%	52	22	Kamiloiki Elementary	77%
Aikahi Elementary	Kalaheo	2011	FALSE	21.0%	5.8%	2.9%	76.7%	91	13	Aikahi Elementary	82%
Kainalu Elementary	Kalaheo	2011	TRUE	43.0%	7.5%	12.5%	72.5%	49	31	Kainalu Elementary	78%
Kailua Elementary	Kalaheo	2011	TRUE	57.1%	11.1%	14.3%	44.4%	45	17	Kailua Elementary	69%
Mokapu Elementary	Kalaheo	2011	FALSE	33.0%	9.0%	2.4%	56.2%	136	76	Mokapu Elementary	61%

Kahala Elementary	Kalani	2011	FALSE	10.1%	1.3%	21.8%	79.5%	50	29	Kahala Elementary	90%
John H. Wilson Elementary	Kalani	2011	FALSE	15.9%	2.3%	10.2%	95.5%	61	43	Wilson Elementary	77%
Waikiki Elementary	Kalani	2011	TRUE	28.9%	4.0%	49.3%	76.0%	49	27	Waikiki Elementary	93%
King Liholiho Elementary	Kalani	2011	FALSE	29.5%	3.4%	21.6%	67.0%	59	29	Liholiho Elementary	84%
Kilauea Elementary	Kapaa	2011	TRUE	52.5%	2.5%	5.0%	65.0%	27	12	Kilauea Elementary	55%
Kapaa Elementary	Kapaa	2011	TRUE	71.2%	4.9%	9.2%	54.3%	116	67	Kapaa Elementary	50%
Hanalei Elementary	Kapaa	2011	FALSE	46.4%	1.8%	5.4%	67.9%	41	15	Hanalei Elementary	70%
Barbers Point Elementary	Kapolei	2011	TRUE	37.3%	3.2%	8.4%	57.9%	63	40	Barbers Point Elementary	65%
Kapolei Elementary	Kapolei	2011	TRUE	40.1%	3.0%	5.1%	50.5%	116	72	Kapolei Elementary	65%
Mauka Lani Elementary	Kapolei	2011	TRUE	45.4%	2.7%	2.7%	54.9%	62	57	Mauka Lani Elementary	63%
Makakilo Elementary	Kapolei	2011	TRUE	50.0%	6.1%	9.2%	51.0%	56	45	Makakilo Elementary	68%
Kau High & Pahala Elementary	Kau	2011	TRUE	80.0%	0.0%	12.5%	70.8%	17	6	Kau High & Pahala Elementary	56%
Naalehu Elementary & Intermediate	Kau	2011	TRUE	86.8%	1.5%	40.3%	31.3%	44	21	Naalehu Elementary	37%
Koloa Elementary	Kauai	2011	TRUE	48.5%	5.9%	4.4%	67.6%	44	24	Koloa Elementary	71%
King Kaumualii Elementary	Kauai	2011	TRUE	54.5%	5.7%	10.5%	73.3%	71	39	Kaumualii Elementary	50%
Elsie H. Wilcox Elementary	Kauai	2011	TRUE	64.1%	3.9%	7.2%	64.7%	96	59	Wilcox Elementary	52%
Keaau Elementary	Keaau	2011	TRUE	79.1%	5.6%	20.8%	46.4%	75	52	Keaau Elementary	63%
Mountain View Elementary	Keaau	2011	TRUE	87.6%	4.1%	4.9%	21.3%	58	49	Mountain View Elementary	34%
Holualoa Elementary	Kealakehe	2011	TRUE	40.2%	2.1%	12.5%	66.7%	67	31	Holualoa Elementary	71%
Waikoloa Elementary and Middle	Kealakehe	2011	TRUE	57.9%	7.0%	15.5%	68.3%	100	40	Waikoloa Elementary	63%
Kahakai Elementary	Kealakehe	2011	TRUE	69.9%	4.5%	29.5%	54.5%	106	48	Kahakai Elementary	54%
Kealakehe Elementary	Kealakehe	2011	TRUE	73.2%	6.8%	23.5%	52.0%	145	83	Kealakehe Elementary	64%
Kula Elementary	Kekaulike	2011	TRUE	49.4%	7.4%	2.5%	69.1%	60	23	Kula Elementary	80%
Pukalani Elementary	Kekaulike	2011	TRUE	51.1%	7.9%	6.7%	70.8%	65	25	Pukalani Elementary	81%
Haiku Elementary	Kekaulike	2011	TRUE	58.5%	5.4%	6.5%	46.2%	55	35	Haiku Elementary	84%
Makawao Elementary	Kekaulike	2011	TRUE	61.0%	3.9%	6.8%	68.0%	71	32	Makawao Elementary	65%
Paia Elementary	Kekaulike	2011	TRUE	64.8%	0.0%	0.0%	77.5%	46	26	Paia Elementary	81%

Kohala Elementary	Kohala	2011	TRUE	65.3%	2.9%	10.0%	60.0%	38	31	Kohala Elementary	58%
Konawaena Elementary	Konawaena	2011	TRUE	61.9%	3.3%	17.8%	56.7%	54	36	Konawaena Elementary	58%
Ke Kula O Ehunuikaimalino	Konawaena	2011	TRUE	81.8%	0.0%	0.0%	59.1%	14	8	Ehunuikaimalino	94%
Honaunau Elementary	Konawaena	2011	TRUE	88.9%	11.1%	16.7%	58.3%	19	18	Honaunau Elementary	69%
Hookena Elementary	Konawaena	2011	TRUE	94.3%	14.3%	8.6%	57.1%	23	15	Hookena Elementary	43%
Princess Nahienaena Elementary	Lahainaluna	2011	TRUE	43.5%	9.2%	25.4%	27.7%	116	42	Nahienaena Elementary	54%
King Kamehameha III Elementary	Lahainaluna	2011	TRUE	52.2%	3.8%	25.2%	67.3%	115	43	Kamehameha III Elementary	60%
Lanai High & Elementary	Lanai	2011	TRUE	58.3%	7.3%	29.1%	49.1%	31	24	Lanai High & Elementary	40%
Laupahoehoe High & Elementary	Laupahoehoe	2011	TRUE	68.2%	9.1%	9.1%	50.0%	12	10	Laupahoehoe High & Elementary	56%
Iliahi Elementary	Leilehua	2011	TRUE	40.7%	1.2%	2.4%	39.0%	63	22	Iliahi Elementary	78%
Major Sheldon Wheeler Elementary	Leilehua	2011	TRUE	43.3%	8.9%	6.5%	49.7%	120	48	Wheeler Elementary	66%
Samuel K. Solomon Elementary	Leilehua	2011	TRUE	53.6%	8.3%	7.5%	44.0%	152	78	Solomon Elementary	63%
Helemano Elementary	Leilehua	2011	TRUE	67.1%	2.0%	11.2%	41.4%	97	56	Helemano Elementary	80%
Wahiawa Elementary	Leilehua	2011	TRUE	68.5%	5.5%	16.5%	46.8%	65	46	Wahiawa Elementary	63%
Kaala Elementary	Leilehua	2011	TRUE	78.4%	3.5%	22.1%	26.7%	57	30	Kaala Elementary	54%
Hale Kula Elementary	Leilehua	2011	TRUE	42.1%	6.1%	6.1%	57.9%	120	80	Hale Kula Elementary	56%
Pomaikai Elementary School	Maui	2011	FALSE	27.1%	2.9%	5.0%	72.9%	90	49	Pomaikai Elementary	69%
Kamalii Elementary	Maui	2011	FALSE	37.5%	3.1%	12.5%	68.8%	90	32	Kamalii Elementary	71%
Kahului Elementary	Maui	2011	TRUE	63.4%	5.3%	33.2%	41.6%	121	70	Kahului Elementary	63%
Kihei Elementary	Maui	2011	TRUE	63.8%	6.4%	25.0%	40.1%	114	71	Kihei Elementary	67%
Lihikai Elementary	Maui	2011	TRUE	69.1%	3.4%	29.8%	50.0%	107	72	Lihikai Elementary	57%
Queen Kaahumanu Elementary	McKinley	2011	TRUE	54.7%	7.9%	49.5%	45.5%	66	38	Kaahumanu Elementary	44%
Royal	McKinley	2011	TRUE	62.1%	7.0%	31.6%	52.6%	31	27	Royal Elementary	69%
Lanakila Elementary	McKinley	2011	TRUE	70.9%	4.7%	24.4%	61.6%	65	24	Lanakila Elementary	80%

Kauluwela Elementary	McKinley	2011	TRUE	72.9%	6.8%	59.3%	76.3%	31	26	Kauluwela Elementary	65%
Princess Victoria Kaiulani Elementary	McKinley	2011	TRUE	75.0%	5.1%	45.8%	35.6%	31	27	Kaiulani Elementary	48%
Princess Miriam K. Likelike Elementary	McKinley	2011	TRUE	82.8%	6.5%	58.1%	54.8%	45	17	Likelike Elementary	51%
Mililani Ike Elementary	Mililani	2011	FALSE	2.6%	6.5%	2.6%	87.1%	83	70	Mililani Ike Elementary	94%
Mililani Mauka Elementary	Mililani	2011	FALSE	19.0%	4.9%	2.7%	78.6%	119	67	Mililani Mauka Elementary	85%
Mililani Uka Elementary	Mililani	2011	FALSE	25.8%	7.0%	0.0%	69.5%	84	44	Mililani Uka Elementary	83%
Mililani Waena Elementary	Mililani	2011	FALSE	30.7%	2.7%	5.4%	63.4%	73	43	Mililani Waena Elementary	85%
Kipapa Elementary	Mililani	2011	TRUE	47.9%	9.3%	7.6%	51.7%	70	48	Kipapa Elementary	57%
William R. Shafter Elementary	Moanalua	2011	FALSE	8.6%	5.8%	8.7%	79.7%	32	31	Shafter Elementary	84%
Moanalua Elementary	Moanalua	2011	FALSE	18.9%	4.5%	5.6%	94.4%	66	24	Moanalua Elementary	71%
Red Hill Elementary	Moanalua	2011	TRUE	37.0%	11.1%	13.0%	38.9%	32	14	Red Hill Elementary	51%
Salt Lake Elementary	Moanalua	2011	TRUE	47.0%	6.8%	34.1%	49.2%	83	49	Salt Lake Elementary	73%
Kilohana Elementary	Molokai	2011	TRUE	66.7%	6.7%	0.0%	66.7%	8	5	Kilohana Elementary	0%
Kaunakakai Elementary	Molokai	2011	TRUE	75.0%	5.9%	0.0%	91.2%	22	14	Kaunakakai Elementary	61%
Maunaloa Elementary	Molokai	2011	TRUE	75.0%	0.0%	0.0%	50.0%	6	4	Maunaloa Elementary	64%
Nanakuli Elementary	Nanakuli	2011	TRUE	80.9%	17.9%	100.0%	42.9%	39	29	Nanakuli Elementary	54%
Nanaikapono Elementary	Nanakuli	2011	TRUE	89.3%	2.3%	10.5%	46.6%	70	60	Nanaikapono Elementary	28%
Keonepoko Elementary	Pahoa	2011	TRUE	82.5%	7.2%	11.7%	55.0%	70	40	Keonepoko Elementary	64%
Pahoa Elementary	Pahoa	2011	TRUE	92.3%	4.5%	9.1%	54.5%	47	20	Pahoa Elementary	63%
Kanoelani Elementary	Pearl City	2011	TRUE	30.8%	3.8%	6.7%	63.8%	64	40	Kanoelani Elementary	69%
Manana Elementary	Pearl City	2011	TRUE	35.1%	5.4%	8.1%	75.7%	55	19	Manana Elementary	68%
Pearl City Highlands Elementary	Pearl City	2011	FALSE	35.8%	3.0%	9.1%	62.1%	41	26	Pearl City Highlands Elementary	87%

Waiuu Elementary	Pearl City	2011	TRUE	36.5%	3.5%	3.5%	58.8%	51	35	Waiuu Elementary	77%
Palisades Elementary	Pearl City	2011	TRUE	39.0%	7.8%	11.7%	57.1%	49	25	Palisades Elementary	75%
Lehua Elementary	Pearl City	2011	TRUE	39.4%	13.6%	7.6%	53.0%	43	23	Lehua Elementary	74%
Pearl City Elementary	Pearl City	2011	TRUE	49.5%	9.6%	9.6%	48.1%	68	35	Pearl City Elementary	74%
Momilani Elementary	Pearl City	2011	FALSE	20.0%	0.0%	10.0%	83.3%	42	19	Momilani Elementary	87%
Horace Meek Hickam Elementary	Radford	2011	FALSE	10.4%	10.1%	5.1%	63.3%	55	22	Hickam Elementary	88%
Chester W. Nimitz Elementary	Radford	2011	FALSE	17.5%	9.7%	3.9%	64.1%	61	44	Nimitz Elementary	71%
Mokulele Elementary	Radford	2011	FALSE	25.6%	7.8%	2.2%	40.0%	59	29	Mokulele Elementary	69%
Pearl Harbor Kai Elementary	Radford	2011	FALSE	27.5%	6.7%	9.0%	56.2%	56	37	Pearl Harbor Kai Elementary	54%
Aliamanu Elementary	Radford	2011	FALSE	30.2%	6.0%	4.3%	48.7%	67	50	Aliamanu Elementary	59%
Pearl Harbor Elementary	Radford	2011	TRUE	40.7%	6.5%	11.5%	58.3%	91	53	Pearl Harbor Elementary	61%
Makalapa Elementary	Radford	2011	TRUE	45.3%	1.1%	11.6%	57.9%	61	31	Makalapa Elementary	64%
Nuuanu Elementary	Roosevelt	2011	FALSE	9.4%	3.2%	4.8%	74.2%	45	21	Nuuanu Elementary	87%
Manoa Elementary	Roosevelt	2011	FALSE	11.5%	1.1%	16.1%	92.5%	64	30	Manoa Elementary	95%
Noelani Elementary	Roosevelt	2011	FALSE	12.3%	0.0%	25.8%	86.4%	51	14	Noelani Elementary	87%
Maemae Elementary	Roosevelt	2011	FALSE	26.4%	2.8%	1.9%	91.6%	65	42	Maemae Elementary	76%
Pauoa Elementary	Roosevelt	2011	TRUE	56.7%	6.7%	11.7%	75.0%	42	17	Pauoa Elementary	73%
Abraham Lincoln Elementary	Roosevelt	2011	TRUE	65.0%	3.3%	13.3%	41.7%	33	27	Lincoln Elementary	74%
Kula Kaiapuni O Anuenue	Roosevelt	2011	TRUE	69.7%	3.1%	0.0%	73.4%	43	23	Anuenue	55%
Waiakeawaena Elementary	Waiakea	2011	TRUE	49.5%	3.8%	1.0%	81.0%	64	42	Waiakeawaena Elementary	68%
Waiakea Elementary	Waiakea	2011	TRUE	60.6%	1.5%	4.5%	66.7%	72	61	Waiakea Elementary	64%
Waialua Elementary	Waialua	2011	TRUE	45.1%	2.2%	7.8%	64.4%	61	27	Waialua Elementary	91%
Haleiwa Elementary	Waialua	2011	TRUE	71.4%	10.8%	0.0%	43.2%	25	12	Haleiwa Elementary	88%
Leihoku Elementary	Waianae	2011	TRUE	74.1%	3.5%	3.5%	41.1%	83	59	Leihoku Elementary	64%
Makaha Elementary	Waianae	2011	TRUE	78.0%	2.9%	0.0%	50.0%	56	48	Makaha Elementary	33%
Maili Elementary	Waianae	2011	TRUE	85.6%	5.7%	7.5%	45.3%	101	61	Maili Elementary	50%
Waianae Elementary	Waianae	2011	TRUE	86.3%	6.2%	7.4%	27.2%	53	26	Waianae Elementary	26%
Eleele Elementary	Waimea	2011	TRUE	47.2%	6.9%	8.3%	48.6%	47	24	Eleele Elementary	69%

Kalaheo Elementary	Waimea	2011	TRUE	52.7%	3.8%	1.9%	72.1%	52	51	Kalaheo Elementary	71%
Kekaha Elementary	Waimea	2011	TRUE	76.4%	4.1%	13.5%	52.7%	45	29	Kekaha Elementary	44%
Kaleiopuu Elementary	Waipahu	2011	TRUE	35.7%	2.9%	7.2%	45.3%	91	48	Kaleiopuu Elementary	64%
Waikele Elementary	Waipahu	2011	FALSE	41.4%	6.6%	15.4%	52.7%	52	39	Waikele Elementary	59%
August Ahrens Elementary	Waipahu	2011	TRUE	54.0%	3.8%	14.5%	41.4%	120	67	August Ahrens Elementary	53%
Honowai Elementary	Waipahu	2011	TRUE	67.3%	8.5%	20.8%	37.7%	59	48	Honowai Elementary	52%
Waipahu Elementary	Waipahu	2011	TRUE	81.1%	1.5%	54.0%	14.6%	86	48	Waipahu Elementary	44%
Total		2011	77%	52.0%	5.0%	14.0%	58.0%	10185	5883		66%

Senator Ige

Hawaii State School Readiness Assessment - 2011-12 School Year (SY)								DOE SY
School	Complex	Year	Title 1	% Lunch	% SPED	% ESL	% PS	Date of Birth (Jan 1-Jul 31, 2006)
Pearl Ridge Elementary	Aiea	2011	FALSE	27.5%	2.2%	6.7%	79.8%	58
Alvah A. Scott Elementary	Aiea	2011	TRUE	48.8%	1.3%	11.3%	51.3%	51
Waimalu Elementary	Aiea	2011	TRUE	53.1%	8.8%	20.0%	55.0%	42
Aiea Elementary	Aiea	2011	TRUE	75.6%	8.7%	19.6%	28.3%	30
Gustave H. Webling Elementary	Aiea	2011	FALSE	31.8%	1.2%	1.2%	84.7%	47
Kanoelani Elementary	Pearl City	2011	TRUE	30.8%	3.8%	6.7%	63.8%	64
Manana Elementary	Pearl City	2011	TRUE	35.1%	5.4%	8.1%	75.7%	55
Pearl City Highlands Elementary	Pearl City	2011	FALSE	35.8%	3.0%	9.1%	62.1%	41
Waiau Elementary	Pearl City	2011	TRUE	36.5%	3.5%	3.5%	58.8%	51
Palisades Elementary	Pearl City	2011	TRUE	39.0%	7.8%	11.7%	57.1%	49
Lehua Elementary	Pearl City	2011	TRUE	39.4%	13.6%	7.6%	53.0%	43
Pearl City Elementary	Pearl City	2011	TRUE	49.5%	9.6%	9.6%	48.1%	68
Momilani Elementary	Pearl City	2011	FALSE	20.0%	0.0%	10.0%	83.3%	42

2011-12	Hawaii State	
Date of Birth (Aug 1-Dec 31, 2006)	School	3rd Grade Reading
30	Pearl Ridge Elementary	82%
29	Scott Elementary	76%
37	Waimalu Elementary	70%
15	Aiea Elementary	53%
38	Webling Elementary	76%
40	Kanoelani Elementary	69%
19	Manana Elementary	68%
26	Pearl City Highlands Elementary	87%
35	Waiau Elementary	77%
25	Palisades Elementary	75%
23	Lehua Elementary	74%
35	Pearl City Elementary	74%
19	Momilani Elementary	87%

371

Senator Kidani

Hawaii State School Readiness Assessment - 2011-12 School Year (SY)								DOE SY
School	Complex	Year	Title 1	% Lunch	% SPED	% ESL	% PS	Date of Birth (Jan 1-Jul 31, 2006)
Mililani Ike Elementary	Mililani	2011	FALSE	2.6%	6.5%	2.6%	87.1%	83
Mililani Mauka Elementary	Mililani	2011	FALSE	19.0%	4.9%	2.7%	78.6%	119
Mililani Uka Elementary	Mililani	2011	FALSE	25.8%	7.0%	0.0%	69.5%	84
Mililani Waena Elementary	Mililani	2011	FALSE	30.7%	2.7%	5.4%	63.4%	73
Kipapa Elementary	Mililani	2011	TRUE	47.9%	9.3%	7.6%	51.7%	70

2011-12	Hawaii State	
Date of Birth (Aug 1-Dec 31, 2006)	School	3rd Grade Reading
70	Mililani Ike Elementary	94%
67	Mililani Mauka Elementary	85%
44	Mililani Uka Elementary	83%
43	Mililani Waena Elementary	85%
48	Kipapa Elementary	57%

272

Senator Chun Oakland

Hawaii State School Readiness Assessment - 2011-12 School Year (SY)								DOE SY Kinder
School	Complex	Year	Title 1	% Lunch	% SPED	% ESL	% PS	Date of Birth (Jan 1-Jul 31, 2006)
Kapalama Elementary	Farrington	2011	TRUE	65.6%	1.5%	7.6%	62.1%	87
Kalihi-waena Elementary	Farrington	2011	TRUE	71.8%	3.7%	29.6%	29.6%	53
Kalihi-kai Elementary	Farrington	2011	TRUE	72.2%	3.5%	47.8%	30.4%	67
Kalihi Elementary	Farrington	2011	TRUE	72.4%	0.0%	53.6%	35.7%	17
Kalihi-uka Elementary	Farrington	2011	TRUE	75.6%	8.7%	10.9%	32.6%	25
Puuhale Elementary	Farrington	2011	TRUE	77.6%	2.1%	18.8%	27.1%	28
Joseph J. Fern Elementary	Farrington	2011	TRUE	79.4%	0.0%	36.4%	37.9%	39
Kaewai Elementary	Farrington	2011	TRUE	83.3%	0.0%	39.7%	39.7%	36
Linapuni Elementary	Farrington	2011	TRUE	87.3%	3.7%	56.8%	66.7%	50
Queen Kaahumanu Elementary	McKinley	2011	TRUE	54.7%	7.9%	49.5%	45.5%	66
Royal	McKinley	2011	TRUE	62.1%	7.0%	31.6%	52.6%	31
Lanakila Elementary	McKinley	2011	TRUE	70.9%	4.7%	24.4%	61.6%	65
Kauluwela Elementary	McKinley	2011	TRUE	72.9%	6.8%	59.3%	76.3%	31
Princess Victoria Kaiulani Elementary	McKinley	2011	TRUE	75.0%	5.1%	45.8%	35.6%	31
Princess Miriam K. Likelike Elementary	McKinley	2011	TRUE	82.8%	6.5%	58.1%	54.8%	45
Nuuanu Elementary	Roosevelt	2011	FALSE	9.4%	3.2%	4.8%	74.2%	45
Manoa Elementary	Roosevelt	2011	FALSE	11.5%	1.1%	16.1%	92.5%	64

Noelani Elementary	Roosevelt	2011	FALSE	12.3%	0.0%	25.8%	86.4%	51
Maemae Elementary	Roosevelt	2011	FALSE	26.4%	2.8%	1.9%	91.6%	65
Pauoa Elementary	Roosevelt	2011	TRUE	56.7%	6.7%	11.7%	75.0%	42
Abraham Lincoln Elementary	Roosevelt	2011	TRUE	65.0%	3.3%	13.3%	41.7%	33
Kula Kaiapuni O Anuenue	Roosevelt	2011	TRUE	69.7%	3.1%	0.0%	73.4%	43

1014

2011-12 garten	Hawaii State Assessment	
Date of Birth (Aug 1-Dec 31, 2006)	School	3rd Grade Reading
45	Kapalama Elementary	57%
25	Kalihi-waena Elementary	39%
44	Kalihi-kai Elementary	48%
11	Kalihi Elementary	49%
21	Kalihi-uka Elementary	73%
21	Puuhale Elementary	58%
26	Fern Elementary	42%
24	Kaewai Elementary	54%
27	See Fern and Kalihi Waena Schools	
38	Kaahumanu Elementary	44%
27	Royal Elementary	69%
24	Lanakila Elementary	80%
26	Kauluwela Elementary	65%
27	Kaiulani Elementary	48%
17	Likelike Elementary	51%
21	Nuuanu Elementary	87%
30	Manoa Elementary	95%

14	Noelani Elementary	87%
42	Maemae Elementary	76%
17	Pauoa Elementary	73%
27	Lincoln Elementary	74%
23	Anuenue	55%

577

Senator Dela Cruz

Hawaii State School Readiness Assessment - 2011-12 School Year (SY)								DOE SY Kinder
School	Complex	Year	Title 1	% Lunch	% SPED	% ESL	% PS	Date of Birth (Jan 1-Jul 31, 2006)
Iliahi Elementary	Leilehua	2011	TRUE	40.7%	1.2%	2.4%	39.0%	63
Sheldon Wheeler Elementary	Leilehua	2011	TRUE	43.3%	8.9%	6.5%	49.7%	120
Samuel K. Solomon Elementary	Leilehua	2011	TRUE	53.6%	8.3%	7.5%	44.0%	152
Helemano Elementary	Leilehua	2011	TRUE	67.1%	2.0%	11.2%	41.4%	97
Wahiawa Elementary	Leilehua	2011	TRUE	68.5%	5.5%	16.5%	46.8%	65
Kaala Elementary	Leilehua	2011	TRUE	78.4%	3.5%	22.1%	26.7%	57
Hale Kula Elementary	Leilehua	2011	TRUE	42.1%	6.1%	6.1%	57.9%	120

2011-12 garten	Hawaii State Assessment	
Date of Birth (Aug 1-Dec 31, 2006)	School	3rd Grade Reading
22	Iliahi Elementary	78%
48	Wheeler Elementary	66%
78	Solomon Elementary	63%
56	Helemano Elementary	80%
46	Wahiawa Elementary	63%
30	Kaala Elementary	54%
80	Hale Kula Elementary	56%

360

Senator English

Hawaii State School Readiness Assessment - 2011-12 School Year (SY)								DOE SY Kinder
School	Complex	Year	Title 1	% Lunch	% SPED	% ESL	% PS	Date of Birth (Jan 1-Jul 31, 2006)
Kula Elementary	Kekaulike	2011	TRUE	49.4%	7.4%	2.5%	69.1%	60
Pukalani Elementary	Kekaulike	2011	TRUE	51.1%	7.9%	6.7%	70.8%	65
Haiku Elementary	Kekaulike	2011	TRUE	58.5%	5.4%	6.5%	46.2%	55
Makawao Elementary	Kekaulike	2011	TRUE	61.0%	3.9%	6.8%	68.0%	71
Paia Elementary	Kekaulike	2011	TRUE	64.8%	0.0%	0.0%	77.5%	46
Lanai High & Elementary	Lanai	2011	TRUE	58.3%	7.3%	29.1%	49.1%	31
Kilohana Elementary	Molokai	2011	TRUE	66.7%	6.7%	0.0%	66.7%	8
Kaunakakai Elementary	Molokai	2011	TRUE	75.0%	5.9%	0.0%	91.2%	22
Maunaloa Elementary	Molokai	2011	TRUE	75.0%	0.0%	0.0%	50.0%	6

2011-12 garten	Hawaii State Assessment	
Date of Birth (Aug 1-Dec 31, 2006)	School	3rd Grade Reading
23	Kula Elementary	80%
25	Pukalani Elementary	81%
35	Haiku Elementary	84%
32	Makawao Elementary	65%
26	Paia Elementary	81%
24	Lanai High & Elementary	40%
5	Kilohana Elementary	0%
14	Kaunakakai Elementary	61%
4	Maunaloa Elementary	64%

188

Senator Espero

Hawaii State School Readiness Assessment - 2011-12 School Year (SY)								DOE SY Kinder
School	Complex	Year	Title 1	% Lunch	% SPED	% ESL	% PS	Date of Birth (Jan 1-Jul 31, 2006)
Holomua Elementary	Campbell	2011	FALSE	31.5%	4.1%	5.1%	53.8%	119
Iroquois Point Elementary	Campbell	2011	TRUE	36.8%	4.1%	5.7%	58.5%	78
Ewa Beach Elementary	Campbell	2011	TRUE	40.0%	7.3%	8.3%	59.6%	62
Kaimiloa Elementary	Campbell	2011	TRUE	60.7%	6.8%	13.6%	46.6%	59
Pohakea Elementary	Campbell	2011	TRUE	61.3%	6.5%	9.1%	31.2%	44
Ewa Elementary	Campbell	2011	TRUE	62.9%	3.2%	8.4%	47.1%	98
Keoneula Elementary	Campbell	2011	FALSE	21.6%	2.7%	8.0%	65.2%	68
Kaleiopuu Elementary	Waipahu	2011	TRUE	35.7%	2.9%	7.2%	45.3%	91
Waikele Elementary	Waipahu	2011	FALSE	41.4%	6.6%	15.4%	52.7%	52
August Ahrens Elementary	Waipahu	2011	TRUE	54.0%	3.8%	14.5%	41.4%	120
Honowai Elementary	Waipahu	2011	TRUE	67.3%	8.5%	20.8%	37.7%	59
Waipahu Elementary	Waipahu	2011	TRUE	81.1%	1.5%	54.0%	14.6%	86

2011-12 garten	Hawaii State Assessment	
Date of Birth (Aug 1-Dec 31, 2006)	School	3rd Grade Reading
79	Holomua Elementary	68%
51	Iroquois Point Elementary	75%
47	Ewa Beach Elementary	56%
30	Kaimiloa Elementary	62%
36	Pohakea Elementary	70%
60	Ewa Elementary	55%
48	Keoneula Elementary	66%
48	Kaleiopuu Elementary	64%
39	Waikele Elementary	59%
67	August Ahrens Elementary	53%
48	Honowai Elementary	52%
48	Waipahu Elementary	44%

Senator Fukunaga

Hawaii State School Readiness Assessment - 2011-12 School Year (SY)								DOE SY Kinder
School	Complex	Year	Title 1	% Lunch	% SPED	% ESL	% PS	Date of Birth (Jan 1-Jul 31, 2006)
Queen Kaahumanu Elementary	McKinley	2011	TRUE	54.7%	7.9%	49.5%	45.5%	66
Royal	McKinley	2011	TRUE	62.1%	7.0%	31.6%	52.6%	31
Lanakila Elementary	McKinley	2011	TRUE	70.9%	4.7%	24.4%	61.6%	65
Kauluwela Elementary	McKinley	2011	TRUE	72.9%	6.8%	59.3%	76.3%	31
Princess Victoria Kaiulani Elementary	McKinley	2011	TRUE	75.0%	5.1%	45.8%	35.6%	31
Princess Miriam K. Likelike Elementary	McKinley	2011	TRUE	82.8%	6.5%	58.1%	54.8%	45
Nuuanu Elementary	Roosevelt	2011	FALSE	9.4%	3.2%	4.8%	74.2%	45
Manoa Elementary	Roosevelt	2011	FALSE	11.5%	1.1%	16.1%	92.5%	64
Noelani Elementary	Roosevelt	2011	FALSE	12.3%	0.0%	25.8%	86.4%	51
Maemae Elementary	Roosevelt	2011	FALSE	26.4%	2.8%	1.9%	91.6%	65
Pauoa Elementary	Roosevelt	2011	TRUE	56.7%	6.7%	11.7%	75.0%	42

Abraham Lincoln Elementar y	Roosevelt	2011	TRUE	65.0%	3.3%	13.3%	41.7%	33
Kula Kaiapuni O Anuenu	Roosevelt	2011	TRUE	69.7%	3.1%	0.0%	73.4%	43
								612

2011-12 garten	Hawaii State Assessment	
Date of Birth (Aug 1-Dec 31, 2006)	School	3rd Grade Reading
38	Kaahuma nu Elementar y	44%
27	Royal Elementar y	69%
24	Lanakila Elementar y	80%
26	Kauluwela Elementar y	65%
27	Kaiulani Elementar y	48%
17	Likelike Elementar y	51%
21	Nuuanu Elementar y	87%
30	Manoa Elementar y	95%
14	Noelani Elementar y	87%
42	Maemae Elementar y	76%
17	Pauoa Elementar y	73%

27	Lincoln Elementar y	74%
23	Anuenue	55%

333

Senator Kahele

Hawaii State School Readiness Assessment - 2011-12 School Year (SY)								DOE SY Kinder
School	Complex	Year	Title 1	% Lunch	% SPED	% ESL	% PS	Date of Birth (Jan 1- Jul 31, 2006)
Ernest Bowen de Silva Elementary	Hilo	2011	FALSE	36.1%	6.6%	1.6%	91.8%	38
Haaheo Elementary	Hilo	2011	TRUE	64.5%	3.2%	6.5%	74.2%	23
Kaumana Elementary	Hilo	2011	TRUE	65.3%	6.1%	6.1%	65.3%	31
Kalaniana'ole Elementary & Intermediate	Hilo	2011	TRUE	73.7%	5.3%	26.3%	26.3%	22
Hilo Union Elementary	Hilo	2011	TRUE	85.1%	17.3%	10.7%	60.0%	45
Chiefess Kapiolani Elementary	Hilo	2011	TRUE	87.7%	8.6%	22.4%	53.4%	36
Keaukaha Elementary	Hilo	2011	TRUE	88.2%	6.0%	2.0%	56.0%	30
Kau High & Pahala Elementary	Kau	2011	TRUE	80.0%	0.0%	12.5%	70.8%	17
Naalehu Elementary & Intermediate	Kau	2011	TRUE	86.8%	1.5%	40.3%	31.3%	44
Keaau Elementary	Keaau	2011	TRUE	79.1%	5.6%	20.8%	46.4%	75
Mountain View Elementary	Keaau	2011	TRUE	87.6%	4.1%	4.9%	21.3%	58
Keonepoko Elementary	Pahoa	2011	TRUE	82.5%	7.2%	11.7%	55.0%	70
Pahoa Elementary	Pahoa	2011	TRUE	92.3%	4.5%	9.1%	54.5%	47

2011-12 garten	Hawaii State Assessment SY2010-11	
Date of Birth (Aug 1- Dec 31, 2006)	School	3rd Grade Reading
22	de Silva Elementary	88%
8	Haaheo Elementary	77%
19	Kaumana Elementary	68%
15	Kalaniana'ole Elementary & Intermediate	62%
28	Hilo Union Elementary	45%
25	Kapiolani Elementary	64%
20	Keaukaha Elementary	57%
6	Kau High & Pahala Elementary	56%
21	Naalehu Elementary	37%
52	Keaau Elementary	63%
49	Mountain View Elementary	34%
40	Keonepoko Elementary	64%
20	Pahoa Elementary	63%

Senator Kim

Hawaii State School Readiness Assessment - 2011-12 School Year (SY)								DOE SY Kinder
School	Complex	Year	Title 1	% Lunch	% SPED	% ESL	% PS	Date of Birth (Jan 1- Jul 31, 2006)
Pearl Ridge Elementary	Aiea	2011	FALSE	27.5%	2.2%	6.7%	79.8%	58
Alvah A. Scott Elementary	Aiea	2011	TRUE	48.8%	1.3%	11.3%	51.3%	51
Waimalu Elementary	Aiea	2011	TRUE	53.1%	8.8%	20.0%	55.0%	42
Aiea Elementary	Aiea	2011	TRUE	75.6%	8.7%	19.6%	28.3%	30
Gustave H. Webling Elementary	Aiea	2011	FALSE	31.8%	1.2%	1.2%	84.7%	47
Kapalama Elementary	Farrington	2011	TRUE	65.6%	1.5%	7.6%	62.1%	87
Kalihi-waena Elementary	Farrington	2011	TRUE	71.8%	3.7%	29.6%	29.6%	53
Kalihi-kai Elementary	Farrington	2011	TRUE	72.2%	3.5%	47.8%	30.4%	67
Kalihi Elementary	Farrington	2011	TRUE	72.4%	0.0%	53.6%	35.7%	17
Kalihi-uka Elementary	Farrington	2011	TRUE	75.6%	8.7%	10.9%	32.6%	25
Puuhale Elementary	Farrington	2011	TRUE	77.6%	2.1%	18.8%	27.1%	28
Joseph J. Fern Elementary	Farrington	2011	TRUE	79.4%	0.0%	36.4%	37.9%	39
Kaewai Elementary	Farrington	2011	TRUE	83.3%	0.0%	39.7%	39.7%	36
Linapuni Elementary	Farrington	2011	TRUE	87.3%	3.7%	56.8%	66.7%	50
Moanalua Elementary	Moanalua	2011	FALSE	18.9%	4.5%	5.6%	94.4%	66
Red Hill Elementary	Moanalua	2011	TRUE	37.0%	11.1%	13.0%	38.9%	32
Salt Lake Elementary	Moanalua	2011	TRUE	47.0%	6.8%	34.1%	49.2%	83

2011-12 garten	Hawaii State Assessment SY2010-11	
Date of Birth (Aug 1- Dec 31, 2006)	School	3rd Grade Reading
30	Pearl Ridge Elementary	82%
29	Scott Elementary	76%
37	Waimalu Elementary	70%
15	Aiea Elementary	53%
38	Webling Elementary	76%
45	Kapalama Elementary	57%
25	Kalihi-waena Elementary	39%
44	Kalihi-kai Elementary	48%
11	Kalihi Elementary	49%
21	Kalihi-uka Elementary	73%
21	Puuhale Elementary	58%
26	Fern Elementary	42%
24	Kaewai Elementary	54%
27	See Fern and Kalihi Waena Schools	
24	Moanalua Elementary	71%
14	Red Hill Elementary	51%
49	Salt Lake Elementary	73%

HSSRA



Hawaii State Assessment

Senator Kouchi

Hawaii State School Readiness Assessment - 2011-12 School Year (SY)								DOE SY Kinder
School	Complex	Year	Title 1	% Lunch	% SPED	% ESL	% PS	Date of Birth (Jan 1- Jul 31, 2006)
Kilauea Elementary	Kapaa	2011	TRUE	52.5%	2.5%	5.0%	65.0%	27
Kapaa Elementary	Kapaa	2011	TRUE	71.2%	4.9%	9.2%	54.3%	116
Hanalei Elementary	Kapaa	2011	FALSE	46.4%	1.8%	5.4%	67.9%	41
Koloa Elementary	Kauai	2011	TRUE	48.5%	5.9%	4.4%	67.6%	44
King Kaumualii Elementary	Kauai	2011	TRUE	54.5%	5.7%	10.5%	73.3%	71
Elsie H. Wilcox Elementary	Kauai	2011	TRUE	64.1%	3.9%	7.2%	64.7%	96
Eleele Elementary	Waimea	2011	TRUE	47.2%	6.9%	8.3%	48.6%	47
Kalaheo Elementary	Waimea	2011	TRUE	52.7%	3.8%	1.9%	72.1%	52
Kekaha Elementary	Waimea	2011	TRUE	76.4%	4.1%	13.5%	52.7%	45

2011-12 garten	Hawaii State Assessment SY2010-11	
Date of Birth (Aug 1- Dec 31, 2006)	School	3rd Grade Reading
12	Kilauea Elementary	55%
67	Kapaa Elementary	50%
15	Hanalei Elementary	70%
24	Koloa Elementary	71%
39	Kaumualii Elementary	50%
59	Wilcox Elementary	52%
24	Eleele Elementary	69%
51	Kalaheo Elementary	71%
29	Kekaha Elementary	44%

Senator Ryan

Hawaii State School Readiness Assessment - 2011-12 School Year (SY)								DOE SY Kinder
School	Complex	Year	Title 1	% Lunch	% SPED	% ESL	% PS	Date of Birth (Jan 1- Jul 31, 2006)
Kaelepulu Elementary	Kailua	2011	FALSE	12.5%	9.4%	3.1%	81.3%	27
Maunawili Elementary	Kailua	2011	TRUE	50.0%	7.1%	0.0%	50.0%	34
Keolu Elementary	Kailua	2011	TRUE	62.5%	20.8%	8.3%	45.8%	15
Waimanalo Elementary & Intermediate	Kailua	2011	TRUE	78.9%	8.6%	20.7%	62.1%	37
Blanche Pope Elementary	Kailua	2011	TRUE	80.4%	17.9%	2.6%	74.4%	32
Enchanted Lake Elementary	Kailua	2011	FALSE	36.8%	10.2%	3.4%	84.1%	54
Hahaione Elementary	Kaiser	2011	FALSE	5.6%	2.2%	3.4%	93.3%	53
Aina Haina Elementary	Kaiser	2011	FALSE	15.3%	0.9%	7.1%	96.4%	75
Koko Head Elementary	Kaiser	2011	FALSE	19.0%	1.7%	10.3%	91.4%	35
Kamiloiki Elementary	Kaiser	2011	FALSE	25.3%	6.5%	5.2%	76.6%	52
Aikahi Elementary	Kalaheo	2011	FALSE	21.0%	5.8%	2.9%	76.7%	91
Kainalu Elementary	Kalaheo	2011	TRUE	43.0%	7.5%	12.5%	72.5%	49
Kailua Elementary	Kalaheo	2011	TRUE	57.1%	11.1%	14.3%	44.4%	45
Mokapu Elementary	Kalaheo	2011	FALSE	33.0%	9.0%	2.4%	56.2%	136

2011-12 garten	Hawaii State Assessment SY2010-11	
Date of Birth (Aug 1- Dec 31, 2006)	School	3rd Grade Reading
3	Kaelepulu Elementary	56%
22	Maunawili Elementary	68%
8	Keolu Elementary	69%
19	Waimanalo Elementary & Intermediate	72%
13	Pope Elementary	64%
35	Enchanted Lake Elementary	96%
37	Hahaione Elementary	82%
42	Aina Haina Elementary	84%
22	Koko Head Elementary	84%
22	Kamiloiki Elementary	77%
13	Aikahi Elementary	82%
31	Kainalu Elementary	78%
17	Kailua Elementary	69%
76	Mokapu Elementary	61%

Senator Tokuda

Hawaii State School Readiness Assessment - 2011-12 School Year (SY)								DOE SY Kinder
School	Complex	Year	Title 1	% Lunch	% SPED	% ESL	% PS	Date of Birth (Jan 1- Jul 31, 2006)
Kaneohe Elementary	Castle	2011	FALSE	36.8%	2.4%	2.4%	78.3%	55
Kapunahala Elementary	Castle	2011	TRUE	44.8%	2.4%	2.4%	69.4%	52
Heeia Elementary	Castle	2011	TRUE	59.7%	2.8%	2.8%	77.8%	43
Puohala Elementary	Castle	2011	TRUE	68.8%	9.7%	0.0%	77.4%	21
Benjamin Parker Elementary	Castle	2011	TRUE	79.6%	6.1%	4.1%	36.7%	35
Kahaluu Elementary	Castle	2011	TRUE	87.2%	10.6%	2.1%	78.7%	36
Waihole Elementary	Castle	2011	TRUE	87.5%	20.0%	0.0%	73.3%	13
Ahuimanu Elementary	Castle	2011	TRUE	44.1%	6.2%	1.5%	89.2%	54
Kaelepulu Elementary	Kailua	2011	FALSE	12.5%	9.4%	3.1%	81.3%	27
Maunawili Elementary	Kailua	2011	TRUE	50.0%	7.1%	0.0%	50.0%	34
Keolu Elementary	Kailua	2011	TRUE	62.5%	20.8%	8.3%	45.8%	15
Waimanalo Elementary & Intermediate	Kailua	2011	TRUE	78.9%	8.6%	20.7%	62.1%	37
Blanche Pope Elementary	Kailua	2011	TRUE	80.4%	17.9%	2.6%	74.4%	32
Enchanted Lake Elementary	Kailua	2011	FALSE	36.8%	10.2%	3.4%	84.1%	54
Aikahi Elementary	Kalaheo	2011	FALSE	21.0%	5.8%	2.9%	76.7%	91
Kainalu Elementary	Kalaheo	2011	TRUE	43.0%	7.5%	12.5%	72.5%	49
Kailua Elementary	Kalaheo	2011	TRUE	57.1%	11.1%	14.3%	44.4%	45
Mokapu Elementary	Kalaheo	2011	FALSE	33.0%	9.0%	2.4%	56.2%	136

2011-12 garten	Hawaii State Assessment SY2010-11	
Date of Birth (Aug 1- Dec 31, 2006)	School	3rd Grade Reading
27	Kaneohe Elementary	85%
34	Kapunahala Elementary	80%
31	Heeia Elementary	78%
13	Puohala Elementary	57%
17	Parker Elementary	74%
14	Kahaluu Elementary	68%
3	Waiahole Elementary	0%
14	Ahuimanu Elementary	54%
3	Kaelepulu Elementary	56%
22	Maunawili Elementary	68%
8	Keolu Elementary	69%
19	Waimanalo Elementary & Intermediate	72%
13	Pope Elementary	64%
35	Enchanted Lake Elementary	96%
13	Aikahi Elementary	82%
31	Kainalu Elementary	78%
17	Kailua Elementary	69%
76	Mokapu Elementary	61%

Senator Wakai

Hawaii State School Readiness Assessment - 2011-12 School Year (SY)								DOE SY Kinder
School	Complex	Year	Title 1	% Lunch	% SPED	% ESL	% PS	Date of Birth (Jan 1- Jul 31, 2006)
Kapalama Elementary	Farrington	2011	TRUE	65.6%	1.5%	7.6%	62.1%	87
Kalihi-waena Elementary	Farrington	2011	TRUE	71.8%	3.7%	29.6%	29.6%	53
Kalihi-kai Elementary	Farrington	2011	TRUE	72.2%	3.5%	47.8%	30.4%	67
Kalihi Elementary	Farrington	2011	TRUE	72.4%	0.0%	53.6%	35.7%	17
Kalihi-uka Elementary	Farrington	2011	TRUE	75.6%	8.7%	10.9%	32.6%	25
Puuhale Elementary	Farrington	2011	TRUE	77.6%	2.1%	18.8%	27.1%	28
Joseph J. Fern Elementary	Farrington	2011	TRUE	79.4%	0.0%	36.4%	37.9%	39
Kaewai Elementary	Farrington	2011	TRUE	83.3%	0.0%	39.7%	39.7%	36
Linapuni Elementary	Farrington	2011	TRUE	87.3%	3.7%	56.8%	66.7%	50
William R. Shafter Elementary	Moanalua	2011	FALSE	8.6%	5.8%	8.7%	79.7%	32
Moanalua Elementary	Moanalua	2011	FALSE	18.9%	4.5%	5.6%	94.4%	66
Red Hill Elementary	Moanalua	2011	TRUE	37.0%	11.1%	13.0%	38.9%	32
Salt Lake Elementary	Moanalua	2011	TRUE	47.0%	6.8%	34.1%	49.2%	83
Horace Meek Hickam Elementary	Radford	2011	FALSE	10.4%	10.1%	5.1%	63.3%	55
Chester W. Nimitz Elementary	Radford	2011	FALSE	17.5%	9.7%	3.9%	64.1%	61
Mokulele Elementary	Radford	2011	FALSE	25.6%	7.8%	2.2%	40.0%	59
Pearl Harbor Kai Elementary	Radford	2011	FALSE	27.5%	6.7%	9.0%	56.2%	56
Aliamanu Elementary	Radford	2011	FALSE	30.2%	6.0%	4.3%	48.7%	67
Pearl Harbor Elementary	Radford	2011	TRUE	40.7%	6.5%	11.5%	58.3%	91
Makalapa Elementary	Radford	2011	TRUE	45.3%	1.1%	11.6%	57.9%	61

2011-12 garten	Hawaii State Assessment SY2010-11	
Date of Birth (Aug 1- Dec 31, 2006)	School	3rd Grade Reading
45	Kapalama Elementary	57%
25	Kalihi-waena Elementary	39%
44	Kalihi-kai Elementary	48%
11	Kalihi Elementary	49%
21	Kalihi-uka Elementary	73%
21	Puuhale Elementary	58%
26	Fern Elementary	42%
24	Kaewai Elementary	54%
27	See Fern and Kalihi Waena Schools	
31	Shafter Elementary	84%
24	Moanalua Elementary	71%
14	Red Hill Elementary	51%
49	Salt Lake Elementary	73%
22	Hickam Elementary	88%
44	Nimitz Elementary	71%
29	Mokulele Elementary	69%
37	Pearl Harbor Kai Elementary	54%
50	Aliamanu Elementary	59%
53	Pearl Harbor Elementary	61%
31	Makalapa Elementary	64%

Senator Slom

Hawaii State School Readiness Assessment - 2011-12 School Year (SY)								DOE SY Kinder
School	Complex	Year	Title 1	% Lunch	% SPED	% ESL	% PS	Date of Birth (Jan 1- Jul 31, 2006)
Hahaione Elementary	Kaiser	2011	FALSE	5.6%	2.2%	3.4%	93.3%	53
Aina Haina Elementary	Kaiser	2011	FALSE	15.3%	0.9%	7.1%	96.4%	75
Koko Head Elementary	Kaiser	2011	FALSE	19.0%	1.7%	10.3%	91.4%	35
Kamiloiki Elementary	Kaiser	2011	FALSE	25.3%	6.5%	5.2%	76.6%	52
Kahala Elementary	Kalani	2011	FALSE	10.1%	1.3%	21.8%	79.5%	50
John H. Wilson Elementary	Kalani	2011	FALSE	15.9%	2.3%	10.2%	95.5%	61
Waikiki Elementary	Kalani	2011	TRUE	28.9%	4.0%	49.3%	76.0%	49
King Liholiho Elementary	Kalani	2011	FALSE	29.5%	3.4%	21.6%	67.0%	59
								434

2011-12 garten	Hawaii State Assessment SY2010-11	
Date of Birth (Aug 1- Dec 31, 2006)	School	3rd Grade Reading
37	Hahaione Elementary	82%
42	Aina Haina Elementary	84%
22	Koko Head Elementary	84%
22	Kamiloiki Elementary	77%
29	Kahala Elementary	90%
43	Wilson Elementary	77%
27	Waikiki Elementary	93%
29	Liholiho Elementary	84%