

Neil Abercrombie  
Governor

Roger McKeague  
Executive Director



**Charter School Administrative Office**

1111 Bishop Street, Suite 516  
Honolulu, Hawaii 96813  
Tel: 586-3775 Fax: 586-3776

January 9, 2012

TO: Senate Committee on Ways and Means  
FROM: Roger McKeague, Executive Director CSAO  
RE: Budget Briefing Testimony

Chair Ige, Vice Chair Kidani and members of the committee, Aloha, I am Roger McKeague, Executive Director of the CSAO. I want to thank the chair and the entire committee for the time and effort being spent to provide needed facilities and operational funding for Hawaii's public charter schools.

**Mission Statement:**

The mission of the Charter Schools Administrative Office is to provide advocacy, assistance and support for the development, growth, progress and success of charter schools and the charter school system in Hawai'i in accordance with applicable state and federal laws.

**Economic Impact**

The economic downturn has impacted the charter schools in several ways. First, while charter school enrollments have continued to increase each year, the per pupil funding to the charter schools has declined significantly since fiscal year 2007-08. For example, since 2007-08 total charter school enrollment has increased by 3,208 students or 52.3%. During that same time per pupil funding for these students has declined from \$9,063.89 to \$5,933.50, a decrease of \$3,130.39 or 34.5%.

These trends have impacted the individual charter schools in a variety of ways. While enrollment growth continues to strain the charter schools ability to provide facilities for existing and new students, the declining per pupil amount has resulted in charter schools reducing or eliminating non-essential programs, relying on fundraising and other sources of revenues to supplement their operating resources and reserve

funds that were established by the charter schools for specific purposes, often for facilities or program expansion.

**Charter Schools Enrollment Trends**

Year	Total CS Enrollment	Real Growth Over Prior Year	% Growth Over Prior Year
2004-05	4,964		
2005-06	5,744	780	15.71%
2006-07	5,812	68	1.18%
2007-08	6,131	319	5.49%
2008-09	7,603	1,472	24.01%
2009-10	8,098	495	6.51%
2010-11	9,018	920	11.36%
2011-12	9,339	321	3.56%

Year	Sources				Total
	State General Funds - Operations	State General Funds - Facilities	ARRA A	ARRA B	
FY2004-05	5,736.00				5,736.00
FY2005-06	5,570.44				5,570.44
FY2006-07	7,907.41	552.58			8,459.99
FY2007-08	9,063.89				9,063.89
FY2008-09	7,837.36				7,837.36
FY2009-10	6,037.30		504.84	124.54	6,666.68
FY2010-11	5,363.00	197.00	343.79	1,356.28	7,260.07
FY2011-12	5,711.54	221.96			5,933.50

The outlook for charter schools is that per pupil funding will continue to decrease and become more severe in the supplemental budget year (FY2012-13) if the funding for charter schools remains unchanged from the Governor’s recommendations and the Act 164 budget proviso limitations. Using these provisions the per pupil funding for charter schools in FY2012-13 become \$5,579.45 for per pupil operation funding and \$221.27 for facilities funding or a total per pupil funding amount of \$5,800.72. Under this scenario funding for charter schools will decrease by \$132.78 per student or an additional decrease of 2.2% when compared to the 2011-12 fiscal year. Overall funding for charter schools will decrease by \$1,324,215 while enrollments for charter schools are projected to increase from 9,339 to 9,973 an increase of 634 students.

The funding decreases are felt most acutely by charter schools with stable enrollments because declining per pupil funding is not offset by increases in enrollment.

It is for these reasons, and in order to maintain the education programs at the charter schools, that the CSAO requests that the per pupil limitations included in Act 164 budget provisos 19 & 20 be lifted so that the entire appropriation in the supplemental budget can be distributed to the charter schools. Based upon the Governor's recommended budget and the projected enrollments this would increase the funding to be distributed to charter schools by \$340.81 per student for a total per pupil funding amount equal to \$6,141.53 per student. This would not require the appropriation of any additional funds above the amounts included in the Governor's budget recommendation.

The CSAO further requests that the per pupil amounts determined using the formula be provided for charter school operations and not split between operations and facilities as is currently required under the above cited budget provisos. The formula used to calculate the total per pupil amount is based on the DOE cost of operations and excludes the DOE's facilities costs. Yet the budget provisos require the splitting of these funds into operational and facilities segments for charter schools. In order to address the facilities needs of the charter schools the CSAO further recommends that the legislature consider funding charter school facilities using the needs based approach as outlined by the Charter Schools Funding Task Force in their report to the legislature in the 2011 legislative session (see Attachment A for an example of the application of this formula). The charter schools recognize that the State budget situation has not recovered from the financial crisis that began in 2008. Therefore, the CSAO requests only that some proportion of the amount derived under this formula be included in the funding appropriated to charter schools in the supplemental budget. The CSAO's request to the Department of Budget and Finance included a calculation using the formula in the Task Force report which totaled \$10,287,846. The 2012 financial reports submitted to the legislature under the budget proviso requirements demonstrate that the charter school costs for facilities in the most recent completed fiscal year (2010-11) exceeded \$12 million.

### **Alternatives Considered:**

In keeping with the autonomous nature of charter schools, the decreases in funding have been absorbed by a variety of means. Some of the charter schools foresaw that the changing economic situation could continue on for several years in earlier years and have relied on funds saved for economic uncertainties in prior years to help balance their budgets this year. Some have used funds earmarked for other purposes (e.g. building funds) to balance their budgets. These are short-term solutions.

To some extent all of the charter schools have had to cut their spending. For most this also means cutting their labor costs. The charter schools have saved on labor costs by reducing the number of positions (teachers, support staff and others).

Estimated cash donations to charter schools have been self reported by 27 of the 31 charter schools for a total of \$10,091,855 for fiscal year 2010-11. Fifteen of the charter schools reported receiving financial support from Kamehameha Schools. While this support is helpful it also comes with strings attached and has been an element of the support for these charter schools for many years.

Charter schools have also shifted costs to other programs where appropriate (e.g. when supplanting is allowed). The most striking example of this is the use of the American Recovery and Reinvestment Act funding appropriated by the legislature in 2009-10 and 2010-11. Unfortunately, this funding source ended after the 2010-11 fiscal year.

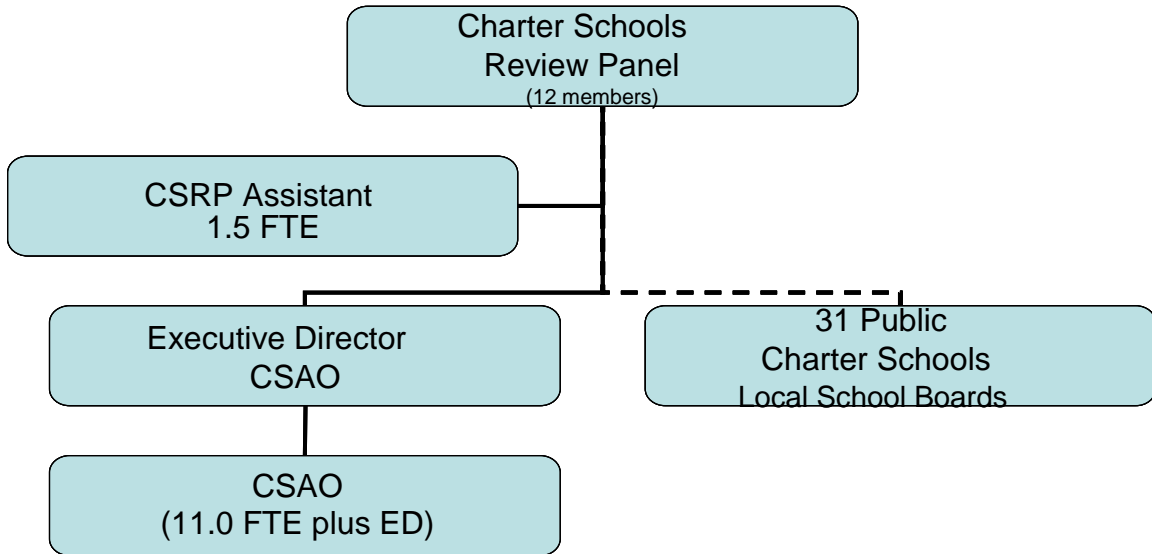
On behalf of the Public Charter Schools, mahalo for the opportunity to discuss these issues with you and mahalo for your continuing support of the public charter schools of Hawaii. We remain ready, willing and able to work with you to find innovative ways to provide the funding needed for the education of Hawaii's students at public charter schools.

**CHARTER SCHOOLS FACILITIES FUNDING  
REQUESTED FUNDING PER "NEEDS BASED" FORMULA  
FY 2012-13**

<b>Charter School</b>	<b>Projected 10-15-12 Enrollment</b>	<b>Adjusted Enrollment Count to be Used for Facilities Calcs K-6</b>	<b>Adjusted Enrollment Count to be Used for Facilities Calcs 7-12</b>	<b>Sq Ft/ Student K-6</b>	<b>Sq Ft/ Student 7-12</b>	<b>Total Authorized Sq Feet</b>	<b>Amt of Space Provided by SofHI</b>	<b>Net Authorized Sq Ft</b>	<b>AVG Mo Cost/Sq St</b>	<b>Annual Facilities Funding Support</b>
CONNECTIONS-PCS	370	168	202	73	95	31,454		31,454	\$1.57	\$592,593
EDUCATION LABORATORY-PCS	450	116	334	73	95	40,198		40,198	\$1.57	\$757,330
HAKIPU'U LEARNING CTR-PCS	96	28	68	73	95	8,504		8,504	\$1.57	\$160,215
HALAU KU MANA-PCS	82	6	76	73	95	7,658		7,658	\$1.57	\$144,277
HALAU LOKAHI-PCS	265	79	82	73	95	13,557		13,557	\$1.57	\$255,414
HI ACADEMY OF A&S-PCS	489	214	235	73	95	37,947		37,947	\$1.57	\$714,921
HAWAII TECHNOLOGY ACADEMY PCS	1,326	261	325	73	95	49,928		49,928	\$1.57	\$940,644
INNOVATIONS-PCS	205	160	45	73	95	15,955		15,955	\$1.57	\$300,592
KA 'UMEKE KA'EO-PCS	354	275	79	73	95	27,580		27,580	\$1.57	\$519,607
KA WAIHONA 'O KA NA'AUAO-PCS	642	498	144	73	95	50,034		50,034	\$1.57	\$942,641
KAMAILE ACADEMY	1,045	775	250	73	95	80,325	73,405	6,920	\$1.57	\$130,373
KANU O KA'AINA-PCS	293	170	113	73	95	23,145		23,145	\$1.57	\$436,052
KANUIKAPONO-PCS	132	96	36	73	95	10,428		10,428	\$1.57	\$196,464
KAWAIKINI-PCS	128	88	40	73	95	10,224		10,224	\$1.57	\$192,620
KE ANA LA'AHANA-PCS	84	0	84	73	95	7,980	2,625	5,355	\$1.57	\$100,888
KE KULA NI'IIHAU 'O KEKAHA-LPCS	45	25	20	73	95	3,725		3,725	\$1.57	\$70,179
KE KULA 'O KAMAKAU-PCS	182	112	54	73	95	13,306		13,306	\$1.57	\$250,685
KE KULA 'O NAWAHIOKALANI'OPU'U IKI-LPCS	285	236	49	73	95	21,883		21,883	\$1.57	\$412,276
KIHEI-PCS	645	142	361	73	95	44,661		44,661	\$1.57	\$841,413
KONA PACIFIC-PCS	232	184	48	73	95	17,992		17,992	\$1.57	\$338,969
KUA 'O KA LA-PCS	280	142	138	73	95	23,476		23,476	\$1.57	\$442,288
KUALAPUU	409	391	0	73	95	28,543	36,118	(7,575)	\$1.57	\$0
KULA AUPUNI NI'IIHAU (KANAKA) PCS	57	32	25	73	95	4,711		4,711	\$1.57	\$88,755
LANIKAI-PCS	350	332	0	73	95	24,236	24,978	(742)	\$1.57	\$0
MYRON B THOMPSON ACAD-PCS	523	47	145	73	95	17,206		17,206	\$1.57	\$324,161
VOLCANO SCH OF A&S-PCS	168	120	48	73	95	13,320		13,320	\$1.57	\$250,949
VOYAGER-PCS	256	215	41	73	95	19,590		19,590	\$1.57	\$369,076
WAIALAE-PCS	465	465	0	73	95	33,945	48,822	(14,877)	\$1.57	\$0
WAIMEA MID-PCCS	258	84	174	73	95	22,662	56,156	(33,494)	\$1.57	\$0
WATERS OF LIFE-PCS	110	91	19	73	95	8,448		8,448	\$1.57	\$159,160
WEST HI EXPLOR ACAD-PCS	205	28	177	73	95	18,859		18,859	\$1.57	\$355,304
<b>Total Schools</b>	<b>10,431</b>	<b>5,580</b>	<b>3,412</b>			<b>731,480</b>	<b>242,104</b>	<b>489,376</b>		<b>\$10,287,846</b>

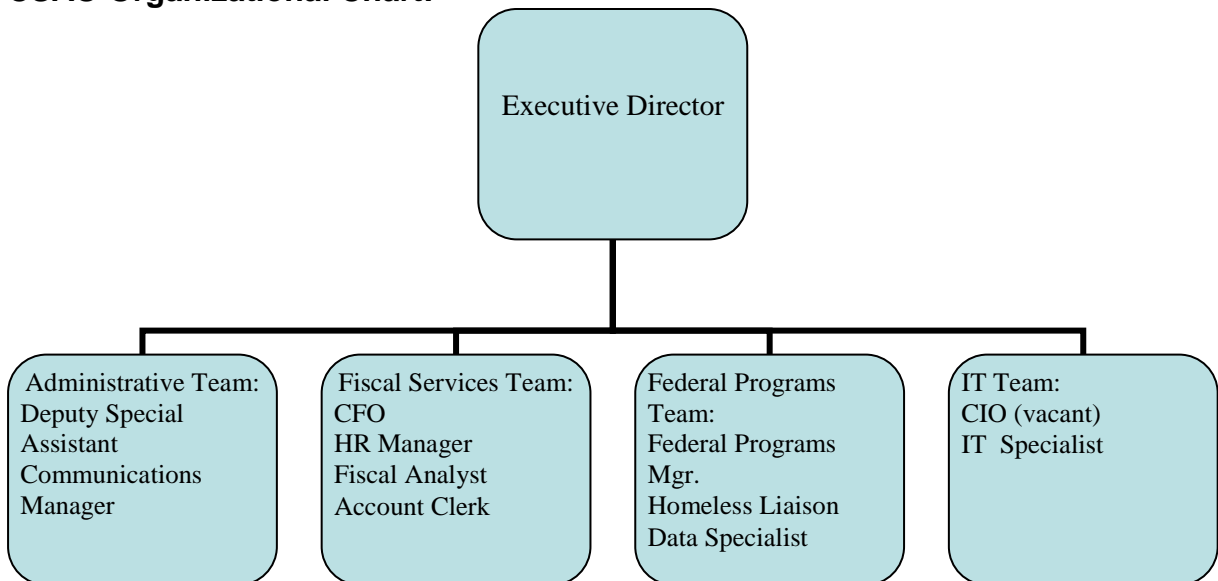
## Organizational Charts:

### Charter Schools System Organizational Chart:



The dashed line linking the CSRP with the 31 Public Charter Schools is indicative of the autonomy of the charter schools. While the CSRP may hold the charter schools accountable for academic, administrative and financial success, the charter schools are largely autonomous in deciding how these goals are to be achieved.

### CSAO Organizational Chart:



Department of Education - Charter Schools  
Department-Wide Budget Summary

Table 1

Fiscal Year 2012				
Act 164/11 Appropriation	Restriction	Emergency Appropriation	Total FY12	MOF
\$ 59,680,071.00	\$ (1,281,083.00)		\$ 58,398,988.00	A
			\$ -	B
			\$ -	N
			\$ -	R
			\$ -	S
			\$ -	T
			\$ -	U
			\$ -	V
			\$ -	W
			\$ -	X
\$ 59,680,071.00	\$ (1,281,083.00)	\$ -	\$ 58,398,988.00	Total
Fiscal Year 2013				
Act 164/11 Appropriation	Reductions	Additions	Total FY13	MOF
\$ 63,007,613.00	\$ (1,758,004.00)		\$ 61,249,609.00	A
			\$ -	B
			\$ -	N
			\$ -	R
			\$ -	S
			\$ -	T
			\$ -	U
			\$ -	V
			\$ -	W
			\$ -	X
\$ 63,007,613.00	\$ (1,758,004.00)	\$ -	\$ 61,249,609.00	Total

Department of Education - Charter Schools  
Prioritized List of Functions

Table 2

<u>Pri #</u>	<u>Description of Function</u>	<u>Activities</u>	<u>Prog ID(s)</u>	<u>Statutory Reference</u>
1	Instructional Services including Kindergarten through Grade 12 classroom instruction for regular students and special education services for students with disabilities.	Primarily direct classroom instruction including instructional technology services, textbooks and instructional materials and professional development for instructional staff.	EDN600	302B
2	Pupil Services	Primarily the following activities - home-to-school transportation, food services, counseling, health services and student athletics.	EDN600	302B
3	Operation & Maintenance of Facilities	Utilities, repair and maintenance, custodial services, rent/lease of facilities.	EDN600	302B
4	Administration	Local school board activities, school leadership, business/accounting services, personnel services, information management and technology services (non-instructional).	EDN600	302B
5	Community Services	Disemnation activities, community outreach activities.	EDN600	302B



Department of Education - Charter Schools  
Resources by Program ID

Table 3

<u>Prog ID</u>	<u>Program Title</u>	<u>MOF</u>	<u>As budgeted in Act 164/11 (FY12)</u>			<u>Governor's Submittal (FY13)</u>			<u>Percent Change of \$\$\$</u>
			<u>Pos (P)</u>	<u>Pos (T)</u>	<u>\$\$\$</u>	<u>Pos (P)</u>	<u>Pos (T)</u>	<u>\$\$\$</u>	
EDN 600	Charter Schools	A	-	-	\$ 59,680,071	-	-	\$ 61,249,609	2.6%
EDN 600	Charter Schools	C	-	-	\$ 2,118,000	-	-	\$ -	-100.0%

Department of Education - Charter Schools  
 Current Year (FY12) Restrictions

Table 4

<u>Prog ID</u>	<u>MOF</u>	<u>Restriction \$\$\$</u>	<u>Percent of Act 164/11 Appropriation</u>	<u>Impact</u>
EDN600	A	\$ 1,281,083	2.2%	Labor savings adjustment. The impact of this restriction was to reduce the per pupil amounts provided to charter schools from \$5,867 to \$5,734.94. Because charter schools are administered by their local school boards decisions regarding program cuts necessary to adjust to this restriction were made individually by each school.

Department of Education - Charter Schools  
Proposed Budget Reductions

Table 5

<u>Request Category</u>	<u>Prog ID</u>	<u>Description of Reduction</u>	<u>Impact of Reduction</u>	<u>MOF</u>	<u>Pos (P) FY13</u>	<u>Pos (T) FY13</u>	<u>\$\$\$\$ FY13</u>	<u>Carry-over? (Y/N)</u>
LS	EDN600	Labor Savings	Reduction in operational per pupil funding for all charter schools. Individual program cuts made by each charter school depends on local decisions.	A			\$ 1,304,575	Y
PR	EDN600	Specific Program Adjustments	Reduction in operational per pupil funding for all charter schools. Individual program cuts made by each charter school depends on local decisions.	A			\$ 377,421	N
O	EDN600	To equalize charter school per pupil funding with DOE per pupil funding	Reduction in operational per pupil funding for all charter schools. Individual program cuts made by each charter school depends on local decisions.	A			\$ 76,008	N

Department of Education - Charter Schools  
Proposed Supplemental Year Additions

Table 6

<u>Request Category</u>	<u>Prog ID</u>	<u>Description of Addition</u>	<u>Explanation</u>	<u>MOF</u>	<u>Pos (P) FY13</u>	<u>Pos (T) FY13</u>	<u>\$\$\$ FY13</u>
NONE							

Department of Education - Charter Schools  
Non-General Fund Balances

Table 7

<u>Name of Fund</u>	<u>Statutory Reference</u>	<u>MOF</u>	<u>Beginning FY12 Unencumbered Cash Balance</u>	<u>Estimated FY12 Revenues</u>	<u>Estimated FY12 Expenditures and Encumbrances</u>	<u>Estimated FY12 Net Transfers</u>	<u>Estimated FY12 Ending Unencumbered Cash Balance</u>	<u>Balance in Excess of Program Needs</u>
734 - NACSA CSRP Grant		B	\$ -	\$ 5,000	\$ 5,000	\$ -	\$ -	\$ -
734 - Bank Account Analysis Revenue		W	\$ -	\$ 300	\$ 300	\$ -	\$ -	\$ -
734 - Miscellaneous		W	\$ -	\$ 4,100	\$ 4,100	\$ -	\$ -	\$ -
149 - Friends of Waialae School		DON	\$ 406	\$ 18,500	\$ 18,906	\$ -	\$ -	\$ -
149 - Donations		DON	\$ 164,856	\$ 10,000	\$ 150,000		\$ 24,856	\$ 24,856
149 - Students/Parents		W	\$ 27,576	\$ 115,000	\$ 135,000	\$ -	\$ 7,576	\$ 7,576
275 - Ho'okako'o Funding			\$ 234,344	\$ 1,300,000	\$ 1,534,344	\$ -	\$ -	\$ -
394 - Ho'okāko'o	302b		\$ -	\$ 420,000	\$ 420,000		\$ -	\$ -
397 - Kamehameha Schools		Don	\$ -	\$ 375,000	\$ 375,000		\$ -	
397 - OHA		Don	\$ 76,220	\$ -	\$ 76,220		\$ -	
397 - School Store		W	\$ 170,723	\$ 10,000	\$ 25,000		\$ 155,723	
397 - Contributions		Don	\$ 17,356	\$ 100			\$ 17,456	
397 - Lunch Collection		W	\$ -	\$ 30,000	\$ 30,000		\$ -	
399 - Donation		DON	\$ 328		\$ 328		\$ -	\$ -
399 - School Fair		W	\$ 1,538		\$ 1,538		\$ -	\$ -
399 - Lab Fees		W	\$ 7,787		\$ 7,787		\$ -	\$ -
399 - Hauula School		DON	\$ 72		\$ 72		\$ -	\$ -
399 - Hi Preparatory School		DON	\$ 38		\$ 38		\$ -	\$ -
399 - Holualoa School		DON	\$ 188		\$ 188		\$ -	\$ -
399 - Jack's Hawaii		DON	\$ 548		\$ 548		\$ -	\$ -
399 - John Wilson School		DON	\$ 269		\$ 269		\$ -	\$ -
399 - Kamehameha Schools		DON	\$ 283		\$ 283		\$ -	\$ -
399 - Kamiloki School		DON	\$ 110		\$ 110		\$ -	\$ -
399 - Keliikuli School		DON	\$ 201		\$ 201		\$ -	\$ -
399 - Konawaena School		DON	\$ 194		\$ 194		\$ -	\$ -
399 - Small World School		DON	\$ 150		\$ 150		\$ -	\$ -
399 - Hawaii Titanium		DON	\$ 200		\$ 200		\$ -	\$ -
399 - E-Script		DON	\$ 140		\$ 140		\$ -	\$ -
411 - Ho'okako'o Funding		DON	\$ 65,993	\$ 600,000	\$ 665,993		\$ -	
411 - Reversal Analysis Credit		DON	\$ 4,669	\$ 4,000	\$ -		\$ 8,669	
411 - School Sales		W	\$ 935	\$ 1,000	\$ 1,935		\$ -	
411 - Fees Paid to School		W	\$ 591	\$ 1,100	\$ 1,241		\$ 450	
411 - Food Service ~ Cash Sales		W	\$ 15,922	\$ 56,400	\$ 72,322		\$ -	
411 - Darryl Arizo Donation		DON	\$ 79	\$ -	\$ 79		\$ -	
411 - American Savings Bank ~ Bank for Education		DON	\$ 350	\$ -	\$ 350		\$ -	
411 - Anonymous Private Donation		DON	\$ 27	\$ -	\$ 27		\$ -	
541 - Student Supply Fees		W	\$ -	\$ 15,500	\$ 15,500		\$ -	\$ -

Department of Education - Charter Schools  
Non-General Fund Balances

Table 7

Name of Fund	Statutory Reference	MOF	Beginning FY12	Estimated	Estimated FY12	Estimated FY12	Estimated FY12 Ending	Balance in Excess of
			Unencumbered Cash Balance	FY12 Revenues	Expenditures and Encumbrances	Net Transfers	Unencumbered Cash Balance	Program Needs
541 - Uniform Sales		W	\$ -	\$ 8,000	\$ 8,000		\$ -	\$ -
541 - Lunch/Breakfast Fees		W	\$ -	\$ 40,000	\$ 40,000		\$ -	\$ -
541 - Snack sales		W	\$ -	\$ 2,000	\$ 2,000		\$ -	\$ -
541 - Fieldtrips		W	\$ -	\$ 15,000	\$ 15,000		\$ -	\$ -
541 - NSF/Late pickup Fees		W	\$ -	\$ 500	\$ 500		\$ -	\$ -
541 - interest		W	\$ -	\$ 1,000	\$ 1,000		\$ -	\$ -
541 - Miscellaneous Donation		DON	\$ -	\$ 1,000	\$ 1,000		\$ -	\$ -
541 - School Fundraising		W	\$ -	\$ 5,000	\$ 5,000		\$ -	\$ -
542 - Kamehameha Schools Ho'olako Like funds		Don	\$ -	\$ 369,000	\$ 369,000		\$ -	\$ -
542 - Kamehameha Schools Accreditation funds		Don	\$ -	\$ 123,000	\$ 123,000		\$ -	\$ -
542 - OHA funds		Don	\$ -	\$ -	\$ -		\$ -	\$ -
542 - Misc. revenue (e.g. Student fees, special events, uniforms, meals, bank interest)		W	\$ -	\$ 21,500	\$ 21,500		\$ -	\$ -
544 - Summer School		W	\$ 5.00	\$ 28,000	\$ 28,000	\$ -	\$ 5	\$ -
544 - General:Driver's Ed, Computer Fee		W	\$ -	\$ 3,535	\$ 3,535	\$ -	\$ -	\$ -
544 - Book Sale		W	\$ -	\$ 600	\$ 600	\$ -	\$ -	\$ -
546 - Individual Donations		DON	\$ -					
546 - Student Lunch Fees		W	\$ -	\$ 13,350	\$ 13,350		\$ -	\$ -
546 - Student General Fees		W	\$ -	\$ 12,708	\$ 12,708		\$ -	\$ -
546 - special Events		B	\$ -	\$ 2,400	\$ 2,400		\$ -	\$ -
546 - Interest		B	\$ -	\$ 700	\$ 700		\$ -	\$ -
546 - Ka Huli O Haloa - Kamehameha Schools Ho`olako Like Grant		DON	\$ -	\$ 149,000	\$ 149,000		\$ -	\$ -
546 - Ka Huli O Haloa - Kamehameha Schools Kui O Ka Lono Grant		DON	\$ -	\$ 50,250	\$ 50,250		\$ -	\$ -
547 - Kamehameha Schools Ho'olako Like funds		Don	\$ -	\$ 196,500	\$ 196,500		\$ -	\$ -
547 - Kamehameha Schools Accreditation funds		Don	\$ -	\$ 135,500	\$ 135,500		\$ -	\$ -
547 - Kamehameha Schools Leadership Development funds		Don	\$ -	\$ -	\$ -		\$ -	\$ -
547 - Kamehameha Schools Professional Development funds		Don	\$ -	\$ -	\$ -		\$ -	\$ -

Department of Education - Charter Schools  
Non-General Fund Balances

Table 7

Name of Fund	Statutory Reference	MOF	Beginning FY12 Unencumbered Cash Balance	Estimated FY12 Revenues	Estimated FY12 Expenditures and Encumbrances	Estimated FY12 Net Transfers	Estimated FY12 Ending Unencumbered Cash Balance	Balance in Excess of Program Needs
547 - OHA funds		Don	\$ -	\$ -	\$ -		\$ -	\$ -
547 - Misc. revenue (e.g. Student fees, special events, uniforms, meals, bank interest)		W	\$ -	\$ 18,905	\$ 18,905		\$ -	\$ -
548 - Student Supply Fee		W	\$ -	7520	\$ 7,520		\$ -	\$ -
548 - Interest		W	\$ -	4000	\$ 4,000		\$ -	\$ -
548 - Private Grants		B	\$ -	30000	\$ 30,000		\$ -	\$ -
548 - School Fundraising and Unrestricted Donations		DON	\$ -	213000	\$ 213,000		\$ -	\$ -
560 - Unrestricted Donation		DON	\$ 1,147		\$ 1,147		\$ -	
560 - Fundraising Mini Grant		DON	\$ 17,894	\$ 900	\$ 9,500		\$ 9,294	\$ 9,294
560 - Bookfair		W	\$ 527		\$ 550		\$ (23)	
560 - Middle School Theater		DON	\$ 260		\$ 275		\$ (15)	
560 - Music Program		DON	\$ 100		\$ 150		\$ (50)	
560 - 8th Grade Kahoolawe		W	\$ 2,177		\$ 2,875		\$ (698)	
560 - Recycling		DON	\$ 127		\$ 150		\$ (23)	
560 - Walkathon		DON	\$ 3,936		\$ 4,000		\$ (64)	
560 - T-shirt sales		W	\$ (517)	\$ 550	\$ 50		\$ (17)	
560 - Playground Cover		DON	\$ 2,920		\$ 5,000		\$ (2,080)	
560 - After School Program		W	\$ 604	\$ 6,000	\$ 6,700		\$ (96)	
560 - Student Council		DON	\$ 1,317		\$ 300		\$ 1,017	\$ 1,017
560 - WAVOC		W	\$ 926		\$ 930		\$ (4)	
560 - Warner Class Fundraiser		W	\$ 312		\$ 350		\$ (38)	
560 - Yearbook		W	\$ (764)	\$ 900	\$ 140		\$ (4)	
560 - Keakealani Restricted		DON	\$ 1,000		\$ -		\$ 1,000	\$ 1,000
560 - Building Fund Restricted		DON	\$ 12,000		\$ -		\$ 12,000	\$ 12,000
562 - School Fees		W	\$ -	\$ 23,520	\$ 23,520	\$ -	\$ -	\$ -
562 - Kama'aha Education Initiative formerly known as Kako'o Ka 'Umeke, Inc.		DON	\$ 102,860	\$ 556,700	\$ 659,560	\$ -	\$ -	\$ -
563 - Kamehameha		DON	\$ -	\$ 340,500	\$ 340,500	\$ -	\$ -	\$ -
563 - School Fees		W		\$ 18,160	\$ -	\$ 15,000	\$ 15,000	\$ 3,160
554- Project Give- Singer Foundation		DON	\$ -	\$ 2,000	\$ 2,000		\$ -	
554 - Monsanto Grant		DON	\$ -	\$ 1,998	\$ 1,998		\$ -	
554 - Chevron Education Fund		DON	\$ -	\$ 800	\$ 800			
554 - Jones Lang LaSalle Americas, INC		DON	\$ -	\$ 500	\$ 500		\$ -	
554 - Escrip		DON	\$ -	\$ 800	\$ 800		\$ -	

Department of Education - Charter Schools  
Non-General Fund Balances

Table 7

<u>Name of Fund</u>	<u>Statutory Reference</u>	<u>MOF</u>	<u>Beginning FY12 Unencumbered Cash Balance</u>	<u>Estimated FY12 Revenues</u>	<u>Estimated FY12 Expenditures and Encumbrances</u>	<u>Estimated FY12 Net Transfers</u>	<u>Estimated FY12 Ending Unencumbered Cash Balance</u>	<u>Balance in Excess of Program Needs</u>
554 - Student Activities		W		\$ 14,000	\$ 14,000		\$ -	
554 - Parent donations		W	\$ -	\$ 400	\$ 400		\$ -	
554 - Lunch payments		W	\$ -	\$ 85,000	\$ 185,000		\$ -	
554 - MEDB, Inc		DON	\$ -	\$ 650	\$ 650			
398 - National School Lunch Program-Student Fees		W	\$ -	\$ 2,497	\$ 2,497		\$ -	\$ -
398 - Other Program Fees-Uniforms		W	\$ -	\$ 1,326	\$ 1,326		\$ -	\$ -
396 - CPCS A+ fees		W	\$ -	\$ 3,875	\$ 3,875		\$ -	
396 - Transportation fees		W	\$ -	\$ 2,000	\$ 2,000		\$ -	
396 - Donations		W	\$ 2,609	\$ 1,400	\$ 4,009		\$ -	
396 - Yearbook Sales		W	\$ -	\$ 3,000	\$ 3,000		\$ -	
396 - Nutrition Funding fees		W	\$ -	\$ 11,000	\$ 11,000		\$ -	
396 - Interest/Investment income		B	\$ 9,249	\$ 2,600	\$ 11,849		\$ -	
396 - sublease		B	\$ -	\$ 3,000	\$ 3,000		\$ -	
396 - Fundraising		W	\$ -	\$ 3,000	\$ 3,000		\$ -	
396 - NOAA BWET Grant		B	\$ -	\$ -	\$ -		\$ -	
396 - Hawaii Youth Network		B	\$ -	\$ -	\$ -		\$ -	
396 - Pizza Hut		B	\$ -	\$ -	\$ -		\$ -	
564 - Kamehameha Schools Funding			\$ -	\$ 165,000	\$ 165,000	\$ -	\$ -	\$ -
549 - Ho'olako Like		Don		\$ 142,500	\$ 142,500			
549 - OHA		Don		\$ -	\$ -			
549 - Student Fees		W		\$ 975	\$ 975			



Department of Education - Charter Schools  
 Emergency Appropriation Requests

Table 8

<u>Prog ID</u>	<u>Description of Request</u>	<u>MOF</u>	<u>Pos (P) FY12</u>	<u>Pos (T) FY12</u>	<u>\$\$\$ FY12</u>
	None				

Department of Education - Charter Schools  
Budget Decisions

Table 9

Prog ID	Description	MOF	Initial Department Request			Budget and Finance Recommendation			Governor's Decision		
			Pos (P)	Pos (T)	\$\$\$	Pos (P)	Pos (T)	\$\$\$	Pos (P)	Pos (T)	\$\$\$
EDN600	Labor Savings	A			(1,304,575.00)			\$ (1,304,575.00)			(1,304,575.00)
EDN600	Program Review Savings	A			(377,421.00)			\$ (377,421.00)			(377,421.00)
EDN600	Operational Funding Formula Adjustment	A			2,725,342.00			\$ (76,008.00)			(76,008.00)
EDN600	Facilities Funding Formula Request	A			10,287,846.00			\$ -			-

Department of Education - Charter Schools  
Program Review Proposals

Table 10

Prog ID	Description	MOF	Budget and Finance Proposal			Department Proposal			Governor's Final Decision		
			Pos (P)	Pos (T)	\$\$\$	Pos (P)	Pos (T)	\$\$\$	Pos (P)	Pos (T)	\$\$\$
EDN600	Enrollment over-appropriation account pursuant to HRS - 302B-12(d)(2)(B)	A			\$ -			2,906,302.00			-
EDN600	Labor Savings FY2011-12	A			\$ 1,281,083.00			-			1,281,083.00
	Labor Savings FY 2012-13	A			\$ 1,304,575.00			1,304,575.00			1,304,575.00
	Program Review Savings FY 2012-13	A			\$ 377,421.00			377,421.00			377,421.00
	Funding Formula Adjustment	A			\$ 76,008.00			-			76,008.00

Department of Education - Charter Schools  
Position Vacant as of November 30

Table 11

<u>Prog ID</u>	<u>Date of Vacancy</u>	<u>Position Number</u>	<u>Position Title</u>	<u>SR Level</u>	<u>BU Code</u>	<u>Temp Perm (T/P)</u>	<u>FTE</u>	<u>MOF</u>	<u>Budgeted Amount</u>	<u>Actual Salary Last Paid</u>	<u>Exempt (Y/N)</u>	<u>Authority to Hire (Y/N)</u>	<u>Occupied by 89 Day Hire (Y/N)</u>
15137/149	7/25/2011	C1037	Technology Facilitator	W0403	5	P	1.00	A	\$ 54,305	\$ 54,305	N	Y	N
15137/149	10/1/2011	59926	Account Clerk II	SR08/A	3	P	1.00	A	\$ 27,828	\$ 27,828	N	Y	N
15137/275	7/1/2011	N/A	Special Education Director		5	T	1.00	A	\$ 87,000	\$ -	N	Y	N
15137/275	7/1/2011	N/A	Curriculum Coach		5	T	1.00	A	\$ 60,000	\$ -	N	Y	N
15137-546	11/29/2011	N/A	Educational Assistant	SR8B	3	P	1.00	A	\$ 25,620	\$ 10,528	N	Y	N
15137/557		801224	Educ Asst	B SR12	3	T	1.00				N		Y
15137/562	8/1/2011		NWEA Proctor		3	T	1.00	DON	\$ 28,000	\$ -	Y	Y	N
15137/554	9/16/2011	N/A	Special Education Teacher	T02-05	5	P	1.00	A	\$ 48,008	\$ 9,313	N	Y	N
15137/554	7/1/2011	N/A	Part Time Clerk	SR04G	3	P	0.25	A	\$ 6,384	\$ -		Y	N

Department of Education - Charter Schools  
Personnel Separations

Table 12

<u>Prog ID/Org</u>	<u>Separation Date</u>	<u>Position Number</u>	<u>Position Title</u>	<u>SR Level</u>	<u>BU Code</u>	<u>T/P</u>	<u>MOF</u>	<u>Budgeted FTE</u>	<u>Budgeted Salary</u>	<u>Actual FTE</u>	<u>Actual Salary</u>
15137/149	7/25/2010	C1037	TEACHER	W0406	5	P	A	1.00	\$ 52,212	1.00	\$ 52,212
15137/149	7/25/2010	C1003	TEACHER	W0205	5	P	A	1.00	\$ 48,744	1.00	\$ 48,744
15137/149	7/25/2010	C1006	TEACHER	W0206	5	P	A	1.00	\$ 50,208	1.00	\$ 50,208
15137/149	7/25/2010	C1038	TEACHER	W0206	5	P	A	1.00	\$ 50,208	1.00	\$ 50,208
15137/149	7/25/2010	C1035	TEACHER	W0205	5	P	A	1.00	\$ 48,744	1.00	\$ 48,744
15137/149	6/30/2011	C1034	TEACHER	W0611	5	P	A	1.00	\$ 69,396	1.00	\$ 69,396
15137/149	7/24/2011	C1003	TEACHER	W0206	5	P	A	1.00	\$ 50,208	1.00	\$ 50,208
17131/149	7/24/2011	C1008	TEACHER	W0206	5	P	A	1.00	\$ 50,208	1.00	\$ 50,208
15137/149	7/24/2011	C1027	TEACHER	W0206	5	P	A	1.00	\$ 50,208	1.00	\$ 50,208
15137/149	7/24/2011	C1038	TEACHER	W0204	5	P	A	1.00	\$ 47,328	1.00	\$ 47,328
15137/149	8/31/2011	C1038	TEACHER	W0205	5	P	A	1.00	\$ 50,000	1.00	\$ 54,863
15137/149	9/2/2011	C1039	TEACHER	W0206	5	P	A	1.00	\$ 50,000	1.00	\$ 50,208
15137/149	9/9/2011	C1017	TEACHER	W0106	5	P	A	1.00	\$ 46,488	1.00	\$ 46,488
15137/275	5/27/2011	C3049	Elementary Teacher	T0205	5	T	A	1.00	\$ 45,000	1.00	\$ 43,157
15137/275	5/27/2011	C3083	Secondary Teacher	T0305	5	T	A	1.00	\$ 45,000	1.00	\$ 46,609
15137/275	5/27/2011	C3073	Elementary Teacher	T0305	5	T	A	1.00	\$ 45,000	1.00	\$ 46,609
15137/275	5/27/2011	C3098	Elementary Teacher	T0205	5	T	A	1.00	\$ 45,000	1.00	\$ 43,157
15137/275	5/27/2011	C3069	Elementary Teacher	T0205	5	T	A	1.00	\$ 45,000	1.00	\$ 43,157
15137/275	5/27/2011	C3045	Elementary Teacher	T0305	5	T	A	1.00	\$ 45,000	1.00	\$ 46,609
15137/275	5/27/2011	C3062	Secondary Teacher	A0201	5	T	A	1.00	\$ 45,000	1.00	\$ 40,567
15137/275	5/27/2011	C3047	Counselor	T0305	5	T	A	1.00	\$ 45,000	1.00	\$ 46,609
15137/275	5/27/2011	C3075	Elementary Teacher	T0201	5	T	A	1.00	\$ 45,000	1.00	\$ 32,713
15137/275	5/27/2011	C3074	Elementary Teacher	T0205	5	T	A	1.00	\$ 45,000	1.00	\$ 43,157
15137/275	5/27/2011	C3045	Counselor	T0305	5	T	A	1.00	\$ 45,000	1.00	\$ 46,609
15137/275	5/27/2011	C3029	Special Education Teacher	T0201	5	T	A	1.00	\$ 45,000	1.00	\$ 32,713
15137/275	5/27/2011	C8045	Elementary Teacher	T0305	5	T	A	1.00	\$ 45,000	1.00	\$ 46,609
15137/275	5/27/2011	C3052	Elementary Teacher	T0205	5	T	A	1.00	\$ 45,000	1.00	\$ 43,157
15953/275	5/27/2011	C3081	Gen Ed Article VI Teacher	T0205	5	T	A	1.00	\$ -	1.00	\$ 43,157
15137/275	5/27/2011	C3072	Elementary Teacher	T0305	5	T	A	1.00	\$ 45,000	1.00	\$ 46,609
15953/275	5/27/2011	C3080	Gen Ed Article VI Teacher	T0205	5	T	A	1.00	\$ -	1.00	\$ 43,157
15953/275	6/26/2011	C3082	Gen Ed Article VI Teacher	T0305	5	T	A	1.00		1.00	\$ 46,609

Department of Education - Charter Schools  
Personnel Separations

Table 12

<u>Prog ID/Org</u>	<u>Separation Date</u>	<u>Position Number</u>	<u>Position Title</u>	<u>SR Level</u>	<u>BU Code</u>	<u>T/P</u>	<u>MOF</u>	<u>Budgeted FTE</u>	<u>Budgeted Salary</u>	<u>Actual FTE</u>	<u>Actual Salary</u>
17131/275	2/24/2011	55029	Educational Assistant	SR10D	3	T	A	1.00		1.00	\$ 29,127
15137/275	5/27/2011	C3053	Elementary Teacher	T0305	5	T	A	1.00	\$ 45,000	1.00	\$ 46,609
15137/275	5/27/2011	C3065	Elementary Teacher	T0205	5	T	A	1.00	\$ 45,000	1.00	\$ 43,157
17131/275	5/27/2011	C3099	Special Education Teacher	T0205	5	T	A	1.00		1.00	\$ 43,157
15137/275	5/27/2011	C3066	Elementary Teacher	T0305	5	T	A	1.00	\$ 45,000	1.00	\$ 46,609
15953/275	5/27/2011	C3109	Gen Ed Article VI Teacher	T0305	5	T	A	1.00		1.00	\$ 46,609
17131/275	5/27/2011	C3111	Special Education Teacher	T0201	5	T	A	1.00		1.00	\$ 32,713
15137/394	12/30/2009	C5270	Elem. Teacher	T0708	5		A	1.00	\$ 5,061	1.00	\$ 5,061
15137/394	3/31/2009	59538	School Custodian II	BC02A	1		A	1.00	\$ 2,769	1.00	\$ 2,769
15137/394	7/27/2010	C5212	Elem. Teacher	T0507	5		A	1.00	\$ 4,457	1.00	\$ 4,457
15137/394	7/27/2010	C5184	Counselor	T0301	5		A	1.00	\$ 2,944	1.00	\$ 2,944
15137/394	7/27/2010	C5278	Secondary Teacher	T0410	5		A	1.00	\$ 4,683	1.00	\$ 4,683
15137/394	7/27/2010	C5233	Secondary Teacher	T0203	5		A	1.00	\$ 2,892	1.00	\$ 2,892
15137/394	5/10/2010	55483	Clerk III	SR08B	3		A	1.00	\$ 2,225	1.00	\$ 2,225
15137/394	7/27/2010	C5200	Secondary Teacher	T0407	5		A	1.00	\$ 4,286	1.00	\$ 4,286
15137/397	1/28/2011	N/A	Secondary Teacher	T0203	5	P	A	1.00	\$ 34,705	1.00	\$ 20,245
15137/397	6/30/2011	N/A	Elementary Teacher	T0203	5	P	A	1.00	\$ 34,705	1.00	\$ 34,705
15137/397	6/30/2011	N/A	Counselor/Social Worker	SR12C	13	P	A	1.00	\$ 43,824	1.00	\$ 43,824
15137/397	6/30/2011	N/A	Elementary Teacher	T0208	5	P	A	1.00	\$ 47,159	1.00	\$ 47,159
15137/411	07/26/2011	C6017	Teacher, Grade 1	T07-10	5	T	A	1.00	\$ 58,300	1.00	\$ 71,063
15137/411	07/26/2011	C411102	Teacher, Performing Arts	T05-06	5	T	A	1.00	\$ 53,000	1.00	\$ 43,157
15137/411	07/26/2011	C6023	Teacher, Grade 1	T07-08	5	T	A	1.00	\$ 58,300	1.00	\$ 66,984
18902/411	07/26/2011	C6016	Teacher, Curriculum Coordina	T07-09	5	T	N	1.00	\$ 63,000	1.00	\$ 68,993
15137/411	04/26/2011	19079	Custodian	BC02A	1	P	A	1.00	\$ 30,421	1.00	\$ 33,228
18902/466	1/21/2011	N/A	ELEMENTARY TEACHER	T03-08	5	P	N	1.00	\$ 50,931	1.00	\$ 10,745
DON/466	1/21/2011	N/A	ELEMENTARY TEACHER	T03-08	5	P	N	1.00	\$ 40,186	1.00	\$ 19,813
15137/541	7/25/2010	n/a	Teacher	T03-07	5	P	A	1.00	\$ 53,090	1.00	\$ 17,026
15137/541	7/25/2010	C1050	Teacher	T03-07	5	p	A	1.00	\$ 53,090	1.00	\$ -
15137/541	7/27/2010	C1137	Teacher	T02-02	5	P	A	0.50	\$ 17,100	0.50	\$ -
15137/541	7/27/2010	C1045	Teacher	T04-08	5	p	A	1.00	\$ 52,968	1.00	\$ -
15137/541	12/17/2010	n/a	EA II	n/a	3	P	A	0.50	\$ 10,835	0.50	\$ 3,048

Department of Education - Charter Schools  
Personnel Separations

Table 12

<u>Prog ID/Org</u>	<u>Separation Date</u>	<u>Position Number</u>	<u>Position Title</u>	<u>SR Level</u>	<u>BU Code</u>	<u>T/P</u>	<u>MOF</u>	<u>Budgeted FTE</u>	<u>Budgeted Salary</u>	<u>Actual FTE</u>	<u>Actual Salary</u>
15137/541	7/31/2011	n/a	Teacher	T06/07	5	p	A	1.00	\$ 59,719	1.00	\$ 59,719
15137/541	7/31/2011	n/a	Teacher	T03/09	5	p	A	1.00	\$ 56,324	1.00	\$ 56,324
15137/541	7/31/2011	C8001	Article VI	T07/10	5	P	A	1.00	\$ 64,427	1.00	\$ 64,427
15137/541	7/31/2011	C1047	Teacher	T02/07	5	P	A	1.00	\$ 49,157	1.00	\$ 49,157
15137/541	7/31/2011	C1135	Teacher	T03/02	5	p	A	0.75	\$ 39,069	0.75	\$ 39,069
15137/541	7/31/2011	n/a	Teacher	T02/02	5	P	A	0.50	\$ 16,604	0.50	\$ 16,604
15137/541	8/5/2011	n/a	Clerk	n/a	3	P	A	1.00	\$ 27,040	1.00	\$ 27,040
15137/541	10/31/2011	C1136	Teacher	n/a	5	p	A	0.75	\$ 18,348	0.75	\$ 18,348
15137/542	8/1/2011	n/a	ERM		05	P	A	1.00	\$ 71,123	1.00	\$ 71,123
15137/542	8/15/2011	n/a	Counselor/Teacher		05	P	A	1.00	\$ 42,407	1.00	\$ 42,407
15137/543	2/18/2011	00014	Secondary Teacher	N/A	05	P	A	1.00	\$ 47,532	1.00	\$ 47,532
15137/543	4/12/2011	00130	IT Specialist I	N/A	13	P	A	1.00	\$ 36,024	1.00	\$ 36,024
15137/543	7/17/2011	00076	Secondary Teacher	N/A	05	P	A	1.00	\$ 42,125	1.00	\$ 42,125
15137/543	7/31/2011	00003	Secondary Teacher	N/A	05	P	A	1.00	\$ 48,008	1.00	\$ 48,008
15137/543	7/31/2011	00059	Secondary Teacher	N/A	05	P	A	1.00	\$ 35,329	1.00	\$ 35,329
15137/543	7/31/2011	00062	Vice Principal	N/A	06	P	A	1.00	\$ 65,000	1.00	\$ 65,000
15137/543	7/31/2011	00128	Secondary Teacher	N/A	05	P	A	1.00	\$ 46,609	1.00	\$ 46,609
15137/543	7/31/2011	00066	Secondary Teacher	N/A	05	P	A	0.60	\$ 21,197	0.60	\$ 21,197
15137/543	7/31/2011	00069	Secondary Teacher	N/A	05	P	A	0.60	\$ 21,197	0.60	\$ 21,197
15137/543	7/31/2011	00030	Secondary Teacher	N/A	05	P	A	1.00	\$ 49,452	1.00	\$ 49,452
15137-544	7/25/2011	C1100	Elementary Teacher	T02-07	5	P	A	1.00	\$ 45,785.04	1.00	\$ 45,785
15137-544	7/25/2011	C1146	Secondary Teacher	T03-01	5	P	A	1.00	\$ 35,328.96	1.00	\$ 35,329
15137-544	7/26/2011	C1110	Secondary Teacher	T07-08	5	P	A	1.00	\$ 60,729.12	1.00	\$ 60,729
15137-544	7/26/2011	C8017	Secondary Teacher	T02-05	5	P	A	1.00	\$ 43,157.04	1.00	\$ 43,157
15137-544	7/26/2011	C1101	Elementary Teacher	T02-47	5	P	A	1.00	\$ 51,426.00	1.00	\$ 51,426
15137-544	7/25/2011	30055	Secondary Teacher	T03-05	5	P	A	1.00	\$ 46,609.00	1.00	\$ 46,609
15137/546	10/1/2011	N/A	Community Resource Specialist - Family Support Specialist	SRNA	3	P	A/don	0.80	\$ 35,486	0.80	\$ 9,006
15137-546	11/29/2011	N/A	Educational Assistant	SR10A	3	P	A	1.00	\$ 25,620	1.00	\$ 10,528
15137/546	7/27/2011	N/A	Math Advisor	T05-05	5	P	don	1.00	\$ 43,291	1.00	\$ 36,383

Department of Education - Charter Schools  
Personnel Separations

Table 12

<u>Prog ID/Org</u>	<u>Separation Date</u>	<u>Position Number</u>	<u>Position Title</u>	<u>SR Level</u>	<u>BU Code</u>	<u>T/P</u>	<u>MOF</u>	<u>Budgeted FTE</u>	<u>Budgeted Salary</u>	<u>Actual FTE</u>	<u>Actual Salary</u>
15137-546	7/22/2011	N/A	Administrative Assistant	SRNA	3	T	A	0.50	\$ 16,640	0.50	\$ 14,208
15137-546	7/26/2011	N/A	Educational Assistant	SR10A	3	P	A	1.00	\$ 25,030	1.00	\$ 25,460
15137/546	6/3/2011	N/A	Community Resource Specialist - Mauka Lab	SRNA	3	T	don	0.40	\$ 9,600	0.40	\$ 8,719
15137/547	11/4/2011	547702	PCS Admin. Services Asst.	15	3	P	A	0.95	\$ 31,738	0.95	\$ 30,624
Federal ARRA	4/15/2011	1338	Account Clerk III	11	3	P	V	0.50	\$ 17,711	0.50	\$ 13,551
Federal ARRA	4/15/2011	N/A	General Clerical	16	3	P	V	0.50	\$ 17,711	0.50	\$ 15,736
Federal ARRA	12/31/2010	N/A	Director	10	6	P	V	1.00	\$ 109,099	1.00	\$ 109,099
KS Ho'olako L	5/31/2011	N/A	Kupuna	N/A	N/A	P	DON	0.45	\$ 12,371	0.45	\$ 12,368
15137/547	8/4/2011	3483	Educational Assistant II	10	3	P	A	0.50	\$ 19,776	0.50	\$ 19,776
KS Ho'olako L	12/15/2010	3483	Educational Assistant II	9	3	T	DON	0.50	\$ 18,000	0.25	\$ 16,332
15137/548	6/30/2011	801390	PCS Educ Asst III	SR10/A	3	T	A	1.00	\$ 23,130	1.00	\$ 23,130
15137/548	7/25/2011	C5251	Elem-Sec. Teacher	T03-06	5	T	A	1.00	\$ 48,008	1.00	\$ 48,008
15137/548	7/25/2011	C5254	Elem-Sec. Teacher	T03-05	5	T	A	1.00	\$ 46,609	1.00	\$ 46,609
15137/548	8/8/2011	116649	SASA III	SR16	3	T	A	1.00	\$ 35,064	1.00	\$ 35,064
15137/548	8/8/2011	800724	Office Clerk	SR08	3	T	A	1.00	\$ 24,648	1.00	\$ 24,648
15137/551	July-11	50520	Teacher	T03-07	5	P	V	1.00	\$ 49,448	1.00	\$ 49,448
15137/551	July-11	50520	Teacher	T02-06	5	P	V	1.00	\$ 44,452	1.00	\$ 44,452
15137/551	July-11	52310	Teacher	T02-08	5	P	V	1.00	\$ 47,158	1.00	\$ 47,158
15137/551	July-11	52260	Counselor	T03-06	5	P	V	1.00	\$ 48,008	1.00	\$ 48,008
15137/551	February-11	50000	Teacher	T02-05	5	P	V	1.00	\$ 43,157	1.00	\$ 43,157
15137/551	July-11	52260	Counselor	T03-05	5	P	V	1.00	\$ 43,157	1.00	\$ 43,157
15137/551	July-11	51165	Vice Principal	E07-10	6	P	V	1.00	\$ 101,491	1.00	\$ 101,491
15137/551	March-11	SR20	Data Proc. Systems Analyst III	SR-20	3	P	V	1.00	\$ 42,132	1.00	\$ 42,132
15137/551	July-11	50000	Teacher	T07-08	5	P	V	1.00	\$ 60,729	1.00	\$ 60,729
15137/557	7/26/2011	C5246	Gen Educ/Article VI Tchr	T03-05	5	P	A	1.00		1.00	\$ 3,884
15137/557	7/1/2011	801224	Educ Asst III	03B SF	3	T	A	1.00		1.00	\$ 2,177
15137/557	7/26/2011	C8010	Gen Educ/Article VI Tchr	T02-05	5			1.00		1.00	\$ 3,596
15137/560	10/1/2010	47472	Classroom Aide	N/A	N/A	P	A	0.78	\$ 21,302	0.78	\$ 21,302
15137/560	11/12/2010	9341	Custodian	BC02	01	P	A	0.50	\$ 16,614	0.50	\$ 16,614
15137/560	11/30/2010	22002	Business Manager	N/A	N/A	P	A	0.50	\$ 10,799	0.50	\$ 10,551



Department of Education - Charter Schools  
Personnel Separations

Table 12

<u>Prog ID/Org</u>	<u>Separation Date</u>	<u>Position Number</u>	<u>Position Title</u>	<u>SR Level</u>	<u>BU Code</u>	<u>T/P</u>	<u>MOF</u>	<u>Budgeted FTE</u>	<u>Budgeted Salary</u>	<u>Actual FTE</u>	<u>Actual Salary</u>
15137/560	3/7/2011	9341	Custodian	N/A	N/A	P	A	0.35	\$ 9,100	0.35	\$ 9,100
15137/560	8/5/2011	51033	Education Director	N/A	N/A	P	A	1.00	\$ 76,808	1.00	\$ 76,808
15137/560	8/12/2011	C5261	Article 6 Teacher	C5S9	05	P	A	1.00	\$ 55,156	1.00	\$ 55,156
15137/562	10/7/2011		School Health aide		3	T	A	1.00	\$ 30,000	1.00	\$ 30,000
15137/562	10/1/2011	C8006	Sped Teacher - K-6	T 03 05	5	T	A	1.00	\$ 45,909	1.00	\$ 45,909
15137/562	11/8/2011		Tutor - 7-12		3	T	DON	1.00	\$ 27,840	1.00	\$ 27,840
15137/563	2/14/2011	56344	FARM RESEARCH ASST - EA1	08A	3	P	A	1.00	\$ 25,668	1.00	
15137/554	7/5/2011	N/A	Special Education Teacher	T03-06	5	P	A	1.00	\$ 48,008	1.00	\$ 48,008
15137/554	9/16/2011	N/A	Special Education Teacher	T02-05	5	P	A	1.00	\$ 48,008	1.00	\$ 9,313
15137/554	6/10/2011	N/A	High School Science Teacher	T03-07	5	P	A	1.00	\$ 49,448	1.00	\$ 49,448
15137/554	6/10/2011	N/A	High School Site Administrator		5	P	A	1.00	\$ 65,000	1.00	\$ 63,679
15137/554	6/10/2011	N/A	HS Language Arts Teacher	T03-07	5	P	A	1.00	\$ 49,448	1.00	\$ 49,448
15137/554	6/10/2011	N/A	High School Math Teacher	T03-06	5	P	A	0.50	\$ 24,004	0.50	\$ 16,203
15137/554	6/10/2011	N/A	Special Education Teacher	T03-06	5	P	A	1.00	\$ 48,008	1.00	\$ 48,008
15137/554	6/10/2011	N/A	Elementary Site Administrator		5	P	A	1.00	\$ 69,930	1.00	\$ 66,699
15137/554	6/10/2011	N/A	Elementary Teacher	T03-06	5	P	A	1.00	\$ 50,000	1.00	\$ 48,008
15137/554	6/10/2011	N/A	Middle School Math Teacher	T03-08	5	P	A	1.00	\$ 53,477	1.00	\$ 50,931
15137/554	6/10/2011	N/A	MS Social Studies Teacher	T03-05	5	P	A	1.00	\$ 47,058	1.00	\$ 46,609
15137/554	12/17/2010	N/A	HS Science Teacher	T03-01	5	P	A	1.00	\$ 50,000	1.00	\$ 17,665
15137/554	3/9/2011	N/A	Educational Assistant	SR10A	3	P	A	1.00	\$ 32,279	1.00	\$ 26,030
15137/554	6/30/2011	N/A	Educational Assistant	SR16B	3	P	A	1.00	\$ 34,705	1.00	\$ 34,705
15137/554	6/30/2011	N/A	Director		5	P	A	1.00	\$ 90,000	1.00	\$ 88,200
15137/554	8/13/2010	N/A	Clerk	SR16B	3	P	A	1.00	\$ 35,064	1.00	\$ 35,064
15137/398	9/30/2011	n/a	Teacher	T03-06	5	P	A	1.00	\$ 49,448	1.00	\$ 14,841
15137/398	11/1/2011	n/a	Bus Monitor	4	3	P	A	0.50	\$ 10,075	0.50	\$ 1,772
15137/566	6/30/2011	N/a	Education Director	T02-14	5	P	A	1.00	\$ 60,000	1.00	\$ 60,000
15137/566	6/30/2011	N/a	Elementary Teacher	T-02-5	5	P	A	0.60	\$ 24,960	0.60	\$ 24,960
15137/566	12/1/2010	N/a	Elementary Teacher	T-02-5	5	P	A	0.60	\$ 24,960	0.60	\$ 24,960
15137/566	10/30/2011	N/a	Elementary Teacher	N/a	5	P	A	0.40	\$ 16,474	0.40	\$ 16,474
15137/566	6/30/2011	N/a	Educational Assistant	N/a	5	P	A	0.80	\$ 21,280	0.80	\$ 21,280
15137/561	7/28/2010	C5115	Teacher	T0307	5	P	A	1.00	\$ 49,448	1.00	\$ 49,448

Department of Education - Charter Schools  
Personnel Separations

Table 12

<u>Prog ID/Org</u>	<u>Separation Date</u>	<u>Position Number</u>	<u>Position Title</u>	<u>SR Level</u>	<u>BU Code</u>	<u>T/P</u>	<u>MOF</u>	<u>Budgeted FTE</u>	<u>Budgeted Salary</u>	<u>Actual FTE</u>	<u>Actual Salary</u>
15137/561	7/26/2010	C5316	Teacher	T0306	5	P	A	1.00	\$ 43,157	1.00	\$ 47,287
15137/396	8/18/2011	Ceridian 0	Teacher	T0202	5	T	A	1.00	\$ 33,694	1.00	\$ 5,615
15137/396	7/25/2011	Ceridian 2	Teacher	T0307	5	T	A	1.00	\$ 49,448	1.00	\$ 49,448
15137/396	10/29/2010	Ceridain 20037	Teacher	T0306	5	T	A	1.00	\$ 48,008	1.00	\$ 16,002
15137/396	7/25/2011	Ceridian 2	Teacher	T0305	5	T	A	1.00	\$ 46,609	1.00	\$ 46,609
15137/396	7/25/2011	Ceridian 2	Teacher	T0306	5	T	A	1.00	\$ 48,008	1.00	\$ 48,008
15137/396	7/25/2011	Ceridian 2	Teacher	T0305	5	T	A	1.00	\$ 46,609	1.00	\$ 46,609
15137/396	8/30/2010	Ceridain 20005	School Security	SR5F	3	T	A	1.00	\$ 27,756	1.00	\$ 4,626
15137/396	8/30/2010	Ceridain 20022	SASA	SR12C	4	T	A	1.00	\$ 32,424	1.00	\$ 11,035
15953/396	7/25/2011	C8023	Teacher	T0201	5	T	A	1.00	NA	1.00	\$ 32,713
15953/396	7/25/2011	C5126	Teacher	T0709	5	T	A	1.00	NA	1.00	\$ 62,550
15953/396	8/26/2011	C8023	Teacher	T0305	5	T	A	1.00	NA	1.00	\$ 3,884
15953/396	6/30/2011	801809	Educational Assistant	SR12A	3	T	A	1.00	NA	1.00	\$ 13,065
15137/564	8/1/2010		Curriculum and Testing Coordinator					1.00	\$ 50,000	1.00	\$ 50,000
15137/564	9/30/2010		Prejects Leader					0.50	\$ 19,000	0.50	\$ 19,000
15137/564	10/15/2010		Elementary Teacher		5			1.00	\$ 47,000	1.00	\$ 14,100
15137/564	5/15/2011		Middle and Hs Teacher		5			1.00	\$ 49,500	1.00	\$ 44,500
15137/564	8/1/2011		Elementary Teacher		5			1.00	\$ 47,000	1.00	\$ 47,000
15137/564	8/1/2011		Elementary Curriculum Coordinator					1.00	\$ 51,000	1.00	\$ 51,000
15137/564	10/19/2011		Middle and Hs Teacher		5			1.00	\$ 43,000	1.00	\$ 43,000

Department of Education - CHarter Schools  
New Hires

Table 13

<u>Prog ID/Org</u>	<u>New Hire Effective Date</u>	<u>Position Number</u>	<u>Position Title</u>	<u>SR Level</u>	<u>BU Code</u>	<u>T/P</u>	<u>MOF</u>	<u>Budgeted FTE</u>	<u>Budgeted Salary</u>	<u>Actual FTE</u>	<u>Actual Salary</u>
15137/149	7/26/2010	C1005	TEACHER	W0101	5	P	A	1.00	\$ 40,104	1.00	\$ 40,104
15137/149	7/26/2010	C1003	TEACHER	W0206	5	P	A	1.00	\$ 50,208	1.00	\$ 50,208
15137/149	7/26/2010	C1038	TEACHER	W0204	5	P	A	1.00	\$ 47,328	1.00	\$ 47,328
15137/149	7/26/2010	C1035	TEACHER	W0206+ National Board Cert	5	P	A	1.00	\$ 55,208	1.00	\$ 55,208
15137/149	7/25/2011	C1039	TEACHER	W0206	5	P	A	1.00	\$ 50,000	1.00	\$ 50,208
15137/149	7/25/2011	C1038	TEACHER	W0209	5	P	A	1.00	\$ 50,000	1.00	\$ 54,863
15137/149	7/25/2011	C1037	TEACHER	W0207	5	P	A	1.00	\$ 50,000	1.00	\$ 51,713
15137/149	7/25/2011	C1003	TEACHER	W0204	5	P	A	1.00	\$ 50,000	1.00	\$ 47,325
17131/149	7/25/2011	C8071	SPED TEACHER	W0306	5	P	A	1.00	\$ 50,000	1.00	\$ 52,216
15953/149	7/25/2011	C8072	TEACHER	W0207+ National Board Cert	5	P	A	1.00	\$ 50,000	1.00	\$ 56,713
15137/149	7/25/2011	C1006	TEACHER	W0504	5	P	A	1.00	\$ 50,000	1.00	\$ 53,236
15137/149	7/25/2011	C1022	TEACHER	W0304	5	P	A	1.00	\$ 50,000	1.00	\$ 49,218
15137/149	7/25/2011	C1027	TEACHER	W0307	5	P	A	1.00	\$ 50,000	1.00	\$ 53,783
15137/149	9/1/2011	C1038	TEACHER	W0204	5	P	A	1.00	\$ 50,000	1.00	\$ 47,325
15137/149	9/28/2011	C1039	TEACHER	W0204	5	P	A	1.00	\$ 50,000	1.00	\$ 47,325
15137/275	7/27/2010	C3055	Elementary Teacher	T0305	5	T	A	1.00	\$ 45,000	1.00	\$ 46,609
15137/275	7/27/2010	C8015	Secondary Teacher	A0201	5	T	A	1.00	\$ 45,000	1.00	\$ 40,567
15137/275	7/27/2010	C3075	Elementary Teacher	A0201	5	T	A	1.00	\$ 45,000	1.00	\$ 40,567
15137/275	7/27/2010	C3051	Elementary Teacher	T0305	5	T	A	1.00	\$ 45,000	1.00	\$ 46,609
15953/275	7/27/2010	C3080	Gen Ed Article VI Teach	T0205	5	T	A		\$ -	1.00	\$ 43,157
15137/275	7/27/2010	C3078	Elementary Teacher	T0407	5	T	A	1.00	\$ 50,000	1.00	\$ 51,426
15137/275	9/13/2010	C8016	Elementary Teacher	T0205	5	T	A	1.00	\$ 45,000	1.00	\$ 43,157
15953/275	7/27/2010	C3109	Gen Ed Article VI Teach	T0305	5	T	A		\$ -	1.00	\$ 46,609
15137/275	7/27/2010	C8013	Secondary Teacher	T0305	5	T	A	1.00	\$ 45,000	1.00	\$ 46,609
15137/275	7/27/2010	C3098	Elementary Teacher	T0205	5	T	A	1.00	\$ 45,000	1.00	\$ 43,157
17131/275	7/27/2010	C3089	Special Education Teach	T0205	5	T	A		\$ -	1.00	\$ 43,157
15137/275	7/27/2010	C3064	Elementary Teacher	T0205	5	T	A	1.00	\$ 45,000	1.00	\$ 43,157

Department of Education - CHarter Schools  
New Hires

Table 13

<u>Prog ID/Org</u>	<u>New Hire Effective Date</u>	<u>Position Number</u>	<u>Position Title</u>	<u>SR Level</u>	<u>BU Code</u>	<u>T/P</u>	<u>MOF</u>	<u>Budgeted FTE</u>	<u>Budgeted Salary</u>	<u>Actual FTE</u>	<u>Actual Salary</u>
15137/275	7/27/2010	C3074	Secondary Teacher	T0205	5	T	A	1.00	\$ 45,000	1.00	\$ 43,157
15953/275	7/27/2010	C3081	Elementary Teacher	T0205	5	T	A		\$ -	1.00	\$ 43,157
17131/275	7/27/2010	C3091	Special Education Teach	T0205	5	T	A		\$ -	1.00	\$ 43,157
15137/275	7/27/2010	C3083	Secondary Teacher	T0305	5	T	A	1.00	\$ 45,000	1.00	\$ 46,609
15137/275	11/10/2010	C8024	Elementary Teacher	T0305	5	T	A	1.00	\$ 45,000	1.00	\$ 46,609
15137/275	7/27/2010	C3069	Elementary Teacher	T0205	5	T	A	1.00	\$ 45,000	1.00	\$ 43,157
15137/275	1/4/2011	C8025	Elementary Teacher	T0207	5	T	A	1.00	\$ 45,000	1.00	\$ 45,785
15137/275	2/7/2011	C3053	Elementary Teacher	T0305	5	T	A	1.00	\$ 45,000	1.00	\$ 46,609
15137/275	2/22/2011	C8050	Counselor	T0305	5	T	A	1.00	\$ 45,000	1.00	\$ 46,609
15137/275	6/20/2011	17159	Vice Principal	E0418	6	T	A	1.00	\$ 100,000	1.00	\$ 100,732
15137/275	6/13/2011	17160	Principal	E0811	6	T	A	1.00	\$ 112,000	1.00	\$ 111,584
15137/275	7/26/2011	17163	Elementary Teacher	P0306	5	T	A	1.00	\$ 54,158	1.00	\$ 53,438
15137/275	7/26/2011	17164	Elementary Teacher	P0307	5	T	A	1.00	\$ 55,598	1.00	\$ 54,856
15137/275	7/26/2011	17165	Elementary Teacher	P0307	5	T	A	1.00	\$ 60,398	1.00	\$ 59,656
15137/275	7/26/2011	17166	Elementary Teacher	P0309	5	T	A	1.00	\$ 58,610	1.00	\$ 57,823
15137/275	7/26/2011	17167	Counselor	P0308	5	T	A	1.00	\$ 57,081	1.00	\$ 56,317
15137/275	7/26/2011	17168	Elementary Teacher	P0305	5	T	A	1.00	\$ 52,759	1.00	\$ 52,060
15137/275	7/26/2011	17169	Elementary Teacher	P0305	5	T	A	1.00	\$ 52,759	1.00	\$ 52,606
15137/275	7/26/2011	17170	Elementary Teacher	P0305	5	T	A	1.00	\$ 52,759	1.00	\$ 52,606
15137/275	7/26/2011	17171	Elementary Teacher	P0305	5	T	A	1.00	\$ 52,759	1.00	\$ 52,606
15137/275	7/26/2011	17172	Secondary Teacher	P0309	5	T	A	1.00	\$ 58,610	1.00	\$ 57,823
15137/275	8/24/2011	17213	Elementary Teacher	P0205	5	T	A	1.00	\$ 49,307	1.00	\$ 48,660
15137/275	7/26/2011	17173	Special Education Teach	P0305	5	T	A	1.00	\$ 52,759	1.00	\$ 52,606
15137/275	7/26/2011	17201	Elementary Teacher	P0206	5	T	A	1.00	\$ 50,602	1.00	\$ 49,935
15137/275	7/26/2011	17186	Elementary Teacher	P0206	5	T	A	1.00	\$ 50,602	1.00	\$ 49,935
15137/275	7/26/2011	17174	Elementary Teacher	P0205	5	T	A	1.00	\$ 49,307	1.00	\$ 48,660
15137/275	7/26/2011	17175	Elementary Teacher	P0208	5	T	A	1.00	\$ 58,109	1.00	\$ 57,402
15137/275	7/26/2011	17202	Elementary Teacher	P0306	5	T	A	1.00	\$ 54,158	1.00	\$ 53,438
15137/275	7/26/2011	17176	Elementary Teacher	P0205	5	T	A	1.00	\$ 49,307	1.00	\$ 48,660
15137/275	7/26/2011	17177	Elementary Teacher	P0305	5	T	A	1.00	\$ 52,759	1.00	\$ 52,606
15137/275	7/26/2011	17178	Secondary Teacher	P0205	5	T	A	1.00	\$ 49,307	1.00	\$ 48,660
15137/275	7/26/2011	17187	Special Education Teach	P0205	5	T	A	1.00	\$ 49,307	1.00	\$ 48,660

Department of Education - CHarter Schools  
New Hires

Table 13

<u>Prog ID/Org</u>	<u>New Hire Effective Date</u>	<u>Position Number</u>	<u>Position Title</u>	<u>SR Level</u>	<u>BU Code</u>	<u>T/P</u>	<u>MOF</u>	<u>Budgeted FTE</u>	<u>Budgeted Salary</u>	<u>Actual FTE</u>	<u>Actual Salary</u>
15137/275	7/26/2011	17179	Secondary Teacher	P0305	5	T	A	1.00	\$ 52,759	1.00	\$ 52,606
15137/275	7/26/2011	17180	Special Education Teach	P0305	5	T	A	1.00	\$ 52,759	1.00	\$ 52,606
15137/275	7/26/2011	17181	Special Education Teach	P0205	5	T	A	1.00	\$ 49,307	1.00	\$ 48,660
15137/275	7/26/2011	17182	Special Education Teach	P0307	5	T	A	1.00	\$ 55,598	1.00	\$ 54,856
15137/275	7/26/2011	17183	Elementary Teacher	P0305	5	T	A	1.00	\$ 52,759	1.00	\$ 52,606
15137/275	7/26/2011	17206	Secondary Teacher	P0306	5	T	A	1.00	\$ 54,158	1.00	\$ 53,438
15137/275	7/26/2011	17184	Elementary Teacher	P0206	5	T	A	1.00	\$ 50,602	1.00	\$ 49,935
15137/275	7/26/2011	17185	Counselor	P0305	5	T	A	1.00	\$ 52,759	1.00	\$ 52,606
15137/275	7/26/2011	17188	Elementary Teacher	TFA	5	T	A	1.00	\$ 46,717	1.00	\$ 46,717
15137/275	7/27/2011	17198	Teaching Assistant	SR14E	3	T	A	1.00	\$ 32,424	1.00	\$ 32,537
15137/275	8/1/2011	17199	Educational Assistant	SR10B	3	T	A	1.00	\$ 35,064	1.00	\$ 34,538
15137/275	7/27/2011	17017	Educational Assistant	SR12A	3	T	A	1.00	\$ 27,756	1.00	\$ 24,655
15137/275	7/27/2011	17200	Educational Assistant	SR12E	3	T	A	1.00	\$ 32,424	1.00	\$ 30,048
15137/275	7/27/2011	17066	Educational Assistant	SR12A	3	T	A	1.00	\$ 27,756	1.00	\$ 24,655
15137/275	7/27/2011	17086	Educational Assistant	SR12A	3	T	A	1.00	\$ 27,756	1.00	\$ 24,655
15137/275	7/27/2011	17030	Educational Assistant	SR12A	3	T	A	1.00	\$ 27,756	1.00	\$ 24,655
15137/275	7/27/2011	17144	Educational Assistant	SR12E	3	T	A	1.00	\$ 32,424	1.00	\$ 30,048
15137/275	7/27/2011	17203	Teaching Assistant	SR14E	3	T	A	1.00	\$ 32,424	1.00	\$ 32,537
15137/275	7/27/2011	17045	Educational Assistant	SR12A	3	T	A	1.00	\$ 32,424	1.00	\$ 30,048
15137/275	10/11/2011	17046	Educational Assistant	SR11A	3	T	A	1.00	\$ 23,756	1.00	\$ 23,756
15137/275	8/1/2011	17205	Educational Assistant	SR10C	3	T	A	1.00	\$ 30,063	1.00	\$ 29,585
15137/275	7/27/2011	17047	Educational Assistant	SR12A	3	T	A	1.00	\$ 27,756	1.00	\$ 24,655
15137/275	7/27/2011	17057	Educational Assistant	SR12A	3	T	A	1.00	\$ 27,756	1.00	\$ 24,655
15137/275	7/26/2011	17161	School Health Aide	SR09B	3	T	A	1.00	\$ 27,756	1.00	\$ 22,867
15137/275	7/26/2011	17162	School Health Aide	SR09F	3	T	A	1.00	\$ 32,424	1.00	\$ 26,711
15137/275	9/24/2011	17224	Secretary I	SR12A	3	T	A	1.00	\$ 30,036	1.00	\$ 29,585
15137/275	8/10/2011	17208	Account Clerk IV	SR13A	3	T	A	1.00	\$ 31,212	1.00	\$ 30,744
15137/275	7/1/2011	17090	Personnel Technician VI		0	T	A	1.00	\$ 33,756	1.00	\$ 33,756
15137/275	7/1/2011	17158	Office Assistant III	SR08C	3	T	A	1.00	\$ 27,756	1.00	\$ 27,340
15137/275	7/1/2011	17093	Receptionist	SR09A	3	T	A	1.00	\$ 26,700	1.00	\$ 26,230
15137/275	7/15/2011	17035	Office Assistant II	SR06L	3	T	A	1.00	\$ 23,688	1.00	\$ 23,333
15137/275	7/14/2011	17074	Clerk IV	SR10H	3	T	A	1.00	\$ 36,516	1.00	\$ 35,986

Department of Education - CHarter Schools  
New Hires

Table 13

<u>Prog ID/Org</u>	<u>New Hire Effective Date</u>	<u>Position Number</u>	<u>Position Title</u>	<u>SR Level</u>	<u>BU Code</u>	<u>T/P</u>	<u>MOF</u>	<u>Budgeted FTE</u>	<u>Budgeted Salary</u>	<u>Actual FTE</u>	<u>Actual Salary</u>
15137/275	8/16/2011	17031	School Custodian II	BC02A	1	T	A	1.00	\$ 33,228	1.00	\$ 33,228
15137/394	7/27/2010	WM5213	Sped ED Teacher	T0201	5	T	A	1.00	\$ 2,726.08	1.00	\$ 2,726.08
15137/394	12/11/2009	C5217	Elem. Teacher	T0306	5	T	A	0.50	\$ 2,000.34	0.50	\$ 2,000.34
15137/394	7/28/2010	C5217	Sped ED Teacher	T0305	5	T	A	1.00	\$ 3,884.08	1.00	\$ 3,884.08
15137/394	7/28/2010	C5220	Sped ED Teacher	T0201	5	T	A	1.00	\$ 2,726.08	1.00	\$ 2,476.08
15137/397	7/16/2011	N/A	Secondary Teacher	T0306	5	Perm	A	1.00	\$ 48,008.00	1.00	\$ 48,008.00
15137/399	11/23/2011	801043	PCS EDUC ASST III	C2T	3	T	A	1.00	\$ 19,114	1.00	\$ -
15137/411	08/04/2011	C411111	School Administrative A	13	4	T	A	1.00	\$ 47,327	1.00	\$ 47,327
15137/411	08/31/2011	C411110	Account Clerk	13	3	T	A	1.00	\$ 33,250	1.00	\$ 33,250
15137/411	09/01/2010	C411109	Vice Principal	T02-05	5	T	A	1.00	\$ 63,491	1.00	\$ 63,491
okako'o (KS)/4	07/27/2010	C411104	Teacher, Visual Arts	T03-06	5	T	DON	1.00	\$ 47,288	1.00	\$ 48,012
okako'o (KS)/4	07/27/2010	C411103	Teacher, Ike Hawaii	T03-05	5	T	DON	1.00	\$ 45,910	1.00	\$ 46,608
15137/411	07/27/2010	C411107	Teacher, Grade 1	T02-05	5	T	A	1.00	\$ 46,888	1.00	\$ 47,604
15137/411	07/27/2010	C411109	Teacher, Grade 1	T02-05	5	T	A	1.00	\$ 46,888	1.00	\$ 46,884
okako'o (KS)/4	08/01/2011	C411112	Teacher, Performing Art	T02-01	5	T	DON	1.00	\$ 32,222	1.00	\$ 31,896
15137/411	07/27/2010	C411102	Teacher, Performing Art	T05-06	5	T	A	1.00	\$ 53,000	1.00	\$ 51,925
18902/411	07/01/2011	C411108	Teacher, Curriculum Coo	T03-05	5	T	F	0.83	\$ 50,338	0.83	\$ 45,726
15137/411	07/01/2011	C411108	Teacher, Curriculum Coo	T03-05	5	T	A	0.17	\$ 5,593	0.17	\$ 9,366
15137/411	07/27/2010	C6022	Teacher, Physical Educa	T03-07	5	T	A	1.00	\$ 53,000	1.00	\$ 54,541
15137/466	8/25/2011	N/A	ELEMENTARY TEACHER	T02-05	5	P	A	1.00	\$ 43,157	1.00	In-progress
15137/541	8/3/2010		Teacher	T02/05	5	P	A	1.00	\$ 46,335	1.00	\$ 46,335
15137/541	11/15/2010	C8070	Teacher	T03/05	5	P	A	1.00	\$ 48,008	1.00	\$ 48,008
15137/541	8/1/2011	VOYA01	Teacher	T03/06	5	P	A	1.00	\$ 52,187	1.00	\$ 52,187
15137/541	8/1/2011	VOYA06	Teacher	T03/07	5	P	A	1.00	\$ 53,792	1.00	\$ 53,792
15137/541	8/1/2011	VOYA08	Teacher	T03/07	5	P	A	0.50	\$ 49,448	0.50	\$ 49,448
15137/541	8/1/2011	VOYA05	Teacher	T02/06	5	P	A	1.00	\$ 48,321	1.00	\$ 48,321
15137/541	8/1/2011	VOYA04	Teacher	T03/05	5	P	A	1.00	\$ 50,666	1.00	\$ 50,666
15137/541	8/1/2011	VOYA03	Teacher	T03/06	5	P	A	1.00	\$ 52,187	1.00	\$ 52,187
15137/541	8/1/2011	VOYA02	Teacher	T03/07	5	P	A	1.00	\$ 53,792	1.00	\$ 53,792
15137/541	8/22/2011	VOYA09	Teacher	T03/03	5	P	A	0.75	\$ 28,111	0.75	\$ 26,084
15137/541	11/1/2011	VOYA10	Teacher	T02/01	5	P	A	0.75	\$ 24,535	0.75	\$ 17,457
15137/541	8/1/2011	VOYA07	Teacher	T02/01	5	P	A	0.50	\$ 16,357	0.50	\$ 16,357

Department of Education - CHarter Schools  
New Hires

Table 13

<u>Prog ID/Org</u>	<u>New Hire Effective Date</u>	<u>Position Number</u>	<u>Position Title</u>	<u>SR Level</u>	<u>BU Code</u>	<u>T/P</u>	<u>MOF</u>	<u>Budgeted FTE</u>	<u>Budgeted Salary</u>	<u>Actual FTE</u>	<u>Actual Salary</u>
15137/541	10/11/2011	55029	EA I		3	P	A	1.00	\$ 21,214	1.00	\$ 21,214
15137/542	8/16/2011	n/a	IT coordinator/Teacher			P	A	0.50	\$ 20,000	0.50	\$ 20,000
15137/543	2/1/2011	00162	Business Manager	N/A	13	P	A	1.00	\$ 51,312	1.00	\$ 51,312
15137/543	5/16/2011	00166	IT Specialist II	N/A	13	P	A	1.00	\$ 42,132	1.00	\$ 42,132
15137/543	7/18/2011	00076	Vice Principal	N/A	06	P	A	1.00	\$ 62,500	1.00	\$ 62,500
15137/543	8/1/2011	00162	Secondary Teacher	N/A	05	P	A	1.00	\$ 32,713	1.00	\$ 32,713
15137/543	8/1/2011	00171	Secondary Teacher	N/A	05	P	A	1.00	\$ 48,008	1.00	\$ 48,008
15137/543	8/1/2011	00168	Secondary Teacher	N/A	05	P	A	1.00	\$ 35,329	1.00	\$ 35,329
15137/543	8/1/2011	00173	Secondary Teacher	N/A	05	P	A	1.00	\$ 46,609	1.00	\$ 46,609
15137/543	8/1/2011	00169	Secondary Teacher	N/A	05	P	A	1.00	\$ 46,609	1.00	\$ 46,609
15137/543	8/1/2011	00136	Secondary Teacher	N/A	05	P	A	0.60	\$ 19,628	1.00	\$ 19,628
15137/543	8/1/2011	00161	Secondary Teacher	N/A	05	P	A	0.60	\$ 19,628	1.00	\$ 19,628
15173-544	7/1/2010	30070	Secondary Teacher	T03-5	5	P	A	1.00	\$ 46,609	1.00	\$ 46,609
15173-544	7/27/2010	C1098	SPED/Sec. Teacher	T07-8	5	P	A	1.00	\$ 61,774	1.00	\$ 61,774
15173-544	7/28/2010	30072	Elementary Teacher	T03-5	5	P	A	1.00	\$ 46,609	1.00	\$ 46,609
15173-544	7/28/2010	30069	Spanish Teacher		5	T	A	0.50	\$ 30,000	0.50	\$ 30,000
15173-544	7/28/2010	3078	French Teacher		5	T	A	0.50	\$ 30,000	0.50	\$ 30,000
15173-544	9/1/2010	30075	Elementary Teacher	T02-5	5	P	A	1.00	\$ 43,158	1.00	\$ 43,158
15173-544	10/1/2010	30077	Elementary Teacher	T03-1	5	P	A	1.00	\$ 37,320	1.00	\$ 37,320
15173-544	7/25/2011	30079	Secondary Teacher	T03-5	5	P	A	1.00	\$ 46,609	1.00	\$ 46,609
15173-544	7/25/2011	30078	Secondary Teacher	T03-5	5	P	A	1.00	\$ 46,609	1.00	\$ 46,609
15137/546	9/1/2011	N/A	Community Resource Specialist - Family Support Specialist	SRNA	3	P		0.80	\$ 29,503	0.80	\$ 24,586
15137/546	7/28/2011	N/A	Math Advisor	T0205	5	P	A/don	1.00	\$ 42,510	1.00	\$ 42,510
15137-546	8/1/2011	N/A	Educational Assistant	SR08A	3	P	A	0.43	\$ 12,192	0.43	\$ 12,192
15137-546	8/1/2011	N/A	Educational Assistant	SR08A	3	P	A	0.43	\$ 12,192	0.43	\$ 12,192
15137/546	8/1/2011	N/A	Community Resource Specialist - Mauka Lab	SRNA	3	T	don	0.50	\$ 17,874	0.50	\$ 17,874
15137/547	9/6/2011	547301	Educational Assistant III	12	3	P	A	0.83	\$ 19,776	0.83	\$ 25,111

Department of Education - CHarter Schools  
New Hires

Table 13

<u>Prog ID/Org</u>	<u>New Hire Effective Date</u>	<u>Position Number</u>	<u>Position Title</u>	<u>SR Level</u>	<u>BU Code</u>	<u>T/P</u>	<u>MOF</u>	<u>Budgeted FTE</u>	<u>Budgeted Salary</u>	<u>Actual FTE</u>	<u>Actual Salary</u>
Federal Native	10/11/2011	547202	Educational Assistant II	10	3	P	N	0.83	\$ 13,520	0.83	\$ 9,855
15137/547	10/11/2011	547202	Educational Assistant II	10	3	P	A	0.50	\$ 13,520	0.50	\$ 6,160
KS Accreditati	7/1/2011	N/A	Elementary Teacher	T03-07	5	P	DON	0.50	\$ 23,491	0.50	\$ 23,491
Federal Native	7/1/2011	N/A	Elementary Teacher	T03-07	5	P	N	0.50	\$ 23,491	0.50	\$ 23,491
15137/547	7/1/2011	547401	Secondary Teacher	T02-01	5	P	A	0.50	\$ -	0.50	\$ 15,540
Federal Native	10/11/2011	547101	Elementary Teacher	T02-01	5	P	N	1.00	\$ 13,520	1.00	\$ 14,388
15137/548	7/26/2011	C5069	Elem. Teacher	T02-05	5	T	A	1.00	\$ 43,157	1.00	\$ 43,157
15137/548	7/26/2011	C5259	Counselor	T02-01	5	T	A	1.00	\$ 32,713	1.00	\$ 32,713
15137/548	8/9/2011	802300	PCS Office Svcs Coordinator		13	T	A	1.00	\$ 39,996	1.00	\$ 39,996
15137/548	8/9/2011	802301	PCS Ofc Coord/Bookkeeper		3	T	A	1.00	\$ 31,992	1.00	\$ 31,992
15137/548	8/18/2011	C5254	Elem-Sec. Teacher	T02-05	5	T	A	1.00	\$ 43,157	1.00	\$ 43,157
15137/548	11/16/2011	800415	PCS Custodian	BC01	1	T	A	0.50	\$ 32,772	0.50	\$ 16,386
15137/551	7/1/2010		Registrar	T04-03	5	P	A	1.00	\$ 38,981	1.00	\$ 38,981
15137/551	7/27/2010		Teacher	T02-07	5	P	A	1.00	\$ 43,157	1.00	\$ 43,157
15137/551	7/27/2010		Teacher	T02-05	5	P	A	1.00	\$ 43,157	1.00	\$ 43,157
15137/551	7/27/2010		Teacher	T02-08	5	P	A	1.00	\$ 47,159	1.00	\$ 47,159
15137/551	7/27/2010		Teacher	T04-07	5	P	A	1.00	\$ 51,426	1.00	\$ 51,426
15137/551	7/27/2010		Teacher	T02-07	5	P	A	1.00	\$ 45,785	1.00	\$ 45,785
15137/551	1/1/2011		Teacher	T02-05	5	P	A	0.50	\$ 21,579	0.50	\$ 21,579
15137/551	1/1/2011		Teacher	T03-07	5	P	A	1.00	\$ 49,448	1.00	\$ 49,448
15137/551	2/16/2011		Teacher	T02-05	5	P	A	0.50	\$ 21,579	0.50	\$ 21,579
15137/551	7/26/2011		Teacher	T02-05	5	P	A	1.00	\$ 43,157	1.00	\$ 43,157
15137/551	7/26/2011		Teacher	T03-06	5	P	A	1.00	\$ 48,008	1.00	\$ 48,008
15137/551	7/26/2011		Teacher	T02-05	5	P	A	1.00	\$ 45,785	1.00	\$ 45,785
15137/551	7/26/2011		Teacher	T02-11	5	P	A	1.00	\$ 51,532	1.00	\$ 51,532
15137/551	7/26/2011		Teacher	T04-07	5	P	A	1.00	\$ 51,426	1.00	\$ 51,426
15137/551	7/26/2011		Teacher	T03-05	5	P	A	1.00	\$ 46,609	1.00	\$ 46,609
15137/551	7/26/2011		Teacher	T02-08	5	P	A	1.00	\$ 47,159	1.00	\$ 47,159
15137/551	7/26/2011		Counselor	T03-05	5	P	A	1.00	\$ 46,609	1.00	\$ 46,609
15137/551	7/26/2011		Teacher	T03-06	5	P	A	1.00	\$ 48,008	1.00	\$ 48,008
15137/551	7/26/2011		Teacher	T03-06	5	P	A	1.00	\$ 48,008	1.00	\$ 48,008
15137/551	7/26/2011		Teacher	T03-05	5	P	A	1.00	\$ 46,609	1.00	\$ 46,609



Department of Education - CHarter Schools  
New Hires

Table 13

<u>Prog ID/Org</u>	<u>New Hire Effective Date</u>	<u>Position Number</u>	<u>Position Title</u>	<u>SR Level</u>	<u>BU Code</u>	<u>T/P</u>	<u>MOF</u>	<u>Budgeted FTE</u>	<u>Budgeted Salary</u>	<u>Actual FTE</u>	<u>Actual Salary</u>
15137/551	7/26/2011		Teacher	T03-05	5	P	A	1.00	\$ 46,609	1.00	\$ 46,609
15137/551	7/26/2011		Teacher	T07-09	5	P	A	1.00	\$ 62,550	1.00	\$ 62,550
15137/551	8/1/2011		Counselor	T03-05	5	P	A	1.00	\$ 46,609	1.00	\$ 46,609
15137/557	7/26/2011	C5234	Elem-Sec Teacher	P07 07	5	P	A	1.00		1.00	\$ 4,913
15137/557	7/1/2011	C8091	12 Month Teacher	P06 07	5	P	A	1.00		1.00	\$ 5,933
15137/557	8/23/2010	C5246	Gen Educ/Article VI Tch	T03 05	5	P	A	1.00		1.00	\$ 3,826
15137/557	7/26/2011	C8010	Elem Teacher	P06 06	5	P	A	1.00		1.00	\$ 4,500
17131/557	10/1/2011	801224	SPED EA	E4J		T	Y	1.00	11.72 hrly	Y	11.72 hrly
560	7/1/2010	50300	Elementary Teacher	C5 S6	05	P	A	1.00	\$ 49,329	1.00	\$ 49,329
560	7/1/2010	50300	Elementary Teacher	C3 S6	05	p	A	1.00	\$ 45,608	1.00	\$ 45,608
560	8/23/2010		Recess Monitor	N/A	N/A	P	A	0.38	\$ 9,856	0.38	\$ 9,856
560	10/1/2010	22002	Business Manager	N/A	N/A	P	A	0.75	\$ 32,368	0.75	\$ 32,368
560	10/13/2010	47472	Classroom Aide	N/A	N/A	P	A	0.78	\$ 9,856	0.78	\$ 20,231
17929/560	12/1/2010	801384	Educ ASST II	SR 10	03	T	N	0.75	\$ 17,203	0.75	\$ 17,203
560	3/7/2011	9341	Custodian	N/A	N/A	P	A	0.45	\$ 14,208	0.45	\$ 14,208
560	8/12/2011	9341	Custodian	N/A	N/A	P	A	0.28	\$ 8,841	0.28	\$ 8,841
560	8/18/2011		PPT		03	P	A	0.48	\$ 13,319	0.48	\$ 13,319
560	8/29/2011	47482	Reading Tutor	N/A	N/A	P	A	0.75	\$ 20,810	0.75	\$ 20,810
560	10/3/2011	51033	Education Director	N/A	N/A	P	A	1.00	\$ 63,500	1.00	\$ 63,500
560	10/17/2011	22002	Business Manager	N/A	N/A	P	A	0.75	\$ 38,000	0.75	\$ 38,000
560	10/27/2011	9341	Custodian	N/A	N/A	P	A	0.35	\$ 11,051	0.35	\$ 11,051
562	11/9/2011		Tutor - 7-12		3	T	DON	1.00	\$ 27,840	1.00	\$ 27,840
562	11/7/2011		NWEA Proctor		3	T	DON	1.00	\$ 28,000	1.00	\$ 27,500
562	11/23/2011	C8006	Sped Teacher K-6	T 02 01	5	T	A	1.00	45,00.00	1.00	\$ 32,222
15137/554	7/18/2011	N/A	HS Science Teacher	T03-05	5	P	A	1.00	\$ 49,448	1.00	\$ 46,609
15137/554	7/18/2011	N/A	HS Language Arts Teach	T03-05	5	P	A	1.00	\$ 49,448	1.00	\$ 46,609
15137/554	7/19/2010	N/A	HS Social Studies Teach	T03-06	5	P	A	1.00	\$ 48,008	1.00	\$ 48,008
15137/554	7/19/2010	N/A	HS Language Arts Teach	T03-06	5	P	A	1.00	\$ 48,008	1.00	\$ 48,008
15137/554	7/18/2011	N/A	HS Humanities Teacher	T07-06	5	P	A	1.00	\$ 57,243	1.00	\$ 57,243
15137/554	7/29/2011	N/A	Elementary Teacher	T03-05	5	P	A	1.00	\$ 49,448	1.00	\$ 46,492
15137/554	7/18/2011	N/A	Special Education Teach	T03-06	5	P	A	1.00	\$ 49,448	1.00	\$ 48,513
15137/554	4/5/2011	N/A	HS Lead/Tech Teacher		5	P	A	1.00	\$ 63,000	1.00	\$ 61,127

Department of Education - CHarter Schools  
New Hires

Table 13

<u>Prog ID/Org</u>	<u>New Hire Effective Date</u>	<u>Position Number</u>	<u>Position Title</u>	<u>SR Level</u>	<u>BU Code</u>	<u>T/P</u>	<u>MOF</u>	<u>Budgeted FTE</u>	<u>Budgeted Salary</u>	<u>Actual FTE</u>	<u>Actual Salary</u>
15137/554	7/19/2010	N/A	HS Science Teacher	T03-05	5	P	A	1.00	\$ 49,172	1.00	\$ 46,609
15137/554	7/19/2010	N/A	HS Science Teacher	T03-01	5	P	A	1.00	\$ 50,000	1.00	\$ 17,665
15137/554	1/3/2011	N/A	HS Science Teacher	T03-06	5	P	A	1.00	\$ -	1.00	\$ 26,692
15137/554	7/18/2011	N/A	MS Science Teacher	T03-05	5	P	A	1.00	\$ 48,008	1.00	\$ 46,609
15137/554	7/18/2011	N/A	MS Math Teacher	T03-06	5	P	A	1.00	\$ 50,932	1.00	\$ 20,720
15137/554	7/19/2010	N/A	Educational Assistant	SR17B	3	P	A	1.00	\$ 35,705	1.00	\$ 35,705
15137/554	7/19/2010	N/A	Educational Assistant	SR17A	3	P	A	1.00	\$ 34,705	1.00	\$ 34,705
15137/554	7/19/2010	N/A	Educational Assistant	SR19A	3	P	A	1.00	\$ 37,485	1.00	\$ 37,485
15137/554	7/19/2010	N/A	Educational Assistant	SR15A	3	P	A	1.00	\$ 32,279	1.00	\$ 32,279
15137/554	7/19/2010	N/A	Educational Assistant	SR17A	3	P	A	1.00	\$ 35,705	1.00	\$ 35,000
15137/554	7/19/2010	N/A	Educational Assistant	SR17B	3	P	A	1.00	\$ 34,705	1.00	\$ 35,705
15137/554	7/20/2011	N/A	Educational Assistant	SR17A	3	P	A	1.00	\$ 34,705	1.00	\$ 34,705
15137/554	8/11/2011	N/A	Educational Assistant	SR14B	3	P	A	1.00	\$ 35,705	1.00	\$ 31,492
15137/554	6/6/2011	N/A	Student Support Services		5	P	A	1.00	\$ 65,000	1.00	\$ 65,000
15137/554	1/3/2011	N/A	Clerk	SR05H	3	P	A	1.00	\$ 33,000	1.00	\$ 14,228
15137/554	8/13/2010	N/A	Clerk	SR16A	3	P	A	1.00	\$ 33,000	0.75	\$ 33,000
15137/554	7/19/2010	N/A	Elementary Teacher	T03-06					\$ 50,000		\$ 48,008
15137/398	7/25/2011	n/a	Title I Reading Specialist	6	3	P	N	1.00	\$ 23,143	1.00	\$ 10,982
15137/398	8/15/2011	n/a	Tutor	4	3	T	A	0.50	\$ 6,223	0.50	\$ 5,336
15137/398	8/16/2011	n/a	Bus Monitor	4	3	P	A	0.50	\$ 10,075	0.50	\$ 1,722
15137/398	7/25/2011	n/a	Teacher	T03-05	5	P	A	1.00	\$ 46,609	1.00	\$ 17,312
15137/566	7/1/2011	N/a	Elementary Teacher	T02-3	5	P	A	1.00	\$ 52,415	1.00	\$ 52,415
15137/566	7/1/2011	N/a	Elementary Teacher	T02-3	5	P	A	0.75	\$ 30,000	0.75	\$ 30,000
15137/566	11/25/2011	N/a	Elementary Teacher	T02-3	5	P	A	0.40	\$ 16,474	0.40	\$ 16,474
15137/566	7/1/2011	N/a	Educational Assistant	N/a	5	P	A	0.75	\$ 18,000	0.75	\$ 18,000
15137/566	7/1/2011	N/a	Administrative Assistant	N/a	4	P	A	1.00	\$ 25,000	1.00	\$ 25,000
15137/566	7/1/2011	N/a	Receptionist	N/a	3	P	A	0.50	\$ 10,000	0.50	\$ 10,000
15137/561	7/27/2010	C5115	Teacher	P0707	5	P	A	1.00	\$ 58,959	1.00	\$ 58,959
15137/561	7/28/2010	C5153	Teacher	P0305	5	P	A	1.00	\$ 32,713	1.00	\$ 46,609
15137/561	7/28/2010	C5285	Teacher	P0305	5	P	A	1.00	\$ 46,609	1.00	\$ 46,609
15137/561	7/26/2010	C5316	Teacher	P0307	5	P	A	1.00	\$ 49,448	1.00	\$ 49,448
15137/561	7/26/2010	C5151	Teacher	T0307	5	P	A	1.00	\$ 49,448	1.00	\$ 49,448

Department of Education - CHarter Schools  
New Hires

Table 13

<u>Prog ID/Org</u>	<u>New Hire Effective Date</u>	<u>Position Number</u>	<u>Position Title</u>	<u>SR Level</u>	<u>BU Code</u>	<u>T/P</u>	<u>MOF</u>	<u>Budgeted FTE</u>	<u>Budgeted Salary</u>	<u>Actual FTE</u>	<u>Actual Salary</u>
15137/561	7/26/2010	C5116	Teacher	P0305	5	P	A	0.50	\$ 23,304	0.60	\$ 27,965
15137/561	7/26/2010	C5314	Teacher	P0305	5	P	A	0.50	\$ 24,004	1.00	\$ 48,008
15137/396	7/26/2011	Ceridian 20	Teacher	T0305	5	T	A	1.00	\$ 46,609	1.00	\$ 46,609
15137/396	7/26/2011	Ceridian 20	Teacher	T0406	5	T	A	1.00	\$ 49,928	1.00	\$ 49,928
15137/396	7/26/2011	Ceridian 20	Teacher	T0305	5	T	A	1.00	\$ 46,609	1.00	\$ 46,609
15137/396	8/22/2011	Ceridian 20	Teacher	T0305	5	T	A	1.00	\$ 46,609	1.00	\$ 46,609
15137/396	11/1/2010	Ceridian 20	Teacher	T0308	5	T	A	1.00	\$ 50,931	1.00	\$ 50,931
15137/396	7/26/2011	Ceridian 20	Teacher	T0306	5	T	A	1.00	\$ 48,008	1.00	\$ 48,008
15137/396	8/1/2011	Ceridian 20	Bus Driver/Supervisor		1	T	A	1.00	\$ 27,459	1.00	\$ 27,459
15137/564	8/1/2011		Elementary Teacer		5			1.00	\$ 43,157	1.00	\$ 43,157
15137/564	8/1/2011		Elementary Teacher		5			1.00	\$ 43,157	1.00	\$ 43,157
15137/564	8/1/2011		Elementary Teacer		5			1.00	\$ 43,157	1.00	\$ 43,157
15137/564	8/1/2011		Elementary Teacher		5			1.00	\$ 46,609	1.00	\$ 46,609
15137/564	8/1/2011		Middle and HS Teacher		5			0.50	\$ 21,479	0.50	\$ 21,479
15137/549	9.1.2011	C5173	12 mo. PCS Director		6	P	A	1.00	\$ 92,247	1.00	\$ 92,247
15137/549	8.1.2011		Part time teacher			T	Don		\$ 15,640		
15137/549	8.1.2011		Part time teacher			T	Don		\$ 15,640		

Department of Education - Charter Schools  
RIF Related Grievances

Table 14

<u>Prog ID/Org</u>	<u>Position Number</u>	<u>Position Title</u>	<u>SR Level</u>	<u>BU</u>	<u>T/P</u>	<u>MOF</u>	<u>FTE</u>	<u>RIF Date</u>	<u>Grievance Date</u>	<u>Current Status</u>
15137/560		School Bus Driver	BC07	01	P	VSAS	0.75	8/24/2009	9/8/2009	Not employed by VSAS
15137/560		School Custodian	BC02	01	P	VSAS	0.5	10/5/2009	10/22/2009	Still employed by VSAS
15137/398	n/a	Teacher	T02-05	5.00	P	A	1	4/16/2010	5/7/2010	settled
15137/398	n/a	Teacher	T02-05	5.00	P	A	1	4/16/2010	5/7/2010	settled
15137/398	n/a	Teacher	T02-07	5.00	P	A	1	4/9/2010	5/7/2010	settled
15137/398	n/a	Teacher	T02-06	5.00	P	A	1	4/16/2010	5/7/2010	pending arbitration
15137/398	n/a	Teacher	T02-05	5.00	P	A	1	4/16/2010	5/7/2010	pending arbitration
15137/398	n/a	Teacher	T02-01	5.00	P	A	1	4/16/2010	5/7/2010	settled
15137/398	n/a	Teacher	T02-01	5.00	P	A	1	4/16/2010	5/7/2010	pending arbitration
15137/398	n/a	Student Services Coordinator	T04-07	5.00	P	A	1	4/19/2010	5/7/2010	settled

Department of Education - Charter Schools  
Expenditures Exceeding Appropriation Ceilings

Table 15

<u>Prog ID</u>	<u>MOF</u>	<u>Date of Increase</u>	<u>Appropriation Ceiling</u>	<u>Amount Exceeding Appropriation</u>	<u>Increase Percent</u>	<u>Reason for Exceeding Ceiling</u>	<u>Recurring (Y/N)</u>	<u>GF Impact (Y/N)</u>
NONE								

Department of Education - Charter Schools  
Federal Grants

Table 16

<u>Prog ID</u>	<u>CFDA No.</u>	<u>Award Description</u>	<u>Awarding Federal Agency</u>	<u>Anticipated or Actual Date of Award</u>	<u>Anticipated or Actual Award Amount</u>	<u>State Fiscal Year</u>	<u>State Matching Requirement or Other Commitment (Describe)</u>	<u>Anticipated Reduction or Discontinuance (Y/N)</u>	<u>Comments</u>
17790	84.011	Migrant Education	ED	9/14/11 & 12/05/11	\$ 33,221	FY2012	N	N	Provided through allocations of total state award to DOE as SEA
18055, 18062, 18902, 18927, 18935, 52003	84.010	TITLE I - Grants to LEAs	ED	VARIOUS	\$ 1,518,116	FY2012	N	N	Provided through allocations of total state award to DOE as SEA
18062	84.377	SIG	ED	7/15/2011	\$ 700,000	FY2012	N	N	Provided through allocations of total state award to DOE as SEA
20672, 20673, 20674, 20677, 20696, 20697	84.367	TITLE II PART A	ED	VARIOUS	\$ 794,216	FY2012	N	N	Provided through allocations of total state award to DOE as SEA
19026 & 19998	84.041	Impact Aid	ED	Various	\$ 2,258,491	fFY2012	N	N	Provided through allocations of total state award to DOE as SEA

Department of Education - Charter Schools  
 Intradepartmental Transfer of Funds

Table 17

<u>Anticipated or Actual Date of Transfer</u>	<u>MOF</u>	<u>Amount of Transfer</u>	<u>From Prog ID</u>	<u>Percent of Imparting Program ID Appropriation</u>	<u>To Prog ID</u>	<u>Percent of Receiving Program ID Appropriation</u>	<u>Reason for Transfer</u>	<u>Recurring (Y/N)</u>
None								

Department of Education - Charter Schools  
 Interdepartmental Transfer of Funds

Table 18

<u>Anticipated or Actual Date of Transfer</u>	<u>MOF</u>	<u>Amount of Transfer</u>	<u>From Prog ID</u>	<u>Percent of Imparting Program ID Appropriation</u>	<u>To Prog ID</u>	<u>Percent of Receiving Program ID Appropriation</u>	<u>Transfer Category LS/PR/O</u>	<u>Reason for Transfer (O - Other)</u>	<u>Recurring (Y/N)</u>
None									



Department of Education - Charter Schools  
Active Contracts

Table 19

Prog ID	MOF	Amount	Frequency (M/A/O)	Max Value	Outstanding Balance	Date Executed	Term of Contract		Organization	Category G/S/E/L	Description	Explanation of How Contract is Monitored	POS Y/N
							From	To					
5137/14	A	\$ 1,616	M	\$ 96,944	\$ 50,019.42	10/1/2009	10/1/09	9/30/14	Ricoh Americas Corp	E	5 year lease on 3 Copiers and 1 Fax machine	Copy counts are monitored	N
5137/27	A	\$ 23,500	A	\$ 23,500	\$ 23,500.00	8/5/2011	7/1/11	6/30/12	N&K CPA	S	Auditing Services for SY10-11 including single audit	Kamaile has established internal controls to monitor contracts	Y
5137/27	A	\$ 24,000	A	\$ 24,000	\$ 24,000.00	8/5/2011	7/1/12	6/30/13	N&K CPA	S	Auditing Services for SY11-12 including single audit	Kamaile has established internal controls to monitor contracts	Y
5137/27	A	\$ 24,500	A	\$ 24,500	\$ 24,500.00	8/5/2011	7/1/13	6/30/14	N&K CPA	S	Auditing Services for SY12-13 including single audit	Kamaile has established internal controls to monitor contracts	Y
5137/27	A	\$ 33,656	O - 90% upo	\$ 33,656	\$ 3,365.60	7/1/2011	7/1/11	6/30/12	DOE	S	eSIS, Lotus Notes, Courier, Budget, Support Services	Kamaile has established internal controls to monitor contracts	Y
8062/27	N	\$ 110,650	O - As servic	\$ 110,650	\$ 55,312.50	7/1/2011	7/1/11	6/30/12	UH CREDE	S	Professional Development Training and Support	Kamaile has established internal controls to monitor contracts	Y
8062/27	N	\$ 100,000	O - As servic	\$ 100,000	\$ 43,468.00	7/1/2011	7/1/11	6/30/12	Envision	S	Professional Development Training and Support	Kamaile has established internal controls to monitor contracts	Y
8062/27	N	\$ 30,000	O - As servic	\$ 30,000	\$ 24,672.00	10/1/2011	10/1/11	6/30/12	Dynamic Intervention	S	Professional Development Training and Support for Special Education and RTI	Kamaile has established internal controls to monitor contracts	Y

Department of Education - Charter Schools  
Active Contracts

Table 19

Prog ID	MOF	Amount	Frequency (M/A/O)	Max Value	Outstanding Balance	Date Executed	From	To	Organization	Category G/S/E/L	Description	How Contract is Monitored	POS Y/N
5137/275	DON	\$ 42,000	O - Semi-Mo	\$ 42,000	\$ 21,578.00	8/1/2011	8/1/11	5/30/11	Calveena Gomes	S	Ike Hawaii Instruction	Kamaile has established internal controls to monitor contracts	Y
5137/275	A	\$ 82,000	M	\$ 82,000	\$ 47,833.00	7/15/2011	7/15/11	6/30/11	Cyberwest Computer	S	IT Support	Kamaile has established internal controls to monitor contracts	Y
5137/275	A	Amount: \$1,000,000	O - Per Plate Charge			1/25/2011	1/25/11	6/30/12	Sodexo	S	Food Service for breakfast, lunch and snacks	Kamaile has established internal controls to monitor contracts	Y
5137/275	A	\$ 6,000	A	\$ 6,000	\$ -	7/1/2011	7/1/11	6/30/12	Teach For America	S	Educational Professional Services	Kamaile has established internal controls to monitor contracts	Y
5137/275	A	\$ 6,000	A / M	\$ 6,000	\$ 1,287.00	7/1/2011	7/1/11	6/30/12	Sonitrol of Hawaii	S	Alarm System	Kamaile has established internal controls to monitor contracts	Y
5137/275	A	\$ 2,750	M	\$ 2,750	\$ 1,611.00	7/1/2011	7/1/11	6/30/12	Copesan	S	Pest Control Services	Kamaile has established internal controls to monitor contracts	Y
5137/275	A	\$ 30,000	M	\$ 30,000	\$ 15,593.00	7/1/2011	7/1/11	6/30/11	Xerox	E	Lease of copy machines	Kamaile has established internal controls to monitor contracts	Y

Department of Education - Charter Schools  
Active Contracts

Table 19

Prog ID	MOF	Amount	Frequency (M/A/O)	Max Value	Outstanding Balance	Date Executed	From	To	Organization	Category G/S/E/L	Description	How Contract is Monitored	POS Y/N
15137/394	N	\$ 50,587	A	\$ 50,586.70	\$ 12,646.67	6/1/2010	6/6/10	7/14/13	Achieve 3000	G	Literacy Program	WMS has established internal controls to monitor contracts	N
15137/394	N	\$ 1,500	M	\$ 1,500.00	\$ 750.00	6/27/2010	7/1/11	6/30/12	Orkin Pest Control	S	Termite/Bug Specialist	WMS has established internal controls to monitor contracts	Y
15137/394	DON	\$ 15,000	A	\$ 15,000.00	\$ 15,000.00	11/20/2011	7/1/11	6/30/12	Datawise Group	S	Data Collection and Analysis	WMS has established internal controls to monitor contracts	Y
15137/394	A	\$ 9,713	A	\$ 9,713.14	\$ 971.31	7/1/2011	7/1/11	6/30/12	DOE	S	Lotus Notes, Courier Service; Other required services	WMS has established internal controls to monitor contracts	Y
15137/394	N	\$ 814	A	\$ 814.32	\$ -	7/1/2011	7/1/11	6/30/12	Alert Alarm Hawaii	S	Security Alarm	WMS has established internal controls to monitor contracts	Y
15137/394	N	\$ 17,000	M	\$ 17,000.00	\$ 12,750.00	10/1/2011	10/1/11	10/1/16	Xerox Corporation	E	Xerox Machines and Services	WMS has established internal controls to monitor contracts	N
15137/394	A	\$ 19,500	A	\$ 19,500.00	\$ 21,000.00	08/05/2011	07/01/11	06/30/12	N & K CPAs, Inc.	S	Auditing Services for SY 10-11; including Single Audit	WMS has established internal controls to monitor contracts	Y
15137/394	A	\$ 20,000	A	\$ 20,000.00	\$ 21,500.00	08/05/2011	07/01/12	06/30/13	N & K CPAs, Inc.	S	Auditing Services for SY 11-12; including Single Audit	WMS has established internal controls to monitor contracts	Y
15137/394	A	\$ 20,500	A	\$ 20,500.00	\$ 22,000.00	08/05/2011	07/01/13	07/31/14	N & K CPAs, Inc.	S	Auditing Services for SY 12-13; including Singel Audit	WMS has established internal controls to monitor contracts	Y
5137/394	A	\$ 316.47	M	\$ 11,393	\$ 6,645.87	09/10/10	9/10/10	9/10/13	Ricoh	E	Copier	Yearly review	N
5137/394	A	\$ 306.08	M	\$ 11,019	\$ 6,427.68	09/10/10	9/10/10	9/10/13	Ricoh	E	Copier	Yearly review	N
5137/394	A	\$ 466.00	M				Month to Month		State of HI/NELHA	L	Lease Rent	Yearly review	N

Department of Education - Charter Schools  
Active Contracts

Table 19

Prog ID	MOF	Amount	Frequency (M/A/O)	Max Value	Outstanding Balance	Date Executed	From	To	Organization	Category G/S/E/L	Description	How Contract is Monitored	POS Y/N
5137/41	A	\$ 21,000.00	A	\$ 21,000	\$ 21,000.00	08/05/2011	07/01/2011	06/30/2012	N & K CPAs, Inc.	S	Auditing Services for SY 10-11; including Single Audit	KUU has established internal controls to monitor contracts	Y
5137/41	A	\$ 21,500.00	A	\$ 21,500	\$ 21,500.00	08/05/2011	07/01/2012	06/30/2013	N & K CPAs, Inc.		Auditing Services for SY 11-12; including Single Audit	KUU has established internal controls to monitor contracts	Y
15137	A	\$ 22,000.00	A	\$ 22,000	\$ 22,000.00	08/05/2011	07/01/2013	07/31/2014	N & K CPAs, Inc.		Auditing Services for SY 12-13; including Singel Audit	KUU has established internal controls to monitor contracts	Y
ako'o (KS	DON	aries Monthly	M	\$ 53,100	\$ 30,975.00	07/01/2011	07/26/2011	06/30/2012	Dudoit's Bus Service, I	S	Student transportation to/from school	KUU has established internal controls to monitor contracts	Y
5137/41	A	\$ 31,282.50	A	\$ 31,283	\$ -	05/18/2011	07/01/2011	06/30/2012	Success For All	S	15, On-site Professional Development Days	KUU has established internal controls to monitor contracts	Y
5137/41	A	\$ 36,498.00	A	\$ 36,498	\$ -	05/18/2011	07/01/2011	06/30/2012	Success For All	G	Curriculum Materials to support reading program	KUU has established internal controls to monitor contracts	N
5137/41	A	\$ 150.06	A	\$ 150	\$ 150.06	06/28/2010	06/28/2010	Current	Ceridian Corporation	S	Payroll Services and filings	KUU has established internal controls to monitor contracts	Y

Department of Education - Charter Schools  
Active Contracts

Table 19

Prog ID	MOF	Amount	Frequency (M/A/O)	Max Value	Outstanding Balance	Date Executed	From	To	Organization	Category G/S/E/L	Description	How Contract is Monitored	POS Y/N
5137/41	A	\$ 20.00	M	\$ 240	\$ 120.00	06/28/2010	06/28/2010	Current	Ceridian Corporation	S	Payroll Services monthly maintenance fee	KUU has established internal controls to monitor contracts	Y
5137/41	A	\$ 192.50	Per Payperiod	\$ 4,620	\$ 2,310.00	06/28/2010	06/28/2010	Current	Ceridian Corporation	S	Payroll Services, HR/PR Web per check fee	KUU has established internal controls to monitor contracts	Y
5137/41	A	\$ 11,222.00	O - 90% upon invoice #1; 10% upon invoice #2	\$ 11,222	\$ 1,122.20	7/1/2010	7/1/10	6/30/11	Department of Education	S	Lotus Notes; HSA Testing; ESIS (student database); Other Required Services	KUU has established internal controls to monitor contracts	Y
5137/46	A	~3600.00	M		\$ -	2/1/2004	2/1/04	Present	Wray Enterprises LLC	L	School facilities incl elec & opala	Monthly	
5137/46	A	~\$200.00	Q		\$ -	7/1/2011	7/1/11	6/30/12	S&S Bus. Mach.	S	Maintenance & supplies agreement	Receipt of Invoice	
5137/46	A	~\$250,00	Tri-annual		\$ -	7/1/2011	7/1/11	6/30/12	Xerox	S	Maintenance & supplies agreement	Receipt of Invoice	
DON/466	DON	\$ 19,200.00	As rendered	\$ 19,200	\$ 13,380.00	7/27/2011	8/1/11	4/1/12	Contractor	S	Accrediation Support	Receipt of Invoice	
5137/54	A		Monthly		\$ -	none			Fisher	G	Office Supplies	Internal controls created from monitoring contract	N
5137/54	A		Monthly		\$ -	none			Office Max	G	Office Supplies	Internal controls created from monitoring contract	N
5137/54	A		Monthly		\$ -	9/28/2010	11/8/10	11/7/15	IKON	E	Equipment rental and service	Internal controls created from monitoring contract	Y
5137/54	A		Monthly		\$ -	7/15/2011	7/31/11	7/30/12	Anago	S	Cleaning	Internal controls created from monitoring contract	Y

Department of Education - Charter Schools  
Active Contracts

Table 19

Prog ID	MOF	Amount	Frequency (M/A/O)	Max Value	Outstanding Balance	Date Executed	From	To	Organization	Category G/S/E/L	Description	How Contract is Monitored	POS Y/N
5137/54	A		Annual		\$ -	8/25/2010	7/1/10	6/30/11	MOU with DOE	S	Courier Service with DOE	Internal controls created from monitoring contract	Y
5137/54	A		Monthly		\$ -	6/2/2011	6/2/11	7/31/12	Food Service	S	DOE/Aliioli School Break/Lunch	Internal controls created from monitoring contract	Y
5137/54	A		Monthly		\$ -	9/3/2010	6/1/10	7/31/13	Voyager School Fnd	L	Rent/Lease	Internal controls created from monitoring contract	N
5137/54	A		Monthly		\$ -	none			Howe Stidger	S	Counseling	Internal controls created from monitoring contract	Y
5137/54	A		Monthly		\$ -	7/27/2011	8/1/11	7/31/12	Oahu Computer	S	Networking	Internal controls created from monitoring contract	Y
5137/54	A		Monthly		\$ -	none			Hawaiian Telcom	S	Phones	Internal controls created from monitoring contract	Y
5137/54	A		Monthly		\$ -	6/27/2011	7/1/11	6/30/13	Oceanic Cable	S	Internet	Internal controls created from monitoring contract	Y
15137/542	A	\$ 46,129	M	\$ 553,550	\$ -	7/1/2011	7/1/11	6/30/11	Educational Innovativ	S	Virtual program curriculum	Invoices and services performed are verified with deliverables stated on contract	Y

Department of Education - Charter Schools  
Active Contracts

Table 19

Prog ID	MOF	Amount	Frequency (M/A/O)	Max Value	Outstanding Balance	Date Executed	From	To	Organization	Category G/S/E/L	Description	How Contract is Monitored	POS Y/N
15137/542	A	\$ 2,090	M	\$ 23,955	\$ -	7/1/2011	7/1/11	6/30/11	Educational Innovativ	L	Lease of real property/office space	Invoices are verified with deliverables stated on contract	N
15137/542	A	\$ 12,590	M	\$ 151,083	\$ -	9/1/2011	9/1/2011	8/31/13	Waiakamilo Propertie	L	Lease of real property/office space	Invoices are verified with deliverables stated on contract	N
5137/544	A	\$20,249.00	M	\$ 188,352	\$ 141,743	9/16/2011	10/20/11	7/31/12	Ho ilina	L	Facility Lease - Honolulu	MBTA has established internal controls to monitor contract.	N
5137/544	A	\$1,014.00	M	\$ 24,343	\$ 6,084	6/10/2008	6/16/08	6/15/12	Day-Lum Rentals	L	Facility Lease - Hilo	MBTA has established internal controls to monitor contract.	N
5137/544	A	\$ 1,219.00	M	\$ 73,136	\$ 15,846	12/21/2007	1/30/08	1/30/13	Xerox	E	Copier/Printer Equipment	MBTA has established internal controls to monitor contract.	N
5137/544	A	\$ 4,640.00	0 90% first invoice, 10% 2nd invoice	\$ 4,640	\$ 464	11/3/2011	7/1/11	6/30/12	DOE	S	Budget Branch, Courier Service, Lotus Notes, Payroll	MBTA has established internal controls to monitor contract.	Y
5137/544	A	\$16,500	A	\$ 16,500	\$ 16,500	12/1/2011	10/1/11	6/30/12	BlackBoard/Wimba	S	Web conferencing services for faculty and students	MBTA has established internal controls to monitor contract.	Y
5137/544	AWN	Per lunch \$3.75-4.55 Per Breakfast 2.25	M - for meals ordered		\$ -	8/10/2011	8/2/11	5/25/12	Lanakila Kitchen	S	Breakfast & Lunch Meals	Meal charges are crossed check with meals record of meals ordered/received	Y

Department of Education - Charter Schools  
Active Contracts

Table 19

Prog ID	MOF	Amount	Frequency (M/A/O)	Max Value	Outstanding Balance	Date Executed	From	To	Organization	Category G/S/E/L	Description	How Contract is Monitored	POS Y/N
5137/54	A	\$ 510	M	\$ 30,590	\$ 22,448.96	7/20/2011	8/1/11	7/31/16	Xerox	E	Lease Xerox Copier sCQ9301	Billed monthly - check against meter reading	N
5137/54	A	\$ 153	M	\$ 152.57	\$ -	12/15/2008	month	month	Central Self Storage	L	Storage Space for archived documents	Billed and paid monthly	N
5137/54	A/don	\$ 13,800	A	\$ 13,800	\$ -	9/1/2011	9/1/11	8/31/12	e2020 (education 2020)	S	1 year user license - Education 2020 online curriculum	Monitored by educational and technical staff	Y
5137/54	A	\$ 840	M	\$ 10,080	\$ 6,608.00	7/1/2011	7/1/11	6/30/12	K&M Janitorial Service	S	Cleaning of 3 cottages and 1 office once a week	Monitored by office staff	Y
5137/54	A	Per payroll fee	O	\$ 2,500	\$ -	10/1/2003	year	year	Ceridian Payroll Service	S	Process payroll and taxes semi monthly	Monitored monthly by Fiscal Manager	Y
8902/54	N	\$ 14,000	O	\$ 14,000	\$ -	1/13/2011	1/13/11	6/30/11	Dragonfly Hawaii, LLC	S	17 days of individualized teacher development	Invoices and services performed are verified with deliverables stated on contract	Y
8902/54	N	\$ 10,000	O	\$ 15,000	\$ -	7/1/2011	7/1/11	6/30/11	Marvin Puakea Nogelmeier	S	Olelo Hawaii professional development for staff/kumu	Invoices and services performed are verified with deliverables stated on contract	Y
8902/54	N	\$ 101,559	O	\$ 101,559	\$ -	7/1/2011	7/1/11	6/30/12	SchoolRise Hawaii	S	Standards based change process-teacher/staff professional development around staircase curriculum	Invoices and services performed are verified with deliverables stated on contract	Y
8902/54	N	\$ 46,000	O	\$ 46,000	\$ -	6/7/2010	7/1/11	10/31/11	Moxie Production	S	Development of curriculum guides, handbook, grant reporting/evaluation	Invoices and services performed are verified with deliverables stated on contract	Y



Department of Education - Charter Schools  
Active Contracts

Table 19

Prog ID	MOF	Amount	Frequency (M/A/O)	Max Value	Outstanding Balance	Date Executed	From	To	Organization	Category G/S/E/L	Description	How Contract is Monitored	POS Y/N
Private funds/547	A/DON	\$ 23,650	O	\$ 23,650	\$ -	1/13/2011	1/13/11	6/30/11	Konane Consultants, LLC	S	Leadership Development, Board Training in Financial Sustainability	Invoices and services performed are verified with deliverables stated on contract	Y
15137/547	A	\$ 19,500	O	\$ 19,500	\$ -	11/2/2010	11/2/10	N/A	Choo, Osada & Lee CP	S	Financial audit FY2010	Invoices and services performed are verified with deliverables stated on contract	Y
5137/5547	A	\$ 18,999	M	\$ 683,964	\$ 683,964	8/1/2011	8/1/11	7/31/14	Go Financial Corp.	L	Lease for Oahu Learning Center	LSB	N
5137/5547	A	\$ 3,000	M	\$ 36,000	\$ 36,000	8/1/2011	8/1/11	7/31/12	Princeville SC LLC	L	Lease for Kauai Learning Center	LSB	N
5137/5547	A	\$ 4,498	M	\$ 123,806	\$ 101,314	7/1/2011	7/1/11	6/30/14	TEQlease	E	Apple computer lease	LSB	N
5137/5547	A	\$ 23,504	M	\$ 846,126	\$ 248,251	7/1/2010	7/1/10	6/30/13	Somerset Leasing	E	Apple computer lease	LSB	N
560		\$ 2,500	M		\$ -	06/22/09	06/22/09	present	Peter Vana	L	Property Lease - Month to Month	Month to Month	N
560		\$ 50	O - hourly			08/01/11	08/01/11	present	John Bush	S	Professional Services - Computer Support	Per Invoice	Y
560		\$ 1,708	M			08/16/11	08/16/11	present	Shannon Mann	S	Budget Reports, Year-end Financial Reports, Budget Proviso Forms, Budget Briefing Tables to the State Legislature	Per Deliverable	Y
560		\$ 1,659	O - quarterly	variable - depending upon copy overage	\$ -	10/28/11	10/30/11	1/29/12	Toshiba	S	Copier Maintenance	Quarterly	Y
562	DON	\$ 459,216	M	\$ 459,216	\$ 159,216	12/9/2010	7/1/11	6/30/14	Kama'aha Education Initiative formerly known as Kako'o Ka 'Umeke, Inc.		Rent for 5-10 facilities		
5137/5547	A	\$ -				7/1/2011	7/2/11	6/30/12	Amigo's	G	School Lunch Program	Administration	N
5137/5547	A	\$ 10,000	A			7/1/2011	7/1/11	6/30/12	Carbonaro DeMichele	S	Audit Annual	Administration	Y
5137/5547	A					12/1/2010	7/1/11	6/30/12	Ceridian Payroll Service	S	Payroll	Administration	Y
5137/5547	A	\$ 5,665	A			3/21/2011	7/1/11	6/30/12	Discover Education, Inc	G/S	Educational Web service	Administration	Y
5137/5547	A					11/1/2011	7/1/11	6/30/12	HFM	G	Food Service	Administration	N
5137/5547	A					7/9/2011	7/1/11	6/30/12	HFN	G	Fuel for Vans	Administration	N
5137/5547	A	\$ 265,000	A			5/20/2011	5/20/11	6/30/12	K-12, Inc	S/G	Educational Web service/ product	Administration	Y
5137/5547	A	\$ 2,000	A			7/1/2011	6/30/12	6/30/12	MIL	S	Maui Inter Sports	Administration	N
5137/5547	A	\$ 5,000	A			7/1/2011	7/1/11	6/30/12	NCS Pearson, Inc	G/S	Student Information System	Administration	Y
5137/5547	A	\$ 780	M			7/1/2011	7/1/11	6/30/12	Oceanic Time Warner	S	Cable connects	Administration	N
5137/5547	A					7/1/2011	7/1/11	6/30/12	OHCNP	G/S	Contract with OHCNP	Administration	N

Department of Education - Charter Schools  
Active Contracts

Table 19

Prog ID	MOF	Amount	Frequency (M/A/O)	Max Value	Outstanding Balance	Date Executed	From	To	Organization	Category G/S/E/L	Description	How Contract is Monitored	POS Y/N
5137/554	A	\$ -				7/1/2011	7/1/11	6/30/12	PhilMart	G	Foodservice	Administration	N
5137/554	A	\$ 312	M			7/1/2011	7/1/11	6/30/12	Security Tech, LLC	S	Alarms	Administration	N
5137/554	A	\$ -				7/1/2011	7/1/11	6/30/12	Sharky's	G	Foodservice	Administration	N
5137/554	A	\$ 97,000	M			7/1/2011	7/1/11	6/30/12	SMLO, Inc	L	MOU Facilities/ Vans	Administration	N
5137/554	A	\$ 55	M			7/1/2011	7/1/11	6/30/12	TransAmerica Life	S	Benefit	Administration	N
5137/554	A					7/1/2011	7/1/11	6/30/12	UH Maui College	S	Running Start Dual Credit program	Administration	N
5137/554	A	\$ 900	A			7/1/2011	7/1/11	6/30/12	Untapped Tech, LLC	S	teacher info sites	Administration	N
5137/554	A	\$ 1,900	M			7/1/2011	7/1/11	6/30/12	Verizon Wireless	S	Phones	Administration	N
5137/554	A	\$ 51	M			7/1/2007	7/1/11	6/30/12	Xerox Corp.	E	printer	Administration	N
5137/554	A	\$ 1,500	M			7/1/2007	7/1/11	6/30/12	Wavecom	S/E	Ian lines	Administration	N
5137/554	A	\$ 252	M			10/11/2011	10/11/11	10/11/14	Toshiba	E	Copier	Administration	N
5137/398	A	\$ 87,269	A	\$ 87,269	\$ 43,635	5/5/2011	8/1/11	5/24/11	HIDOE-School Food Sv	G/S	Student Meals-Delivery Services	Checklists/Invoices	Y
5137/398	A	\$500/mo	M	\$ 12,000	\$ 12,000	12/11/2011	12/11/11	12/11/12	Xerox	G	Copy machines	Monthly bill	Y
5137/398	A	\$3,600/mo	M	\$ 43,200.00	\$ 21,600	7/1/2011	7/1/11	6/30/12	St. Theresa Parish	E	Facilities Rental	Monthly inv/review	N
5137/398	A	\$15/hr	M	\$ 6,223	\$ -	8/15/2011	8/15/11	12/31/11	S Luquin-Bernhardt	S	Part-time Tutor	Timesheet/Sign-in	Y
5137/398	A	\$3000/mo	M	\$ 12,000	\$ 10,500	12/6/2011	12/6/11	4/5/11	M Kealamakia	S	Testing Coordinator	Timesheet/Sign-in	Y
5137/398	N	\$ 11,249	A	\$ 11,249	\$ -	4/13/2011	11/7/11	1/30/12	Carbonaro CPA & Ass	S	FY 10-11 Audit	Invoices/Direct Contact	Y
15137/564	A	\$ 183.34	Weekly	\$ 7,150	\$ 4,400	9/14/2011	9/14/2011	6/14/2012	Squeaky Clean Clean	S	Deep cleaning services	Oversight by staff	Y
5137/398	A	\$30,000	M	\$360,000	\$ -			open	DayLum Management	L	Rental Space for K-8	By the school	
5137/398	A	\$11,800	M	\$141,600	\$ -	8/1/11	7/31/12	open	Nani Mau , Inc	L	Rental Space for 9-12	Business	
5137/398	A	\$700	M	NA	\$ -			open	L&K Services	S	Cleaning	Manager	
5137/398	A	\$5,100	O- 2 pmts	\$10,200	\$ 5,100	12/25/11	1/10/12	5/29/12	Cyril Pahinui	S	Music Lessons/Instructional		
5137/398	B	\$4,300	O- 2 pmts	\$15,000	\$ 10,700	9/28/11	9/28/11	Completion	Atlas Engineering	S	Survey		
5137/398	A	\$177	bi monthly	NA	\$ -	12/28/11	12/28/11	open	Hilo Air Conditioning	S	AC Maintenance		
5137/398	A	\$233	bi monthly	NA	\$ -			open	Rainbow Isle Refrigeration	S	AC Maintenance		
5137/398	A	\$492	M	NA	\$ -	10/10/03	10/10/03	open	Countryside Express	S	Trash Removal		
5137/398	A	\$55	M	NA	\$ -	7/1/01	7/1/01	open	Alert Alarm	S	Alarm Services		
5137/398	A	\$78	M	NA	\$ -	12/17/08	12/17/08	open	Bowman	S	Pest Control		
5137/398	A	\$234	semi monthly	NA	\$ -			open	Ceridian	S	Payroll Services		
5137/398	A,N,W	\$4,500	O- Weekly	NA	\$ -	7/1/11	7/1/11	6/30/12	Boyd Enterprises	G	Meal Vendor		
5137/398	A	\$1,200	O- 2 pmts	\$2,400	\$ 1,200	11/18/11	11/18/11	Completion	Hawaii Digital	S	Videography/Instructional		
5137/398	A	\$500	M	\$6,000	\$ 3,500	7/1/2011	7/1/2011	6/30/11	Cheryl Gravela	S	Book Keeping		
5137/564		\$ 10,000	O	\$ 10,000	\$ 5,000	10/1/2011	10/1/11	1/15/12	Jay Miyaki, CPA, LLC	S	Annual Audit	Weekly Progress Reports to Satisfactory Completion By Deadline	Y
5137/564		\$ 130	M	\$ 130	N/A	9/1/2005	9/1/05	9/1/35	Haw. Home Lands	L	Lease of Land	N/A	N

Department of Education - Charter Schools  
Active Contracts

Table 19

<u>Prog ID</u>	<u>MOF</u>	<u>Amount</u>	<u>Frequency (M/A/O)</u>	<u>Max Value</u>	<u>Outstanding Balance</u>	<u>Date Executed</u>	<u>From</u>	<u>To</u>	<u>Organization</u>	<u>Category G/S/E/L</u>	<u>Description</u>	<u>How Contract is Monitored</u>	<u>POS Y/N</u>
5137/564		\$ 7,700	M	\$ 7,700	N/A	1/5/2012	2/1/05	present	Makena Inc.	S	Accounting	Quarterly Review By LSB	Y
5137/564		\$ 5,000	M	\$ 5,000	N/A	8/1/2011	8/1/11	12/31/11	Pure Hearts Inc.	S	Technology Consulting and Services	Monthly Review	Y
5137/549		\$ 4,971	monthly	\$ 59,652	\$ 39,768	7/1/2011	7/1/11	6/30/12	The Edith Kanaka'ole	L	year to year contract	monthly	
5137/549		\$ 1,200	monthly	\$ 14,400	\$ 9,600	7/1/2011	7/1/11	6/30/12	James Cameron Walte	S	yearly contract	monthly	
5137/549		\$ 100	monthly	\$ 1,200.00	\$ 800	7/1/2008	7/1/08	7/1/13	DHHL	L	5 year contract	monthly	

Department of Education - Charter Schools  
CIP Summary

Table 20

<u>Priority</u>	<u>Project Title</u>	<u>FY13 \$\$\$</u>	<u>MOF</u>
1	KE KULA NIIHAU O KEKAHA PCS PHOTOVOLTAIC PANEL ARRAY, KAUAI	187,000	C
2	KANUIKAPONO PCS PHOTOVOLTAIC PANEL ARRAY, KAUAI	71,000	C
3	KAWAIKINI PCS PHOTOVOLTAIC PANEL ARRAY, KAUAI	216,000	C
4	VOLCANO PCS PHOTOVOLTAIC PANEL ARRAY, HAWAII	85,000	C
5	WEST HAWAII EXPLORATIONS ACADEMY PCS CAMPUS RELOCATION, HAWAII	5,000,000	C
6	VOLCANO SCHOOL OF ARTS & SCIENCES PCS CAMPUS RELOCATION, HAWAII	4,899,000	C
7	HAKIPU`U LEARNING CENTER PCS NEW CAMPUS, OAHU	1,404,000	C
8	KANU O KA AINA PCS KUKULU PROJECT, HAWAII	8,475,000	C
9	KAWAIKINI PCS SAFETY LIGHTING AND ACCESSIBILITY, KAUAI	204,000	C
10	HALAU KU MANA PCS CLASSROOM RENOVATION, OAHU	25,000	C
11	KAWAIKINI PCS LIBRARY AND COMPUTER LAB, KAUAI	500,000	C
12	KANUIKAPONO PCS MODULAR CLASSROOM RENOVATION, KAUAI	79,000	C
13	KANU O KA AINA PCS CLASSROOM RENOVATION, HAWAII	250,000	C
14	THE EDUCATION LABORATORY PCS REPLACEMENT BUILDING, OAHU	2,000,000	C
15	KA UMEKE PCS MODULAR CLASSROOMS, HAWAII	750,000	C

Department of Education - Charter Schools  
Division Resources

Table 21

<u>Division</u>	<u>Associated Program IDs</u>
-----------------	-------------------------------

Department of Education - Charter Schools  
Organization Changes Chart

Table 22

<u>Year of Change</u> FY12/FY13	<u>Page Number</u>	<u>Description of Change</u>
See attached organizational chart		