



**Senate Committee on Ways and Means  
& House Committee on Finance  
Joint Budget Briefing  
January 6, 2015, 1:30pm**

**FY 15 and Biennium FY 16 and FY 17**

**Board of Trustees**

Robert K. Lindsey Jr.  
Chair, Hawai'i Island

S. Haunani Apoliona  
Trustee-At-Large

Daniel C. Ahuna III  
Trustee, Kaua'i & Ni'ihau

Carmen Hulu Lindsey  
Trustee, Maui

Rowena N. Akana  
Trustee-At-Large

Lei Ahu Isa  
Trustee-At-Large

Peter Apo  
Trustee, O'ahu

Colette Y. Machado  
Trustee, Moloka'i & Lāna'i

John D. Waihe'e IV  
Trustee-At-Large

**Administration**

Dr. Kamana'opono M. Crabbe  
Ka Pouhana, Chief Executive Officer

## TABLE OF CONTENTS

<b>OVERVIEW</b>		Page
A. Office of Hawaiian Affairs' (OHA) Mission .....		3
Table 1. Key Education, Economic and Health Indicators .....		4
B. Current Economic Conditions & Notable Performance		
1. Current Economic Conditions .....		5
2. Notable Performance, Results and Expected Outcomes .....		6
Table 2. Summary of FB 16/17 Projected State Leveraged Impact; Notable Performance: State Funds Leveraged 3.5:1 .....		7

## **FEDERAL FUNDS**

C. Impact of Federal Funding Changes .....	8
--	---

## **BUDGET REQUEST**

D. Budget Development Process and Priority Requests		
1. Budget Development Process.....	9	
2. Overview and Priority of Requests.....	10	
Table 3 Overview of OHA's Budget Request by Priority Area.....	10	
E. Significant Budget Adjustments and Related Outcomes .....	11	
Summary of OHA's Budget Request and Projected State Leveraged Impact .....	12	
1. Social services .....	13	
2. Legal services .....	14	
3. Education .....	15	
4. Health .....	16	
5. Housing .....	17	
6. Income .....	18	

## **APPENDICES**

Appendix A – OHA Infographics

## **TABLES**

Table 1 – Table 26 including Organizational Charts

## OVERVIEW

### A. Background and Mission

#### 1. Background

Upon statehood in 1959, Section 5(f) of the Admission Act directed the State to hold lands in trust for five purposes, one of which was “the betterment of the conditions of Native Hawaiians,” as defined in the Hawaiian Homes Commission Act of 1920. In 1978 a Constitution Convention reviewed and revised the responsibilities of Hawai‘i’s government. Among the provisions incorporated into the new State constitution was the establishment of the Office of Hawaiian Affairs (OHA), as a public trust with mandates to better the conditions of Native Hawaiians and Native Hawaiian community in general. In 1979, the legislature enacted Chapter 10 of the Hawai‘i Revised Statutes (HRS) which created OHA as a semi-autonomous self-governing body. Subsequent legislation has defined the amount of the revenue streams accruing to OHA. OHA’s Board of Trustees is composed of nine trustees, five of whom represent specific island districts. OHA’s key administrators include a Chief Executive Officer, Chief Operating Officer and five Departmental Directors ([www.oha.org](http://www.oha.org)).

Hawai‘i is an ethnically-diverse State. Currently, one in five (21.3%) of our island population define themselves as Native Hawaiian. Native Hawaiian households typically consist of larger, multi-generational families with more children, yet earn less income per person than other populations residing in the State of Hawai‘i (American Community Census, 2013). Throughout each county, Native Hawaiians commonly live in the geographical areas of their ancestors, and with greater density in rural areas than metro cities.

#### 2. Mission

OHA’s mission is to mālama (protect) Hawai‘i’s people, environmental resources and assets, toward ensuring the perpetuation of the culture, the enhancement of lifestyle, and the protection of entitlements of Native Hawaiians, while enabling the building of a strong and healthy Hawaiian people and nation, recognized nationally and internationally. According to Hawai‘i Revised Statutes Chapter 10, OHA is the principal public agency in the State of Hawai‘i responsible for:

- Betterment of conditions of Native Hawaiians;
- Performance, development, and coordination of programs and activities relating to Native Hawaiians;
- Assessing the policies and practices of other agencies impacting Native Hawaiians;
- Conducting advocacy efforts for Native Hawaiians; and,
- Serving as a receptacle for reparations.

OHA's 2010-2018 Strategic Plan guides the achievement of its vision and mission. Table 1 outlines the progress made on key strategic indicators related to the priorities and expected future outcomes outlined in this request.

**Table 1.** Key Education, Economic and Health Indicators related to OHA's Budget Request

Target Area	➤ Strategic Indicator <i>Related Measure or Evidence from OHA funding</i>	Progress FY 13- FY 14	Future Target*	\$ Requested from State
<b>EDUCATION</b>				
<b>Adults</b>	➤ Increase number (no.) of students with degrees or certificates from the UH System: 12% by 2018	89% of OHA Target	Maintain progress	\$ 0
	○ No. of scholarships provided in 2014	263/yr	Maintain or increase	
<b>K-12</b>	➤ Exceed Math Standards (Up from 32%)	49% SY2013	Maintain or increase*	\$615,000
	➤ Exceed Reading Standards (Up from 55%)	64% SY2013	65% or greater*	
	○ No. of students OHA help assisted	642/yr 2014	Maintain or increase*	
<b>ECONOMIC</b>				
<b>Income</b>	➤ Median Family Income (>92% of State MFI)	90.6% (-\$7,554)	92% or greater*	\$455,000
	○ Per-Capita Income (% of State & Difference)	69% (-\$9,105)	Narrow gap	
	○ No. who completed Financial Literacy Training to secure OHA economic assistance	216/yr	818/yr*	
<b>Housing</b>	➤ Homeownership (Up from 56.2% )	56.7%	58%	\$455,000
	➤ Pay more than 30% of Income on Rental housing expenses (39.4% in 2007)	51.2%	Reduce	
	○ No. of individuals assisted	N/A	434/yr*	
<b>Social Services</b>	○ No. of individuals assisted	3,625	Maintain	\$415,000
<b>HEALTH</b>	➤ Obesity (Down from 49%)	39% FY2013	35% FY2018	\$460,000
	○ No. of individuals who lost weight	227/yr	1,196/yr*	
<b>LEGAL</b>	○ No. of individuals who received legal services including representation	Maintain	Maintain	\$524,400
<b>TOTAL ANNUAL PROGRAMMATIC REQUEST:</b>				<b>\$2,924,400</b>

**Note.** \*= Estimate of future progress is based on securing full funding as requested in this budget proposal.

## B. Current Economic Conditions & Notable Performance

### 1. Impact of Current Economic Conditions

Budget cuts on the State and Federal levels, combined with a volatile stock market have significant indirect impact to OHA's operational funds, programs and/or needs of OHA's beneficiaries in a number of ways.

- **Reductions.** In general, any loss of government funding to beneficiary programs and the organizations that serve them will cause an increased demand for supplemental funding from OHA to ensure that the health, education and other daily needs of our beneficiaries are met. Reduced State appropriations have created a reduction in beneficiary assistance, including but not limited to reductions in: 1) emergency financial assistance programs, 2) case management services which assist beneficiaries to access community resources, 3) clinicians providing mental health and substance abuse counseling and support, and 4) health monitoring/navigation programs that assist those with chronic disease to get needed medical care.

Example of loss of federal funding: Due to the sequestration in 2013, funding for the Housing Choice Voucher (HCV) rental subsidy program (previously known as Section 8), which is primarily funded through Federal funds, was reduced, impacting Hawai'i's families. As a result 865 fewer households in Hawai'i were served than the year prior. Relatedly, county housing wait lists under the HCV program are either closed or have long wait lists (per OHA's *Hawai'i Renters Study 2013*, as much as 70% of Native Hawaiian households have waited three or more years on one of the county's wait list). The reduction in funding has likely intensified Hawai'i's affordable rental housing challenges, including high rates of overcrowding and unsheltered homeless Native Hawaiian families.

- **Reduced Program Funds.** Trust funds available to OHA decreased due to under-performance of its investment portfolio as a result of the volatile stock market. Continued legal challenges that could seriously impact Native Hawaiians will continue to require financial resources that could otherwise be used to address beneficiary needs.
- **Beneficiaries.** The volatile economic situation before, during, and after the Great Recession of 2008 have resulted in higher costs of living (i.e. housing and food) than wage increases. This has exacerbated Native Hawaiians' lower per capita income, high rates of homelessness, and higher rates of poverty. Research indicates that Native Hawaiians have recovered at a slower rate than others, and that children, particularly those under five, are affected the most.
- **Bottom Line.** State and federal budget cuts have reduced services and programs that previously serviced OHA beneficiaries. As a result, these beneficiaries often turn to OHA to

fill the gap. In recent years, the number of beneficiaries that OHA serves per year has increased 50%. Also, increasingly non-profit and other social services organizations have looked to other avenues to support their work have turned to OHA for support.

## **2. Notable Performances**

**Enhanced performance measures.** In the quest to improve conditions for Native Hawaiians, OHA continues to work closely with many community-based partners who continue to play a critical role in the successes presented in Table A. OHA remains encouraged by visible signs of progress with helping Hawai'i's citizens improve their health; improve their economic self-sufficiency; secure stable housing; improve skills in reading and math; and protect legal rights. Close collaboration between OHA's grant, research, and communications staff with service providers has transformed OHA into a more transparent and accessible grantor. Currently all OHA community grant applications, from each county and for every grant type, are submitted online at OHA's updated website - [www.oha.org](http://www.oha.org). Within the last year OHA has continued to align its funded projects with its strategic priorities, increased its grants monitoring, strengthened its grants performance measures, and streamlined its grant processes with input from FY 13-FY 14 providers.

**Significant Return on Investment via OHA and Community Commitment.** Strong demand continues for OHA grant money to help tackle priority issues. Community partners increasingly tailor marketable services to OHA priorities to help them stay afloat and meet critical needs across the State. Agencies contribute in-kind and 20% financial match in each grant request. In turn, OHA funding will allow many well-connected organizations to leverage OHA funds as much as 7:1 (in the area of housing).

**Bottom Line.** State General Funds are highly leveraged through its partnership with OHA, as evidenced by an impressive overall 3.5:1 total impact as depicted in Table 2.

In other words, OHA will turn **\$5.8 million** into **\$20.5 million** to strengthen Hawai'i families and communities.

**Table 2.** Summary of FB 16/17 Projected State Leveraged Impact by Priority Area

Priority Area	State General Funds	OHA Matching Funds	Community Matching Funds	Community In-Kind	Total Investment	Leveraged Impact	Estimated No. of Individuals to be Served	Estimated No. of Native Hawaiians to be Served
Social Services	\$ 830,000	\$ 830,000	\$ 528,687	-	\$ 2,188,687	2.64	7,250	7,250
Legal Services	1,048,800	1,048,800	150,000	75,000	2,322,600	2.21	889	889
Education	1,230,000	1,230,000	811,718	-	3,271,718	2.66	4,492	3,124
Health	920,000	920,000	830,171	94,336	2,764,507	3.00	3,409	2,392
Housing	910,000	3,910,000	1,762,693	119,012	6,701,705	7.36	869	869
Income	910,000	1,910,000	416,147	26,536	3,262,683	3.59	767	767
<b>Total Program Funds:</b>	<b>\$ 5,848,800</b>	<b>\$ 9,848,800</b>	<b>\$ 4,499,417</b>	<b>\$ 314,883</b>	<b>\$ 20,511,900</b>	<b>3.51</b>	<b>17,676</b>	<b>15,291</b>

Notes.

\*Leveraged Impact = Total Investment/State General Funds

\*\*Additional Funds through OHA Partnership (not including OHA in-kind) **\$14,663,100** = \$20,511,900 (Total Investment) - \$5,848,800 (State General Funds)

\*\*\*Projected State Funds Leveraged through OHA Partnership (not including OHA in-kind) **3.51 : 1**

## FEDERAL FUNDS

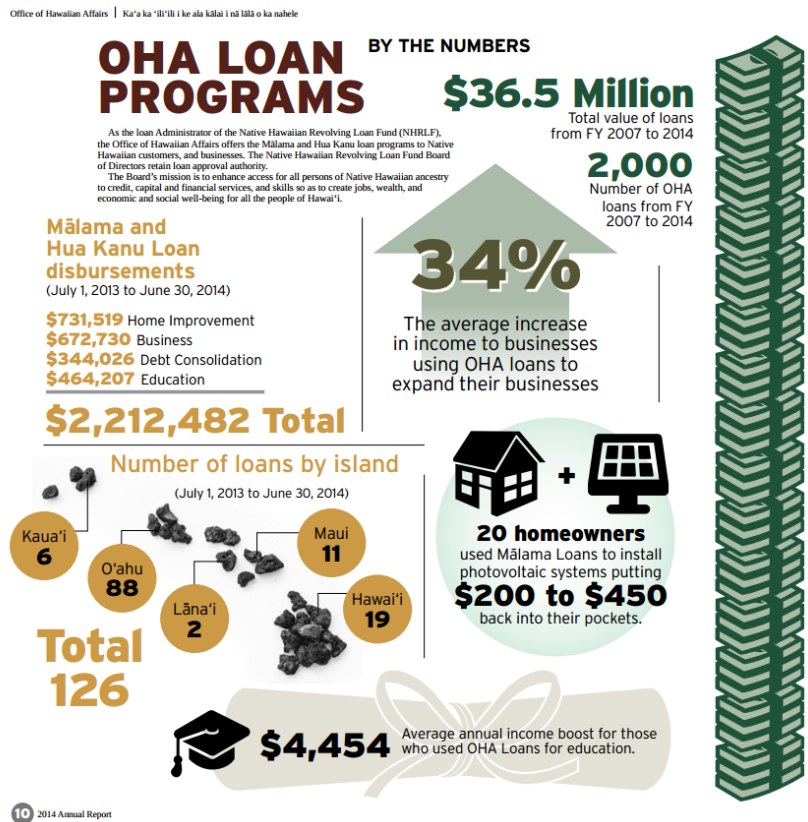
### C. Impending Loss of Direct Federal Funds

OHA currently administers two Federally-funded programs and a Federal grant.

- The Native Hawaiian Revolving Loan Fund (NHRLF), whose mission is to enhance access for all persons of Native Hawaiian ancestry to credit, capital, and financial services to create jobs, wealth, and economic and social well-being for all the people of Hawai‘i;
- The Hālawā Luluku Interpretive Development (HLID) Project, whose three basic goals are compliance, mitigation, and community support relating to the adverse impacts as a result of construction of Interstate Highway H-3.

OHA’s FY 14 Annual Report summarizes the NHRLF’s notable performance on page 10 (as depicted here on the right).

Notable performance includes total loan disbursements of \$36.5 million from FY 07 through FY 14, including a noted average annual income boost of \$4,454 for those loan recipients who used OHA loans for education.



In addition, the United States Environmental Protection Agency awarded OHA two Brownfield Assessment grants for community-wide environmental assessments of hazardous substances and petroleum on Kaka‘ako Makai parcels, which began July 1, 2013. Grant funds will be used to complete Phase II Environmental Site Assessments for six Kaka‘ako Makai parcels, including testing and analysis of subsurface contaminants, no later than September 30, 2016.

As of this time, these awards have not lost, or are not at risk, of losing federal funding.



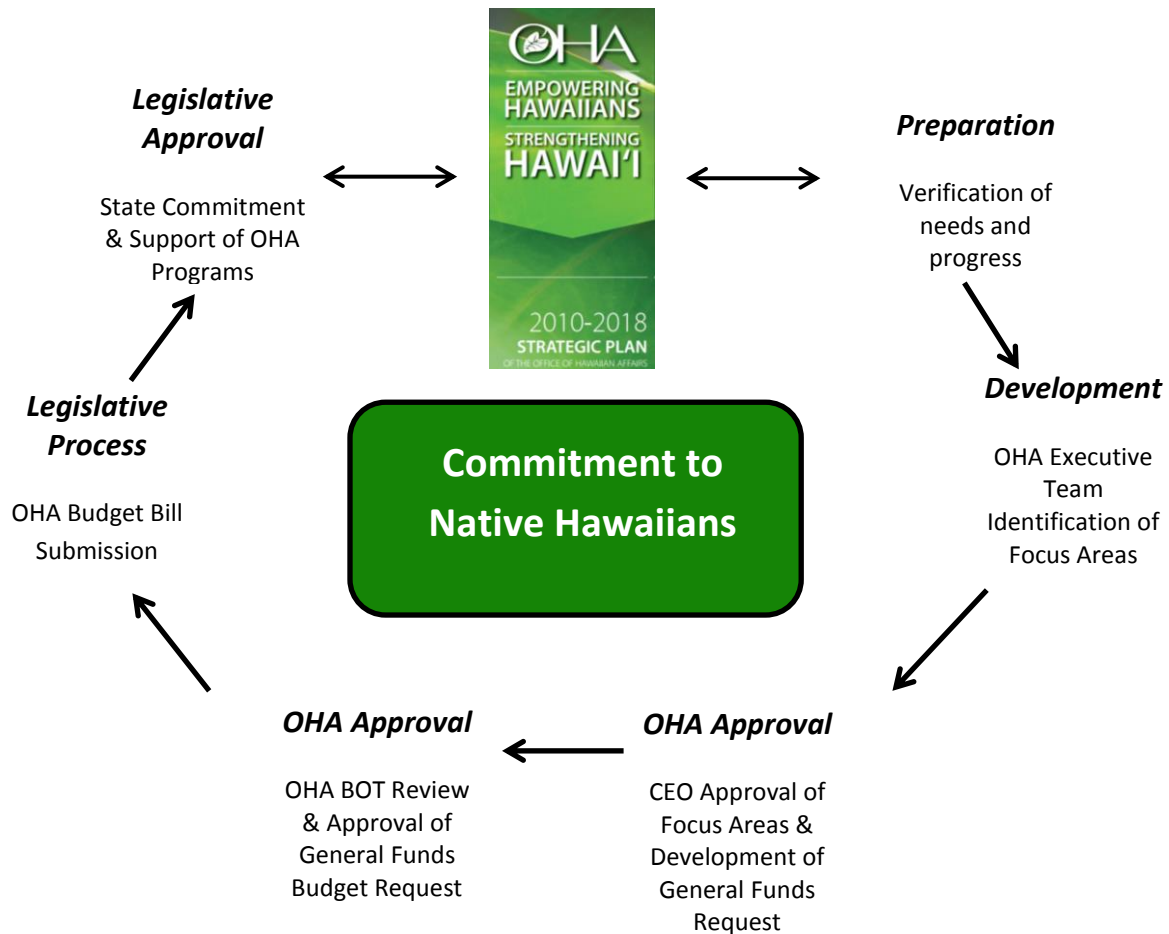
## BUDGET REQUEST

### D. Budget Development Process and Priority Requests

#### 1. Budget Development

As documented in Figure 1, OHA's request centers on both the State and OHA's commitment to Native Hawaiians. The process involves an assessment of priorities, previous progress and needs by OHA's Executive Team prior to Board Approval and eventual Legislative Submission.

**Figure 1.** OHA's General Funds Biennial Budget Development Process



## 2. Summary of Priority Requests

### Overview.

- **Historical Funding.** OHA has received State general funds since 1981 for a portion of its personnel and operating cost and to provide services to beneficiaries in the three priority areas of Social Services, Legal Services, and Education.
- **Changes in the FB 14/15 Biennium.** OHA additionally requested State General Funds assistance in the priority area of Health which targeted programs to reduce obesity.
  - State Funds received by OHA totaled \$638,860
- **Change in the FB 16/17 Biennium.** OHA has prioritized two new priority areas to better address beneficiary need in the areas of Income and Housing. In addition, we expect to expand resources for Health.
  - State Funds requested by OHA totals
    - \$910,000 for Income (new)
    - \$910,000 for Housing (new)
    - \$920,000 for Health (44% increase from the prior biennium)

**Table 3.** Overview of OHA’s Budget Request by Priority Area (per year)

Purpose	FB 14/15 (per year)		FB 16/17 (per year)		Adjustments	
	General Funds	Trust Fund Match	General Funds	Trust Fund Match	General Funds	Trust Fund Match
1. Social Services	\$ 415,000	\$ 415,000	\$ 415,000	\$ 415,000	\$ 0	\$ 0
2. Legal	524,400	524,400	524,400	524,400	0	0
3. Education	615,570	615,570	615,000	615,000	-570	-570
4. Health	319,430	319,430	460,000	460,000	140,570	140,570
5. Housing	0	0	455,000	455,000	455,000	455,000
6. Income	0	0	455,000	455,000	455,000	455,000
Cable TV Content	250,000	250,000	0	0	-250,000	-250,000
<b>Sub-Total Programs:</b>	<b>\$ 2,124,400</b>	<b>\$ 2,124,400</b>	<b>\$ 2,924,400</b>	<b>\$ 2,924,400</b>	<b>\$ 800,000</b>	<b>\$ 800,000</b>
A. Personnel	520,300	3,959,003	520,300	3,959,003	0	0
B. Operations	296,874	296,874	296,874	296,874	0	0
<b>Sub-Total Non Programs:</b>	<b>\$ 817,174</b>	<b>\$ 4,255,877</b>	<b>\$ 817,174</b>	<b>\$ 4,255,877</b>	<b>\$ 0</b>	<b>\$ 0</b>
<b>Totals:</b>	<b>\$ 2,941,574</b>	<b>\$ 6,380,277</b>	<b>\$ 3,741,574</b>	<b>\$ 7,180,277</b>	<b>\$ 800,000</b>	<b>\$ 800,000</b>
<b>FB 16/17 Programs:</b>			<b>\$ 5,848,800</b>	<b>\$ 5,848,800</b>		
<b>FB 16/17 Total:</b>			<b>\$ 7,483,148</b>	<b>\$14,360,554</b>		

In summary, it is with enthusiasm and hope that OHA requests **\$5.8 million** (*\$7.4 million total including personnel and operations*) in State general funds for **programmatic support** during the next biennium. The State's general funds will be leveraged through its OHA partnership to a projected **\$20.5 million** or **3.5:1**, as summarized in Table 2 on page 7.

As of this time, OHA considers all budget requests, including changes, as a priority since these funds will be used as leverage to heavily invest over the next two years in addressing six specific priority areas that are ultimately about helping statewide efforts to strengthen families and communities.

## **E. Significant Adjustments and Related Outcomes**

Although significant funding changes only occur in the areas of Income, Housing, and Health, OHA considers all six specific areas of high priority.

In summary, for OHA's FB 16/17 State General Funds (GF) request includes the following significant adjustments:

### ➤ **NEW REQUESTS.**

- **HOUSING: New** GF match for Housing allotment in the amount of \$455,000/year; totaling \$910,000 for the FB 16/17.
- **INCOME: New** GF match for Income allotment in the amount of \$455,000/year; totaling \$910,000 for the FB 16/17.

### ➤ **ADJUSTMENTS/CHANGES.**

- **EDUCATION: Re-describing** "Educational Enrichment" to "Educational Improvement" allotment to better align with OHA's Strategic Plan:
  - **Decrease** request GF match for Educational Improvement allotment to the amount of \$615,000/year; totaling \$1,230,000 for FB 16/17 (slight decrease (\$570/year) to balance requests across OHA priorities).
- **HEALTH: Deleting** request for support of Lifestyle Choices. Reallocate funds to be used as matching funds for Housing, Income, and Health.
  - **Increase** request GF match for Health Improvement allotment to the amount of \$460,000/year, totaling \$920,000 in FB 16/17.
- **LEVERAGE OPPORTUNITIES: Deleting** request for support of Leveraging Opportunities (which ultimately resulted in funding being allocated for "Cable TV Content").

The following infographic summarizes OHA's overall budget request as well as its projected leveraged impact as it relates to the needs within its six priority areas.

## Summary Infographic

In the quest to improve conditions for Native Hawaiians, OHA has been working closely with many community-based partners to bring new attention, needed resources and a strong policy voice to addressing urgent needs that are critical to address some of the State's greatest needs. OHA remains encouraged by visible signs of progress by helping Native Hawaiians and others improve their health; secure stable housing; improve skills in reading and math; improve their socioeconomic situation; make ends meet; and protect legal rights. In the months ahead, the immediate challenge will be maintaining some of this positive momentum. Strong demand remains for OHA grant money to help tackle these issues as community partners increasingly tailor marketable services to OHA priorities to meet critical needs across the State. These are the same community partners that have proved their value by enhancing OHA's efforts to play a strong role in creating a solid future for Native Hawaiians and all people of Hawai'i.

Moreover, OHA's grant program has improved its capacity as grantors by requiring projects to align with OHA's strategic priorities and by monitoring the grants to ensure adequate progress toward specific and measurable outcomes. For that reason, that OHA requests \$5.8 million (\$7.4 m total) in programmatic State funds for the 2016 and 2017 fiscal years to use as leverage to heavily invest over the next two years in addressing six specific areas that are ultimately tied to helping statewide efforts to strengthen Hawai'i's families and communities.

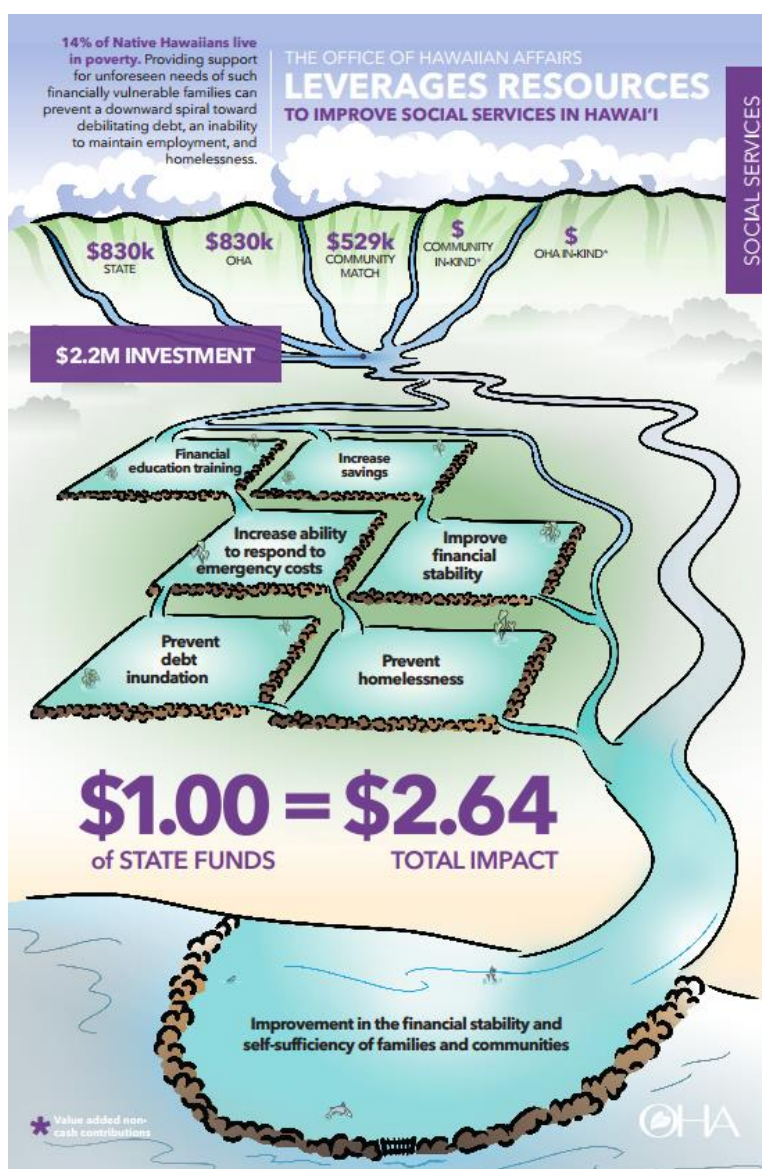
See Appendix A for larger image



## 1. Social services

OHA continues to work every day to help Native Hawaiians who are struggling financially. Research shows that 14 percent of Native Hawaiians live in poverty, a rate that is higher than other families statewide. Emergency situations, such as sudden unemployment, medical issues or family crises, place substantial strain on families in the lowest income brackets and can exacerbate their already dire financial circumstances. OHA's program offers such struggling Native Hawaiians relief when faced with unforeseen circumstances by providing funds to pay for rent and utilities, helping to ensure that they do not fall deeper into poverty, lose employment, or become homeless. Financial-literacy training remains a condition for this emergency assistance, which is part of a larger effort to encourage self-sufficiency.

OHA is committed to matching \$830,000 from the State over the next two years and leveraging it with contributions from community partners to heavily invest in helping more Native Hawaiians make smart-money-management decisions meant to improve the economic well-being and self-sufficiency of their families.



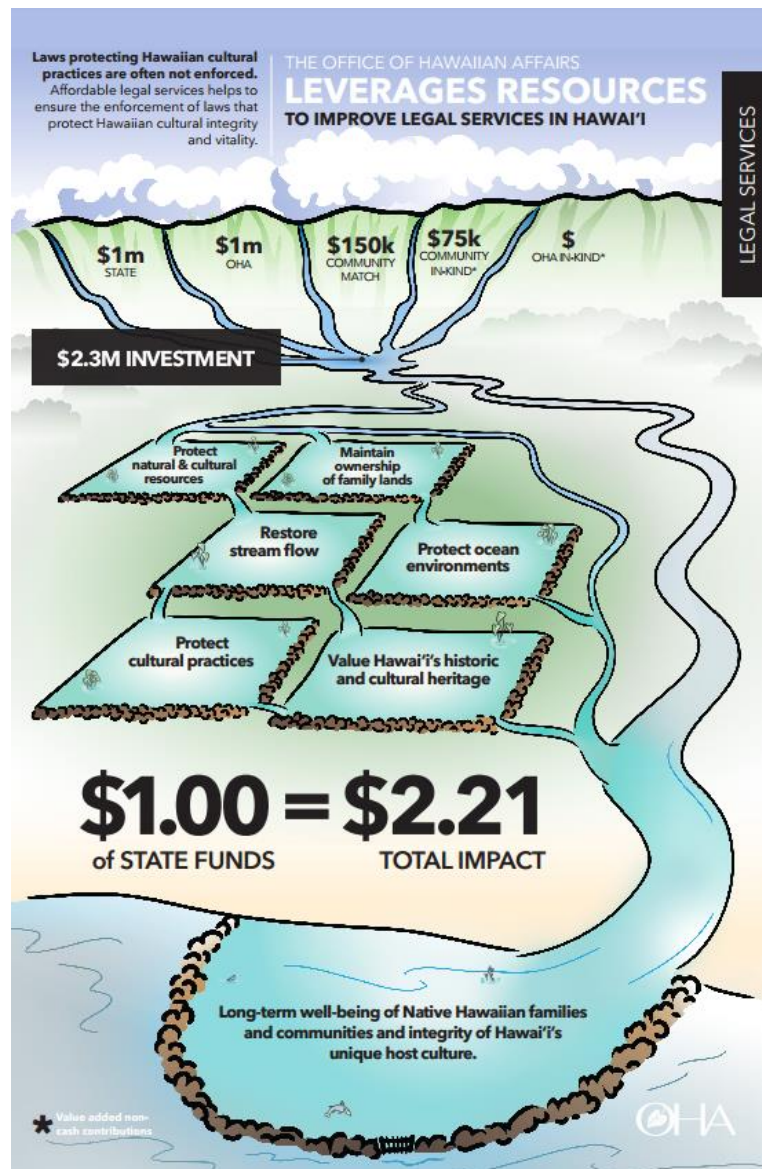
See Appendix A for larger image



## 2. Legal services

Over the next two years, OHA will continue to address the need for legal services which has been and will continue to be critical for Native Hawaiian efforts to perpetuate their culture, and maintain a connection to their ‘āina, their communities, and their ‘ohana. In passing laws that provide protection to cultural sites, the Legislature has found that the “historic and cultural heritage of the State is among its important assets” and has declared that it is the policy of the State to “provide leadership in preserving, restoring, and maintaining historic and cultural property ... in a spirit of stewardship and trusteeship for future generations.” OHA’s legal services ensure such critical State laws passed by the legislature are upheld.

OHA hopes to leverage \$1,040,800 in State funds over the next two years to invest in legal services meant to encourage improvement and consistency in upholding State laws that are in place to protect the interests of Native Hawaiians.



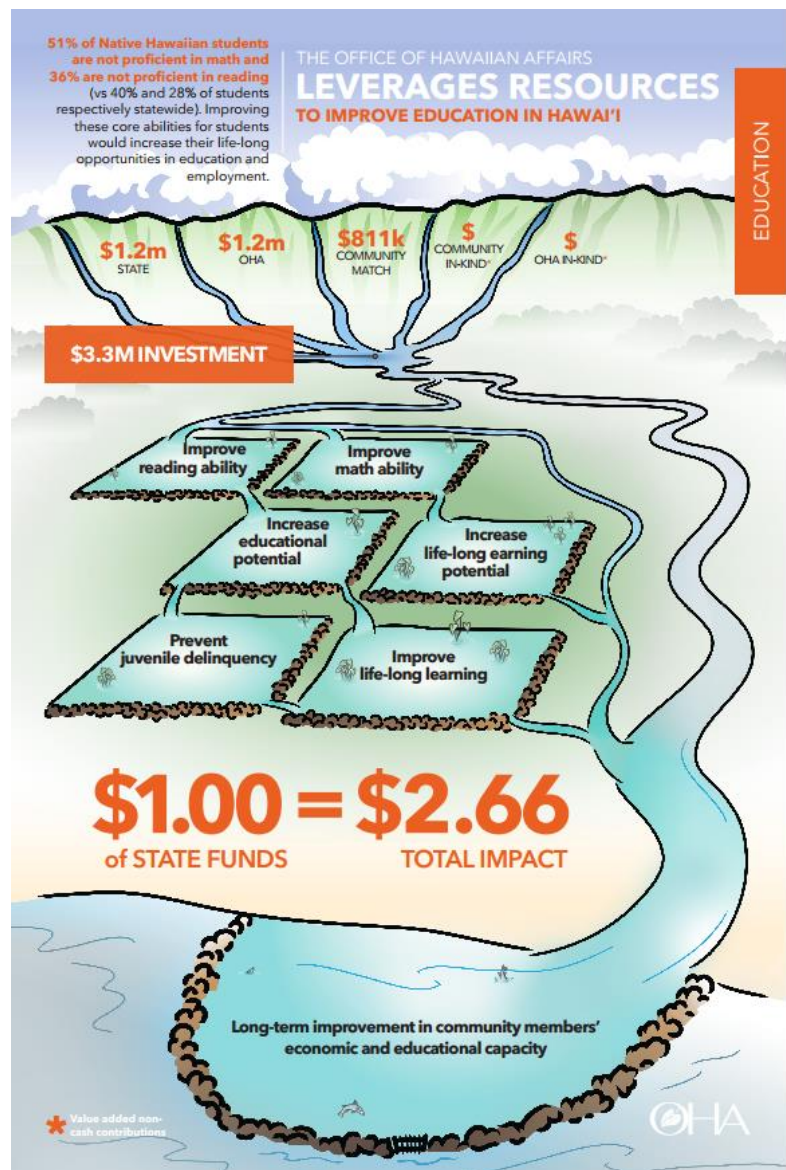
See Appendix A for larger image

### 3. Education

In the year ahead, OHA will be continuing its focus on closing the persistent achievement gap that separates Native Hawaiian students from their peers across the State. New data from the State Department of Education show that a wide gap remains in both reading and math scores. To reverse the trend, OHA is approaching with a sense of urgency its commitment to closing the achievement gaps that threaten to undermine the future success of Native Hawaiian students. A study by Honolulu Community College found that, in good times, Hawai'i needs up to 28,000 trained workers a year to fill new openings and retirement in trades and professions. It also found that the State's ability to fill those positions depends on the effectiveness of its public schools in teaching reading and math skills.

OHA is hoping to partner with organizations to leverage an anticipated \$1,230,000 from the State and invest it over the next two years to address this issue, which is ultimately about creating a stronger future path for Native Hawaiian students. By leveraging funds from the State, OHA and its partners would bring an additional \$2 million to educational programs meant to help Native Hawaiian students graduate from high school with marketable skills to obtain well-paying jobs or pursue a college education.

See Appendix A for larger image

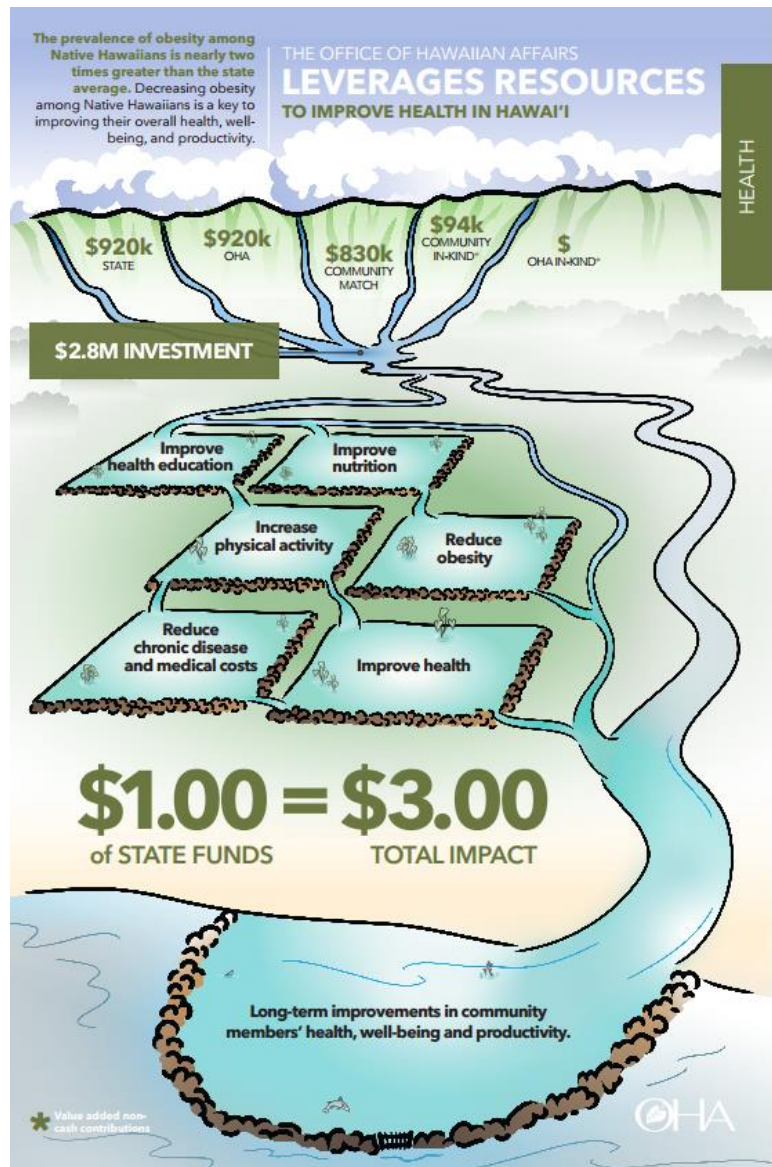


#### 4. Health

To help fight obesity in the state, OHA has been encouraging Native Hawaiians to eat healthier and become more physically active. Research shows that about 76.8 percent of Native Hawaiians are obese or overweight. Obesity associated diseases like diabetes, heart disease and cancer, further contribute to poor wellness and increasing healthcare costs. Already, obesity-related medical costs in Hawai'i are as much as \$412 million annually. To help keep healthcare costs from soaring over weight-related problems such as diabetes and heart disease, OHA has been working closely with a variety of community partners to heavily invest in helping Native Hawaiians live healthier.

OHA's goal is to reduce the obesity rate among Native Hawaiians to 35 percent from 49.3 percent over the next four years. OHA has seen progress with more Native Hawaiians learning the importance of proper nutrition and regular exercise as a result of OHA's health grant initiatives. OHA hopes to match \$920,000 from the State over the next two years and leverage it with other funds to invest in curbing the obesity rate among Native Hawaiians and others, which may help improve their overall health and well-being.

See Appendix A for larger image

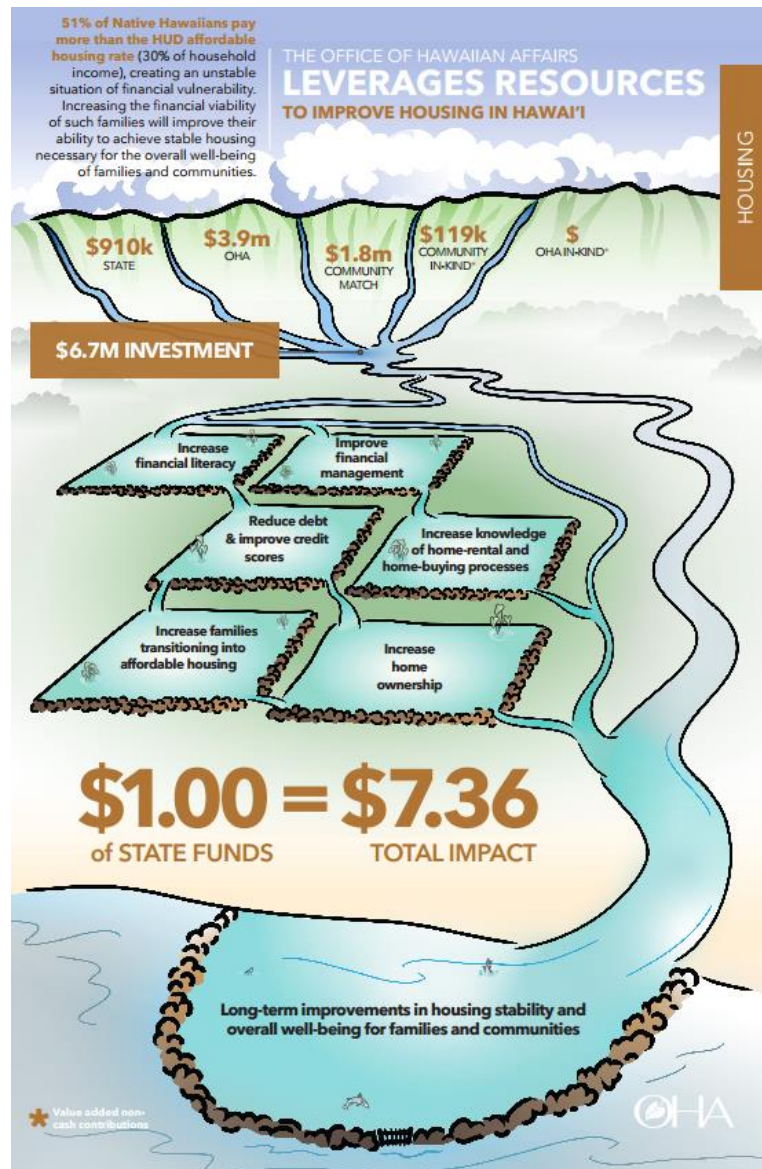




## 5. Housing

OHA continues to focus on helping more Native Hawaiians achieve housing stability. According to the latest available figures, about 57 percent of Native Hawaiians are homeowners. At the same time, more than half of Native Hawaiian renters, many of whom live in overcrowded situations to reduce rental payments, live in homes they are struggling to afford. In addition to being cost burdened, Native Hawaiians also earn less per capita than the state average. In response, OHA has set its sights on leveraging \$910,000 from the state over the next two years to help lay important groundwork for increasing homeownership and building housing stability among renters within the Native Hawaiian community.

With the leverage from the State, OHA and community partners expect to be able to invest \$6.7 million into helping Native Hawaiians obtain affordable housing, become more creditworthy and better at managing finances, and increasing home ownership. OHA has seen real results through its past grantees that have successfully helped Native Hawaiian renters become more economically and housing stable across the State.



See Appendix A for larger image

## 6. Income

To help ensure that employers have the skilled workers they need to serve communities across the state, OHA has been heavily supporting career-training programs aimed at getting a higher percentage of Native Hawaiians better ready for Hawai'i's workforce. Research shows that Native Hawaiians participate in the labor force at higher rates than the state average (65 percent v 61 percent), yet they earn \$9,100 per capita less than the state average and the unemployment rate among Native Hawaiians has nearly doubled to 10 percent over the past decade. At the same time, Hawai'i needs about 28,000 trained workers a year to fill new openings and retirement in trades and professions. But only 14,000 students a year graduate from the state's public and private high schools and many graduates are not ready for college or skilled employment because they lack basic skills in math and reading.

With the help of various community partners and the State, OHA is prepared to heavily invest over the next two years in helping create a pipeline of new workers with GED diplomas, college degrees, and/or critical job skills to obtain well-paying jobs that can support families.



See Appendix A for larger image

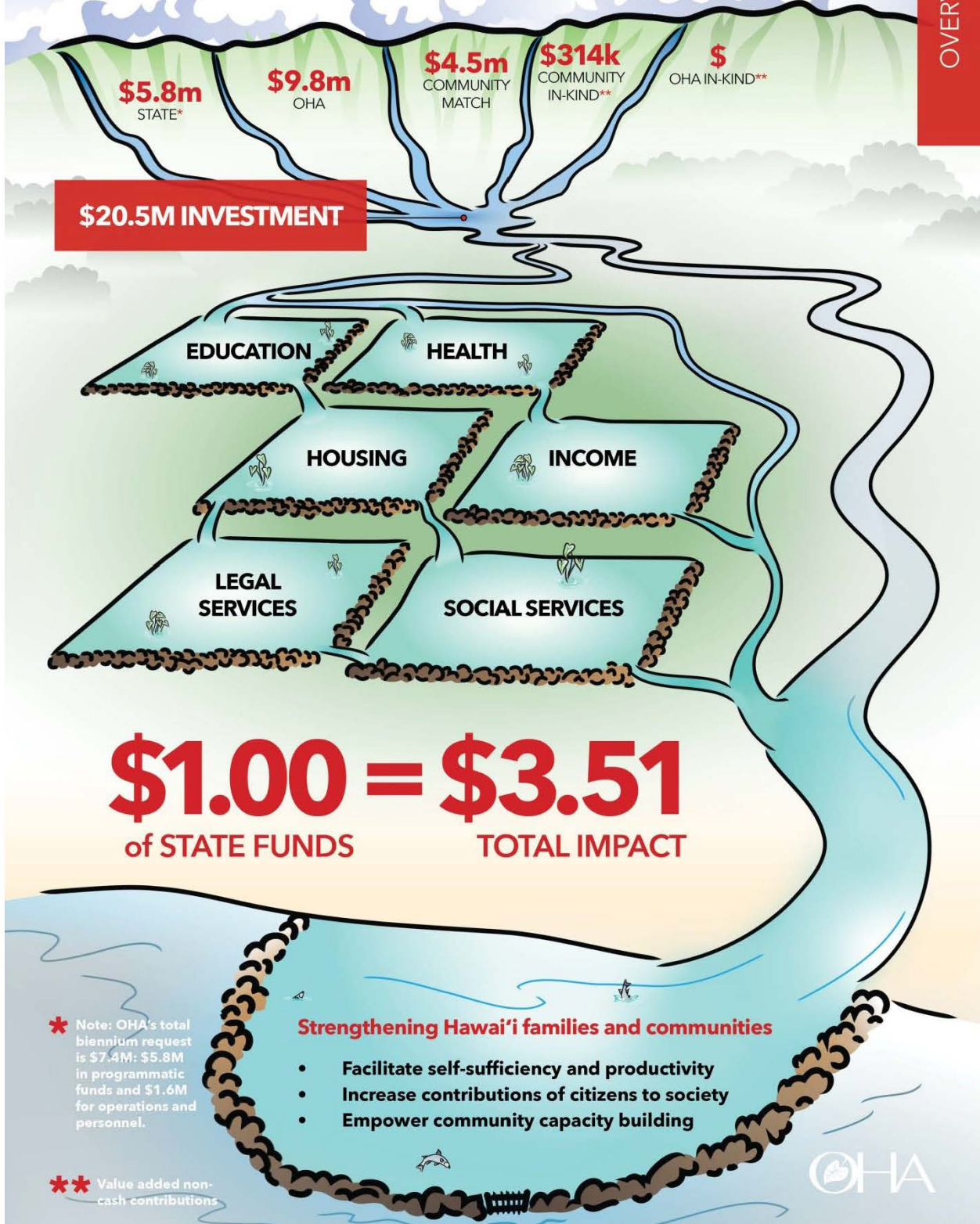
# Appendix A



**Native Hawaiians face some of the greatest needs among Hawai'i's citizens.** Pooling resources to address these needs is an effective way for the State, private organizations, and OHA to meet shared goals.

THE OFFICE OF HAWAIIAN AFFAIRS  
**LEVERAGES RESOURCES**  
**TO IMPROVE HAWAI'I COMMUNITIES**

OVERVIEW



**\$20.5M INVESTMENT**

**\$1.00 = \$3.51**  
of STATE FUNDS      TOTAL IMPACT

\* Note: OHA's total biennium request is \$7.4M: \$5.8M in programmatic funds and \$1.6M for operations and personnel.

\*\* Value added non-cash contributions

**Strengthening Hawai'i families and communities**

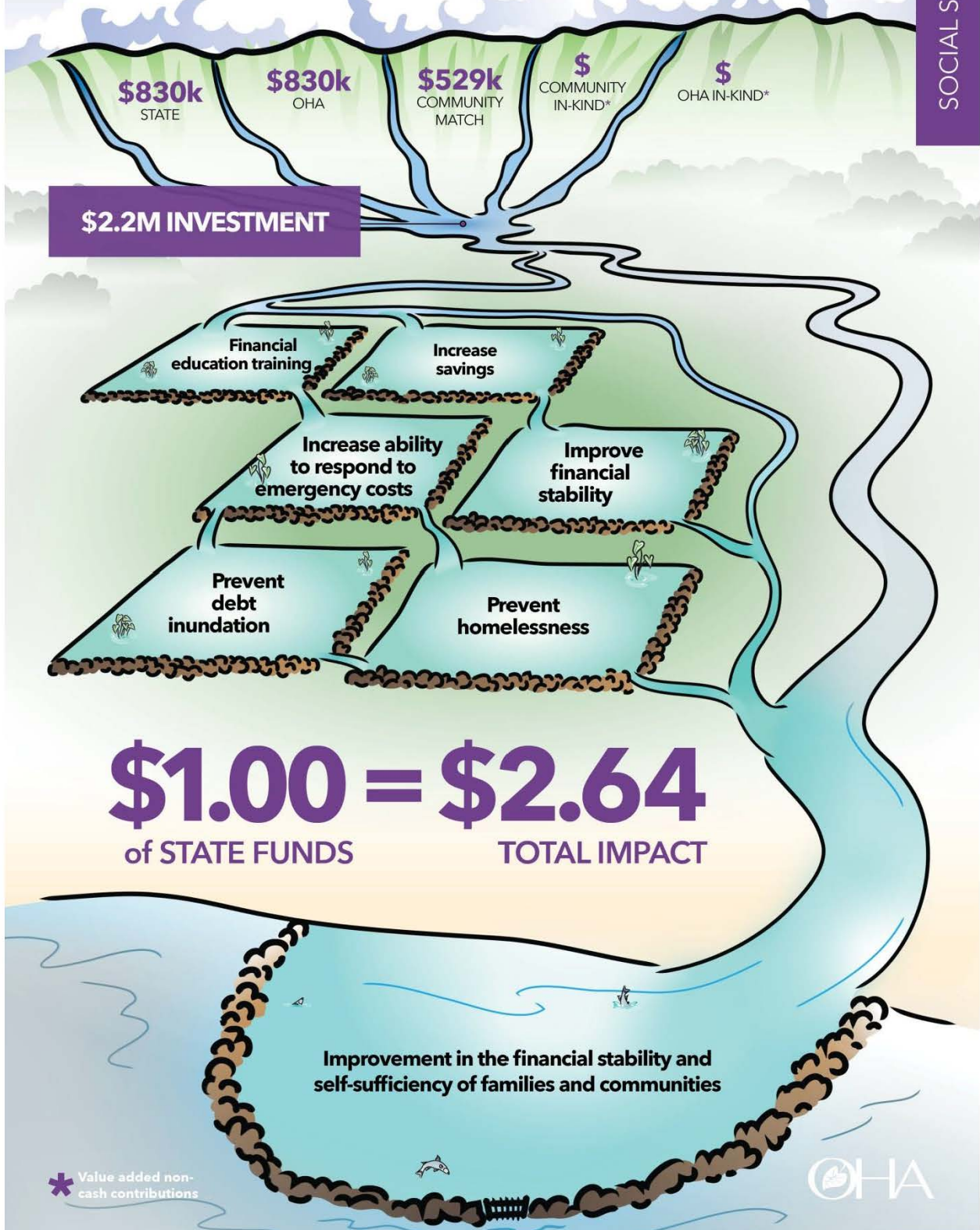
- Facilitate self-sufficiency and productivity
- Increase contributions of citizens to society
- Empower community capacity building



**14% of Native Hawaiians live in poverty.** Providing support for unforeseen needs of such financially vulnerable families can prevent a downward spiral toward debilitating debt, an inability to maintain employment, and homelessness.

THE OFFICE OF HAWAIIAN AFFAIRS  
**LEVERAGES RESOURCES**  
 TO IMPROVE SOCIAL SERVICES IN HAWAII

SOCIAL SERVICES



\* Value added non-cash contributions

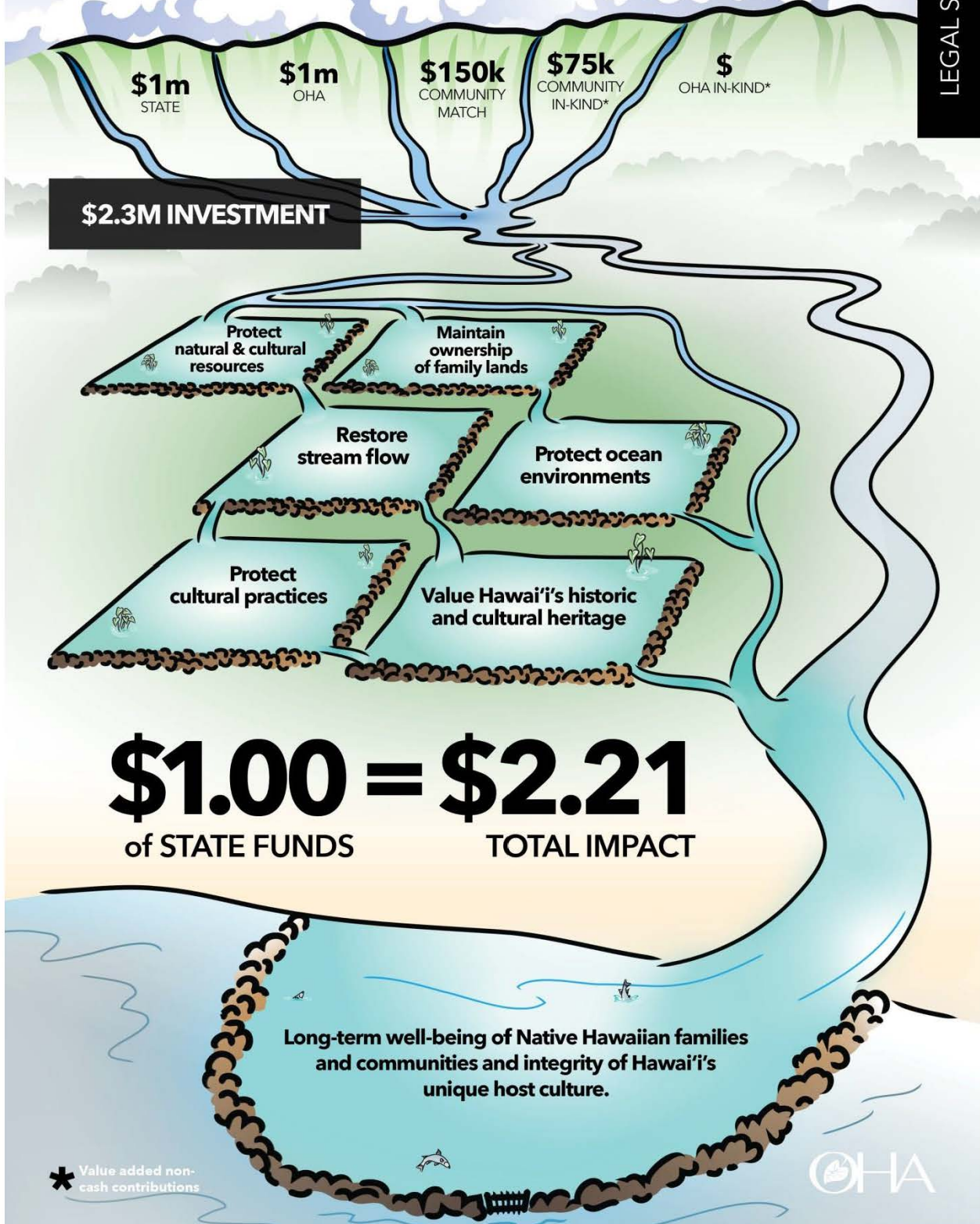




**Laws protecting Hawaiian cultural practices are often not enforced.**  
Affordable legal services helps to ensure the enforcement of laws that protect Hawaiian cultural integrity and vitality.

THE OFFICE OF HAWAIIAN AFFAIRS  
**LEVERAGES RESOURCES**  
TO IMPROVE LEGAL SERVICES IN HAWAI'I

LEGAL SERVICES



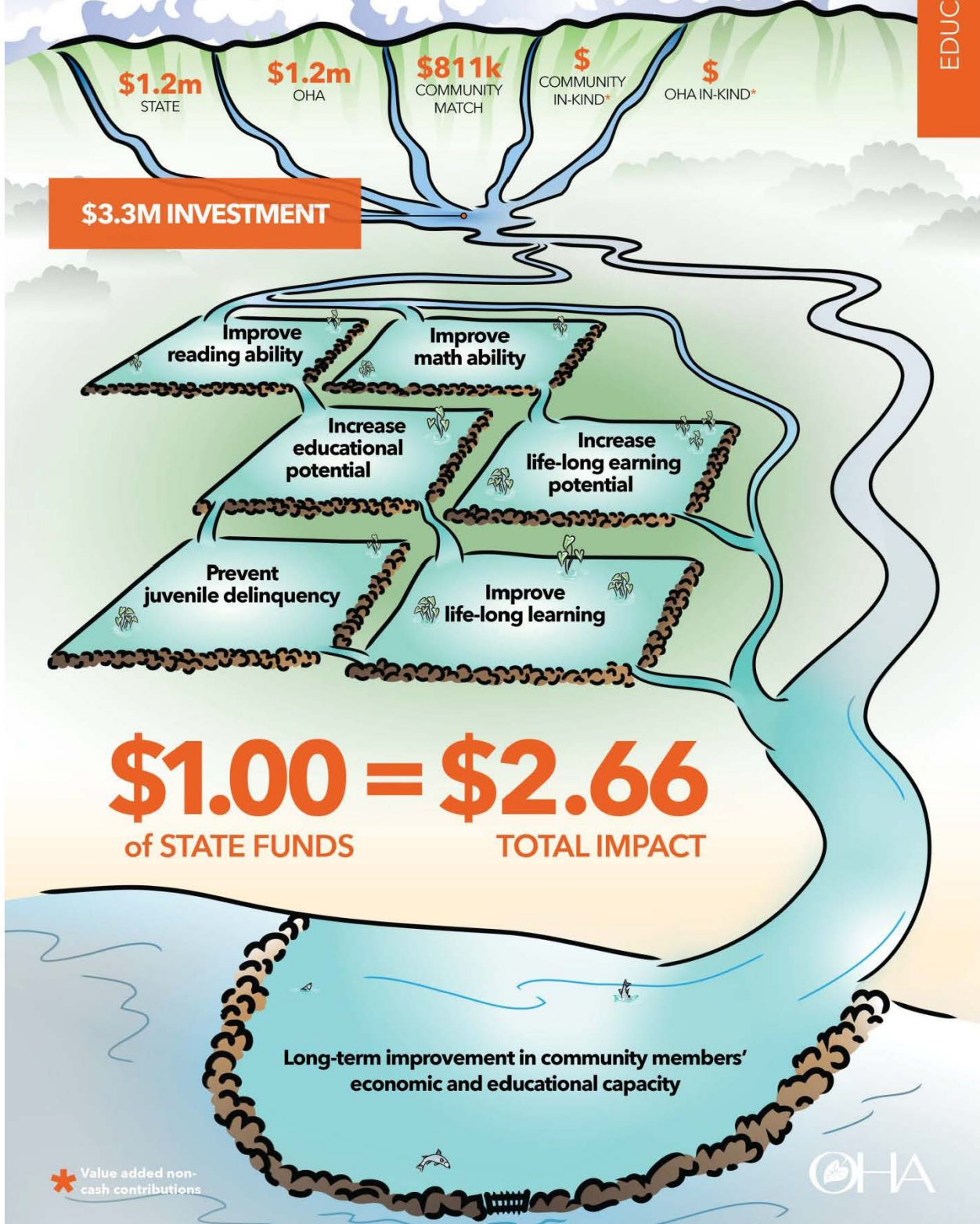
\* Value added non-cash contributions



**51% of Native Hawaiian students are not proficient in math and 36% are not proficient in reading** (vs 40% and 28% of students respectively statewide). Improving these core abilities for students would increase their life-long opportunities in education and employment.

THE OFFICE OF HAWAIIAN AFFAIRS  
**LEVERAGES RESOURCES**  
 TO IMPROVE EDUCATION IN HAWAII'

EDUCATION



**\$3.3M INVESTMENT**

**\$1.00 = \$2.66**  
 of STATE FUNDS TOTAL IMPACT

Long-term improvement in community members' economic and educational capacity

\* Value added non-cash contributions





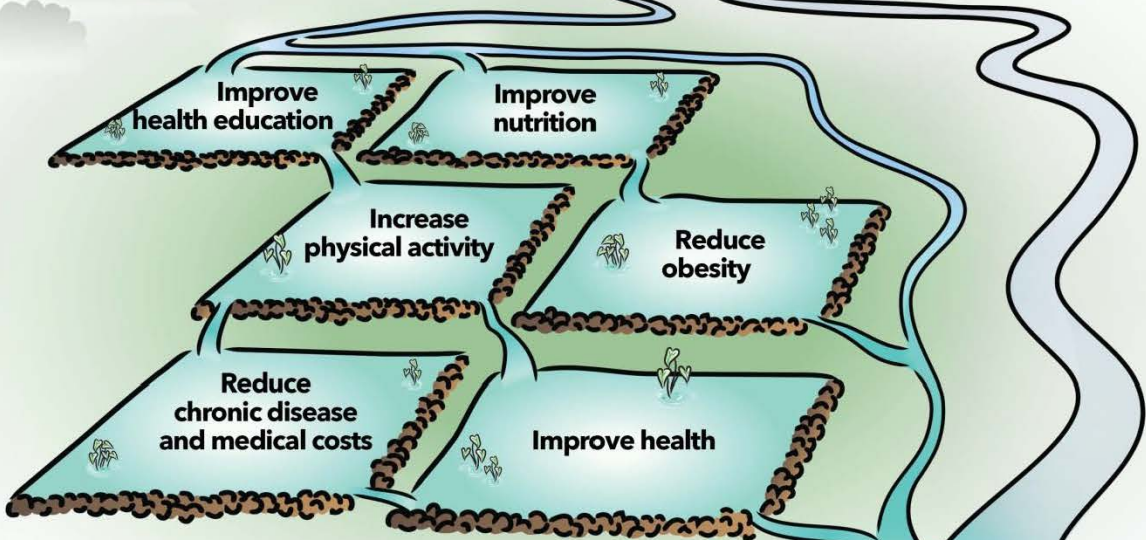
The prevalence of obesity among Native Hawaiians is nearly two times greater than the state average. Decreasing obesity among Native Hawaiians is a key to improving their overall health, well-being, and productivity.

THE OFFICE OF HAWAIIAN AFFAIRS  
**LEVERAGES RESOURCES**  
 TO IMPROVE HEALTH IN HAWAI'I

HEALTH



**\$2.8M INVESTMENT**



**\$1.00 = \$3.00**  
 of STATE FUNDS      TOTAL IMPACT

Long-term improvements in community members' health, well-being and productivity.

\* Value added non-cash contributions

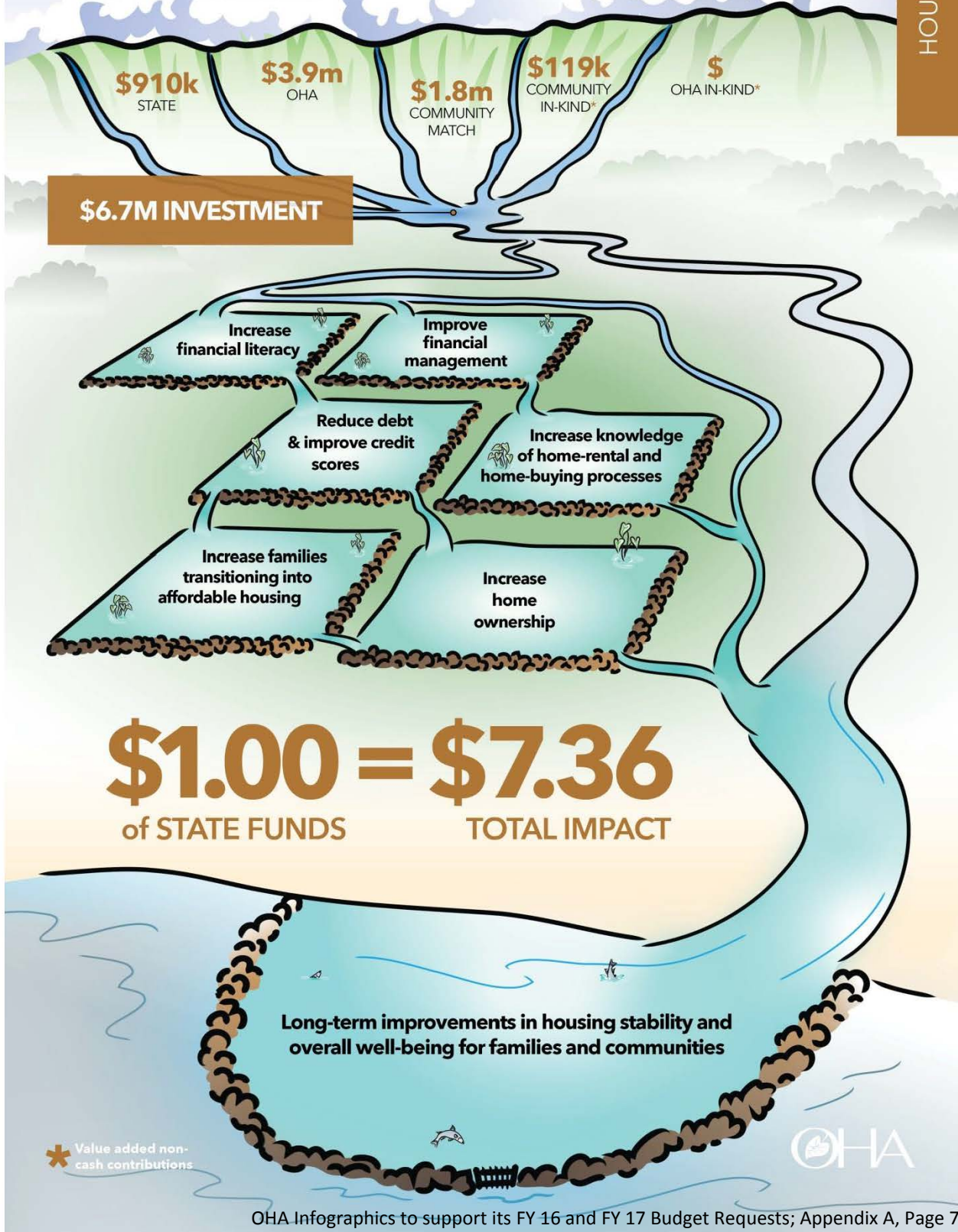




**51% of Native Hawaiians pay more than the HUD affordable housing rate** (30% of household income), creating an unstable situation of financial vulnerability. Increasing the financial viability of such families will improve their ability to achieve stable housing necessary for the overall well-being of families and communities.

THE OFFICE OF HAWAIIAN AFFAIRS  
**LEVERAGES RESOURCES**  
 TO IMPROVE HOUSING IN HAWAI'I

HOUSING



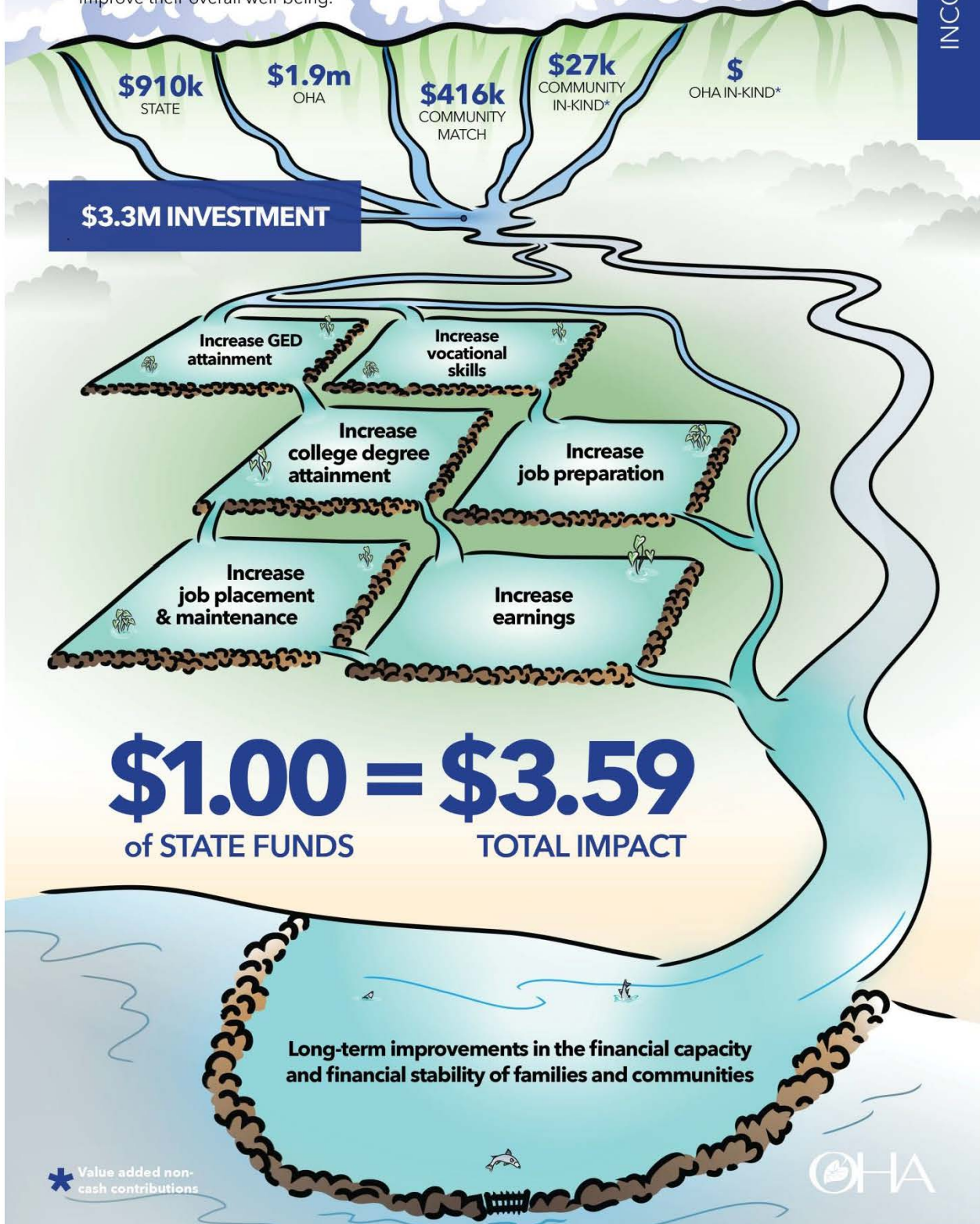
\* Value added non-cash contributions



Native Hawaiians earn \$9,100 less per capita than the State average, creating significant strains on families, especially under Hawai'i's high cost of living. Increasing income levels of Native Hawaiian families will create the financial stability needed to improve their overall well-being.

THE OFFICE OF HAWAIIAN AFFAIRS  
**LEVERAGES RESOURCES**  
 TO IMPROVE INCOME IN HAWAI'I

INCOME



\* Value added non-cash contributions

Office of Hawaiian Affairs  
 Prioritized List of Functions

Table 1

<u>Priority</u>	<u>Description of Function</u>	<u>Activities</u>	<u>Prog ID(s)</u>	<u>Statutory Reference</u>
1	Social services, educational improvement programs, legal services and legal representation, health improvement programs, housing improvement programs and income improvement programs	Services and assistance to Native Hawaiians	OHA175	HRS10-3(3)
2	Personnel and administrative costs	Services and assistance to Native Hawaiians	OHA150, OHA160 & OHA175	HRS10-3(3)



Office of Hawaiian Affairs  
Department-Wide Totals

Table 2

Fiscal Year 2015				
Act 170/13 Appropriation	Restriction	Emergency Appropriations	Total FY15	MOF
\$ 2,741,574.00			\$ 2,741,574.00	A
\$ 6,180,277.00			\$ 6,180,277.00	T
			\$ -	
\$ 8,921,851.00	\$ -	\$ -	\$ 8,921,851.00	Total
Fiscal Year 2016				
Appropriation	Reductions	Additions	Total FY16	MOF
\$ 3,741,574.00			\$ 3,741,574.00	A
\$ 7,180,274.00			\$ 7,180,274.00	T
			\$ -	
\$ 10,921,848.00	\$ -	\$ -	\$ 10,921,848.00	Total
Fiscal Year 2017				
Appropriation	Reductions	Additions	Total FY17	MOF
\$ 3,741,574.00			\$ 3,741,574.00	A
\$ 7,180,274.00			\$ 7,180,274.00	T
			\$ -	
\$ 10,921,848.00	\$ -	\$ -	\$ 10,921,848.00	Total

Office of Hawaiian Affairs  
Program ID Totals

Table 3

Prog ID	Program Title	MOF	As budgeted by Act 170/13 (FY15)			Governor's Submittal (FY16)				Governor's Submittal (FY17)			
			Pos (P)	Pos (T)	\$\$\$	Pos (P)	Pos (T)	\$\$\$	Percent Change of \$\$\$\$	Pos (P)	Pos (T)	\$\$\$	Percent Change of \$\$\$\$
OHA150	OFFICE OF THE TRUSTEES	A	0.63	-	\$ 28,435	A	0.47	\$ 28,435	0.00%	A	0.47	\$ 28,435	0.00%
OHA150	OFFICE OF THE TRUSTEES	T	4.37	-	\$ 275,687	T	4.53	\$ 275,687	0.00%	T	4.53	\$ 275,687	0.00%
		TOTAL	5.00	-	\$ 304,122	TOTAL	5.00	\$ 304,122		TOTAL	5.00	\$ 304,122	
OHA160	ADMINISTRATION	A	7.60	-	\$ 700,159	A	5.03	\$ 700,159	0.00%	A	5.03	\$ 700,159	0.00%
OHA160	ADMINISTRATION	T	32.40	-	\$ 2,861,727	T	31.97	\$ 2,861,727	0.00%	T	31.97	\$ 2,861,727	0.00%
		TOTAL	40.00	-	\$ 3,561,886	TOTAL	37.00	\$ 3,561,886		TOTAL	37.00	\$ 3,561,886	
OHA175	BENEFICIARY ADVOCACY	A	2.86	-	\$ 2,012,980	A	1.47	\$ 3,012,980	49.68%	A	1.47	\$ 3,012,980	49.68%
OHA175	BENEFICIARY ADVOCACY	T	14.14	-	\$ 3,042,863	T	18.53	\$ 4,042,860	32.86%	T	18.53	\$ 4,042,860	32.86%
		TOTAL	17.00	-	\$ 5,055,843	TOTAL	20.00	\$ 7,055,840		TOTAL	20.00	\$ 7,055,840	
	TOTAL	A	11.09	-	\$ 2,741,574	A	6.97	\$ 3,741,574	36.48%	A	6.97	\$ 3,741,574	36.48%
	TOTAL	T	50.91	-	\$ 6,180,277	T	55.03	\$ 7,180,274	16.18%	T	55.03	\$ 7,180,274	16.18%
	TOTAL	TOTAL	62.00	-	\$ 8,921,851	TOTAL	62.00	\$ 10,921,848	22.42%	TOTAL	62.00	\$ 10,921,848	22.42%

Office of Hawaiian Affairs  
Budget Decisions

Table 4

Prog ID	Sub-Org	Description of Request	MOF	Executive Team Recommendations FY16			Executive Team Recommendations FY17			CEO Approval and Recommendations FY16			CEO Approval and Recommendations FY17			Board of Trustee's Decisions FY16			Board of Trustee's Decisions FY17			
				Pos (P)	Pos (T)	\$\$\$	MOF	Pos (P)	Pos (T)	\$\$\$	Pos (P)	Pos (T)	\$\$\$	Pos (P)	Pos (T)	\$\$\$	Pos (P)	Pos (T)	\$\$\$	Pos (P)	Pos (T)	\$\$\$
OHA150	N/A	OFFICE OF THE TRUSTEES	A	0.47	-	\$ 28,435	A	0.47	-	\$ 28,435	0.47	-	\$ 28,435	0.47	-	\$ 28,435	0.47	-	\$ 28,435	0.47	-	\$ 28,435
OHA150	N/A	OFFICE OF THE TRUSTEES	T	4.53	-	\$ 275,687	T	4.53	-	\$ 275,687	4.53	-	\$ 275,687	4.53	-	\$ 275,687	4.53	-	\$ 275,687	4.53	-	\$ 275,687
			TOTAL	5.00	-	\$ 304,122	TOTAL	5.00	-	\$ 304,122	5.00	-	\$ 304,122	5.00	-	\$ 304,122	5.00	-	\$ 304,122	5.00	-	\$ 304,122
OHA160	N/A	ADMINISTRATION	A	5.03	-	\$ 700,159	A	5.03	-	\$ 700,159	5.03	-	\$ 700,159	5.03	-	\$ 700,159	5.03	-	\$ 700,159	5.03	-	\$ 700,159
OHA160	N/A	ADMINISTRATION	T	31.97	-	\$ 2,861,727	T	31.97	-	\$ 2,861,727	31.97	-	\$ 2,861,727	31.97	-	\$ 2,861,727	31.97	-	\$ 2,861,727	31.97	-	\$ 2,861,727
			TOTAL	37.00	-	\$ 3,561,886	TOTAL	37.00	-	\$ 3,561,886	37.00	-	\$ 3,561,886	37.00	-	\$ 3,561,886	37.00	-	\$ 3,561,886	37.00	-	\$ 3,561,886
OHA175	N/A	BENEFICIARY ADVOCACY	A	1.47	-	\$ 3,012,980	A	1.47	-	\$ 3,012,980	1.47	-	\$ 3,012,980	1.47	-	\$ 3,012,980	1.47	-	\$ 3,012,980	1.47	-	\$ 3,012,980
OHA175	N/A	BENEFICIARY ADVOCACY	T	18.53	-	\$ 4,042,860	T	18.53	-	\$ 4,042,860	18.53	-	\$ 4,042,860	18.53	-	\$ 4,042,860	18.53	-	\$ 4,042,860	18.53	-	\$ 4,042,860
			TOTAL	20.00	-	\$ 7,055,840	TOTAL	20.00	-	\$ 7,055,840	20.00	-	\$ 7,055,840	20.00	-	\$ 7,055,840	20.00	-	\$ 7,055,840	20.00	-	\$ 7,055,840
			A	6.97	-	\$ 3,741,574	A	6.97	-	\$ 3,741,574	6.97	-	\$ 3,741,574	6.97	-	\$ 3,741,574	6.97	-	\$ 3,741,574	6.97	-	\$ 3,741,574
			T	55.03	-	\$ 7,180,274	T	55.03	-	\$ 7,180,274	55.03	-	\$ 7,180,274	55.03	-	\$ 7,180,274	55.03	-	\$ 7,180,274	55.03	-	\$ 7,180,274
			TOTAL	62.00	-	\$ 10,921,848	TOTAL	62.00	-	\$ 10,921,848	62.00	-	\$ 10,921,848	62.00	-	\$ 10,921,848	62.00	-	\$ 10,921,848	62.00	-	\$ 10,921,848

Office of Hawaiian Affairs  
Proposed Budget Reductions

Table 5

Prog ID	Sub-Org	Description of Reduction	Impact of Reduction	MOF	FY16			FY17			FY15 Restriction (Y/N)
					Pos (P)	Pos (T)	\$\$\$	Pos (P)	Pos (T)	\$\$\$	
OHA175	N/A	Personnel Cost	No Significant Impact	T	-	-	\$ (3)	-	-	\$ (3)	N
OHA175	N/A	Educational Improvement Program	No Significant Impact	A	-	-	\$ (570)	-	-	\$ (570)	N
OHA175	N/A	Educational Improvement Program	No Significant Impact	T	-	-	\$ (570)	-	-	\$ (570)	N
OHA175	N/A	Native Hawaiian Language Content on Cable TV	Impact Not Determined At This Time	A	-	-	\$ (250,000)	-	-	\$ (250,000)	N
OHA175	N/A	Native Hawaiian Language Content on Cable TV	Impact Not Determined At This Time	T	-	-	\$ (250,000)	-	-	\$ (250,000)	N

Office of Hawaiian Affairs  
Proposed Budget Additions

Table 6

Prog ID	Sub-Org	Addition Type	Prog ID Priority	Dept-Wide Priority	Description of Addition	Justification	MOF	FY16			FY17		
								Pos (P)	Pos (T)	\$\$\$	Pos (P)	Pos (T)	\$\$\$
OHA175	N/A	AR	1	1	Grant	Increase will be used for grants related to Health Programs	A	-	-	\$ 340,570.00	-	-	\$ 340,570
OHA175	N/A	AR	1	1	Grant	Increase will be used for grants related to Housing Programs	A	-	-	\$ 455,000.00	-	-	\$ 455,000
OHA175	N/A	AR	1	1	Grant	Increase will be used for grants related to Income Programs	A	-	-	\$ 455,000.00	-	-	\$ 455,000
OHA175	N/A	AR	1	1	Grant	Increase will be used for grants related to Health Programs	T	-	-	\$ 340,570.00	-	-	\$ 340,570
OHA175	N/A	AR	1	1	Grant	Increase will be used for grants related to Housing Programs	T	-	-	\$ 455,000.00	-	-	\$ 455,000
OHA175	N/A	AR	1	1	Grant	Increase will be used for grants related to Income Programs	T	-	-	\$ 455,000.00	-	-	\$ 455,000



Office of Hawaiian Affairs  
 FY15 Restrictions

Table 7

<u>Prog ID</u>	<u>Sub-Org</u>	<u>MOF</u>	<u>Budgeted by Dept</u>	<u>Restriction</u>	<u>Difference Between Budgeted &amp; Restricted</u>	<u>Percent Difference</u>	<u>Impact</u>
NONE							

Office of Hawaiian Affairs  
Emergency Appropriation Requests

Table 8

<u>Prog ID</u>	<u>Description of Request</u>	<u>Explanation of Request</u>	<u>MOE</u>	<u>Pos (P)</u>	<u>Pos (T)</u>	<u>\$\$\$</u>
NONE						

Office of Hawaiian Affairs  
Expenditures Exceeding Appropriation Ceilings in FY14 and FY15

Table 9

<u>Prog ID</u>	<u>MOF</u>	<u>Date</u>	<u>Appropriation</u>	<u>Amount Exceeding Appropriation</u>	<u>Percent Exceeded</u>	<u>Reason for Exceeding Ceiling</u>	<u>Legal Authority</u>	<u>Recurring (Y/N)</u>	<u>GF Impact (Y/N)</u>
NONE									

Office of Hawaiian Affairs  
Intradepartmental Transfers in FY14 and FY15

Table 10

<u>Actual or Anticipated Date of Transfer</u>	<u>MOF</u>	<u>Pos (P)</u>	<u>Pos (T)</u>	<u>\$\$\$</u>	<u>From Prog ID</u>	<u>Percent of Program ID Appropriation Transferred From</u>	<u>To Prog ID</u>	<u>Percent of Receiving Program ID Appropriation</u>	<u>Reason for Transfer</u>	<u>Recurring (Y/N)</u>
6/30/2014	A	-	-	\$ 683	OHA150	2.40%	OHA160	0.17%	REALLOCATION TO FULLY UTILIZE AVAILABLE PERSONNEL FUNDING	N
6/30/2014	A	-	-	\$ 4,035	OHA175	4.56%	OHA160	1.00%	REALLOCATION TO FULLY UTILIZE AVAILABLE PERSONNEL FUNDING	N
6/30/2014	T	-	-	\$ 1,199	OHA160	0.05%	OHA150	0.44%	REALLOCATION TO FULLY UTILIZE AVAILABLE PERSONNEL FUNDING	N
6/30/2014	T	-	-	\$ 11,323	OHA160	0.44%	OHA175	1.01%	REALLOCATION TO FULLY UTILIZE AVAILABLE PERSONNEL FUNDING	N



Office of Hawaiian Affairs  
 Non-General Funds

Table 12

<u>Name of Fund</u>	<u>Purpose</u>	<u>Statutory Reference</u>	<u>MOF</u>	<u>Beginning FY15 Unencumbered Cash Balance</u>	<u>Estimated FY15 Revenues</u>	<u>Estimated FY15 Expenditures and Encumbrances</u>	<u>Estimated FY15 Net Transfers</u>	<u>Estimated FY15 Ending Unencumbered Cash Balance</u>	<u>Balance in Excess of Program Needs</u>
OHA MATCHING TRUST FUNDS (FY15)	Additional Funds for OHA 150, OHA 160 and OHA 175	HRS10-3(3)	T	\$ 6,180,277	\$ -	\$ 6,180,277	\$ -	\$ -	\$ -

Office of Hawaiian Affairs  
 Vacancy Report as of November 30, 2014

Table 13

<u>Prog ID</u>	<u>Sub-Org</u>	<u>Date of Vacancy</u>	<u>Expected Fill Date</u>	<u>Position Number</u>	<u>Position Title</u>	<u>Exempt (Y/N)</u>	<u>SR Level</u>	<u>BU Code</u>	<u>Perm Temp (P/T)</u>	<u>FTE</u>	<u>MOF</u>	<u>Budgeted Amount</u>	<u>Actual Salary Last Paid</u>	<u>Authority to Hire (Y/N)</u>	<u>Occupied by 89 Day Hire (Y/N)</u>	<u># of 89 Hire Appts</u>	<u>Describe if Filled by other Means</u>	<u>Priority # to Retain</u>
OHA160	-	1/5/2012	TBD	16212	Counsel for Employment Practi	Y	SR28	00	P	1.00	A&T	\$ 77,232	\$ 76,080	Y	N	N/A	N/A	1
OHA175	-	8/30/2014	TBD	16423	Community Outreach Coordina	N	SR10	00	P	1.00	A&T	\$ 35,316	\$ 35,316	Y	Y	1	N/A	1
OHA160	-	11/1/2014	TBD	16314	Purchasing/Procurement Speci	N	SR22	00	P	1.00	A&T	\$ 53,964	\$ 53,964	Y	N	N/A	N/A	1
OHA175	-	12/1/2014	TBD	17606	Administrative Assistant	N	SR16	00	P	1.00	A&T	\$ 46,380	\$ 46,380	Y	N	N/A	N/A	1

Office of Hawaiian Affairs  
Personnel Separations from July 1, 2013 to November 30, 2014

Table 14

<u>Prog ID</u>	<u>Sub-Org</u>	<u>Separation Date</u>	<u>Position Number</u>	<u>Position Title</u>	<u>Exempt (Y/N)</u>	<u>SR Level</u>	<u>BU Code</u>	<u>T/P</u>	<u>MOF</u>	<u>Budgeted FTE</u>	<u>Budgeted Salary</u>	<u>Actual FTE</u>	<u>Actual Salary</u>
OHA160	-	7/16/2013	16217	Human Resources Manager	Y	SR30	00	P	A&T	1.00	\$ 87,300	1.00	\$ 87,300
OHA175	-	9/5/2013	17601	Chief Advocate	Y	EM08	00	P	A&T	1.00	\$ 123,636	1.00	\$ 123,636
OHA160	-	9/30/2013	16207	Chief Operating Officer	Y	EM08	00	P	A&T	1.00	\$ 126,888	1.00	\$ 126,888
OHA160	-	1/2/2014	16306	Accountant V	N	SR24	00	P	A&T	1.00	\$ 55,836	1.00	\$ 59,004
OHA160	-	2/25/2014	16317	Land and Property Manager	Y	SR30	00	P	A&T	1.00	\$ 93,084	1.00	\$ 85,008
OHA160	-	2/28/2014	16324	Economic Development Analy	N	SR22	00	P	A&T	1.00	\$ 55,836	1.00	\$ 55,836
OHA150	-	3/31/2014	15121	Trustee Secretary	N	SR16	00	P	A&T	1.00	\$ 42,336	1.00	\$ 42,336
OHA175	-	8/29/2014	16423	Community Outreach Coordin	N	SR10	00	P	A&T	1.00	\$ 35,316	1.00	\$ 35,316
OHA160	-	10/31/2014	16314	Purchasing/Procurement Spec	N	SR22	00	P	A&T	1.00	\$ 53,964	1.00	\$ 53,964



Office of Hawaiian Affairs  
Positions Filled from July 1, 2013 to November 30, 2014

Table 15

<u>Prog ID</u>	<u>Sub-Org</u>	<u>Effective Date Position Filled</u>	<u>Position Number</u>	<u>Position Title</u>	<u>Exempt (Y/N)</u>	<u>SR Level</u>	<u>BU Code</u>	<u>T/P</u>	<u>MOF</u>	<u>Budgeted FTE</u>	<u>Budgeted Salary</u>	<u>Actual FTE</u>	<u>Actual Salary</u>	<u>Occupied by 89 Day Hire (Y/N)</u>
OHA175	-	7/19/2013	17606	Administrative Assistant	N	SR16	00	P	A&T	1.00	\$ 46,380	1.00	\$ 46,380	N
OHA175	-	8/19/2013	17619	Lead Compliance Special	Y	SR28	00	P	A&T	1.00	\$ 72,132	1.00	\$ 72,132	N
OHA160	-	10/7/2013	16217	Human Resources Manager	Y	SR30	00	P	A&T	1.00	\$ 87,300	1.00	\$ 87,300	N
OHA175	-	10/22/2013	16424	Community Outreach Coordinator	N	SR10	00	P	A&T	1.00	\$ 33,960	1.00	\$ 33,960	N
OHA175	-	10/22/2013	17601	Chief Advocate	Y	EM08	00	P	A&T	1.00	\$ 123,636	1.00	\$ 123,636	N
OHA160	-	10/31/2013	16207	Chief Operating Officer	Y	EM08	00	P	A&T	1.00	\$ 126,888	1.00	\$ 126,888	N
OHA160	-	4/1/2014	16306	Accountant V	N	SR24	00	P	A&T	1.00	\$ 55,836	1.00	\$ 59,004	N
OHA160	-	6/16/2014	16317	Land and Property Manager	Y	SR30	00	P	A&T	1.00	\$ 93,084	1.00	\$ 85,008	N
OHA150	-	7/7/2014	15121	Trustee Secretary	N	SR16	00	P	A&T	1.00	\$ 42,336	1.00	\$ 42,336	N
OHA160	-	7/16/2014	16330	ISRM Manager	Y	SR28	00	P	A&T	1.00	\$ 82,344	1.00	\$ 82,344	N
OHA160	-	10/20/2014	16351	Land and Property Director	Y	EM08	00	P	A&T	1.00	\$ 121,800	1.00	\$ 120,000	N

Office of Hawaiian Affairs  
 Unauthorized Positions as of November 30, 2014

Table 16

<u>Prog ID</u>	<u>Sub-Org</u>	<u>Date Established</u>	<u>Legal Authority</u>	<u>Position Number</u>	<u>Position Title</u>	<u>Exempt (Y/N)</u>	<u>SR Level</u>	<u>BU Code</u>	<u>T/P</u>	<u>MOF</u>	<u>FTE</u>	<u>Annual Salary</u>	<u>Filled (Y/N)</u>	<u>Occupied by 89 Day Hire (Y/N)</u>
-	-	-	-	-	-	-	-	-	-	-	-	-	-	-
(OHA - None to report)														

Office of Hawaiian Affairs  
Overtime Expenditure Summary

Table 17

Prog ID	Sub-Org	Program Title	MOF	FY14 (actual)			FY15 (estimated)			FY16 (budgeted)			FY17 (budgeted)		
				<u>Base Salary</u> \$\$\$\$	<u>Overtime</u> \$\$\$\$	<u>Overtime</u> Percent	<u>Base Salary</u> \$\$\$\$	<u>Overtime</u> \$\$\$\$	<u>Overtime</u> Percent	<u>Base Salary</u> \$\$\$\$	<u>Overtime</u> \$\$\$\$	<u>Overtime</u> Percent	<u>Base Salary</u> \$\$\$\$	<u>Overtime</u> \$\$\$\$	<u>Overtime</u> Percent
OHA160	-	Information Technology Speciali	A&T	\$ 38,580	556.50										

Office of Hawaiian Affairs  
Overtime Position List

Table 18

(Only for Positions the Sum of Overtime Paid and Value of Compensatory Time for which was at Least 10% of Base Pay)

Prog ID	Position No.	Bargaining Unit	Included in CB (Y/N)	Exempt (Y/N)	Temp or Perm (T/P)	MOF	Position Title	Salary Range Level	Base Annual Pay	Hours Exceeding Standard	FY 14								
											OT		Comp Time		Total OT/Comp				
												\$ Amount Paid	% of Base	Hours Earned	\$ Value of Hours Earned	% \$ Value of Base Salary	\$ Amount OT Paid + \$ Value Comp Hours Earned	% of Base	
(OHA - None to report)													#DIV/0!			#DIV/0!	-	#DIV/0!	
													#DIV/0!			#DIV/0!	-	#DIV/0!	
													#DIV/0!			#DIV/0!	-	#DIV/0!	
													#DIV/0!			#DIV/0!	-	#DIV/0!	
													#DIV/0!			#DIV/0!	-	#DIV/0!	
													#DIV/0!			#DIV/0!	-	#DIV/0!	
													#DIV/0!			#DIV/0!	-	#DIV/0!	
													#DIV/0!			#DIV/0!	-	#DIV/0!	
													#DIV/0!			#DIV/0!	-	#DIV/0!	
													#DIV/0!			#DIV/0!	-	#DIV/0!	
													#DIV/0!			#DIV/0!	-	#DIV/0!	
													#DIV/0!			#DIV/0!	-	#DIV/0!	
													#DIV/0!			#DIV/0!	-	#DIV/0!	
													#DIV/0!			#DIV/0!	-	#DIV/0!	
													#DIV/0!			#DIV/0!	-	#DIV/0!	
													#DIV/0!			#DIV/0!	-	#DIV/0!	
													#DIV/0!			#DIV/0!	-	#DIV/0!	
													#DIV/0!			#DIV/0!	-	#DIV/0!	
													#DIV/0!			#DIV/0!	-	#DIV/0!	
													#DIV/0!			#DIV/0!	-	#DIV/0!	
GRAND TOTAL									-	-			-	#DIV/0!	-	-	#DIV/0!	-	#DIV/0!
Totals by MOF						A			-	-			-	#DIV/0!	-	-	#DIV/0!	-	#DIV/0!
						B			-	-			-	#DIV/0!	-	-	#DIV/0!	-	#DIV/0!
						C			-	-			-	#DIV/0!	-	-	#DIV/0!	-	#DIV/0!
						N			-	-			-	#DIV/0!	-	-	#DIV/0!	-	#DIV/0!
						P			-	-			-	#DIV/0!	-	-	#DIV/0!	-	#DIV/0!
						R			-	-			-	#DIV/0!	-	-	#DIV/0!	-	#DIV/0!
						T			-	-			-	#DIV/0!	-	-	#DIV/0!	-	#DIV/0!
						U			-	-			-	#DIV/0!	-	-	#DIV/0!	-	#DIV/0!
						W			-	-			-	#DIV/0!	-	-	#DIV/0!	-	#DIV/0!
						X			-	-			-	#DIV/0!	-	-	#DIV/0!	-	#DIV/0!

Office of Hawaiian Affairs  
Overpayments as of November 30, 2014

Table 19

<u>Name of Employee</u>	<u>Date of Over-payment</u>	<u>Gross Amount Overpaid</u>	<u>Amount Recovered</u>	<u>Balance</u>	<u>Category</u>				<u>Reason for Overpayment</u>	<u>Referred to Attorney General</u>
					<u>Employed Occurred &gt; 2 Years</u>	<u>Employed Occurred &lt; 2 Years</u>	<u>Not Employed Occurred &gt; 2 Years</u>	<u>Not Employed Occurred &lt; 2 Years</u>		
-	-	-	-	-	-	-	-	-	-	-
(OHA - None to report)										

Prog ID	MOF	Frequency		Max Value	Outstanding Balance	Term of Contract			Organization	Category E/L/P/C/ G/S	Description	Explanation of How Contract is Monitored	POS Y/N
		Amount	_(M/A/Q)			Date Executed	From	To					
OHA 175	A	\$ 760,014	OTHER - 10% INITIAL PAYMENT, THEREAFTER COST REIMBURSEMENT	\$ 830,000.00	\$ 69,986	8/2/2013	7/1/2013	6/30/2015	HELPING HANDS HAWAII	S	STATE PROVISO - SOCIAL SERVICES	Periodic reporting pursuant to contract terms monitored by OHA personnel	N
OHA 175	T	\$ 760,014	OTHER - 10% INITIAL PAYMENT, THEREAFTER COST REIMBURSEMENT	\$ 830,000.00	\$ 69,986	8/2/2013	7/1/2013	6/30/2015	HELPING HANDS HAWAII	S	STATE PROVISO - SOCIAL SERVICES	Periodic reporting pursuant to contract terms monitored by OHA personnel	N
OHA 175	A	\$ 36,247	OTHER - 10% INITIAL PAYMENT, THEREAFTER COST REIMBURSEMENT	\$ 75,000.00	\$ 38,753	6/26/2013	7/1/2013	6/30/2015	AFTER-SCHOOL ALL-STARS HAWAII	S	STATE PROVISO - EDUCATION	Periodic reporting pursuant to contract terms monitored by OHA personnel	N
OHA 175	T	\$ 36,247	OTHER - 10% INITIAL PAYMENT, THEREAFTER COST REIMBURSEMENT	\$ 75,000.00	\$ 38,753	6/26/2013	7/1/2013	6/30/2015	AFTER-SCHOOL ALL-STARS HAWAII	S	STATE PROVISO - EDUCATION	Periodic reporting pursuant to contract terms monitored by OHA personnel	N
OHA 175	A	\$ 46,234	OTHER - 10% INITIAL PAYMENT, THEREAFTER COST REIMBURSEMENT	\$ 100,000.00	\$ 53,766	6/26/2013	7/1/2013	6/30/2015	BOYS AND GIRLS CLUB OF MAUI	S	STATE PROVISO - EDUCATION	Periodic reporting pursuant to contract terms monitored by OHA personnel	N
OHA 175	T	\$ 46,234	OTHER - 10% INITIAL PAYMENT, THEREAFTER COST REIMBURSEMENT	\$ 100,000.00	\$ 53,766	6/26/2013	7/1/2013	6/30/2015	BOYS AND GIRLS CLUB OF MAUI	S	STATE PROVISO - EDUCATION	Periodic reporting pursuant to contract terms monitored by OHA personnel	N
OHA 175	A	\$ 178,278	OTHER - 10% INITIAL PAYMENT, THEREAFTER COST REIMBURSEMENT	\$ 250,000.00	\$ 71,722	6/28/2013	7/1/2013	6/30/2015	GOODWILL INDUSTRIES OF HAWAII, INC	S	STATE PROVISO - EDUCATION	Periodic reporting pursuant to contract terms monitored by OHA personnel	N
OHA 175	T	\$ 178,278	OTHER - 10% INITIAL PAYMENT, THEREAFTER COST REIMBURSEMENT	\$ 250,000.00	\$ 71,722	6/28/2013	7/1/2013	6/30/2015	GOODWILL INDUSTRIES OF HAWAII, INC	S	STATE PROVISO - EDUCATION	Periodic reporting pursuant to contract terms monitored by OHA personnel	N
OHA 175	A	\$ 786,600	QUARTERLY	\$ 1,048,800.00	\$ 262,200	7/3/2013	7/1/2013	6/30/2015	NATIVE HAWAIIAN LEGAL CORPORATION	S	STATE PROVISO - LEGAL SERVICES	Periodic reporting pursuant to contract terms monitored by OHA personnel	N
OHA 175	T	\$ 786,600	QUARTERLY	\$ 1,048,800.00	\$ 262,200	7/3/2013	7/1/2013	6/30/2015	NATIVE HAWAIIAN LEGAL CORPORATION	S	STATE PROVISO - LEGAL SERVICES	Periodic reporting pursuant to contract terms monitored by OHA personnel	N
OHA 175	A	\$ 78,095	OTHER - 10% INITIAL PAYMENT, THEREAFTER COST REIMBURSEMENT	\$ 78,095	\$ -	6/28/2013	7/1/2013	6/30/2015	KOKUA KALIH VALLEY	S	STATE PROVISO - HEALTH IMPROVEMEN	Periodic reporting pursuant to contract terms monitored by OHA personnel	N
OHA 175	T	\$ 78,095	OTHER - 10% INITIAL PAYMENT, THEREAFTER COST REIMBURSEMENT	\$ 78,095	\$ -	6/28/2013	7/1/2013	6/30/2015	KOKUA KALIH VALLEY	S	STATE PROVISO - HEALTH IMPROVEMEN	Periodic reporting pursuant to contract terms monitored by OHA personnel	N
OHA 175	A	\$ 177,511	OTHER - 10% INITIAL PAYMENT, THEREAFTER COST REIMBURSEMENT	\$ 250,000	\$ 72,489	6/26/2013	7/1/2013	6/30/2015	I OLA LAHUI	S	STATE PROVISO - HEALTH IMPROVEMEN	Periodic reporting pursuant to contract terms monitored by OHA personnel	N
OHA 175	T	\$ 177,511	OTHER - 10% INITIAL PAYMENT, THEREAFTER COST REIMBURSEMENT	\$ 250,000	\$ 72,489	6/26/2013	7/1/2013	6/30/2015	I OLA LAHUI	S	STATE PROVISO - HEALTH IMPROVEMEN	Periodic reporting pursuant to contract terms monitored by OHA personnel	N
OHA 175	A	\$ 326,326	OTHER - 10% INITIAL PAYMENT, THEREAFTER COST REIMBURSEMENT	\$ 443,177	\$ 116,852	7/10/2013	7/1/2013	6/30/2015	QUEEN'S MEDICAL CENTER, THE	S	STATE PROVISO - HEALTH IMPROVEMEN	Periodic reporting pursuant to contract terms monitored by OHA personnel	N
OHA 175	T	\$ 326,326	OTHER - 10% INITIAL PAYMENT, THEREAFTER COST REIMBURSEMENT	\$ 443,177	\$ 116,852	7/10/2013	7/1/2013	6/30/2015	QUEEN'S MEDICAL CENTER, THE	S	STATE PROVISO - HEALTH IMPROVEMEN	Periodic reporting pursuant to contract terms monitored by OHA personnel	N
OHA 175	A	\$ 61,411	OTHER - 10% INITIAL PAYMENT, THEREAFTER COST REIMBURSEMENT	\$ 61,411	\$ -	7/10/2013	7/1/2013	6/30/2015	SALVATION ARMY FAMILY	S	STATE PROVISO - HEALTH IMPROVEMEN	Periodic reporting pursuant to contract terms monitored by OHA personnel	N
OHA 175	T	\$ 61,411	OTHER - 10% INITIAL PAYMENT, THEREAFTER COST REIMBURSEMENT	\$ 61,411	\$ -	7/10/2013	7/1/2013	6/30/2015	SALVATION ARMY FAMILY	S	STATE PROVISO - HEALTH IMPROVEMEN	Periodic reporting pursuant to contract terms monitored by OHA personnel	N
OHA 175	A	\$ 50,000	OTHER - 10% INITIAL PAYMENT, THEREAFTER COST REIMBURSEMENT	\$ 50,000	\$ -	7/12/2013	7/1/2013	6/30/2015	WAIMANALO HEALTH CENTER	S	STATE PROVISO - HEALTH IMPROVEMEN	Periodic reporting pursuant to contract terms monitored by OHA personnel	N
OHA 175	T	\$ 50,000	OTHER - 10% INITIAL PAYMENT, THEREAFTER COST REIMBURSEMENT	\$ 50,000	\$ -	7/12/2013	7/1/2013	6/30/2015	WAIMANALO HEALTH CENTER	S	STATE PROVISO - HEALTH IMPROVEMEN	Periodic reporting pursuant to contract terms monitored by OHA personnel	N
OHA 175	A	\$ 28,210	OTHER - 10% INITIAL PAYMENT, THEREAFTER COST REIMBURSEMENT	\$ 66,616	\$ 38,406	7/23/2013	7/1/2013	6/30/2015	MOLOKAI GENERAL HOSPITAL	S	STATE PROVISO - PRENATAL PROGRAM	Periodic reporting pursuant to contract terms monitored by OHA personnel	N
OHA 175	T	\$ 28,210	OTHER - 10% INITIAL PAYMENT, THEREAFTER COST REIMBURSEMENT	\$ 66,616	\$ 38,406	7/23/2013	7/1/2013	6/30/2015	MOLOKAI GENERAL HOSPITAL	S	STATE PROVISO - PRENATAL PROGRAM	Periodic reporting pursuant to contract terms monitored by OHA personnel	N
OHA 175	A	\$ 33,346	OTHER - 10% INITIAL PAYMENT, THEREAFTER COST REIMBURSEMENT	\$ 103,384	\$ 70,038	8/28/2013	7/1/2013	6/30/2015	NORTH HAWAII COMMUNITY HOSPITAL, INC.	S	STATE PROVISO - PRENATAL PROGRAM	Periodic reporting pursuant to contract terms monitored by OHA personnel	N
OHA 175	T	\$ 33,346	OTHER - 10% INITIAL PAYMENT, THEREAFTER COST REIMBURSEMENT	\$ 103,384	\$ 70,038	8/28/2013	7/1/2013	6/30/2015	NORTH HAWAII COMMUNITY HOSPITAL, INC.	S	STATE PROVISO - PRENATAL PROGRAM	Periodic reporting pursuant to contract terms monitored by OHA personnel	N
OHA 175	A	\$ 337,500	OTHER - SEMIANNUAL BASIS	\$ 500,000	\$ 162,500	9/20/2013	9/16/2013	6/30/2015	OIWI TV	S	STATE PROVISO - HAWAIIAN LANGUAGE	Periodic reporting pursuant to contract terms monitored by OHA personnel	N
OHA 175	T	\$ 337,500	OTHER - SEMIANNUAL BASIS	\$ 500,000	\$ 162,500	9/20/2013	9/16/2013	6/30/2015	OIWI TV	S	STATE PROVISO - HAWAIIAN LANGUAGE	Periodic reporting pursuant to contract terms monitored by OHA personnel	N

Act/ Year	ProgID	Seq No.	Description	Comments	FY15 Appropriation			Amount used as of November 30			Comments	
					MOF	Temp Pos.	Perm. Pos.	Amount	Temp Pos.	Perm. Pos.		Amount
Act170/13	OHA175	2090001	LEGISLATIVE ADJUSTMENT: ADD FUNDS FOR NATIVE HAWAIIAN LANGUAGE CONTENT ON CABLE TV		A	-	-	250,000	-	-	87,500	ALL FUNDS WILL BE USED OR ENCUMBERED BY 06/30/2015
Act170/13	OHA175	2090001	LEGISLATIVE ADJUSTMENT: ADD FUNDS FOR NATIVE HAWAIIAN LANGUAGE CONTENT ON CABLE TV		T	-	-	250,000	-	-	87,500	ALL FUNDS WILL BE USED OR ENCUMBERED BY 06/30/2015
Act170/13	OHA175		OHA REQUEST: ADD FUNDS FOR 17 PERMANENT POSITIONS		A	-	17.00	1,272	-	17.00	1,272	
Act170/13	OHA175		OHA REQUEST: ADD FUNDS FOR HEALTH PROGRAMS		A	-	-	119,430	-	-	-	ALL FUNDS WILL BE USED OR ENCUMBERED BY 06/30/2015
Act170/13	OHA175		OHA REQUEST: ADD FUNDS FOR HEALTH PROGRAMS		T	-	-	119,430	-	-	-	ALL FUNDS WILL BE USED OR ENCUMBERED BY 06/30/2015
Act170/13	OHA175		OHA REQUEST: ADD FUNDS FOR SOCIAL SERVICES		A	-	-	15,000	-	-	-	ALL FUNDS WILL BE USED OR ENCUMBERED BY 06/30/2015
Act170/13	OHA175		OHA REQUEST: ADD FUNDS FOR SOCIAL SERVICES		T	-	-	15,000	-	-	-	ALL FUNDS WILL BE USED OR ENCUMBERED BY 06/30/2015
<b>SUBTOTAL: ADD FUNDS FOR HEALTH AND SOCIAL SERVICES</b>								<b>268,860</b>				

Office of Hawaiian Affairs  
Capital Improvements Program (CIP) Requests

<u>Prog ID</u>	<u>Prog ID</u> <u>Priority</u>	<u>Dept- Wide</u> <u>Priority</u>	<u>Senate</u> <u>District</u>	<u>Rep.</u> <u>District</u>	<u>Project Title</u>	<u>MOF</u>	<u>FY16 \$\$\$</u>	<u>FY17 \$\$\$</u>
NONE								



Office of Hawaiian Affairs  
CIP Lapses

Table 23

<u>Prog ID</u>	<u>Act/Year of Appropriation</u>	<u>Project Title</u>	<u>MOF</u>	<u>Amount \$\$\$\$</u>	<u>Reason</u>
NONE					

Office of Hawaiian Affairs  
 Division Resources

Table 24

<u>Division</u>	<u>Associated Program IDs</u>						
BOARD OF TRUSTEES	OHA150						
ADMINISTRATION	OHA160						
BENEFICIARY ADVOCACY	OHA175						

Office of Hawaiian Affairs  
Program ID Sub-Organizations

Table 25

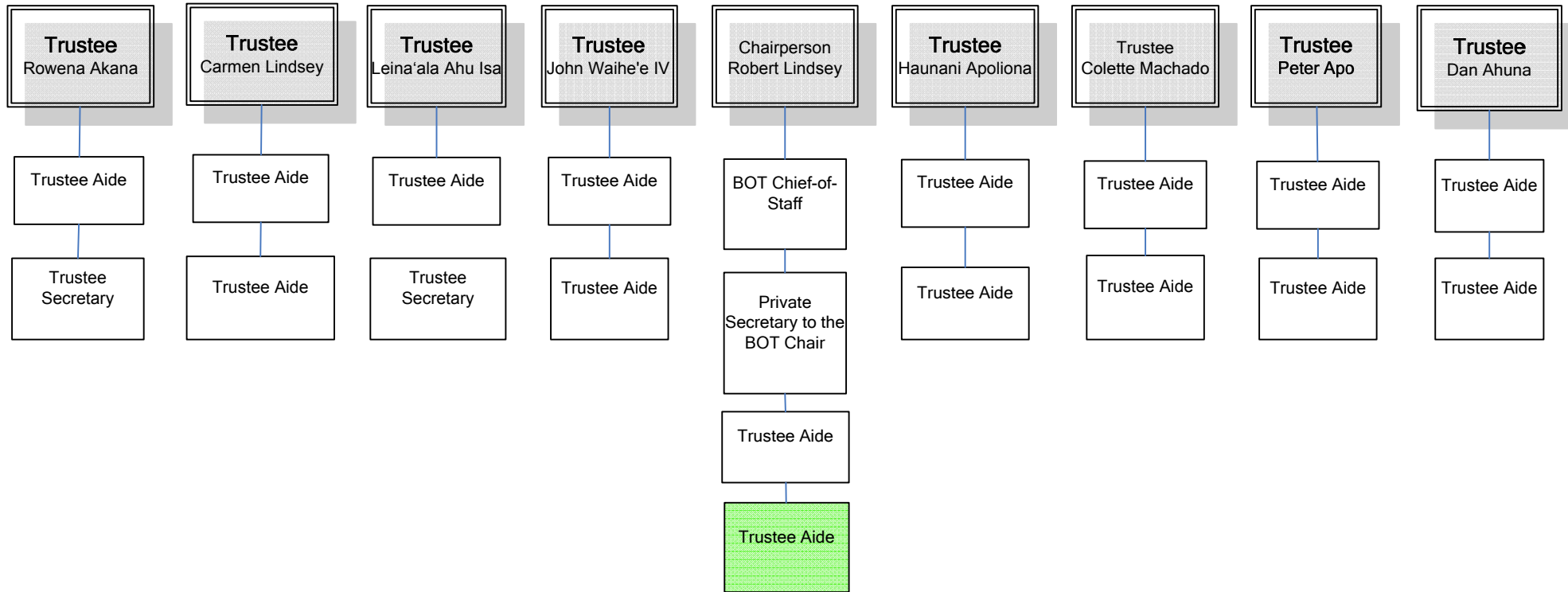
<u>Program ID</u>	<u>Sub-Org Code</u>	<u>Name</u>	<u>Objective</u>
N/A			

Office of Hawaiian Affairs  
 Organization Changes

Table 26

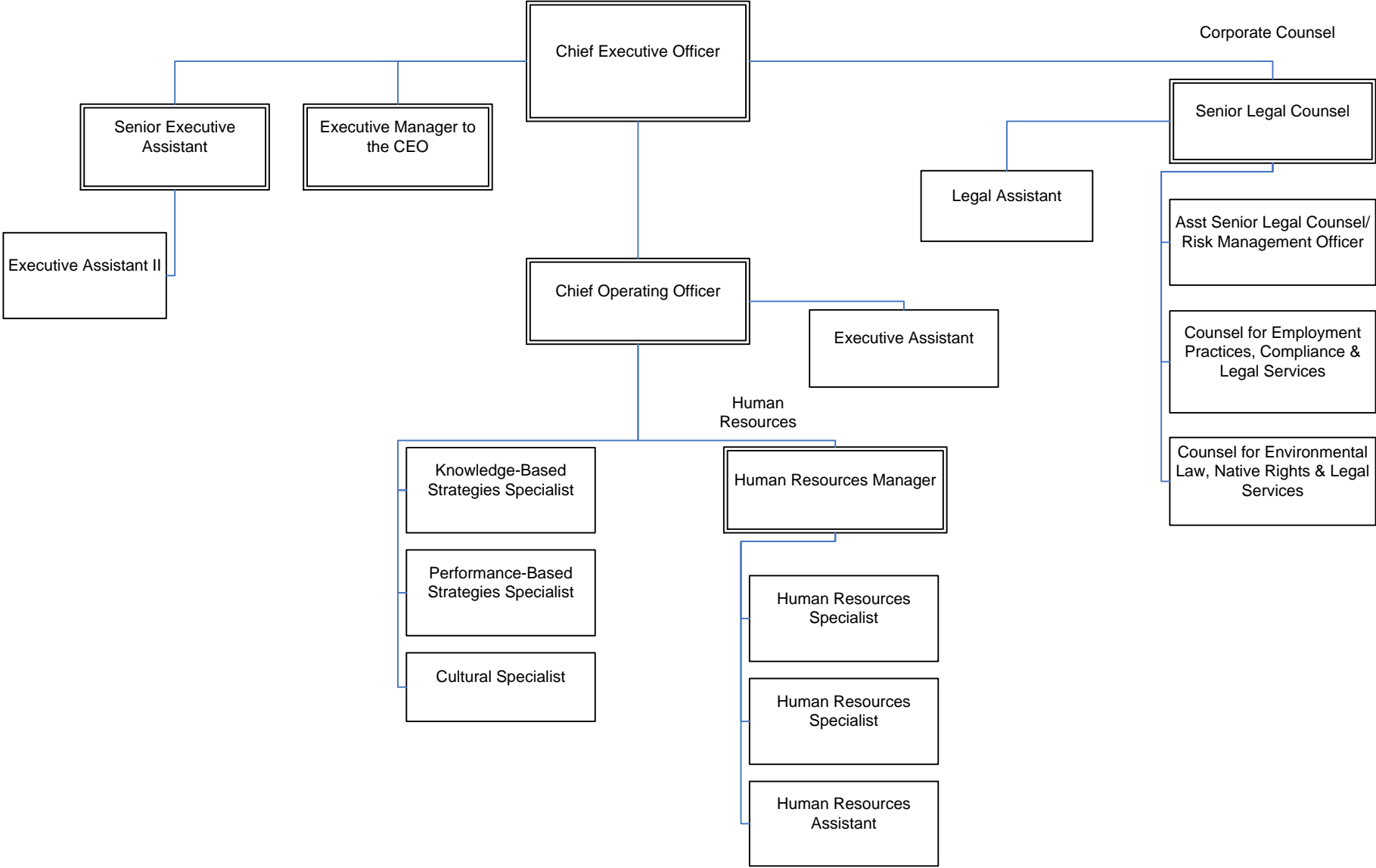
<u>Year of Change</u> FY15/FY16	<u>Page</u> Number	<u>Description of Change</u>
		See Organizational Charts attached
FY 15	1	Re-described position
FY 15	3	Split of Resource Management Line of Business into RM - Financial Assets and RM - Land Assets Reallocation of OHA's Information Coordinator to RM - Financial Assets and re-described to Infor. Specialist
FY 15	4	Split of Resource Management Line of Business into RM - Financial Assets and RM - Land Assets Reallocation of OHA's Economic Development Analyst to Land and Property Director Add BOT-approved position: Executive Assistant to OHA's Land and Property Director Reallocation of OHA's Commercial Property Program (2 positions) to RM - Land Assets
FY 14/FY 15	7	Add BOT-approved positions for OHA's Governance Program (3 positions) Reallocation of OHA's Genealogy Research Coordinator to the Governance Program Reallocation of OHA's Hawaiian Registry Program to the Governance Program

# BOARD OF TRUSTEES



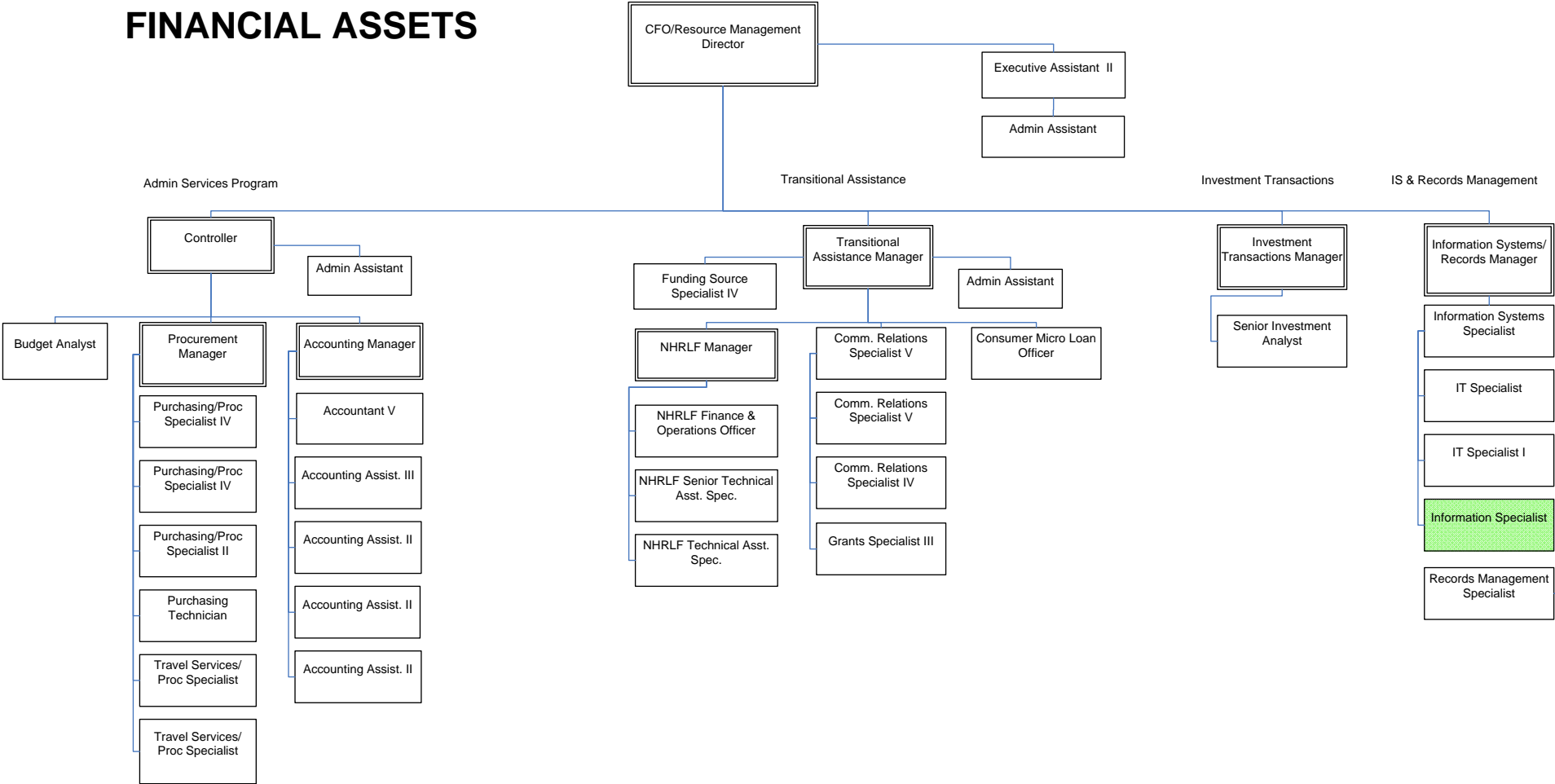
CONFIDENTIAL

# EXECUTIVE OFFICE



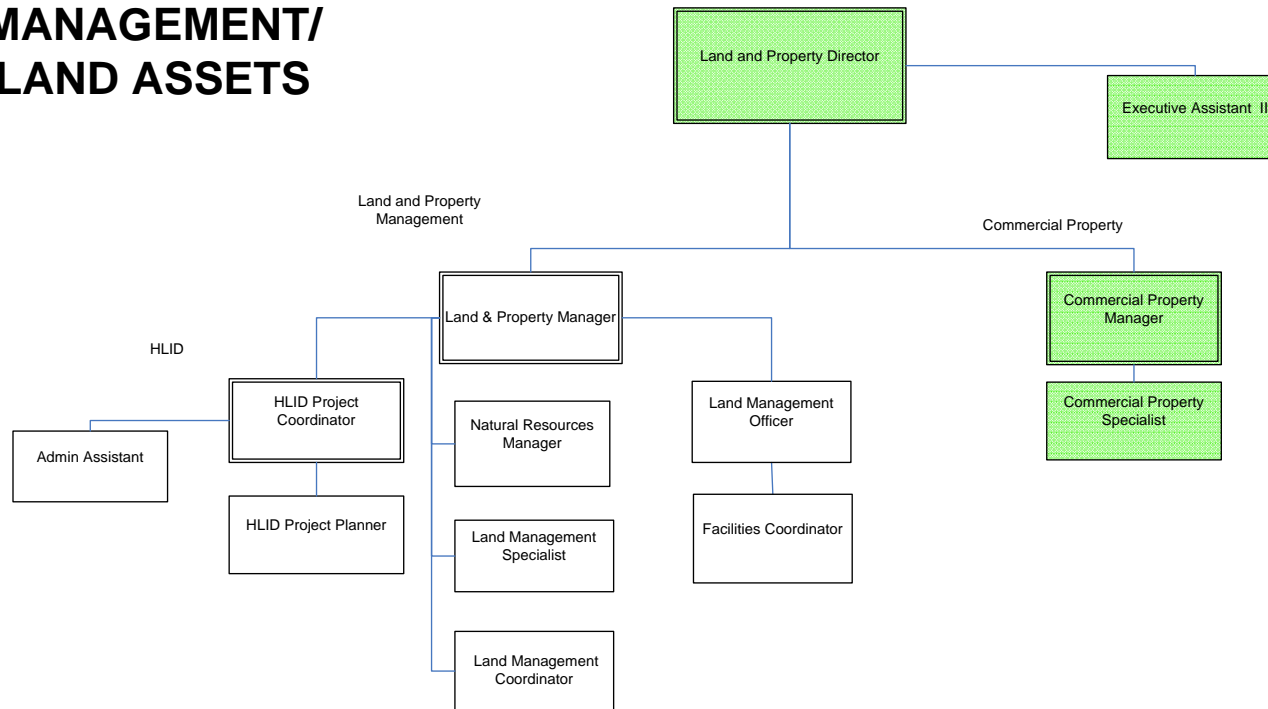
CONFIDENTIAL

# RESOURCE MANAGEMENT/ FINANCIAL ASSETS



CONFIDENTIAL

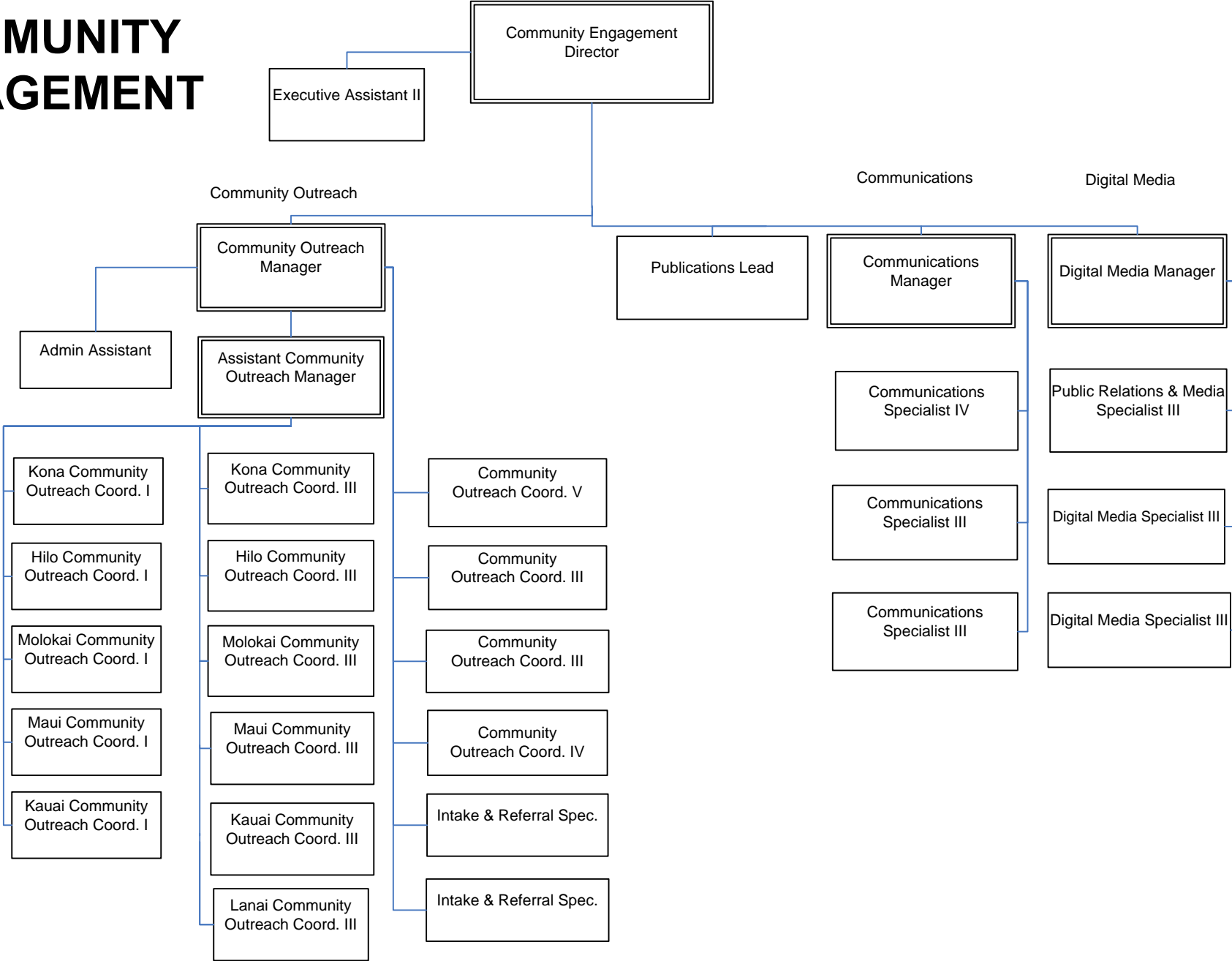
# RESOURCE MANAGEMENT/ LAND ASSETS



CONFIDENTIAL

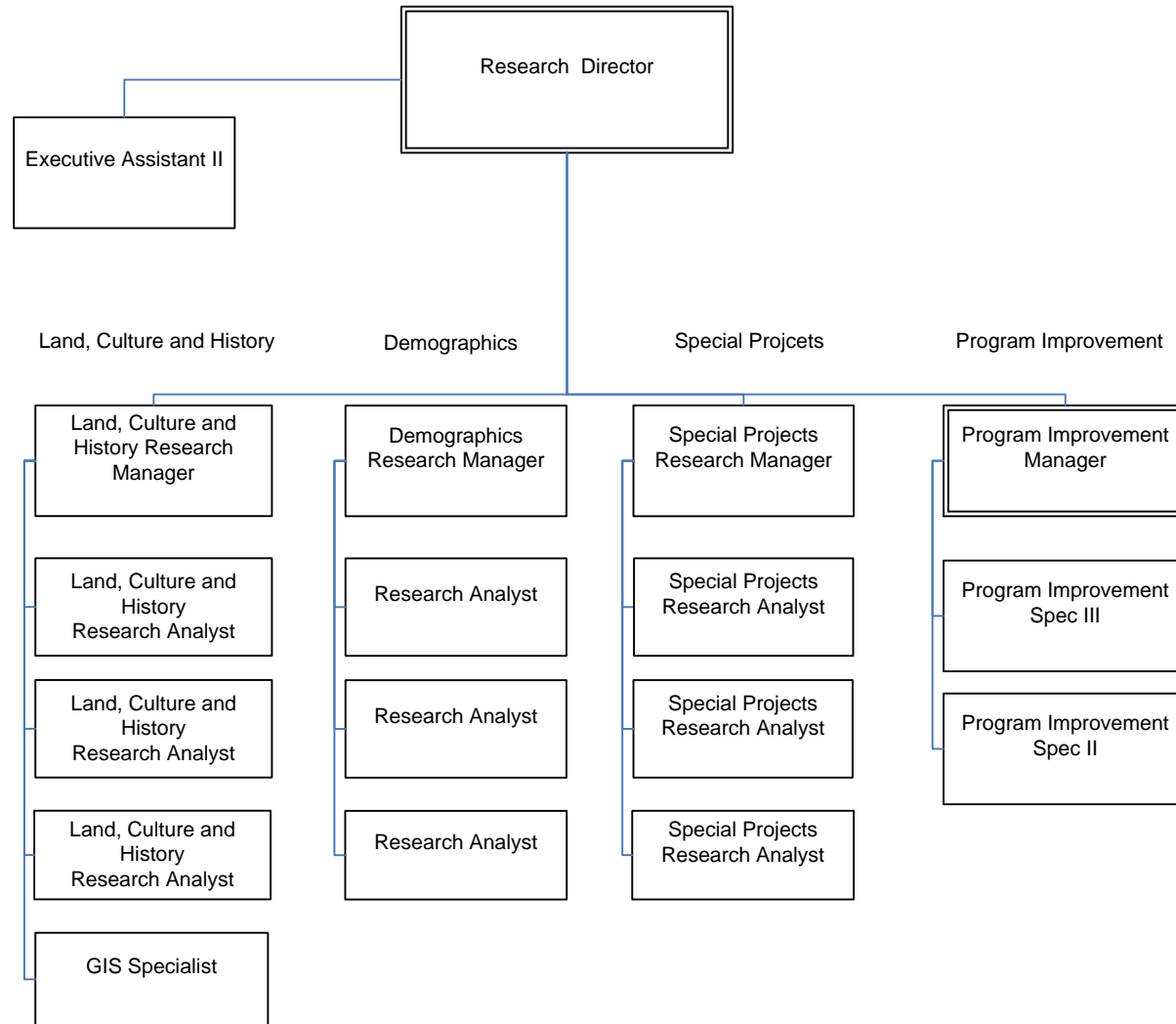


# COMMUNITY ENGAGEMENT



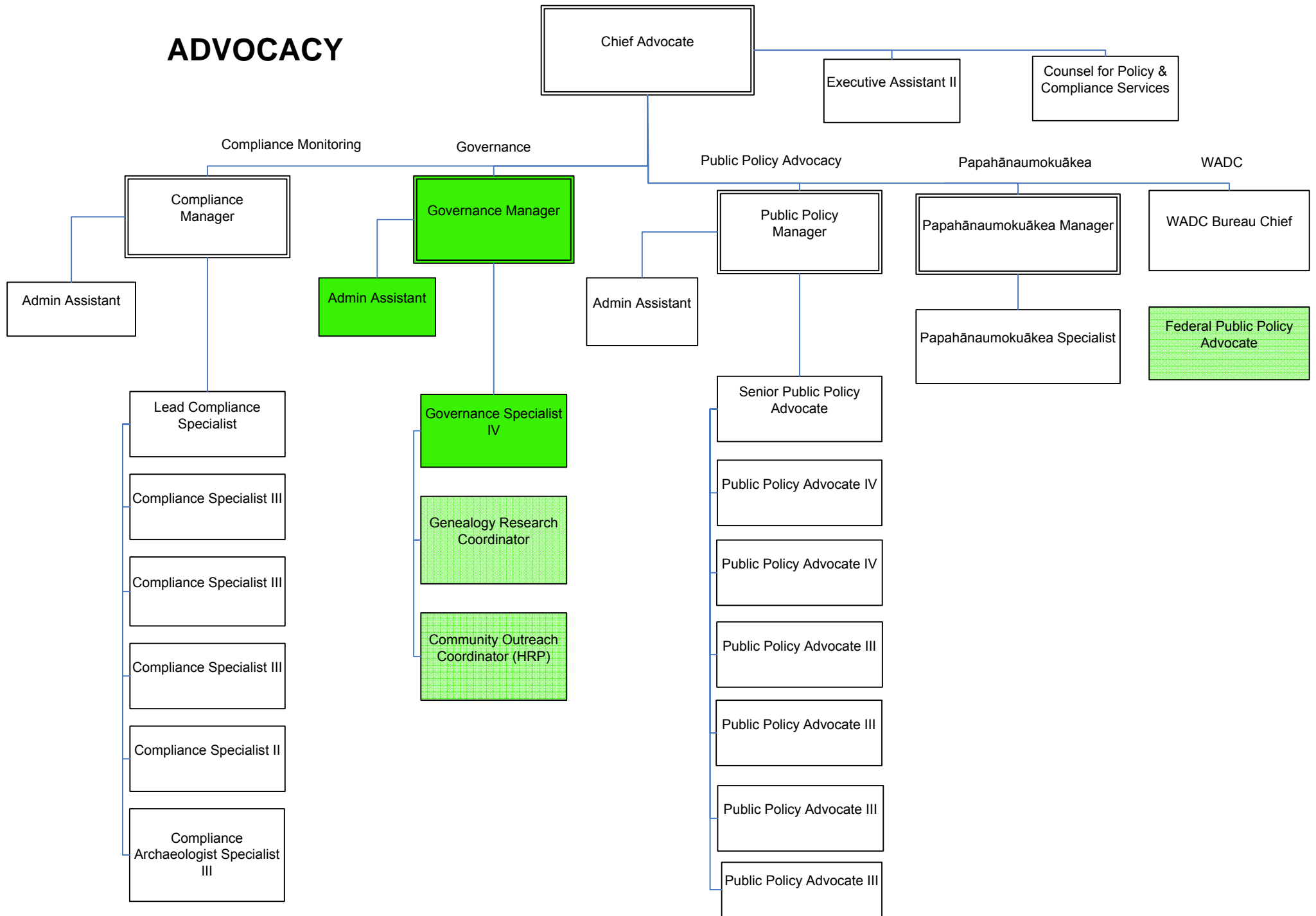
CONFIDENTIAL

# RESEARCH



CONFIDENTIAL

# ADVOCACY



CONFIDENTIAL