

Kahuku Wind Farm First Wind/Xtreme Power Battery Equipment Storage System Fire

Presented to
Senate Committee on Energy and Environment
December 4, 2012

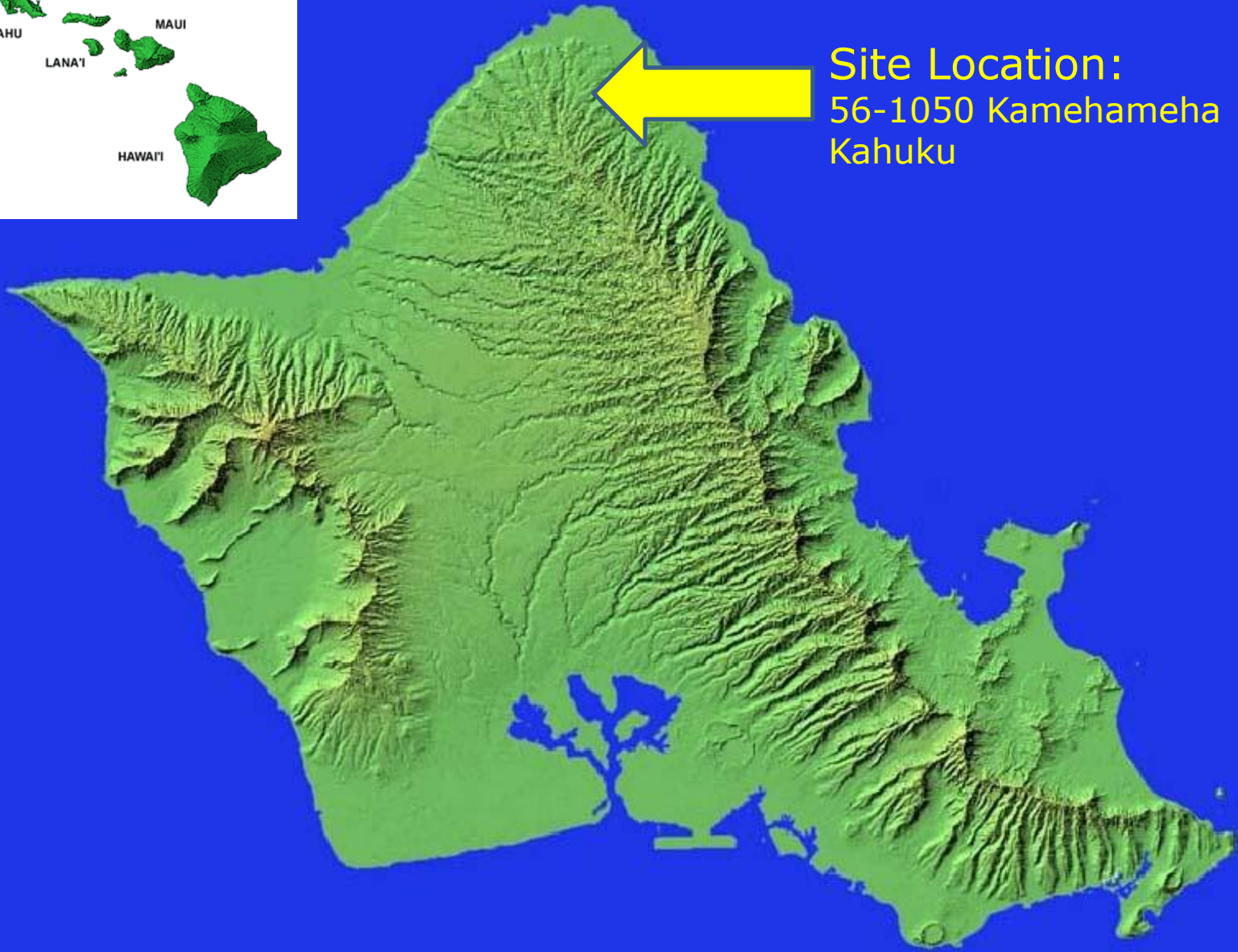
Gary Gill, Deputy Director
Hawaii Department of Health
Environmental Health Administration
Hazard Evaluation and Emergency Response
(HEER) Office



State Response Authority

- Statute: Hawaii Revised Statutes 128D
 - Hawaii Environmental Response Law
- Regulation: Title 11, Chapter 451, Hawaii Administrative Rules
 - State Contingency Plan (SCP)





Site Location:
56-1050 Kamehameha Hwy,
Kahuku



Battery Energy Storage System (BESS) Building – Kahuku, HI
 56-1050 Kamehameha Highway

First Wind / Xtreme Power
 Battery Energy Storage
 System (BESS)

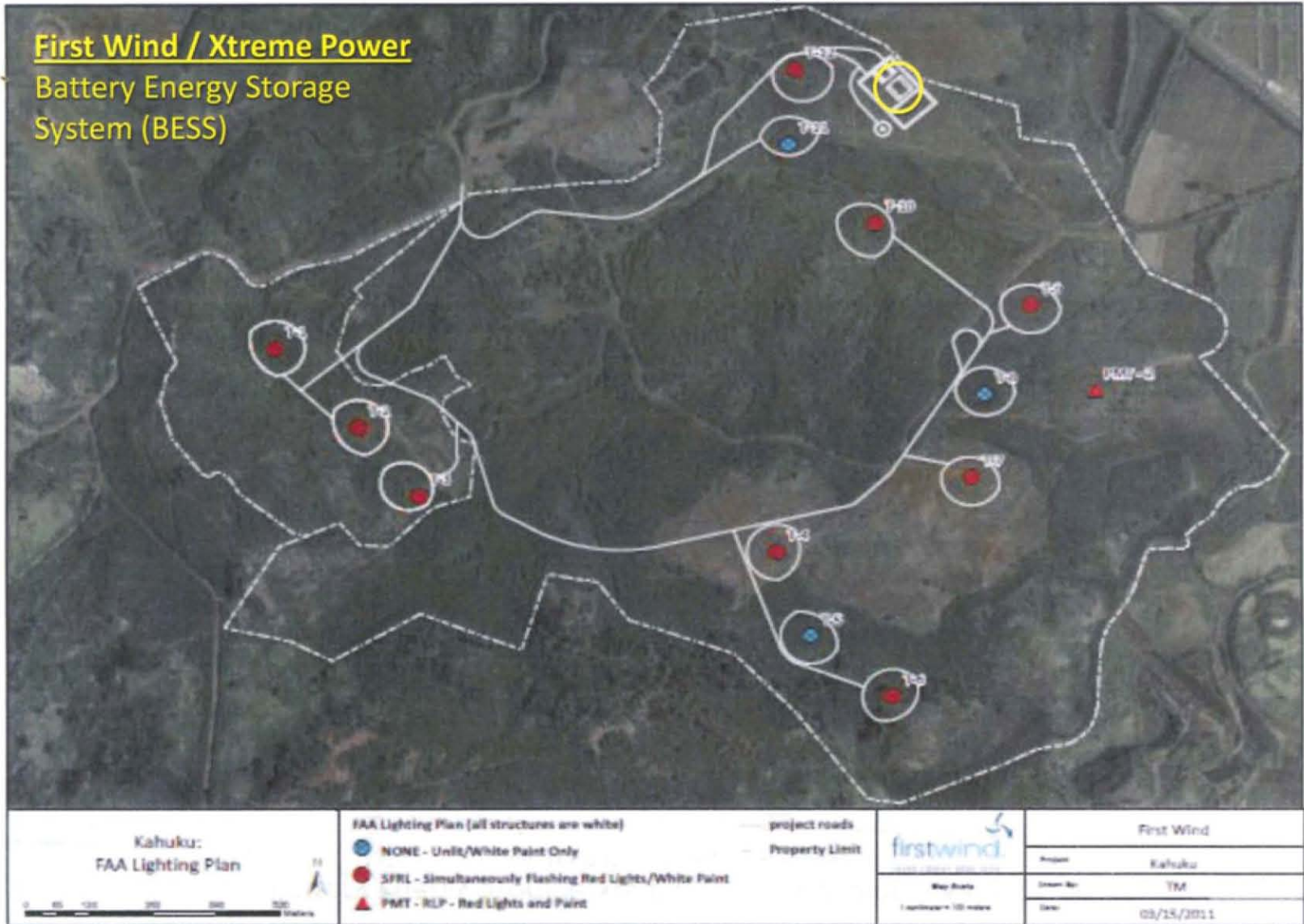


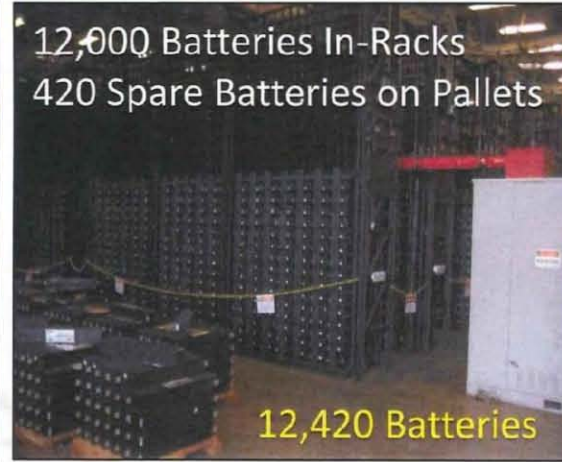
Photo courtesy: First Wind



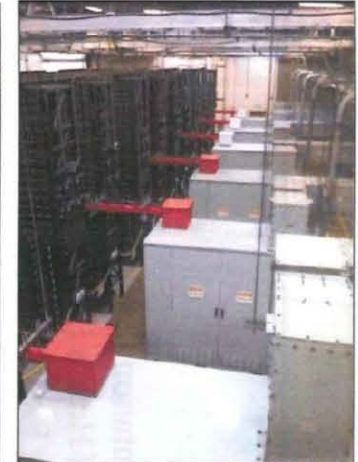
Battery Energy Storage System (BESS) Building – Kahuku, HI
56-1050 Kamehameha Highway



Xtreme Power BESS Building Entrance (Looking SE)



BESS Building In-Rack Battery Storage



BESS Building Inverter



Xtreme Power BESS Building (Looking NW)





Aug. 1, 2012

Photo Courtesy: Jay Armstrong





Photo Courtesy: KHON 2





Photo Courtesy: Robert Tamble, Xtreme Power





Photo Courtesy: Robert Tamble, Xtreme Power



NEIL ABERCROMBIE
GOVERNOR OF HAWAII



LORETTA J. FUDDY, A.C.S.W., M.P.H.
DIRECTOR OF HEALTH

STATE OF HAWAII
DEPARTMENT OF HEALTH
P.O. Box 3378
HONOLULU, HAWAII 96801-3378

In reply, please refer to:
File: EHA/HEER Office

NOTICE OF INTEREST IN A RELEASE OR THREATENED RELEASE OF
HAZARDOUS SUBSTANCES

Name: Robert Tamble
First Wind / Xtreme Power Case No.: 20120801-1356
Address: 1120 Gofirth Road Kyle, Texas 78640
Date/Time: 8/3/2012 3:45 p.m.

Location (Facility) at or from which the release has occurred or is threatened to occur: First Wind / Xtreme Power
Battery Equipment Storage System (BESS) 56-1160 Kamehameha Hwy
Kahuku

You are hereby notified that a release or threat of a release of a hazardous substance, as defined in Section 128D-1, Hawaii Revised Statutes (HRS), has occurred or is threatened to occur at the above described facility of which you are believed to be the owner, operator, transporter or generator and that pursuant to Chapter 128D, HRS, the Director of Health for the State of Hawaii (Director) has an interest in the release or threatened release. This letter notifies you of your potential liability as defined by Section 128D-6 HRS, which you may have incurred with respect to the site.

Pursuant to Chapter 128D, HRS, the Director may take several actions that include issuing an order directing you to take appropriate response measures concerning the release. Failure to comply with such an order may subject you to penalties and an obligation to repay the State for any expenditures of its funds if the State conducts the response action.

However, if before such an order is issued you demonstrate to the satisfaction of the Director or his designee a willingness and the ability to undertake appropriate response actions and actually undertake such response actions within a reasonable period of time, the activity of the State may be limited to monitoring the progress of your actions and providing guidance as necessary.

Specific concerns, but not limited to: Battery Equipment Storage System Fire,
environmental clean-up plan + implementation timeline; measures
undertaken to prevent re-occurrence

You are advised that if the Director determines that your response actions, in whole or in part, are unsatisfactory, the Director may take over response activities.

You are also notified that the Director has designated Liz Galvez of the Office of Hazard Evaluation and Emergency Response (HEER) of the Department of Health as the State On-Scene Coordinator (SOSC). The SOSC may be contacted at the HEER, Hawaii Department of Health, 919 Ala Moana Boulevard, Suite 206, Honolulu, Hawaii 96814. Phone: (808) 586-4249.

Issued at Honolulu, Hawaii this 3rd day of August 2012.

[Signature]
(State On-Scene Coordinator)

Received and Acknowledged:

Name: ROBERT TAMBLE Date: 8/3/12 Time: 3:45 pm
(Please Print)

Robert Tamble
Signature Witness Signature

“Notice of Interest in a Release (NOI) or Threatened Release of Hazardous Substances”



Environmental Investigation

- Sampling Plan developed to identify environmental impact resulting from the fire:
 - Air (Airborne Lead)
 - Soil (Soil Contamination)
 - Surface (Lead Dust)
- Focus on potential environmental impact downwind from property. Sampling intervals @ 100 yards, ¼-mile, and 1-mile from BESS building in direction of smoke plume.



BESS Building Fire - Kahuku

Environmental Monitoring / Sampling for Lead

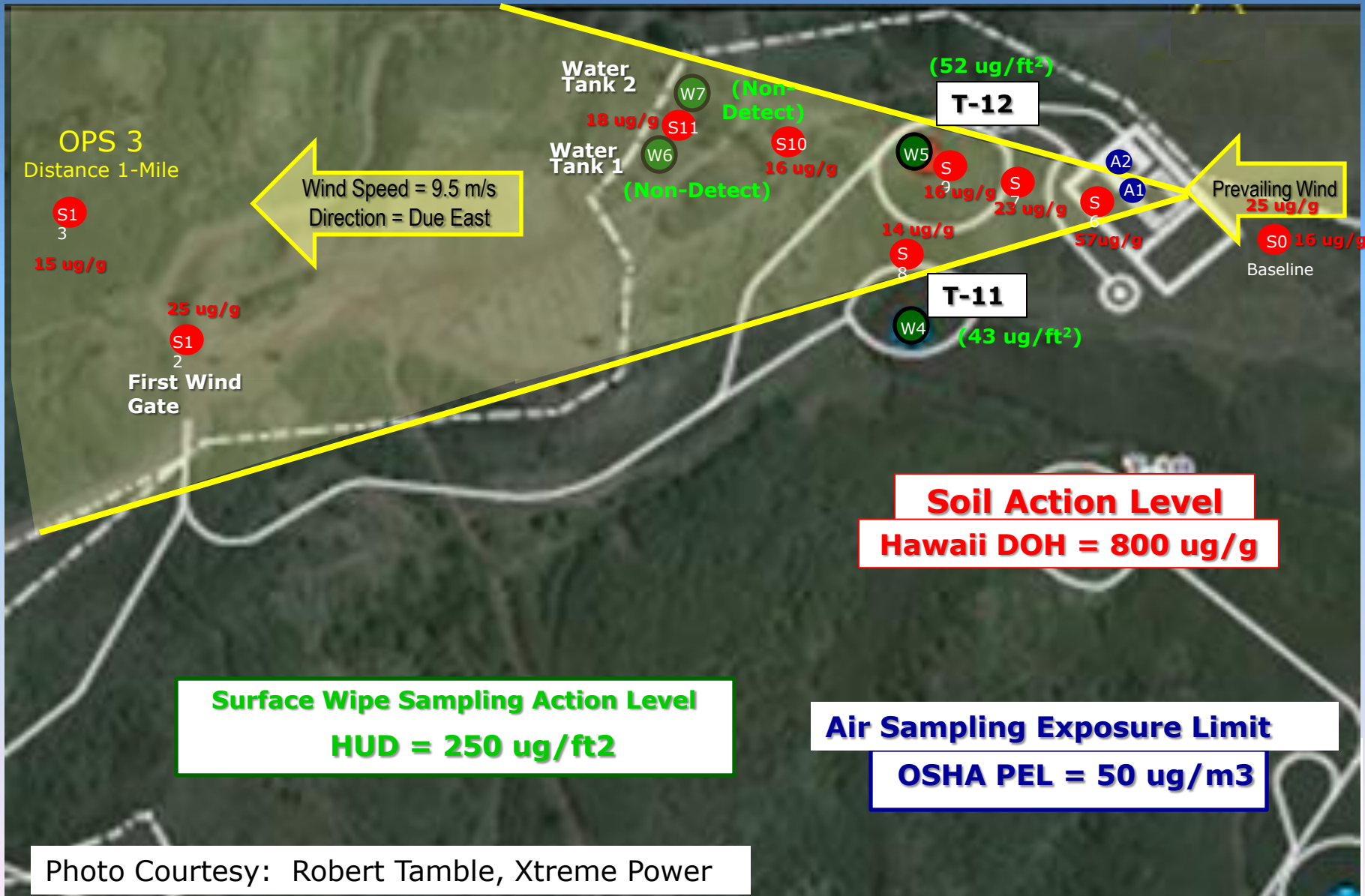


Photo Courtesy: Robert Tamble, Xtreme Power

Initial Investigation Findings & Followup

- Soil, Air, and Surface Wipe Sampling around BESS building and along smoke plume verified LEAD concentrations:
 - Well-below State and Federal action limits / guidelines
 - Indicative of natural background levels.
- DOH HEER continues to work with Xtreme Power and First Wind until the cleanup and disposal of the waste is complete.



Questions?

Hawaii Department of Health
Hazard Evaluation and Emergency Response
(HEER) Office
(808) 586-4249

