



Senate Committee on Energy and Environment
House Committee on Energy & Environmental Protection
Informational Briefing – January 12, 2012
10:00am, State Capitol, Conference Room 325

By

Lara Reynolds, Outreach Specialist, O'ahu Invasive Species Committee

The O'ahu Invasive Species Committee is a partnership united to protect our island from the most harmful invasive species that threaten our island's environment, watersheds, agriculture, economy and quality of life. OISC systematically controls or eradicates targeted invasive species before they become widespread, educates the public, and implements early detection programs to find newly introduced invasive species and control them before they "jump the fenceline." OISC and its field crew work island-wide in upland forests and urban areas to carry out its mission.

State support of OISC comes through the Hawai'i Invasive Species Council from the Natural Area Reserve Fund. Although OISC assists a number of government agencies in some of its work, it is not part of any agency's budget and does not have a dedicated funding source. Additionally, OISC receives financial support from the U.S. Fish and Wildlife Service and U.S. Forestry Service, but funding from both sources is projected to decline as federal budgets shrink. At current funding levels, OISC has not been able to complete its annual surveys for its priority target plant, miconia, in all the areas where seeding trees have been removed. Because miconia can go from seed to seeding in four years, it is extremely important that we are able to meet this goal every year until the seed sources and seed banks are depleted. Therefore, OISC requests your help in identifying and securing dedicated funding for this and our other priority work. We are greatly appreciative of current State support and ask legislators for their continued support by protecting and maintaining the Natural Area Reserve Fund.

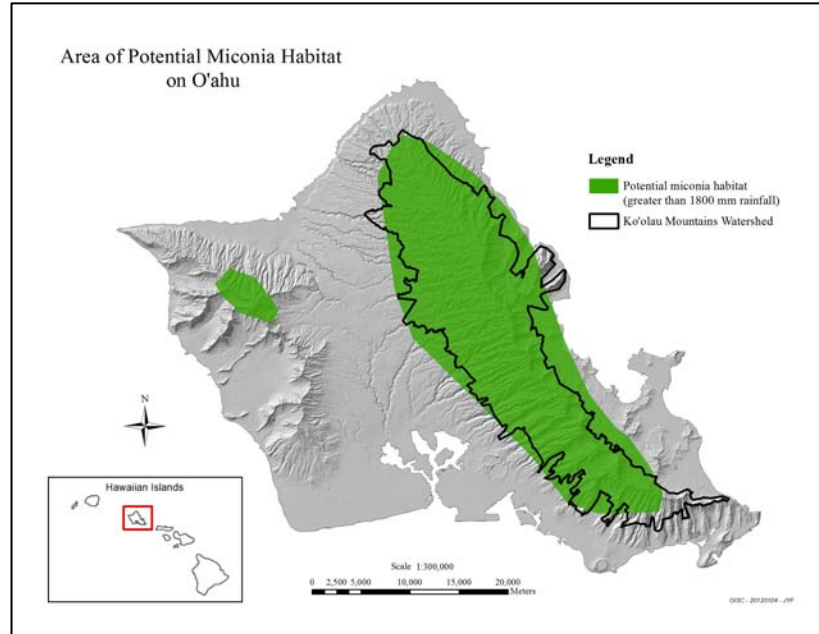
Thank you for the opportunity to participate in this informational briefing.



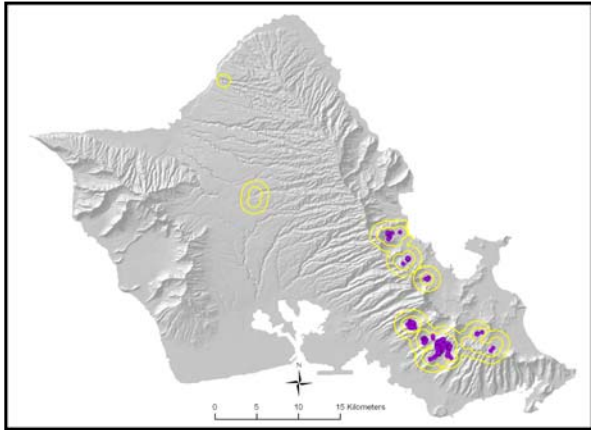
**What's at stake:
O'ahu's Watershed**



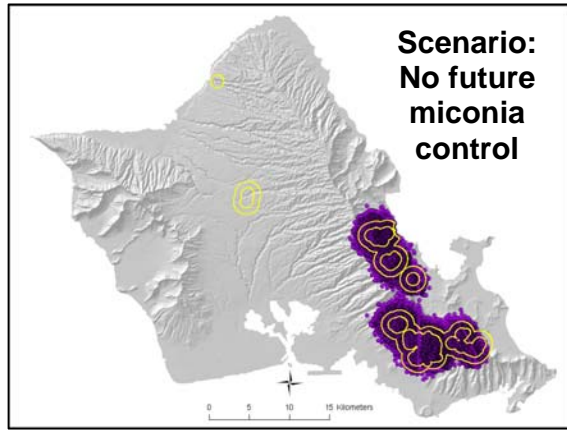
**OISC's Priority Target:
Miconia**



**O'ahu cannot afford to lose its watershed:
Potential Habitat for Miconia (in green) covers the
Ko'olau Mountains Watershed (outlined in black)**



Distribution of Miconia on O'ahu (dots) and areas under ongoing survey by OISC field crews (outlined areas around the dots)



Scenario: No future miconia control
What would happen if OISC Stopped? After 10 years, Miconia would cover the summit of the southern Ko'olau Mountains and damage the watershed



How OISC Stops Miconia on O'ahu: Ground & Aerial Surveys and On-the-Ground Control



Pampas Grass
Example of a Target in Urban Areas: Strategy: Remove from cultivation before it spreads