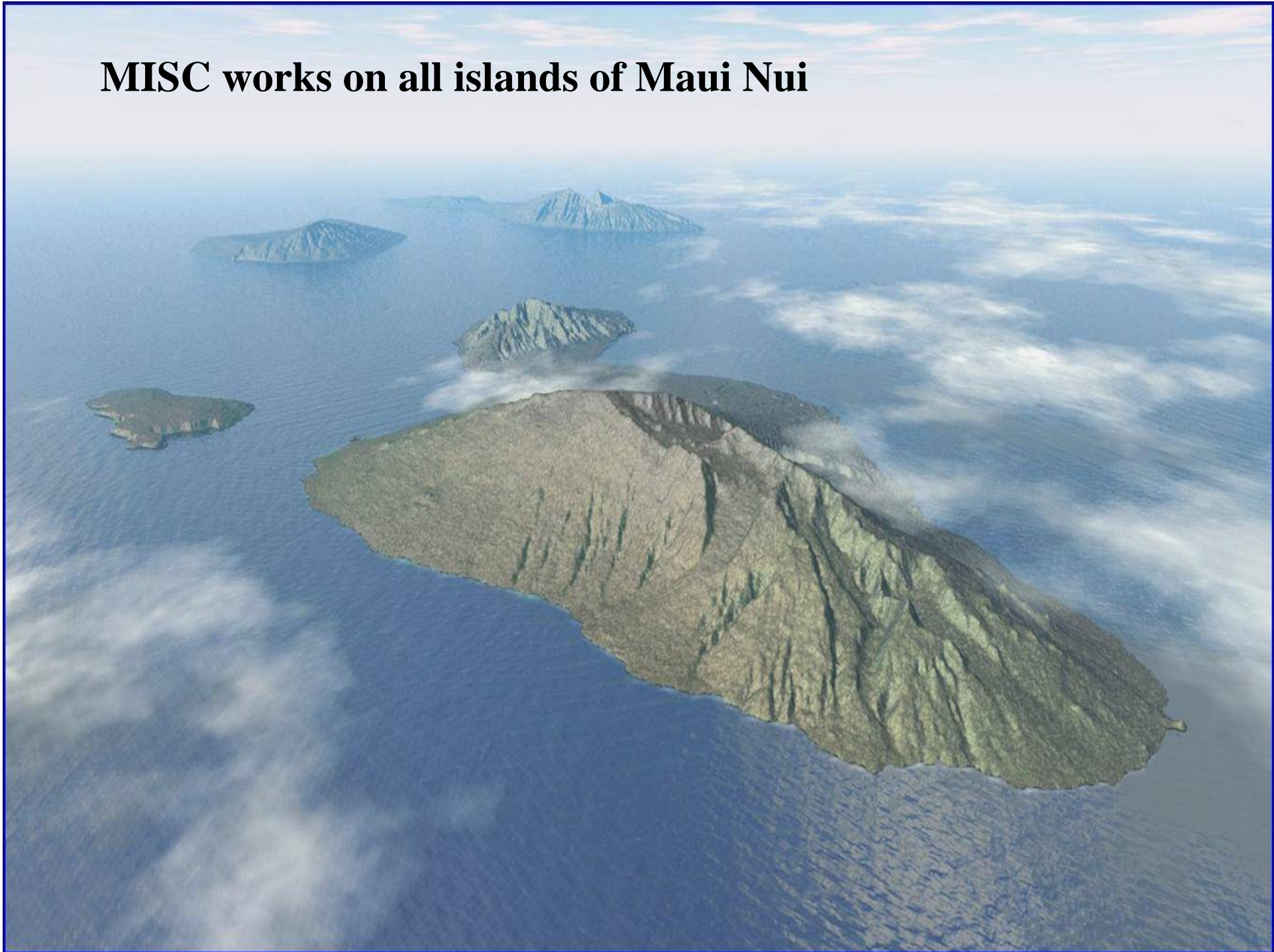


# Maui Invasive Species Committee

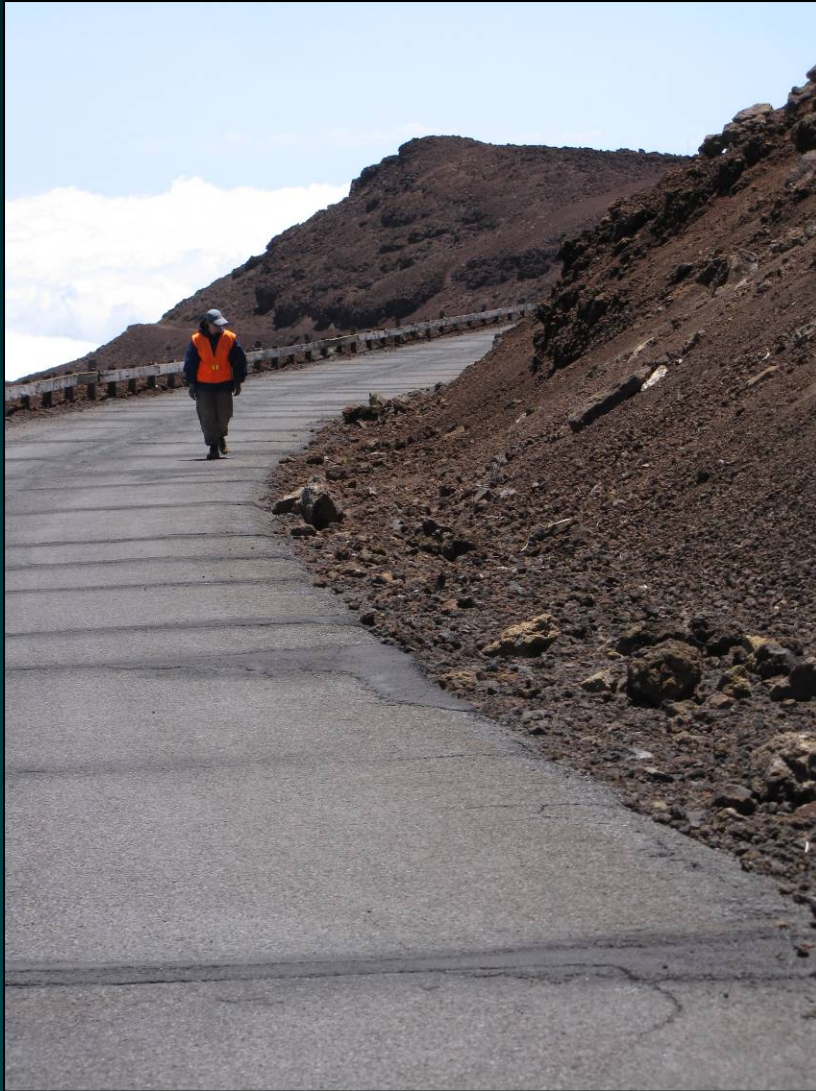


**Informational Briefing: January 12, 2012  
Senate Committee on Energy & Environment  
House Committee on Energy & Environmental Protection  
Adam Radford, MISC Operations Manager**

**MISC works on all islands of Maui Nui**



**MISC works from the mountain...**



**...to the sea**



on plants...



animals...



invertebrates...



...and a plant disease



**in backyards...**



**...and wildlands**



on the ground...



...and in the air



in classrooms...



teaching teachers...



at parades...



at public events...



...and in the field with our keiki

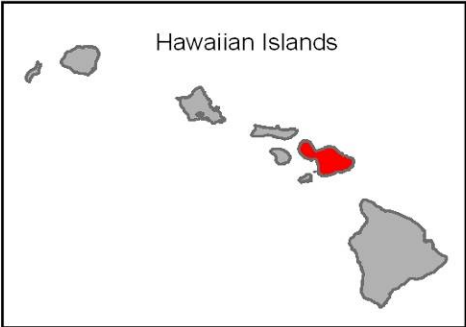
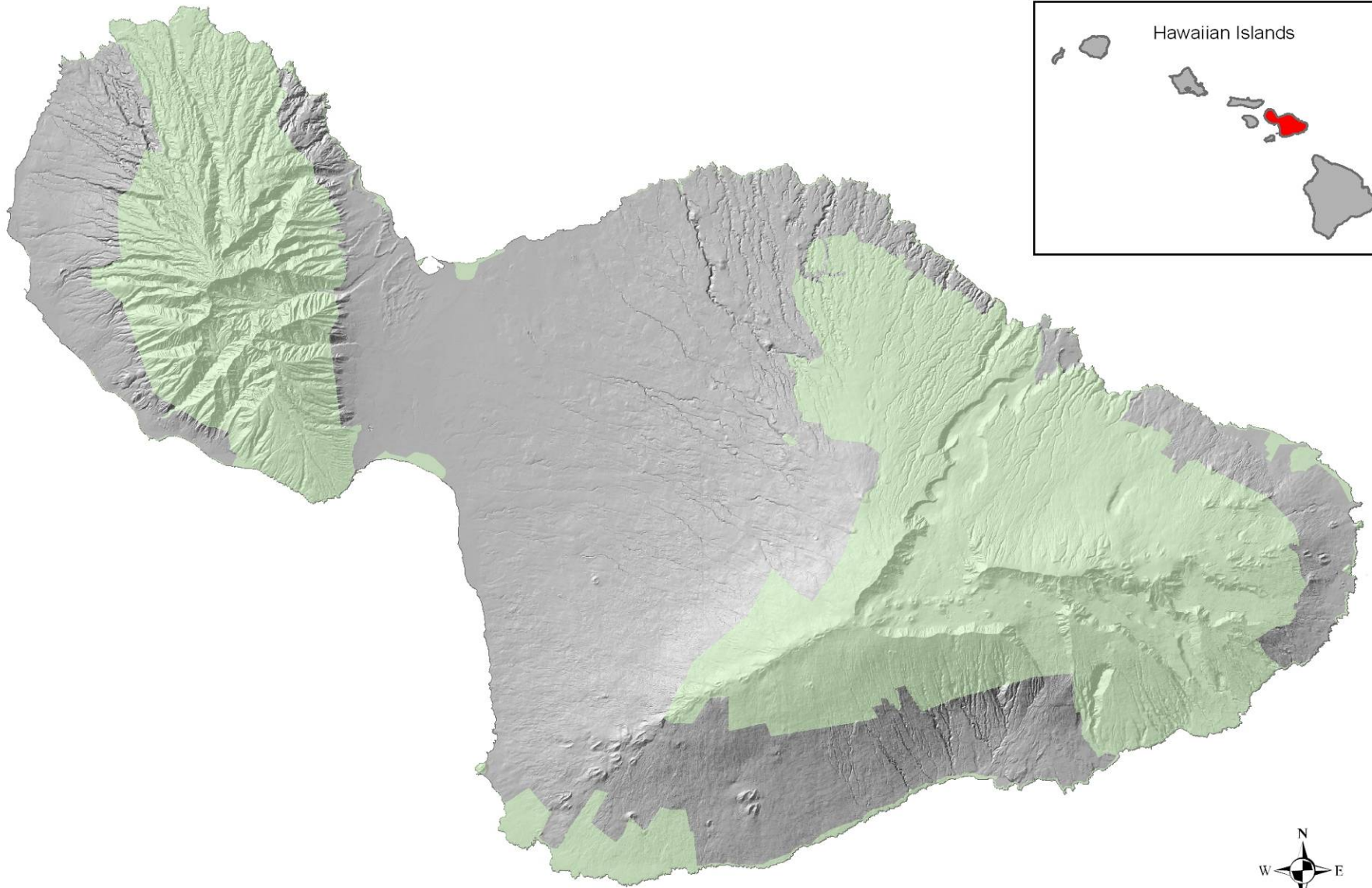


**MISC also works to stop invasive species from becoming widely established by conducting surveys at**

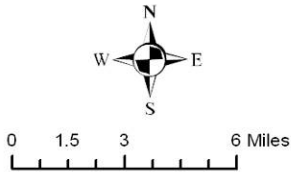
- nurseries & botanical gardens
- along roadsides



# Conservation Zoned Lands on Maui

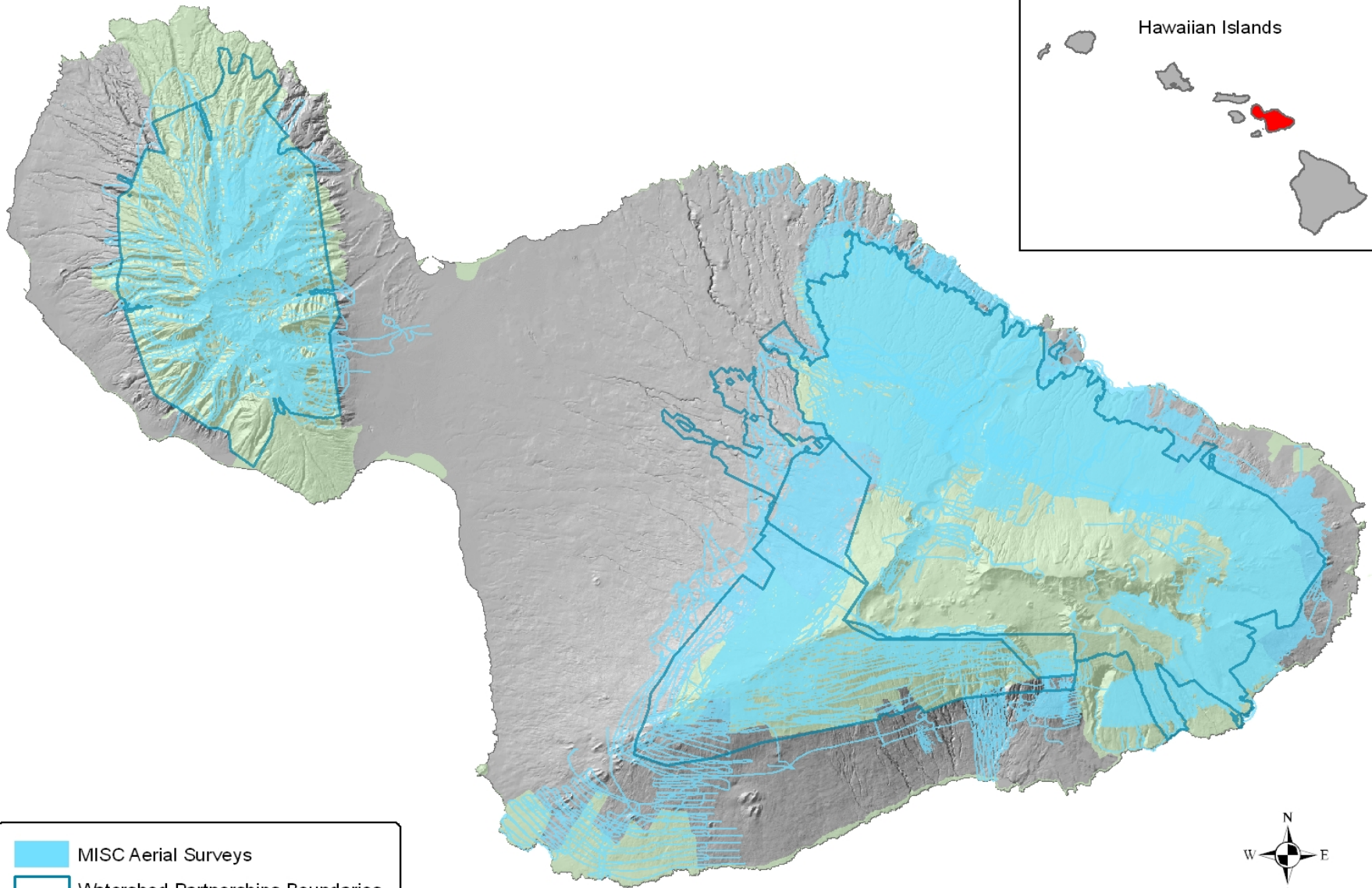
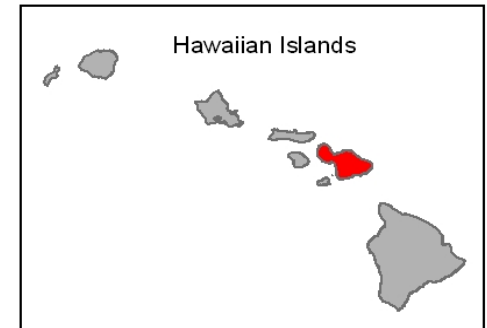




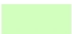
 Conservation Zoned Lands



1/4/2012 BVM

# Aerial Surveys on Maui



-  MISC Aerial Surveys
-  Watershed Partnerships Boundaries
-  Conservation Zoned Lands



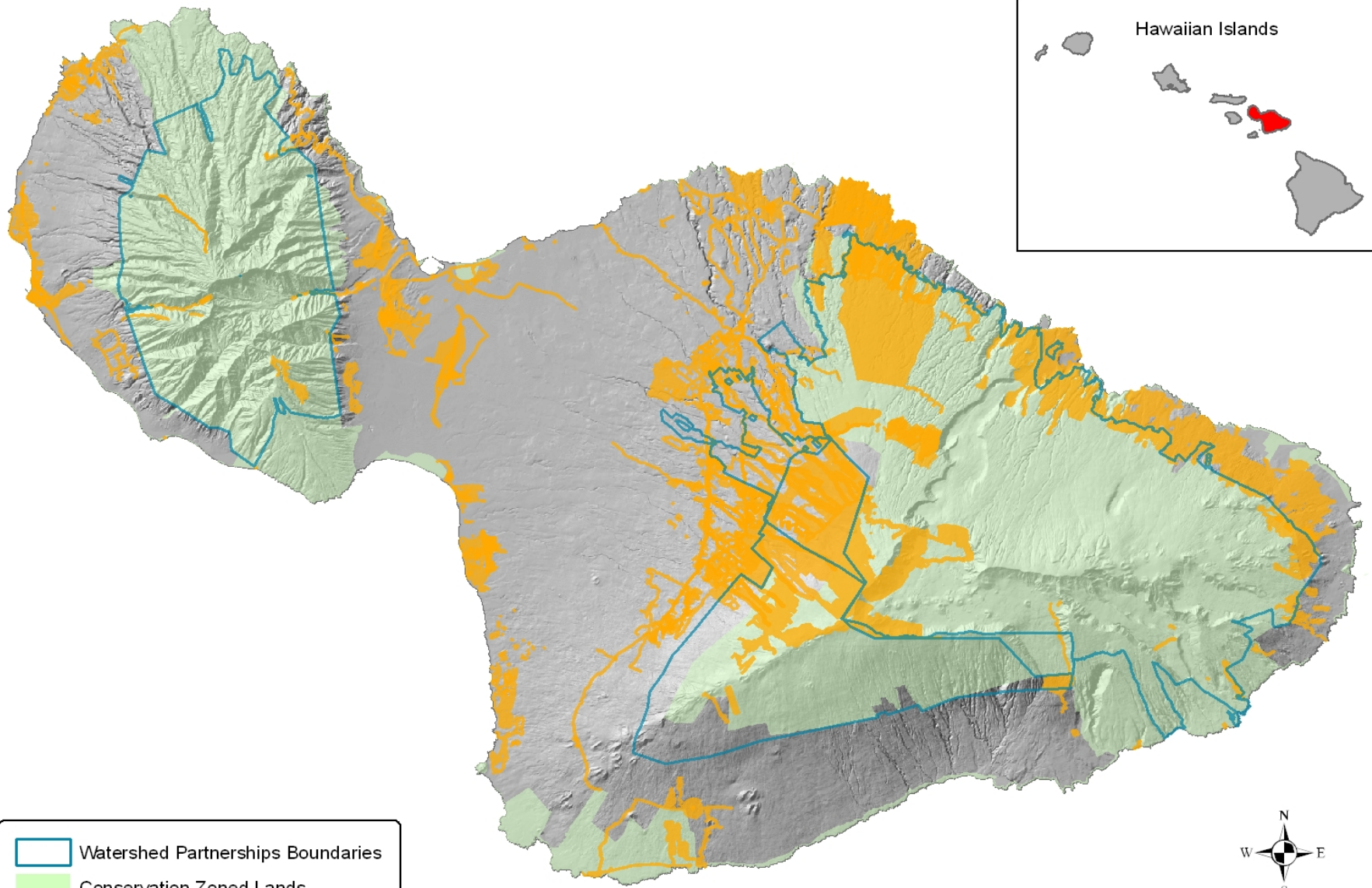
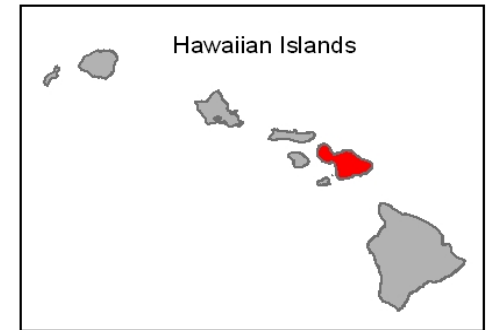
0 1.5 3 6 Miles


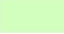

A scale bar indicating distances in miles, with markings at 0, 1.5, 3, and 6 miles.

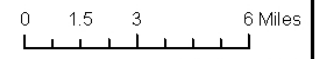
1/4/2012 BVM

The date and initials of the map's creation or revision.

# Ground Surveys on Maui

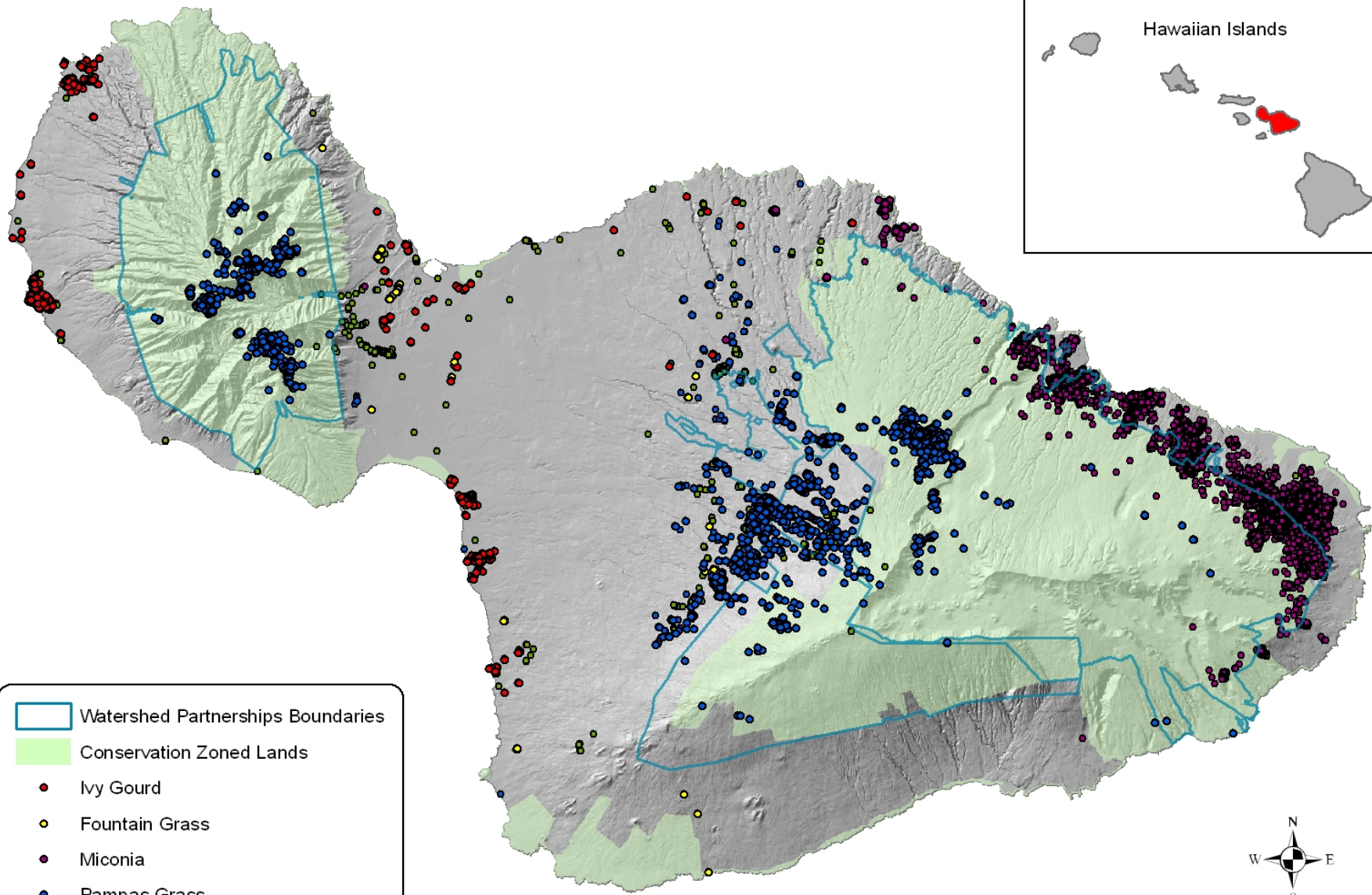
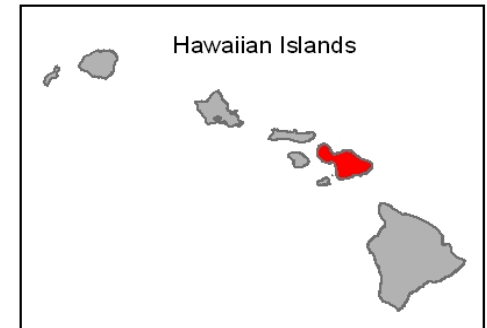


-  Watershed Partnerships Boundaries
-  Conservation Zoned Lands
-  MISC Ground Surveys

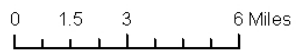


1/4/2012 BVM

# Control Work on Maui

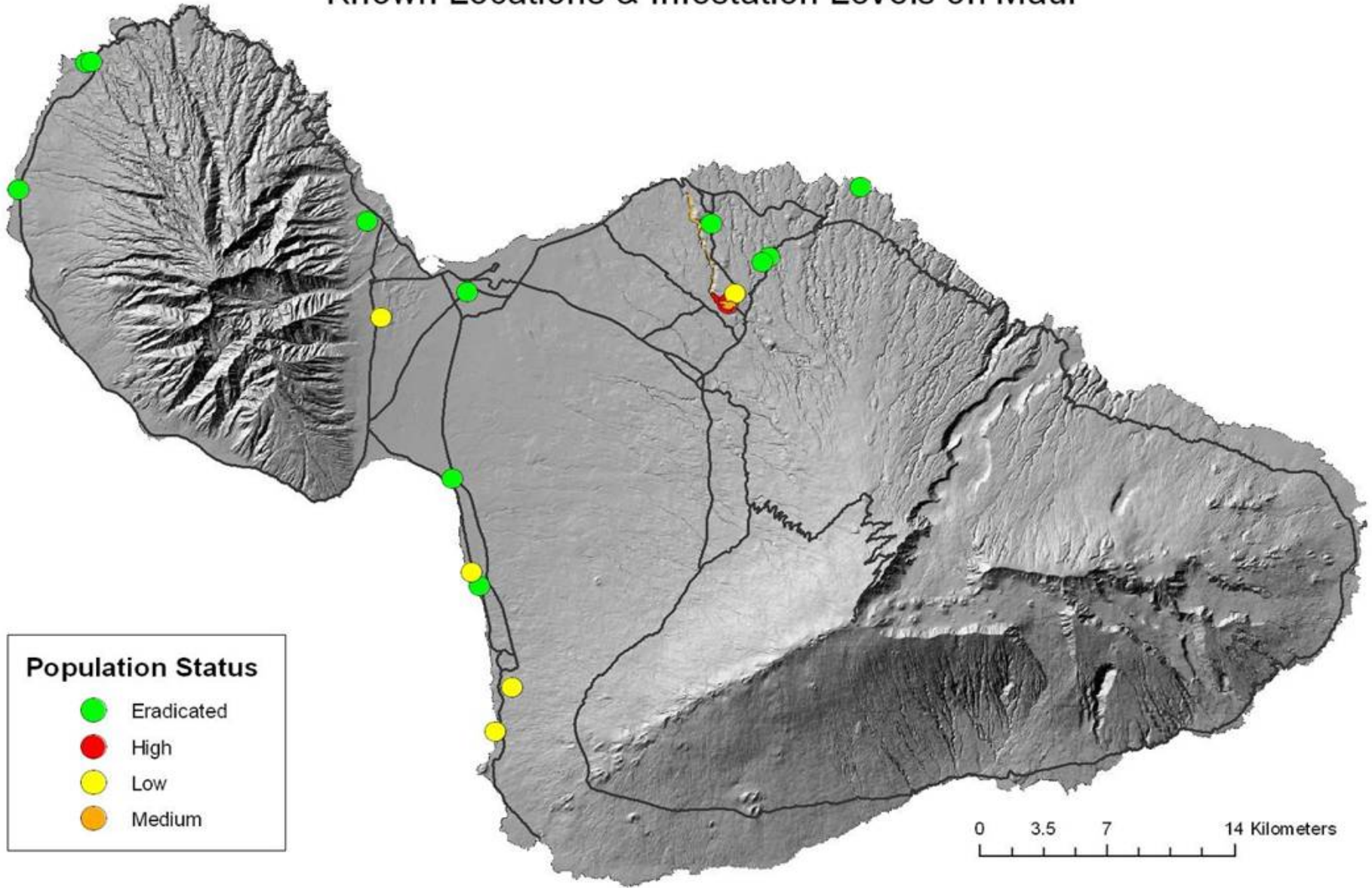


- Watershed Partnerships Boundaries
- Conservation Zoned Lands
- Ivy Gourd
- Fountain Grass
- Miconia
- Pampas Grass
- Other Plants



1/4/2012 BVM

# Coqui Frog Populations Known Locations & Infestation Levels on Maui



## Population Status

- Eradicated
- High
- Low
- Medium

0 3.5 7 14 Kilometers



**Maliko Gulch: Coqui-frog heaven**

# Maliko Gulch: mixed-method approach





# Voluntary Coqui-free Certification Program

- established criteria for compliance
- based on HDOA draft rules
- nursery inspections by ISC staff &/or partner agencies
- recognition for cooperating nurseries



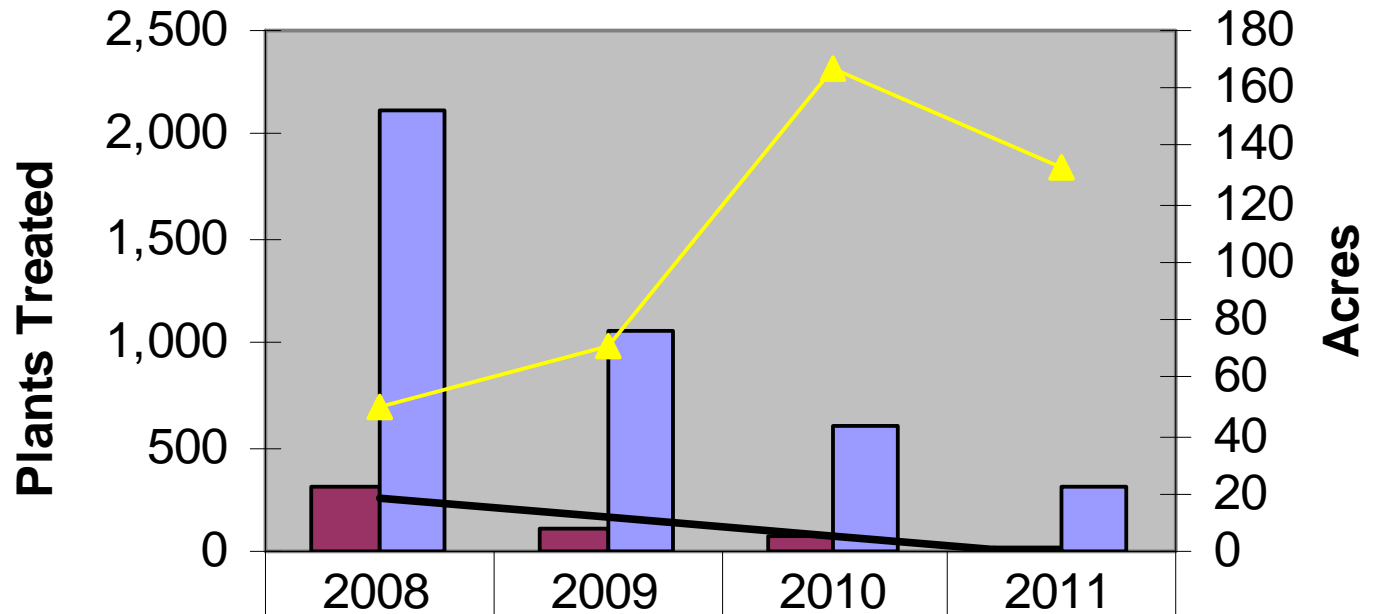





**Pampas grass on a ridge**



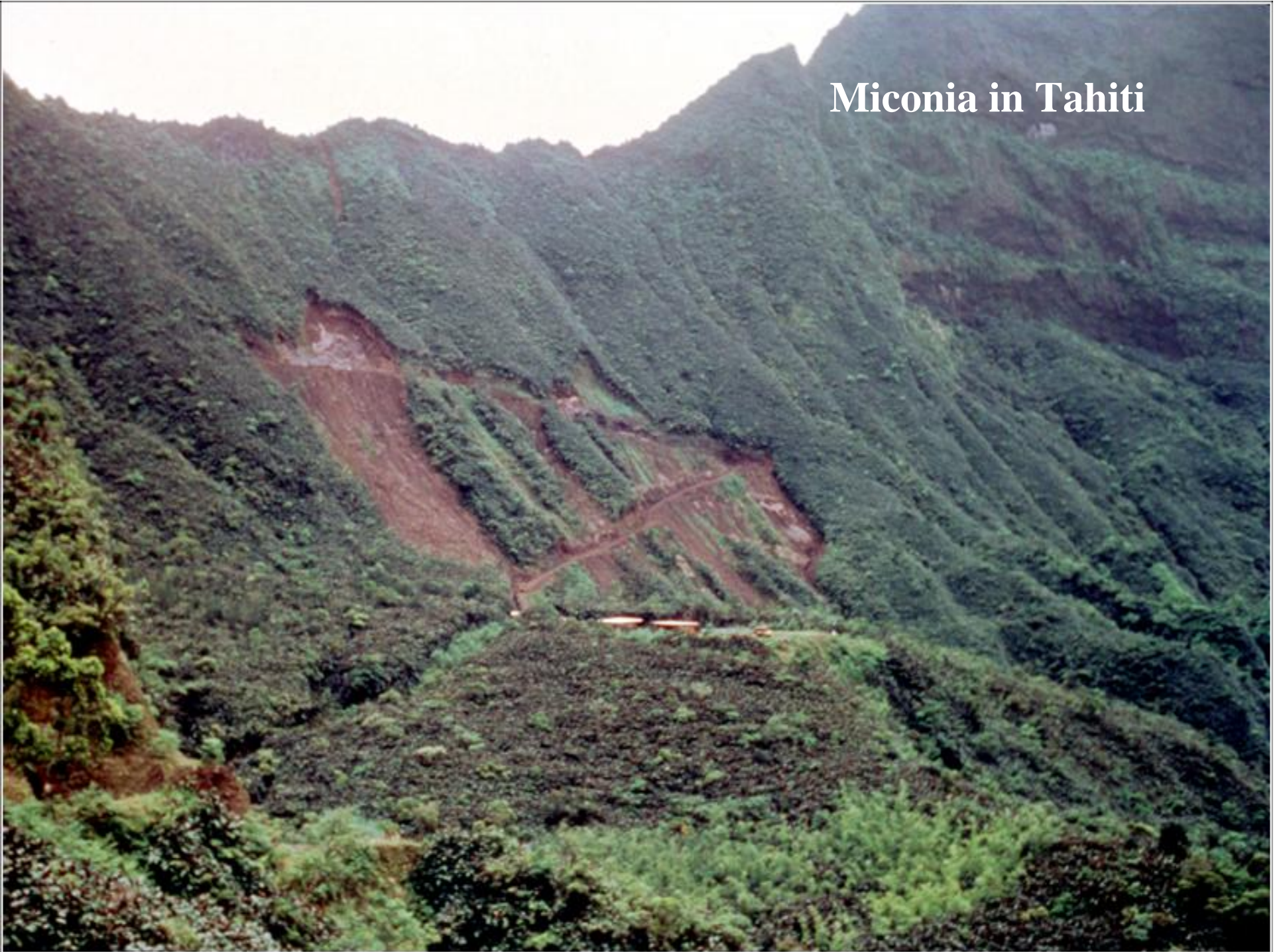
**Remote field camp**

## Pampas Grass: Honomanu Area



 Mature	304	113	70	16
 Immature	2,110	1,062	610	309
 Acres Inventoried	50	71	167	133

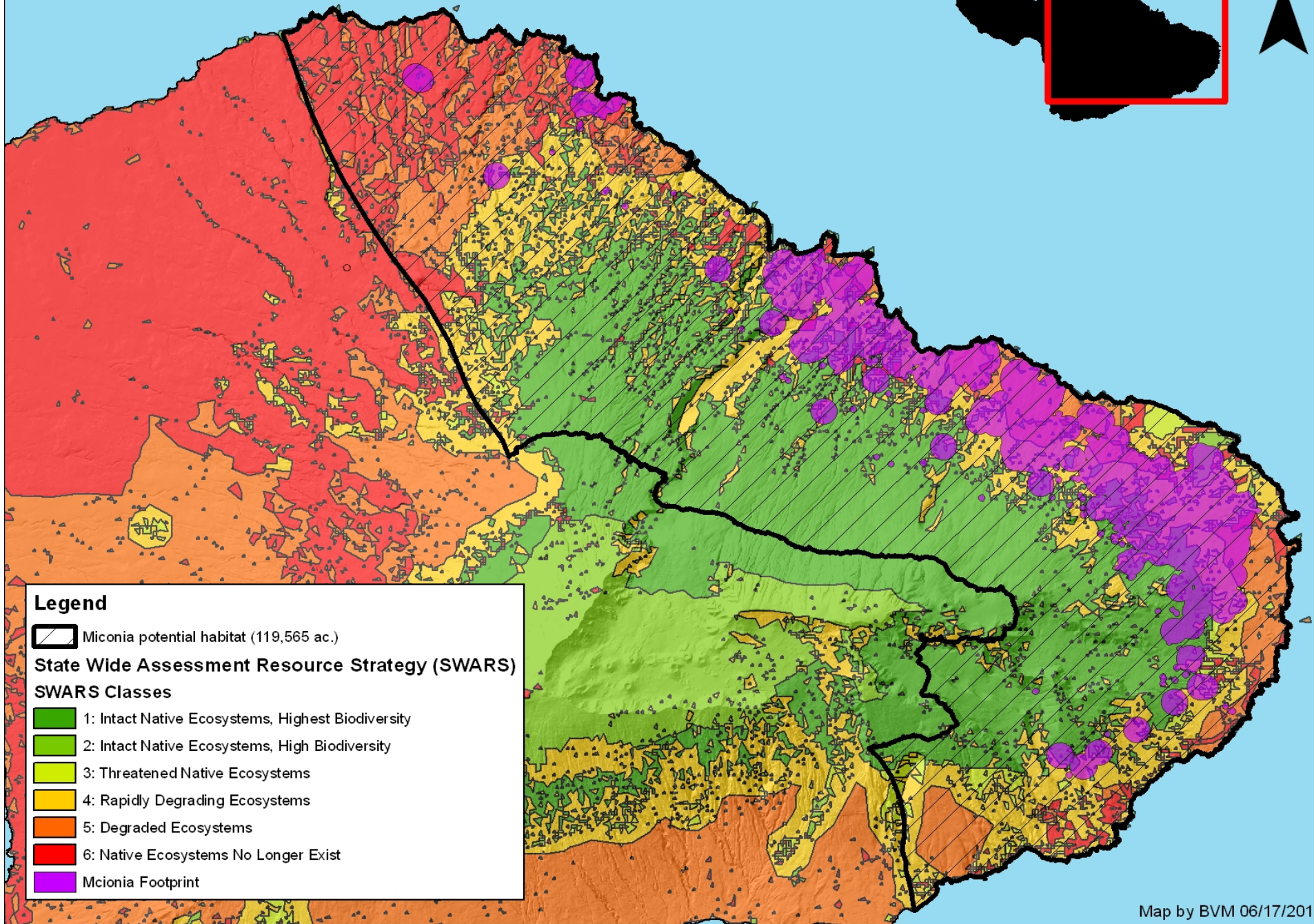
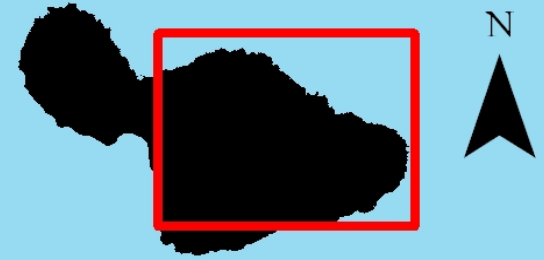
## Miconia in Tahiti



# Miconia on Maui



# Miconia Infestations and Intact Native Habitat










## Legend

 Miconia potential habitat (119,565 ac.)

### State Wide Assessment Resource Strategy (SWARS)

#### SWARS Classes

-  1: Intact Native Ecosystems, Highest Biodiversity
-  2: Intact Native Ecosystems, High Biodiversity
-  3: Threatened Native Ecosystems
-  4: Rapidly Degrading Ecosystems
-  5: Degraded Ecosystems
-  6: Native Ecosystems No Longer Exist
-  Miconia Footprint

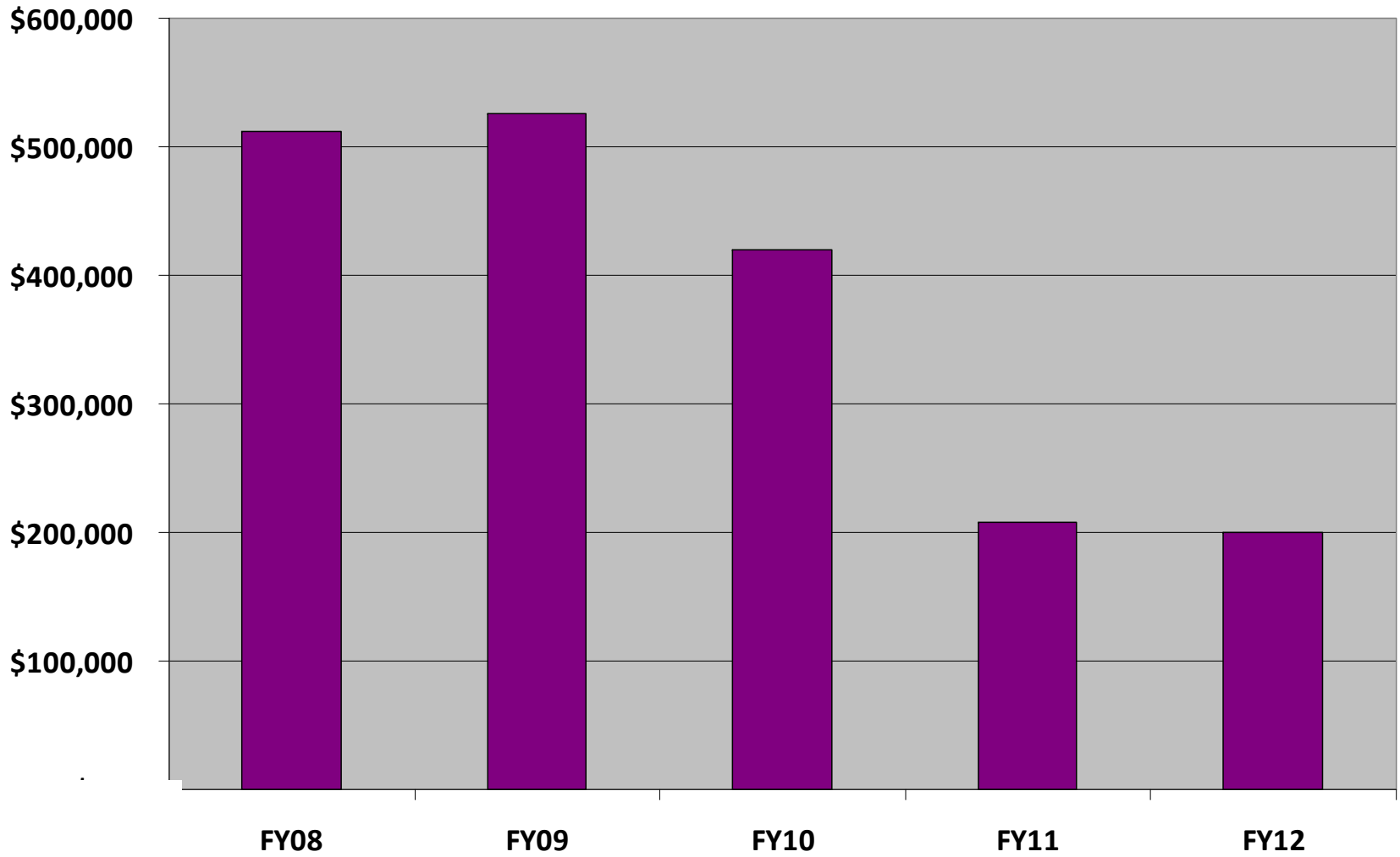
# CHALLENGES

- recalcitrant landowners
- inter-island movement of pest species
- stable, adequate, long-term funding





**State Funding for MISC & MoMISC  
All Sources: FY08-FY12**



# Effective Partnerships = Key to Success



**MISC & MoMISC are projects of the  
Pacific Cooperative Studies Unit – University of Hawai‘i**



Mahalo nui!

