

# Invasive Species Control: Mauka to Makai

## Kaua`i Invasive Species Committee



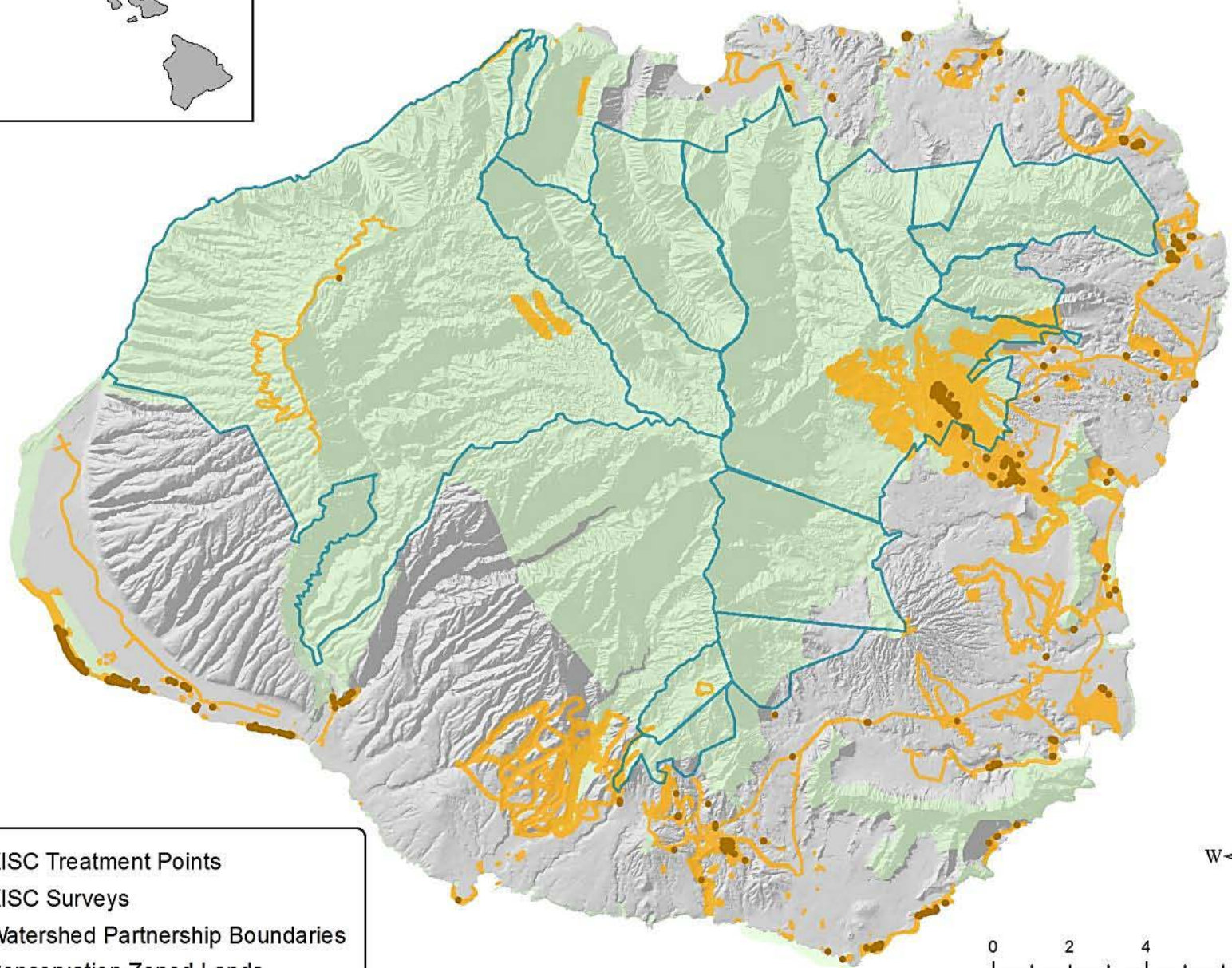
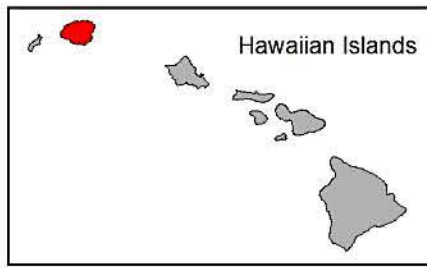
Informational Briefing  
The Twenty-Sixth Legislature  
January 12, 2012



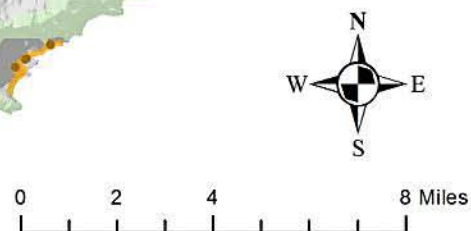
# KISC Top Priorities

- Protect the watershed
- Fill the gaps between agencies and organizations
- Stop the spread of new island introductions
- Collaborate with partners
- Educate and inform the public regarding the threats that invasive species pose

# KISC Protects the Watersheds



- KISC Treatment Points
- KISC Surveys
- Watershed Partnership Boundaries
- Conservation Zoned Lands





# KISC fills the gaps between agencies

- Early detection surveys, response, and control for newly arrived invasive plants
  - (2010 Island-wide Roadside Survey)



Wax Myrtle detected and eliminated

# KISC stops the spread

- Island-wide eradications for targeted plant species



Successfully eradicated  
fireweed on Kauai from two  
infestation sites.

# KISC collaborates with partners

- Miconia survey & control
- Coqui response and eradication
- Rapid response and detection for mongoose sightings



Working on long thorn kiawe with HDOA at PMRF



KISC strategizes with DOFAW and TNC regarding miconia operations in the Wailua Game Management Area.

Funding for aerial operations has been contributed by TNC as well as by UH-CTAHR.

On-the-ground survey and treatment have involved personnel from many different agencies and organizations.

KISC considers miconia eradicable on Kauai.





Through habitat modification, spraying with citric acid, and monitoring, Kauai's only wild-land population of coqui is thought to be eradicated.

No calling frogs have been heard for 7 months.

Partners involved State, Federal, County, and private individuals.





Kauai has had over 75 credible sightings of mongoose since 1968 and one road-kill (1976).

Verification of mongoose presence on Kauai would result in better protection of high-value areas for native ground-nesting birds.

KISC partners with DOFAW.





# KISC educates and informs

- K-12 and Kauai Community College service projects and presentations
- Island-wide outreach at public events
- Free posters, brochures, and flyers to community members
- Early Detection Workshops
- Presentations to conservation partners, professionals, and decision-makers

# GO NATIVE!

Replace these invaders:

Protect the forest from your backyard



## Little Fire Ant

### Impacts to Hawai'i

**Quality of life:** LFA deliver a powerful sting causing large, painful welts. Welts can last days, followed by an intense itching sensation. These stinging ants will infest yards, gardens, and homes.

**Domesticated animals:** Stings to pets and livestock can lead to blindness.



# COQUI PATROL

## Whistle While You Work

**KISC**  
KAUAI INVASIVE SPECIES COMMITTEE



# *What we protect today, we will have for tomorrow*

- Healthy watersheds
  - Intact native ecosystems
  - Unique natural resources
  - Sustainable agriculture
- ...and more

The ISCs can continue to protect Hawai`i with dedicated funding and continued political support.

