

House District _____

Senate District _____

THE TWENTY-SIXTH LEGISLATURE
HAWAII STATE LEGISLATURE
APPLICATION FOR GRANTS & SUBSIDIES
CHAPTER 42F, HAWAII REVISED STATUTES

Log No: 105-0

For Legislature's Use Only

Type of Grant or Subsidy Request:

GRANT REQUEST – OPERATING

GRANT REQUEST – CAPITAL

SUBSIDY REQUEST

"Grant" means an award of state funds by the legislature, by an appropriation to a specified recipient, to support the activities of the recipient and permit the community to benefit from those activities.

"Subsidy" means an award of state funds by the legislature, by an appropriation to a recipient specified in the appropriation, to reduce the costs incurred by the organization or individual in providing a service available to some or all members of the public.

"Recipient" means any organization or person receiving a grant or subsidy.

STATE DEPARTMENT OR AGENCY RELATED TO THIS REQUEST (LEAVE BLANK IF UNKNOWN): _____

STATE PROGRAM I.D. NO. (LEAVE BLANK IF UNKNOWN): _____

1. APPLICANT INFORMATION:

Legal Name of Requesting Organization or Individual:
Young Men's Christian Association Of Honolulu
Dba:
YMCA Of Honolulu – Kalihi Branch
Street Address:
1335 Kalihi Street, Honolulu, HI 96819
Mailing Address:
YMCA Of Honolulu – Kalihi Branch
1335 Kalihi Street
Honolulu, HI 96819

2. CONTACT PERSON FOR MATTERS INVOLVING THIS APPLICATION:

Name ANTHONY PFALTZGRAFF
Title Sr. Vice President / Executive Director
Phone # (808) 848-2494
Fax # (808) 842-7736
e-mail apfaltzgraff@ymcahonolulu.org

3. TYPE OF BUSINESS ENTITY:

- NON PROFIT CORPORATION
- FOR PROFIT CORPORATION
- LIMITED LIABILITY COMPANY
- SOLE PROPRIETORSHIP/INDIVIDUAL

6. DESCRIPTIVE TITLE OF APPLICANT'S REQUEST:

WEED AND SEED STRATEGY – OPERATING FUNDS REQUESTED FOR ONE (1) YEAR.
YMCA OF HONOLULU TO SERVE AS FISCAL AGENT.

4. FEDERAL TAX ID #: _____

5. STATE TAX ID #: _____

7. AMOUNT OF STATE FUNDS REQUESTED:

FY 2012-2013: \$ 336,378.00

8. STATUS OF SERVICE DESCRIBED IN THIS REQUEST:

- NEW SERVICE (PRESENTLY DOES NOT EXIST)
- EXISTING SERVICE (PRESENTLY IN OPERATION)

SPECIFY THE AMOUNT BY SOURCES OF FUNDS AVAILABLE AT THE TIME OF THIS REQUEST:

STATE \$ _____
FEDERAL \$ _____
COUNTY \$ 125,000.00
PRIVATE/OTHER \$ _____

TYPE NAME & TITLE OF AUTHORIZED REPRESENTATIVE:

MICHAEL F. BRODERICK, PRESIDENT & CEO
NAME & TITLE

01/27/2012
DATE SIGNED

**APPLICATION FOR GRANTS AND SUBSIDIES
2012**

I. BACKGROUND AND SUMMARY

1. A brief description of the applicant's background

Weed and Seed is a program sponsored by the United States Attorney's Office in partnership with the YMCA of Honolulu. A comprehensive multi-agency approach to law enforcement, crime prevention and community revitalization, Weed and Seed currently operates in three areas on Oahu: Kalihi-Palama-Chinatown-Ala Moana-Sheridan-McCully ("Kalihi-Honolulu"); Waipahu; and Ewa-Ewa Beach. Today, "Weed and Seed" is a recognized "brand name" in Hawaii, having been in existence since 1998. It is a robust program, doing substantial good in our communities by bringing people and resources together to prevent and control crime and to improve the overall quality of life for those living or working in these communities.

Weed and Seed is a collaborative effort among law enforcement agencies at the federal, state, and county levels, social service agencies, private businesses, faith-based organizations, the public sector including city, state and federal departments, schools, nonprofit organizations, and residents to reclaim, restore, and rebuild communities. The four key elements of the Weed and Seed program are:

- (1) Law enforcement;
- (2) Community policing;
- (3) Prevention, intervention, and treatment programs; and
- (4) Neighborhood restoration.

See Appendix A for a description of these 4 key elements.

Weed and Seed works with local law enforcement to prevent, control, and reduce violent crime, drug abuse, and gang activity in targeted neighborhoods by "weeding" out the criminal element in the community. Community policing involves having police officers work closely with community residents to develop solutions to violent and drug-related crimes. "Seeding" the community involves collaboration among various human services organizations to implement prevention, intervention treatment, and neighborhood revitalization projects, programs, and activities.

2. The goals and objectives related to the request

This request proposes to establish a Weed and Seed program within the Department of Labor and Industrial Relations to carry out the following goal and objectives of Weed and Seed, and to perhaps expand its scope to include other communities throughout the island of Oahu and possibly the State of Hawaii.

The overall **goal** of Weed and Seed is to reduce violent and drug-related crime in designated high-crime communities in Hawaii through a comprehensive approach

intended to reduce and prevent crime and improve residents' overall quality of life. As a result, law-abiding citizens are able to live, work and raise their families in a safer and more prosperous environment.

The **primary objectives** of each Weed and Seed site are as follows:

- Development of a comprehensive community-based strategy to control and prevent violent crime, gang activity, drug trafficking, and drug-related crimes.
- Coordination of existing and new government and private-sector initiatives, criminal justice efforts, and human services, and concentration of those resources in designated neighborhoods to maximize their impact.
- Mobilization of community residents to: (1) assist law enforcement in identifying and removing violent offenders and drug traffickers from their neighborhoods; (2) assist human service agencies in identifying and responding to social service needs; and (3) elicit greater participation in community planning and decision making processes.

3 State the public purpose and need to be served.

The State has benefited greatly from the Weed and Seed program that is based on a two-pronged approach whereby: (1) law enforcement agencies and criminal justice officials cooperate with local residents to “**weed out**” criminal activity in the designated area; and (2) social service providers and economic revitalization efforts are introduced to “**seed**” the area, ensuring long-term positive changes and a higher quality of life for residents. Since the implementation of the program, crime in those areas has decreased significantly. The program's success warrants the continued operation of Weed and Seed in those communities, and envisions expanding it to other communities in the future.

4. Describe the target population to be served.

The target population would include those who currently live and/or work in the three designated Weed and Seed sites on Oahu (Kalihi-Honolulu; Waipahu; and Ewa-Ewa Beach), as well as those who live in other areas if the program is expanded to include other areas.

The Kalihi and Waipahu sites have over 51% of the population that are low-moderate income and 49% of Ewa's population are of low-moderate income. The Kalihi and Waipahu sites also have public housing projects within their areas, and all three sites have subsidized housing developments.

Using Department of Justice criteria, these sites were designated as having high crime, drug related crime, truancy, gang related crime, high unemployment, high number of persons under correctional supervision, public housing developments, limited economic activity and lack of organized groups.

5. Describe the geographic coverage.

The strategy will continue its work in the three designated Weed and Seed sites: Kalihi-Honolulu, Waipahu and Ewa-Ewa Beach. Indirectly, however, neighboring

communities will benefit from the model strategies and systems of the Weed and Seed program.

II. SERVICE SUMMARY AND OUTCOMES

1. Describe the scope of work, tasks and responsibilities.

Scope of work for Director

- Participate in Strategic Planning with the Resource Committee, chaired by US Attorney.
- Facilitate monthly meetings with all Weed and Seed officers and staff.
- Facilitate participation by City and County Prosecutors.
- Communication link between US Attorney and W&S staff.
- Serve as advocate for Weed and Seed Strategy.
- Foster community involvement in targeted areas.
- Coordinate projects with various agencies that involve all three sites.
- Spokesperson on behalf of W&S when necessary.
- Connect three sites for activities when appropriate.
- Pursue additional resources of funding for the W&S.

Scope of work for Site Coordinators

- Working with residents in the community to help identify their needs.
- Once needs are identified, working with service providers in the community and linking with residents to maximize coordination of existing resources and initiatives.
- Facilitating collaboration among agencies so they will be more responsive to the needs of the residents. Engaging all members of the community. -Attending community events and meetings to be informed on what is happening in the community. -Supporting economic initiatives. -Inventory the resources and programs in the designated neighborhood and continually update the inventory.
- Maintain contact with the community by meeting with residents and attending meetings and events organized by community groups to be informed of the needs of the residents.
- Participation in these meetings may require the Site Coordinator to facilitate and mediate between community members.
- Community meetings will require interacting and building relationships with those of different cultures.
- Community meetings will also require interacting with political offices. Building and maintaining partnerships with these offices will be necessary.
- The Site Coordinator may be required to speak in front of groups of varying sizes.
- Delegation skills and follow-up skills will be necessary when working with the residents and community organizations.
- Maintain a positive relationship with community agencies and businesses to facilitate communication among agencies in the community to avoid duplication of services, to support programs initiated by community groups, and to support good working relationships between the agencies and residents.

- Provide support to enhance successful established programs and coordinate with Weed and Seed police officers to develop intervention and prevention programs.
- Prepare monthly reports on site activities for the Weed and Seed Steering Committee, which are required under the Weed and Seed Grant.
- Provide staff support to the Weed and Seed Committees in the Site.
- Build capacity of Community and assist in developing a long-range sustainability plan -Utilizing organizational skills for record keeping, monitoring Weed and Seed partners, follow-up, and keeping track of various timelines and deadlines.
- Develop resources and a sustainability infra-structure for "seeding" efforts.
- Evaluation systems will be required. Fundraising skills may be utilized.
- Other duties as assigned.

2. Projected annual timeline for accomplishing the results or outcomes of the service.

See Appendix B.

3. Description of quality assurance and evaluation plans for the request; how the applicant plans to monitor, evaluate and improve their results.

Weed and Seed of Hawaii's programs will be evaluated by an independent academic professional from the University of Hawaii's Public Administration Program and Public Policy Center.

Additionally, day-to-day progress of each site will be measured and evaluated through Project Management tools exercised by the Executive Director.

The program, in its entirety, will be accountable and responsible to the "Weed and Seed Site-Wide Steering Committee", made up of volunteer community members.

4. Measures of effectiveness that will be reported to the State agency through which grant funds are appropriated (the expending agency).

The following are measures of effectiveness to be reported to the expending agency. Figures shown are for the three sites combined.

Law Enforcement

- 3 businesses that conduct gambling activity identified
- 5 businesses that conduct prostitution identified
- 2 business that conduct drug trafficking
- 2 meetings between ICE, RICO, and other governmental agencies
- 3 walk-through inspections/sweeps (Massage Parlors)
- 10 Truancy sweeps
- 6 Warrant sweeps

Community Policing

- Increase visibility of Citizen's Patrol Groups by using easily identifiable standard Citizen's Patrol T-Shirts.
- Connect Citizen's Patrol groups and NSW's to property managers and legal agents of properties to alleviate graffiti and illegal activity issues
- Organize & Hold National Night Out Celebration
- Currently 938 involved in Community Policing - increase by 10%
- Currently 51 Neighborhood Security Watch Groups - increase by 10%
- 400 people will be in attendance at the National Night Out Celebration held in the summer of 2011.

Prevention, Intervention, and Treatment

- 6 Community events
- 6 Anti-drug presentations
- 12 sessions of mentoring programs with teens and police officers
- 1 Culinary Arts Class with teens and police officers
- 10 sessions of life skills topics with Federal Bureau of Investigation (FBI)
- 6 sessions with teens on "Don't Drink & Drive/Drive Safe" campaign

Neighborhood Restoration

- 500 volunteer participants in Neighborhood Restoration projects and activities
- 6 schools or youth groups participate in clean-ups
- 5 businesses will be approached by leaders, involved in the Neighborhood Restoration effort, to financially support or donate supplies for restoration efforts in the site.
- 8 Neighborhood Restoration Projects

III. FINANCIAL

Budget

1. **Budget that details the cost of the request.**
(See Appendix C.)
2. **Anticipated quarterly funding requests for FY 2012-2013.**

Quarter 1	Quarter 2	Quarter 3	Quarter 4	Total Grant
\$91,000	\$91,500	\$91,500	\$91,500	\$366,000

3. Listing of all other sources of funding that we are trying to obtain for FY 2012-2013.

The following are sources of funding that Weed and Seed will try to obtain for FY 2012-13.

- HEI - \$2,000.00
- Waipahu LLC, dba Meridian Waipahu - \$1,200
- Waipahu United Church of Christ - \$300
- JT's Inflatables - \$100
- The Gas Company - \$1,000
- Hawaii Community Foundation, Ewa Beach Community Fund - \$5,000
- Campbell Foundation- \$25,000
- Target \$5,000.00 (for National Night Out)
- Grace Pacific -\$1,000.00
- DR Horton \$5,000
- Haseko (Hoakalei)- \$2,500.00 (\$1,000 from Haseko, \$1,500 from Hoakalei)
- Gentry Homes - \$1,000
- AllState Foundation - \$25,000
- McDonalds of Ewa Beach - \$5,000
- Individual and miscellaneous donors - \$1,000
- Walmart - \$2,000
- Hawaii Police Athletic Federation - \$2,000
- MJ888 Productions - \$2,000
- Eki Cyclery - \$100
- Kmart – \$1,000

- 4. Listing of all State and Federal tax credits granted within the prior three years. Listing of all State and Federal tax credits for which we have applied and or anticipate applying for pertaining to any capital project, if applicable.**
Not applicable.

IV. EXPERIENCE AND CAPABILITY

A. Necessary Skills and Experience

Three site coordinators would be funded through this request. All three have the necessary skills, abilities, knowledge of, and experience relating to the request, and have worked with the community to plan, organize, implement, and leverage resources to carry out the following projects/programs, each of which has been in existence for at least three years.

- National Night Out - 500 people attend this annual celebration of "Taking Back Our Community" and keeping our neighborhood safe.
- Real and Powerful (RAP) and Teen RAP – Under these programs, police officers mentor teens.
- Youth Patrol - Police officers teach teens to keep their community safe.

- Culinary Arts - Police officers work with a guest chef in teaching teens life skills through a summer cooking program.
- Drive Safe 4 Ewa – This community outreach program involves the community working with police officers in a "Don't Drink and Drive" campaign.
- Urban 808 – Police officers are involved with youth and graphic artist(s) in doing street art instead of negative graffiti.

Resumes of the site coordinators are included as Attachment D. As a preface, please note that all have been involved with Weed and Seed, respective to their capacities, for several years.

B. Facilities

Description of applicant's facilities and adequacy in relation to the request. Also describe how the facilities meet ADA requirements, as applicable.

The following are the addresses of the applicant's office and meeting locations for the three Weed and Seed sites. All of the facilities are ADA compliant. Floor plans of each of these places can be made available upon request.

Kalihi-Honolulu Site

The Site Coordinator's office and the meeting location for the Steering Committee are located at Kalakaua Homes, a public housing project of the State of Hawaii. The addresses are as follows:

1. Office Address where the Weed & Seed Coordinator is located: 1540 Haka Drive, Honolulu, Hawaii 96817 (Kalakaua Homes).
2. Meeting Place for the Steering Committee is Community Center Kalakaua Homes; 1540 Haka Drive, Honolulu, Hawaii 96817

Waipahu Site

The Site Coordinator's office is located at the Leeward YMCA in Waipahu. The Steering Committee also meets at the Leeward YMCA in its Teen Center meeting room.

1. Office Address where the Weed & Seed Coordinator is located is 94-440 Mokuola Street, Waipahu, Hawaii 96797
2. Meeting Place for the Steering Committee, every third Tuesday, is at the Leeward YMCA Teen Center 2 – 94-440 Mokuola Street, Waipahu, Hawaii 96797

Ewa -Ewa Beach Site

The Site Coordinator's office is located in the Hale Pono Boys and Girls Club in Ewa Beach, which also serves as the Safe Haven for the Ewa Weed and Seed site. The Steering Committee meets monthly at the Kapolei Police Station.

1. Office address is where Site Coordinator is located: 91-884 Fort Weaver Road, Suite A, Ewa Beach, Hawaii 96706 (Hale Pono Boys and Girls Club in Ewa Beach)
2. Meeting Place for the Steering Committee , every third Thursday, is at the Kapolei Police Station - 1100 Kamokila Blvd, Kapolei, Hawaii 96707.

VI. PERSONNEL: PROJECT ORGANIZATION AND STAFFING

A. Proposed Staffing, Staff Qualifications, Supervision and Training

Note: Although the Weed and Seed Program is currently staffed with a Director and 3 Site Coordinators, the Director's position is not included in this grant request.

1. Position: Weed and Seed Director

Status: Full time

Reports to: US Attorney

Basic Function: To oversee the Weed and Seed strategy on the Island of Oahu. This position will be responsible coordinating the resources between the three Weed and Seed sites.

Job Duties:

- Communication link between US Attorney and W&S staff.
- Foster community involvement in targeted areas.
- Coordinate projects with various agencies that involve all three sites.
- Connect three sites for activities when appropriate.
- Pursue additional resources of funding for the W&S.

2. Position: Weed and Seed Site Coordinator

Duties and Responsibilities: Each Site Coordinator is assigned to a designated Site and is supervised by the Weed and Seed Program Supervisor. The Site Coordinators provide program coordination for each respective Weed and Seed site.

The Site Coordinator must be a "self-starter" and able to work independently, as well as in groups. An attitude of compassion for low-income and impoverished residents is needed - balanced with an ability to teach them to help themselves versus having others do things for them. The Site Coordinators help to ensure

that the scope of the strategy is carried out. This includes:

- Working with residents in the community to help identify their needs.
- Once needs are identified, working with service providers in the community and linking with residents to maximize coordination of existing resources and initiatives.
- Facilitating collaboration among agencies so they will be more responsive to the needs of the residents. Engaging all members of the community.
- Attending community events and meetings to be informed on what is happening in the community.
- Supporting economic initiatives.

Some of the major duties and responsibilities of the Site Coordinators include:

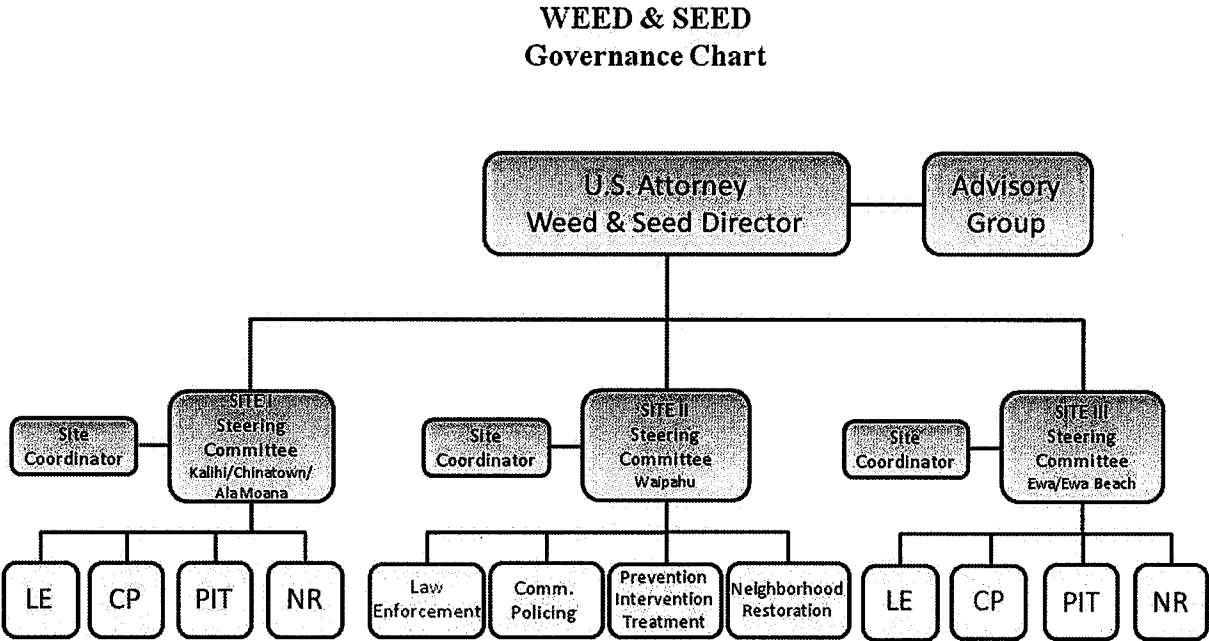
1. Inventorying the resources and programs in the designated neighborhood and continually update the inventory.
2. Maintaining contact with the community by meeting with residents and attending meetings and events organized by community groups to be informed of the needs of the residents.
 - Participation in these meetings may require the Site Coordinator to facilitate and mediate between community members.
 - Community meetings will require interacting and building relationships with those of different cultures.
 - Community meetings will also require interacting with political offices. Building and maintaining partnerships with these offices will be necessary.
 - The Site Coordinator may be required to speak in front of groups of varying sizes.
 - Delegation skills and follow-up skills will be necessary when working with the residents and community organizations.
3. Maintaining a positive relationship with community agencies and businesses to facilitate communication among agencies in the community to avoid duplication of services, to support programs initiated by community groups, and to support good working relationships between the agencies and residents.
4. Providing support to enhance successful established programs and coordinate with Weed and Seed police officers to develop intervention and prevention programs.
5. Preparing monthly reports on site activities for the Weed and Seed Steering Committee, which are required under the Weed and Seed Grant.
6. Providing staff support to the Weed and Seed Committees in the Site.
7. Building the capacity of the community and assisting in developing a long-range sustainability plan.
8. Utilizing organizational skills for record keeping, monitoring Weed and Seed partners, and following up.
9. Keeping track of various timelines and deadlines.
10. Developing resources and a sustainability infra-structure for "seeding" efforts/
11. Evaluation systems will be required. Fundraising skills may be utilized.

Minimum Qualifications: Site Coordinators are required to have at least two years of

progressively responsible work experience in community development programs or program for youth and other alienated groups in the community; ability to plan, organize, implement, and evaluate program activities and events; ability to work with different community constituencies including, youth, the disadvantaged, community leaders, social service providers, law enforcement personnel, and ability to understand and follow complex oral and written instructions; and ability to prepare routine reports. An equivalent combination of education and/or experience is also acceptable.

Desirable Qualifications: Four year college degree in Human Services field. Experience in working with youth or other at risk groups. Experience in identifying resources in a community and linking at risk groups to those resources.

B. Organization Chart



VI. OTHER

A. Pending litigation to which Weed and Seed is a party.

Not applicable.

B. Licensure or Accreditation

Not applicable.

FOUR COMPONENTS OF THE WEED AND SEED PROGRAM

The Weed and Seed strategy is a multilevel strategic plan that includes four basic components.

1. LAW ENFORCEMENT

The law enforcement component is designated to weed out crime and violence, particularly violent crime, gang activity, drug trafficking, and drug-related crime. Efforts are directed mainly at most serious and visible criminals in the designated area. Reducing both crime and citizen fear returns hope to residents living in distressed neighborhoods and sets the stage for community revitalization.

In most Weed and Seed sites, crime suppression activities are undertaken by joint task forces that represent a collaboration of law enforcement agencies from all levels of government and benefit from the various resources each agency brings to the effort. Suppression activities include repeat-offender programs, gun abatement, targeted patrols, intensified drug investigations, and targeted prosecutions. Other law enforcement tactics involve various aspects of the criminal justice system, such as a community courts, victim-witness protection and services, and offender reentry programs.

2. COMMUNITY POLICING

Community policing supports intensive law enforcement operations and serves as a bridge to the seeding components of Weed and Seed. Community policing embraces two key concepts: community engagement and problem solving. Under this model of policing, officers establish an ongoing dialog with community residents to solve crime problems through a systematic process that addresses the underlying causes of crime. Community policing strategies foster a sense of responsibility within the community for solving crime problems, focus on increasing police visibility, and develop cooperative relationships between police officers and residents. Examples of community policing activities include foot and bicycle patrols, police mini-stations, victim referrals to support services, nuisance abatement programs, and police athletic leagues.

Community mobilization is also important in community policing activities. Programs that encourage community participation and help prevent crime include neighborhood watches, citizen marches, and rallies, prayer services, drug-free zones, and graffiti removal.

3. PREVENTION, INTERVENTION, AND TREATMENT

The prevention, intervention, and treatment component of the Weed and Seed strategy focuses on neighborhood efforts to enhance protective factors while reducing risks, thus promoting wholesome behavior that can lead to good health, well-being, and personal success.

- Risk factors such as economic deprivation, family management problems, and early academic failure increase the likelihood that a child will develop health and behavior problems in adolescence.
- Protective factors such as positive individual characteristics, bonding, healthy beliefs, and clear standards set by parents and society reduce the impact of risk factors on children.

The prevention, intervention, and treatment component concentrates an array of human services on the designated community to create an environment in which crime and violence cannot thrive. Links among law enforcement and social service agencies, the private sector, and the community must be strengthened to improve the overall quality of services to residents.

Safe Havens are important elements of the prevention, intervention, and treatment component. They provide a mechanism for organizing and delivering an array of youth-and-adult-oriented services in a multi-service setting such as a school or community center. All Weed and Seed programs include community-based services such as childcare, substance abuse treatment, mental health services, family counseling, and medical care.

4. NEIGHBORHOOD RESTORATION

The fourth component of Weed and Seed focuses on improving and revitalizing the economic and social conditions of the designated communities through neighborhood restoration strategies. Expanding the economic vitality of a community helps to keep crime and disorder from thriving. As with the other Weed and Seed components, neighborhood restoration can be achieved only by coordinating federal, state, county, and private-sector resources. Strategies focus on economic development, employment opportunities for residents, and improvements to the housing stock and physical environment of the neighborhood.

APPENDIX B

PROJECTED ANNUAL TIMELINE FOR ACCOMPLISHING THE RESULTS OR OUTCOMES OF THE WEED AND SEED PROGRAM

Activities and Major Tasks	(Position)	Month												
		1	2	3	4	5	6	7	8	9	10	11	12	
Kalihi-Palama-Chinatown-Downtown-Kaheka-Sheridan-Waipahu-Ewa-Ewa Beach														
Steering Committee Meetings, Community Coalition, Collaborative Partner, Sub-Committee Meeting	Site Coordinator	X	X	X	X	X	X	X	X	X	X	X	X	X
Address community concerns for violence, crime and fear of crime.	HPD and Site Coordinator	X	X	X	X	X	X	X	X	X	X	X	X	X
Increase participation in Community Policing programs	HPD and Site Coordinator	X	X	X	X	X	X	X	X	X	X	X	X	X
Increase participation in Community Policing programs (outreach, recruit, etc.)	HPD and Site Coordinator	X	X	X	X	X	X	X	X	X	X	X	X	X
Conduct investigations for drug trafficking	HPD	X	X	X	X	X	X	X	X	X	X	X	X	X
Address underage drinking (sweeps, etc.)	HPD	X	X	X	X	X	X	X	X	X	X	X	X	X
Address Truancy issues and conduct sweeps	HPD	X	X	X	X	X	X	X	X	X	X	X	X	X
Traffic Awareness Campaign with schools, businesses and residents	HPD and Site Coordinator	X		X	X	X	X	X					X	X
Increase participation in Community Policing programs	HPD and Site Coordinator	X	X	X	X	X	X	X	X	X	X	X	X	X
Maintain safe haven and other physical focal points for service delivery	Site Coordinator	X	X	X	X	X	X	X	X	X	X	X	X	X
Basketball & Volleyball, 5k Run (tournaments, intramurals)	HPD and Site Coordinator	X		X		X		X				X	X	X
Maintain safe haven and other physical focal points for service delivery	Site Coordinator	X	X	X										
Various Community Events that provide social services, resources, education, health awareness, life-skills, and alternative activities for youth and families.	Site Coordinator	X	X	X	X	X		X	X	X			X	X
Community Beautification (Graffiti Paint-Out and Neighborhood Clean-Up)	Site Coordinator	X		X		X		X		X			X	
Develop communication venues-newsletter, print media (emails, facebook page etc.)	Site Coordinator	X	X	X	X	X	X	X	X	X	X	X	X	X
Various afterschool and seasonal programs for youth (Culinary Arts, Jr. Golf, Jr. Bowling, Oceansport, Teen Rap)	HPD and Site Coordinator	X	X	X	X	X	X	X	X	X	X	X	X	X
Conduct investigations for drug trafficking	HPD	X	X	X	X	X	X	X	X	X	X	X	X	X
Traffic Awareness Campaign with schools, businesses and residents	HPD and Site Coordinator	X		X	X	X						X	X	X
Various afterschool and seasonal programs for youth (Culinary Arts, Jr. Golf, Jr. Bowling, Oceansport, Teen Rap)	HPD and Site Coordinator	X	X	X	X	X	X	X	X	X	X	X	X	X

PROJECTED ANNUAL TIMELINE FOR ACCOMPLISHING THE RESULTS OR OUTCOMES OF THE WEED AND SEED PROGRAM

Activities and Major Tasks	(Position)	Month												
		1	2	3	4	5	6	7	8	9	10	11	12	
Kalihi-Palama-Chinatown-Downtown-Kaheka-Sheridan-Waipahu-Ewa-Ewa Beach														
Steering Committee Meetings, Community Coalition, Collaborative Partner, Sub-Committee Meeting	Site Coordinator	X	X	X	X	X	X	X	X	X	X	X	X	X
Support and participate at adopted school activities	HPD and Site Coordinator	X	X	X	X	X					X	X		
Support Community Based Development Organization (meetings/events) Waipahu & Ewa site	Site Coordinator	X	X	X	X	X	X	X	X	X	X	X	X	X
Maintain and support existing programs, promote interagency referrals/partnerships	HPD and Site Coordinator	X	X	X	X	X	X	X	X	X	X	X	X	X

APPENDIX C

BUDGET FORMS

BUDGET REQUEST BY SOURCE OF FUNDS
(Period: July 1, 2012 to June 30, 2013)

Applicant: YMCA Of Honolulu - Kalihi Branch - Weed & Seed Program

BUDGET CATEGORIES	Total State Funds Requested (a)	(b)	(c)	(d)
A. PERSONNEL COST				
1. Salaries	129,042			
2. Payroll Taxes & Assessments	14,053			
3. Fringe Benefits	20,364			
TOTAL PERSONNEL COST	163,459			
B. OTHER CURRENT EXPENSES				
1. Airfare, Inter-Island				
2. Insurance	3,135			
3. Lease/Rental of Equipment				
4. Lease/Rental of Space				
5. Staff Training	600			
6. Supplies	10,800			
7. Telecommunication	2,184			
8. Utilities				
9. Airfare, Out-Of-State	8,100			
10. Audit Services	1,960			
11. Contractual Services Subcontracts (HPD Overtime & UH Student Evaluations)	89,400			
12. Mileage	2,700			
13. Postage, Freight & Delivery	6,000			
14. Publication & Printing	9,000			
15. Subsistence / Per Diem	8,460			
16. Indirect Cost	30,580			
17				
18				
19				
20				
TOTAL OTHER CURRENT EXPENSES	172,919			
C. EQUIPMENT PURCHASES	0			
D. MOTOR VEHICLE PURCHASES	0			
E. CAPITAL	0			
TOTAL (A+B+C+D+E)	336,378			
SOURCES OF FUNDING		Budget Prepared By:		
(a) Total State Funds Requested	336,378	Stacey K. Utu	(808) 848-2494	
(b)		Name (Please type or print)	Phone	
(c)		Signature of Authorized Official	Date	
TOTAL BUDGET	336,378	Michael Broderick, President & CEO		
		Name and Title (Please type or print)		

BUDGET JUSTIFICATION PERSONNEL - SALARIES AND WAGES

Applicant: YMCA Of Honolulu - Kalihi Branch

Period: July 1, 2012 to June 30, 2013

POSITION TITLE	FULL TIME EQUIVALENT	ANNUAL SALARY A	% OF TIME ALLOCATED TO GRANT REQUEST B	TOTAL STATE FUNDS REQUESTED (A x B)
Weed & Seed - Project Coordinator / Ewa Beach Site Coordinator	1	\$44,237.29	100.00%	\$ 44,237.29
Weed & Seed - Waipahu Site Coordinator	1	\$43,034.25	100.00%	\$ 43,034.25
Weed & Seed - Kalihi Site Coordinator	1	\$41,769.96	100.00%	\$ 41,769.96
				\$ -
				\$ -
				\$ -
				\$ -
				\$ -
				\$ -
				\$ -
				\$ -
				\$ -
				\$ -
				\$ -
				\$ -
				\$ -
TOTAL:				129,041.50
JUSTIFICATION/COMMENTS:				
Project Coordinator provides program oversight, monitors delivery of services, program goals and contractual requirements. Site Coordinator positions provide direct services to program participants and works collaboratively with Weed & Seed community partners.				

BUDGET JUSTIFICATION - EQUIPMENT AND MOTOR VEHICLES

Applicant: YMCA Of Honolulu - Kalihi Branch - Weed & Seed Program Period: July 1, 2012 to June 30, 2013

DESCRIPTION EQUIPMENT	NO. OF ITEMS	COST PER ITEM	TOTAL COST	TOTAL BUDGETED
			\$ -	
			\$ -	
			\$ -	
			\$ -	
			\$ -	
TOTAL:				0
JUSTIFICATION/COMMENTS:				

DESCRIPTION OF MOTOR VEHICLE	NO. OF VEHICLES	COST PER VEHICLE	TOTAL COST	TOTAL BUDGETED
			\$ -	
			\$ -	
			\$ -	
			\$ -	
			\$ -	
TOTAL:				0
JUSTIFICATION/COMMENTS:				

**BUDGET JUSTIFICATION
CAPITAL PROJECT DETAILS**

Applicant: YMCA Of Honolulu - Kalihi Branch - Weed & Seed Program

Period: July 1, 2012 to June 30, 2013

FUNDING AMOUNT REQUESTED						
TOTAL PROJECT COST	ALL SOURCES OF FUNDS RECEIVED IN PRIOR YEARS		STATE FUNDS REQUESTED	OF FUNDS REQUESTED	FUNDING REQUIRED IN SUCCEEDING YEARS	
	FY: 2009-2010	FY: 2010-2011	FY:2011-2012	FY:2011-2012	FY:2012-2013	FY:2013-2014
PLANS						
LAND ACQUISITION						
DESIGN						
CONSTRUCTION						
EQUIPMENT	0	0	3600	0	0	0
TOTAL:			3,600			
JUSTIFICATION/COMMENTS:						

APPENDIX D

RESUMES OF SITE COORDINATORS

GALE TSUYO BRACEROS
1726 Komo Mai Drive
Pearl City, Hawaii 96782
Home: 808-744-7610 Mobile: 808-232-6437

Experience: YMCA of Honolulu
Kalihi Branch
Weed and Seed
December 14, 2009 – present
Present Position: Program Supervisor
Supervisor: Kyle Ishizaka

Duties: Oversee the Weed and Seed Strategy for all three sites on Oahu, including the coordination of resources among the three Weed and Seed sites and serving as the official liaison between site coordinators and administrative branches of Weed and Seed.

Job duties are to:

- Provide resources and assistance to site coordinators.
- Coordinate projects with various agencies that involve all three sites.
- Connect three sites for activities when appropriate.
- Serve as advocate for Weed and Seed strategy.
- Serve as communication link between U.S. Attorney and Weed and Seed staff.
- Oversee site coordinators' daily operations.
- Oversee budgets and grants for all three sites.

YMCA of Honolulu
Weed & Seed
May 2, 2005 – Present
Present Position: Site Coordinator
Supervisor: Kyle Ishizaka

Duties: To coordinate opportunities for residents and businesses to work cooperatively in taking control of their neighborhoods for a cleaner, safer community that nurtures healthy family living and work environments. This effort includes developing collaborative, synergistic working relationships between social agencies, businesses, faith-based counsels, residents, and other community organizations. The focus is to facilitate positive community action, coordinate community communications, and serve as a liaison between the community, as a whole, and the Honolulu Police Department.

- Work with residents, businesses and service providers in the community to help identify problems and needs.
- Conduct community surveys in focus areas; collect data to identify the focus areas; establish a plan of action with sub-committees.
- Attend monthly Neighborhood Board Meetings, reporting upcoming events and answering any community concerns.

- Receive complaints and concerns, reporting illegal activities from the community to HPD for timely follow up.
- Attend Association meetings for 'Ewa/Ewa Beach area, conducting Weed & Seed presentations and providing basic training.
- Facilitate Weed & Seed Committee meetings (Neighborhood Restoration Committee, Economic Development Committee, Legislature Committee and Steering Committee).
- Participate in community events, providing resources and promoting active ties relating to Weed & Seed's strategies
- Facilitate and organize community events and projects with residents, businesses and service providers (Neighborhood Restoration Projects, Community Policing events and activities, Prevention, Intervention and Treatment events)
- Build active partnerships, in and out of the community, in support of community initiatives.
- Attend quarterly meetings at the US Attorney Office, providing site review reports to the U.S. Attorney and serving as a liaison between site coordinators and U.S. Attorney.
- Collect crime stats and monthly weeding activities from Weed & Seed Detail to include in monthly reports to U.S. Attorney Office.
- Keep accurate stats and data, as per Federal Government requirements.
- Complete federal reports: U.S. DOJ progress report, Government Performance and Result Act (GPRA) Report.
- Research stats and data required on all federal reports.
- Monitor all federal, state and city grants for assigned site.

Accomplishments: Nov. 2005 YMCA Group Work Training- Certificate of Completion

April 2007 Community Capacity Development Offices (DOJ):
Weed & Seed Honolulu chosen one of 8 Best Practice Weed & Seed site nationally

May 2007 Kapolei Outstanding Achievement Award (KOA) for
Community Service-Organization

Oct. 2007 McGruff's National Crime Prevention Award of
Excellence-Crime Prevention Program of the Year

Other Experience: Honolulu Community Action Program, Inc.
O'ahu Head Start June 1, 1987 to April 30, 2005
Position Held: Family Advocate Supervisor: Ellen Taoka

Duties: As Family Advocate, my job was to assist families with resources, linking them with community opportunities, as well as with other agencies relevant to the individual needs. The work with each individual included assisting them in establishing their

short-term and long-term goals; helping them to realize their strengths as well as their needs; developing and facilitating parent workshops and training on a monthly basis.

Other Responsibilities:

A major portion of this job was to work consistently on developing productive relationships with other agencies in the community, effectively utilizing their services to assist families in crisis. To achieve this, the building of team work was essential: collaboration and cooperation with other team members, teaching staff and other community specialists (state, federal, and private agencies).

- Coordinate bi-annual Health Fairs for Central and Waipahu/'Ewa districts.
- Organized weekly parent workshop/trainings for families
- Comprehensive quarterly reports for State funded sites.
- Work with agencies to meet building inspection for licensing for all new child care sites.
- Required to do two home visits with each assigned sites (20 families per site, total of 80 families)
- Work with other agencies to provide quality resources and services, establish a Individual Action Plan with each family, monitor plan and do necessary follow ups.

Special

Assignments:

Job Corp Head Start 2001 – 2003

Assigned to Job Corp Head Start to lead the assessment, evaluation and reorganization process necessary for them to meet federal compliances.

'Ewa Head Start 1998 – 2001

Assigned to 'Ewa Head Start to do an assessment/evaluation/ reorganization necessary for them to meet federal requirements. In addition, worked to facilitate efforts to:

- strengthen working partnership and relationship with Hale Kipa, Easter Seals and Child and Family Services
- complete necessary federal, city and state requirements needed to obtain licensing.

Accomplishments:

Early Head Start 2000 – 2003

First to implement Early Head Start for teen parents at James Campbell High School, Waipahu High School, Mililani High School and Leileihua High School: opened childcare centers; organized and facilitated teen parenting workshops.

Education:

YMCA/Group Work (2 credits) Nov. 2005
YMCA of Honolulu

University of Alameda
Associates in Social Services June 17, 2005

Honolulu Community College 2002- 2003

Completing Family Advocate Certification (A Federal Program)

Courses: Human Development/FAMR 250

Domestic Violence/Dynamics of Family Violence

FAMR 133

Working with People, FAMR 296

Family Dynamics/Interviewing Difficult Families

SOSER 21

Kapiolani Community College 1975

Certified Nursing Assistant

Licensed Practical Nurse 1977

Waianae High School 1971-1975

High School Diploma

Training:

Child Abuse/Neglect

Second Step Program

(Selected to attend training to develop parenting classes with parents).

Drug Awareness/Recognizing the Problem

Working with Micronesians/Learning their culture

Federal Grant Application Training - 2007

Community Leadership Training- 2006

Helping Build Safer Communities- 2007

Community Capacity Builders Forum – 2009

Grassroots Leadership Development – 2009

Strategic Thinking and Planning – 2009

Conferences/

Training:

Community Capacity Development Office (U.S. Department of Justice): August 22-25, 2005 – Community building and sustainability

CCDO – March 27 – 30, 2006 – Strategy Development Training

NeighborWorks America – October 12 – 15, 2006 – Plant a Seed of Change and Grow a Better Neighborhood

NeighborWorks America- May 6-8, 2009

- Building Powerful Community Partnership
- Grassroots Leadership Development
- Strategic Thinking and Planning

CCDO Implementation and Strategy Training – 2010

Community Leadership Institute- Neighbor Works Training-2011

National Crime Prevention Council- Gang Violence Awareness

Prevention Training- October 2011

References can be provided upon request.

MARK KAHELE PORTER
700 Richards St. #1605
Honolulu, Hawai'i 96813
808-277-2132

Objective

To take a leading role in the coordination “weeding” and “seeding” efforts in Weed & Seed’s site 1 community. To help increase the presence of positive resources and activities for youth and families. To build and maintain lasting and productive working relationships with community leaders, residents, churches, schools, service providers, police, parks and recreation, public housing authorities and businesses. To mobilize the community to take positive action in their own neighborhood.

Education

B.A. degree in Journalism, 2000, University of Hawai'i at Manoa
Proficient in the Hawaiian language

Employment

Site Coordinator, April 2, 2005 – present, Weed & Seed (Kalihi-Palama, Chinatown)
Takes a leading role in implementing the Department of Justice’s community-based crime prevention initiative in some of Honolulu’s most impoverished communities. Works with law enforcement and other community stakeholders to address community safety and quality of life issues. Builds empowerment amongst community residents so that they take ownership of the areas they live in. Works with the community to identify, plan, and implement projects and activities that they feel will benefit their neighborhoods. Ensures that the four components of the Weed & Seed strategy; Neighborhood Restoration, Prevention/Intervention/Treatment, Community Policing, and Law Enforcement; are maintained and/or moving forward.

Prevention Specialist, Oct. 2, 2002 to April 1, 2005, Coalition for a Drug-Free Hawaii Established a Kalihi Valley Collaborative (KVC) composed of community representatives to address violence and prevent substance abuse. Worked collaboratively with KVC members to develop a community needs assessment and plan of action to address and prevent violence and substance abuse in the community. Facilitated community meetings and coordinated various community events. Successfully implemented the Second Step violence prevention program to 3 cohorts of Ka`ewai Elementary School 5th graders and their parents.

Prevention Specialist, Oct. 2, 2000 to Oct. 1, 2002, Coalition for a Drug-Free Hawaii
Worked to implement the Strengthening Hawai'i Families program in Royal and Ka`a`awa Elementary Schools, the Waimanalo community, and Mayor Wright Homes by carrying out and taking on various tasks, roles and responsibilities. Worked as part of “The Family Partners” in Mayor Wright Homes to plan, organize and carry out community events for residents of MWH and the Kalihi-Palama district. Worked in partnership with various other service provider agencies, schools, community leaders, and youth to educate and bring awareness to several different communities on O`ahu. Worked as part of the Ko`olauloa Community Partnership to plan and carry out a community event that fulfilled its goal in joining people, from all of Ko`olauloa’s smaller districts, to work together and pool each others’ resources.

Contributing Writer, 2000, Ka Leo Hawaii
Newsletter Editor, 2000, Kalihi YMCA

Data Entry, 1999 – 2000, Kalihi YMCA

Aquatics Instructor/Lifeguard, 1998 – 2000, Kalihi YMCA

Facilitator, 1998 – 1999, Coalition for a Drug-Free Hawaii

Worked with a team of facilitators to present the Strengthening Hawai'i Families curriculum to its participants at the Royal and Kapalama Elementary School sites. Reinforced family and cultural values using Hawaiian concepts as reference points. Guided families through exercises. Introduced and helped families familiarize themselves with healthy and productive problem-solving techniques.

Volunteer, 1996 – 1998, Kalihi YMCA

Assisted in the administration office.

Professional Musician, 1989 – 1996

Played guitar and sang professionally in a band. Opening act for concerts held at Blaisdell Arena, Aloha Tower, Kualoa Ranch, and the Waikiki Shell.

1989 – 1996

Graphic Artist/Pressman, Printa-Quick

Administrative Assistant, Maluhia Long Term Health Care Facility

Greenhouse Assistant, Lyon Arboretum

Kitchen Help, Orson's Chowderette

Painter, Cove Expo & Design

Courtesy Clerk, Safeway

References upon request.

LORRIE W. KANNO

P. O. Box 971477

Waipahu HI 96797

Phone: 808-626-2879

EDUCATION Bachelor of Arts – Social Work and Bachelor of Arts – Liberal Arts: Behavioral Science, 1989
CONCORDIA UNIVERSITY, Portland, Oregon

WORK EXPERIENCE Weed & Seed Coordinator, Site II – July 2009 to present
KALIHI YMCA, Honolulu, Hawai'i

Responsible for maintaining an inventory of resources and programs in the designated neighborhoods, maintaining contact with the community by meeting with the residents and attending meetings and events organized by community groups to be informed of the needs of the residents, maintaining positive relationships with community agencies and businesses to facilitate communication among agencies in the community to avoid duplication of services, to support programs initiated by community groups, and to support good working relationships between agencies and residents, providing support to enhance successful established programs and coordinate with Weed & Seed police officers to develop intervention and prevention programs, preparing monthly reports on site activities for the Weed & Seed Steering Committee, providing staff support to the Weed & Seed Committees in the Site, building capacity of Community and assist in developing a long-range sustainability plan, utilizing organizational skills for record keeping, monitoring Weed & Seed partners, follow-up, and keeping track of various timelines and deadlines and developing resources and a sustainability infra-structure for "seeding" efforts.

Rural Youth Program Director/Outreach Services Supervisor – October 2004 to June 2009

KALIHI YMCA, Honolulu, Hawai'i

Responsible for the management of daily operations of sites from Waipahu to Waianae. Serves as a liaison between schools, service providers, churches, and families. Responsible for recordkeeping and site reports. Provides direct supervision to staff and monitors progress of program participants. Works Facilitates staff meetings/trainings and participates in Association personnel trainings/meetings and community activities/projects.

Senior Program Director – June 1994 to September 2004

YMCA COMMUNITIES IN SCHOOLS OF HAWAII'I PROJECT, Waipahu, Hawai'i

Responsible for the management of daily operations of site. Serves as a liaison between schools, service providers, churches, and families. Responsible for overall records and reports of various programs to funding sources; monitoring and reporting of select clientele. Responsible for the coordination of services for students and families, developing collaborations between service providers, bridging the community with resources, facilitation of all programs, production of quarterly newsletters, training in the 'Ohana Management System and supervision of all staff and volunteers. Works closely with Executive Director and other Program staff in

writing grants; facilitating staff meetings/trainings, participating in Association personnel trainings/meetings and community activities/projects.

**COMMUNITY
SERVICE**

Scholarship Committee Member – July 2011 to present

LEAHI SOCCER CLUB, Honolulu, Hawai'i

Responsible for selection of scholarship recipients twice a year

Parent Volunteer – August 2004 to present

KAMEHAMEHA SCHOOLS CLASS OF 2017 & 2019, Honolulu, Hawai'i

Assist with planning events for the families and students of KS Class of 2017 and 2019.

Volunteer Soccer Coach – January 2006 to March 2009

AYSO WEST OAHU REGION 769, Waipahu, Hawai'i

Responsible for coaching boys and girls basic soccer skills in the U5, U6, and U8 age division.

CERTIFICATES

Introduction to Design Thinking, Design Thinking Hawai'i, Honolulu, Hawai'i, 2011

Engage! Lead! Training, Neighbor Works America, Waipahu, Hawai'i, 2011

Gangs 101 Workshop, Missouri Western State University Regional Community

Policing Institute, Waipahu, Hawai'i, 2010

First Aid/CPR for Adults, Medic First Aid, Honolulu, Hawai'i, August 2010

Listen First, YMCA of Honolulu, Kalihi, Hawai'i, 2009

Motivational Interviewing Basic and Advanced Skills, State of Hawai'i Department of Health Alcohol and Drug Abuse Division, Kapolei, Hawai'i, 2009

Senior Director, YMCA of the USA, Honolulu, Hawai'i, November 2008

Current Support Director Institute, YMCA of the USA, Honolulu, Hawai'i, May 2001

Introduction to Not-For-Profit Marketing, YMCA of the USA, Honolulu, Hawai'i, November 1999

Pricing, YMCA of the USA, Honolulu, Hawai'i, November 1999

YMCA Program Management and Development, YMCA of the USA, Honolulu, Hawai'i, November 1999

Grant Proposal Writing Workshop, the Grantsmanship Center, Honolulu, Hawai'i, May 1997

Principles and Practices, YMCA of the USA, Berkeley, California, April 1997

Group Work, YMCA of the USA, Honolulu, Hawai'i, March 1996

Volunteerism and the YMCA, YMCA of the USA, Honolulu, Hawai'i, September 1995

LTP Delivery Module, YMCA of the USA, Honolulu, Hawai'i, April 1995

Problem Solving and Decision Making and Substance Abuse Prevention, YMCA of the USA, Honolulu, Hawai'i, November 1993

Basics in Community Development, Working with 10-14 Year Olds and Working with 15-17 Year Olds, YMCA of the USA, Honolulu, Hawai'i, November 1992

Program Trainer Orientation, YMCA of the USA, Honolulu, Hawai'i, October 1992

OTHER Gang Violence Prevention Training, National Crime Prevention Council, Waipahu, Hawai'i, 2011

EXPERIENCES CCDO National Conference, Department of Justice, Tampa, Florida, 2009
Healthy Honolulu Together Curriculum Writer, Kalihi YMCA, Honolulu, Hawai'i, 2009
Ka Ulu Pono Curriculum Writer, Kalihi YMCA, Honolulu, Hawai'i, 2009 Alaka'i Malama Academy Planning Team Advisor, Communities In Schools of Hawai'i, Waipahu, Hawai'i, 1995 to 2003
Living Aloha Through Volunteerism Regional Conference Facilitator, Communities in Schools of Hawai'i, Waipahu, Hawai'i, 1999
Orientation to Social Services Division, Philosophy & Resources (Family Centered Strengths & Needs Based Practice), Overview of CPS Statutes, HRS 350 & 587 and Behavioral & Physical Indicators of Child Abuse and Neglect Trainings, Department of Human Services, Honolulu, Hawai'i, 1999
Alaka'i Malama Academy Teen Group Advisor, Leeward YMCA, Waipahu, Hawai'i, 1992 to 1994
Hawaiian Leadership Development Conference, University of Hawai'i at Hilo, Hilo, Hawai'i, 1993 and 1994
Journey Workshop, Leeward YMCA, Waipahu, Hawai'i, 1994
YMCA Pacific Regional Conference GFT 1, Leeward YMCA, San Francisco, California, 1994
YMCA Youth Legislature State Advisor's Director, Leeward YMCA, Honolulu, Hawai'i, 1994
Assistant Boys Volleyball Coach, Pearl City High School, Pearl City, Hawai'i, 1989 to 1993

**DECLARATION STATEMENT
APPLICANTS FOR GRANTS AND SUBSIDIES
CHAPTER 42F, HAWAII REVISIED STATUTES**

The undersigned authorized representative of the applicant acknowledges that said applicant meets and will comply with all of the following standards for the award of grants and subsidies pursuant to section 42F-103, Hawaii Revised Statutes:

- (1) Is licensed or accredited, in accordance with federal, state, or county statutes, rules, or ordinances, to conduct the activities or provide the services for which a grant or subsidy is awarded;
- (2) Comply with all applicable federal and state laws prohibiting discrimination against any person on the basis of race, color, national origin, religion, creed, sex, age, sexual orientation, or disability;
- (3) Agree not to use state funds for entertainment or lobbying activities; and
- (4) Allow the state agency to which funds for the grant or subsidy were appropriated for expenditure, legislative committees and their staff, and the auditor full access to their records, reports, files, and other related documents and information for purposes of monitoring, measuring the effectiveness, and ensuring the proper expenditure of the grant or subsidy.

In addition, a grant or subsidy may be made to an organization only if the organization:

- (1) Is incorporated under the laws of the State; and
- (2) Has bylaws or policies that describe the manner in which the activities or services for which a grant or subsidy is awarded shall be conducted or provided.

Further, a grant or subsidy may be awarded to a non-profit organization only if the organization:

- (1) Has been determined and designated to be a non-profit organization by the Internal Revenue Service; and
- (2) Has a governing board whose members have no material conflict of interest and serve without compensation.

For a grant or subsidy used for the acquisition of land, when the organization discontinues the activities or services on the land acquired for which the grant or subsidy was awarded and disposes of the land in fee simple or by lease, the organization shall negotiate with the expending agency for a lump sum or installment repayment to the State of the amount of the grant or subsidy used for the acquisition of the land.

Further, the undersigned authorized representative certifies that this statement is true and correct to the best of the applicant's knowledge.

YMCA Of Honolulu



01/27/2012

(Date)

Michael Broderick
(Typed Name)

President & CEO
(Title)